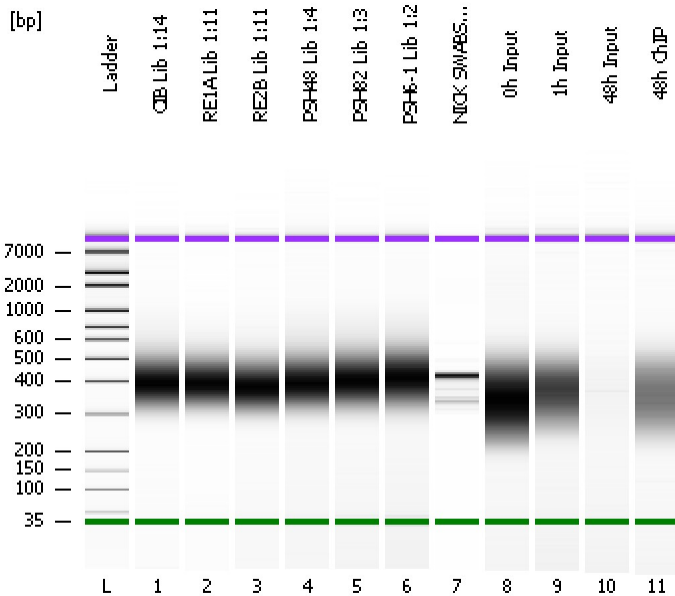


Assay Class: High Sensitivity DNA Assay
Data Path: C:\...ents and Settings\Bioanalyzer\2013-09-25\2013-09-25_003.xad

Created: 9/25/2013 12:51:03 PM
Modified: 9/25/2013 1:35:24 PM

Electrophoresis File Run Summary



Instrument Information:

Instrument Name: DE13701086 Firmware: C.01.069
Serial#: DE13701086 Type: G2938B

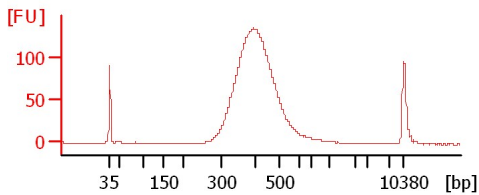
Assay Information:

Assay Origin Path: C:\Program Files\Agilent\2100 bioanalyzer\2100 expert\assays\dsDNA\High Sensitivity DNA.xsy
Assay Class: High Sensitivity DNA Assay
Version: 1.03
Assay Comments: Copyright © 2003-2010 Agilent Technologies

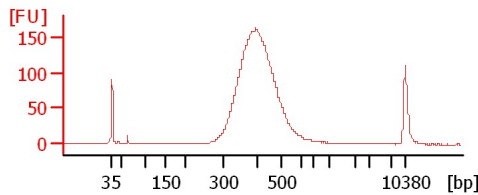
Chip Information:

Chip Lot #:
Reagent Kit Lot #:
Chip Comments:

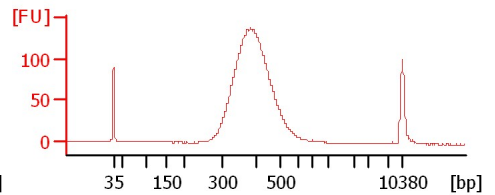
CIB Lib 1:14



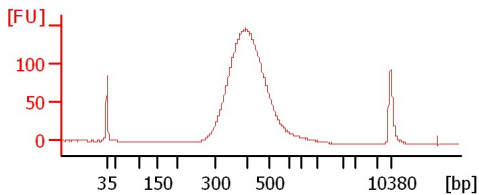
RE1A Lib 1:11



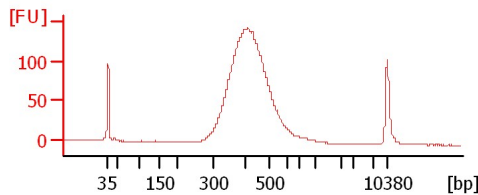
RE2B Lib 1:11



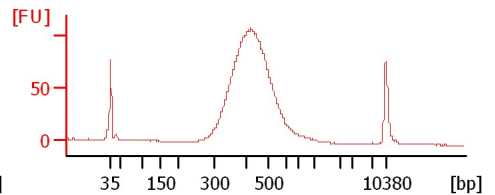
PSH48 Lib 1:4



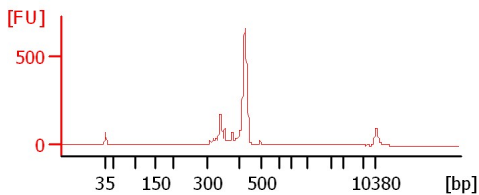
PSH82 Lib 1:3



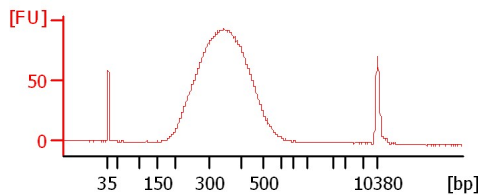
PSH6-1 Lib 1:2



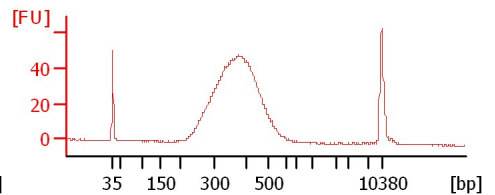
NICK SWABS Lib 1:37



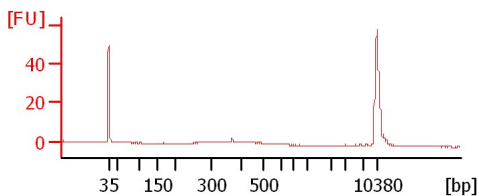
0h Input



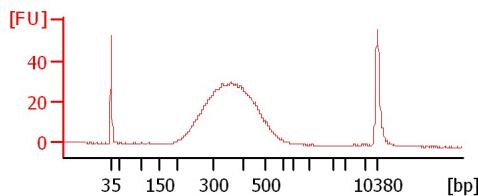
1h Input



48h Input



48h ChIP



Assay Class: High Sensitivity DNA Assay
 Data Path: C:\...ents and Settings\Bioanalyzer\2013-09-25\2013-09-25_003.xad

Created: 9/25/2013 12:51:03 PM
 Modified: 9/25/2013 1:35:24 PM

Electrophoresis File Run Summary (Chip Summary)

Sample Name	Sample Comment	Rest. Digest	Status	Observation	Result Label	Result Color
CIB Lib 1:14		<input type="checkbox"/>	✓			
RE1A Lib 1:11		<input type="checkbox"/>	✓			
RE2B Lib 1:11		<input type="checkbox"/>	✓			
PSH48 Lib 1:4		<input type="checkbox"/>	✓			
PSH82 Lib 1:3		<input type="checkbox"/>	✓			
PSH6-1 Lib 1:2		<input type="checkbox"/>	✓			
NICK SWABS Lib 1:37		<input type="checkbox"/>	✓			
0h Input		<input type="checkbox"/>	✓			
1h Input		<input type="checkbox"/>	✓			
48h Input		<input type="checkbox"/>	✓			
48h ChIP		<input type="checkbox"/>	✓			
Ladder		<input type="checkbox"/>	✓			

Chip Lot #

Reagent Kit Lot #

Chip Comments :

Assay Class: High Sensitivity DNA Assay
Data Path: C:\...ents and Settings\Bioanalyzer\2013-09-25\2013-09-25_003.xad

Created: 9/25/2013 12:51:03 PM
Modified: 9/25/2013 1:35:24 PM

Electrophoresis Assay Details

General Analysis Settings

Number of Available Sample and Ladder Wells (Max.) : 12
Minimum Visible Range [s] : 32
Maximum Visible Range [s] : 138
Start Analysis Time Range [s] : 33
End Analysis Time Range [s] : 137.5
Ladder Concentration [pg/μl] : 1950
Uses Standard Area for Ladder Fragments
Lower Marker Concentration [pg/μl] : 125
Upper Marker Concentration [pg/μl] : 75
Used Upper Marker for Quantitation
Standard Curve Fit is Point to Point
Show Data Aligned to Lower and Upper Marker

Integrator Settings

Integration Start Time [s] : 33.05
Integration End Time [s] : 137
Slope Threshold : 0.8
Height Threshold [FU] : 5
Area Threshold : 0.1
Width Threshold [s] : 0.6
Baseline Plateau [s] : 0.5

Filter Settings

Filter Width [s] : 0.5
Polynomial Order : 4

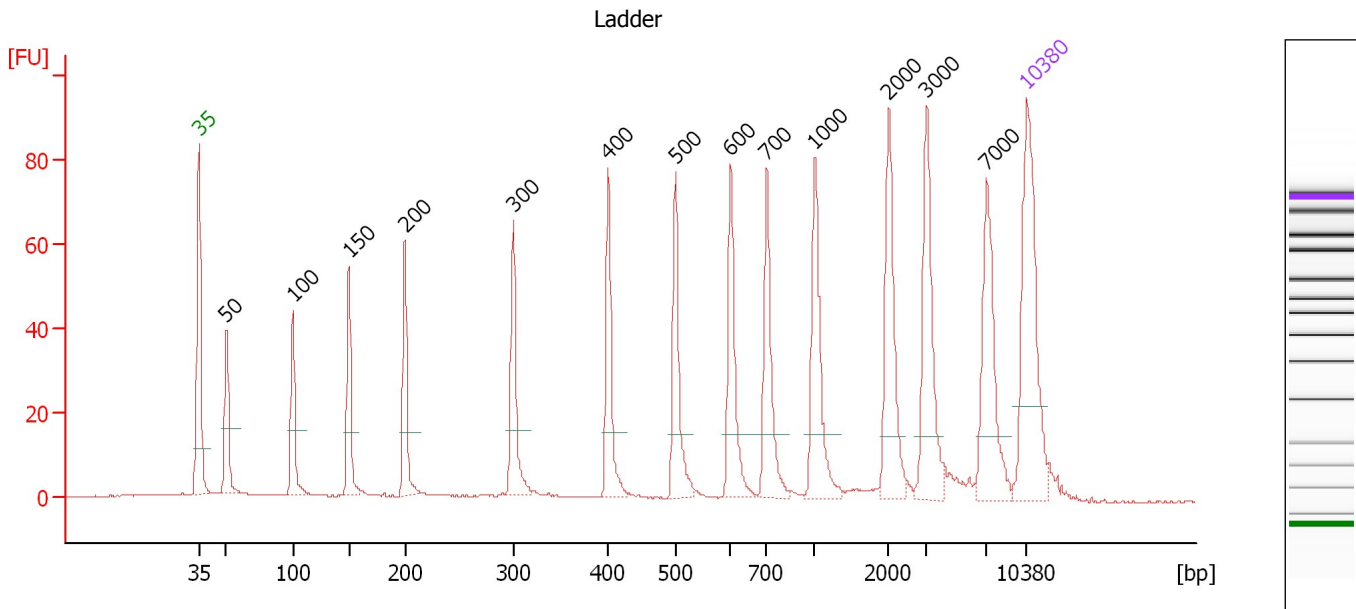
Ladder

Ladder Peak	Size	Area
1	35	160
2	50	210
3	100	208
4	150	221
5	200	242
6	300	270
7	400	305
8	500	306
9	600	336
10	700	321
11	1000	366
12	2000	413
13	3000	411
14	7000	400
15	10380	214

Assay Class: High Sensitivity DNA Assay
 Data Path: C:\...ents and Settings\Bioanalyzer\2013-09-25\2013-09-25_003.xad

Created: 9/25/2013 12:51:03 PM
 Modified: 9/25/2013 1:35:24 PM

Electropherogram Summary



Overall Results for Ladder

Noise: 0.1

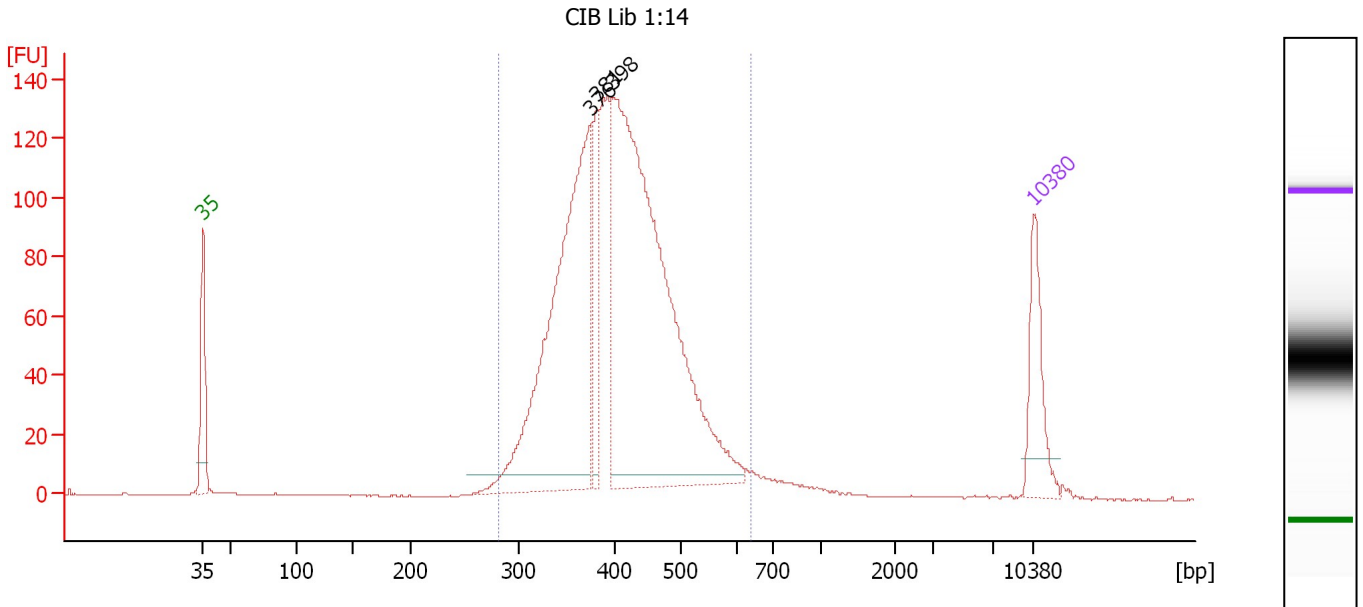
Peak table for Ladder

Peak	Size [bp]	Conc. [pg/μl]	Molarity [pmol/l]	Observations
1	35	125.00	5,411.3	Lower Marker
2	50	150.00	4,545.5	Ladder Peak
3	100	150.00	2,272.7	Ladder Peak
4	150	150.00	1,515.2	Ladder Peak
5	200	150.00	1,136.4	Ladder Peak
6	300	150.00	757.6	Ladder Peak
7	400	150.00	568.2	Ladder Peak
8	500	150.00	454.5	Ladder Peak
9	600	150.00	378.8	Ladder Peak
10	700	150.00	324.7	Ladder Peak
11	1,000	150.00	227.3	Ladder Peak
12	2,000	150.00	113.6	Ladder Peak
13	3,000	150.00	75.8	Ladder Peak
14	7,000	150.00	32.5	Ladder Peak
15	10,380	75.00	10.9	Upper Marker

Assay Class: High Sensitivity DNA Assay
 Data Path: C:\...ents and Settings\Bioanalyzer\2013-09-25\2013-09-25_003.xad

Created: 9/25/2013 12:51:03 PM
 Modified: 9/25/2013 1:35:24 PM

Electropherogram Summary Continued ...



Overall Results for sample 1 : CIB Lib 1:14

Number of peaks found: 3 Corr. Area 1: 1,870.4
 Noise: 0.2

Peak table for sample 1 : CIB Lib 1:14

Peak	Size [bp]	Conc. [pg/μl]	Molarity [pmol/l]	Observations
1	35	125.00	5,411.3	Lower Marker
2	376	637.52	2,567.2	
3	381	103.58	411.6	
4	398	923.73	3,516.0	
5	10,380	75.00	10.9	Upper Marker

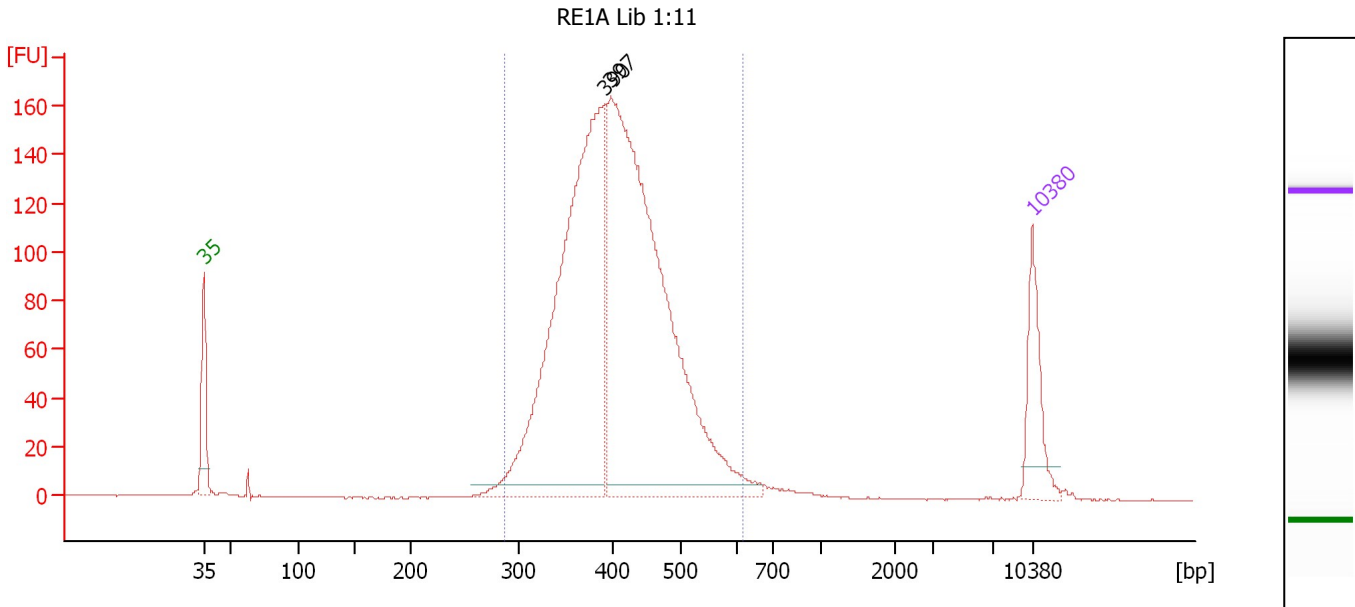
Region table for sample 1 : CIB Lib 1:14

From [bp]	To [bp]	Average Size [bp]	Molarity [pmol/l]	Conc. [pg/μl]	Corr. Area	% of Total	Size distribution in CV [%]	Color
283	641	412	7,277.3	1,920.46	1,870.4	96	15.7	Blue

Assay Class: High Sensitivity DNA Assay
 Data Path: C:\...ents and Settings\Bioanalyzer\2013-09-25\2013-09-25_003.xad

Created: 9/25/2013 12:51:03 PM
 Modified: 9/25/2013 1:35:24 PM

Electropherogram Summary Continued ...



Overall Results for sample 2 : RE1A Lib 1:11

Number of peaks found: 2 Corr. Area 1: 2,160.1
 Noise: 0.2

Peak table for sample 2 : RE1A Lib 1:11

Peak	Size [bp]	Conc. [pg/μl]	Molarity [pmol/l]	Observations
1	35	125.00	5,411.3	Lower Marker
2	390	874.68	3,394.1	
3	397	1,055.17	4,025.0	
4	10,380	75.00	10.9	Upper Marker

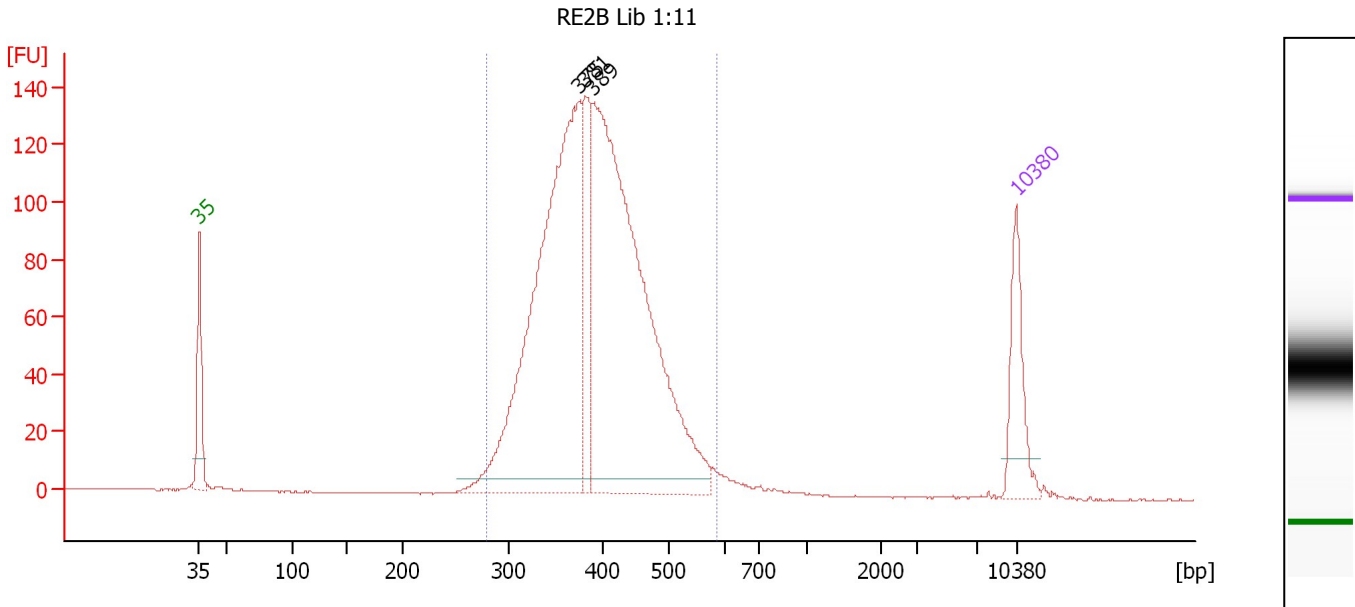
Region table for sample 2 : RE1A Lib 1:11

From [bp]	To [bp]	Average Size [bp]	Molarity [pmol/l]	Conc. [pg/μl]	Corr. Area	% of Total	Size distribution in CV [%]	Color
286	620	410	7,477.6	1,970.44	2,160.1	97	14.9	Blue

Assay Class: High Sensitivity DNA Assay
 Data Path: C:\...ents and Settings\Bioanalyzer\2013-09-25\2013-09-25_003.xad

Created: 9/25/2013 12:51:03 PM
 Modified: 9/25/2013 1:35:24 PM

Electropherogram Summary Continued ...



Overall Results for sample 3 : RE2B Lib 1:11

Number of peaks found: 3 Corr. Area 1: 1,880.3
 Noise: 0.2

Peak table for sample 3 : RE2B Lib 1:11

Peak	Size [bp]	Conc. [pg/μl]	Molarity [pmol/l]	Observations
1	35	125.00	5,411.3	Lower Marker
2	375	821.07	3,320.7	
3	381	152.49	606.6	
4	389	911.57	3,551.9	
5	10,380	75.00	10.9	Upper Marker

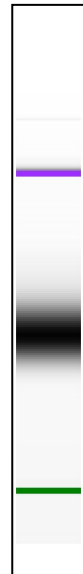
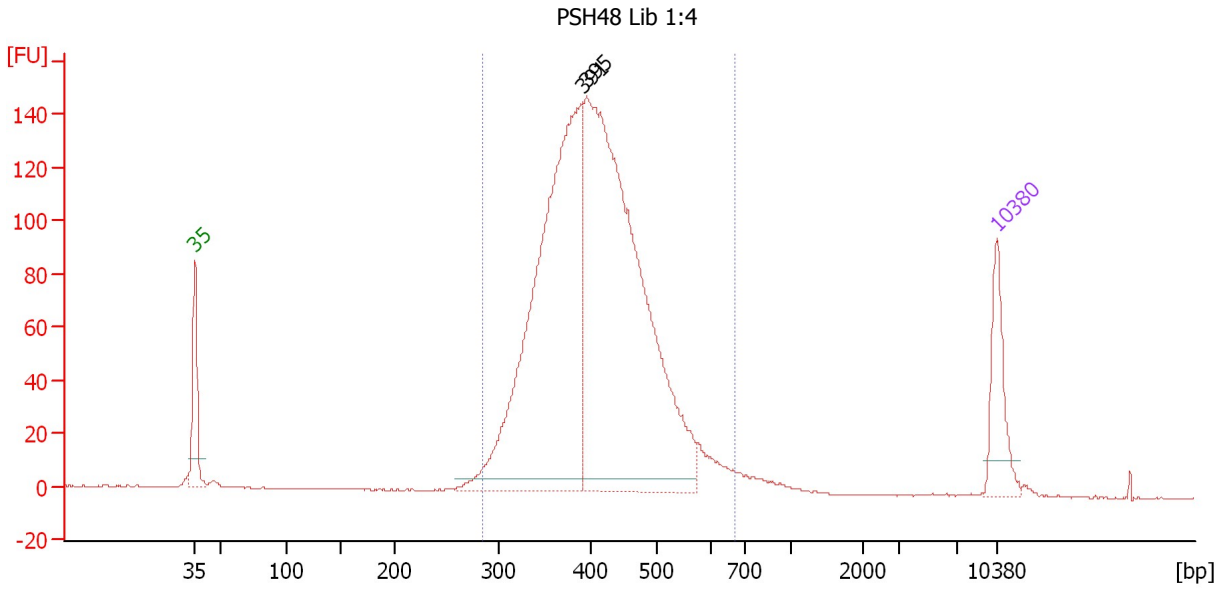
Region table for sample 3 : RE2B Lib 1:11

From [bp]	To [bp]	Average Size [bp]	Molarity [pmol/l]	Conc. [pg/μl]	Corr. Area	% of Total	Size distribution in CV [%]	Color
279	586	396	7,448.9	1,896.54	1,880.3	97	14.8	Blue

Assay Class: High Sensitivity DNA Assay
 Data Path: C:\...ents and Settings\Bioanalyzer\2013-09-25\2013-09-25_003.xad

Created: 9/25/2013 12:51:03 PM
 Modified: 9/25/2013 1:35:24 PM

Electropherogram Summary Continued ...



Overall Results for sample 4 : PSH48 Lib 1:4

Number of peaks found: 2 Corr. Area 1: 2,049.6
 Noise: 0.2

Peak table for sample 4 : PSH48 Lib 1:4

Peak	Size [bp]	Conc. [pg/μl]	Molarity [pmol/l]	Observations
1	35	125.00	5,411.3	Lower Marker
2	391	904.62	3,509.3	
3	395	1,093.22	4,197.3	
4	10,380	75.00	10.9	Upper Marker

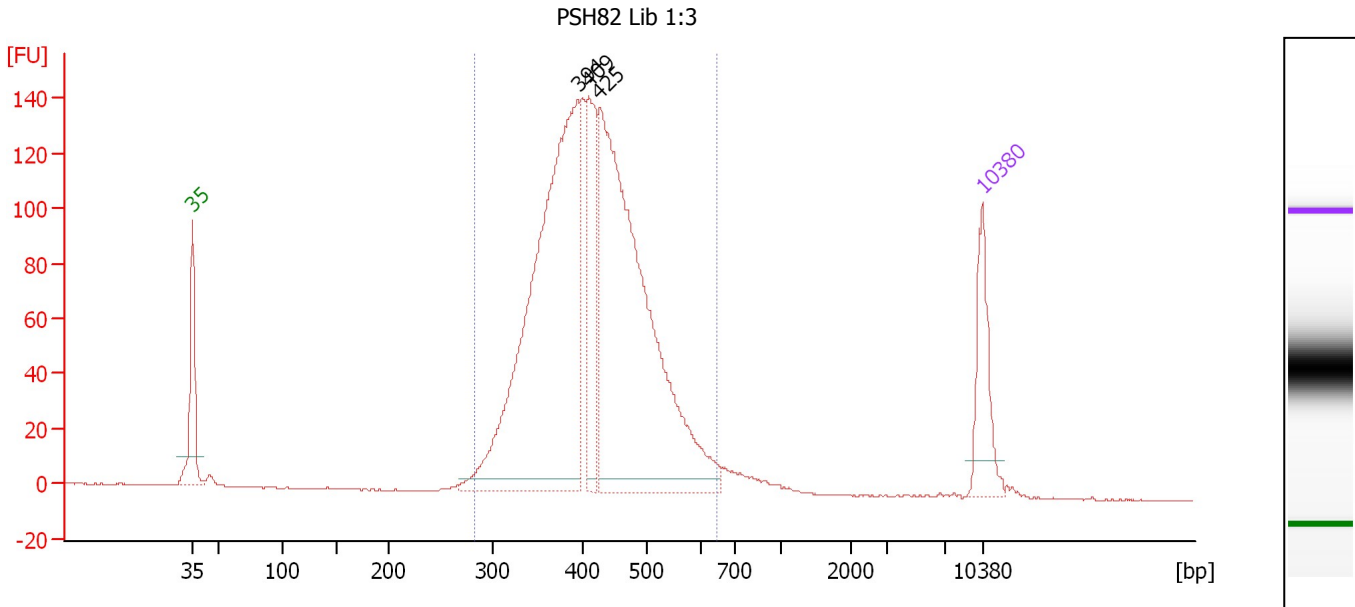
Region table for sample 4 : PSH48 Lib 1:4

From [bp]	To [bp]	Average Size [bp]	Molarity [pmol/l]	Conc. [pg/μl]	Corr. Area	% of Total	Size distribution in CV [%]	Color
283	669	413	7,799.1	2,060.40	2,049.6	97	16.3	Blue

Assay Class: High Sensitivity DNA Assay
 Data Path: C:\...ents and Settings\Bioanalyzer\2013-09-25\2013-09-25_003.xad

Created: 9/25/2013 12:51:03 PM
 Modified: 9/25/2013 1:35:24 PM

Electropherogram Summary Continued ...



Overall Results for sample 5 : PSH82 Lib 1:3

Number of peaks found: 3 Corr. Area 1: 2,027.5
 Noise: 0.2

Peak table for sample 5 : PSH82 Lib 1:3

Peak	Size [bp]	Conc. [pg/μl]	Molarity [pmol/l]	Observations
1	35	125.00	5,411.3	Lower Marker
2	394	812.53	3,125.5	
3	409	167.24	619.8	
4	425	789.60	2,812.0	
5	10,380	75.00	10.9	Upper Marker

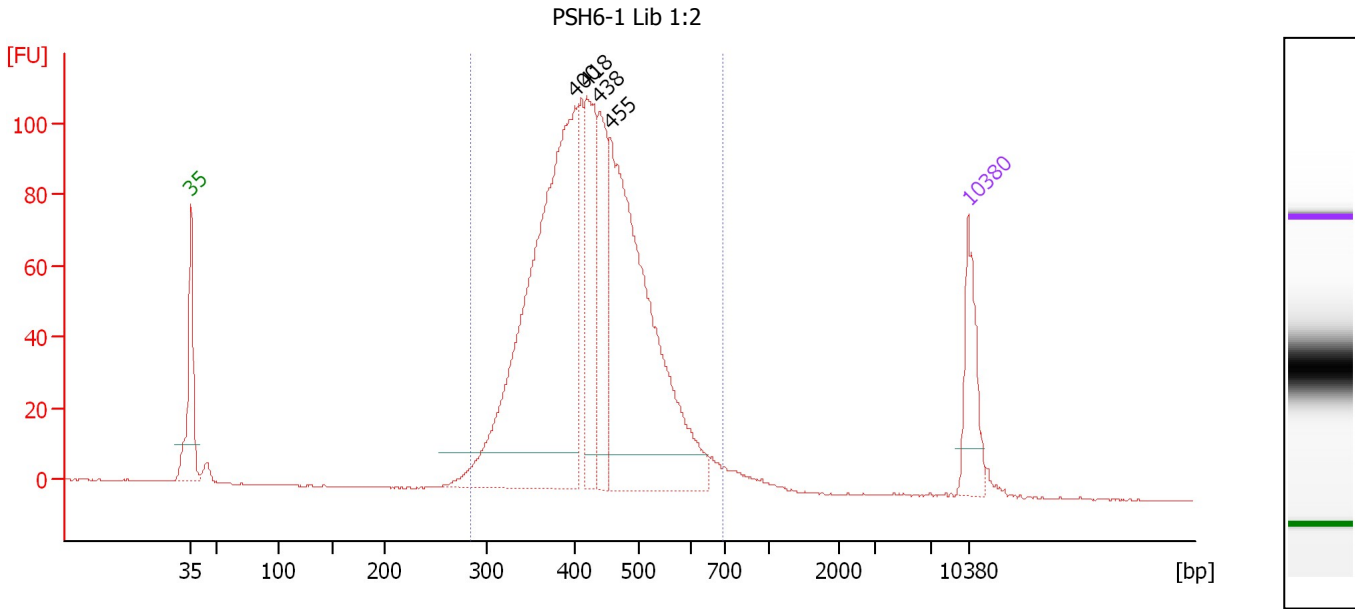
Region table for sample 5 : PSH82 Lib 1:3

From [bp]	To [bp]	Average Size [bp]	Molarity [pmol/l]	Conc. [pg/μl]	Corr. Area	% of Total	Size distribution in CV [%]	Color
283	647	420	7,030.4	1,887.41	2,027.5	96	16.1	Blue

Assay Class: High Sensitivity DNA Assay
 Data Path: C:\...ents and Settings\Bioanalyzer\2013-09-25\2013-09-25_003.xad

Created: 9/25/2013 12:51:03 PM
 Modified: 9/25/2013 1:35:24 PM

Electropherogram Summary Continued ...



Setpoint Deviations for sample 6 : PSH6-1 Lib 1:2

Height Threshold [FU] : 10

Overall Results for sample 6 : PSH6-1 Lib 1:2

Number of peaks found: 4 Corr. Area 1: 1,608.7
 Noise: 0.1

Peak table for sample 6 : PSH6-1 Lib 1:2

Peak	Size [bp]	Conc. [pg/μl]	Molarity [pmol/l]	Observations
1	35	125.00	5,411.3	Lower Marker
2	400	884.41	3,352.6	
3	418	205.52	744.7	
4	438	176.84	612.3	
5	455	678.81	2,258.8	
6	10,380	75.00	10.9	Upper Marker

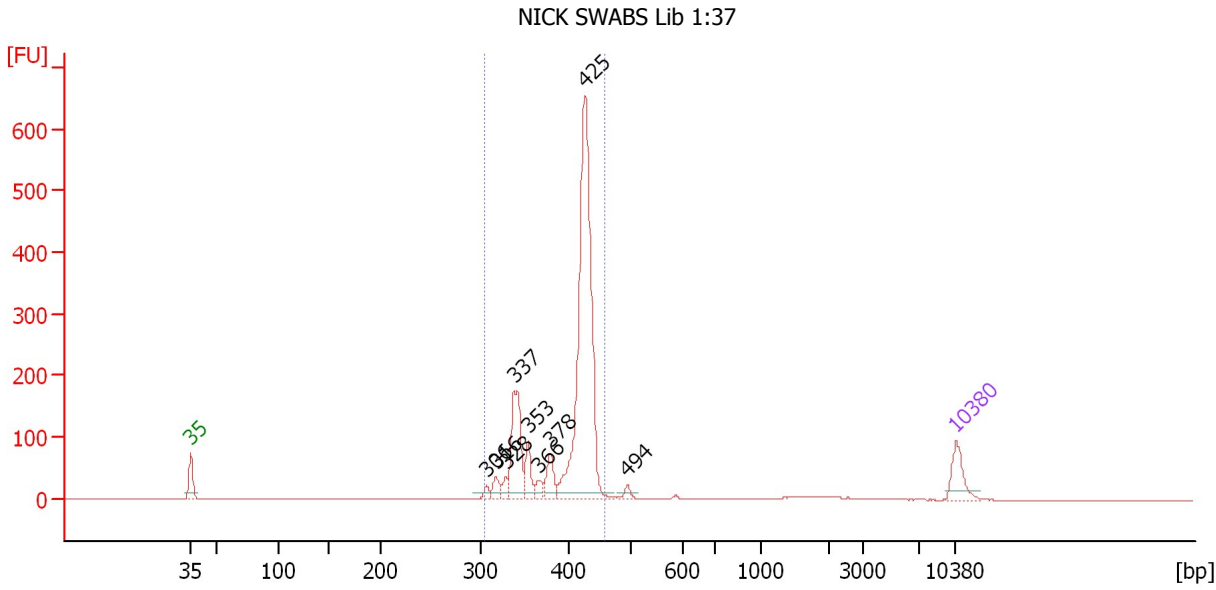
Region table for sample 6 : PSH6-1 Lib 1:2

From [bp]	To [bp]	Average Size [bp]	Molarity [pmol/l]	Conc. [pg/μl]	Corr. Area	% of Total	Size distribution in CV [%]	Color
284	694	431	7,622.4	2,089.68	1,608.7	97	17.2	Blue

Assay Class: High Sensitivity DNA Assay
 Data Path: C:\...ents and Settings\Bioanalyzer\2013-09-25\2013-09-25_003.xad

Created: 9/25/2013 12:51:03 PM
 Modified: 9/25/2013 1:35:24 PM

Electropherogram Summary Continued ...



Setpoint Deviations for sample 7 : NICK SWABS Lib 1:37

Height Threshold [FU] : 10

Overall Results for sample 7 : NICK SWABS Lib 1:37

Number of peaks found: 9 Corr. Area 1: 1,625.2
 Noise: 0.1

Peak table for sample 7 : NICK SWABS Lib 1:37

Peak	Size [bp]	Conc. [pg/μl]	Molarity [pmol/l]	Observations
1	35	125.00	5,411.3	Lower Marker
2	306	22.37	110.8	
3	316	41.71	199.7	
4	328	31.79	146.9	
5	337	273.22	1,228.1	
6	353	82.69	354.5	
7	366	32.67	135.2	
8	378	82.22	329.3	
9	425	1,183.18	4,216.2	
10	494	22.65	69.5	
11	10,380	75.00	10.9	Upper Marker

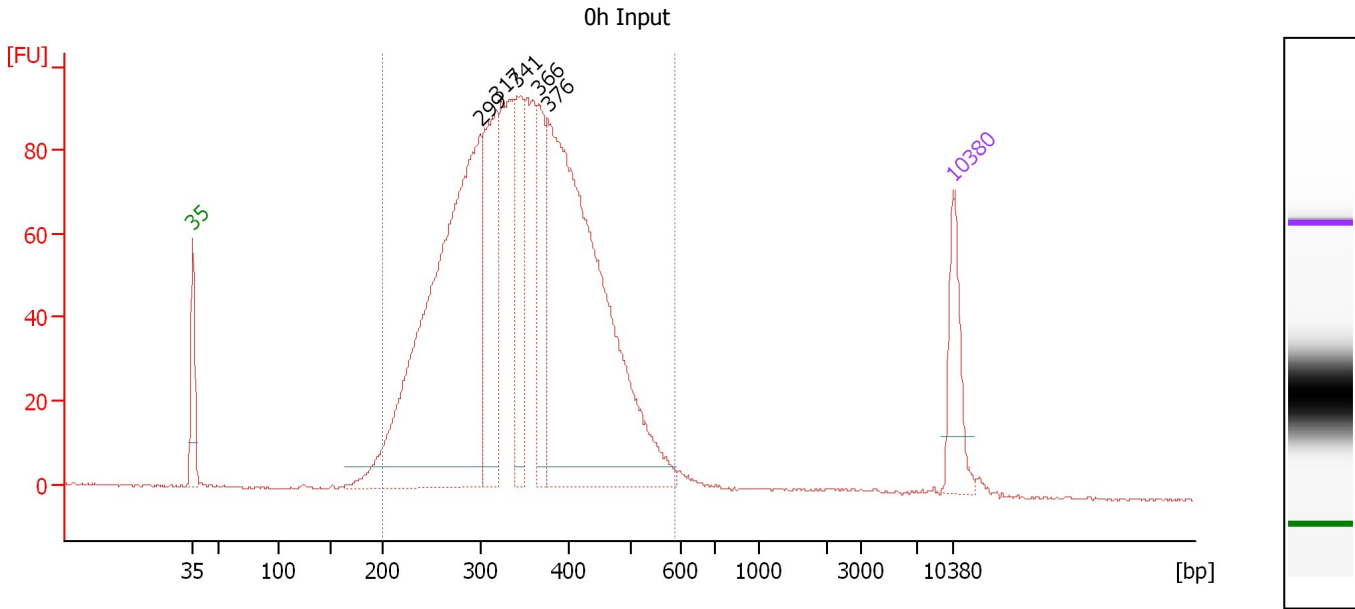
Region table for sample 7 : NICK SWABS Lib 1:37

From [bp]	To [bp]	Average Size [bp]	Molarity [pmol/l]	Conc. [pg/μl]	Corr. Area	% of Total	Size distribution in CV [%]	Color
303	457	401	6,688.5	1,746.88	1,625.2	94	9.5	Blue

Assay Class: High Sensitivity DNA Assay
 Data Path: C:\...ents and Settings\Bioanalyzer\2013-09-25\2013-09-25_003.xad

Created: 9/25/2013 12:51:03 PM
 Modified: 9/25/2013 1:35:24 PM

Electropherogram Summary Continued ...



Overall Results for sample 8 : Oh Input

Number of peaks found: 5 Corr. Area 1: 2,078.8
 Noise: 0.3

Peak table for sample 8 : Oh Input

Peak	Size [bp]	Conc. [pg/μl]	Molarity [pmol/l]	Observations
1	35	125.00	5,411.3	Lower Marker
2	299	1,000.01	5,073.5	
3	317	279.61	1,337.4	
4	341	181.90	809.1	
5	366	140.77	582.3	
6	376	927.13	3,735.5	
7	10,380	75.00	10.9	Upper Marker

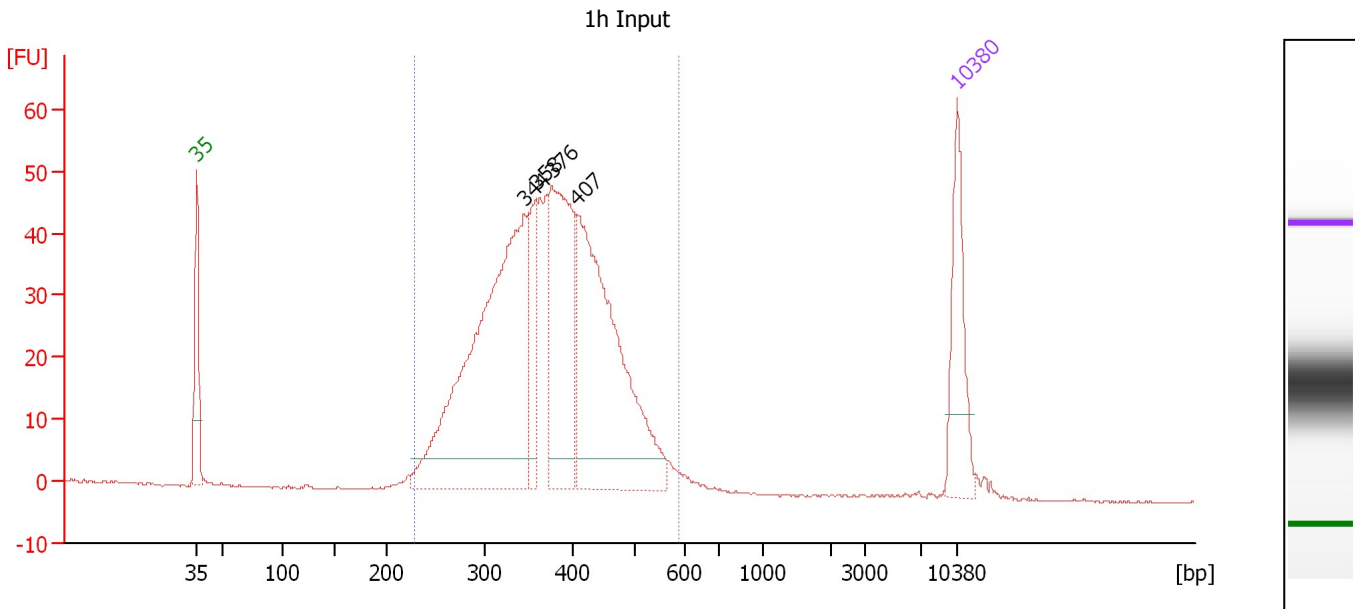
Region table for sample 8 : Oh Input

From [bp]	To [bp]	Average Size [bp]	Molarity [pmol/l]	Conc. [pg/μl]	Corr. Area	% of Total	Size distribution in CV [%]	Color
200	586	349	14,114.4	3,044.22	2,078.8	97	21.8	Blue

Assay Class: High Sensitivity DNA Assay
 Data Path: C:\...ents and Settings\Bioanalyzer\2013-09-25\2013-09-25_003.xad

Created: 9/25/2013 12:51:03 PM
 Modified: 9/25/2013 1:35:24 PM

Electropherogram Summary Continued ...



Overall Results for sample 9 : 1h Input

Number of peaks found: 4 Corr. Area 1: 863.4
 Noise: 0.1

Peak table for sample 9 : 1h Input

Peak	Size [bp]	Conc. [pg/μl]	Molarity [pmol/l]	Observations
1	35	125.00	5,411.3	Lower Marker
2	344	532.65	2,345.9	
3	358	80.64	341.2	
4	376	239.84	967.1	
5	407	370.84	1,379.9	
6	10,380	75.00	10.9	Upper Marker

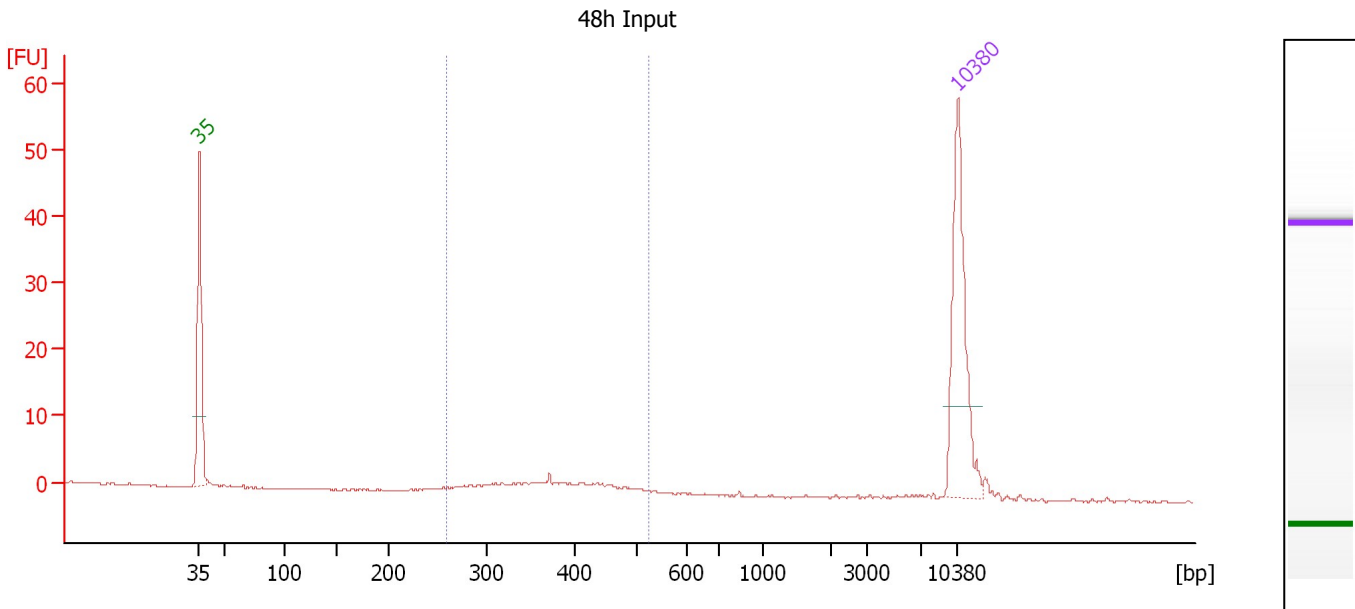
Region table for sample 9 : 1h Input

From [bp]	To [bp]	Average Size [bp]	Molarity [pmol/l]	Conc. [pg/μl]	Corr. Area	% of Total	Size distribution in CV [%]	Color
229	586	376	5,827.5	1,376.65	863.4	98	18.7	Blue

Assay Class: High Sensitivity DNA Assay
 Data Path: C:\...ents and Settings\Bioanalyzer\2013-09-25\2013-09-25_003.xad

Created: 9/25/2013 12:51:03 PM
 Modified: 9/25/2013 1:35:24 PM

Electropherogram Summary Continued ...



Overall Results for sample 10 : 48h Input

Number of peaks found: 0 Corr. Area 1: 20.1
 Noise: 0.1

Peak table for sample 10 : 48h Input

Peak	Size [bp]	Conc. [pg/μl]	Molarity [pmol/l]	Observations
1	35	125.00	5,411.3	Lower Marker
2	10,380	75.00	10.9	Upper Marker

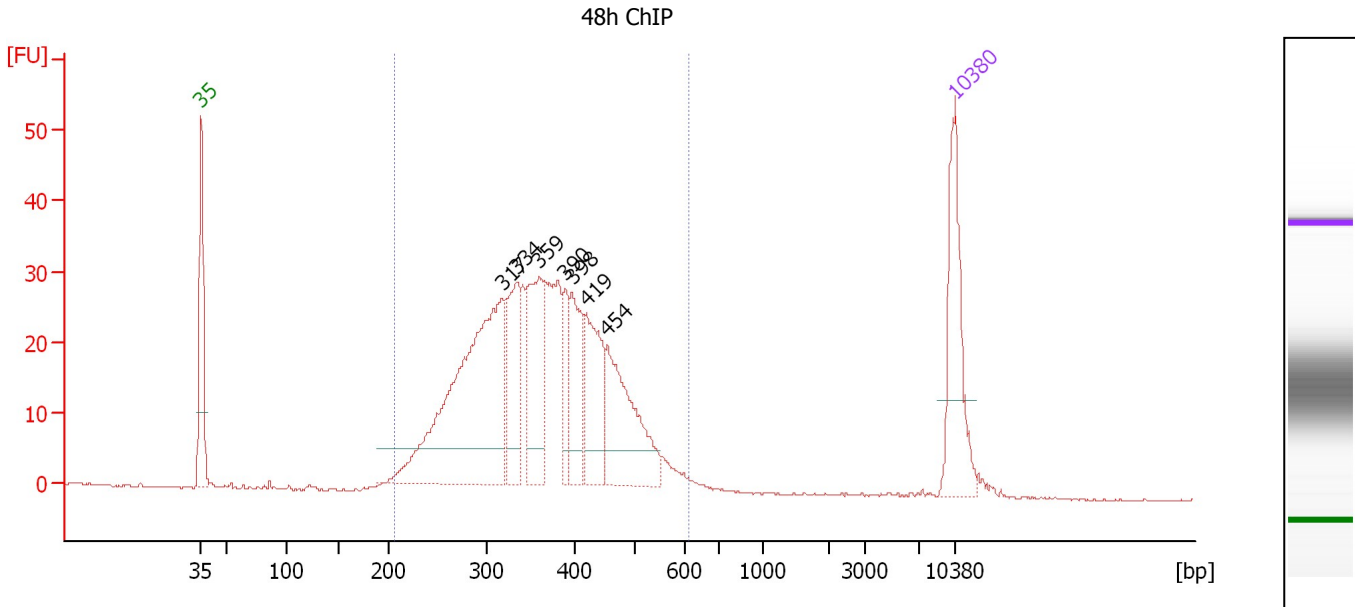
Region table for sample 10 : 48h Input

From [bp]	To [bp]	Average Size [bp]	Molarity [pmol/l]	Conc. [pg/μl]	Corr. Area	% of Total	Size distribution in CV [%]	Color
259	525	379	133.6	32.24	20.1	84	16.0	Blue

Assay Class: High Sensitivity DNA Assay
 Data Path: C:\...ents and Settings\Bioanalyzer\2013-09-25\2013-09-25_003.xad

Created: 9/25/2013 12:51:03 PM
 Modified: 9/25/2013 1:35:24 PM

Electropherogram Summary Continued ...



Overall Results for sample 11 : 48h ChIP

Number of peaks found: 7 Corr. Area 1: 627.0
 Noise: 0.1

Peak table for sample 11 : 48h ChIP

Peak	Size [bp]	Conc. [pg/μl]	Molarity [pmol/l]	Observations
1	35	125.00	5,411.3	Lower Marker
2	317	334.65	1,600.0	
3	334	89.97	408.7	
4	359	110.40	465.4	
5	390	36.52	141.8	
6	398	69.84	266.1	
7	419	85.27	308.1	
8	454	118.09	393.9	
9	10,380	75.00	10.9	Upper Marker

Region table for sample 11 : 48h ChIP

From [bp]	To [bp]	Average Size [bp]	Molarity [pmol/l]	Conc. [pg/μl]	Corr. Area	% of Total	Size distribution in CV [%]	Color
206	609	366	4,749.6	1,076.62	627.0	97	21.5	Blue

Assay Class: High Sensitivity DNA Assay
Data Path: C:\...ents and Settings\Bioanalyzer\2013-09-25\2013-09-25_003.xad

Created: 9/25/2013 12:51:03 PM
Modified: 9/25/2013 1:35:24 PM

Gel Image

