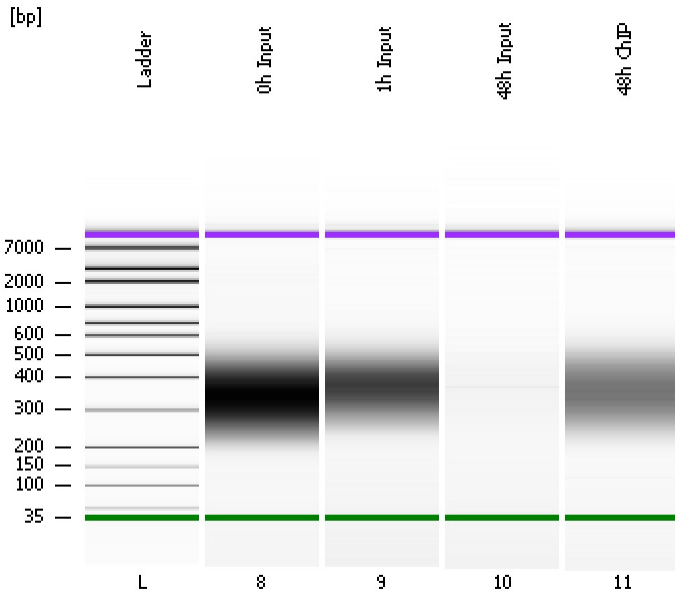


Assay Class: High Sensitivity DNA Assay
Data Path: C:\...Settings\Bioanalyzer\2013-09-25\2013-09-25_003_ChIP_Lib.xad

Created: 9/25/2013 12:51:03 PM
Modified: 9/25/2013 1:37:40 PM

Electrophoresis File Run Summary



Instrument Information:

Instrument Name: DE13701086 Firmware: C.01.069
Serial#: DE13701086 Type: G2938B

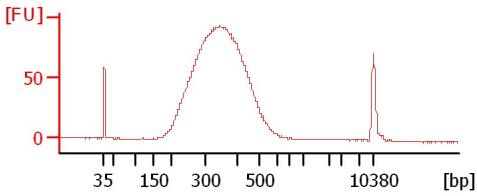
Assay Information:

Assay Origin Path: C:\Program Files\Agilent\2100 bioanalyzer\2100 expert\assays\dsDNA\High Sensitivity DNA.xsy
Assay Class: High Sensitivity DNA Assay
Version: 1.03
Assay Comments: Copyright © 2003-2010 Agilent Technologies

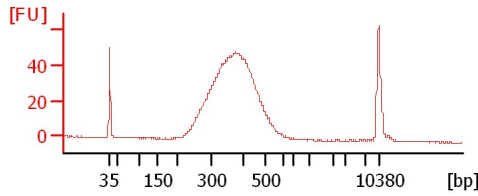
Chip Information:

Chip Lot #:
Reagent Kit Lot #:
Chip Comments:

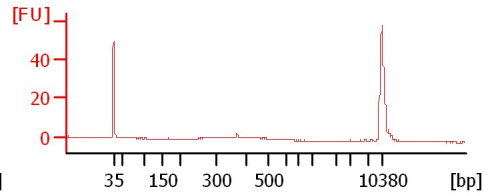
0h Input



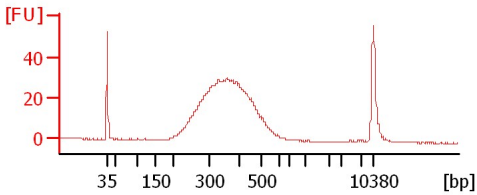
1h Input



48h Input



48h ChIP



Assay Class: High Sensitivity DNA Assay
 Data Path: C:\...Settings\Bioanalyzer\2013-09-25\2013-09-25_003_ChIP_Lib.xad

Created: 9/25/2013 12:51:03 PM
 Modified: 9/25/2013 1:37:40 PM

Electrophoresis File Run Summary (Chip Summary)

Sample Name	Sample Comment	Rest. Digest	Status	Observation	Result Label	Result Color
0h Input		<input type="checkbox"/>	✓			
1h Input		<input type="checkbox"/>	✓			
48h Input		<input type="checkbox"/>	✓			
48h ChIP		<input type="checkbox"/>	✓			
Ladder		<input type="checkbox"/>	✓			

Chip Lot #

Reagent Kit Lot #

Chip Comments :

Assay Class: High Sensitivity DNA Assay
 Data Path: C:\...Settings\Bioanalyzer\2013-09-25\2013-09-25_003_ChIP_Lib.xad

Created: 9/25/2013 12:51:03 PM
 Modified: 9/25/2013 1:37:40 PM

Electrophoresis Assay Details

General Analysis Settings

Number of Available Sample and Ladder Wells (Max.) : 12
 Minimum Visible Range [s] : 32
 Maximum Visible Range [s] : 138
 Start Analysis Time Range [s] : 33
 End Analysis Time Range [s] : 137.5
 Ladder Concentration [pg/μl] : 1950
 Uses Standard Area for Ladder Fragments
 Lower Marker Concentration [pg/μl] : 125
 Upper Marker Concentration [pg/μl] : 75
 Used Upper Marker for Quantitation
 Standard Curve Fit is Point to Point
 Show Data Aligned to Lower and Upper Marker

Integrator Settings

Integration Start Time [s] : 33.05
 Integration End Time [s] : 137
 Slope Threshold : 0.8
 Height Threshold [FU] : 5
 Area Threshold : 0.1
 Width Threshold [s] : 0.6
 Baseline Plateau [s] : 0.5

Filter Settings

Filter Width [s] : 0.5
 Polynomial Order : 4

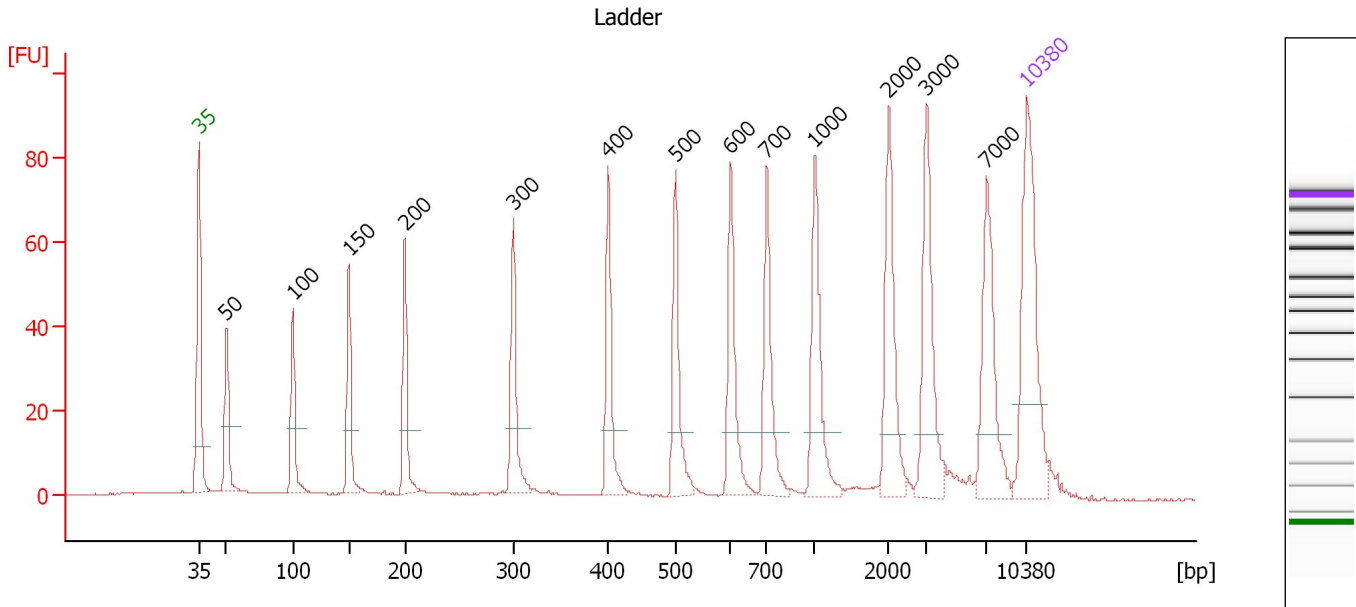
Ladder

Ladder Peak	Size	Area
1	35	160
2	50	210
3	100	208
4	150	221
5	200	242
6	300	270
7	400	305
8	500	306
9	600	336
10	700	321
11	1000	366
12	2000	413
13	3000	411
14	7000	400
15	10380	214

Assay Class: High Sensitivity DNA Assay
 Data Path: C:\...Settings\Bioanalyzer\2013-09-25\2013-09-25_003_ChIP_Lib.xad

Created: 9/25/2013 12:51:03 PM
 Modified: 9/25/2013 1:37:40 PM

Electropherogram Summary



Overall Results for Ladder

Noise: 0.1

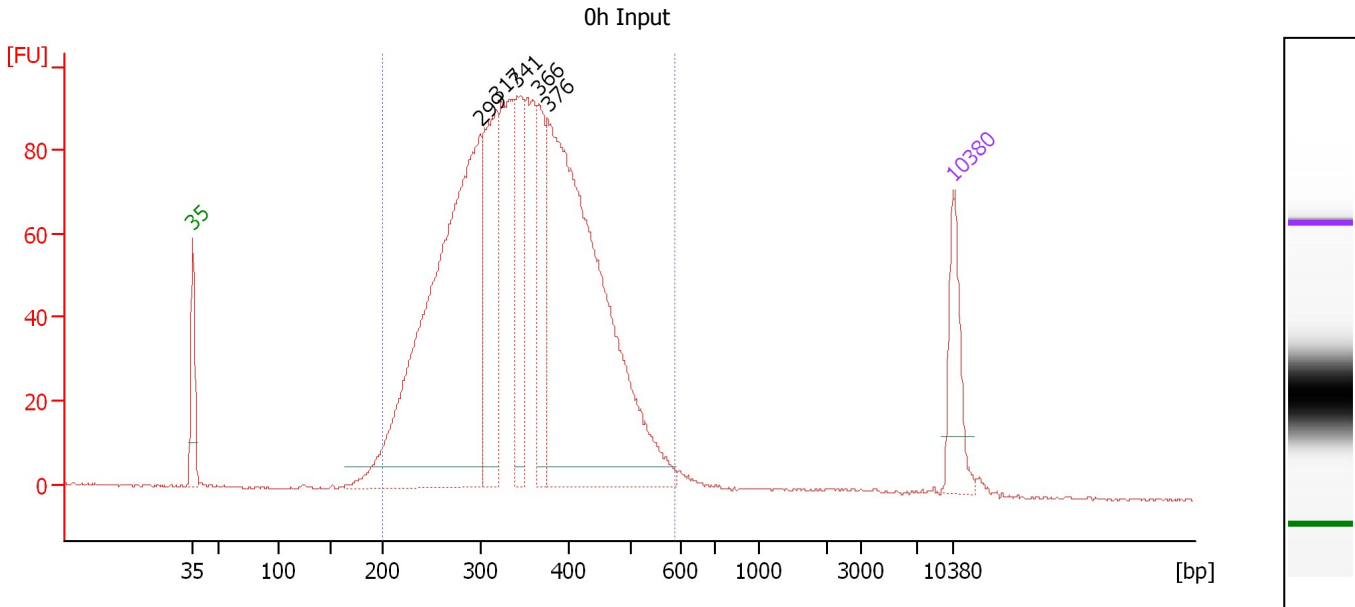
Peak table for Ladder

Peak	Size [bp]	Conc. [pg/μl]	Molarity [pmol/l]	Observations
1	35	125.00	5,411.3	Lower Marker
2	50	150.00	4,545.5	Ladder Peak
3	100	150.00	2,272.7	Ladder Peak
4	150	150.00	1,515.2	Ladder Peak
5	200	150.00	1,136.4	Ladder Peak
6	300	150.00	757.6	Ladder Peak
7	400	150.00	568.2	Ladder Peak
8	500	150.00	454.5	Ladder Peak
9	600	150.00	378.8	Ladder Peak
10	700	150.00	324.7	Ladder Peak
11	1,000	150.00	227.3	Ladder Peak
12	2,000	150.00	113.6	Ladder Peak
13	3,000	150.00	75.8	Ladder Peak
14	7,000	150.00	32.5	Ladder Peak
15	10,380	75.00	10.9	Upper Marker

Assay Class: High Sensitivity DNA Assay
 Data Path: C:\...Settings\Bioanalyzer\2013-09-25\2013-09-25_003_ChIP_Lib.xad

Created: 9/25/2013 12:51:03 PM
 Modified: 9/25/2013 1:37:40 PM

Electropherogram Summary Continued ...



Overall Results for sample 8 : Oh Input

Number of peaks found: 5 Corr. Area 1: 2,078.8
 Noise: 0.3

Peak table for sample 8 : Oh Input

Peak	Size [bp]	Conc. [pg/μl]	Molarity [pmol/l]	Observations
1	35	125.00	5,411.3	Lower Marker
2	299	1,000.01	5,073.5	
3	317	279.61	1,337.4	
4	341	181.90	809.1	
5	366	140.77	582.3	
6	376	927.13	3,735.5	
7	10,380	75.00	10.9	Upper Marker

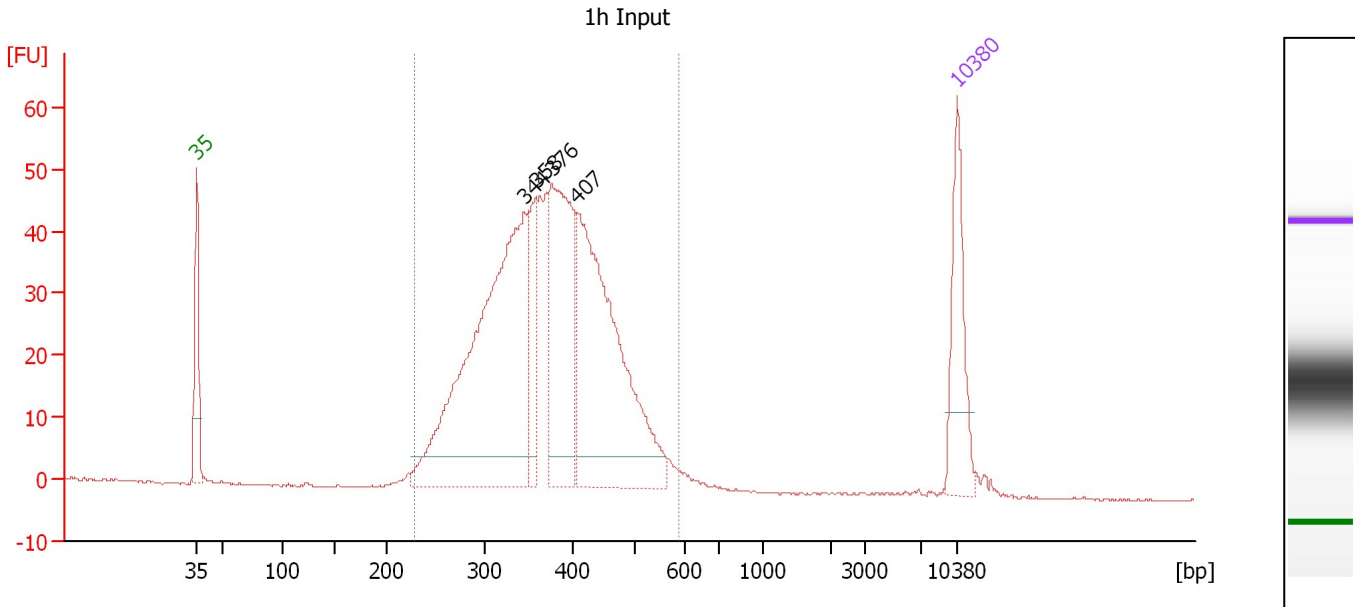
Region table for sample 8 : Oh Input

From [bp]	To [bp]	Average Size [bp]	Molarity [pmol/l]	Conc. [pg/μl]	Corr. Area	% of Total	Size distribution in CV [%]	Color
200	586	349	14,114.4	3,044.22	2,078.8	97	21.8	Blue

Assay Class: High Sensitivity DNA Assay
 Data Path: C:\...Settings\Bioanalyzer\2013-09-25\2013-09-25_003_ChIP_Lib.xad

Created: 9/25/2013 12:51:03 PM
 Modified: 9/25/2013 1:37:40 PM

Electropherogram Summary Continued ...



Overall Results for sample 9 : 1h Input

Number of peaks found: 4 Corr. Area 1: 863.4
 Noise: 0.1

Peak table for sample 9 : 1h Input

Peak	Size [bp]	Conc. [pg/μl]	Molarity [pmol/l]	Observations
1	35	125.00	5,411.3	Lower Marker
2	344	532.65	2,345.9	
3	358	80.64	341.2	
4	376	239.84	967.1	
5	407	370.84	1,379.9	
6	10,380	75.00	10.9	Upper Marker

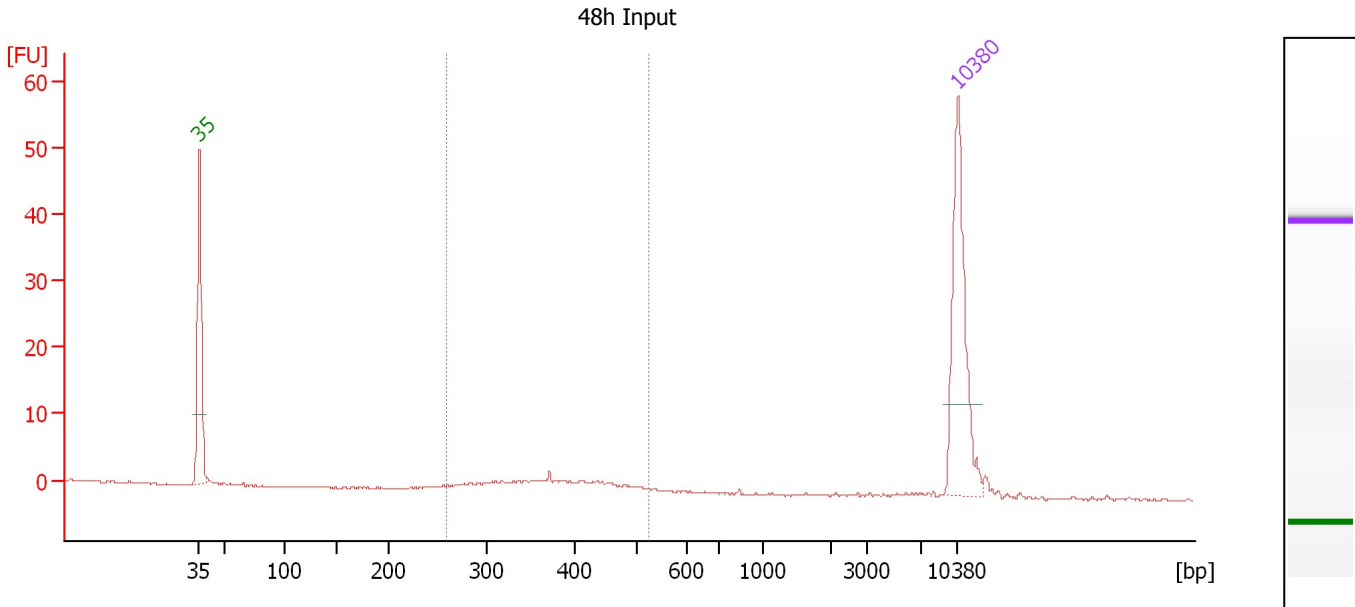
Region table for sample 9 : 1h Input

From [bp]	To [bp]	Average Size [bp]	Molarity [pmol/l]	Conc. [pg/μl]	Corr. Area	% of Total	Size distribution in CV [%]	Color
229	586	376	5,827.5	1,376.65	863.4	98	18.7	Blue

Assay Class: High Sensitivity DNA Assay
 Data Path: C:\...Settings\Bioanalyzer\2013-09-25\2013-09-25_003_ChIP_Lib.xad

Created: 9/25/2013 12:51:03 PM
 Modified: 9/25/2013 1:37:40 PM

Electropherogram Summary Continued ...



Overall Results for sample 10 : 48h Input

Number of peaks found: 0 Corr. Area 1: 20.1
 Noise: 0.1

Peak table for sample 10 : 48h Input

Peak	Size [bp]	Conc. [pg/μl]	Molarity [pmol/l]	Observations
1	35	125.00	5,411.3	Lower Marker
2	10,380	75.00	10.9	Upper Marker

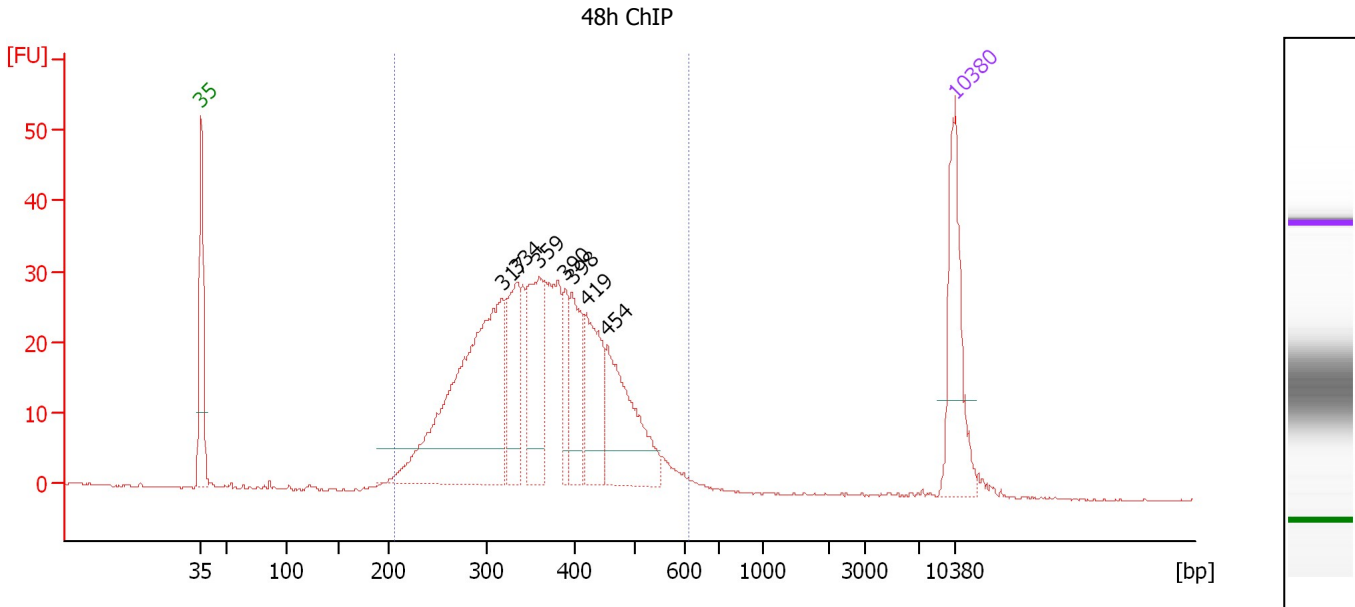
Region table for sample 10 : 48h Input

From [bp]	To [bp]	Average Size [bp]	Molarity [pmol/l]	Conc. [pg/μl]	Corr. Area	% of Total	Size distribution in CV [%]	Color
259	525	379	133.6	32.24	20.1	84	16.0	Blue

Assay Class: High Sensitivity DNA Assay
 Data Path: C:\...Settings\Bioanalyzer\2013-09-25\2013-09-25_003_ChIP_Lib.xad

Created: 9/25/2013 12:51:03 PM
 Modified: 9/25/2013 1:37:40 PM

Electropherogram Summary Continued ...



Overall Results for sample 11 : 48h ChIP

Number of peaks found: 7 Corr. Area 1: 627.0
 Noise: 0.1

Peak table for sample 11 : 48h ChIP

Peak	Size [bp]	Conc. [pg/μl]	Molarity [pmol/l]	Observations
1	35	125.00	5,411.3	Lower Marker
2	317	334.65	1,600.0	
3	334	89.97	408.7	
4	359	110.40	465.4	
5	390	36.52	141.8	
6	398	69.84	266.1	
7	419	85.27	308.1	
8	454	118.09	393.9	
9	10,380	75.00	10.9	Upper Marker

Region table for sample 11 : 48h ChIP

From [bp]	To [bp]	Average Size [bp]	Molarity [pmol/l]	Conc. [pg/μl]	Corr. Area	% of Total	Size distribution in CV [%]	Color
206	609	366	4,749.6	1,076.62	627.0	97	21.5	Blue

Assay Class: High Sensitivity DNA Assay
Data Path: C:\...Settings\Bioanalyzer\2013-09-25\2013-09-25_003_ChIP_Lib.xad

Created: 9/25/2013 12:51:03 PM
Modified: 9/25/2013 1:37:40 PM

Gel Image

