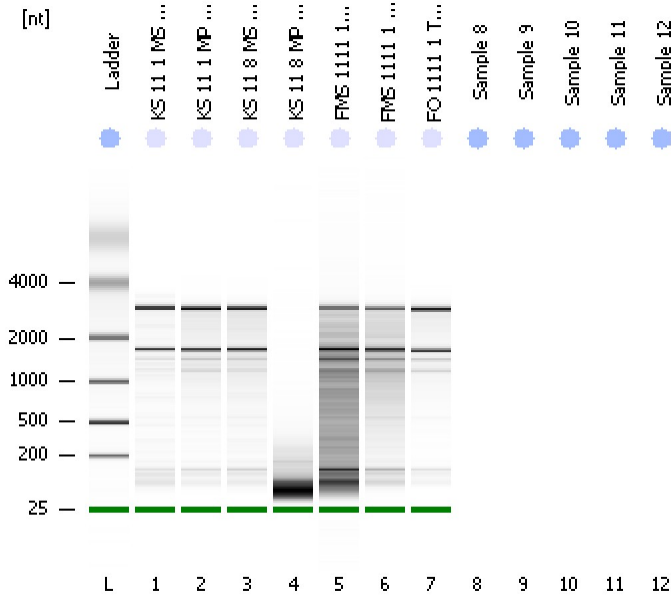


Assay Class: Eukaryote Total RNA Nano
 Data Path: C:\...ents and Settings\Bioanalyzer\2013-09-25\2013-09-25_004.xad

Created: 9/25/2013 2:58:53 PM
 Modified: 9/25/2013 3:15:56 PM

Electrophoresis File Run Summary



Instrument Information:

Instrument Name: DE13701086 Firmware: C.01.069
 Serial#: DE13701086 Type: G2938B

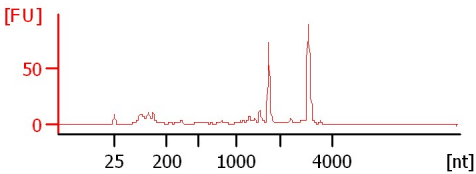
Assay Information:

Assay Origin Path: C:\Program Files\Agilent\2100 bioanalyzer\2100 expert\assays\RNA\Eukaryote Total RNA Nano Series II.xsy
 Assay Class: Eukaryote Total RNA Nano
 Version: 2.6
 Assay Comments: Total RNA Analysis ng sensitivity (Eukaryote)
 © Copyright 2003 - 2009 Agilent Technologies, Inc.

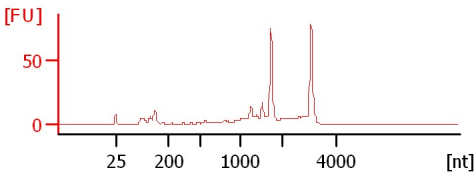
Chip Information:

Chip Lot #:
 Reagent Kit Lot #:
 Chip Comments:

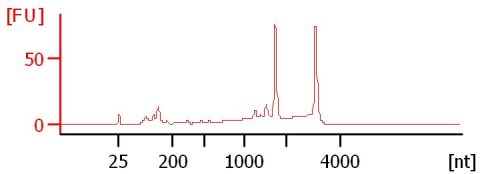
KS 11 1 MS Total RNA 1:4
 RIN: 7.60



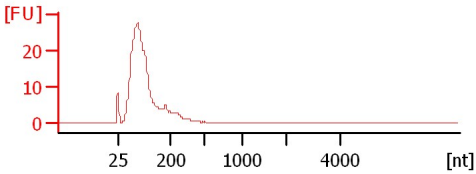
KS 11 1 MP Total RNA 1:4
 RIN: 7



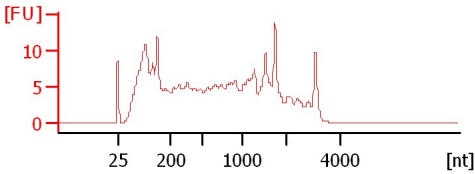
KS 11 8 MS Total RNA 1:4
 RIN: 6.90



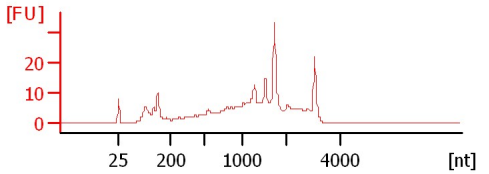
KS 11 8 MP Total RNA 1:4
 RIN: 2.50



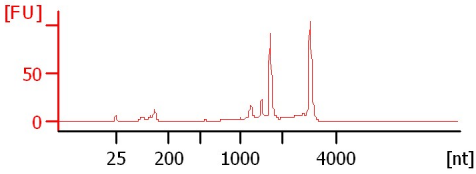
FMS 1111 1* Total RNA 1:4
 RIN: 3.90



FMS 1111 1 Total RNA 1:4
 RIN: 5.50



FO 1111 1 Total RNA 1:4
 RIN: 7.60



Assay Class: Eukaryote Total RNA Nano
 Data Path: C:\...ents and Settings\Bioanalyzer\2013-09-25\2013-09-25_004.xad

Created: 9/25/2013 2:58:53 PM
 Modified: 9/25/2013 3:15:56 PM

Electrophoresis File Run Summary (Chip Summary)

Sample Name	Sample Comment	Status	Result Label	Result Color
KS 11 1 MS Total RNA 1:4		✓	RIN: 7.60	
KS 11 1 MP Total RNA 1:4		✓	RIN:7	
KS 11 8 MS Total RNA 1:4		✓	RIN: 6.90	
KS 11 8 MP Total RNA 1:4		✓	RIN: 2.50	
FMS 1111 1* Total RNA 1:4		✓	RIN: 3.90	
FMS 1111 1 Total RNA 1:4		✓	RIN: 5.50	
FO 1111 1 Total RNA 1:4		✓	RIN: 7.60	
Sample 8				
Sample 9				
Sample 10				
Sample 11				
Sample 12				
Ladder		✓	All Other Samples	

Chip Lot #

Reagent Kit Lot #

Chip Comments :

Assay Class: Eukaryote Total RNA Nano
Data Path: C:\...ents and Settings\Bioanalyzer\2013-09-25\2013-09-25_004.xad

Created: 9/25/2013 2:58:53 PM
Modified: 9/25/2013 3:15:56 PM

Electrophoresis Assay Details

General Analysis Settings

Number of Available Sample and Ladder Wells (Max.) : 13
Minimum Visible Range [s] : 17
Maximum Visible Range [s] : 70
Start Analysis Time Range [s] : 19
End Analysis Time Range [s] : 69
Ladder Concentration [ng/ μ l] : 150
Lower Marker Concentration [ng/ μ l] : 0
Upper Marker Concentration [ng/ μ l] : 0
Used Lower Marker for Quantitation
Standard Curve Fit is Logarithmic
Show Data Aligned to Lower Marker

Integrator Settings

Integration Start Time [s] : 19
Integration End Time [s] : 69
Slope Threshold : 0.6
Height Threshold [FU] : 0.5
Area Threshold : 0.2
Width Threshold [s] : 0.5
Baseline Plateau [s] : 6

Filter Settings

Filter Width [s] : 0.5
Polynomial Order : 4

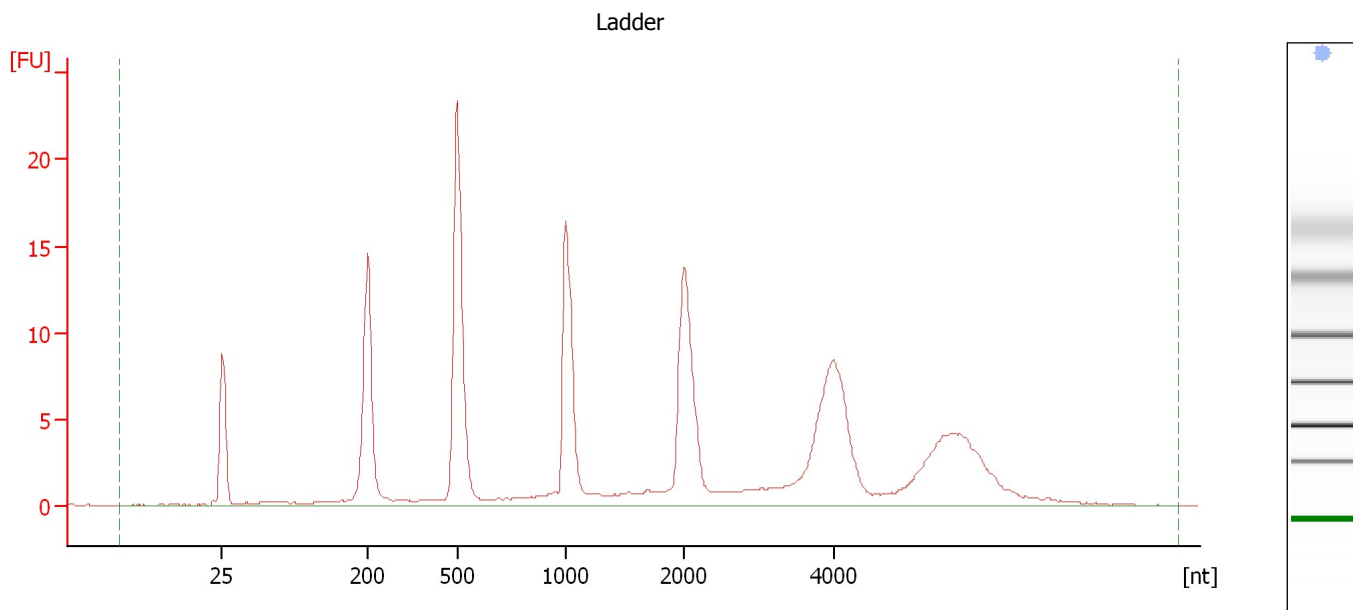
Ladder

Ladder Peak	Size
1	25
2	200
3	500
4	1000
5	2000
6	4000

Assay Class: Eukaryote Total RNA Nano
Data Path: C:\...ents and Settings\Bioanalyzer\2013-09-25\2013-09-25_004.xad

Created: 9/25/2013 2:58:53 PM
Modified: 9/25/2013 3:15:56 PM

Electropherogram Summary



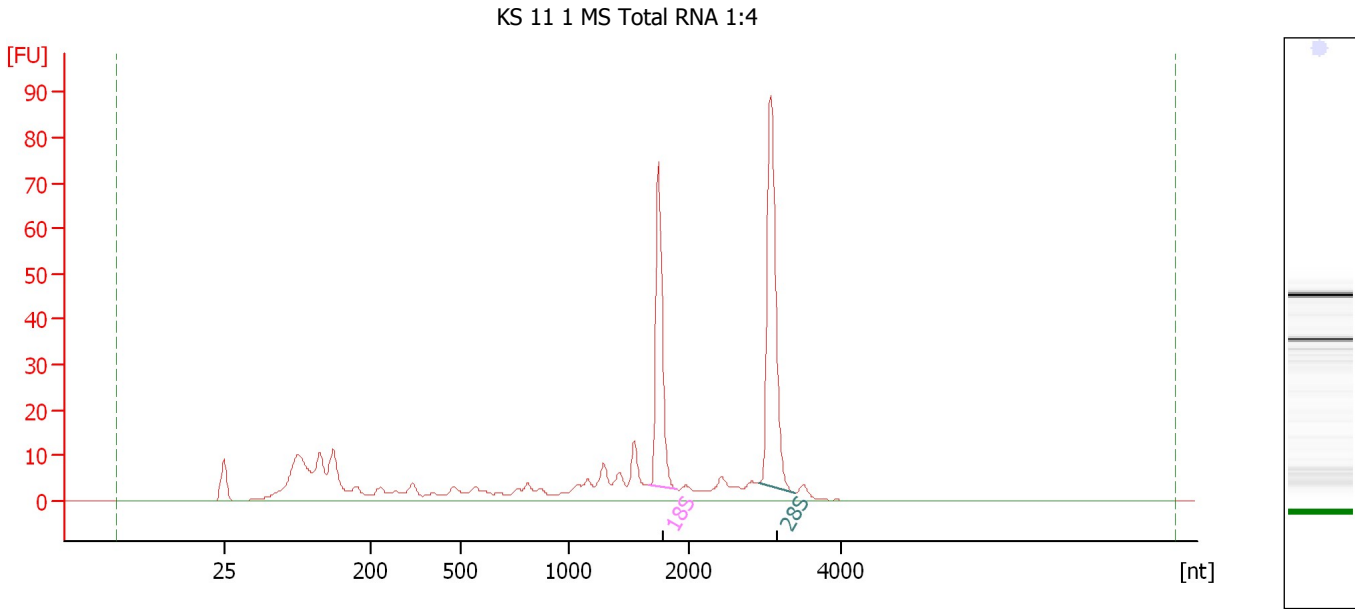
Overall Results for Ladder

RNA Area:	177.4	Result Flagging Color:	
RNA Concentration:	150 ng/μl	Result Flagging Label:	All Other Samples

Assay Class: Eukaryote Total RNA Nano
 Data Path: C:\...ents and Settings\Bioanalyzer\2013-09-25\2013-09-25_004.xad

Created: 9/25/2013 2:58:53 PM
 Modified: 9/25/2013 3:15:56 PM

Electropherogram Summary Continued ...



Overall Results for sample 1 : KS 11 1 MS Total RNA 1:4

RNA Area:	366.5	RNA Integrity Number (RIN):	7.6 (B.02.08)
RNA Concentration:	310 ng/μl	Result Flagging Color:	
rRNA Ratio [28s / 18s]:	1.4	Result Flagging Label:	RIN: 7.60

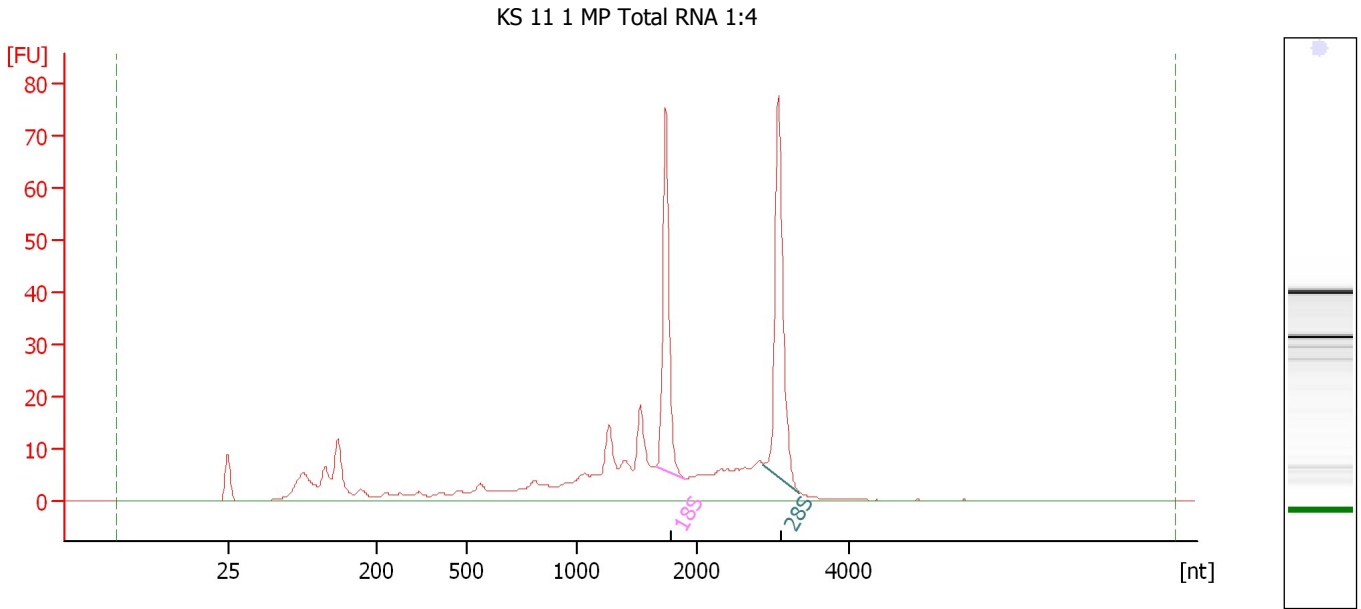
Fragment table for sample 1 : KS 11 1 MS Total RNA 1:4

Name	Start Size [nt]	End Size [nt]	Area	% of total Area
18S	1,664	1,896	54.1	14.8
28S	2,913	3,409	77.7	21.2

Assay Class: Eukaryote Total RNA Nano
Data Path: C:\...ents and Settings\Bioanalyzer\2013-09-25\2013-09-25_004.xad

Created: 9/25/2013 2:58:53 PM
Modified: 9/25/2013 3:15:56 PM

Electropherogram Summary Continued ...



Overall Results for sample 2 : KS 11 1 MP Total RNA 1:4

RNA Area: 368.4 RNA Integrity Number (RIN): 7 (B.02.08)
RNA Concentration: 312 ng/μl Result Flagging Color:
rRNA Ratio [28s / 18s]: 1.2 Result Flagging Label: RIN:7

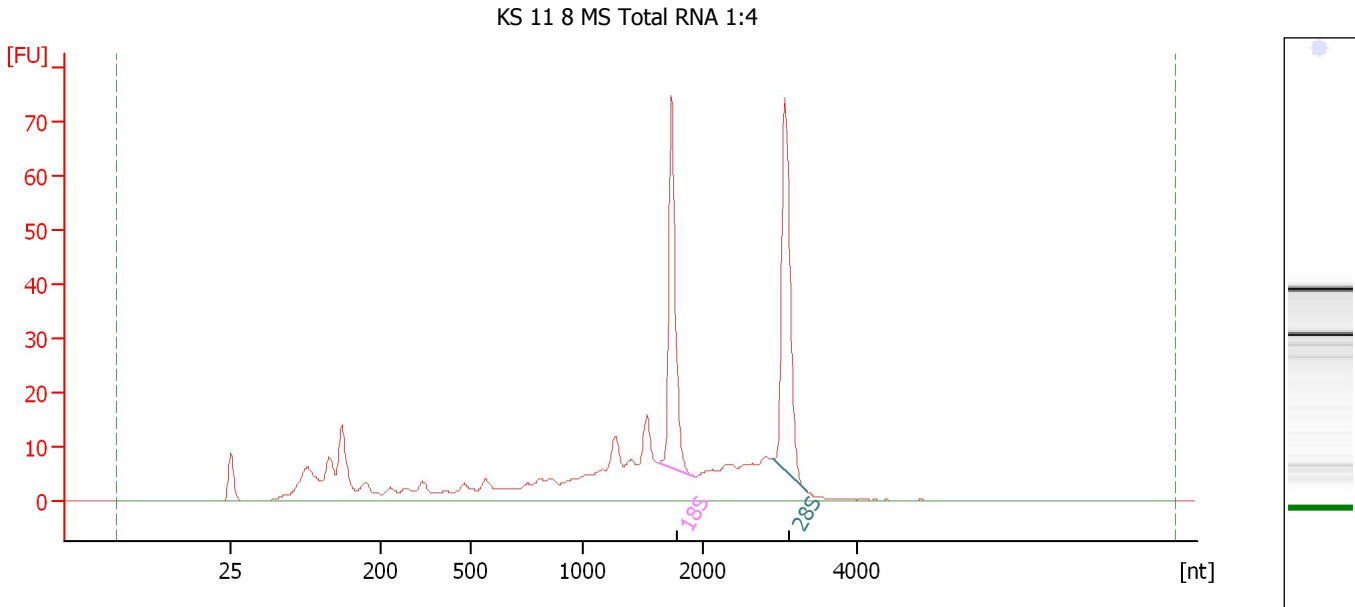
Fragment table for sample 2 : KS 11 1 MP Total RNA 1:4

Name	Start Size [nt]	End Size [nt]	Area	% of total Area
18S	1,662	1,892	53.2	14.4
28S	2,869	3,347	65.2	17.7

Assay Class: Eukaryote Total RNA Nano
 Data Path: C:\...ents and Settings\Bioanalyzer\2013-09-25\2013-09-25_004.xad

Created: 9/25/2013 2:58:53 PM
 Modified: 9/25/2013 3:15:56 PM

Electropherogram Summary Continued ...



Overall Results for sample 3 : KS 11 8 MS Total RNA 1:4

RNA Area:	397.8	RNA Integrity Number (RIN):	6.9 (B.02.08)
RNA Concentration:	336 ng/μl	Result Flagging Color:	
rRNA Ratio [28s / 18s]:	1.1	Result Flagging Label:	RIN: 6.90

Fragment table for sample 3 : KS 11 8 MS Total RNA 1:4

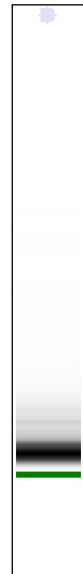
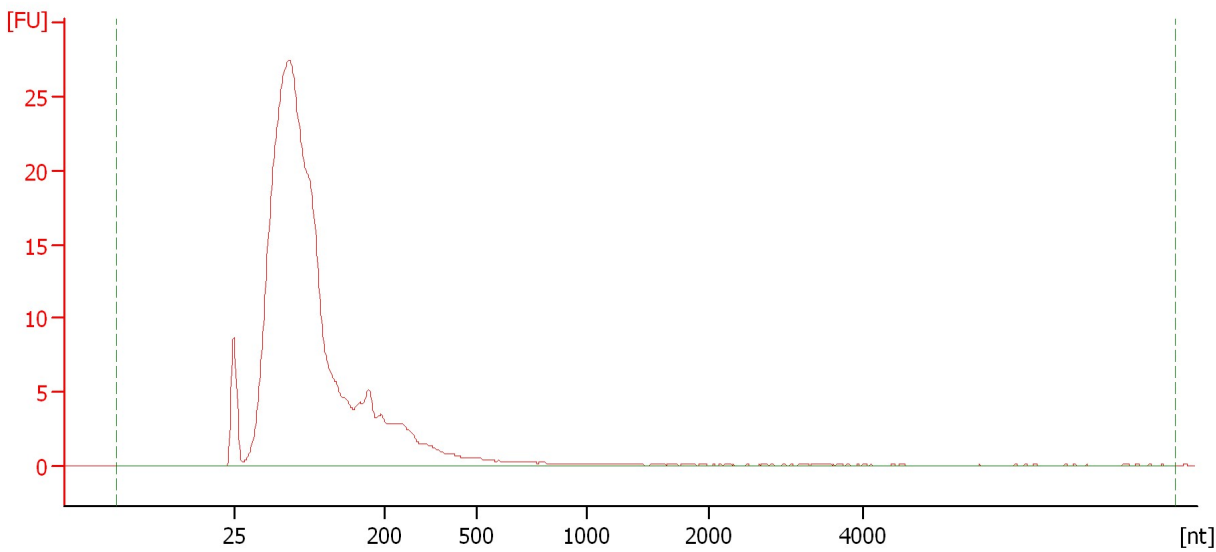
Name	Start Size [nt]	End Size [nt]	Area	% of total Area
18S	1,640	1,931	53.7	13.5
28S	2,911	3,344	60.3	15.1

Assay Class: Eukaryote Total RNA Nano
Data Path: C:\...ents and Settings\Bioanalyzer\2013-09-25\2013-09-25_004.xad

Created: 9/25/2013 2:58:53 PM
Modified: 9/25/2013 3:15:56 PM

Electropherogram Summary Continued ...

KS 11 8 MP Total RNA 1:4



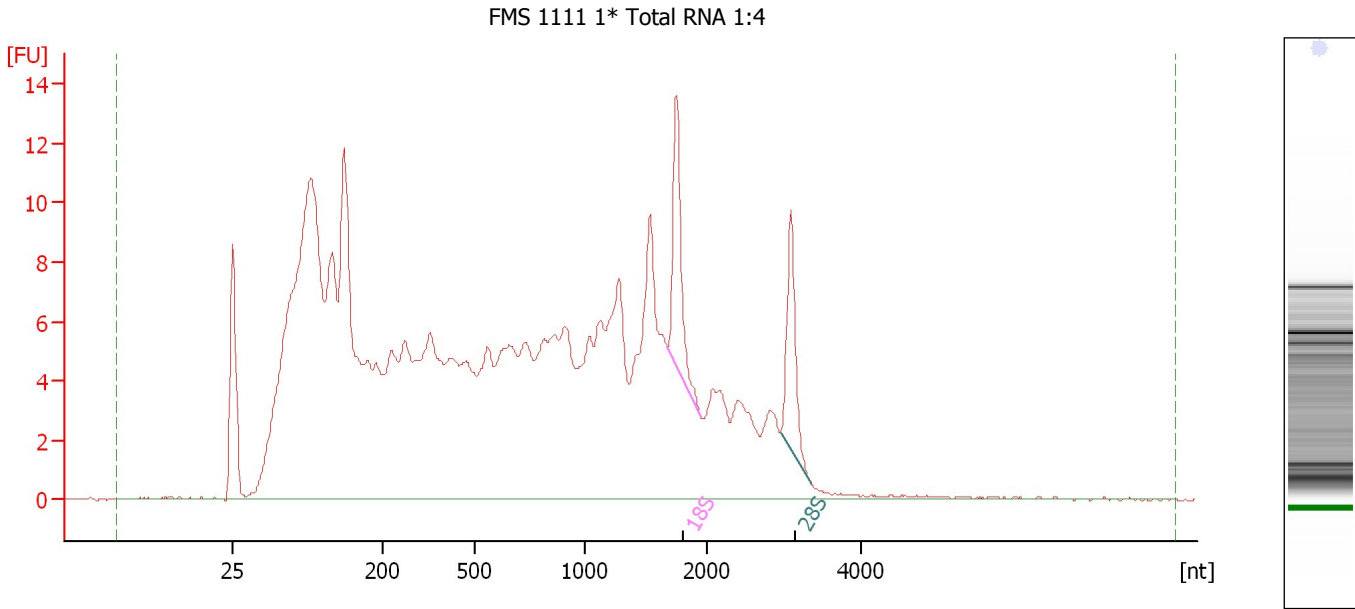
Overall Results for sample 4 : KS 11 8 MP Total RNA 1:4

RNA Area:	283.5	RNA Integrity Number (RIN):	2.5 (B.02.08)
RNA Concentration:	240 ng/μl	Result Flagging Color:	
rRNA Ratio [28s / 18s]:	0.0	Result Flagging Label:	RIN: 2.50

Assay Class: Eukaryote Total RNA Nano
 Data Path: C:\...ents and Settings\Bioanalyzer\2013-09-25\2013-09-25_004.xad

Created: 9/25/2013 2:58:53 PM
 Modified: 9/25/2013 3:15:56 PM

Electropherogram Summary Continued ...



Overall Results for sample 5 : FMS 1111 1* Total RNA 1:4

RNA Area:	359.4	RNA Integrity Number (RIN):	3.9 (B.02.08)
RNA Concentration:	304 ng/μl	Result Flagging Color:	
rRNA Ratio [28s / 18s]:	0.9	Result Flagging Label:	RIN: 3.90

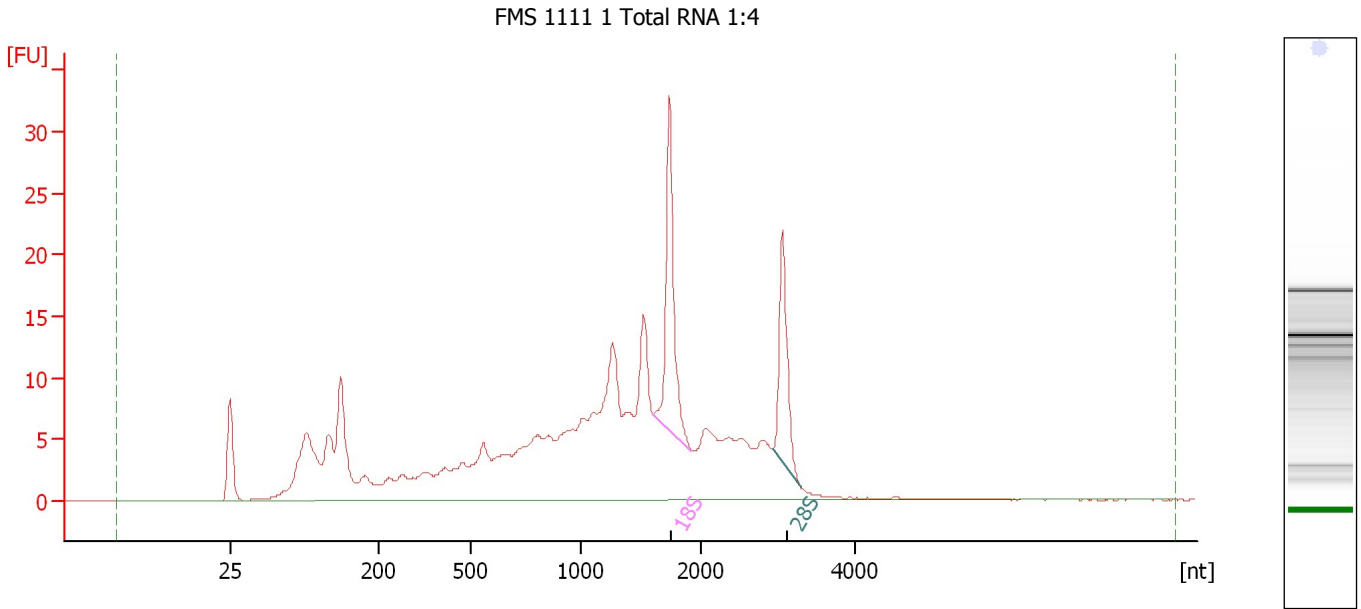
Fragment table for sample 5 : FMS 1111 1* Total RNA 1:4

Name	Start Size [nt]	End Size [nt]	Area	% of total Area
18S	1,670	1,942	8.3	2.3
28S	2,952	3,341	7.2	2.0

Assay Class: Eukaryote Total RNA Nano
Data Path: C:\...ents and Settings\Bioanalyzer\2013-09-25\2013-09-25_004.xad

Created: 9/25/2013 2:58:53 PM
Modified: 9/25/2013 3:15:56 PM

Electropherogram Summary Continued ...



Overall Results for sample 6 : FMS 1111 1 Total RNA 1:4

RNA Area: 316.6 RNA Integrity Number (RIN): 5.5 (B.02.08)
RNA Concentration: 268 ng/μl Result Flagging Color:
rRNA Ratio [28s / 18s]: 0.6 Result Flagging Label: RIN: 5.50

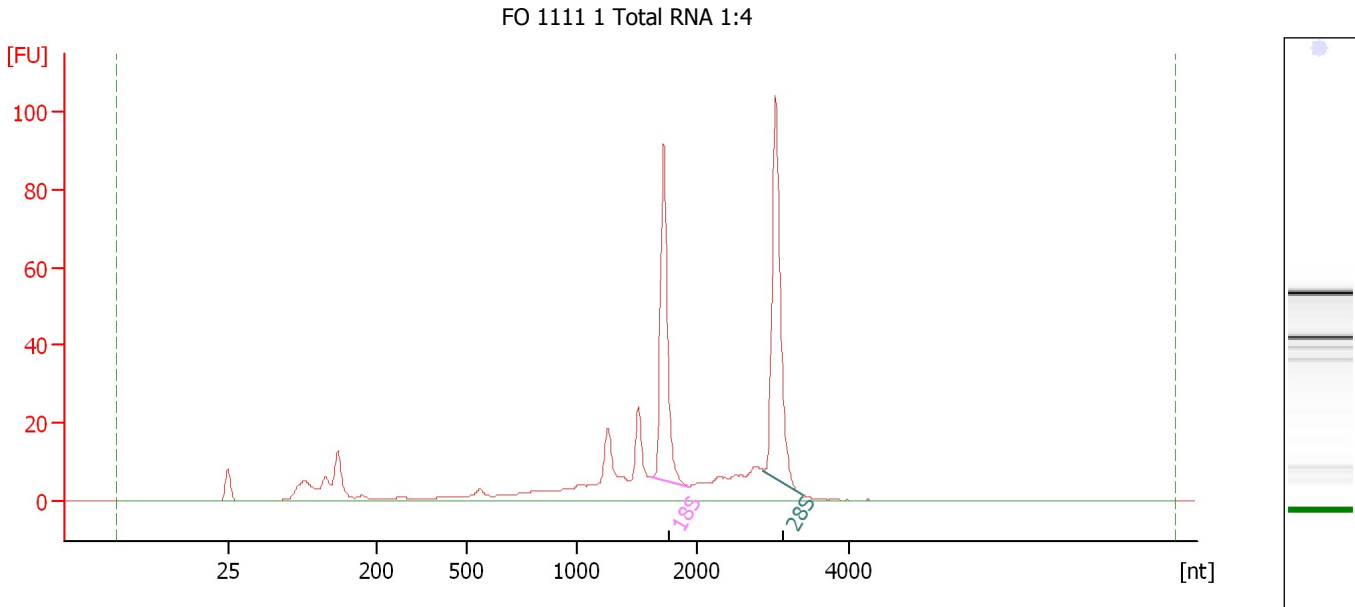
Fragment table for sample 6 : FMS 1111 1 Total RNA 1:4

Name	Start Size [nt]	End Size [nt]	Area	% of total Area
18S	1,603	1,921	25.0	7.9
28S	2,925	3,303	16.0	5.1

Assay Class: Eukaryote Total RNA Nano
Data Path: C:\...ents and Settings\Bioanalyzer\2013-09-25\2013-09-25_004.xad

Created: 9/25/2013 2:58:53 PM
Modified: 9/25/2013 3:15:56 PM

Electropherogram Summary Continued ...



Overall Results for sample 7 : FO 1111 1 Total RNA 1:4

RNA Area: 402.8 RNA Integrity Number (RIN): 7.6 (B.02.08)
RNA Concentration: 341 ng/μl Result Flagging Color:
rRNA Ratio [28s / 18s]: 1.2 Result Flagging Label: RIN: 7.60

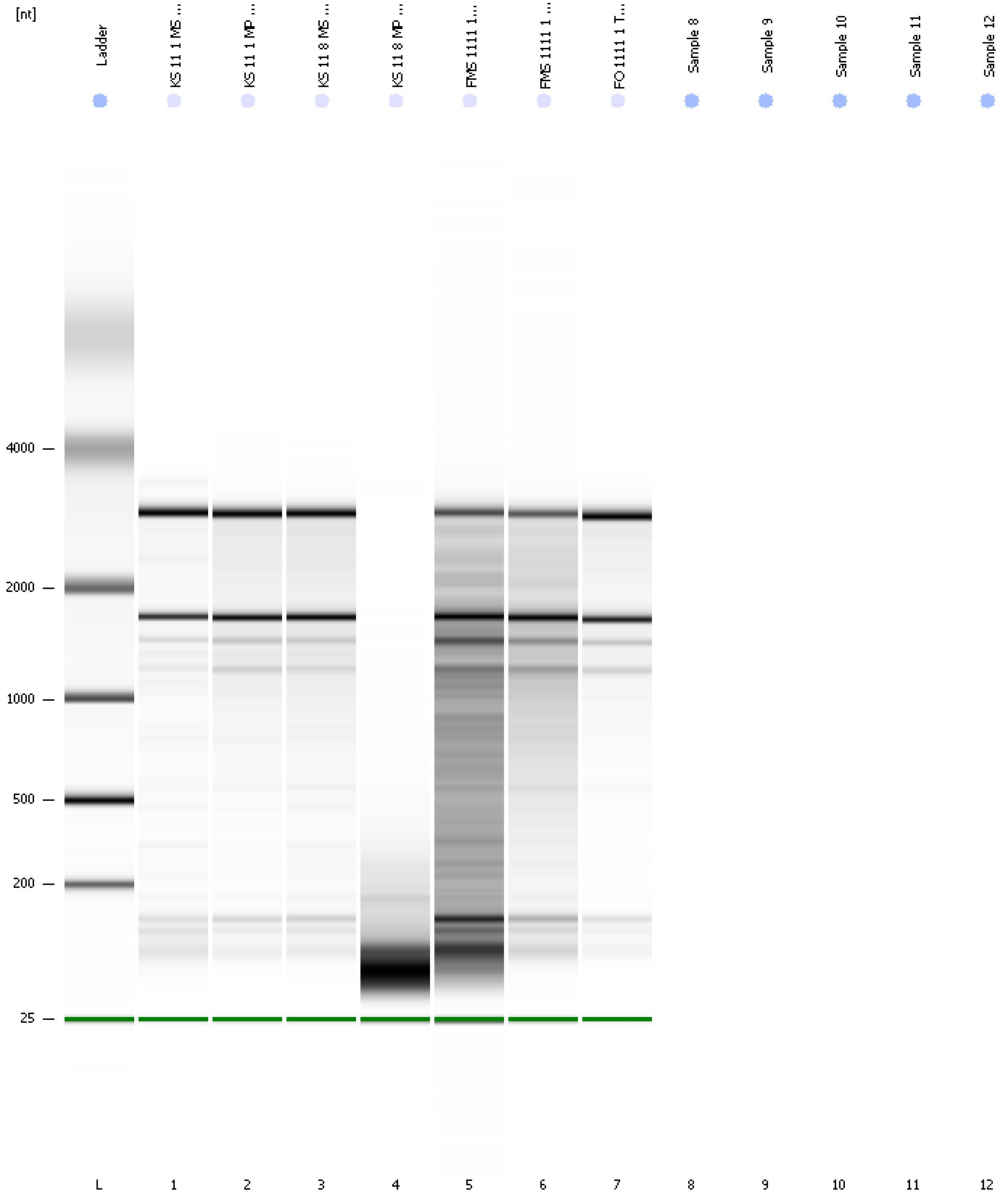
Fragment table for sample 7 : FO 1111 1 Total RNA 1:4

Name	Start Size [nt]	End Size [nt]	Area	% of total Area
18S	1,609	1,928	71.2	17.7
28S	2,869	3,389	88.1	21.9

Assay Class: Eukaryote Total RNA Nano
Data Path: C:\...ents and Settings\Bioanalyzer\2013-09-25\2013-09-25_004.xad

Created: 9/25/2013 2:58:53 PM
Modified: 9/25/2013 3:15:56 PM

Gel Image



Assay Class: Eukaryote Total RNA Nano
Data Path: C:\...ents and Settings\Bioanalyzer\2013-09-25\2013-09-25_004.xad

Created: 9/25/2013 2:58:53 PM
Modified: 9/25/2013 3:15:56 PM

Invalid Samples

Sample 8 has not been run, no results available.

Sample 9 has not been run, no results available.

Sample 10 has not been run, no results available.

Sample 11 has not been run, no results available.

Sample 12 has not been run, no results available.