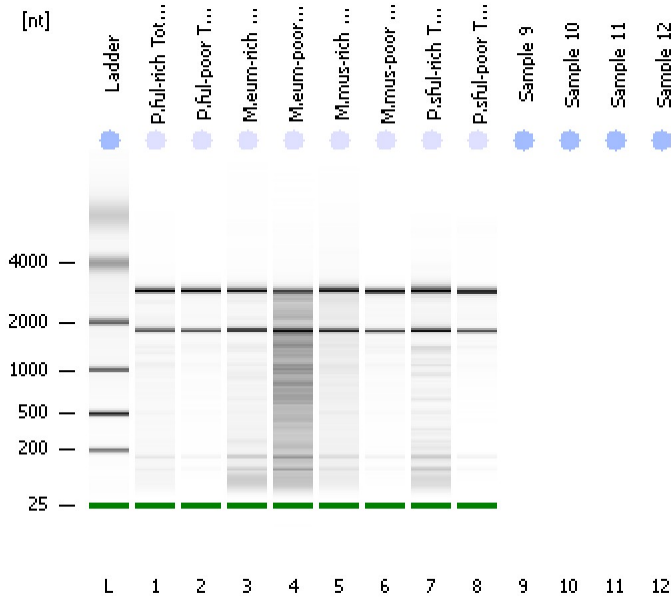


Assay Class: Eukaryote Total RNA Nano
 Data Path: C:\...ents and Settings\Bioanalyzer\2013-09-26\2013-09-26_004.xad

Created: 9/26/2013 4:40:35 PM
 Modified: 9/26/2013 5:12:28 PM

Electrophoresis File Run Summary



Instrument Information:

Instrument Name: DE13701086 Firmware: C.01.069
 Serial#: DE13701086 Type: G2938B

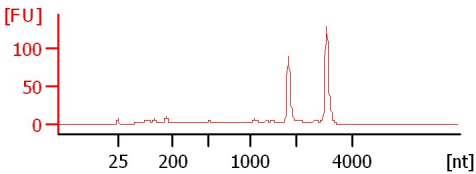
Assay Information:

Assay Origin Path: C:\Program Files\Agilent\2100 bioanalyzer\2100 expert\assays\RNA\Eukaryote Total RNA Nano Series II.xsy
 Assay Class: Eukaryote Total RNA Nano
 Version: 2.6
 Assay Comments: Total RNA Analysis ng sensitivity (Eukaryote)
 © Copyright 2003 - 2009 Agilent Technologies, Inc.

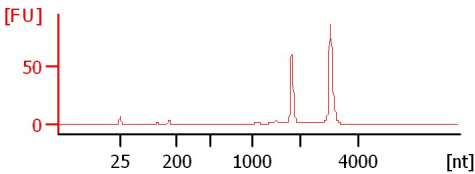
Chip Information:

Chip Lot #:
 Reagent Kit Lot #:
 Chip Comments:

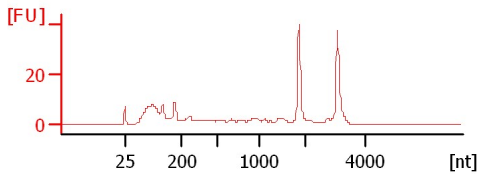
P.ful-rich Total RNA 1:6
 RIN:6



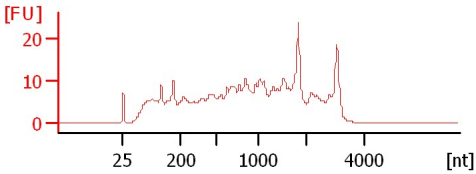
P.ful-poor Total RNA
 RIN: 6.30



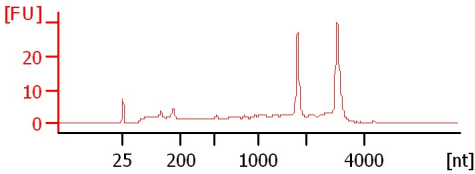
M.eum-rich Total RNA
 RIN:6



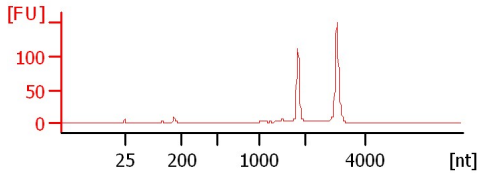
M.eum-poor Total RNA
 RIN: 3.70



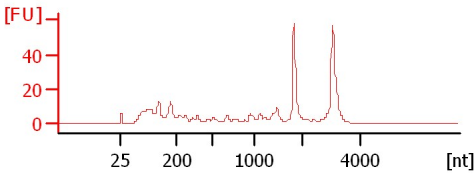
M.mus-rich Total RNA
 RIN: 9.70



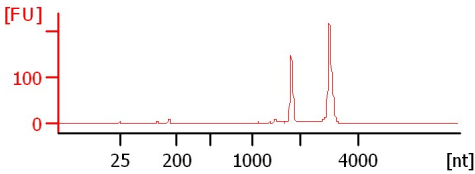
M.mus-poor Total RNA 1:3
 RIN: 6.20



P.sful-rich Total RNA
 RIN: 6.10



P.sful-poor Total RNA
 RIN: 6.40



Assay Class: Eukaryote Total RNA Nano
Data Path: C:\...ents and Settings\Bioanalyzer\2013-09-26\2013-09-26_004.xad

Created: 9/26/2013 4:40:35 PM
Modified: 9/26/2013 5:12:28 PM

Electrophoresis File Run Summary (Chip Summary)

Sample Name	Sample Comment	Status	Result Label	Result Color
P.ful-rich Total RNA 1:6		✓	RIN:6	
P.ful-poor Total RNA		✓	RIN: 6.30	
M.eum-rich Total RNA		✓	RIN:6	
M.eum-poor Total RNA		✓	RIN: 3.70	
M.mus-rich Total RNA		✓	RIN: 9.70	
M.mus-poor Total RNA 1:3		✓	RIN: 6.20	
P.sful-rich Total RNA		✓	RIN: 6.10	
P.sful-poor Total RNA		✓	RIN: 6.40	
Sample 9				
Sample 10				
Sample 11				
Sample 12				
Ladder		✓	All Other Samples	

Chip Lot #

Reagent Kit Lot #

Chip Comments :

Assay Class: Eukaryote Total RNA Nano
Data Path: C:\...ents and Settings\Bioanalyzer\2013-09-26\2013-09-26_004.xad

Created: 9/26/2013 4:40:35 PM
Modified: 9/26/2013 5:12:28 PM

Electrophoresis Assay Details

General Analysis Settings

Number of Available Sample and Ladder Wells (Max.) : 13
Minimum Visible Range [s] : 17
Maximum Visible Range [s] : 70
Start Analysis Time Range [s] : 19
End Analysis Time Range [s] : 69
Ladder Concentration [ng/μl] : 150
Lower Marker Concentration [ng/μl] : 0
Upper Marker Concentration [ng/μl] : 0
Used Lower Marker for Quantitation
Standard Curve Fit is Logarithmic
Show Data Aligned to Lower Marker

Integrator Settings

Integration Start Time [s] : 19
Integration End Time [s] : 69
Slope Threshold : 0.6
Height Threshold [FU] : 0.5
Area Threshold : 0.2
Width Threshold [s] : 0.5
Baseline Plateau [s] : 6

Filter Settings

Filter Width [s] : 0.5
Polynomial Order : 4

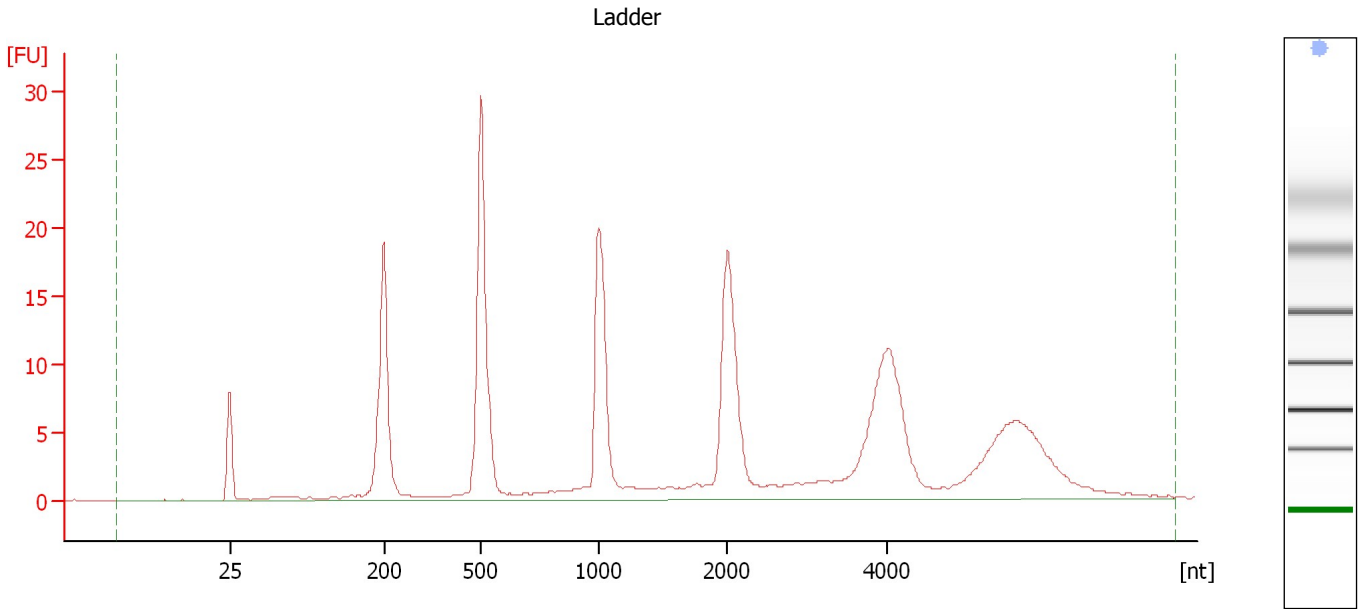
Ladder

Ladder Peak	Size
1	25
2	200
3	500
4	1000
5	2000
6	4000

Assay Class: Eukaryote Total RNA Nano
Data Path: C:\...ents and Settings\Bioanalyzer\2013-09-26\2013-09-26_004.xad

Created: 9/26/2013 4:40:35 PM
Modified: 9/26/2013 5:12:28 PM

Electropherogram Summary



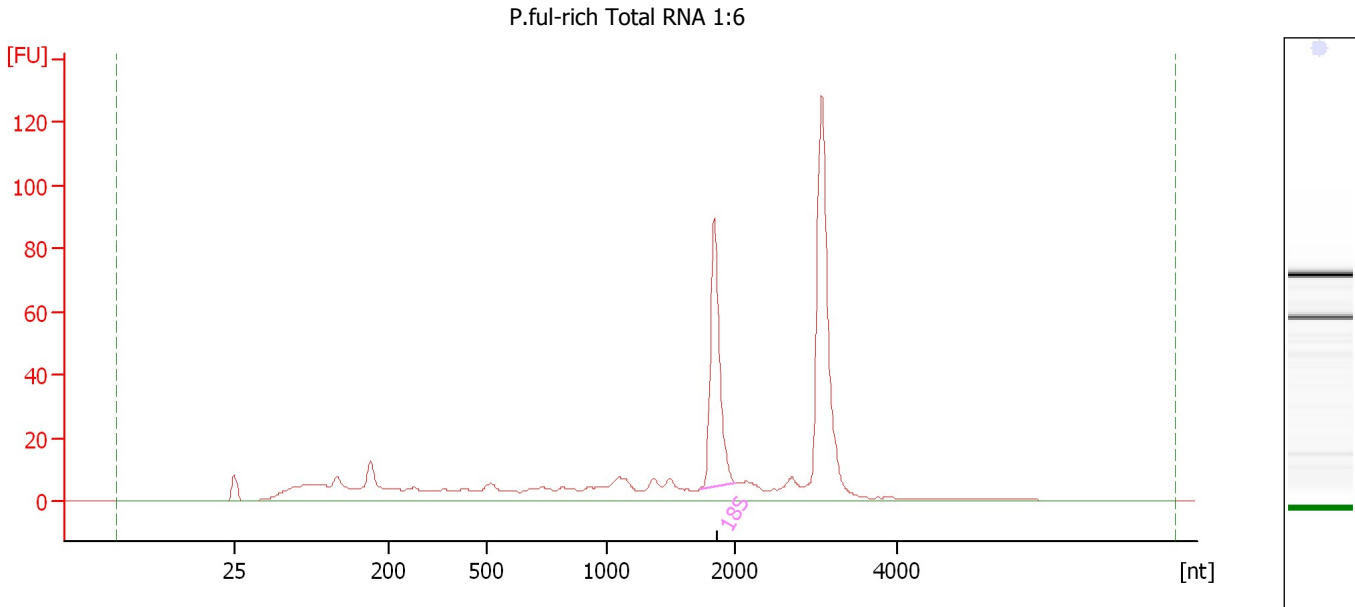
Overall Results for Ladder

RNA Area:	226.8	Result Flagging Color:	
RNA Concentration:	150 ng/μl	Result Flagging Label:	All Other Samples

Assay Class: Eukaryote Total RNA Nano
Data Path: C:\...ents and Settings\Bioanalyzer\2013-09-26\2013-09-26_004.xad

Created: 9/26/2013 4:40:35 PM
Modified: 9/26/2013 5:12:28 PM

Electropherogram Summary Continued ...



Overall Results for sample 1 : P. ful-rich Total RNA 1:6

RNA Area: 541.6 RNA Integrity Number (RIN): 6 (B.02.08, Anomaly Threshold(s) manually adapted)
RNA Concentration: 358 ng/μl
rRNA Ratio [28s / 18s]: 0.0
Result Flagging Color:
Result Flagging Label: RIN:6

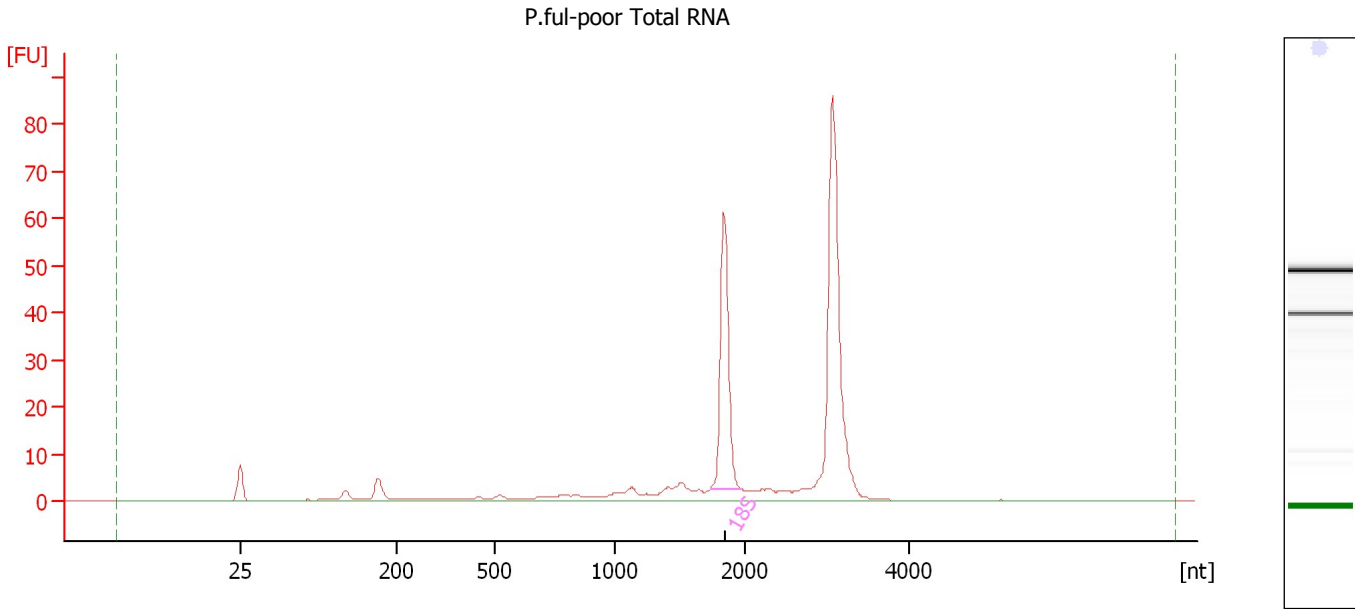
Fragment table for sample 1 : P. ful-rich Total RNA 1:6

Name	Start Size [nt]	End Size [nt]	Area	% of total Area
18S	1,726	2,002	89.3	16.5

Assay Class: Eukaryote Total RNA Nano
Data Path: C:\...ents and Settings\Bioanalyzer\2013-09-26\2013-09-26_004.xad

Created: 9/26/2013 4:40:35 PM
Modified: 9/26/2013 5:12:28 PM

Electropherogram Summary Continued ...



Overall Results for sample 2 : P.ful-poor Total RNA

RNA Area: 228.2 RNA Integrity Number (RIN): 6.3 (B.02.08, Anomaly Threshold(s) manually adapted)
RNA Concentration: 151 ng/μl
rRNA Ratio [28s / 18s]: 0.0
Result Flagging Color:
Result Flagging Label: RIN: 6.30

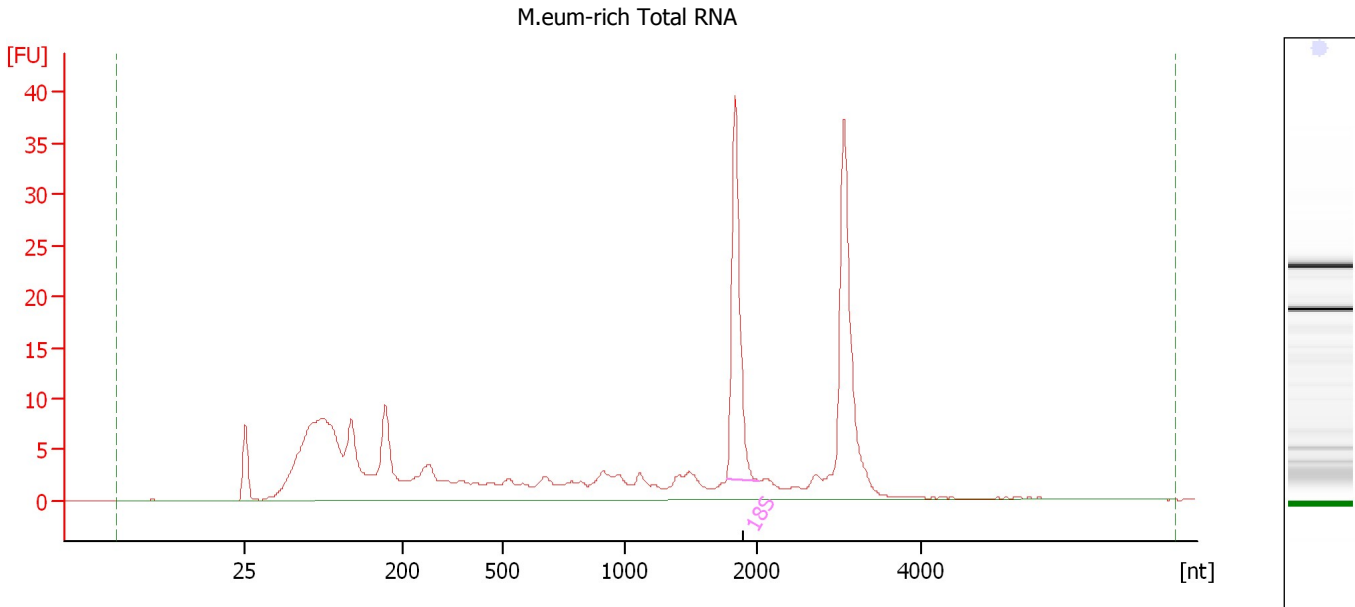
Fragment table for sample 2 : P.ful-poor Total RNA

Name	Start Size [nt]	End Size [nt]	Area	% of total Area
18S	1,729	1,970	52.0	22.8

Assay Class: Eukaryote Total RNA Nano
Data Path: C:\...ents and Settings\Bioanalyzer\2013-09-26\2013-09-26_004.xad

Created: 9/26/2013 4:40:35 PM
Modified: 9/26/2013 5:12:28 PM

Electropherogram Summary Continued ...



Overall Results for sample 3 : M.eum-rich Total RNA

RNA Area: 265.3 RNA Integrity Number (RIN): 6 (B.02.08, Anomaly Threshold(s) manually adapted)
RNA Concentration: 175 ng/μl
rRNA Ratio [28s / 18s]: 0.0
Result Flagging Color:
Result Flagging Label: RIN:6

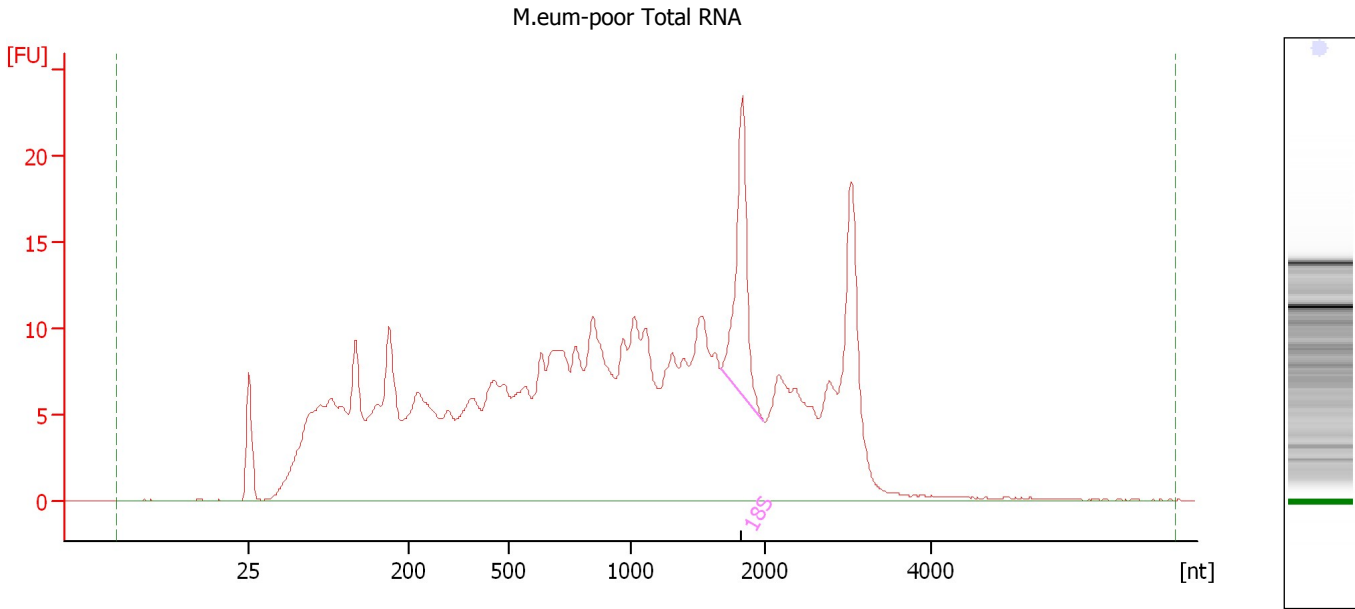
Fragment table for sample 3 : M.eum-rich Total RNA

Name	Start Size [nt]	End Size [nt]	Area	% of total Area
18S	1,771	2,028	33.9	12.8

Assay Class: Eukaryote Total RNA Nano
Data Path: C:\...ents and Settings\Bioanalyzer\2013-09-26\2013-09-26_004.xad

Created: 9/26/2013 4:40:35 PM
Modified: 9/26/2013 5:12:28 PM

Electropherogram Summary Continued ...



Overall Results for sample 4 : M.eum-poor Total RNA

RNA Area:	484.4	RNA Integrity Number (RIN):	3.7 (B.02.08)
RNA Concentration:	320 ng/μl	Result Flagging Color:	
rRNA Ratio [28s / 18s]:	0.0	Result Flagging Label:	RIN: 3.70

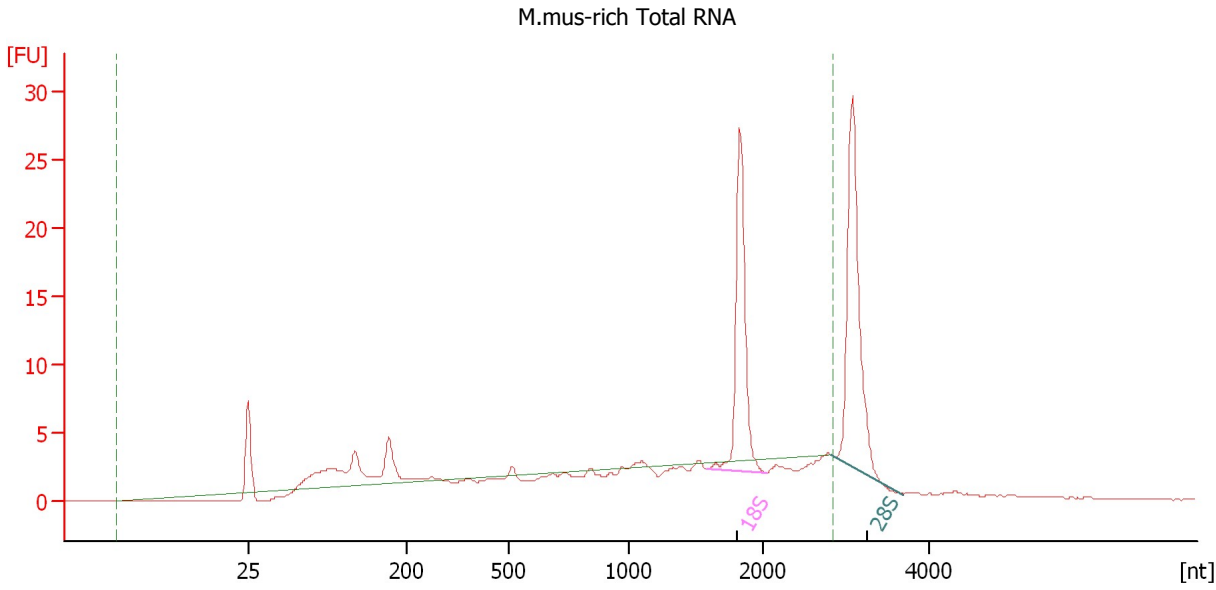
Fragment table for sample 4 : M.eum-poor Total RNA

Name	Start Size [nt]	End Size [nt]	Area	% of total Area
18S	1,671	1,992	20.1	4.2

Assay Class: Eukaryote Total RNA Nano
Data Path: C:\...ents and Settings\Bioanalyzer\2013-09-26\2013-09-26_004.xad

Created: 9/26/2013 4:40:35 PM
Modified: 9/26/2013 5:12:28 PM

Electropherogram Summary Continued ...



Setpoint Deviations for sample 5 : M.mus-rich Total RNA

End Analysis Time Range [s] : 53

Overall Results for sample 5 : M.mus-rich Total RNA

RNA Area:	42.1	RNA Integrity Number (RIN):	9.7 (B.02.08, Anomaly Threshold(s) manually adapted)
RNA Concentration:	28 ng/µl	Result Flagging Color:	
rRNA Ratio [28s / 18s]:	0.0	Result Flagging Label:	RIN: 9.70

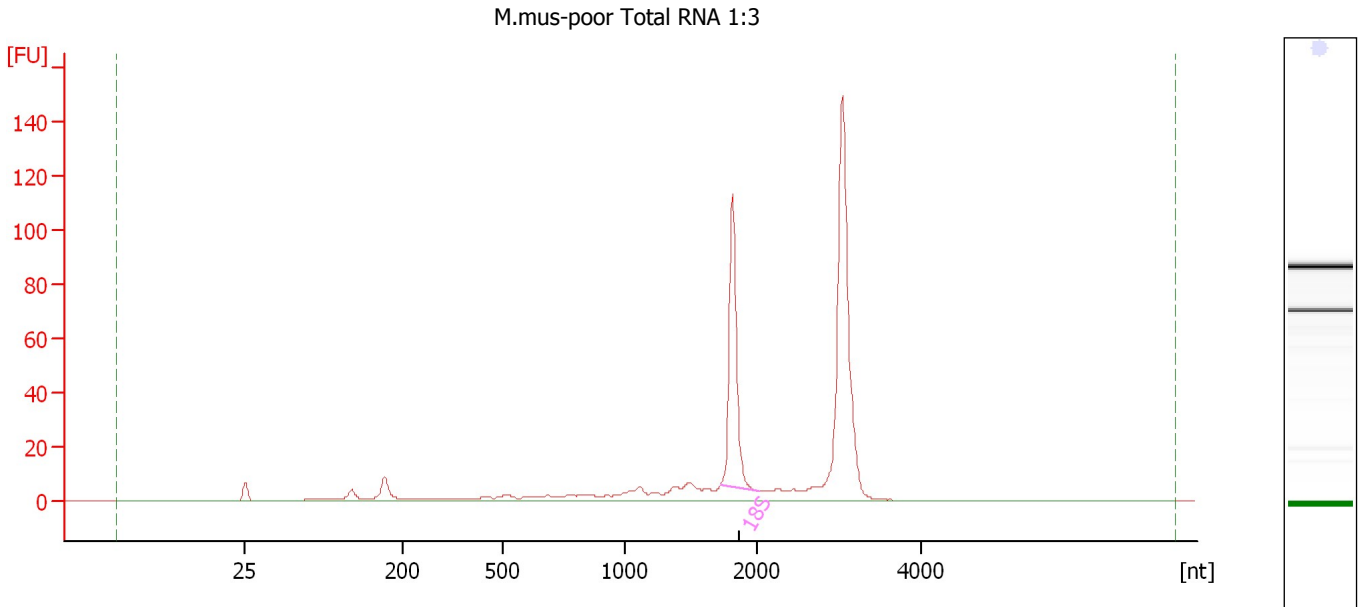
Fragment table for sample 5 : M.mus-rich Total RNA

Name	Start Size [nt]	End Size [nt]	Area	% of total Area
18S	1,589	2,065	24.5	58.1
28S	3,702	2,825	0.0	0.0

Assay Class: Eukaryote Total RNA Nano
Data Path: C:\...ents and Settings\Bioanalyzer\2013-09-26\2013-09-26_004.xad

Created: 9/26/2013 4:40:35 PM
Modified: 9/26/2013 5:12:28 PM

Electropherogram Summary Continued ...



Overall Results for sample 6 : M.mus-poor Total RNA 1:3

RNA Area:	420.4	RNA Integrity Number (RIN):	6.2 (B.02.08, Anomaly Threshold(s) manually adapted)
RNA Concentration:	278 ng/μl		
rRNA Ratio [28s / 18s]:	0.0	Result Flagging Color:	
		Result Flagging Label:	RIN: 6.20

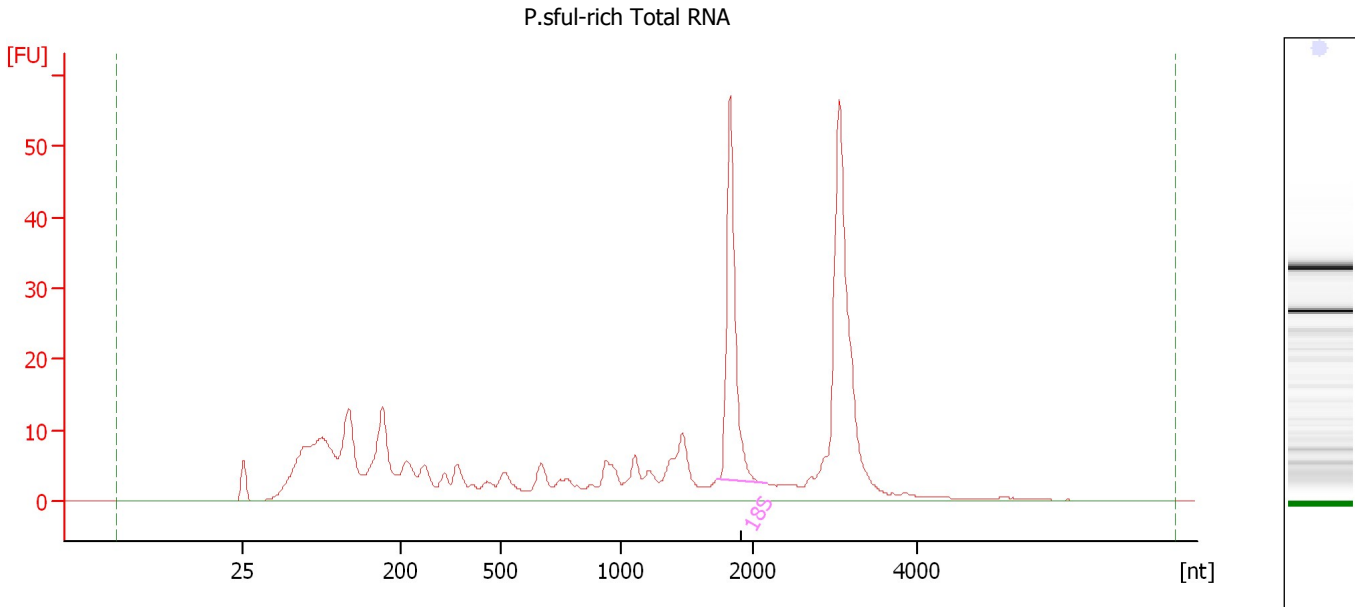
Fragment table for sample 6 : M.mus-poor Total RNA 1:3

Name	Start Size [nt]	End Size [nt]	Area	% of total Area
18S	1,728	2,043	92.1	21.9

Assay Class: Eukaryote Total RNA Nano
 Data Path: C:\...ents and Settings\Bioanalyzer\2013-09-26\2013-09-26_004.xad

Created: 9/26/2013 4:40:35 PM
 Modified: 9/26/2013 5:12:28 PM

Electropherogram Summary Continued ...



Overall Results for sample 7 : P.sful-rich Total RNA

RNA Area:	424.5	RNA Integrity Number (RIN):	6.1 (B.02.08, Anomaly Threshold(s) manually adapted)
RNA Concentration:	281 ng/μl		
rRNA Ratio [28s / 18s]:	0.0	Result Flagging Color:	
		Result Flagging Label:	RIN: 6.10

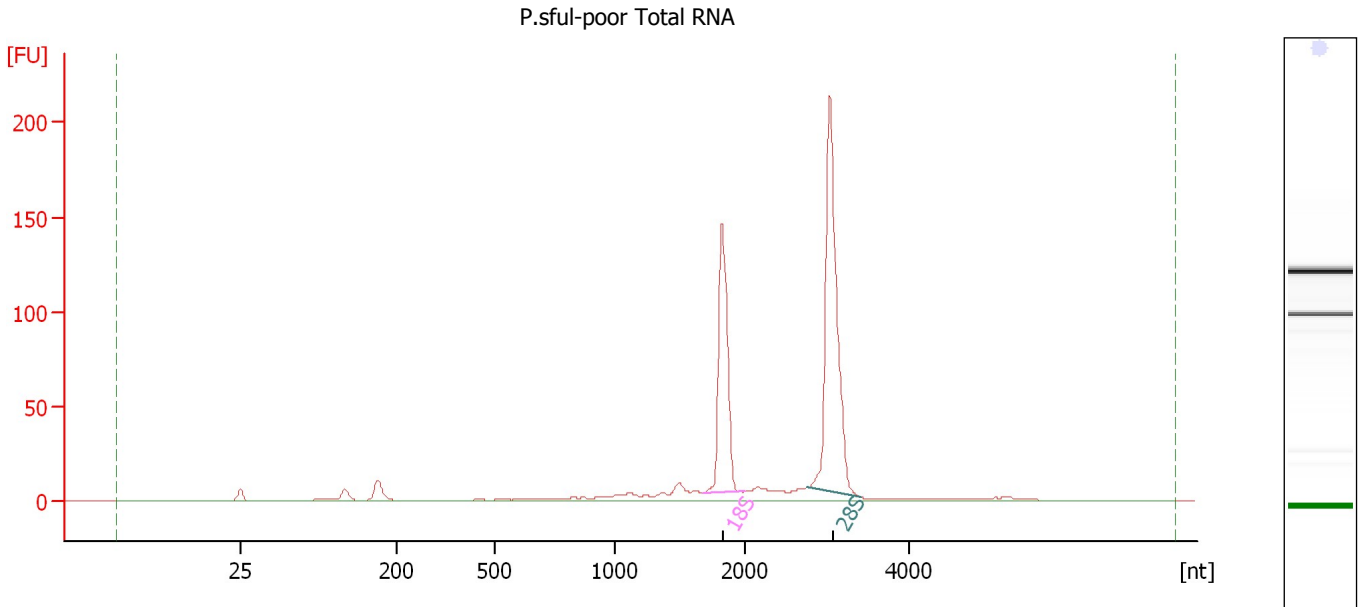
Fragment table for sample 7 : P.sful-rich Total RNA

Name	Start Size [nt]	End Size [nt]	Area	% of total Area
18S	1,729	2,189	51.9	12.2

Assay Class: Eukaryote Total RNA Nano
 Data Path: C:\...ents and Settings\Bioanalyzer\2013-09-26\2013-09-26_004.xad

Created: 9/26/2013 4:40:35 PM
 Modified: 9/26/2013 5:12:28 PM

Electropherogram Summary Continued ...



Overall Results for sample 8 : P.sful-poor Total RNA

RNA Area:	569.4	RNA Integrity Number (RIN):	6.4 (B.02.08, Anomaly Threshold(s) manually adapted)
RNA Concentration:	377 ng/μl	Result Flagging Color:	
rRNA Ratio [28s / 18s]:	1.7	Result Flagging Label:	RIN: 6.40

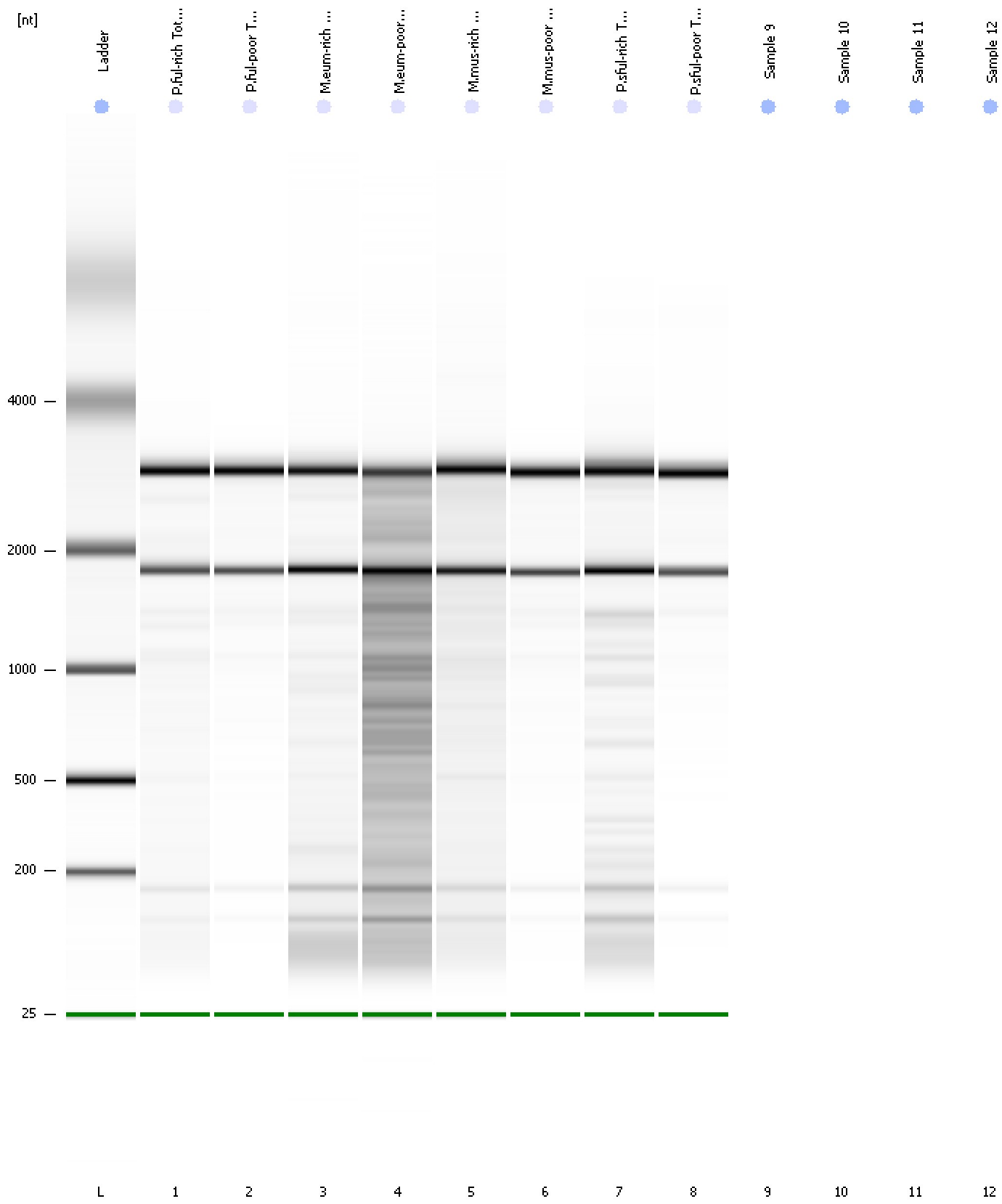
Fragment table for sample 8 : P.sful-poor Total RNA

Name	Start Size [nt]	End Size [nt]	Area	% of total Area
18S	1,676	1,990	139.3	24.5
28S	2,739	3,410	237.9	41.8

Assay Class: Eukaryote Total RNA Nano
Data Path: C:\...ents and Settings\Bioanalyzer\2013-09-26\2013-09-26_004.xad

Created: 9/26/2013 4:40:35 PM
Modified: 9/26/2013 5:12:28 PM

Gel Image



Assay Class: Eukaryote Total RNA Nano
Data Path: C:\...ents and Settings\Bioanalyzer\2013-09-26\2013-09-26_004.xad

Created: 9/26/2013 4:40:35 PM
Modified: 9/26/2013 5:12:28 PM

Invalid Samples

Sample 9 has not been run, no results available.

Sample 10 has not been run, no results available.

Sample 11 has not been run, no results available.

Sample 12 has not been run, no results available.