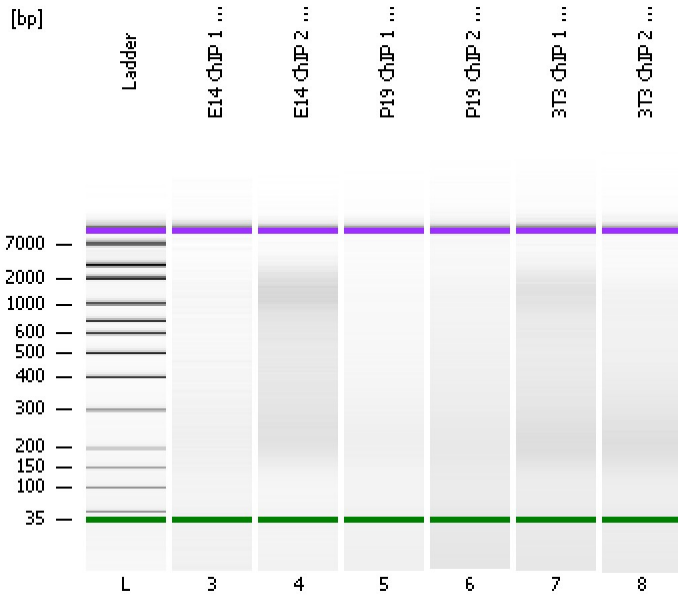


Assay Class: High Sensitivity DNA Assay
Data Path: C:\...d Settings\Bioanalyzer\2013-09-27\2013-09-27_002_ChIP-1.xad

Created: 9/27/2013 11:19:42 AM
Modified: 10/1/2013 10:24:56 AM

Electrophoresis File Run Summary



Instrument Information:

Instrument Name: DE13701086 Firmware: C.01.069
Serial#: DE13701086 Type: G2938B

Assay Information:

Assay Origin Path: C:\Program Files\Agilent\2100 bioanalyzer\2100 expert\assays\dsDNA\High Sensitivity DNA.xsy

Assay Class: High Sensitivity DNA Assay

Version: 1.03

Assay Comments: Copyright © 2003-2010 Agilent Technologies

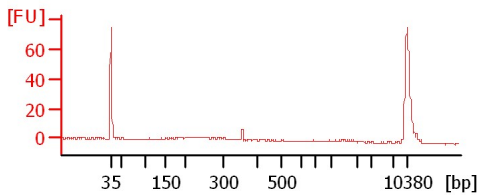
Chip Information:

Chip Lot #:

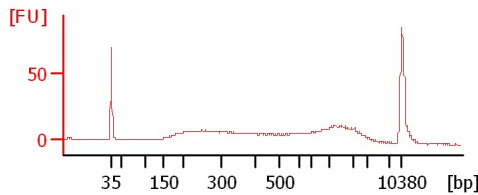
Reagent Kit Lot #:

Chip Comments:

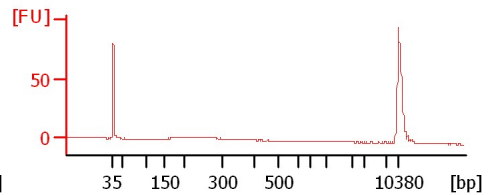
E14 ChIP 1 Concentrated



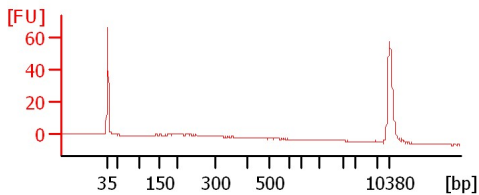
E14 ChIP 2 Concentrated



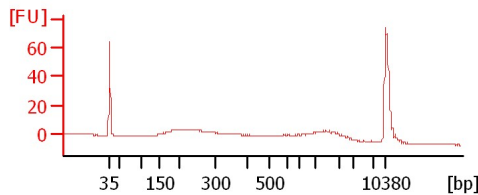
P19 ChIP 1 Concentrated



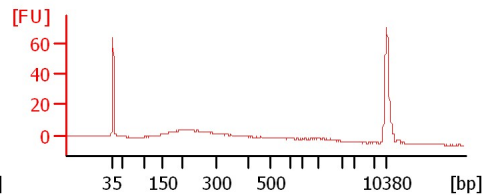
P19 ChIP 2 Concentrated



3T3 ChIP 1 Concentrated



3T3 ChIP 2 Concentrated



Assay Class: High Sensitivity DNA Assay
 Data Path: C:\...d Settings\Bioanalyzer\2013-09-27\2013-09-27_002_ChIP-1.xad

Created: 9/27/2013 11:19:42 AM
 Modified: 10/1/2013 10:24:56 AM

Electrophoresis File Run Summary (Chip Summary)

Sample Name	Sample Comment	Rest. Digest	Status	Observation	Result Label	Result Color
E14 ChIP 1 Concentrated		<input type="checkbox"/>				
E14 ChIP 2 Concentrated		<input type="checkbox"/>				
P19 ChIP 1 Concentrated		<input type="checkbox"/>				
P19 ChIP 2 Concentrated		<input type="checkbox"/>				
3T3 ChIP 1 Concentrated		<input type="checkbox"/>				
3T3 ChIP 2 Concentrated		<input type="checkbox"/>				
Ladder		<input type="checkbox"/>				

Chip Lot #

Reagent Kit Lot #

Chip Comments :

Assay Class: High Sensitivity DNA Assay
Data Path: C:\...d Settings\Bioanalyzer\2013-09-27\2013-09-27_002_ChIP-1.xad

Created: 9/27/2013 11:19:42 AM
Modified: 10/1/2013 10:24:56 AM

Electrophoresis Assay Details

General Analysis Settings

Number of Available Sample and Ladder Wells (Max.) : 12
Minimum Visible Range [s] : 32
Maximum Visible Range [s] : 138
Start Analysis Time Range [s] : 33
End Analysis Time Range [s] : 137.5
Ladder Concentration [pg/μl] : 1950
Uses Standard Area for Ladder Fragments
Lower Marker Concentration [pg/μl] : 125
Upper Marker Concentration [pg/μl] : 75
Used Upper Marker for Quantitation
Standard Curve Fit is Point to Point
Show Data Aligned to Lower and Upper Marker

Integrator Settings

Integration Start Time [s] : 33.05
Integration End Time [s] : 137
Slope Threshold : 0.8
Height Threshold [FU] : 5
Area Threshold : 0.1
Width Threshold [s] : 0.6
Baseline Plateau [s] : 0.5

Filter Settings

Filter Width [s] : 0.5
Polynomial Order : 4

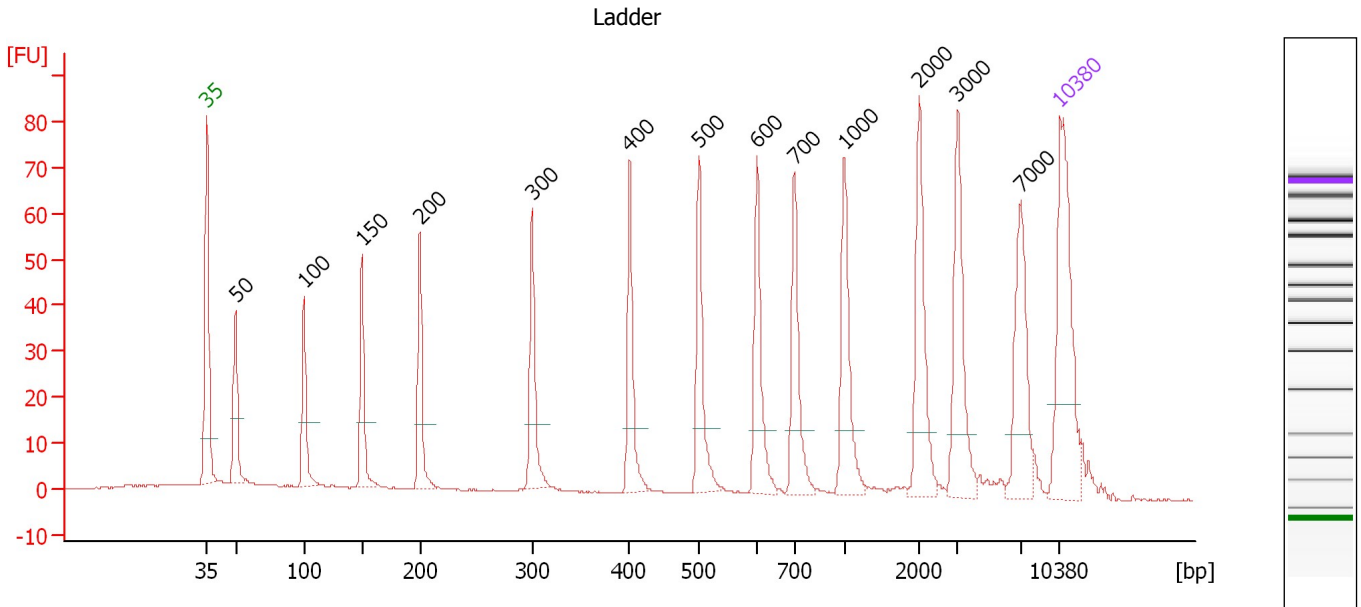
Ladder

Ladder Peak	Size	Area
1	35	160
2	50	210
3	100	208
4	150	221
5	200	242
6	300	270
7	400	305
8	500	306
9	600	336
10	700	321
11	1000	366
12	2000	413
13	3000	411
14	7000	400
15	10380	214

Assay Class: High Sensitivity DNA Assay
 Data Path: C:\...d Settings\Bioanalyzer\2013-09-27\2013-09-27_002_ChIP-1.xad

Created: 9/27/2013 11:19:42 AM
 Modified: 10/1/2013 10:24:56 AM

Electropherogram Summary



Overall Results for Ladder

Noise: 0.1

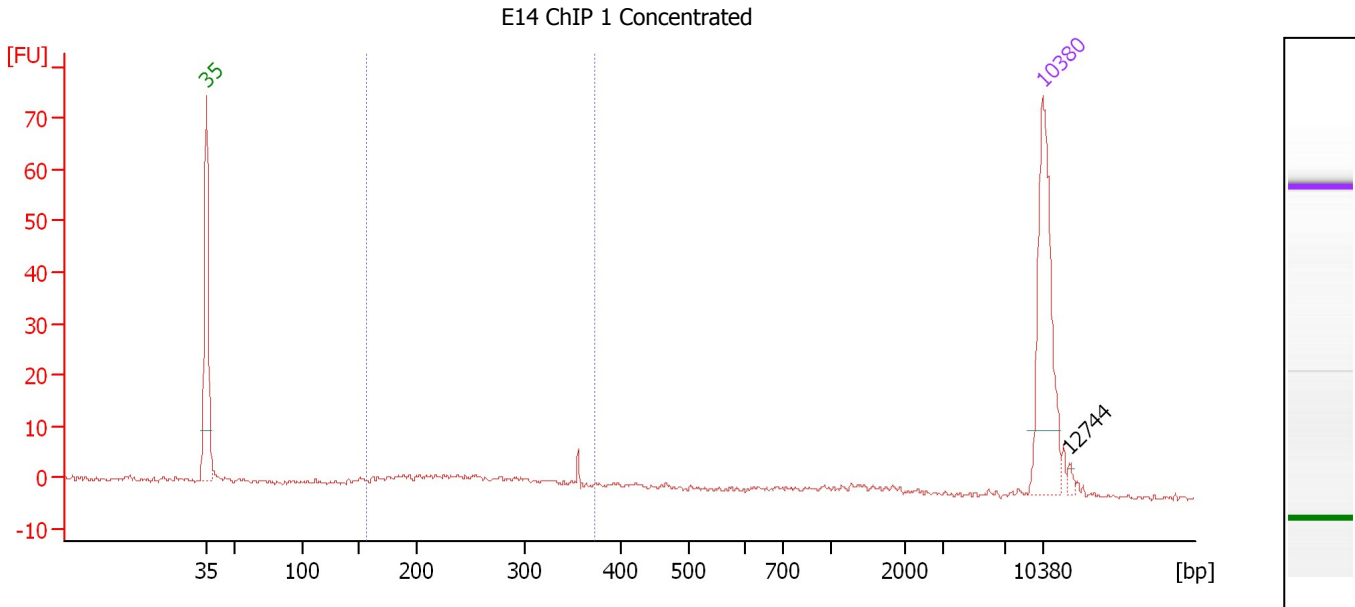
Peak table for Ladder

Peak	Size [bp]	Conc. [pg/μl]	Molarity [pmol/l]	Observations
1	35	125.00	5,411.3	Lower Marker
2	50	150.00	4,545.5	Ladder Peak
3	100	150.00	2,272.7	Ladder Peak
4	150	150.00	1,515.2	Ladder Peak
5	200	150.00	1,136.4	Ladder Peak
6	300	150.00	757.6	Ladder Peak
7	400	150.00	568.2	Ladder Peak
8	500	150.00	454.5	Ladder Peak
9	600	150.00	378.8	Ladder Peak
10	700	150.00	324.7	Ladder Peak
11	1,000	150.00	227.3	Ladder Peak
12	2,000	150.00	113.6	Ladder Peak
13	3,000	150.00	75.8	Ladder Peak
14	7,000	150.00	32.5	Ladder Peak
15	10,380	75.00	10.9	Upper Marker

Assay Class: High Sensitivity DNA Assay
 Data Path: C:\...d Settings\Bioanalyzer\2013-09-27\2013-09-27_002_ChIP-1.xad

Created: 9/27/2013 11:19:42 AM
 Modified: 10/1/2013 10:24:56 AM

Electropherogram Summary Continued ...



Overall Results for sample 3 : E14 ChIP 1 Concentrated

Number of peaks found: 1 Corr. Area 1: 44.5
 Noise: 0.4

Peak table for sample 3 : E14 ChIP 1 Concentrated

Peak	Size [bp]	Conc. [pg/μl]	Molarity [pmol/l]	Observations
1	35	125.00	5,411.3	Lower Marker
2	10,380	75.00	10.9	Upper Marker
3	12,744	0.00	0.0	

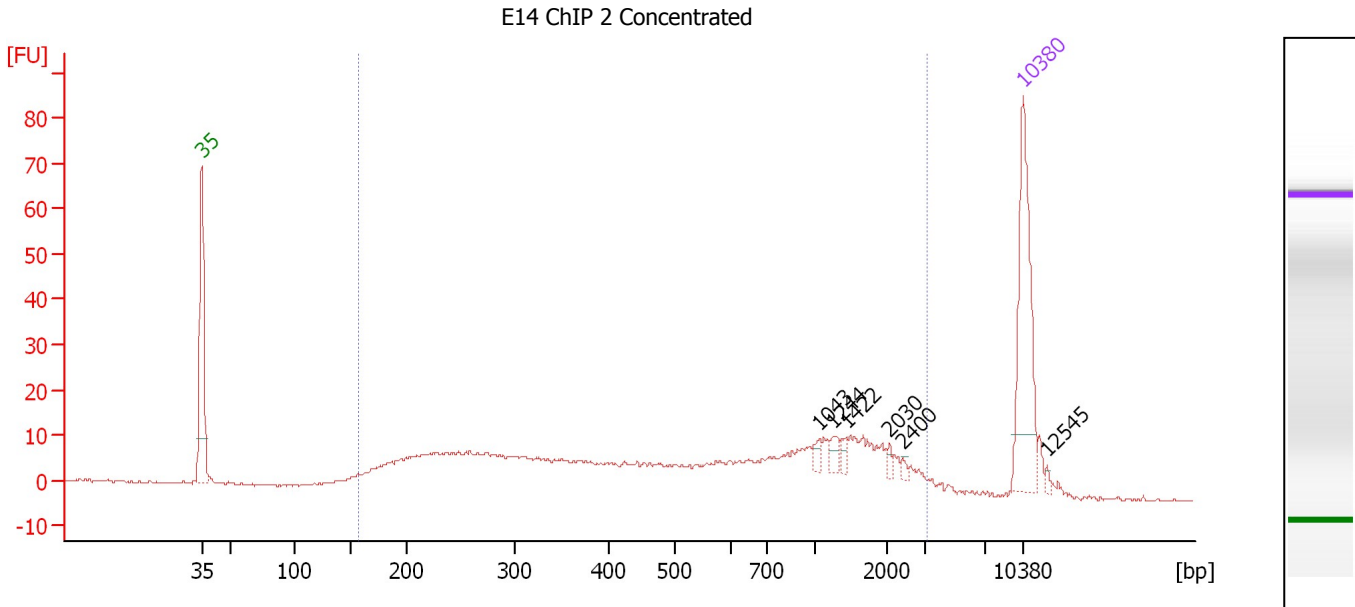
Region table for sample 3 : E14 ChIP 1 Concentrated

From [bp]	To [bp]	Average Size [bp]	Molarity [pmol/l]	Conc. [pg/μl]	Corr. Area	% of Total	Size distribution in CV [%]	Color
158	372	259	389.4	62.03	44.5	47	22.3	Blue

Assay Class: High Sensitivity DNA Assay
 Data Path: C:\...d Settings\Bioanalyzer\2013-09-27\2013-09-27_002_ChIP-1.xad

Created: 9/27/2013 11:19:42 AM
 Modified: 10/1/2013 10:24:56 AM

Electropherogram Summary Continued ...



Overall Results for sample 4 : E14 ChIP 2 Concentrated

Number of peaks found: 6 Corr. Area 1: 453.8
 Noise: 0.3

Peak table for sample 4 : E14 ChIP 2 Concentrated

Peak	Size [bp]	Conc. [pg/μl]	Molarity [pmol/l]	Observations
1	35	125.00	5,411.3	Lower Marker
2	1,043	5.09	7.4	
3	1,244	7.38	9.0	
4	1,422	4.45	4.7	
5	2,030	3.47	2.6	
6	2,400	2.12	1.3	
7	10,380	75.00	10.9	Upper Marker
8	12,545	0.00	0.0	

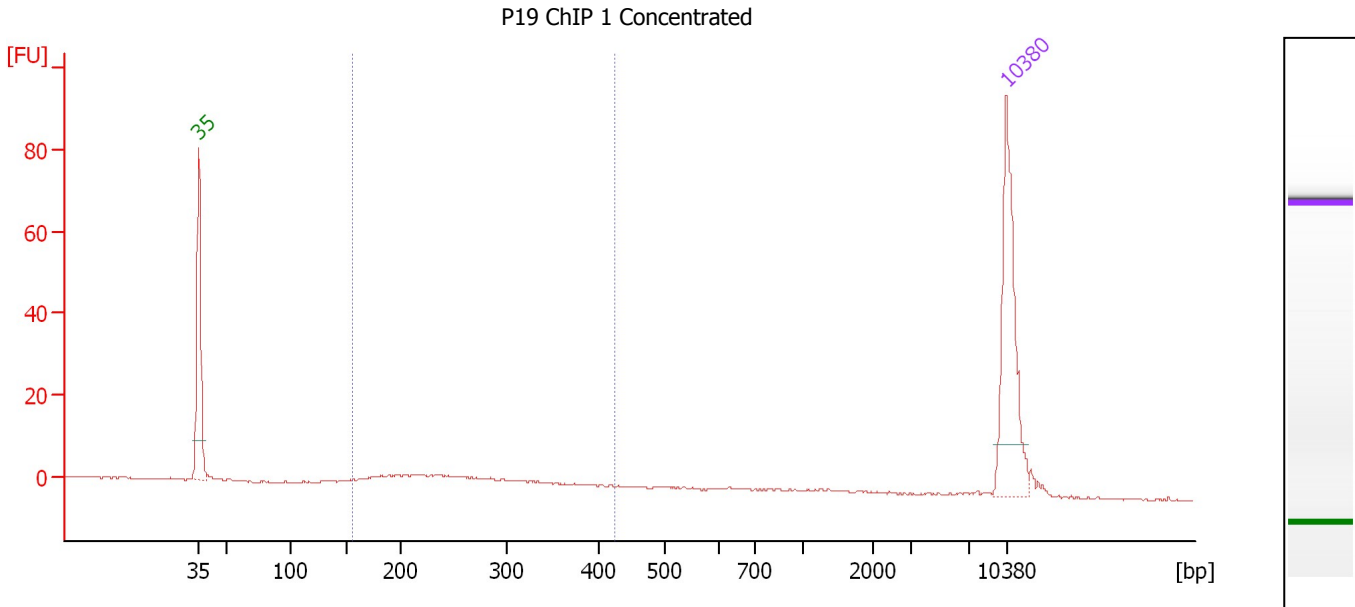
Region table for sample 4 : E14 ChIP 2 Concentrated

From [bp]	To [bp]	Average Size [bp]	Molarity [pmol/l]	Conc. [pg/μl]	Corr. Area	% of Total	Size distribution in CV [%]	Color
157	3,171	791	2,226.3	540.66	453.8	93	82.5	Blue

Assay Class: High Sensitivity DNA Assay
 Data Path: C:\...d Settings\Bioanalyzer\2013-09-27\2013-09-27_002_ChIP-1.xad

Created: 9/27/2013 11:19:42 AM
 Modified: 10/1/2013 10:24:56 AM

Electropherogram Summary Continued ...



Overall Results for sample 5 : P19 ChIP 1 Concentrated

Number of peaks found: 0 Corr. Area 1: 48.6
 Noise: 0.2

Peak table for sample 5 : P19 ChIP 1 Concentrated

Peak	Size [bp]	Conc. [pg/μl]	Molarity [pmol/l]	Observations
1	35	125.00	5,411.3	Lower Marker
2	10,380	75.00	10.9	Upper Marker

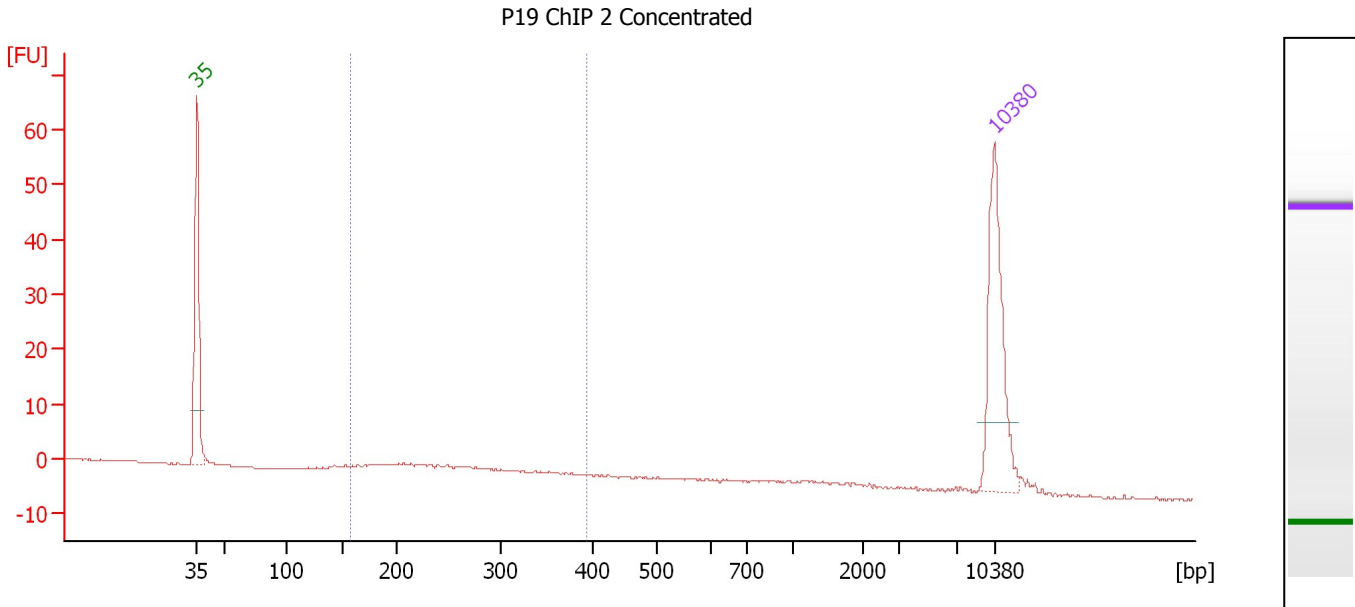
Region table for sample 5 : P19 ChIP 1 Concentrated

From [bp]	To [bp]	Average Size [bp]	Molarity [pmol/l]	Conc. [pg/μl]	Corr. Area	% of Total	Size distribution in CV [%]	Color
156	425	261	358.5	57.02	48.6	67	24.5	Blue

Assay Class: High Sensitivity DNA Assay
 Data Path: C:\...d Settings\Bioanalyzer\2013-09-27\2013-09-27_002_ChIP-1.xad

Created: 9/27/2013 11:19:42 AM
 Modified: 10/1/2013 10:24:56 AM

Electropherogram Summary Continued ...



Overall Results for sample 6 : P19 ChIP 2 Concentrated

Number of peaks found: 0 Corr. Area 1: 29.8
 Noise: 0.2

Peak table for sample 6 : P19 ChIP 2 Concentrated

Peak	Size [bp]	Conc. [pg/μl]	Molarity [pmol/l]	Observations
1	35	125.00	5,411.3	Lower Marker
2	10,380	75.00	10.9	Upper Marker

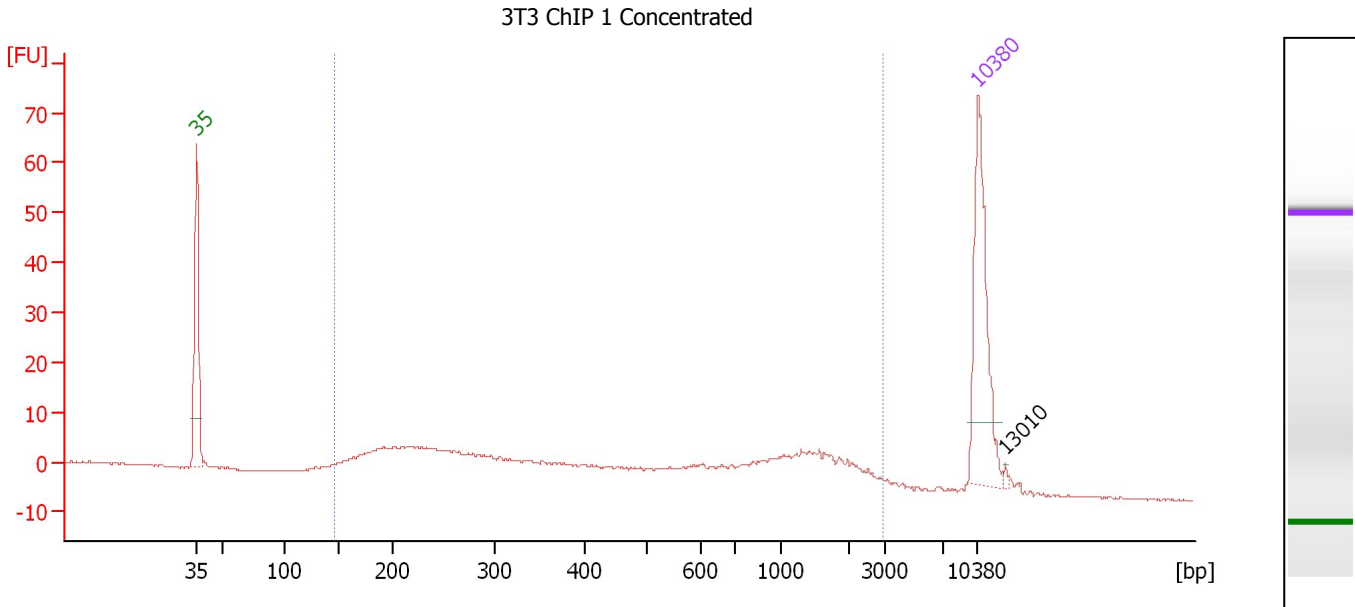
Region table for sample 6 : P19 ChIP 2 Concentrated

From [bp]	To [bp]	Average Size [bp]	Molarity [pmol/l]	Conc. [pg/μl]	Corr. Area	% of Total	Size distribution in CV [%]	Color
158	394	261	292.8	46.67	29.8	55	23.6	Blue

Assay Class: High Sensitivity DNA Assay
 Data Path: C:\...d Settings\Bioanalyzer\2013-09-27\2013-09-27_002_ChIP-1.xad

Created: 9/27/2013 11:19:42 AM
 Modified: 10/1/2013 10:24:56 AM

Electropherogram Summary Continued ...



Overall Results for sample 7 : 3T3 ChIP 1 Concentrated

Number of peaks found: 1 Corr. Area 1: 253.6
 Noise: 0.1

Peak table for sample 7 : 3T3 ChIP 1 Concentrated

Peak	Size [bp]	Conc. [pg/μl]	Molarity [pmol/l]	Observations
1	35	125.00	5,411.3	Lower Marker
2	10,380	75.00	10.9	Upper Marker
3	13,010	0.00	0.0	

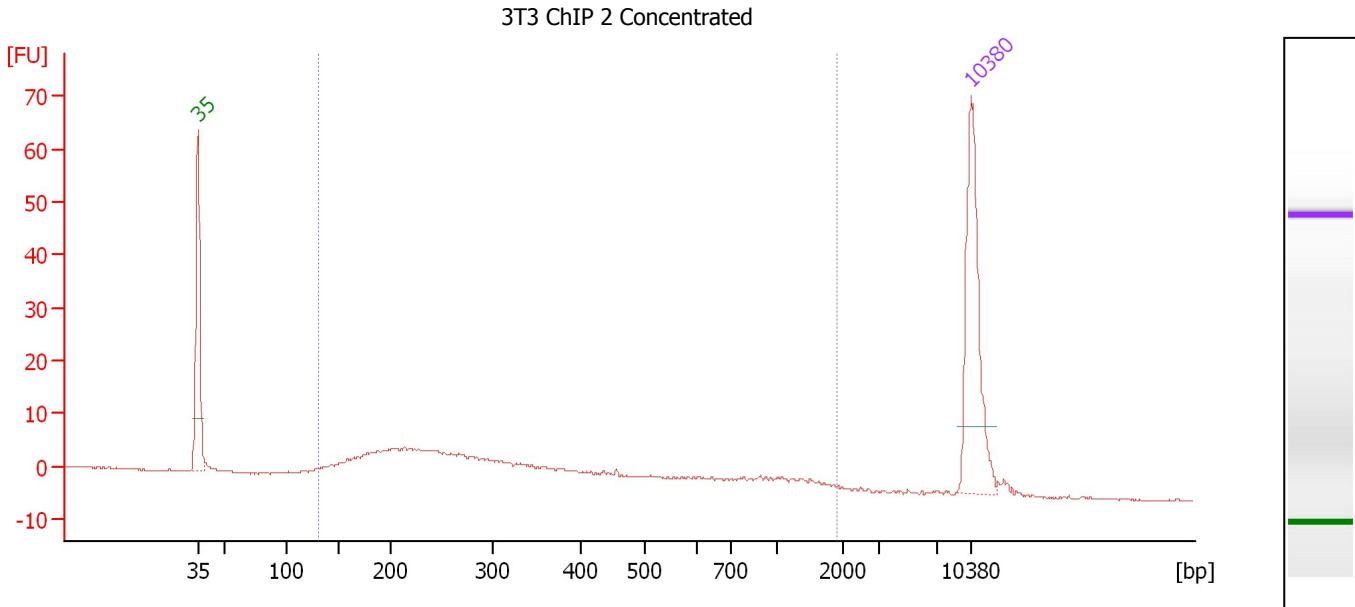
Region table for sample 7 : 3T3 ChIP 1 Concentrated

From [bp]	To [bp]	Average Size [bp]	Molarity [pmol/l]	Conc. [pg/μl]	Corr. Area	% of Total	Size distribution in CV [%]	Color
146	2,983	739	1,443.3	312.70	253.6	94	85.9	Blue

Assay Class: High Sensitivity DNA Assay
 Data Path: C:\...d Settings\Bioanalyzer\2013-09-27\2013-09-27_002_ChIP-1.xad

Created: 9/27/2013 11:19:42 AM
 Modified: 10/1/2013 10:24:56 AM

Electropherogram Summary Continued ...



Overall Results for sample 8 : 3T3 ChIP 2 Concentrated

Number of peaks found: 0 Corr. Area 1: 171.8
 Noise: 0.1

Peak table for sample 8 : 3T3 ChIP 2 Concentrated

Peak	Size [bp]	Conc. [pg/μl]	Molarity [pmol/l]	Observations
1	35	125.00	5,411.3	Lower Marker
2	10,380	75.00	10.9	Upper Marker

Region table for sample 8 : 3T3 ChIP 2 Concentrated

From [bp]	To [bp]	Average Size [bp]	Molarity [pmol/l]	Conc. [pg/μl]	Corr. Area	% of Total	Size distribution in CV [%]	Color
132	1,885	408	1,360.4	234.14	171.8	95	78.0	Blue

Assay Class: High Sensitivity DNA Assay
Data Path: C:\...d Settings\Bioanalyzer\2013-09-27\2013-09-27_002_ChIP-1.xad

Created: 9/27/2013 11:19:42 AM
Modified: 10/1/2013 10:24:56 AM

Gel Image

