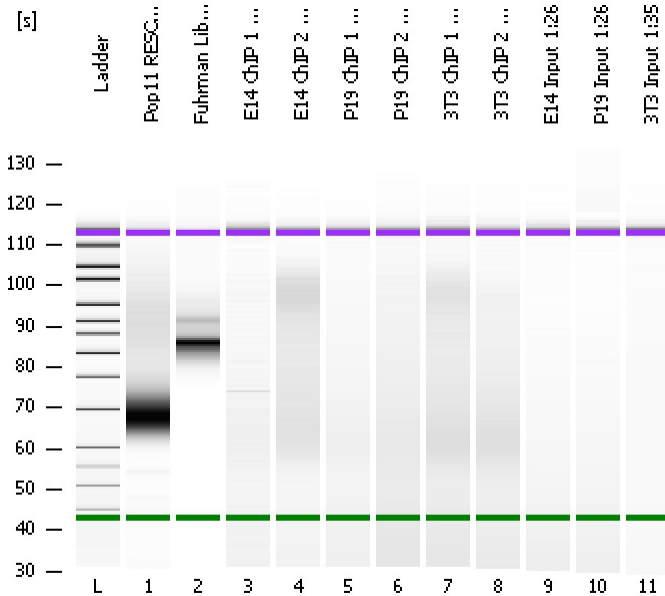


Assay Class: High Sensitivity DNA Assay  
Data Path: C:\...ents and Settings\Bioanalyzer\2013-09-27\2013-09-27\_002.xad

Created: 9/27/2013 11:19:42 AM  
Modified: 9/27/2013 12:06:52 PM

### Electrophoresis File Run Summary



#### Instrument Information:

Instrument Name: DE13701086      Firmware: C.01.069  
Serial#: DE13701086      Type: G2938B

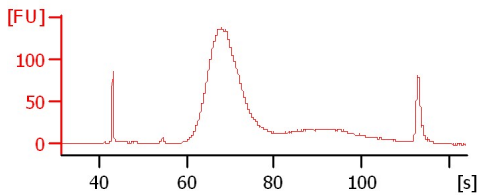
#### Assay Information:

Assay Origin Path: C:\Program Files\Agilent\2100 bioanalyzer\2100 expert\assays\dsDNA\High Sensitivity DNA.xsy  
Assay Class: High Sensitivity DNA Assay  
Version: 1.03  
Assay Comments: Copyright © 2003-2010 Agilent Technologies

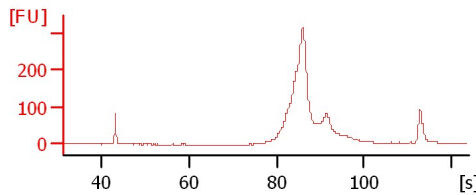
#### Chip Information:

Chip Lot #:   
Reagent Kit Lot #:   
Chip Comments:

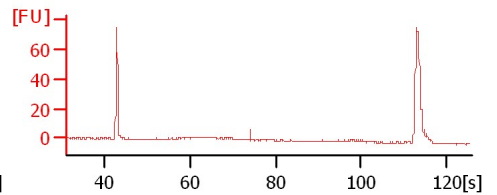
Pop11 RESCAN LIB 1:7



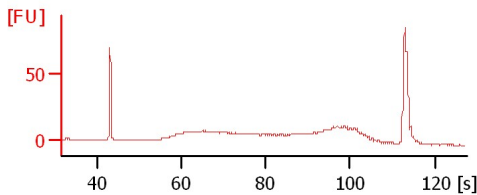
Fuhrman Lib\_3



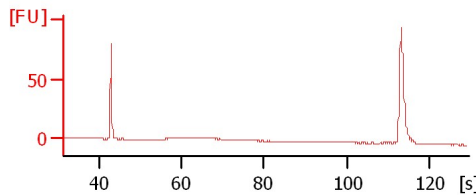
E14 ChIP 1 Concentrated



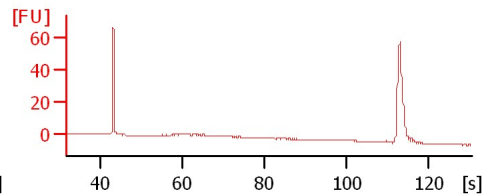
E14 ChIP 2 Concentrated



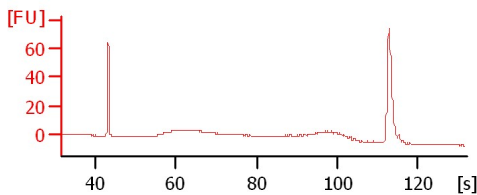
P19 ChIP 1 Concentrated



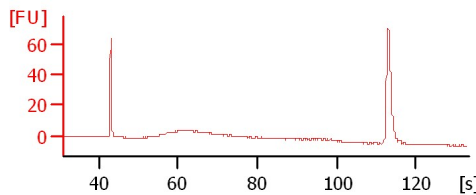
P19 ChIP 2 Concentrated



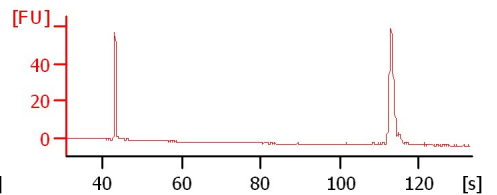
3T3 ChIP 1 Concentrated



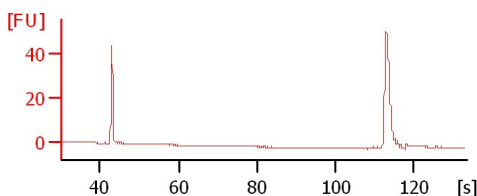
3T3 ChIP 2 Concentrated



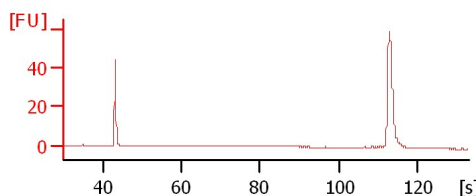
E14 Input 1:26



P19 Input 1:26



3T3 Input 1:35



Assay Class: High Sensitivity DNA Assay  
Data Path: C:\...ents and Settings\Bioanalyzer\2013-09-27\2013-09-27\_002.xad

Created: 9/27/2013 11:19:42 AM  
Modified: 9/27/2013 12:06:52 PM

**Electrophoresis File Run Summary (Chip Summary)**

Sample Name	Sample Comment	Rest. Digest	Status	Observation	Result Label	Result Color
Pop11 RESCAN LIB 1:7		<input type="checkbox"/>	✓			
Fuhrman Lib_3		<input type="checkbox"/>	✓			
E14 ChIP 1 Concentrated		<input type="checkbox"/>	✓			
E14 ChIP 2 Concentrated		<input type="checkbox"/>	✓			
P19 ChIP 1 Concentrated		<input type="checkbox"/>	✓			
P19 ChIP 2 Concentrated		<input type="checkbox"/>	✓			
3T3 ChIP 1 Concentrated		<input type="checkbox"/>	✓			
3T3 ChIP 2 Concentrated		<input type="checkbox"/>	✓			
E14 Input 1:26		<input type="checkbox"/>	✓			
P19 Input 1:26		<input type="checkbox"/>	✓			
3T3 Input 1:35		<input type="checkbox"/>	✓			
Ladder		<input type="checkbox"/>	✓			

**Chip Lot #**

**Reagent Kit Lot #**

**Chip Comments :**

Assay Class: High Sensitivity DNA Assay  
Data Path: C:\...ents and Settings\Bioanalyzer\2013-09-27\2013-09-27\_002.xad

Created: 9/27/2013 11:19:42 AM  
Modified: 9/27/2013 12:06:52 PM

**Electrophoresis Assay Details**

**General Analysis Settings**

Number of Available Sample and Ladder Wells (Max.) : 12  
Minimum Visible Range [s] : 32  
Maximum Visible Range [s] : 138  
Start Analysis Time Range [s] : 33  
End Analysis Time Range [s] : 137.5  
Ladder Concentration [pg/μl] : 1950  
Uses Standard Area for Ladder Fragments  
Lower Marker Concentration [pg/μl] : 125  
Upper Marker Concentration [pg/μl] : 75  
Used Upper Marker for Quantitation  
Standard Curve Fit is Point to Point  
Show Data Aligned to Lower and Upper Marker

**Integrator Settings**

Integration Start Time [s] : 33.05  
Integration End Time [s] : 137  
Slope Threshold : 0.8  
Height Threshold [FU] : 5  
Area Threshold : 0.1  
Width Threshold [s] : 0.6  
Baseline Plateau [s] : 0.5

**Filter Settings**

Filter Width [s] : 0.5  
Polynomial Order : 4

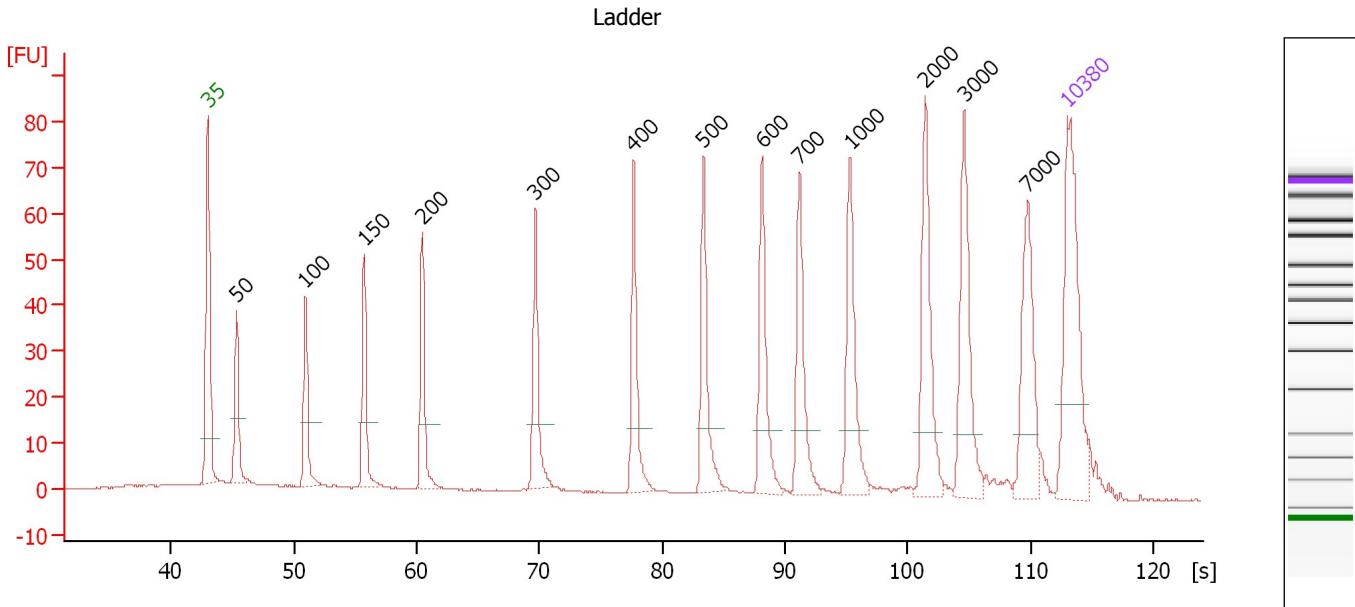
**Ladder**

Ladder Peak	Size	Area
1	35	160
2	50	210
3	100	208
4	150	221
5	200	242
6	300	270
7	400	305
8	500	306
9	600	336
10	700	321
11	1000	366
12	2000	413
13	3000	411
14	7000	400
15	10380	214

Assay Class: High Sensitivity DNA Assay  
 Data Path: C:\...ents and Settings\Bioanalyzer\2013-09-27\2013-09-27\_002.xad

Created: 9/27/2013 11:19:42 AM  
 Modified: 9/27/2013 12:06:52 PM

**Electropherogram Summary**



**Overall Results for Ladder**

Noise: 0.1

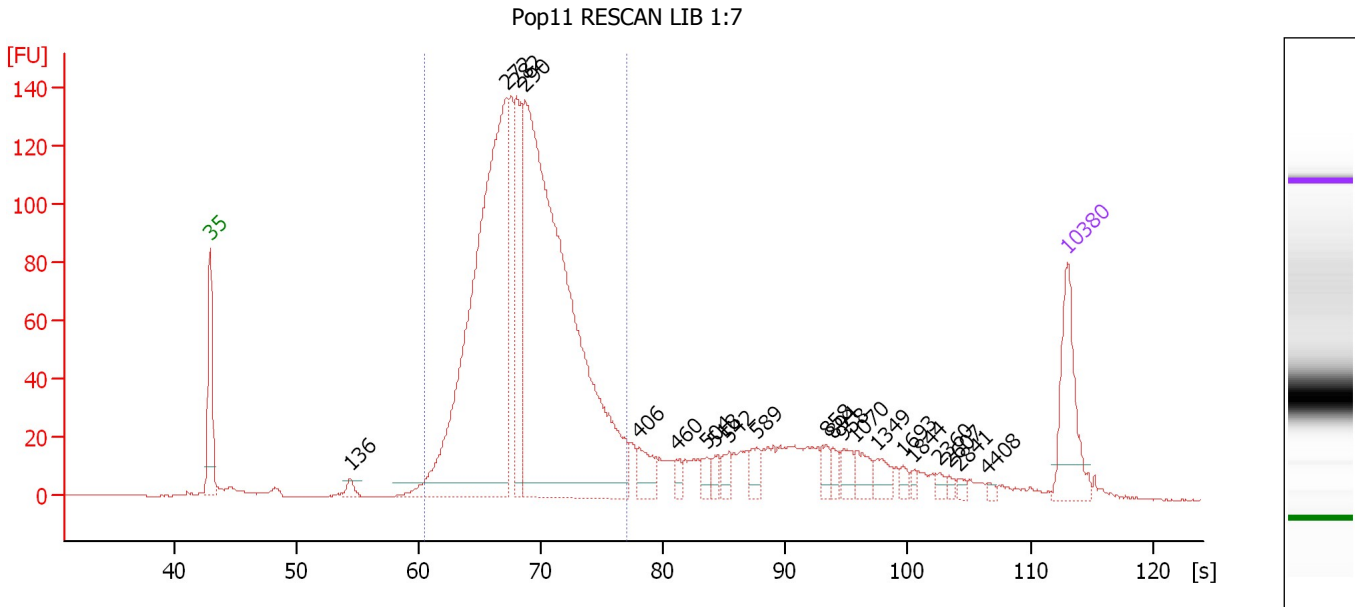
**Peak table for Ladder**

Peak	Size [bp]	Conc. [pg/μl]	Molarity [pmol/l]	Observations
1	35	125.00	5,411.3	Lower Marker
2	50	150.00	4,545.5	Ladder Peak
3	100	150.00	2,272.7	Ladder Peak
4	150	150.00	1,515.2	Ladder Peak
5	200	150.00	1,136.4	Ladder Peak
6	300	150.00	757.6	Ladder Peak
7	400	150.00	568.2	Ladder Peak
8	500	150.00	454.5	Ladder Peak
9	600	150.00	378.8	Ladder Peak
10	700	150.00	324.7	Ladder Peak
11	1,000	150.00	227.3	Ladder Peak
12	2,000	150.00	113.6	Ladder Peak
13	3,000	150.00	75.8	Ladder Peak
14	7,000	150.00	32.5	Ladder Peak
15	10,380	75.00	10.9	Upper Marker

Assay Class: High Sensitivity DNA Assay  
 Data Path: C:\...ents and Settings\Bioanalyzer\2013-09-27\2013-09-27\_002.xad

Created: 9/27/2013 11:19:42 AM  
 Modified: 9/27/2013 12:06:52 PM

**Electropherogram Summary Continued ...**



**Overall Results for sample 1 : Pop11 RESCAN LIB 1:7**

Number of peaks found: 21                      Corr. Area 1: 1,805.7  
 Noise: 0.2

**Peak table for sample 1 : Pop11 RESCAN LIB 1:7**

Peak	Size [bp]	Conc. [pg/μl]	Molarity [pmol/l]	Observations
1	35	125.00	5,411.3	Lower Marker
2	136	12.67	141.0	
3	272	856.34	4,765.8	
4	282	180.47	970.3	
5	290	1,098.65	5,741.6	
6	406	36.47	136.2	
7	460	11.75	38.7	
8	504	14.26	42.9	
9	518	12.13	35.5	
10	542	16.47	46.0	
11	589	18.21	46.8	
12	858	14.71	26.0	
13	894	12.91	21.9	
14	958	18.81	29.8	
15	1,070	22.04	31.2	
16	1,349	18.73	21.0	
17	1,693	7.47	6.7	
18	1,844	4.99	4.1	
19	2,360	6.02	3.9	
20	2,607	3.72	2.2	
21	2,841	4.62	2.5	
22	4,408	3.63	1.2	
23	10,380	75.00	10.9	Upper Marker

Assay Class: High Sensitivity DNA Assay  
Data Path: C:\...ents and Settings\Bioanalyzer\2013-09-27\2013-09-27\_002.xad

Created: 9/27/2013 11:19:42 AM  
Modified: 9/27/2013 12:06:52 PM

**Electropherogram Summary Continued ...**

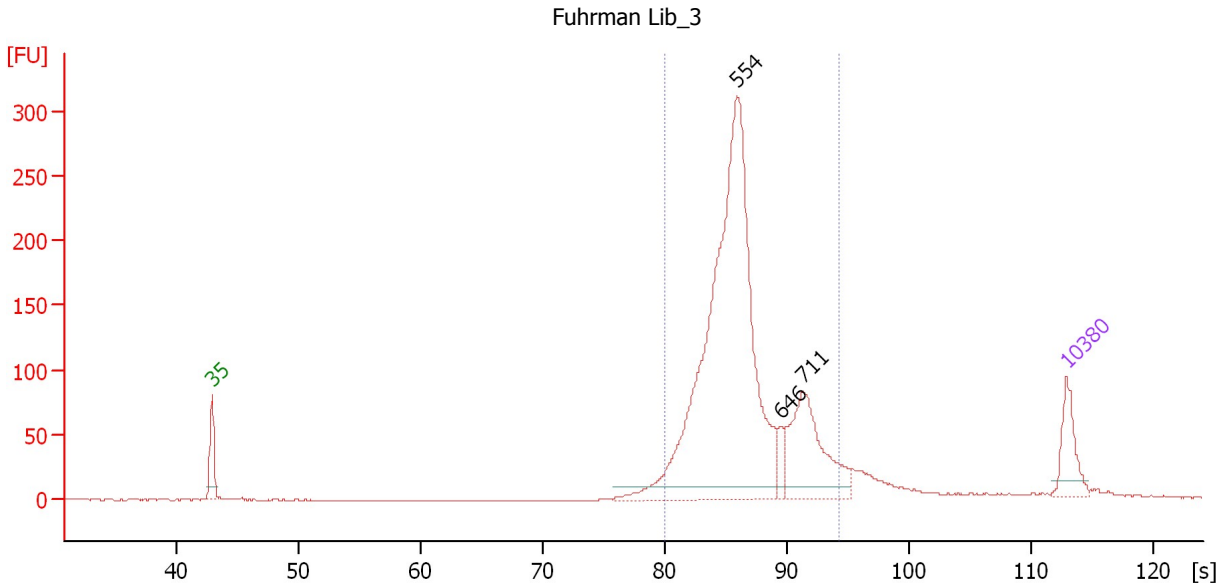
... Region table for sample 1 : Pop11 RESCAN LIB 1:7

From [s]	To [s]	Average Size [bp]	Molarity [pmol/l]	Conc. [pg/μl]	Corr. Area % of Total	Size distribution in CV [%]	Color	
60.50	77.03	290	11,708.4	2,202.14	1,805.7	77	13.4	■

Assay Class: High Sensitivity DNA Assay  
 Data Path: C:\...ents and Settings\Bioanalyzer\2013-09-27\2013-09-27\_002.xad

Created: 9/27/2013 11:19:42 AM  
 Modified: 9/27/2013 12:06:52 PM

**Electropherogram Summary Continued ...**



**Setpoint Deviations for sample 2 : Fuhrman Lib 3**

Height Threshold [FU] : 10

**Overall Results for sample 2 : Fuhrman Lib 3**

Number of peaks found: 3                      Corr. Area 1: 1,739.4  
 Noise: 0.2

**Peak table for sample 2 : Fuhrman Lib 3**

Peak	Size [bp]	Conc. [pg/μl]	Molarity [pmol/l]	Observations
1	35	125.00	5,411.3	Lower Marker
2	554	1,417.91	3,877.6	
3	646	36.89	86.5	
4	711	281.65	600.0	
5	10,380	75.00	10.9	Upper Marker

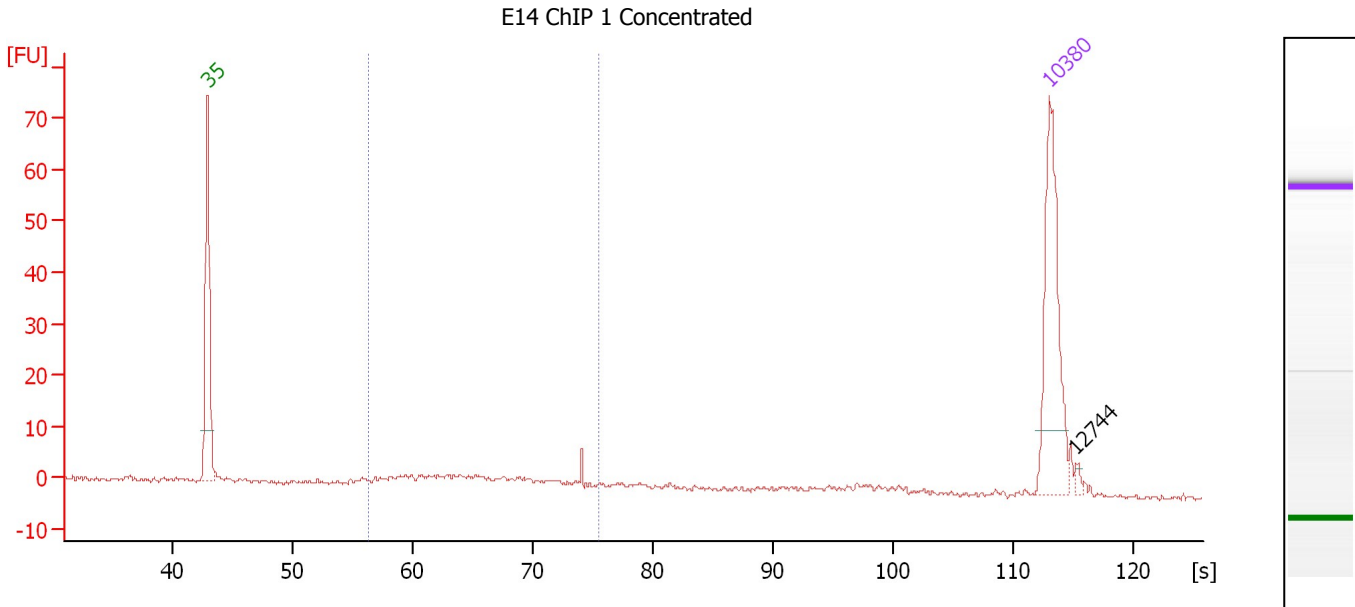
**Region table for sample 2 : Fuhrman Lib 3**

From [s]	To [s]	Average Size [bp]	Molarity [pmol/l]	Conc. [pg/μl]	Corr. Area % of Total	Size distribution in CV [%]	Color
80.11	94.37	576	4,547.6	1,685.83	1,739.4 90	15.8	Blue

Assay Class: High Sensitivity DNA Assay  
 Data Path: C:\...ents and Settings\Bioanalyzer\2013-09-27\2013-09-27\_002.xad

Created: 9/27/2013 11:19:42 AM  
 Modified: 9/27/2013 12:06:52 PM

**Electropherogram Summary Continued ...**



**Overall Results for sample 3 : E14 ChIP 1 Concentrated**

Number of peaks found: 1                      Corr. Area 1: 44.5  
 Noise: 0.4

**Peak table for sample 3 : E14 ChIP 1 Concentrated**

Peak	Size [bp]	Conc. [pg/μl]	Molarity [pmol/l]	Observations
1	35	125.00	5,411.3	Lower Marker
2	10,380	75.00	10.9	Upper Marker
3	12,744	0.00	0.0	

**Region table for sample 3 : E14 ChIP 1 Concentrated**

From [s]	To [s]	Average Size [bp]	Molarity [pmol/l]	Conc. [pg/μl]	Corr. Area % of Total	Size distribution in CV [%]	Color	
56.46	75.48	259	389.4	62.03	44.5	47	22.3	Blue

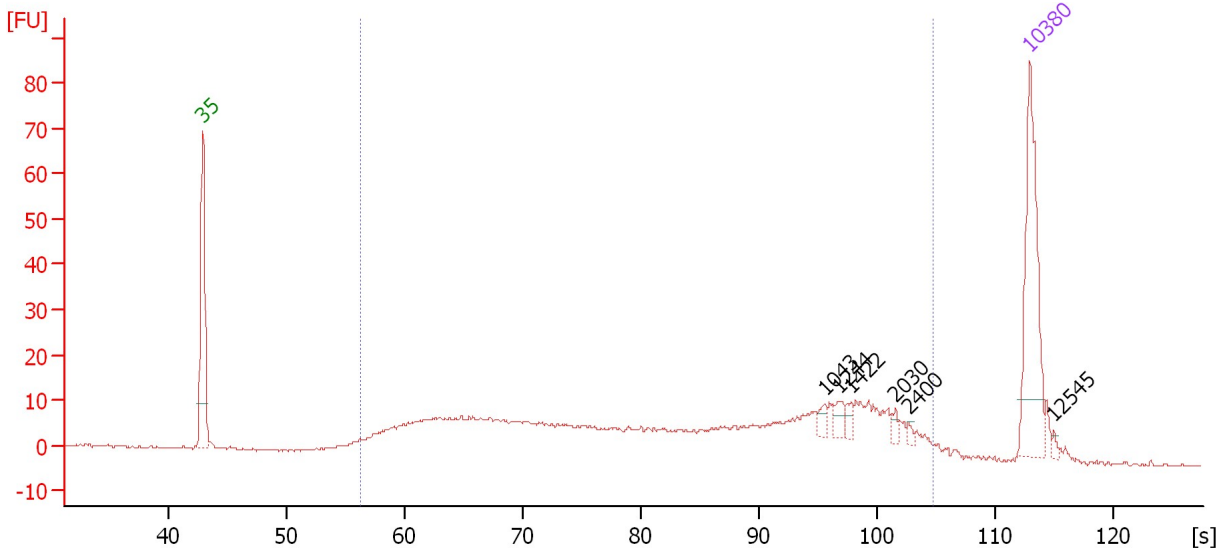


Assay Class: High Sensitivity DNA Assay  
 Data Path: C:\...ents and Settings\Bioanalyzer\2013-09-27\2013-09-27\_002.xad

Created: 9/27/2013 11:19:42 AM  
 Modified: 9/27/2013 12:06:52 PM

**Electropherogram Summary Continued ...**

E14 ChIP 2 Concentrated



**Overall Results for sample 4 : E14 ChIP 2 Concentrated**

Number of peaks found: 6                      Corr. Area 1: 453.8  
 Noise: 0.3

**Peak table for sample 4 : E14 ChIP 2 Concentrated**

Peak	Size [bp]	Conc. [pg/μl]	Molarity [pmol/l]	Observations
1	35	125.00	5,411.3	Lower Marker
2	1,043	5.09	7.4	
3	1,244	7.38	9.0	
4	1,422	4.45	4.7	
5	2,030	3.47	2.6	
6	2,400	2.12	1.3	
7	10,380	75.00	10.9	Upper Marker
8	12,545	0.00	0.0	

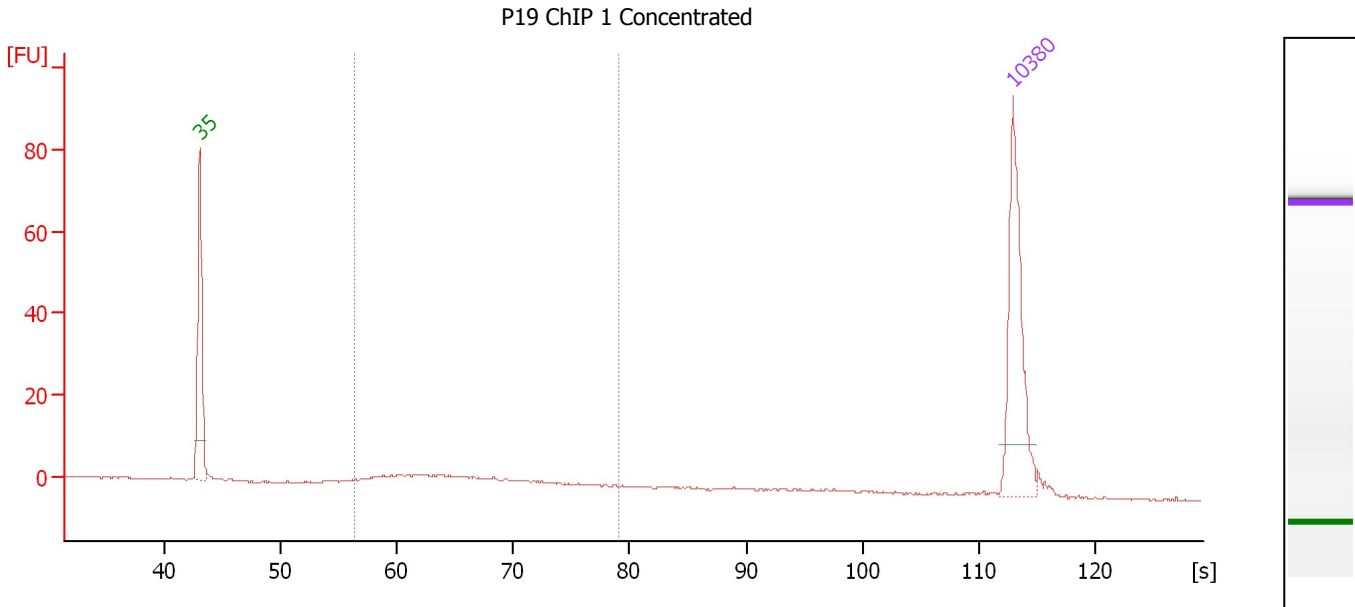
**Region table for sample 4 : E14 ChIP 2 Concentrated**

From [s]	To [s]	Average Size [bp]	Molarity [pmol/l]	Conc. [pg/μl]	Corr. Area	% of Total	Size distribution in CV [%]	Color
56.39	104.86	791	2,226.3	540.66	453.8	93	82.5	Blue

Assay Class: High Sensitivity DNA Assay  
 Data Path: C:\...ents and Settings\Bioanalyzer\2013-09-27\2013-09-27\_002.xad

Created: 9/27/2013 11:19:42 AM  
 Modified: 9/27/2013 12:06:52 PM

**Electropherogram Summary Continued ...**



**Overall Results for sample 5 : P19 ChIP 1 Concentrated**

Number of peaks found: 0                      Corr. Area 1: 48.6  
 Noise: 0.2

**Peak table for sample 5 : P19 ChIP 1 Concentrated**

Peak	Size [bp]	Conc. [pg/μl]	Molarity [pmol/l]	Observations
1	35	125.00	5,411.3	Lower Marker
2	10,380	75.00	10.9	Upper Marker

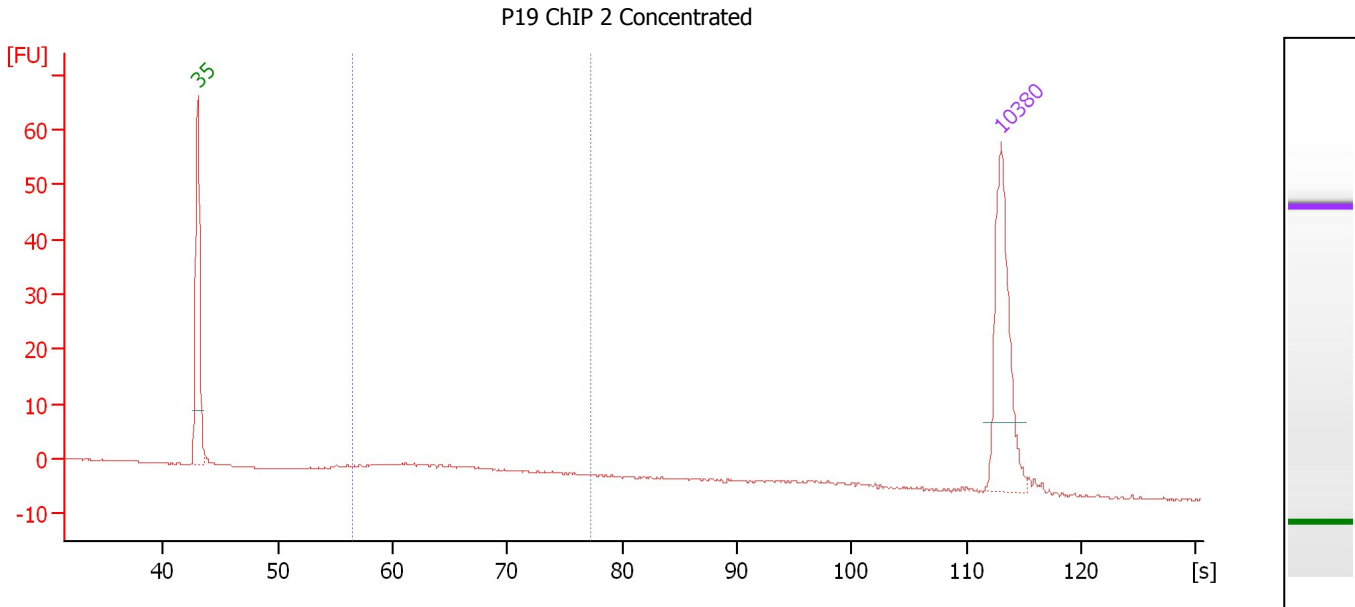
**Region table for sample 5 : P19 ChIP 1 Concentrated**

From [s]	To [s]	Average Size [bp]	Molarity [pmol/l]	Conc. [pg/μl]	Corr. Area % of Total	Size distribution in CV [%]	Color	
56.35	79.09	261	358.5	57.02	48.6	67	24.5	Blue

Assay Class: High Sensitivity DNA Assay  
 Data Path: C:\...ents and Settings\Bioanalyzer\2013-09-27\2013-09-27\_002.xad

Created: 9/27/2013 11:19:42 AM  
 Modified: 9/27/2013 12:06:52 PM

**Electropherogram Summary Continued ...**



**Overall Results for sample 6 : P19 ChIP 2 Concentrated**

Number of peaks found: 0                      Corr. Area 1: 29.8  
 Noise: 0.2

**Peak table for sample 6 : P19 ChIP 2 Concentrated**

Peak	Size [bp]	Conc. [pg/μl]	Molarity [pmol/l]	Observations
1	35	125.00	5,411.3	Lower Marker
2	10,380	75.00	10.9	Upper Marker

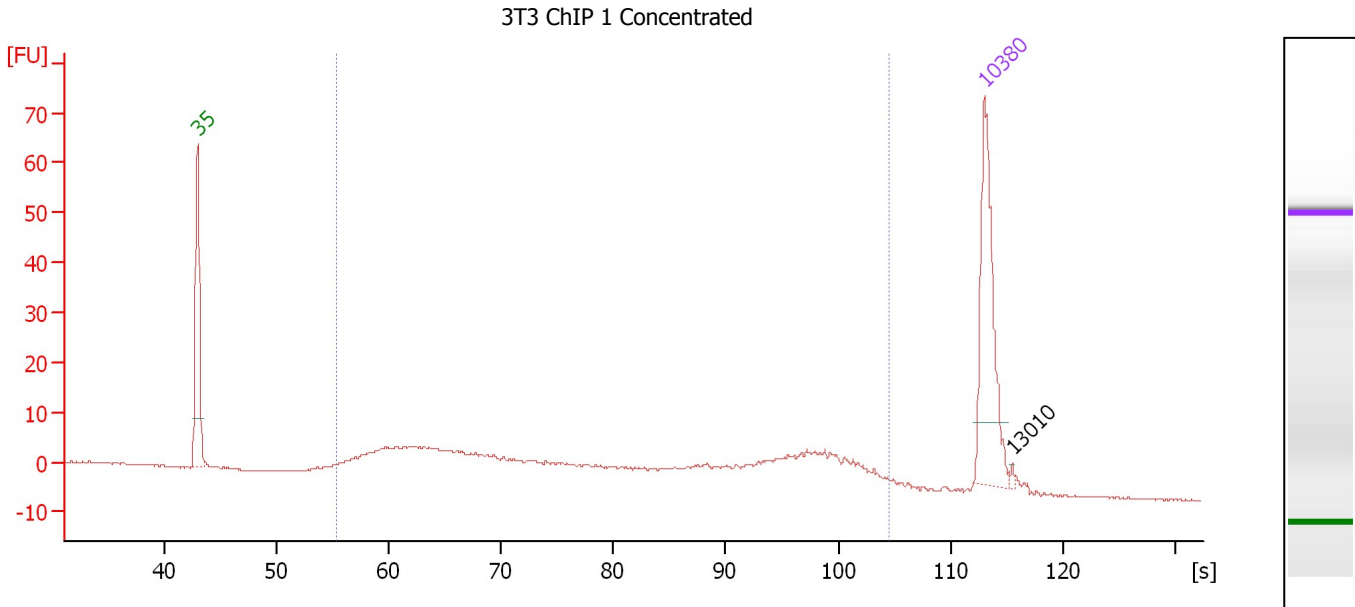
**Region table for sample 6 : P19 ChIP 2 Concentrated**

From [s]	To [s]	Average Size [bp]	Molarity [pmol/l]	Conc. [pg/μl]	Corr. Area % of Total	Size distribution in CV [%]	Color	
56.52	77.18	261	292.8	46.67	29.8	55	23.6	■

Assay Class: High Sensitivity DNA Assay  
 Data Path: C:\...ents and Settings\Bioanalyzer\2013-09-27\2013-09-27\_002.xad

Created: 9/27/2013 11:19:42 AM  
 Modified: 9/27/2013 12:06:52 PM

**Electropherogram Summary Continued ...**



**Overall Results for sample 7 : 3T3 ChIP 1 Concentrated**

Number of peaks found: 1                      Corr. Area 1: 253.6  
 Noise: 0.1

**Peak table for sample 7 : 3T3 ChIP 1 Concentrated**

Peak	Size [bp]	Conc. [pg/μl]	Molarity [pmol/l]	Observations
1	35	125.00	5,411.3	Lower Marker
2	10,380	75.00	10.9	Upper Marker
3	13,010	0.00	0.0	

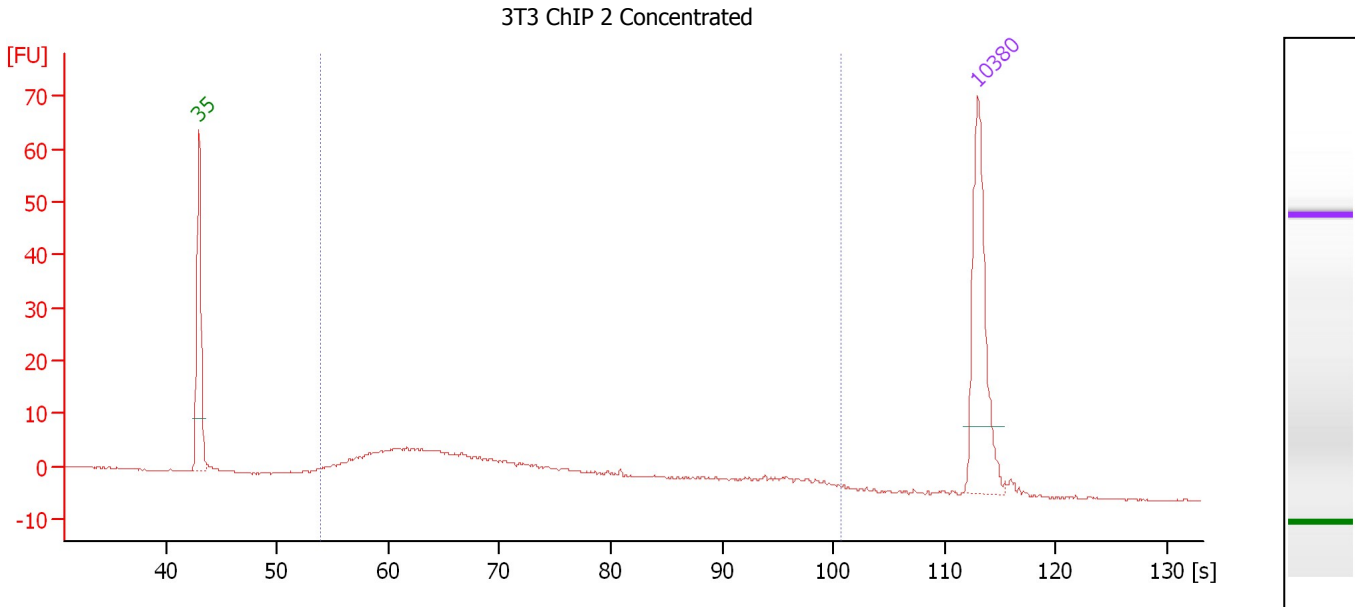
**Region table for sample 7 : 3T3 ChIP 1 Concentrated**

From [s]	To [s]	Average Size [bp]	Molarity [pmol/l]	Conc. [pg/μl]	Corr. Area	% of Total	Size distribution in CV [%]	Color
55.32	104.59	739	1,443.3	312.70	253.6	94	85.9	Blue

Assay Class: High Sensitivity DNA Assay  
 Data Path: C:\...ents and Settings\Bioanalyzer\2013-09-27\2013-09-27\_002.xad

Created: 9/27/2013 11:19:42 AM  
 Modified: 9/27/2013 12:06:52 PM

**Electropherogram Summary Continued ...**



**Overall Results for sample 8 : 3T3 ChIP 2 Concentrated**

Number of peaks found: 0                      Corr. Area 1: 171.8  
 Noise: 0.1

**Peak table for sample 8 : 3T3 ChIP 2 Concentrated**

Peak	Size [bp]	Conc. [pg/μl]	Molarity [pmol/l]	Observations
1	35	125.00	5,411.3	Lower Marker
2	10,380	75.00	10.9	Upper Marker

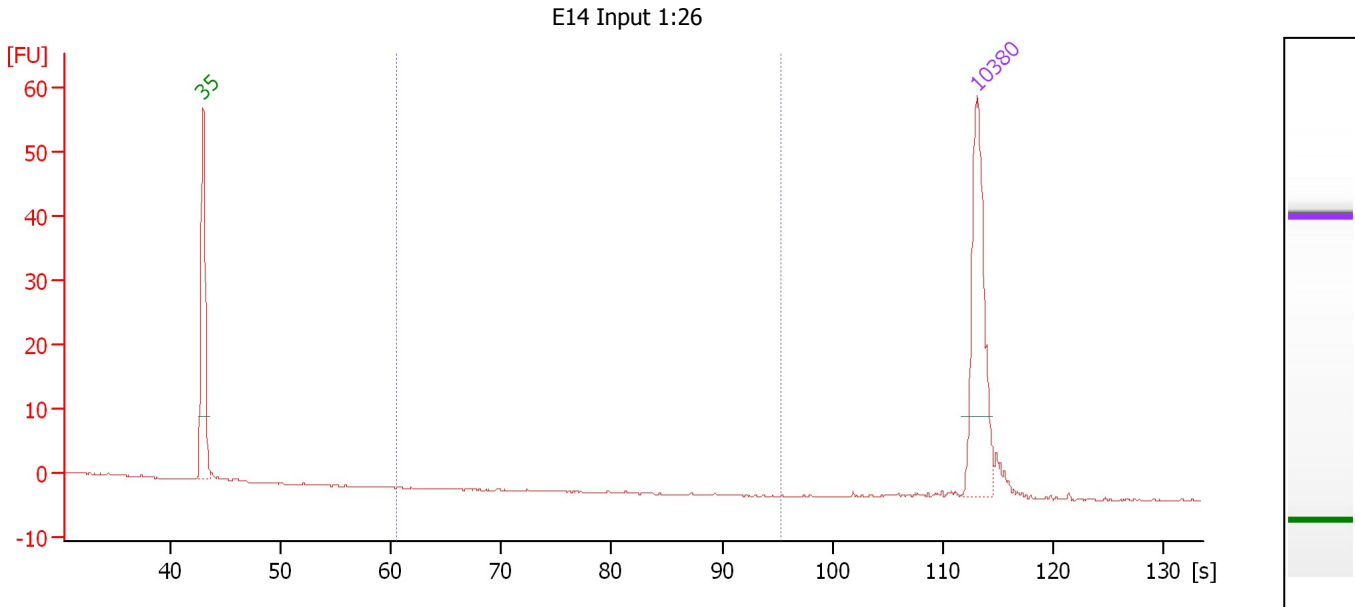
**Region table for sample 8 : 3T3 ChIP 2 Concentrated**

From [s]	To [s]	Average Size [bp]	Molarity [pmol/l]	Conc. [pg/μl]	Corr. Area	% of Total	Size distribution in CV [%]	Color
53.98	100.75	408	1,360.4	234.14	171.8	95	78.0	Blue

Assay Class: High Sensitivity DNA Assay  
 Data Path: C:\...ents and Settings\Bioanalyzer\2013-09-27\2013-09-27\_002.xad

Created: 9/27/2013 11:19:42 AM  
 Modified: 9/27/2013 12:06:52 PM

**Electropherogram Summary Continued ...**



**Setpoint Deviations for sample 9 : E14 Input 1:26**

Height Threshold [FU] : 10

**Overall Results for sample 9 : E14 Input 1:26**

Number of peaks found: 0                      Corr. Area 1: 0.0  
 Noise: 0.1

**Peak table for sample 9 : E14 Input 1:26**

Peak	Size [bp]	Conc. [pg/μl]	Molarity [pmol/l]	Observations
1	35	125.00	5,411.3	Lower Marker
2	10,380	75.00	10.9	Upper Marker

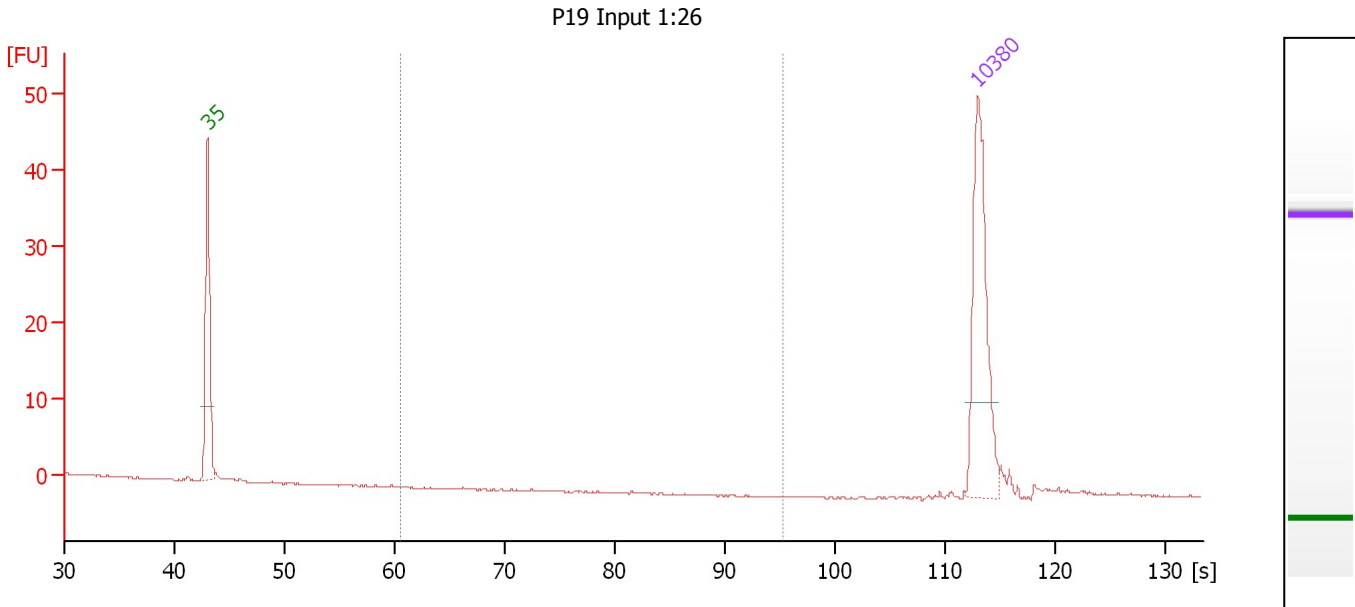
**Region table for sample 9 : E14 Input 1:26**

From [s]	To [s]	Average Size [bp]	Molarity [pmol/l]	Conc. [pg/μl]	Corr. Area % of Total	Size distribution in CV [%]	Color
60.50	95.32	0	0.0	0.00	0.0	0.0	Blue

Assay Class: High Sensitivity DNA Assay  
 Data Path: C:\...ents and Settings\Bioanalyzer\2013-09-27\2013-09-27\_002.xad

Created: 9/27/2013 11:19:42 AM  
 Modified: 9/27/2013 12:06:52 PM

**Electropherogram Summary Continued ...**



**Overall Results for sample 10 : P19 Input 1:26**

Number of peaks found: 0                      Corr. Area 1: 0.0  
 Noise: 0.1

**Peak table for sample 10 : P19 Input 1:26**

Peak	Size [bp]	Conc. [pg/μl]	Molarity [pmol/l]	Observations
1	35	125.00	5,411.3	Lower Marker
2	10,380	75.00	10.9	Upper Marker

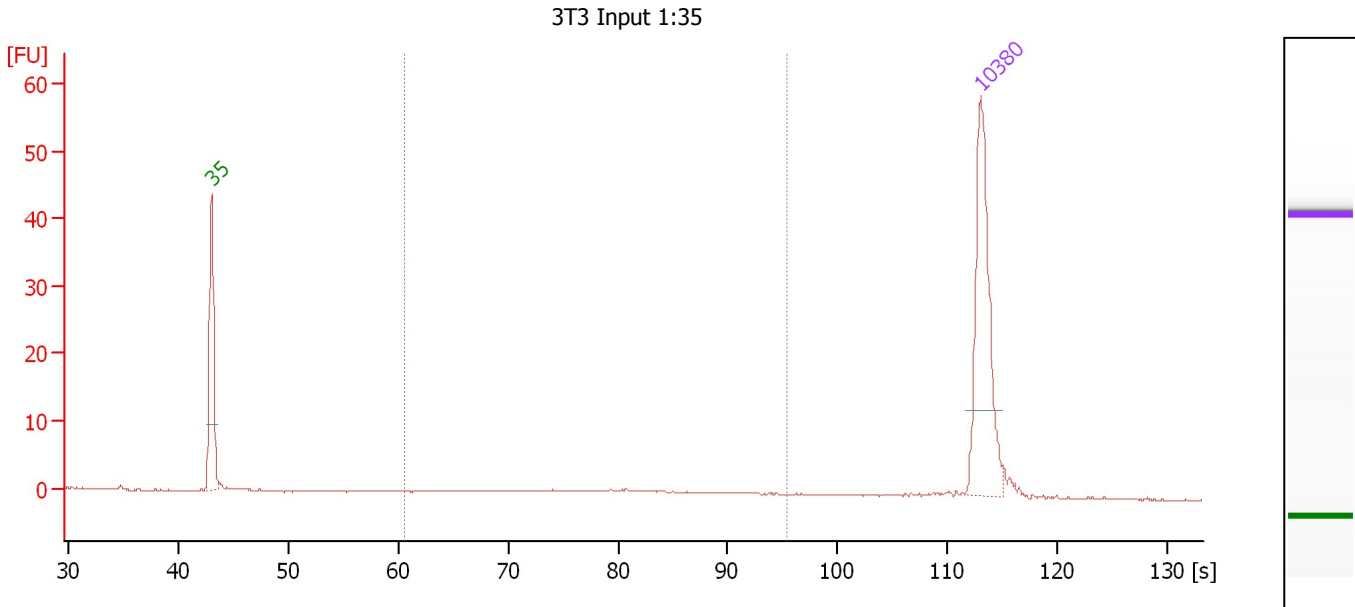
**Region table for sample 10 : P19 Input 1:26**

From [s]	To [s]	Average Size [bp]	Molarity [pmol/l]	Conc. [pg/μl]	Corr. Area % of Total	Size distribution in CV [%]	Color
60.50	95.32	0	0.0	0.00	0.0	0	■

Assay Class: High Sensitivity DNA Assay  
 Data Path: C:\...ents and Settings\Bioanalyzer\2013-09-27\2013-09-27\_002.xad

Created: 9/27/2013 11:19:42 AM  
 Modified: 9/27/2013 12:06:52 PM

**Electropherogram Summary Continued ...**



**Overall Results for sample 11 : 3T3 Input 1:35**

Number of peaks found: 0                      Corr. Area 1: 16.6  
 Noise: 0.1

**Peak table for sample 11 : 3T3 Input 1:35**

Peak	Size [bp]	Conc. [pg/μl]	Molarity [pmol/l]	Observations
1	35	125.00	5,411.3	Lower Marker
2	10,380	75.00	10.9	Upper Marker

**Region table for sample 11 : 3T3 Input 1:35**

From [s]	To [s]	Average Size [bp]	Molarity [pmol/l]	Conc. [pg/μl]	Corr. Area % of Total	Size distribution in CV [%]	Color
60.50	95.32	469	95.4	24.56	16.6 53	37.3	■



Assay Class: High Sensitivity DNA Assay  
Data Path: C:\...ents and Settings\Bioanalyzer\2013-09-27\2013-09-27\_002.xad

Created: 9/27/2013 11:19:42 AM  
Modified: 9/27/2013 12:06:52 PM

**Gel Image**

