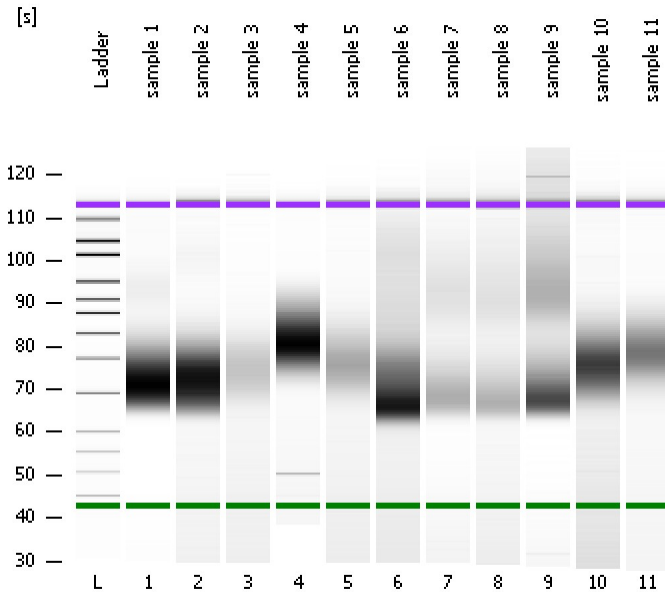


Assay Class: High Sensitivity DNA Assay  
Data Path: C:\...ents and Settings\Bioanalyzer\2013-09-27\2013-09-27\_004.xad

Created: 9/27/2013 2:30:49 PM  
Modified: 9/27/2013 3:13:25 PM

**Electrophoresis File Run Summary**



Instrument Information:

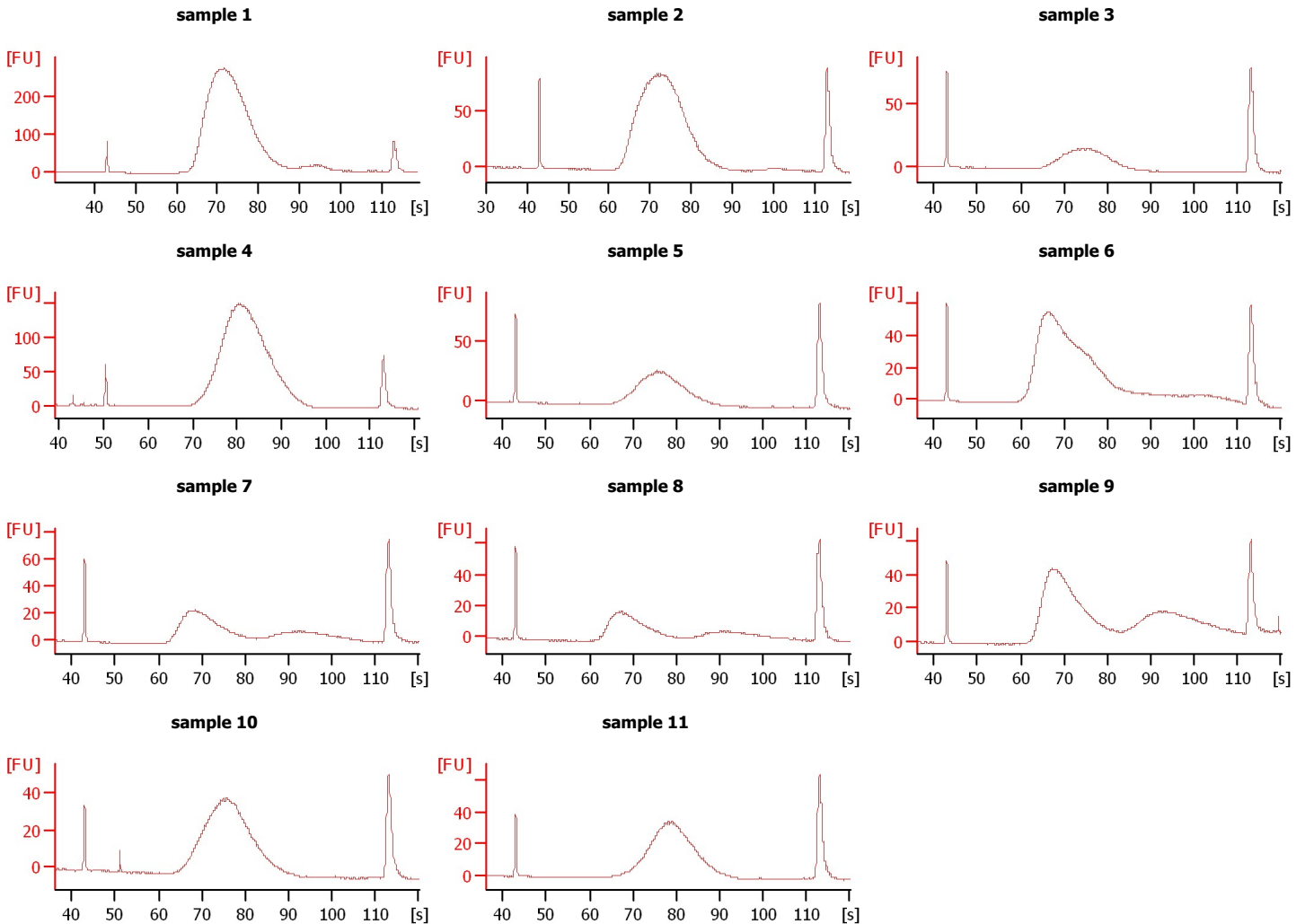
Instrument Name: DE13701086      Firmware: C.01.069  
Serial#: DE13701086      Type: G2938B

Assay Information:

Assay Origin Path: C:\Program Files\Agilent\2100 bioanalyzer\2100 expert\assays\dsDNA\High Sensitivity DNA.xsy  
Assay Class: High Sensitivity DNA Assay  
Version: 1.03  
Assay Comments: Copyright © 2003-2010 Agilent Technologies

Chip Information:

Chip Lot #:      Reagent Kit Lot #:      Chip Comments:



Assay Class: High Sensitivity DNA Assay  
Data Path: C:\...ents and Settings\Bioanalyzer\2013-09-27\2013-09-27\_004.xad

Created: 9/27/2013 2:30:49 PM  
Modified: 9/27/2013 3:13:25 PM

**Electrophoresis File Run Summary (Chip Summary)**

Sample Name	Sample Comment	Rest. Digest	Status	Observation	Result Label	Result Color
sample 1		<input type="checkbox"/>	✓			
sample 2		<input type="checkbox"/>	✓			
sample 3		<input type="checkbox"/>	✓			
sample 4		<input type="checkbox"/>	✓			
sample 5		<input type="checkbox"/>	✓			
sample 6		<input type="checkbox"/>	✓			
sample 7		<input type="checkbox"/>	✓			
sample 8		<input type="checkbox"/>	✓			
sample 9		<input type="checkbox"/>	✓			
sample 10		<input type="checkbox"/>	✓			
sample 11		<input type="checkbox"/>	✓			
Ladder		<input type="checkbox"/>	✓			

**Chip Lot #**

**Reagent Kit Lot #**

**Chip Comments :**

Assay Class: High Sensitivity DNA Assay  
Data Path: C:\...ents and Settings\Bioanalyzer\2013-09-27\2013-09-27\_004.xad

Created: 9/27/2013 2:30:49 PM  
Modified: 9/27/2013 3:13:25 PM

**Electrophoresis Assay Details**

**General Analysis Settings**

Number of Available Sample and Ladder Wells (Max.) : 12  
Minimum Visible Range [s] : 32  
Maximum Visible Range [s] : 138  
Start Analysis Time Range [s] : 33  
End Analysis Time Range [s] : 137.5  
Ladder Concentration [pg/μl] : 1950  
Uses Standard Area for Ladder Fragments  
Lower Marker Concentration [pg/μl] : 125  
Upper Marker Concentration [pg/μl] : 75  
Used Upper Marker for Quantitation  
Standard Curve Fit is Point to Point  
Show Data Aligned to Lower and Upper Marker

**Integrator Settings**

Integration Start Time [s] : 33.05  
Integration End Time [s] : 137  
Slope Threshold : 0.8  
Height Threshold [FU] : 5  
Area Threshold : 0.1  
Width Threshold [s] : 0.6  
Baseline Plateau [s] : 0.5

**Filter Settings**

Filter Width [s] : 0.5  
Polynomial Order : 4

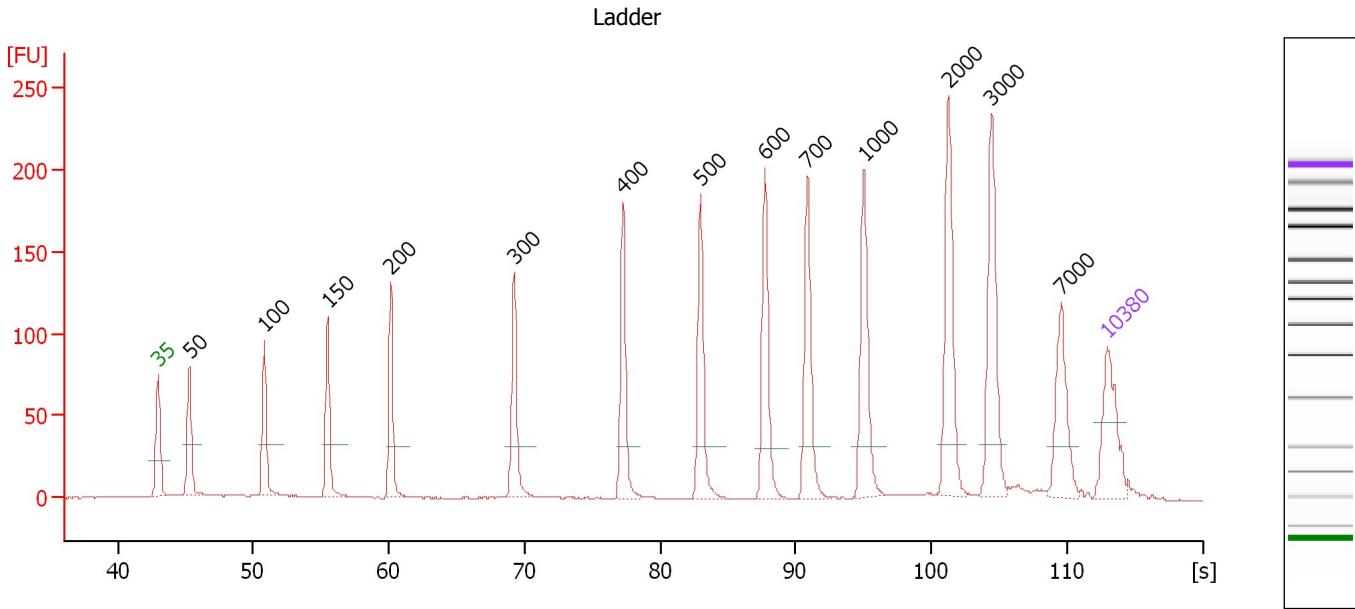
**Ladder**

Ladder Peak	Size	Area
1	35	160
2	50	210
3	100	208
4	150	221
5	200	242
6	300	270
7	400	305
8	500	306
9	600	336
10	700	321
11	1000	366
12	2000	413
13	3000	411
14	7000	400
15	10380	214

Assay Class: High Sensitivity DNA Assay  
 Data Path: C:\...ents and Settings\Bioanalyzer\2013-09-27\2013-09-27\_004.xad

Created: 9/27/2013 2:30:49 PM  
 Modified: 9/27/2013 3:13:25 PM

**Electropherogram Summary**



**Overall Results for Ladder**

Noise: 0.2

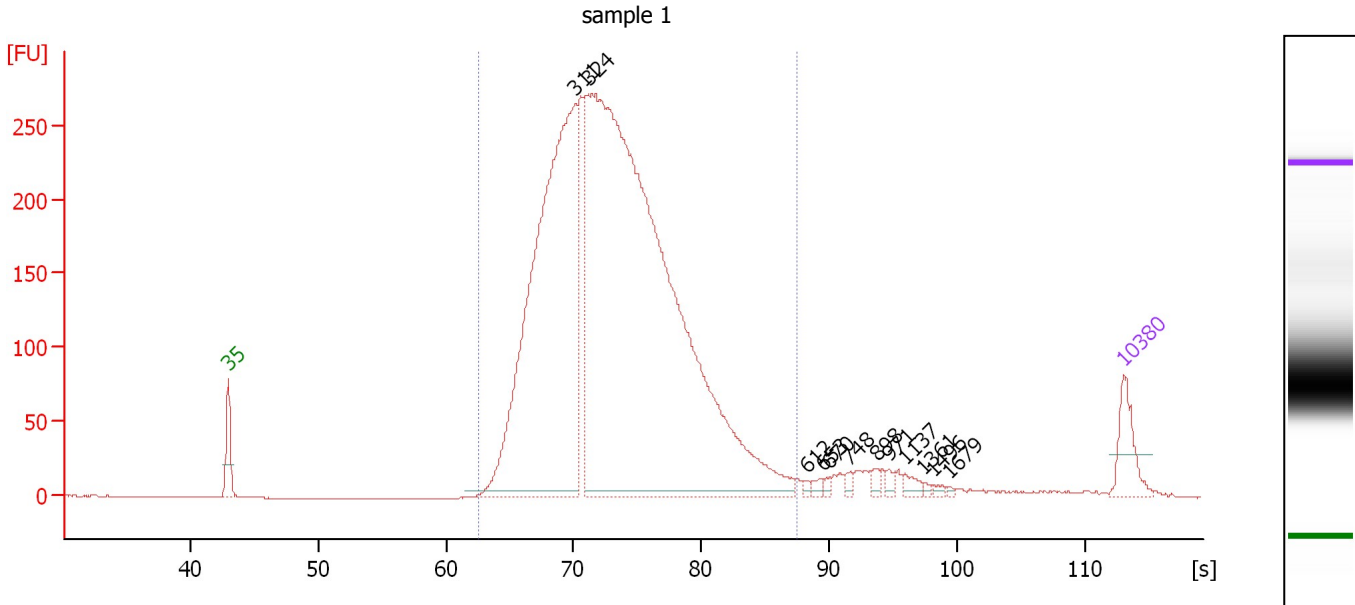
**Peak table for Ladder**

Peak	Size [bp]	Conc. [pg/μl]	Molarity [pmol/l]	Observations
1	35	125.00	5,411.3	Lower Marker
2	50	150.00	4,545.5	Ladder Peak
3	100	150.00	2,272.7	Ladder Peak
4	150	150.00	1,515.2	Ladder Peak
5	200	150.00	1,136.4	Ladder Peak
6	300	150.00	757.6	Ladder Peak
7	400	150.00	568.2	Ladder Peak
8	500	150.00	454.5	Ladder Peak
9	600	150.00	378.8	Ladder Peak
10	700	150.00	324.7	Ladder Peak
11	1,000	150.00	227.3	Ladder Peak
12	2,000	150.00	113.6	Ladder Peak
13	3,000	150.00	75.8	Ladder Peak
14	7,000	150.00	32.5	Ladder Peak
15	10,380	75.00	10.9	Upper Marker

Assay Class: High Sensitivity DNA Assay  
 Data Path: C:\...ents and Settings\Bioanalyzer\2013-09-27\2013-09-27\_004.xad

Created: 9/27/2013 2:30:49 PM  
 Modified: 9/27/2013 3:13:25 PM

**Electropherogram Summary Continued ...**



**Overall Results for sample 1 : sample 1**

Number of peaks found: 12                      Corr. Area 1: 4,642.8  
 Noise: 0.1

**Peak table for sample 1 : sample 1**

Peak	Size [bp]	Conc. [pg/μl]	Molarity [pmol/l]	Observations
1	35	125.00	5,411.3	Lower Marker
2	311	1,837.50	8,944.5	
3	324	3,573.86	16,725.2	
4	612	6.96	17.2	
5	653	14.06	32.6	
6	670	8.25	18.7	
7	748	13.28	26.9	
8	898	13.80	23.3	
9	971	12.47	19.5	
10	1,137	19.74	26.3	
11	1,361	5.96	6.6	
12	1,496	7.11	7.2	
13	1,679	4.19	3.8	
14	10,380	75.00	10.9	Upper Marker

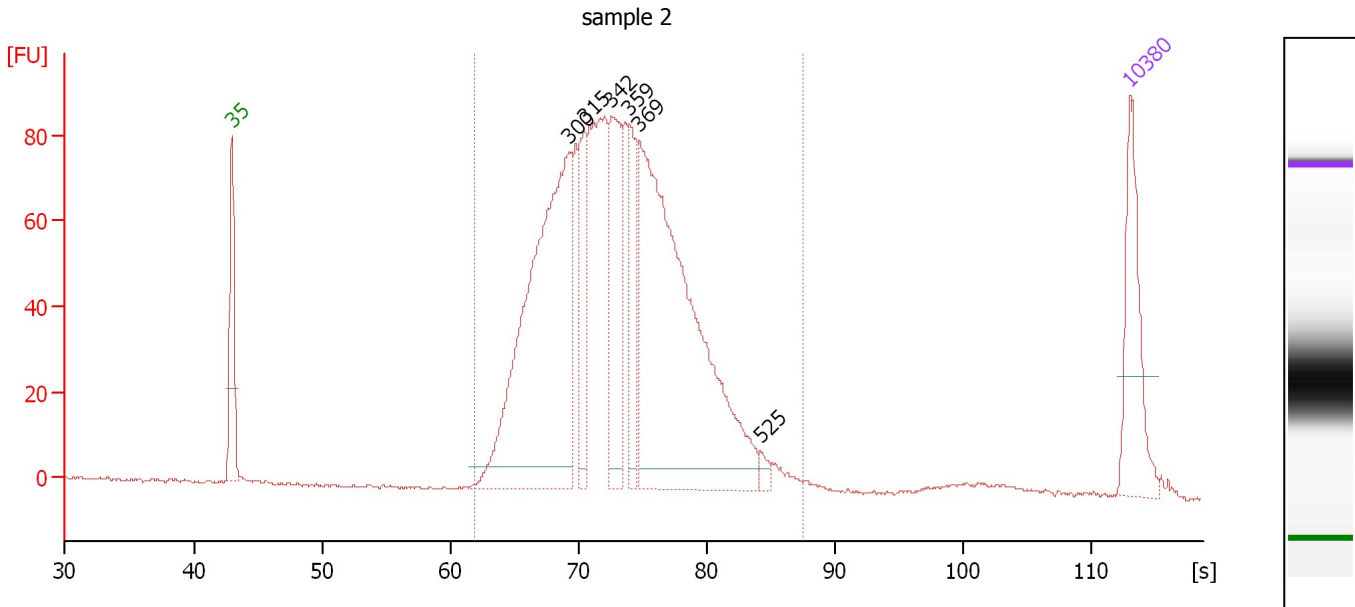
**Region table for sample 1 : sample 1**

From [s]	To [s]	Average Size [bp]	Molarity [pmol/l]	Conc. [pg/μl]	Corr. Area % of Total	Size distribution in CV [%]	Color
62.63	87.42	350	24,026.5	5,328.74	4,642.8 96	18.1	Blue

Assay Class: High Sensitivity DNA Assay  
 Data Path: C:\...ents and Settings\Bioanalyzer\2013-09-27\2013-09-27\_004.xad

Created: 9/27/2013 2:30:49 PM  
 Modified: 9/27/2013 3:13:25 PM

**Electropherogram Summary Continued ...**



**Overall Results for sample 2 : sample 2**

Number of peaks found: 6                      Corr. Area 1: 1,634.9  
 Noise: 0.4

**Peak table for sample 2 : sample 2**

Peak	Size [bp]	Conc. [pg/μl]	Molarity [pmol/l]	Observations
1	35	125.00	5,411.3	Lower Marker
2	300	521.67	2,634.1	
3	315	94.95	456.5	
4	342	142.81	633.4	
5	359	71.70	302.8	
6	369	551.44	2,266.5	
7	525	7.87	22.7	
8	10,380	75.00	10.9	Upper Marker

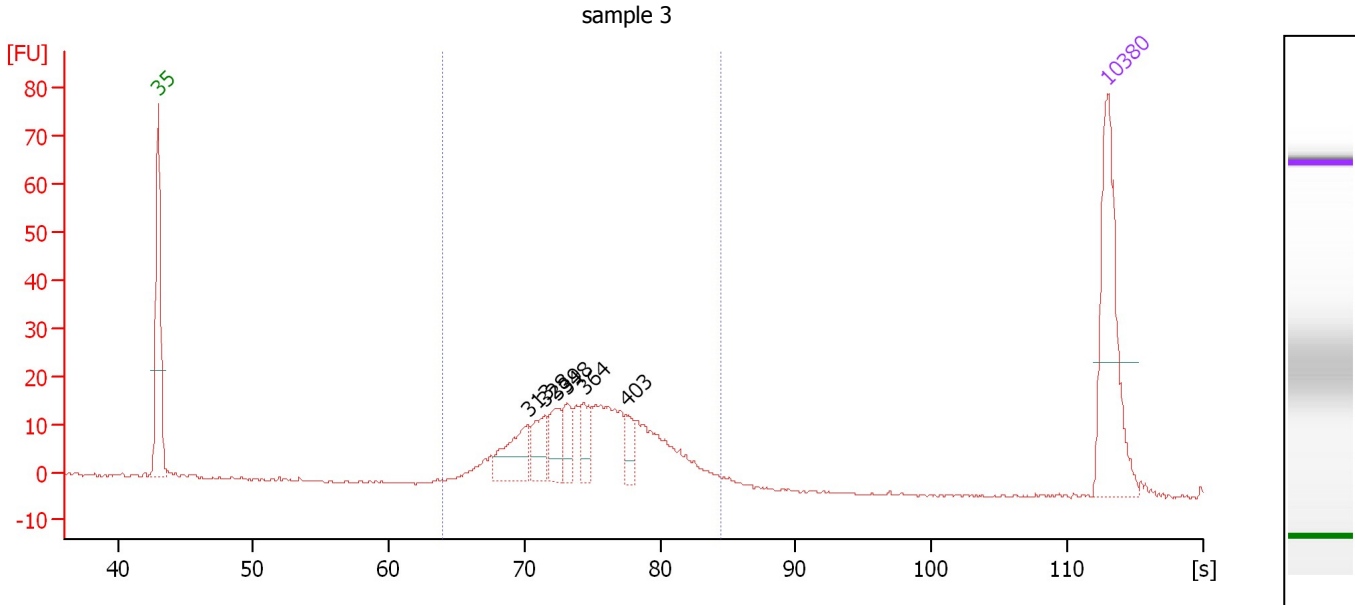
**Region table for sample 2 : sample 2**

From [s]	To [s]	Average Size [bp]	Molarity [pmol/l]	Conc. [pg/μl]	Corr. Area % of Total	Size distribution in CV [%]	Color	
61.97	87.50	350	7,882.2	1,742.58	1,634.9	98	18.5	Blue

Assay Class: High Sensitivity DNA Assay  
 Data Path: C:\...ents and Settings\Bioanalyzer\2013-09-27\2013-09-27\_004.xad

Created: 9/27/2013 2:30:49 PM  
 Modified: 9/27/2013 3:13:25 PM

**Electropherogram Summary Continued ...**



**Overall Results for sample 3 : sample 3**

Number of peaks found: 6                      Corr. Area 1: 277.3  
 Noise: 0.3

**Peak table for sample 3 : sample 3**

Peak	Size [bp]	Conc. [pg/μl]	Molarity [pmol/l]	Observations
1	35	125.00	5,411.3	Lower Marker
2	313	38.44	186.2	
3	328	25.22	116.5	
4	339	23.39	104.7	
5	348	18.03	78.5	
6	364	18.66	77.7	
7	403	13.99	52.6	
8	10,380	75.00	10.9	Upper Marker

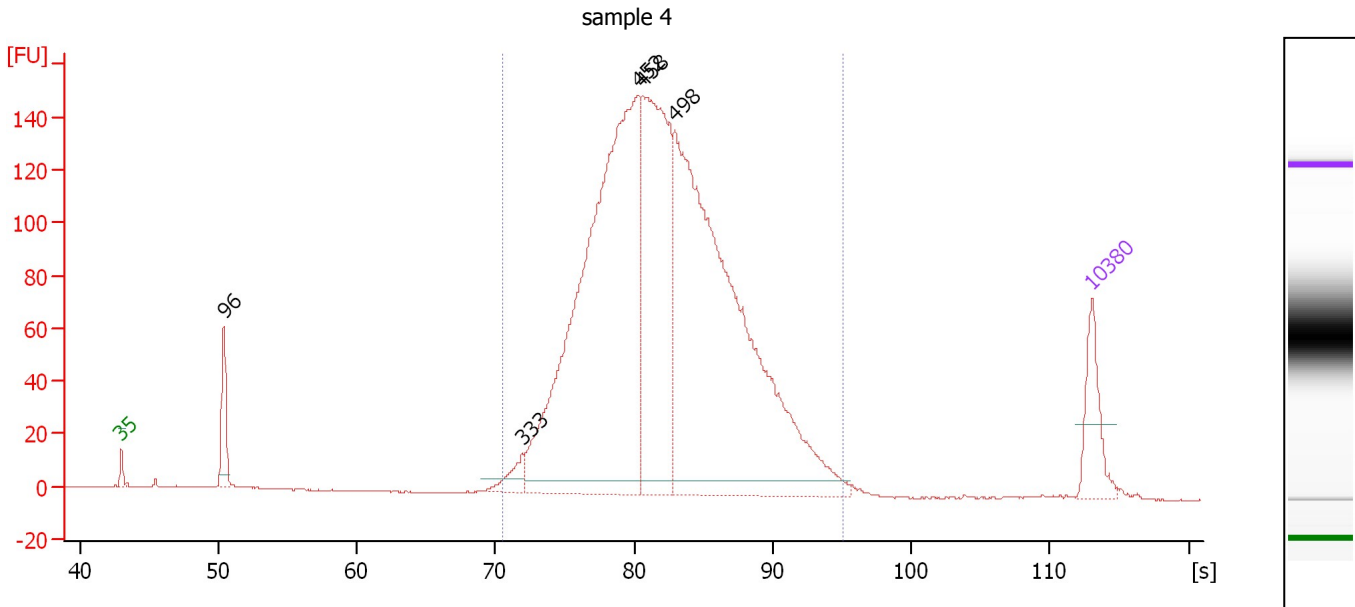
**Region table for sample 3 : sample 3**

From [s]	To [s]	Average Size [bp]	Molarity [pmol/l]	Conc. [pg/μl]	Corr. Area % of Total	Size distribution in CV [%]	Color
64.01	84.54	374	1,271.8	303.69	277.3 97	15.7	Blue

Assay Class: High Sensitivity DNA Assay  
 Data Path: C:\...ents and Settings\Bioanalyzer\2013-09-27\2013-09-27\_004.xad

Created: 9/27/2013 2:30:49 PM  
 Modified: 9/27/2013 3:13:25 PM

**Electropherogram Summary Continued ...**



**Overall Results for sample 4 : sample 4**

Number of peaks found: 5                      Corr. Area 1: 2,673.6  
 Noise: 0.2

**Peak table for sample 4 : sample 4**

Peak	Size [bp]	Conc. [pg/μl]	Molarity [pmol/l]	Observations
1	35	125.00	5,411.3	Lower Marker
2	96	113.79	1,790.5	
3	333	42.37	192.5	
4	452	1,326.14	4,445.3	
5	458	631.65	2,089.0	
6	498	1,346.25	4,093.9	
7	10,380	75.00	10.9	Upper Marker

**Region table for sample 4 : sample 4**

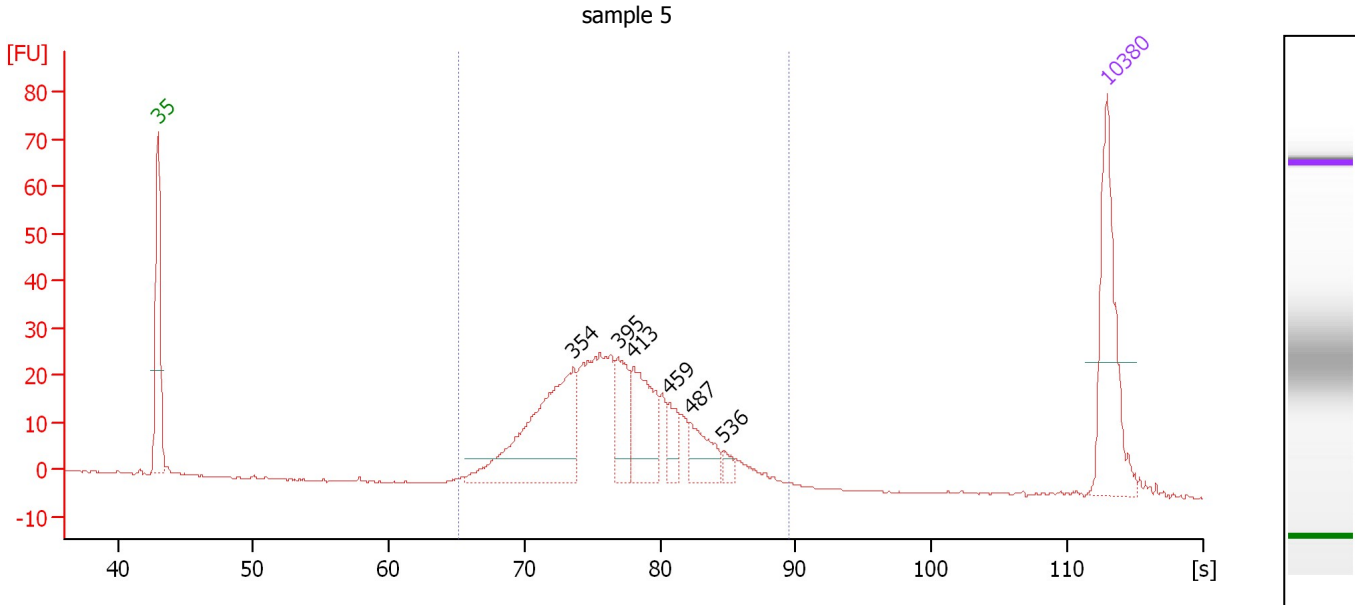
From [s]	To [s]	Average Size [bp]	Molarity [pmol/l]	Conc. [pg/μl]	Corr. Area % of Total	Size distribution in CV [%]	Color
70.46	95.07	495	10,541.3	3,270.20	2,673.6 96	21.0	Blue



Assay Class: High Sensitivity DNA Assay  
 Data Path: C:\...ents and Settings\Bioanalyzer\2013-09-27\2013-09-27\_004.xad

Created: 9/27/2013 2:30:49 PM  
 Modified: 9/27/2013 3:13:25 PM

**Electropherogram Summary Continued ...**



**Overall Results for sample 5 : sample 5**

Number of peaks found: 6      Corr. Area 1: 428.6  
 Noise: 0.1

**Peak table for sample 5 : sample 5**

Peak	Size [bp]	Conc. [pg/μl]	Molarity [pmol/l]	Observations
1	35	125.00	5,411.3	Lower Marker
2	354	154.24	659.3	
3	395	41.43	158.9	
4	413	66.26	243.1	
5	459	20.54	67.8	
6	487	30.99	96.5	
7	536	6.32	17.9	
8	10,380	75.00	10.9	Upper Marker

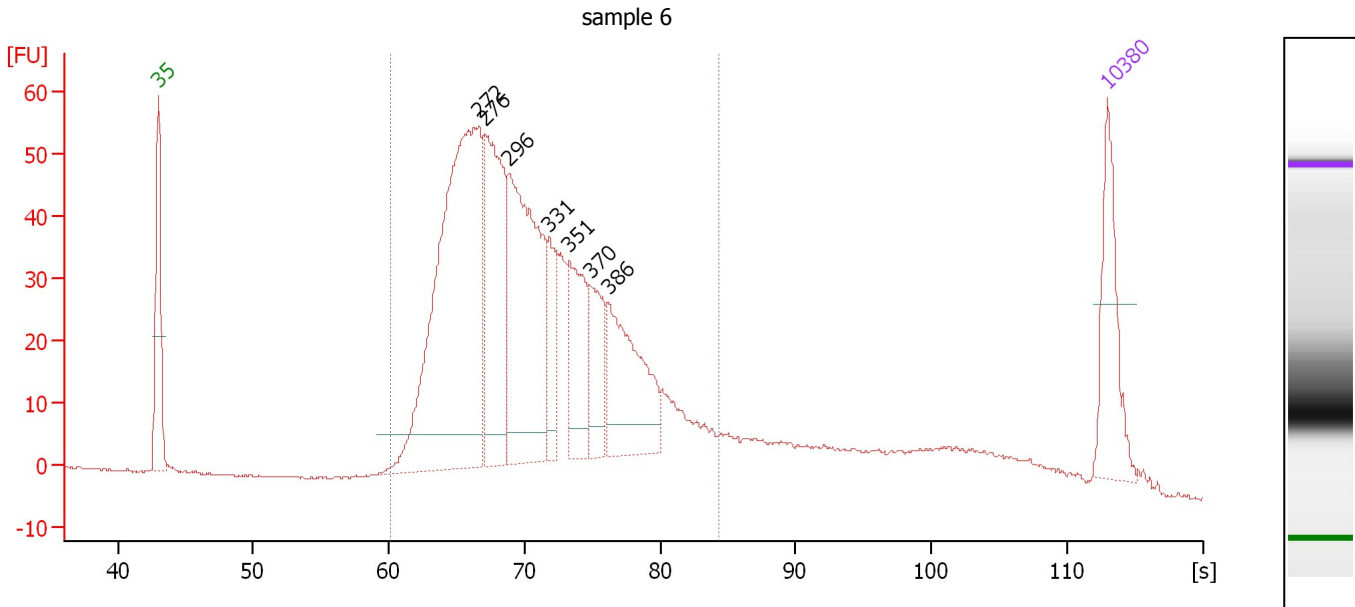
**Region table for sample 5 : sample 5**

From [s]	To [s]	Average Size [bp]	Molarity [pmol/l]	Conc. [pg/μl]	Corr. Area	% of Total	Size distribution in CV [%]	Color
65.12	89.46	401	1,919.1	488.80	428.6	99	17.7	Blue

Assay Class: High Sensitivity DNA Assay  
 Data Path: C:\...ents and Settings\Bioanalyzer\2013-09-27\2013-09-27\_004.xad

Created: 9/27/2013 2:30:49 PM  
 Modified: 9/27/2013 3:13:25 PM

**Electropherogram Summary Continued ...**



**Overall Results for sample 6 : sample 6**

Number of peaks found: 7                      Corr. Area 1: 1,042.4  
 Noise: 0.1

**Peak table for sample 6 : sample 6**

Peak	Size [bp]	Conc. [pg/μl]	Molarity [pmol/l]	Observations
1	35	125.00	5,411.3	Lower Marker
2	272	572.56	3,194.9	
3	276	235.76	1,292.0	
4	296	312.88	1,603.0	
5	331	67.33	307.9	
6	351	101.99	440.5	
7	370	67.80	277.9	
8	386	146.74	576.2	
9	10,380	75.00	10.9	Upper Marker

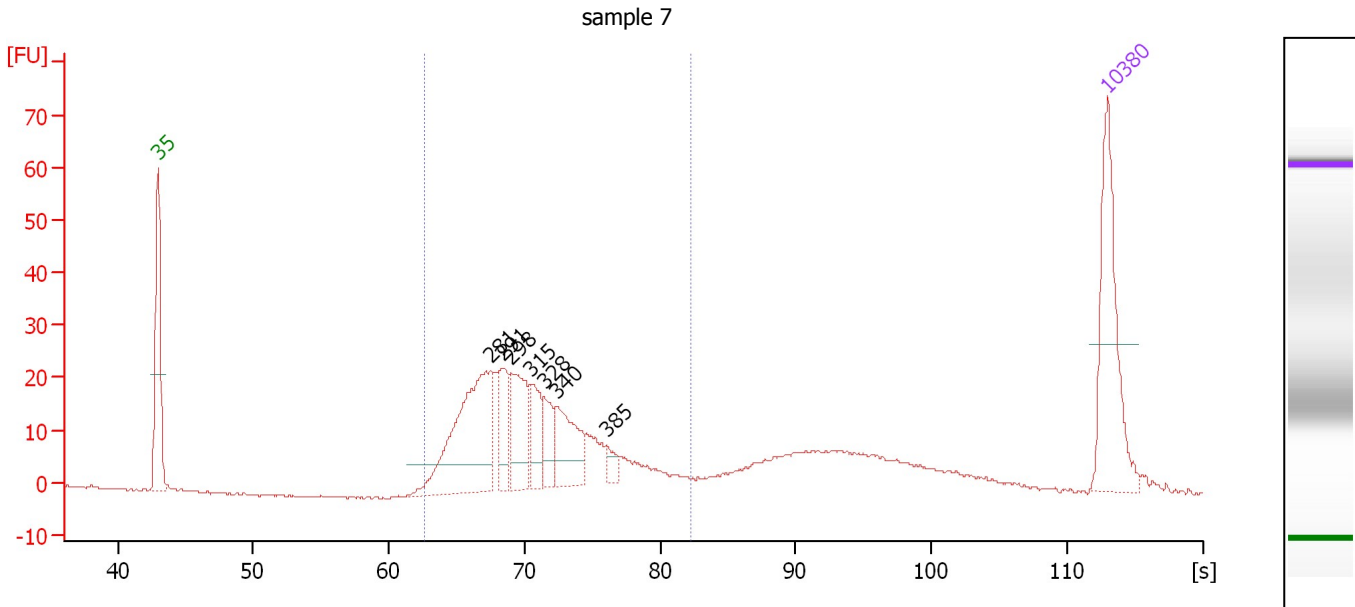
**Region table for sample 6 : sample 6**

From [s]	To [s]	Average Size [bp]	Molarity [pmol/l]	Conc. [pg/μl]	Corr. Area % of Total	Size distribution in CV [%]	Color
60.17	84.32	322	9,041.8	1,814.30	1,042.4 85	21.5	Blue

Assay Class: High Sensitivity DNA Assay  
 Data Path: C:\...ents and Settings\Bioanalyzer\2013-09-27\2013-09-27\_004.xad

Created: 9/27/2013 2:30:49 PM  
 Modified: 9/27/2013 3:13:25 PM

**Electropherogram Summary Continued ...**



**Overall Results for sample 7 : sample 7**

Number of peaks found: 7                      Corr. Area 1: 333.6  
 Noise: 0.2

**Peak table for sample 7 : sample 7**

Peak	Size [bp]	Conc. [pg/μl]	Molarity [pmol/l]	Observations
1	35	125.00	5,411.3	Lower Marker
2	281	150.99	813.2	
3	291	37.96	197.4	
4	298	58.09	295.4	
5	315	32.99	158.6	
6	328	23.34	107.9	
7	340	49.01	218.7	
8	385	8.70	34.3	
9	10,380	75.00	10.9	Upper Marker

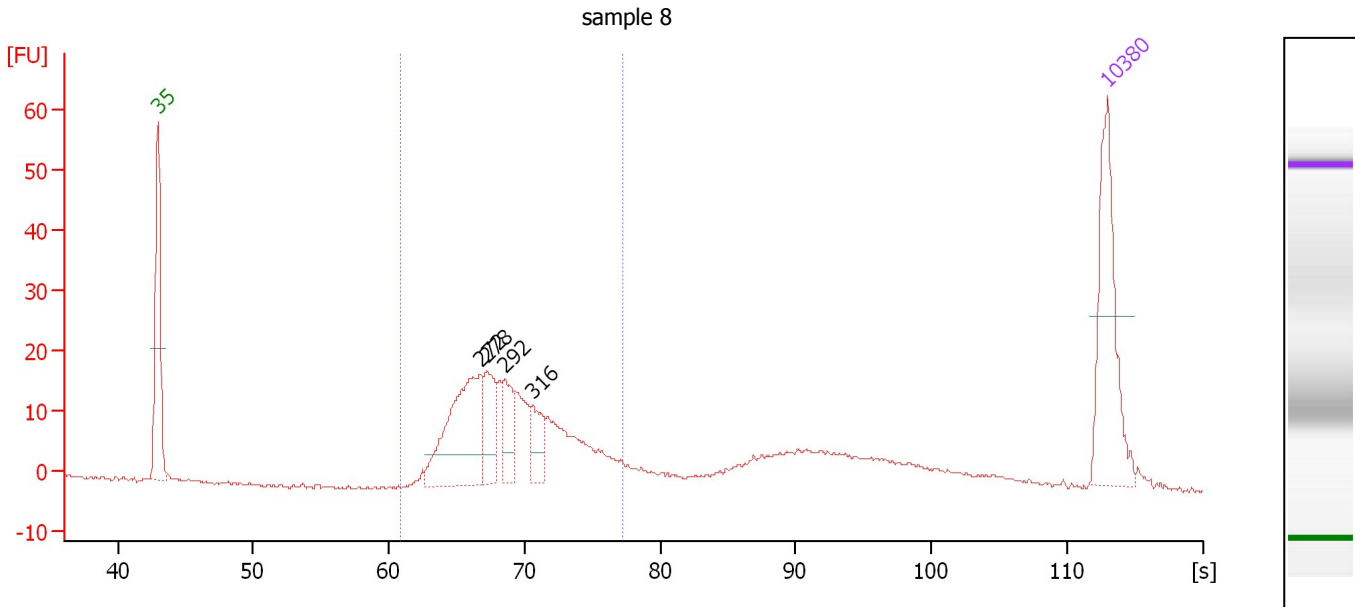
**Region table for sample 7 : sample 7**

From [s]	To [s]	Average Size [bp]	Molarity [pmol/l]	Conc. [pg/μl]	Corr. Area % of Total	Size distribution in CV [%]	Color
62.71	82.25	320	2,199.0	448.21	333.6 67	16.8	■

Assay Class: High Sensitivity DNA Assay  
 Data Path: C:\...ents and Settings\Bioanalyzer\2013-09-27\2013-09-27\_004.xad

Created: 9/27/2013 2:30:49 PM  
 Modified: 9/27/2013 3:13:25 PM

**Electropherogram Summary Continued ...**



**Overall Results for sample 8 : sample 8**

Number of peaks found: 4                      Corr. Area 1: 227.4  
 Noise: 0.3

**Peak table for sample 8 : sample 8**

Peak	Size [bp]	Conc. [pg/μl]	Molarity [pmol/l]	Observations
1	35	125.00	5,411.3	Lower Marker
2	272	122.87	683.3	
3	278	40.77	222.6	
4	292	32.39	168.0	
5	316	25.49	122.1	
6	10,380	75.00	10.9	Upper Marker

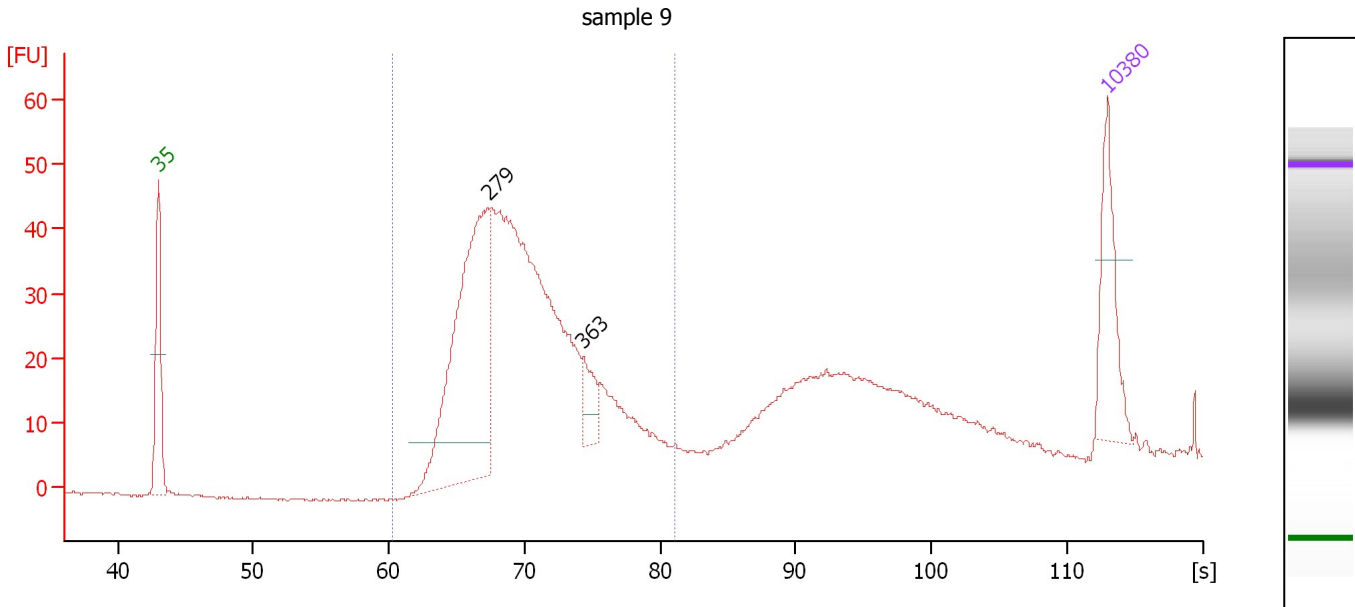
**Region table for sample 8 : sample 8**

From [s]	To [s]	Average Size [bp]	Molarity [pmol/l]	Conc. [pg/μl]	Corr. Area % of Total	Size distribution in CV [%]	Color
60.95	77.33	301	1,807.0	350.87	227.4 61	13.6	Blue

Assay Class: High Sensitivity DNA Assay  
 Data Path: C:\...ents and Settings\Bioanalyzer\2013-09-27\2013-09-27\_004.xad

Created: 9/27/2013 2:30:49 PM  
 Modified: 9/27/2013 3:13:25 PM

**Electropherogram Summary Continued ...**



**Overall Results for sample 9 : sample 9**

Number of peaks found: 2                      Corr. Area 1: 569.3  
 Noise: 0.2

**Peak table for sample 9 : sample 9**

Peak	Size [bp]	Conc. [pg/μl]	Molarity [pmol/l]	Observations
1	35	125.00	5,411.3	Lower Marker
2	279	405.40	2,202.1	
3	363	38.01	158.7	
4	10,380	75.00	10.9	Upper Marker

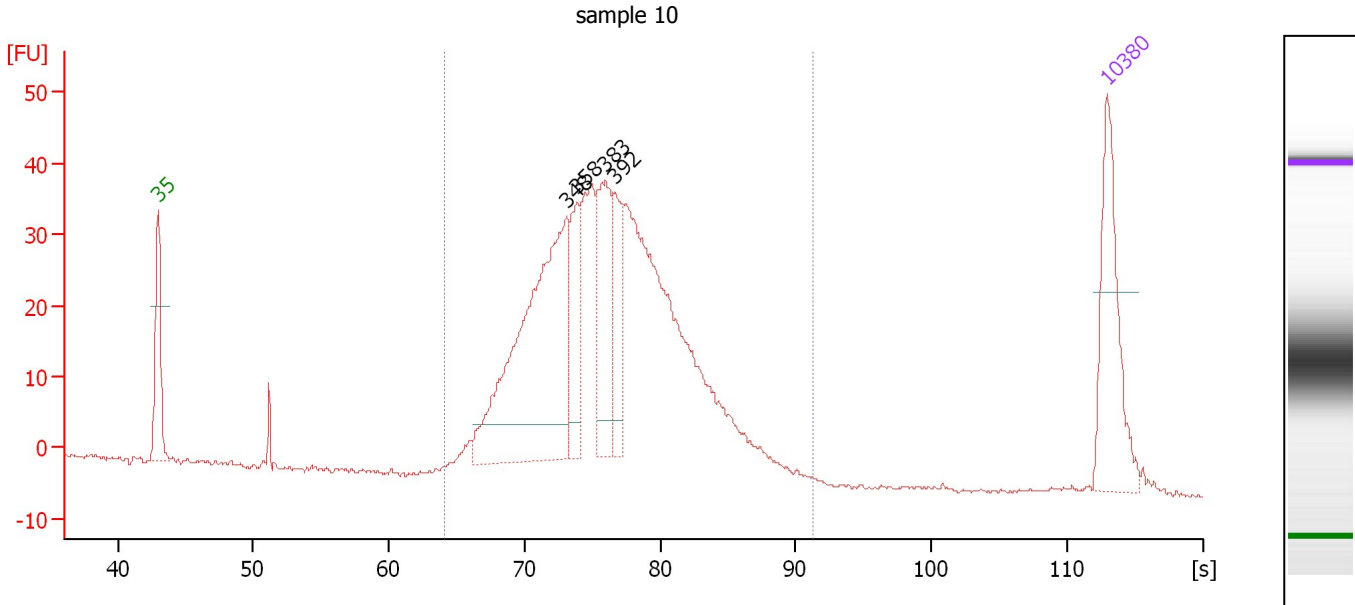
**Region table for sample 9 : sample 9**

From [s]	To [s]	Average Size [bp]	Molarity [pmol/l]	Conc. [pg/μl]	Corr. Area % of Total	Size distribution in CV [%]	Color
60.32	81.17	314	6,200.1	1,247.13	569.3 65	15.9	Blue

Assay Class: High Sensitivity DNA Assay  
 Data Path: C:\...ents and Settings\Bioanalyzer\2013-09-27\2013-09-27\_004.xad

Created: 9/27/2013 2:30:49 PM  
 Modified: 9/27/2013 3:13:25 PM

**Electropherogram Summary Continued ...**



**Overall Results for sample 10 : sample 10**

Number of peaks found: 4                      Corr. Area 1: 642.4  
 Noise: 0.2

**Peak table for sample 10 : sample 10**

Peak	Size [bp]	Conc. [pg/μl]	Molarity [pmol/l]	Observations
1	35	125.00	5,411.3	Lower Marker
2	348	293.69	1,277.8	
3	358	58.45	247.4	
4	383	87.96	347.7	
5	392	46.24	178.7	
6	10,380	75.00	10.9	Upper Marker

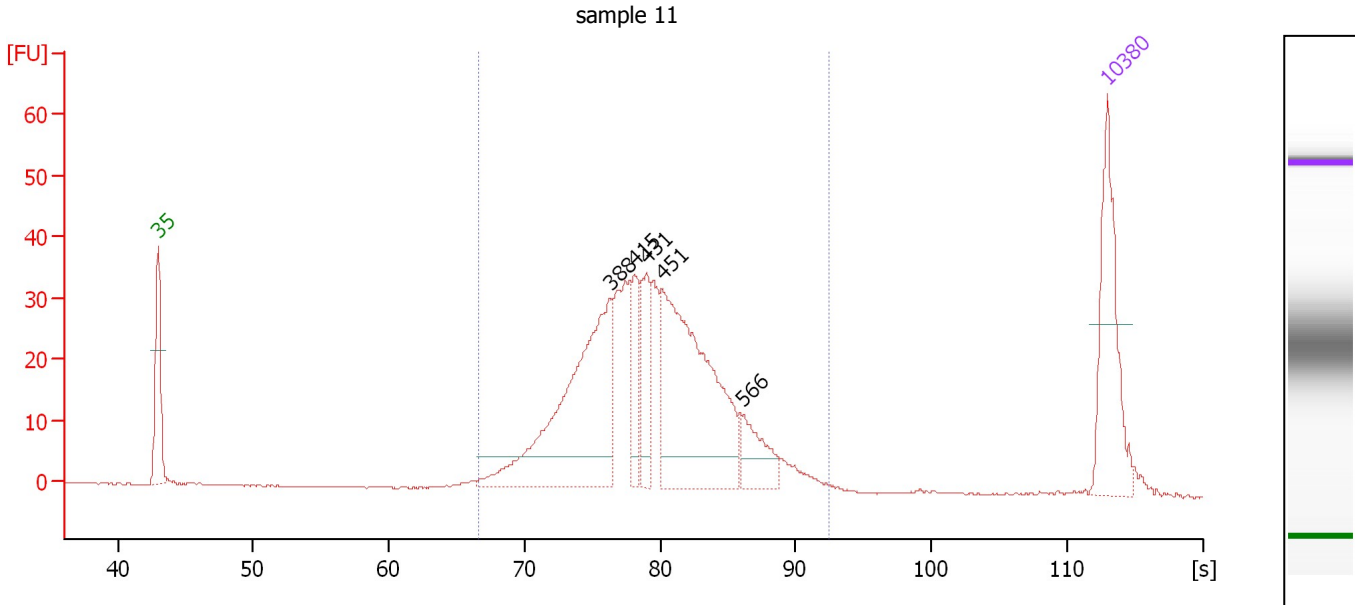
**Region table for sample 10 : sample 10**

From [s]	To [s]	Average Size [bp]	Molarity [pmol/l]	Conc. [pg/μl]	Corr. Area % of Total	Size distribution in CV [%]	Color
64.07	91.33	394	4,034.5	1,005.97	642.4 99	18.5	Blue

Assay Class: High Sensitivity DNA Assay  
 Data Path: C:\...ents and Settings\Bioanalyzer\2013-09-27\2013-09-27\_004.xad

Created: 9/27/2013 2:30:49 PM  
 Modified: 9/27/2013 3:13:25 PM

**Electropherogram Summary Continued ...**



**Overall Results for sample 11 : sample 11**

Number of peaks found: 5                      Corr. Area 1: 519.2  
 Noise: 0.1

**Peak table for sample 11 : sample 11**

Peak	Size [bp]	Conc. [pg/μl]	Molarity [pmol/l]	Observations
1	35	125.00	5,411.3	Lower Marker
2	388	225.84	882.8	
3	415	42.85	156.4	
4	431	48.03	169.0	
5	451	227.33	763.8	
6	566	36.10	96.6	
7	10,380	75.00	10.9	Upper Marker

**Region table for sample 11 : sample 11**

From [s]	To [s]	Average Size [bp]	Molarity [pmol/l]	Conc. [pg/μl]	Corr. Area % of Total	Size distribution in CV [%]	Color
66.60	92.51	442	2,686.3	748.35	519.2 97	19.0	Blue

Assay Class: High Sensitivity DNA Assay  
Data Path: C:\...ents and Settings\Bioanalyzer\2013-09-27\2013-09-27\_004.xad

Created: 9/27/2013 2:30:49 PM  
Modified: 9/27/2013 3:13:25 PM

**Gel Image**

