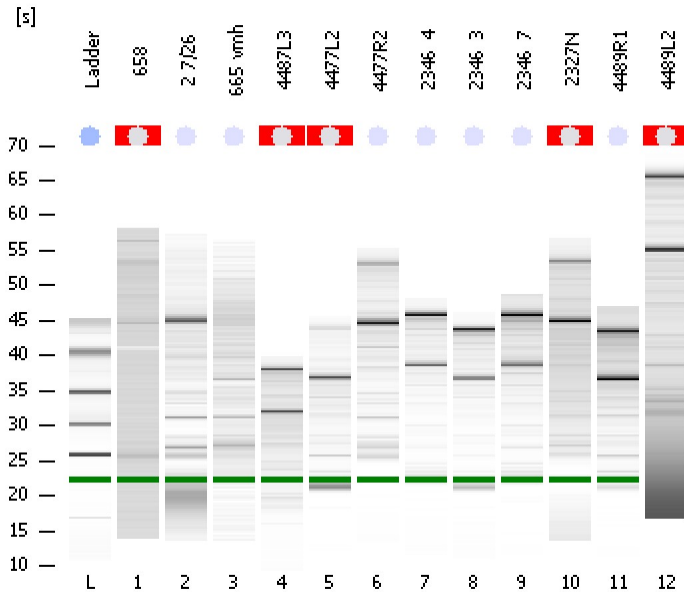


Assay Class: Eukaryote Total RNA Nano
Data Path: C:\...ents and Settings\Bioanalyzer\2013-09-27\2013-09-27_005.xad

Created: 9/27/2013 4:25:13 PM
Modified: 9/27/2013 5:08:14 PM

Electrophoresis File Run Summary



Instrument Information:

Instrument Name: DE13701086 Firmware: C.01.069
 Serial#: DE13701086 Type: G2938B

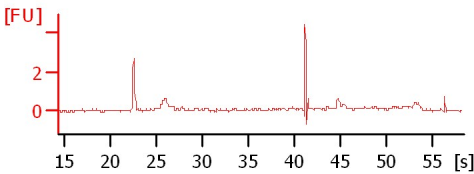
Assay Information:

Assay Origin Path: C:\Program Files\Agilent\2100 bioanalyzer\2100 expert\assays\RNA\Eukaryote Total RNA Nano Series II.xsy
 Assay Class: Eukaryote Total RNA Nano
 Version: 2.6
 Assay Comments: Total RNA Analysis ng sensitivity (Eukaryote)
 © Copyright 2003 - 2009 Agilent Technologies, Inc.

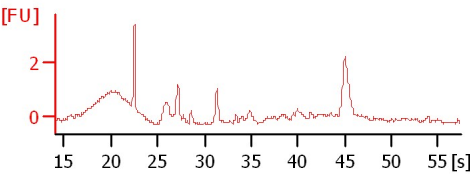
Chip Information:

Chip Lot #:
 Reagent Kit Lot #:
 Chip Comments: trizol and then mirvana extraction ineffective.

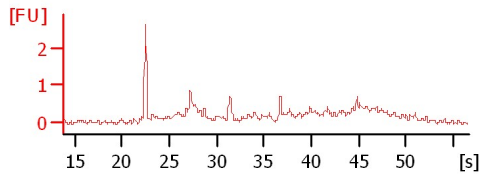
658
 T RIN N/A



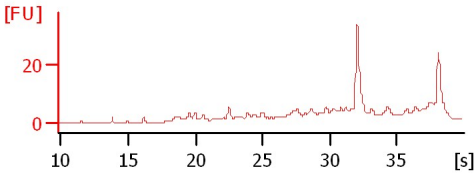
2 7/26
 T RIN: 2.50



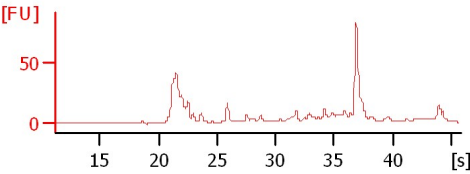
665 vmh
 T RIN: 2.40



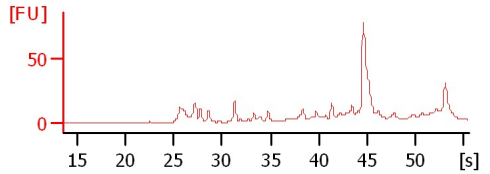
4487L3
 T->MIRVANA RIN N/A



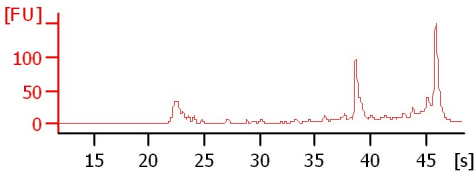
4477L2
 T->MIRVANA RIN N/A



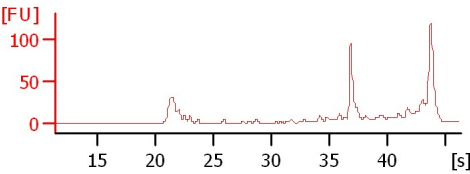
4477R2
 T->MIRVANA RIN: 3.60



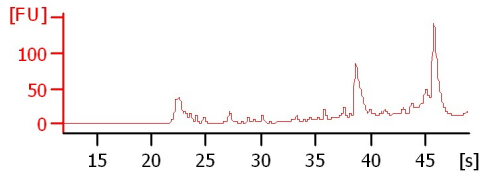
2346_4
 MIRVANA RIN: 5.60



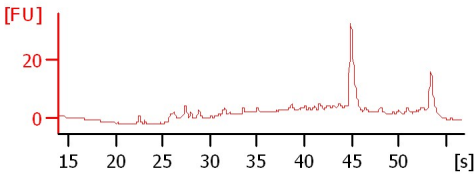
2346_3
 MIRVANA RIN: 5.50



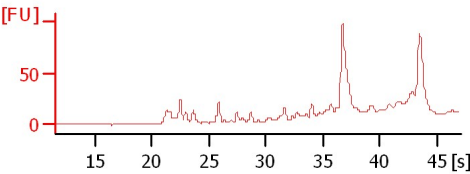
2346_7
 MIRVANA RIN: 2.40



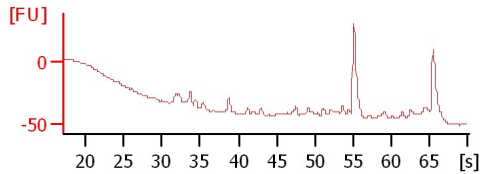
2327N
 T->MIRVANA RIN N/A



4489R1
 T->MIRVANA RIN: 5.40



4489L2
 T->MIRVANA RIN N/A



Assay Class: Eukaryote Total RNA Nano
 Data Path: C:\...ents and Settings\Bioanalyzer\2013-09-27\2013-09-27_005.xad

Created: 9/27/2013 4:25:13 PM
 Modified: 9/27/2013 5:08:14 PM

Electrophoresis File Run Summary (Chip Summary)

Sample Name	Sample Comment	Status	Result Label	Result Color
658	T	✓	RIN N/A	
2 7/26	T	✓	RIN: 2.50	
665 vmh	T	✓	RIN: 2.40	
4487L3	T->MIRVANA	✓	RIN N/A	
4477L2	T->MIRVANA	✓	RIN N/A	
4477R2	T->MIRVANA	✓	RIN: 3.60	
2346_4	MIRVANA	✓	RIN: 5.60	
2346_3	MIRVANA	✓	RIN: 5.50	
2346_7	MIRVANA	✓	RIN: 2.40	
2327N	T->MIRVANA	✓	RIN N/A	
4489R1	T->MIRVANA	✓	RIN: 5.40	
4489L2	T->MIRVANA	✓	RIN N/A	
Ladder		✓	All Other Samples	

Chip Lot #

Reagent Kit Lot #

Chip Comments :

trizol and then mirvana extraction ineffective.

Assay Class: Eukaryote Total RNA Nano
Data Path: C:\...ents and Settings\Bioanalyzer\2013-09-27\2013-09-27_005.xad

Created: 9/27/2013 4:25:13 PM
Modified: 9/27/2013 5:08:14 PM

Electrophoresis Assay Details

General Analysis Settings

Number of Available Sample and Ladder Wells (Max.) : 13
Minimum Visible Range [s] : 17
Maximum Visible Range [s] : 70
Start Analysis Time Range [s] : 19
End Analysis Time Range [s] : 69
Ladder Concentration [ng/μl] : 150
Lower Marker Concentration [ng/μl] : 0
Upper Marker Concentration [ng/μl] : 0
Used Lower Marker for Quantitation
Standard Curve Fit is Logarithmic
Show Data Aligned to Lower Marker

Integrator Settings

Integration Start Time [s] : 19
Integration End Time [s] : 69
Slope Threshold : 0.6
Height Threshold [FU] : 0.5
Area Threshold : 0.2
Width Threshold [s] : 0.5
Baseline Plateau [s] : 6

Filter Settings

Filter Width [s] : 0.5
Polynomial Order : 4

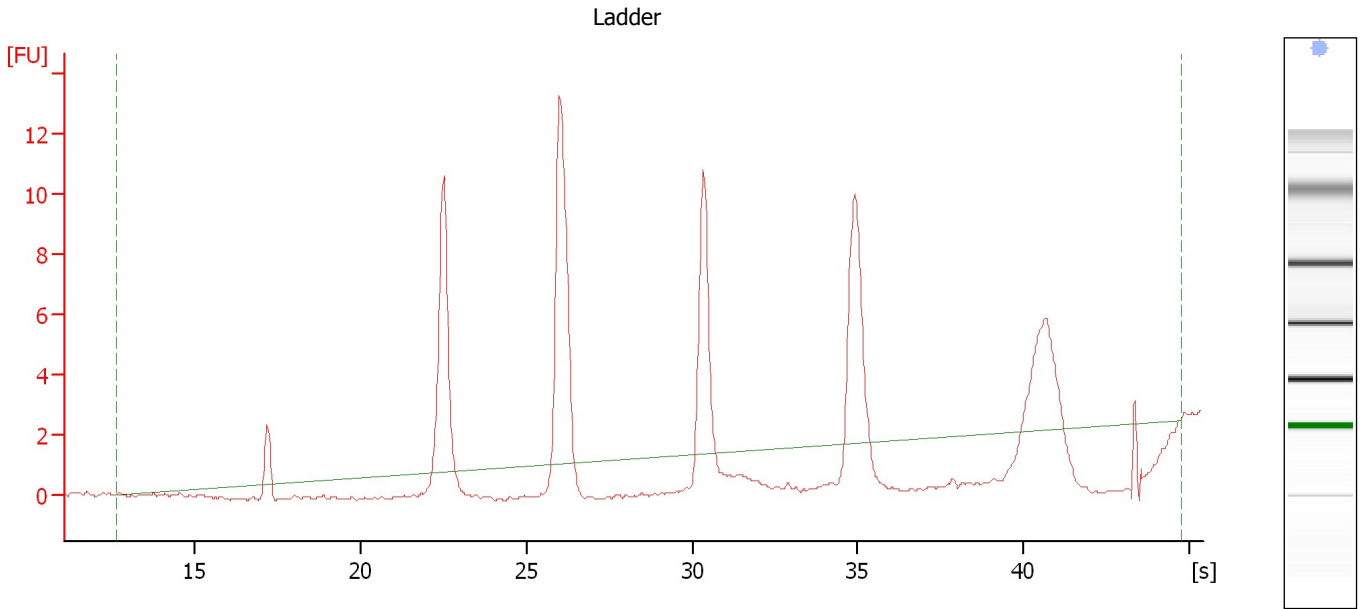
Ladder

Ladder Peak	Size
1	25
2	200
3	500
4	1000
5	2000
6	4000

Assay Class: Eukaryote Total RNA Nano
Data Path: C:\...ents and Settings\Bioanalyzer\2013-09-27\2013-09-27_005.xad

Created: 9/27/2013 4:25:13 PM
Modified: 9/27/2013 5:08:14 PM

Electropherogram Summary



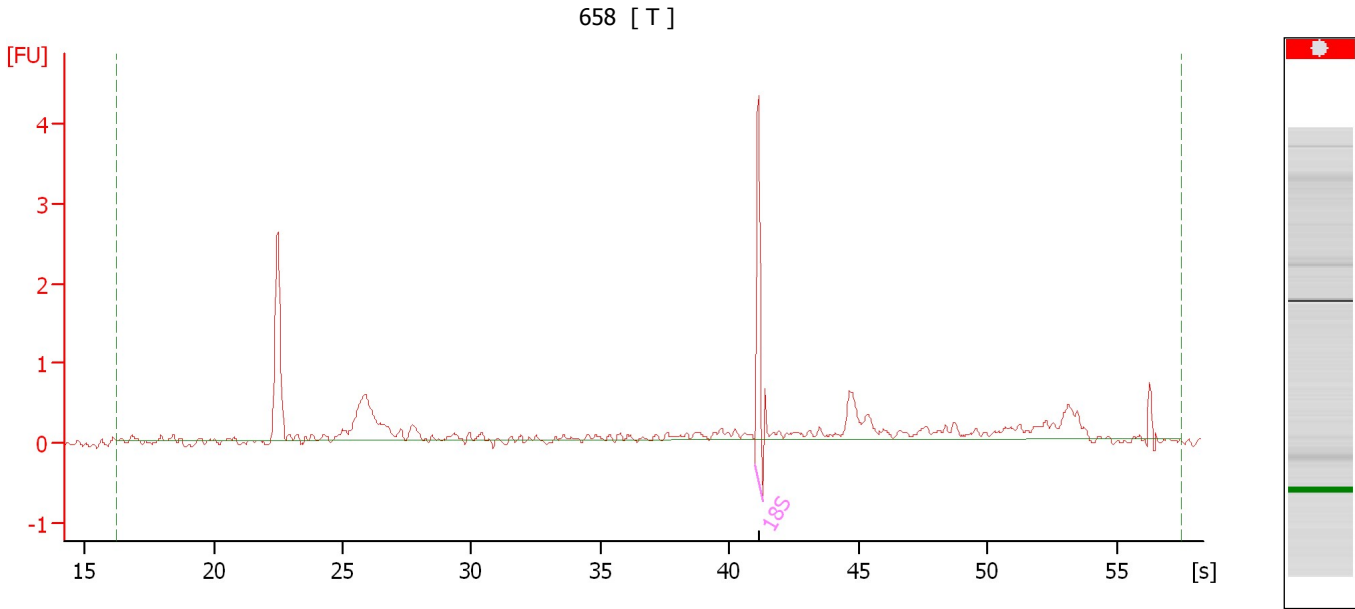
Overall Results for Ladder

RNA Area:	44.8	Result Flagging Color:	
RNA Concentration:	150 ng/ μ l	Result Flagging Label:	All Other Samples

Assay Class: Eukaryote Total RNA Nano
Data Path: C:\...ents and Settings\Bioanalyzer\2013-09-27\2013-09-27_005.xad

Created: 9/27/2013 4:25:13 PM
Modified: 9/27/2013 5:08:14 PM

Electropherogram Summary Continued ...



Overall Results for sample 1 : 658

RNA Area:	9.1	RNA Integrity Number (RIN):	N/A (B.02.08)
RNA Concentration:	31 ng/μl	Result Flagging Color:	
rRNA Ratio [28s / 18s]:	0.0	Result Flagging Label:	RIN N/A

Fragment table for sample 1 : 658

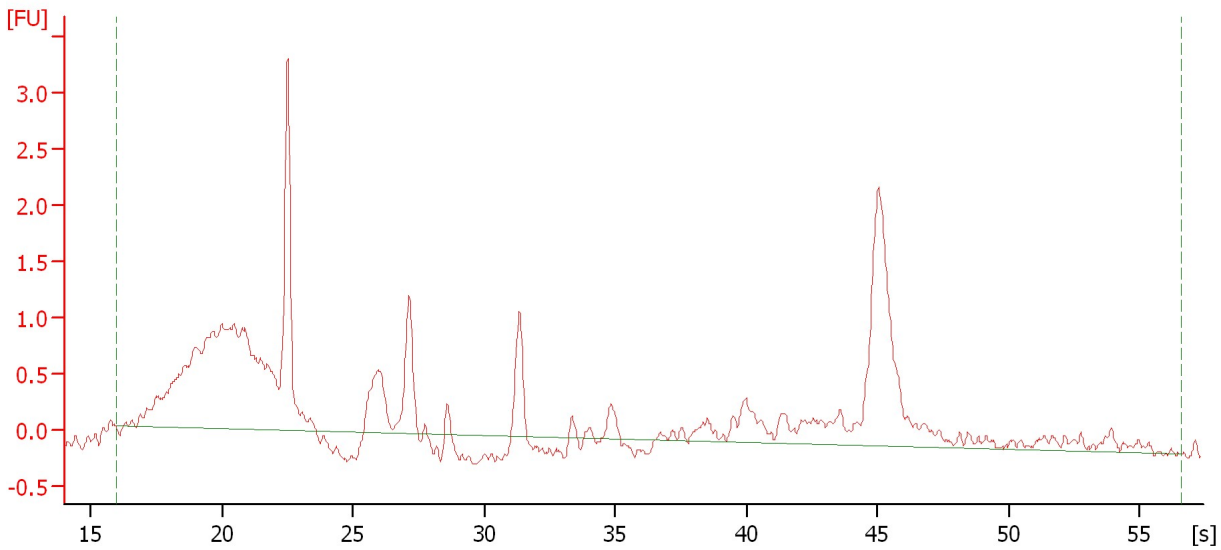
Name	Start Size [nt]	End Size [nt]	Area	% of total Area
18S	2,276	2,490	2.0	22.1

Assay Class: Eukaryote Total RNA Nano
Data Path: C:\...ents and Settings\Bioanalyzer\2013-09-27\2013-09-27_005.xad

Created: 9/27/2013 4:25:13 PM
Modified: 9/27/2013 5:08:14 PM

Electropherogram Summary Continued ...

2 7/26 [T]



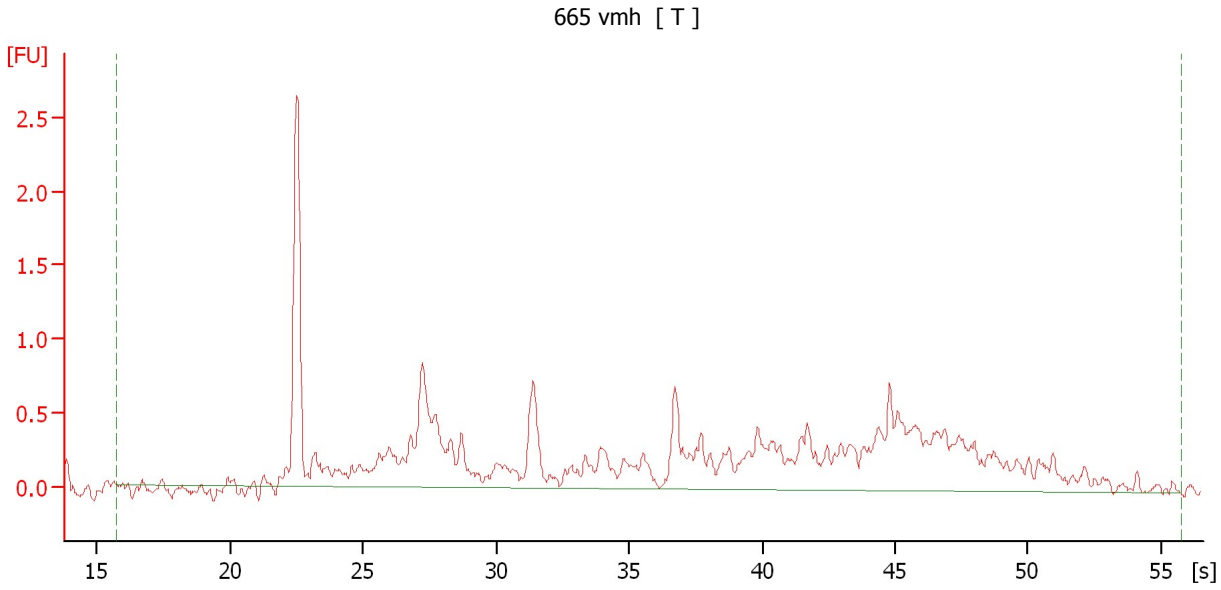
Overall Results for sample 2 : 2 7/26

RNA Area:	30.4	RNA Integrity Number (RIN):	2.5 (B.02.08)
RNA Concentration:	102 ng/μl	Result Flagging Color:	
rRNA Ratio [28s / 18s]:	0.0	Result Flagging Label:	RIN: 2.50

Assay Class: Eukaryote Total RNA Nano
Data Path: C:\...ents and Settings\Bioanalyzer\2013-09-27\2013-09-27_005.xad

Created: 9/27/2013 4:25:13 PM
Modified: 9/27/2013 5:08:14 PM

Electropherogram Summary Continued ...



Overall Results for sample 3 : 665 vmh

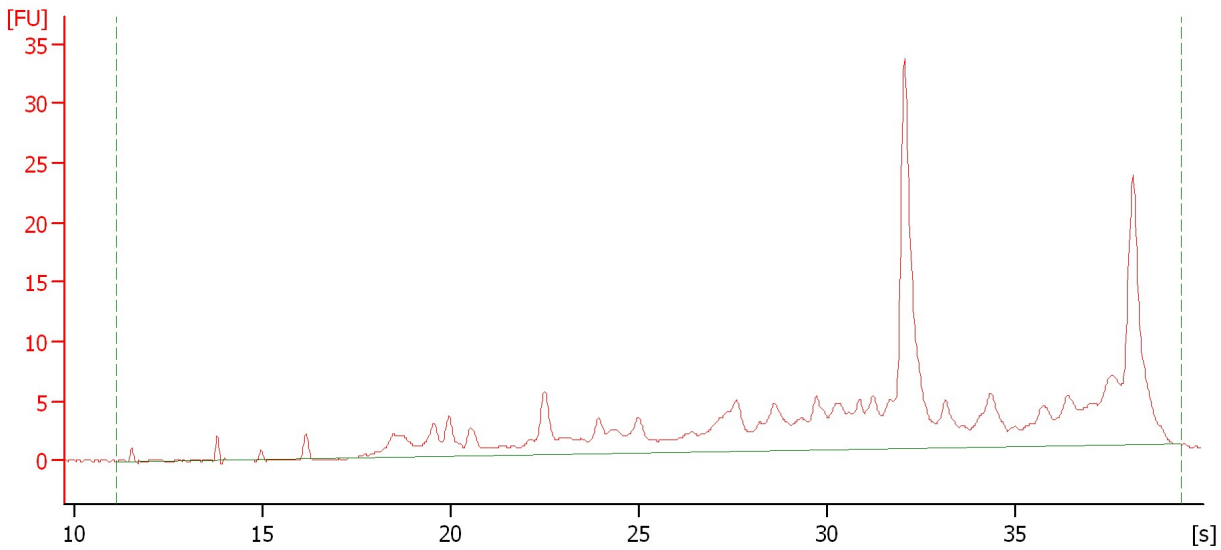
RNA Area:	18.6	RNA Integrity Number (RIN):	2.4 (B.02.08)
RNA Concentration:	62 ng/μl	Result Flagging Color:	
rRNA Ratio [28s / 18s]:	0.0	Result Flagging Label:	RIN: 2.40

Assay Class: Eukaryote Total RNA Nano
Data Path: C:\...ents and Settings\Bioanalyzer\2013-09-27\2013-09-27_005.xad


Created: 9/27/2013 4:25:13 PM
Modified: 9/27/2013 5:08:14 PM

Electropherogram Summary Continued ...

4487L3 [T->MIRVANA]



Overall Results for sample 4 : 4487L3

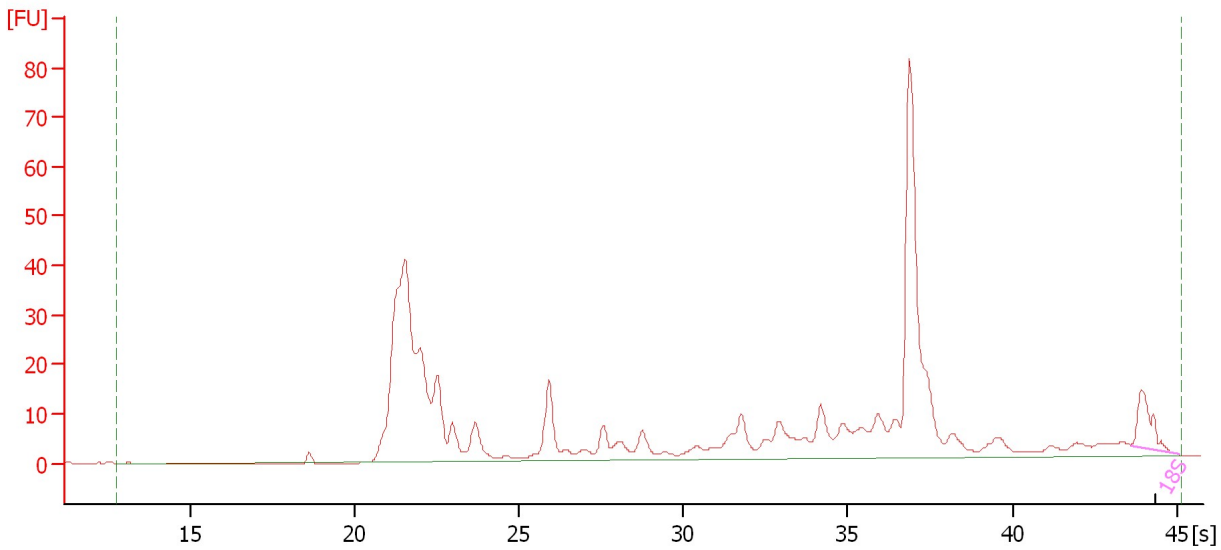
RNA Area:	216.3	RNA Integrity Number (RIN):	N/A (B.02.08)
RNA Concentration:	724 ng/μl	Result Flagging Color:	
rRNA Ratio [28s / 18s]:	0.0	Result Flagging Label:	RIN N/A

Assay Class: Eukaryote Total RNA Nano
Data Path: C:\...ents and Settings\Bioanalyzer\2013-09-27\2013-09-27_005.xad

Created: 9/27/2013 4:25:13 PM
Modified: 9/27/2013 5:08:14 PM

Electropherogram Summary Continued ...

4477L2 [T->MIRVANA]



Overall Results for sample 5 : 4477L2

RNA Area:	475.8	RNA Integrity Number (RIN):	N/A (B.02.08)
RNA Concentration:	1,592 ng/μl	Result Flagging Color:	
rRNA Ratio [28s / 18s]:	0.0	Result Flagging Label:	RIN N/A

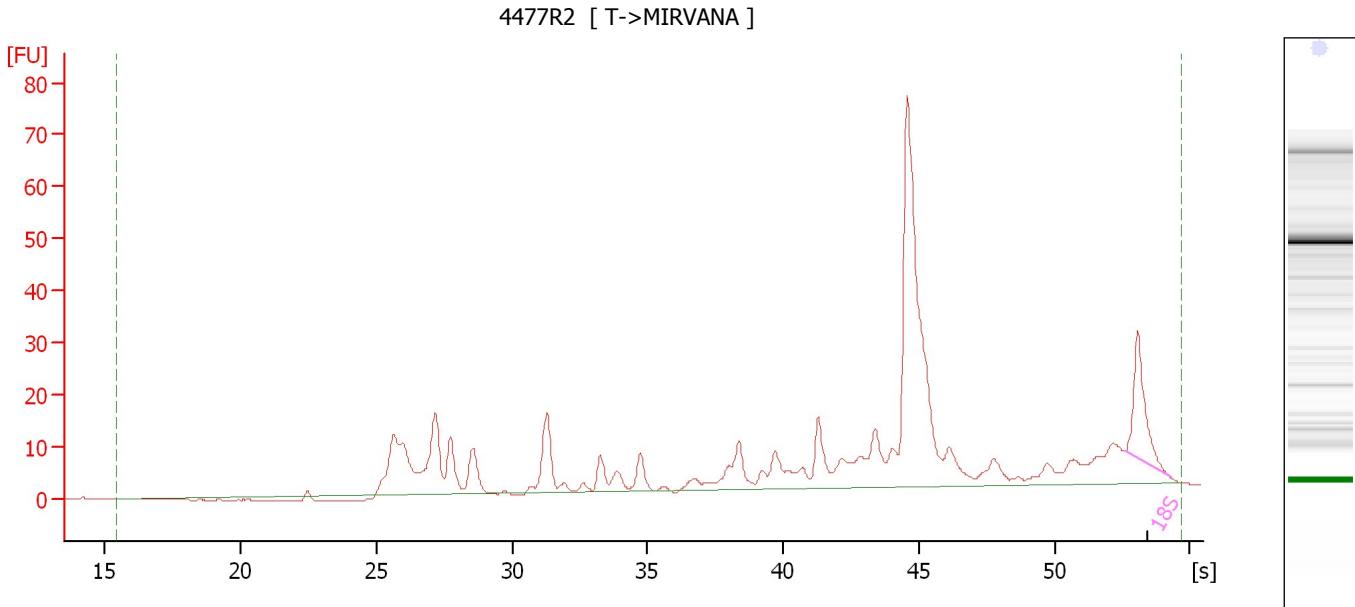
Fragment table for sample 5 : 4477L2

Name	Start Size [nt]	End Size [nt]	Area	% of total Area
18S	4,181	5,262	13.1	2.8

Assay Class: Eukaryote Total RNA Nano
 Data Path: C:\...ents and Settings\Bioanalyzer\2013-09-27\2013-09-27_005.xad

Created: 9/27/2013 4:25:13 PM
 Modified: 9/27/2013 5:08:14 PM

Electropherogram Summary Continued ...



Overall Results for sample 6 : 4477R2

RNA Area:	401.3	RNA Integrity Number (RIN):	3.6 (B.02.08, Anomaly Threshold(s) manually adapted)
RNA Concentration:	1,343 ng/μl	Result Flagging Color:	
rRNA Ratio [28s / 18s]:	0.0	Result Flagging Label:	RIN: 3.60

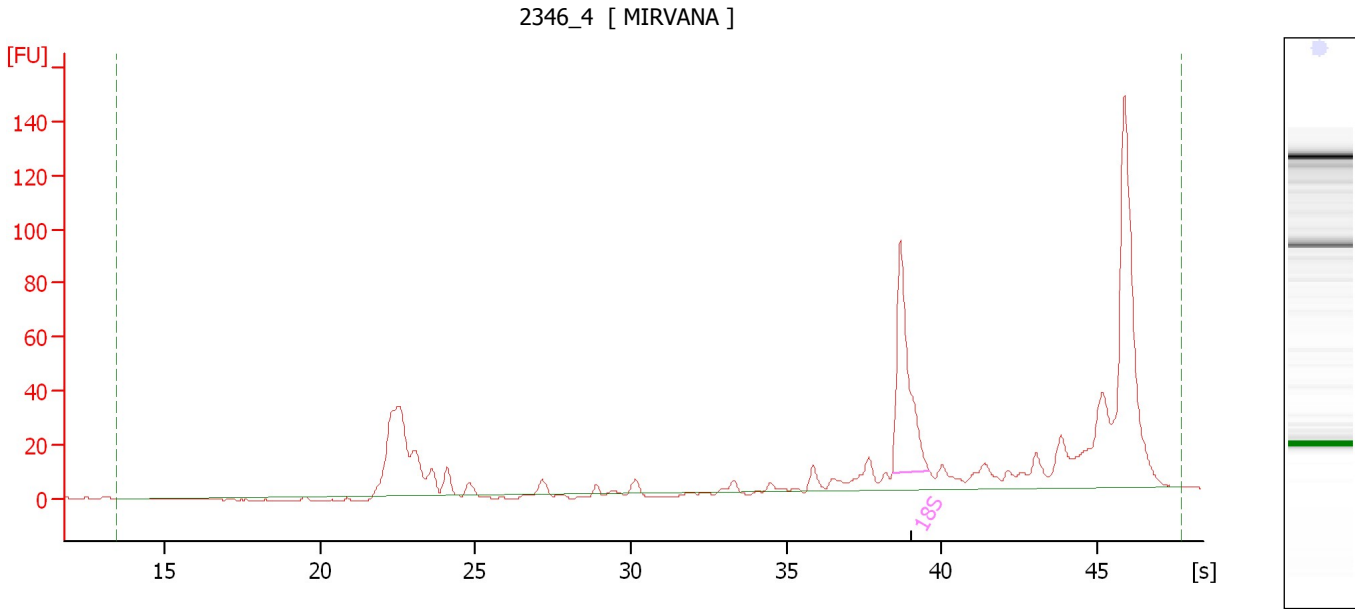
Fragment table for sample 6 : 4477R2

Name	Start Size [nt]	End Size [nt]	Area	% of total Area
18S	10,822	12,041	22.0	5.5

Assay Class: Eukaryote Total RNA Nano
Data Path: C:\...ents and Settings\Bioanalyzer\2013-09-27\2013-09-27_005.xad

Created: 9/27/2013 4:25:13 PM
Modified: 9/27/2013 5:08:14 PM

Electropherogram Summary Continued ...



Overall Results for sample 7 : 2346_4

RNA Area:	501.3	RNA Integrity Number (RIN):	5.6 (B.02.08, Anomaly Threshold(s) manually adapted)
RNA Concentration:	1,678 ng/μl	Result Flagging Color:	
rRNA Ratio [28s / 18s]:	0.0	Result Flagging Label:	RIN: 5.60

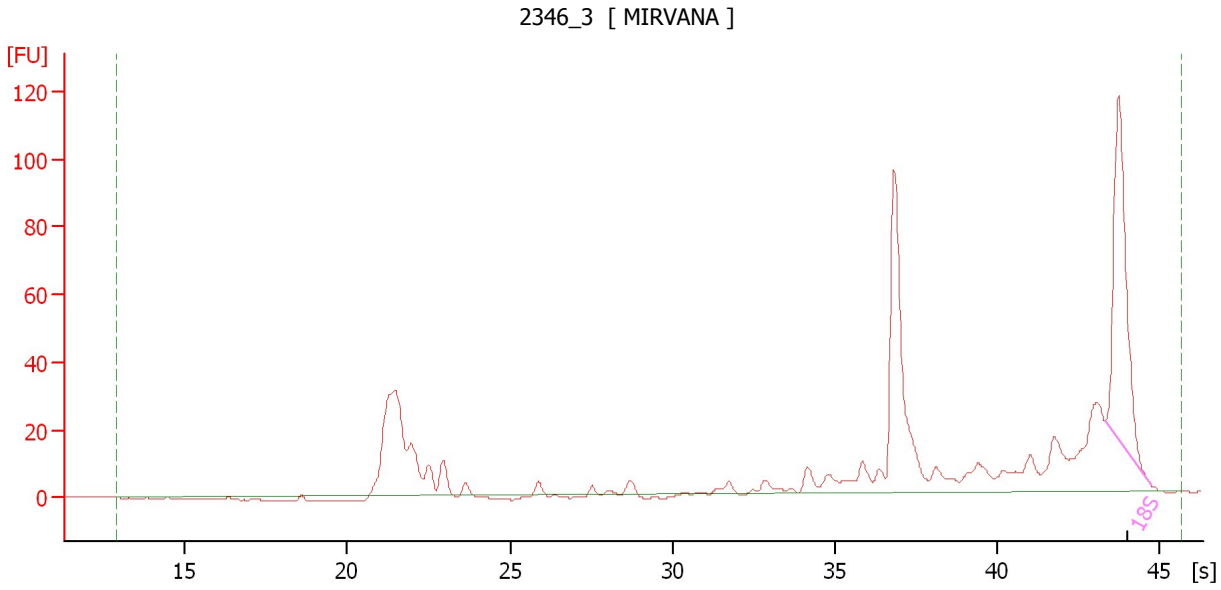
Fragment table for sample 7 : 2346_4

Name	Start Size [nt]	End Size [nt]	Area	% of total Area
18S	1,616	1,822	97.0	19.4

Assay Class: Eukaryote Total RNA Nano
Data Path: C:\...ents and Settings\Bioanalyzer\2013-09-27\2013-09-27_005.xad

Created: 9/27/2013 4:25:13 PM
Modified: 9/27/2013 5:08:14 PM

Electropherogram Summary Continued ...



Overall Results for sample 8 : 2346_3

RNA Area:	562.8	RNA Integrity Number (RIN):	5.5 (B.02.08, Anomaly Threshold(s) manually adapted)
RNA Concentration:	1,883 ng/μl	Result Flagging Color:	
rRNA Ratio [28s / 18s]:	0.0	Result Flagging Label:	RIN: 5.50

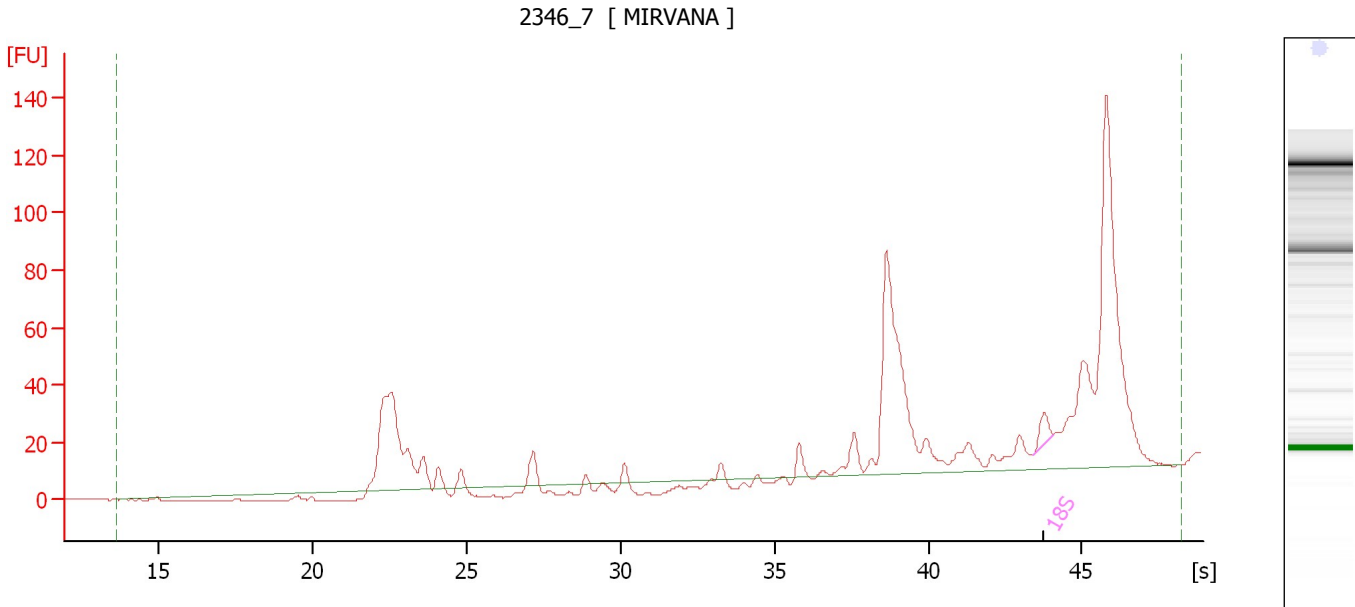
Fragment table for sample 8 : 2346_3

Name	Start Size [nt]	End Size [nt]	Area	% of total Area
18S	3,975	5,019	101.9	18.1


Assay Class: Eukaryote Total RNA Nano
Data Path: C:\...ents and Settings\Bioanalyzer\2013-09-27\2013-09-27_005.xad

Created: 9/27/2013 4:25:13 PM
Modified: 9/27/2013 5:08:14 PM

Electropherogram Summary Continued ...



Overall Results for sample 9 : 2346_7

RNA Area:	536.5	RNA Integrity Number (RIN):	2.4 (B.02.08, Anomaly Threshold(s) manually adapted)
RNA Concentration:	1,795 ng/μl	Result Flagging Color:	
rRNA Ratio [28s / 18s]:	0.0	Result Flagging Label:	RIN: 2.40

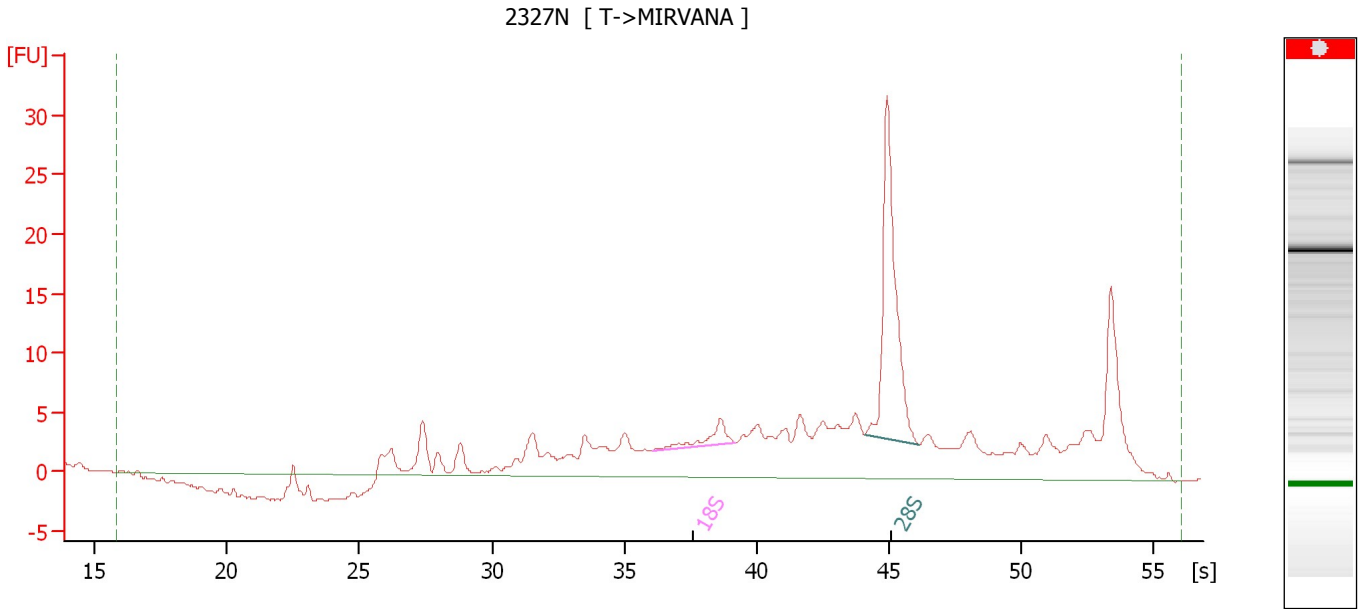
Fragment table for sample 9 : 2346_7

Name	Start Size [nt]	End Size [nt]	Area	% of total Area
18S	4,059	4,521	7.5	1.4

Assay Class: Eukaryote Total RNA Nano
Data Path: C:\...ents and Settings\Bioanalyzer\2013-09-27\2013-09-27_005.xad

Created: 9/27/2013 4:25:13 PM
Modified: 9/27/2013 5:08:14 PM

Electropherogram Summary Continued ...



Overall Results for sample 10 : 2327N

RNA Area:	235.1	RNA Integrity Number (RIN):	N/A (B.02.08)
RNA Concentration:	787 ng/μl	Result Flagging Color:	
rRNA Ratio [28s / 18s]:	8.4	Result Flagging Label:	RIN N/A

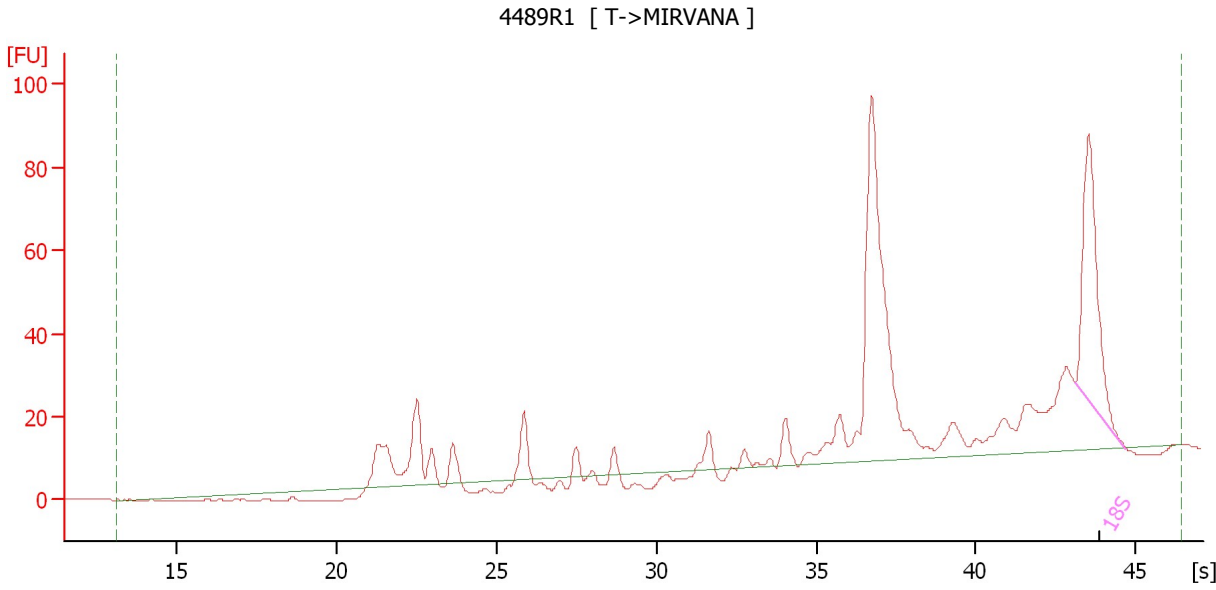
Fragment table for sample 10 : 2327N

Name	Start Size [nt]	End Size [nt]	Area	% of total Area
18S	1,205	1,750	4.2	1.8
28S	4,558	6,049	34.9	14.8

Assay Class: Eukaryote Total RNA Nano
Data Path: C:\...ents and Settings\Bioanalyzer\2013-09-27\2013-09-27_005.xad

Created: 9/27/2013 4:25:13 PM
Modified: 9/27/2013 5:08:14 PM

Electropherogram Summary Continued ...



Overall Results for sample 11 : 4489R1

RNA Area:	461.6	RNA Integrity Number (RIN):	5.4 (B.02.08, Anomaly Threshold(s) manually adapted)
RNA Concentration:	1,545 ng/μl	Result Flagging Color:	
rRNA Ratio [28s / 18s]:	0.0	Result Flagging Label:	RIN: 5.40

Fragment table for sample 11 : 4489R1

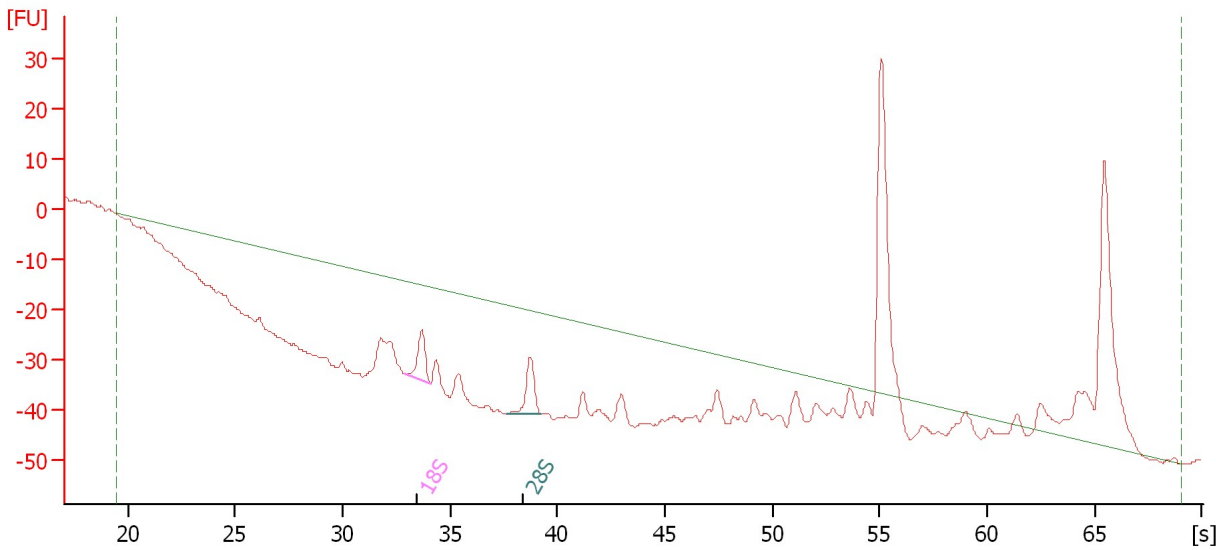
Name	Start Size [nt]	End Size [nt]	Area	% of total Area
18S	3,806	4,991	74.3	16.1

Assay Class: Eukaryote Total RNA Nano
 Data Path: C:\...ents and Settings\Bioanalyzer\2013-09-27\2013-09-27_005.xad

Created: 9/27/2013 4:25:13 PM
 Modified: 9/27/2013 5:08:14 PM

Electropherogram Summary Continued ...

4489L2 [T->MIRVANA]



Overall Results for sample 12 : 4489L2

RNA Area:	144.7	RNA Integrity Number (RIN):	N/A (B.02.08)
RNA Concentration:	484 ng/μl	Result Flagging Color:	
rRNA Ratio [28s / 18s]:	1.0	Result Flagging Label:	RIN N/A

Fragment table for sample 12 : 4489L2

Name	Start Size [nt]	End Size [nt]	Area	% of total Area
18S	775	908	13.1	9.0
28S	1,481	1,760	12.9	8.9

Assay Class: Eukaryote Total RNA Nano
Data Path: C:\...ents and Settings\Bioanalyzer\2013-09-27\2013-09-27_005.xad

Created: 9/27/2013 4:25:13 PM
Modified: 9/27/2013 5:08:14 PM

Gel Image

