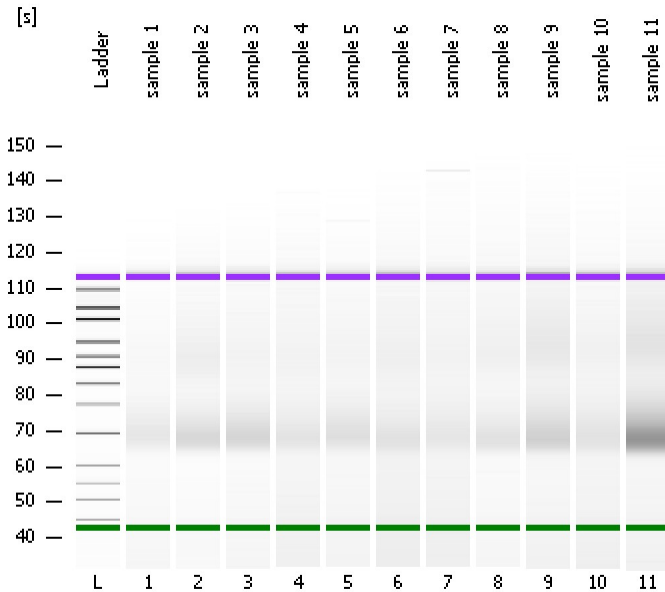


Assay Class: High Sensitivity DNA Assay
Data Path: C:\...ents and Settings\Bioanalyzer\2013-09-30\2013-09-30_003.xad

Created: 9/30/2013 11:54:19 AM
Modified: 9/30/2013 12:37:57 PM

Electrophoresis File Run Summary



Instrument Information:

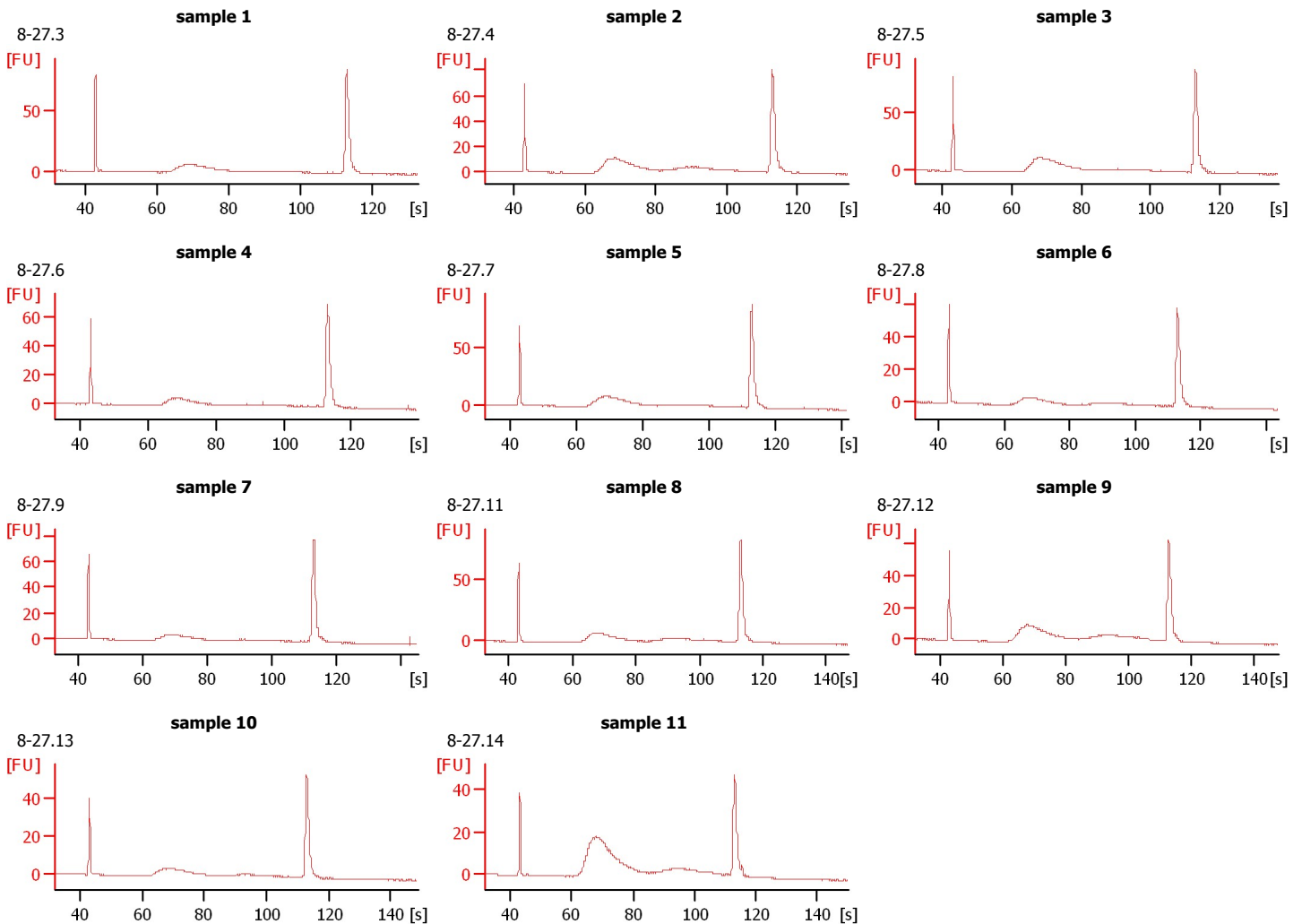
Instrument Name: DE13701086 Firmware: C.01.069
Serial#: DE13701086 Type: G2938B

Assay Information:

Assay Origin Path: C:\Program Files\Agilent\2100 bioanalyzer\2100 expert\assays\dsDNA\High Sensitivity DNA.xsy
Assay Class: High Sensitivity DNA Assay
Version: 1.03
Assay Comments: Copyright © 2003-2010 Agilent Technologies

Chip Information:

Chip Lot #:
Reagent Kit Lot #:
Chip Comments:



Assay Class: High Sensitivity DNA Assay
Data Path: C:\...ents and Settings\Bioanalyzer\2013-09-30\2013-09-30_003.xad

Created: 9/30/2013 11:54:19 AM
Modified: 9/30/2013 12:37:57 PM

Electrophoresis File Run Summary (Chip Summary)

Sample Name	Sample Comment	Rest. Digest	Status	Observation	Result Label	Result Color
sample 1	8-27.3	<input type="checkbox"/>	✓			
sample 2	8-27.4	<input type="checkbox"/>	✓			
sample 3	8-27.5	<input type="checkbox"/>	✓			
sample 4	8-27.6	<input type="checkbox"/>	✓			
sample 5	8-27.7	<input type="checkbox"/>	✓			
sample 6	8-27.8	<input type="checkbox"/>	✓			
sample 7	8-27.9	<input type="checkbox"/>	✓			
sample 8	8-27.11	<input type="checkbox"/>	✓			
sample 9	8-27.12	<input type="checkbox"/>	✓			
sample 10	8-27.13	<input type="checkbox"/>	✓			
sample 11	8-27.14	<input type="checkbox"/>	✓			
Ladder		<input type="checkbox"/>	✓			

Chip Lot #

Reagent Kit Lot #

Chip Comments :

Assay Class: High Sensitivity DNA Assay
Data Path: C:\...ents and Settings\Bioanalyzer\2013-09-30\2013-09-30_003.xad

Created: 9/30/2013 11:54:19 AM
Modified: 9/30/2013 12:37:57 PM

Electrophoresis Assay Details

General Analysis Settings

Number of Available Sample and Ladder Wells (Max.) : 12
Minimum Visible Range [s] : 32
Maximum Visible Range [s] : 138
Start Analysis Time Range [s] : 33
End Analysis Time Range [s] : 137.5
Ladder Concentration [pg/μl] : 1950
Uses Standard Area for Ladder Fragments
Lower Marker Concentration [pg/μl] : 125
Upper Marker Concentration [pg/μl] : 75
Used Upper Marker for Quantitation
Standard Curve Fit is Point to Point
Show Data Aligned to Lower and Upper Marker

Integrator Settings

Integration Start Time [s] : 33.05
Integration End Time [s] : 137
Slope Threshold : 0.8
Height Threshold [FU] : 5
Area Threshold : 0.1
Width Threshold [s] : 0.6
Baseline Plateau [s] : 0.5

Filter Settings

Filter Width [s] : 0.5
Polynomial Order : 4

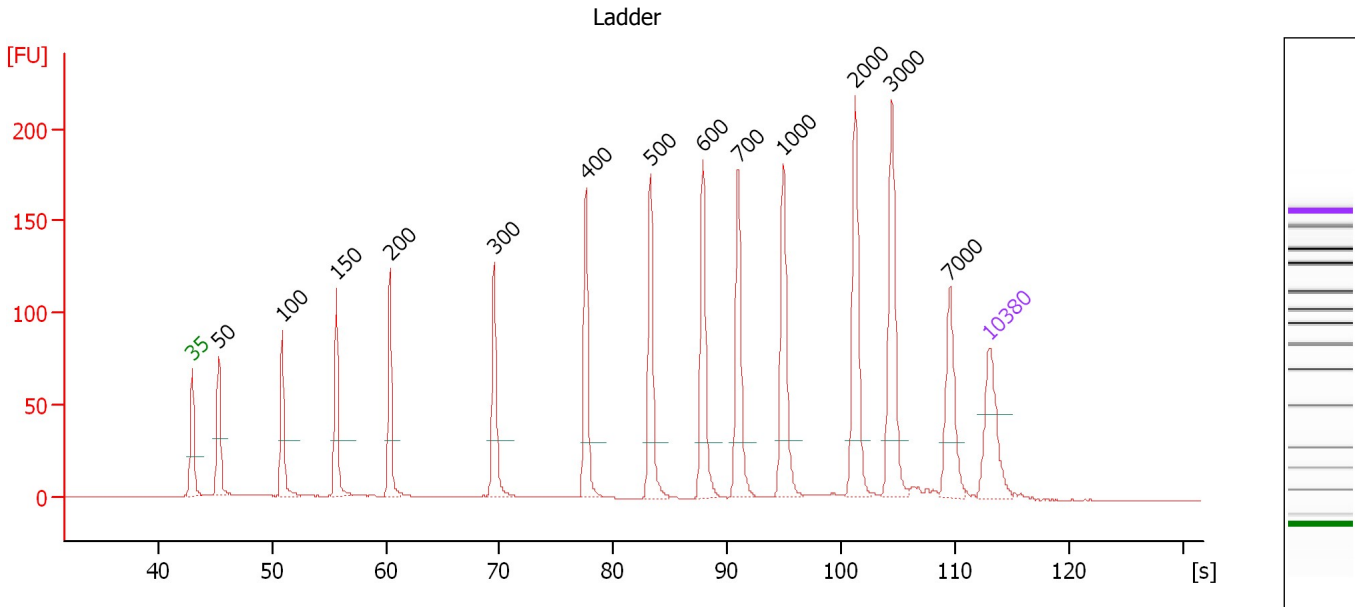
Ladder

Ladder Peak	Size	Area
1	35	160
2	50	210
3	100	208
4	150	221
5	200	242
6	300	270
7	400	305
8	500	306
9	600	336
10	700	321
11	1000	366
12	2000	413
13	3000	411
14	7000	400
15	10380	214

Assay Class: High Sensitivity DNA Assay
 Data Path: C:\...ents and Settings\Bioanalyzer\2013-09-30\2013-09-30_003.xad

Created: 9/30/2013 11:54:19 AM
 Modified: 9/30/2013 12:37:57 PM

Electropherogram Summary



Overall Results for Ladder

Noise: 0.2

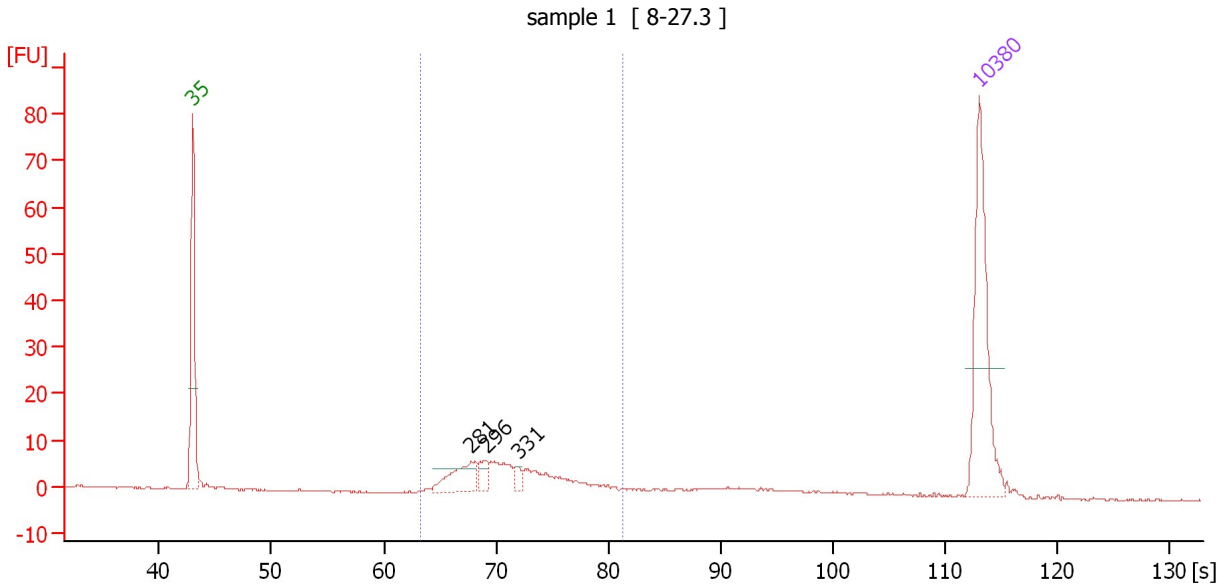
Peak table for Ladder

Peak	Size [bp]	Conc. [pg/μl]	Molarity [pmol/l]	Observations
1	35	125.00	5,411.3	Lower Marker
2	50	150.00	4,545.5	Ladder Peak
3	100	150.00	2,272.7	Ladder Peak
4	150	150.00	1,515.2	Ladder Peak
5	200	150.00	1,136.4	Ladder Peak
6	300	150.00	757.6	Ladder Peak
7	400	150.00	568.2	Ladder Peak
8	500	150.00	454.5	Ladder Peak
9	600	150.00	378.8	Ladder Peak
10	700	150.00	324.7	Ladder Peak
11	1,000	150.00	227.3	Ladder Peak
12	2,000	150.00	113.6	Ladder Peak
13	3,000	150.00	75.8	Ladder Peak
14	7,000	150.00	32.5	Ladder Peak
15	10,380	75.00	10.9	Upper Marker

Assay Class: High Sensitivity DNA Assay
 Data Path: C:\...ents and Settings\Bioanalyzer\2013-09-30\2013-09-30_003.xad

Created: 9/30/2013 11:54:19 AM
 Modified: 9/30/2013 12:37:57 PM

Electropherogram Summary Continued ...



Overall Results for sample 1 : sample 1

Number of peaks found: 3 Corr. Area 1: 91.9
 Noise: 0.2

Peak table for sample 1 : sample 1

Peak	Size [bp]	Conc. [pg/μl]	Molarity [pmol/l]	Observations
1	35	125.00	5,411.3	Lower Marker
2	281	33.30	179.3	
3	296	10.37	53.1	
4	331	6.11	28.0	
5	10,380	75.00	10.9	Upper Marker

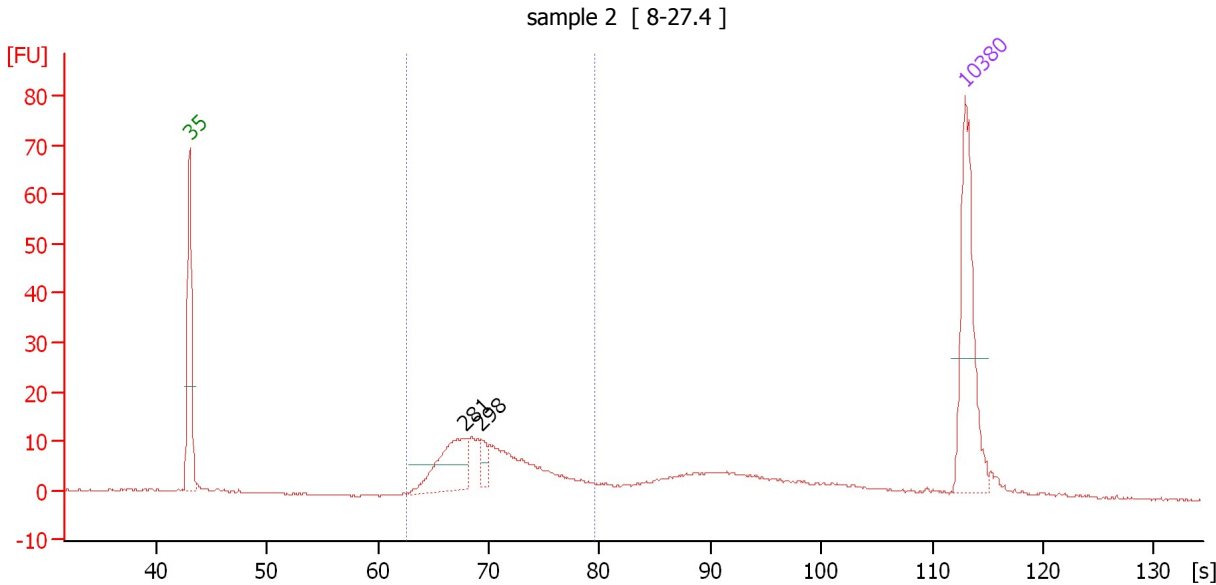
Region table for sample 1 : sample 1

From [s]	To [s]	Average Size [bp]	Molarity [pmol/l]	Conc. [pg/μl]	Corr. Area % of Total	Size distribution in CV [%]	Color	
63.27	81.21	325	548.6	114.30	91.9	73	15.2	■

Assay Class: High Sensitivity DNA Assay
 Data Path: C:\...ents and Settings\Bioanalyzer\2013-09-30\2013-09-30_003.xad

Created: 9/30/2013 11:54:19 AM
 Modified: 9/30/2013 12:37:57 PM

Electropherogram Summary Continued ...



Overall Results for sample 2 : sample 2

Number of peaks found: 2 Corr. Area 1: 156.6
 Noise: 0.2

Peak table for sample 2 : sample 2

Peak	Size [bp]	Conc. [pg/μl]	Molarity [pmol/l]	Observations
1	35	125.00	5,411.3	Lower Marker
2	281	60.90	328.6	
3	298	10.48	53.2	
4	10,380	75.00	10.9	Upper Marker

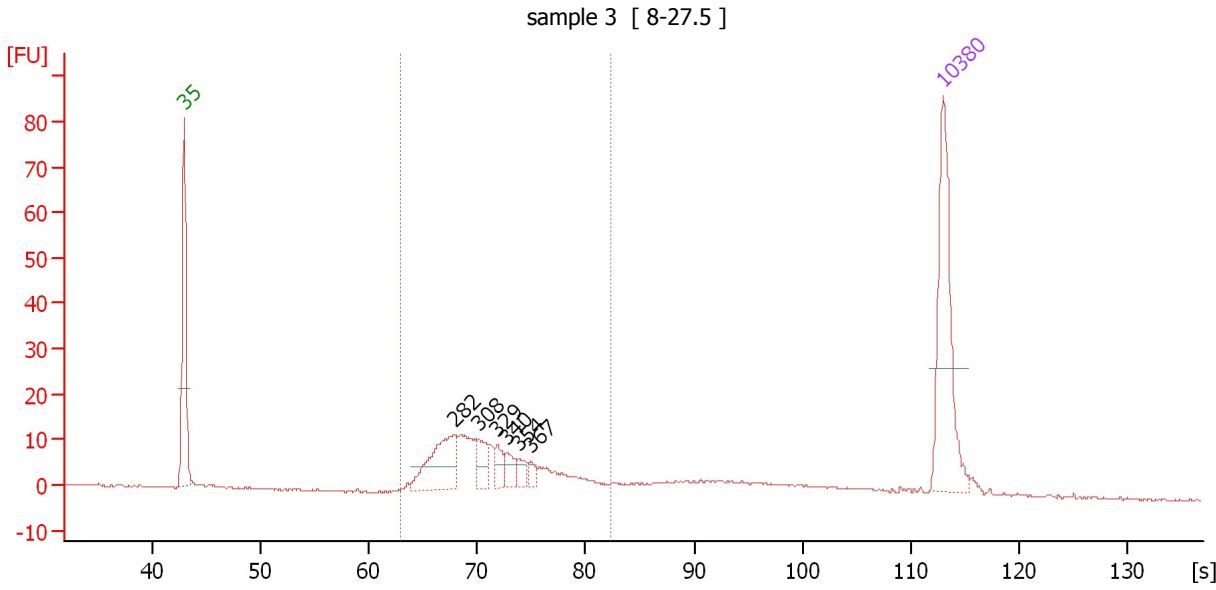
Region table for sample 2 : sample 2

From [s]	To [s]	Average Size [bp]	Molarity [pmol/l]	Conc. [pg/μl]	Corr. Area % of Total	Size distribution in CV [%]	Color
62.57	79.48	313	972.3	195.75	156.6 55	14.6	■

Assay Class: High Sensitivity DNA Assay
 Data Path: C:\...ents and Settings\Bioanalyzer\2013-09-30\2013-09-30_003.xad

Created: 9/30/2013 11:54:19 AM
 Modified: 9/30/2013 12:37:57 PM

Electropherogram Summary Continued ...



Overall Results for sample 3 : sample 3

Number of peaks found: 6 Corr. Area 1: 174.5
 Noise: 0.2

Peak table for sample 3 : sample 3

Peak	Size [bp]	Conc. [pg/μl]	Molarity [pmol/l]	Observations
1	35	125.00	5,411.3	Lower Marker
2	282	59.54	319.4	
3	308	18.33	90.1	
4	329	11.82	54.4	
5	340	11.71	52.2	
6	354	7.79	33.3	
7	367	5.33	22.0	
8	10,380	75.00	10.9	Upper Marker

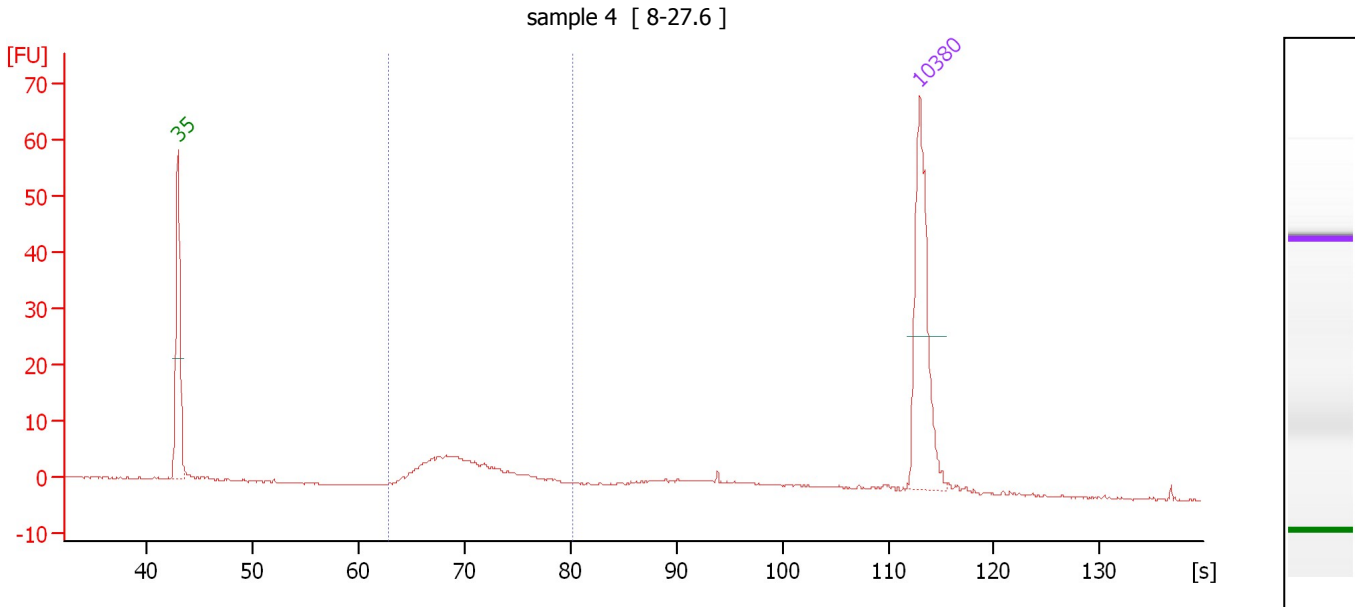
Region table for sample 3 : sample 3

From [s]	To [s]	Average Size [bp]	Molarity [pmol/l]	Conc. [pg/μl]	Corr. Area	% of Total	Size distribution in CV [%]	Color
62.94	82.25	324	955.5	197.51	174.5	70	16.6	Blue

Assay Class: High Sensitivity DNA Assay
 Data Path: C:\...ents and Settings\Bioanalyzer\2013-09-30\2013-09-30_003.xad

Created: 9/30/2013 11:54:19 AM
 Modified: 9/30/2013 12:37:57 PM

Electropherogram Summary Continued ...



Overall Results for sample 4 : sample 4

Number of peaks found: 0 Corr. Area 1: 62.8
 Noise: 0.2

Peak table for sample 4 : sample 4

Peak	Size [bp]	Conc. [pg/μl]	Molarity [pmol/l]	Observations
1	35	125.00	5,411.3	Lower Marker
2	10,380	75.00	10.9	Upper Marker

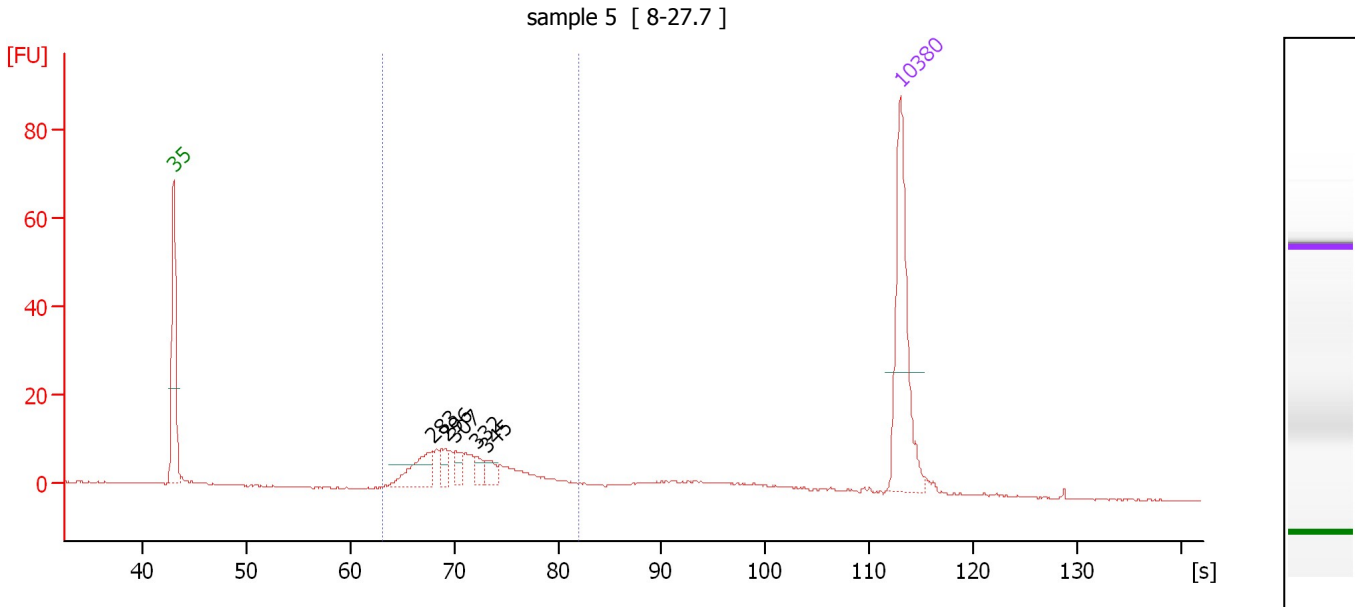
Region table for sample 4 : sample 4

From [s]	To [s]	Average Size [bp]	Molarity [pmol/l]	Conc. [pg/μl]	Corr. Area	% of Total	Size distribution in CV [%]	Color
62.84	80.16	315	429.0	87.05	62.8	60	14.4	Blue

Assay Class: High Sensitivity DNA Assay
 Data Path: C:\...ents and Settings\Bioanalyzer\2013-09-30\2013-09-30_003.xad

Created: 9/30/2013 11:54:19 AM
 Modified: 9/30/2013 12:37:57 PM

Electropherogram Summary Continued ...



Overall Results for sample 5 : sample 5

Number of peaks found: 5 Corr. Area 1: 130.7
 Noise: 0.2

Peak table for sample 5 : sample 5

Peak	Size [bp]	Conc. [pg/μl]	Molarity [pmol/l]	Observations
1	35	125.00	5,411.3	Lower Marker
2	283	34.17	183.1	
3	296	11.12	56.8	
4	307	11.27	55.6	
5	332	8.34	38.1	
6	345	9.20	40.4	
7	10,380	75.00	10.9	Upper Marker

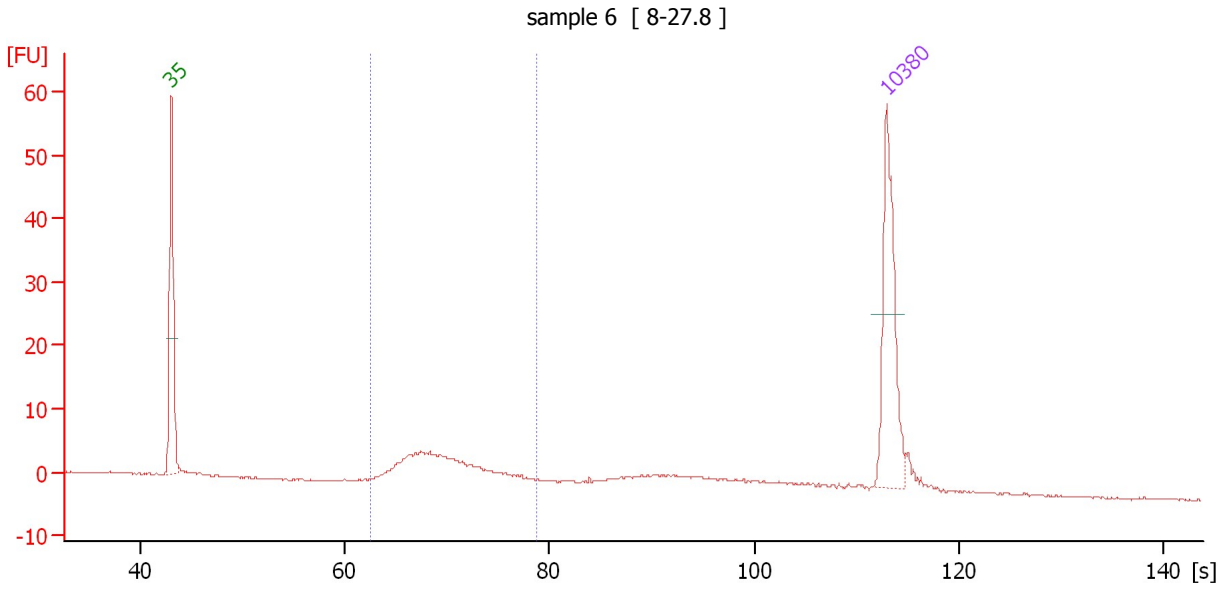
Region table for sample 5 : sample 5

From [s]	To [s]	Average Size [bp]	Molarity [pmol/l]	Conc. [pg/μl]	Corr. Area % of Total	Size distribution in CV [%]	Color
63.09	81.92	329	723.4	151.83	130.7 65	16.3	Blue

Assay Class: High Sensitivity DNA Assay
 Data Path: C:\...ents and Settings\Bioanalyzer\2013-09-30\2013-09-30_003.xad

Created: 9/30/2013 11:54:19 AM
 Modified: 9/30/2013 12:37:57 PM

Electropherogram Summary Continued ...



Overall Results for sample 6 : sample 6

Number of peaks found: 0 Corr. Area 1: 56.8
 Noise: 0.1

Peak table for sample 6 : sample 6

Peak	Size [bp]	Conc. [pg/μl]	Molarity [pmol/l]	Observations
1	35	125.00	5,411.3	Lower Marker
2	10,380	75.00	10.9	Upper Marker

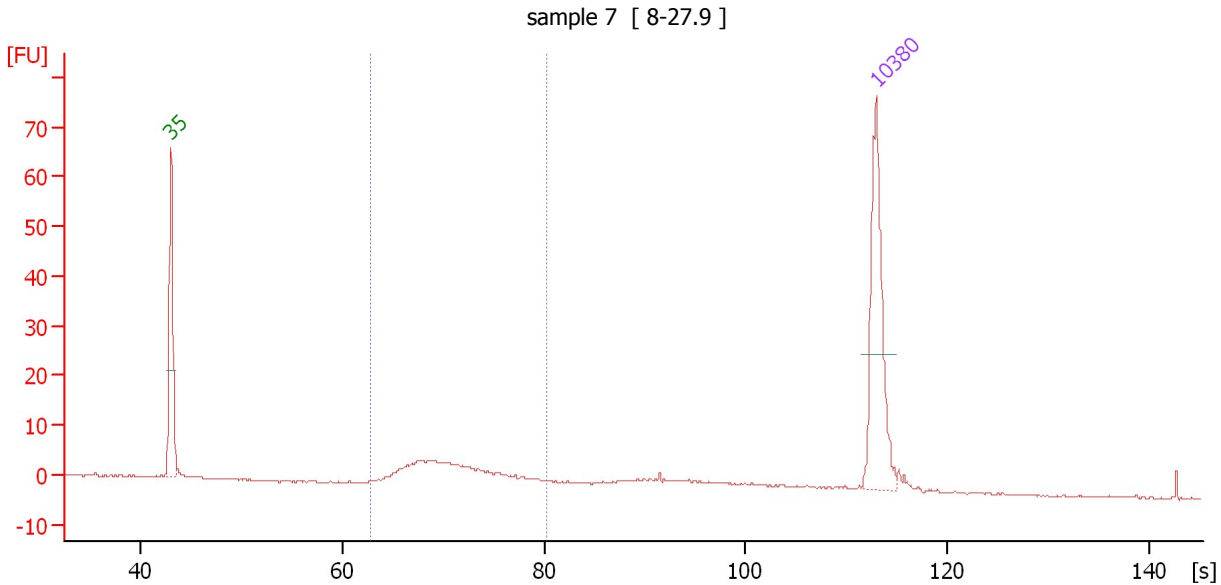
Region table for sample 6 : sample 6

From [s]	To [s]	Average Size [bp]	Molarity [pmol/l]	Conc. [pg/μl]	Corr. Area	% of Total	Size distribution in CV [%]	Color
62.48	78.67	306	507.2	100.10	56.8	50	14.0	Blue

Assay Class: High Sensitivity DNA Assay
 Data Path: C:\...ents and Settings\Bioanalyzer\2013-09-30\2013-09-30_003.xad

Created: 9/30/2013 11:54:19 AM
 Modified: 9/30/2013 12:37:57 PM

Electropherogram Summary Continued ...



Overall Results for sample 7 : sample 7

Number of peaks found: 0 Corr. Area 1: 59.8
 Noise: 0.2

Peak table for sample 7 : sample 7

Peak	Size [bp]	Conc. [pg/μl]	Molarity [pmol/l]	Observations
1	35	125.00	5,411.3	Lower Marker
2	10,380	75.00	10.9	Upper Marker

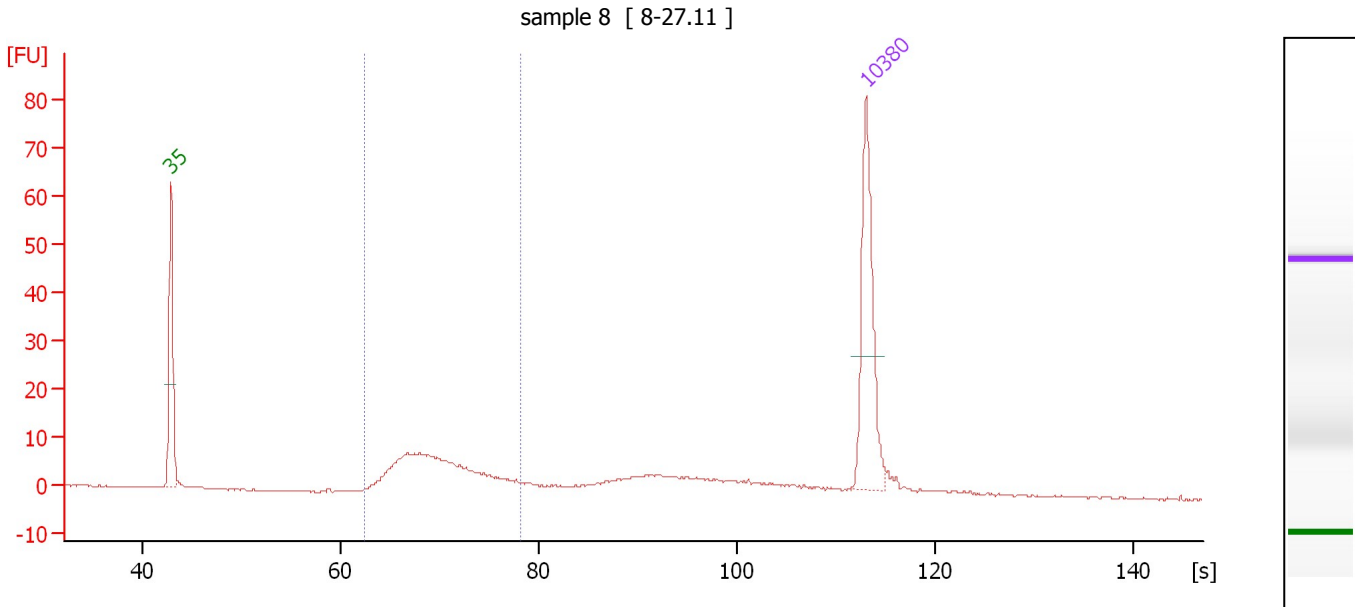
Region table for sample 7 : sample 7

From [s]	To [s]	Average Size [bp]	Molarity [pmol/l]	Conc. [pg/μl]	Corr. Area	% of Total	Size distribution in CV [%]	Color
62.78	80.21	321	388.2	79.89	59.8	57	14.8	Blue

Assay Class: High Sensitivity DNA Assay
 Data Path: C:\...ents and Settings\Bioanalyzer\2013-09-30\2013-09-30_003.xad

Created: 9/30/2013 11:54:19 AM
 Modified: 9/30/2013 12:37:57 PM

Electropherogram Summary Continued ...



Overall Results for sample 8 : sample 8

Number of peaks found: 0 Corr. Area 1: 94.5
 Noise: 0.1

Peak table for sample 8 : sample 8

Peak	Size [bp]	Conc. [pg/μl]	Molarity [pmol/l]	Observations
1	35	125.00	5,411.3	Lower Marker
2	10,380	75.00	10.9	Upper Marker

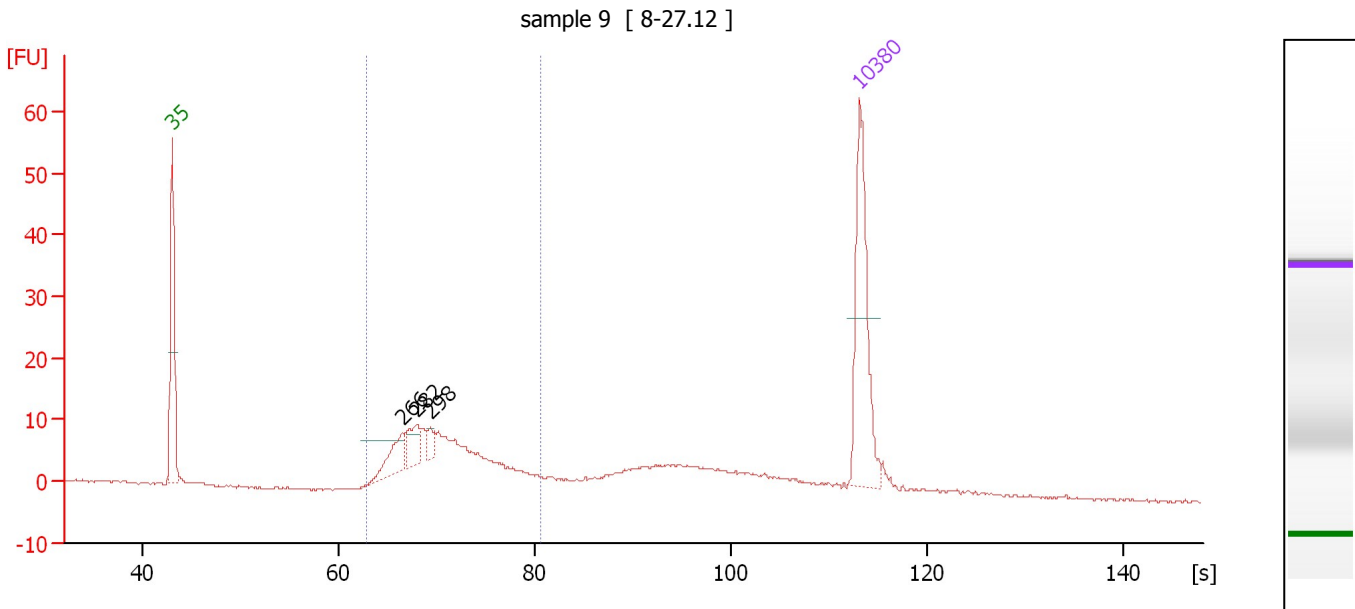
Region table for sample 8 : sample 8

From [s]	To [s]	Average Size [bp]	Molarity [pmol/l]	Conc. [pg/μl]	Corr. Area % of Total	Size distribution in CV [%]	Color	
62.47	78.14	307	628.9	124.40	94.5	52	13.8	Blue

Assay Class: High Sensitivity DNA Assay
 Data Path: C:\...ents and Settings\Bioanalyzer\2013-09-30\2013-09-30_003.xad

Created: 9/30/2013 11:54:19 AM
 Modified: 9/30/2013 12:37:57 PM

Electropherogram Summary Continued ...



Overall Results for sample 9 : sample 9

Number of peaks found: 3 Corr. Area 1: 134.5
 Noise: 0.2

Peak table for sample 9 : sample 9

Peak	Size [bp]	Conc. [pg/μl]	Molarity [pmol/l]	Observations
1	35	125.00	5,411.3	Lower Marker
2	266	28.73	163.5	
3	282	21.32	114.4	
4	298	7.59	38.6	
5	10,380	75.00	10.9	Upper Marker

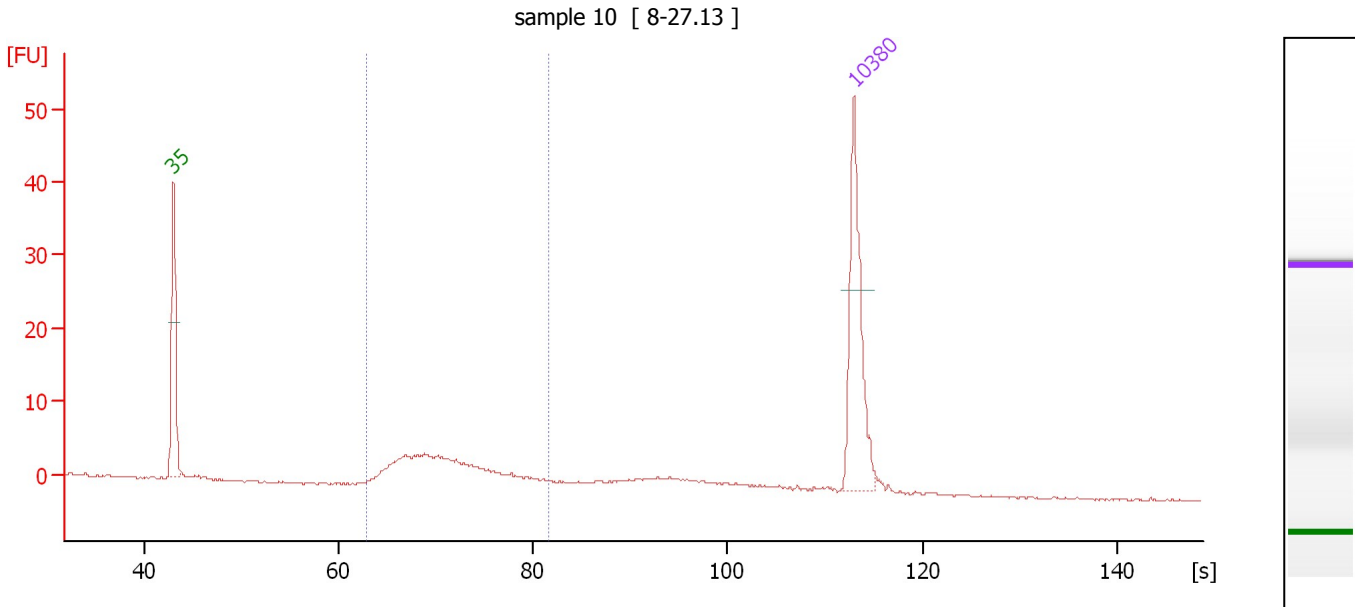
Region table for sample 9 : sample 9

From [s]	To [s]	Average Size [bp]	Molarity [pmol/l]	Conc. [pg/μl]	Corr. Area % of Total	Size distribution in CV [%]	Color
62.79	80.48	318	1,070.3	217.86	134.5 57	15.7	■

Assay Class: High Sensitivity DNA Assay
 Data Path: C:\...ents and Settings\Bioanalyzer\2013-09-30\2013-09-30_003.xad

Created: 9/30/2013 11:54:19 AM
 Modified: 9/30/2013 12:37:57 PM

Electropherogram Summary Continued ...



Overall Results for sample 10 : sample 10

Number of peaks found: 0 Corr. Area 1: 55.8
 Noise: 0.2

Peak table for sample 10 : sample 10

Peak	Size [bp]	Conc. [pg/μl]	Molarity [pmol/l]	Observations
1	35	125.00	5,411.3	Lower Marker
2	10,380	75.00	10.9	Upper Marker

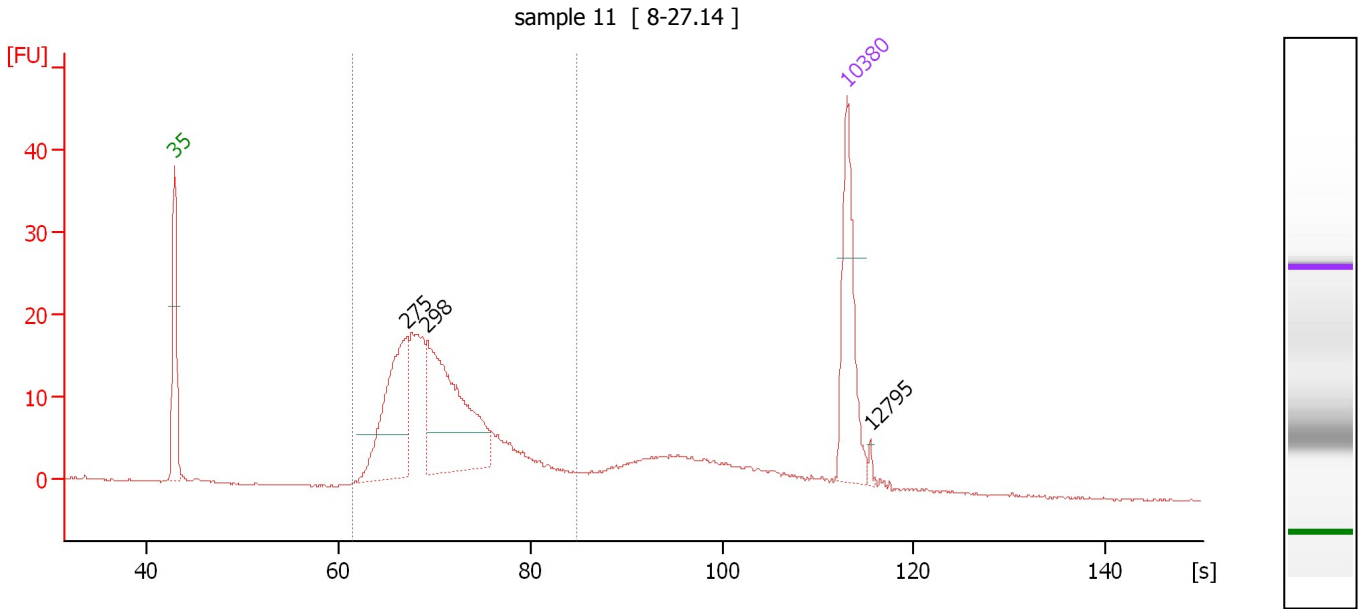
Region table for sample 10 : sample 10

From [s]	To [s]	Average Size [bp]	Molarity [pmol/l]	Conc. [pg/μl]	Corr. Area	% of Total	Size distribution in CV [%]	Color
62.85	81.51	321	528.1	108.26	55.8	67	16.5	Blue

Assay Class: High Sensitivity DNA Assay
 Data Path: C:\...ents and Settings\Bioanalyzer\2013-09-30\2013-09-30_003.xad

Created: 9/30/2013 11:54:19 AM
 Modified: 9/30/2013 12:37:57 PM

Electropherogram Summary Continued ...



Overall Results for sample 11 : sample 11

Number of peaks found: 3 Corr. Area 1: 259.4
 Noise: 0.1

Peak table for sample 11 : sample 11

Peak	Size [bp]	Conc. [pg/μl]	Molarity [pmol/l]	Observations
1	35	125.00	5,411.3	Lower Marker
2	275	147.03	810.5	
3	298	196.40	998.3	
4	10,380	75.00	10.9	Upper Marker
5	12,795	0.00	0.0	

Region table for sample 11 : sample 11

From [s]	To [s]	Average Size [bp]	Molarity [pmol/l]	Conc. [pg/μl]	Corr. Area	% of Total	Size distribution in CV [%]	Color
61.54	84.80	322	2,719.1	552.43	259.4	75	19.5	■

Assay Class: High Sensitivity DNA Assay
Data Path: C:\...ents and Settings\Bioanalyzer\2013-09-30\2013-09-30_003.xad

Created: 9/30/2013 11:54:19 AM
Modified: 9/30/2013 12:37:57 PM

Gel Image

