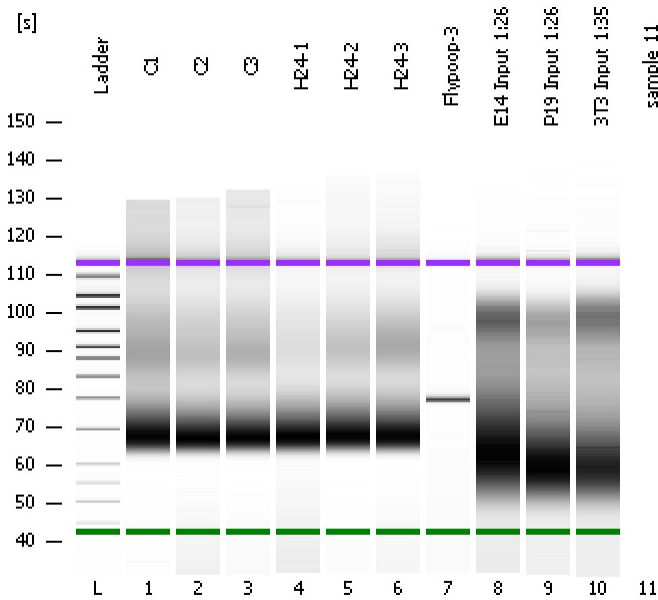


Assay Class: High Sensitivity DNA Assay  
Data Path: C:\...ents and Settings\Bioanalyzer\2013-09-30\2013-09-30\_004.xad

Created: 9/30/2013 1:13:14 PM  
Modified: 9/30/2013 1:54:37 PM

### Electrophoresis File Run Summary



#### Instrument Information:

Instrument Name: DE13701086      Firmware: C.01.069  
Serial#: DE13701086      Type: G2938B

#### Assay Information:

Assay Origin Path: C:\Program Files\Agilent\2100 bioanalyzer\2100 expert\assays\dsDNA\High Sensitivity DNA.xsy  
Assay Class: High Sensitivity DNA Assay  
Version: 1.03  
Assay Comments: Copyright © 2003-2010 Agilent Technologies

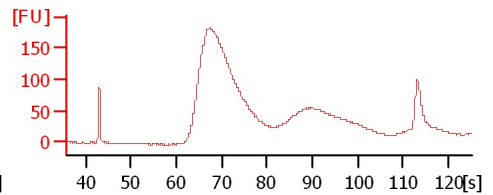
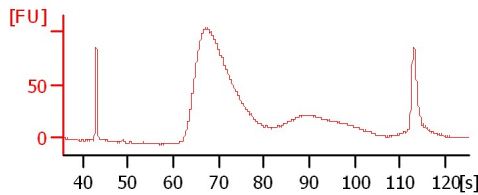
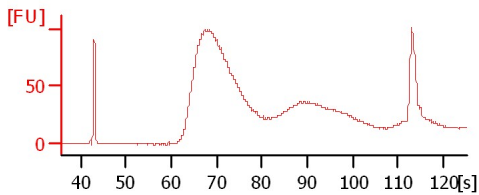
#### Chip Information:

Chip Lot #:        
Reagent Kit Lot #:        
Chip Comments:

C1

C2

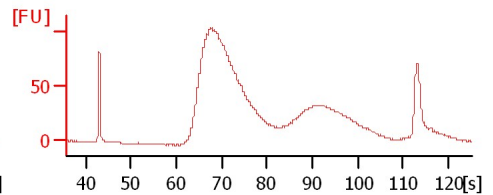
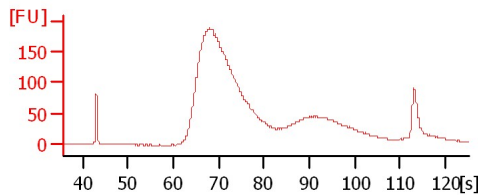
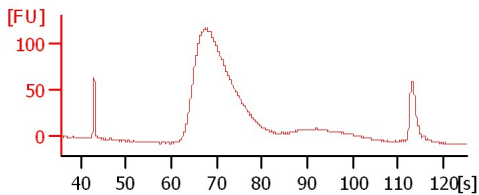
C3



H24-1

H24-2

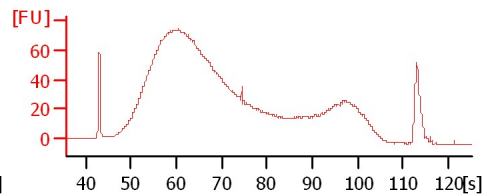
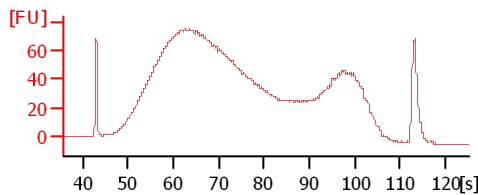
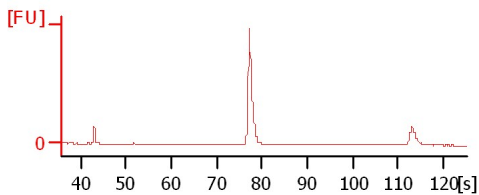
H24-3



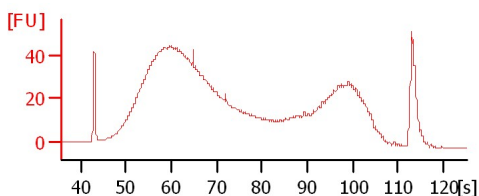
Flypoop-3

E14 Input 1:26

P19 Input 1:26



3T3 Input 1:35



Assay Class: High Sensitivity DNA Assay  
Data Path: C:\...ents and Settings\Bioanalyzer\2013-09-30\2013-09-30\_004.xad

Created: 9/30/2013 1:13:14 PM  
Modified: 9/30/2013 1:54:37 PM

**Electrophoresis File Run Summary (Chip Summary)**

Sample Name	Sample Comment	Rest. Digest	Status	Observation	Result Label	Result Color
C1		<input type="checkbox"/>	✓			
C2		<input type="checkbox"/>	✓			
C3		<input type="checkbox"/>	✓			
H24-1		<input type="checkbox"/>	✓			
H24-2		<input type="checkbox"/>	✓			
H24-3		<input type="checkbox"/>	✓			
Flypooop-3		<input type="checkbox"/>	✓			
E14 Input 1:26		<input type="checkbox"/>	✓			
P19 Input 1:26		<input type="checkbox"/>	✓			
3T3 Input 1:35		<input type="checkbox"/>	✓			
sample 11		<input type="checkbox"/>	✓			
Ladder		<input type="checkbox"/>	✓			

**Chip Lot #**

**Reagent Kit Lot #**

**Chip Comments :**

Assay Class: High Sensitivity DNA Assay  
Data Path: C:\...ents and Settings\Bioanalyzer\2013-09-30\2013-09-30\_004.xad

Created: 9/30/2013 1:13:14 PM  
Modified: 9/30/2013 1:54:37 PM

**Electrophoresis Assay Details**

**General Analysis Settings**

Number of Available Sample and Ladder Wells (Max.) : 12  
Minimum Visible Range [s] : 32  
Maximum Visible Range [s] : 138  
Start Analysis Time Range [s] : 33  
End Analysis Time Range [s] : 137.5  
Ladder Concentration [pg/ $\mu$ l] : 1950  
Uses Standard Area for Ladder Fragments  
Lower Marker Concentration [pg/ $\mu$ l] : 125  
Upper Marker Concentration [pg/ $\mu$ l] : 75  
Used Upper Marker for Quantitation  
Standard Curve Fit is Point to Point  
Show Data Aligned to Lower and Upper Marker

**Integrator Settings**

Integration Start Time [s] : 33.05  
Integration End Time [s] : 137  
Slope Threshold : 0.8  
Height Threshold [FU] : 5  
Area Threshold : 0.1  
Width Threshold [s] : 0.6  
Baseline Plateau [s] : 0.5

**Filter Settings**

Filter Width [s] : 0.5  
Polynomial Order : 4

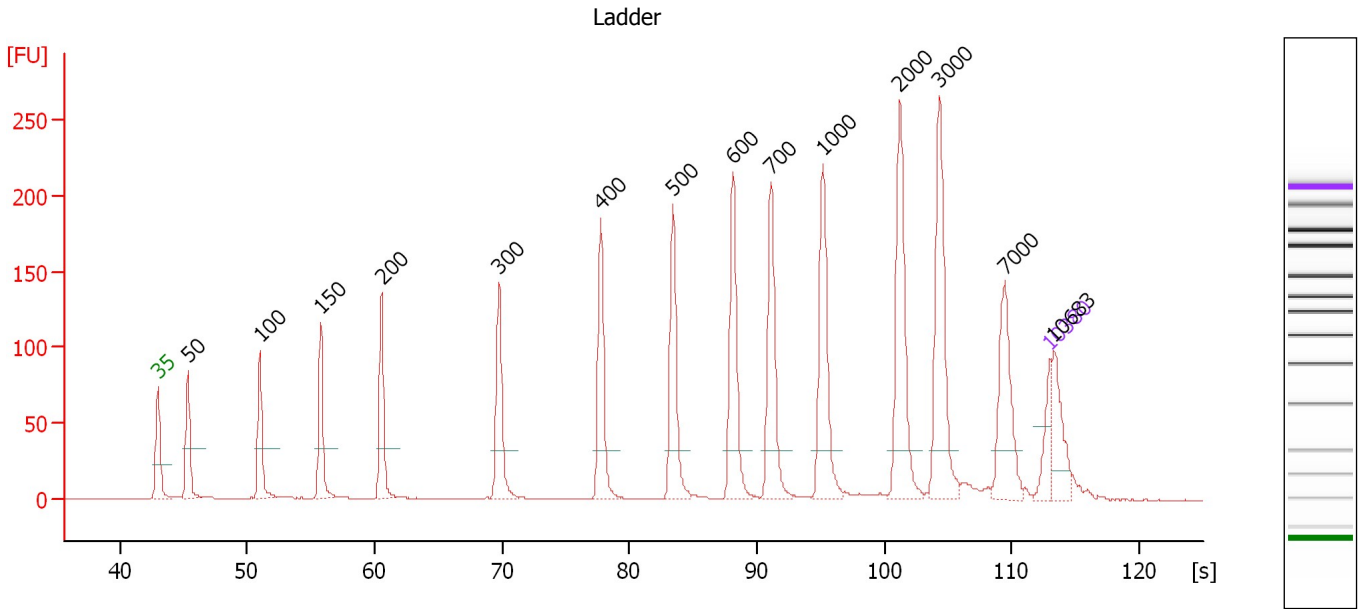
**Ladder**

Ladder Peak	Size	Area
1	35	160
2	50	210
3	100	208
4	150	221
5	200	242
6	300	270
7	400	305
8	500	306
9	600	336
10	700	321
11	1000	366
12	2000	413
13	3000	411
14	7000	400
15	10380	214

Assay Class: High Sensitivity DNA Assay  
 Data Path: C:\...ents and Settings\Bioanalyzer\2013-09-30\2013-09-30\_004.xad

Created: 9/30/2013 1:13:14 PM  
 Modified: 9/30/2013 1:54:37 PM

**Electropherogram Summary**



**Overall Results for Ladder**

Noise: 0.1

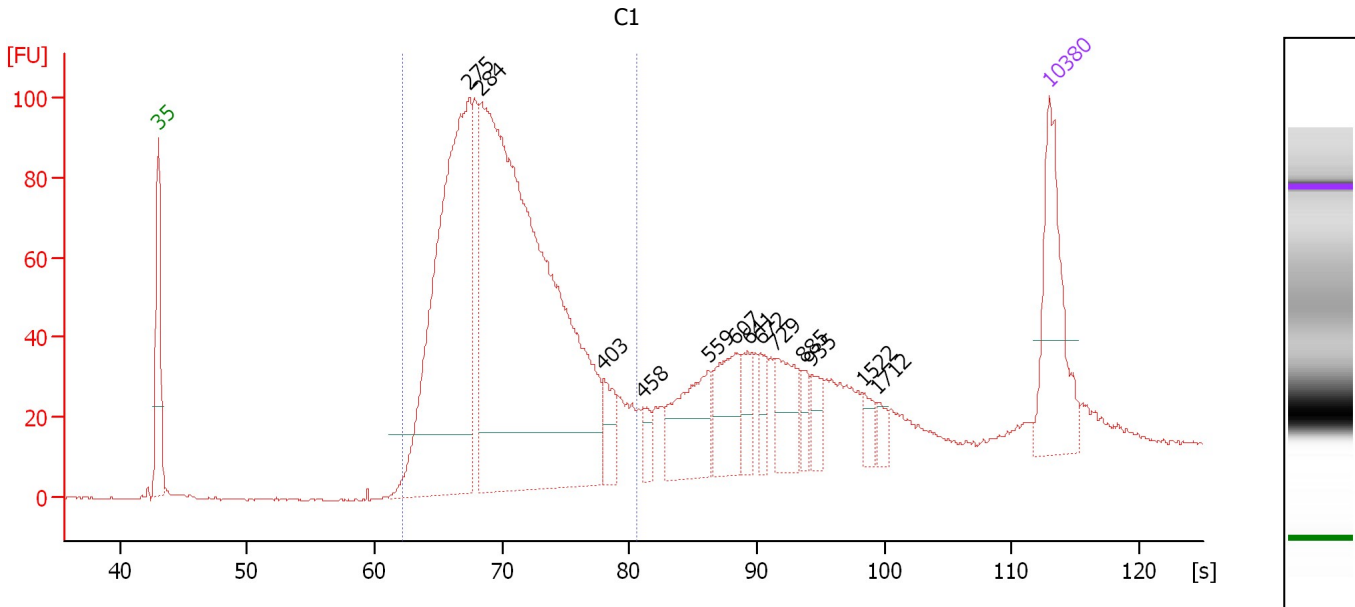
**Peak table for Ladder**

Peak	Size [bp]	Conc. [pg/μl]	Molarity [pmol/l]	Observations
1	35	125.00	5,411.3	Lower Marker
2	50	150.00	4,545.5	Ladder Peak
3	100	150.00	2,272.7	Ladder Peak
4	150	150.00	1,515.2	Ladder Peak
5	200	150.00	1,136.4	Ladder Peak
6	300	150.00	757.6	Ladder Peak
7	400	150.00	568.2	Ladder Peak
8	500	150.00	454.5	Ladder Peak
9	600	150.00	378.8	Ladder Peak
10	700	150.00	324.7	Ladder Peak
11	1,000	150.00	227.3	Ladder Peak
12	2,000	150.00	113.6	Ladder Peak
13	3,000	150.00	75.8	Ladder Peak
14	7,000	150.00	32.5	Ladder Peak
15	10,380	75.00	10.9	Upper Marker
16	10,683	0.00	0.0	

Assay Class: High Sensitivity DNA Assay  
 Data Path: C:\...ents and Settings\Bioanalyzer\2013-09-30\2013-09-30\_004.xad

Created: 9/30/2013 1:13:14 PM  
 Modified: 9/30/2013 1:54:37 PM

**Electropherogram Summary Continued ...**



**Setpoint Deviations for sample 1 : C1**

Height Threshold [FU] : 15

**Overall Results for sample 1 : C1**

Number of peaks found: 13      Corr. Area 1: 1,405.4  
 Noise: 0.2

**Peak table for sample 1 : C1**

Peak	Size [bp]	Conc. [pg/μl]	Molarity [pmol/l]	Observations
1	35	125.00	5,411.3	Lower Marker
2	275	441.68	2,436.2	
3	284	808.12	4,316.5	
4	403	28.64	107.6	
5	458	14.04	46.5	
6	559	71.70	194.2	
7	607	53.80	134.3	
8	641	20.82	49.2	
9	672	18.12	40.9	
10	729	41.89	87.1	
11	885	12.79	21.9	
12	935	17.90	29.0	
13	1,522	11.52	11.5	
14	1,712	8.43	7.5	
15	10,380	75.00	10.9	Upper Marker

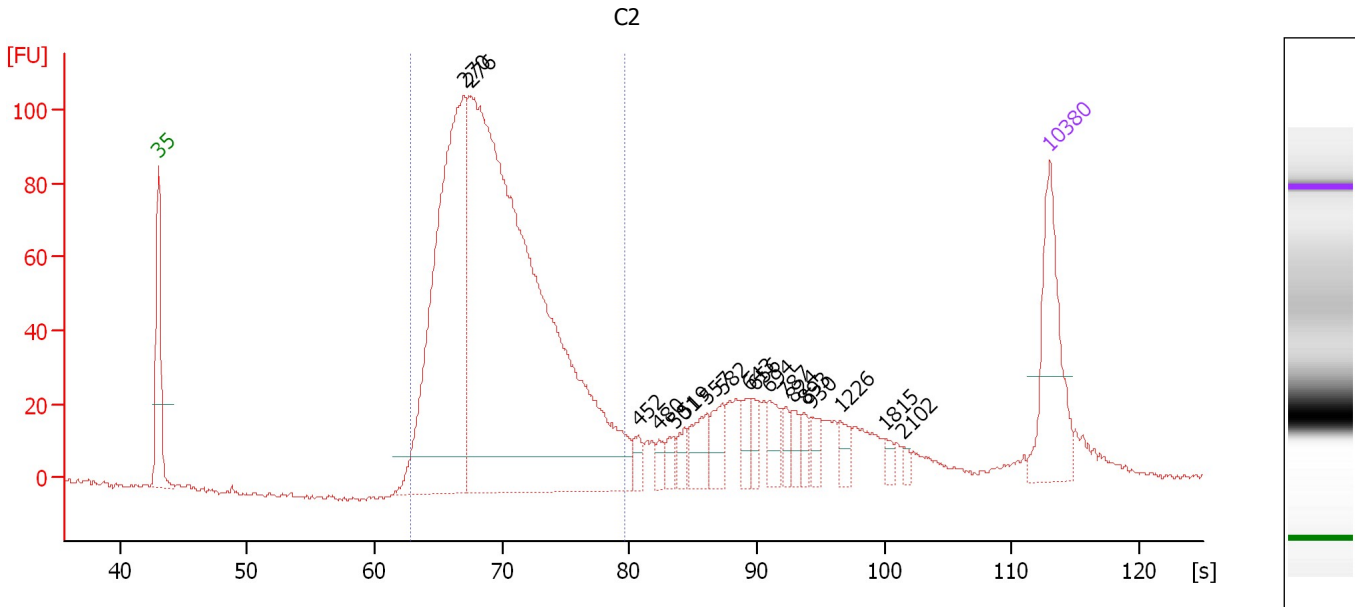
**Region table for sample 1 : C1**

From [s]	To [s]	Average Size [bp]	Molarity [pmol/l]	Conc. [pg/μl]	Corr. Area % of Total	Size distribution in CV [%]	Color
62.22	80.54	308	6,184.2	1,220.75	1,405.4 71	15.9	Blue

Assay Class: High Sensitivity DNA Assay  
 Data Path: C:\...ents and Settings\Bioanalyzer\2013-09-30\2013-09-30\_004.xad

Created: 9/30/2013 1:13:14 PM  
 Modified: 9/30/2013 1:54:37 PM

**Electropherogram Summary Continued ...**



**Setpoint Deviations for sample 2 : C2**

Height Threshold [FU] : 10

**Overall Results for sample 2 : C2**

Number of peaks found: 18      Corr. Area 1: 1,372.2  
 Noise: 0.7

**Peak table for sample 2 : C2**

Peak	Size [bp]	Conc. [pg/μl]	Molarity [pmol/l]	Observations
1	35	125.00	5,411.3	Lower Marker
2	270	467.39	2,623.4	
3	276	1,034.01	5,677.0	
4	452	12.44	41.7	
5	480	9.44	29.8	
6	501	11.30	34.2	
7	519	13.63	39.8	
8	557	28.93	78.6	
9	582	22.73	59.2	
10	643	14.77	34.8	
11	656	12.81	29.6	
12	694	21.51	46.9	
13	787	10.83	20.9	
14	824	11.73	21.6	
15	893	9.38	15.9	
16	930	12.69	20.7	
17	1,226	11.59	14.3	
18	1,815	6.10	5.1	
19	2,102	4.18	3.0	
20	10,380	75.00	10.9	Upper Marker

Assay Class: High Sensitivity DNA Assay  
Data Path: C:\...ents and Settings\Bioanalyzer\2013-09-30\2013-09-30\_004.xad

Created: 9/30/2013 1:13:14 PM  
Modified: 9/30/2013 1:54:37 PM

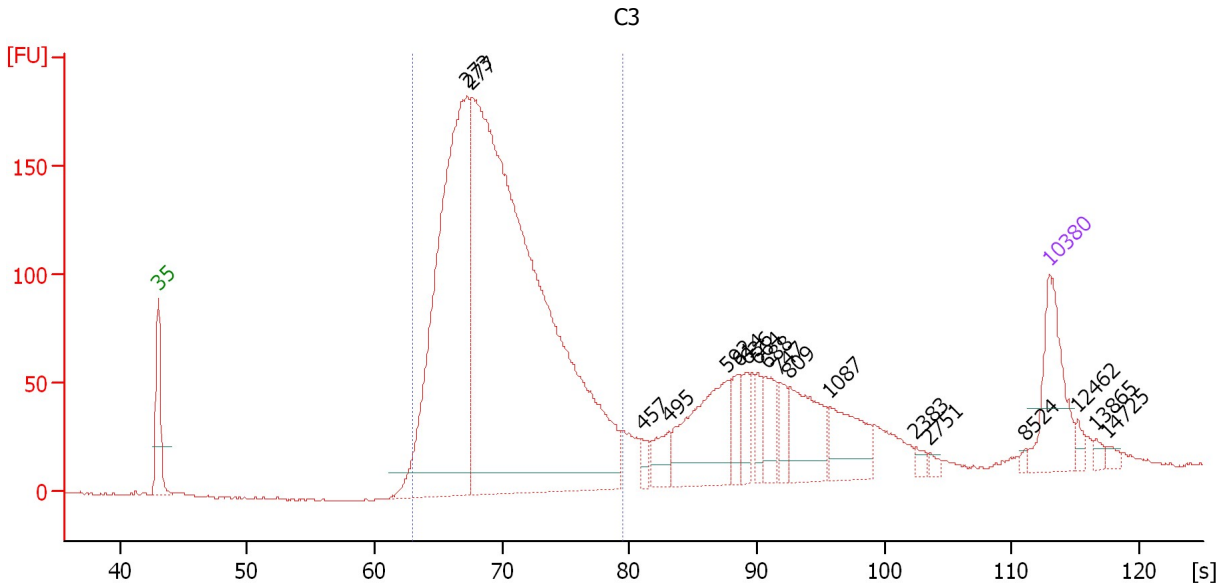
**Electropherogram Summary Continued ...****... Region table for sample 2 :      C2**

<b>From [s]</b>	<b>To [s]</b>	<b>Average Size [bp]</b>	<b>Molarity [pmol/l]</b>	<b>Conc. [pg/μl]</b>	<b>Corr. Area % of Total</b>	<b>Size distribution in CV [%]</b>	<b>Co lor</b>
62.76	79.63	301	6,656.3	1,289.82	1,372.2	77	14.7

Assay Class: High Sensitivity DNA Assay  
 Data Path: C:\...ents and Settings\Bioanalyzer\2013-09-30\2013-09-30\_004.xad

Created: 9/30/2013 1:13:14 PM  
 Modified: 9/30/2013 1:54:37 PM

**Electropherogram Summary Continued ...**



**Setpoint Deviations for sample 3 : C3**

Height Threshold [FU] : 10

**Overall Results for sample 3 : C3**

Number of peaks found: 18      Corr. Area 1: 2,325.8  
 Noise: 0.5

**Peak table for sample 3 : C3**

Peak	Size [bp]	Conc. [pg/μl]	Molarity [pmol/l]	Observations
1	35	125.00	5,411.3	Lower Marker
2	273	687.08	3,813.5	
3	277	1,416.12	7,758.0	
4	457	12.21	40.5	
5	495	32.63	99.9	
6	592	131.06	335.7	
7	614	31.61	78.1	
8	636	25.12	59.9	
9	664	23.15	52.8	
10	688	41.08	90.5	
11	747	25.06	50.9	
12	809	82.57	154.6	
13	1,087	63.23	88.1	
14	2,383	6.70	4.3	
15	2,751	5.08	2.8	
16	8,524	3.50	0.6	
17	10,380	75.00	10.9	Upper Marker
18	12,462	0.00	0.0	
19	13,865	0.00	0.0	
20	14,725	0.00	0.0	



Assay Class: High Sensitivity DNA Assay  
Data Path: C:\...ents and Settings\Bioanalyzer\2013-09-30\2013-09-30\_004.xad

Created: 9/30/2013 1:13:14 PM  
Modified: 9/30/2013 1:54:37 PM

**Electropherogram Summary Continued ...**

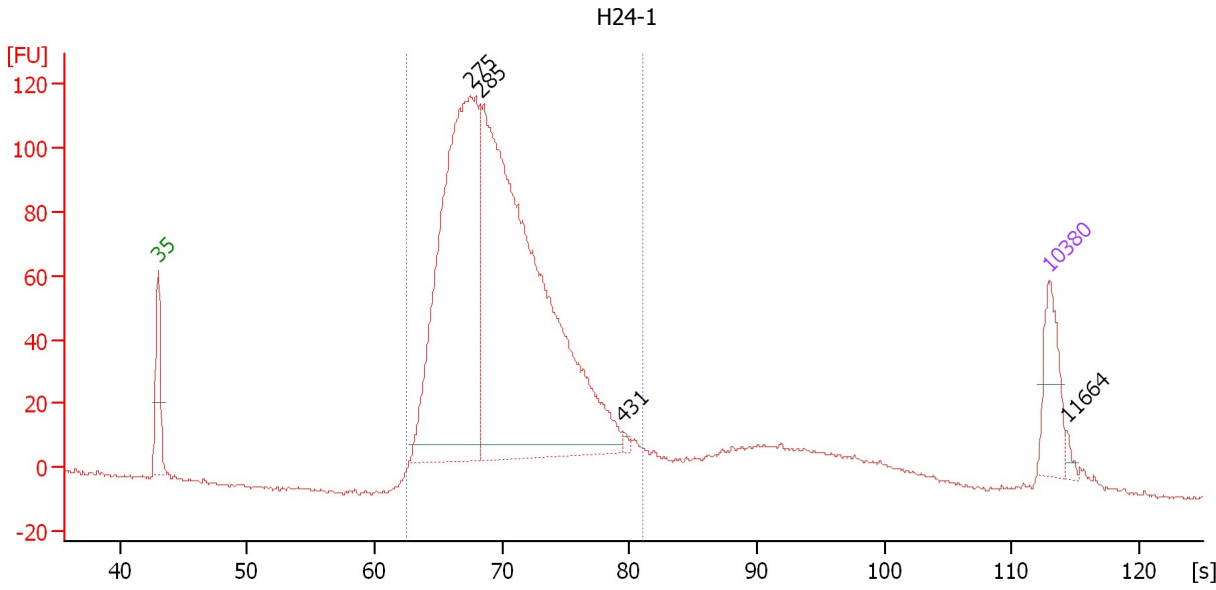
... Region table for sample 3 : C3

From [s]	To [s]	Average Size [bp]	Molarity [pmol/l]	Conc. [pg/μl]	Corr. Area % of Total	Size distribution in CV [%]	Color
62.95	79.45	302	9,581.3	1,865.16	2,325.8	73	14.5

Assay Class: High Sensitivity DNA Assay  
 Data Path: C:\...ents and Settings\Bioanalyzer\2013-09-30\2013-09-30\_004.xad

Created: 9/30/2013 1:13:14 PM  
 Modified: 9/30/2013 1:54:37 PM

**Electropherogram Summary Continued ...**



**Overall Results for sample 4 : H24-1**

Number of peaks found: 4                      Corr. Area 1: 1,651.0  
 Noise: 0.5

**Peak table for sample 4 : H24-1**

Peak	Size [bp]	Conc. [pg/μl]	Molarity [pmol/l]	Observations
1	35	125.00	5,411.3	Lower Marker
2	275	1,000.33	5,504.1	
3	285	1,396.03	7,429.5	
4	431	6.22	21.9	
5	10,380	75.00	10.9	Upper Marker
6	11,664	0.00	0.0	

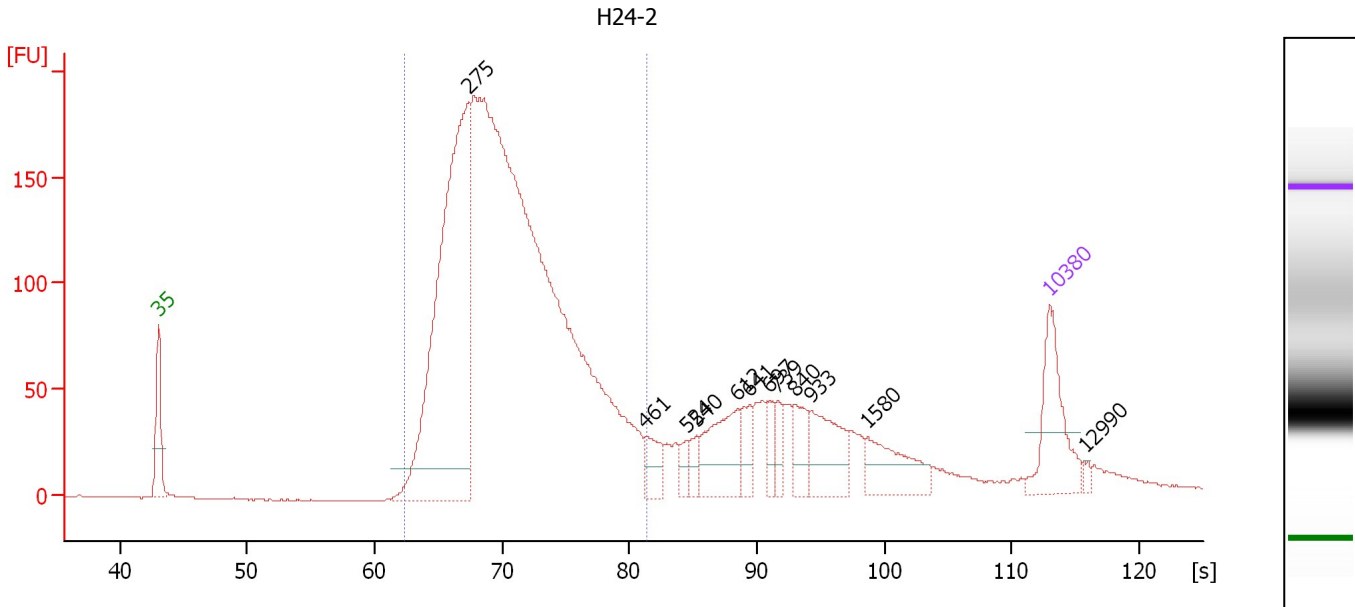
**Region table for sample 4 : H24-1**

From [s]	To [s]	Average Size [bp]	Molarity [pmol/l]	Conc. [pg/μl]	Corr. Area % of Total	Size distribution in CV [%]	Color
62.53	81.01	307	13,204.2	2,594.60	1,651.0 85	15.7	■

Assay Class: High Sensitivity DNA Assay  
 Data Path: C:\...ents and Settings\Bioanalyzer\2013-09-30\2013-09-30\_004.xad

Created: 9/30/2013 1:13:14 PM  
 Modified: 9/30/2013 1:54:37 PM

**Electropherogram Summary Continued ...**



**Setpoint Deviations for sample 5 : H24-2**

Height Threshold [FU] : 15

**Overall Results for sample 5 : H24-2**

Number of peaks found: 12      Corr. Area 1: 2,721.8  
 Noise: 0.4

**Peak table for sample 5 : H24-2**

Peak	Size [bp]	Conc. [pg/μl]	Molarity [pmol/l]	Observations
1	35	125.00	5,411.3	Lower Marker
2	275	677.27	3,738.0	
3	461	38.96	128.0	
4	524	16.43	47.5	
5	540	17.21	48.3	
6	612	86.63	214.5	
7	641	30.39	71.8	
8	697	23.77	51.7	
9	739	22.93	47.0	
10	840	37.93	68.4	
11	933	72.43	117.7	
12	1,580	61.22	58.7	
13	10,380	75.00	10.9	Upper Marker
14	12,990	0.00	0.0	

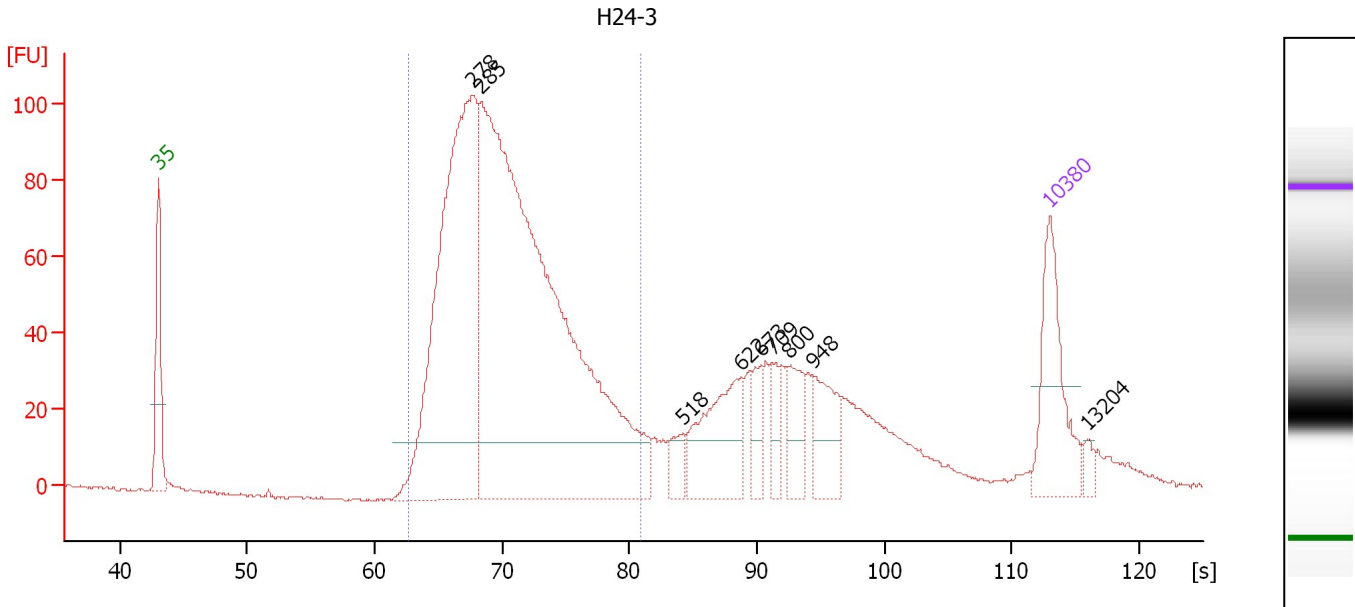
**Region table for sample 5 : H24-2**

From [s]	To [s]	Average Size [bp]	Molarity [pmol/l]	Conc. [pg/μl]	Corr. Area % of Total	Size distribution in CV [%]	Color
62.43	81.40	313	11,183.7	2,232.79	2,721.8 76	16.4	Blue

Assay Class: High Sensitivity DNA Assay  
 Data Path: C:\...ents and Settings\Bioanalyzer\2013-09-30\2013-09-30\_004.xad

Created: 9/30/2013 1:13:14 PM  
 Modified: 9/30/2013 1:54:37 PM

**Electropherogram Summary Continued ...**



**Setpoint Deviations for sample 6 : H24-3**

Height Threshold [FU] : 15

**Overall Results for sample 6 : H24-3**

Number of peaks found: 9      Corr. Area 1: 1,461.6  
 Noise: 0.4

**Peak table for sample 6 : H24-3**

Peak	Size [bp]	Conc. [pg/μl]	Molarity [pmol/l]	Observations
1	35	125.00	5,411.3	Lower Marker
2	278	558.55	3,048.0	
3	285	1,046.46	5,561.2	
4	518	21.07	61.7	
5	622	98.47	239.9	
6	673	26.06	58.7	
7	709	25.11	53.6	
8	800	41.64	78.9	
9	948	51.27	81.9	
10	10,380	75.00	10.9	Upper Marker
11	13,204	0.00	0.0	

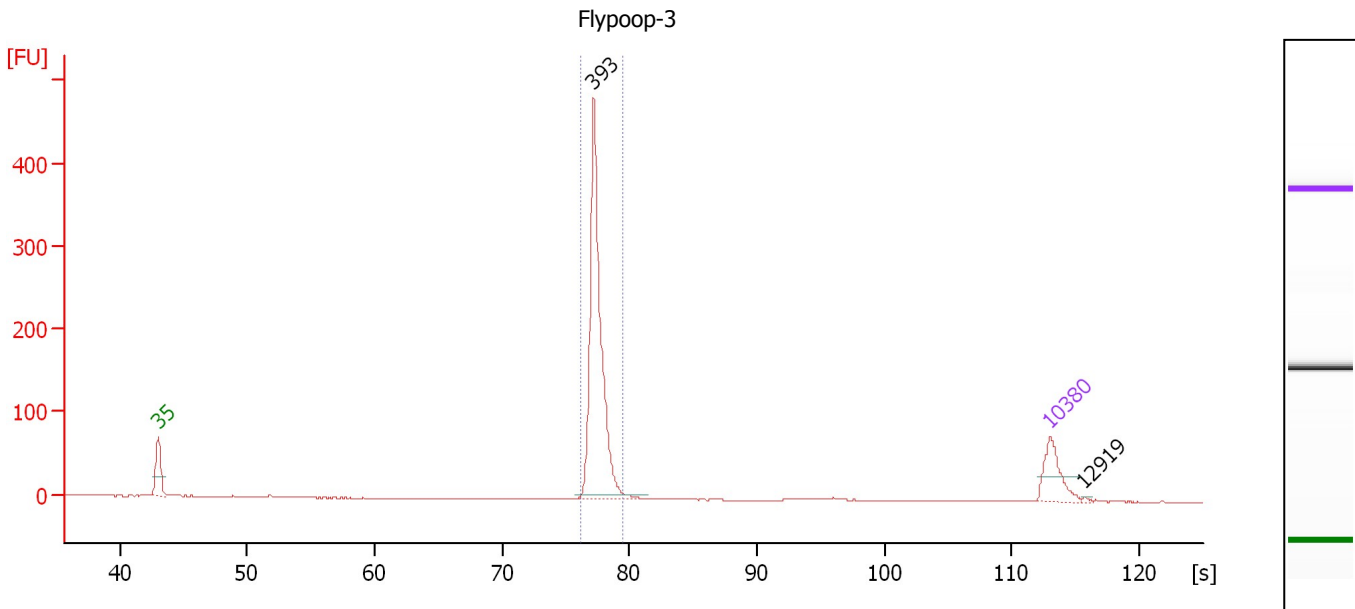
**Region table for sample 6 : H24-3**

From [s]	To [s]	Average Size [bp]	Molarity [pmol/l]	Conc. [pg/μl]	Corr. Area % of Total	Size distribution in CV [%]	Color
62.59	80.89	311	7,122.8	1,416.32	1,461.6    69	16.0	Blue

Assay Class: High Sensitivity DNA Assay  
 Data Path: C:\...ents and Settings\Bioanalyzer\2013-09-30\2013-09-30\_004.xad

Created: 9/30/2013 1:13:14 PM  
 Modified: 9/30/2013 1:54:37 PM

**Electropherogram Summary Continued ...**



**Overall Results for sample 7 : Flypoop-3**

Number of peaks found: 2                      Corr. Area 1: 590.8  
 Noise: 0.2

**Peak table for sample 7 : Flypoop-3**

Peak	Size [bp]	Conc. [pg/μl]	Molarity [pmol/l]	Observations
1	35	125.00	5,411.3	Lower Marker
2	393	639.17	2,465.3	
3	10,380	75.00	10.9	Upper Marker
4	12,919	0.00	0.0	

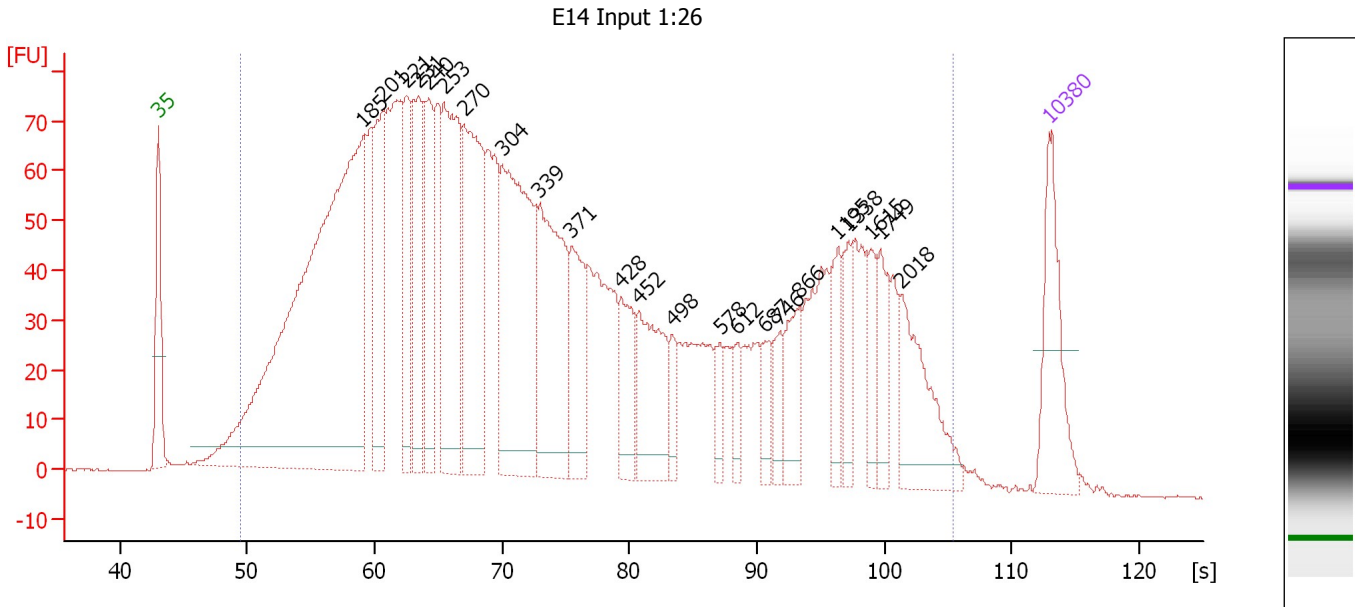
**Region table for sample 7 : Flypoop-3**

From [s]	To [s]	Average Size [bp]	Molarity [pmol/l]	Conc. [pg/μl]	Corr. Area % of Total	Size distribution in CV [%]	Color
76.10	79.52	397	2,372.9	620.83	590.8 96	1.9	Blue

Assay Class: High Sensitivity DNA Assay  
 Data Path: C:\...ents and Settings\Bioanalyzer\2013-09-30\2013-09-30\_004.xad

Created: 9/30/2013 1:13:14 PM  
 Modified: 9/30/2013 1:54:37 PM

**Electropherogram Summary Continued ...**



**Overall Results for sample 8 : E14 Input 1:26**

Number of peaks found: 23                      Corr. Area 1: 3,444.7  
 Noise: 0.2


**Peak table for sample 8 : E14 Input 1:26**

Peak	Size [bp]	Conc. [pg/μl]	Molarity [pmol/l]	Observations
1	35	125.00	5,411.3	Lower Marker
2	185	954.71	7,833.0	
3	201	141.55	1,069.1	
4	221	116.90	801.4	
5	231	121.82	797.3	
6	240	118.46	748.6	
7	253	229.20	1,372.6	
8	270	226.86	1,272.6	
9	304	301.66	1,505.1	
10	339	204.10	911.5	
11	371	86.50	353.2	
12	428	64.64	228.7	
13	452	105.92	355.3	
14	498	25.13	76.4	
15	578	24.87	65.2	
16	612	21.04	52.1	
17	687	25.27	55.8	
18	746	29.12	59.2	
19	866	48.53	84.9	
20	1,195	39.48	50.1	
21	1,338	33.64	38.1	
22	1,615	33.39	31.3	
23	1,749	36.91	32.0	
24	2,018	85.79	64.4	
25	10,380	75.00	10.9	Upper Marker

Assay Class: High Sensitivity DNA Assay  
Data Path: C:\...ents and Settings\Bioanalyzer\2013-09-30\2013-09-30\_004.xad

Created: 9/30/2013 1:13:14 PM  
Modified: 9/30/2013 1:54:37 PM

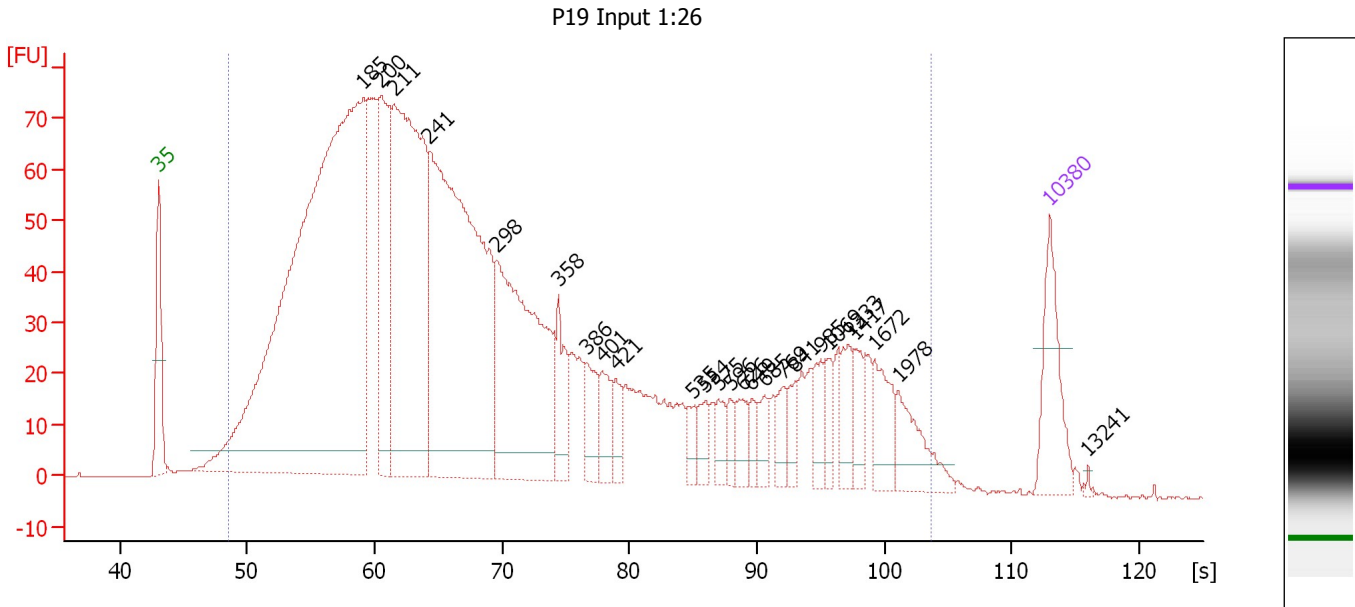
**Electropherogram Summary Continued ...****... Region table for sample 8 : E14 Input 1:26**

<b>From [s]</b>	<b>To [s]</b>	<b>Average Size [bp]</b>	<b>Molarity [pmol/l]</b>	<b>Conc. [pg/μl]</b>	<b>Corr. Area</b>	<b>% of Total</b>	<b>Size distribution in CV [%]</b>	<b>Co lor</b>
49.47	105.35	556	26,395.5	4,317.43	3,444.7	98	100.0	

Assay Class: High Sensitivity DNA Assay  
 Data Path: C:\...ents and Settings\Bioanalyzer\2013-09-30\2013-09-30\_004.xad

Created: 9/30/2013 1:13:14 PM  
 Modified: 9/30/2013 1:54:37 PM

**Electropherogram Summary Continued ...**



**Overall Results for sample 9 : P19 Input 1:26**

Number of peaks found: 25                      Corr. Area 1: 2,734.0  
 Noise: 0.1

**Peak table for sample 9 : P19 Input 1:26**

Peak	Size [bp]	Conc. [pg/μl]	Molarity [pmol/l]	Observations
1	35	125.00	5,411.3	Lower Marker
2	185	1,605.72	13,148.6	
3	200	229.87	1,745.6	
4	211	628.93	4,523.3	
5	241	787.91	4,957.7	
6	298	407.20	2,072.4	
7	358	66.30	280.3	
8	386	48.88	191.8	
9	401	40.40	152.5	
10	421	29.54	106.2	
11	535	20.63	58.5	
12	554	24.98	68.3	
13	575	23.54	62.0	
14	596	19.07	48.5	
15	626	26.04	63.0	
16	649	17.80	41.6	
17	685	25.56	56.6	
18	769	25.72	50.7	
19	841	24.71	44.5	
20	985	30.83	47.4	
21	1,069	22.55	32.0	
22	1,333	34.23	38.9	
23	1,417	27.78	29.7	
24	1,672	48.37	43.8	
25	1,978	53.75	41.2	
26	10,380	75.00	10.9	Upper Marker




Assay Class: High Sensitivity DNA Assay  
Data Path: C:\...ents and Settings\Bioanalyzer\2013-09-30\2013-09-30\_004.xad

Created: 9/30/2013 1:13:14 PM  
Modified: 9/30/2013 1:54:37 PM

**Electropherogram Summary Continued ...****... Peak table for sample 9 : P19 Input 1:26**

Peak	Size [bp]	Conc. [pg/ $\mu$ l]	Molarity [pmol/l]	Observations
27	13,241	0.00	0.0	

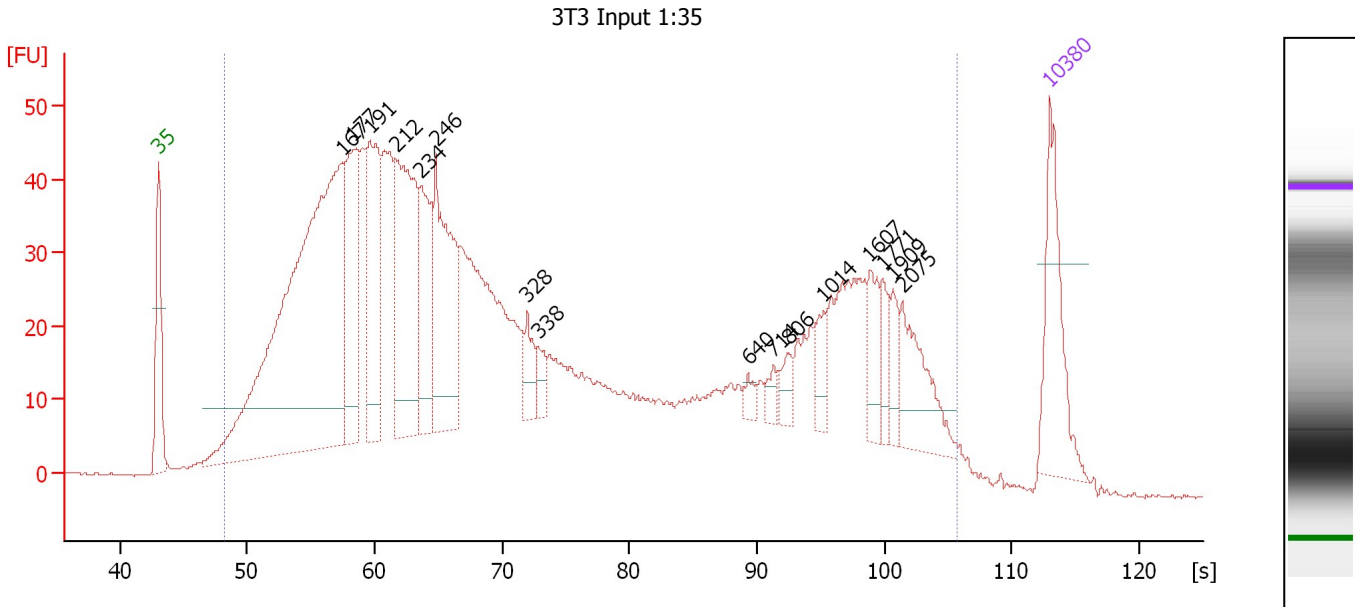
**Region table for sample 9 : P19 Input 1:26**

From [s]	To [s]	Average Size [bp]	Molarity [pmol/l]	Conc. [pg/ $\mu$ l]	Corr. Area	% of Total	Size distribution in CV [%]	Color
48.46	103.63	429	36,051.6	5,047.43	2,734.0	98	100.0	

Assay Class: High Sensitivity DNA Assay  
 Data Path: C:\...ents and Settings\Bioanalyzer\2013-09-30\2013-09-30\_004.xad

Created: 9/30/2013 1:13:14 PM  
 Modified: 9/30/2013 1:54:37 PM

**Electropherogram Summary Continued ...**



**Overall Results for sample 10 : 3T3 Input 1:35**

Number of peaks found: 16      Corr. Area 1: 1,824.5  
 Noise: 0.1

**Peak table for sample 10 : 3T3 Input 1:35**

Peak	Size [bp]	Conc. [pg/μl]	Molarity [pmol/l]	Observations
1	35	125.00	5,411.3	Lower Marker
2	167	769.57	6,975.6	
3	177	153.47	1,314.2	
4	191	155.99	1,240.3	
5	212	219.14	1,564.5	
6	234	101.54	658.3	
7	246	186.97	1,150.8	
8	328	28.63	132.3	
9	338	18.41	82.5	
10	640	8.52	20.2	
11	714	11.82	25.1	
12	806	17.37	32.6	
13	1,014	21.58	32.3	
14	1,607	31.94	30.1	
15	1,771	18.50	15.8	
16	1,909	18.23	14.5	
17	2,075	59.16	43.2	
18	10,380	75.00	10.9	Upper Marker

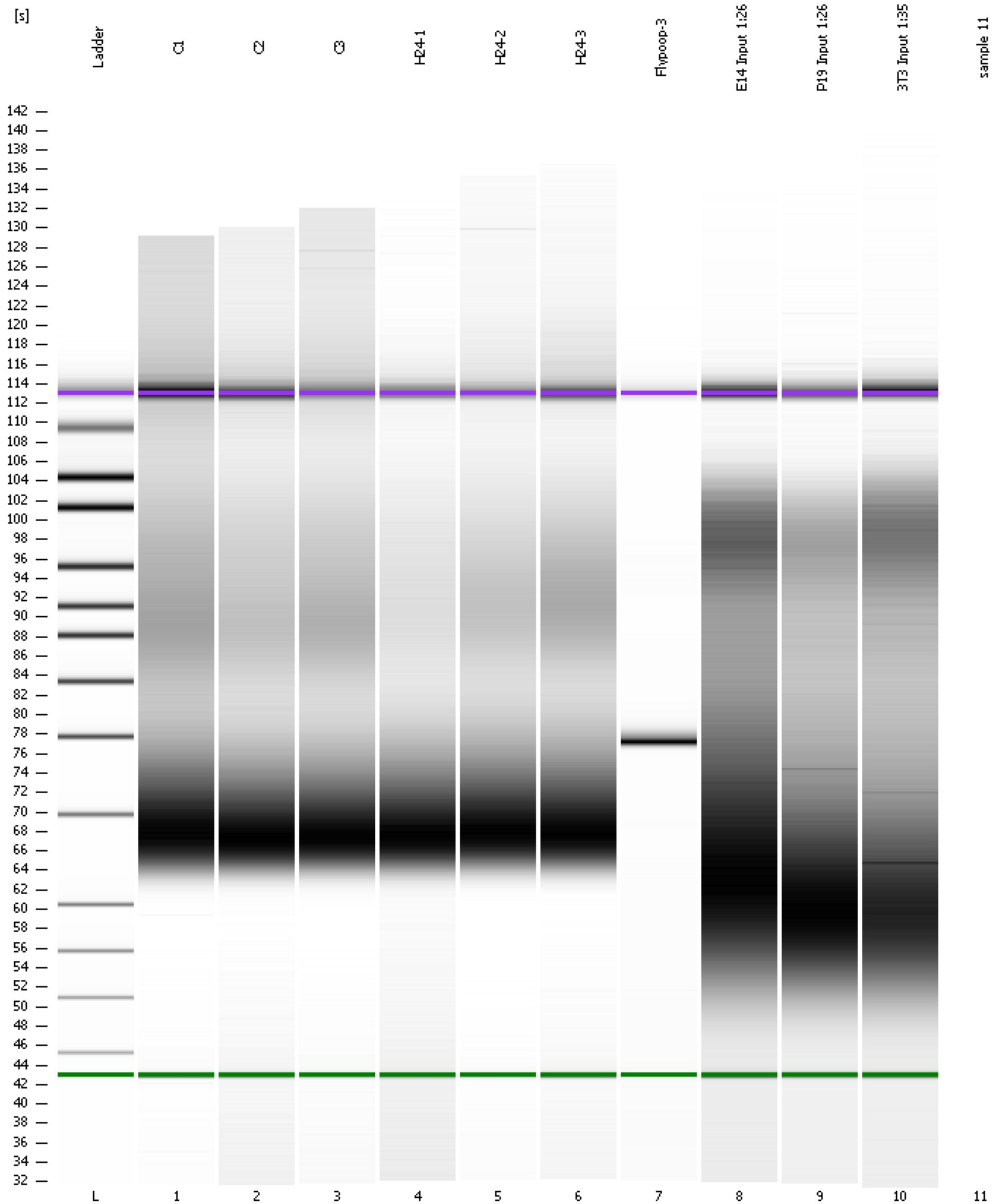
**Region table for sample 10 : 3T3 Input 1:35**

From [s]	To [s]	Average Size [bp]	Molarity [pmol/l]	Conc. [pg/μl]	Corr. Area	% of Total	Size distribution in CV [%]	Color
48.18	105.68	589	24,524.5	3,561.84	1,824.5	98	100.0	Blue

Assay Class: High Sensitivity DNA Assay  
Data Path: C:\...ents and Settings\Bioanalyzer\2013-09-30\2013-09-30\_004.xad

Created: 9/30/2013 1:13:14 PM  
Modified: 9/30/2013 1:54:37 PM

**Gel Image**



Assay Class: High Sensitivity DNA Assay  
Data Path: C:\...ents and Settings\Bioanalyzer\2013-09-30\2013-09-30\_004.xad

Created: 9/30/2013 1:13:14 PM  
Modified: 9/30/2013 1:54:37 PM

**Invalid Samples**

Sample 11 has not been run, no results available.