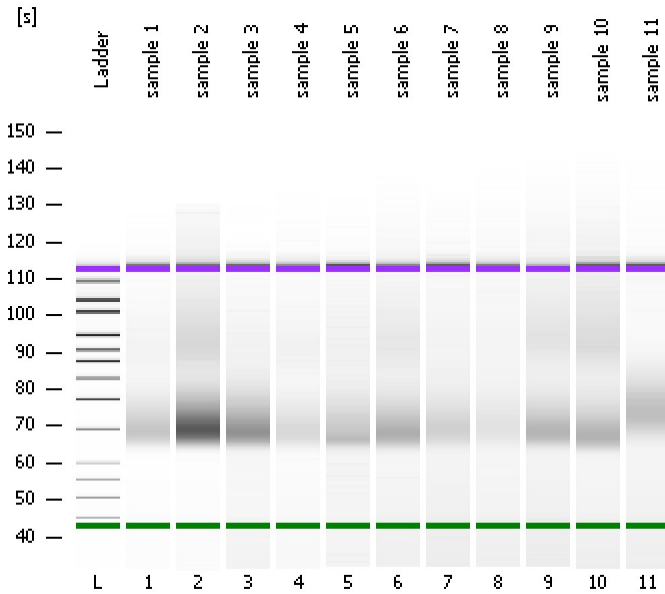


Assay Class: High Sensitivity DNA Assay
Data Path: C:\...ents and Settings\Bioanalyzer\2013-09-30\2013-09-30_006.xad

Created: 9/30/2013 3:39:51 PM
Modified: 9/30/2013 4:23:47 PM

Electrophoresis File Run Summary



Instrument Information:

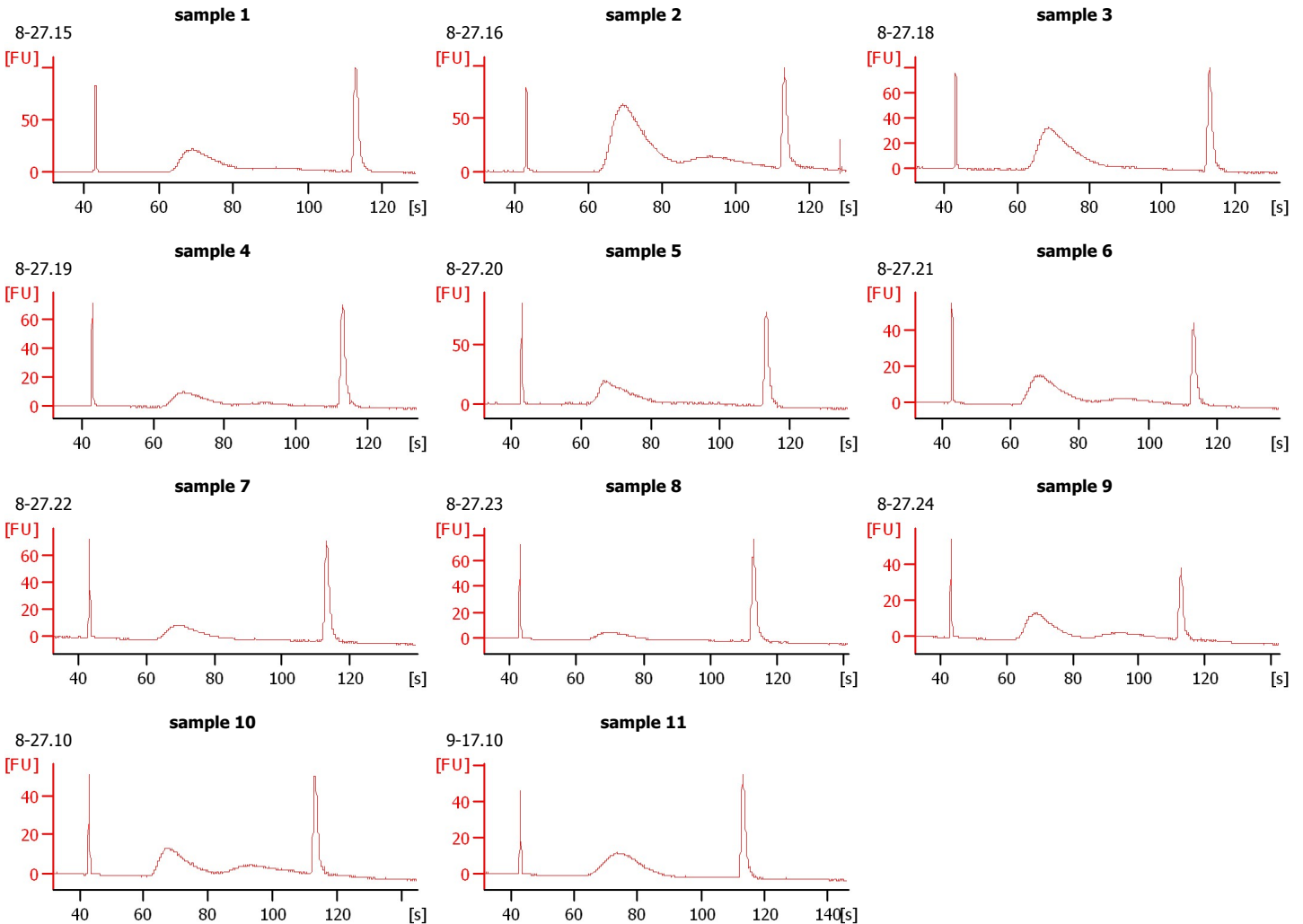
Instrument Name: DE13701086 Firmware: C.01.069
Serial#: DE13701086 Type: G2938B

Assay Information:

Assay Origin Path: C:\Program Files\Agilent\2100 bioanalyzer\2100 expert\assays\dsDNA\High Sensitivity DNA.xsy
Assay Class: High Sensitivity DNA Assay
Version: 1.03
Assay Comments: Copyright © 2003-2010 Agilent Technologies

Chip Information:

Chip Lot #:
Reagent Kit Lot #:
Chip Comments:



Assay Class: High Sensitivity DNA Assay
 Data Path: C:\...ents and Settings\Bioanalyzer\2013-09-30\2013-09-30_006.xad

Created: 9/30/2013 3:39:51 PM
 Modified: 9/30/2013 4:23:47 PM

Electrophoresis File Run Summary (Chip Summary)

Sample Name	Sample Comment	Rest. Digest	Status	Observation	Result Label	Result Color
sample 1	8-27.15	<input type="checkbox"/>	✓			
sample 2	8-27.16	<input type="checkbox"/>	✓			
sample 3	8-27.18	<input type="checkbox"/>	✓			
sample 4	8-27.19	<input type="checkbox"/>	✓			
sample 5	8-27.20	<input type="checkbox"/>	✓			
sample 6	8-27.21	<input type="checkbox"/>	✓			
sample 7	8-27.22	<input type="checkbox"/>	✓			
sample 8	8-27.23	<input type="checkbox"/>	✓			
sample 9	8-27.24	<input type="checkbox"/>	✓			
sample 10	8-27.10	<input type="checkbox"/>	✓			
sample 11	9-17.10	<input type="checkbox"/>	✓			
Ladder		<input type="checkbox"/>	✓			

Chip Lot #

Reagent Kit Lot #

Chip Comments :

Assay Class: High Sensitivity DNA Assay
Data Path: C:\...ents and Settings\Bioanalyzer\2013-09-30\2013-09-30_006.xad

Created: 9/30/2013 3:39:51 PM
Modified: 9/30/2013 4:23:47 PM

Electrophoresis Assay Details

General Analysis Settings

Number of Available Sample and Ladder Wells (Max.) : 12
Minimum Visible Range [s] : 32
Maximum Visible Range [s] : 138
Start Analysis Time Range [s] : 33
End Analysis Time Range [s] : 137.5
Ladder Concentration [pg/μl] : 1950
Uses Standard Area for Ladder Fragments
Lower Marker Concentration [pg/μl] : 125
Upper Marker Concentration [pg/μl] : 75
Used Upper Marker for Quantitation
Standard Curve Fit is Point to Point
Show Data Aligned to Lower and Upper Marker

Integrator Settings

Integration Start Time [s] : 33.05
Integration End Time [s] : 137
Slope Threshold : 0.8
Height Threshold [FU] : 5
Area Threshold : 0.1
Width Threshold [s] : 0.6
Baseline Plateau [s] : 0.5

Filter Settings

Filter Width [s] : 0.5
Polynomial Order : 4

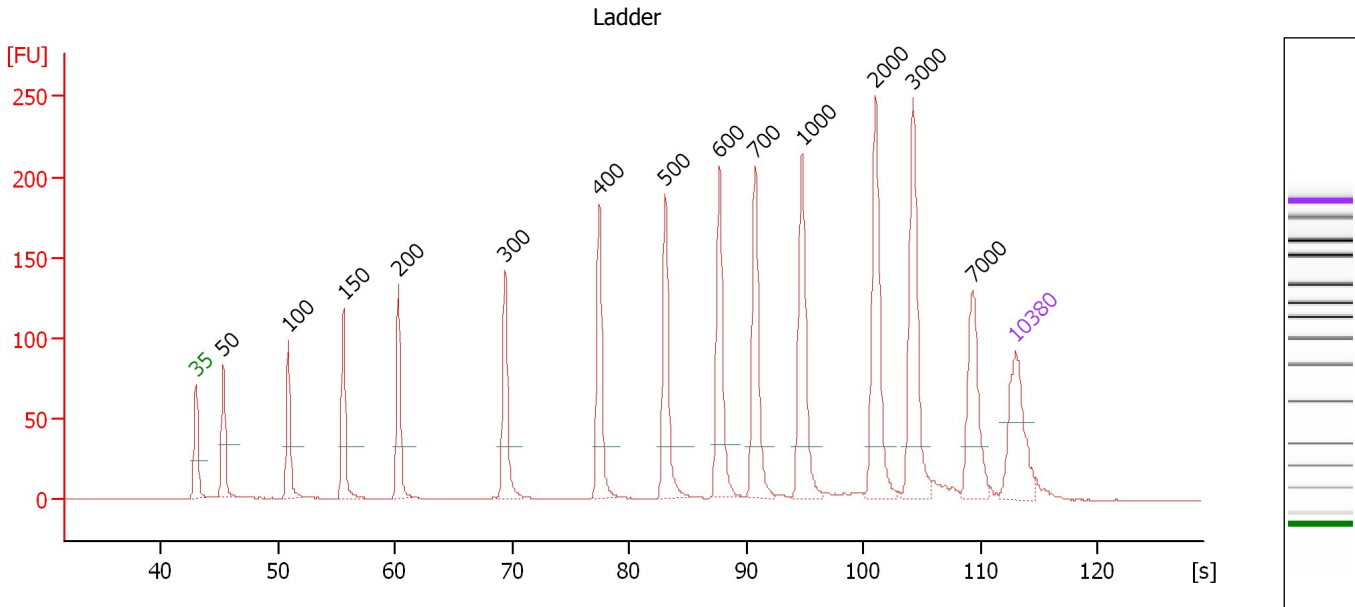
Ladder

Ladder Peak	Size	Area
1	35	160
2	50	210
3	100	208
4	150	221
5	200	242
6	300	270
7	400	305
8	500	306
9	600	336
10	700	321
11	1000	366
12	2000	413
13	3000	411
14	7000	400
15	10380	214

Assay Class: High Sensitivity DNA Assay
 Data Path: C:\...ents and Settings\Bioanalyzer\2013-09-30\2013-09-30_006.xad

Created: 9/30/2013 3:39:51 PM
 Modified: 9/30/2013 4:23:47 PM

Electropherogram Summary



Overall Results for Ladder

Noise: 0.1

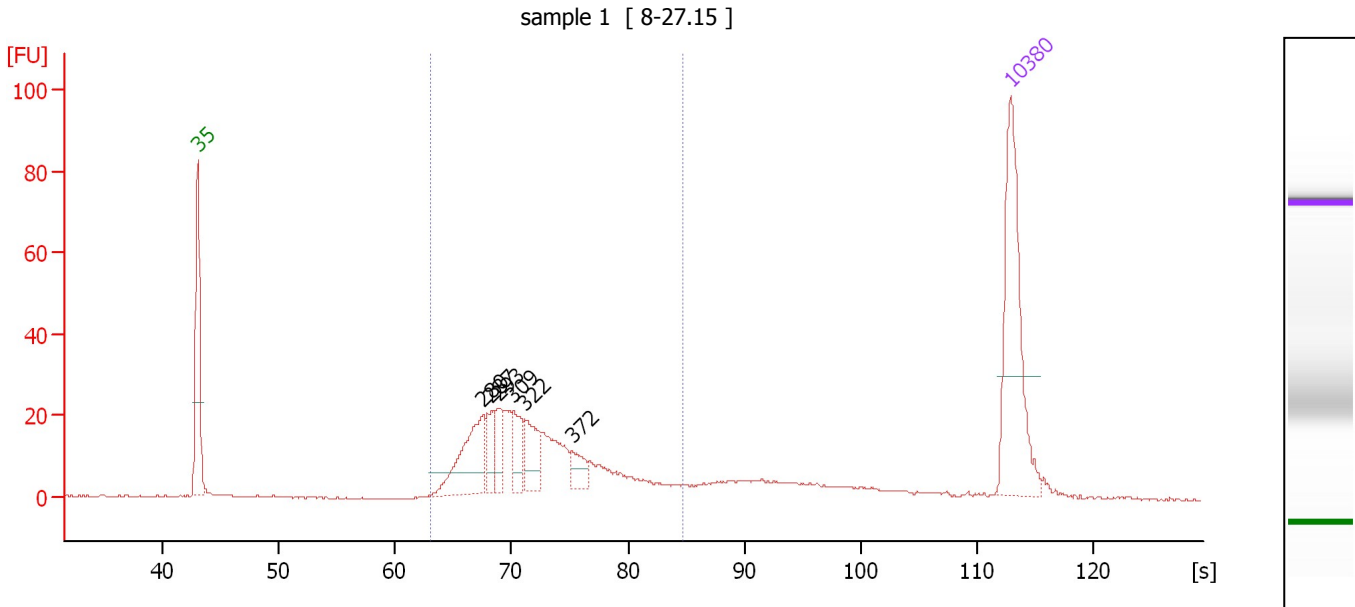
Peak table for Ladder

Peak	Size [bp]	Conc. [pg/μl]	Molarity [pmol/l]	Observations
1	35	125.00	5,411.3	Lower Marker
2	50	150.00	4,545.5	Ladder Peak
3	100	150.00	2,272.7	Ladder Peak
4	150	150.00	1,515.2	Ladder Peak
5	200	150.00	1,136.4	Ladder Peak
6	300	150.00	757.6	Ladder Peak
7	400	150.00	568.2	Ladder Peak
8	500	150.00	454.5	Ladder Peak
9	600	150.00	378.8	Ladder Peak
10	700	150.00	324.7	Ladder Peak
11	1,000	150.00	227.3	Ladder Peak
12	2,000	150.00	113.6	Ladder Peak
13	3,000	150.00	75.8	Ladder Peak
14	7,000	150.00	32.5	Ladder Peak
15	10,380	75.00	10.9	Upper Marker

Assay Class: High Sensitivity DNA Assay
 Data Path: C:\...ents and Settings\Bioanalyzer\2013-09-30\2013-09-30_006.xad

Created: 9/30/2013 3:39:51 PM
 Modified: 9/30/2013 4:23:47 PM

Electropherogram Summary Continued ...



Overall Results for sample 1 : sample 1

Number of peaks found: 6 Corr. Area 1: 338.8
 Noise: 0.2

Peak table for sample 1 : sample 1

Peak	Size [bp]	Conc. [pg/μl]	Molarity [pmol/l]	Observations
1	35	125.00	5,411.3	Lower Marker
2	280	61.14	331.2	
3	287	17.33	91.4	
4	293	21.44	110.7	
5	309	21.99	107.8	
6	322	28.48	134.1	
7	372	13.24	53.9	
8	10,380	75.00	10.9	Upper Marker

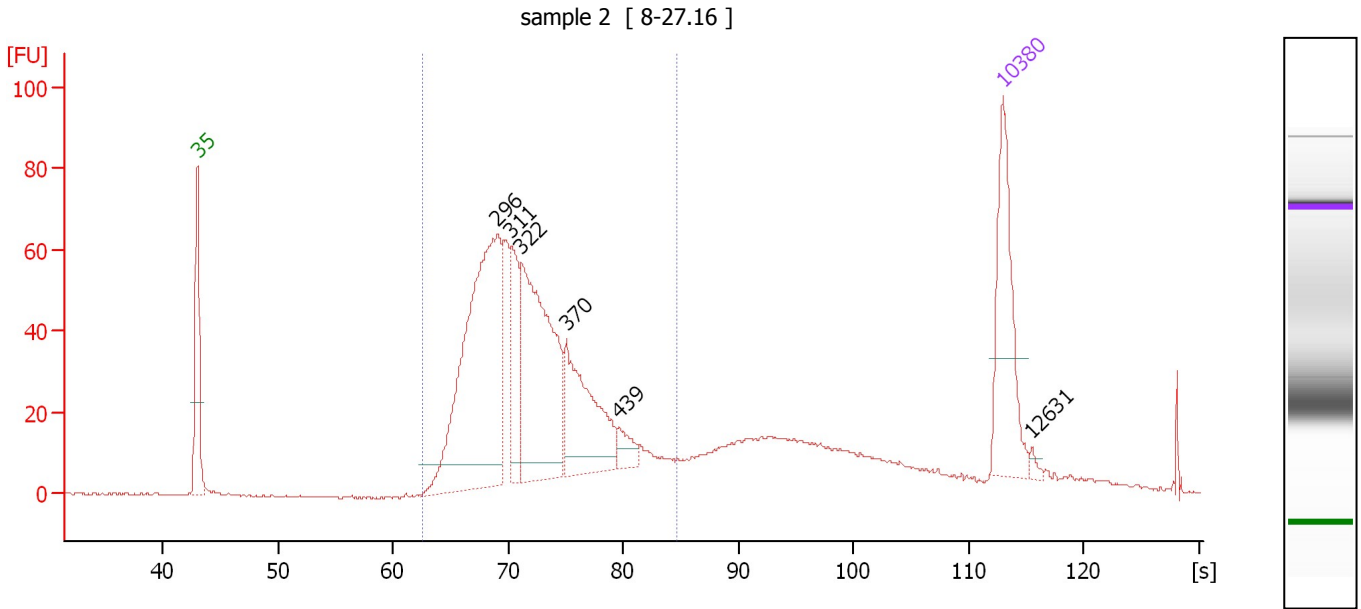
Region table for sample 1 : sample 1

From [s]	To [s]	Average Size [bp]	Molarity [pmol/l]	Conc. [pg/μl]	Corr. Area	% of Total	Size distribution in CV [%]	Color
62.94	84.69	335	1,363.7	288.88	338.8	77	18.9	Blue

Assay Class: High Sensitivity DNA Assay
 Data Path: C:\...ents and Settings\Bioanalyzer\2013-09-30\2013-09-30_006.xad

Created: 9/30/2013 3:39:51 PM
 Modified: 9/30/2013 4:23:47 PM

Electropherogram Summary Continued ...



Overall Results for sample 2 : sample 2

Number of peaks found: 6 Corr. Area 1: 951.0
 Noise: 0.2

Peak table for sample 2 : sample 2

Peak	Size [bp]	Conc. [pg/μl]	Molarity [pmol/l]	Observations
1	35	125.00	5,411.3	Lower Marker
2	296	322.12	1,648.8	
3	311	65.45	319.3	
4	322	215.24	1,014.0	
5	370	109.90	449.4	
6	439	16.35	56.4	
7	10,380	75.00	10.9	Upper Marker
8	12,631	0.00	0.0	

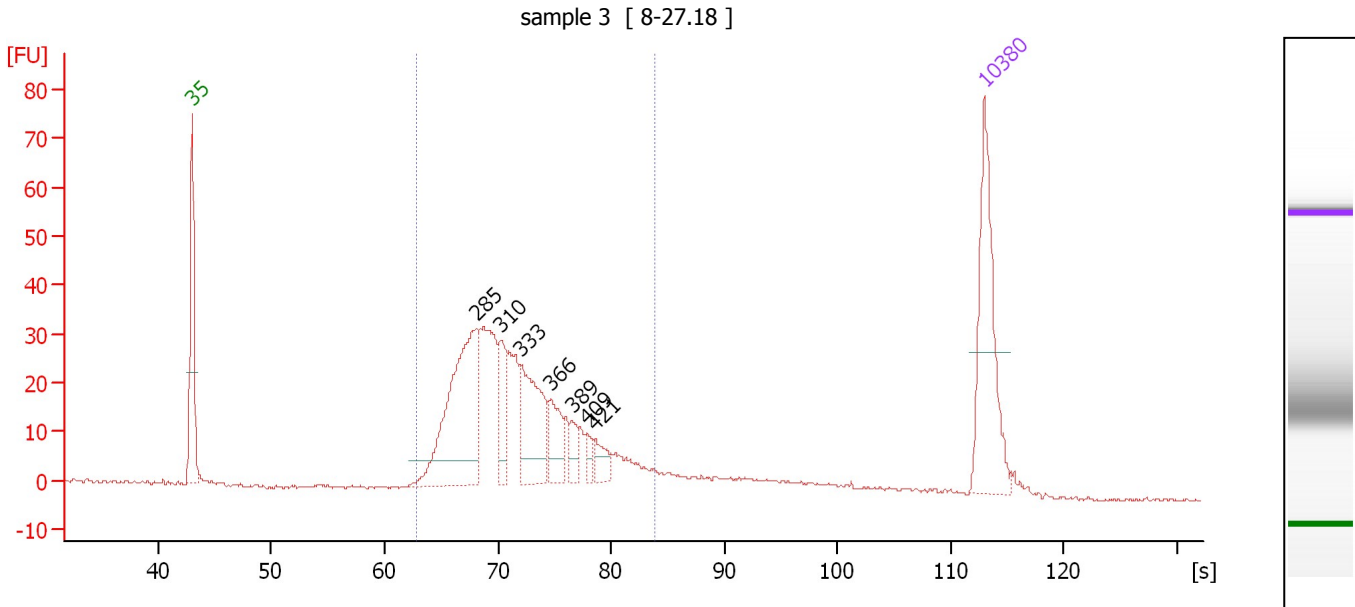
Region table for sample 2 : sample 2

From [s]	To [s]	Average Size [bp]	Molarity [pmol/l]	Conc. [pg/μl]	Corr. Area	% of Total	Size distribution in CV [%]	Color
62.62	84.57	336	4,185.1	890.16	951.0	76	18.2	Blue

Assay Class: High Sensitivity DNA Assay
 Data Path: C:\...ents and Settings\Bioanalyzer\2013-09-30\2013-09-30_006.xad

Created: 9/30/2013 3:39:51 PM
 Modified: 9/30/2013 4:23:47 PM

Electropherogram Summary Continued ...



Overall Results for sample 3 : sample 3

Number of peaks found: 7 Corr. Area 1: 489.6
 Noise: 0.2

Peak table for sample 3 : sample 3

Peak	Size [bp]	Conc. [pg/μl]	Molarity [pmol/l]	Observations
1	35	125.00	5,411.3	Lower Marker
2	285	161.26	856.6	
3	310	37.80	184.5	
4	333	76.70	349.1	
5	366	30.48	126.2	
6	389	11.69	45.5	
7	409	7.68	28.5	
8	421	14.16	51.0	
9	10,380	75.00	10.9	Upper Marker

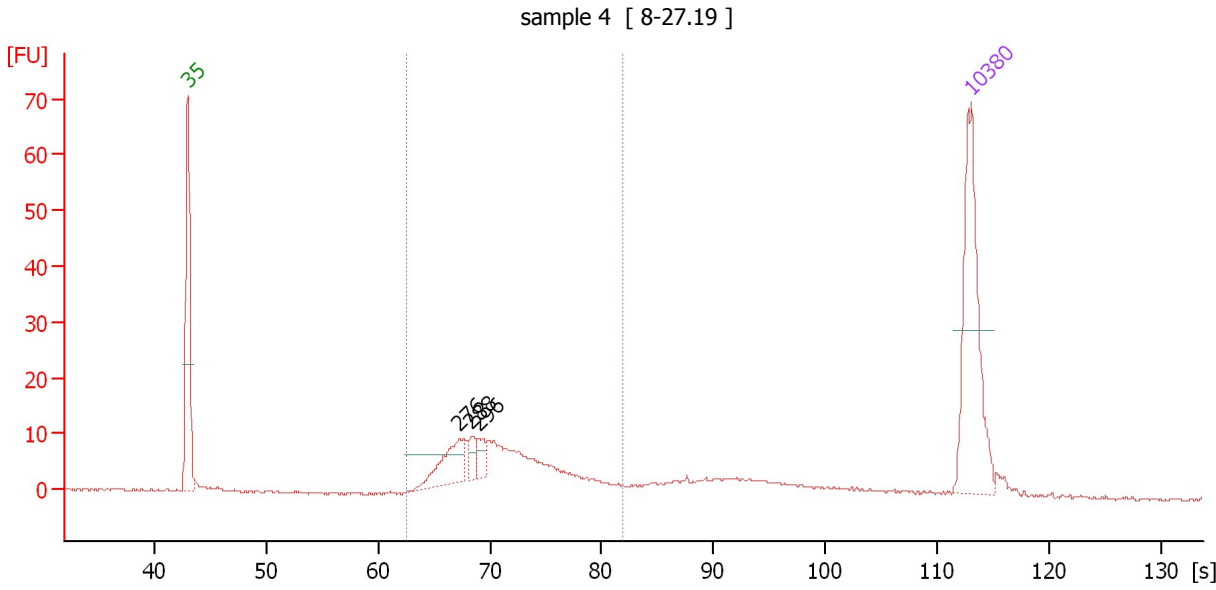
Region table for sample 3 : sample 3

From [s]	To [s]	Average Size [bp]	Molarity [pmol/l]	Conc. [pg/μl]	Corr. Area % of Total	Size distribution in CV [%]	Color
62.87	83.89	331	2,593.2	544.36	489.6 89	18.1	Blue

Assay Class: High Sensitivity DNA Assay
 Data Path: C:\...ents and Settings\Bioanalyzer\2013-09-30\2013-09-30_006.xad

Created: 9/30/2013 3:39:51 PM
 Modified: 9/30/2013 4:23:47 PM

Electropherogram Summary Continued ...



Overall Results for sample 4 : sample 4

Number of peaks found: 3 Corr. Area 1: 150.4
 Noise: 0.2

Peak table for sample 4 : sample 4

Peak	Size [bp]	Conc. [pg/μl]	Molarity [pmol/l]	Observations
1	35	125.00	5,411.3	Lower Marker
2	276	39.09	214.3	
3	288	11.68	61.3	
4	296	9.95	50.9	
5	10,380	75.00	10.9	Upper Marker

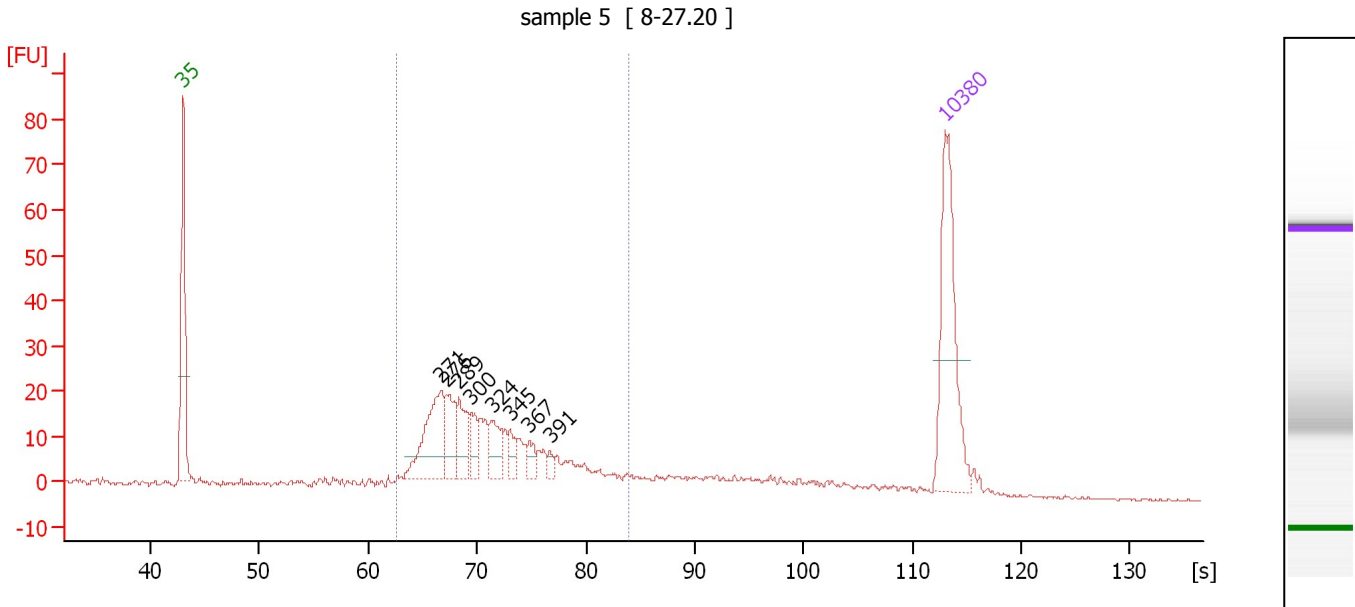
Region table for sample 4 : sample 4

From [s]	To [s]	Average Size [bp]	Molarity [pmol/l]	Conc. [pg/μl]	Corr. Area % of Total	Size distribution in CV [%]	Color
62.54	81.93	326	887.0	184.08	150.4 65	16.7	■

Assay Class: High Sensitivity DNA Assay
 Data Path: C:\...ents and Settings\Bioanalyzer\2013-09-30\2013-09-30_006.xad

Created: 9/30/2013 3:39:51 PM
 Modified: 9/30/2013 4:23:47 PM

Electropherogram Summary Continued ...



Overall Results for sample 5 : sample 5

Number of peaks found: 8 Corr. Area 1: 304.2
 Noise: 0.2

Peak table for sample 5 : sample 5

Peak	Size [bp]	Conc. [pg/μl]	Molarity [pmol/l]	Observations
1	35	125.00	5,411.3	Lower Marker
2	271	67.33	376.9	
3	276	31.30	172.1	
4	289	27.95	146.8	
5	300	17.63	89.1	
6	324	22.20	103.7	
7	345	10.88	47.7	
8	367	9.26	38.2	
9	391	4.73	18.3	
10	10,380	75.00	10.9	Upper Marker

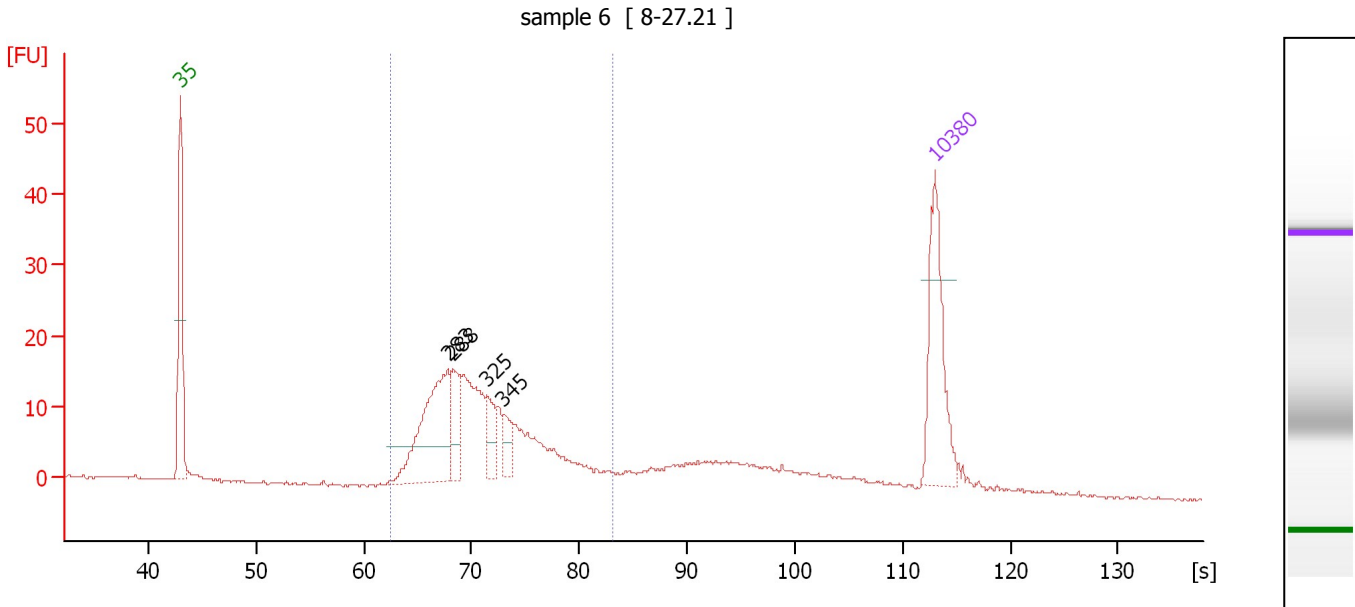
Region table for sample 5 : sample 5

From [s]	To [s]	Average Size [bp]	Molarity [pmol/l]	Conc. [pg/μl]	Corr. Area % of Total	Size distribution in CV [%]	Color
62.56	84.02	327	1,594.9	328.51	304.2 75	19.7	Blue

Assay Class: High Sensitivity DNA Assay
 Data Path: C:\...ents and Settings\Bioanalyzer\2013-09-30\2013-09-30_006.xad

Created: 9/30/2013 3:39:51 PM
 Modified: 9/30/2013 4:23:47 PM

Electropherogram Summary Continued ...



Overall Results for sample 6 : sample 6

Number of peaks found: 4 Corr. Area 1: 232.0
 Noise: 0.2

Peak table for sample 6 : sample 6

Peak	Size [bp]	Conc. [pg/µl]	Molarity [pmol/l]	Observations
1	35	125.00	5,411.3	Lower Marker
2	283	142.31	763.2	
3	288	44.47	233.9	
4	325	30.50	142.0	
5	345	21.16	93.0	
6	10,380	75.00	10.9	Upper Marker

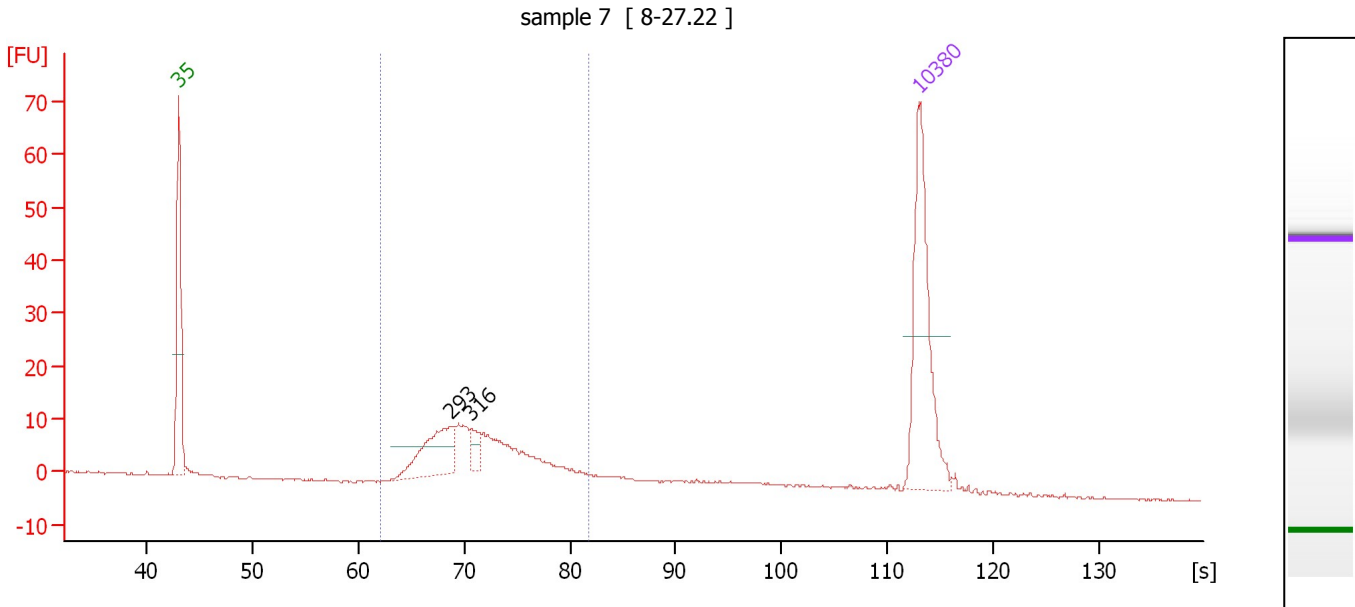
Region table for sample 6 : sample 6

From [s]	To [s]	Average Size [bp]	Molarity [pmol/l]	Conc. [pg/µl]	Corr. Area % of Total	Size distribution in CV [%]	Color
62.41	83.12	325	2,264.1	467.39	71	17.6	Blue

Assay Class: High Sensitivity DNA Assay
 Data Path: C:\...ents and Settings\Bioanalyzer\2013-09-30\2013-09-30_006.xad

Created: 9/30/2013 3:39:51 PM
 Modified: 9/30/2013 4:23:47 PM

Electropherogram Summary Continued ...



Overall Results for sample 7 : sample 7

Number of peaks found: 2 Corr. Area 1: 159.4
 Noise: 0.2

Peak table for sample 7 : sample 7

Peak	Size [bp]	Conc. [pg/μl]	Molarity [pmol/l]	Observations
1	35	125.00	5,411.3	Lower Marker
2	293	49.51	256.1	
3	316	11.39	54.6	
4	10,380	75.00	10.9	Upper Marker

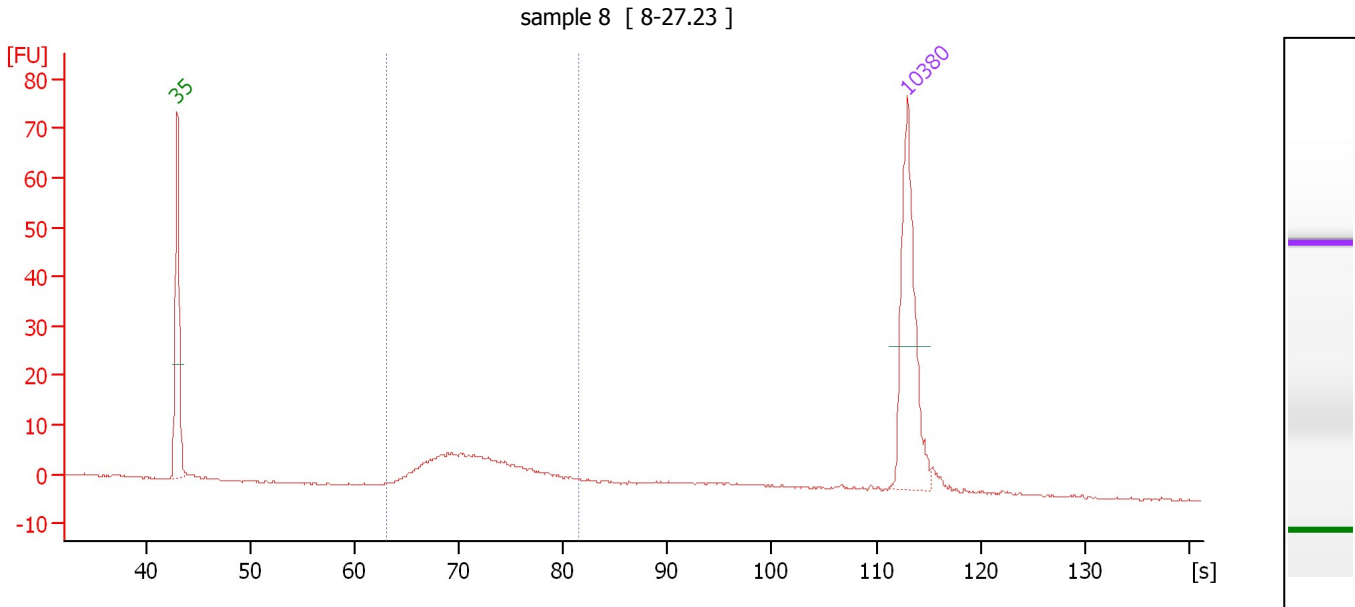
Region table for sample 7 : sample 7

From [s]	To [s]	Average Size [bp]	Molarity [pmol/l]	Conc. [pg/μl]	Corr. Area % of Total	Size distribution in CV [%]	Color
62.15	81.87	331	835.7	176.60	159.4 77	16.3	■

Assay Class: High Sensitivity DNA Assay
 Data Path: C:\...ents and Settings\Bioanalyzer\2013-09-30\2013-09-30_006.xad

Created: 9/30/2013 3:39:51 PM
 Modified: 9/30/2013 4:23:47 PM

Electropherogram Summary Continued ...



Overall Results for sample 8 : sample 8

Number of peaks found: 0 Corr. Area 1: 88.2
 Noise: 0.1

Peak table for sample 8 : sample 8

Peak	Size [bp]	Conc. [pg/μl]	Molarity [pmol/l]	Observations
1	35	125.00	5,411.3	Lower Marker
2	10,380	75.00	10.9	Upper Marker

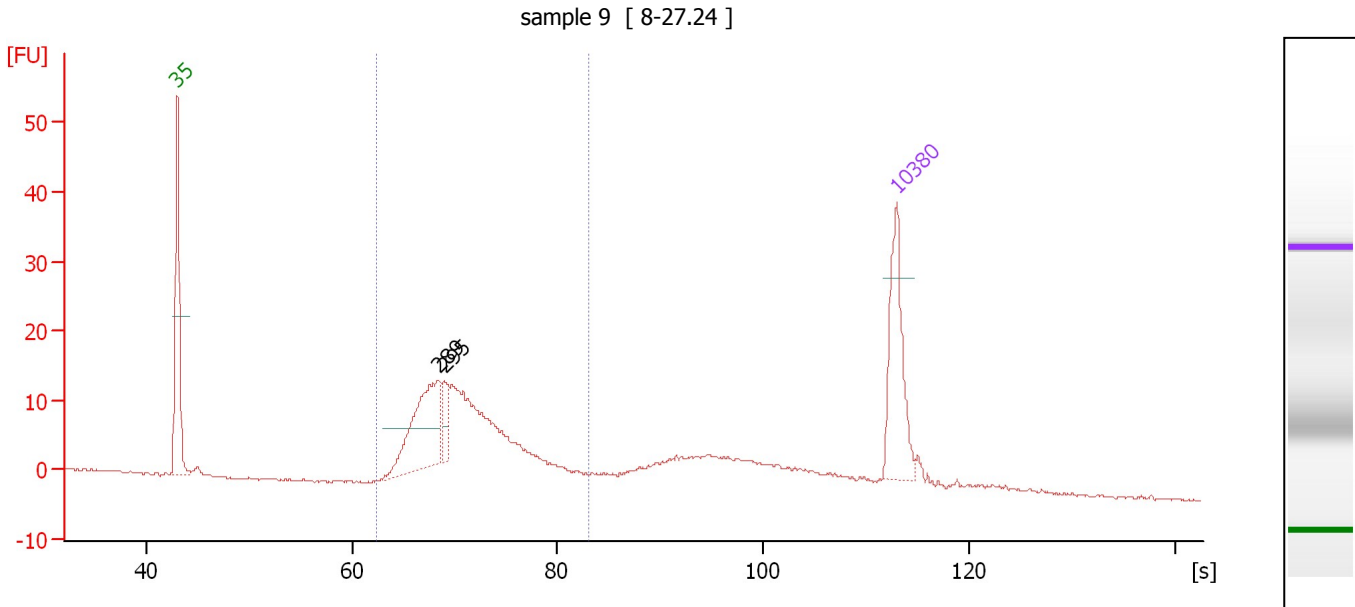
Region table for sample 8 : sample 8

From [s]	To [s]	Average Size [bp]	Molarity [pmol/l]	Conc. [pg/μl]	Corr. Area	% of Total	Size distribution in CV [%]	Color
63.16	81.53	336	462.8	99.43	88.2	66	15.5	Blue

Assay Class: High Sensitivity DNA Assay
 Data Path: C:\...ents and Settings\Bioanalyzer\2013-09-30\2013-09-30_006.xad

Created: 9/30/2013 3:39:51 PM
 Modified: 9/30/2013 4:23:47 PM

Electropherogram Summary Continued ...



Overall Results for sample 9 : sample 9

Number of peaks found: 2 Corr. Area 1: 190.5
 Noise: 0.2

Peak table for sample 9 : sample 9

Peak	Size [bp]	Conc. [pg/μl]	Molarity [pmol/l]	Observations
1	35	125.00	5,411.3	Lower Marker
2	289	133.01	697.7	
3	295	26.10	134.0	
4	10,380	75.00	10.9	Upper Marker

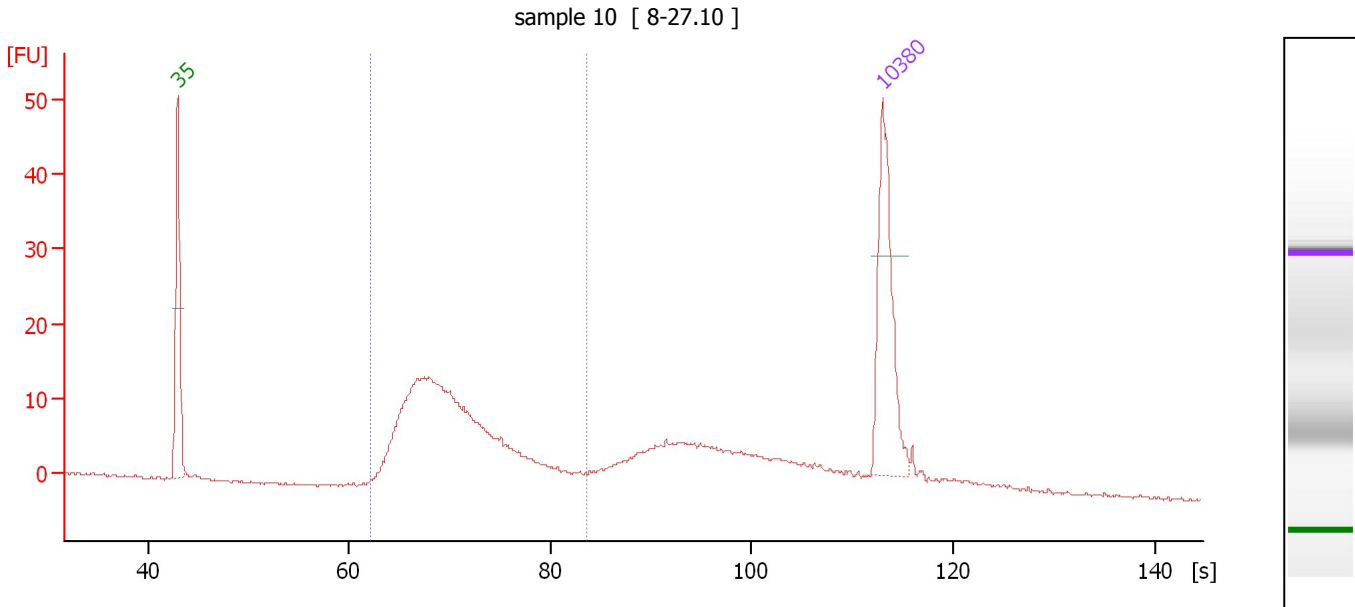
Region table for sample 9 : sample 9

From [s]	To [s]	Average Size [bp]	Molarity [pmol/l]	Conc. [pg/μl]	Corr. Area % of Total	Size distribution in CV [%]	Color
62.44	83.13	325	2,137.8	443.82	190.5 65	16.6	Blue

Assay Class: High Sensitivity DNA Assay
 Data Path: C:\...ents and Settings\Bioanalyzer\2013-09-30\2013-09-30_006.xad

Created: 9/30/2013 3:39:51 PM
 Modified: 9/30/2013 4:23:47 PM

Electropherogram Summary Continued ...



Overall Results for sample 10 : sample 10

Number of peaks found: 0 Corr. Area 1: 195.1
 Noise: 0.2

Peak table for sample 10 : sample 10

Peak	Size [bp]	Conc. [pg/μl]	Molarity [pmol/l]	Observations
1	35	125.00	5,411.3	Lower Marker
2	10,380	75.00	10.9	Upper Marker

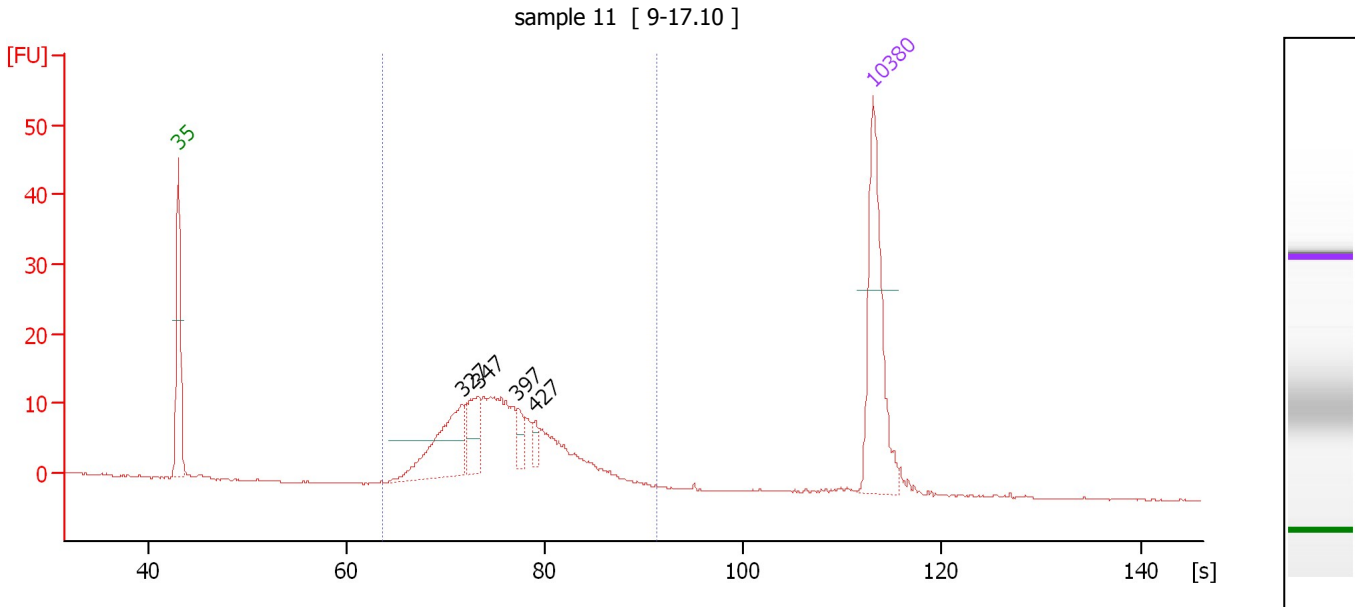
Region table for sample 10 : sample 10

From [s]	To [s]	Average Size [bp]	Molarity [pmol/l]	Conc. [pg/μl]	Corr. Area	% of Total	Size distribution in CV [%]	Color
62.16	83.69	319	1,654.2	334.63	195.1	58	18.6	Blue

Assay Class: High Sensitivity DNA Assay
 Data Path: C:\...ents and Settings\Bioanalyzer\2013-09-30\2013-09-30_006.xad

Created: 9/30/2013 3:39:51 PM
 Modified: 9/30/2013 4:23:47 PM

Electropherogram Summary Continued ...



Overall Results for sample 11 : sample 11

Number of peaks found: 4 Corr. Area 1: 201.1
 Noise: 0.1

Peak table for sample 11 : sample 11

Peak	Size [bp]	Conc. [pg/μl]	Molarity [pmol/l]	Observations
1	35	125.00	5,411.3	Lower Marker
2	327	68.31	316.3	
3	347	31.23	136.2	
4	397	11.40	43.5	
5	427	7.33	26.0	
6	10,380	75.00	10.9	Upper Marker

Region table for sample 11 : sample 11

From [s]	To [s]	Average Size [bp]	Molarity [pmol/l]	Conc. [pg/μl]	Corr. Area % of Total	Size distribution in CV [%]	Color
63.68	91.27	388	1,193.9	291.38	201.1 98	19.7	Blue

Assay Class: High Sensitivity DNA Assay
Data Path: C:\...ents and Settings\Bioanalyzer\2013-09-30\2013-09-30_006.xad

Created: 9/30/2013 3:39:51 PM
Modified: 9/30/2013 4:23:47 PM

Gel Image

