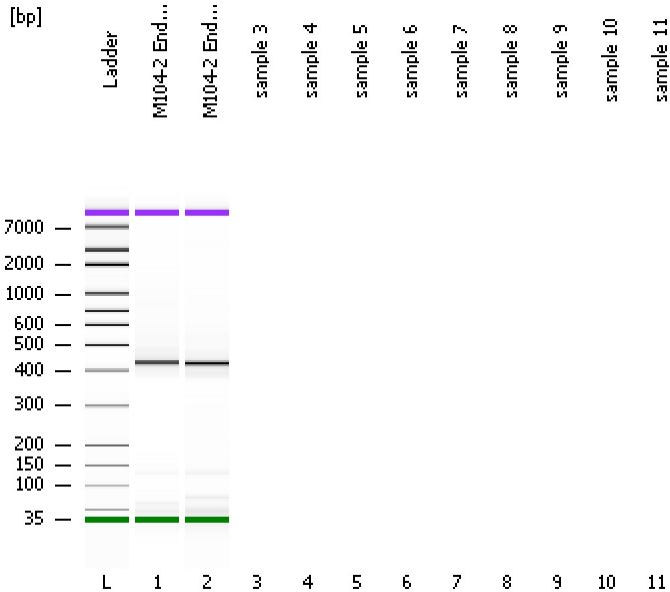


Assay Class: High Sensitivity DNA Assay
Data Path: C:\...ents and Settings\Bioanalyzer\2012-07-12\2012-07-12_006.xad

Created: 7/12/2012 1:00:11 PM
Modified: 7/12/2012 1:15:48 PM

Electrophoresis File Run Summary



Instrument Information:

Instrument Name: DE13701086 Firmware: C.01.069
Serial#: DE13701086 Type: G2938B

Assay Information:

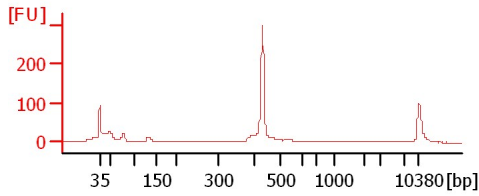
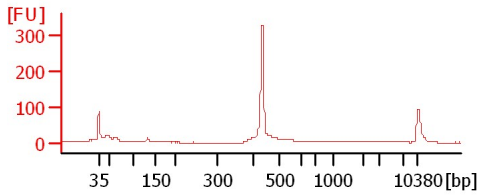
Assay Origin Path: C:\Program Files\Agilent\2100 bioanalyzer\2100 expert\assays\dsDNA\High Sensitivity DNA.xsy
Assay Class: High Sensitivity DNA Assay
Version: 1.03
Assay Comments: Copyright © 2003-2010 Agilent Technologies

Chip Information:

Chip Lot #:
Reagent Kit Lot #:
Chip Comments:

M104-2 Endo-1

M104-2 Endo-2



Assay Class: High Sensitivity DNA Assay
Data Path: C:\...ents and Settings\Bioanalyzer\2012-07-12\2012-07-12_006.xad

Created: 7/12/2012 1:00:11 PM
Modified: 7/12/2012 1:15:48 PM

Electrophoresis File Run Summary (Chip Summary)

| Sample Name | Sample Comment | Rest. Digest | Status | Observation | Result Label | Result Color |
|---------------|----------------|--------------------------|--------|-------------|--------------|--------------|
| M104-2 Endo-1 | | <input type="checkbox"/> | ✓ | | | |
| M104-2 Endo-2 | | <input type="checkbox"/> | ✓ | | | |
| sample 3 | | <input type="checkbox"/> | | | | |
| sample 4 | | <input type="checkbox"/> | | | | |
| sample 5 | | <input type="checkbox"/> | | | | |
| sample 6 | | <input type="checkbox"/> | | | | |
| sample 7 | | <input type="checkbox"/> | | | | |
| sample 8 | | <input type="checkbox"/> | | | | |
| sample 9 | | <input type="checkbox"/> | | | | |
| sample 10 | | <input type="checkbox"/> | | | | |
| sample 11 | | <input type="checkbox"/> | | | | |
| Ladder | | <input type="checkbox"/> | ✓ | | | |

Chip Lot #

Reagent Kit Lot #

Chip Comments :

Assay Class: High Sensitivity DNA Assay
Data Path: C:\...ents and Settings\Bioanalyzer\2012-07-12\2012-07-12_006.xad

Created: 7/12/2012 1:00:11 PM
Modified: 7/12/2012 1:15:48 PM

Electrophoresis Assay Details

General Analysis Settings

Number of Available Sample and Ladder Wells (Max.) : 12
Minimum Visible Range [s] : 32
Maximum Visible Range [s] : 138
Start Analysis Time Range [s] : 33
End Analysis Time Range [s] : 137.5
Ladder Concentration [pg/μl] : 1950
Uses Standard Area for Ladder Fragments
Lower Marker Concentration [pg/μl] : 125
Upper Marker Concentration [pg/μl] : 75
Used Upper Marker for Quantitation
Standard Curve Fit is Point to Point
Show Data Aligned to Lower and Upper Marker

Integrator Settings

Integration Start Time [s] : 33.05
Integration End Time [s] : 137
Slope Threshold : 0.8
Height Threshold [FU] : 5
Area Threshold : 0.1
Width Threshold [s] : 0.6
Baseline Plateau [s] : 0.5

Filter Settings

Filter Width [s] : 0.5
Polynomial Order : 4

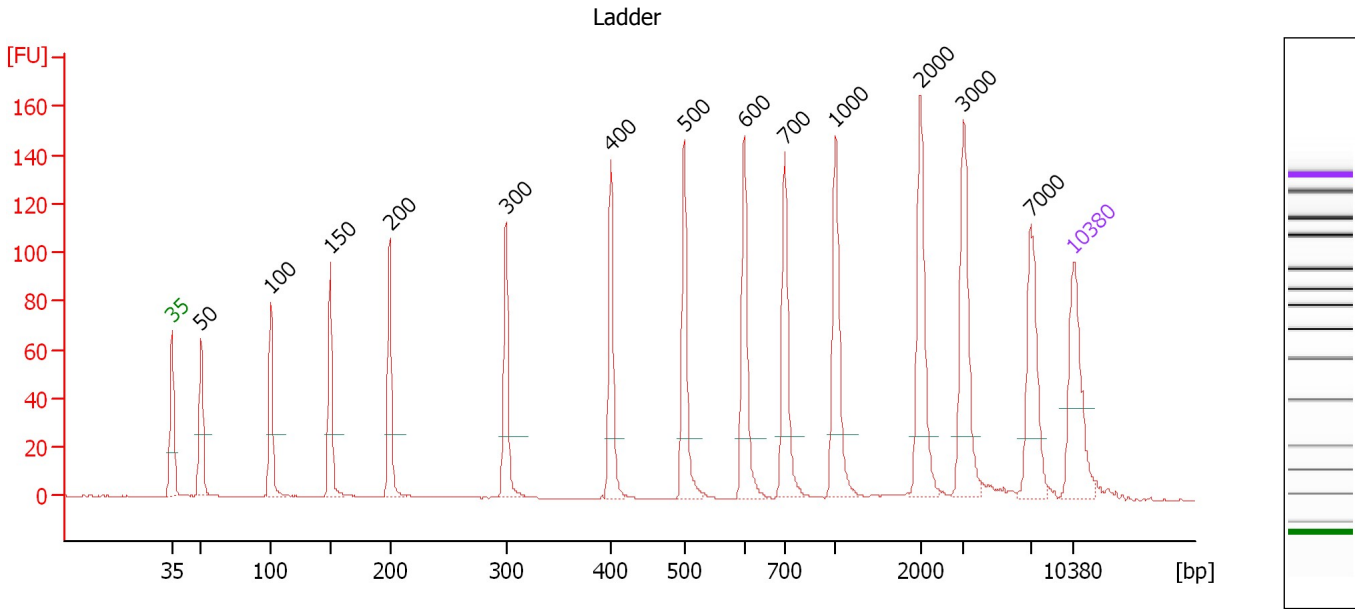
Ladder

| Ladder Peak | Size | Area |
|-------------|-------|------|
| 1 | 35 | 160 |
| 2 | 50 | 210 |
| 3 | 100 | 208 |
| 4 | 150 | 221 |
| 5 | 200 | 242 |
| 6 | 300 | 270 |
| 7 | 400 | 305 |
| 8 | 500 | 306 |
| 9 | 600 | 336 |
| 10 | 700 | 321 |
| 11 | 1000 | 366 |
| 12 | 2000 | 413 |
| 13 | 3000 | 411 |
| 14 | 7000 | 400 |
| 15 | 10380 | 214 |

Assay Class: High Sensitivity DNA Assay
 Data Path: C:\...ents and Settings\Bioanalyzer\2012-07-12\2012-07-12_006.xad

Created: 7/12/2012 1:00:11 PM
 Modified: 7/12/2012 1:15:48 PM

Electropherogram Summary



Overall Results for Ladder

Noise: 0.1

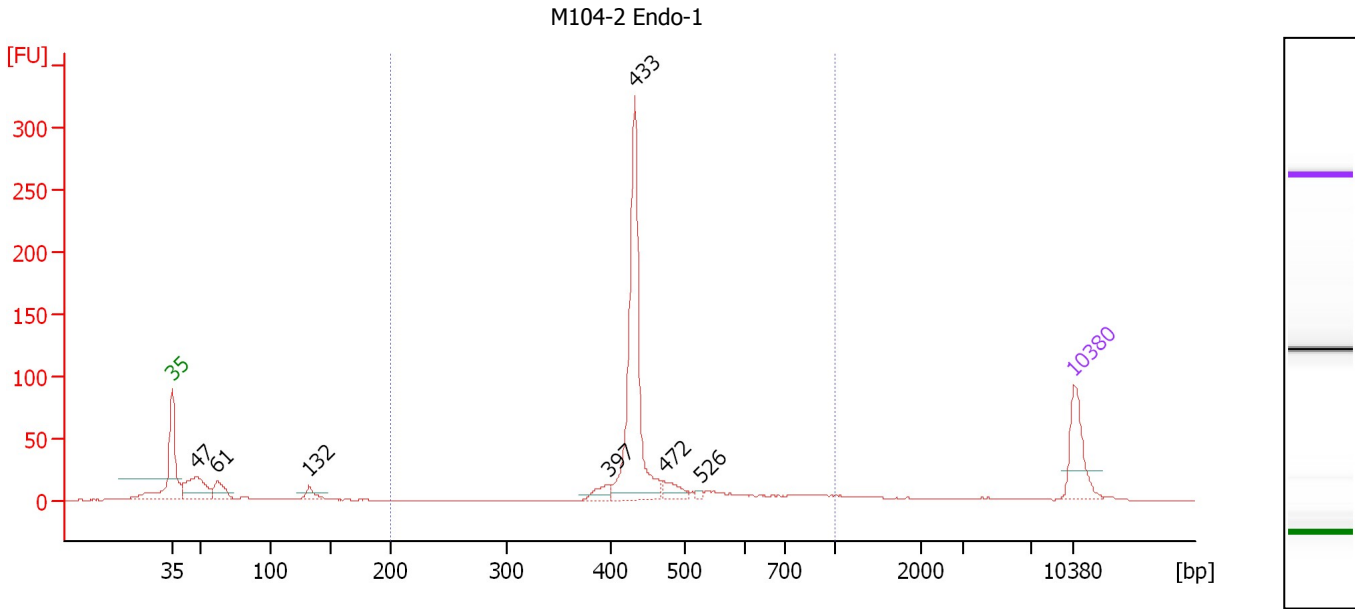
Peak table for Ladder

| Peak | Size [bp] | Conc. [pg/μl] | Molarity [pmol/l] | Observations |
|------|-----------|---------------|-------------------|--------------|
| 1 | 35 | 125.00 | 5,411.3 | Lower Marker |
| 2 | 50 | 150.00 | 4,545.5 | Ladder Peak |
| 3 | 100 | 150.00 | 2,272.7 | Ladder Peak |
| 4 | 150 | 150.00 | 1,515.2 | Ladder Peak |
| 5 | 200 | 150.00 | 1,136.4 | Ladder Peak |
| 6 | 300 | 150.00 | 757.6 | Ladder Peak |
| 7 | 400 | 150.00 | 568.2 | Ladder Peak |
| 8 | 500 | 150.00 | 454.5 | Ladder Peak |
| 9 | 600 | 150.00 | 378.8 | Ladder Peak |
| 10 | 700 | 150.00 | 324.7 | Ladder Peak |
| 11 | 1,000 | 150.00 | 227.3 | Ladder Peak |
| 12 | 2,000 | 150.00 | 113.6 | Ladder Peak |
| 13 | 3,000 | 150.00 | 75.8 | Ladder Peak |
| 14 | 7,000 | 150.00 | 32.5 | Ladder Peak |
| 15 | 10,380 | 75.00 | 10.9 | Upper Marker |

Assay Class: High Sensitivity DNA Assay
 Data Path: C:\...ents and Settings\Bioanalyzer\2012-07-12\2012-07-12_006.xad

Created: 7/12/2012 1:00:11 PM
 Modified: 7/12/2012 1:15:48 PM

Electropherogram Summary Continued ...



Overall Results for sample 1 : M104-2 Endo-1

Number of peaks found: 7 Corr. Area 1: 511.0
 Noise: 0.1

Peak table for sample 1 : M104-2 Endo-1

| Peak | Size [bp] | Conc. [pg/μl] | Molarity [pmol/l] | Observations |
|------|-----------|---------------|-------------------|--------------|
| 1 | 35 | 125.00 | 5,411.3 | Lower Marker |
| 2 | 47 | 126.53 | 4,038.3 | |
| 3 | 61 | 55.78 | 1,377.2 | |
| 4 | 132 | 27.39 | 314.7 | |
| 5 | 397 | 26.04 | 99.3 | |
| 6 | 433 | 425.30 | 1,487.9 | |
| 7 | 472 | 30.19 | 96.9 | |
| 8 | 526 | 4.30 | 12.4 | |
| 9 | 10,380 | 75.00 | 10.9 | Upper Marker |

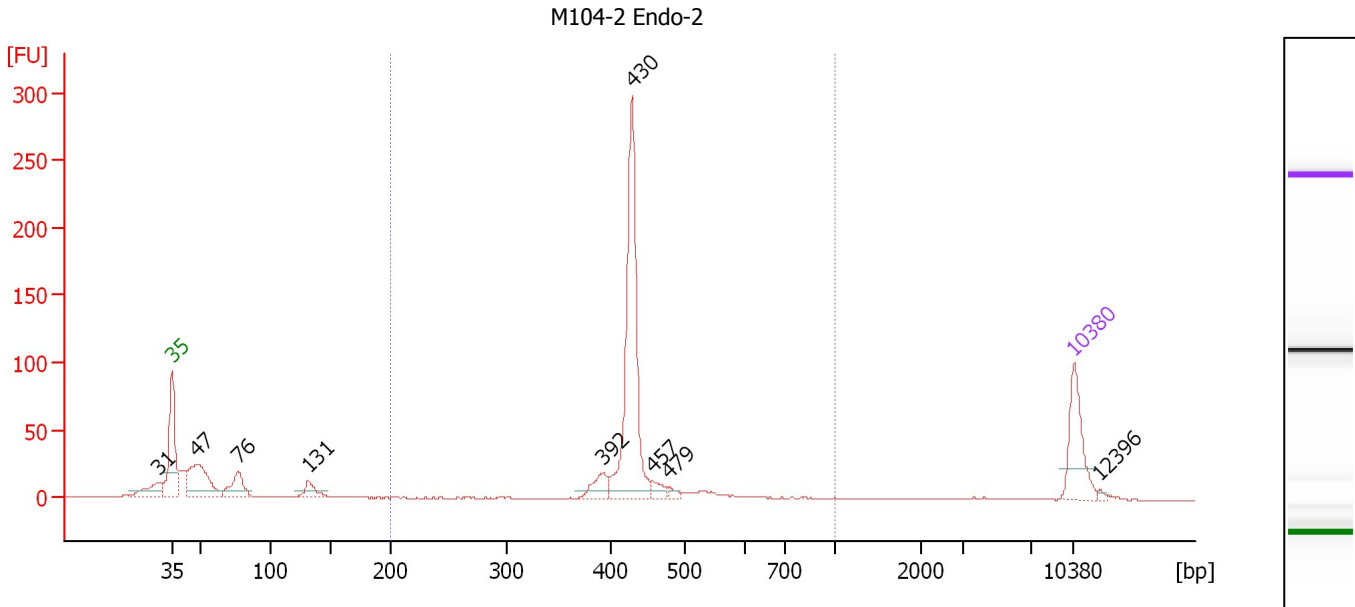
Region table for sample 1 : M104-2 Endo-1

| From [bp] | To [bp] | Average Size [bp] | Molarity [pmol/l] | Conc. [pg/μl] | Corr. Area | % of Total | Size distribution in CV [%] | Color |
|-----------|---------|-------------------|-------------------|---------------|------------|------------|-----------------------------|-------|
| 200 | 1,000 | 467 | 1,894.5 | 562.95 | 511.0 | 72 | 20.9 | Blue |

Assay Class: High Sensitivity DNA Assay
 Data Path: C:\...ents and Settings\Bioanalyzer\2012-07-12\2012-07-12_006.xad

Created: 7/12/2012 1:00:11 PM
 Modified: 7/12/2012 1:15:48 PM

Electropherogram Summary Continued ...



Overall Results for sample 2 : M104-2 Endo-2

Number of peaks found: 9 Corr. Area 1: 475.1
 Noise: 0.3

Peak table for sample 2 : M104-2 Endo-2

| Peak | Size [bp] | Conc. [pg/μl] | Molarity [pmol/l] | Observations |
|------|-----------|---------------|-------------------|--------------|
| 1 | 31 | 0.00 | 0.0 | |
| 2 | 35 | 125.00 | 5,411.3 | Lower Marker |
| 3 | 47 | 158.78 | 5,105.8 | |
| 4 | 76 | 65.18 | 1,293.0 | |
| 5 | 131 | 31.33 | 361.7 | |
| 6 | 392 | 33.74 | 130.5 | |
| 7 | 430 | 364.91 | 1,286.3 | |
| 8 | 457 | 16.44 | 54.5 | |
| 9 | 479 | 8.07 | 25.5 | |
| 10 | 10,380 | 75.00 | 10.9 | Upper Marker |
| 11 | 12,396 | 0.00 | 0.0 | |

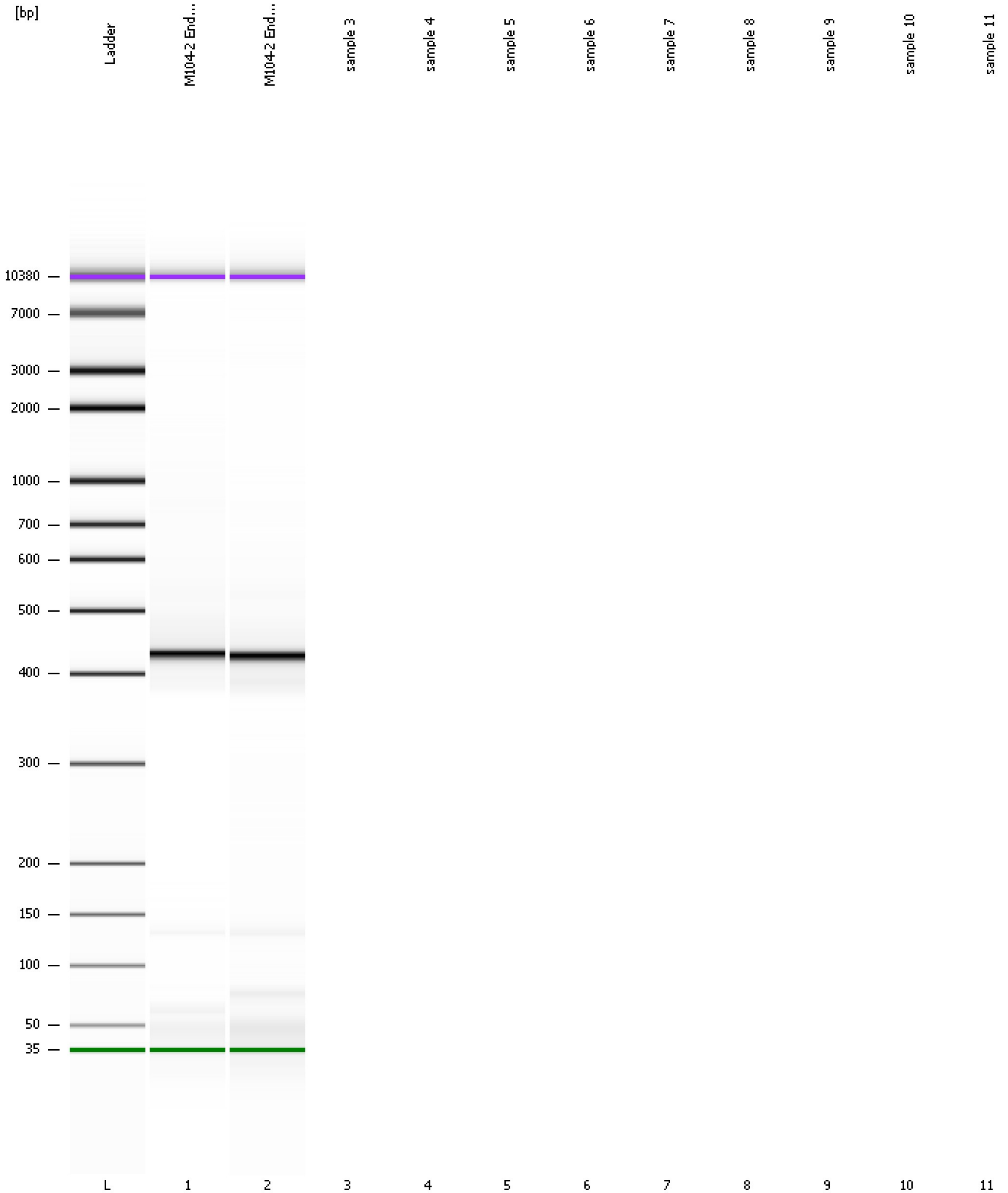
Region table for sample 2 : M104-2 Endo-2

| From [bp] | To [bp] | Average Size [bp] | Molarity [pmol/l] | Conc. [pg/μl] | Corr. Area | % of Total | Size distribution in CV [%] | Color |
|-----------|---------|-------------------|-------------------|---------------|------------|------------|-----------------------------|-------|
| 200 | 1,000 | 440 | 1,699.0 | 481.04 | 475.1 | 61 | 15.3 | Blue |

Assay Class: High Sensitivity DNA Assay
Data Path: C:\...ents and Settings\Bioanalyzer\2012-07-12\2012-07-12_006.xad

Created: 7/12/2012 1:00:11 PM
Modified: 7/12/2012 1:15:48 PM

Gel Image



Assay Class: High Sensitivity DNA Assay
Data Path: C:\...ents and Settings\Bioanalyzer\2012-07-12\2012-07-12_006.xad

Created: 7/12/2012 1:00:11 PM
Modified: 7/12/2012 1:15:48 PM

Invalid Samples

Sample 3 has not been run, no results available.

Sample 4 has not been run, no results available.

Sample 5 has not been run, no results available.

Sample 6 has not been run, no results available.

Sample 7 has not been run, no results available.

Sample 8 has not been run, no results available.

Sample 9 has not been run, no results available.

Sample 10 has not been run, no results available.

Sample 11 has not been run, no results available.

Assay Class: High Sensitivity DNA Assay
 Data Path: C:\...ents and Settings\Bioanalyzer\2012-07-12\2012-07-12_006.xad

Created: 7/12/2012 1:00:11 PM
 Modified: 7/12/2012 1:15:48 PM

Run Logbook

| Description | Number | Source | Category | Sub Category | Time | Time Zone | User | Host |
|---|--------|------------|----------|--------------|----------------------|-------------------------------------|----------|----------|
| Run ended on port 1 (Number of wells acquired: 3) | | Instrument | Run | | 7/12/2012 1:15:46 PM | (GMT --07:00) Pacific Standard Time | UC Davis | D8XSMGH1 |
| Run started on port 1 (File: C:\Documents and Settings\Bioanalyzer\2012-07-12\2012-07-12_006.xad) | | Instrument | Run | | 7/12/2012 1:00:16 PM | (GMT --07:00) Pacific Standard Time | UC Davis | D8XSMGH1 |
| Product Number : G2938B | | Instrument | Run | | 7/12/2012 1:00:16 PM | (GMT --07:00) Pacific Standard Time | UC Davis | D8XSMGH1 |
| Name : | | Instrument | Run | | 7/12/2012 1:00:16 PM | (GMT --07:00) Pacific Standard Time | UC Davis | D8XSMGH1 |
| Vendor : Agilent Technologies | | Instrument | Run | | 7/12/2012 1:00:16 PM | (GMT --07:00) Pacific Standard Time | UC Davis | D8XSMGH1 |
| Serial# : DE13701086 | | Instrument | Run | | 7/12/2012 1:00:16 PM | (GMT --07:00) Pacific Standard Time | UC Davis | D8XSMGH1 |
| Firmware : C.01.069 | | Instrument | Run | | 7/12/2012 1:00:16 PM | (GMT --07:00) Pacific Standard Time | UC Davis | D8XSMGH1 |
| Cartridge : Electrode | | Instrument | Run | | 7/12/2012 1:00:16 PM | (GMT --07:00) Pacific Standard Time | UC Davis | D8XSMGH1 |