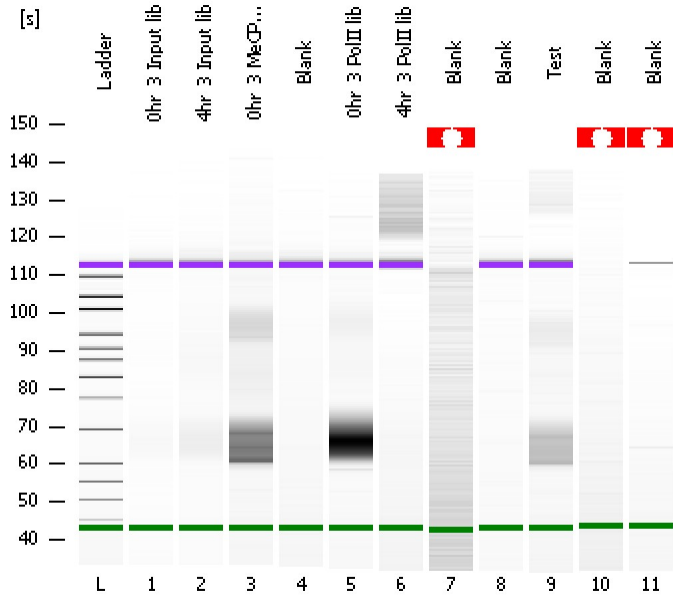


Assay Class: High Sensitivity DNA Assay
Data Path: C:\...ents and Settings\Bioanalyzer\2012-07-12\2012-07-12_007.xad

Created: 7/12/2012 3:04:07 PM
Modified: 7/12/2012 3:44:49 PM

Electrophoresis File Run Summary



Instrument Information:

Instrument Name: DE13701086 Firmware: C.01.069
Serial#: DE13701086 Type: G2938B

Assay Information:

Assay Origin Path: C:\Program Files\Agilent\2100 bioanalyzer\2100 expert\assays\dsDNA\High Sensitivity DNA.xsy
Assay Class: High Sensitivity DNA Assay
Version: 1.03
Assay Comments: Copyright © 2003-2010 Agilent Technologies

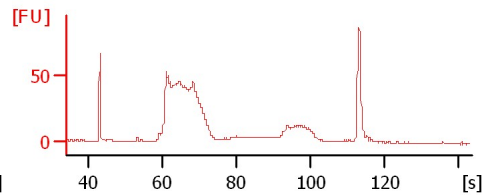
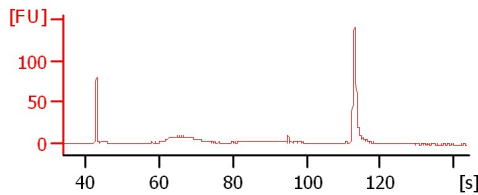
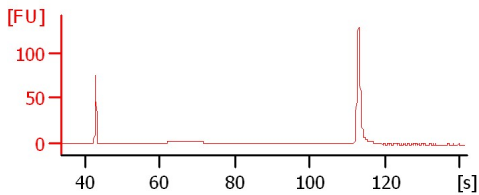
Chip Information:

Chip Lot #:
Reagent Kit Lot #:
Chip Comments:

Ohr_3 Input lib

4hr_3 Input lib

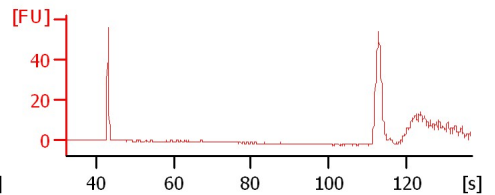
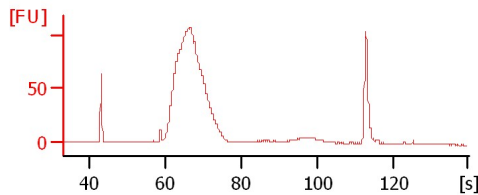
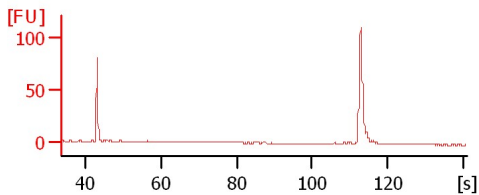
Ohr_3 MeCP2 lib



Blank

Ohr_3 PolIII lib

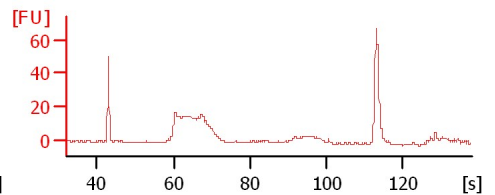
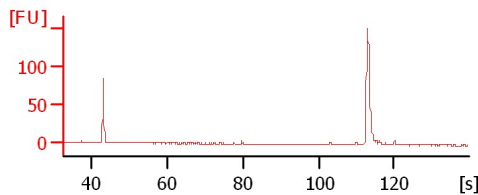
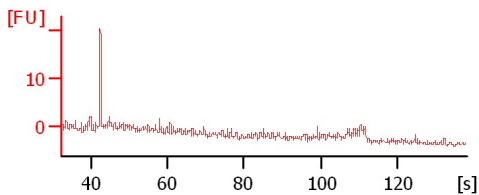
4hr_3 PolIII lib



Blank

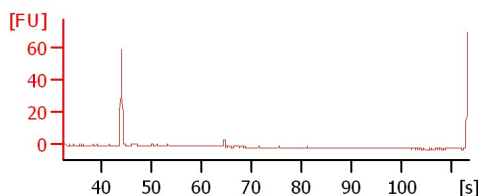
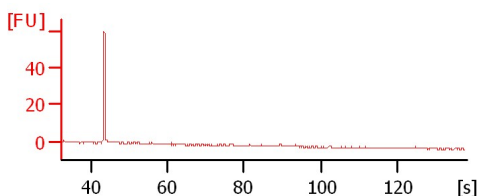
Blank

Test



Blank

Blank



Assay Class: High Sensitivity DNA Assay
 Data Path: C:\...ents and Settings\Bioanalyzer\2012-07-12\2012-07-12_007.xad

Created: 7/12/2012 3:04:07 PM
 Modified: 7/12/2012 3:44:49 PM

Electrophoresis File Run Summary (Chip Summary)

Sample Name	Sample Comment	Rest. Digest	Status	Observation	Result Label	Result Color
0hr_3 Input lib		<input type="checkbox"/>	✓			
4hr_3 Input lib		<input type="checkbox"/>	✓			
0hr_3 MeCP2 lib		<input type="checkbox"/>	✓			
Blank		<input type="checkbox"/>	✓			
0hr_3 PolII lib		<input type="checkbox"/>	✓			
4hr_3 PolII lib		<input type="checkbox"/>	✓			
Blank		<input type="checkbox"/>	✓			
Blank		<input type="checkbox"/>	✓			
Test		<input type="checkbox"/>	✓			
Blank		<input type="checkbox"/>	✓			
Blank		<input type="checkbox"/>	✗			
Ladder		<input type="checkbox"/>	✓			

Chip Lot #

Reagent Kit Lot #

Chip Comments :

Assay Class: High Sensitivity DNA Assay
Data Path: C:\...ents and Settings\Bioanalyzer\2012-07-12\2012-07-12_007.xad

Created: 7/12/2012 3:04:07 PM
Modified: 7/12/2012 3:44:49 PM

Electrophoresis Assay Details

General Analysis Settings

Number of Available Sample and Ladder Wells (Max.) : 12
Minimum Visible Range [s] : 32
Maximum Visible Range [s] : 138
Start Analysis Time Range [s] : 33
End Analysis Time Range [s] : 137.5
Ladder Concentration [pg/μl] : 1950
Uses Standard Area for Ladder Fragments
Lower Marker Concentration [pg/μl] : 125
Upper Marker Concentration [pg/μl] : 75
Used Upper Marker for Quantitation
Standard Curve Fit is Point to Point
Show Data Aligned to Lower and Upper Marker

Integrator Settings

Integration Start Time [s] : 33.05
Integration End Time [s] : 137
Slope Threshold : 0.8
Height Threshold [FU] : 5
Area Threshold : 0.1
Width Threshold [s] : 0.6
Baseline Plateau [s] : 0.5

Filter Settings

Filter Width [s] : 0.5
Polynomial Order : 4

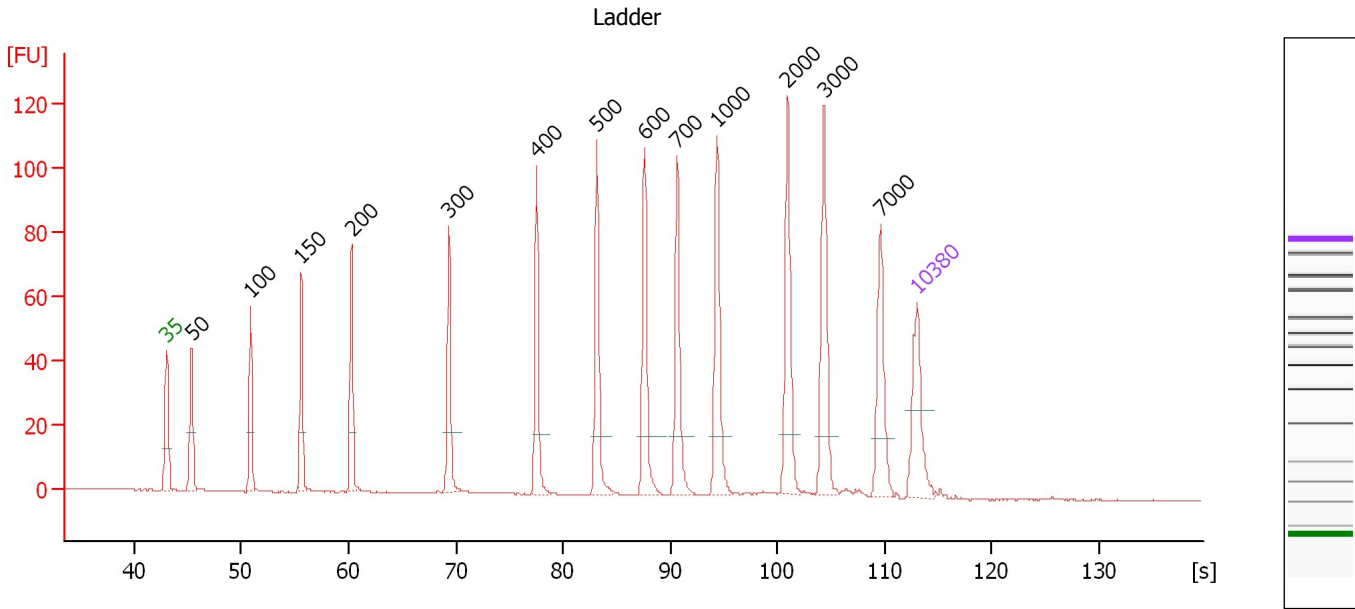
Ladder

Ladder Peak	Size	Area
1	35	160
2	50	210
3	100	208
4	150	221
5	200	242
6	300	270
7	400	305
8	500	306
9	600	336
10	700	321
11	1000	366
12	2000	413
13	3000	411
14	7000	400
15	10380	214

Assay Class: High Sensitivity DNA Assay
 Data Path: C:\...ents and Settings\Bioanalyzer\2012-07-12\2012-07-12_007.xad

Created: 7/12/2012 3:04:07 PM
 Modified: 7/12/2012 3:44:49 PM

Electropherogram Summary



Overall Results for Ladder

Noise: 0.1

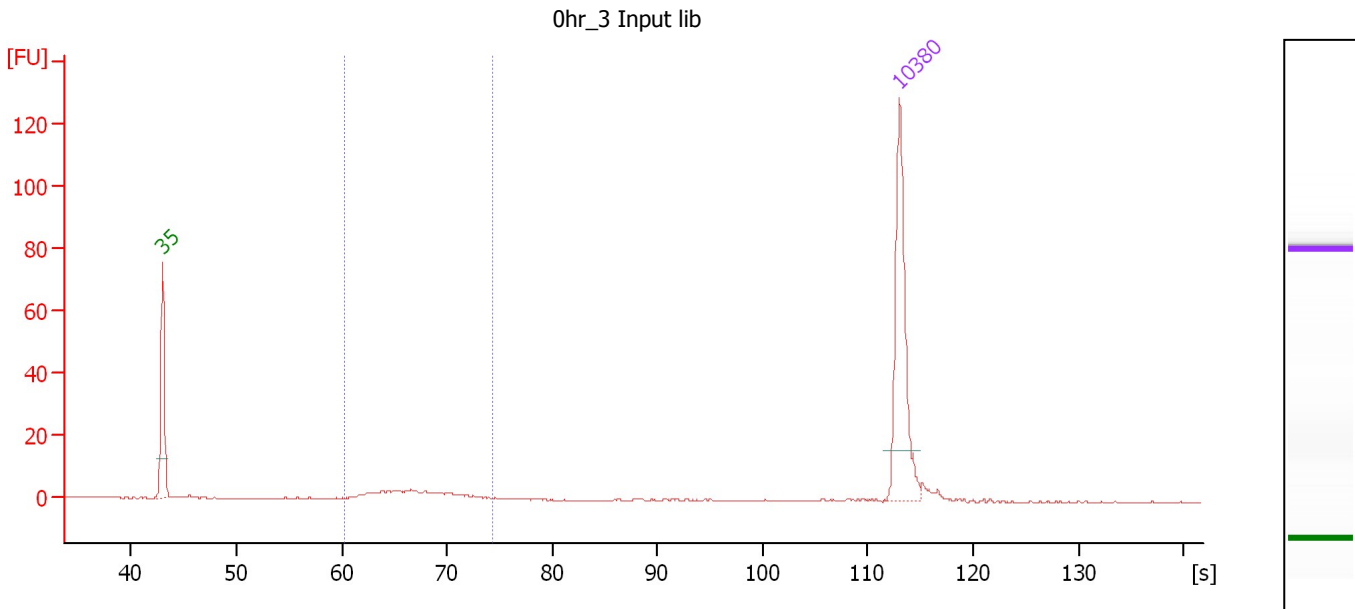
Peak table for Ladder

Peak	Size [bp]	Conc. [pg/µl]	Molarity [pmol/l]	Observations
1	35	125.00	5,411.3	Lower Marker
2	50	150.00	4,545.5	Ladder Peak
3	100	150.00	2,272.7	Ladder Peak
4	150	150.00	1,515.2	Ladder Peak
5	200	150.00	1,136.4	Ladder Peak
6	300	150.00	757.6	Ladder Peak
7	400	150.00	568.2	Ladder Peak
8	500	150.00	454.5	Ladder Peak
9	600	150.00	378.8	Ladder Peak
10	700	150.00	324.7	Ladder Peak
11	1,000	150.00	227.3	Ladder Peak
12	2,000	150.00	113.6	Ladder Peak
13	3,000	150.00	75.8	Ladder Peak
14	7,000	150.00	32.5	Ladder Peak
15	10,380	75.00	10.9	Upper Marker

Assay Class: High Sensitivity DNA Assay
 Data Path: C:\...ents and Settings\Bioanalyzer\2012-07-12\2012-07-12_007.xad

Created: 7/12/2012 3:04:07 PM
 Modified: 7/12/2012 3:44:49 PM

Electropherogram Summary Continued ...



Overall Results for sample 1 : 0hr_3 Input lib

Number of peaks found: 0 Corr. Area 1: 32.5
 Noise: 0.1

Peak table for sample 1 : 0hr_3 Input lib

Peak	Size [bp]	Conc. [pg/μl]	Molarity [pmol/l]	Observations
1	35	125.00	5,411.3	Lower Marker
2	10,380	75.00	10.9	Upper Marker

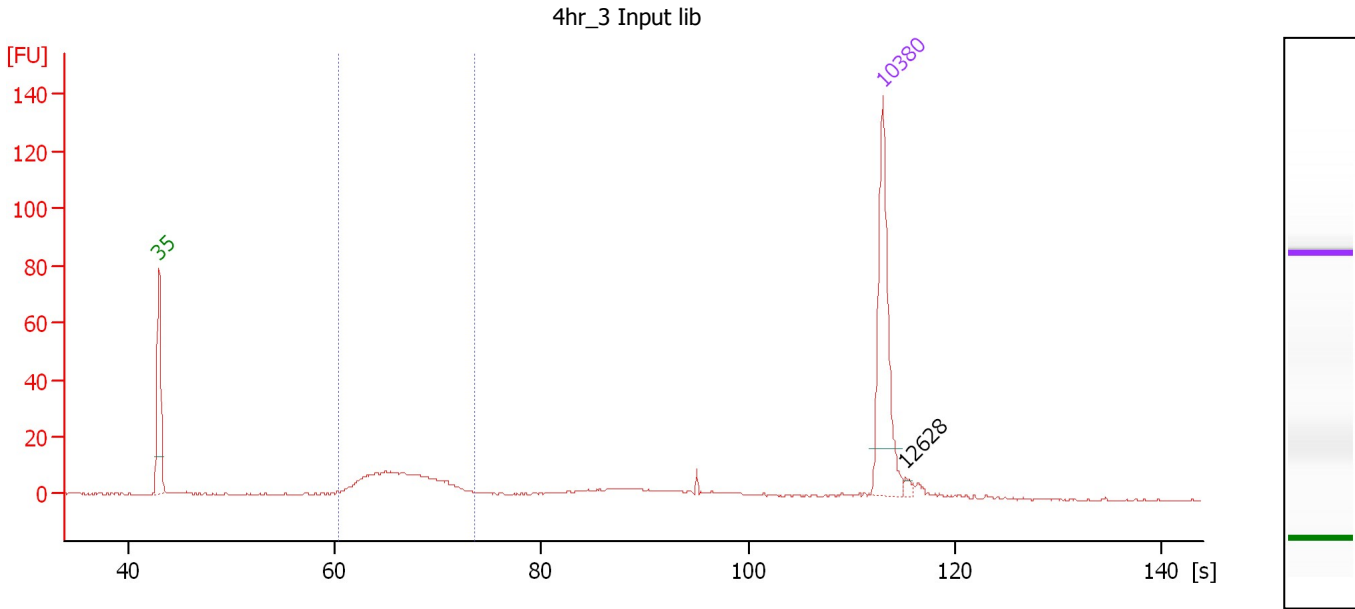
Region table for sample 1 : 0hr_3 Input lib

From [bp]	To [bp]	Average Size [bp]	Molarity [pmol/l]	Conc. [pg/μl]	Corr. Area	% of Total	Size distribution in CV [%]	Color
200	360	274	179.1	31.91	32.5	67	12.9	Blue

Assay Class: High Sensitivity DNA Assay
 Data Path: C:\...ents and Settings\Bioanalyzer\2012-07-12\2012-07-12_007.xad

Created: 7/12/2012 3:04:07 PM
 Modified: 7/12/2012 3:44:49 PM

Electropherogram Summary Continued ...



Overall Results for sample 2 : 4hr 3 Input lib

Number of peaks found: 1 Corr. Area 1: 111.4
 Noise: 0.2

Peak table for sample 2 : 4hr 3 Input lib

Peak	Size [bp]	Conc. [pg/μl]	Molarity [pmol/l]	Observations
1	35	125.00	5,411.3	Lower Marker
2	10,380	75.00	10.9	Upper Marker
3	12,628	0.00	0.0	

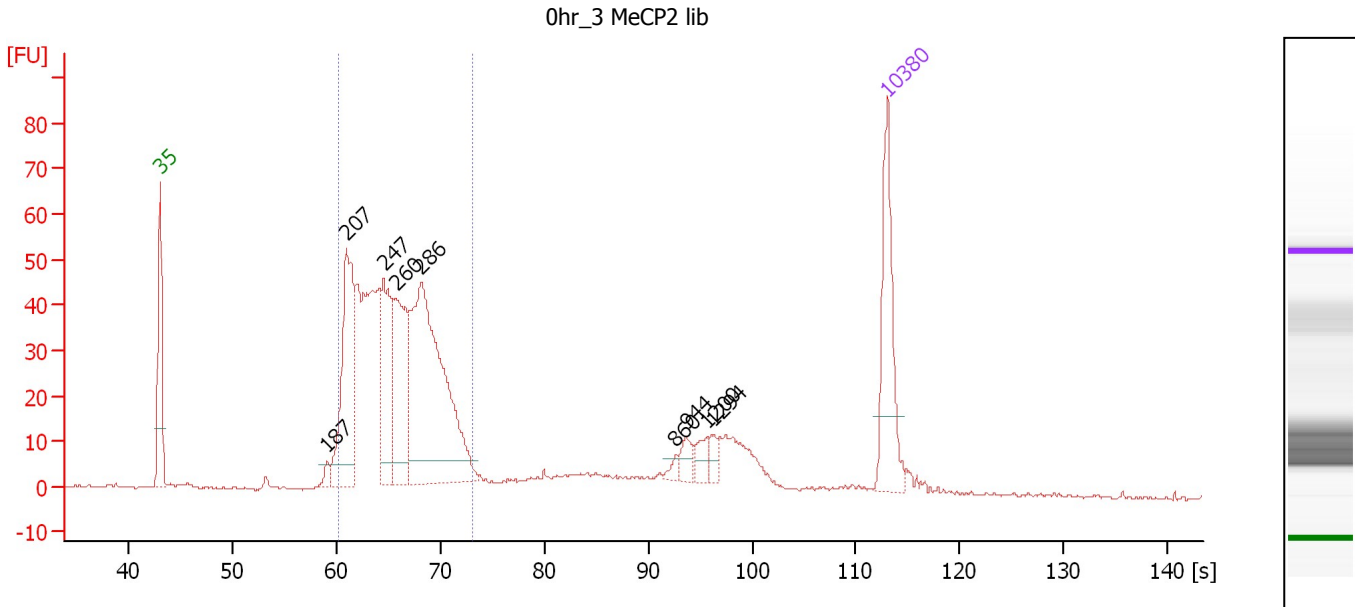
Region table for sample 2 : 4hr 3 Input lib

From [bp]	To [bp]	Average Size [bp]	Molarity [pmol/l]	Conc. [pg/μl]	Corr. Area	% of Total	Size distribution in CV [%]	Color
200	351	270	569.9	100.23	111.4	53	12.8	Blue

Assay Class: High Sensitivity DNA Assay
 Data Path: C:\...ents and Settings\Bioanalyzer\2012-07-12\2012-07-12_007.xad

Created: 7/12/2012 3:04:07 PM
 Modified: 7/12/2012 3:44:49 PM

Electropherogram Summary Continued ...



Overall Results for sample 3 : 0hr_3 MeCP2 lib

Number of peaks found: 9 Corr. Area 1: 703.7
 Noise: 0.3

Peak table for sample 3 : 0hr_3 MeCP2 lib

Peak	Size [bp]	Conc. [pg/μl]	Molarity [pmol/l]	Observations
1	35	125.00	5,411.3	Lower Marker
2	187	9.32	75.4	
3	207	175.26	1,281.6	
4	247	109.97	674.3	
5	260	129.94	758.3	
6	286	326.51	1,727.2	
7	860	5.61	9.9	
8	944	12.48	20.0	
9	1,200	11.82	14.9	
10	1,294	9.22	10.8	
11	10,380	75.00	10.9	Upper Marker

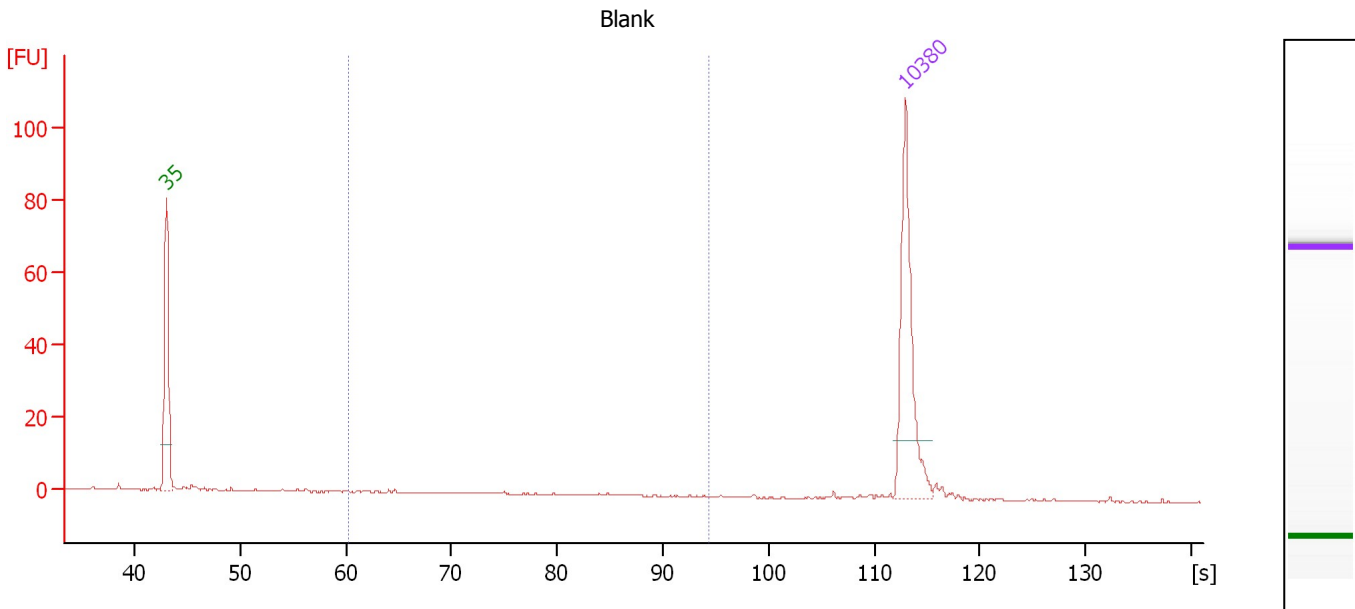
Region table for sample 3 : 0hr_3 MeCP2 lib

From [bp]	To [bp]	Average Size [bp]	Molarity [pmol/l]	Conc. [pg/μl]	Corr. Area	% of Total	Size distribution in CV [%]	Color
200	345	260	5,931.3	1,004.85	703.7	74	14.0	Blue

Assay Class: High Sensitivity DNA Assay
 Data Path: C:\...ents and Settings\Bioanalyzer\2012-07-12\2012-07-12_007.xad

Created: 7/12/2012 3:04:07 PM
 Modified: 7/12/2012 3:44:49 PM

Electropherogram Summary Continued ...



Overall Results for sample 4 : Blank

Number of peaks found: 0 Corr. Area 1: 4.8
 Noise: 0.2

Peak table for sample 4 : Blank

Peak	Size [bp]	Conc. [pg/μl]	Molarity [pmol/l]	Observations
1	35	125.00	5,411.3	Lower Marker
2	10,380	75.00	10.9	Upper Marker

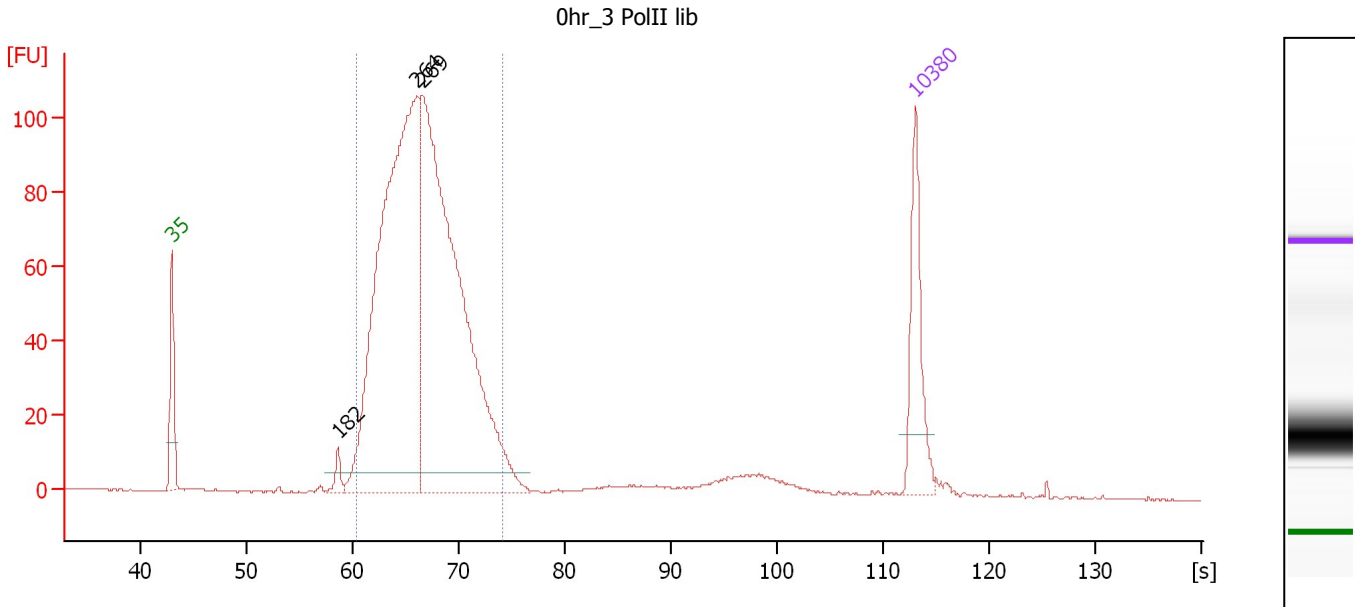
Region table for sample 4 : Blank

From [bp]	To [bp]	Average Size [bp]	Molarity [pmol/l]	Conc. [pg/μl]	Corr. Area	% of Total	Size distribution in CV [%]	Color
200	1,000	405	22.9	4.88	4.8	19	43.2	Blue

Assay Class: High Sensitivity DNA Assay
 Data Path: C:\...ents and Settings\Bioanalyzer\2012-07-12\2012-07-12_007.xad

Created: 7/12/2012 3:04:07 PM
 Modified: 7/12/2012 3:44:49 PM

Electropherogram Summary Continued ...



Overall Results for sample 5 : Ohr_3 PolII lib

Number of peaks found: 3 Corr. Area 1: 1,332.3
 Noise: 0.1

Peak table for sample 5 : Ohr_3 PolII lib

Peak	Size [bp]	Conc. [pg/μl]	Molarity [pmol/l]	Observations
1	35	125.00	5,411.3	Lower Marker
2	182	15.70	130.4	
3	264	810.57	4,657.4	
4	269	820.45	4,626.2	
5	10,380	75.00	10.9	Upper Marker

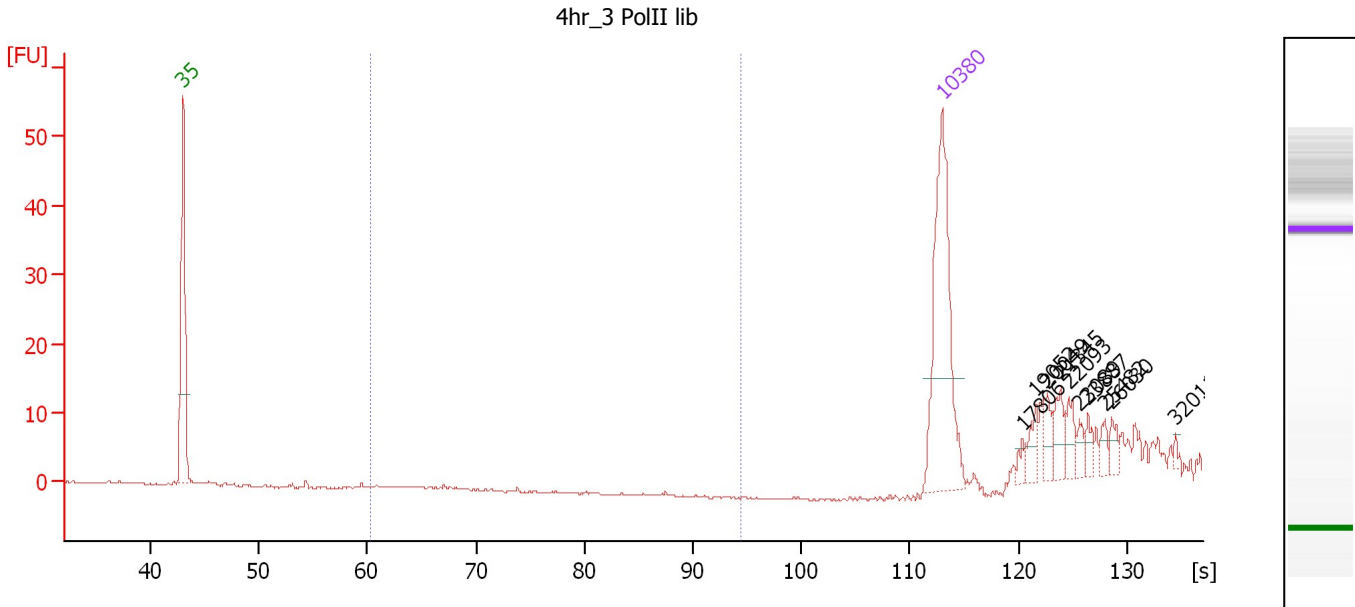
Region table for sample 5 : Ohr_3 PolII lib

From [bp]	To [bp]	Average Size [bp]	Molarity [pmol/l]	Conc. [pg/μl]	Corr. Area	% of Total	Size distribution in CV [%]	Color
200	359	269	9,109.1	1,597.91	1,332.3	91	12.9	Blue

Assay Class: High Sensitivity DNA Assay
 Data Path: C:\...ents and Settings\Bioanalyzer\2012-07-12\2012-07-12_007.xad

Created: 7/12/2012 3:04:07 PM
 Modified: 7/12/2012 3:44:49 PM

Electropherogram Summary Continued ...



Overall Results for sample 6 : 4hr 3 PolII lib

Number of peaks found: 10 Corr. Area 1: 0.0
 Noise: 0.2

Peak table for sample 6 : 4hr 3 PolII lib

Peak	Size [bp]	Conc. [pg/μl]	Molarity [pmol/l]	Observations
1	35	125.00	5,411.3	Lower Marker
2	10,380	75.00	10.9	Upper Marker
3	17,806	0.00	0.0	
4	19,052	0.00	0.0	
5	20,049	0.00	0.0	
6	21,345	0.00	0.0	
7	22,093	0.00	0.0	
8	23,089	0.00	0.0	
9	23,887	0.00	0.0	
10	25,482	0.00	0.0	
11	26,030	0.00	0.0	
12	32,011	0.00	0.0	

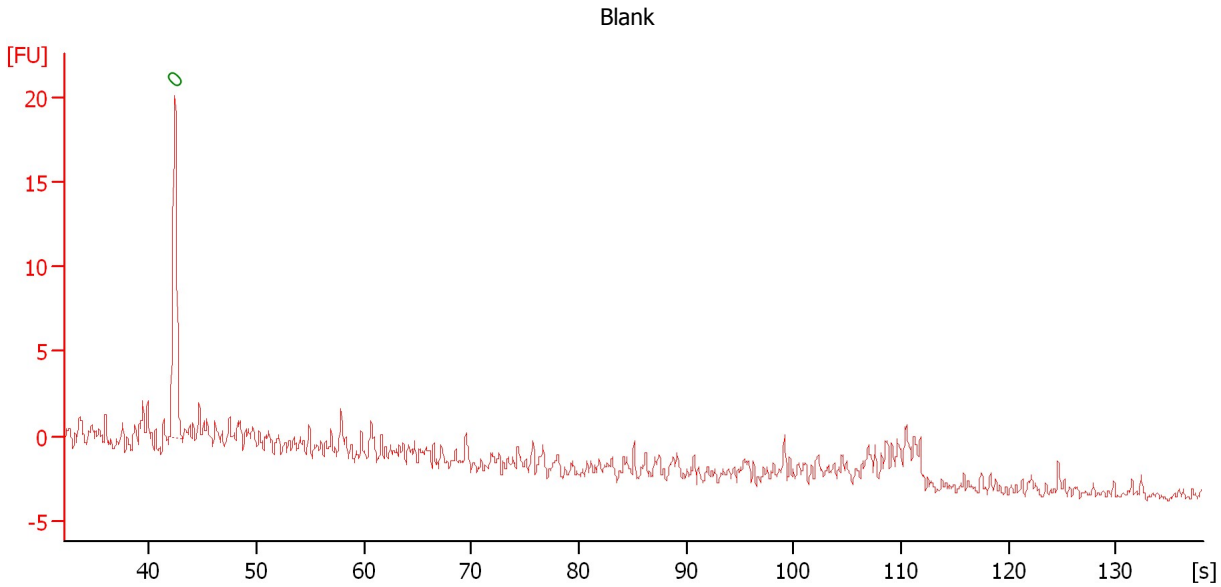
Region table for sample 6 : 4hr 3 PolII lib

From [bp]	To [bp]	Average Size [bp]	Molarity [pmol/l]	Conc. [pg/μl]	Corr. Area	% of Total	Size distribution in CV [%]	Color
200	1,000	0	0.0	0.00	0.0	0	0.0	Blue

Assay Class: High Sensitivity DNA Assay
Data Path: C:\...ents and Settings\Bioanalyzer\2012-07-12\2012-07-12_007.xad

Created: 7/12/2012 3:04:07 PM
Modified: 7/12/2012 3:44:49 PM

Electropherogram Summary Continued ...



Overall Results for sample 7 : Blank

Number of peaks found: 0 Noise: 0.4

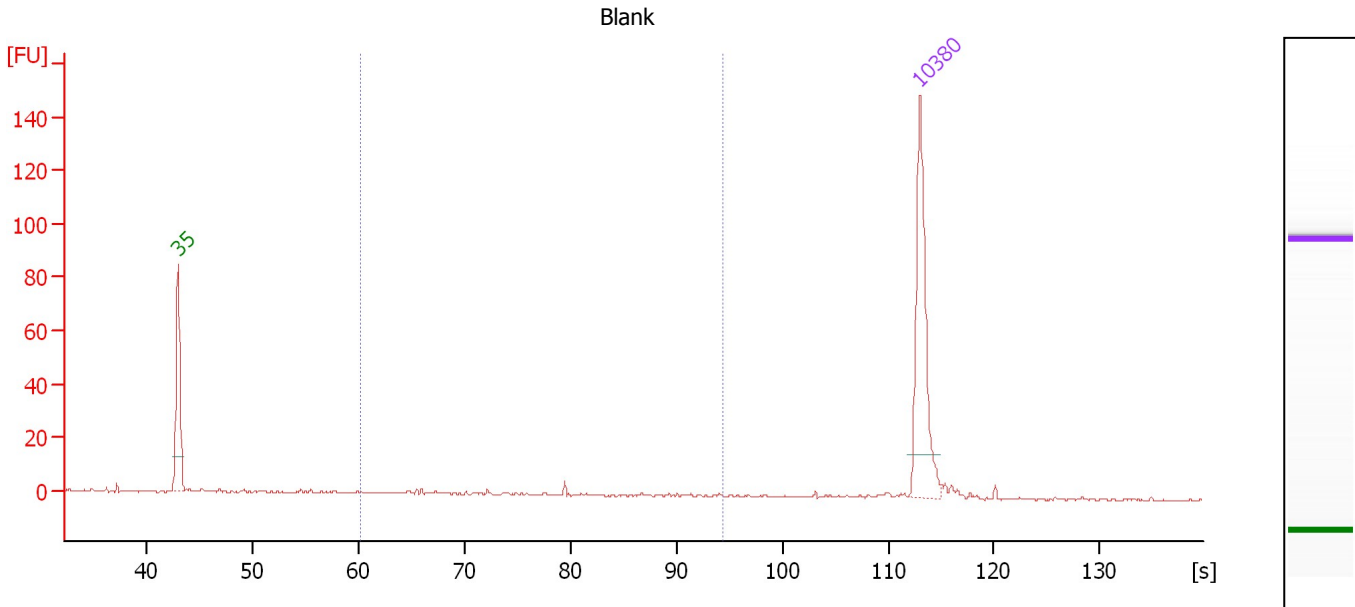
Peak table for sample 7 : Blank

Peak	Size [bp]	Conc. [pg/μl]	Molarity [pmol/l]	Observations
1	0	0.00	0.0	Lower Marker

Assay Class: High Sensitivity DNA Assay
 Data Path: C:\...ents and Settings\Bioanalyzer\2012-07-12\2012-07-12_007.xad

Created: 7/12/2012 3:04:07 PM
 Modified: 7/12/2012 3:44:49 PM

Electropherogram Summary Continued ...



Overall Results for sample 8 : Blank

Number of peaks found: 0 Corr. Area 1: 11.3
 Noise: 0.3

Peak table for sample 8 : Blank

Peak	Size [bp]	Conc. [pg/μl]	Molarity [pmol/l]	Observations
1	35	125.00	5,411.3	Lower Marker
2	10,380	75.00	10.9	Upper Marker

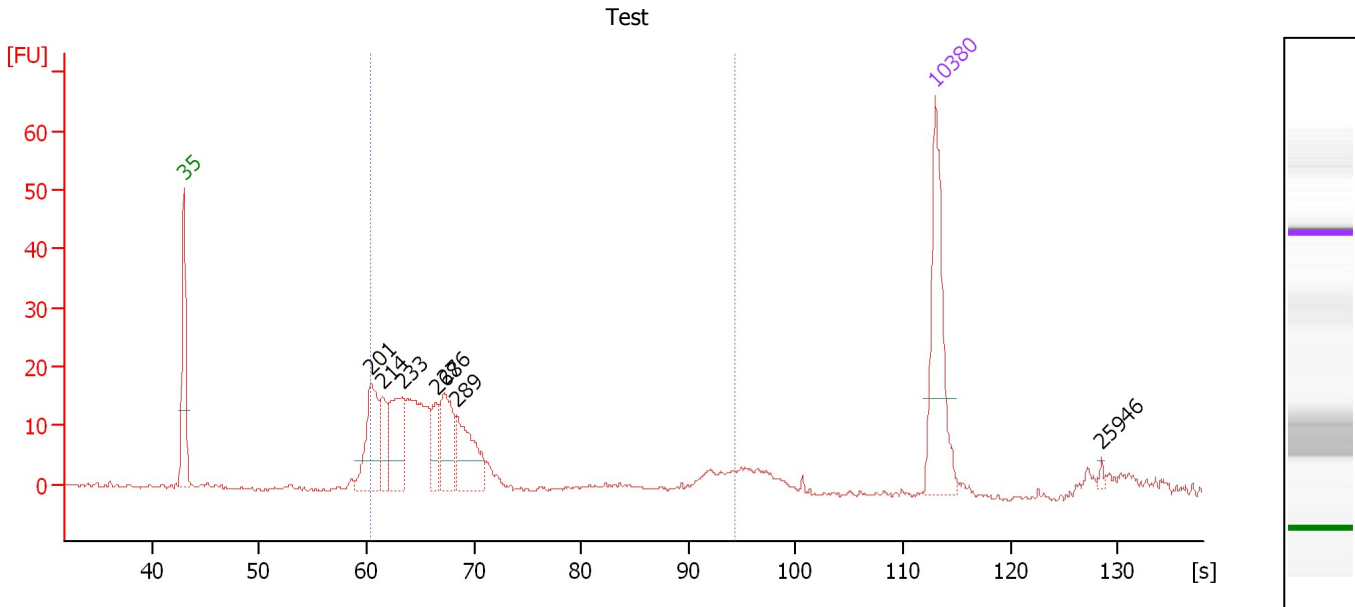
Region table for sample 8 : Blank

From [bp]	To [bp]	Average Size [bp]	Molarity [pmol/l]	Conc. [pg/μl]	Corr. Area	% of Total	Size distribution in CV [%]	Color
200	1,000	440	39.4	9.16	11.3	28	43.7	Blue

Assay Class: High Sensitivity DNA Assay
 Data Path: C:\...ents and Settings\Bioanalyzer\2012-07-12\2012-07-12_007.xad

Created: 7/12/2012 3:04:07 PM
 Modified: 7/12/2012 3:44:49 PM

Electropherogram Summary Continued ...



Overall Results for sample 9 : Test

Number of peaks found: 7 Corr. Area 1: 239.1
 Noise: 0.2

Peak table for sample 9 : Test

Peak	Size [bp]	Conc. [pg/μl]	Molarity [pmol/l]	Observations
1	35	125.00	5,411.3	Lower Marker
2	201	74.33	559.2	
3	214	36.32	257.7	
4	233	65.08	422.5	
5	268	28.13	158.9	
6	276	54.75	300.1	
7	289	60.69	318.1	
8	10,380	75.00	10.9	Upper Marker
9	25,946	0.00	0.0	

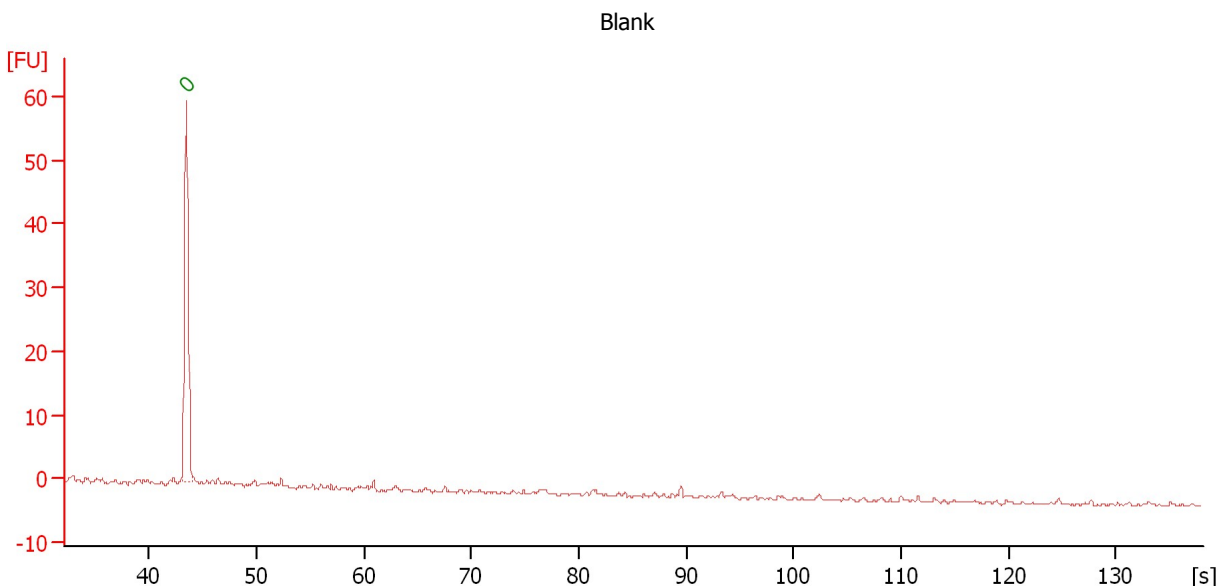
Region table for sample 9 : Test

From [bp]	To [bp]	Average Size [bp]	Molarity [pmol/l]	Conc. [pg/μl]	Corr. Area	% of Total	Size distribution in CV [%]	Color
200	1,000	299	2,384.9	410.36	239.1	84	52.0	Blue

Assay Class: High Sensitivity DNA Assay
 Data Path: C:\...ents and Settings\Bioanalyzer\2012-07-12\2012-07-12_007.xad

Created: 7/12/2012 3:04:07 PM
 Modified: 7/12/2012 3:44:49 PM

Electropherogram Summary Continued ...



Overall Results for sample 10 : Blank

Number of peaks found: 0 Noise: 0.3

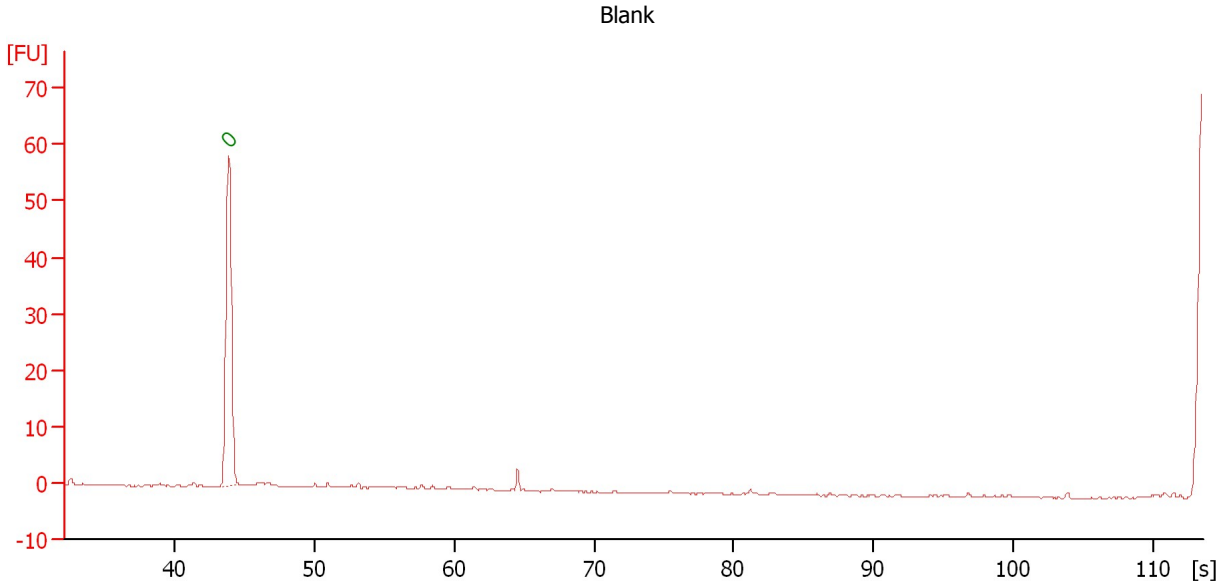
Peak table for sample 10 : Blank

Peak	Size [bp]	Conc. [pg/μl]	Molarity [pmol/l]	Observations
1	0	0.00	0.0	Lower Marker

Assay Class: High Sensitivity DNA Assay
Data Path: C:\...ents and Settings\Bioanalyzer\2012-07-12\2012-07-12_007.xad

Created: 7/12/2012 3:04:07 PM
Modified: 7/12/2012 3:44:49 PM

Electropherogram Summary Continued ...



Setpoint Deviations for sample 11 : Blank

End Analysis Time Range [s] : 113.55

Overall Results for sample 11 : Blank

Number of peaks found: 0 Noise: 0.1

Peak table for sample 11 : Blank

Peak	Size [bp]	Conc. [pg/μl]	Molarity [pmol/l]	Observations
1	0	0.00	0.0	Lower Marker

Assay Class: High Sensitivity DNA Assay
Data Path: C:\...ents and Settings\Bioanalyzer\2012-07-12\2012-07-12_007.xad

Created: 7/12/2012 3:04:07 PM
Modified: 7/12/2012 3:44:49 PM

Gel Image

Assay Class: High Sensitivity DNA Assay
 Data Path: C:\...ents and Settings\Bioanalyzer\2012-07-12\2012-07-12_007.xad

Created: 7/12/2012 3:04:07 PM
 Modified: 7/12/2012 3:44:49 PM

Run Logbook

Description	Number	Source	Category	Sub Category	Time	Time Zone	User	Host
Run aborted on port 1		Instrument	Run		7/12/2012 3:44:46 PM	(GMT --07:00) Pacific Standard Time	UC Davis	D8XSMGH1
Run started on port 1 (File: C:\Documents and Settings\Bioanalyzer\2012-07-12\2012-07-12_007.xad)		Instrument	Run		7/12/2012 3:04:13 PM	(GMT --07:00) Pacific Standard Time	UC Davis	D8XSMGH1
Product Number : G2938B		Instrument	Run		7/12/2012 3:04:13 PM	(GMT --07:00) Pacific Standard Time	UC Davis	D8XSMGH1
Name :		Instrument	Run		7/12/2012 3:04:13 PM	(GMT --07:00) Pacific Standard Time	UC Davis	D8XSMGH1
Vendor : Agilent Technologies		Instrument	Run		7/12/2012 3:04:13 PM	(GMT --07:00) Pacific Standard Time	UC Davis	D8XSMGH1
Serial# : DE13701086		Instrument	Run		7/12/2012 3:04:13 PM	(GMT --07:00) Pacific Standard Time	UC Davis	D8XSMGH1
Firmware : C.01.069		Instrument	Run		7/12/2012 3:04:13 PM	(GMT --07:00) Pacific Standard Time	UC Davis	D8XSMGH1
Cartridge : Electrode		Instrument	Run		7/12/2012 3:04:13 PM	(GMT --07:00) Pacific Standard Time	UC Davis	D8XSMGH1