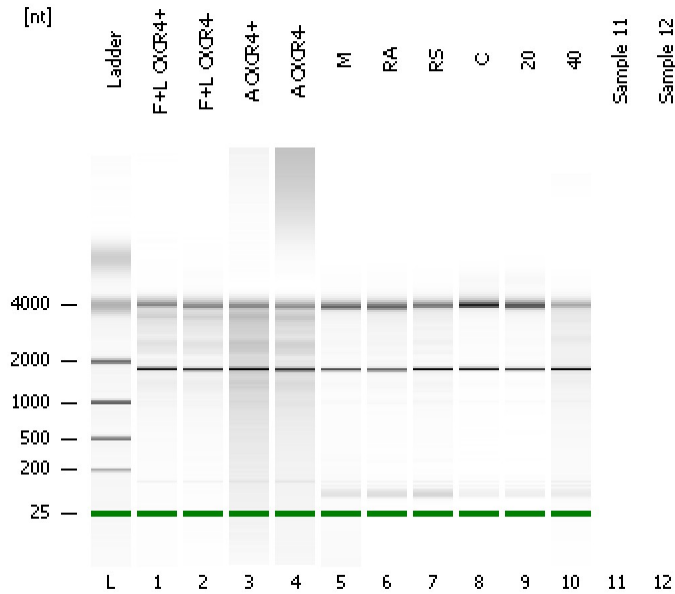


Assay Class: mRNA Nano
 Data Path: C:\...ents and Settings\Bioanalyzer\2012-07-13\2012-07-13_001.xad

Created: 7/13/2012 10:32:09 AM
 Modified: 7/13/2012 10:55:58 AM

Electrophoresis File Run Summary



Instrument Information:

Instrument Name: DE13701086 Firmware: C.01.069
 Serial#: DE13701086 Type: G2938B

Assay Information:

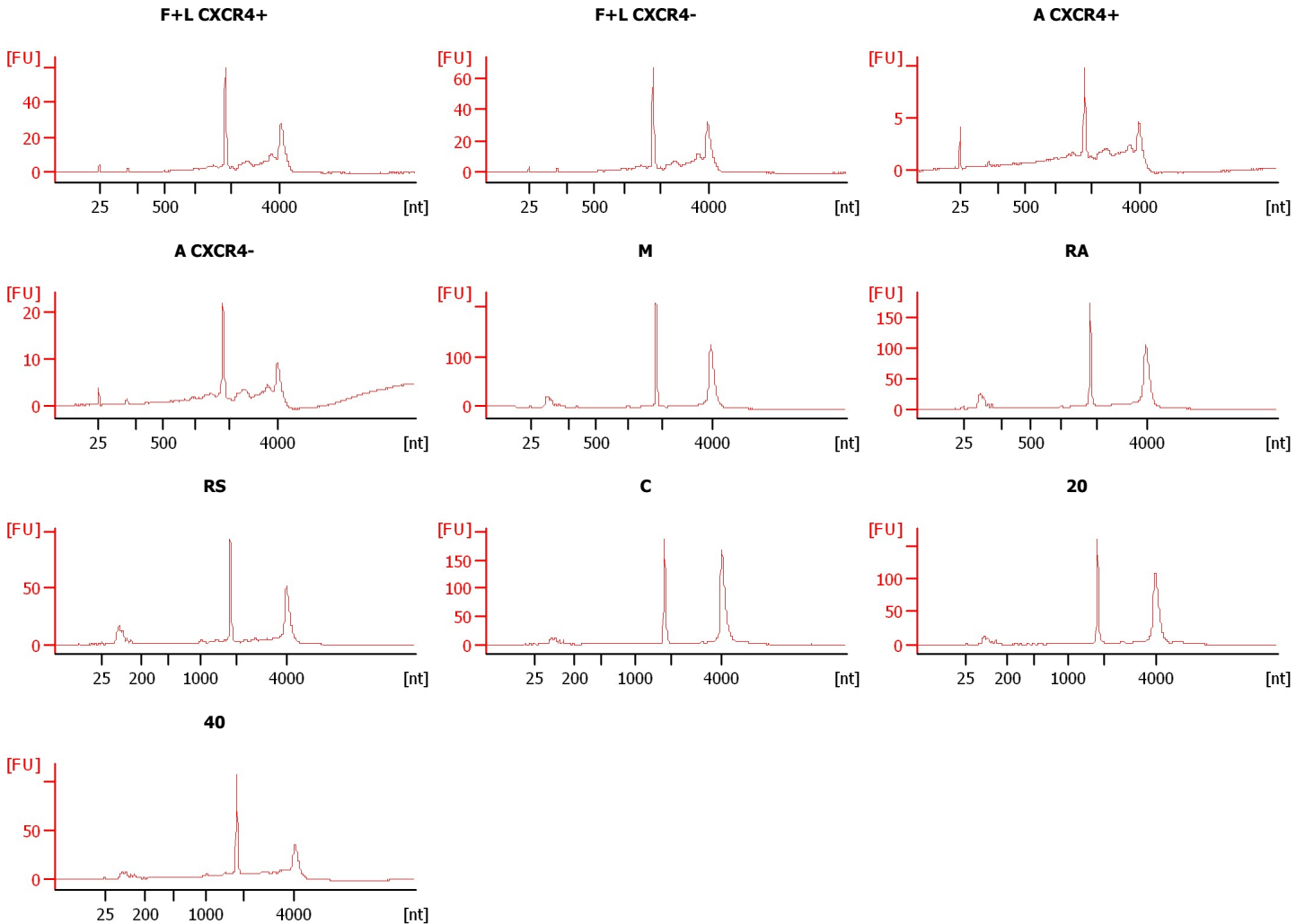
Assay Origin Path: C:\Program Files\Agilent\2100 bioanalyzer\2100 expert\assays\RNA\mRNA Nano Series II.xsy

Assay Class: mRNA Nano
 Version: 2.5
 Assay Comments: mRNA Analysis ng sensitivity

© Copyright 2003 - 2009 Agilent Technologies, Inc.

Chip Information:

Chip Lot #: Reagent Kit Lot #:
 Chip Comments:



Assay Class: mRNA Nano
Data Path: C:\...ents and Settings\Bioanalyzer\2012-07-13\2012-07-13_001.xad

Created: 7/13/2012 10:32:09 AM
Modified: 7/13/2012 10:55:58 AM

Electrophoresis File Run Summary (Chip Summary)

Sample Name	Sample Comment	Status	Result Label	Result Color
F+L CXCR4+		✓		
F+L CXCR4-		✓		
A CXCR4+		✓		
A CXCR4-		✓		
M		✓		
RA		✓		
RS		✓		
C		✓		
20		✓		
40		✓		
Sample 11				
Sample 12				
Ladder		✓		

Chip Lot #**Reagent Kit Lot #****Chip Comments :**

Assay Class: mRNA Nano
Data Path: C:\...ents and Settings\Bioanalyzer\2012-07-13\2012-07-13_001.xad

Created: 7/13/2012 10:32:09 AM
Modified: 7/13/2012 10:55:58 AM

Electrophoresis Assay Details

General Analysis Settings

Number of Available Sample and Ladder Wells (Max.) : 13
Minimum Visible Range [s] : 14
Maximum Visible Range [s] : 85
Start Analysis Time Range [s] : 15
End Analysis Time Range [s] : 84
Ladder Concentration [ng/ μ l] : 150
Lower Marker Concentration [ng/ μ l] : 0
Upper Marker Concentration [ng/ μ l] : 0
Used Lower Marker for Quantitation
Standard Curve Fit is Logarithmic
Show Data Aligned to Lower Marker

Integrator Settings

Integration Start Time [s] : 15
Integration End Time [s] : 84
Slope Threshold : 0.2
Height Threshold [FU] : 0.5
Area Threshold : 0.1
Width Threshold [s] : 0.2
Baseline Plateau [s] : 0.5

Filter Settings

Filter Width [s] : 0.5
Polynomial Order : 4

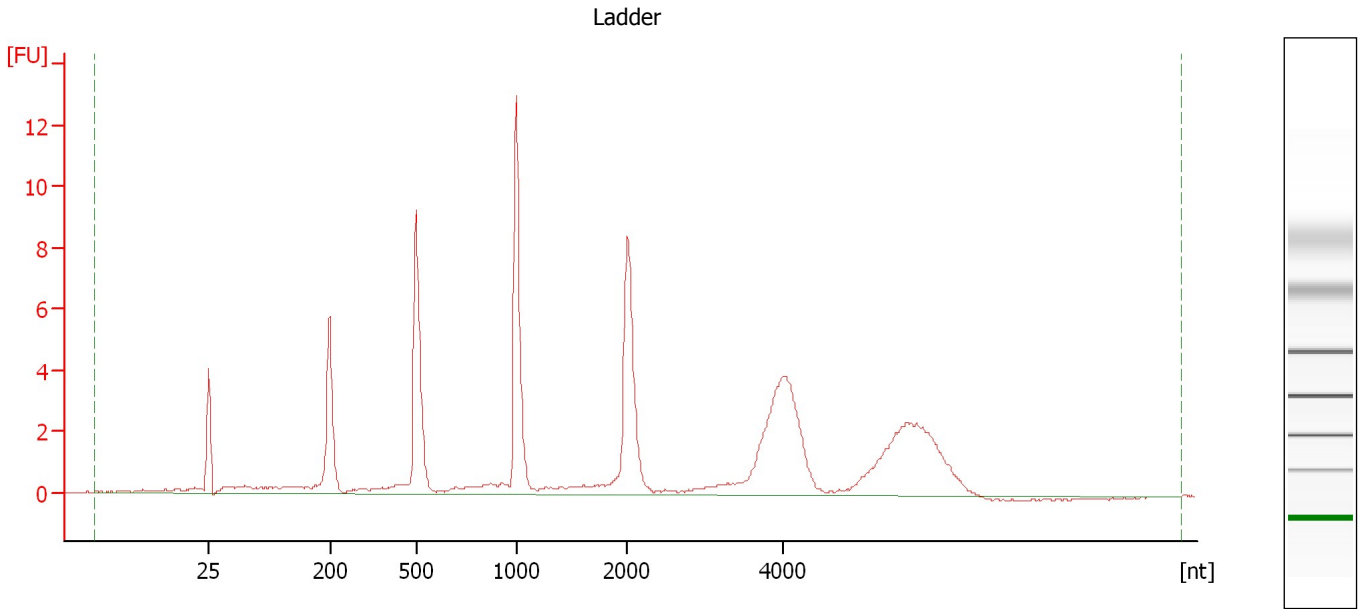
Ladder

Ladder Peak	Size
1	25
2	200
3	500
4	1000
5	2000
6	4000

Assay Class: mRNA Nano
Data Path: C:\...ents and Settings\Bioanalyzer\2012-07-13\2012-07-13_001.xad

Created: 7/13/2012 10:32:09 AM
Modified: 7/13/2012 10:55:58 AM

Electropherogram Summary



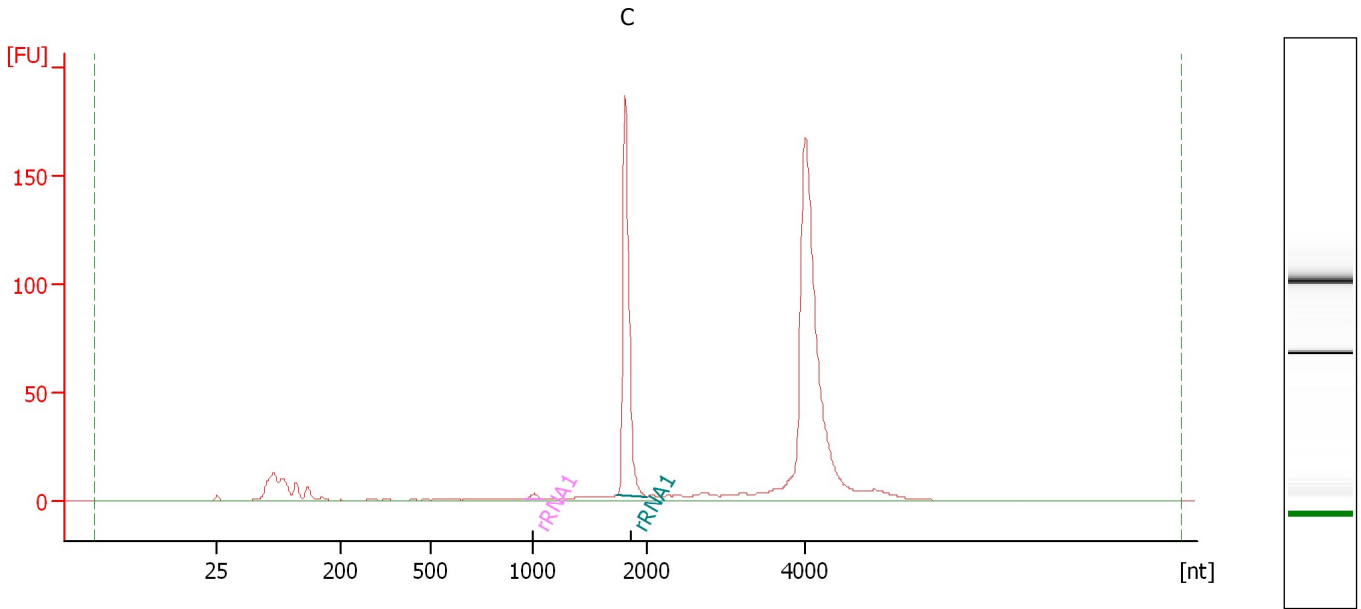
Overall Results for Ladder

RNA Area: 94.6 RNA Concentration: 150 ng/μl

Assay Class: mRNA Nano
Data Path: C:\...ents and Settings\Bioanalyzer\2012-07-13\2012-07-13_001.xad

Created: 7/13/2012 10:32:09 AM
Modified: 7/13/2012 10:55:58 AM

Electropherogram Summary Continued ...



Overall Results for sample 8 : C

RNA Area: 695.7 rRNA Contamination: 24.4 %
RNA Concentration: 1,103 ng/μl

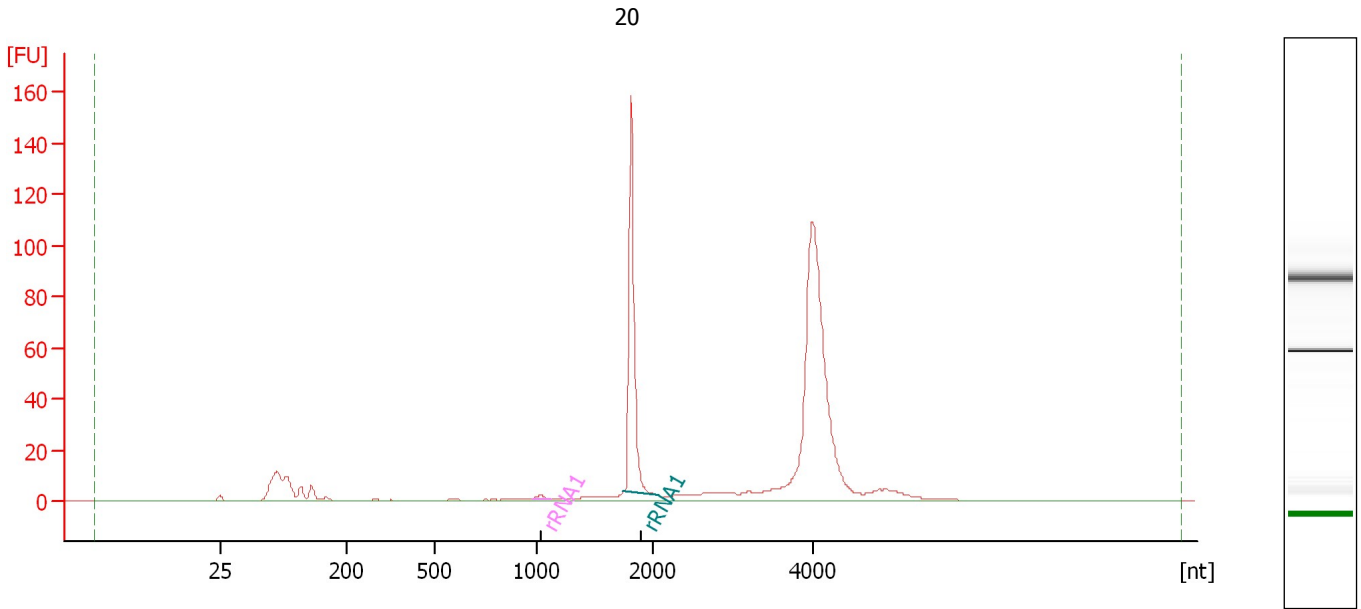
Fragment table for sample 8 : C

Name	Start Size [nt]	End Size [nt]	Area	% of total Area
rRNA1	968	1,103	2.5	0.4
rRNA1	1,745	2,005	167.2	24.0

Assay Class: mRNA Nano
Data Path: C:\...ents and Settings\Bioanalyzer\2012-07-13\2012-07-13_001.xad

Created: 7/13/2012 10:32:09 AM
Modified: 7/13/2012 10:55:58 AM

Electropherogram Summary Continued ...



Overall Results for sample 9 : 20

RNA Area: 565.8 rRNA Contamination: 22.0 %
RNA Concentration: 897 ng/μl

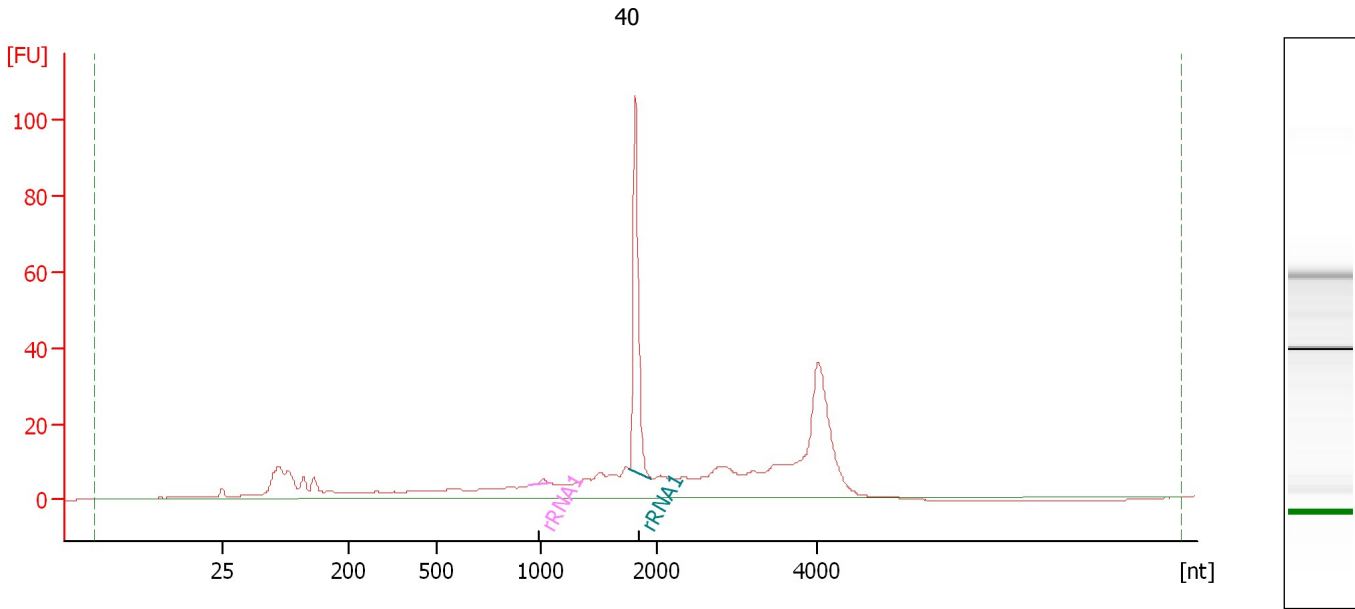
Fragment table for sample 9 : 20

Name	Start Size [nt]	End Size [nt]	Area	% of total Area
rRNA1	974	1,107	1.6	0.3
rRNA1	1,743	2,079	123.1	21.8

Assay Class: mRNA Nano
Data Path: C:\...ents and Settings\Bioanalyzer\2012-07-13\2012-07-13_001.xad

Created: 7/13/2012 10:32:09 AM
Modified: 7/13/2012 10:55:58 AM

Electropherogram Summary Continued ...



Overall Results for sample 10 : 40

RNA Area: 521.4 rRNA Contamination: 14.6 %
RNA Concentration: 827 ng/μl

Fragment table for sample 10 : 40

Name	Start Size [nt]	End Size [nt]	Area	% of total Area
rRNA1	945	1,095	1.2	0.2
rRNA1	1,763	1,956	74.9	14.4

Assay Class: mRNA Nano
Data Path: C:\...ents and Settings\Bioanalyzer\2012-07-13\2012-07-13_001.xad

Created: 7/13/2012 10:32:09 AM
Modified: 7/13/2012 10:55:58 AM

Gel Image

Assay Class: mRNA Nano
Data Path: C:\...ents and Settings\Bioanalyzer\2012-07-13\2012-07-13_001.xad

Created: 7/13/2012 10:32:09 AM
Modified: 7/13/2012 10:55:58 AM

Invalid Samples

Sample 11 has not been run, no results available.

Assay Class: mRNA Nano
 Data Path: C:\...ents and Settings\Bioanalyzer\2012-07-13\2012-07-13_001.xad

Created: 7/13/2012 10:32:09 AM
 Modified: 7/13/2012 10:55:58 AM

Run Logbook

Description	Number	Source	Category	Sub Category	Time	Time Zone	User	Host
Run ended on port 1 (Number of wells acquired: 11)		Instrument	Run		7/13/2012 10:55:56 AM	(GMT --07:00) Pacific Standard Time	UC Davis	D8XSMGH1
Run started on port 1 (File: C:\Documents and Settings\Bioanalyzer\2012-07-13\2012-07-13_001.xad)		Instrument	Run		7/13/2012 10:32:15 AM	(GMT --07:00) Pacific Standard Time	UC Davis	D8XSMGH1
Product Number : G2938B		Instrument	Run		7/13/2012 10:32:15 AM	(GMT --07:00) Pacific Standard Time	UC Davis	D8XSMGH1
Name :		Instrument	Run		7/13/2012 10:32:15 AM	(GMT --07:00) Pacific Standard Time	UC Davis	D8XSMGH1
Vendor : Agilent Technologies		Instrument	Run		7/13/2012 10:32:15 AM	(GMT --07:00) Pacific Standard Time	UC Davis	D8XSMGH1
Serial# : DE13701086		Instrument	Run		7/13/2012 10:32:14 AM	(GMT --07:00) Pacific Standard Time	UC Davis	D8XSMGH1
Firmware : C.01.069		Instrument	Run		7/13/2012 10:32:14 AM	(GMT --07:00) Pacific Standard Time	UC Davis	D8XSMGH1
Cartridge : Electrode		Instrument	Run		7/13/2012 10:32:14 AM	(GMT --07:00) Pacific Standard Time	UC Davis	D8XSMGH1