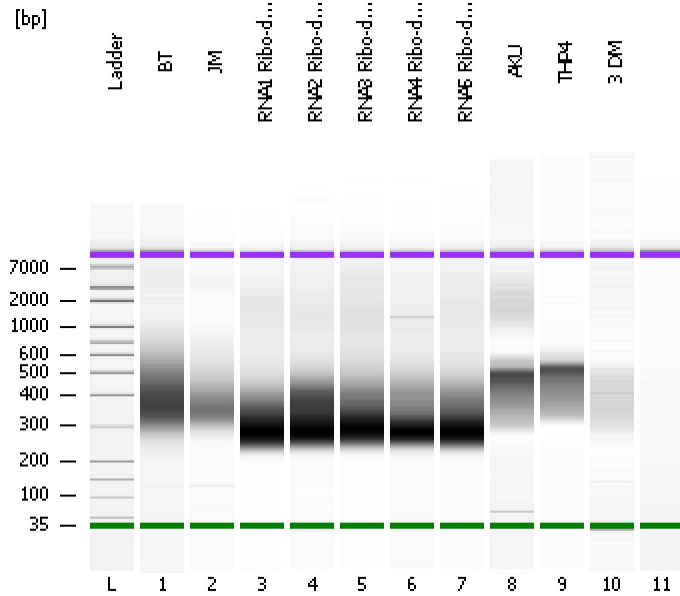


Assay Class: High Sensitivity DNA Assay  
Data Path: C:\...ents and Settings\Bioanalyzer\2012-07-18\2012-07-18\_001.xad

Created: 7/18/2012 10:31:57 AM  
Modified: 7/18/2012 11:13:17 AM

Electrophoresis File Run Summary



Instrument Information:

Instrument Name: DE13701086      Firmware: C.01.069  
Serial#: DE13701086      Type: G2938B

Assay Information:

Assay Origin Path: C:\Program Files\Agilent\2100 bioanalyzer\2100 expert\assays\dsDNA\High Sensitivity DNA.xsy  
Assay Class: High Sensitivity DNA Assay  
Version: 1.03  
Assay Comments: Copyright © 2003-2010 Agilent Technologies

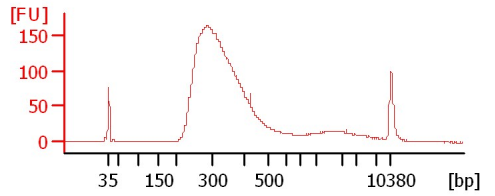
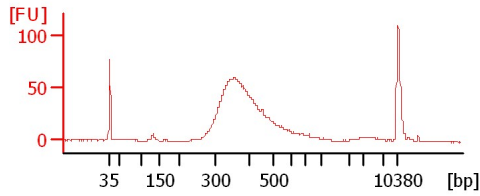
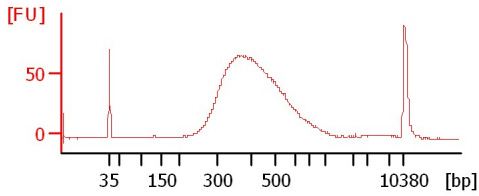
Chip Information:

Chip Lot #:   
Reagent Kit Lot #:   
Chip Comments:

BT

JM

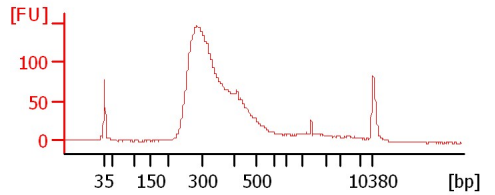
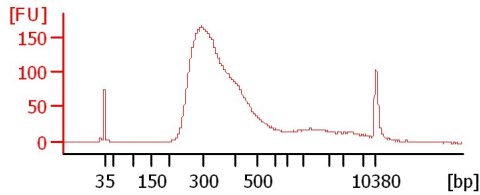
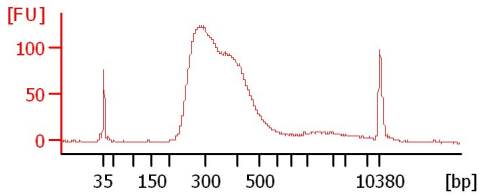
RNA1 Ribo-depl lib (1:4)



RNA2 Ribo-depl lib (1:2)

RNA3 Ribo-depl lib (1:4)

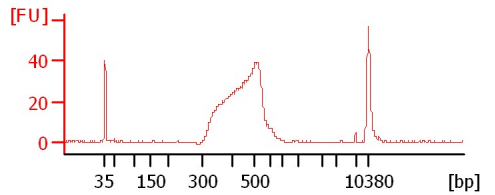
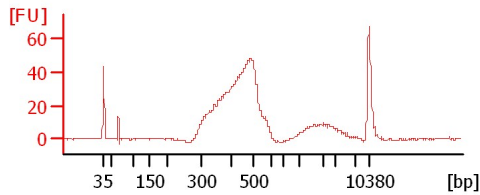
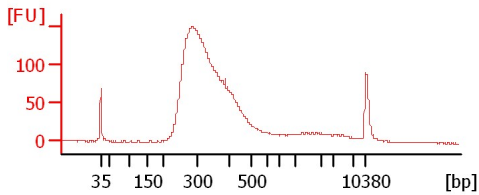
RNA4 Ribo-depl lib (1:3)



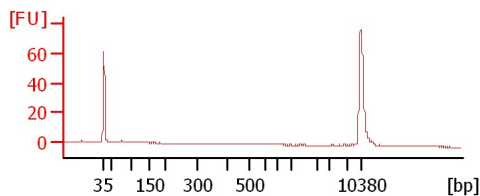
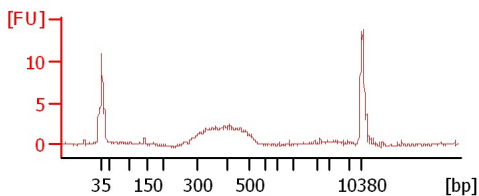
RNA5 Ribo-depl lib (1:4)

AKU

THP4



3 DM



Assay Class: High Sensitivity DNA Assay  
 Data Path: C:\...ents and Settings\Bioanalyzer\2012-07-18\2012-07-18\_001.xad

Created: 7/18/2012 10:31:57 AM  
 Modified: 7/18/2012 11:13:17 AM

**Electrophoresis File Run Summary (Chip Summary)**

Sample Name	Sample Comment	Rest. Digest	Status	Observation	Result Label	Result Color
BT		<input type="checkbox"/>	✓			
JM		<input type="checkbox"/>	✓			
RNA1 Ribo-depl lib (1:4)		<input type="checkbox"/>	✓			
RNA2 Ribo-depl lib (1:2)		<input type="checkbox"/>	✓			
RNA3 Ribo-depl lib (1:4)		<input type="checkbox"/>	✓			
RNA4 Ribo-depl lib (1:3)		<input type="checkbox"/>	✓			
RNA5 Ribo-depl lib (1:4)		<input type="checkbox"/>	✓			
AKU		<input type="checkbox"/>	✓			
THP4		<input type="checkbox"/>	✓			
3 DM		<input type="checkbox"/>	✓			
		<input type="checkbox"/>	✓			
Ladder		<input type="checkbox"/>	✓			

**Chip Lot #**

**Reagent Kit Lot #**

**Chip Comments :**

Assay Class: High Sensitivity DNA Assay  
Data Path: C:\...ents and Settings\Bioanalyzer\2012-07-18\2012-07-18\_001.xad

Created: 7/18/2012 10:31:57 AM  
Modified: 7/18/2012 11:13:17 AM

**Electrophoresis Assay Details**

**General Analysis Settings**

Number of Available Sample and Ladder Wells (Max.) : 12  
Minimum Visible Range [s] : 32  
Maximum Visible Range [s] : 138  
Start Analysis Time Range [s] : 33  
End Analysis Time Range [s] : 137.5  
Ladder Concentration [pg/μl] : 1950  
Uses Standard Area for Ladder Fragments  
Lower Marker Concentration [pg/μl] : 125  
Upper Marker Concentration [pg/μl] : 75  
Used Upper Marker for Quantitation  
Standard Curve Fit is Point to Point  
Show Data Aligned to Lower and Upper Marker

**Integrator Settings**

Integration Start Time [s] : 33.05  
Integration End Time [s] : 137  
Slope Threshold : 0.8  
Height Threshold [FU] : 5  
Area Threshold : 0.1  
Width Threshold [s] : 0.6  
Baseline Plateau [s] : 0.5

**Filter Settings**

Filter Width [s] : 0.5  
Polynomial Order : 4

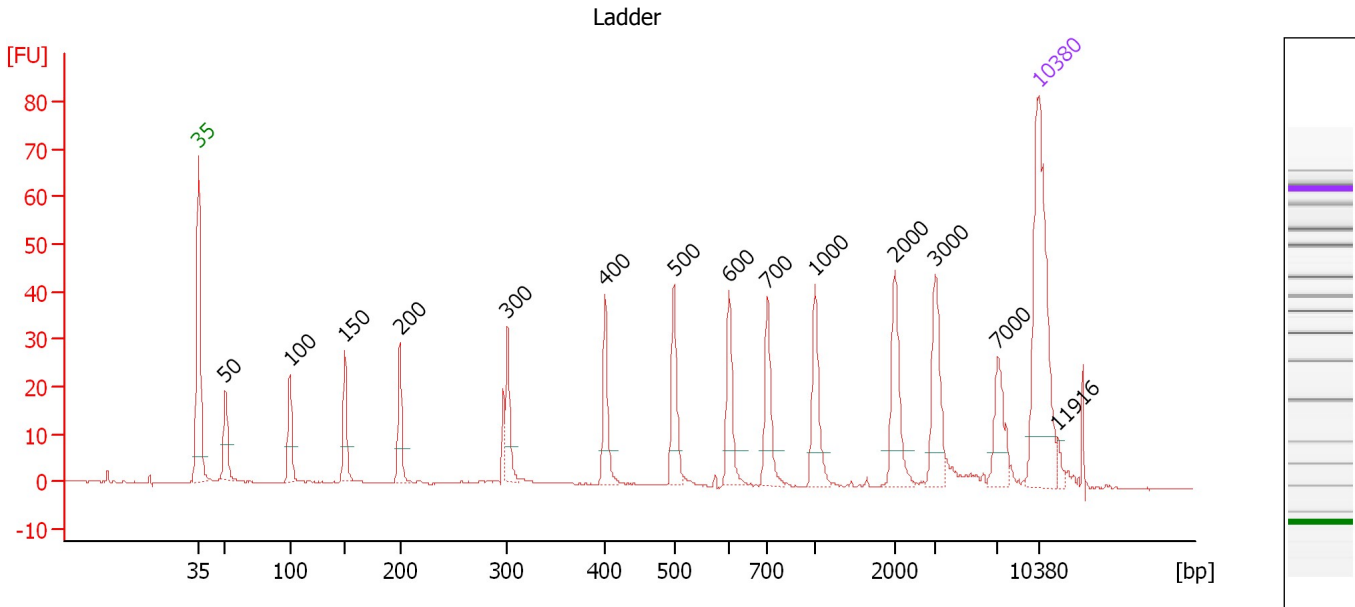
**Ladder**

Ladder Peak	Size	Area
1	35	160
2	50	210
3	100	208
4	150	221
5	200	242
6	300	270
7	400	305
8	500	306
9	600	336
10	700	321
11	1000	366
12	2000	413
13	3000	411
14	7000	400
15	10380	214

Assay Class: High Sensitivity DNA Assay  
 Data Path: C:\...ents and Settings\Bioanalyzer\2012-07-18\2012-07-18\_001.xad

Created: 7/18/2012 10:31:57 AM  
 Modified: 7/18/2012 11:13:17 AM

**Electropherogram Summary**



**Overall Results for Ladder**

Noise: 0.1

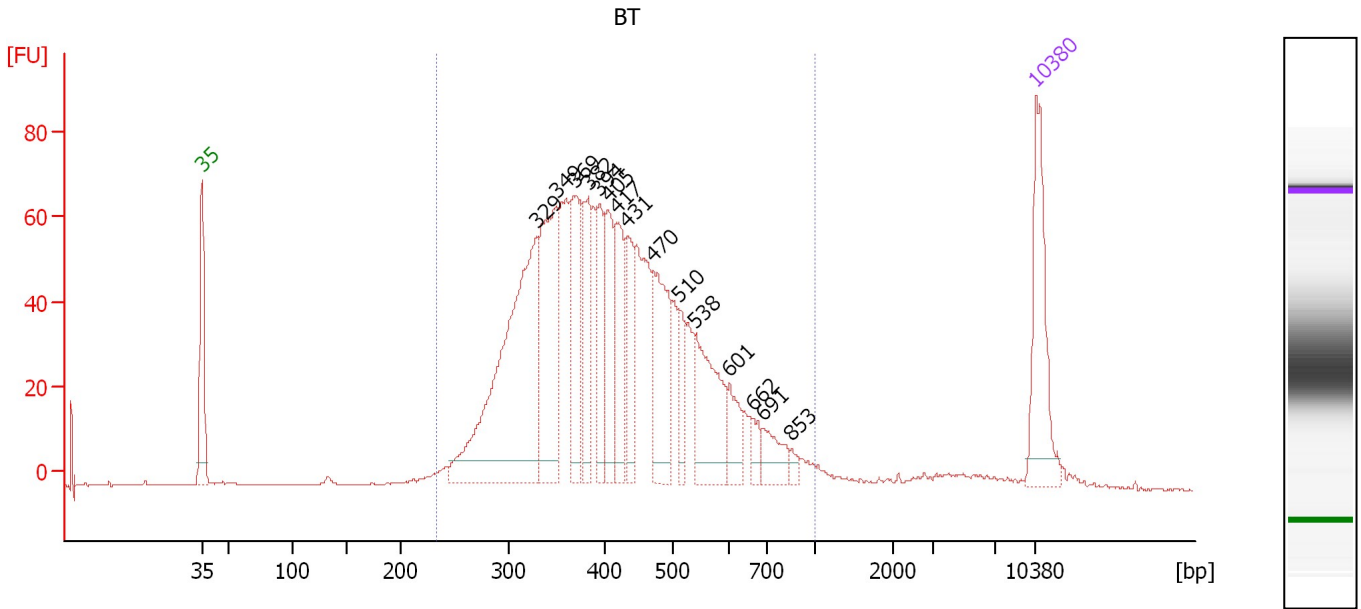
**Peak table for Ladder**

Peak	Size [bp]	Conc. [pg/μl]	Molarity [pmol/l]	Observations
1	35	125.00	5,411.3	Lower Marker
2	50	150.00	4,545.5	Ladder Peak
3	100	150.00	2,272.7	Ladder Peak
4	150	150.00	1,515.2	Ladder Peak
5	200	150.00	1,136.4	Ladder Peak
6	300	150.00	757.6	Ladder Peak
7	400	150.00	568.2	Ladder Peak
8	500	150.00	454.5	Ladder Peak
9	600	150.00	378.8	Ladder Peak
10	700	150.00	324.7	Ladder Peak
11	1,000	150.00	227.3	Ladder Peak
12	2,000	150.00	113.6	Ladder Peak
13	3,000	150.00	75.8	Ladder Peak
14	7,000	150.00	32.5	Ladder Peak
15	10,380	75.00	10.9	Upper Marker
16	11,916	0.00	0.0	

Assay Class: High Sensitivity DNA Assay  
 Data Path: C:\...ents and Settings\Bioanalyzer\2012-07-18\2012-07-18\_001.xad

Created: 7/18/2012 10:31:57 AM  
 Modified: 7/18/2012 11:13:17 AM

**Electropherogram Summary Continued ...**



**Overall Results for sample 1 : BT**

Number of peaks found: 15                      Corr. Area 1: 1,635.9  
 Noise: 0.1

**Peak table for sample 1 : BT**

Peak	Size [bp]	Conc. [pg/μl]	Molarity [pmol/l]	Observations
1	35	125.00	5,411.3	Lower Marker
2	329	338.78	1,561.9	
3	349	159.47	692.3	
4	369	86.33	354.1	
5	382	65.44	259.5	
6	394	58.11	223.4	
7	405	75.41	282.1	
8	417	75.01	272.8	
9	431	56.61	198.8	
10	470	101.34	326.9	
11	510	29.82	88.6	
12	538	97.08	273.4	
13	601	29.54	74.4	
14	662	13.27	30.4	
15	691	28.33	62.1	
16	853	6.49	11.5	
17	10,380	75.00	10.9	Upper Marker

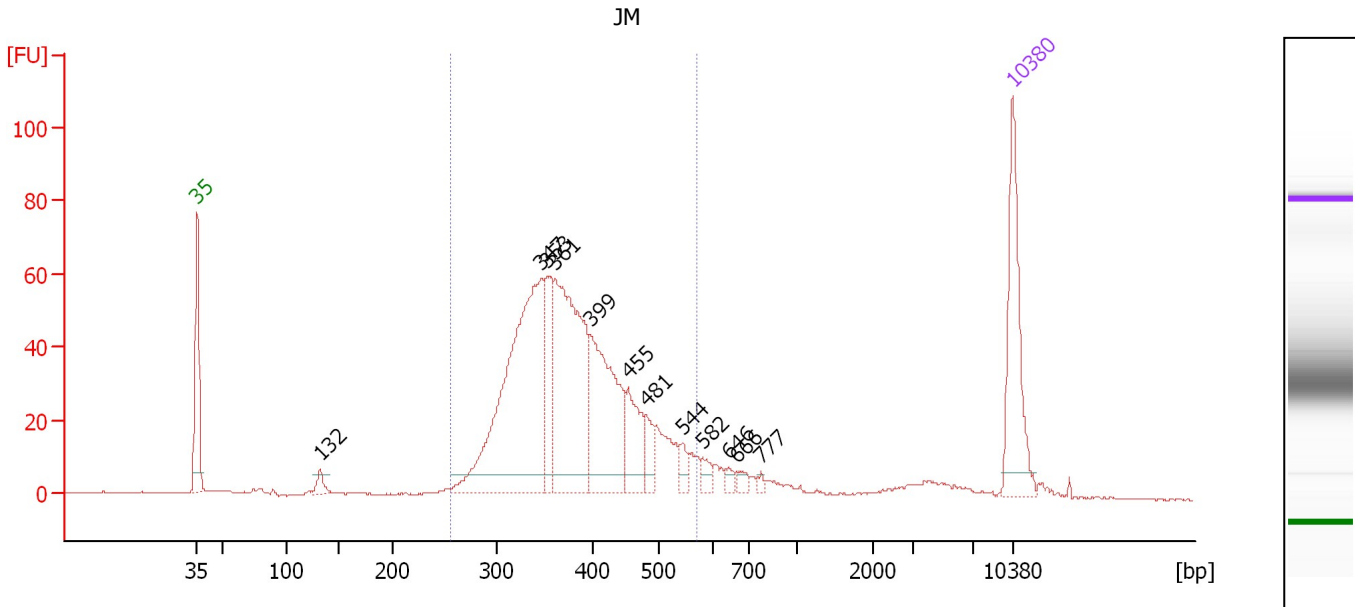
**Region table for sample 1 : BT**

From [bp]	To [bp]	Average Size [bp]	Molarity [pmol/l]	Conc. [pg/μl]	Corr. Area	% of Total	Size distribution in CV [%]	Color
232	1,000	428	6,856.9	1,760.76	1,635.9	83	28.8	Blue

Assay Class: High Sensitivity DNA Assay  
 Data Path: C:\...ents and Settings\Bioanalyzer\2012-07-18\2012-07-18\_001.xad

Created: 7/18/2012 10:31:57 AM  
 Modified: 7/18/2012 11:13:17 AM

**Electropherogram Summary Continued ...**



**Overall Results for sample 2 : JM**

Number of peaks found: 12                      Corr. Area 1: 904.9  
 Noise: 0.2

**Peak table for sample 2 : JM**

Peak	Size [bp]	Conc. [pg/μl]	Molarity [pmol/l]	Observations
1	35	125.00	5,411.3	Lower Marker
2	132	11.92	136.4	
3	347	322.71	1,409.1	
4	353	63.00	270.3	
5	361	231.94	973.3	
6	399	144.85	550.4	
7	455	49.35	164.4	
8	481	20.36	64.1	
9	544	11.07	30.8	
10	582	10.66	27.8	
11	646	5.59	13.1	
12	666	6.73	15.3	
13	777	2.92	5.7	
14	10,380	75.00	10.9	Upper Marker

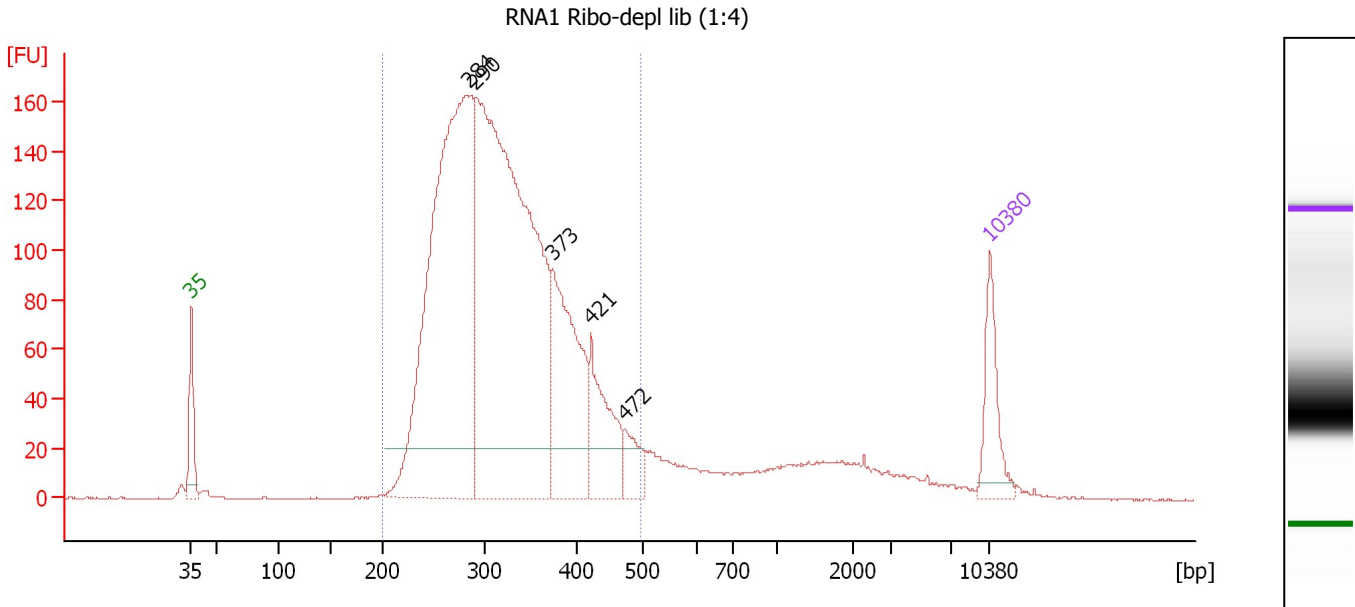
**Region table for sample 2 : JM**

From [bp]	To [bp]	Average Size [bp]	Molarity [pmol/l]	Conc. [pg/μl]	Corr. Area	% of Total	Size distribution in CV [%]	Color
256	571	385	3,777.1	925.63	904.9	87	17.0	Blue

Assay Class: High Sensitivity DNA Assay  
 Data Path: C:\...ents and Settings\Bioanalyzer\2012-07-18\2012-07-18\_001.xad

Created: 7/18/2012 10:31:57 AM  
 Modified: 7/18/2012 11:13:17 AM

**Electropherogram Summary Continued ...**



**Setpoint Deviations for sample 3 : RNA1 Ribo-depl lib (1:4)**

Height Threshold [FU] : 20

**Overall Results for sample 3 : RNA1 Ribo-depl lib (1:4)**

Number of peaks found: 5                      Corr. Area 1: 2,903.7  
 Noise: 0.2

**Peak table for sample 3 : RNA1 Ribo-depl lib (1:4)**

Peak	Size [bp]	Conc. [pg/μl]	Molarity [pmol/l]	Observations
1	35	125.00	5,411.3	Lower Marker
2	284	1,182.36	6,319.0	
3	290	1,457.85	7,609.7	
4	373	334.93	1,362.1	
5	421	157.14	566.1	
6	472	52.06	167.2	
7	10,380	75.00	10.9	Upper Marker

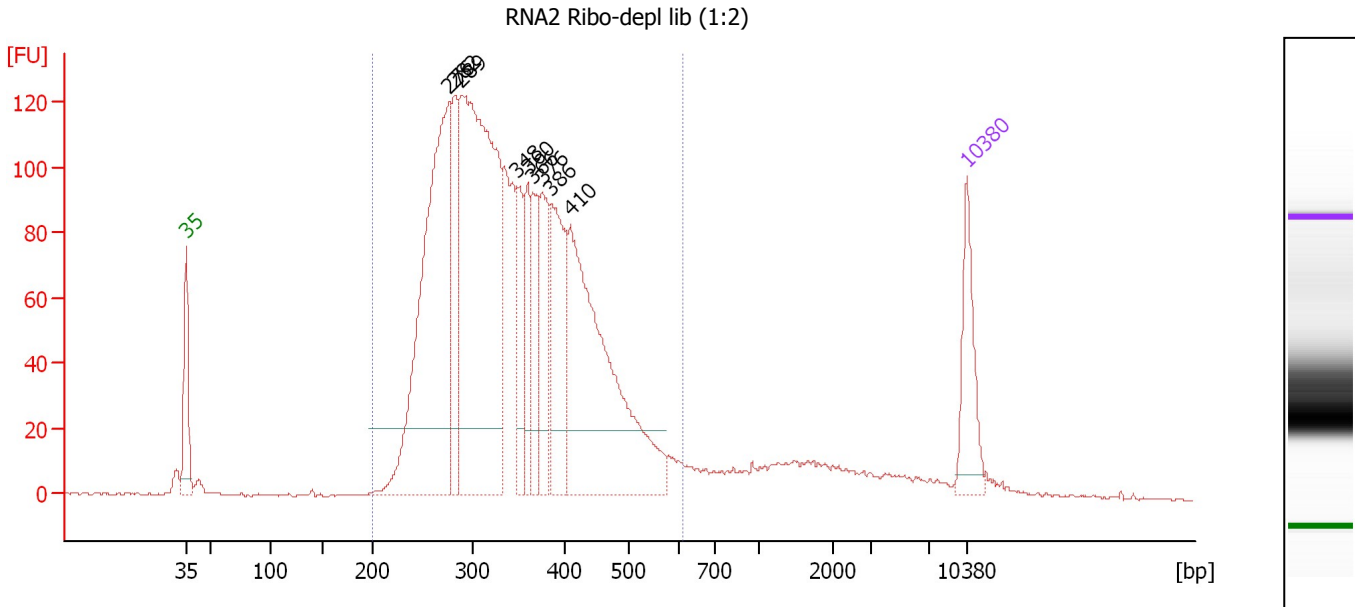
**Region table for sample 3 : RNA1 Ribo-depl lib (1:4)**

From [bp]	To [bp]	Average Size [bp]	Molarity [pmol/l]	Conc. [pg/μl]	Corr. Area	% of Total	Size distribution in CV [%]	Color
200	496	322	15,394.8	3,126.98	2,903.7	88	18.5	Blue

Assay Class: High Sensitivity DNA Assay  
 Data Path: C:\...ents and Settings\Bioanalyzer\2012-07-18\2012-07-18\_001.xad

Created: 7/18/2012 10:31:57 AM  
 Modified: 7/18/2012 11:13:17 AM

**Electropherogram Summary Continued ...**



**Setpoint Deviations for sample 4 : RNA2 Ribo-depl lib (1:2)**

Height Threshold [FU] : 20

**Overall Results for sample 4 : RNA2 Ribo-depl lib (1:2)**

Number of peaks found: 9                      Corr. Area 1: 2,542.3  
 Noise: 0.3

**Peak table for sample 4 : RNA2 Ribo-depl lib (1:2)**

Peak	Size [bp]	Conc. [pg/μl]	Molarity [pmol/l]	Observations
1	35	125.00	5,411.3	Lower Marker
2	276	648.59	3,556.9	
3	282	137.53	740.0	
4	289	796.87	4,184.7	
5	348	104.01	453.0	
6	360	87.06	366.2	
7	366	98.18	406.4	
8	376	120.28	484.7	
9	386	184.44	723.9	
10	410	476.58	1,760.4	
11	10,380	75.00	10.9	Upper Marker

**Region table for sample 4 : RNA2 Ribo-depl lib (1:2)**

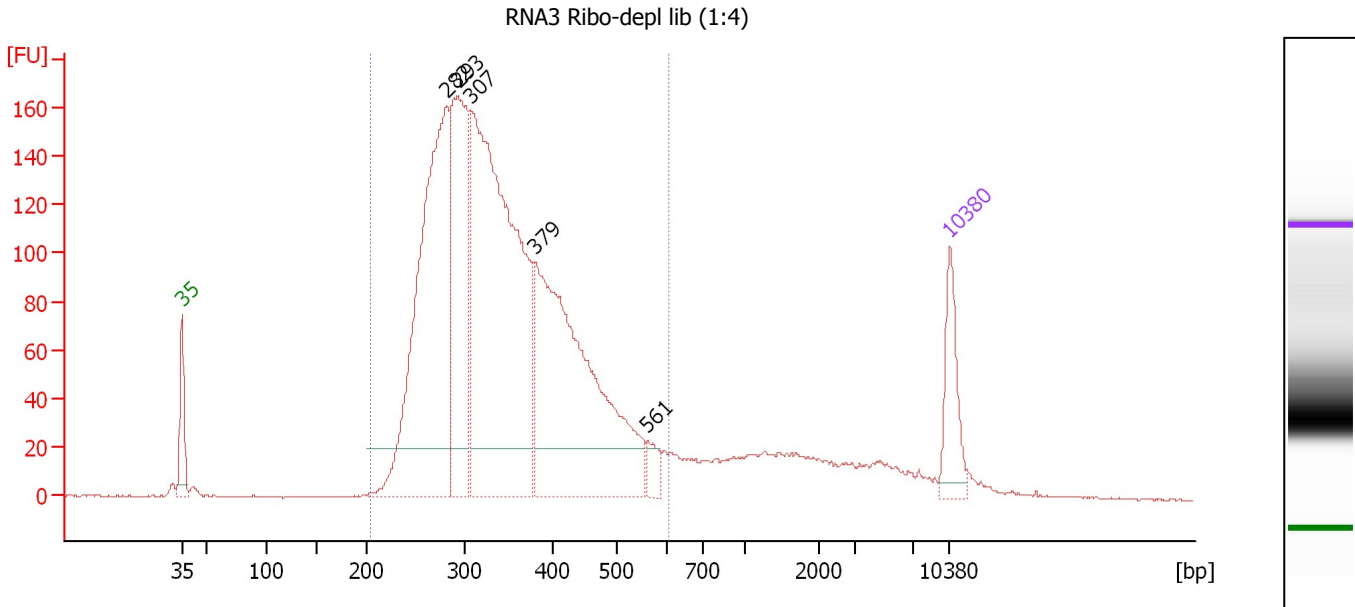
From [bp]	To [bp]	Average Size [bp]	Molarity [pmol/l]	Conc. [pg/μl]	Corr. Area	% of Total	Size distribution in CV [%]	Color
200	607	348	13,312.0	2,865.18	2,542.3	91	22.1	Blue



Assay Class: High Sensitivity DNA Assay  
 Data Path: C:\...ents and Settings\Bioanalyzer\2012-07-18\2012-07-18\_001.xad

Created: 7/18/2012 10:31:57 AM  
 Modified: 7/18/2012 11:13:17 AM

**Electropherogram Summary Continued ...**



**Setpoint Deviations for sample 5 : RNA3 Ribo-depl lib (1:4)**

Height Threshold [FU] : 20

**Overall Results for sample 5 : RNA3 Ribo-depl lib (1:4)**

Number of peaks found: 5                      Corr. Area 1: 3,074.4  
 Noise: 0.3

**Peak table for sample 5 : RNA3 Ribo-depl lib (1:4)**

Peak	Size [bp]	Conc. [pg/μl]	Molarity [pmol/l]	Observations
1	35	125.00	5,411.3	Lower Marker
2	282	819.79	4,405.7	
3	293	450.22	2,325.8	
4	307	1,074.33	5,303.1	
5	379	721.05	2,885.1	
6	561	30.59	82.6	
7	10,380	75.00	10.9	Upper Marker

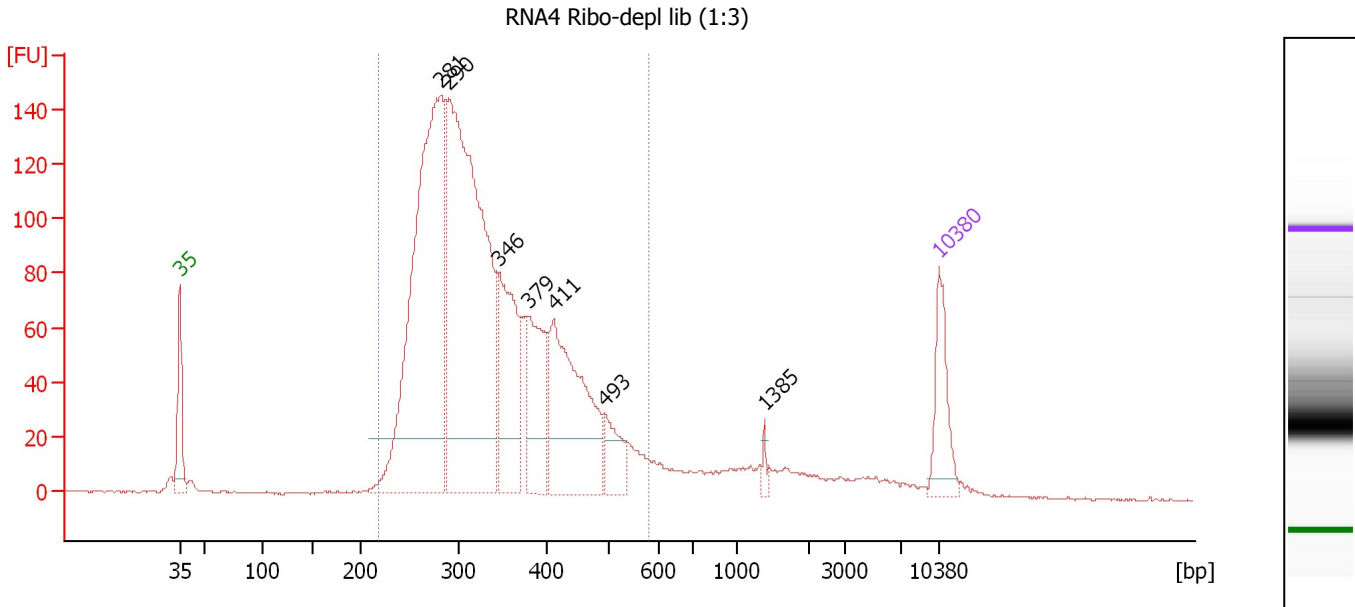
**Region table for sample 5 : RNA3 Ribo-depl lib (1:4)**

From [bp]	To [bp]	Average Size [bp]	Molarity [pmol/l]	Conc. [pg/μl]	Corr. Area	% of Total	Size distribution in CV [%]	Color
204	602	346	14,195.2	3,042.58	3,074.4	87	22.6	Blue

Assay Class: High Sensitivity DNA Assay  
 Data Path: C:\...ents and Settings\Bioanalyzer\2012-07-18\2012-07-18\_001.xad

Created: 7/18/2012 10:31:57 AM  
 Modified: 7/18/2012 11:13:17 AM

**Electropherogram Summary Continued ...**



**Setpoint Deviations for sample 6 : RNA4 Ribo-depl lib (1:3)**

Height Threshold [FU] : 20

**Overall Results for sample 6 : RNA4 Ribo-depl lib (1:3)**

Number of peaks found: 7                      Corr. Area 1: 2,397.6  
 Noise: 0.4

**Peak table for sample 6 : RNA4 Ribo-depl lib (1:3)**

Peak	Size [bp]	Conc. [pg/μl]	Molarity [pmol/l]	Observations
1	35	125.00	5,411.3	Lower Marker
2	281	939.44	5,063.4	
3	290	1,024.35	5,354.1	
4	346	237.01	1,038.9	
5	379	184.97	738.5	
6	411	329.53	1,214.2	
7	493	64.67	198.9	
8	1,385	9.55	10.4	
9	10,380	75.00	10.9	Upper Marker

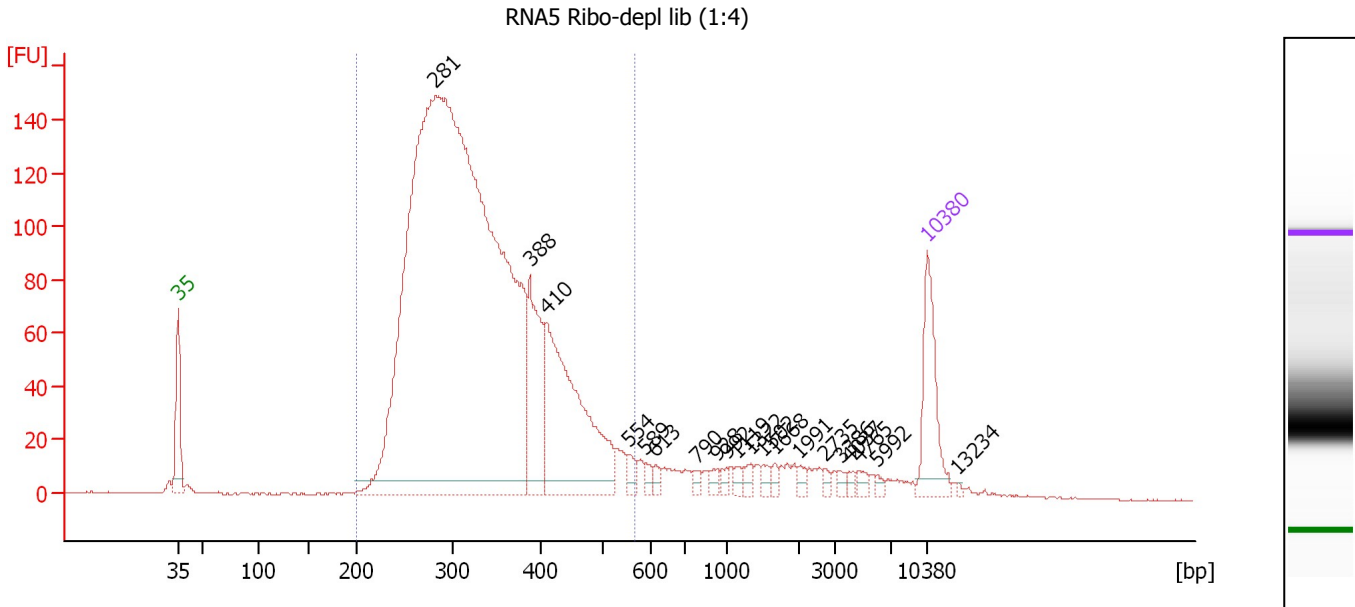
**Region table for sample 6 : RNA4 Ribo-depl lib (1:3)**

From [bp]	To [bp]	Average Size [bp]	Molarity [pmol/l]	Conc. [pg/μl]	Corr. Area	% of Total	Size distribution in CV [%]	Color
218	580	338	13,818.3	2,903.95	2,397.6	90	22.1	Blue

Assay Class: High Sensitivity DNA Assay  
 Data Path: C:\...ents and Settings\Bioanalyzer\2012-07-18\2012-07-18\_001.xad

Created: 7/18/2012 10:31:57 AM  
 Modified: 7/18/2012 11:13:17 AM

**Electropherogram Summary Continued ...**



**Overall Results for sample 7 : RNA5 Ribo-depl lib (1:4)**

Number of peaks found: 20      Corr. Area 1: 2,625.7  
 Noise: 0.3

**Peak table for sample 7 : RNA5 Ribo-depl lib (1:4)**

Peak	Size [bp]	Conc. [pg/μl]	Molarity [pmol/l]	Observations
1	35	125.00	5,411.3	Lower Marker
2	281	2,433.38	13,101.8	
3	388	143.13	559.1	
4	410	318.87	1,179.0	
5	554	13.95	38.2	
6	589	9.09	23.4	
7	613	7.81	19.3	
8	790	7.64	14.7	
9	928	9.15	14.9	
10	992	7.53	11.5	
11	1,119	7.74	10.5	
12	1,322	8.78	10.1	
13	1,502	8.05	8.1	
14	1,668	6.21	5.6	
15	1,991	6.98	5.3	
16	2,735	5.45	3.0	
17	3,386	5.44	2.4	
18	4,037	5.00	1.9	
19	4,765	7.70	2.4	
20	5,992	4.32	1.1	
21	10,380	75.00	10.9	Upper Marker
22	13,234	0.00	0.0	

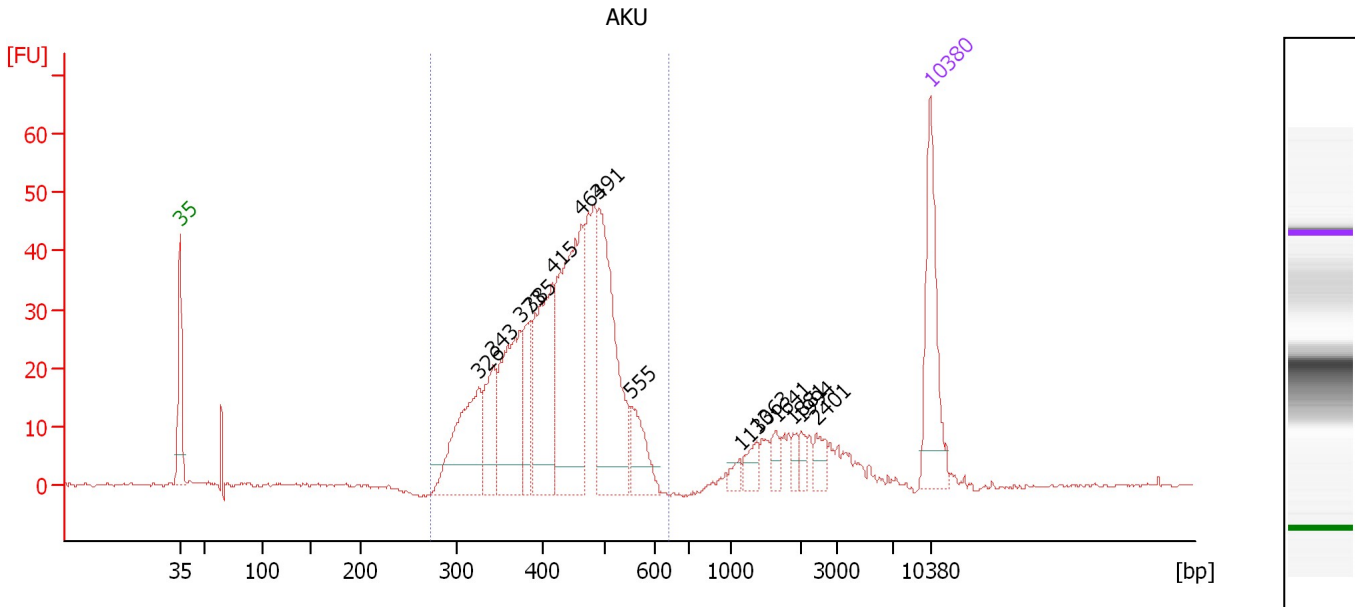
**Region table for sample 7 : RNA5 Ribo-depl lib (1:4)**

From [bp]	To [bp]	Average Size [bp]	Molarity [pmol/l]	Conc. [pg/μl]	Corr. Area	% of Total	Size distribution in CV [%]	Color
200	569	334	13,528.7	2,817.23	2,625.7	89	21.2	Blue

Assay Class: High Sensitivity DNA Assay  
 Data Path: C:\...ents and Settings\Bioanalyzer\2012-07-18\2012-07-18\_001.xad

Created: 7/18/2012 10:31:57 AM  
 Modified: 7/18/2012 11:13:17 AM

**Electropherogram Summary Continued ...**



**Overall Results for sample 8 : AKU**

Number of peaks found: 14                      Corr. Area 1: 630.7  
 Noise: 0.4

**Peak table for sample 8 : AKU**

Peak	Size [bp]	Conc. [pg/μl]	Molarity [pmol/l]	Observations
1	35	125.00	5,411.3	Lower Marker
2	326	121.66	565.2	
3	343	64.96	286.7	
4	373	127.13	516.1	
5	385	51.62	202.9	
6	415	137.68	502.7	
7	463	220.91	723.4	
8	491	177.44	547.1	
9	555	43.91	119.9	
10	1,130	7.74	10.4	
11	1,363	13.98	15.5	
12	1,641	11.46	10.6	
13	1,881	7.19	5.8	
14	1,994	7.62	5.8	
15	2,401	13.67	8.6	
16	10,380	75.00	10.9	Upper Marker

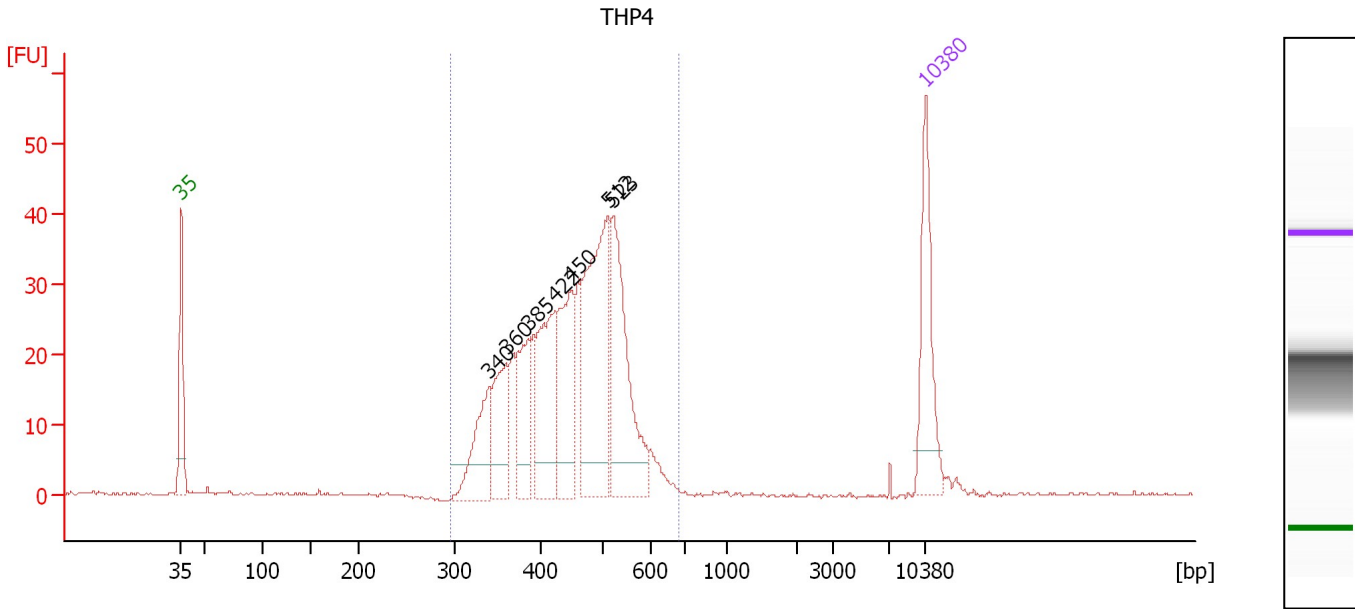
**Region table for sample 8 : AKU**

From [bp]	To [bp]	Average Size [bp]	Molarity [pmol/l]	Conc. [pg/μl]	Corr. Area	% of Total	Size distribution in CV [%]	Color
275	644	431	3,640.9	997.47	630.7	86	16.2	Blue

Assay Class: High Sensitivity DNA Assay  
 Data Path: C:\...ents and Settings\Bioanalyzer\2012-07-18\2012-07-18\_001.xad

Created: 7/18/2012 10:31:57 AM  
 Modified: 7/18/2012 11:13:17 AM

**Electropherogram Summary Continued ...**



**Overall Results for sample 9 : THP4**

Number of peaks found: 7                      Corr. Area 1: 501.7  
 Noise: 0.2

**Peak table for sample 9 : THP4**

Peak	Size [bp]	Conc. [pg/μl]	Molarity [pmol/l]	Observations
1	35	125.00	5,411.3	Lower Marker
2	340	79.46	354.1	
3	360	78.31	329.9	
4	385	75.25	296.2	
5	422	121.89	437.2	
6	450	106.80	360.0	
7	512	205.82	608.8	
8	523	154.44	447.4	
9	10,380	75.00	10.9	Upper Marker

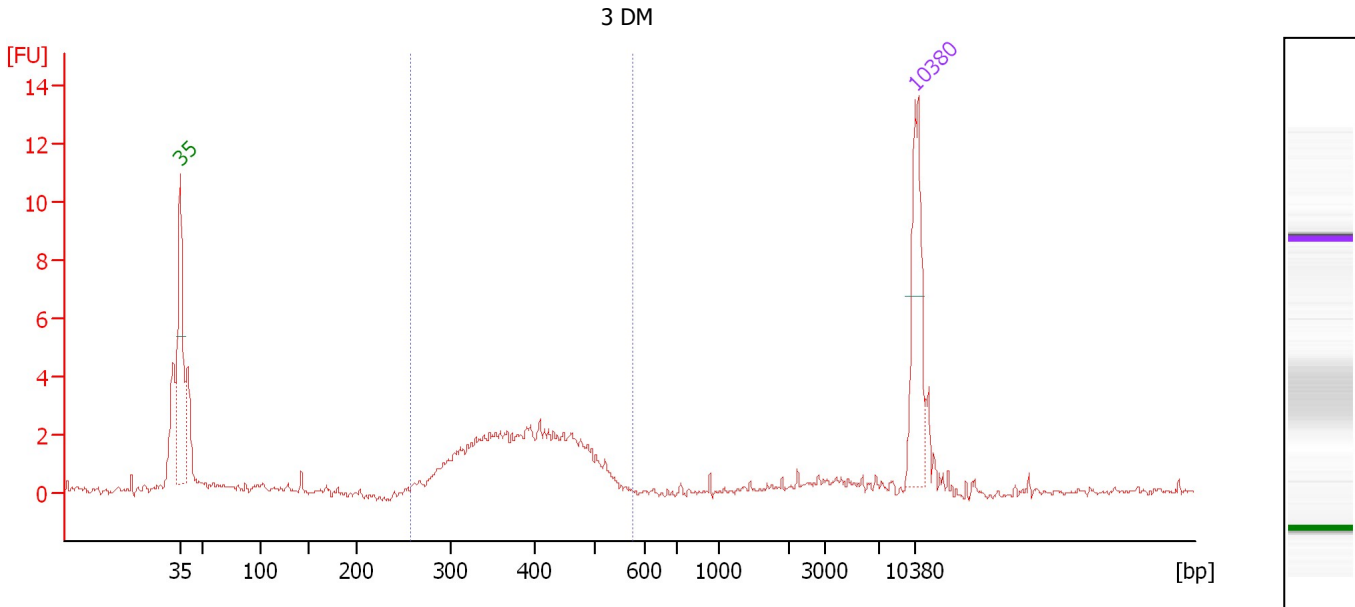
**Region table for sample 9 : THP4**

From [bp]	To [bp]	Average Size [bp]	Molarity [pmol/l]	Conc. [pg/μl]	Corr. Area	% of Total	Size distribution in CV [%]	Color
296	684	451	3,326.0	954.99	501.7	98	16.2	Blue

Assay Class: High Sensitivity DNA Assay  
 Data Path: C:\...ents and Settings\Bioanalyzer\2012-07-18\2012-07-18\_001.xad

Created: 7/18/2012 10:31:57 AM  
 Modified: 7/18/2012 11:13:17 AM

**Electropherogram Summary Continued ...**



**Overall Results for sample 10 : 3 DM**

Number of peaks found: 0      Corr. Area 1: 37.3  
 Noise: 0.1

**Peak table for sample 10 : 3 DM**

Peak	Size [bp]	Conc. [pg/μl]	Molarity [pmol/l]	Observations
1	35	125.00	5,411.3	Lower Marker
2	10,380	75.00	10.9	Upper Marker

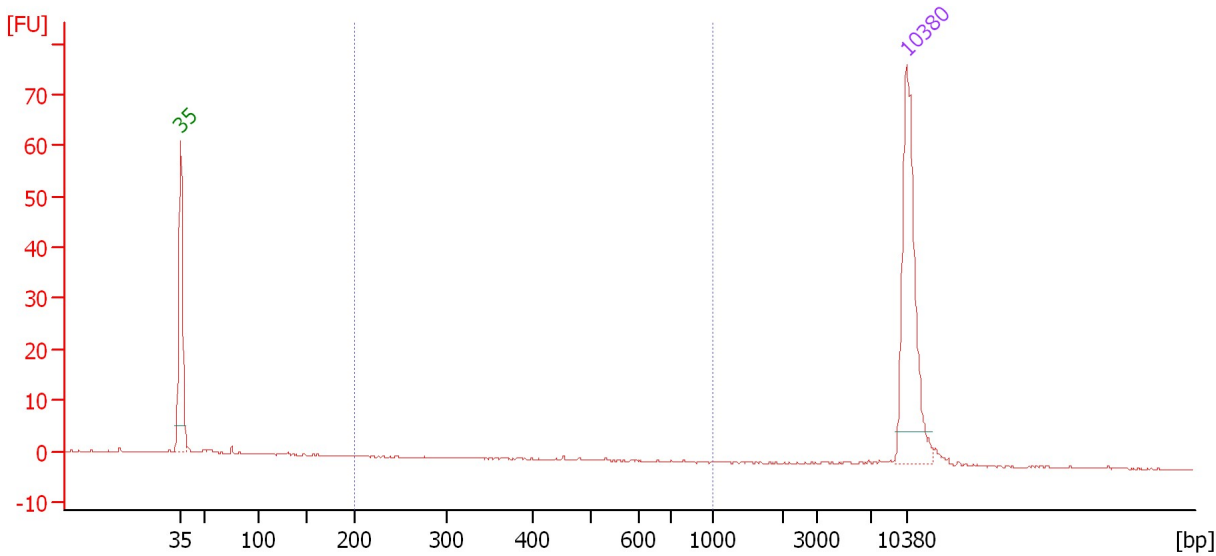
**Region table for sample 10 : 3 DM**

From [bp]	To [bp]	Average Size [bp]	Molarity [pmol/l]	Conc. [pg/μl]	Corr. Area	% of Total	Size distribution in CV [%]	Color
258	578	393	1,288.6	321.71	37.3	62	16.8	Blue

Assay Class: High Sensitivity DNA Assay  
 Data Path: C:\...ents and Settings\Bioanalyzer\2012-07-18\2012-07-18\_001.xad

Created: 7/18/2012 10:31:57 AM  
 Modified: 7/18/2012 11:13:17 AM

**Electropherogram Summary Continued ...**



**Overall Results for sample 11 :**

Number of peaks found: 0                      Corr. Area 1: 0.7  
 Noise: 0.1

**Peak table for sample 11 :**

Peak	Size [bp]	Conc. [pg/μl]	Molarity [pmol/l]	Observations
1	35	125.00	5,411.3	Lower Marker
2	10,380	75.00	10.9	Upper Marker

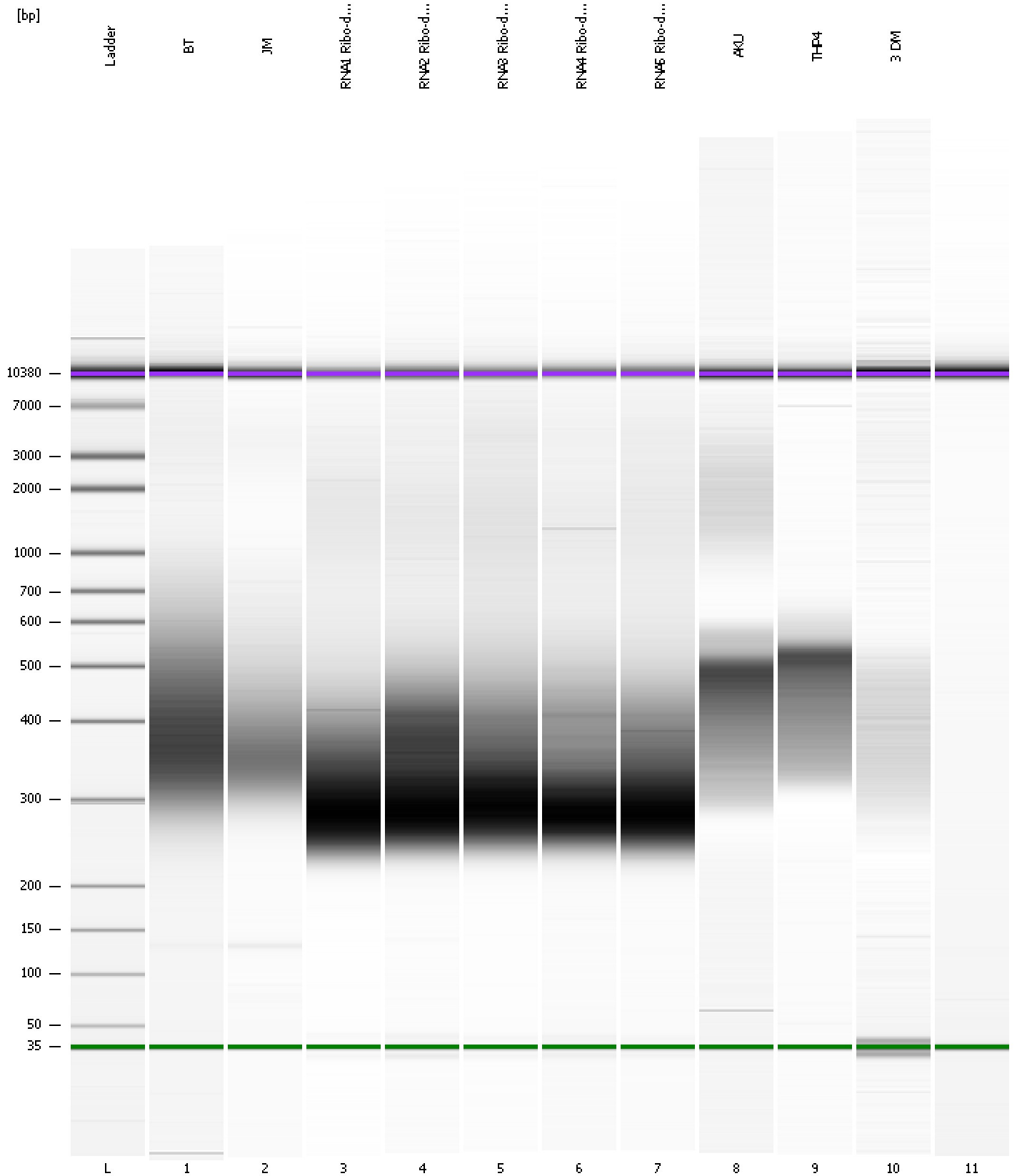
**Region table for sample 11 :**

From [bp]	To [bp]	Average Size [bp]	Molarity [pmol/l]	Conc. [pg/μl]	Corr. Area	% of Total	Size distribution in CV [%]	Color
200	1,000	516	2.5	0.78	0.7	5	22.4	Blue

Assay Class: High Sensitivity DNA Assay  
Data Path: C:\...ents and Settings\Bioanalyzer\2012-07-18\2012-07-18\_001.xad

Created: 7/18/2012 10:31:57 AM  
Modified: 7/18/2012 11:13:17 AM

**Gel Image**





Assay Class: High Sensitivity DNA Assay  
Data Path: C:\...ents and Settings\Bioanalyzer\2012-07-18\2012-07-18\_001.xad

Created: 7/18/2012 10:31:57 AM  
Modified: 7/18/2012 11:13:17 AM

**Curves**

**Standard Curve**

