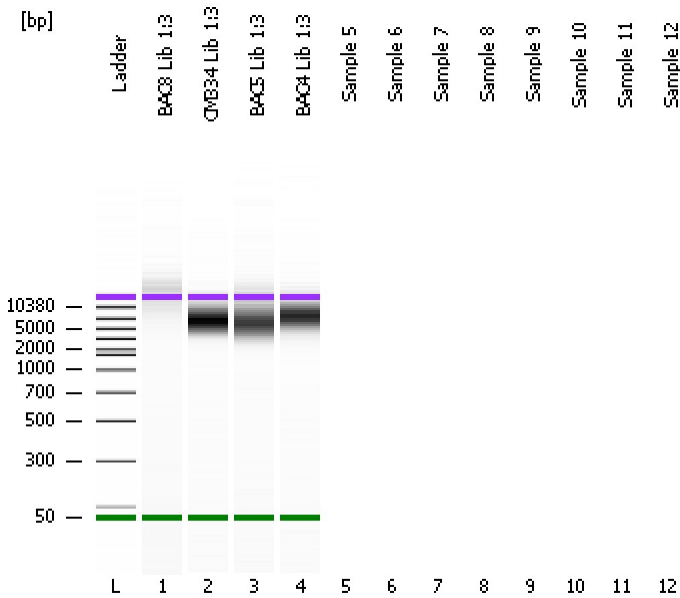


Assay Class: DNA 12000  
Data Path: C:\...ents and Settings\Bioanalyzer\2012-07-18\2012-07-18\_002.xad

Created: 7/18/2012 11:51:50 AM  
Modified: 7/18/2012 12:14:04 PM

**Electrophoresis File Run Summary**



Instrument Information:

Instrument Name: DE13701086      Firmware: C.01.069  
Serial#: DE13701086      Type: G2938B

Assay Information:

Assay Origin Path: C:\Program Files\Agilent\2100 bioanalyzer\2100 expert\assays\dsDNA\DNA 12000 Series II.xsy

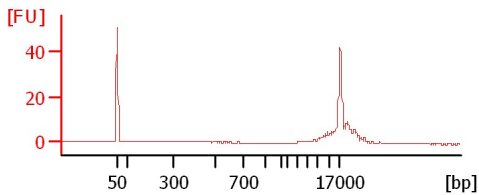
Assay Class: DNA 12000  
Version: 2.4  
Assay Comments: DNA Analysis 100 -12000 bp

© Copyright 2003-2009 Agilent Technologies, Inc.

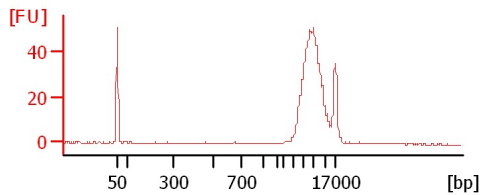
Chip Information:

Chip Lot #:      Reagent Kit Lot #:      Chip Comments:

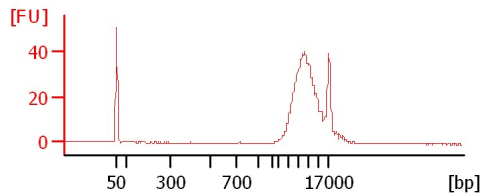
**BAC8 Lib 1:3**



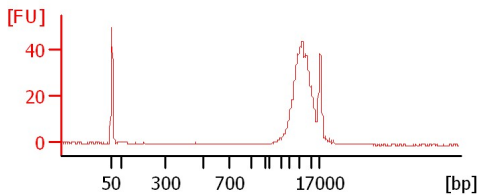
**CM334 Lib 1:3**



**BAC5 Lib 1:3**



**BAC4 Lib 1:3**



Assay Class: DNA 12000  
 Data Path: C:\...ents and Settings\Bioanalyzer\2012-07-18\2012-07-18\_002.xad

Created: 7/18/2012 11:51:50 AM  
 Modified: 7/18/2012 12:14:04 PM

**Electrophoresis File Run Summary (Chip Summary)**

Sample Name	Sample Comment	Rest. Digest	Status	Observation	Result Label	Result Color
BAC8 Lib 1:3		<input type="checkbox"/>	✓			
CM334 Lib 1:3		<input type="checkbox"/>	✓			
BAC5 Lib 1:3		<input type="checkbox"/>	✓			
BAC4 Lib 1:3		<input type="checkbox"/>	✓			
Sample 5		<input type="checkbox"/>				
Sample 6		<input type="checkbox"/>				
Sample 7		<input type="checkbox"/>				
Sample 8		<input type="checkbox"/>				
Sample 9		<input type="checkbox"/>				
Sample 10		<input type="checkbox"/>				
Sample 11		<input type="checkbox"/>				
Sample 12		<input type="checkbox"/>				
Ladder		<input type="checkbox"/>	✓			

**Chip Lot #**

**Reagent Kit Lot #**

**Chip Comments :**

Assay Class: DNA 12000  
Data Path: C:\...ents and Settings\Bioanalyzer\2012-07-18\2012-07-18\_002.xad

Created: 7/18/2012 11:51:50 AM  
Modified: 7/18/2012 12:14:04 PM

**Electrophoresis Assay Details**

**General Analysis Settings**

Number of Available Sample and Ladder Wells (Max.) : 13  
Minimum Visible Range [s] : 20  
Maximum Visible Range [s] : 99  
Start Analysis Time Range [s] : 20  
End Analysis Time Range [s] : 98.95  
Ladder Concentration [ng/μl] : 44  
Uses Standard Area for Ladder Fragments  
Lower Marker Concentration [ng/μl] : 8.3  
Upper Marker Concentration [ng/μl] : 4.2  
Used Upper Marker for Quantitation  
This is a Qualitative Assay Only  
Standard Curve Fit is Point to Point  
Show Data Aligned to Lower and Upper Marker

**Integrator Settings**

Integration Start Time [s] : 20  
Integration End Time [s] : 98.95  
Slope Threshold : 0.8  
Height Threshold [FU] : 20  
Area Threshold : 0.1  
Width Threshold [s] : 0.5  
Baseline Plateau [s] : 0.5

**Filter Settings**

Filter Width [s] : 0.5  
Polynomial Order : 4

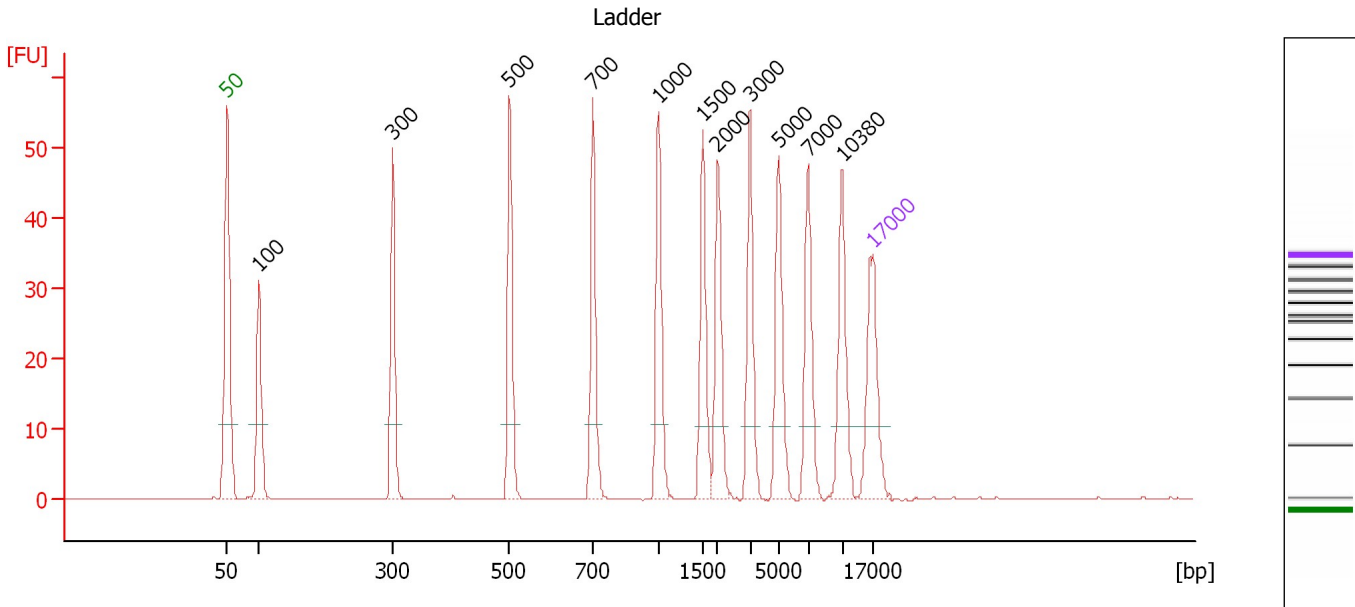
**Ladder**

Ladder Peak	Size	Area
1	50	120
2	100	48
3	300	61
4	500	77
5	700	81
6	1000	86
7	1500	92
8	2000	92
9	3000	96
10	5000	100
11	7000	98
12	10380	102
13	17000	110

Assay Class: DNA 12000  
 Data Path: C:\...ents and Settings\Bioanalyzer\2012-07-18\2012-07-18\_002.xad

Created: 7/18/2012 11:51:50 AM  
 Modified: 7/18/2012 12:14:04 PM

**Electropherogram Summary**



**Peak table for Ladder**

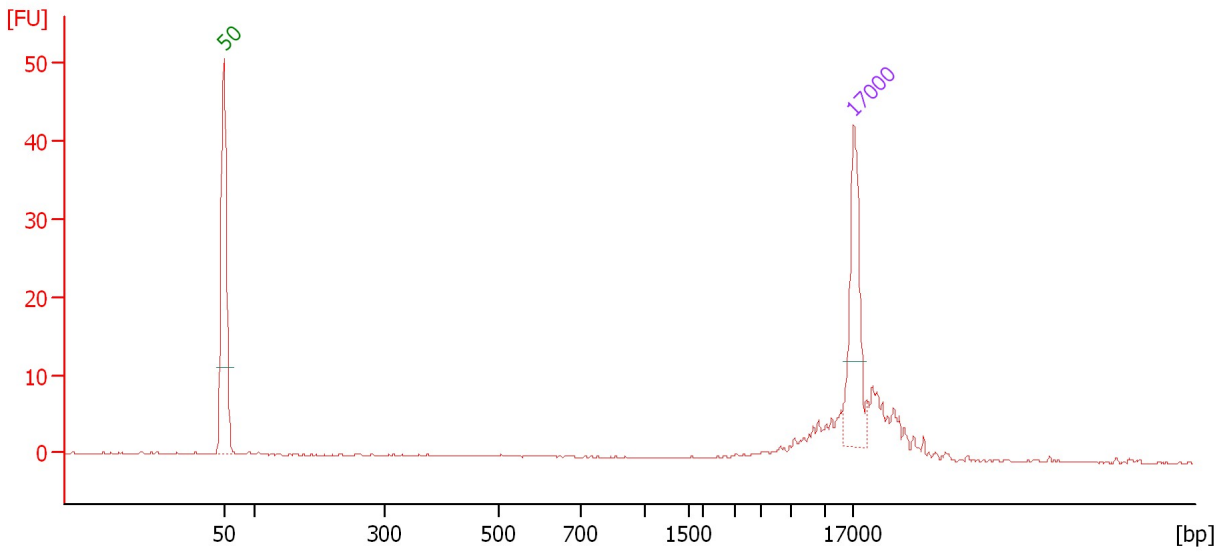
Peak	Size [bp]	Conc. [ng/μl]	Molarity [nmol/l]	Observations
1	50	8.30	251.5	Lower Marker
2	100	4.00	60.6	Ladder Peak
3	300	4.00	20.2	Ladder Peak
4	500	4.00	12.1	Ladder Peak
5	700	4.00	8.7	Ladder Peak
6	1,000	4.00	6.1	Ladder Peak
7	1,500	4.00	4.0	Ladder Peak
8	2,000	4.00	3.0	Ladder Peak
9	3,000	4.00	2.0	Ladder Peak
10	5,000	4.00	1.2	Ladder Peak
11	7,000	4.00	0.9	Ladder Peak
12	10,380	4.00	0.6	Ladder Peak
13	17,000	4.20	0.4	Upper Marker

Assay Class: DNA 12000  
Data Path: C:\...ents and Settings\Bioanalyzer\2012-07-18\2012-07-18\_002.xad

Created: 7/18/2012 11:51:50 AM  
Modified: 7/18/2012 12:14:04 PM

**Electropherogram Summary Continued ...**

BAC8 Lib 1:3



**Overall Results for sample 1 : BAC8 Lib 1:3**

Number of peaks found: 0

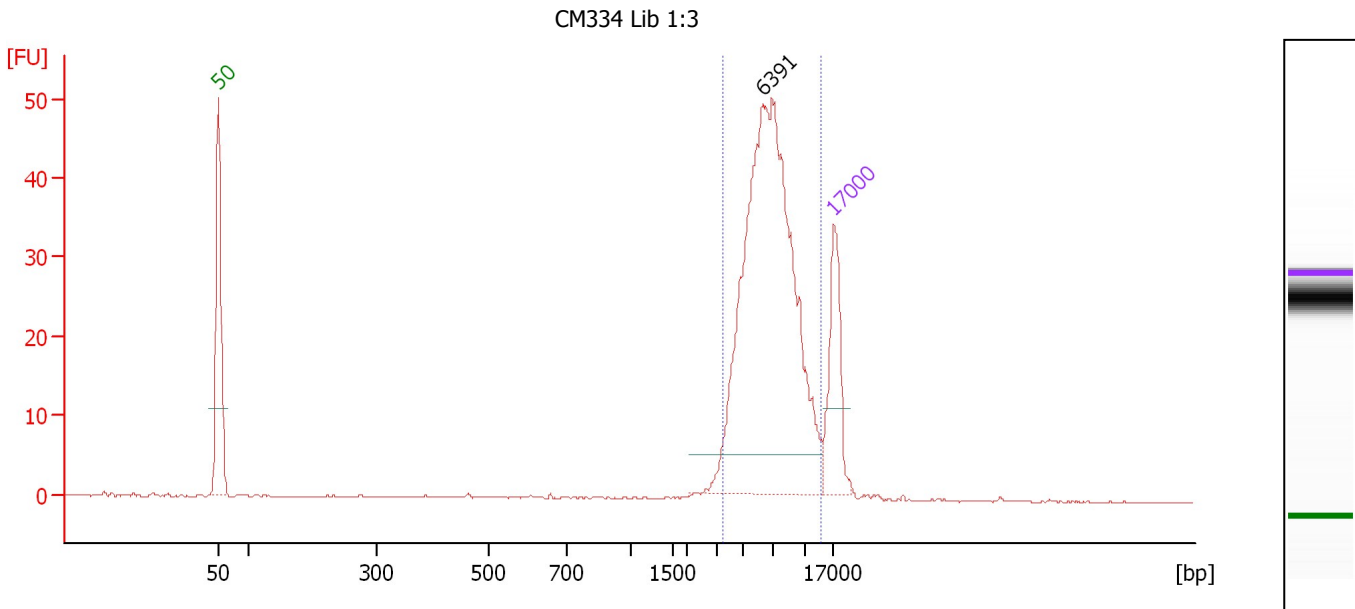
**Peak table for sample 1 : BAC8 Lib 1:3**

Peak	Size [bp]	Conc. [ng/μl]	Molarity [nmol/l]	Observations
1	50	8.30	251.5	Lower Marker
2	17,000	4.20	0.4	Upper Marker

Assay Class: DNA 12000  
 Data Path: C:\...ents and Settings\Bioanalyzer\2012-07-18\2012-07-18\_002.xad

Created: 7/18/2012 11:51:50 AM  
 Modified: 7/18/2012 12:14:04 PM

**Electropherogram Summary Continued ...**



**Setpoint Deviations for sample 2 : CM334 Lib 1:3**

Height Threshold [FU] : 5

**Overall Results for sample 2 : CM334 Lib 1:3**

Number of peaks found: 1 Area 1: 206.8

**Peak table for sample 2 : CM334 Lib 1:3**

Peak	Size [bp]	Conc. [ng/μl]	Molarity [nmol/l]	Observations
1	50	8.30	251.5	Lower Marker
2	6,391	28.68	6.8	
3	17,000	4.20	0.4	Upper Marker

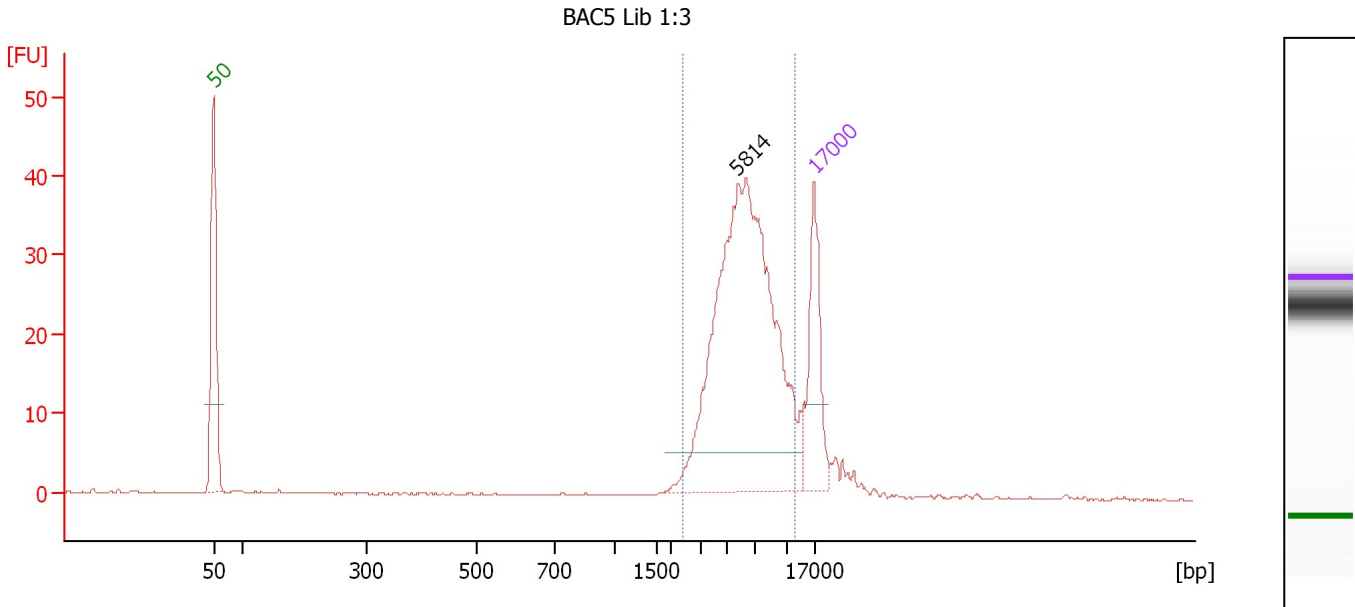
**Region table for sample 2 : CM334 Lib 1:3**

From [bp]	To [bp]	Average Size [bp]	Conc. [ng/μl]	Area	% of Total	Size distribution in CV [%]	Color
3,409	14,059	7,093	28.74	206.8	92	28.5	Blue

Assay Class: DNA 12000  
 Data Path: C:\...ents and Settings\Bioanalyzer\2012-07-18\2012-07-18\_002.xad

Created: 7/18/2012 11:51:50 AM  
 Modified: 7/18/2012 12:14:04 PM

**Electropherogram Summary Continued ...**



**Setpoint Deviations for sample 3 : BAC5 Lib 1:3**

Height Threshold [FU] : 5

**Overall Results for sample 3 : BAC5 Lib 1:3**

Number of peaks found: 1 Area 1: 185.8

**Peak table for sample 3 : BAC5 Lib 1:3**

Peak	Size [bp]	Conc. [ng/μl]	Molarity [nmol/l]	Observations
1	50	8.30	251.5	Lower Marker
2	5,814	23.41	6.1	
3	17,000	4.20	0.4	Upper Marker

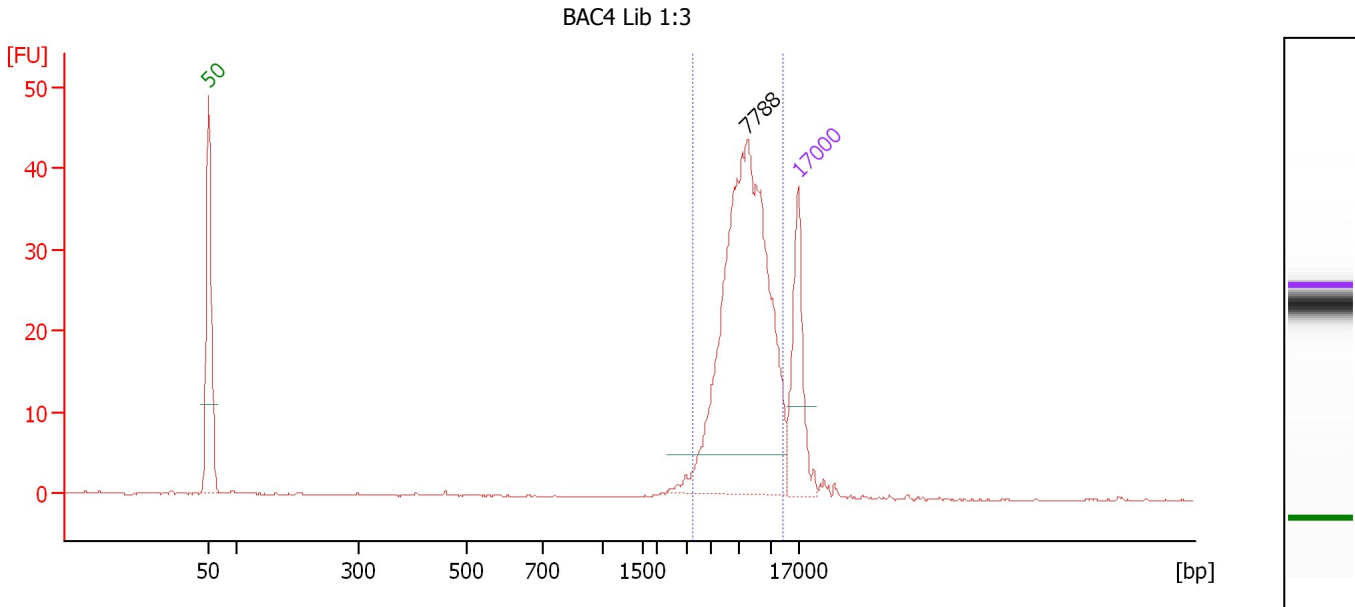
**Region table for sample 3 : BAC5 Lib 1:3**

From [bp]	To [bp]	Average Size [bp]	Conc. [ng/μl]	Area	% of Total	Size distribution in CV [%]	Color
2,429	12,294	6,449	23.16	185.8	88	32.7	Blue

Assay Class: DNA 12000  
 Data Path: C:\...ents and Settings\Bioanalyzer\2012-07-18\2012-07-18\_002.xad

Created: 7/18/2012 11:51:50 AM  
 Modified: 7/18/2012 12:14:04 PM

**Electropherogram Summary Continued ...**



**Setpoint Deviations for sample 4 : BAC4 Lib 1:3**

Height Threshold [FU] : 5

**Overall Results for sample 4 : BAC4 Lib 1:3**

Number of peaks found: 1                      Area 1: 160.7

**Peak table for sample 4 : BAC4 Lib 1:3**

Peak	Size [bp]	Conc. [ng/μl]	Molarity [nmol/l]	Observations
1	50	8.30	251.5	Lower Marker
2	7,788	22.83	4.4	
3	17,000	4.20	0.4	Upper Marker

**Region table for sample 4 : BAC4 Lib 1:3**

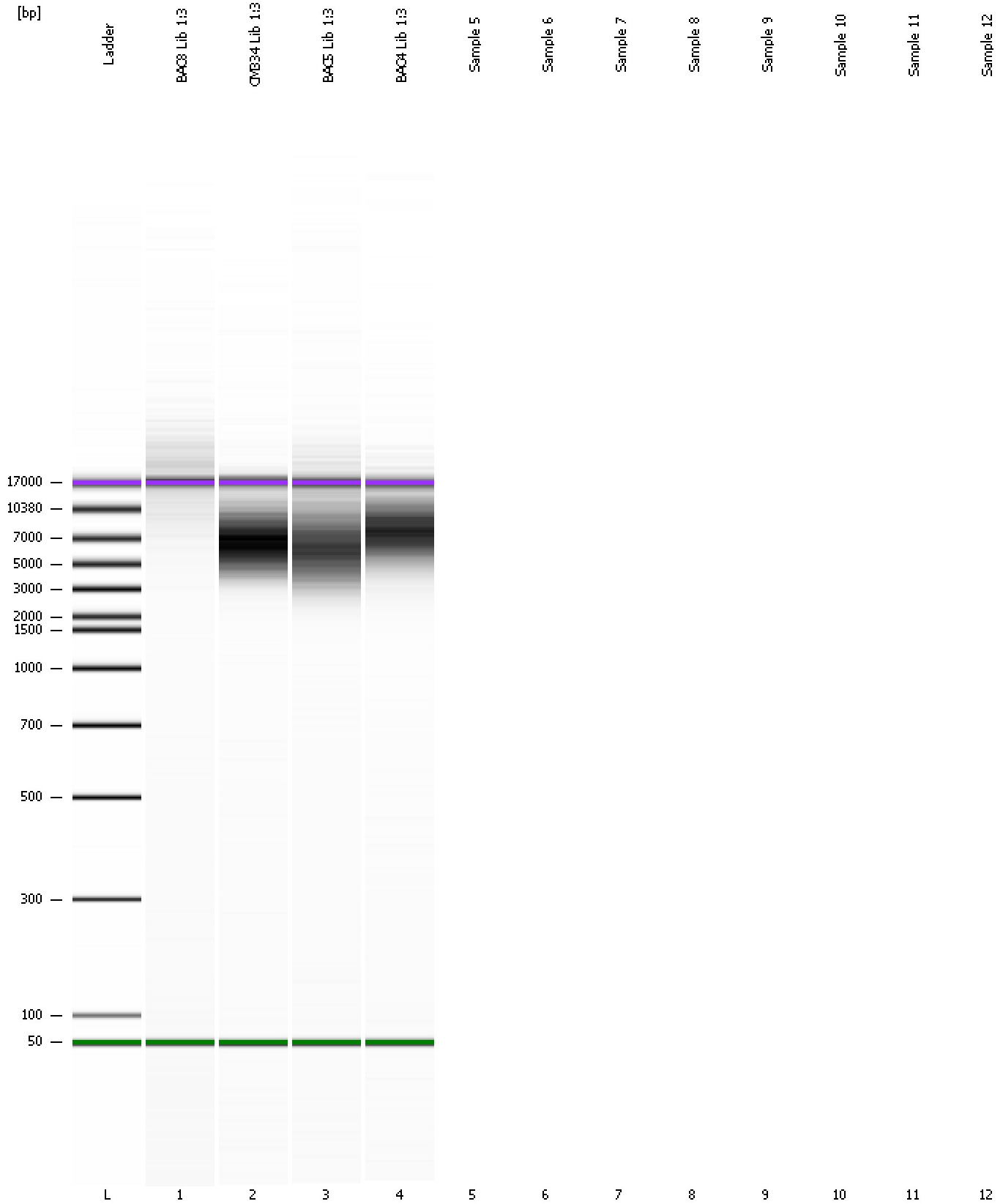
From [bp]	To [bp]	Average Size [bp]	Conc. [ng/μl]	Area	% of Total	Size distribution in CV [%]	Color
3,509	13,435	7,852	22.17	160.7	94	25.7	Blue



Assay Class: DNA 12000  
Data Path: C:\...ents and Settings\Bioanalyzer\2012-07-18\2012-07-18\_002.xad

Created: 7/18/2012 11:51:50 AM  
Modified: 7/18/2012 12:14:04 PM

**Gel Image**

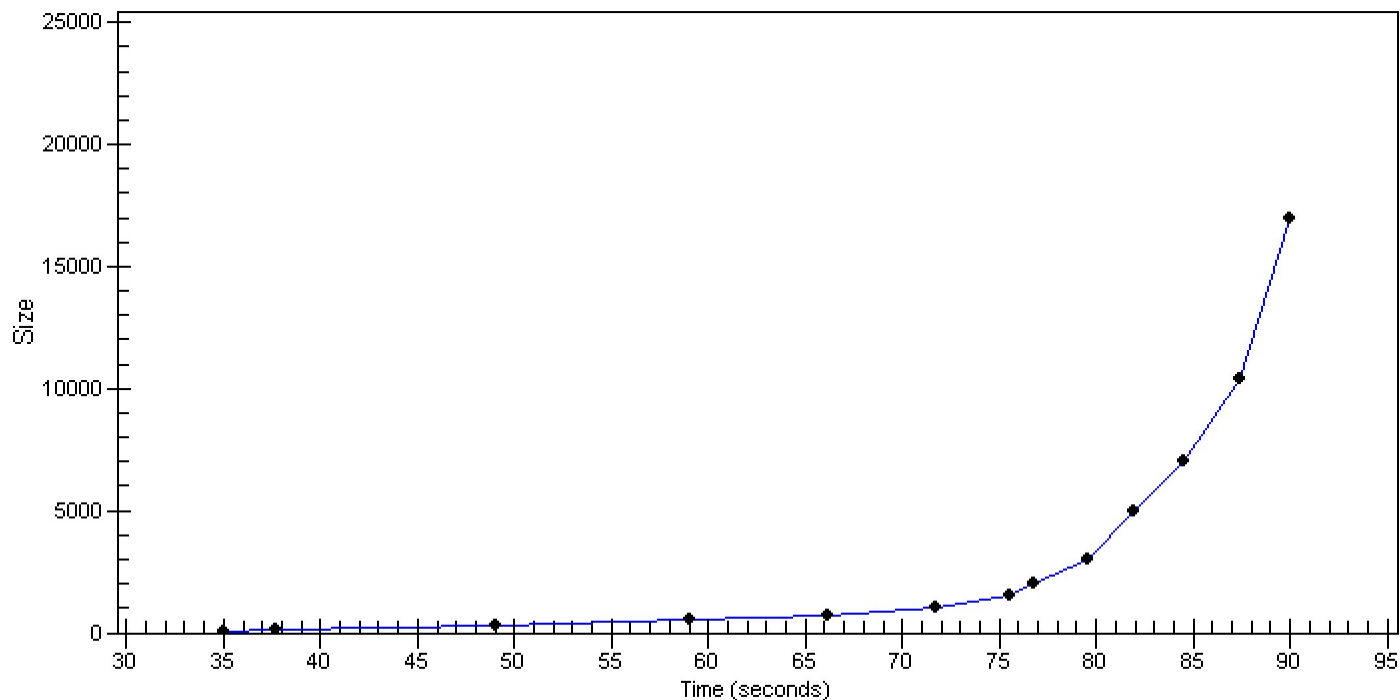


Assay Class: DNA 12000  
Data Path: C:\...ents and Settings\Bioanalyzer\2012-07-18\2012-07-18\_002.xad

Created: 7/18/2012 11:51:50 AM  
Modified: 7/18/2012 12:14:04 PM

**Curves**

**Standard Curve**



Assay Class: DNA 12000  
Data Path: C:\...ents and Settings\Bioanalyzer\2012-07-18\2012-07-18\_002.xad

Created: 7/18/2012 11:51:50 AM  
Modified: 7/18/2012 12:14:04 PM

**Invalid Samples**

Sample 5 has not been run, no results available.

Sample 6 has not been run, no results available.

Sample 7 has not been run, no results available.

Sample 8 has not been run, no results available.

Sample 9 has not been run, no results available.

Sample 10 has not been run, no results available.

Sample 11 has not been run, no results available.

Sample 12 has not been run, no results available.