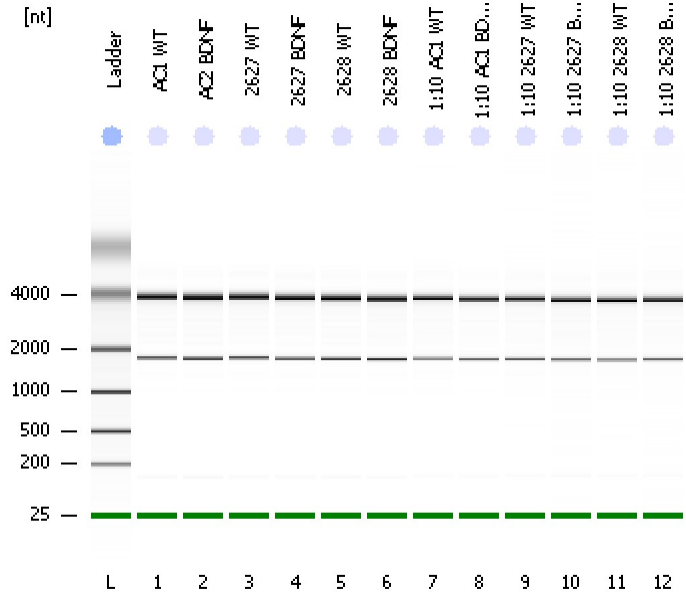


Assay Class: Eukaryote Total RNA Nano
Data Path: C:\...ents and Settings\Bioanalyzer\2012-07-19\2012-07-19_001.xad

Created: 7/19/2012 9:32:52 AM
Modified: 7/19/2012 9:56:44 AM

Electrophoresis File Run Summary



Instrument Information:

Instrument Name: DE13701086 Firmware: C.01.069
Serial#: DE13701086 Type: G2938B

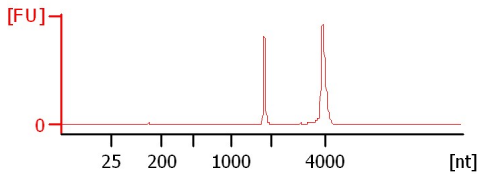
Assay Information:

Assay Origin Path: C:\Program Files\Agilent\2100 bioanalyzer\2100 expert\assays\RNA\Eukaryote Total RNA Nano Series II.xsy
Assay Class: Eukaryote Total RNA Nano
Version: 2.6
Assay Comments: Total RNA Analysis ng sensitivity (Eukaryote)
© Copyright 2003 - 2009 Agilent Technologies, Inc.

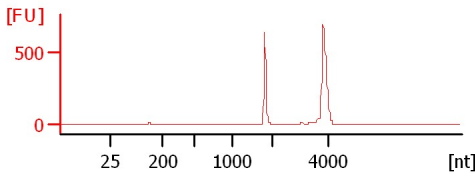
Chip Information:

Chip Lot #:
Reagent Kit Lot #:
Chip Comments:

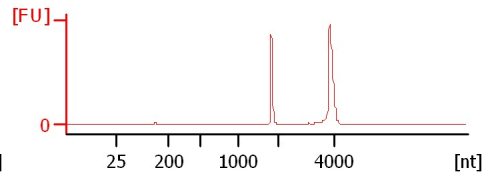
AC1 WT
RIN:10



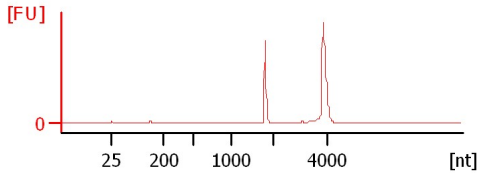
AC2 BDNF
RIN:10



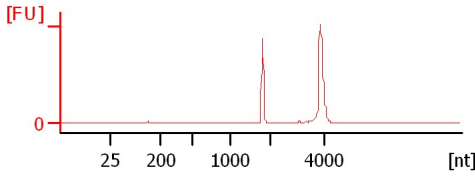
2627 WT
RIN:10



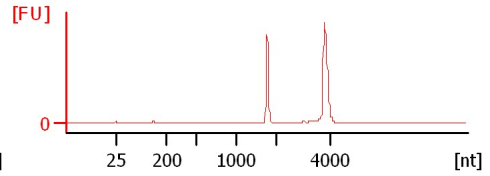
2627 BDNF
RIN:10



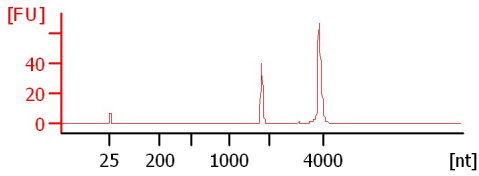
2628 WT
RIN:10



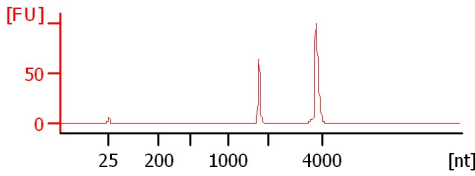
2628 BDNF
RIN:10



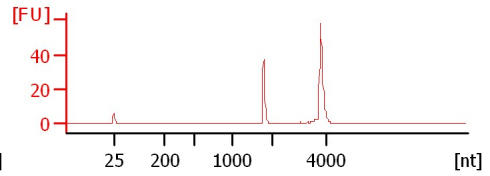
1:10 AC1 WT
RIN:10



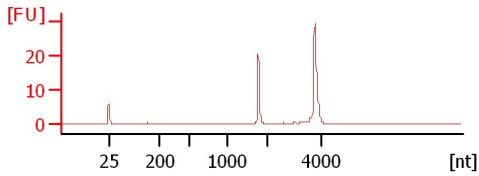
1:10 AC1 BDNF
RIN:10



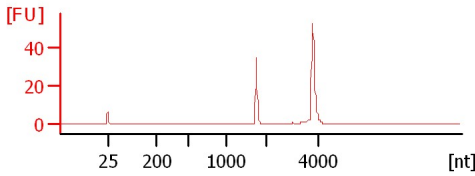
1:10 2627 WT
RIN:10



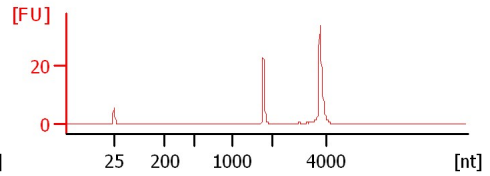
1:10 2627 BDNF
RIN:10



1:10 2628 WT
RIN:10



1:10 2628 BDNF
RIN:10



Assay Class: Eukaryote Total RNA Nano
 Data Path: C:\...ents and Settings\Bioanalyzer\2012-07-19\2012-07-19_001.xad

Created: 7/19/2012 9:32:52 AM
 Modified: 7/19/2012 9:56:44 AM

Electrophoresis File Run Summary (Chip Summary)

Sample Name	Sample Comment	Status	Result Label	Result Color
AC1 WT		✓	RIN:10	
AC2 BDNF		✓	RIN:10	
2627 WT		✓	RIN:10	
2627 BDNF		✓	RIN:10	
2628 WT		✓	RIN:10	
2628 BDNF		✓	RIN:10	
1:10 AC1 WT		✓	RIN:10	
1:10 AC1 BDNF		✓	RIN:10	
1:10 2627 WT		✓	RIN:10	
1:10 2627 BDNF		✓	RIN:10	
1:10 2628 WT		✓	RIN:10	
1:10 2628 BDNF		✓	RIN:10	
Ladder		✓	All Other Samples	

Chip Lot #

Reagent Kit Lot #

Chip Comments :

Assay Class: Eukaryote Total RNA Nano
Data Path: C:\...ents and Settings\Bioanalyzer\2012-07-19\2012-07-19_001.xad

Created: 7/19/2012 9:32:52 AM
Modified: 7/19/2012 9:56:44 AM

Electrophoresis Assay Details

General Analysis Settings

Number of Available Sample and Ladder Wells (Max.) : 13
Minimum Visible Range [s] : 17
Maximum Visible Range [s] : 70
Start Analysis Time Range [s] : 19
End Analysis Time Range [s] : 69
Ladder Concentration [ng/μl] : 150
Lower Marker Concentration [ng/μl] : 0
Upper Marker Concentration [ng/μl] : 0
Used Lower Marker for Quantitation
Standard Curve Fit is Logarithmic
Show Data Aligned to Lower Marker

Integrator Settings

Integration Start Time [s] : 19
Integration End Time [s] : 69
Slope Threshold : 0.6
Height Threshold [FU] : 0.5
Area Threshold : 0.2
Width Threshold [s] : 0.5
Baseline Plateau [s] : 6

Filter Settings

Filter Width [s] : 0.5
Polynomial Order : 4

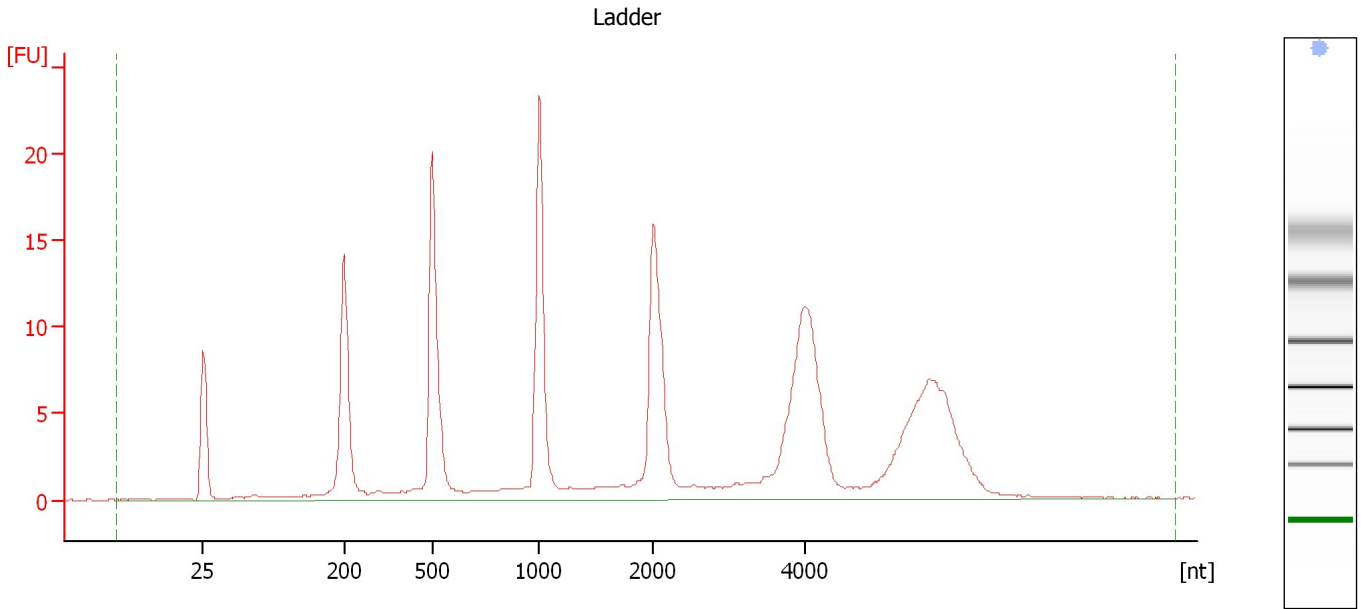
Ladder

Ladder Peak	Size
1	25
2	200
3	500
4	1000
5	2000
6	4000

Assay Class: Eukaryote Total RNA Nano
Data Path: C:\...ents and Settings\Bioanalyzer\2012-07-19\2012-07-19_001.xad

Created: 7/19/2012 9:32:52 AM
Modified: 7/19/2012 9:56:44 AM

Electropherogram Summary



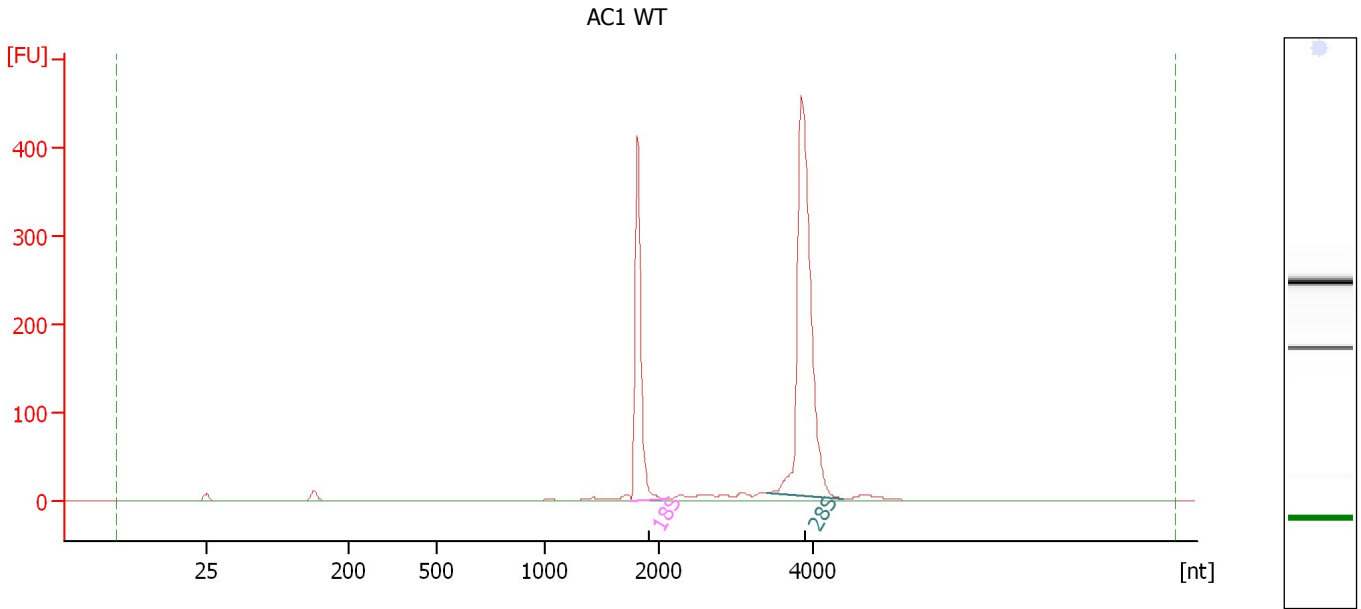
Overall Results for Ladder

RNA Area:	196.4	Result Flagging Color:	
RNA Concentration:	150 ng/μl	Result Flagging Label:	All Other Samples

Assay Class: Eukaryote Total RNA Nano
Data Path: C:\...ents and Settings\Bioanalyzer\2012-07-19\2012-07-19_001.xad

Created: 7/19/2012 9:32:52 AM
Modified: 7/19/2012 9:56:44 AM

Electropherogram Summary Continued ...



Overall Results for sample 1 : AC1 WT

RNA Area:	1,095.5	RNA Integrity Number (RIN):	10 (B.02.08)
RNA Concentration:	836 ng/μl	Result Flagging Color:	
rRNA Ratio [28s / 18s]:	2.0	Result Flagging Label:	RIN:10

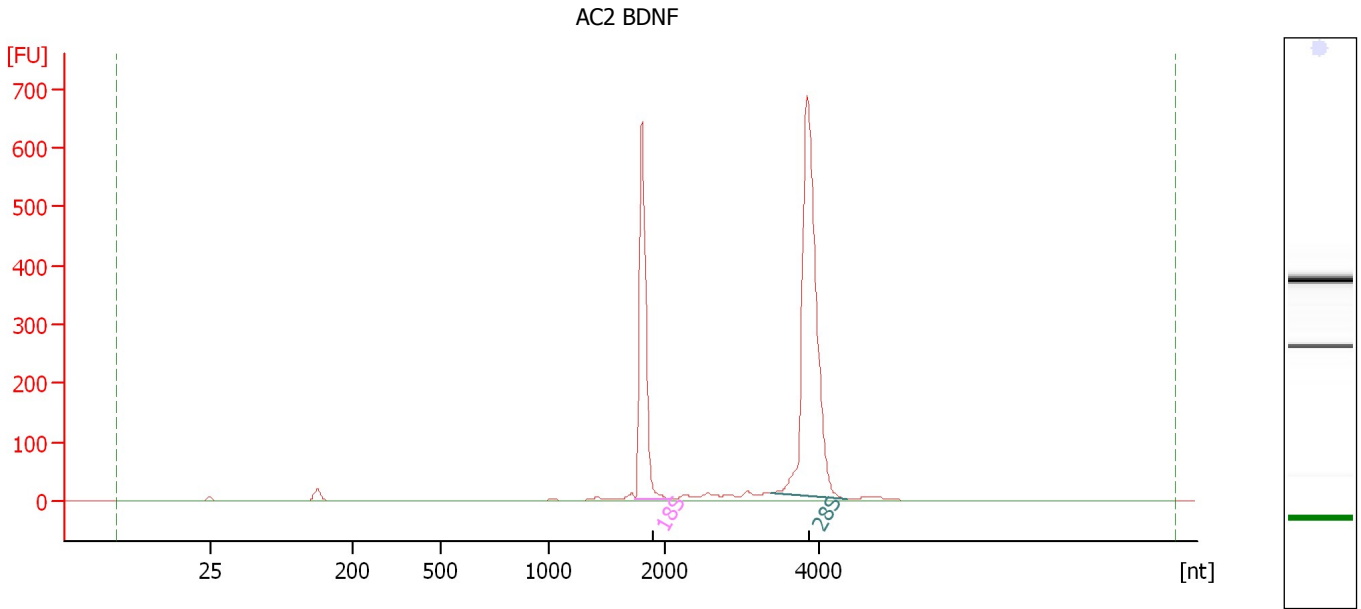
Fragment table for sample 1 : AC1 WT

Name	Start Size [nt]	End Size [nt]	Area	% of total Area
18S	1,752	2,088	310.0	28.3
28S	3,403	4,411	620.3	56.6

Assay Class: Eukaryote Total RNA Nano
Data Path: C:\...ents and Settings\Bioanalyzer\2012-07-19\2012-07-19_001.xad

Created: 7/19/2012 9:32:52 AM
Modified: 7/19/2012 9:56:44 AM

Electropherogram Summary Continued ...



Overall Results for sample 2 : AC2 BDNF

RNA Area: 1,749.8 RNA Integrity Number (RIN): 10 (B.02.08)
RNA Concentration: 1,336 ng/μl Result Flagging Color:
rRNA Ratio [28s / 18s]: 2.0 Result Flagging Label: RIN:10

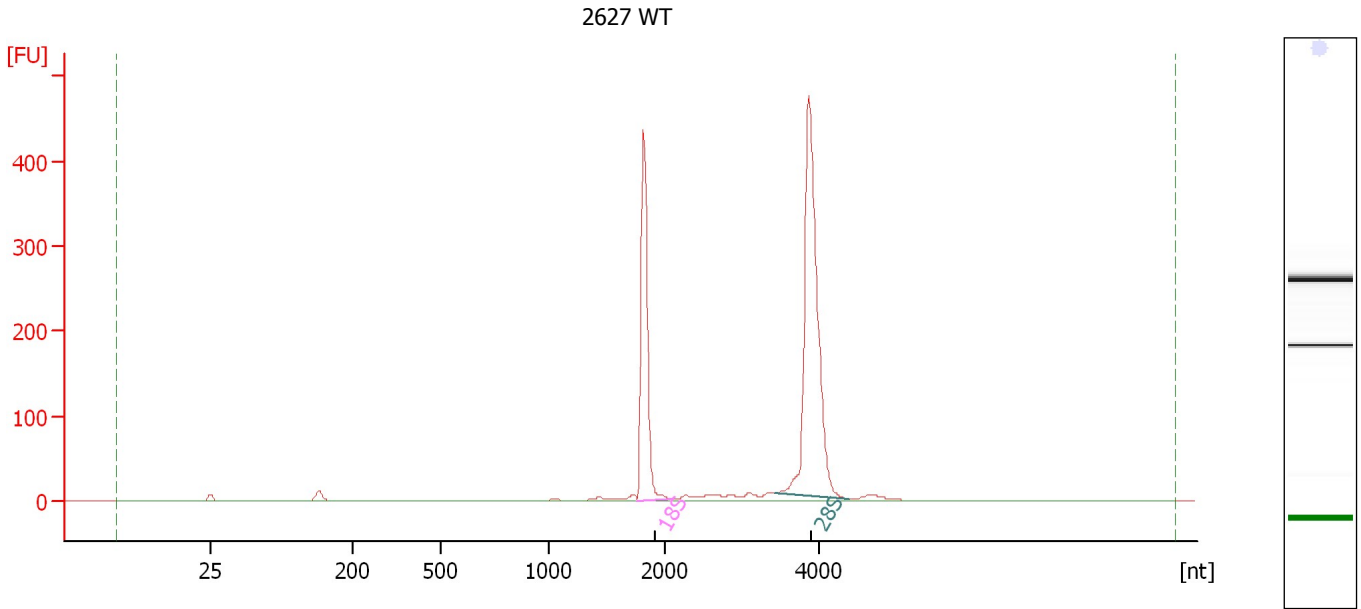
Fragment table for sample 2 : AC2 BDNF

Name	Start Size [nt]	End Size [nt]	Area	% of total Area
18S	1,738	2,078	497.0	28.4
28S	3,371	4,373	974.2	55.7

Assay Class: Eukaryote Total RNA Nano
Data Path: C:\...ents and Settings\Bioanalyzer\2012-07-19\2012-07-19_001.xad

Created: 7/19/2012 9:32:52 AM
Modified: 7/19/2012 9:56:44 AM

Electropherogram Summary Continued ...



Overall Results for sample 3 : 2627 WT

RNA Area: 1,120.2 RNA Integrity Number (RIN): 10 (B.02.08)
RNA Concentration: 855 ng/μl Result Flagging Color:
rRNA Ratio [28s / 18s]: 1.9 Result Flagging Label: RIN:10

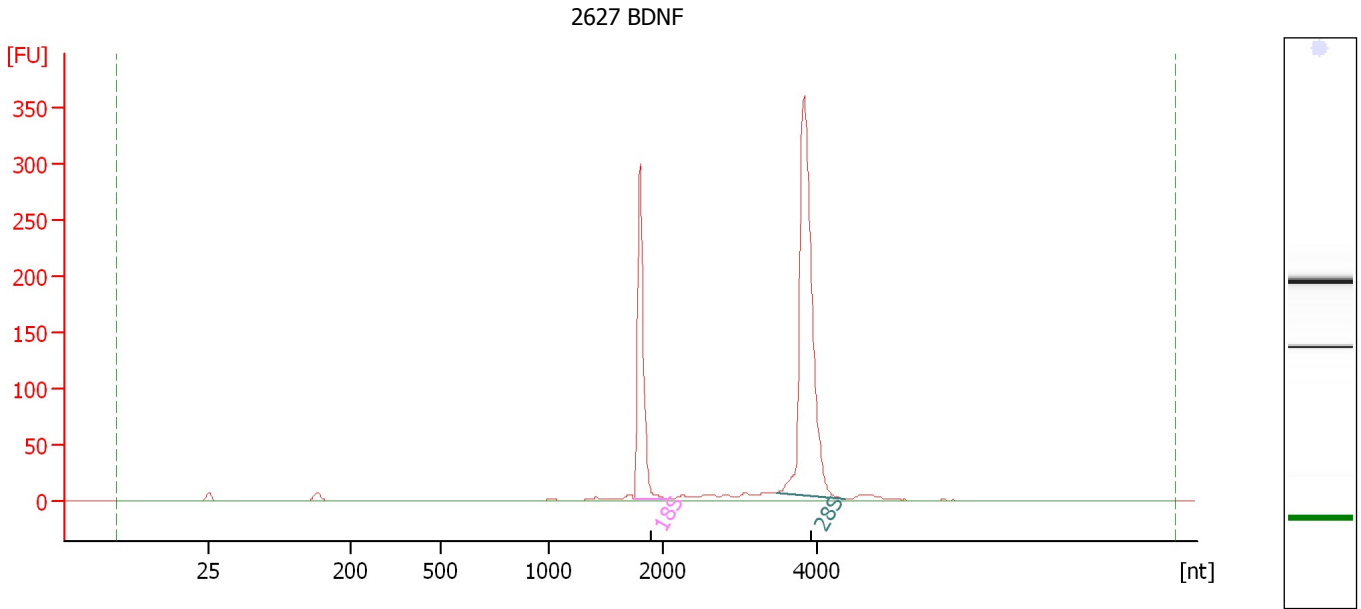
Fragment table for sample 3 : 2627 WT

Name	Start Size [nt]	End Size [nt]	Area	% of total Area
18S	1,756	2,092	321.7	28.7
28S	3,413	4,400	626.8	56.0

Assay Class: Eukaryote Total RNA Nano
Data Path: C:\...ents and Settings\Bioanalyzer\2012-07-19\2012-07-19_001.xad

Created: 7/19/2012 9:32:52 AM
Modified: 7/19/2012 9:56:44 AM

Electropherogram Summary Continued ...



Overall Results for sample 4 : 2627 BDNF

RNA Area:	800.5	RNA Integrity Number (RIN):	10 (B.02.08)
RNA Concentration:	611 ng/μl	Result Flagging Color:	
rRNA Ratio [28s / 18s]:	2.1	Result Flagging Label:	RIN:10

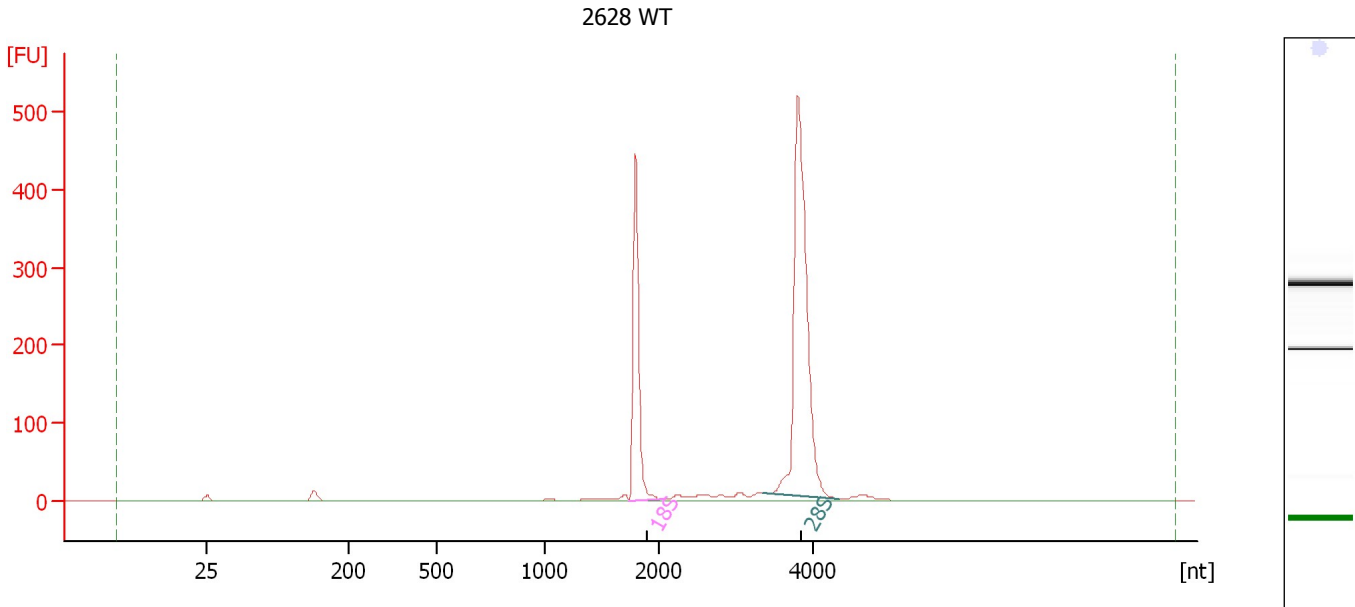
Fragment table for sample 4 : 2627 BDNF

Name	Start Size [nt]	End Size [nt]	Area	% of total Area
18S	1,745	2,049	215.0	26.9
28S	3,484	4,362	444.8	55.6

Assay Class: Eukaryote Total RNA Nano
Data Path: C:\...ents and Settings\Bioanalyzer\2012-07-19\2012-07-19_001.xad

Created: 7/19/2012 9:32:52 AM
Modified: 7/19/2012 9:56:44 AM

Electropherogram Summary Continued ...



Overall Results for sample 5 : 2628 WT

RNA Area: 1,184.0 RNA Integrity Number (RIN): 10 (B.02.08)
RNA Concentration: 904 ng/μl Result Flagging Color:
rRNA Ratio [28s / 18s]: 2.1 Result Flagging Label: RIN:10

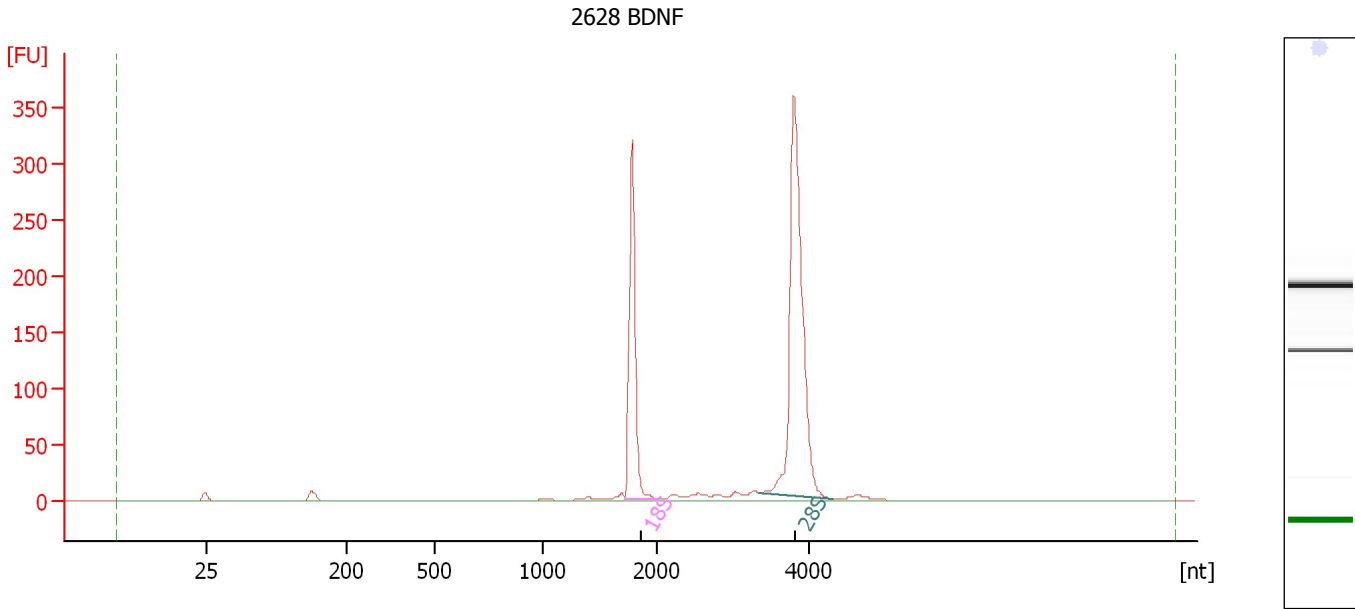
Fragment table for sample 5 : 2628 WT

Name	Start Size [nt]	End Size [nt]	Area	% of total Area
18S	1,733	2,060	330.5	27.9
28S	3,362	4,355	683.2	57.7

Assay Class: Eukaryote Total RNA Nano
Data Path: C:\...ents and Settings\Bioanalyzer\2012-07-19\2012-07-19_001.xad

Created: 7/19/2012 9:32:52 AM
Modified: 7/19/2012 9:56:44 AM

Electropherogram Summary Continued ...



Overall Results for sample 6 : 2628 BDNF

RNA Area: 831.0 RNA Integrity Number (RIN): 10 (B.02.08)
RNA Concentration: 635 ng/μl Result Flagging Color:
rRNA Ratio [28s / 18s]: 2.0 Result Flagging Label: RIN:10

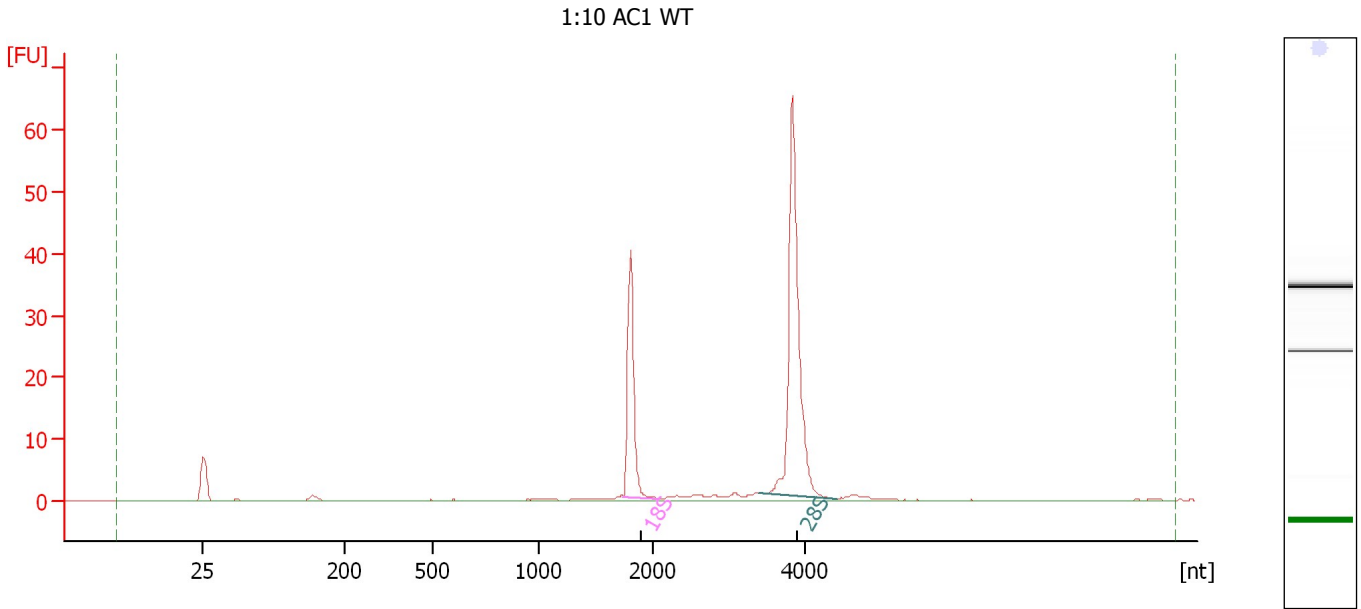
Fragment table for sample 6 : 2628 BDNF

Name	Start Size [nt]	End Size [nt]	Area	% of total Area
18S	1,722	2,031	232.9	28.0
28S	3,335	4,303	466.4	56.1

Assay Class: Eukaryote Total RNA Nano
Data Path: C:\...ents and Settings\Bioanalyzer\2012-07-19\2012-07-19_001.xad

Created: 7/19/2012 9:32:52 AM
Modified: 7/19/2012 9:56:44 AM

Electropherogram Summary Continued ...



Overall Results for sample 7 : 1:10 AC1 WT

RNA Area: 118.9 RNA Integrity Number (RIN): 10 (B.02.08)
RNA Concentration: 91 ng/μl Result Flagging Color:
rRNA Ratio [28s / 18s]: 2.4 Result Flagging Label: RIN:10

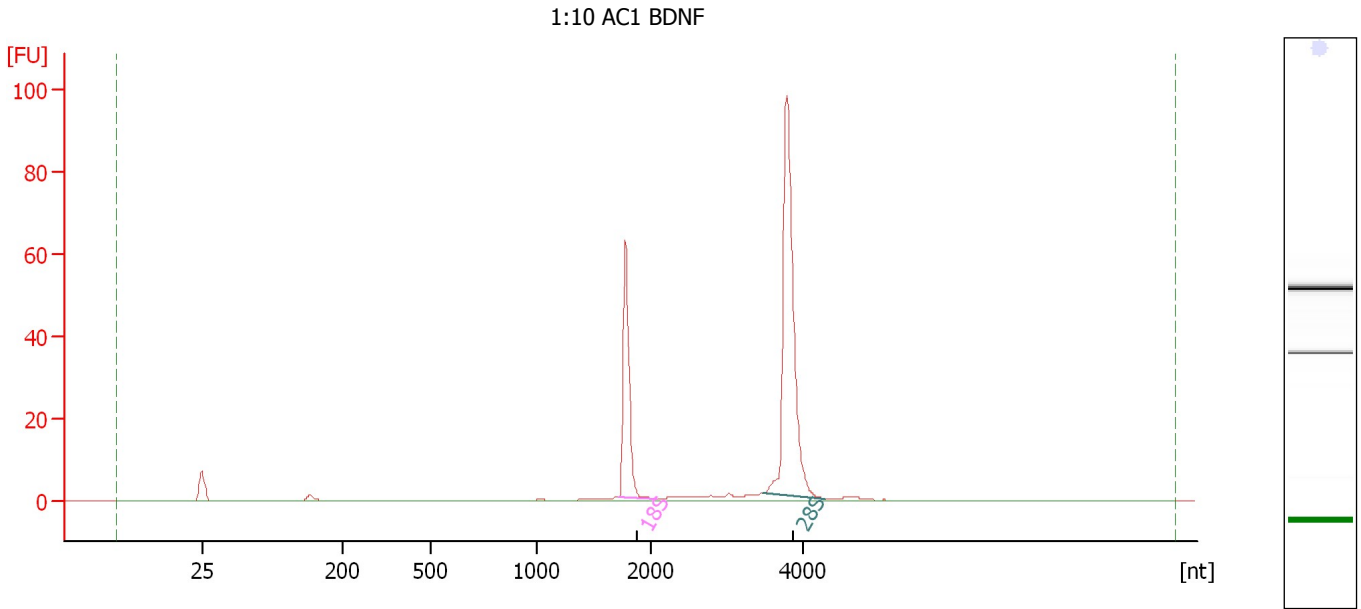
Fragment table for sample 7 : 1:10 AC1 WT

Name	Start Size [nt]	End Size [nt]	Area	% of total Area
18S	1,738	2,070	28.5	24.0
28S	3,394	4,408	67.2	56.5

Assay Class: Eukaryote Total RNA Nano
Data Path: C:\...ents and Settings\Bioanalyzer\2012-07-19\2012-07-19_001.xad

Created: 7/19/2012 9:32:52 AM
Modified: 7/19/2012 9:56:44 AM

Electropherogram Summary Continued ...



Overall Results for sample 8 : 1:10 AC1 BDNF

RNA Area: 178.8 RNA Integrity Number (RIN): 10 (B.02.08)
RNA Concentration: 137 ng/μl Result Flagging Color:
rRNA Ratio [28s / 18s]: 2.3 Result Flagging Label: RIN:10

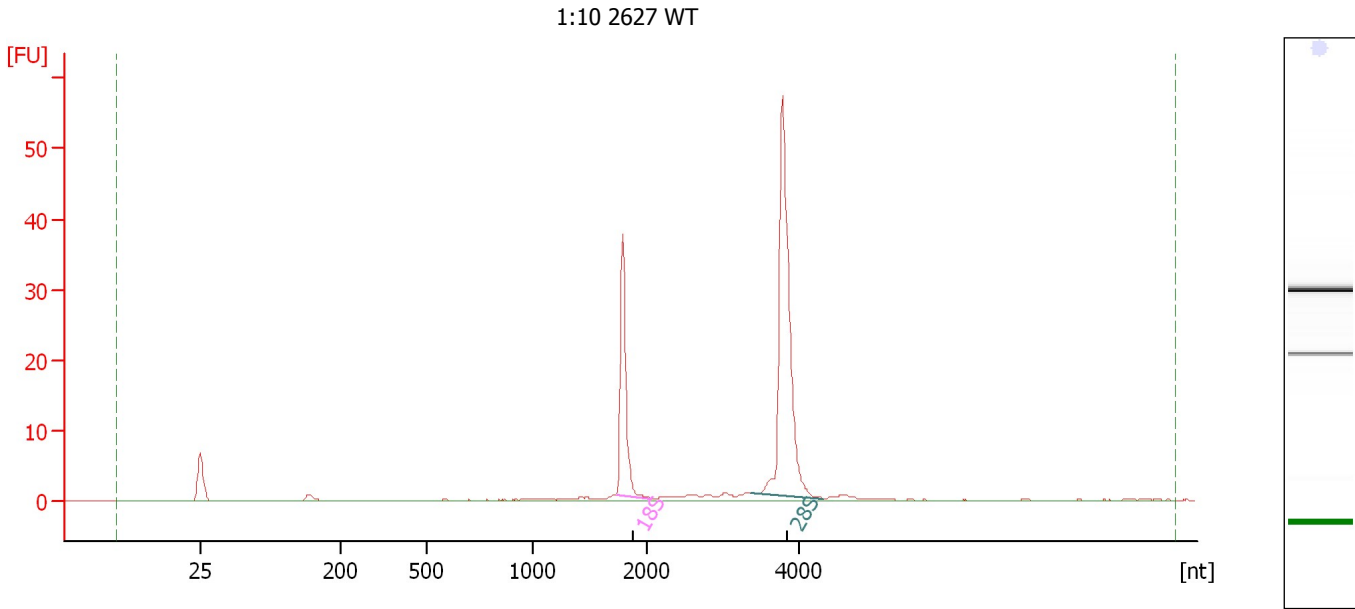
Fragment table for sample 8 : 1:10 AC1 BDNF

Name	Start Size [nt]	End Size [nt]	Area	% of total Area
18S	1,718	2,069	44.9	25.1
28S	3,466	4,299	103.4	57.9

Assay Class: Eukaryote Total RNA Nano
Data Path: C:\...ents and Settings\Bioanalyzer\2012-07-19\2012-07-19_001.xad

Created: 7/19/2012 9:32:52 AM
Modified: 7/19/2012 9:56:44 AM

Electropherogram Summary Continued ...



Overall Results for sample 9 : 1:10 2627 WT

RNA Area: 109.0 RNA Integrity Number (RIN): 10 (B.02.08)
RNA Concentration: 83 ng/μl Result Flagging Color:
rRNA Ratio [28s / 18s]: 2.3 Result Flagging Label: RIN:10

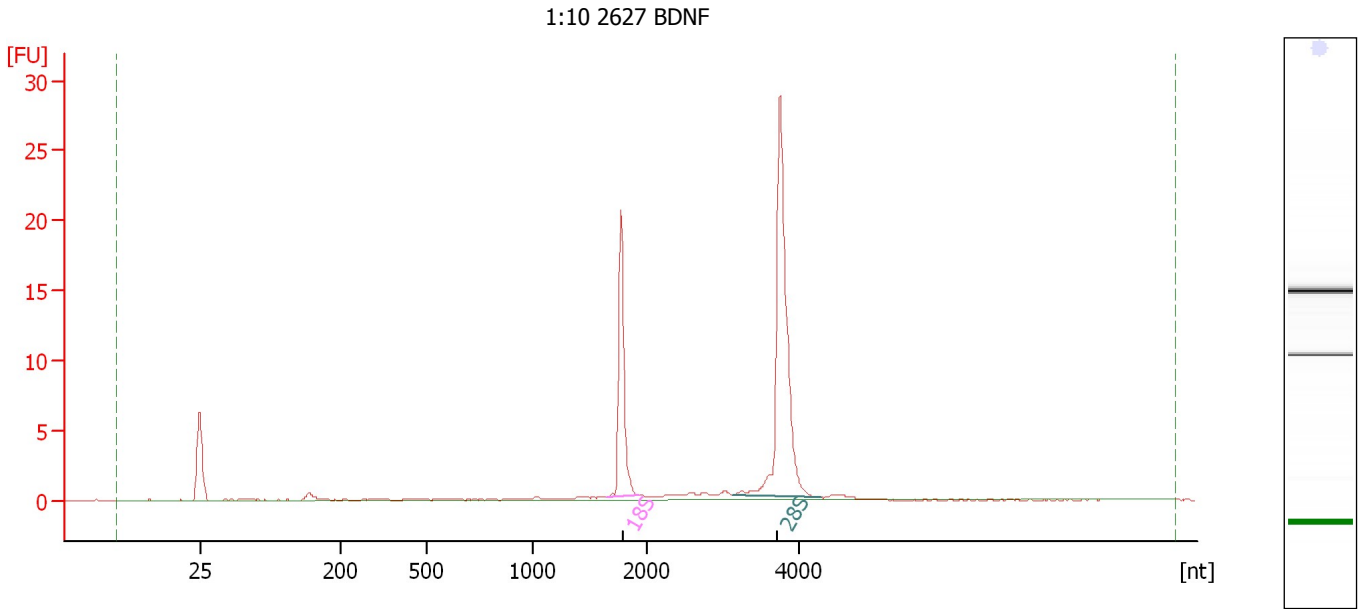
Fragment table for sample 9 : 1:10 2627 WT

Name	Start Size [nt]	End Size [nt]	Area	% of total Area
18S	1,724	2,052	26.8	24.6
28S	3,370	4,334	60.5	55.5

Assay Class: Eukaryote Total RNA Nano
Data Path: C:\...ents and Settings\Bioanalyzer\2012-07-19\2012-07-19_001.xad

Created: 7/19/2012 9:32:52 AM
Modified: 7/19/2012 9:56:44 AM

Electropherogram Summary Continued ...



Overall Results for sample 10 : 1:10 2627 BDNF

RNA Area: 55.1 RNA Integrity Number (RIN): 10 (B.02.08)
RNA Concentration: 42 ng/μl Result Flagging Color:
rRNA Ratio [28s / 18s]: 2.2 Result Flagging Label: RIN:10

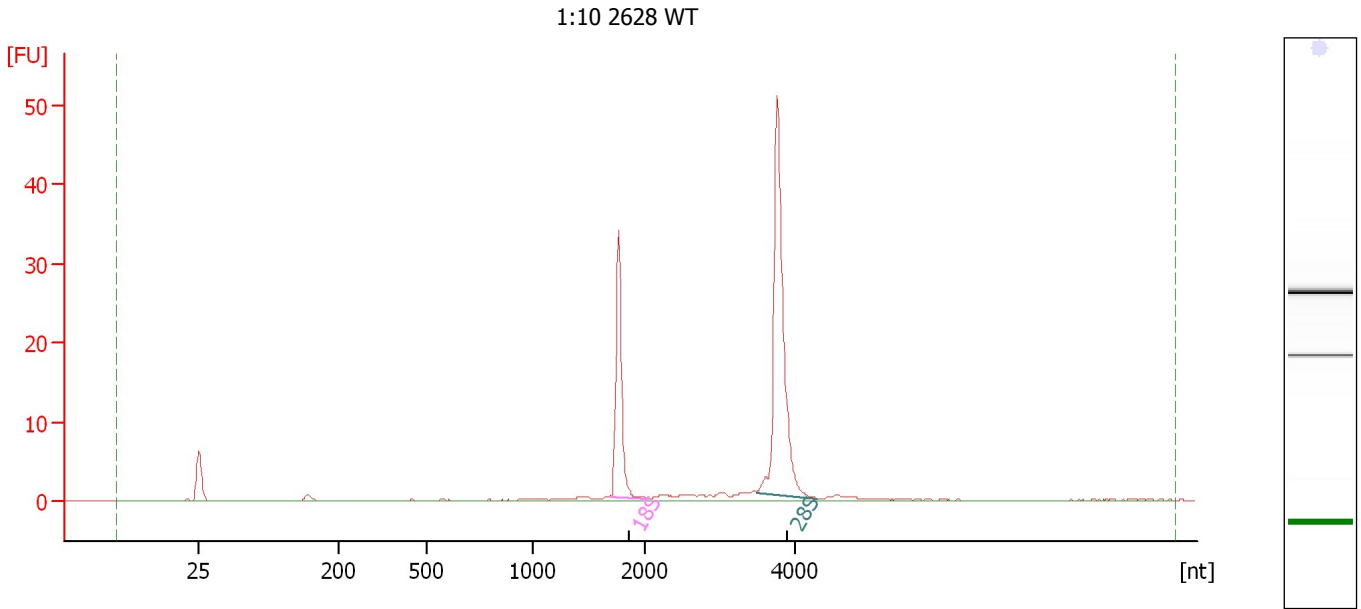
Fragment table for sample 10 : 1:10 2627 BDNF

Name	Start Size [nt]	End Size [nt]	Area	% of total Area
18S	1,648	1,921	14.4	26.1
28S	3,143	4,291	31.1	56.5

Assay Class: Eukaryote Total RNA Nano
Data Path: C:\...ents and Settings\Bioanalyzer\2012-07-19\2012-07-19_001.xad

Created: 7/19/2012 9:32:52 AM
Modified: 7/19/2012 9:56:44 AM

Electropherogram Summary Continued ...



Overall Results for sample 11 : 1:10 2628 WT

RNA Area: 97.0 RNA Integrity Number (RIN): 10 (B.02.08)
RNA Concentration: 74 ng/μl Result Flagging Color:
rRNA Ratio [28s / 18s]: 2.2 Result Flagging Label: RIN:10

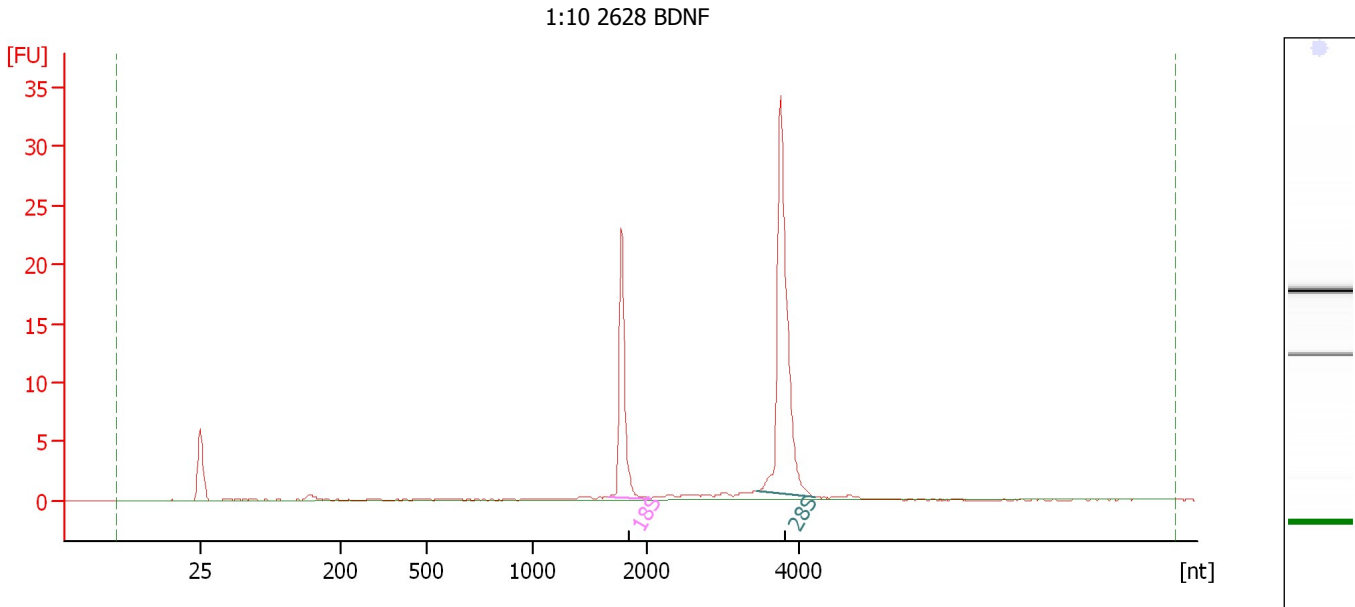
Fragment table for sample 11 : 1:10 2628 WT

Name	Start Size [nt]	End Size [nt]	Area	% of total Area
18S	1,703	2,022	23.9	24.6
28S	3,471	4,295	51.7	53.3

Assay Class: Eukaryote Total RNA Nano
Data Path: C:\...ents and Settings\Bioanalyzer\2012-07-19\2012-07-19_001.xad

Created: 7/19/2012 9:32:52 AM
Modified: 7/19/2012 9:56:44 AM

Electropherogram Summary Continued ...



Overall Results for sample 12 : 1:10 2628 BDNF

RNA Area: 67.2 RNA Integrity Number (RIN): 10 (B.02.08)
RNA Concentration: 51 ng/μl Result Flagging Color:
rRNA Ratio [28s / 18s]: 2.1 Result Flagging Label: RIN:10

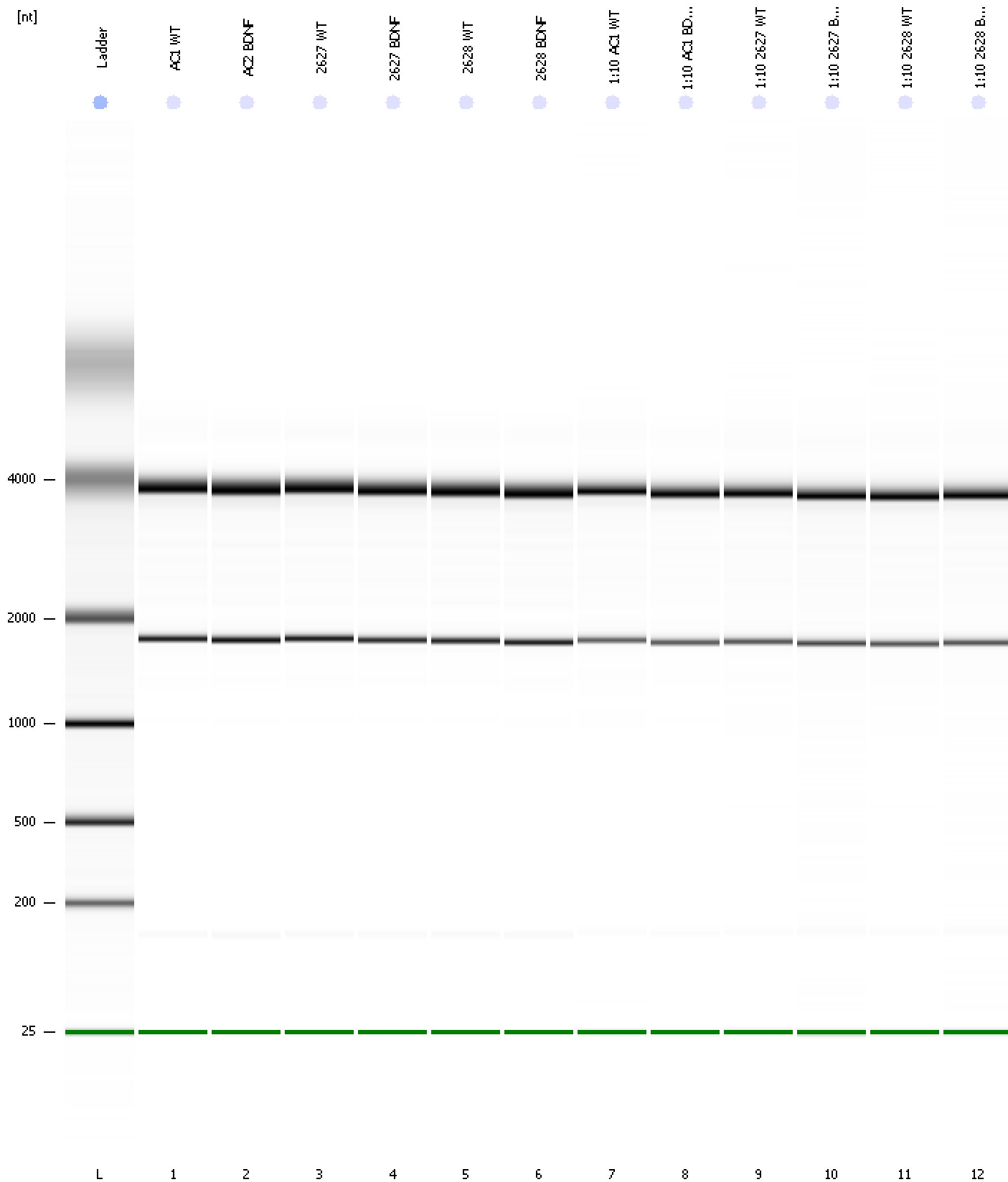
Fragment table for sample 12 : 1:10 2628 BDNF

Name	Start Size [nt]	End Size [nt]	Area	% of total Area
18S	1,658	2,038	16.5	24.6
28S	3,455	4,220	35.0	52.1

Assay Class: Eukaryote Total RNA Nano
Data Path: C:\...ents and Settings\Bioanalyzer\2012-07-19\2012-07-19_001.xad

Created: 7/19/2012 9:32:52 AM
Modified: 7/19/2012 9:56:44 AM

Gel Image



Assay Class: Eukaryote Total RNA Nano
Data Path: C:\...ents and Settings\Bioanalyzer\2012-07-19\2012-07-19_001.xad

Created: 7/19/2012 9:32:52 AM
Modified: 7/19/2012 9:56:44 AM

Curves

Standard Curve

