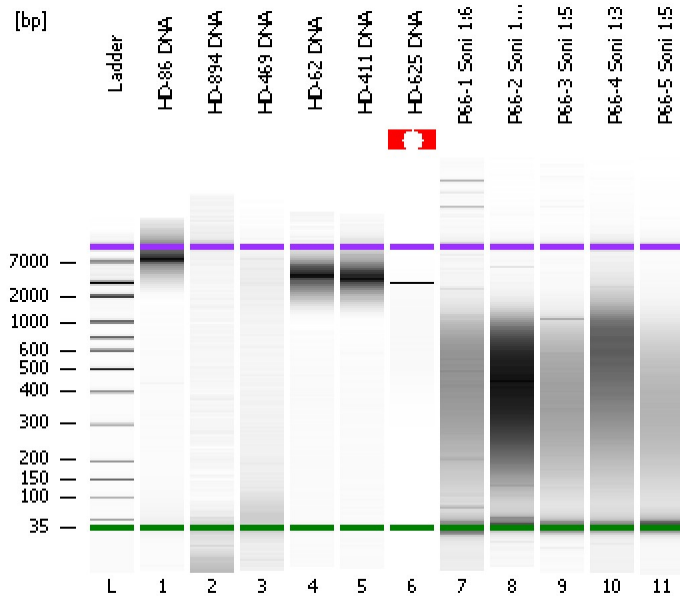


Assay Class: High Sensitivity DNA Assay
Data Path: C:\...ents and Settings\Bioanalyzer\2012-07-19\2012-07-19_003.xad

Created: 7/19/2012 11:31:48 AM
Modified: 7/19/2012 12:16:19 PM

Electrophoresis File Run Summary



Instrument Information:

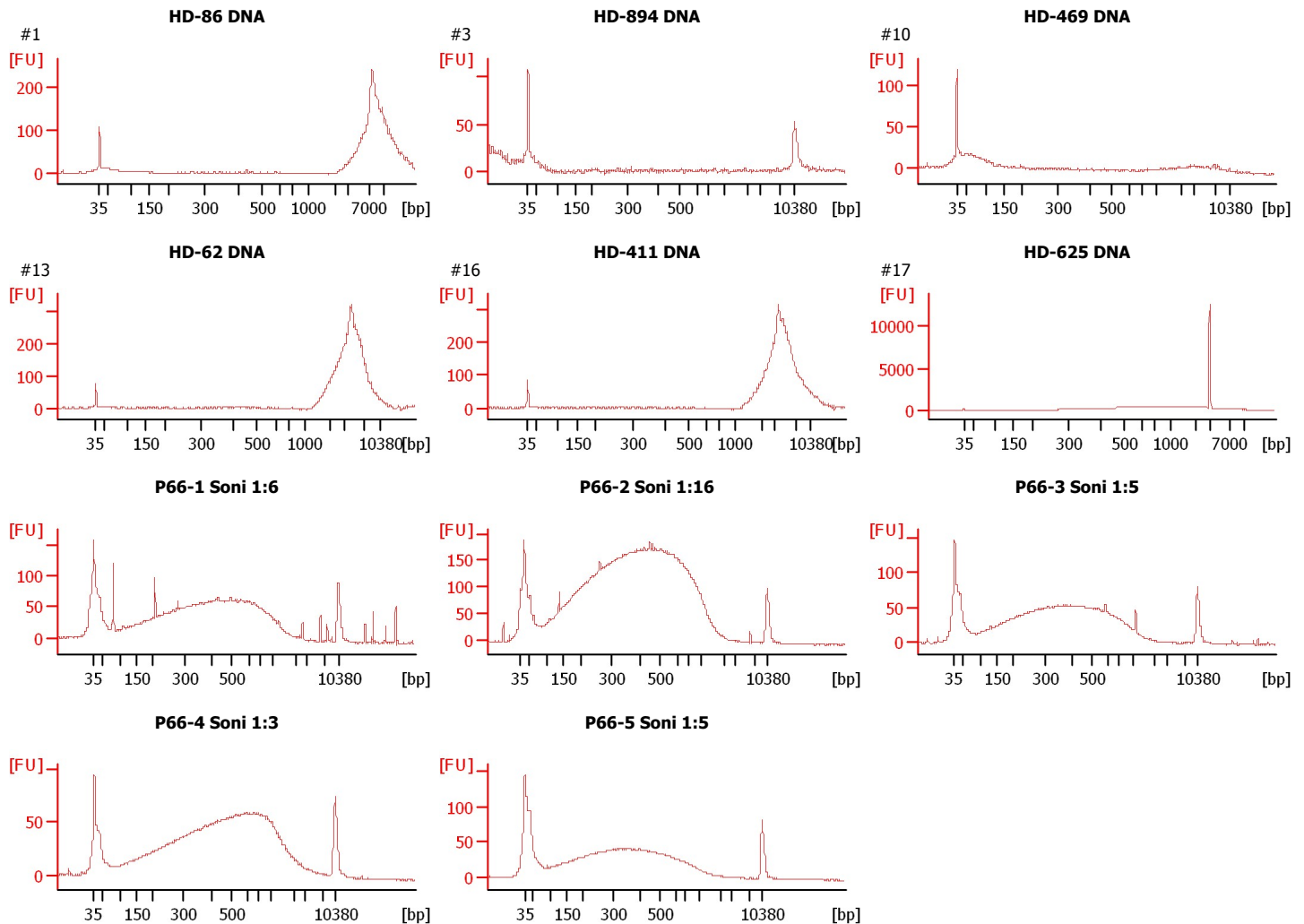
Instrument Name: DE13701086 Firmware: C.01.069
Serial#: DE13701086 Type: G2938B

Assay Information:

Assay Origin Path: C:\Program Files\Agilent\2100 bioanalyzer\2100 expert\assays\dsDNA\High Sensitivity DNA.xsy
Assay Class: High Sensitivity DNA Assay
Version: 1.03
Assay Comments: Copyright © 2003-2010 Agilent Technologies

Chip Information:

Chip Lot #:
Reagent Kit Lot #:
Chip Comments:



Assay Class: High Sensitivity DNA Assay
 Data Path: C:\...ents and Settings\Bioanalyzer\2012-07-19\2012-07-19_003.xad

Created: 7/19/2012 11:31:48 AM
 Modified: 7/19/2012 12:16:19 PM

Electrophoresis File Run Summary (Chip Summary)

Sample Name	Sample Comment	Rest. Digest	Status	Observation	Result Label	Result Color
HD-86 DNA	#1	<input type="checkbox"/>	✓			
HD-894 DNA	#3	<input type="checkbox"/>	✓			
HD-469 DNA	#10	<input type="checkbox"/>	✓			
HD-62 DNA	#13	<input type="checkbox"/>	✓			
HD-411 DNA	#16	<input type="checkbox"/>	✓			
HD-625 DNA	#17	<input type="checkbox"/>	⚠			
P66-1 Soni 1:6		<input type="checkbox"/>	✓			
P66-2 Soni 1:16		<input type="checkbox"/>	✓			
P66-3 Soni 1:5		<input type="checkbox"/>	✓			
P66-4 Soni 1:3		<input type="checkbox"/>	✓			
P66-5 Soni 1:5		<input type="checkbox"/>	✓			
Ladder		<input type="checkbox"/>	✓			

Chip Lot #

Reagent Kit Lot #

Chip Comments :

Assay Class: High Sensitivity DNA Assay
Data Path: C:\...ents and Settings\Bioanalyzer\2012-07-19\2012-07-19_003.xad

Created: 7/19/2012 11:31:48 AM
Modified: 7/19/2012 12:16:19 PM

Electrophoresis Assay Details

General Analysis Settings

Number of Available Sample and Ladder Wells (Max.) : 12
Minimum Visible Range [s] : 32
Maximum Visible Range [s] : 138
Start Analysis Time Range [s] : 33
End Analysis Time Range [s] : 137.5
Ladder Concentration [pg/μl] : 1950
Uses Standard Area for Ladder Fragments
Lower Marker Concentration [pg/μl] : 125
Upper Marker Concentration [pg/μl] : 75
Used Upper Marker for Quantitation
Standard Curve Fit is Point to Point
Show Data Aligned to Lower and Upper Marker

Integrator Settings

Integration Start Time [s] : 33.05
Integration End Time [s] : 137
Slope Threshold : 0.8
Height Threshold [FU] : 5
Area Threshold : 0.1
Width Threshold [s] : 0.6
Baseline Plateau [s] : 0.5

Filter Settings

Filter Width [s] : 0.5
Polynomial Order : 4

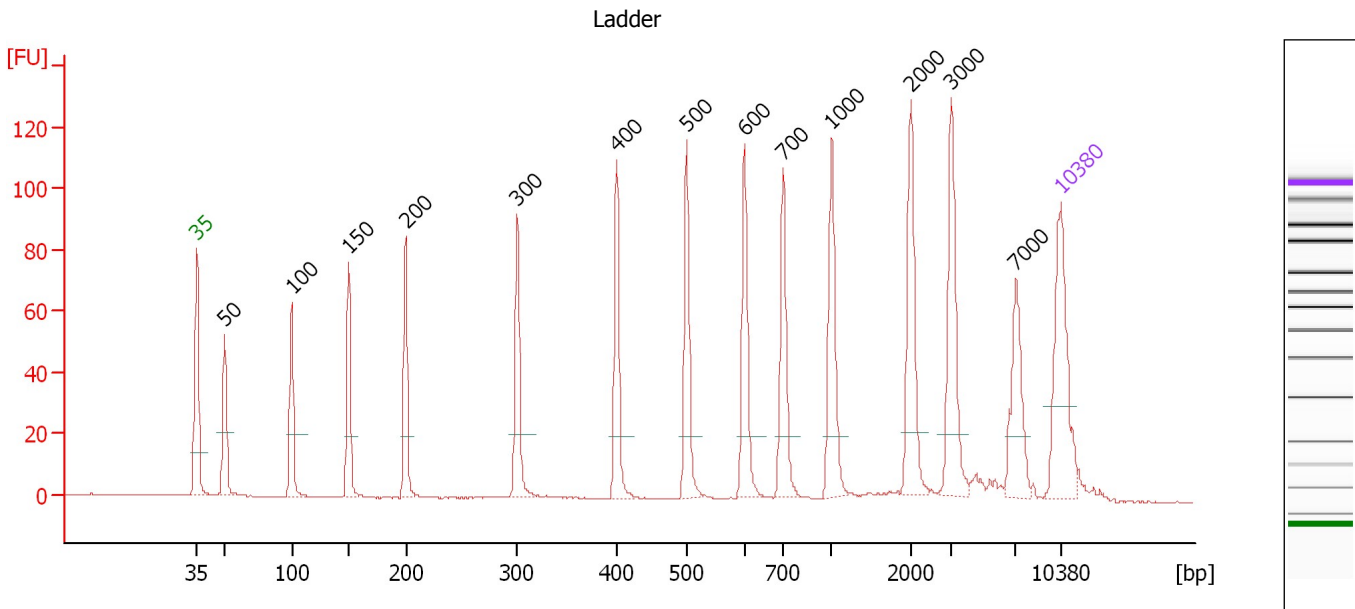
Ladder

Ladder Peak	Size	Area
1	35	160
2	50	210
3	100	208
4	150	221
5	200	242
6	300	270
7	400	305
8	500	306
9	600	336
10	700	321
11	1000	366
12	2000	413
13	3000	411
14	7000	400
15	10380	214

Assay Class: High Sensitivity DNA Assay
 Data Path: C:\...ents and Settings\Bioanalyzer\2012-07-19\2012-07-19_003.xad

Created: 7/19/2012 11:31:48 AM
 Modified: 7/19/2012 12:16:19 PM

Electropherogram Summary



Overall Results for Ladder

Noise: 0.1

Peak table for Ladder

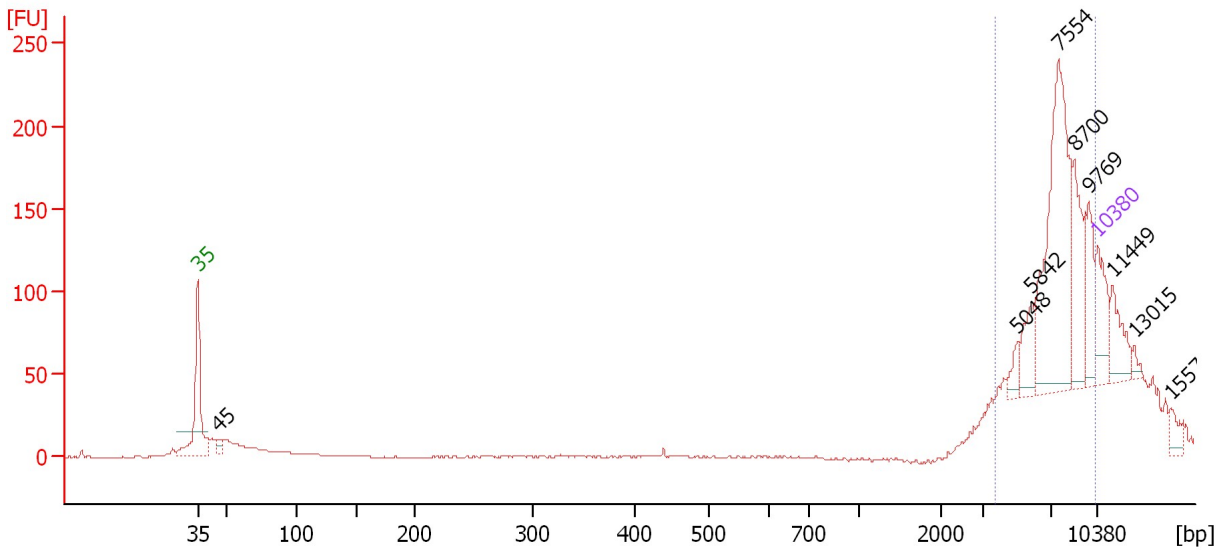
Peak	Size [bp]	Conc. [pg/μl]	Molarity [pmol/l]	Observations
1	35	125.00	5,411.3	Lower Marker
2	50	150.00	4,545.5	Ladder Peak
3	100	150.00	2,272.7	Ladder Peak
4	150	150.00	1,515.2	Ladder Peak
5	200	150.00	1,136.4	Ladder Peak
6	300	150.00	757.6	Ladder Peak
7	400	150.00	568.2	Ladder Peak
8	500	150.00	454.5	Ladder Peak
9	600	150.00	378.8	Ladder Peak
10	700	150.00	324.7	Ladder Peak
11	1,000	150.00	227.3	Ladder Peak
12	2,000	150.00	113.6	Ladder Peak
13	3,000	150.00	75.8	Ladder Peak
14	7,000	150.00	32.5	Ladder Peak
15	10,380	75.00	10.9	Upper Marker

Assay Class: High Sensitivity DNA Assay
 Data Path: C:\...ents and Settings\Bioanalyzer\2012-07-19\2012-07-19_003.xad

Created: 7/19/2012 11:31:48 AM
 Modified: 7/19/2012 12:16:19 PM

Electropherogram Summary Continued ...

HD-86 DNA [#1]



Overall Results for sample 1 : HD-86 DNA

Number of peaks found: 9 Corr. Area 1: 839.2
 Noise: 0.2

Peak table for sample 1 : HD-86 DNA

Peak	Size [bp]	Conc. [pg/μl]	Molarity [pmol/l]	Observations
1	35	125.00	5,411.3	Lower Marker
2	45	29.42	983.4	
3	5,048	28.15	8.4	
4	5,842	59.05	15.3	
5	7,554	421.63	84.6	
6	8,700	124.37	21.7	
7	9,769	78.87	12.2	
8	10,380	75.00	10.9	Upper Marker
9	11,449	0.00	0.0	
10	13,015	0.00	0.0	
11	15,573	0.00	0.0	

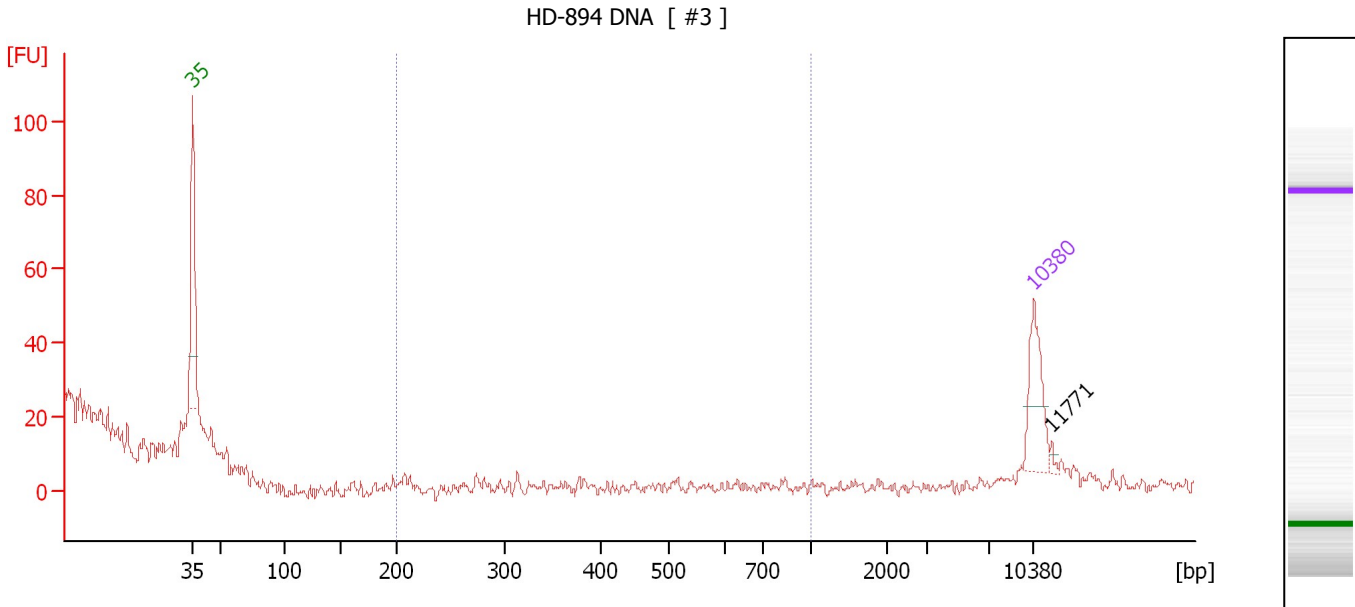
Region table for sample 1 : HD-86 DNA

From [bp]	To [bp]	Average Size [bp]	Molarity [pmol/l]	Conc. [pg/μl]	Corr. Area	% of Total	Size distribution in CV [%]	Color
3,743	10,187	7,521	197.9	947.48	839.2	72	20.5	Blue

Assay Class: High Sensitivity DNA Assay
 Data Path: C:\...ents and Settings\Bioanalyzer\2012-07-19\2012-07-19_003.xad

Created: 7/19/2012 11:31:48 AM
 Modified: 7/19/2012 12:16:19 PM

Electropherogram Summary Continued ...



Overall Results for sample 2 : HD-894 DNA

Number of peaks found: 1 Corr. Area 1: 0.0
 Noise: 1.6

Peak table for sample 2 : HD-894 DNA

Peak	Size [bp]	Conc. [pg/μl]	Molarity [pmol/l]	Observations
1	35	125.00	5,411.3	Lower Marker
2	10,380	75.00	10.9	Upper Marker
3	11,771	0.00	0.0	

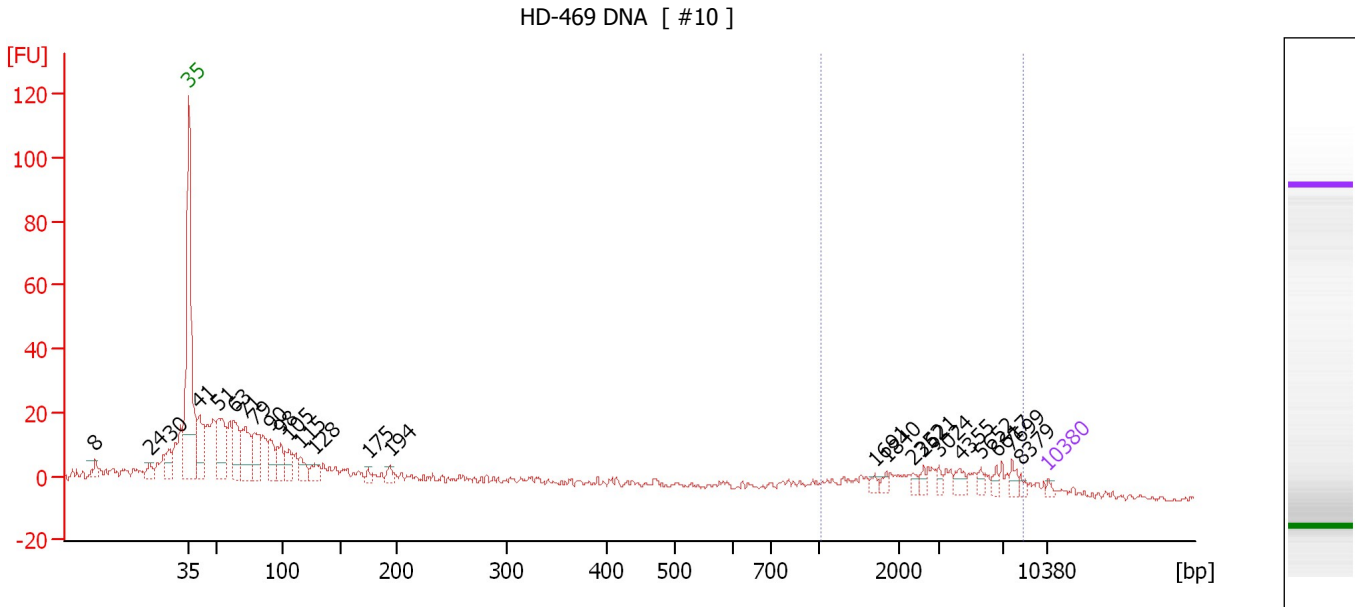
Region table for sample 2 : HD-894 DNA

From [bp]	To [bp]	Average Size [bp]	Molarity [pmol/l]	Conc. [pg/μl]	Corr. Area	% of Total	Size distribution in CV [%]	Color
200	1,000	0	0.0	0.00	0.0	0	0.0	Blue

Assay Class: High Sensitivity DNA Assay
 Data Path: C:\...ents and Settings\Bioanalyzer\2012-07-19\2012-07-19_003.xad

Created: 7/19/2012 11:31:48 AM
 Modified: 7/19/2012 12:16:19 PM

Electropherogram Summary Continued ...



Overall Results for sample 3 : HD-469 DNA

Number of peaks found: 25 Corr. Area 1: 100.9
 Noise: 0.8

Peak table for sample 3 : HD-469 DNA

Peak	Size [bp]	Conc. [pg/μl]	Molarity [pmol/l]	Observations
1	8	0.00	0.0	
2	24	0.00	0.0	
3	30	0.00	0.0	
4	35	125.00	5,411.3	Lower Marker
5	41	1,760.20	65,534.8	
6	51	2,316.03	68,352.3	
7	63	1,575.29	37,879.0	
8	71	2,055.03	43,570.4	
9	79	1,455.53	28,019.4	
10	90	1,000.14	16,841.7	
11	98	1,045.70	16,162.8	
12	105	738.48	10,634.1	
13	115	605.61	7,972.6	
14	128	563.57	6,657.6	
15	175	184.94	1,598.7	
16	194	278.13	2,171.3	
17	1,691	141.77	127.0	
18	1,840	135.81	111.8	
19	2,352	156.37	100.7	
20	2,621	130.03	75.2	
21	3,024	137.09	68.7	
22	4,355	239.45	83.3	
23	5,652	134.18	36.0	
24	6,617	147.44	33.8	
25	7,699	217.46	42.8	
26	8,379	98.84	17.9	

Assay Class: High Sensitivity DNA Assay
Data Path: C:\...ents and Settings\Bioanalyzer\2012-07-19\2012-07-19_003.xad

Created: 7/19/2012 11:31:48 AM
Modified: 7/19/2012 12:16:19 PM

Electropherogram Summary Continued ...**... Peak table for sample 3 : HD-469 DNA**

Peak	Size [bp]	Conc. [pg/ μ l]	Molarity [pmol/l]	Observations
27	10,380	75.00	10.9	Upper Marker

Region table for sample 3 : HD-469 DNA

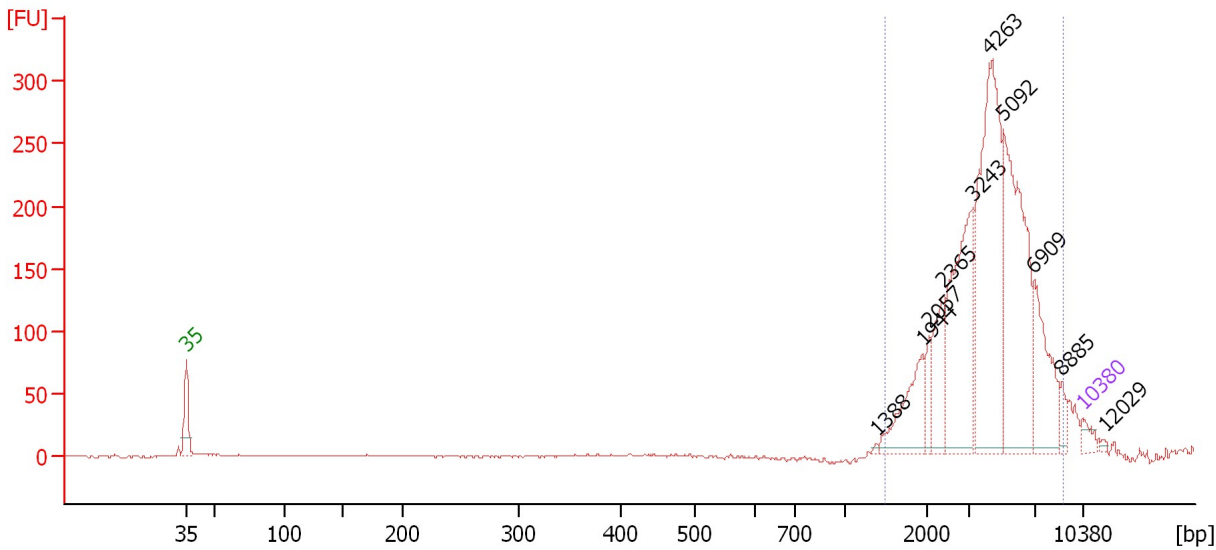
From [bp]	To [bp]	Average Size [bp]	Molarity [pmol/l]	Conc. [pg/ μ l]	Corr. Area	% of Total	Size distribution in CV [%]	Color
1,019	8,616	3,854	1,817.9	3,268.27	100.9	16	57.2	

Assay Class: High Sensitivity DNA Assay
 Data Path: C:\...ents and Settings\Bioanalyzer\2012-07-19\2012-07-19_003.xad

Created: 7/19/2012 11:31:48 AM
 Modified: 7/19/2012 12:16:19 PM

Electropherogram Summary Continued ...

HD-62 DNA [#13]



Overall Results for sample 4 : HD-62 DNA

Number of peaks found: 10 Corr. Area 1: 1,973.0
 Noise: 0.5

Peak table for sample 4 : HD-62 DNA

Peak	Size [bp]	Conc. [pg/μl]	Molarity [pmol/l]	Observations
1	35	125.00	5,411.3	Lower Marker
2	1,388	12.75	13.9	
3	1,944	488.34	380.5	
4	2,057	157.84	116.3	
5	2,365	383.65	245.8	
6	3,243	1,109.00	518.1	
7	4,263	1,841.51	654.5	
8	5,092	1,585.81	471.9	
9	6,909	591.47	129.7	
10	8,885	79.22	13.5	
11	10,380	75.00	10.9	Upper Marker
12	12,029	0.00	0.0	

Region table for sample 4 : HD-62 DNA

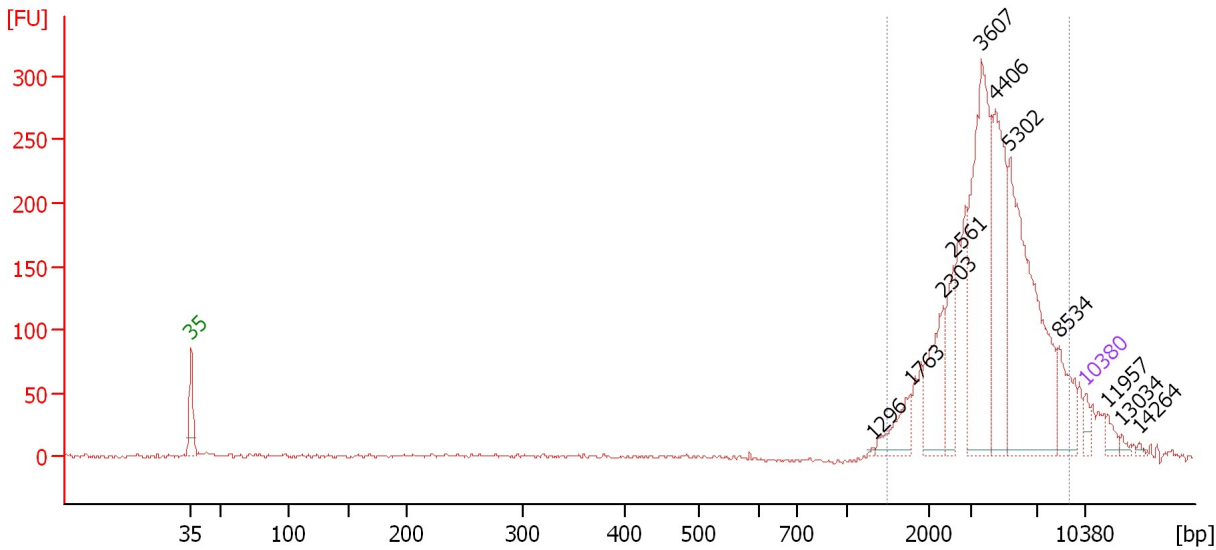
From [bp]	To [bp]	Average Size [bp]	Molarity [pmol/l]	Conc. [pg/μl]	Corr. Area	% of Total	Size distribution in CV [%]	Color
1,497	9,020	4,409	2,546.8	6,267.62	1,973.0	96	40.9	Blue

Assay Class: High Sensitivity DNA Assay
 Data Path: C:\...ents and Settings\Bioanalyzer\2012-07-19\2012-07-19_003.xad

Created: 7/19/2012 11:31:48 AM
 Modified: 7/19/2012 12:16:19 PM

Electropherogram Summary Continued ...

HD-411 DNA [#16]



Overall Results for sample 5 : HD-411 DNA

Number of peaks found: 11 Corr. Area 1: 2,014.3
 Noise: 1.4

Peak table for sample 5 : HD-411 DNA

Peak	Size [bp]	Conc. [pg/μl]	Molarity [pmol/l]	Observations
1	35	125.00	5,411.3	Lower Marker
2	1,296	9.78	11.4	
3	1,763	264.53	227.3	
4	2,303	516.46	339.7	
5	2,561	311.17	184.1	
6	3,607	1,585.60	666.0	
7	4,406	1,028.84	353.8	
8	5,302	1,777.46	508.0	
9	8,534	343.73	61.0	
10	10,380	75.00	10.9	Upper Marker
11	11,957	0.00	0.0	
12	13,034	0.00	0.0	
13	14,264	0.00	0.0	

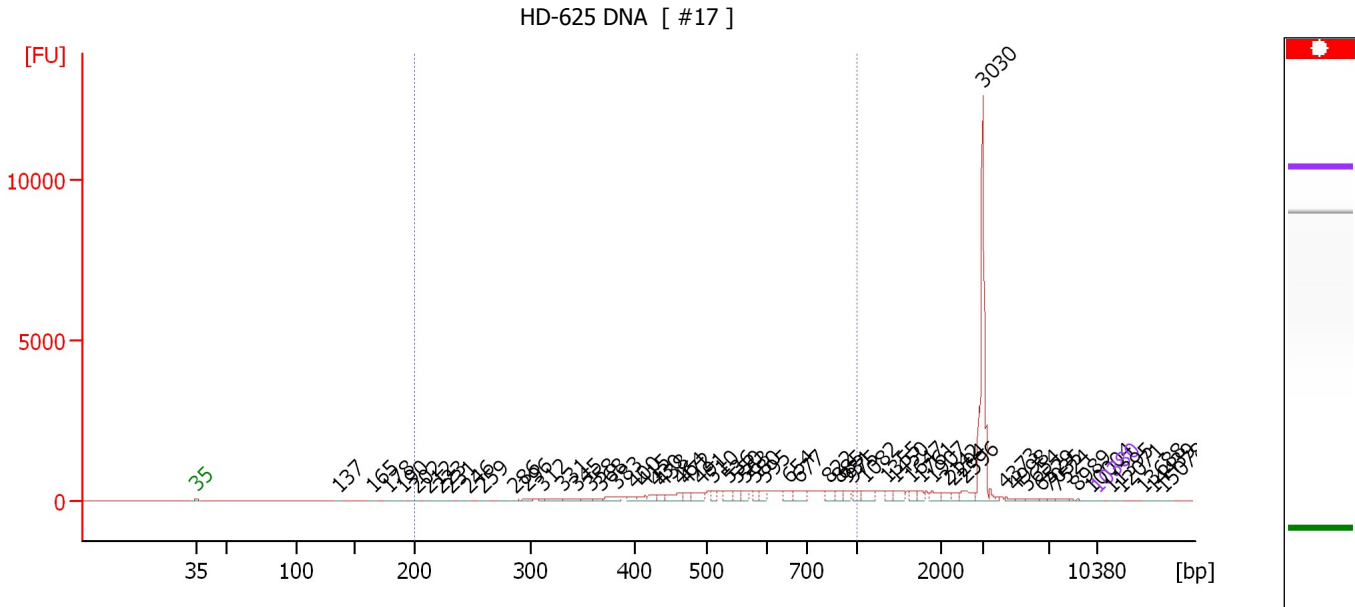
Region table for sample 5 : HD-411 DNA

From [bp]	To [bp]	Average Size [bp]	Molarity [pmol/l]	Conc. [pg/μl]	Corr. Area	% of Total	Size distribution in CV [%]	Color
1,482	9,222	4,368	2,672.6	6,474.39	2,014.3	90	42.8	Blue

Assay Class: High Sensitivity DNA Assay
 Data Path: C:\...ents and Settings\Bioanalyzer\2012-07-19\2012-07-19_003.xad

Created: 7/19/2012 11:31:48 AM
 Modified: 7/19/2012 12:16:19 PM

Electropherogram Summary Continued ...



Overall Results for sample 6 : HD-625 DNA

Number of peaks found: 60 Corr. Area 1: 7,761.9
 Noise: 1.6

Peak table for sample 6 : HD-625 DNA

Peak	Size [bp]	Conc. [pg/μl]	Molarity [pmol/l]	Observations
1	35	125.00	5,411.3	Lower Marker
2	137	65.42	726.1	
3	165	70.79	650.9	
4	178	104.77	891.7	
5	190	149.27	1,190.6	
6	202	143.43	1,076.3	
7	212	118.68	848.9	
8	223	253.11	1,722.6	
9	231	203.92	1,339.1	
10	246	345.03	2,124.8	
11	259	332.49	1,947.9	
12	286	680.81	3,605.7	
13	296	672.27	3,441.3	
14	312	458.41	2,228.1	
15	331	1,129.67	5,178.3	
16	345	1,243.20	5,463.6	
17	358	1,218.88	5,159.0	
18	368	932.41	3,842.8	
19	383	2,051.92	8,109.2	
20	400	1,390.31	5,271.0	
21	415	1,472.84	5,381.8	
22	430	1,780.38	6,276.3	
23	438	1,300.86	4,495.3	
24	464	3,522.68	11,510.1	
25	472	1,648.06	5,286.2	
26	491	3,276.43	10,107.8	

Assay Class: High Sensitivity DNA Assay
 Data Path: C:\...ents and Settings\Bioanalyzer\2012-07-19\2012-07-19_003.xad


Created: 7/19/2012 11:31:48 AM
 Modified: 7/19/2012 12:16:19 PM

Electropherogram Summary Continued ...

... Peak table for sample 6 : HD-625 DNA

Peak	Size [bp]	Conc. [pg/µl]	Molarity [pmol/l]	Observations
27	510	1,751.46	5,201.8	
28	536	2,401.86	6,787.4	
29	550	2,284.91	6,294.0	
30	563	1,756.89	4,727.7	
31	580	1,724.78	4,502.7	
32	595	1,838.56	4,680.8	
33	654	2,797.24	6,477.2	
34	677	3,185.96	7,134.0	
35	822	2,066.38	3,808.0	
36	885	1,744.04	2,987.5	
37	931	1,933.06	3,145.1	
38	975	1,999.69	3,107.9	
39	1,082	2,563.18	3,589.1	
40	1,355	1,346.56	1,505.9	
41	1,450	2,191.66	2,290.2	
42	1,647	1,288.25	1,185.4	
43	1,761	1,084.86	933.5	
44	1,907	1,762.38	1,400.5	
45	2,142	1,165.37	824.2	
46	2,294	1,154.23	762.5	
47	2,596	2,429.08	1,417.7	
48	3,030	27,742.23	13,874.5	
49	4,373	498.76	172.8	
50	4,998	401.47	121.7	
51	5,654	466.63	125.0	
52	6,529	222.76	51.7	
53	7,035	158.63	34.2	
54	7,524	358.97	72.3	
55	8,989	170.18	28.7	
56	10,004	122.79	18.6	
57	10,380	75.00	10.9	Upper Marker
58	11,395	0.00	0.0	
59	12,071	0.00	0.0	
60	13,688	0.00	0.0	
61	14,439	0.00	0.0	
62	15,078	0.00	0.0	

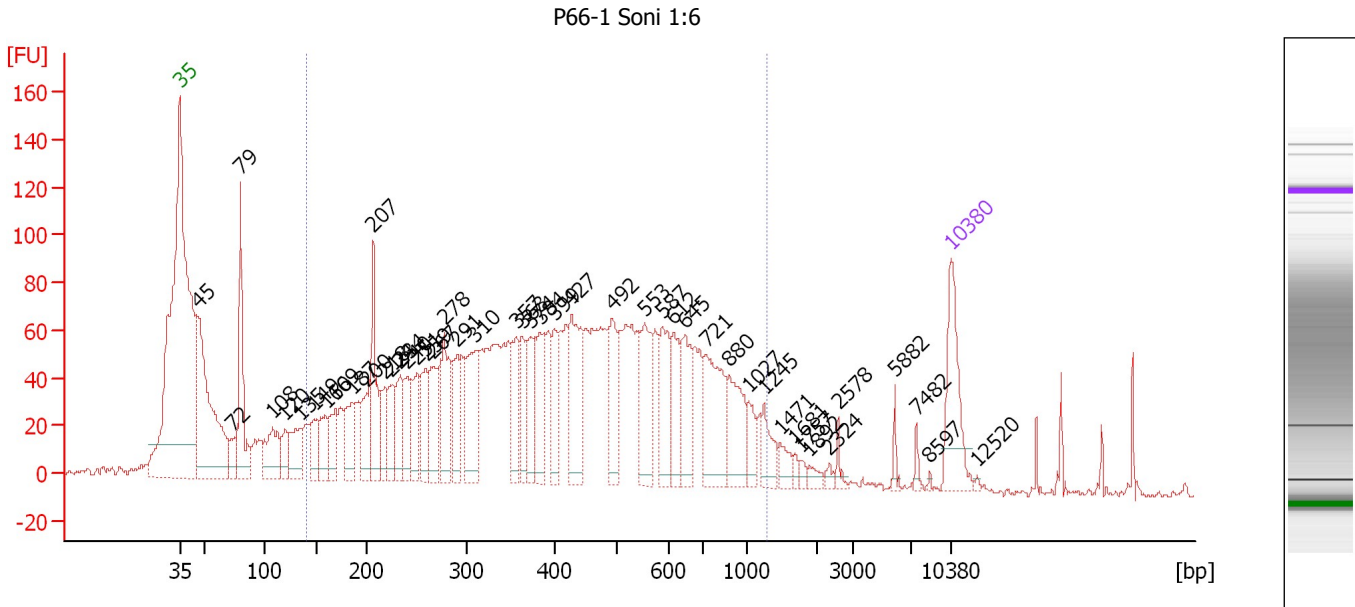
Region table for sample 6 : HD-625 DNA

From [bp]	To [bp]	Average Size [bp]	Molarity [pmol/l]	Conc. [pg/µl]	Corr. Area	% of Total	Size distribution in CV [%]	Color
200	1,000	582	191,226.8	63,499.11	7,761.9	49	30.4	

Assay Class: High Sensitivity DNA Assay
 Data Path: C:\...ents and Settings\Bioanalyzer\2012-07-19\2012-07-19_003.xad

Created: 7/19/2012 11:31:48 AM
 Modified: 7/19/2012 12:16:19 PM

Electropherogram Summary Continued ...



Overall Results for sample 7 : P66-1 Soni 1:6

Number of peaks found: 47 Corr. Area 1: 2,915.7
 Noise: 1.8

Peak table for sample 7 : P66-1 Soni 1:6

Peak	Size [bp]	Conc. [pg/μl]	Molarity [pmol/l]	Observations
1	35	125.00	5,411.3	Lower Marker
2	45	353.86	11,791.2	
3	72	38.03	797.0	
4	79	150.48	2,869.0	
5	108	86.21	1,209.8	
6	120	39.66	500.7	
7	135	66.73	750.6	
8	149	46.51	473.4	
9	160	56.56	536.1	
10	169	52.19	467.2	
11	187	68.68	557.8	
12	200	59.99	455.2	
13	207	106.71	782.7	
14	218	50.21	348.5	
15	224	51.06	345.9	
16	234	65.02	421.4	
17	240	57.38	362.8	
18	251	60.79	367.1	
19	259	62.10	362.7	
20	267	75.76	430.1	
21	278	96.66	526.6	
22	291	69.44	361.7	
23	310	107.75	527.3	
24	357	64.19	272.7	
25	363	55.08	229.7	
26	374	66.61	270.2	

Assay Class: High Sensitivity DNA Assay
 Data Path: C:\...ents and Settings\Bioanalyzer\2012-07-19\2012-07-19_003.xad


Created: 7/19/2012 11:31:48 AM
 Modified: 7/19/2012 12:16:19 PM

Electropherogram Summary Continued ...

... Peak table for sample 7 : P66-1 Soni 1:6

Peak	Size [bp]	Conc. [pg/µl]	Molarity [pmol/l]	Observations
27	384	75.02	295.7	
28	399	53.91	204.8	
29	427	118.18	419.8	
30	492	72.67	224.0	
31	553	86.53	237.2	
32	587	74.29	191.9	
33	612	57.72	142.8	
34	645	69.01	162.1	
35	721	112.23	235.8	
36	880	74.36	128.0	
37	1,027	24.58	36.3	
38	1,245	34.13	41.5	
39	1,471	16.79	17.3	
40	1,681	6.56	5.9	
41	1,757	5.71	4.9	
42	1,892	8.96	7.2	
43	2,324	5.65	3.7	
44	2,578	8.03	4.7	
45	5,882	7.85	2.0	
46	7,482	6.01	1.2	
47	8,597	1.68	0.3	
48	10,380	75.00	10.9	Upper Marker
49	12,520	0.00	0.0	

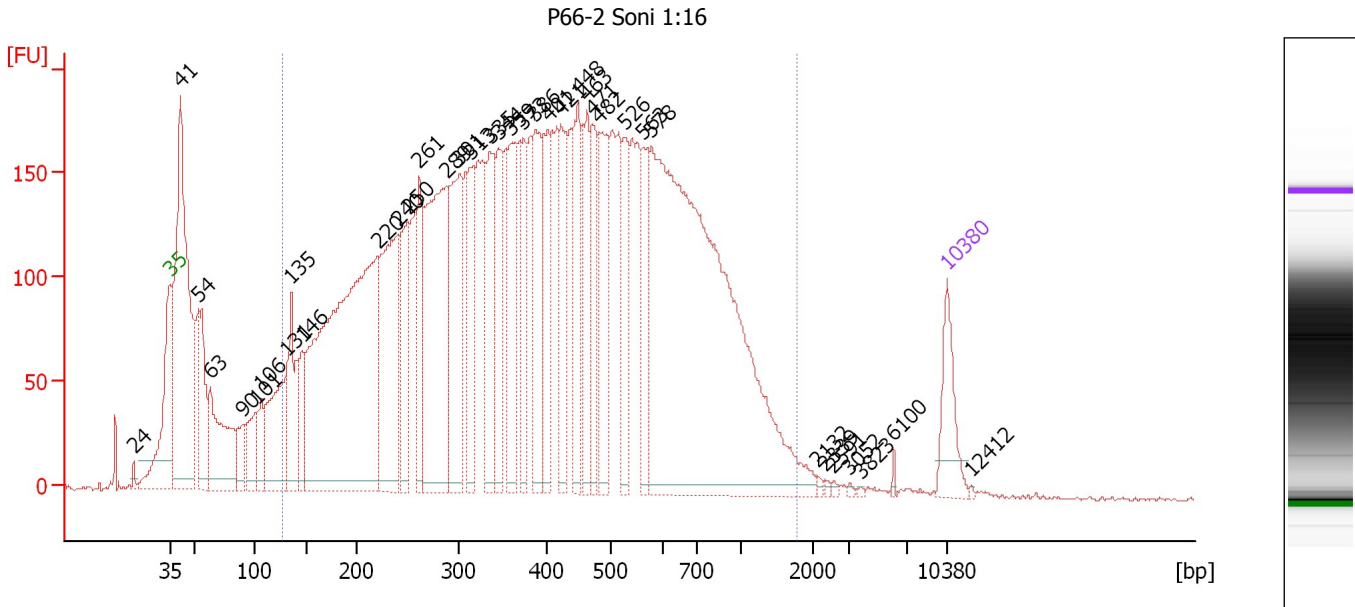
Region table for sample 7 : P66-1 Soni 1:6

From [bp]	To [bp]	Average Size [bp]	Molarity [pmol/l]	Conc. [pg/µl]	Corr. Area	% of Total	Size distribution in CV [%]	Color
141	1,297	452	14,538.4	3,116.46	2,915.7	80	48.4	

Assay Class: High Sensitivity DNA Assay
 Data Path: C:\...ents and Settings\Bioanalyzer\2012-07-19\2012-07-19_003.xad

Created: 7/19/2012 11:31:48 AM
 Modified: 7/19/2012 12:16:19 PM

Electropherogram Summary Continued ...



Overall Results for sample 8 : P66-2 Soni 1:16

Number of peaks found: 38 Corr. Area 1: 8,273.8
 Noise: 1.0

Peak table for sample 8 : P66-2 Soni 1:16

Peak	Size [bp]	Conc. [pg/μl]	Molarity [pmol/l]	Observations
1	24	0.00	0.0	
2	35	125.00	5,411.3	Lower Marker
3	41	841.84	30,892.5	
4	54	172.27	4,861.7	
5	63	248.67	5,978.5	
6	90	71.27	1,198.0	
7	101	102.00	1,523.5	
8	106	69.75	995.9	
9	131	250.77	2,899.5	
10	135	167.43	1,876.5	
11	146	99.76	1,038.3	
12	220	1,149.73	7,911.2	
13	240	393.62	2,487.3	
14	250	183.71	1,114.2	
15	261	162.75	943.1	
16	289	538.26	2,822.2	
17	301	281.15	1,413.8	
18	313	158.83	768.3	
19	335	189.94	858.2	
20	344	166.19	731.3	
21	359	196.42	828.4	
22	373	138.72	563.5	
23	386	190.50	747.5	
24	401	164.30	621.3	
25	421	163.39	588.0	
26	448	174.67	590.6	

Assay Class: High Sensitivity DNA Assay
 Data Path: C:\...ents and Settings\Bioanalyzer\2012-07-19\2012-07-19_003.xad

Created: 7/19/2012 11:31:48 AM
 Modified: 7/19/2012 12:16:19 PM

Electropherogram Summary Continued ...

... Peak table for sample 8 : P66-2 Soni 1:16

Peak	Size [bp]	Conc. [pg/μl]	Molarity [pmol/l]	Observations
27	463	161.13	527.8	
28	471	128.35	412.9	
29	482	192.72	605.7	
30	526	134.59	387.4	
31	563	107.85	290.2	
32	578	1,379.58	3,614.3	
33	2,132	3.87	2.8	
34	2,339	3.15	2.0	
35	2,591	3.08	1.8	
36	3,052	2.51	1.2	
37	3,823	1.73	0.7	
38	6,100	3.49	0.9	
39	10,380	75.00	10.9	Upper Marker
40	12,412	0.00	0.0	

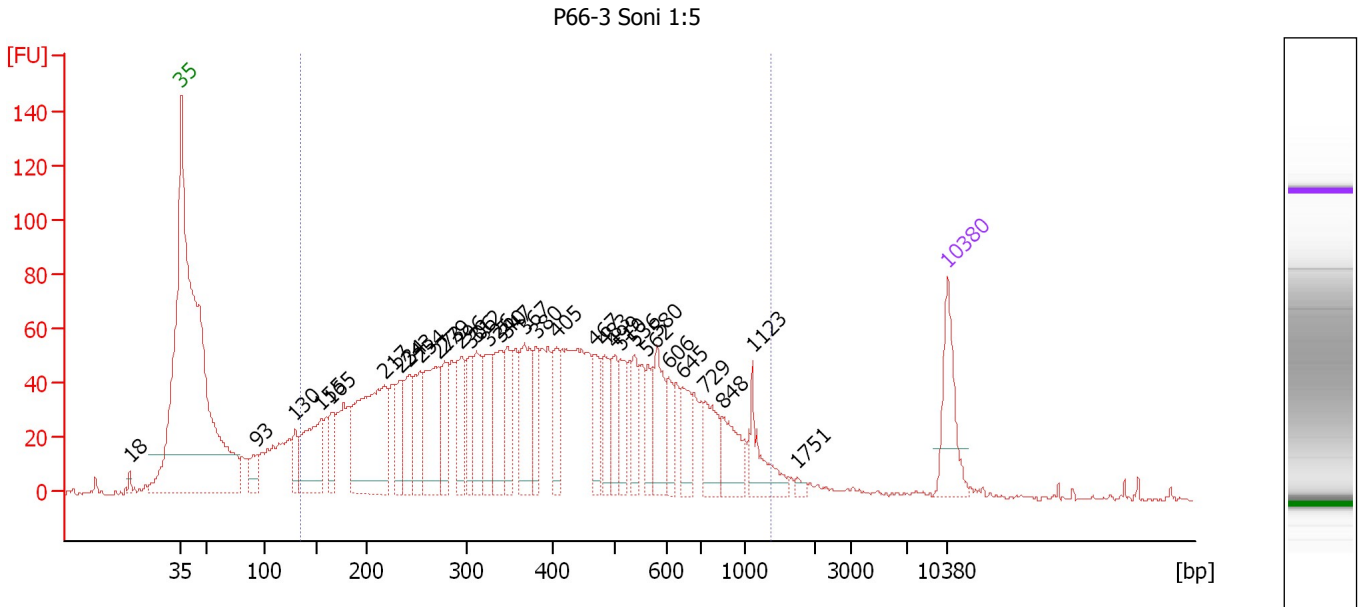
Region table for sample 8 : P66-2 Soni 1:16

From [bp]	To [bp]	Average Size [bp]	Molarity [pmol/l]	Conc. [pg/μl]	Corr. Area	% of Total	Size distribution in CV [%]	Color
126	1,781	453	39,897.4	8,173.69	8,273.8	85	55.2	■

Assay Class: High Sensitivity DNA Assay
 Data Path: C:\...ents and Settings\Bioanalyzer\2012-07-19\2012-07-19_003.xad

Created: 7/19/2012 11:31:48 AM
 Modified: 7/19/2012 12:16:19 PM

Electropherogram Summary Continued ...



Overall Results for sample 9 : P66-3 Soni 1:5

Number of peaks found: 33 Corr. Area 1: 2,456.5
 Noise: 0.9

Peak table for sample 9 : P66-3 Soni 1:5

Peak	Size [bp]	Conc. [pg/μl]	Molarity [pmol/l]	Observations
1	18	0.00	0.0	
2	35	125.00	5,411.3	Lower Marker
3	93	43.45	705.4	
4	130	47.88	559.6	
5	155	162.69	1,585.7	
6	165	54.23	496.6	
7	217	302.11	2,105.0	
8	234	61.84	401.1	
9	243	92.35	575.2	
10	254	87.29	520.8	
11	273	163.99	910.9	
12	279	69.68	378.8	
13	296	83.66	428.4	
14	306	68.13	337.7	
15	312	78.57	381.2	
16	326	80.50	373.8	
17	340	93.52	417.2	
18	347	70.23	306.7	
19	367	112.44	464.3	
20	380	56.93	227.2	
21	405	66.25	248.0	
22	467	56.64	183.9	
23	483	55.58	174.3	
24	499	54.64	165.8	
25	510	49.35	146.7	
26	536	54.23	153.4	

Assay Class: High Sensitivity DNA Assay
 Data Path: C:\...ents and Settings\Bioanalyzer\2012-07-19\2012-07-19_003.xad


Created: 7/19/2012 11:31:48 AM
 Modified: 7/19/2012 12:16:19 PM

Electropherogram Summary Continued ...

... Peak table for sample 9 : P66-3 Soni 1:5

Peak	Size [bp]	Conc. [pg/μl]	Molarity [pmol/l]	Observations
27	562	43.19	116.3	
28	580	69.85	182.5	
29	606	36.78	92.0	
30	645	53.50	125.7	
31	729	63.13	131.2	
32	848	64.98	116.1	
33	1,123	56.48	76.2	
34	1,751	6.16	5.3	
35	10,380	75.00	10.9	Upper Marker

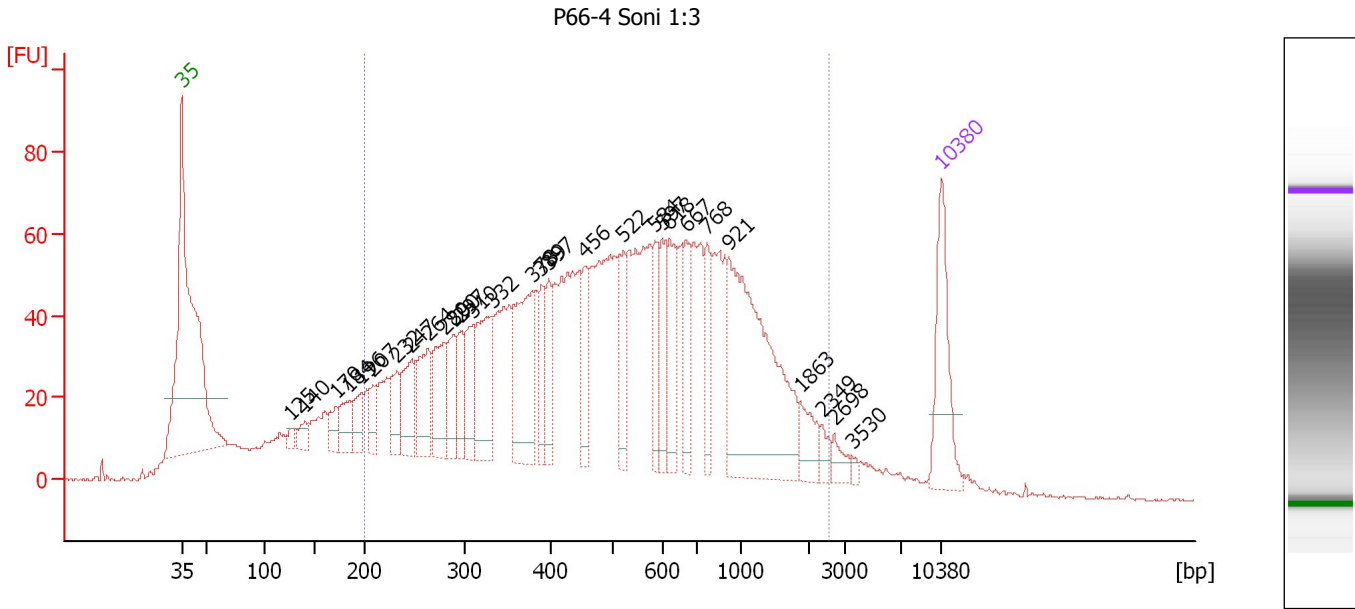
Region table for sample 9 : P66-3 Soni 1:5

From [bp]	To [bp]	Average Size [bp]	Molarity [pmol/l]	Conc. [pg/μl]	Corr. Area	% of Total	Size distribution in CV [%]	Color
135	1,389	425	16,058.0	3,224.84	2,456.5	91	50.5	

Assay Class: High Sensitivity DNA Assay
 Data Path: C:\...ents and Settings\Bioanalyzer\2012-07-19\2012-07-19_003.xad

Created: 7/19/2012 11:31:48 AM
 Modified: 7/19/2012 12:16:19 PM

Electropherogram Summary Continued ...



Overall Results for sample 10 : P66-4 Soni 1:3

Number of peaks found: 29 Corr. Area 1: 2,337.4
 Noise: 0.5

Peak table for sample 10 : P66-4 Soni 1:3

Peak	Size [bp]	Conc. [pg/μl]	Molarity [pmol/l]	Observations
1	35	125.00	5,411.3	Lower Marker
2	125	9.11	110.2	
3	140	19.73	214.2	
4	170	26.90	239.2	
5	184	40.19	331.4	
6	196	35.78	276.7	
7	207	26.49	193.7	
8	232	43.67	285.0	
9	247	66.54	408.5	
10	264	77.57	445.9	
11	280	78.96	426.7	
12	290	50.58	264.1	
13	297	39.85	203.6	
14	310	52.62	257.0	
15	332	109.72	500.3	
16	378	134.27	538.0	
17	389	44.91	174.9	
18	397	45.18	172.4	
19	456	47.26	157.1	
20	522	58.71	170.4	
21	584	46.26	120.1	
22	597	49.17	124.7	
23	618	66.17	162.3	
24	667	56.47	128.3	
25	768	43.39	85.7	
26	921	269.89	443.9	

Assay Class: High Sensitivity DNA Assay
 Data Path: C:\...ents and Settings\Bioanalyzer\2012-07-19\2012-07-19_003.xad


Created: 7/19/2012 11:31:48 AM
 Modified: 7/19/2012 12:16:19 PM

Electropherogram Summary Continued ...

... Peak table for sample 10 : P66-4 Soni 1:3

Peak	Size [bp]	Conc. [pg/μl]	Molarity [pmol/l]	Observations
27	1,863	29.48	24.0	
28	2,349	11.26	7.3	
29	2,698	12.54	7.0	
30	3,530	3.36	1.4	
31	10,380	75.00	10.9	Upper Marker

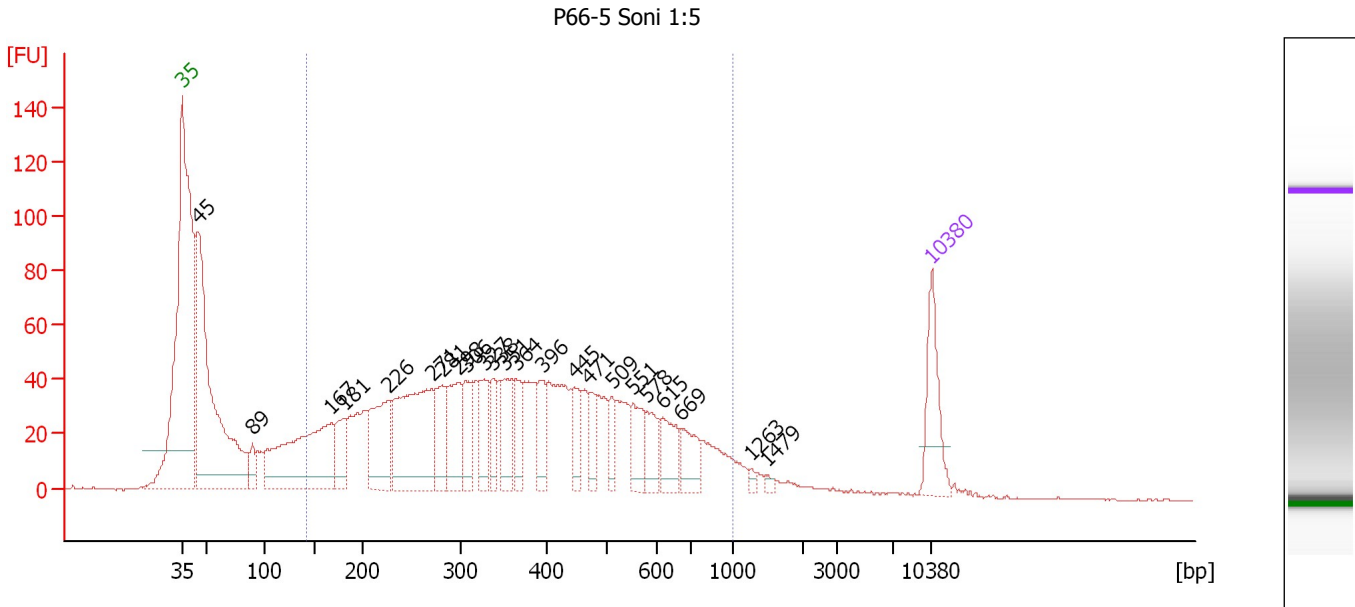
Region table for sample 10 : P66-4 Soni 1:3

From [bp]	To [bp]	Average Size [bp]	Molarity [pmol/l]	Conc. [pg/μl]	Corr. Area	% of Total	Size distribution in CV [%]	Color
200	2,541	627	10,275.4	2,837.15	2,337.4	85	66.1	

Assay Class: High Sensitivity DNA Assay
 Data Path: C:\...ents and Settings\Bioanalyzer\2012-07-19\2012-07-19_003.xad

Created: 7/19/2012 11:31:48 AM
 Modified: 7/19/2012 12:16:19 PM

Electropherogram Summary Continued ...



Overall Results for sample 11 : P66-5 Soni 1:5

Number of peaks found: 23 Corr. Area 1: 1,786.0
 Noise: 0.2

Peak table for sample 11 : P66-5 Soni 1:5

Peak	Size [bp]	Conc. [pg/μl]	Molarity [pmol/l]	Observations
1	35	125.00	5,411.3	Lower Marker
2	45	697.98	23,611.8	
3	89	32.95	559.6	
4	167	348.22	3,156.8	
5	181	78.59	659.3	
6	226	161.35	1,082.7	
7	271	293.07	1,636.3	
8	281	82.21	442.9	
9	298	107.70	548.1	
10	306	65.74	325.4	
11	327	70.95	328.6	
12	338	47.71	214.0	
13	351	78.53	339.3	
14	364	47.96	199.4	
15	396	53.83	206.0	
16	445	39.68	135.0	
17	471	37.44	120.5	
18	509	34.13	101.5	
19	551	55.86	153.7	
20	578	44.13	115.6	
21	615	53.94	132.9	
22	669	52.65	119.2	
23	1,263	6.54	7.8	
24	1,479	5.14	5.3	
25	10,380	75.00	10.9	Upper Marker

Assay Class: High Sensitivity DNA Assay
Data Path: C:\...ents and Settings\Bioanalyzer\2012-07-19\2012-07-19_003.xad

Created: 7/19/2012 11:31:48 AM
Modified: 7/19/2012 12:16:19 PM

Electropherogram Summary Continued ...

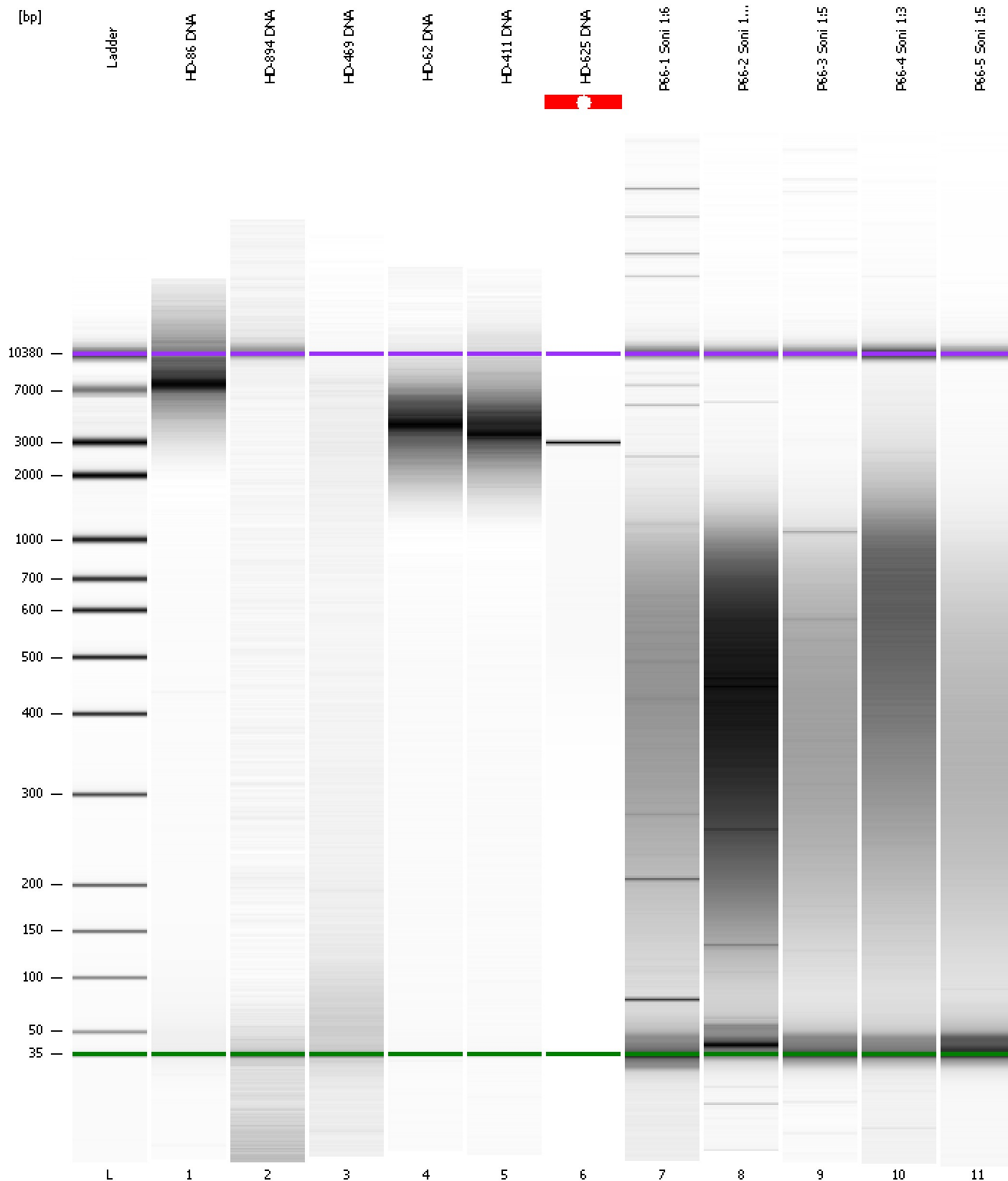
... Region table for sample 11 : **P66-5 Soni 1:5**

From [bp]	To [bp]	Average Size [bp]	Molarity [pmol/l]	Conc. [pg/μl]	Corr. Area	% of Total	Size distribution in CV [%]	Color
143	1,000	392	12,030.7	2,364.21	1,786.0	74	43.7	■

Assay Class: High Sensitivity DNA Assay
Data Path: C:\...ents and Settings\Bioanalyzer\2012-07-19\2012-07-19_003.xad

Created: 7/19/2012 11:31:48 AM
Modified: 7/19/2012 12:16:19 PM

Gel Image



Assay Class: High Sensitivity DNA Assay
Data Path: C:\...ents and Settings\Bioanalyzer\2012-07-19\2012-07-19_003.xad

Created: 7/19/2012 11:31:48 AM
Modified: 7/19/2012 12:16:19 PM

Curves

Standard Curve

