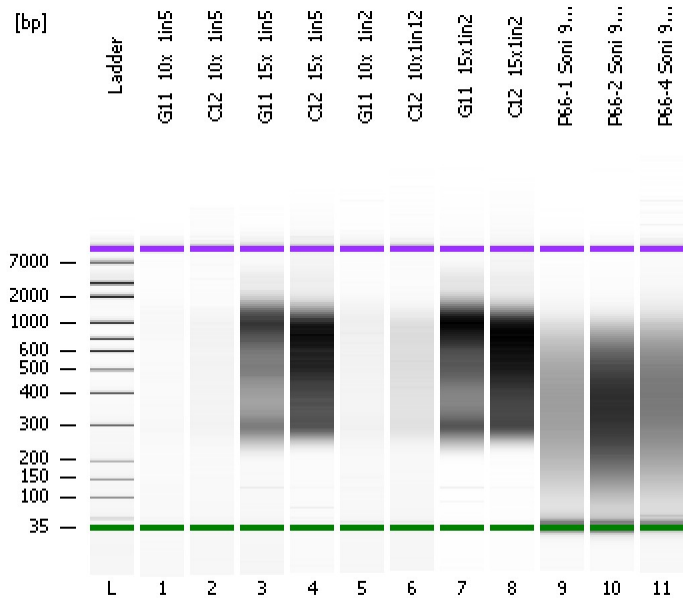


Assay Class: High Sensitivity DNA Assay
Data Path: C:\...ents and Settings\Bioanalyzer\2012-07-19\2012-07-19_004.xad

Created: 7/19/2012 1:19:43 PM
Modified: 7/19/2012 2:04:24 PM

Electrophoresis File Run Summary



Instrument Information:
 Instrument Name: DE13701086 Firmware: C.01.069
 Serial#: DE13701086 Type: G2938B

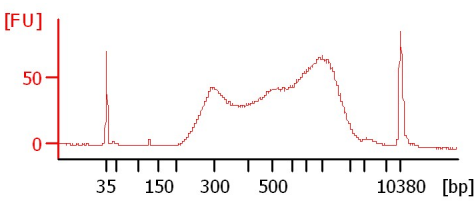
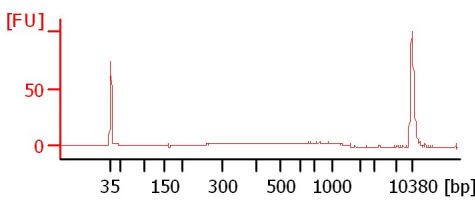
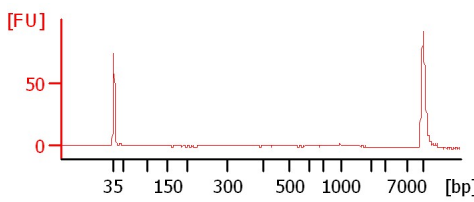
Assay Information:
 Assay Origin Path: C:\Program Files\Agilent\2100 bioanalyzer\2100 expert\assays\dsDNA\High Sensitivity DNA.xsy
 Assay Class: High Sensitivity DNA Assay
 Version: 1.03
 Assay Comments: Copyright © 2003-2010 Agilent Technologies

Chip Information:
 Chip Lot #:
 Reagent Kit Lot #:
 Chip Comments:

G11_10x_1in5

C12_10x_1in5

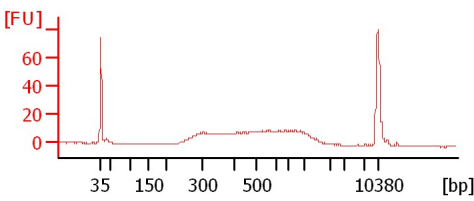
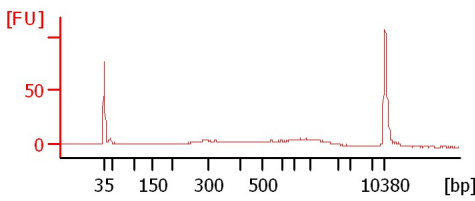
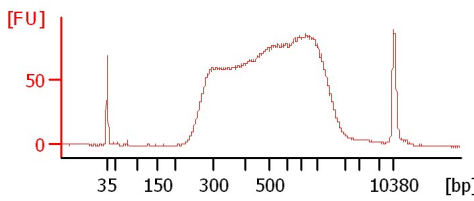
G11_15x_1in5



C12_15x_1in5

G11_10x_1in2

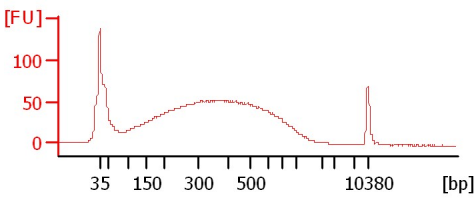
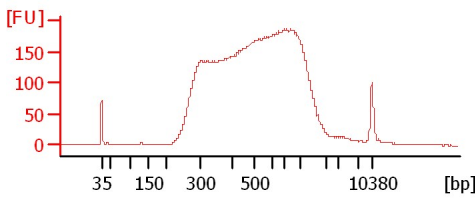
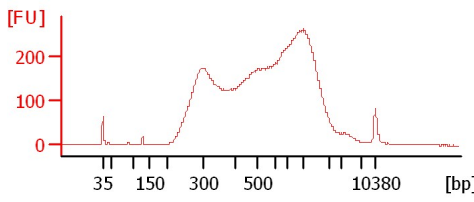
C12_10x1in2



G11_15x1in2

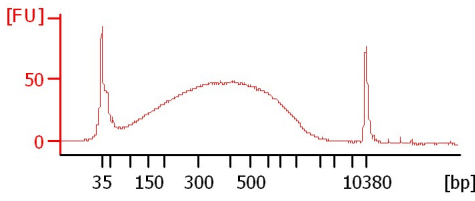
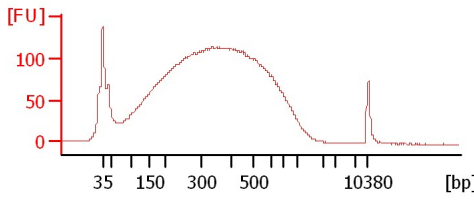
C12_15x1in2

P66-1 Soni 9+2Cycles 1:6



P66-2 Soni 9+2Cycles 1:18

P66-4 Soni 9+3Cycles 1:3



Assay Class: High Sensitivity DNA Assay
 Data Path: C:\...ents and Settings\Bioanalyzer\2012-07-19\2012-07-19_004.xad

Created: 7/19/2012 1:19:43 PM
 Modified: 7/19/2012 2:04:24 PM

Electrophoresis File Run Summary (Chip Summary)

Sample Name	Sample Comment	Rest. Digest	Status	Observation	Result Label	Result Color
G11_10x_1in5		<input type="checkbox"/>	✓			
C12_10x_1in5		<input type="checkbox"/>	✓			
G11_15x_1in5		<input type="checkbox"/>	✓			
C12_15x_1in5		<input type="checkbox"/>	✓			
G11_10x_1in2		<input type="checkbox"/>	✓			
C12_10x1in12		<input type="checkbox"/>	✓			
G11_15x1in2		<input type="checkbox"/>	✓			
C12_15x1in2		<input type="checkbox"/>	✓			
P66-1 Soni 9+2Cycles 1:6		<input type="checkbox"/>	✓			
P66-2 Soni 9+2Cycles 1:18		<input type="checkbox"/>	✓			
P66-4 Soni 9+3Cycles 1:3		<input type="checkbox"/>	✓			
Ladder		<input type="checkbox"/>	✓			

Chip Lot #

Reagent Kit Lot #

Chip Comments :

Assay Class: High Sensitivity DNA Assay
Data Path: C:\...ents and Settings\Bioanalyzer\2012-07-19\2012-07-19_004.xad

Created: 7/19/2012 1:19:43 PM
Modified: 7/19/2012 2:04:24 PM

Electrophoresis Assay Details

General Analysis Settings

Number of Available Sample and Ladder Wells (Max.) : 12
Minimum Visible Range [s] : 32
Maximum Visible Range [s] : 138
Start Analysis Time Range [s] : 33
End Analysis Time Range [s] : 137.5
Ladder Concentration [pg/μl] : 1950
Uses Standard Area for Ladder Fragments
Lower Marker Concentration [pg/μl] : 125
Upper Marker Concentration [pg/μl] : 75
Used Upper Marker for Quantitation
Standard Curve Fit is Point to Point
Show Data Aligned to Lower and Upper Marker

Integrator Settings

Integration Start Time [s] : 33.05
Integration End Time [s] : 137
Slope Threshold : 0.8
Height Threshold [FU] : 5
Area Threshold : 0.1
Width Threshold [s] : 0.6
Baseline Plateau [s] : 0.5

Filter Settings

Filter Width [s] : 0.5
Polynomial Order : 4

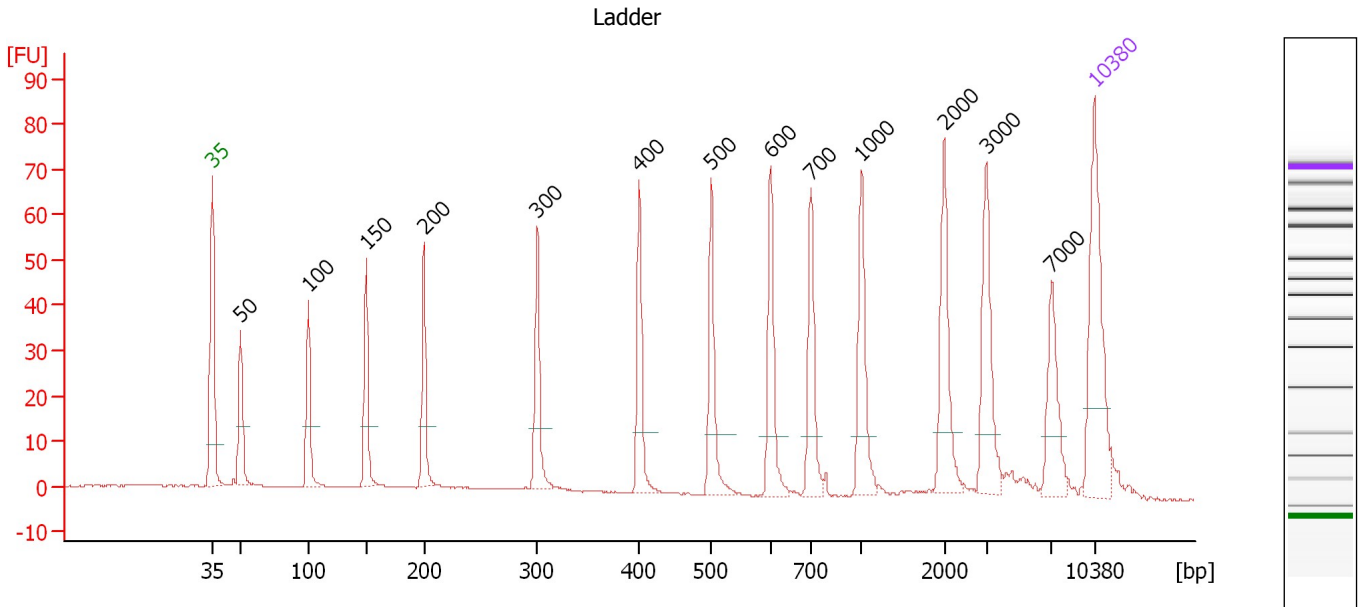
Ladder

Ladder Peak	Size	Area
1	35	160
2	50	210
3	100	208
4	150	221
5	200	242
6	300	270
7	400	305
8	500	306
9	600	336
10	700	321
11	1000	366
12	2000	413
13	3000	411
14	7000	400
15	10380	214

Assay Class: High Sensitivity DNA Assay
 Data Path: C:\...ents and Settings\Bioanalyzer\2012-07-19\2012-07-19_004.xad

Created: 7/19/2012 1:19:43 PM
 Modified: 7/19/2012 2:04:24 PM

Electropherogram Summary



Overall Results for Ladder

Noise: 0.1

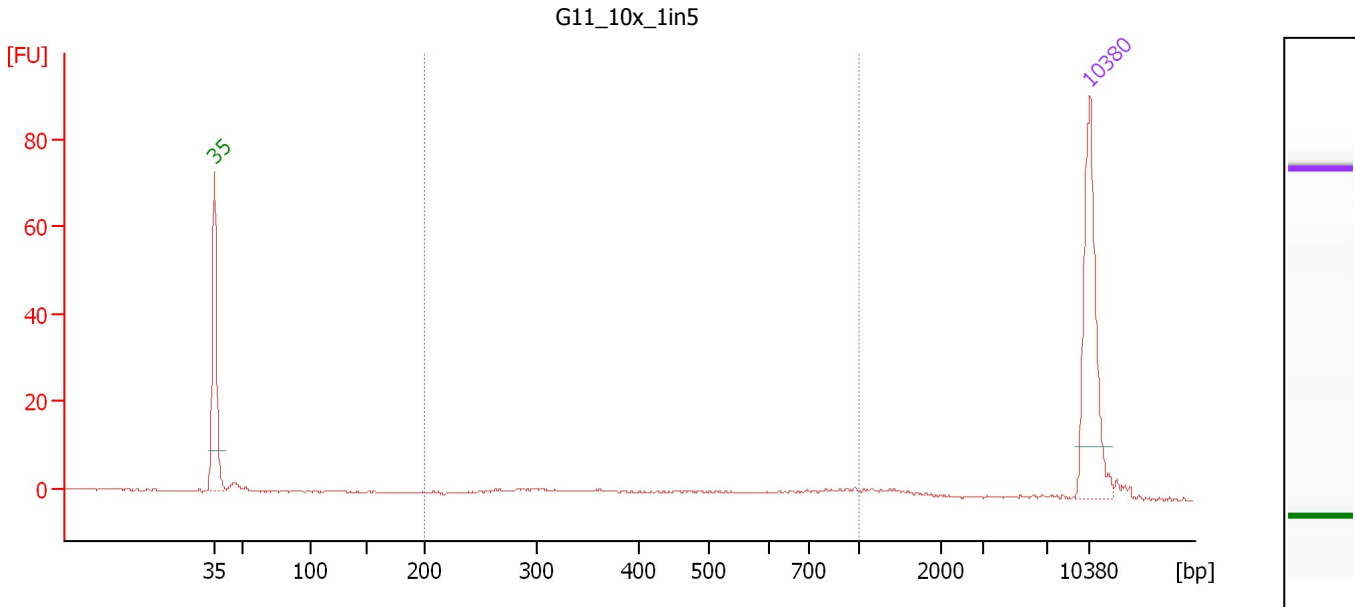
Peak table for Ladder

Peak	Size [bp]	Conc. [pg/μl]	Molarity [pmol/l]	Observations
1	35	125.00	5,411.3	Lower Marker
2	50	150.00	4,545.5	Ladder Peak
3	100	150.00	2,272.7	Ladder Peak
4	150	150.00	1,515.2	Ladder Peak
5	200	150.00	1,136.4	Ladder Peak
6	300	150.00	757.6	Ladder Peak
7	400	150.00	568.2	Ladder Peak
8	500	150.00	454.5	Ladder Peak
9	600	150.00	378.8	Ladder Peak
10	700	150.00	324.7	Ladder Peak
11	1,000	150.00	227.3	Ladder Peak
12	2,000	150.00	113.6	Ladder Peak
13	3,000	150.00	75.8	Ladder Peak
14	7,000	150.00	32.5	Ladder Peak
15	10,380	75.00	10.9	Upper Marker

Assay Class: High Sensitivity DNA Assay
 Data Path: C:\...ents and Settings\Bioanalyzer\2012-07-19\2012-07-19_004.xad

Created: 7/19/2012 1:19:43 PM
 Modified: 7/19/2012 2:04:24 PM

Electropherogram Summary Continued ...



Overall Results for sample 1 : G11 10x 1in5

Number of peaks found: 0 Corr. Area 1: 40.2
 Noise: 0.2

Peak table for sample 1 : G11 10x 1in5

Peak	Size [bp]	Conc. [pg/μl]	Molarity [pmol/l]	Observations
1	35	125.00	5,411.3	Lower Marker
2	10,380	75.00	10.9	Upper Marker

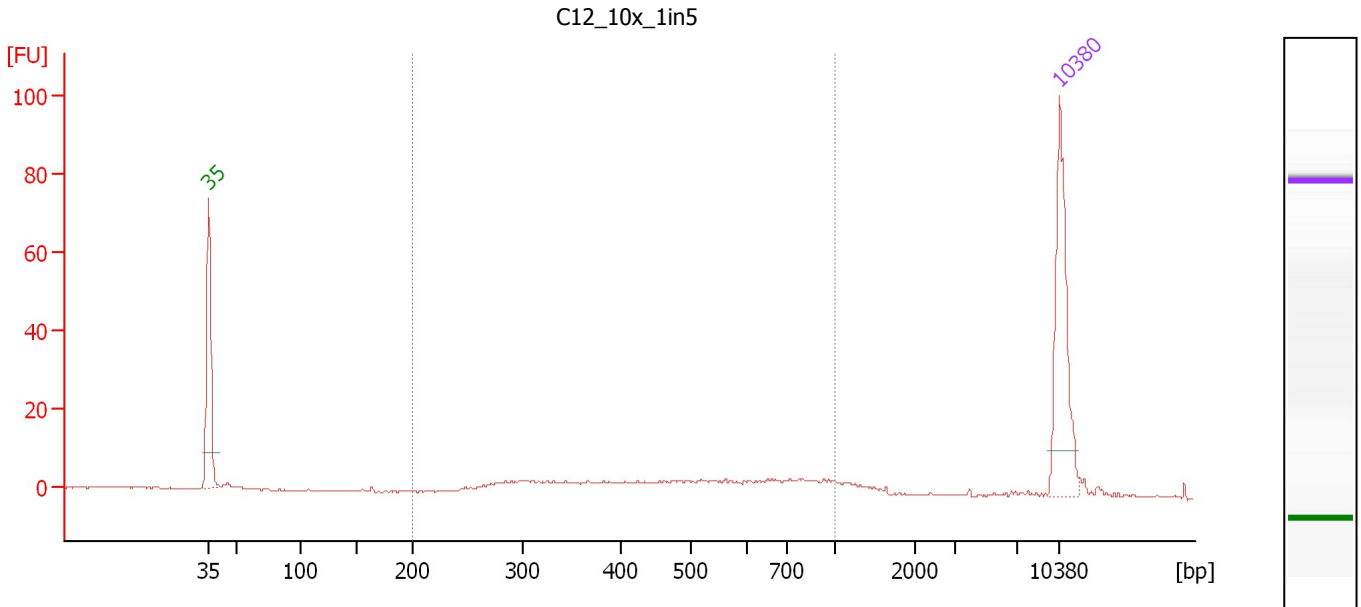
Region table for sample 1 : G11 10x 1in5

From [bp]	To [bp]	Average Size [bp]	Molarity [pmol/l]	Conc. [pg/μl]	Corr. Area	% of Total	Size distribution in CV [%]	Color
200	1,000	528	167.7	46.29	40.2	60	40.3	Blue

Assay Class: High Sensitivity DNA Assay
 Data Path: C:\...ents and Settings\Bioanalyzer\2012-07-19\2012-07-19_004.xad

Created: 7/19/2012 1:19:43 PM
 Modified: 7/19/2012 2:04:24 PM

Electropherogram Summary Continued ...



Overall Results for sample 2 : C12_10x_1in5

Number of peaks found: 0 Corr. Area 1: 120.8
 Noise: 0.1

Peak table for sample 2 : C12_10x_1in5

Peak	Size [bp]	Conc. [pg/μl]	Molarity [pmol/l]	Observations
1	35	125.00	5,411.3	Lower Marker
2	10,380	75.00	10.9	Upper Marker

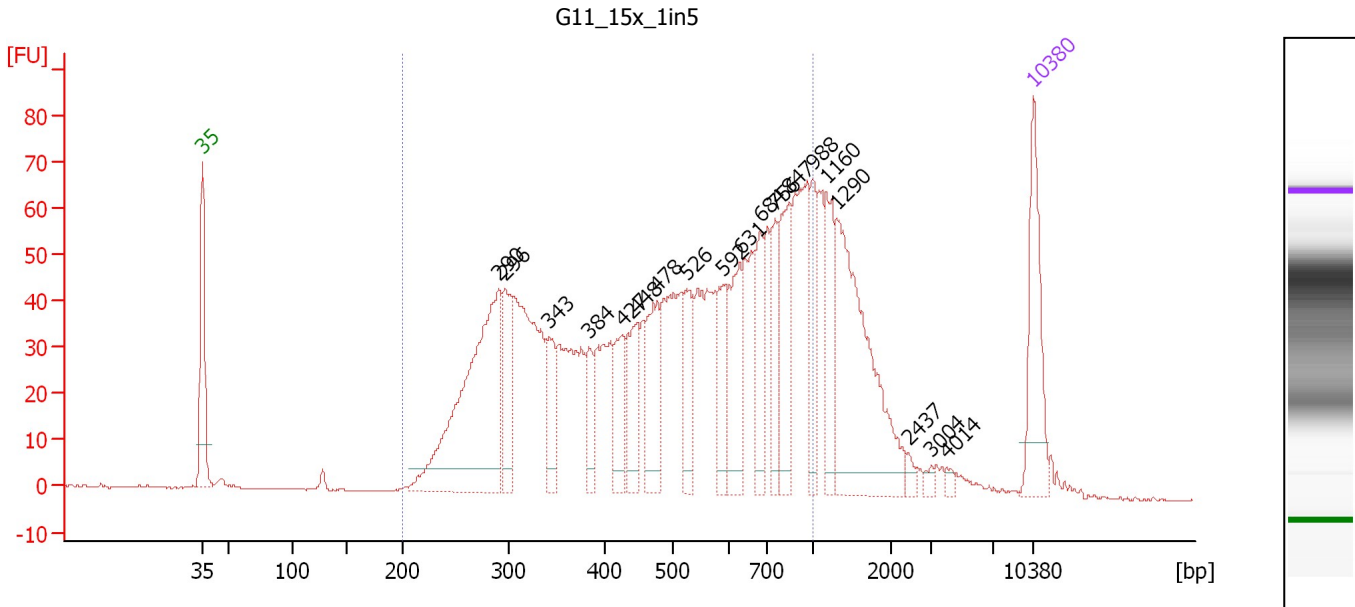
Region table for sample 2 : C12_10x_1in5

From [bp]	To [bp]	Average Size [bp]	Molarity [pmol/l]	Conc. [pg/μl]	Corr. Area	% of Total	Size distribution in CV [%]	Color
200	1,000	517	480.6	135.50	120.8	75	36.9	Blue

Assay Class: High Sensitivity DNA Assay
 Data Path: C:\...ents and Settings\Bioanalyzer\2012-07-19\2012-07-19_004.xad

Created: 7/19/2012 1:19:43 PM
 Modified: 7/19/2012 2:04:24 PM

Electropherogram Summary Continued ...



Overall Results for sample 3 : G11 15x 1in5

Number of peaks found: 19 Corr. Area 1: 1,663.9
 Noise: 0.1

Peak table for sample 3 : G11 15x 1in5

Peak	Size [bp]	Conc. [pg/μl]	Molarity [pmol/l]	Observations
1	35	125.00	5,411.3	Lower Marker
2	290	342.87	1,788.9	
3	296	80.05	409.2	
4	343	51.46	227.5	
5	384	36.53	144.2	
6	427	55.07	195.5	
7	448	67.89	229.6	
8	478	79.76	252.9	
9	526	56.27	162.2	
10	592	55.02	140.9	
11	631	80.45	193.1	
12	684	60.88	134.8	
13	756	48.68	97.5	
14	847	86.36	154.5	
15	988	45.29	69.5	
16	1,160	65.94	86.1	
17	1,290	207.30	243.4	
18	2,437	7.17	4.5	
19	3,004	4.61	2.3	
20	4,014	4.49	1.7	
21	10,380	75.00	10.9	Upper Marker

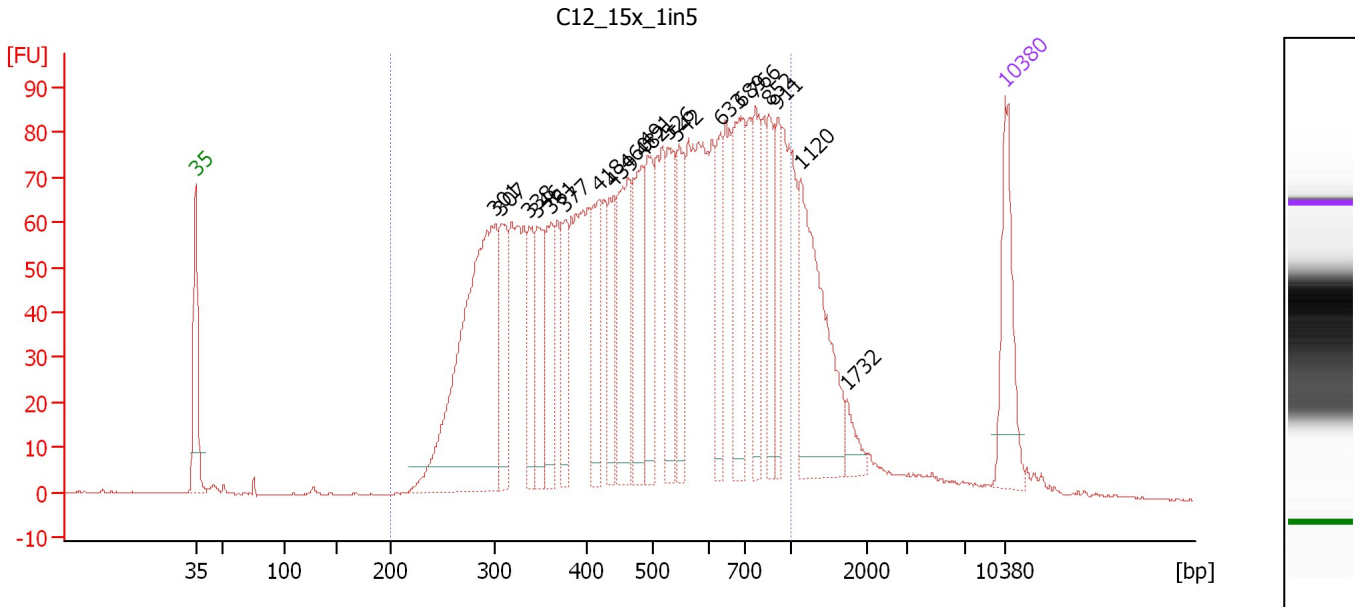
Region table for sample 3 : G11 15x 1in5

From [bp]	To [bp]	Average Size [bp]	Molarity [pmol/l]	Conc. [pg/μl]	Corr. Area	% of Total	Size distribution in CV [%]	Color
200	1,000	525	7,697.4	2,127.78	1,663.9	81	39.2	Blue

Assay Class: High Sensitivity DNA Assay
 Data Path: C:\...ents and Settings\Bioanalyzer\2012-07-19\2012-07-19_004.xad

Created: 7/19/2012 1:19:43 PM
 Modified: 7/19/2012 2:04:24 PM

Electropherogram Summary Continued ...



Overall Results for sample 4 : C12 15x 1in5

Number of peaks found: 20 Corr. Area 1: 2,611.5
 Noise: 0.2

Peak table for sample 4 : C12 15x 1in5

Peak	Size [bp]	Conc. [pg/μl]	Molarity [pmol/l]	Observations
1	35	125.00	5,411.3	Lower Marker
2	301	449.87	2,262.9	
3	307	102.91	507.1	
4	338	69.51	311.8	
5	346	82.82	363.0	
6	361	84.96	356.5	
7	377	64.92	261.2	
8	418	92.10	333.5	
9	439	69.02	238.0	
10	460	127.13	419.1	
11	482	106.54	334.8	
12	491	94.76	292.4	
13	526	87.96	253.2	
14	542	85.78	239.7	
15	633	63.36	151.7	
16	689	119.14	262.0	
17	766	78.89	156.0	
18	852	60.93	108.3	
19	911	54.29	90.3	
20	1,120	178.65	241.6	
21	1,732	17.08	14.9	
22	10,380	75.00	10.9	Upper Marker

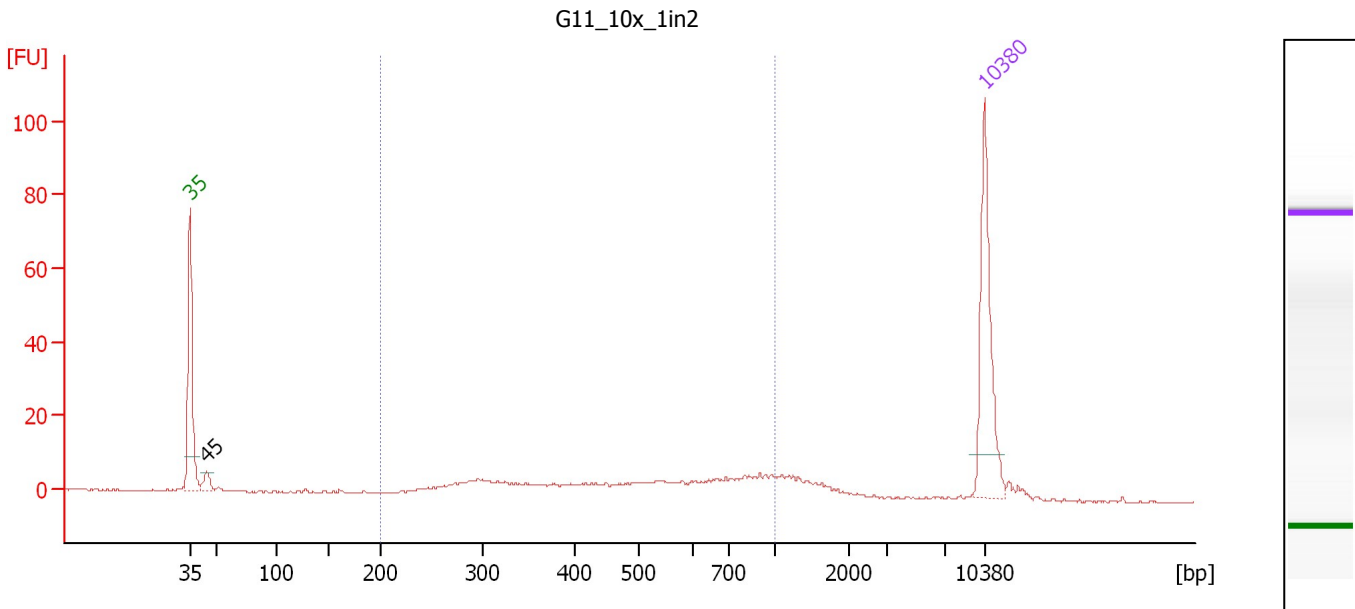
Region table for sample 4 : C12 15x 1in5

From [bp]	To [bp]	Average Size [bp]	Molarity [pmol/l]	Conc. [pg/μl]	Corr. Area	% of Total	Size distribution in CV [%]	Color
200	1,000	517	11,142.1	3,161.58	2,611.5	88	36.4	Blue

Assay Class: High Sensitivity DNA Assay
 Data Path: C:\...ents and Settings\Bioanalyzer\2012-07-19\2012-07-19_004.xad

Created: 7/19/2012 1:19:43 PM
 Modified: 7/19/2012 2:04:24 PM

Electropherogram Summary Continued ...



Overall Results for sample 5 : G11_10x_1in2

Number of peaks found: 1 Corr. Area 1: 142.3
 Noise: 0.2

Peak table for sample 5 : G11_10x_1in2

Peak	Size [bp]	Conc. [pg/μl]	Molarity [pmol/l]	Observations
1	35	125.00	5,411.3	Lower Marker
2	45	12.85	435.1	
3	10,380	75.00	10.9	Upper Marker

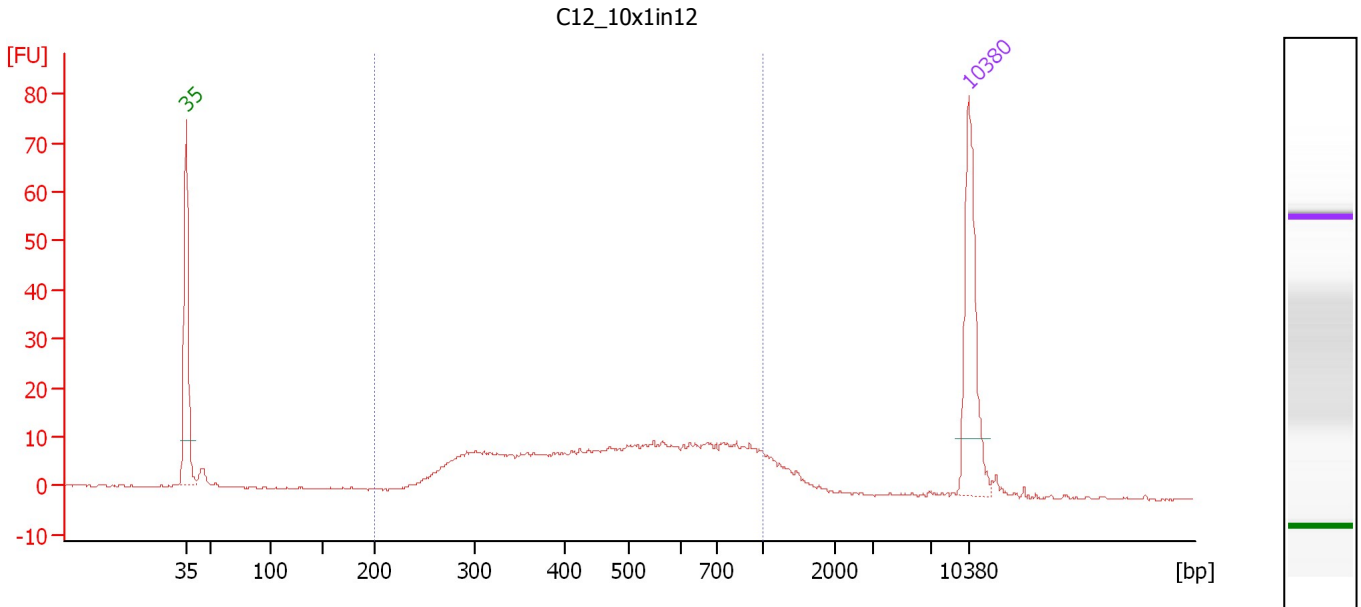
Region table for sample 5 : G11_10x_1in2

From [bp]	To [bp]	Average Size [bp]	Molarity [pmol/l]	Conc. [pg/μl]	Corr. Area	% of Total	Size distribution in CV [%]	Color
200	1,000	526	574.2	159.07	142.3	73	39.2	Blue

Assay Class: High Sensitivity DNA Assay
 Data Path: C:\...ents and Settings\Bioanalyzer\2012-07-19\2012-07-19_004.xad

Created: 7/19/2012 1:19:43 PM
 Modified: 7/19/2012 2:04:24 PM

Electropherogram Summary Continued ...



Overall Results for sample 6 : C12_10x1in12

Number of peaks found: 0 Corr. Area 1: 321.3
 Noise: 0.1

Peak table for sample 6 : C12_10x1in12

Peak	Size [bp]	Conc. [pg/μl]	Molarity [pmol/l]	Observations
1	35	125.00	5,411.3	Lower Marker
2	10,380	75.00	10.9	Upper Marker

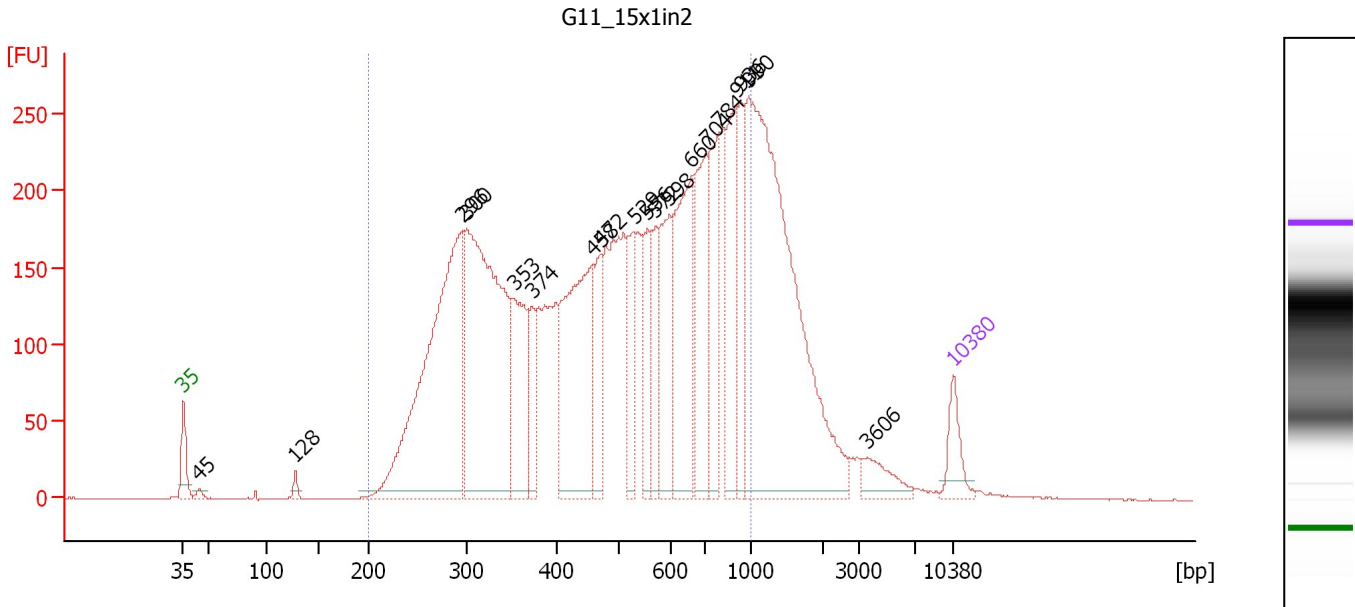
Region table for sample 6 : C12_10x1in12

From [bp]	To [bp]	Average Size [bp]	Molarity [pmol/l]	Conc. [pg/μl]	Corr. Area	% of Total	Size distribution in CV [%]	Color
200	1,000	511	1,488.4	417.49	321.3	87	36.3	Blue

Assay Class: High Sensitivity DNA Assay
 Data Path: C:\...ents and Settings\Bioanalyzer\2012-07-19\2012-07-19_004.xad

Created: 7/19/2012 1:19:43 PM
 Modified: 7/19/2012 2:04:24 PM

Electropherogram Summary Continued ...



Overall Results for sample 7 : G11_15x1in2

Number of peaks found: 19 Corr. Area 1: 6,525.1
 Noise: 0.1

Peak table for sample 7 : G11_15x1in2

Peak	Size [bp]	Conc. [pg/μl]	Molarity [pmol/l]	Observations
1	35	125.00	5,411.3	Lower Marker
2	45	16.37	554.6	
3	128	26.49	314.0	
4	296	1,351.83	6,929.7	
5	300	1,340.40	6,772.5	
6	353	355.54	1,527.5	
7	374	144.77	587.0	
8	458	667.59	2,209.3	
9	472	219.67	704.8	
10	529	191.47	548.1	
11	556	196.92	536.5	
12	572	149.33	395.8	
13	598	294.96	746.8	
14	660	496.63	1,140.9	
15	704	357.71	769.6	
16	784	290.73	561.9	
17	911	319.09	531.0	
18	936	198.25	321.0	
19	990	1,459.92	2,233.9	
20	3,606	73.45	30.9	
21	10,380	75.00	10.9	Upper Marker

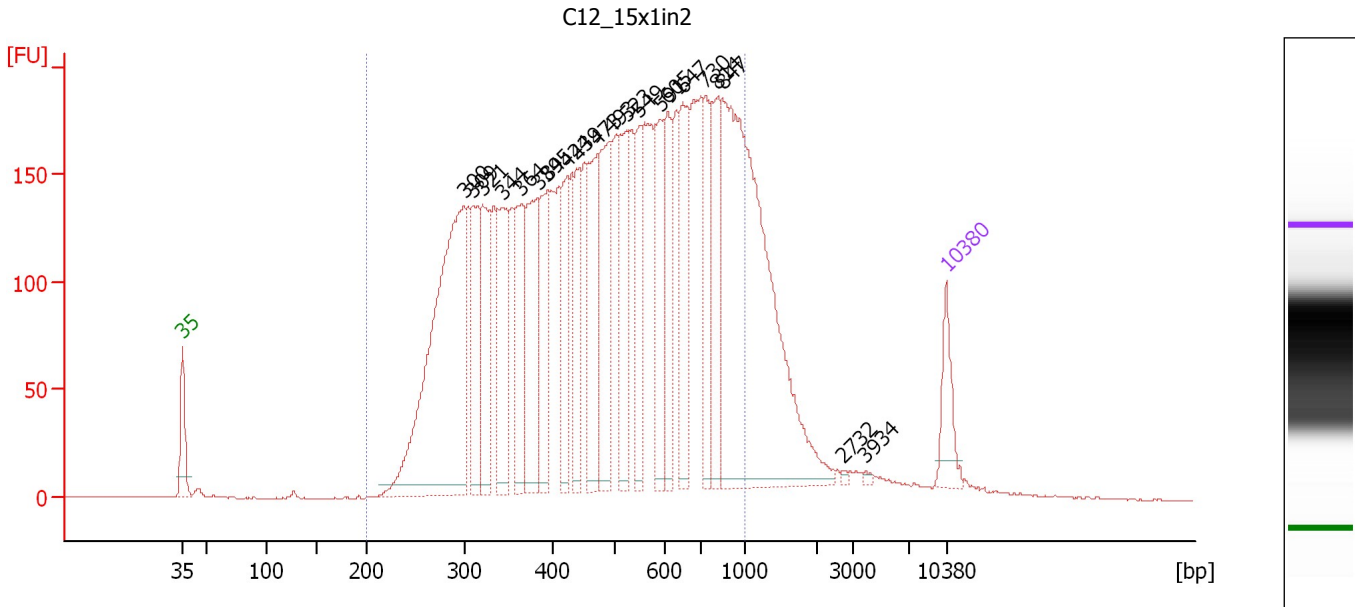
Region table for sample 7 : G11_15x1in2

From [bp]	To [bp]	Average Size [bp]	Molarity [pmol/l]	Conc. [pg/μl]	Corr. Area	% of Total	Size distribution in CV [%]	Color
200	1,000	522	29,324.4	8,097.62	6,525.1	82	39.0	Blue

Assay Class: High Sensitivity DNA Assay
 Data Path: C:\...ents and Settings\Bioanalyzer\2012-07-19\2012-07-19_004.xad

Created: 7/19/2012 1:19:43 PM
 Modified: 7/19/2012 2:04:24 PM

Electropherogram Summary Continued ...



Overall Results for sample 8 : C12_15x1in2

Number of peaks found: 21 Corr. Area 1: 5,781.8
 Noise: 0.2

Peak table for sample 8 : C12_15x1in2

Peak	Size [bp]	Conc. [pg/μl]	Molarity [pmol/l]	Observations
1	35	125.00	5,411.3	Lower Marker
2	300	1,002.34	5,069.7	
3	309	236.68	1,159.8	
4	321	228.71	1,078.5	
5	344	275.82	1,216.0	
6	364	242.53	1,008.8	
7	384	280.17	1,106.6	
8	395	212.72	817.0	
9	424	170.35	608.9	
10	439	150.10	517.7	
11	473	243.74	781.3	
12	493	296.45	910.6	
13	523	213.20	617.6	
14	549	149.77	413.3	
15	591	198.56	509.3	
16	605	165.51	414.7	
17	647	215.43	504.3	
18	730	182.02	377.6	
19	814	183.80	342.0	
20	847	1,096.42	1,961.0	
21	2,732	3.71	2.1	
22	3,934	4.29	1.7	
23	10,380	75.00	10.9	Upper Marker

Assay Class: High Sensitivity DNA Assay
Data Path: C:\...ents and Settings\Bioanalyzer\2012-07-19\2012-07-19_004.xad

Created: 7/19/2012 1:19:43 PM
Modified: 7/19/2012 2:04:24 PM

Electropherogram Summary Continued ...

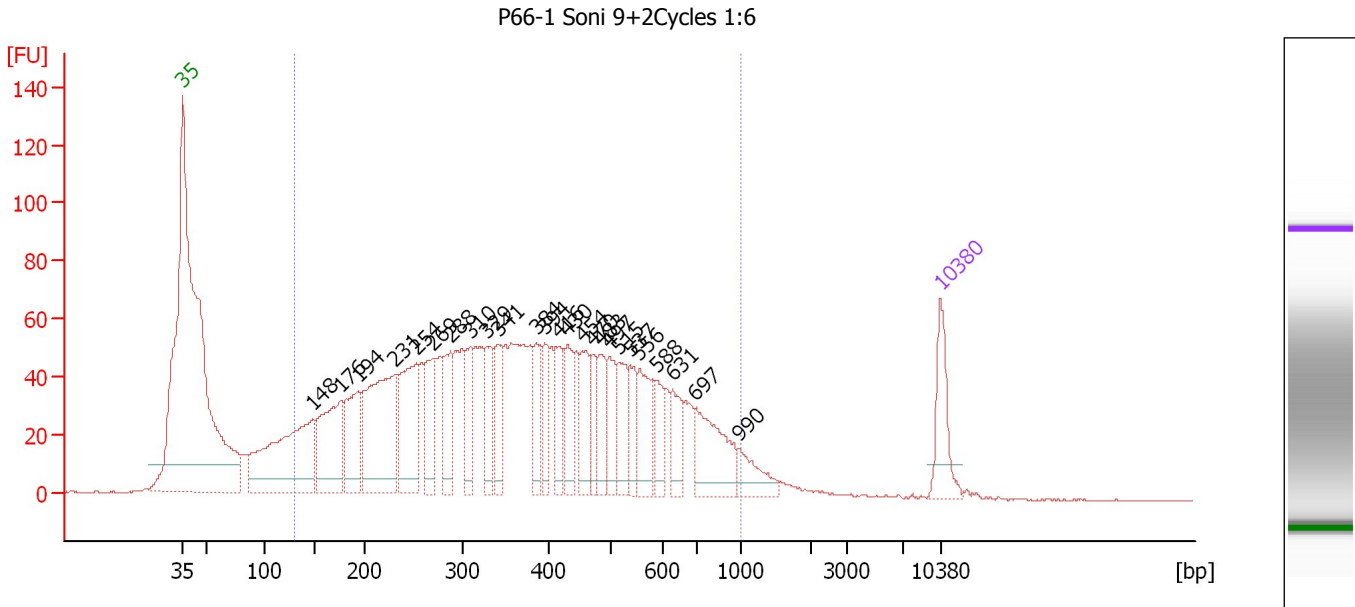
... Region table for sample 8 : C12_15x1in2

From [bp]	To [bp]	Average Size [bp]	Molarity [pmol/l]	Conc. [pg/μl]	Corr. Area	% of Total	Size distribution in CV [%]	Color
200	1,000	515	25,366.6	7,175.97	5,781.8	89	36.4	■

Assay Class: High Sensitivity DNA Assay
 Data Path: C:\...ents and Settings\Bioanalyzer\2012-07-19\2012-07-19_004.xad

Created: 7/19/2012 1:19:43 PM
 Modified: 7/19/2012 2:04:24 PM

Electropherogram Summary Continued ...



Overall Results for sample 9 : P66-1 Soni 9+2Cycles 1:6

Number of peaks found: 25 Corr. Area 1: 2,354.1
 Noise: 0.2

Peak table for sample 9 : P66-1 Soni 9+2Cycles 1:6

Peak	Size [bp]	Conc. [pg/μl]	Molarity [pmol/l]	Observations
1	35	125.00	5,411.3	Lower Marker
2	148	444.07	4,536.3	
3	176	250.68	2,160.4	
4	194	173.75	1,359.8	
5	231	370.32	2,426.4	
6	254	220.21	1,315.3	
7	269	122.68	691.1	
8	288	104.12	547.6	
9	310	97.02	474.3	
10	329	99.35	457.8	
11	341	92.24	409.8	
12	384	83.96	331.0	
13	394	66.71	256.5	
14	416	78.77	287.1	
15	430	92.04	324.7	
16	454	92.44	308.7	
17	470	62.88	202.7	
18	483	74.96	235.1	
19	497	72.22	220.2	
20	515	80.56	237.0	
21	537	60.28	170.1	
22	556	97.05	264.5	
23	588	52.06	134.0	
24	631	68.01	163.4	
25	697	146.46	318.6	
26	990	54.51	83.4	


Assay Class: High Sensitivity DNA Assay
Data Path: C:\...ents and Settings\Bioanalyzer\2012-07-19\2012-07-19_004.xad

Created: 7/19/2012 1:19:43 PM
Modified: 7/19/2012 2:04:24 PM

Electropherogram Summary Continued ...**... Peak table for sample 9 : P66-1 Soni 9+2Cycles 1:6**

Peak	Size [bp]	Conc. [pg/ μ l]	Molarity [pmol/l]	Observations
27	10,380	75.00	10.9	Upper Marker

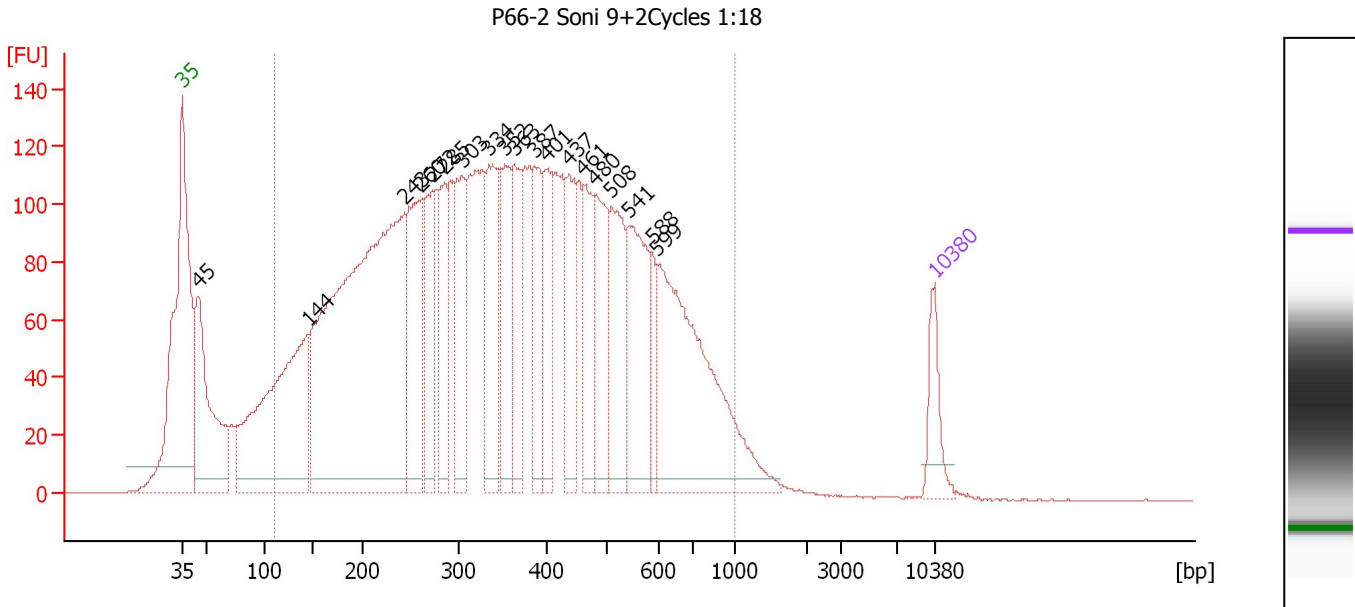
Region table for sample 9 : P66-1 Soni 9+2Cycles 1:6

From [bp]	To [bp]	Average Size [bp]	Molarity [pmol/l]	Conc. [pg/ μ l]	Corr. Area	% of Total	Size distribution in CV [%]	Color
128	1,000	393	20,386.8	3,917.10	2,354.1	91	44.2	

Assay Class: High Sensitivity DNA Assay
 Data Path: C:\...ents and Settings\Bioanalyzer\2012-07-19\2012-07-19_004.xad

Created: 7/19/2012 1:19:43 PM
 Modified: 7/19/2012 2:04:24 PM

Electropherogram Summary Continued ...



Overall Results for sample 10 : P66-2 Soni 9+2Cycles 1:18

Number of peaks found: 19 Corr. Area 1: 5,245.5
 Noise: 0.3

Peak table for sample 10 : P66-2 Soni 9+2Cycles 1:18

Peak	Size [bp]	Conc. [pg/μl]	Molarity [pmol/l]	Observations
1	35	125.00	5,411.3	Lower Marker
2	45	557.51	18,785.7	
3	144	914.14	9,585.3	
4	243	1,862.34	11,592.6	
5	260	364.52	2,120.2	
6	272	240.83	1,341.2	
7	285	227.12	1,206.2	
8	303	284.21	1,420.0	
9	334	297.67	1,350.4	
10	352	216.91	932.5	
11	363	211.30	882.3	
12	387	189.23	741.2	
13	401	192.76	727.7	
14	437	201.89	699.9	
15	461	190.95	627.1	
16	480	250.29	790.7	
17	508	256.17	764.0	
18	541	309.83	868.1	
19	588	78.39	201.9	
20	599	649.32	1,642.6	
21	10,380	75.00	10.9	Upper Marker

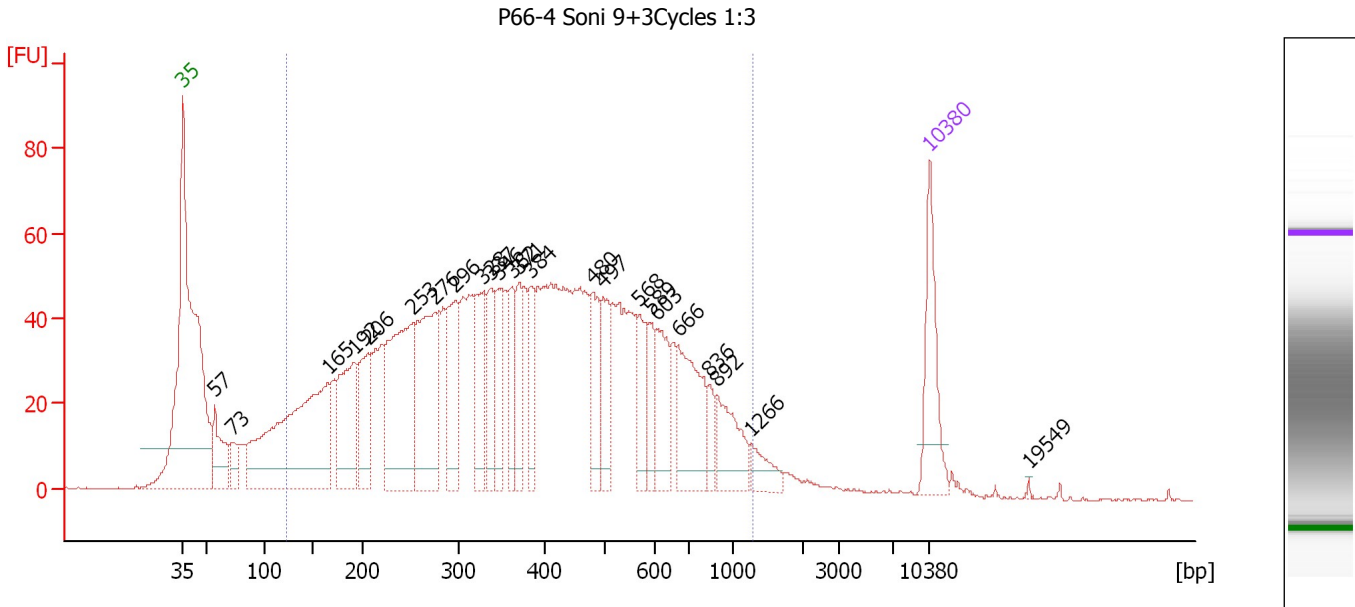
Region table for sample 10 : P66-2 Soni 9+2Cycles 1:18

From [bp]	To [bp]	Average Size [bp]	Molarity [pmol/l]	Conc. [pg/μl]	Corr. Area	% of Total	Size distribution in CV [%]	Color
111	1,000	381	44,970.7	8,181.05	5,245.5	90	44.9	Blue

Assay Class: High Sensitivity DNA Assay
 Data Path: C:\...ents and Settings\Bioanalyzer\2012-07-19\2012-07-19_004.xad

Created: 7/19/2012 1:19:43 PM
 Modified: 7/19/2012 2:04:24 PM

Electropherogram Summary Continued ...



Overall Results for sample 11 : P66-4 Soni 9+3Cycles 1:3

Number of peaks found: 24 Corr. Area 1: 2,203.3
 Noise: 0.2

Peak table for sample 11 : P66-4 Soni 9+3Cycles 1:3

Peak	Size [bp]	Conc. [pg/μl]	Molarity [pmol/l]	Observations
1	35	125.00	5,411.3	Lower Marker
2	57	88.11	2,340.6	
3	73	38.10	792.4	
4	165	445.21	4,089.3	
5	192	159.38	1,255.7	
6	206	107.08	787.3	
7	253	258.18	1,545.0	
8	276	220.46	1,210.5	
9	296	125.41	640.9	
10	328	93.17	430.1	
11	337	73.36	329.3	
12	346	72.01	315.2	
13	362	60.51	253.1	
14	371	59.93	244.8	
15	384	62.26	245.3	
16	480	69.70	220.2	
17	497	71.29	217.3	
18	568	54.74	146.1	
19	589	39.96	102.8	
20	603	71.33	179.3	
21	666	124.93	284.1	
22	836	24.20	43.9	
23	892	70.04	119.0	
24	1,266	27.48	32.9	
25	10,380	75.00	10.9	Upper Marker
26	19,549	0.00	0.0	

Assay Class: High Sensitivity DNA Assay
Data Path: C:\...ents and Settings\Bioanalyzer\2012-07-19\2012-07-19_004.xad

Created: 7/19/2012 1:19:43 PM
Modified: 7/19/2012 2:04:24 PM

Electropherogram Summary Continued ...

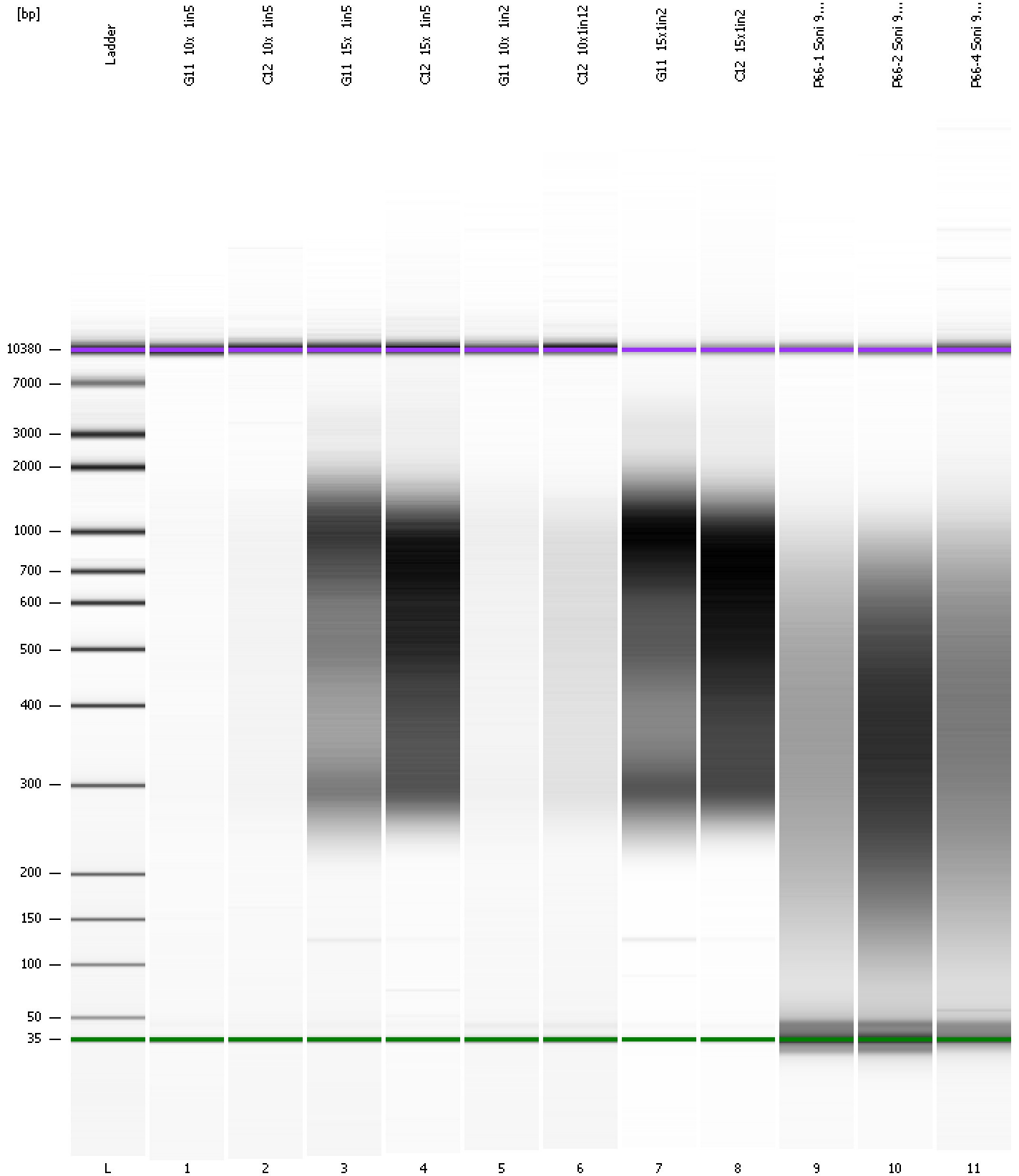
... Region table for sample 11 : P66-4 Soni 9+3Cycles 1:3

From [bp]	To [bp]	Average Size [bp]	Molarity [pmol/l]	Conc. [pg/μl]	Corr. Area	% of Total	Size distribution in CV [%]	Color
124	1,279	415	17,020.5	3,333.86	2,203.3	90	48.4	■

Assay Class: High Sensitivity DNA Assay
Data Path: C:\...ents and Settings\Bioanalyzer\2012-07-19\2012-07-19_004.xad

Created: 7/19/2012 1:19:43 PM
Modified: 7/19/2012 2:04:24 PM

Gel Image



Assay Class: High Sensitivity DNA Assay
Data Path: C:\...ents and Settings\Bioanalyzer\2012-07-19\2012-07-19_004.xad

Created: 7/19/2012 1:19:43 PM
Modified: 7/19/2012 2:04:24 PM

Curves

Standard Curve

