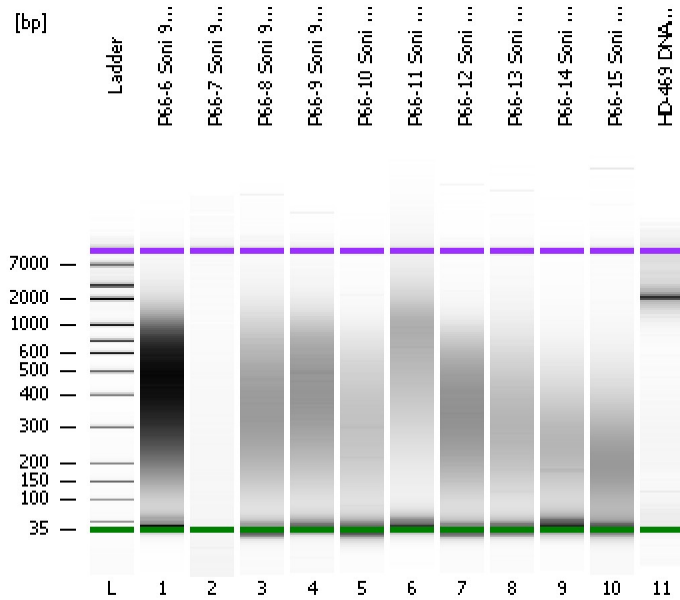


Assay Class: High Sensitivity DNA Assay
Data Path: C:\...ents and Settings\Bioanalyzer\2012-07-19\2012-07-19_005.xad

Created: 7/19/2012 2:20:48 PM
Modified: 7/19/2012 3:03:06 PM

Electrophoresis File Run Summary



Instrument Information:

Instrument Name: DE13701086 Firmware: C.01.069
Serial#: DE13701086 Type: G2938B

Assay Information:

Assay Origin Path: C:\Program Files\Agilent\2100 bioanalyzer\2100 expert\assays\dsDNA\High Sensitivity DNA.xsy
Assay Class: High Sensitivity DNA Assay
Version: 1.03
Assay Comments: Copyright © 2003-2010 Agilent Technologies

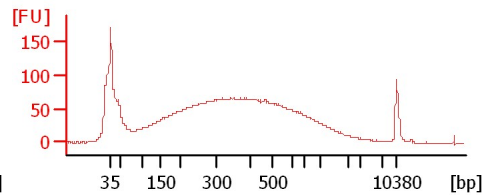
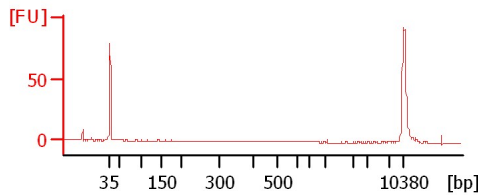
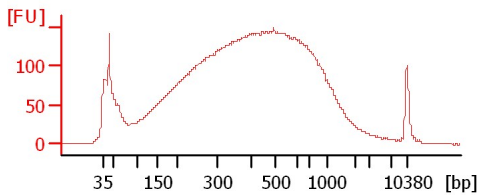
Chip Information:

Chip Lot #:
Reagent Kit Lot #:
Chip Comments:

P66-6 Soni 9Cycles 1:12

P66-7 Soni 9Cycles

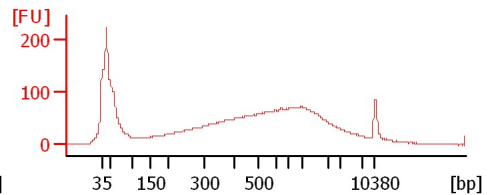
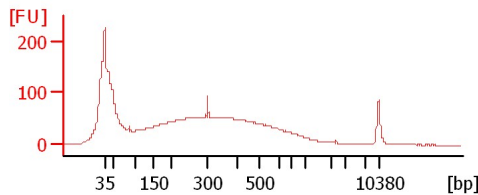
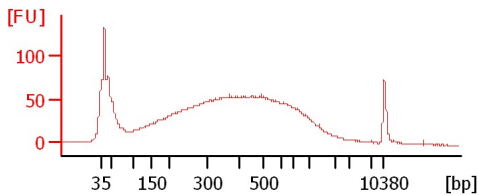
P66-8 Soni 9Cycles 1:9



P66-9 Soni 9Cycles

P66-10 Soni 9Cycles 1:2

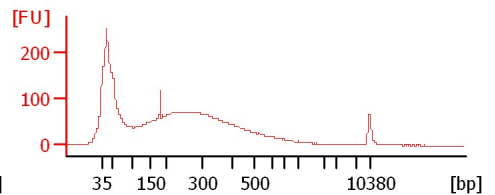
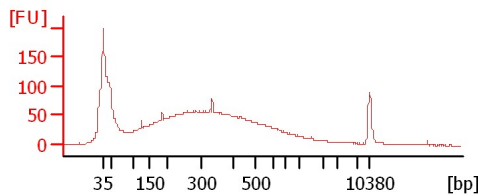
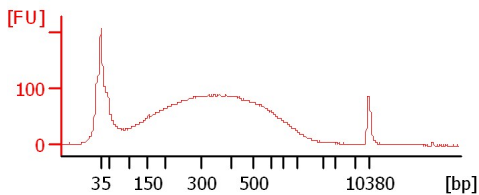
P66-11 Soni 9Cycles 1:6



P66-12 Soni 9Cycles 1:12

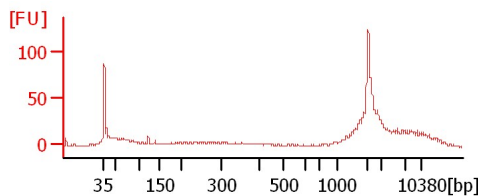
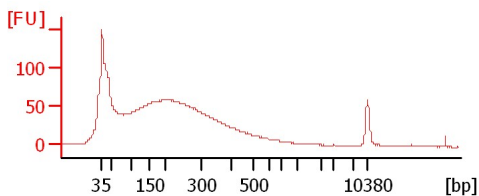
P66-13 Soni 9Cycles 1:3

P66-14 Soni 9Cycles 1:6



P66-15 Soni 9Cycles 1:2

HD-469 DNA 1:2



Assay Class: High Sensitivity DNA Assay
 Data Path: C:\...ents and Settings\Bioanalyzer\2012-07-19\2012-07-19_005.xad

Created: 7/19/2012 2:20:48 PM
 Modified: 7/19/2012 3:03:06 PM

Electrophoresis File Run Summary (Chip Summary)

Sample Name	Sample Comment	Rest. Digest	Status	Observation	Result Label	Result Color
P66-6 Soni 9Cycles 1:12		<input type="checkbox"/>	✓			
P66-7 Soni 9Cycles		<input type="checkbox"/>	✓			
P66-8 Soni 9Cycles 1:9		<input type="checkbox"/>	✓			
P66-9 Soni 9Cycles		<input type="checkbox"/>	✓			
P66-10 Soni 9Cycles 1:2		<input type="checkbox"/>	✓			
P66-11 Soni 9Cycles 1:6		<input type="checkbox"/>	✓			
P66-12 Soni 9Cycles 1:12		<input type="checkbox"/>	✓			
P66-13 Soni 9Cycles 1:3		<input type="checkbox"/>	✓			
P66-14 Soni 9Cycles 1:6		<input type="checkbox"/>	✓			
P66-15 Soni 9Cycles 1:2		<input type="checkbox"/>	✓			
HD-469 DNA 1:2		<input type="checkbox"/>	✓			
Ladder		<input type="checkbox"/>	✓			

Chip Lot #

Reagent Kit Lot #

Chip Comments :

Assay Class: High Sensitivity DNA Assay
Data Path: C:\...ents and Settings\Bioanalyzer\2012-07-19\2012-07-19_005.xad

Created: 7/19/2012 2:20:48 PM
Modified: 7/19/2012 3:03:06 PM

Electrophoresis Assay Details

General Analysis Settings

Number of Available Sample and Ladder Wells (Max.) : 12
Minimum Visible Range [s] : 32
Maximum Visible Range [s] : 138
Start Analysis Time Range [s] : 33
End Analysis Time Range [s] : 137.5
Ladder Concentration [pg/μl] : 1950
Uses Standard Area for Ladder Fragments
Lower Marker Concentration [pg/μl] : 125
Upper Marker Concentration [pg/μl] : 75
Used Upper Marker for Quantitation
Standard Curve Fit is Point to Point
Show Data Aligned to Lower and Upper Marker

Integrator Settings

Integration Start Time [s] : 33.05
Integration End Time [s] : 137
Slope Threshold : 0.8
Height Threshold [FU] : 5
Area Threshold : 0.1
Width Threshold [s] : 0.6
Baseline Plateau [s] : 0.5

Filter Settings

Filter Width [s] : 0.5
Polynomial Order : 4

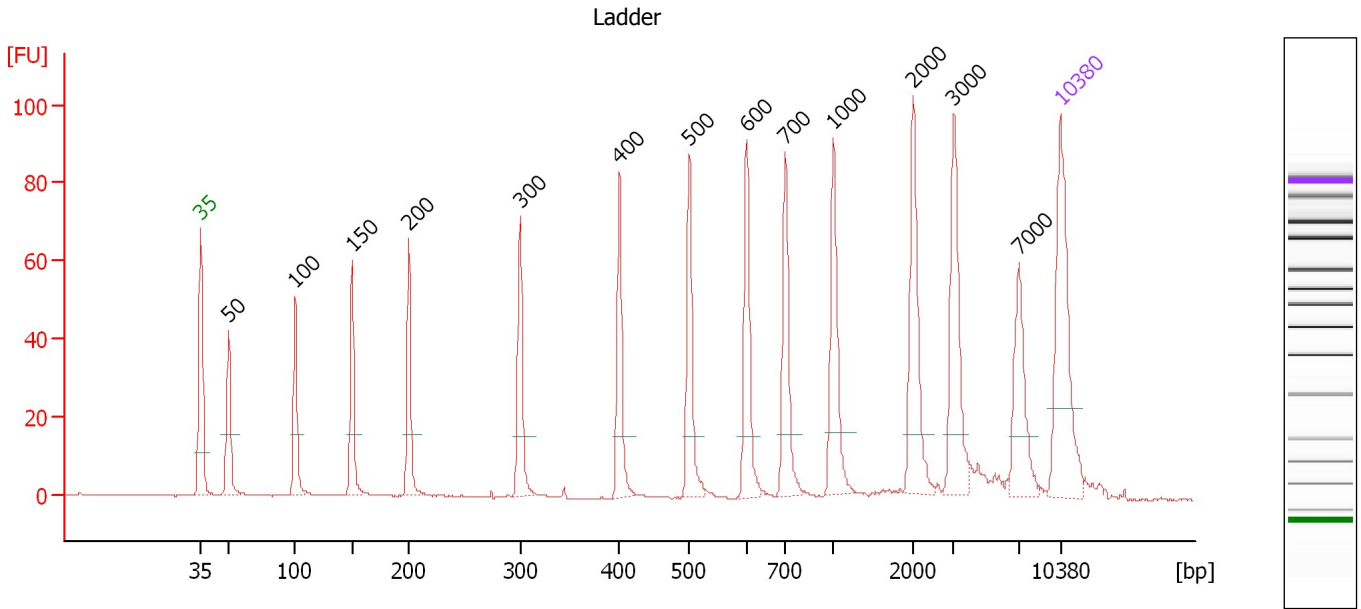
Ladder

Ladder Peak	Size	Area
1	35	160
2	50	210
3	100	208
4	150	221
5	200	242
6	300	270
7	400	305
8	500	306
9	600	336
10	700	321
11	1000	366
12	2000	413
13	3000	411
14	7000	400
15	10380	214

Assay Class: High Sensitivity DNA Assay
 Data Path: C:\...ents and Settings\Bioanalyzer\2012-07-19\2012-07-19_005.xad

Created: 7/19/2012 2:20:48 PM
 Modified: 7/19/2012 3:03:06 PM

Electropherogram Summary



Overall Results for Ladder

Noise: 0.2

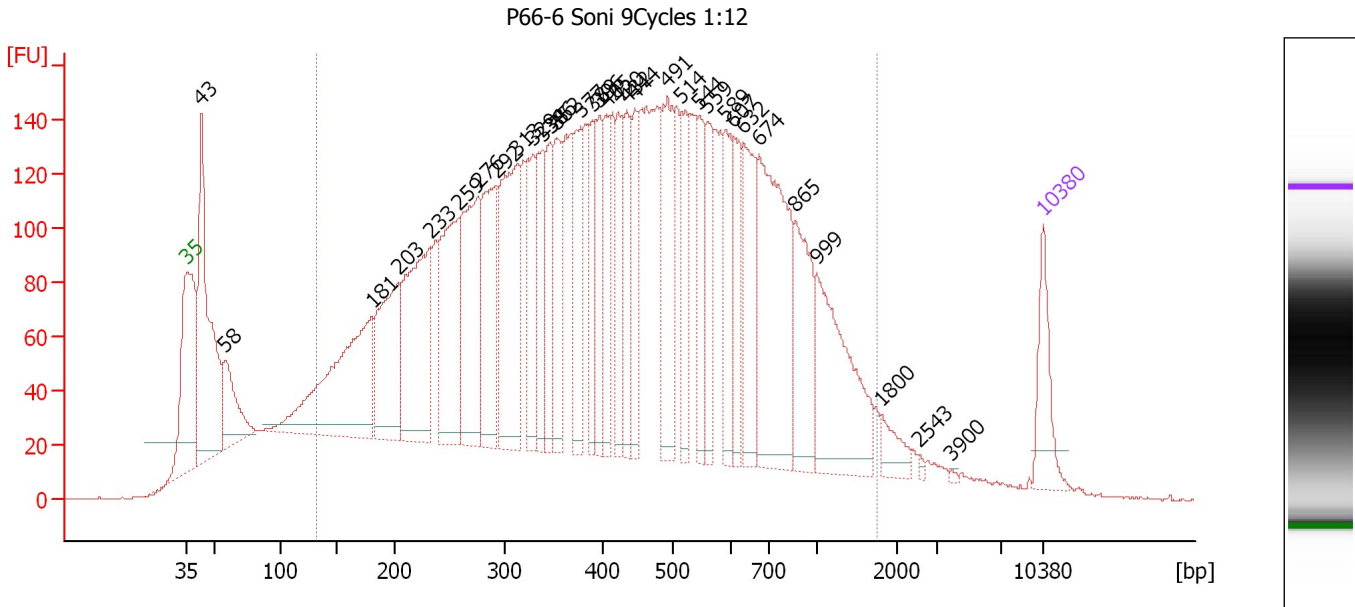
Peak table for Ladder

Peak	Size [bp]	Conc. [pg/µl]	Molarity [pmol/l]	Observations
1	35	125.00	5,411.3	Lower Marker
2	50	150.00	4,545.5	Ladder Peak
3	100	150.00	2,272.7	Ladder Peak
4	150	150.00	1,515.2	Ladder Peak
5	200	150.00	1,136.4	Ladder Peak
6	300	150.00	757.6	Ladder Peak
7	400	150.00	568.2	Ladder Peak
8	500	150.00	454.5	Ladder Peak
9	600	150.00	378.8	Ladder Peak
10	700	150.00	324.7	Ladder Peak
11	1,000	150.00	227.3	Ladder Peak
12	2,000	150.00	113.6	Ladder Peak
13	3,000	150.00	75.8	Ladder Peak
14	7,000	150.00	32.5	Ladder Peak
15	10,380	75.00	10.9	Upper Marker

Assay Class: High Sensitivity DNA Assay
 Data Path: C:\...ents and Settings\Bioanalyzer\2012-07-19\2012-07-19_005.xad

Created: 7/19/2012 2:20:48 PM
 Modified: 7/19/2012 3:03:06 PM

Electropherogram Summary Continued ...



Overall Results for sample 1 : P66-6 Soni 9Cycles 1:12

Number of peaks found: 33 Corr. Area 1: 6,943.9
 Noise: 0.3

Peak table for sample 1 : P66-6 Soni 9Cycles 1:12

Peak	Size [bp]	Conc. [pg/μl]	Molarity [pmol/l]	Observations
1	35	125.00	5,411.3	Lower Marker
2	43	551.98	19,403.4	
3	58	162.93	4,220.6	
4	181	487.64	4,088.8	
5	203	284.41	2,118.0	
6	233	382.10	2,487.5	
7	259	313.73	1,834.3	
8	276	307.14	1,686.5	
9	292	258.01	1,337.6	
10	313	347.73	1,684.0	
11	329	155.89	719.0	
12	338	155.64	697.2	
13	346	121.85	533.9	
14	352	139.65	600.7	
15	377	145.52	585.6	
16	389	119.52	465.6	
17	396	110.67	423.5	
18	405	110.14	412.1	
19	420	126.15	454.8	
20	432	116.90	409.5	
21	444	108.45	370.1	
22	491	214.47	662.2	
23	514	118.35	349.0	
24	544	104.04	290.0	
25	559	114.28	309.6	
26	589	120.19	309.2	

Assay Class: High Sensitivity DNA Assay
 Data Path: C:\...ents and Settings\Bioanalyzer\2012-07-19\2012-07-19_005.xad

Created: 7/19/2012 2:20:48 PM
 Modified: 7/19/2012 3:03:06 PM

Electropherogram Summary Continued ...

... Peak table for sample 1 : P66-6 Soni 9Cycles 1:12

Peak	Size [bp]	Conc. [pg/μl]	Molarity [pmol/l]	Observations
27	607	103.19	257.5	
28	632	169.57	406.3	
29	674	395.61	889.2	
30	865	160.92	281.8	
31	999	245.95	373.1	
32	1,800	36.33	30.6	
33	2,543	3.99	2.4	
34	3,900	2.33	0.9	
35	10,380	75.00	10.9	Upper Marker

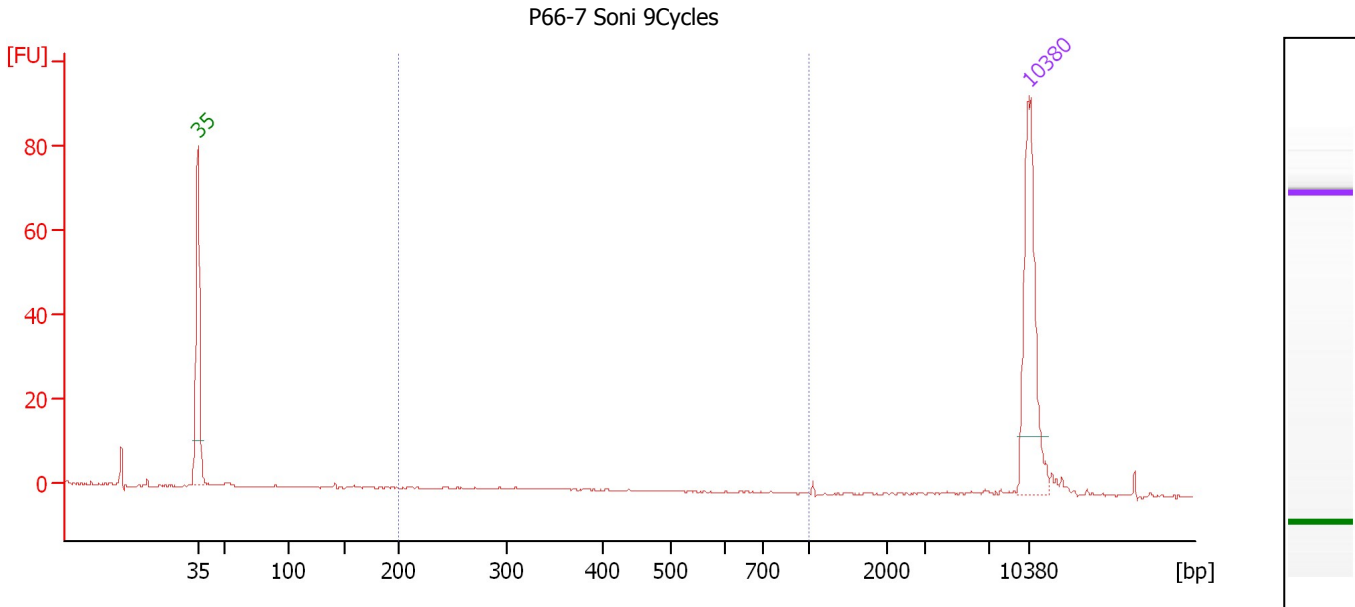
Region table for sample 1 : P66-6 Soni 9Cycles 1:12

From [bp]	To [bp]	Average Size [bp]	Molarity [pmol/l]	Conc. [pg/μl]	Corr. Area	% of Total	Size distribution in CV [%]	Color
131	1,756	481	38,708.7	8,263.10	6,943.9	86	57.9	

Assay Class: High Sensitivity DNA Assay
 Data Path: C:\...ents and Settings\Bioanalyzer\2012-07-19\2012-07-19_005.xad

Created: 7/19/2012 2:20:48 PM
 Modified: 7/19/2012 3:03:06 PM

Electropherogram Summary Continued ...



Overall Results for sample 2 : P66-7 Soni 9Cycles

Number of peaks found: 0 Corr. Area 1: 0.5
 Noise: 0.1

Peak table for sample 2 : P66-7 Soni 9Cycles

Peak	Size [bp]	Conc. [pg/μl]	Molarity [pmol/l]	Observations
1	35	125.00	5,411.3	Lower Marker
2	10,380	75.00	10.9	Upper Marker

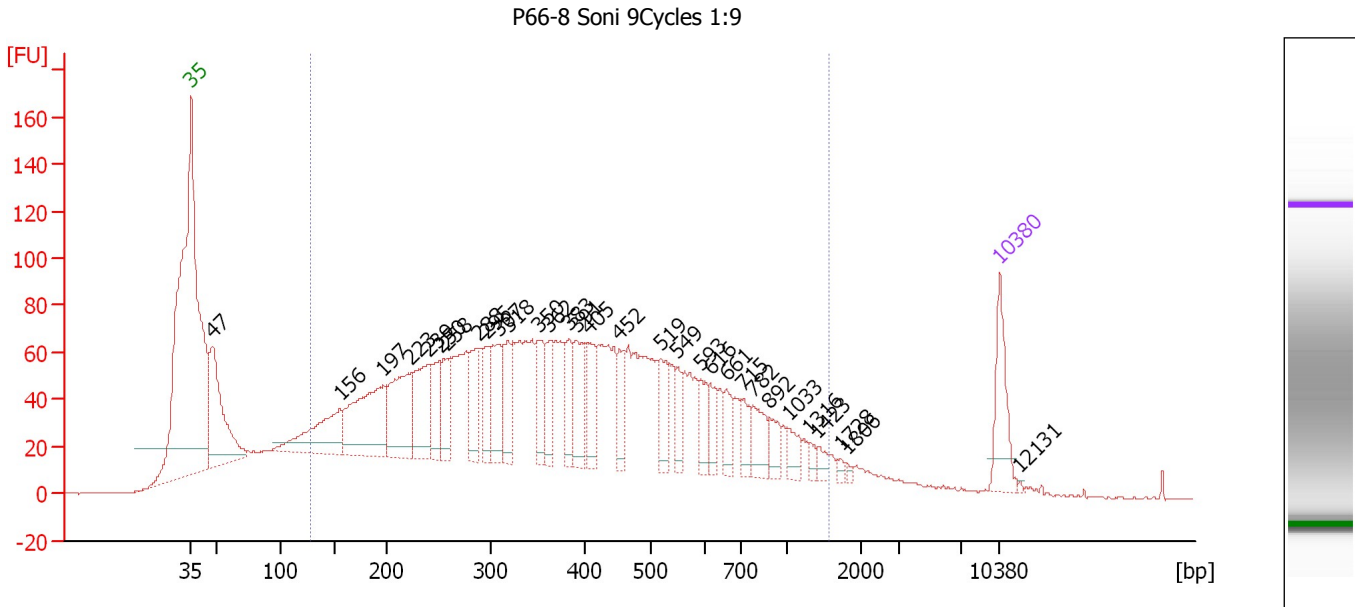
Region table for sample 2 : P66-7 Soni 9Cycles

From [bp]	To [bp]	Average Size [bp]	Molarity [pmol/l]	Conc. [pg/μl]	Corr. Area	% of Total	Size distribution in CV [%]	Color
200	1,000	358	2.7	0.58	0.5	3	26.8	Blue

Assay Class: High Sensitivity DNA Assay
 Data Path: C:\...ents and Settings\Bioanalyzer\2012-07-19\2012-07-19_005.xad

Created: 7/19/2012 2:20:48 PM
 Modified: 7/19/2012 3:03:06 PM

Electropherogram Summary Continued ...



Overall Results for sample 3 : P66-8 Soni 9Cycles 1:9

Number of peaks found: 31 Corr. Area 1: 3,191.2
 Noise: 0.2

Peak table for sample 3 : P66-8 Soni 9Cycles 1:9

Peak	Size [bp]	Conc. [pg/μl]	Molarity [pmol/l]	Observations
1	35	125.00	5,411.3	Lower Marker
2	47	306.46	9,823.1	
3	156	181.82	1,766.2	
4	197	264.63	2,039.4	
5	223	193.88	1,320.3	
6	239	155.07	981.9	
7	250	82.78	500.7	
8	258	84.75	498.5	
9	288	91.96	484.4	
10	295	63.94	328.1	
11	307	102.18	504.8	
12	318	87.01	414.4	
13	350	83.19	360.0	
14	362	63.19	264.8	
15	383	69.14	273.3	
16	391	93.54	362.2	
17	405	74.09	277.4	
18	452	57.14	191.7	
19	519	69.36	202.4	
20	549	38.35	105.9	
21	593	46.94	119.9	
22	616	39.76	97.8	
23	661	41.64	95.5	
24	715	37.42	79.3	
25	782	53.71	104.0	
26	892	32.83	55.7	

Assay Class: High Sensitivity DNA Assay
 Data Path: C:\...ents and Settings\Bioanalyzer\2012-07-19\2012-07-19_005.xad


Created: 7/19/2012 2:20:48 PM
 Modified: 7/19/2012 3:03:06 PM

Electropherogram Summary Continued ...

... Peak table for sample 3 : P66-8 Soni 9Cycles 1:9

Peak	Size [bp]	Conc. [pg/μl]	Molarity [pmol/l]	Observations
27	1,033	29.12	42.7	
28	1,316	11.38	13.1	
29	1,423	15.39	16.4	
30	1,728	5.67	5.0	
31	1,806	4.53	3.8	
32	10,380	75.00	10.9	Upper Marker
33	12,131	0.00	0.0	

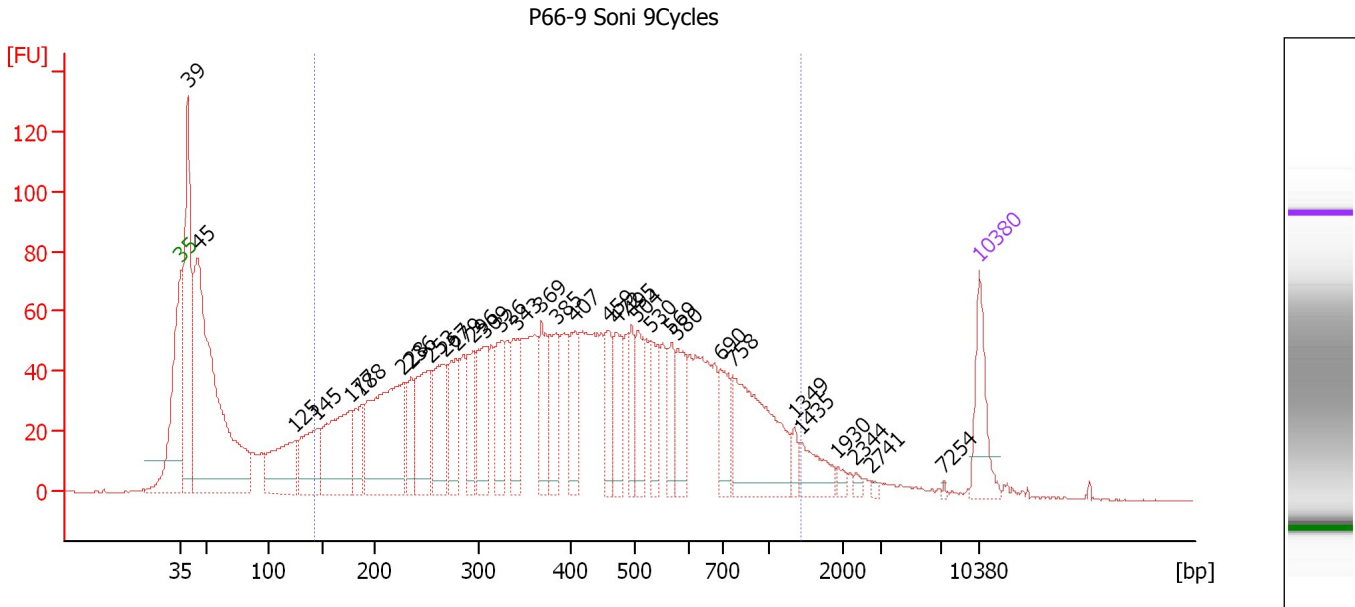
Region table for sample 3 : P66-8 Soni 9Cycles 1:9

From [bp]	To [bp]	Average Size [bp]	Molarity [pmol/l]	Conc. [pg/μl]	Corr. Area	% of Total	Size distribution in CV [%]	Color
128	1,565	429	22,685.9	4,402.86	3,191.2	84	57.0	

Assay Class: High Sensitivity DNA Assay
 Data Path: C:\...ents and Settings\Bioanalyzer\2012-07-19\2012-07-19_005.xad

Created: 7/19/2012 2:20:48 PM
 Modified: 7/19/2012 3:03:06 PM

Electropherogram Summary Continued ...



Overall Results for sample 4 : P66-9 Soni 9Cycles

Number of peaks found: 33 Corr. Area 1: 2,528.2
 Noise: 0.2

Peak table for sample 4 : P66-9 Soni 9Cycles

Peak	Size [bp]	Conc. [pg/µl]	Molarity [pmol/l]	Observations
1	35	125.00	5,411.3	Lower Marker
2	39	483.63	18,921.2	
3	45	962.54	32,678.1	
4	125	182.46	2,212.1	
5	145	151.17	1,578.5	
6	177	243.59	2,090.5	
7	188	91.64	739.6	
8	228	368.74	2,453.3	
9	236	79.19	508.4	
10	253	165.35	988.3	
11	267	153.05	867.2	
12	279	116.44	632.9	
13	296	95.65	490.0	
14	309	135.80	666.9	
15	326	107.09	497.9	
16	343	93.71	413.6	
17	369	103.37	424.8	
18	385	108.86	428.5	
19	407	85.34	317.4	
20	459	77.48	255.6	
21	472	94.30	302.5	
22	495	61.75	188.9	
23	504	73.77	221.6	
24	530	63.16	180.5	
25	569	57.84	154.0	
26	580	77.15	201.5	

Assay Class: High Sensitivity DNA Assay
 Data Path: C:\...ents and Settings\Bioanalyzer\2012-07-19\2012-07-19_005.xad

Created: 7/19/2012 2:20:48 PM
 Modified: 7/19/2012 3:03:06 PM

Electropherogram Summary Continued ...

... Peak table for sample 4 : P66-9 Soni 9Cycles

Peak	Size [bp]	Conc. [pg/μl]	Molarity [pmol/l]	Observations
27	690	74.07	162.7	
28	758	246.90	493.4	
29	1,349	15.97	17.9	
30	1,435	53.92	56.9	
31	1,930	9.66	7.6	
32	2,344	6.71	4.3	
33	2,741	4.21	2.3	
34	7,254	2.15	0.5	
35	10,380	75.00	10.9	Upper Marker

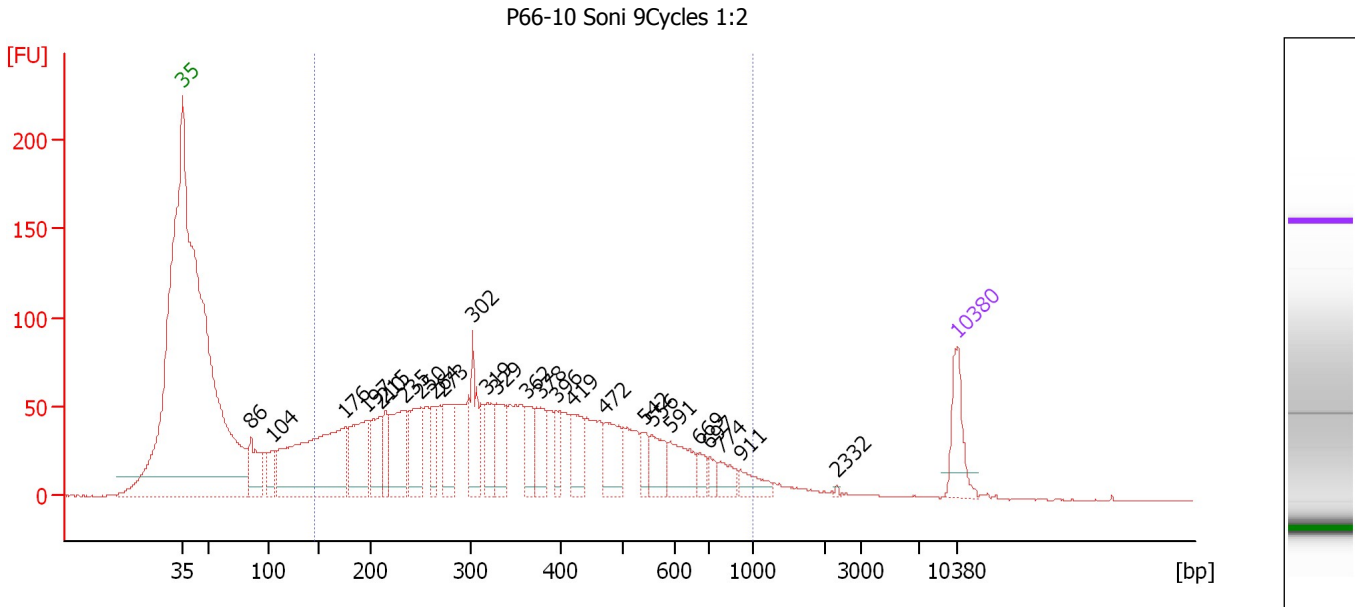
Region table for sample 4 : P66-9 Soni 9Cycles

From [bp]	To [bp]	Average Size [bp]	Molarity [pmol/l]	Conc. [pg/μl]	Corr. Area	% of Total	Size distribution in CV [%]	Color
142	1,435	452	18,841.6	3,999.46	2,528.2	73	51.6	

Assay Class: High Sensitivity DNA Assay
 Data Path: C:\...ents and Settings\Bioanalyzer\2012-07-19\2012-07-19_005.xad

Created: 7/19/2012 2:20:48 PM
 Modified: 7/19/2012 3:03:06 PM

Electropherogram Summary Continued ...



Overall Results for sample 5 : P66-10 Soni 9Cycles 1:2

Number of peaks found: 26 Corr. Area 1: 2,340.4
 Noise: 0.2

Peak table for sample 5 : P66-10 Soni 9Cycles 1:2

Peak	Size [bp]	Conc. [pg/μl]	Molarity [pmol/l]	Observations
1	35	125.00	5,411.3	Lower Marker
2	86	134.72	2,373.4	
3	104	64.00	929.0	
4	176	576.45	4,972.5	
5	197	200.09	1,542.2	
6	210	116.62	842.2	
7	215	72.27	509.0	
8	235	170.82	1,102.5	
9	250	134.14	812.5	
10	264	69.05	395.6	
11	273	122.66	680.8	
12	302	125.53	628.9	
13	319	86.69	412.4	
14	329	107.23	493.4	
15	362	79.68	333.4	
16	378	91.26	365.6	
17	396	48.03	183.7	
18	419	92.67	335.1	
19	472	107.92	346.2	
20	542	37.64	105.1	
21	556	72.20	196.8	
22	591	93.55	239.9	
23	669	27.39	62.0	
24	697	23.10	50.2	
25	774	39.32	76.9	
26	911	37.75	62.8	

Assay Class: High Sensitivity DNA Assay
 Data Path: C:\...ents and Settings\Bioanalyzer\2012-07-19\2012-07-19_005.xad


Created: 7/19/2012 2:20:48 PM
 Modified: 7/19/2012 3:03:06 PM

Electropherogram Summary Continued ...

... Peak table for sample 5 : P66-10 Soni 9Cycles 1:2

Peak	Size [bp]	Conc. [pg/μl]	Molarity [pmol/l]	Observations
27	2,332	2.00	1.3	
28	10,380	75.00	10.9	Upper Marker

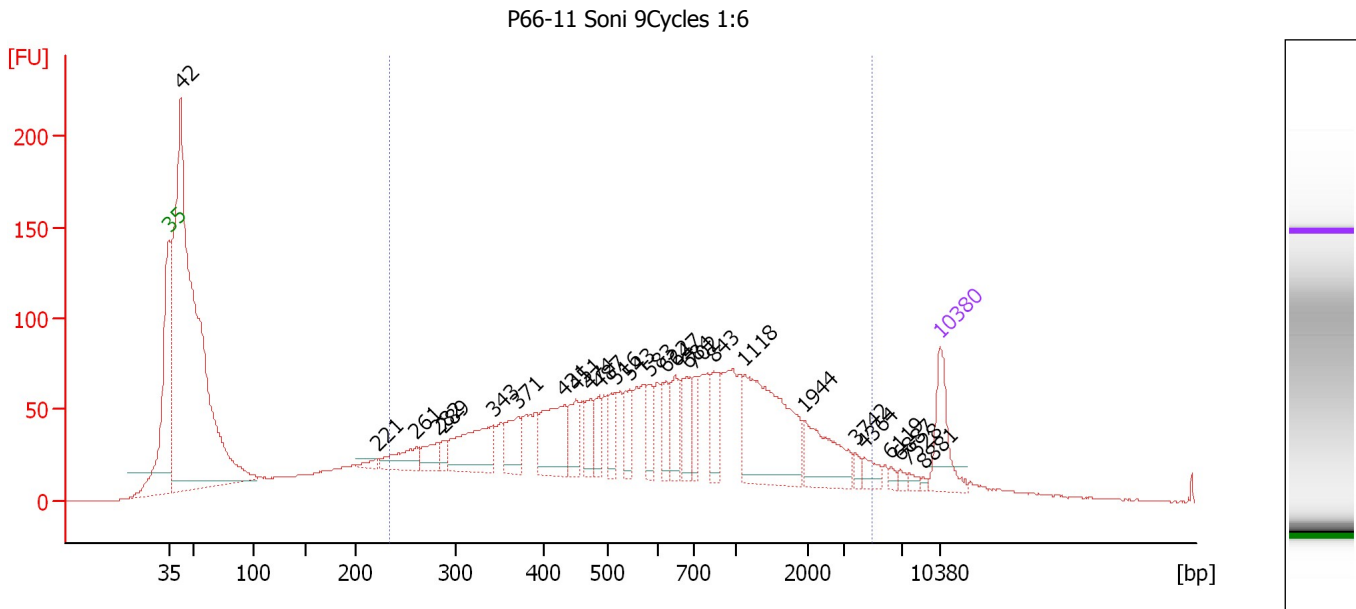
Region table for sample 5 : P66-10 Soni 9Cycles 1:2

From [bp]	To [bp]	Average Size [bp]	Molarity [pmol/l]	Conc. [pg/μl]	Corr. Area	% of Total	Size distribution in CV [%]	Color
145	1,000	372	16,616.7	3,133.06	2,340.4	85	44.0	

Assay Class: High Sensitivity DNA Assay
 Data Path: C:\...ents and Settings\Bioanalyzer\2012-07-19\2012-07-19_005.xad

Created: 7/19/2012 2:20:48 PM
 Modified: 7/19/2012 3:03:06 PM

Electropherogram Summary Continued ...



Overall Results for sample 6 : P66-11 Soni 9Cycles 1:6

Number of peaks found: 27 Corr. Area 1: 2,567.2
 Noise: 0.2

Peak table for sample 6 : P66-11 Soni 9Cycles 1:6

Peak	Size [bp]	Conc. [pg/μl]	Molarity [pmol/l]	Observations
1	35	125.00	5,411.3	Lower Marker
2	42	2,054.18	74,534.5	
3	221	14.11	96.7	
4	261	68.48	398.2	
5	282	51.62	277.5	
6	289	20.63	108.2	
7	343	160.67	710.5	
8	371	78.94	322.6	
9	431	144.58	508.4	
10	451	62.68	210.8	
11	474	46.79	149.7	
12	487	48.08	149.5	
13	516	55.34	162.4	
14	543	55.39	154.5	
15	583	43.60	113.4	
16	622	43.89	106.9	
17	647	62.15	145.6	
18	684	60.06	133.1	
19	702	44.09	95.2	
20	843	62.07	111.5	
21	1,118	268.26	363.6	
22	1,944	103.42	80.6	
23	3,742	10.84	4.4	
24	4,364	21.49	7.5	
25	6,119	7.47	1.8	
26	6,887	6.98	1.5	

Assay Class: High Sensitivity DNA Assay
 Data Path: C:\...ents and Settings\Bioanalyzer\2012-07-19\2012-07-19_005.xad

Created: 7/19/2012 2:20:48 PM
 Modified: 7/19/2012 3:03:06 PM

Electropherogram Summary Continued ...

... Peak table for sample 6 : P66-11 Soni 9Cycles 1:6

Peak	Size [bp]	Conc. [pg/μl]	Molarity [pmol/l]	Observations
27	7,528	7.03	1.4	
28	8,881	4.07	0.7	
29	10,380	75.00	10.9	Upper Marker

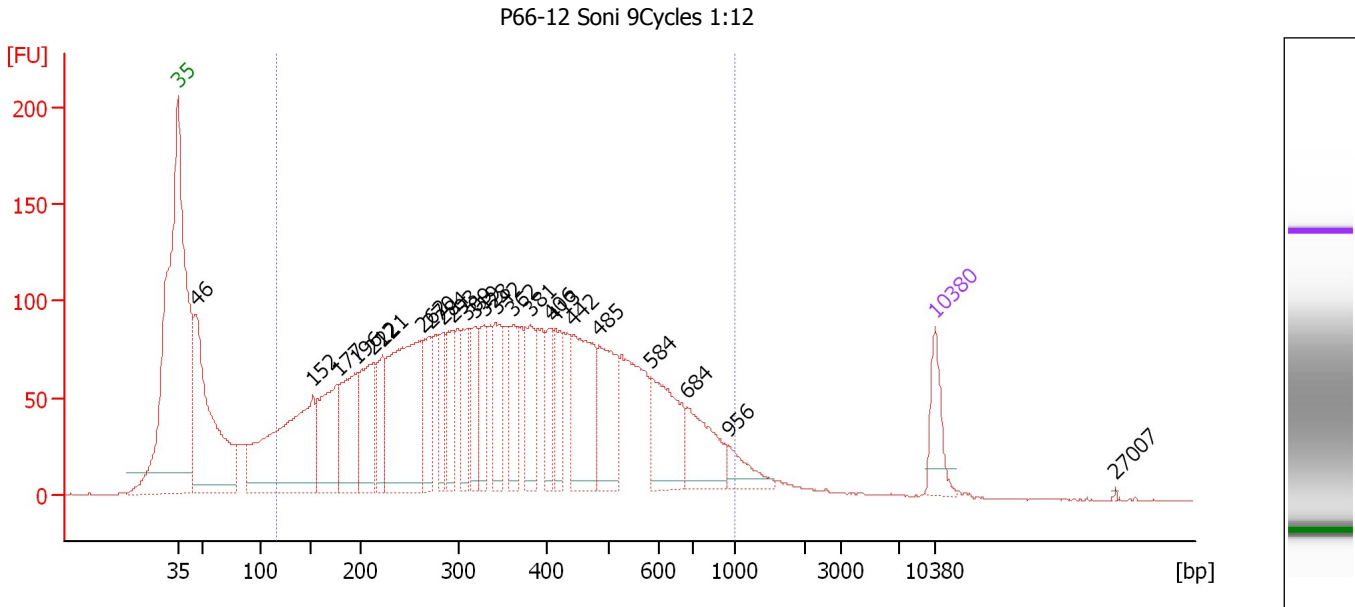
Region table for sample 6 : P66-11 Soni 9Cycles 1:6

From [bp]	To [bp]	Average Size [bp]	Molarity [pmol/l]	Conc. [pg/μl]	Corr. Area	% of Total	Size distribution in CV [%]	Color
235	4,854	880	8,498.9	2,767.86	2,567.2	59	86.7	

Assay Class: High Sensitivity DNA Assay
 Data Path: C:\...ents and Settings\Bioanalyzer\2012-07-19\2012-07-19_005.xad

Created: 7/19/2012 2:20:48 PM
 Modified: 7/19/2012 3:03:06 PM

Electropherogram Summary Continued ...



Overall Results for sample 7 : P66-12 Soni 9Cycles 1:12

Number of peaks found: 24 Corr. Area 1: 4,080.1
 Noise: 0.3

Peak table for sample 7 : P66-12 Soni 9Cycles 1:12

Peak	Size [bp]	Conc. [pg/μl]	Molarity [pmol/l]	Observations
1	35	125.00	5,411.3	Lower Marker
2	46	719.33	23,624.6	
3	152	669.32	6,693.3	
4	177	293.70	2,518.7	
5	196	270.38	2,090.6	
6	212	236.29	1,687.2	
7	221	138.80	949.8	
8	262	549.27	3,181.0	
9	270	149.59	840.2	
10	284	116.25	620.4	
11	293	115.11	596.1	
12	309	128.04	628.3	
13	319	126.14	600.0	
14	328	124.22	573.3	
15	342	151.74	672.8	
16	362	115.07	481.8	
17	381	143.31	570.3	
18	406	89.90	335.8	
19	413	113.32	415.3	
20	442	278.74	955.4	
21	485	219.03	683.7	
22	584	212.06	550.0	
23	684	158.75	351.9	
24	956	57.22	90.7	
25	10,380	75.00	10.9	Upper Marker
26	27,007	0.00	0.0	

Assay Class: High Sensitivity DNA Assay
Data Path: C:\...ents and Settings\Bioanalyzer\2012-07-19\2012-07-19_005.xad

Created: 7/19/2012 2:20:48 PM
Modified: 7/19/2012 3:03:06 PM

Electropherogram Summary Continued ...

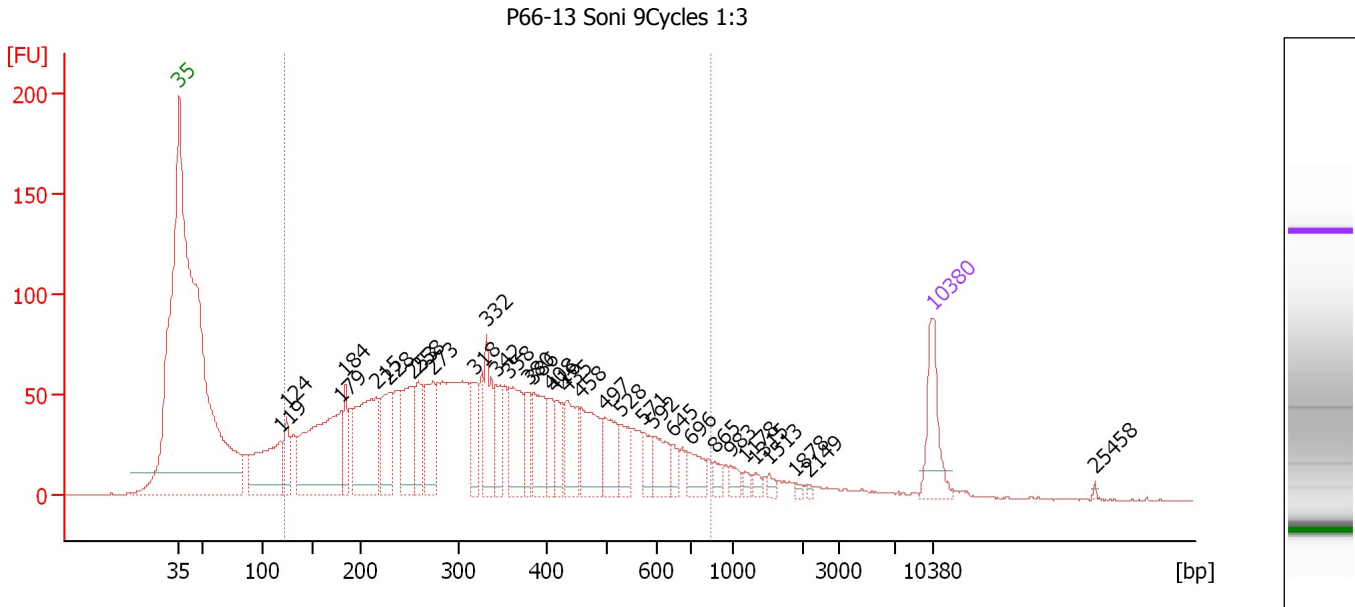
... Region table for sample 7 : P66-12 Soni 9Cycles 1:12

From [bp]	To [bp]	Average Size [bp]	Molarity [pmol/l]	Conc. [pg/μl]	Corr. Area	% of Total	Size distribution in CV [%]	Color
115	1,000	377	29,987.8	5,427.29	4,080.1	85	45.2	■

Assay Class: High Sensitivity DNA Assay
 Data Path: C:\...ents and Settings\Bioanalyzer\2012-07-19\2012-07-19_005.xad

Created: 7/19/2012 2:20:48 PM
 Modified: 7/19/2012 3:03:06 PM

Electropherogram Summary Continued ...



Overall Results for sample 8 : P66-13 Soni 9Cycles 1:3

Number of peaks found: 33 Corr. Area 1: 2,498.1
 Noise: 0.3

Peak table for sample 8 : P66-13 Soni 9Cycles 1:3

Peak	Size [bp]	Conc. [pg/μl]	Molarity [pmol/l]	Observations
1	35	125.00	5,411.3	Lower Marker
2	119	213.69	2,730.4	
3	124	71.56	871.3	
4	179	370.09	3,131.0	
5	184	74.05	610.0	
6	215	259.66	1,826.8	
7	228	125.08	829.5	
8	253	157.93	945.7	
9	258	77.89	456.6	
10	273	123.79	686.5	
11	318	73.51	350.5	
12	332	108.55	495.6	
13	342	63.13	279.4	
14	358	125.57	531.1	
15	380	54.29	216.6	
16	386	104.32	409.7	
17	408	45.04	167.3	
18	416	43.61	159.0	
19	435	92.76	323.3	
20	458	116.76	386.0	
21	497	76.04	232.0	
22	528	47.05	135.1	
23	571	33.48	88.9	
24	592	53.79	137.7	
25	645	21.69	51.0	
26	696	44.58	97.1	

Assay Class: High Sensitivity DNA Assay
 Data Path: C:\...ents and Settings\Bioanalyzer\2012-07-19\2012-07-19_005.xad


Created: 7/19/2012 2:20:48 PM
 Modified: 7/19/2012 3:03:06 PM

Electropherogram Summary Continued ...

... Peak table for sample 8 : P66-13 Soni 9Cycles 1:3

Peak	Size [bp]	Conc. [pg/μl]	Molarity [pmol/l]	Observations
27	865	17.79	31.2	
28	983	16.30	25.1	
29	1,178	9.80	12.6	
30	1,315	9.72	11.2	
31	1,513	9.60	9.6	
32	1,878	4.51	3.6	
33	2,149	3.21	2.3	
34	10,380	75.00	10.9	Upper Marker
35	25,458	0.00	0.0	

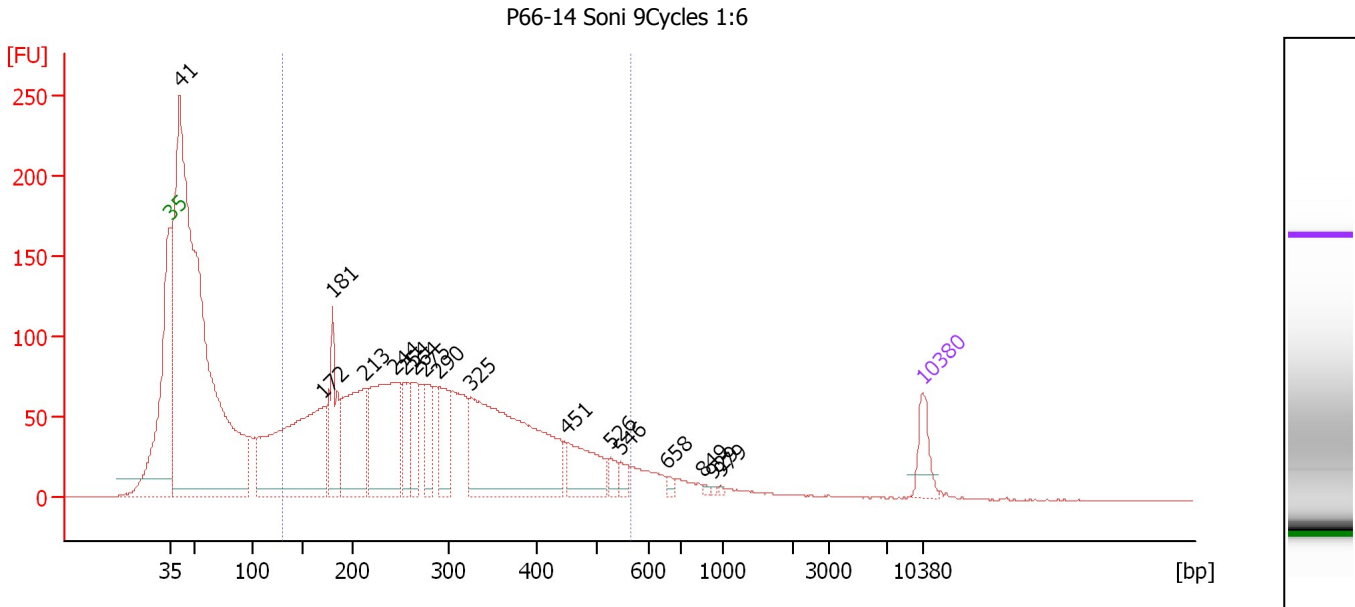
Region table for sample 8 : P66-13 Soni 9Cycles 1:3

From [bp]	To [bp]	Average Size [bp]	Molarity [pmol/l]	Conc. [pg/μl]	Corr. Area	% of Total	Size distribution in CV [%]	Color
122	843	349	18,013.9	3,136.81	2,498.1	88	42.3	

Assay Class: High Sensitivity DNA Assay
 Data Path: C:\...ents and Settings\Bioanalyzer\2012-07-19\2012-07-19_005.xad

Created: 7/19/2012 2:20:48 PM
 Modified: 7/19/2012 3:03:06 PM

Electropherogram Summary Continued ...



Overall Results for sample 9 : P66-14 Soni 9Cycles 1:6

Number of peaks found: 17 Corr. Area 1: 2,632.4
 Noise: 0.2

Peak table for sample 9 : P66-14 Soni 9Cycles 1:6

Peak	Size [bp]	Conc. [pg/μl]	Molarity [pmol/l]	Observations
1	35	125.00	5,411.3	Lower Marker
2	41	4,246.79	155,978.3	
3	172	1,063.16	9,389.6	
4	181	283.67	2,378.5	
5	213	495.64	3,531.8	
6	244	650.58	4,035.0	
7	254	153.23	915.6	
8	264	129.16	739.9	
9	275	151.90	835.7	
10	290	212.75	1,113.1	
11	325	1,020.99	4,767.2	
12	451	208.67	700.6	
13	526	40.27	115.9	
14	546	35.13	97.6	
15	658	14.92	34.4	
16	849	7.34	13.1	
17	929	5.24	8.5	
18	979	4.97	7.7	
19	10,380	75.00	10.9	Upper Marker

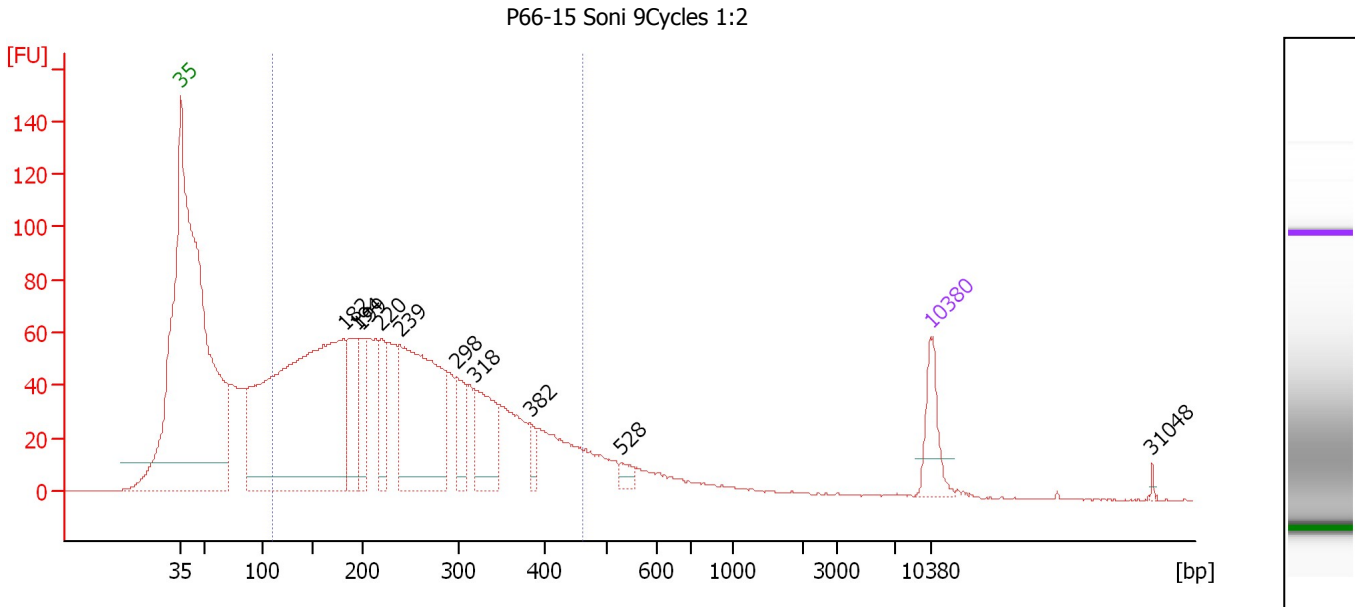
Region table for sample 9 : P66-14 Soni 9Cycles 1:6

From [bp]	To [bp]	Average Size [bp]	Molarity [pmol/l]	Conc. [pg/μl]	Corr. Area	% of Total	Size distribution in CV [%]	Color
130	568	292	30,246.9	4,825.10	2,632.4	55	35.3	Blue

Assay Class: High Sensitivity DNA Assay
 Data Path: C:\...ents and Settings\Bioanalyzer\2012-07-19\2012-07-19_005.xad

Created: 7/19/2012 2:20:48 PM
 Modified: 7/19/2012 3:03:06 PM

Electropherogram Summary Continued ...



Overall Results for sample 10 : P66-15 Soni 9Cycles 1:2

Number of peaks found: 10 Corr. Area 1: 2,029.6
 Noise: 0.2

Peak table for sample 10 : P66-15 Soni 9Cycles 1:2

Peak	Size [bp]	Conc. [pg/μl]	Molarity [pmol/l]	Observations
1	35	125.00	5,411.3	Lower Marker
2	182	1,530.70	12,776.4	
3	194	196.48	1,534.8	
4	199	120.23	916.2	
5	220	111.83	771.4	
6	239	645.12	4,092.1	
7	298	113.57	578.3	
8	318	185.32	882.4	
9	382	32.30	128.0	
10	528	23.73	68.1	
11	10,380	75.00	10.9	Upper Marker
12	31,048	0.00	0.0	

Region table for sample 10 : P66-15 Soni 9Cycles 1:2

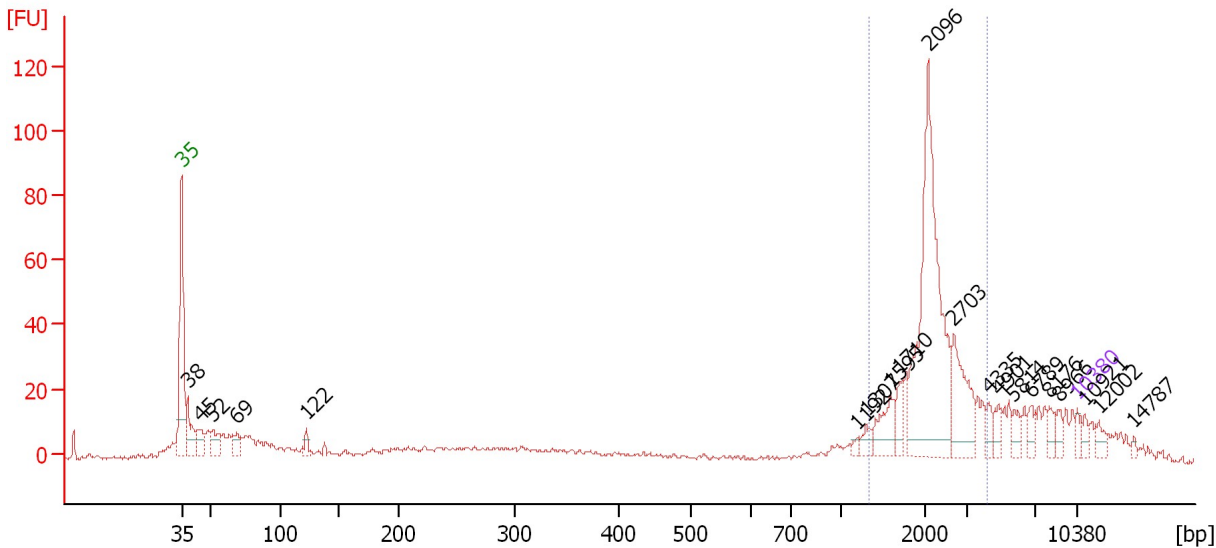
From [bp]	To [bp]	Average Size [bp]	Molarity [pmol/l]	Conc. [pg/μl]	Corr. Area	% of Total	Size distribution in CV [%]	Color
109	461	246	28,347.4	3,790.87	2,029.6	80	35.3	Blue

Assay Class: High Sensitivity DNA Assay
 Data Path: C:\...ents and Settings\Bioanalyzer\2012-07-19\2012-07-19_005.xad

Created: 7/19/2012 2:20:48 PM
 Modified: 7/19/2012 3:03:06 PM

Electropherogram Summary Continued ...

HD-469 DNA 1:2



Overall Results for sample 11 : HD-469 DNA 1:2

Number of peaks found: 20 Corr. Area 1: 324.7
 Noise: 0.7

Peak table for sample 11 : HD-469 DNA 1:2

Peak	Size [bp]	Conc. [pg/μl]	Molarity [pmol/l]	Observations
1	35	125.00	5,411.3	Lower Marker
2	38	540.52	21,526.4	
3	45	279.32	9,470.6	
4	52	322.46	9,423.8	
5	69	219.26	4,833.5	
6	122	99.80	1,237.3	
7	1,192	48.26	61.4	
8	1,307	107.69	124.9	
9	1,595	324.77	308.6	
10	1,710	175.31	155.3	
11	2,096	2,425.77	1,753.1	
12	2,703	627.73	351.9	
13	4,335	100.84	35.2	
14	4,901	112.14	34.7	
15	5,814	115.24	30.0	
16	6,789	108.43	24.2	
17	8,176	99.48	18.4	
18	8,966	97.58	16.5	
19	10,380	75.00	10.9	Upper Marker
20	10,921	0.00	0.0	
21	12,002	0.00	0.0	
22	14,787	0.00	0.0	

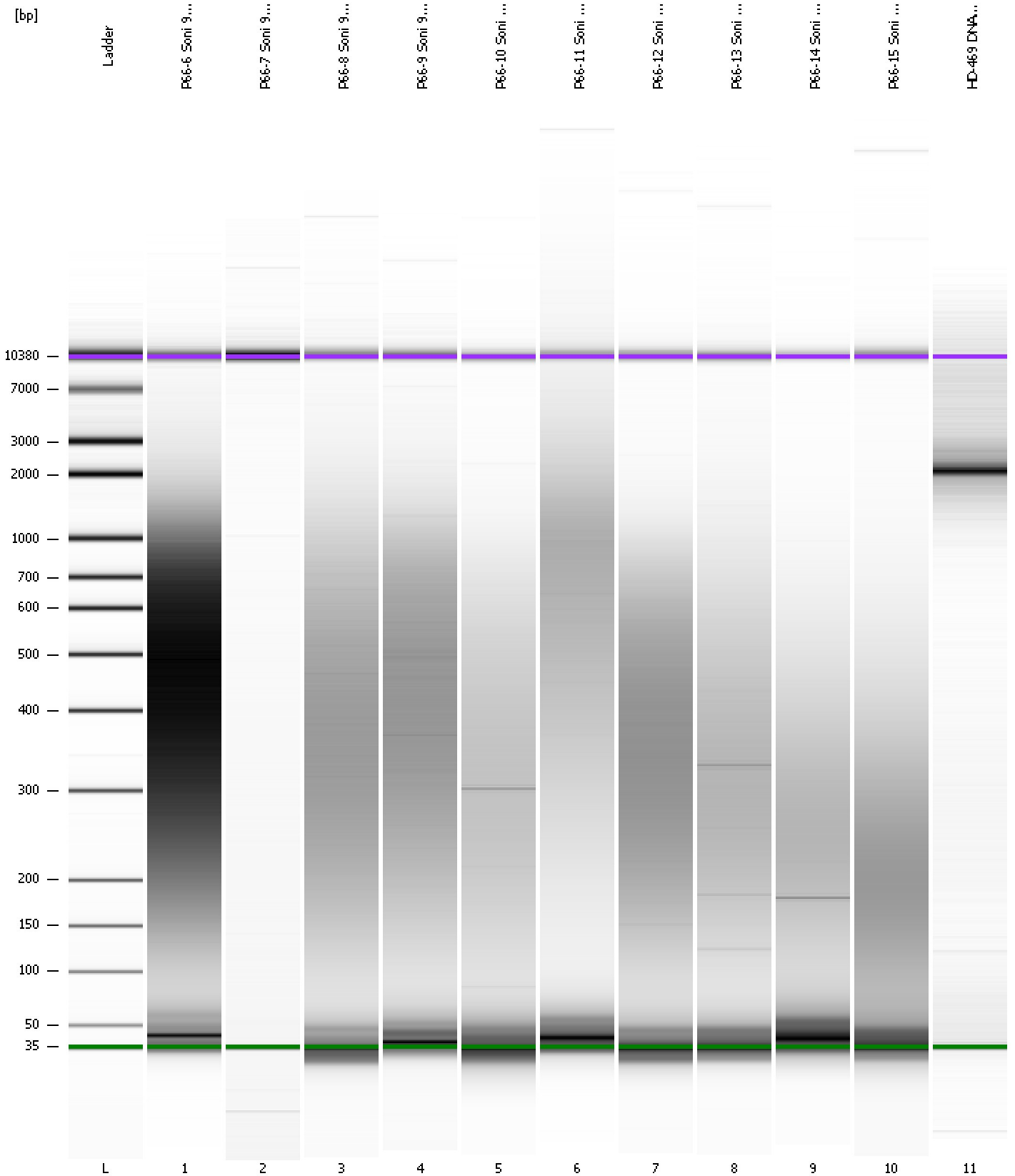
Region table for sample 11 : HD-469 DNA 1:2

From [bp]	To [bp]	Average Size [bp]	Molarity [pmol/l]	Conc. [pg/μl]	Corr. Area	% of Total	Size distribution in CV [%]	Color
1,344	4,261	2,296	2,687.8	3,889.59	324.7	65	24.8	Blue

Assay Class: High Sensitivity DNA Assay
Data Path: C:\...ents and Settings\Bioanalyzer\2012-07-19\2012-07-19_005.xad

Created: 7/19/2012 2:20:48 PM
Modified: 7/19/2012 3:03:06 PM

Gel Image



Assay Class: High Sensitivity DNA Assay
Data Path: C:\...ents and Settings\Bioanalyzer\2012-07-19\2012-07-19_005.xad

Created: 7/19/2012 2:20:48 PM
Modified: 7/19/2012 3:03:06 PM

Curves

Standard Curve

