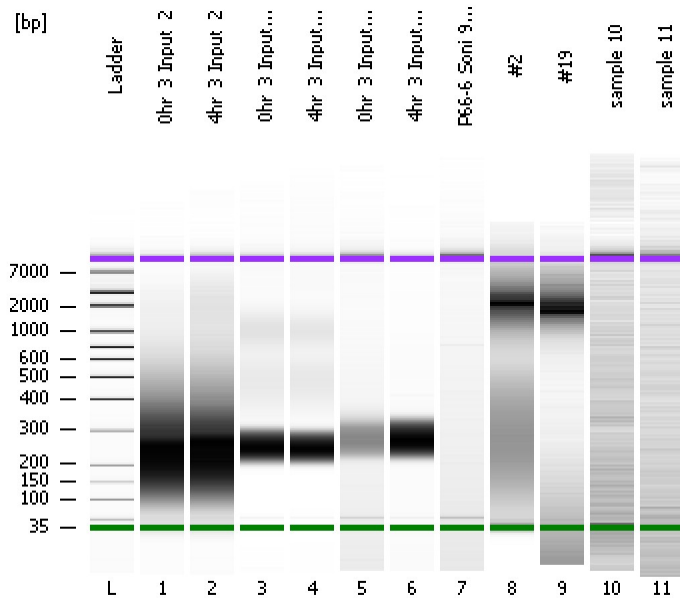


Assay Class: High Sensitivity DNA Assay
Data Path: C:\...ents and Settings\Bioanalyzer\2012-07-19\2012-07-19_006.xad

Created: 7/19/2012 3:18:27 PM
Modified: 7/19/2012 4:09:46 PM

Electrophoresis File Run Summary



Instrument Information:

Instrument Name: DE13701086 Firmware: C.01.069
Serial#: DE13701086 Type: G2938B

Assay Information:

Assay Origin Path: C:\Program Files\Agilent\2100 bioanalyzer\2100 expert\assays\dsDNA\High Sensitivity DNA.xsy
Assay Class: High Sensitivity DNA Assay
Version: 1.03
Assay Comments: Copyright © 2003-2010 Agilent Technologies

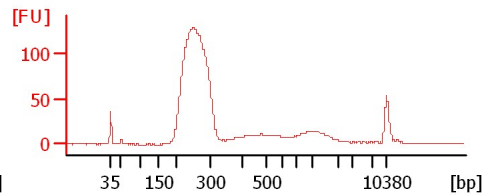
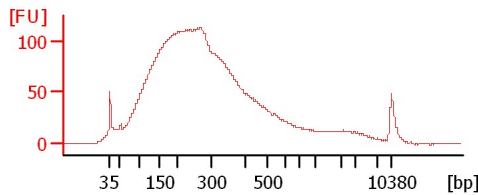
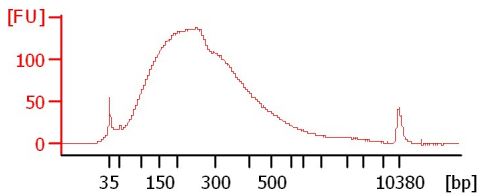
Chip Information:

Chip Lot #:
Reagent Kit Lot #:
Chip Comments:

0hr_3 Input_2

4hr_3 Input_2

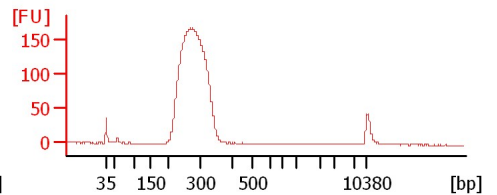
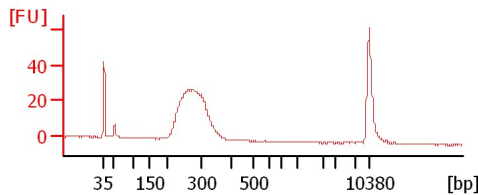
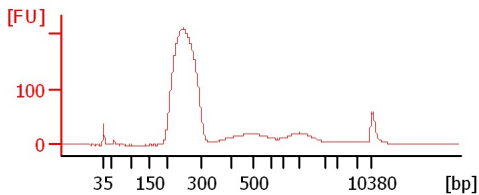
0hr_3 Input_2_Lib



4hr_3 Input_2_Lib

0hr_3 Input_1_Lib_1

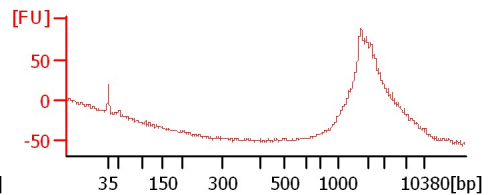
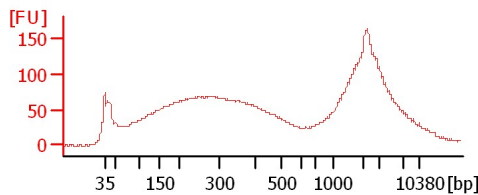
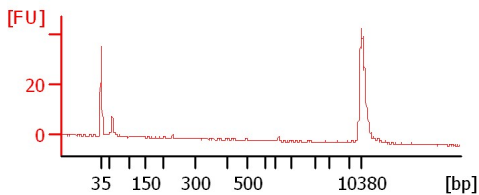
4hr_3 Input_1_Lib_1



P66-6 Soni 9+2Cycles 1:14

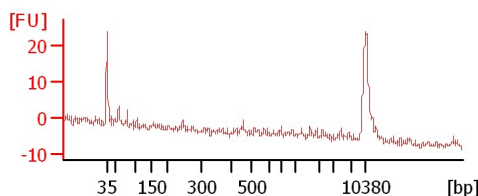
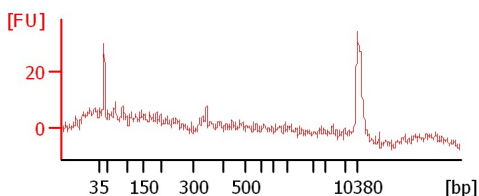
#2

#19



sample 10

sample 11



Assay Class: High Sensitivity DNA Assay
 Data Path: C:\...ents and Settings\Bioanalyzer\2012-07-19\2012-07-19_006.xad

Created: 7/19/2012 3:18:27 PM
 Modified: 7/19/2012 4:09:46 PM

Electrophoresis File Run Summary (Chip Summary)

Sample Name	Sample Comment	Rest. Digest	Status	Observation	Result Label	Result Color
0hr_3 Input_2		<input type="checkbox"/>	✓			
4hr_3 Input_2		<input type="checkbox"/>	✓			
0hr_3 Input_2_Lib		<input type="checkbox"/>	✓			
4hr_3 Input_2_Lib		<input type="checkbox"/>	✓			
0hr_3 Input_1_Lib_1		<input type="checkbox"/>	✓			
4hr_3 Input_1_Lib_1		<input type="checkbox"/>	✓			
P66-6 Soni 9+2Cycles 1:14		<input type="checkbox"/>	✓			
#2		<input type="checkbox"/>	✓			
#19		<input type="checkbox"/>	✓			
sample 10		<input type="checkbox"/>	✓			
sample 11		<input type="checkbox"/>	✓			
Ladder		<input type="checkbox"/>	✓			

Chip Lot #

Reagent Kit Lot #

Chip Comments :

Assay Class: High Sensitivity DNA Assay
Data Path: C:\...ents and Settings\Bioanalyzer\2012-07-19\2012-07-19_006.xad

Created: 7/19/2012 3:18:27 PM
Modified: 7/19/2012 4:09:46 PM

Electrophoresis Assay Details

General Analysis Settings

Number of Available Sample and Ladder Wells (Max.) : 12
Minimum Visible Range [s] : 32
Maximum Visible Range [s] : 138
Start Analysis Time Range [s] : 33
End Analysis Time Range [s] : 137.5
Ladder Concentration [pg/μl] : 1950
Uses Standard Area for Ladder Fragments
Lower Marker Concentration [pg/μl] : 125
Upper Marker Concentration [pg/μl] : 75
Used Upper Marker for Quantitation
Standard Curve Fit is Point to Point
Show Data Aligned to Lower and Upper Marker

Integrator Settings

Integration Start Time [s] : 33.05
Integration End Time [s] : 137
Slope Threshold : 0.8
Height Threshold [FU] : 5
Area Threshold : 0.1
Width Threshold [s] : 0.6
Baseline Plateau [s] : 0.5

Filter Settings

Filter Width [s] : 0.5
Polynomial Order : 4

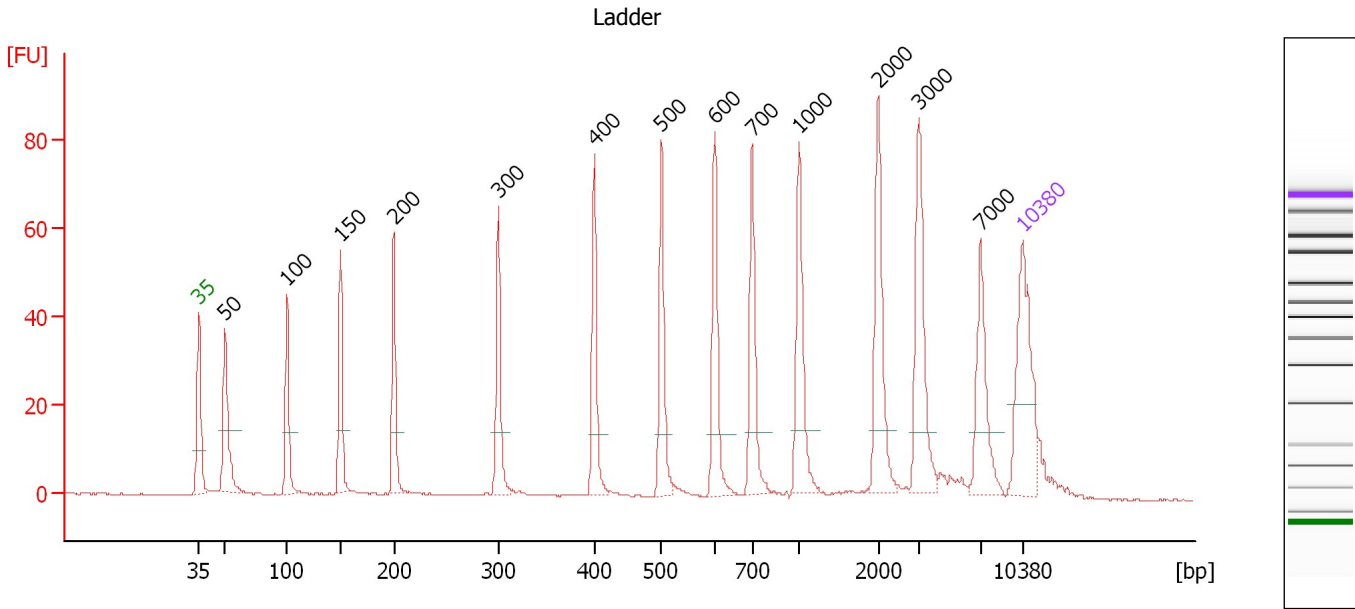
Ladder

Ladder Peak	Size	Area
1	35	160
2	50	210
3	100	208
4	150	221
5	200	242
6	300	270
7	400	305
8	500	306
9	600	336
10	700	321
11	1000	366
12	2000	413
13	3000	411
14	7000	400
15	10380	214

Assay Class: High Sensitivity DNA Assay
 Data Path: C:\...ents and Settings\Bioanalyzer\2012-07-19\2012-07-19_006.xad

Created: 7/19/2012 3:18:27 PM
 Modified: 7/19/2012 4:09:46 PM

Electropherogram Summary



Overall Results for Ladder

Noise: 0.1

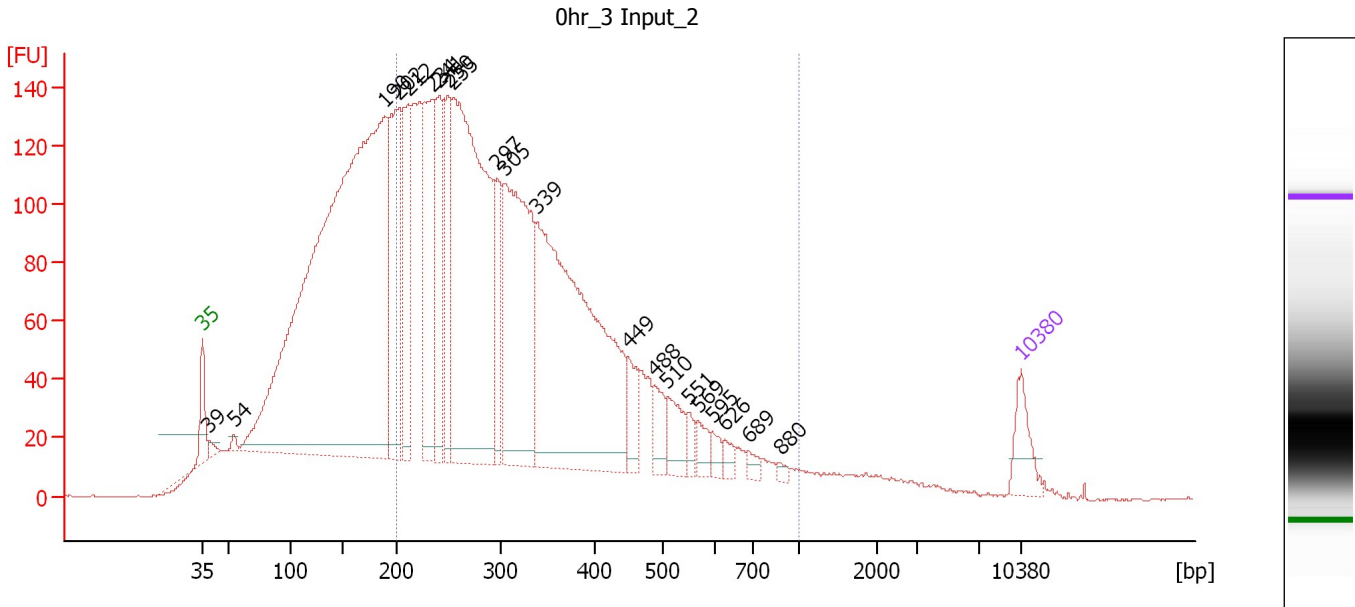
Peak table for Ladder

Peak	Size [bp]	Conc. [pg/μl]	Molarity [pmol/l]	Observations
1	35	125.00	5,411.3	Lower Marker
2	50	150.00	4,545.5	Ladder Peak
3	100	150.00	2,272.7	Ladder Peak
4	150	150.00	1,515.2	Ladder Peak
5	200	150.00	1,136.4	Ladder Peak
6	300	150.00	757.6	Ladder Peak
7	400	150.00	568.2	Ladder Peak
8	500	150.00	454.5	Ladder Peak
9	600	150.00	378.8	Ladder Peak
10	700	150.00	324.7	Ladder Peak
11	1,000	150.00	227.3	Ladder Peak
12	2,000	150.00	113.6	Ladder Peak
13	3,000	150.00	75.8	Ladder Peak
14	7,000	150.00	32.5	Ladder Peak
15	10,380	75.00	10.9	Upper Marker

Assay Class: High Sensitivity DNA Assay
 Data Path: C:\...ents and Settings\Bioanalyzer\2012-07-19\2012-07-19_006.xad

Created: 7/19/2012 3:18:27 PM
 Modified: 7/19/2012 4:09:46 PM

Electropherogram Summary Continued ...



Overall Results for sample 1 : Ohr_3 Input_2

Number of peaks found: 21 Corr. Area 1: 3,498.8
 Noise: 0.1

Peak table for sample 1 : Ohr_3 Input_2

Peak	Size [bp]	Conc. [pg/μl]	Molarity [pmol/l]	Observations
1	35	125.00	5,411.3	Lower Marker
2	39	20.80	808.1	
3	54	16.87	469.5	
4	190	3,628.76	28,978.8	
5	202	578.43	4,341.8	
6	212	367.22	2,622.9	
7	234	485.11	3,138.1	
8	241	327.25	2,053.8	
9	250	300.54	1,824.1	
10	255	1,502.10	8,932.8	
11	297	208.63	1,064.6	
12	305	850.69	4,225.5	
13	339	1,438.92	6,428.1	
14	449	94.28	318.2	
15	488	73.46	228.0	
16	510	97.45	289.4	
17	551	35.80	98.5	
18	569	43.15	115.0	
19	595	30.18	76.9	
20	626	27.83	67.4	
21	689	21.27	46.8	
22	880	10.34	17.8	
23	10,380	75.00	10.9	Upper Marker

Assay Class: High Sensitivity DNA Assay
Data Path: C:\...ents and Settings\Bioanalyzer\2012-07-19\2012-07-19_006.xad

Created: 7/19/2012 3:18:27 PM
Modified: 7/19/2012 4:09:46 PM

Electropherogram Summary Continued ...

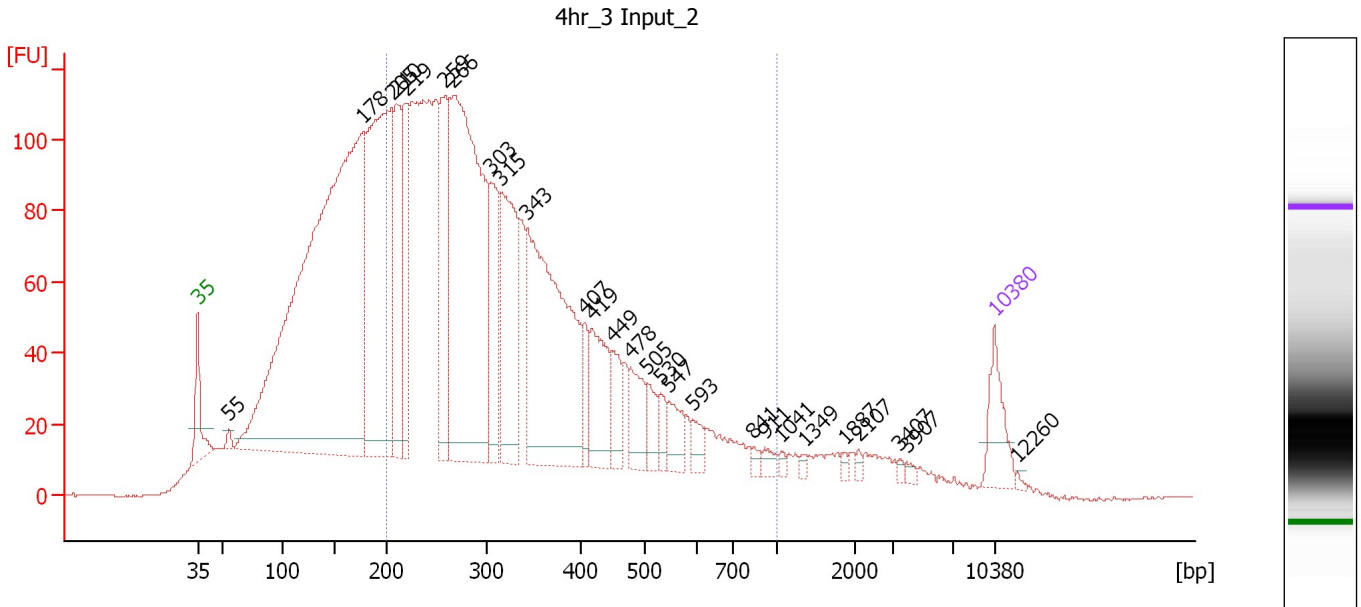
... Region table for sample 1 : 0hr 3 Input 2

From [bp]	To [bp]	Average Size [bp]	Molarity [pmol/l]	Conc. [pg/μl]	Corr. Area	% of Total	Size distribution in CV [%]	Color
200	1,000	337	39,481.7	7,656.84	3,498.8	61	37.3	■

Assay Class: High Sensitivity DNA Assay
 Data Path: C:\...ents and Settings\Bioanalyzer\2012-07-19\2012-07-19_006.xad

Created: 7/19/2012 3:18:27 PM
 Modified: 7/19/2012 4:09:46 PM

Electropherogram Summary Continued ...



Overall Results for sample 2 : 4hr 3 Input 2

Number of peaks found: 27 Corr. Area 1: 2,888.8
 Noise: 0.2

Peak table for sample 2 : 4hr 3 Input 2

Peak	Size [bp]	Conc. [pg/μl]	Molarity [pmol/l]	Observations
1	35	125.00	5,411.3	Lower Marker
2	55	16.37	453.4	
3	178	2,395.85	20,403.7	
4	205	938.69	6,922.8	
5	210	291.31	2,105.1	
6	219	232.39	1,606.5	
7	259	297.52	1,742.1	
8	266	1,084.93	6,176.1	
9	303	215.23	1,074.9	
10	315	362.82	1,745.8	
11	343	723.73	3,196.4	
12	407	59.46	221.1	
13	419	164.78	596.1	
14	449	71.43	240.9	
15	478	92.76	294.0	
16	505	51.02	153.0	
17	530	36.39	104.0	
18	547	59.61	165.2	
19	593	31.49	80.4	
20	841	11.55	20.8	
21	911	17.01	28.3	
22	1,041	7.94	11.6	
23	1,349	7.71	8.7	
24	1,887	7.49	6.0	
25	2,107	7.24	5.2	
26	3,407	5.18	2.3	

Assay Class: High Sensitivity DNA Assay
 Data Path: C:\...ents and Settings\Bioanalyzer\2012-07-19\2012-07-19_006.xad

Created: 7/19/2012 3:18:27 PM
 Modified: 7/19/2012 4:09:46 PM

Electropherogram Summary Continued ...

... Peak table for sample 2 : 4hr 3 Input 2

Peak	Size [bp]	Conc. [pg/μl]	Molarity [pmol/l]	Observations
27	3,907	7.94	3.1	
28	10,380	75.00	10.9	Upper Marker
29	12,260	0.00	0.0	

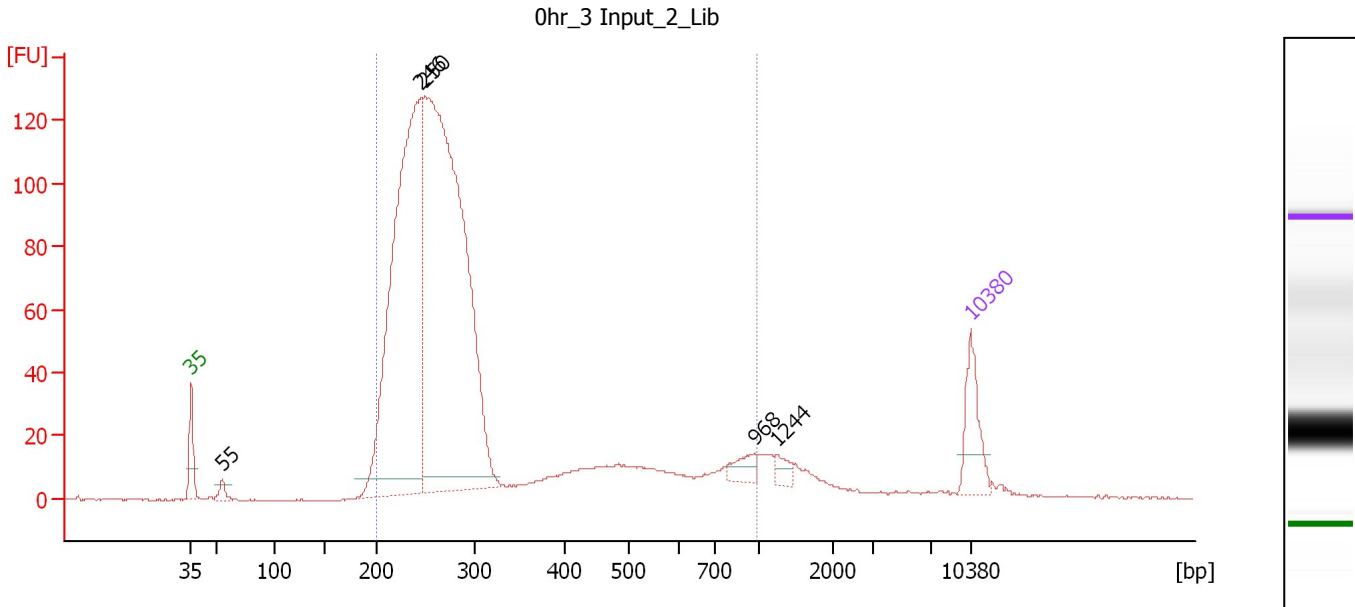
Region table for sample 2 : 4hr 3 Input 2

From [bp]	To [bp]	Average Size [bp]	Molarity [pmol/l]	Conc. [pg/μl]	Corr. Area	% of Total	Size distribution in CV [%]	Color
200	1,000	344	30,730.1	6,005.03	2,888.8	60	39.2	■

Assay Class: High Sensitivity DNA Assay
 Data Path: C:\...ents and Settings\Bioanalyzer\2012-07-19\2012-07-19_006.xad

Created: 7/19/2012 3:18:27 PM
 Modified: 7/19/2012 4:09:46 PM

Electropherogram Summary Continued ...



Overall Results for sample 3 : Ohr_3 Input_2 Lib

Number of peaks found: 5 Corr. Area 1: 1,684.7
 Noise: 0.2

Peak table for sample 3 : Ohr_3 Input_2 Lib

Peak	Size [bp]	Conc. [pg/μl]	Molarity [pmol/l]	Observations
1	35	125.00	5,411.3	Lower Marker
2	55	22.63	620.5	
3	246	1,231.85	7,593.4	
4	250	1,737.97	10,551.1	
5	968	32.02	50.1	
6	1,244	19.50	23.7	
7	10,380	75.00	10.9	Upper Marker

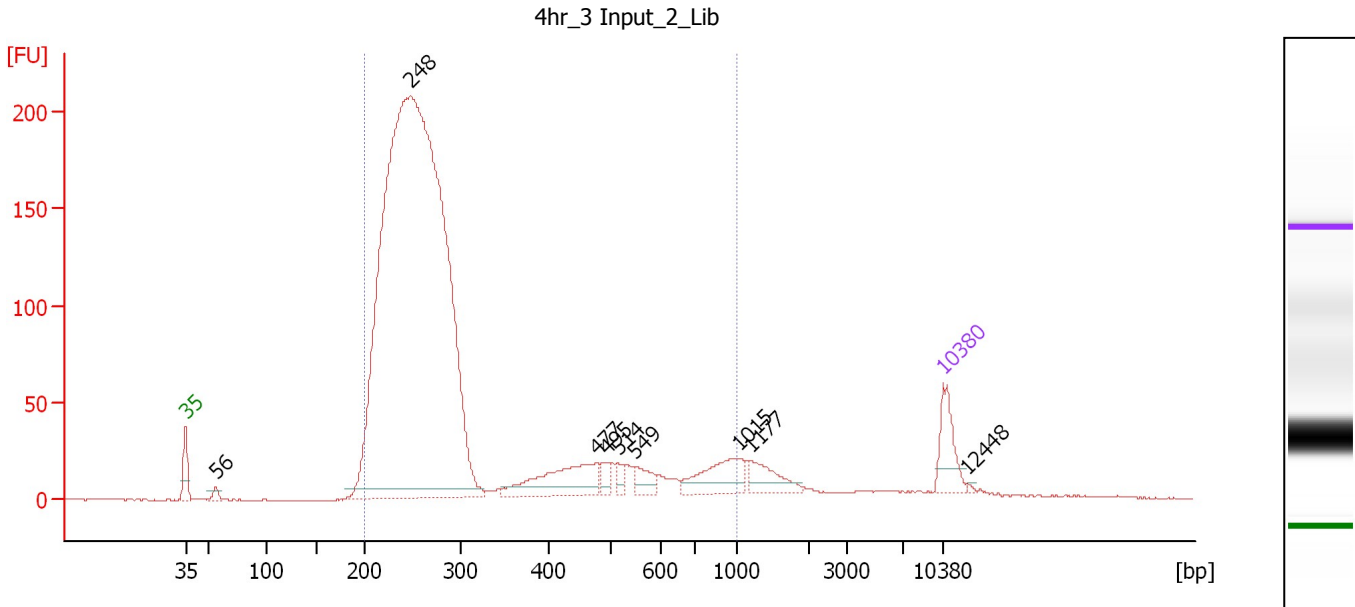
Region table for sample 3 : Ohr_3 Input_2 Lib

From [bp]	To [bp]	Average Size [bp]	Molarity [pmol/l]	Conc. [pg/μl]	Corr. Area	% of Total	Size distribution in CV [%]	Color
200	987	312	18,796.8	3,364.85	1,684.7	93	46.3	Blue

Assay Class: High Sensitivity DNA Assay
 Data Path: C:\...ents and Settings\Bioanalyzer\2012-07-19\2012-07-19_006.xad

Created: 7/19/2012 3:18:27 PM
 Modified: 7/19/2012 4:09:46 PM

Electropherogram Summary Continued ...



Overall Results for sample 4 : 4hr 3 Input 2 Lib

Number of peaks found: 9 Corr. Area 1: 2,599.9
 Noise: 0.3

Peak table for sample 4 : 4hr 3 Input 2 Lib

Peak	Size [bp]	Conc. [pg/μl]	Molarity [pmol/l]	Observations
1	35	125.00	5,411.3	Lower Marker
2	56	21.56	587.9	
3	248	4,028.21	24,658.9	
4	477	194.05	616.6	
5	495	25.60	78.4	
6	514	21.11	62.2	
7	549	43.05	118.8	
8	1,015	108.66	162.2	
9	1,177	64.65	83.2	
10	10,380	75.00	10.9	Upper Marker
11	12,448	0.00	0.0	

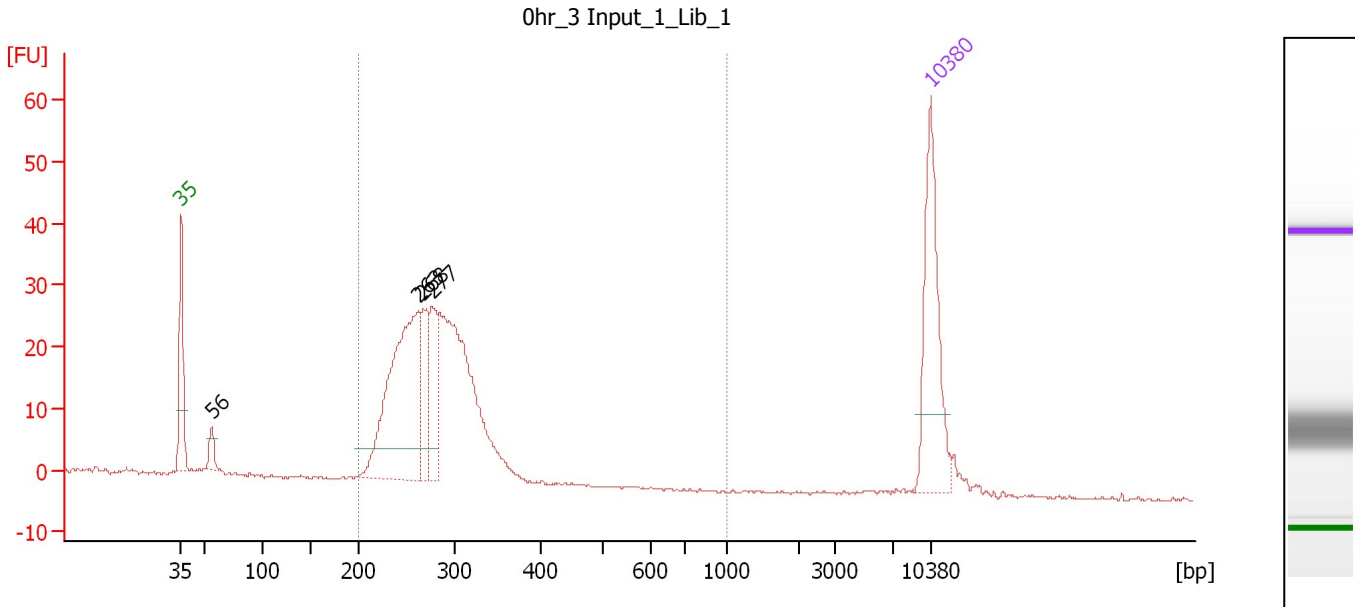
Region table for sample 4 : 4hr 3 Input 2 Lib

From [bp]	To [bp]	Average Size [bp]	Molarity [pmol/l]	Conc. [pg/μl]	Corr. Area	% of Total	Size distribution in CV [%]	Color
200	1,000	311	25,435.2	4,512.26	2,599.9	93	47.2	Blue

Assay Class: High Sensitivity DNA Assay
 Data Path: C:\...ents and Settings\Bioanalyzer\2012-07-19\2012-07-19_006.xad

Created: 7/19/2012 3:18:27 PM
 Modified: 7/19/2012 4:09:46 PM

Electropherogram Summary Continued ...



Overall Results for sample 5 : Ohr 3 Input 1 Lib 1

Number of peaks found: 4 Corr. Area 1: 352.7
 Noise: 0.2

Peak table for sample 5 : Ohr 3 Input 1 Lib 1

Peak	Size [bp]	Conc. [pg/μl]	Molarity [pmol/l]	Observations
1	35	125.00	5,411.3	Lower Marker
2	56	15.06	408.7	
3	263	200.77	1,154.6	
4	268	47.34	267.7	
5	277	49.76	272.2	
6	10,380	75.00	10.9	Upper Marker

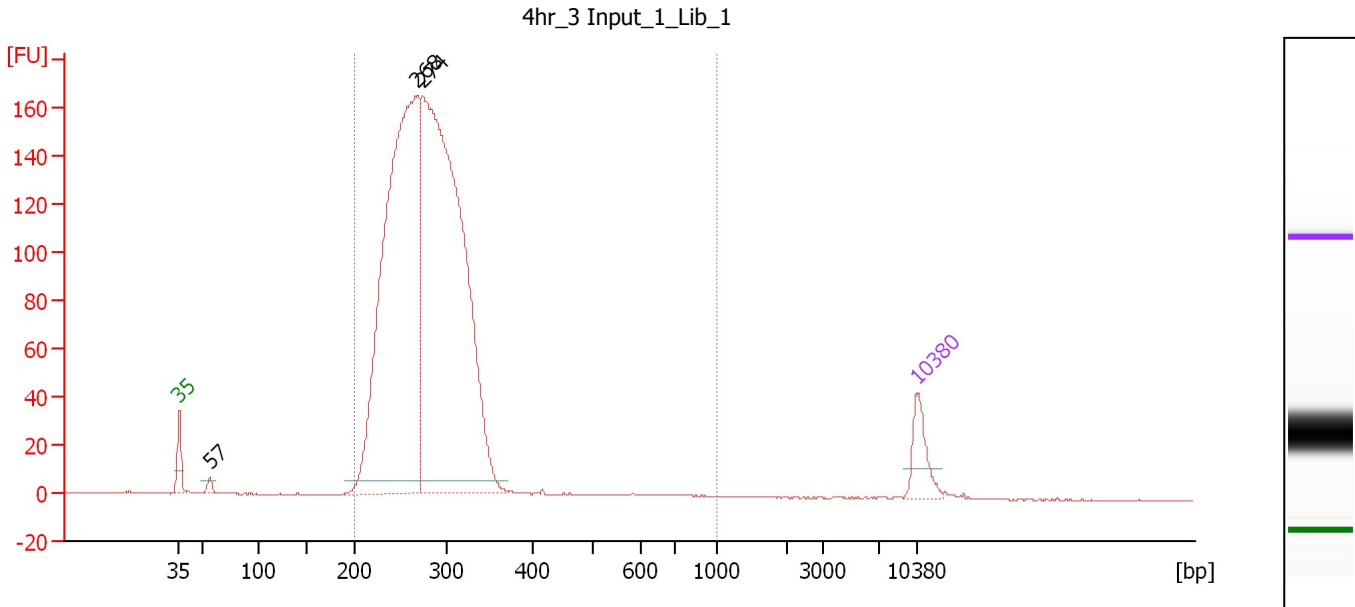
Region table for sample 5 : Ohr 3 Input 1 Lib 1

From [bp]	To [bp]	Average Size [bp]	Molarity [pmol/l]	Conc. [pg/μl]	Corr. Area	% of Total	Size distribution in CV [%]	Color
200	1,000	279	2,897.9	526.73	352.7	94	12.2	Blue

Assay Class: High Sensitivity DNA Assay
 Data Path: C:\...ents and Settings\Bioanalyzer\2012-07-19\2012-07-19_006.xad

Created: 7/19/2012 3:18:27 PM
 Modified: 7/19/2012 4:09:46 PM

Electropherogram Summary Continued ...



Overall Results for sample 6 : 4hr 3 Input 1 Lib 1

Number of peaks found: 3 Corr. Area 1: 2,130.6
 Noise: 0.2

Peak table for sample 6 : 4hr 3 Input 1 Lib 1

Peak	Size [bp]	Conc. [pg/μl]	Molarity [pmol/l]	Observations
1	35	125.00	5,411.3	Lower Marker
2	57	19.57	522.3	
3	268	2,060.43	11,639.8	
4	274	2,393.10	13,237.6	
5	10,380	75.00	10.9	Upper Marker

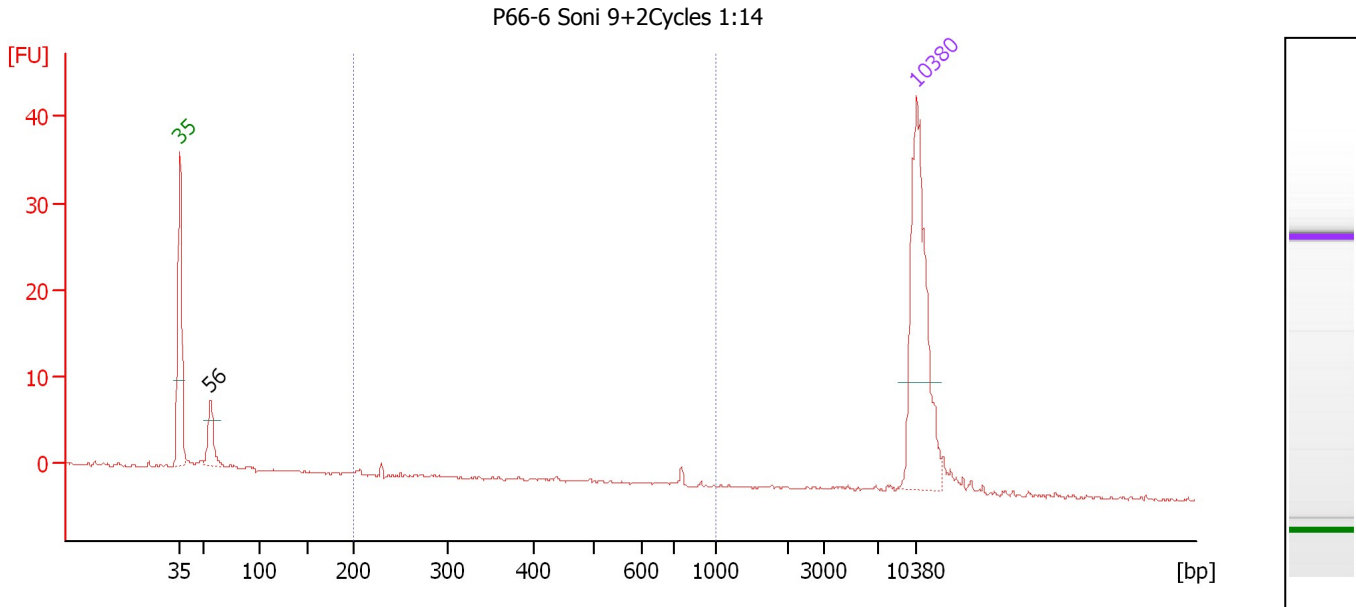
Region table for sample 6 : 4hr 3 Input 1 Lib 1

From [bp]	To [bp]	Average Size [bp]	Molarity [pmol/l]	Conc. [pg/μl]	Corr. Area	% of Total	Size distribution in CV [%]	Color
200	1,000	280	24,910.6	4,512.07	2,130.6	99	17.3	Blue

Assay Class: High Sensitivity DNA Assay
 Data Path: C:\...ents and Settings\Bioanalyzer\2012-07-19\2012-07-19_006.xad

Created: 7/19/2012 3:18:27 PM
 Modified: 7/19/2012 4:09:46 PM

Electropherogram Summary Continued ...



Overall Results for sample 7 : P66-6 Soni 9+2Cycles 1:14

Number of peaks found: 1 Corr. Area 1: 1.7
 Noise: 0.1

Peak table for sample 7 : P66-6 Soni 9+2Cycles 1:14

Peak	Size [bp]	Conc. [pg/μl]	Molarity [pmol/l]	Observations
1	35	125.00	5,411.3	Lower Marker
2	56	21.65	582.5	
3	10,380	75.00	10.9	Upper Marker

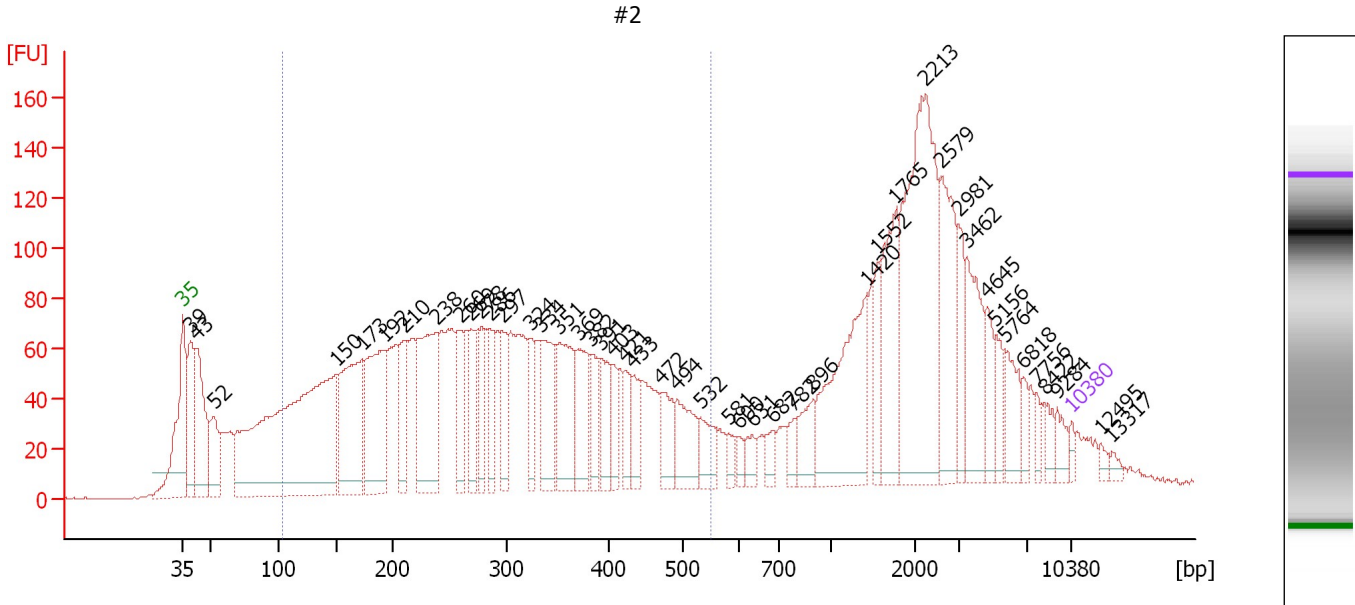
Region table for sample 7 : P66-6 Soni 9+2Cycles 1:14

From [bp]	To [bp]	Average Size [bp]	Molarity [pmol/l]	Conc. [pg/μl]	Corr. Area	% of Total	Size distribution in CV [%]	Color
200	1,000	504	13.3	2.78	1.7	6	49.4	Blue

Assay Class: High Sensitivity DNA Assay
 Data Path: C:\...ents and Settings\Bioanalyzer\2012-07-19\2012-07-19_006.xad

Created: 7/19/2012 3:18:27 PM
 Modified: 7/19/2012 4:09:46 PM

Electropherogram Summary Continued ...



Overall Results for sample 8 : #2

Number of peaks found: 47 Corr. Area 1: 2,982.4
 Noise: 0.4

Peak table for sample 8 : #2

Peak	Size [bp]	Conc. [pg/μl]	Molarity [pmol/l]	Observations
1	35	125.00	5,411.3	Lower Marker
2	39	1,497.72	57,806.9	
3	43	1,953.19	69,370.1	
4	52	878.11	25,569.6	
5	150	7,775.40	78,537.1	
6	173	2,495.28	21,831.7	
7	192	2,279.39	18,014.6	
8	210	998.65	7,222.0	
9	238	2,190.02	13,921.0	
10	260	776.05	4,520.5	
11	269	861.62	4,859.9	
12	278	647.65	3,528.8	
13	286	680.13	3,607.6	
14	297	605.24	3,092.6	
15	324	538.49	2,522.0	
16	334	1,027.15	4,655.1	
17	351	1,285.38	5,543.6	
18	369	878.07	3,602.2	
19	382	569.54	2,260.8	
20	391	562.64	2,177.6	
21	403	391.19	1,469.8	
22	421	363.57	1,308.7	
23	433	440.78	1,543.5	
24	472	509.52	1,636.7	
25	494	728.29	2,234.9	
26	532	459.47	1,308.6	

Assay Class: High Sensitivity DNA Assay
 Data Path: C:\...ents and Settings\Bioanalyzer\2012-07-19\2012-07-19_006.xad


Created: 7/19/2012 3:18:27 PM
 Modified: 7/19/2012 4:09:46 PM

Electropherogram Summary Continued ...

... Peak table for sample 8 : #2

Peak	Size [bp]	Conc. [pg/µl]	Molarity [pmol/l]	Observations
27	581	173.52	452.4	
28	600	132.64	335.1	
29	631	196.09	470.7	
30	682	195.72	435.1	
31	782	199.30	385.9	
32	896	421.05	711.9	
33	1,420	1,803.17	1,923.3	
34	1,552	381.68	372.6	
35	1,765	1,142.33	980.7	
36	2,213	3,077.67	2,107.2	
37	2,579	1,226.78	720.8	
38	2,981	412.73	209.8	
39	3,462	862.81	377.6	
40	4,645	370.26	120.8	
41	5,156	269.10	79.1	
42	5,764	432.94	113.8	
43	6,818	155.40	34.5	
44	7,756	126.07	24.6	
45	8,422	147.21	26.5	
46	9,284	174.19	28.4	
47	10,380	75.00	10.9	Upper Marker
48	12,495	0.00	0.0	
49	13,317	0.00	0.0	

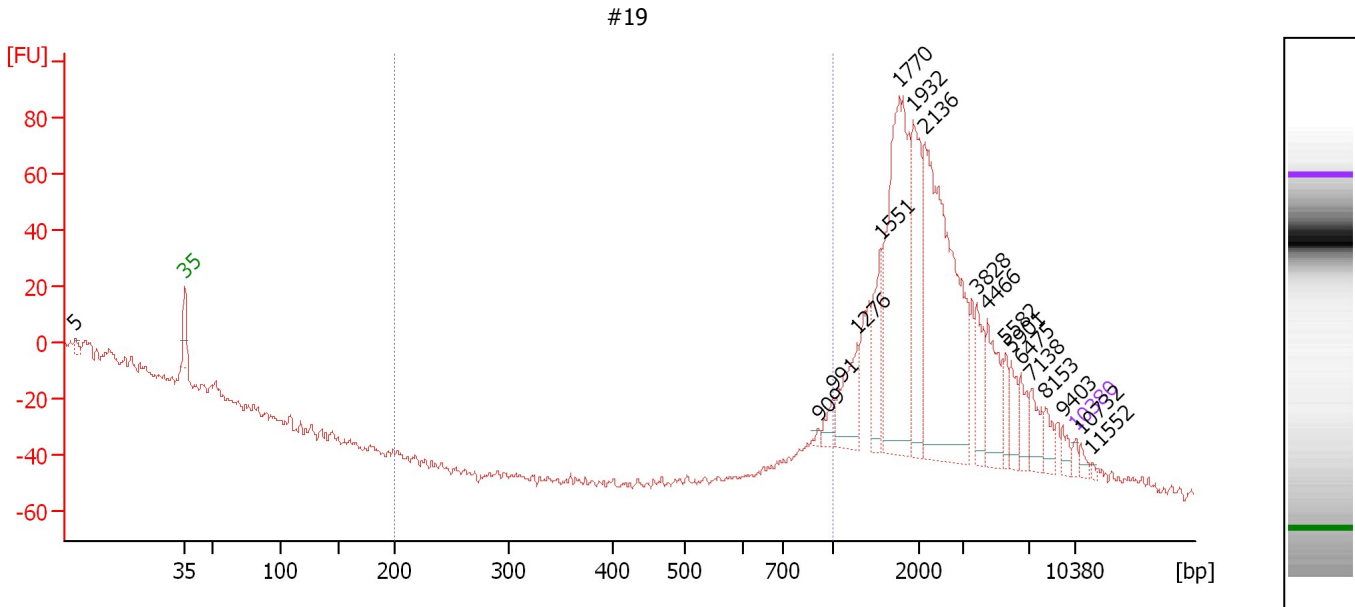
Region table for sample 8 : #2

From [bp]	To [bp]	Average Size [bp]	Molarity [pmol/l]	Conc. [pg/µl]	Corr. Area	% of Total	Size distribution in CV [%]	Color
103	548	291	221,710.6	33,106.64	2,982.4	54	37.3	

Assay Class: High Sensitivity DNA Assay
 Data Path: C:\...ents and Settings\Bioanalyzer\2012-07-19\2012-07-19_006.xad

Created: 7/19/2012 3:18:27 PM
 Modified: 7/19/2012 4:09:46 PM

Electropherogram Summary Continued ...



Overall Results for sample 9 : #19

Number of peaks found: 18 Corr. Area 1: 13.9
 Noise: 1.2

Peak table for sample 9 : #19

Peak	Size [bp]	Conc. [pg/μl]	Molarity [pmol/l]	Observations
1	5	0.00	0.0	
2	35	125.00	5,411.3	Lower Marker
3	909	51.46	85.8	
4	991	230.25	351.9	
5	1,276	813.27	965.4	
6	1,551	804.81	786.1	
7	1,770	3,364.79	2,880.5	
8	1,932	1,524.13	1,195.1	
9	2,136	4,205.97	2,983.6	
10	3,828	541.41	214.3	
11	4,466	757.79	257.1	
12	5,582	271.44	73.7	
13	5,901	299.21	76.8	
14	6,475	321.09	75.1	
15	7,138	353.62	75.1	
16	8,153	205.97	38.3	
17	9,403	136.58	22.0	
18	10,380	75.00	10.9	Upper Marker
19	10,732	0.00	0.0	
20	11,552	0.00	0.0	

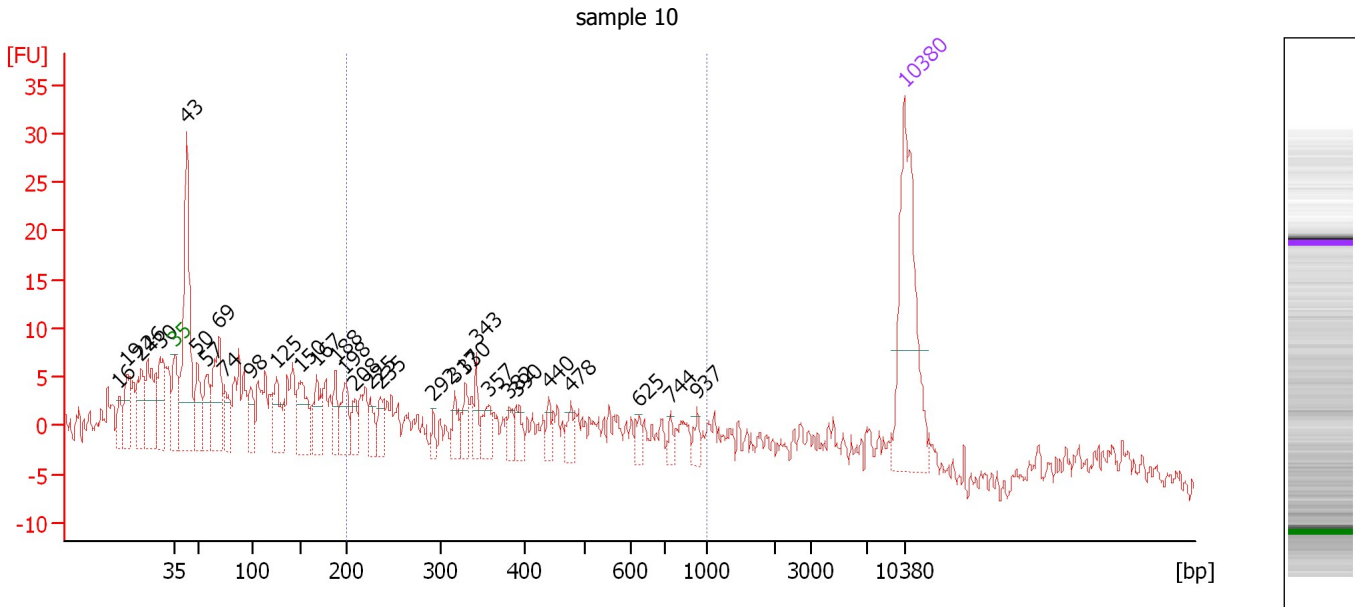
Region table for sample 9 : #19

From [bp]	To [bp]	Average Size [bp]	Molarity [pmol/l]	Conc. [pg/μl]	Corr. Area	% of Total	Size distribution in CV [%]	Color
200	1,000	959	325.5	206.03	13.9	1	3.1	Blue

Assay Class: High Sensitivity DNA Assay
 Data Path: C:\...ents and Settings\Bioanalyzer\2012-07-19\2012-07-19_006.xad

Created: 7/19/2012 3:18:27 PM
 Modified: 7/19/2012 4:09:46 PM

Electropherogram Summary Continued ...



Overall Results for sample 10 : sample 10

Number of peaks found: 31 Corr. Area 1: 183.9
 Noise: 1.6

Peak table for sample 10 : sample 10

Peak	Size [bp]	Conc. [pg/μl]	Molarity [pmol/l]	Observations
1	16	0.00	0.0	
2	19	0.00	0.0	
3	24	0.00	0.0	
4	26	0.00	0.0	
5	30	0.00	0.0	
6	35	125.00	5,411.3	Lower Marker
7	43	138.78	4,934.7	
8	50	31.47	962.7	
9	57	30.35	805.7	
10	69	56.84	1,245.6	
11	74	22.52	461.3	
12	98	21.25	329.7	
13	125	29.39	356.5	
14	150	35.66	360.7	
15	167	23.30	211.0	
16	188	17.12	138.2	
17	198	23.53	180.3	
18	208	12.89	93.8	
19	225	12.52	84.3	
20	235	14.12	90.9	
21	292	6.33	32.8	
22	317	12.74	60.8	
23	330	13.12	60.2	
24	343	11.84	52.3	
25	357	14.31	60.7	
26	382	8.51	33.7	

Assay Class: High Sensitivity DNA Assay
 Data Path: C:\...ents and Settings\Bioanalyzer\2012-07-19\2012-07-19_006.xad

Created: 7/19/2012 3:18:27 PM
 Modified: 7/19/2012 4:09:46 PM

Electropherogram Summary Continued ...

... Peak table for sample 10 : sample 10

Peak	Size [bp]	Conc. [pg/μl]	Molarity [pmol/l]	Observations
27	390	11.11	43.2	
28	440	8.23	28.3	
29	478	8.48	26.9	
30	625	5.89	14.3	
31	744	5.00	10.2	
32	937	6.30	10.2	
33	▶ 10,380	75.00	10.9	Upper Marker

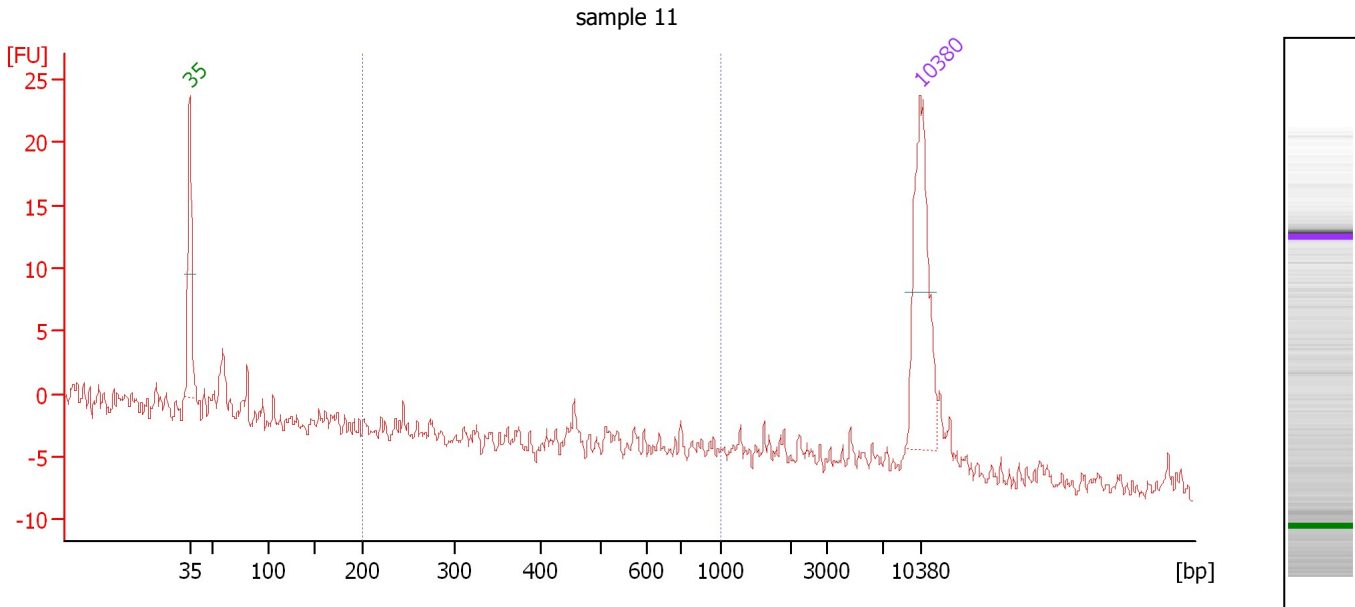
Region table for sample 10 : sample 10

From [bp]	To [bp]	Average Size [bp]	Molarity [pmol/l]	Conc. [pg/μl]	Corr. Area	% of Total	Size distribution in CV [%]	Color
200	1,000	444	1,524.9	349.74	183.9	31	43.1	■

Assay Class: High Sensitivity DNA Assay
 Data Path: C:\...ents and Settings\Bioanalyzer\2012-07-19\2012-07-19_006.xad

Created: 7/19/2012 3:18:27 PM
 Modified: 7/19/2012 4:09:46 PM

Electropherogram Summary Continued ...



Overall Results for sample 11 : sample 11

Number of peaks found: 0 Corr. Area 1: 2.2
 Noise: 1.0

Peak table for sample 11 : sample 11

Peak	Size [bp]	Conc. [pg/μl]	Molarity [pmol/l]	Observations
1	35	125.00	5,411.3	Lower Marker
2	10,380	75.00	10.9	Upper Marker

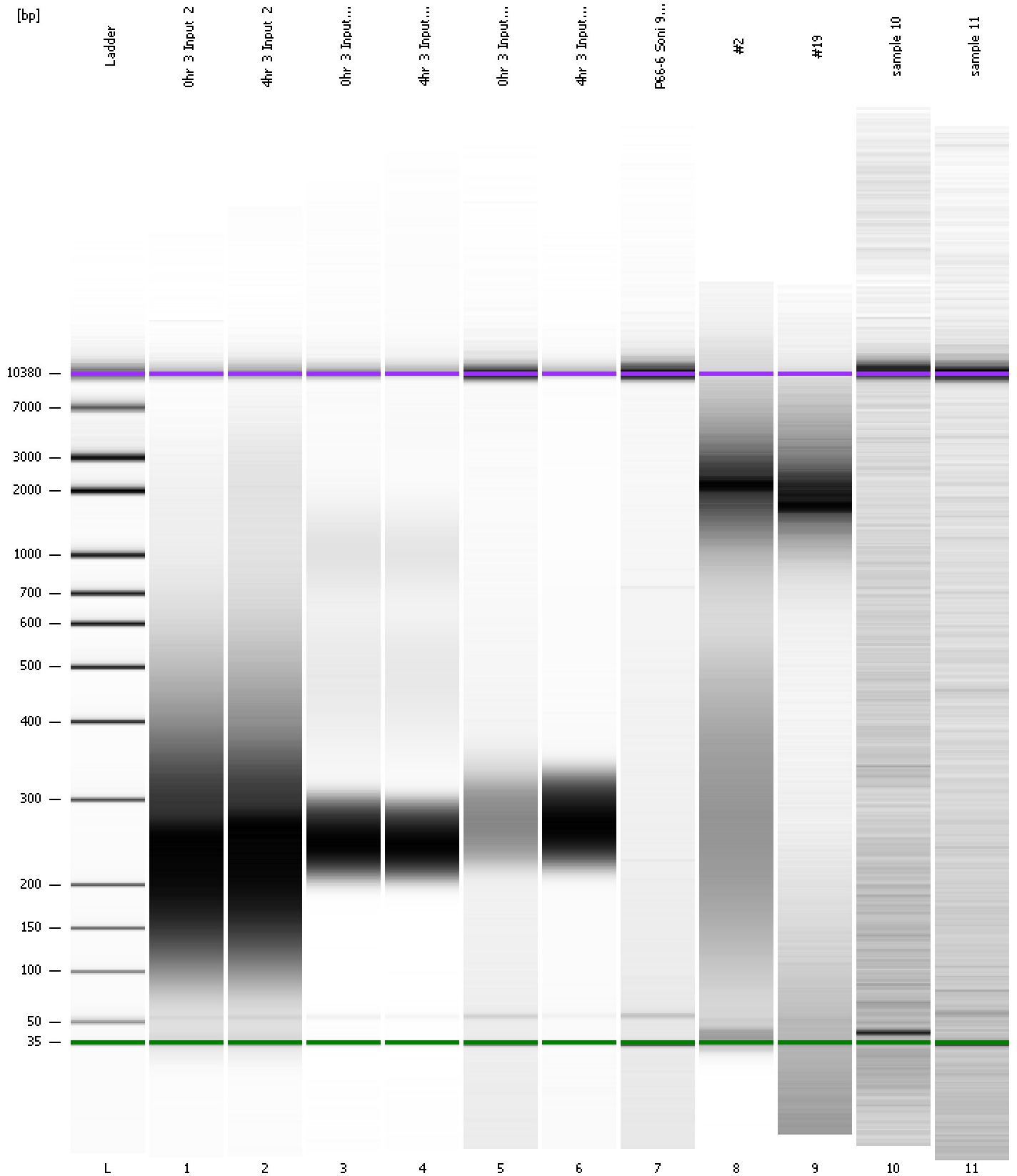
Region table for sample 11 : sample 11

From [bp]	To [bp]	Average Size [bp]	Molarity [pmol/l]	Conc. [pg/μl]	Corr. Area	% of Total	Size distribution in CV [%]	Color
200	1,000	524	19.5	5.76	2.2	12	29.2	Blue

Assay Class: High Sensitivity DNA Assay
Data Path: C:\...ents and Settings\Bioanalyzer\2012-07-19\2012-07-19_006.xad

Created: 7/19/2012 3:18:27 PM
Modified: 7/19/2012 4:09:46 PM

Gel Image



Assay Class: High Sensitivity DNA Assay
Data Path: C:\...ents and Settings\Bioanalyzer\2012-07-19\2012-07-19_006.xad

Created: 7/19/2012 3:18:27 PM
Modified: 7/19/2012 4:09:46 PM

Curves

Standard Curve

