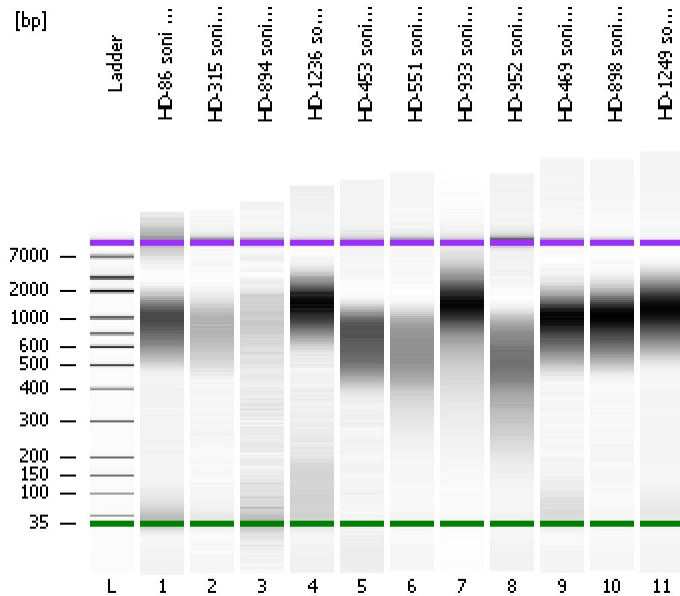


Assay Class: High Sensitivity DNA Assay
Data Path: C:\...ents and Settings\Bioanalyzer\2012-07-23\2012-07-23_001.xad

Created: 7/23/2012 9:29:06 AM
Modified: 7/23/2012 10:23:49 AM

Electrophoresis File Run Summary



Instrument Information:

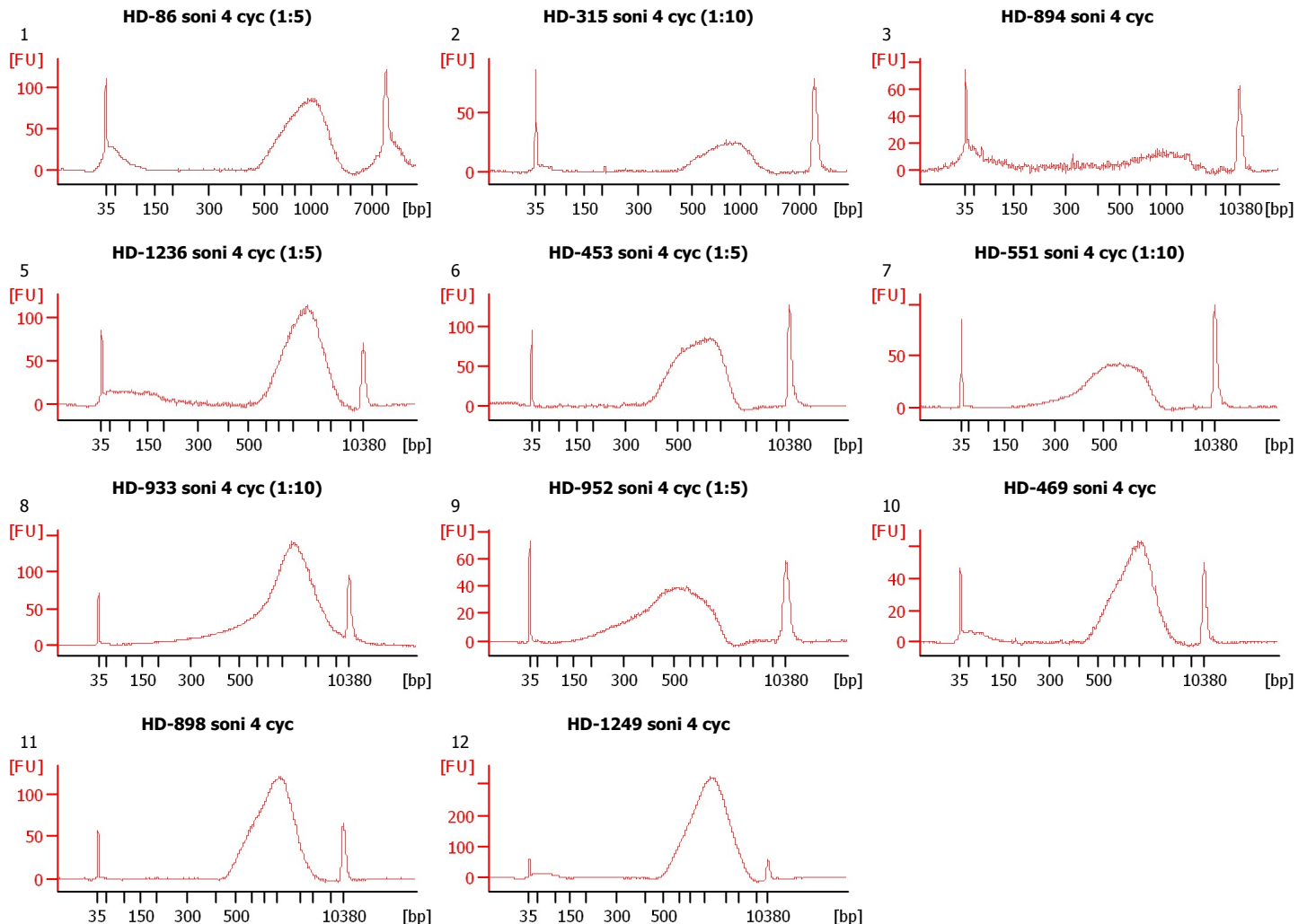
Instrument Name: DE13701086 Firmware: C.01.069
Serial#: DE13701086 Type: G2938B

Assay Information:

Assay Origin Path: C:\Program Files\Agilent\2100 bioanalyzer\2100 expert\assays\dsDNA\High Sensitivity DNA.xsy
Assay Class: High Sensitivity DNA Assay
Version: 1.03
Assay Comments: Copyright © 2003-2010 Agilent Technologies

Chip Information:

Chip Lot #:
Reagent Kit Lot #:
Chip Comments:



Assay Class: High Sensitivity DNA Assay
 Data Path: C:\...ents and Settings\Bioanalyzer\2012-07-23\2012-07-23_001.xad

Created: 7/23/2012 9:29:06 AM
 Modified: 7/23/2012 10:23:49 AM

Electrophoresis File Run Summary (Chip Summary)

Sample Name	Sample Comment	Rest. Digest	Status	Observation	Result Label	Result Color
HD-86 soni 4 cyc (1:5)	1	<input type="checkbox"/>	✓			
HD-315 soni 4 cyc (1:10)	2	<input type="checkbox"/>	✓			
HD-894 soni 4 cyc	3	<input type="checkbox"/>	✓			
HD-1236 soni 4 cyc (1:5)	5	<input type="checkbox"/>	✓			
HD-453 soni 4 cyc (1:5)	6	<input type="checkbox"/>	✓			
HD-551 soni 4 cyc (1:10)	7	<input type="checkbox"/>	✓			
HD-933 soni 4 cyc (1:10)	8	<input type="checkbox"/>	✓			
HD-952 soni 4 cyc (1:5)	9	<input type="checkbox"/>	✓			
HD-469 soni 4 cyc	10	<input type="checkbox"/>	✓			
HD-898 soni 4 cyc	11	<input type="checkbox"/>	✓			
HD-1249 soni 4 cyc	12	<input type="checkbox"/>	✓			
Ladder		<input type="checkbox"/>	✓			

Chip Lot #

Reagent Kit Lot #

Chip Comments :

Assay Class: High Sensitivity DNA Assay
Data Path: C:\...ents and Settings\Bioanalyzer\2012-07-23\2012-07-23_001.xad

Created: 7/23/2012 9:29:06 AM
Modified: 7/23/2012 10:23:49 AM

Electrophoresis Assay Details

General Analysis Settings

Number of Available Sample and Ladder Wells (Max.) : 12
Minimum Visible Range [s] : 32
Maximum Visible Range [s] : 138
Start Analysis Time Range [s] : 33
End Analysis Time Range [s] : 137.5
Ladder Concentration [pg/μl] : 1950
Uses Standard Area for Ladder Fragments
Lower Marker Concentration [pg/μl] : 125
Upper Marker Concentration [pg/μl] : 75
Used Upper Marker for Quantitation
Standard Curve Fit is Point to Point
Show Data Aligned to Lower and Upper Marker

Integrator Settings

Integration Start Time [s] : 33.05
Integration End Time [s] : 137
Slope Threshold : 0.8
Height Threshold [FU] : 5
Area Threshold : 0.1
Width Threshold [s] : 0.6
Baseline Plateau [s] : 0.5

Filter Settings

Filter Width [s] : 0.5
Polynomial Order : 4

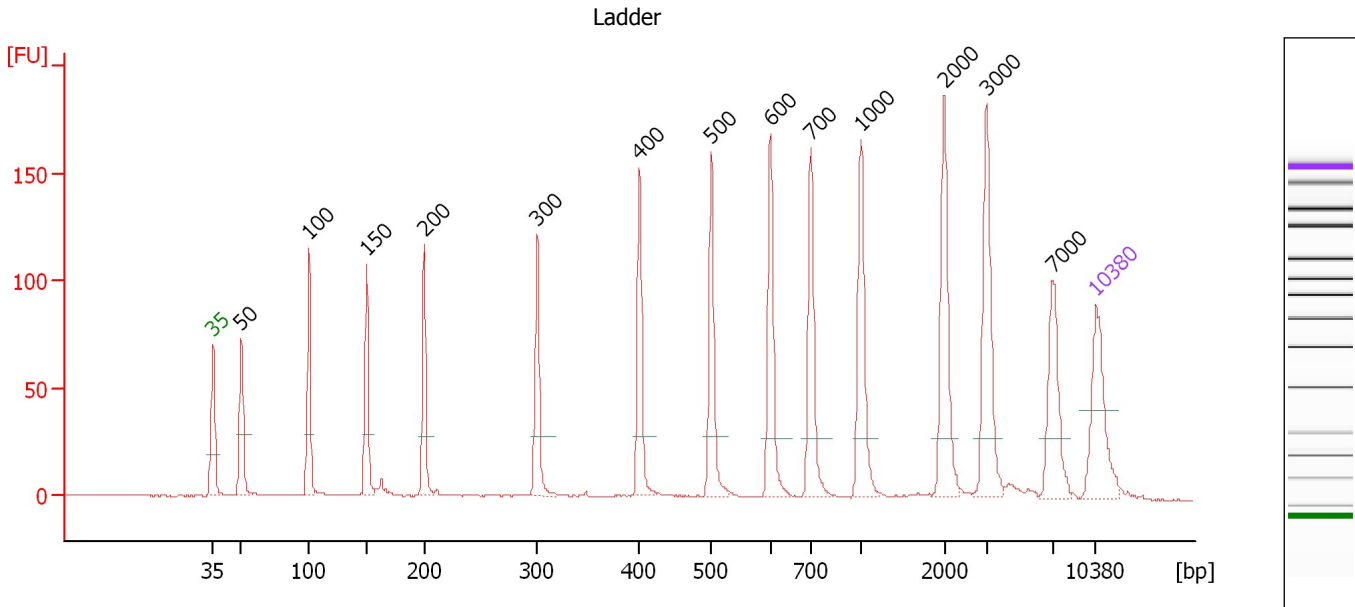
Ladder

Ladder Peak	Size	Area
1	35	160
2	50	210
3	100	208
4	150	221
5	200	242
6	300	270
7	400	305
8	500	306
9	600	336
10	700	321
11	1000	366
12	2000	413
13	3000	411
14	7000	400
15	10380	214

Assay Class: High Sensitivity DNA Assay
 Data Path: C:\...ents and Settings\Bioanalyzer\2012-07-23\2012-07-23_001.xad

Created: 7/23/2012 9:29:06 AM
 Modified: 7/23/2012 10:23:49 AM

Electropherogram Summary



Overall Results for Ladder

Noise: 0.1

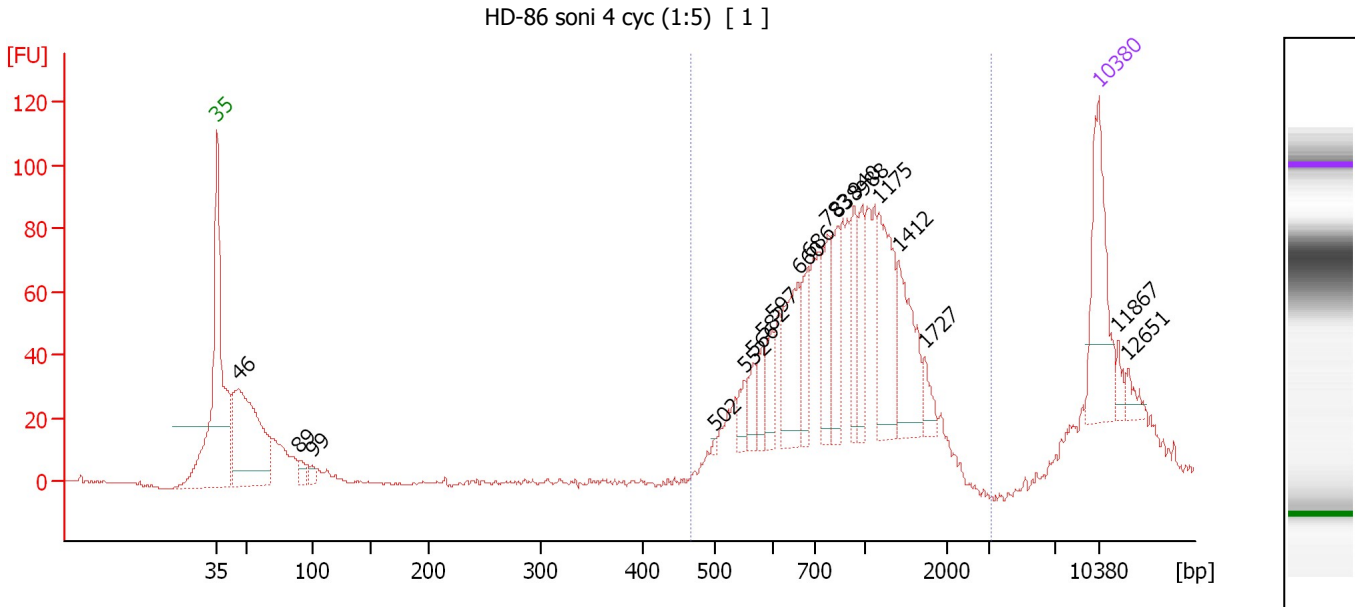
Peak table for Ladder

Peak	Size [bp]	Conc. [pg/μl]	Molarity [pmol/l]	Observations
1	35	125.00	5,411.3	Lower Marker
2	50	150.00	4,545.5	Ladder Peak
3	100	150.00	2,272.7	Ladder Peak
4	150	150.00	1,515.2	Ladder Peak
5	200	150.00	1,136.4	Ladder Peak
6	300	150.00	757.6	Ladder Peak
7	400	150.00	568.2	Ladder Peak
8	500	150.00	454.5	Ladder Peak
9	600	150.00	378.8	Ladder Peak
10	700	150.00	324.7	Ladder Peak
11	1,000	150.00	227.3	Ladder Peak
12	2,000	150.00	113.6	Ladder Peak
13	3,000	150.00	75.8	Ladder Peak
14	7,000	150.00	32.5	Ladder Peak
15	10,380	75.00	10.9	Upper Marker

Assay Class: High Sensitivity DNA Assay
 Data Path: C:\...ents and Settings\Bioanalyzer\2012-07-23\2012-07-23_001.xad

Created: 7/23/2012 9:29:06 AM
 Modified: 7/23/2012 10:23:49 AM

Electropherogram Summary Continued ...



Overall Results for sample 1 : HD-86 soni 4 cyc (1:5)

Number of peaks found: 19 Corr. Area 1: 1,099.3
 Noise: 0.3

Peak table for sample 1 : HD-86 soni 4 cyc (1:5)

Peak	Size [bp]	Conc. [pg/µl]	Molarity [pmol/l]	Observations
1	35	125.00	5,411.3	Lower Marker
2	46	238.05	7,879.5	
3	89	12.85	217.5	
4	99	8.01	122.6	
5	502	2.09	6.3	
6	552	15.68	43.0	
7	566	17.30	46.3	
8	582	20.22	52.6	
9	597	25.76	65.4	
10	660	68.95	158.2	
11	686	32.78	72.4	
12	783	41.27	79.8	
13	838	44.89	81.2	
14	940	35.49	57.2	
15	988	37.10	56.9	
16	1,175	75.98	98.0	
17	1,412	62.27	66.8	
18	1,727	13.36	11.7	
19	10,380	75.00	10.9	Upper Marker
20	11,867	0.00	0.0	
21	12,651	0.00	0.0	

Region table for sample 1 : HD-86 soni 4 cyc (1:5)

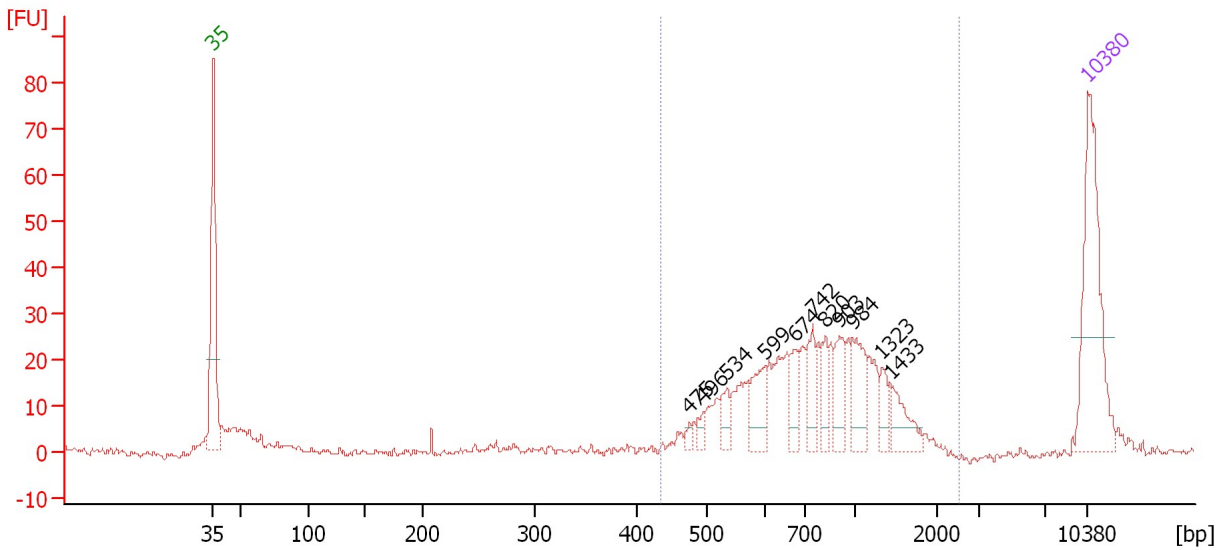
From [bp]	To [bp]	Average Size [bp]	Molarity [pmol/l]	Conc. [pg/µl]	Corr. Area	% of Total	Size distribution in CV [%]	Color
468	3,123	966	1,526.1	833.58	1,099.3	77	38.1	Blue

Assay Class: High Sensitivity DNA Assay
 Data Path: C:\...ents and Settings\Bioanalyzer\2012-07-23\2012-07-23_001.xad

Created: 7/23/2012 9:29:06 AM
 Modified: 7/23/2012 10:23:49 AM

Electropherogram Summary Continued ...

HD-315 soni 4 cyc (1:10) [2]



Overall Results for sample 2 : HD-315 soni 4 cyc (1:10)

Number of peaks found: 11 Corr. Area 1: 368.1
 Noise: 0.8

Peak table for sample 2 : HD-315 soni 4 cyc (1:10)

Peak	Size [bp]	Conc. [pg/µl]	Molarity [pmol/l]	Observations
1	35	125.00	5,411.3	Lower Marker
2	475	3.79	12.1	
3	496	6.29	19.2	
4	534	12.06	34.2	
5	599	25.52	64.6	
6	674	17.01	38.3	
7	742	20.75	42.3	
8	820	13.33	24.6	
9	903	21.81	36.6	
10	984	27.21	41.9	
11	1,323	11.01	12.6	
12	1,433	18.90	20.0	
13	10,380	75.00	10.9	Upper Marker

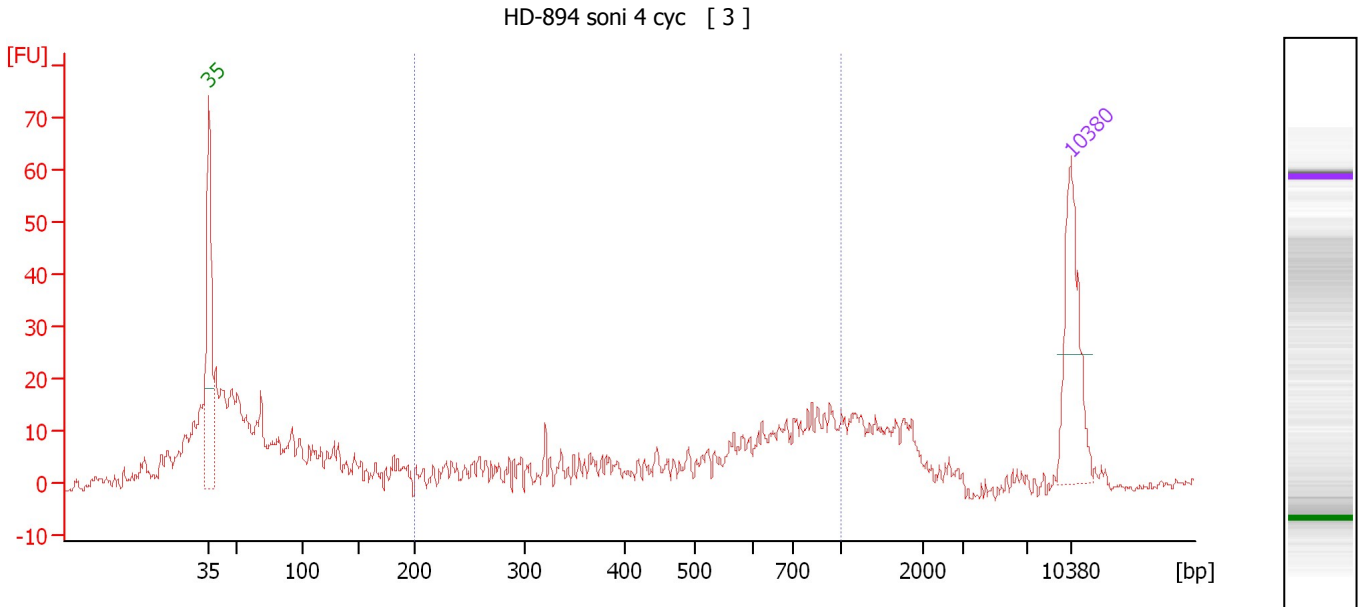
Region table for sample 2 : HD-315 soni 4 cyc (1:10)

From [bp]	To [bp]	Average Size [bp]	Molarity [pmol/l]	Conc. [pg/µl]	Corr. Area	% of Total	Size distribution in CV [%]	Color
435	2,493	856	672.8	326.95	368.1	88	38.6	Blue

Assay Class: High Sensitivity DNA Assay
Data Path: C:\...ents and Settings\Bioanalyzer\2012-07-23\2012-07-23_001.xad

Created: 7/23/2012 9:29:06 AM
Modified: 7/23/2012 10:23:49 AM

Electropherogram Summary Continued ...



Setpoint Deviations for sample 3 : HD-894 soni 4 cyc

Height Threshold [FU] : 20

Overall Results for sample 3 : HD-894 soni 4 cyc

Number of peaks found: 0 Corr. Area 1: 223.7
Noise: 0.9

Peak table for sample 3 : HD-894 soni 4 cyc

Peak	Size [bp]	Conc. [pg/μl]	Molarity [pmol/l]	Observations
1	35	125.00	5,411.3	Lower Marker
2	10,380	75.00	10.9	Upper Marker

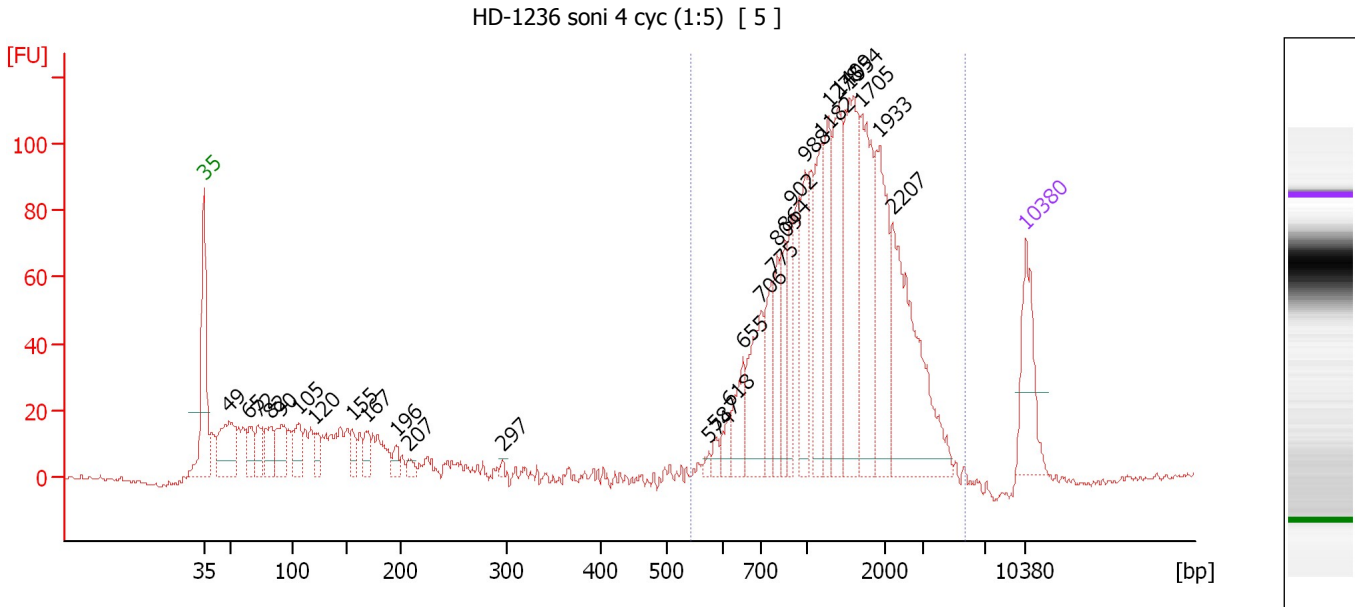
Region table for sample 3 : HD-894 soni 4 cyc

From [bp]	To [bp]	Average Size [bp]	Molarity [pmol/l]	Conc. [pg/μl]	Corr. Area	% of Total	Size distribution in CV [%]	Color
200	1,000	570	1,068.8	305.54	223.7	33	38.4	Blue

Assay Class: High Sensitivity DNA Assay
 Data Path: C:\...ents and Settings\Bioanalyzer\2012-07-23\2012-07-23_001.xad

Created: 7/23/2012 9:29:06 AM
 Modified: 7/23/2012 10:23:49 AM

Electropherogram Summary Continued ...



Overall Results for sample 4 : HD-1236 soni 4 cyc (1:5)

Number of peaks found: 29 Corr. Area 1: 1,371.0
 Noise: 0.9

Peak table for sample 4 : HD-1236 soni 4 cyc (1:5)

Peak	Size [bp]	Conc. [pg/μl]	Molarity [pmol/l]	Observations
1	35	125.00	5,411.3	Lower Marker
2	49	118.94	3,655.9	
3	65	46.80	1,089.3	
4	72	44.46	931.9	
5	82	52.12	962.9	
6	90	63.79	1,068.2	
7	105	49.73	719.4	
8	120	32.07	404.5	
9	155	27.89	272.7	
10	167	29.77	269.4	
11	196	17.15	132.7	
12	207	11.11	81.2	
13	297	4.57	23.3	
14	574	6.46	17.0	
15	587	11.84	30.6	
16	618	19.28	47.3	
17	655	53.79	124.5	
18	706	98.04	210.3	
19	775	60.75	118.8	
20	809	52.66	98.6	
21	864	55.35	97.1	
22	902	59.95	100.7	
23	988	81.66	125.3	
24	1,182	85.57	109.7	
25	1,278	101.64	120.5	
26	1,409	120.52	129.6	

Assay Class: High Sensitivity DNA Assay
 Data Path: C:\...ents and Settings\Bioanalyzer\2012-07-23\2012-07-23_001.xad

Created: 7/23/2012 9:29:06 AM
 Modified: 7/23/2012 10:23:49 AM

Electropherogram Summary Continued ...

... Peak table for sample 4 : HD-1236 soni 4 cyc (1:5)

Peak	Size [bp]	Conc. [pg/μl]	Molarity [pmol/l]	Observations
27	1,554	172.28	168.0	
28	1,705	140.31	124.7	
29	1,933	134.60	105.5	
30	2,207	207.05	142.1	
31	10,380	75.00	10.9	Upper Marker

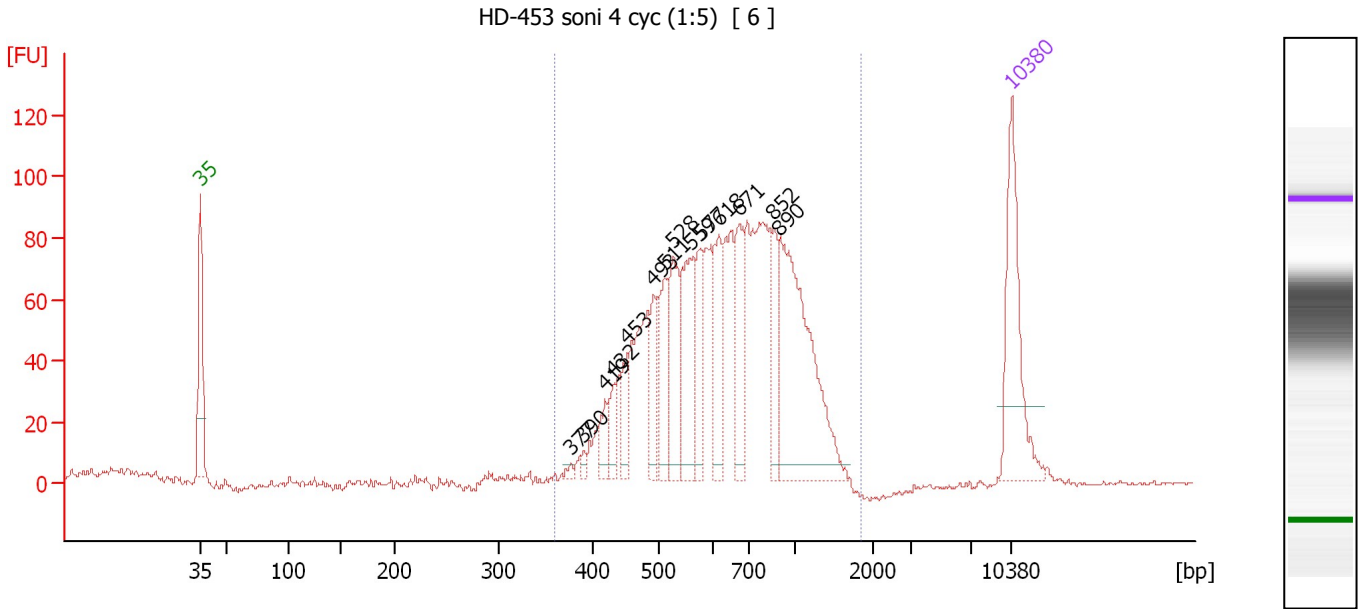
Region table for sample 4 : HD-1236 soni 4 cyc (1:5)

From [bp]	To [bp]	Average Size [bp]	Molarity [pmol/l]	Conc. [pg/μl]	Corr. Area	% of Total	Size distribution in CV [%]	Color
543	5,710	1,515	1,981.4	1,573.12	1,371.0	73	47.5	

Assay Class: High Sensitivity DNA Assay
 Data Path: C:\...ents and Settings\Bioanalyzer\2012-07-23\2012-07-23_001.xad

Created: 7/23/2012 9:29:06 AM
 Modified: 7/23/2012 10:23:49 AM

Electropherogram Summary Continued ...



Overall Results for sample 5 : HD-453 soni 4 cyc (1:5)

Number of peaks found: 14 Corr. Area 1: 1,475.6
 Noise: 0.6

Peak table for sample 5 : HD-453 soni 4 cyc (1:5)

Peak	Size [bp]	Conc. [pg/µl]	Molarity [pmol/l]	Observations
1	35	125.00	5,411.3	Lower Marker
2	377	3.47	13.9	
3	390	5.06	19.6	
4	419	19.75	71.4	
5	432	18.00	63.1	
6	453	25.07	83.9	
7	493	41.22	126.6	
8	511	49.16	145.7	
9	528	63.31	181.7	
10	559	75.75	205.2	
11	577	35.97	94.4	
12	618	53.00	130.0	
13	671	53.33	120.4	
14	852	34.93	62.1	
15	890	175.69	299.1	
16	10,380	75.00	10.9	Upper Marker

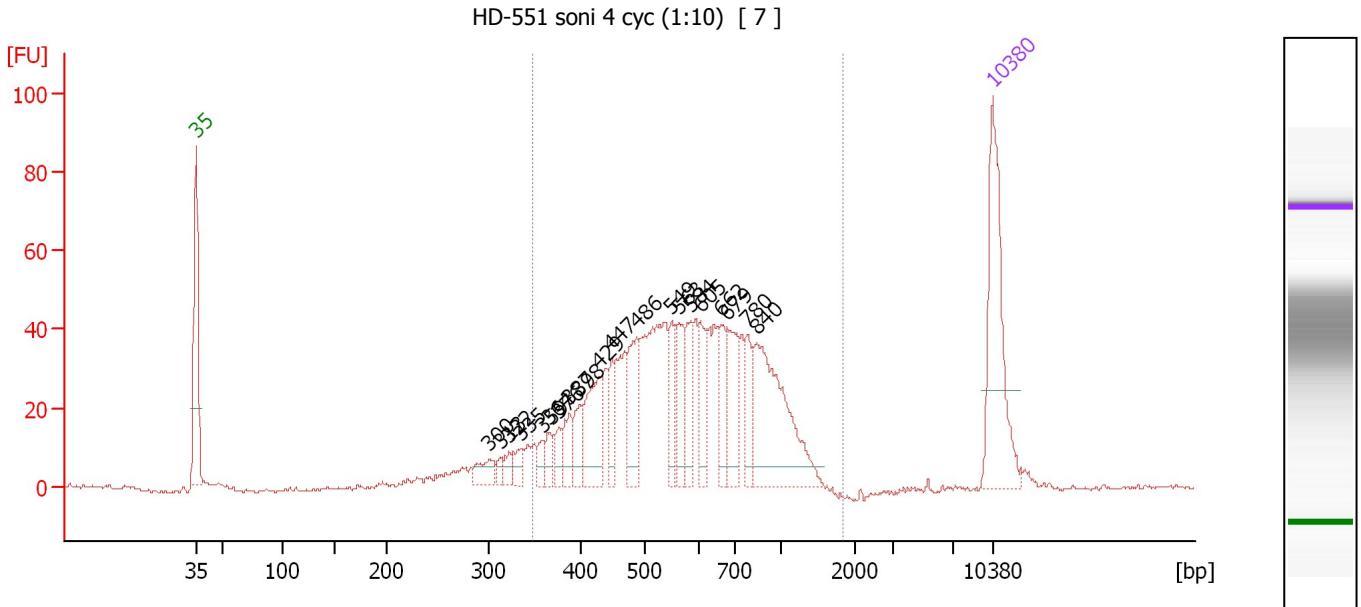
Region table for sample 5 : HD-453 soni 4 cyc (1:5)

From [bp]	To [bp]	Average Size [bp]	Molarity [pmol/l]	Conc. [pg/µl]	Corr. Area	% of Total	Size distribution in CV [%]	Color
360	1,858	699	2,469.0	1,009.40	1,475.6	98	33.9	Blue

Assay Class: High Sensitivity DNA Assay
 Data Path: C:\...ents and Settings\Bioanalyzer\2012-07-23\2012-07-23_001.xad

Created: 7/23/2012 9:29:06 AM
 Modified: 7/23/2012 10:23:49 AM

Electropherogram Summary Continued ...



Overall Results for sample 6 : HD-551 soni 4 cyc (1:10)

Number of peaks found: 20 Corr. Area 1: 880.0
 Noise: 0.5

Peak table for sample 6 : HD-551 soni 4 cyc (1:10)

Peak	Size [bp]	Conc. [pg/µl]	Molarity [pmol/l]	Observations
1	35	125.00	5,411.3	Lower Marker
2	300	16.35	82.5	
3	313	5.83	28.2	
4	322	8.06	37.9	
5	335	11.86	53.6	
6	359	9.95	42.0	
7	364	11.33	47.1	
8	376	11.42	45.9	
9	387	18.94	74.1	
10	398	20.54	78.1	
11	429	45.69	161.3	
12	447	21.47	72.7	
13	486	42.98	133.9	
14	549	25.19	69.5	
15	563	28.38	76.3	
16	584	25.92	67.2	
17	605	26.83	67.2	
18	662	25.00	57.3	
19	679	39.66	88.5	
20	780	20.37	39.6	
21	840	106.64	192.3	
22	10,380	75.00	10.9	Upper Marker

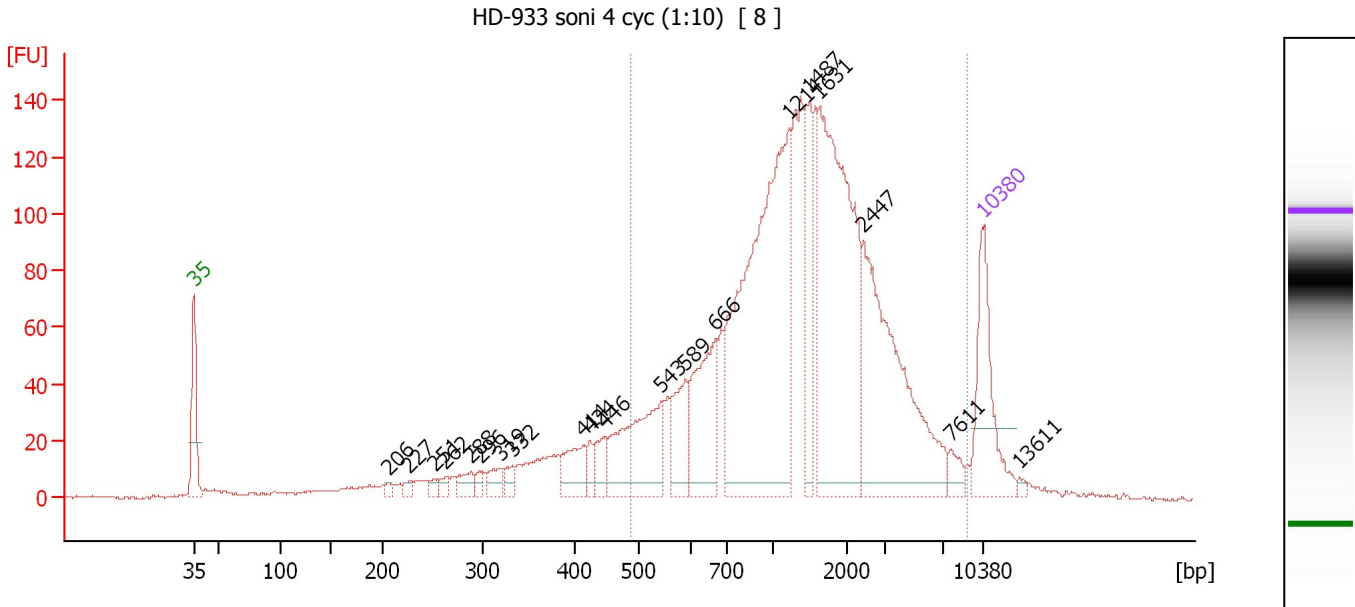
Region table for sample 6 : HD-551 soni 4 cyc (1:10)

From [bp]	To [bp]	Average Size [bp]	Molarity [pmol/l]	Conc. [pg/µl]	Corr. Area	% of Total	Size distribution in CV [%]	Color
348	1,825	622	2,026.1	736.85	880.0	90	33.7	Blue

Assay Class: High Sensitivity DNA Assay
 Data Path: C:\...ents and Settings\Bioanalyzer\2012-07-23\2012-07-23_001.xad

Created: 7/23/2012 9:29:06 AM
 Modified: 7/23/2012 10:23:49 AM

Electropherogram Summary Continued ...



Overall Results for sample 7 : HD-933 soni 4 cyc (1:10)

Number of peaks found: 20 Corr. Area 1: 2,174.1
 Noise: 0.3

Peak table for sample 7 : HD-933 soni 4 cyc (1:10)

Peak	Size [bp]	Conc. [pg/μl]	Molarity [pmol/l]	Observations
1	35	125.00	5,411.3	Lower Marker
2	206	5.12	37.6	
3	227	8.11	54.2	
4	251	8.27	50.0	
5	262	9.23	53.3	
6	288	17.80	93.7	
7	296	8.12	41.5	
8	319	17.38	82.6	
9	332	12.92	58.9	
10	414	42.60	156.0	
11	424	12.48	44.6	
12	446	26.24	89.1	
13	543	125.24	349.3	
14	589	51.06	131.4	
15	666	107.11	243.7	
16	1,214	393.94	491.5	
17	1,487	69.38	70.7	
18	1,631	297.24	276.2	
19	2,447	211.54	131.0	
20	7,611	12.37	2.5	
21	10,380	75.00	10.9	Upper Marker
22	13,611	0.00	0.0	

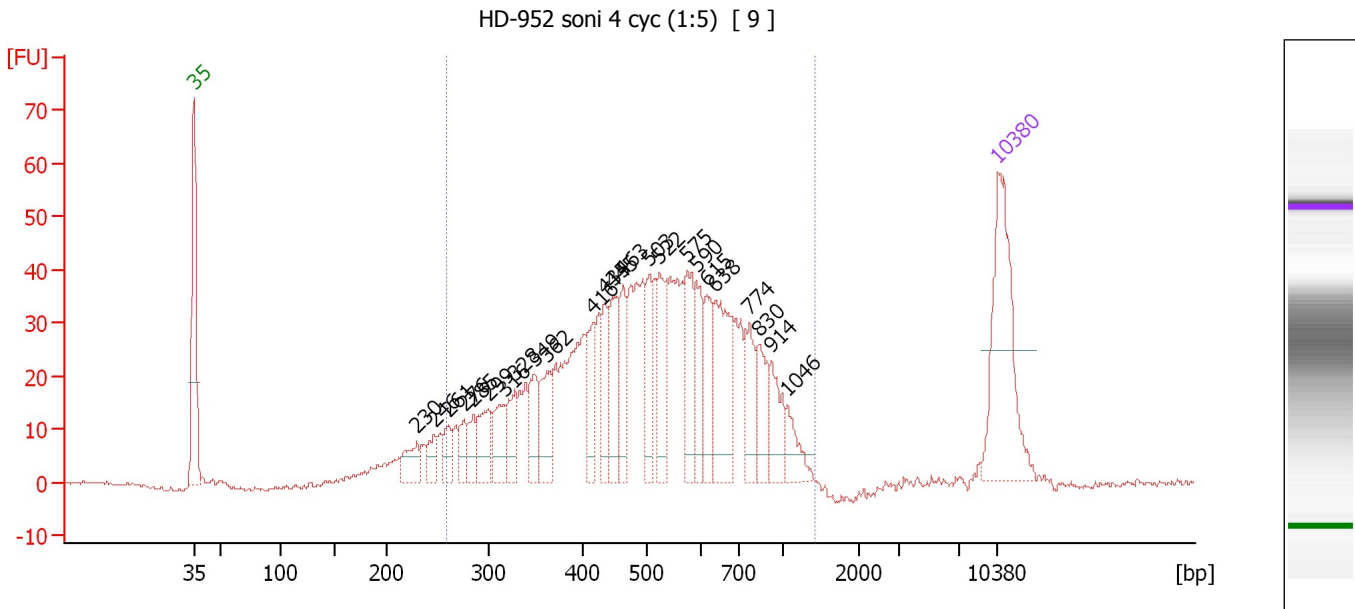
Region table for sample 7 : HD-933 soni 4 cyc (1:10)

From [bp]	To [bp]	Average Size [bp]	Molarity [pmol/l]	Conc. [pg/μl]	Corr. Area	% of Total	Size distribution in CV [%]	Color
486	9,084	1,766	2,010.2	1,458.66	2,174.1	82	79.7	Blue

Assay Class: High Sensitivity DNA Assay
 Data Path: C:\...ents and Settings\Bioanalyzer\2012-07-23\2012-07-23_001.xad

Created: 7/23/2012 9:29:06 AM
 Modified: 7/23/2012 10:23:49 AM

Electropherogram Summary Continued ...



Overall Results for sample 8 : HD-952 soni 4 cyc (1:5)

Number of peaks found: 24 Corr. Area 1: 993.0
 Noise: 0.4

Peak table for sample 8 : HD-952 soni 4 cyc (1:5)

Peak	Size [bp]	Conc. [pg/μl]	Molarity [pmol/l]	Observations
1	35	125.00	5,411.3	Lower Marker
2	230	21.18	139.7	
3	246	13.96	85.9	
4	261	14.97	87.0	
5	276	15.04	82.6	
6	285	15.63	83.2	
7	299	29.24	148.1	
8	316	26.31	126.3	
9	328	26.00	120.2	
10	349	27.21	118.0	
11	362	34.52	144.5	
12	416	25.40	92.5	
13	435	26.26	91.5	
14	445	35.43	120.5	
15	463	29.98	98.2	
16	503	30.97	93.2	
17	522	40.99	118.9	
18	575	41.69	109.9	
19	590	27.50	70.6	
20	615	27.62	68.0	
21	638	60.06	142.6	
22	774	30.37	59.4	
23	830	24.67	45.0	
24	914	23.44	38.8	
25	1,046	15.70	22.7	
26	10,380	75.00	10.9	Upper Marker

Assay Class: High Sensitivity DNA Assay
Data Path: C:\...ents and Settings\Bioanalyzer\2012-07-23\2012-07-23_001.xad

Created: 7/23/2012 9:29:06 AM
Modified: 7/23/2012 10:23:49 AM

Electropherogram Summary Continued ...

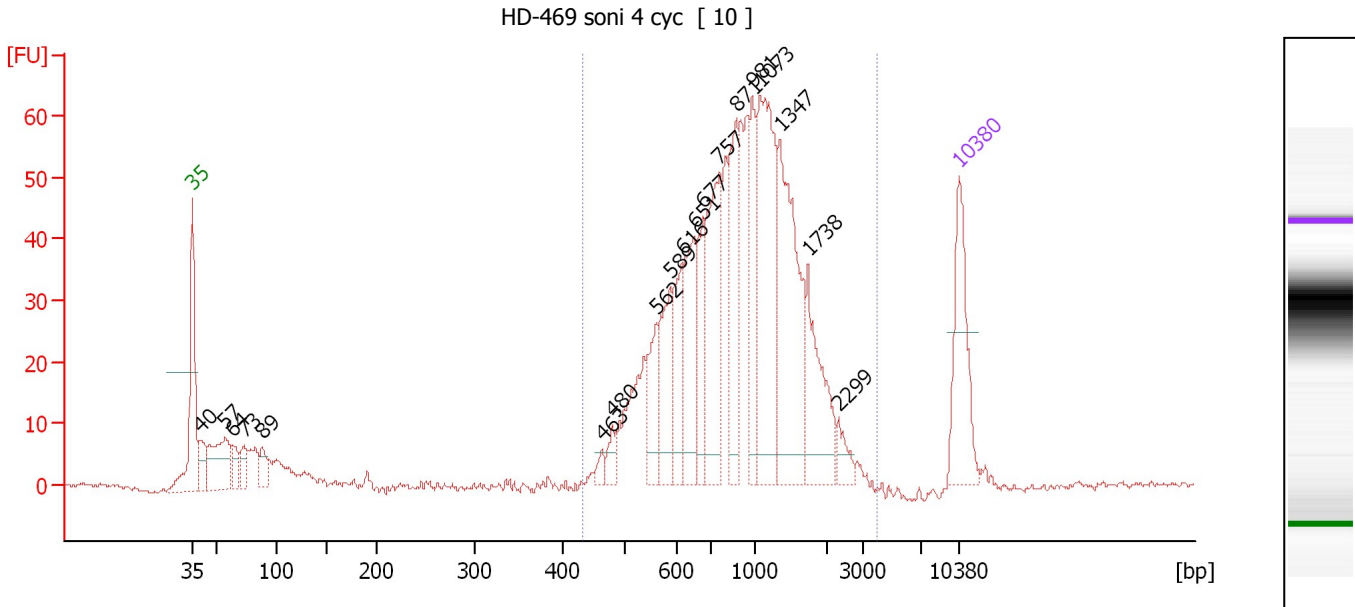
... Region table for sample 8 : HD-952 soni 4 cyc (1:5)

From [bp]	To [bp]	Average Size [bp]	Molarity [pmol/l]	Conc. [pg/μl]	Corr. Area	% of Total	Size distribution in CV [%]	Color
258	1,399	535	3,275.9	991.80	993.0	93	34.9	■

Assay Class: High Sensitivity DNA Assay
 Data Path: C:\...ents and Settings\Bioanalyzer\2012-07-23\2012-07-23_001.xad

Created: 7/23/2012 9:29:06 AM
 Modified: 7/23/2012 10:23:49 AM

Electropherogram Summary Continued ...



Overall Results for sample 9 : HD-469 soni 4 cyc

Number of peaks found: 19 Corr. Area 1: 850.0
 Noise: 0.3

Peak table for sample 9 : HD-469 soni 4 cyc

Peak	Size [bp]	Conc. [pg/μl]	Molarity [pmol/l]	Observations
1	35	125.00	5,411.3	Lower Marker
2	40	38.24	1,452.4	
3	57	92.50	2,448.3	
4	64	23.31	555.3	
5	73	24.19	501.3	
6	89	24.58	420.8	
7	463	9.37	30.7	
8	480	15.62	49.3	
9	562	47.49	128.0	
10	589	75.51	194.2	
11	616	58.70	144.4	
12	651	83.95	195.4	
13	677	56.99	127.6	
14	757	129.60	259.3	
15	871	88.66	154.2	
16	981	62.04	95.8	
17	1,073	179.27	253.0	
18	1,347	167.63	188.6	
19	1,738	77.78	67.8	
20	2,299	14.80	9.8	
21	10,380	75.00	10.9	Upper Marker

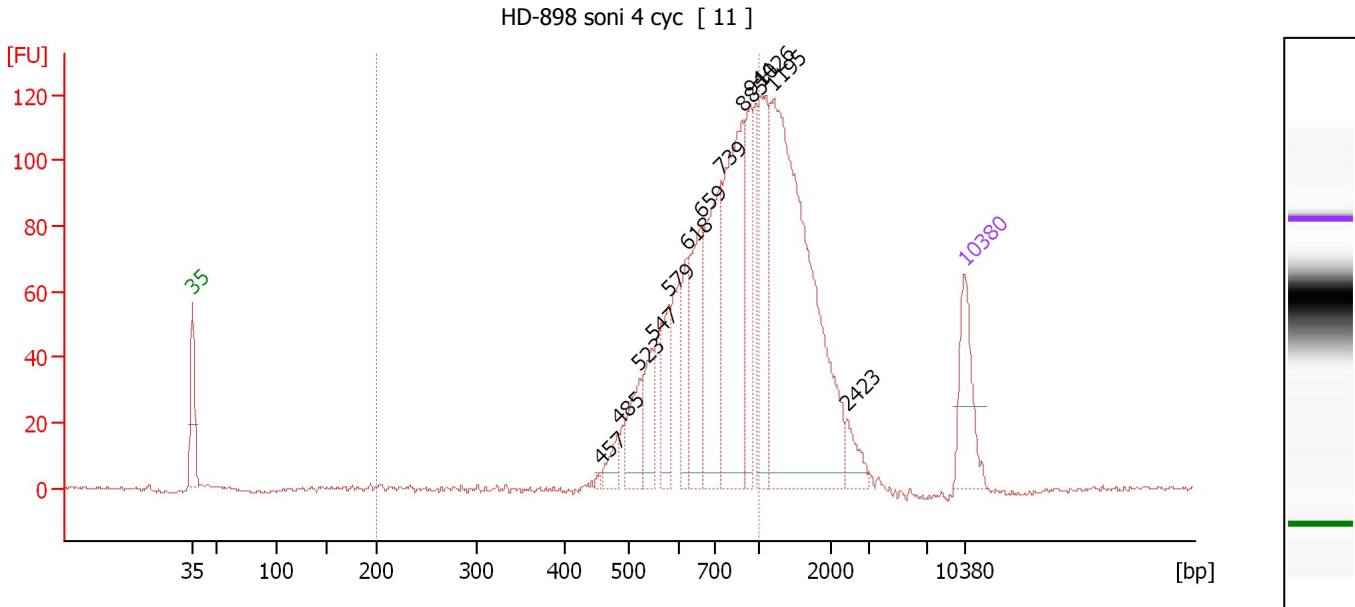
Region table for sample 9 : HD-469 soni 4 cyc

From [bp]	To [bp]	Average Size [bp]	Molarity [pmol/l]	Conc. [pg/μl]	Corr. Area	% of Total	Size distribution in CV [%]	Color
432	3,986	1,018	2,415.2	1,323.96	850.0	88	44.9	Blue

Assay Class: High Sensitivity DNA Assay
 Data Path: C:\...ents and Settings\Bioanalyzer\2012-07-23\2012-07-23_001.xad

Created: 7/23/2012 9:29:06 AM
 Modified: 7/23/2012 10:23:49 AM

Electropherogram Summary Continued ...



Overall Results for sample 10 : HD-898 soni 4 cyc

Number of peaks found: 13 Corr. Area 1: 1,009.4
 Noise: 0.4

Peak table for sample 10 : HD-898 soni 4 cyc

Peak	Size [bp]	Conc. [pg/µl]	Molarity [pmol/l]	Observations
1	35	125.00	5,411.3	Lower Marker
2	457	4.20	13.9	
3	485	29.71	92.8	
4	523	70.09	203.0	
5	547	68.26	189.2	
6	579	69.33	181.5	
7	618	70.80	173.5	
8	659	148.68	341.8	
9	739	202.14	414.2	
10	885	275.47	471.4	
11	944	105.94	170.1	
12	1,026	161.41	238.3	
13	1,195	590.64	748.8	
14	2,423	28.03	17.5	
15	10,380	75.00	10.9	Upper Marker

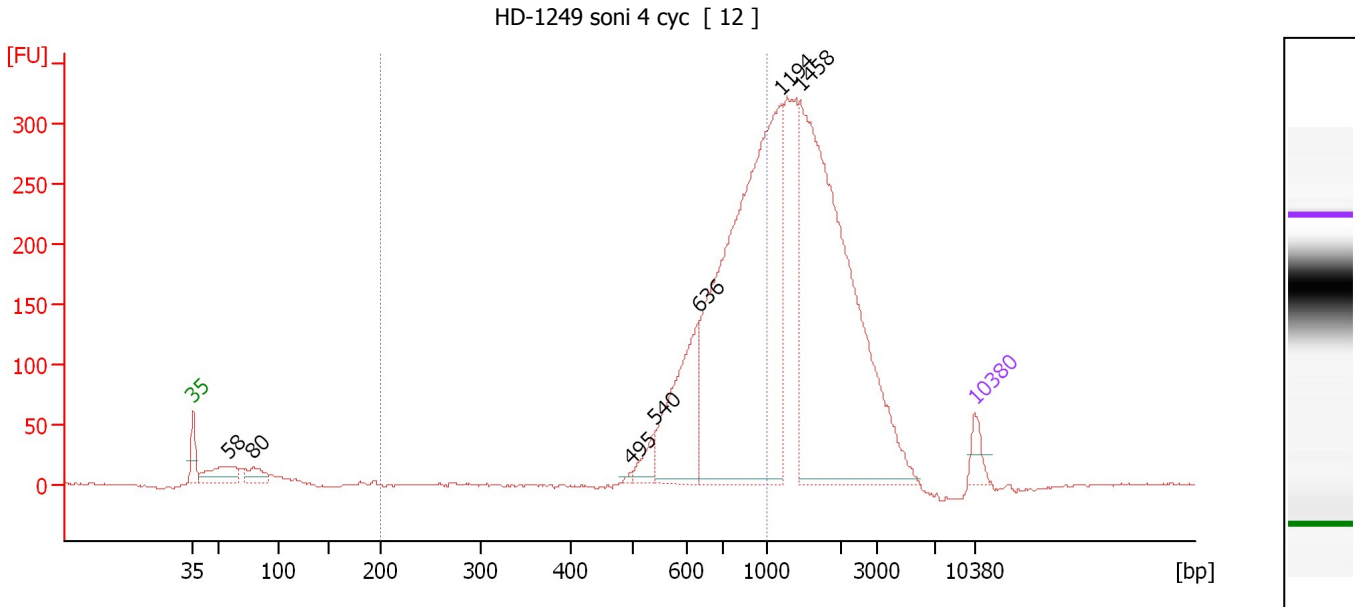
Region table for sample 10 : HD-898 soni 4 cyc

From [bp]	To [bp]	Average Size [bp]	Molarity [pmol/l]	Conc. [pg/µl]	Corr. Area	% of Total	Size distribution in CV [%]	Color
200	1,000	717	2,872.2	1,284.48	1,009.4	60	20.8	Blue

Assay Class: High Sensitivity DNA Assay
 Data Path: C:\...ents and Settings\Bioanalyzer\2012-07-23\2012-07-23_001.xad

Created: 7/23/2012 9:29:06 AM
 Modified: 7/23/2012 10:23:49 AM

Electropherogram Summary Continued ...



Overall Results for sample 11 : HD-1249 soni 4 cyc

Number of peaks found: 7 Corr. Area 1: 1,827.3
 Noise: 0.5

Peak table for sample 11 : HD-1249 soni 4 cyc

Peak	Size [bp]	Conc. [pg/μl]	Molarity [pmol/l]	Observations
1	35	125.00	5,411.3	Lower Marker
2	58	259.48	6,740.4	
3	80	143.99	2,739.4	
4	495	13.94	42.7	
5	540	115.11	323.2	
6	636	726.01	1,730.1	
7	1,194	2,918.32	3,703.8	
8	1,458	2,616.27	2,719.0	
9	10,380	75.00	10.9	Upper Marker

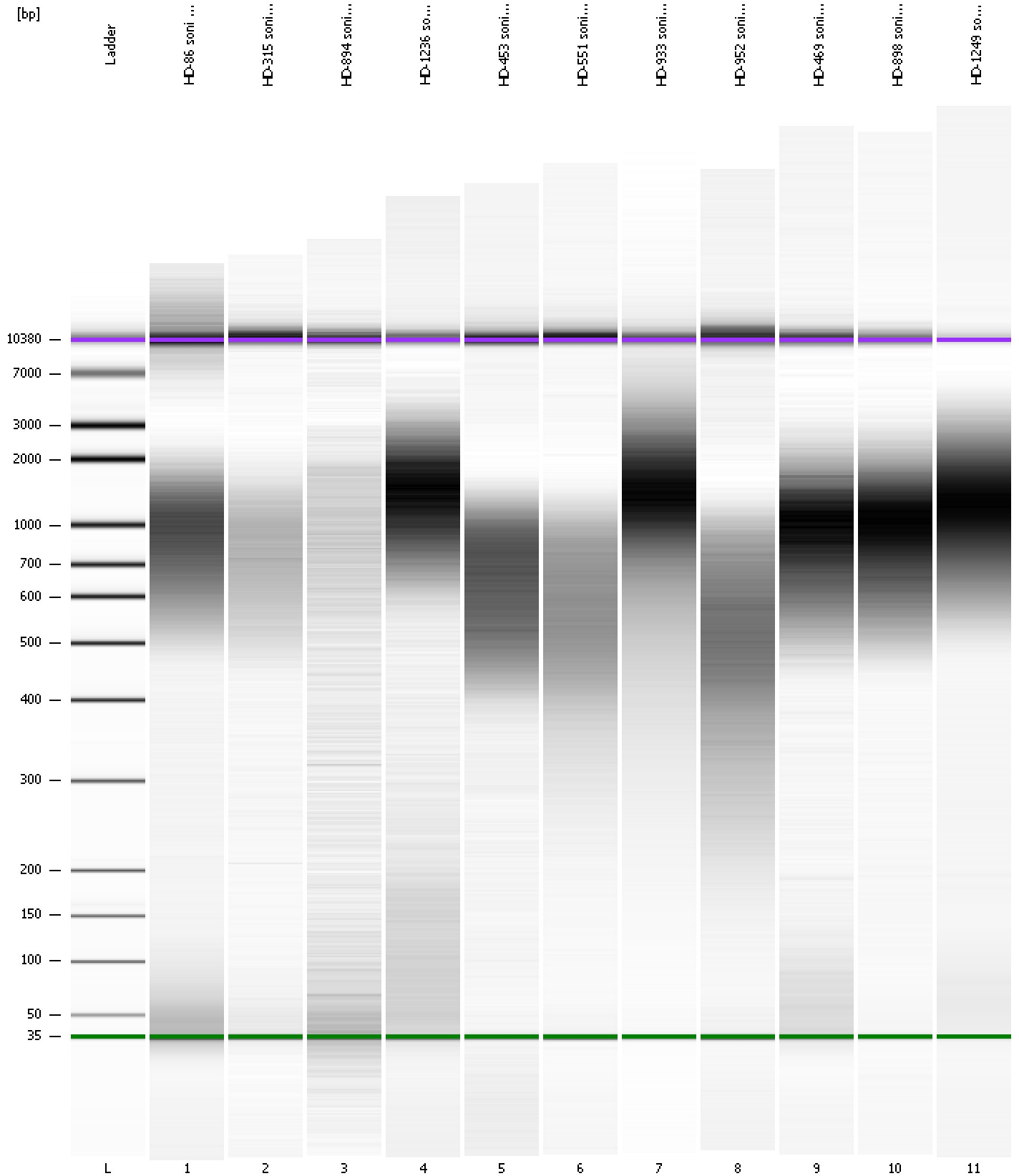
Region table for sample 11 : HD-1249 soni 4 cyc

From [bp]	To [bp]	Average Size [bp]	Molarity [pmol/l]	Conc. [pg/μl]	Corr. Area	% of Total	Size distribution in CV [%]	Color
200	1,000	755	6,859.8	3,287.84	1,827.3	40	18.4	Blue

Assay Class: High Sensitivity DNA Assay
Data Path: C:\...ents and Settings\Bioanalyzer\2012-07-23\2012-07-23_001.xad

Created: 7/23/2012 9:29:06 AM
Modified: 7/23/2012 10:23:49 AM

Gel Image



Assay Class: High Sensitivity DNA Assay
Data Path: C:\...ents and Settings\Bioanalyzer\2012-07-23\2012-07-23_001.xad

Created: 7/23/2012 9:29:06 AM
Modified: 7/23/2012 10:23:49 AM

Curves

Standard Curve

