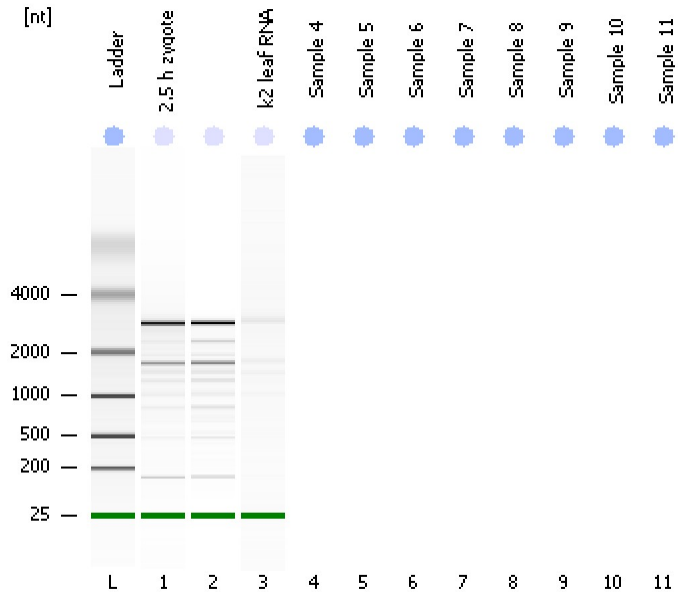


Assay Class: Eukaryote Total RNA Pico  
Data Path: C:\...ents and Settings\Bioanalyzer\2012-07-23\2012-07-23\_002.xad

Created: 7/23/2012 12:22:03 PM  
Modified: 7/23/2012 12:33:32 PM

**Electrophoresis File Run Summary**



Instrument Information:

Instrument Name: DE13701086      Firmware: C.01.069  
Serial#: DE13701086      Type: G2938B

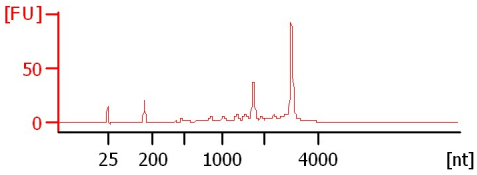
Assay Information:

Assay Origin Path: C:\Program Files\Agilent\2100 bioanalyzer\2100 expert\assays\RNA\Eukaryote Total RNA Pico Series II.xsy  
Assay Class: Eukaryote Total RNA Pico  
Version: 2.6  
Assay Comments: Total RNA Analysis pg sensitivity (Eukaryote)  
© Copyright 2003 - 2009 Agilent Technologies, Inc.

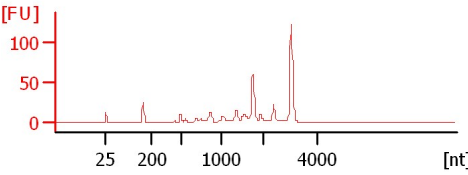
Chip Information:

Chip Lot #:  
Reagent Kit Lot #:  
Chip Comments:

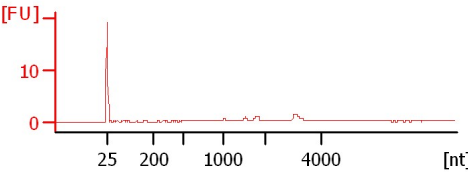
**2.5 h zygote**  
RIN: 8.10



**k2 leaf RNA**  
RIN: 7.90



**Ladder**  
RIN: 7.10



Assay Class: Eukaryote Total RNA Pico  
 Data Path: C:\...ents and Settings\Bioanalyzer\2012-07-23\2012-07-23\_002.xad

Created: 7/23/2012 12:22:03 PM  
 Modified: 7/23/2012 12:33:32 PM

**Electrophoresis File Run Summary (Chip Summary)**

Sample Name	Sample Comment	Status	Result Label	Result Color
2.5 h zygote		✓	RIN: 8.10	
		✓	RIN: 7.90	
k2 leaf RNA		✓	RIN: 7.10	
Sample 4				
Sample 5				
Sample 6				
Sample 7				
Sample 8				
Sample 9				
Sample 10				
Sample 11				
Ladder		✓	All Other Samples	

**Chip Lot #**

**Reagent Kit Lot #**

**Chip Comments :**

Assay Class: Eukaryote Total RNA Pico  
Data Path: C:\...ents and Settings\Bioanalyzer\2012-07-23\2012-07-23\_002.xad

Created: 7/23/2012 12:22:03 PM  
Modified: 7/23/2012 12:33:32 PM

**Electrophoresis Assay Details**

**General Analysis Settings**

Number of Available Sample and Ladder Wells (Max.) : 12  
Minimum Visible Range [s] : 17  
Maximum Visible Range [s] : 70  
Start Analysis Time Range [s] : 18  
End Analysis Time Range [s] : 69  
Ladder Concentration [pg/ $\mu$ l] : 1000  
Lower Marker Concentration [pg/ $\mu$ l] : 0  
Upper Marker Concentration [pg/ $\mu$ l] : 0  
Used Lower Marker for Quantitation  
Standard Curve Fit is Logarithmic  
Show Data Aligned to Lower Marker

**Integrator Settings**

Integration Start Time [s] : 18  
Integration End Time [s] : 69  
Slope Threshold : 0.6  
Height Threshold [FU] : 0.5  
Area Threshold : 0.2  
Width Threshold [s] : 0.3  
Baseline Plateau [s] : 6

**Filter Settings**

Filter Width [s] : 0.5  
Polynomial Order : 4

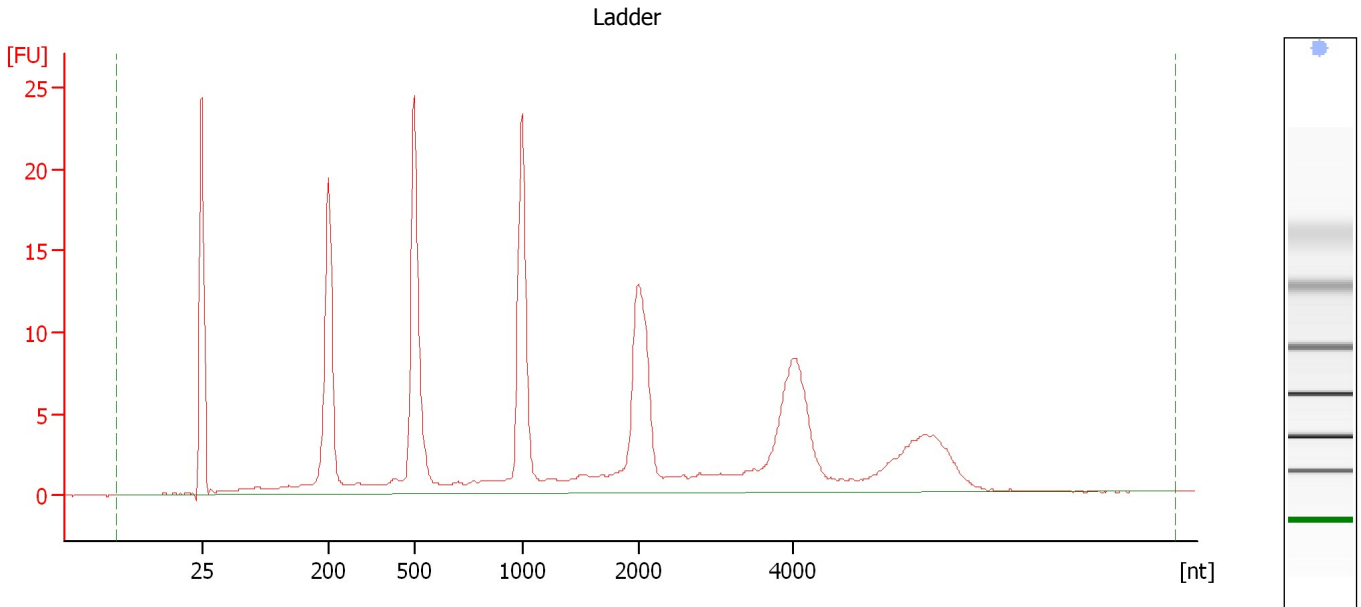
**Ladder**

Ladder Peak	Size
1	25
2	200
3	500
4	1000
5	2000
6	4000

Assay Class: Eukaryote Total RNA Pico  
Data Path: C:\...ents and Settings\Bioanalyzer\2012-07-23\2012-07-23\_002.xad

Created: 7/23/2012 12:22:03 PM  
Modified: 7/23/2012 12:33:32 PM

**Electropherogram Summary**



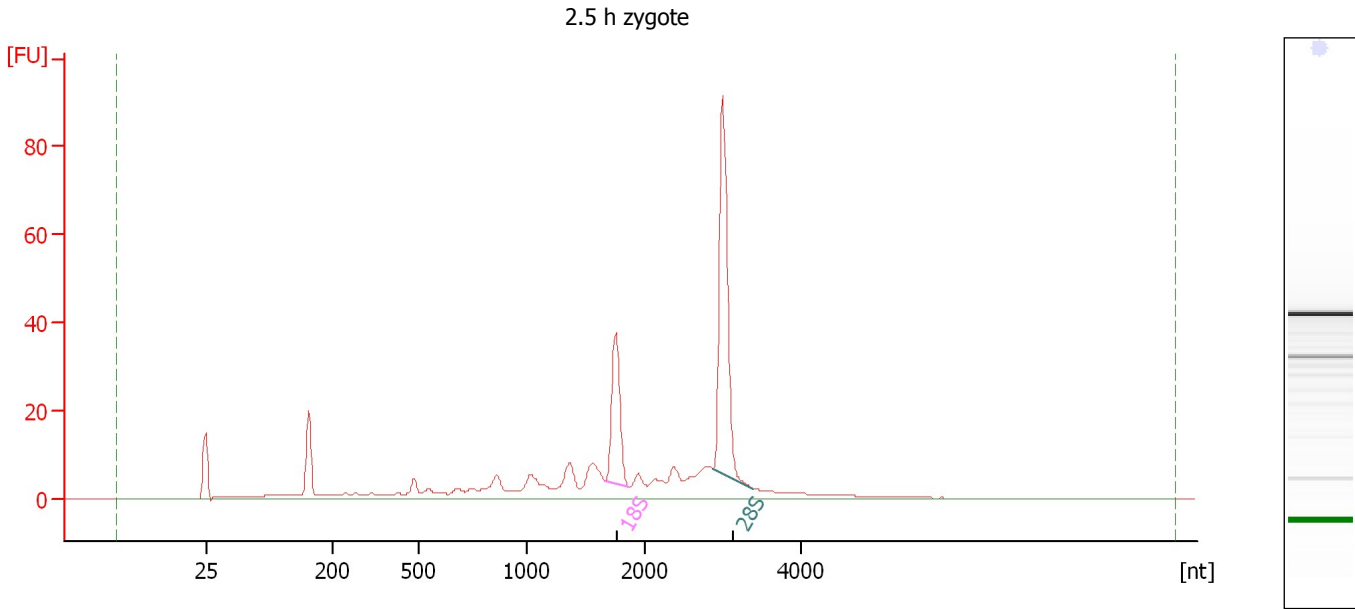
**Overall Results for Ladder**

RNA Area:	199.5	Result Flagging Color:	<span style="background-color: #add8e6; border: 1px solid black; display: inline-block; width: 20px; height: 10px;"></span>
RNA Concentration:	1,000 pg/μl	Result Flagging Label:	All Other Samples

Assay Class: Eukaryote Total RNA Pico  
Data Path: C:\...ents and Settings\Bioanalyzer\2012-07-23\2012-07-23\_002.xad

Created: 7/23/2012 12:22:03 PM  
Modified: 7/23/2012 12:33:32 PM

**Electropherogram Summary Continued ...**



**Overall Results for sample 1 : 2.5 h zygote**

RNA Area: 310.2                      RNA Integrity Number (RIN): 8.1 (B.02.08)  
RNA Concentration: 1,555 pg/μl                      Result Flagging Color:   
rRNA Ratio [28s / 18s]: 2.2                      Result Flagging Label: RIN: 8.10

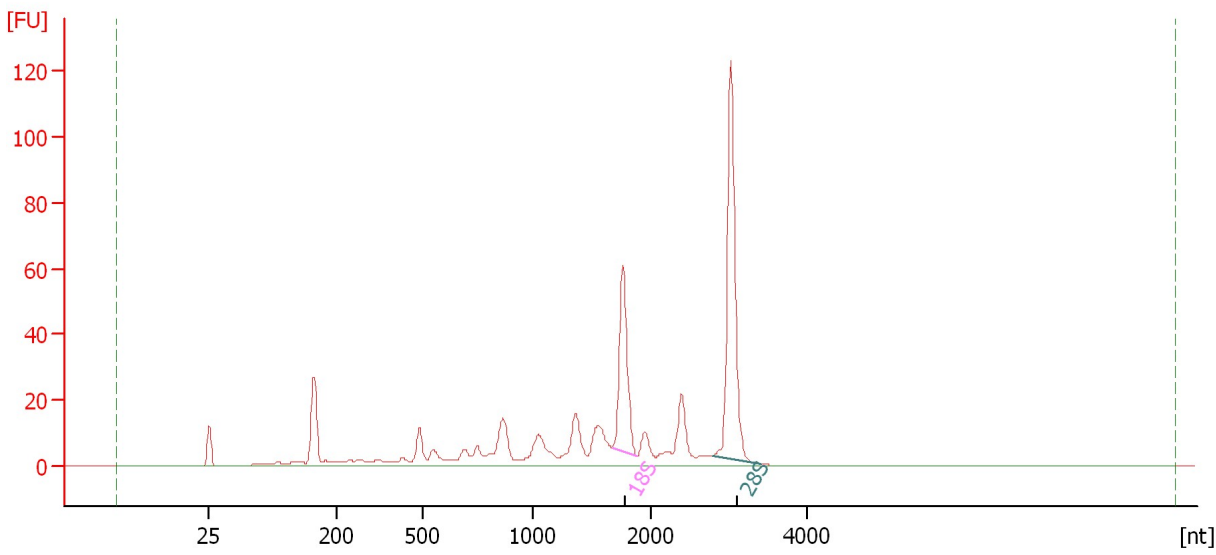
**Fragment table for sample 1 : 2.5 h zygote**

Name	Start Size [nt]	End Size [nt]	Area	% of total Area
18S	1,666	1,875	34.3	11.0
28S	2,882	3,389	76.5	24.7

Assay Class: Eukaryote Total RNA Pico  
Data Path: C:\...ents and Settings\Bioanalyzer\2012-07-23\2012-07-23\_002.xad

Created: 7/23/2012 12:22:03 PM  
Modified: 7/23/2012 12:33:32 PM

**Electropherogram Summary Continued ...**



**Overall Results for sample 2 :**

RNA Area:	416.9	RNA Integrity Number (RIN):	7.9 (B.02.08)
RNA Concentration:	2,090 pg/μl	Result Flagging Color:	<span style="background-color: #ccccff; border: 1px solid black; display: inline-block; width: 20px; height: 10px;"></span>
rRNA Ratio [28s / 18s]:	1.9	Result Flagging Label:	RIN: 7.90

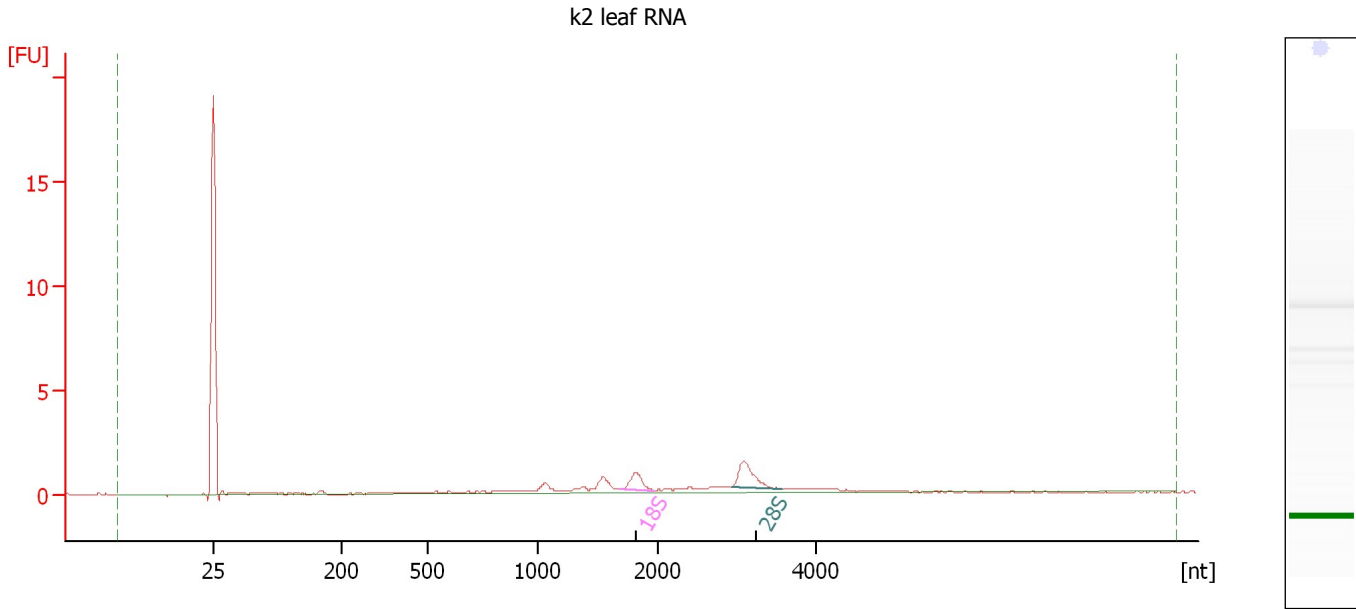
**Fragment table for sample 2 :**

Name	Start Size [nt]	End Size [nt]	Area	% of total Area
18S	1,681	1,889	56.0	13.4
28S	2,800	3,413	108.9	26.1

Assay Class: Eukaryote Total RNA Pico  
Data Path: C:\...ents and Settings\Bioanalyzer\2012-07-23\2012-07-23\_002.xad

Created: 7/23/2012 12:22:03 PM  
Modified: 7/23/2012 12:33:32 PM

**Electropherogram Summary Continued ...**



**Overall Results for sample 3 : k2 leaf RNA**

RNA Area:	15.6	RNA Integrity Number (RIN):	7.1 (B.02.08)
RNA Concentration:	78 pg/μl	Result Flagging Color:	<span style="background-color: #ccccff; border: 1px solid black; display: inline-block; width: 20px; height: 10px;"></span>
rRNA Ratio [28s / 18s]:	1.6	Result Flagging Label:	RIN: 7.10

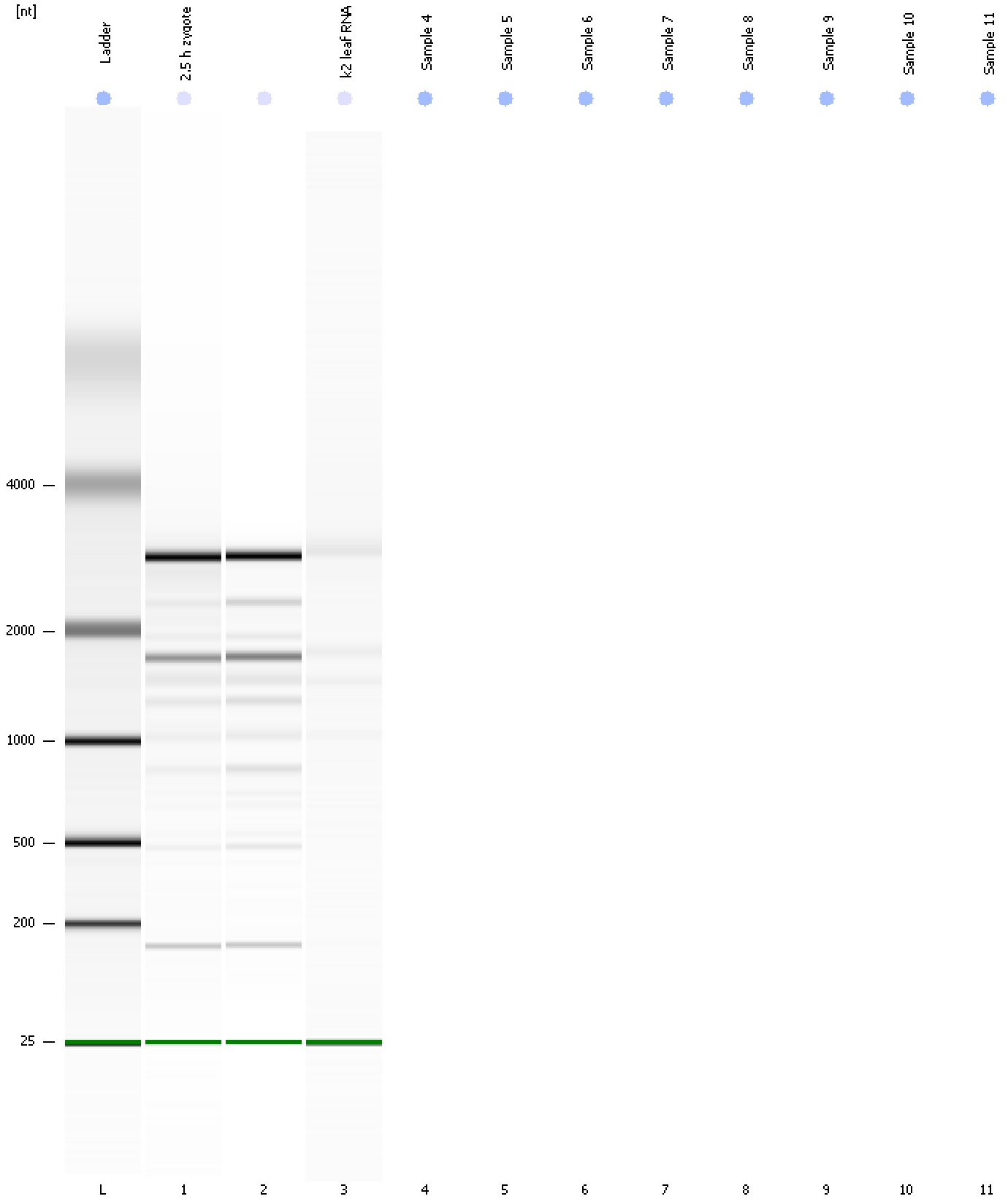
**Fragment table for sample 3 : k2 leaf RNA**

Name	Start Size [nt]	End Size [nt]	Area	% of total Area
18S	1,677	1,974	1.3	8.3
28S	2,949	3,586	2.1	13.7

Assay Class: Eukaryote Total RNA Pico  
Data Path: C:\...ents and Settings\Bioanalyzer\2012-07-23\2012-07-23\_002.xad

Created: 7/23/2012 12:22:03 PM  
Modified: 7/23/2012 12:33:32 PM

**Gel Image**



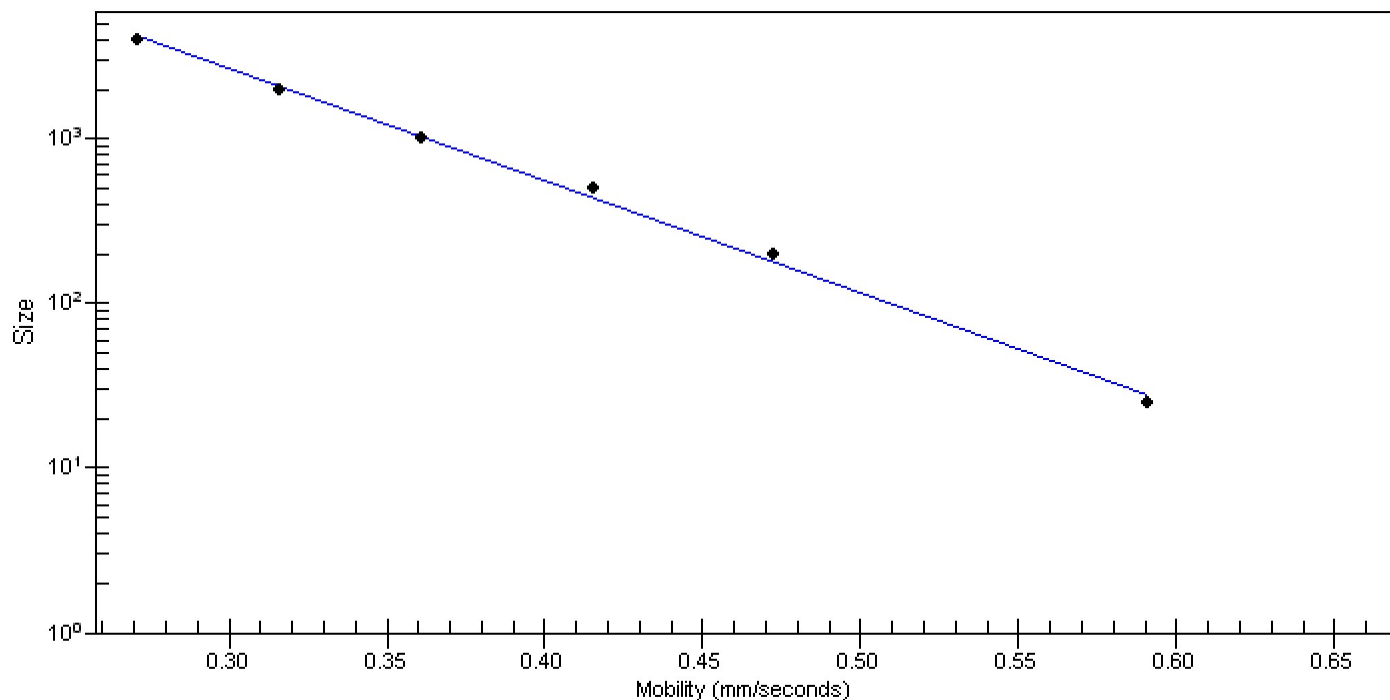


Assay Class: Eukaryote Total RNA Pico  
Data Path: C:\...ents and Settings\Bioanalyzer\2012-07-23\2012-07-23\_002.xad

Created: 7/23/2012 12:22:03 PM  
Modified: 7/23/2012 12:33:32 PM

**Curves**

**Standard Curve**



Assay Class: Eukaryote Total RNA Pico  
Data Path: C:\...ents and Settings\Bioanalyzer\2012-07-23\2012-07-23\_002.xad

Created: 7/23/2012 12:22:03 PM  
Modified: 7/23/2012 12:33:32 PM

**Invalid Samples**

- Sample 4 has not been run, no results available.
- Sample 5 has not been run, no results available.
- Sample 6 has not been run, no results available.
- Sample 7 has not been run, no results available.
- Sample 8 has not been run, no results available.
- Sample 9 has not been run, no results available.
- Sample 10 has not been run, no results available.
- Sample 11 has not been run, no results available.