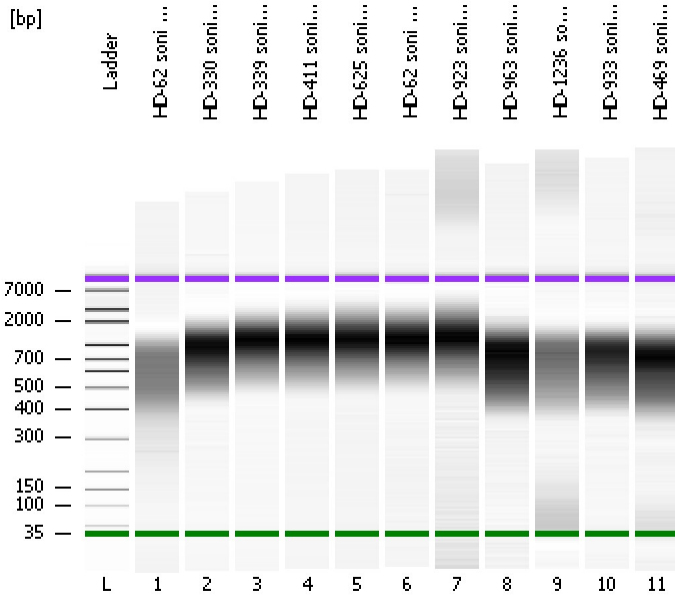


Assay Class: High Sensitivity DNA Assay
Data Path: C:\...ents and Settings\Bioanalyzer\2012-07-23\2012-07-23_003.xad

Created: 7/23/2012 2:00:27 PM
Modified: 7/24/2012 9:22:57 AM

Electrophoresis File Run Summary



Instrument Information:

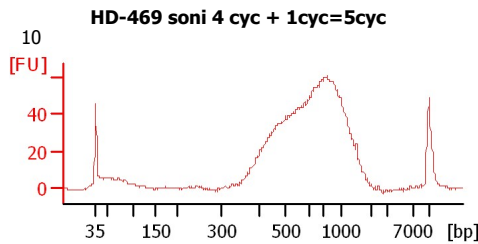
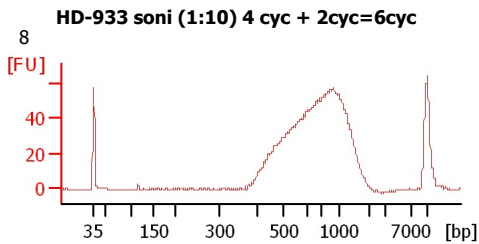
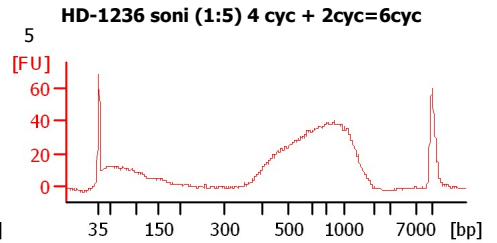
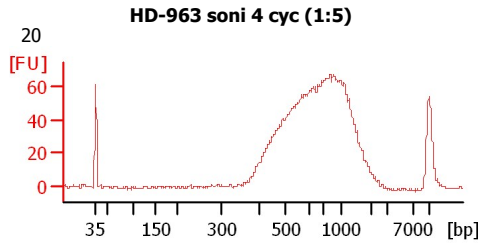
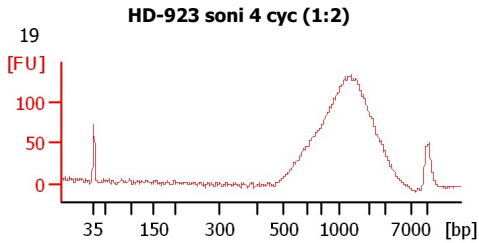
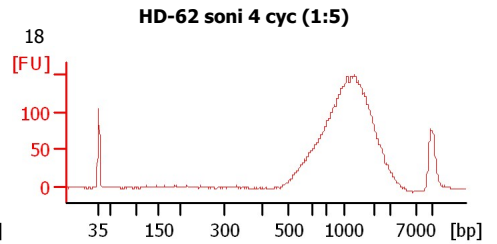
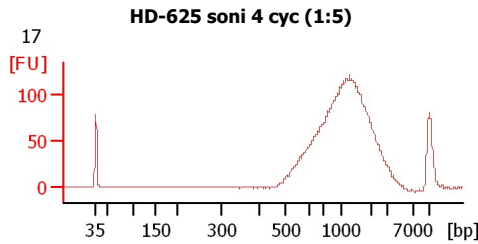
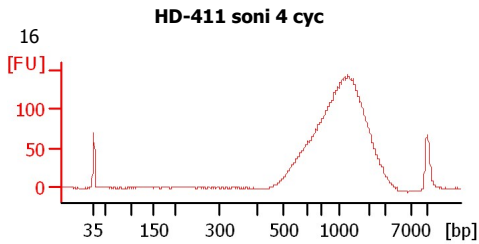
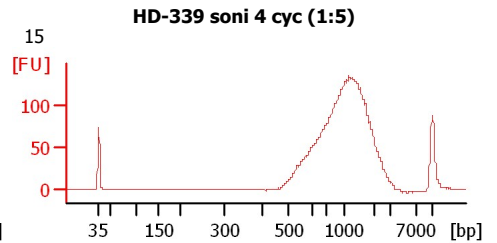
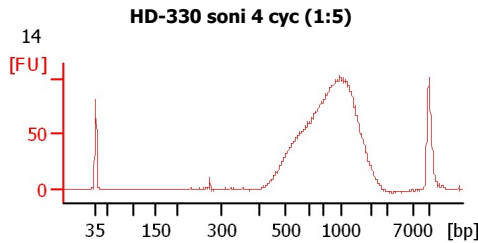
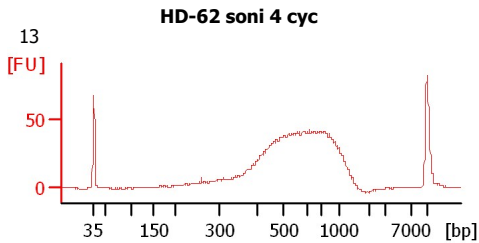
Instrument Name: DE13701086 Firmware: C.01.069
Serial#: DE13701086 Type: G2938B

Assay Information:

Assay Origin Path: C:\Program Files\Agilent\2100 bioanalyzer\2100 expert\assays\dsDNA\High Sensitivity DNA.xsy
Assay Class: High Sensitivity DNA Assay
Version: 1.03
Assay Comments: Copyright © 2003-2010 Agilent Technologies

Chip Information:

Chip Lot #:
Reagent Kit Lot #:
Chip Comments:



Assay Class: High Sensitivity DNA Assay
Data Path: C:\...ents and Settings\Bioanalyzer\2012-07-23\2012-07-23_003.xad

Created: 7/23/2012 2:00:27 PM
Modified: 7/24/2012 9:22:57 AM

Electrophoresis File Run Summary (Chip Summary)

Sample Name	Sample Comment	Rest. Digest	Status	Observation	Result Label	Result Color
HD-62 soni 4 cyc	13	<input type="checkbox"/>	✓			
HD-330 soni 4 cyc (1:5)	14	<input type="checkbox"/>	✓			
HD-339 soni 4 cyc (1:5)	15	<input type="checkbox"/>	✓			
HD-411 soni 4 cyc	16	<input type="checkbox"/>	✓			
HD-625 soni 4 cyc (1:5)	17	<input type="checkbox"/>	✓			
HD-62 soni 4 cyc (1:5)	18	<input type="checkbox"/>	✓			
HD-923 soni 4 cyc (1:2)	19	<input type="checkbox"/>	✓			
HD-963 soni 4 cyc (1:5)	20	<input type="checkbox"/>	✓			
HD-1236 soni (1:5) 4 cyc + 2cyc=6cyc	5	<input type="checkbox"/>	✓			
HD-933 soni (1:10) 4 cyc + 2cyc=6cyc	8	<input type="checkbox"/>	✓			
HD-469 soni 4 cyc + 1cyc=5cyc	10	<input type="checkbox"/>	✓			
Ladder		<input type="checkbox"/>	✓			

Chip Lot #**Reagent Kit Lot #****Chip Comments :**

Assay Class: High Sensitivity DNA Assay
Data Path: C:\...ents and Settings\Bioanalyzer\2012-07-23\2012-07-23_003.xad

Created: 7/23/2012 2:00:27 PM
Modified: 7/24/2012 9:22:57 AM

Electrophoresis Assay Details

General Analysis Settings

Number of Available Sample and Ladder Wells (Max.) : 12
Minimum Visible Range [s] : 32
Maximum Visible Range [s] : 138
Start Analysis Time Range [s] : 33
End Analysis Time Range [s] : 137.5
Ladder Concentration [pg/μl] : 1950
Uses Standard Area for Ladder Fragments
Lower Marker Concentration [pg/μl] : 125
Upper Marker Concentration [pg/μl] : 75
Used Upper Marker for Quantitation
Standard Curve Fit is Point to Point
Show Data Aligned to Lower and Upper Marker

Integrator Settings

Integration Start Time [s] : 33.05
Integration End Time [s] : 137
Slope Threshold : 0.8
Height Threshold [FU] : 5
Area Threshold : 0.1
Width Threshold [s] : 0.6
Baseline Plateau [s] : 0.5

Filter Settings

Filter Width [s] : 0.5
Polynomial Order : 4

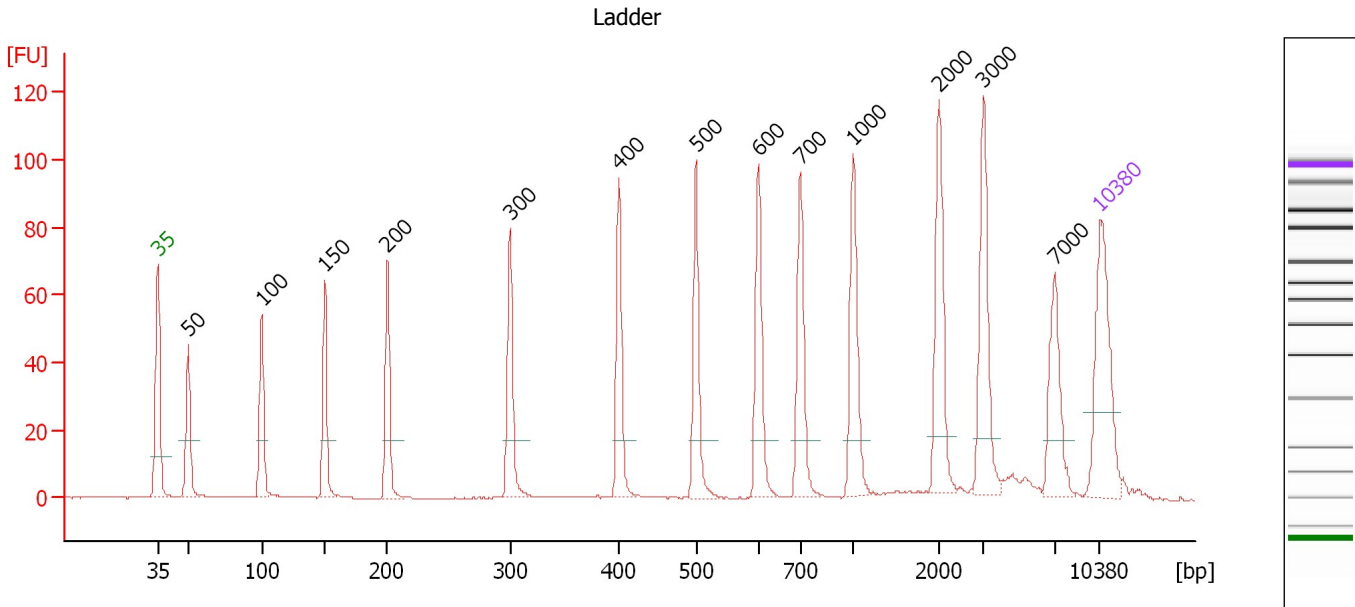
Ladder

Ladder Peak	Size	Area
1	35	160
2	50	210
3	100	208
4	150	221
5	200	242
6	300	270
7	400	305
8	500	306
9	600	336
10	700	321
11	1000	366
12	2000	413
13	3000	411
14	7000	400
15	10380	214

Assay Class: High Sensitivity DNA Assay
 Data Path: C:\...ents and Settings\Bioanalyzer\2012-07-23\2012-07-23_003.xad

Created: 7/23/2012 2:00:27 PM
 Modified: 7/24/2012 9:22:57 AM

Electropherogram Summary



Overall Results for Ladder

Noise: 0.1

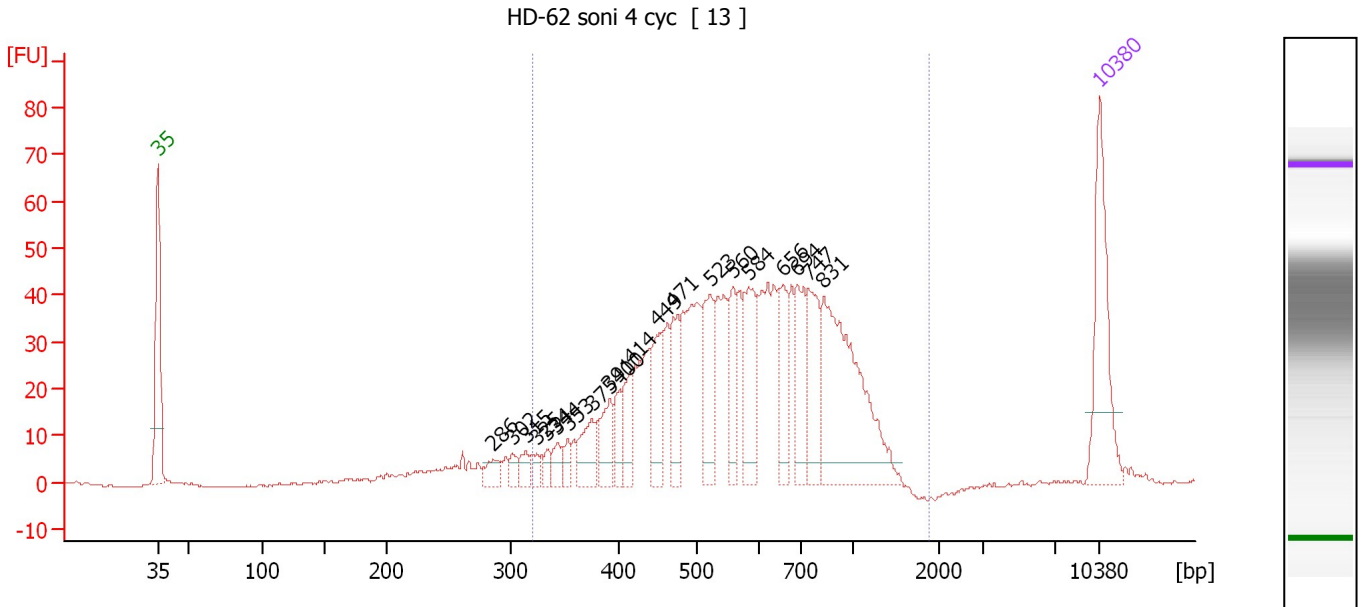
Peak table for Ladder

Peak	Size [bp]	Conc. [pg/µl]	Molarity [pmol/l]	Observations
1	35	125.00	5,411.3	Lower Marker
2	50	150.00	4,545.5	Ladder Peak
3	100	150.00	2,272.7	Ladder Peak
4	150	150.00	1,515.2	Ladder Peak
5	200	150.00	1,136.4	Ladder Peak
6	300	150.00	757.6	Ladder Peak
7	400	150.00	568.2	Ladder Peak
8	500	150.00	454.5	Ladder Peak
9	600	150.00	378.8	Ladder Peak
10	700	150.00	324.7	Ladder Peak
11	1,000	150.00	227.3	Ladder Peak
12	2,000	150.00	113.6	Ladder Peak
13	3,000	150.00	75.8	Ladder Peak
14	7,000	150.00	32.5	Ladder Peak
15	10,380	75.00	10.9	Upper Marker

Assay Class: High Sensitivity DNA Assay
 Data Path: C:\...ents and Settings\Bioanalyzer\2012-07-23\2012-07-23_003.xad

Created: 7/23/2012 2:00:27 PM
 Modified: 7/24/2012 9:22:57 AM

Electropherogram Summary Continued ...



Overall Results for sample 1 : HD-62 soni 4 cyc

Number of peaks found: 20 Corr. Area 1: 885.9
 Noise: 0.2

Peak table for sample 1 : HD-62 soni 4 cyc

Peak	Size [bp]	Conc. [pg/μl]	Molarity [pmol/l]	Observations
1	35	125.00	5,411.3	Lower Marker
2	286	16.99	89.9	
3	302	9.79	49.2	
4	315	12.06	58.1	
5	325	8.94	41.7	
6	334	9.40	42.7	
7	344	14.91	65.7	
8	353	11.45	49.2	
9	375	32.55	131.4	
10	391	34.31	132.8	
11	400	22.42	85.0	
12	414	25.55	93.4	
13	449	47.41	159.8	
14	471	43.69	140.5	
15	523	61.38	177.9	
16	560	39.16	106.0	
17	584	64.37	167.0	
18	656	43.76	101.0	
19	694	49.50	108.1	
20	747	60.48	122.7	
21	831	177.94	324.5	
22	10,380	75.00	10.9	Upper Marker

Region table for sample 1 : HD-62 soni 4 cyc

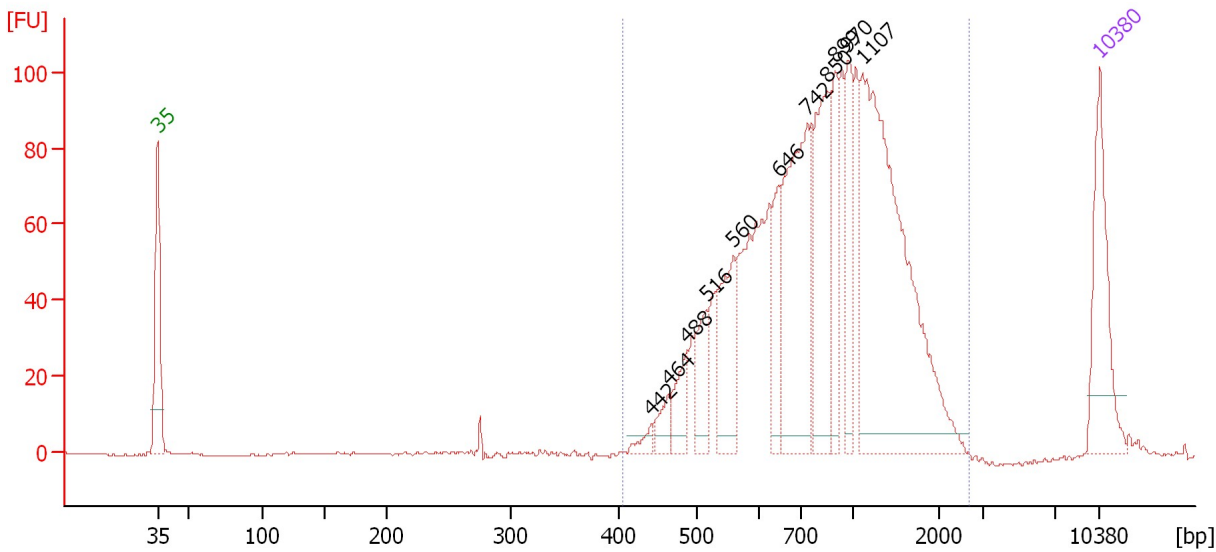
From [bp]	To [bp]	Average Size [bp]	Molarity [pmol/l]	Conc. [pg/μl]	Corr. Area	% of Total	Size distribution in CV [%]	Color
320	1,876	624	3,153.9	1,142.55	885.9	94	34.1	Blue

Assay Class: High Sensitivity DNA Assay
 Data Path: C:\...ents and Settings\Bioanalyzer\2012-07-23\2012-07-23_003.xad

Created: 7/23/2012 2:00:27 PM
 Modified: 7/24/2012 9:22:57 AM

Electropherogram Summary Continued ...

HD-330 soni 4 cyc (1:5) [14]



Overall Results for sample 2 : HD-330 soni 4 cyc (1:5)

Number of peaks found: 11 Corr. Area 1: 1,434.9
 Noise: 0.2

Peak table for sample 2 : HD-330 soni 4 cyc (1:5)

Peak	Size [bp]	Conc. [pg/µl]	Molarity [pmol/l]	Observations
1	35	125.00	5,411.3	Lower Marker
2	442	9.91	33.9	
3	464	19.78	64.6	
4	488	33.57	104.3	
5	516	40.28	118.2	
6	560	82.25	222.5	
7	646	47.51	111.4	
8	742	194.10	396.6	
9	850	121.56	216.7	
10	899	65.68	110.7	
11	970	60.44	94.4	
12	1,107	343.06	469.7	
13	10,380	75.00	10.9	Upper Marker

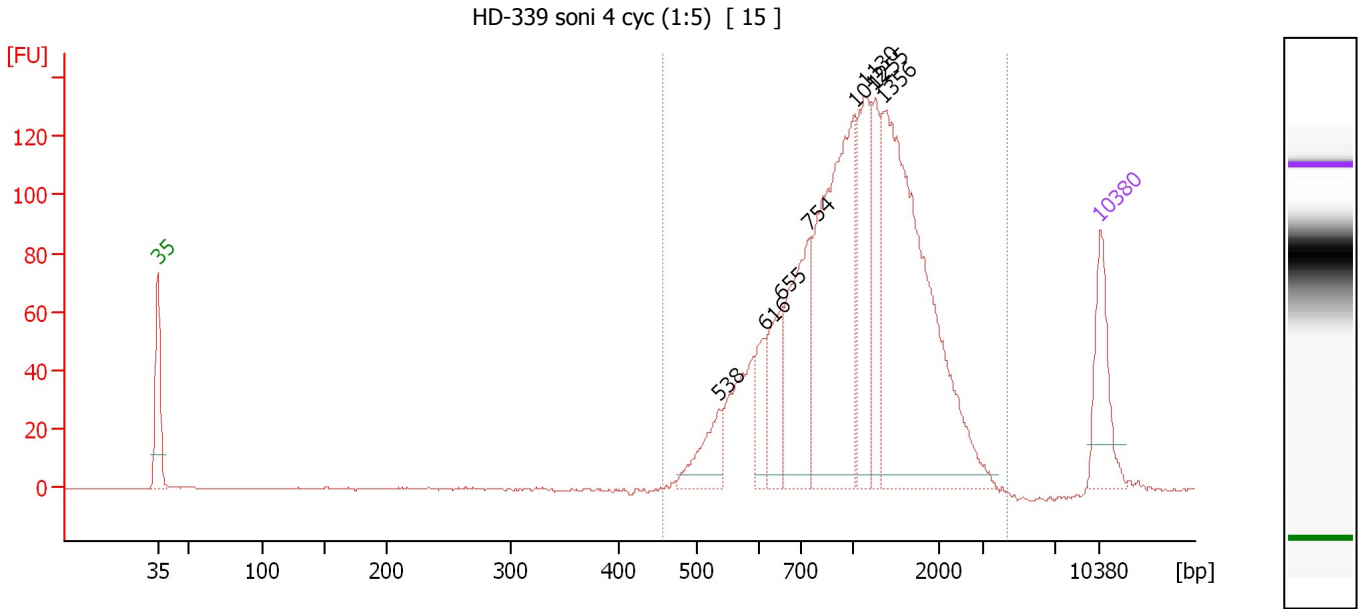
Region table for sample 2 : HD-330 soni 4 cyc (1:5)

From [bp]	To [bp]	Average Size [bp]	Molarity [pmol/l]	Conc. [pg/µl]	Corr. Area	% of Total	Size distribution in CV [%]	Color
405	2,660	933	2,549.4	1,301.90	1,434.9	99	42.2	Blue

Assay Class: High Sensitivity DNA Assay
 Data Path: C:\...ents and Settings\Bioanalyzer\2012-07-23\2012-07-23_003.xad

Created: 7/23/2012 2:00:27 PM
 Modified: 7/24/2012 9:22:57 AM

Electropherogram Summary Continued ...



Overall Results for sample 3 : HD-339 soni 4 cyc (1:5)

Number of peaks found: 8 Corr. Area 1: 1,631.1
 Noise: 0.2

Peak table for sample 3 : HD-339 soni 4 cyc (1:5)

Peak	Size [bp]	Conc. [pg/μl]	Molarity [pmol/l]	Observations
1	35	125.00	5,411.3	Lower Marker
2	538	67.08	188.9	
3	616	54.02	132.9	
4	655	83.96	194.3	
5	754	185.41	372.5	
6	1,012	354.07	530.0	
7	1,130	151.84	203.7	
8	1,255	83.76	101.1	
9	1,356	504.67	563.8	
10	10,380	75.00	10.9	Upper Marker

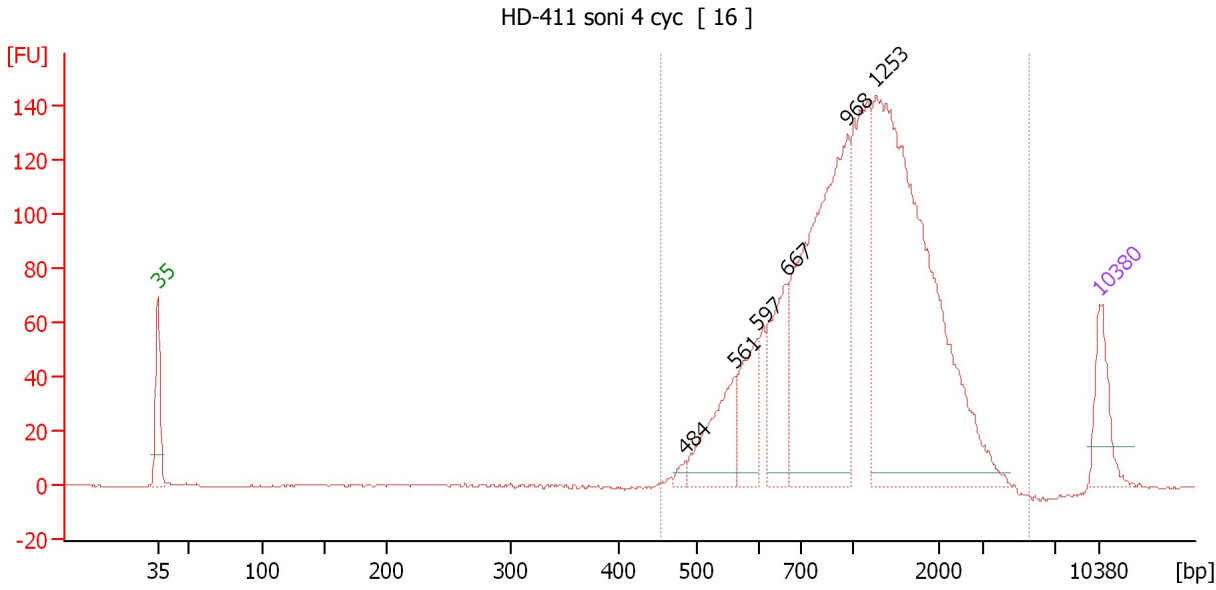
Region table for sample 3 : HD-339 soni 4 cyc (1:5)

From [bp]	To [bp]	Average Size [bp]	Molarity [pmol/l]	Conc. [pg/μl]	Corr. Area	% of Total	Size distribution in CV [%]	Color
456	4,340	1,163	2,580.0	1,600.69	1,631.1	100	44.0	Blue

Assay Class: High Sensitivity DNA Assay
 Data Path: C:\...ents and Settings\Bioanalyzer\2012-07-23\2012-07-23_003.xad

Created: 7/23/2012 2:00:27 PM
 Modified: 7/24/2012 9:22:57 AM

Electropherogram Summary Continued ...



Overall Results for sample 4 : HD-411 soni 4 cyc

Number of peaks found: 6 Corr. Area 1: 1,835.8
 Noise: 0.2

Peak table for sample 4 : HD-411 soni 4 cyc

Peak	Size [bp]	Conc. [pg/μl]	Molarity [pmol/l]	Observations
1	35	125.00	5,411.3	Lower Marker
2	484	11.71	36.6	
3	561	153.02	413.1	
4	597	122.11	309.8	
5	667	172.11	391.1	
6	968	634.50	993.2	
7	1,253	913.47	1,104.6	
8	10,380	75.00	10.9	Upper Marker

Region table for sample 4 : HD-411 soni 4 cyc

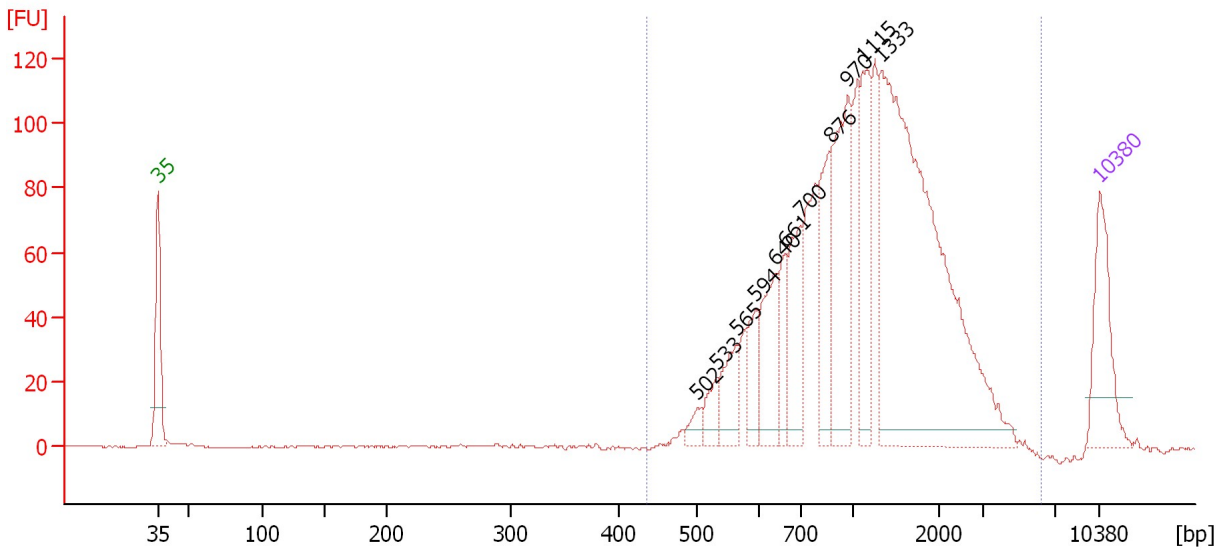
From [bp]	To [bp]	Average Size [bp]	Molarity [pmol/l]	Conc. [pg/μl]	Corr. Area	% of Total	Size distribution in CV [%]	Color
453	5,597	1,198	3,713.8	2,316.91	1,835.8	100	47.3	Blue

Assay Class: High Sensitivity DNA Assay
 Data Path: C:\...ents and Settings\Bioanalyzer\2012-07-23\2012-07-23_003.xad

Created: 7/23/2012 2:00:27 PM
 Modified: 7/24/2012 9:22:57 AM

Electropherogram Summary Continued ...

HD-625 soni 4 cyc (1:5) [17]



Overall Results for sample 5 : HD-625 soni 4 cyc (1:5)

Number of peaks found: 11 Corr. Area 1: 1,549.2
 Noise: 0.2

Peak table for sample 5 : HD-625 soni 4 cyc (1:5)

Peak	Size [bp]	Conc. [pg/µl]	Molarity [pmol/l]	Observations
1	35	125.00	5,411.3	Lower Marker
2	502	15.80	47.7	
3	533	25.67	73.0	
4	565	47.49	127.5	
5	594	40.67	103.7	
6	640	80.80	191.4	
7	661	44.49	101.9	
8	700	81.74	177.0	
9	876	94.29	163.1	
10	970	149.53	233.6	
11	1,115	90.81	123.4	
12	1,333	535.56	608.9	
13	10,380	75.00	10.9	Upper Marker

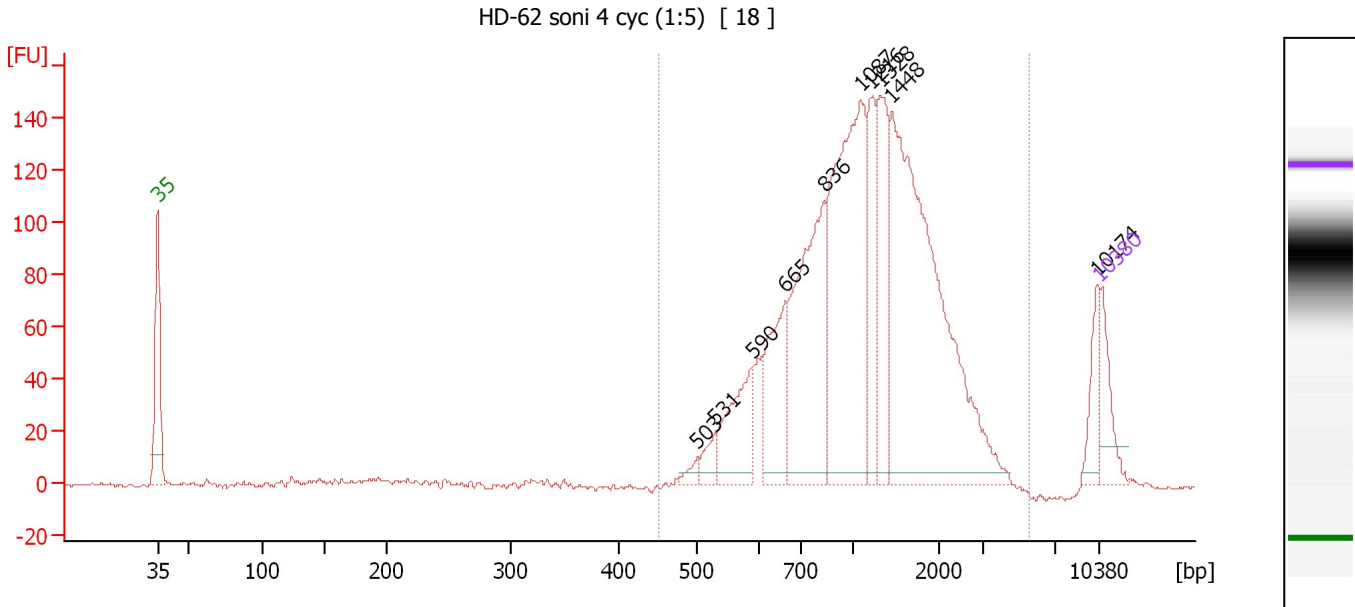
Region table for sample 5 : HD-625 soni 4 cyc (1:5)

From [bp]	To [bp]	Average Size [bp]	Molarity [pmol/l]	Conc. [pg/µl]	Corr. Area	% of Total	Size distribution in CV [%]	Color
435	6,178	1,268	2,214.2	1,425.81	1,549.2	100	51.4	Blue

Assay Class: High Sensitivity DNA Assay
 Data Path: C:\...ents and Settings\Bioanalyzer\2012-07-23\2012-07-23_003.xad

Created: 7/23/2012 2:00:27 PM
 Modified: 7/24/2012 9:22:57 AM

Electropherogram Summary Continued ...



Overall Results for sample 6 : HD-62 soni 4 cyc (1:5)

Number of peaks found: 10 Corr. Area 1: 1,868.5
 Noise: 0.3

Peak table for sample 6 : HD-62 soni 4 cyc (1:5)

Peak	Size [bp]	Conc. [pg/μl]	Molarity [pmol/l]	Observations
1	35	125.00	5,411.3	Lower Marker
2	503	19.37	58.4	
3	531	41.21	117.6	
4	590	165.86	425.9	
5	665	200.64	457.4	
6	836	445.69	808.2	
7	1,087	606.85	845.5	
8	1,216	157.04	195.7	
9	1,328	207.92	237.3	
10	1,448	842.54	881.7	
11	10,174	63.31	9.4	
12	10,380	75.00	10.9	Upper Marker

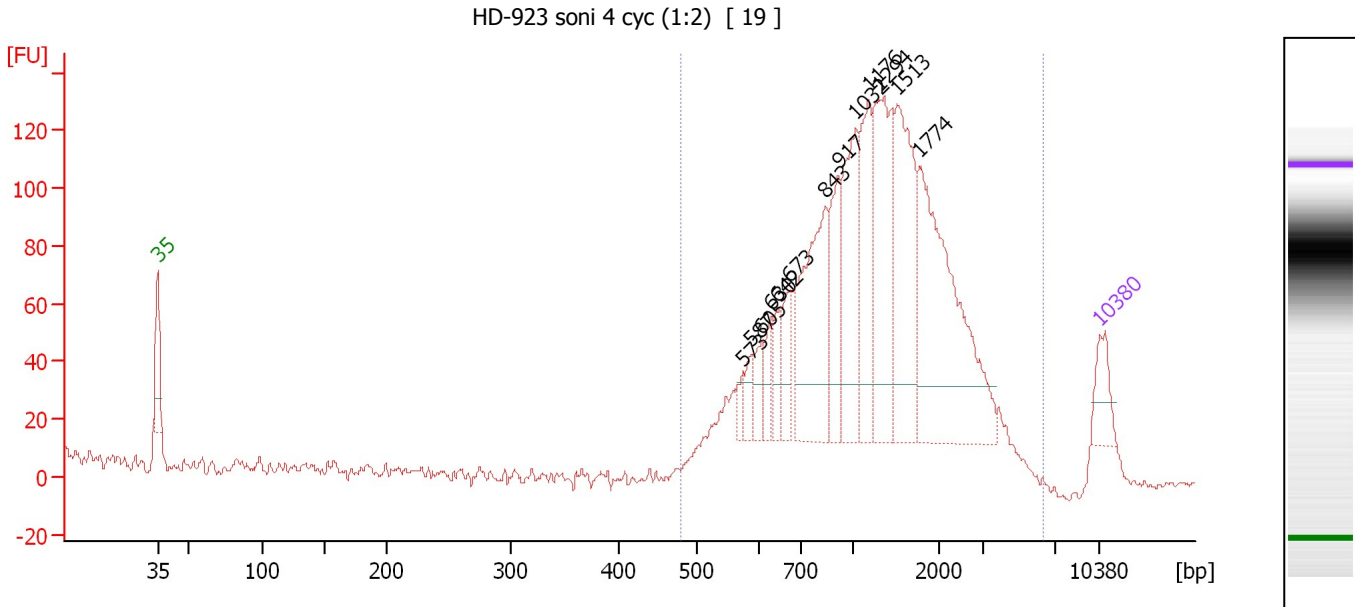
Region table for sample 6 : HD-62 soni 4 cyc (1:5)

From [bp]	To [bp]	Average Size [bp]	Molarity [pmol/l]	Conc. [pg/μl]	Corr. Area	% of Total	Size distribution in CV [%]	Color
451	5,609	1,251	4,193.3	2,737.35	1,868.5	95	47.5	Blue

Assay Class: High Sensitivity DNA Assay
 Data Path: C:\...ents and Settings\Bioanalyzer\2012-07-23\2012-07-23_003.xad

Created: 7/23/2012 2:00:27 PM
 Modified: 7/24/2012 9:22:57 AM

Electropherogram Summary Continued ...



Setpoint Deviations for sample 7 : HD-923 soni 4 cyc (1:2)

Height Threshold [FU] : 20 Width Threshold [s] : 0.1

Overall Results for sample 7 : HD-923 soni 4 cyc (1:2)

Number of peaks found: 13 Corr. Area 1: 1,550.8
 Noise: 1.1

Peak table for sample 7 : HD-923 soni 4 cyc (1:2)

Peak	Size [bp]	Conc. [pg/µl]	Molarity [pmol/l]	Observations
1	35	125.00	5,411.3	Lower Marker
2	573	24.43	64.6	
3	587	59.21	152.8	
4	605	55.14	138.1	
5	630	65.45	157.5	
6	642	69.71	164.6	
7	673	92.43	208.0	
8	843	410.90	738.5	
9	917	176.84	292.2	
10	1,032	316.40	464.3	
11	1,176	239.21	308.3	
12	1,294	387.85	454.2	
13	1,513	391.03	391.6	
14	1,774	606.72	518.1	
15	10,380	75.00	10.9	Upper Marker

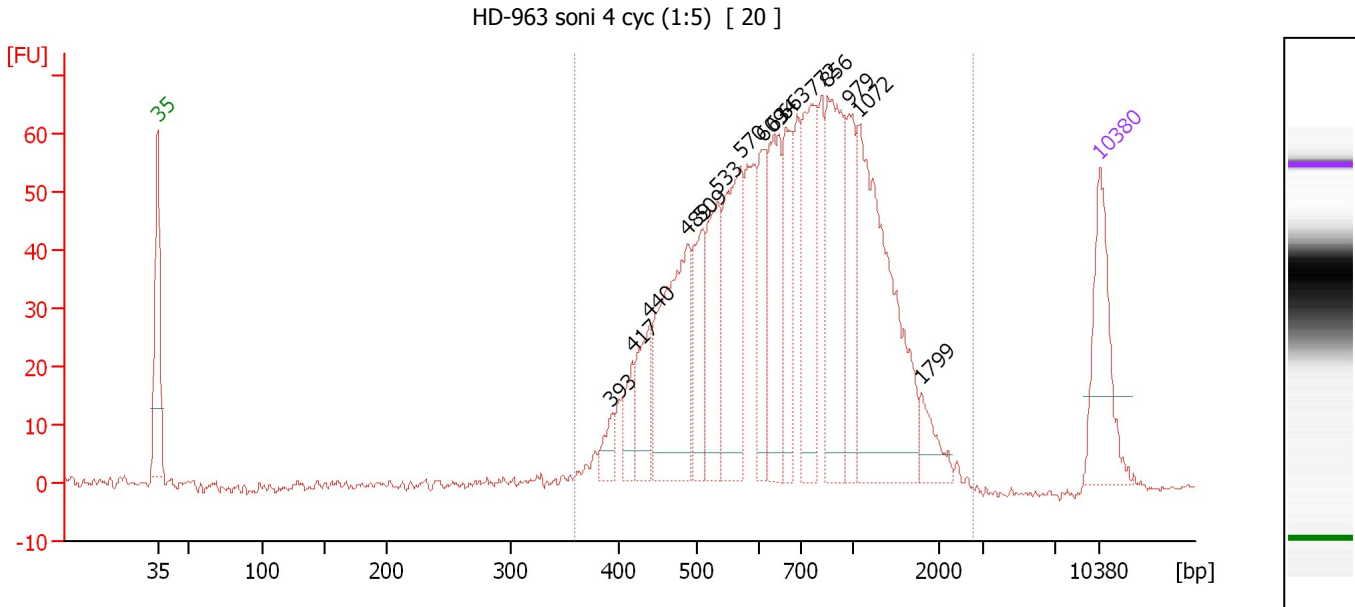
Region table for sample 7 : HD-923 soni 4 cyc (1:2)

From [bp]	To [bp]	Average Size [bp]	Molarity [pmol/l]	Conc. [pg/µl]	Corr. Area	% of Total	Size distribution in CV [%]	Color
481	6,398	1,356	4,763.9	3,300.90	1,550.8	94	49.8	Blue

Assay Class: High Sensitivity DNA Assay
 Data Path: C:\...ents and Settings\Bioanalyzer\2012-07-23\2012-07-23_003.xad

Created: 7/23/2012 2:00:27 PM
 Modified: 7/24/2012 9:22:57 AM

Electropherogram Summary Continued ...



Overall Results for sample 8 : HD-963 soni 4 cyc (1:5)

Number of peaks found: 15 Corr. Area 1: 1,184.8
 Noise: 0.3

Peak table for sample 8 : HD-963 soni 4 cyc (1:5)

Peak	Size [bp]	Conc. [pg/µl]	Molarity [pmol/l]	Observations
1	35	125.00	5,411.3	Lower Marker
2	393	20.43	78.7	
3	417	31.76	115.4	
4	440	56.49	194.7	
5	489	188.99	585.7	
6	509	73.05	217.6	
7	533	98.62	280.2	
8	570	138.88	369.2	
9	609	66.43	165.4	
10	634	113.22	270.6	
11	663	76.46	174.8	
12	772	114.99	225.6	
13	856	145.55	257.7	
14	979	72.52	112.2	
15	1,072	242.49	342.6	
16	1,799	25.31	21.3	
17	10,380	75.00	10.9	Upper Marker

Region table for sample 8 : HD-963 soni 4 cyc (1:5)

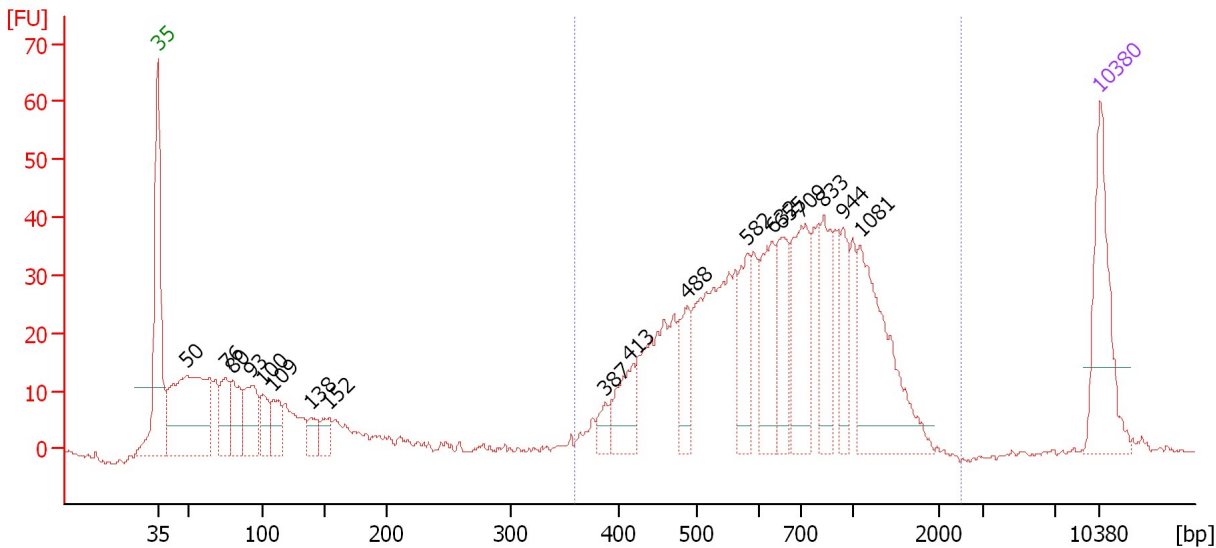
From [bp]	To [bp]	Average Size [bp]	Molarity [pmol/l]	Conc. [pg/µl]	Corr. Area	% of Total	Size distribution in CV [%]	Color
359	2,752	788	3,917.5	1,686.62	1,184.8	100	44.4	Blue

Assay Class: High Sensitivity DNA Assay
 Data Path: C:\...ents and Settings\Bioanalyzer\2012-07-23\2012-07-23_003.xad

Created: 7/23/2012 2:00:27 PM
 Modified: 7/24/2012 9:22:57 AM

Electropherogram Summary Continued ...

HD-1236 soni (1:5) 4 cyc + 2cyc=6cyc [5]



Overall Results for sample 9 : HD-1236 soni (1:5) 4 cyc + 2cyc=6cyc

Number of peaks found: 18 Corr. Area 1: 624.0
 Noise: 0.4

Peak table for sample 9 : HD-1236 soni (1:5) 4 cyc + 2cyc=6cyc

Peak	Size [bp]	Conc. [pg/μl]	Molarity [pmol/l]	Observations
1	35	125.00	5,411.3	Lower Marker
2	50	210.38	6,421.3	
3	76	44.08	883.4	
4	80	47.01	889.9	
5	93	62.21	1,015.2	
6	100	30.28	457.5	
7	109	33.76	469.5	
8	138	19.47	214.1	
9	152	20.81	207.1	
10	387	15.54	60.9	
11	413	45.97	168.7	
12	488	43.19	134.0	
13	582	54.35	141.6	
14	632	71.52	171.5	
15	655	56.40	130.5	
16	709	91.01	194.5	
17	833	59.05	107.4	
18	944	39.14	62.8	
19	1,081	127.72	179.1	
20	10,380	75.00	10.9	Upper Marker

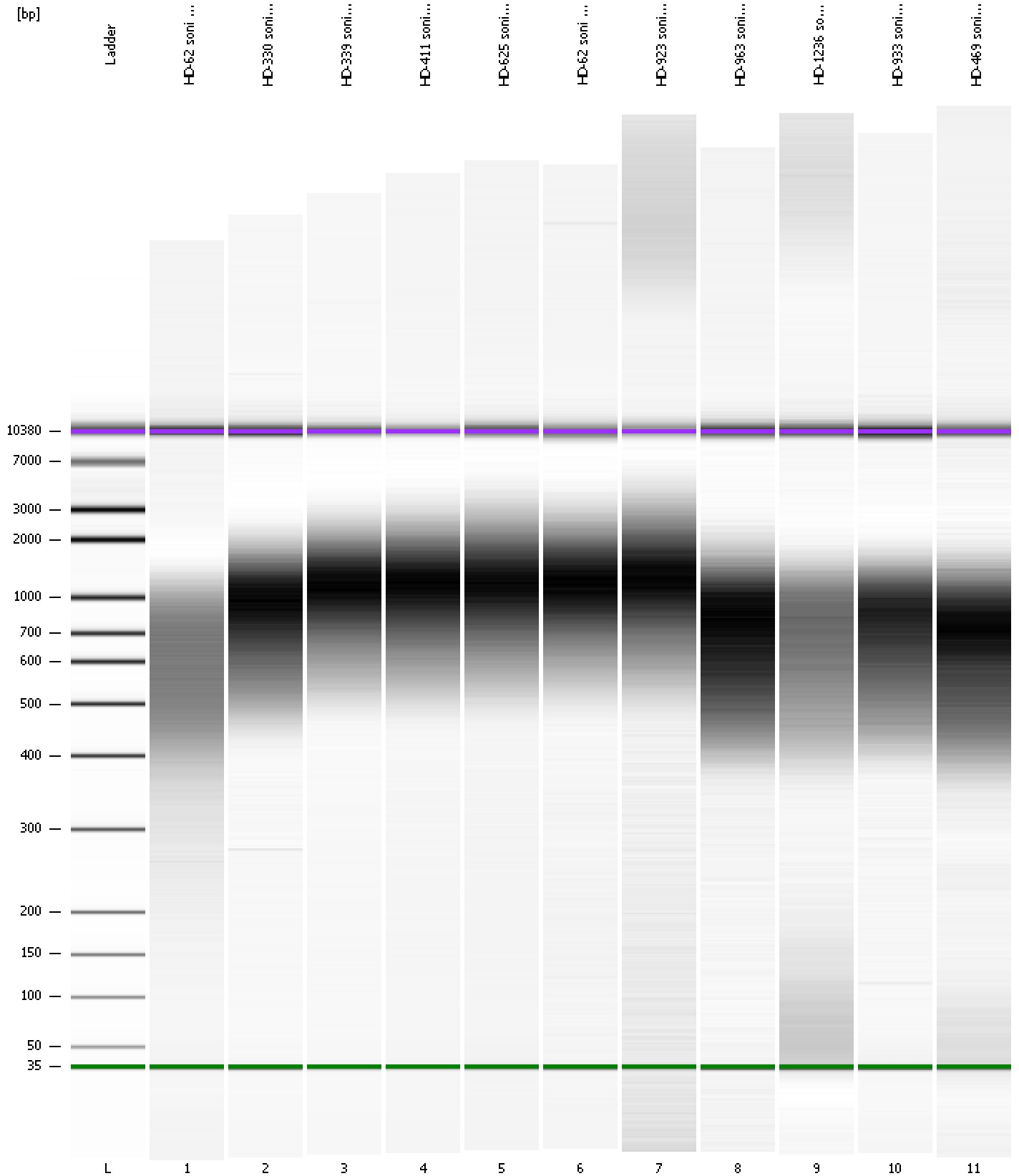
Region table for sample 9 : HD-1236 soni (1:5) 4 cyc + 2cyc=6cyc

From [bp]	To [bp]	Average Size [bp]	Molarity [pmol/l]	Conc. [pg/μl]	Corr. Area	% of Total	Size distribution in CV [%]	Color
359	2,510	731	2,109.3	874.82	624.0	73	38.0	Blue

Assay Class: High Sensitivity DNA Assay
Data Path: C:\...ents and Settings\Bioanalyzer\2012-07-23\2012-07-23_003.xad

Created: 7/23/2012 2:00:27 PM
Modified: 7/24/2012 9:22:57 AM

Gel Image



Assay Class: High Sensitivity DNA Assay
Data Path: C:\...ents and Settings\Bioanalyzer\2012-07-23\2012-07-23_003.xad

Created: 7/23/2012 2:00:27 PM
Modified: 7/24/2012 9:22:57 AM

Curves

Standard Curve

