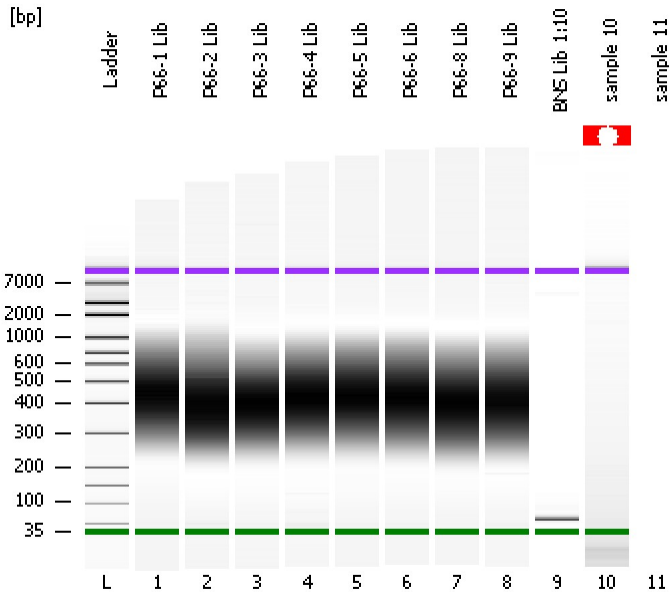


Assay Class: High Sensitivity DNA Assay
Data Path: C:\...ents and Settings\Bioanalyzer\2012-07-23\2012-07-23_004.xad

Created: 7/23/2012 4:43:40 PM
Modified: 7/23/2012 5:22:04 PM

Electrophoresis File Run Summary



Instrument Information:

Instrument Name: DE13701086 Firmware: C.01.069
Serial#: DE13701086 Type: G2938B

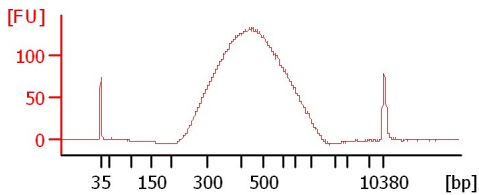
Assay Information:

Assay Origin Path: C:\Program Files\Agilent\2100 bioanalyzer\2100 expert\assays\dsDNA\High Sensitivity DNA.xsy
Assay Class: High Sensitivity DNA Assay
Version: 1.03
Assay Comments: Copyright © 2003-2010 Agilent Technologies

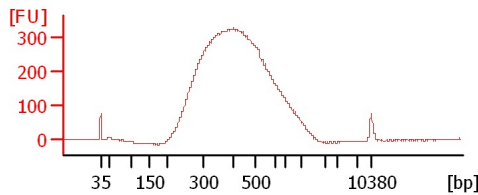
Chip Information:

Chip Lot #:
Reagent Kit Lot #:
Chip Comments:

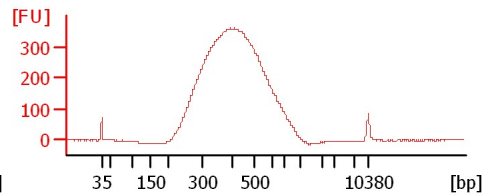
P66-1 Lib



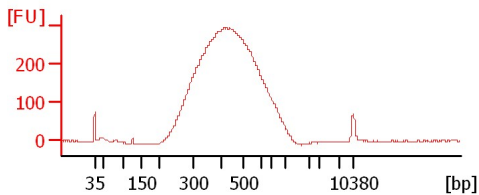
P66-2 Lib



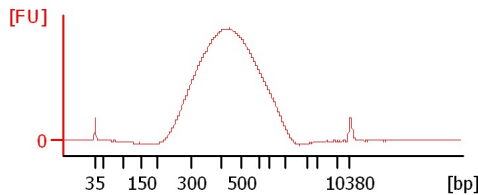
P66-3 Lib



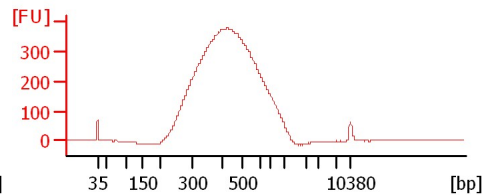
P66-4 Lib



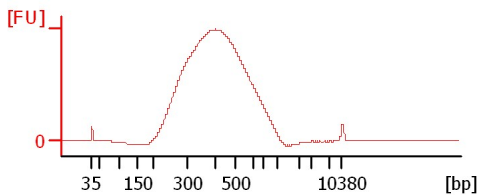
P66-5 Lib



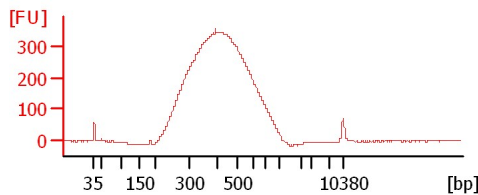
P66-6 Lib



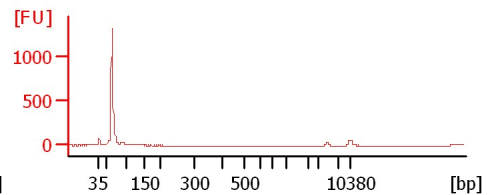
P66-8 Lib



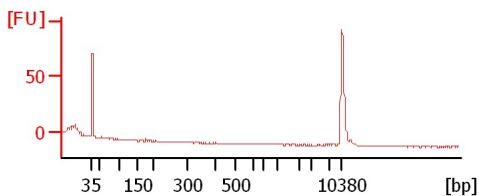
P66-9 Lib



BNS Lib 1:10



sample 10



Assay Class: High Sensitivity DNA Assay
Data Path: C:\...ents and Settings\Bioanalyzer\2012-07-23\2012-07-23_004.xad

Created: 7/23/2012 4:43:40 PM
Modified: 7/23/2012 5:22:04 PM

Electrophoresis File Run Summary (Chip Summary)

Sample Name	Sample Comment	Rest. Digest	Status	Observation	Result Label	Result Color
P66-1 Lib		<input type="checkbox"/>	✓			
P66-2 Lib		<input type="checkbox"/>	✓			
P66-3 Lib		<input type="checkbox"/>	✓			
P66-4 Lib		<input type="checkbox"/>	✓			
P66-5 Lib		<input type="checkbox"/>	✓			
P66-6 Lib		<input type="checkbox"/>	✓			
P66-8 Lib		<input type="checkbox"/>	✓			
P66-9 Lib		<input type="checkbox"/>	✓			
BNS Lib 1:10		<input type="checkbox"/>	✓			
sample 10		<input type="checkbox"/>	✗			
sample 11		<input type="checkbox"/>	✗			
Ladder		<input type="checkbox"/>	✓			

Chip Lot #

Reagent Kit Lot #

Chip Comments :

Assay Class: High Sensitivity DNA Assay
Data Path: C:\...ents and Settings\Bioanalyzer\2012-07-23\2012-07-23_004.xad

Created: 7/23/2012 4:43:40 PM
Modified: 7/23/2012 5:22:04 PM

Electrophoresis Assay Details

General Analysis Settings

Number of Available Sample and Ladder Wells (Max.) : 12
Minimum Visible Range [s] : 32
Maximum Visible Range [s] : 138
Start Analysis Time Range [s] : 33
End Analysis Time Range [s] : 137.5
Ladder Concentration [pg/μl] : 1950
Uses Standard Area for Ladder Fragments
Lower Marker Concentration [pg/μl] : 125
Upper Marker Concentration [pg/μl] : 75
Used Upper Marker for Quantitation
Standard Curve Fit is Point to Point
Show Data Aligned to Lower and Upper Marker

Integrator Settings

Integration Start Time [s] : 33.05
Integration End Time [s] : 137
Slope Threshold : 0.8
Height Threshold [FU] : 5
Area Threshold : 0.1
Width Threshold [s] : 0.6
Baseline Plateau [s] : 0.5

Filter Settings

Filter Width [s] : 0.5
Polynomial Order : 4

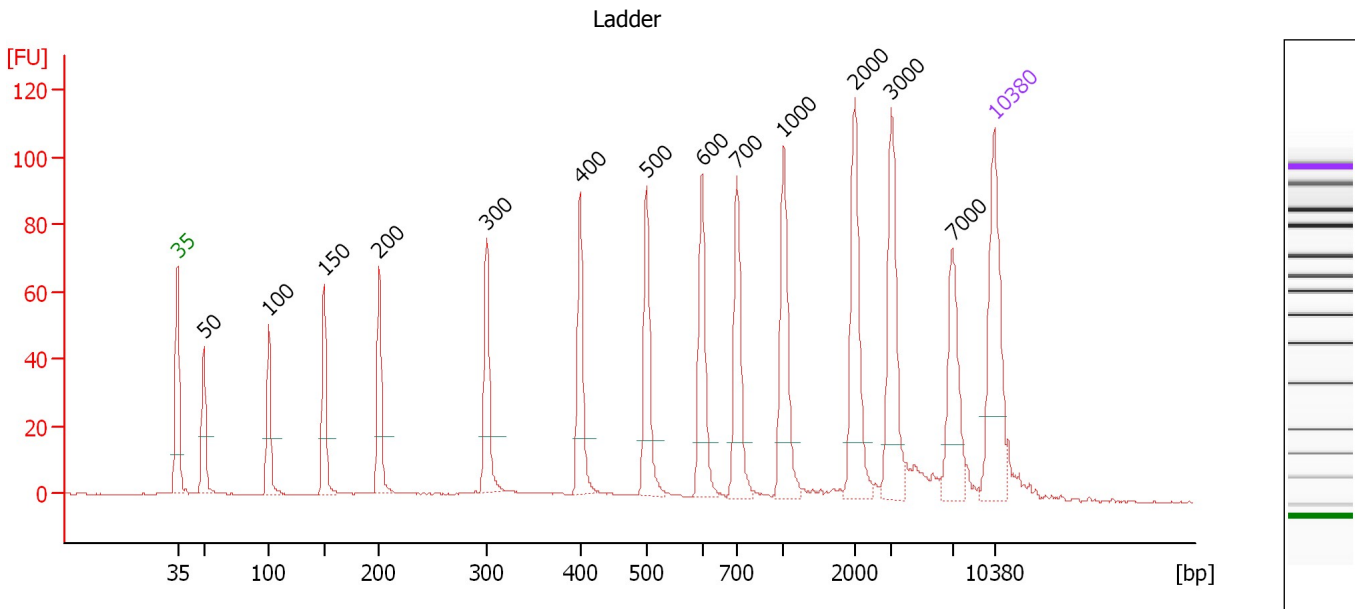
Ladder

Ladder Peak	Size	Area
1	35	160
2	50	210
3	100	208
4	150	221
5	200	242
6	300	270
7	400	305
8	500	306
9	600	336
10	700	321
11	1000	366
12	2000	413
13	3000	411
14	7000	400
15	10380	214

Assay Class: High Sensitivity DNA Assay
 Data Path: C:\...ents and Settings\Bioanalyzer\2012-07-23\2012-07-23_004.xad

Created: 7/23/2012 4:43:40 PM
 Modified: 7/23/2012 5:22:04 PM

Electropherogram Summary



Overall Results for Ladder

Noise: 0.2

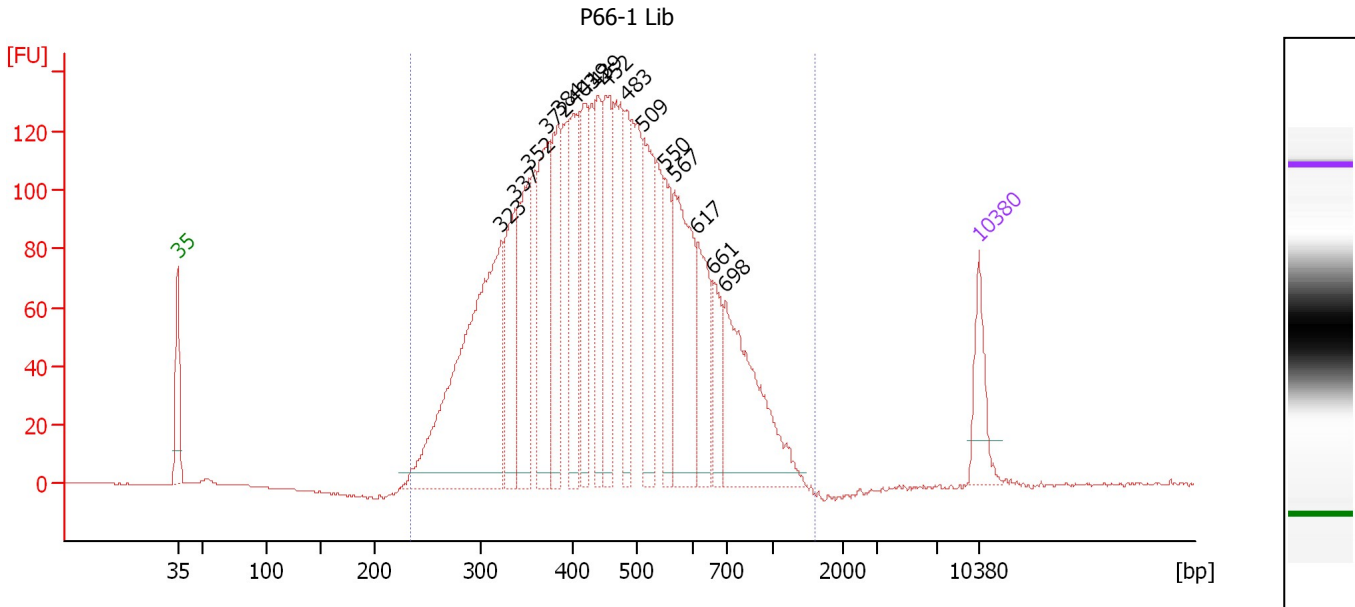
Peak table for Ladder

Peak	Size [bp]	Conc. [pg/µl]	Molarity [pmol/l]	Observations
1	35	125.00	5,411.3	Lower Marker
2	50	150.00	4,545.5	Ladder Peak
3	100	150.00	2,272.7	Ladder Peak
4	150	150.00	1,515.2	Ladder Peak
5	200	150.00	1,136.4	Ladder Peak
6	300	150.00	757.6	Ladder Peak
7	400	150.00	568.2	Ladder Peak
8	500	150.00	454.5	Ladder Peak
9	600	150.00	378.8	Ladder Peak
10	700	150.00	324.7	Ladder Peak
11	1,000	150.00	227.3	Ladder Peak
12	2,000	150.00	113.6	Ladder Peak
13	3,000	150.00	75.8	Ladder Peak
14	7,000	150.00	32.5	Ladder Peak
15	10,380	75.00	10.9	Upper Marker

Assay Class: High Sensitivity DNA Assay
 Data Path: C:\...ents and Settings\Bioanalyzer\2012-07-23\2012-07-23_004.xad

Created: 7/23/2012 4:43:40 PM
 Modified: 7/23/2012 5:22:04 PM

Electropherogram Summary Continued ...



Overall Results for sample 1 : P66-1 Lib

Number of peaks found: 16 Corr. Area 1: 3,432.2
 Noise: 0.2

Peak table for sample 1 : P66-1 Lib

Peak	Size [bp]	Conc. [pg/μl]	Molarity [pmol/l]	Observations
1	35	125.00	5,411.3	Lower Marker
2	323	818.52	3,843.1	
3	337	213.47	959.0	
4	352	281.53	1,210.4	
5	372	283.17	1,152.7	
6	384	213.07	839.7	
7	403	203.89	767.1	
8	419	194.78	704.4	
9	439	172.28	595.2	
10	452	226.68	760.5	
11	483	138.74	434.9	
12	509	225.63	671.0	
13	550	125.66	346.4	
14	567	309.61	826.9	
15	617	159.60	392.1	
16	661	99.61	228.5	
17	698	336.46	730.1	
18	10,380	75.00	10.9	Upper Marker

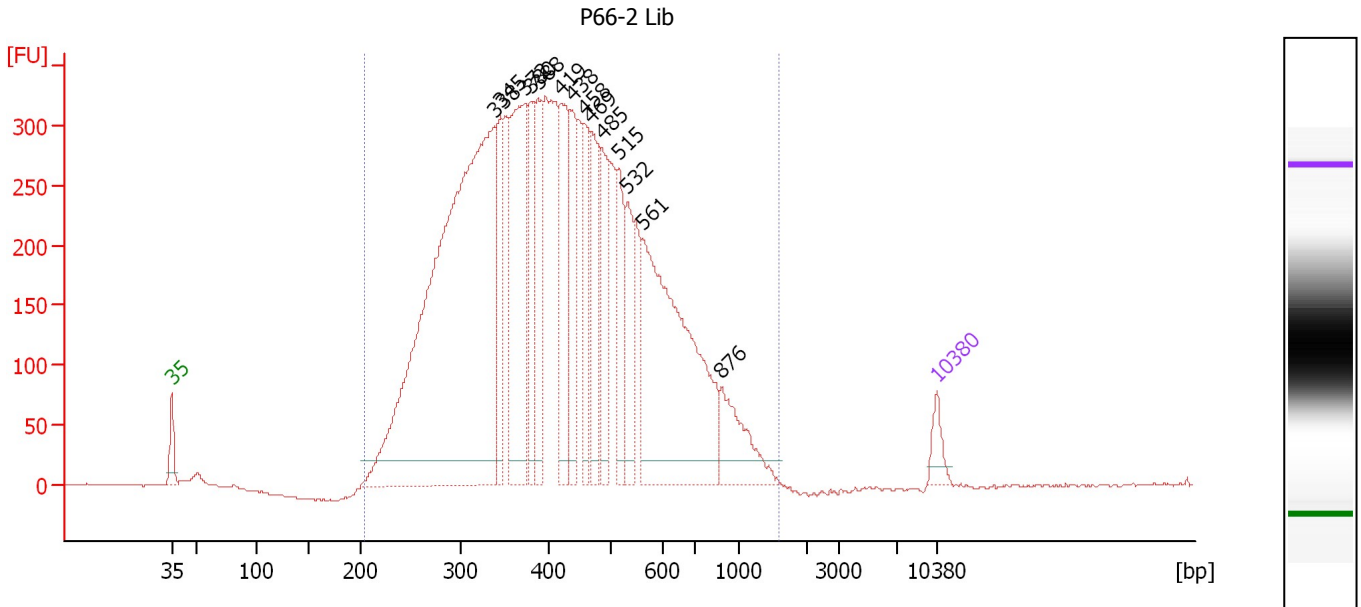
Region table for sample 1 : P66-1 Lib

From [bp]	To [bp]	Average Size [bp]	Molarity [pmol/l]	Conc. [pg/μl]	Corr. Area	% of Total	Size distribution in CV [%]	Color
234	1,597	475	17,950.9	4,948.74	3,432.2	100	33.5	Blue

Assay Class: High Sensitivity DNA Assay
 Data Path: C:\...ents and Settings\Bioanalyzer\2012-07-23\2012-07-23_004.xad

Created: 7/23/2012 4:43:40 PM
 Modified: 7/23/2012 5:22:04 PM

Electropherogram Summary Continued ...



Setpoint Deviations for sample 2 : P66-2 Lib

Height Threshold [FU] : 20

Overall Results for sample 2 : P66-2 Lib

Number of peaks found: 14 Corr. Area 1: 9,222.6
 Noise: 0.5

Peak table for sample 2 : P66-2 Lib

Peak	Size [bp]	Conc. [pg/µl]	Molarity [pmol/l]	Observations
1	35	125.00	5,411.3	Lower Marker
2	338	4,483.80	20,083.8	
3	345	435.78	1,914.0	
4	372	1,073.02	4,365.4	
5	380	422.06	1,681.3	
6	388	416.78	1,628.9	
7	419	636.20	2,298.0	
8	438	410.28	1,418.4	
9	458	390.10	1,290.8	
10	469	427.04	1,379.5	
11	485	377.67	1,179.3	
12	515	354.95	1,044.1	
13	532	335.59	956.6	
14	561	1,706.54	4,606.6	
15	876	318.79	551.2	
16	10,380	75.00	10.9	Upper Marker

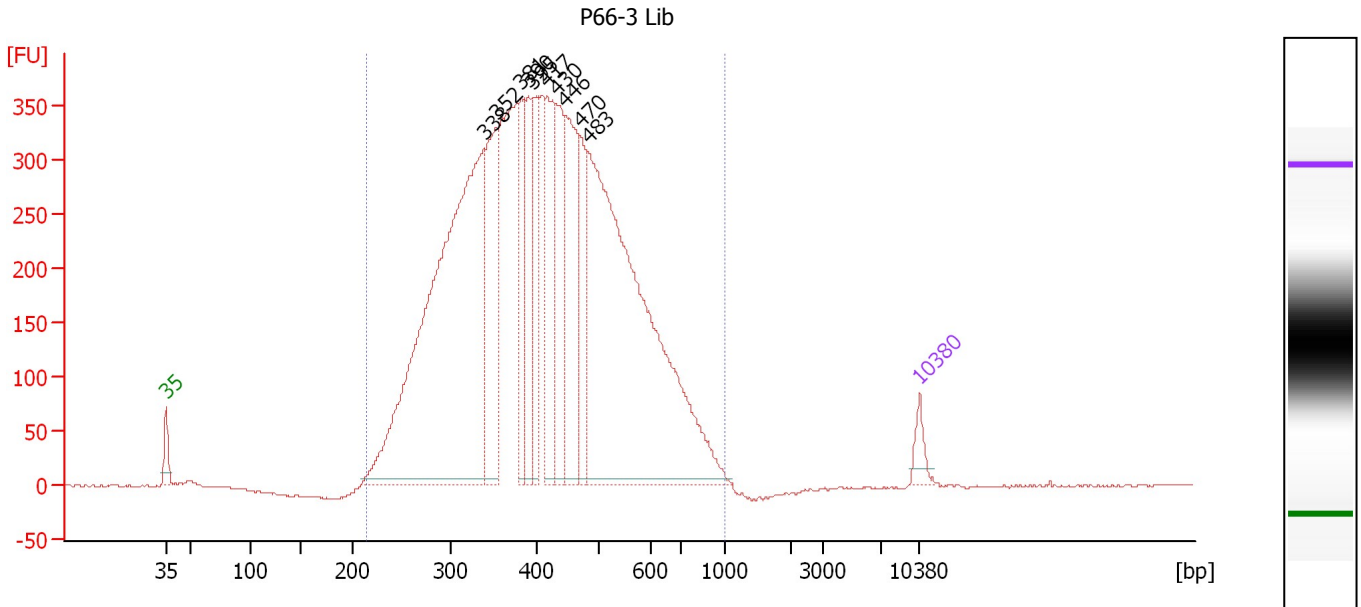
Region table for sample 2 : P66-2 Lib

From [bp]	To [bp]	Average Size [bp]	Molarity [pmol/l]	Conc. [pg/µl]	Corr. Area	% of Total	Size distribution in CV [%]	Color
205	1,589	441	56,878.8	14,341.58	9,222.6	100	36.6	Blue

Assay Class: High Sensitivity DNA Assay
 Data Path: C:\...ents and Settings\Bioanalyzer\2012-07-23\2012-07-23_004.xad

Created: 7/23/2012 4:43:40 PM
 Modified: 7/23/2012 5:22:04 PM

Electropherogram Summary Continued ...



Overall Results for sample 3 : P66-3 Lib

Number of peaks found: 10 Corr. Area 1: 9,184.3
 Noise: 1.0

Peak table for sample 3 : P66-3 Lib

Peak	Size [bp]	Conc. [pg/μl]	Molarity [pmol/l]	Observations
1	35	125.00	5,411.3	Lower Marker
2	338	4,033.52	18,076.4	
3	352	921.86	3,964.2	
4	381	475.57	1,888.8	
5	390	469.73	1,827.0	
6	395	465.88	1,789.3	
7	417	658.62	2,395.3	
8	430	537.97	1,893.4	
9	446	858.15	2,914.5	
10	470	415.37	1,340.3	
11	483	3,640.01	11,408.0	
12	10,380	75.00	10.9	Upper Marker

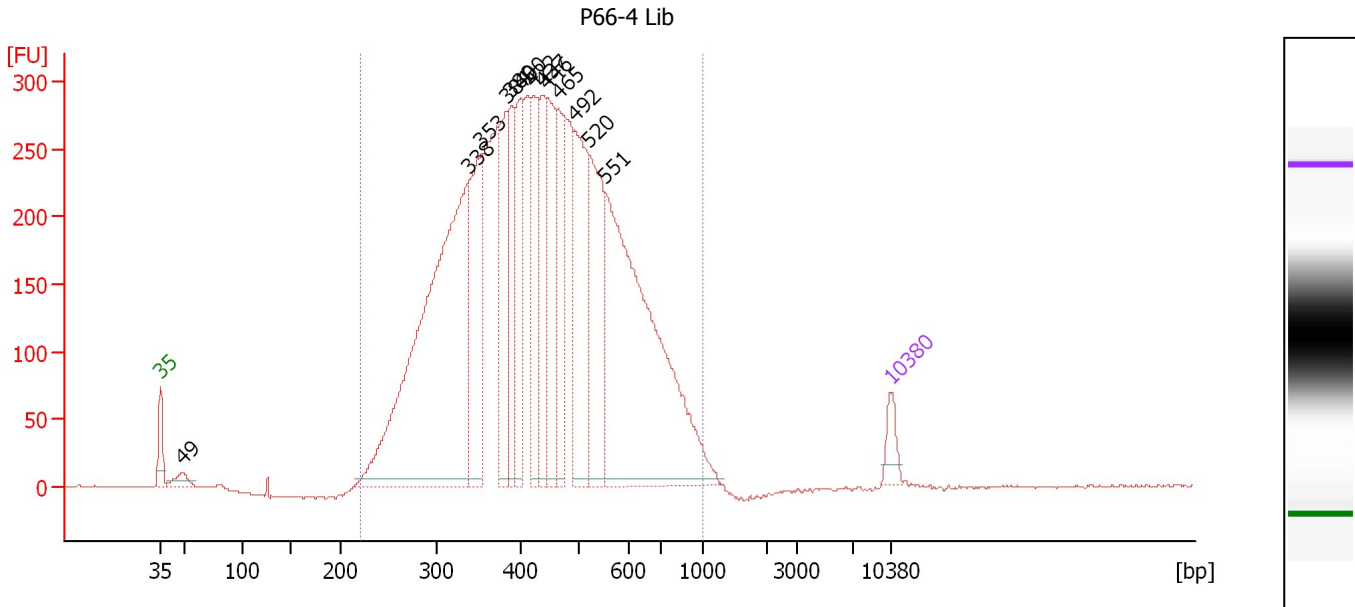
Region table for sample 3 : P66-3 Lib

From [bp]	To [bp]	Average Size [bp]	Molarity [pmol/l]	Conc. [pg/μl]	Corr. Area	% of Total	Size distribution in CV [%]	Color
214	1,000	425	56,862.5	14,377.18	9,184.3	100	28.4	Blue

Assay Class: High Sensitivity DNA Assay
 Data Path: C:\...ents and Settings\Bioanalyzer\2012-07-23\2012-07-23_004.xad

Created: 7/23/2012 4:43:40 PM
 Modified: 7/23/2012 5:22:04 PM

Electropherogram Summary Continued ...



Overall Results for sample 4 : P66-4 Lib

Number of peaks found: 13 Corr. Area 1: 7,426.4
 Noise: 0.6

Peak table for sample 4 : P66-4 Lib

Peak	Size [bp]	Conc. [pg/μl]	Molarity [pmol/l]	Observations
1	35	125.00	5,411.3	Lower Marker
2	49	82.22	2,522.4	
3	338	2,734.59	12,251.7	
4	353	696.57	2,990.8	
5	384	480.57	1,898.2	
6	389	396.04	1,543.8	
7	400	483.65	1,830.7	
8	422	510.62	1,834.3	
9	437	385.76	1,337.5	
10	446	522.48	1,775.1	
11	465	502.09	1,636.9	
12	492	706.02	2,176.0	
13	520	643.22	1,874.0	
14	551	2,073.15	5,698.2	
15	10,380	75.00	10.9	Upper Marker

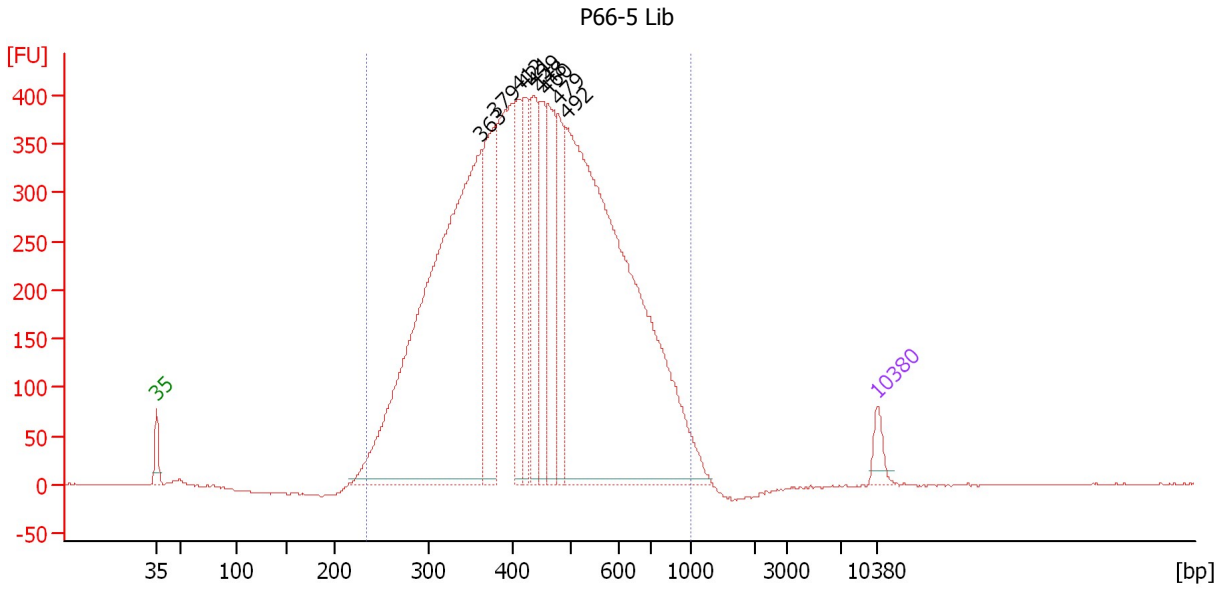
Region table for sample 4 : P66-4 Lib

From [bp]	To [bp]	Average Size [bp]	Molarity [pmol/l]	Conc. [pg/μl]	Corr. Area	% of Total	Size distribution in CV [%]	Color
222	1,000	451	45,028.1	11,978.56	7,426.4	99	29.7	Blue

Assay Class: High Sensitivity DNA Assay
 Data Path: C:\...ents and Settings\Bioanalyzer\2012-07-23\2012-07-23_004.xad

Created: 7/23/2012 4:43:40 PM
 Modified: 7/23/2012 5:22:04 PM

Electropherogram Summary Continued ...



Overall Results for sample 5 : P66-5 Lib

Number of peaks found: 9 Corr. Area 1: 10,152.3
 Noise: 0.6

Peak table for sample 5 : P66-5 Lib

Peak	Size [bp]	Conc. [pg/μl]	Molarity [pmol/l]	Observations
1	35	125.00	5,411.3	Lower Marker
2	363	4,376.61	18,272.7	
3	379	895.27	3,578.2	
4	412	482.97	1,774.3	
5	421	481.87	1,732.2	
6	439	621.31	2,145.8	
7	448	501.71	1,697.6	
8	460	628.80	2,069.0	
9	479	601.36	1,903.8	
10	492	4,695.17	14,453.3	
11	10,380	75.00	10.9	Upper Marker

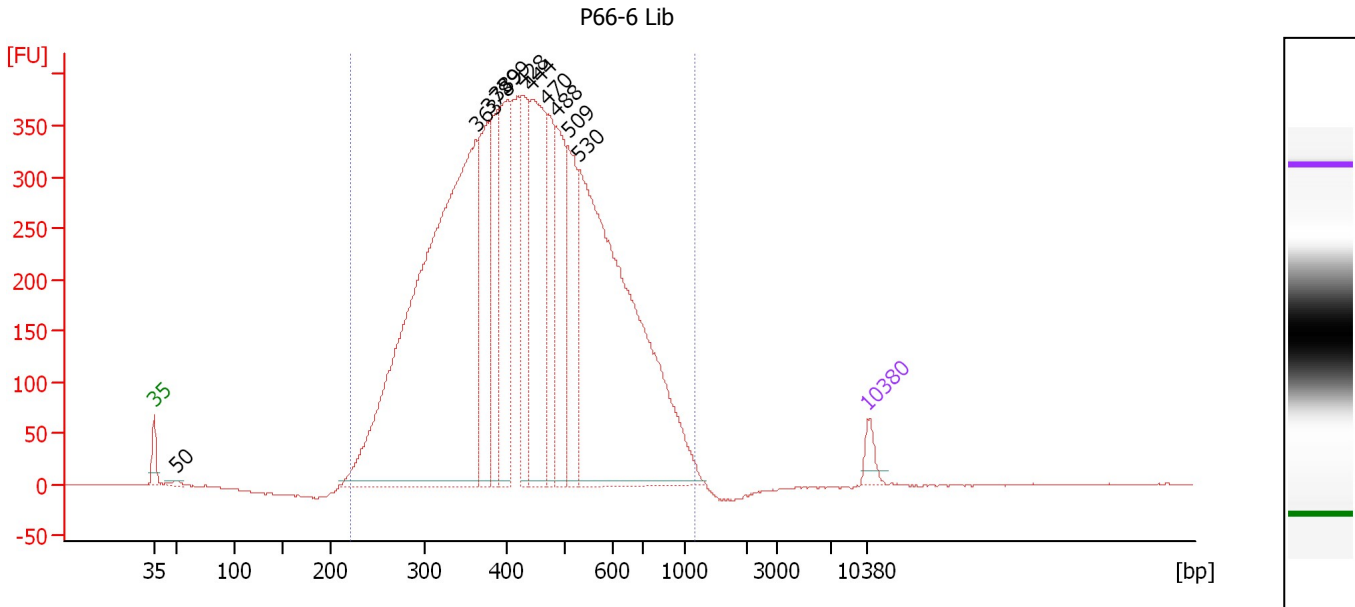
Region table for sample 5 : P66-5 Lib

From [bp]	To [bp]	Average Size [bp]	Molarity [pmol/l]	Conc. [pg/μl]	Corr. Area	% of Total	Size distribution in CV [%]	Color
234	1,000	458	53,819.3	14,511.31	10,152.3	99	30.0	Blue

Assay Class: High Sensitivity DNA Assay
 Data Path: C:\...ents and Settings\Bioanalyzer\2012-07-23\2012-07-23_004.xad

Created: 7/23/2012 4:43:40 PM
 Modified: 7/23/2012 5:22:04 PM

Electropherogram Summary Continued ...



Overall Results for sample 6 : P66-6 Lib

Number of peaks found: 11 Corr. Area 1: 9,886.9
 Noise: 0.5

Peak table for sample 6 : P66-6 Lib

Peak	Size [bp]	Conc. [pg/μl]	Molarity [pmol/l]	Observations
1	35	125.00	5,411.3	Lower Marker
2	50	32.28	983.8	
3	363	5,351.92	22,310.3	
4	378	941.05	3,767.1	
5	389	539.57	2,101.8	
6	399	1,002.20	3,801.7	
7	428	704.19	2,490.1	
8	444	1,246.11	4,252.0	
9	470	646.28	2,084.9	
10	488	716.40	2,224.4	
11	509	690.38	2,056.5	
12	530	3,702.42	10,593.3	
13	10,380	75.00	10.9	Upper Marker

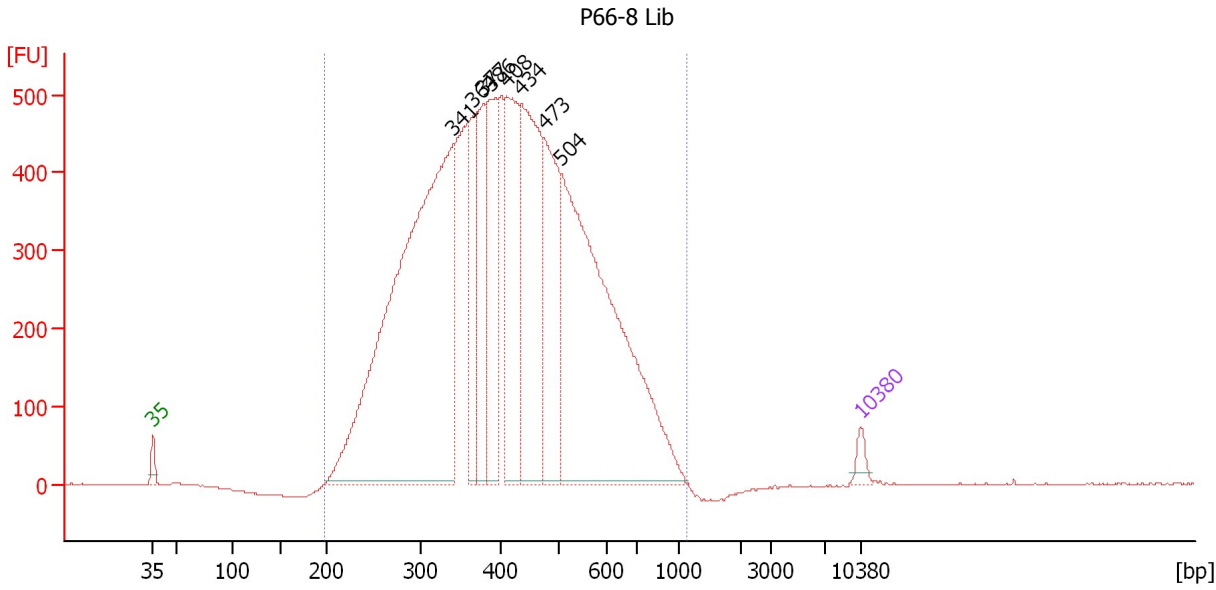
Region table for sample 6 : P66-6 Lib

From [bp]	To [bp]	Average Size [bp]	Molarity [pmol/l]	Conc. [pg/μl]	Corr. Area	% of Total	Size distribution in CV [%]	Color
223	1,162	456	62,326.8	16,559.10	9,886.9	100	31.7	Blue

Assay Class: High Sensitivity DNA Assay
 Data Path: C:\...ents and Settings\Bioanalyzer\2012-07-23\2012-07-23_004.xad

Created: 7/23/2012 4:43:40 PM
 Modified: 7/23/2012 5:22:04 PM

Electropherogram Summary Continued ...



Overall Results for sample 7 : P66-8 Lib

Number of peaks found: 8 Corr. Area 1: 13,424.6
 Noise: 0.4

Peak table for sample 7 : P66-8 Lib

Peak	Size [bp]	Conc. [pg/μl]	Molarity [pmol/l]	Observations
1	35	125.00	5,411.3	Lower Marker
2	341	6,845.65	30,448.7	
3	364	783.47	3,257.7	
4	377	946.63	3,805.2	
5	386	1,223.96	4,802.3	
6	408	1,555.16	5,770.4	
7	434	2,196.15	7,663.5	
8	473	1,440.53	4,614.5	
9	504	4,683.15	14,074.0	
10	10,380	75.00	10.9	Upper Marker

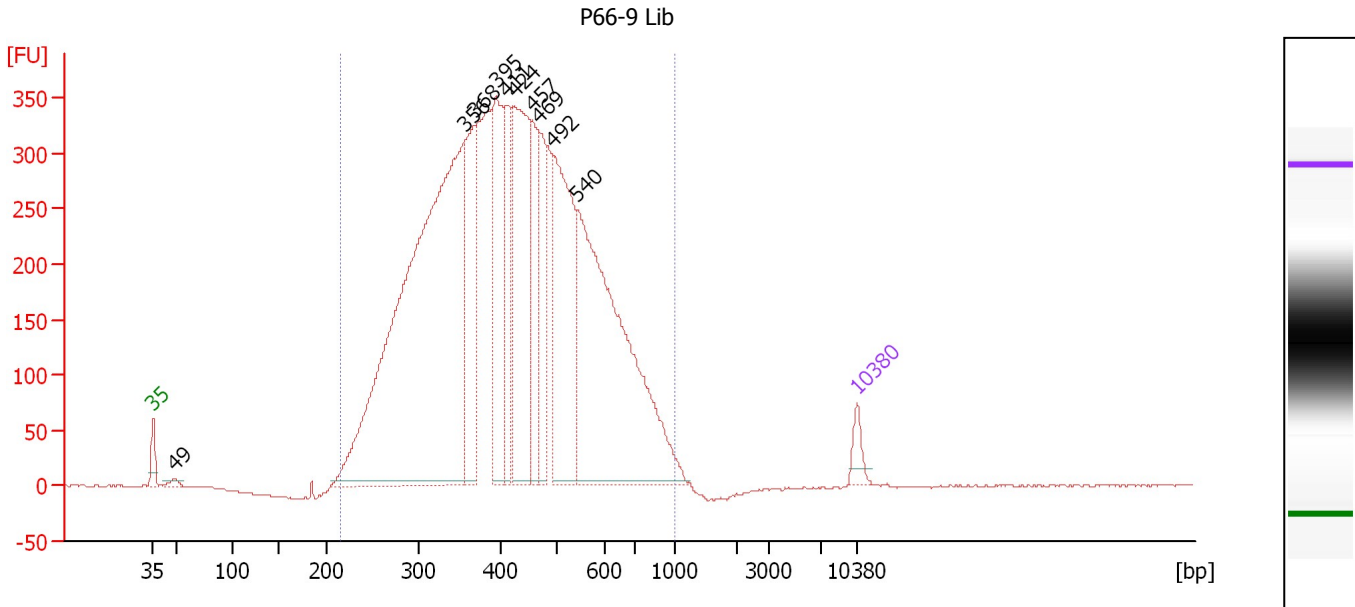
Region table for sample 7 : P66-8 Lib

From [bp]	To [bp]	Average Size [bp]	Molarity [pmol/l]	Conc. [pg/μl]	Corr. Area	% of Total	Size distribution in CV [%]	Color
197	1,135	427	89,133.4	22,241.73	13,424.6	100	30.8	Blue

Assay Class: High Sensitivity DNA Assay
 Data Path: C:\...ents and Settings\Bioanalyzer\2012-07-23\2012-07-23_004.xad

Created: 7/23/2012 4:43:40 PM
 Modified: 7/23/2012 5:22:04 PM

Electropherogram Summary Continued ...



Overall Results for sample 8 : P66-9 Lib

Number of peaks found: 10 Corr. Area 1: 8,996.8
 Noise: 0.5

Peak table for sample 8 : P66-9 Lib

Peak	Size [bp]	Conc. [pg/μl]	Molarity [pmol/l]	Observations
1	35	125.00	5,411.3	Lower Marker
2	49	34.66	1,067.4	
3	356	4,891.09	20,802.0	
4	368	837.33	3,445.8	
5	395	810.41	3,105.8	
6	411	489.30	1,803.3	
7	424	1,319.87	4,715.3	
8	457	516.53	1,714.1	
9	469	429.76	1,389.4	
10	492	1,282.15	3,949.8	
11	540	2,485.09	6,968.0	
12	10,380	75.00	10.9	Upper Marker

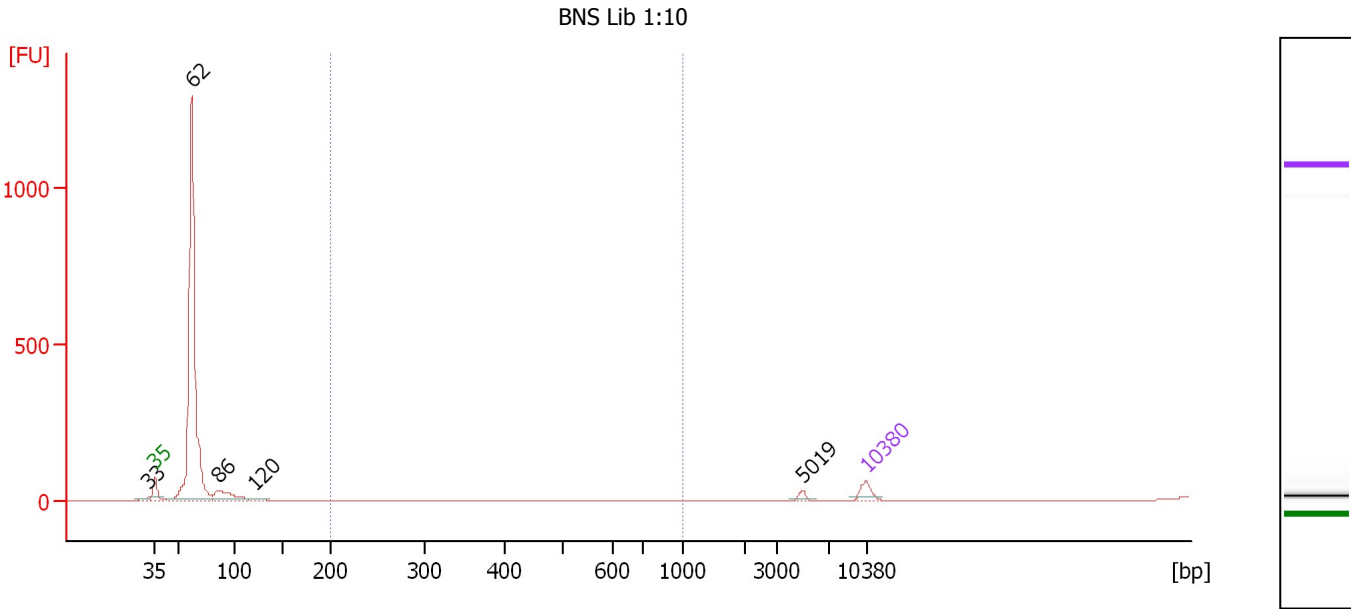
Region table for sample 8 : P66-9 Lib

From [bp]	To [bp]	Average Size [bp]	Molarity [pmol/l]	Conc. [pg/μl]	Corr. Area	% of Total	Size distribution in CV [%]	Color
216	1,000	437	58,371.1	14,964.47	8,996.8	100	30.1	Blue

Assay Class: High Sensitivity DNA Assay
 Data Path: C:\...ents and Settings\Bioanalyzer\2012-07-23\2012-07-23_004.xad

Created: 7/23/2012 4:43:40 PM
 Modified: 7/23/2012 5:22:04 PM

Electropherogram Summary Continued ...



Overall Results for sample 9 : BNS Lib 1:10

Number of peaks found: 5 Corr. Area 1: 0.0
 Noise: 0.3

Peak table for sample 9 : BNS Lib 1:10

Peak	Size [bp]	Conc. [pg/μl]	Molarity [pmol/l]	Observations
1	33	0.00	0.0	
2	35	125.00	5,411.3	Lower Marker
3	62	4,101.85	99,878.9	
4	86	285.08	5,044.0	
5	120	34.28	431.1	
6	5,019	29.66	9.0	
7	10,380	75.00	10.9	Upper Marker

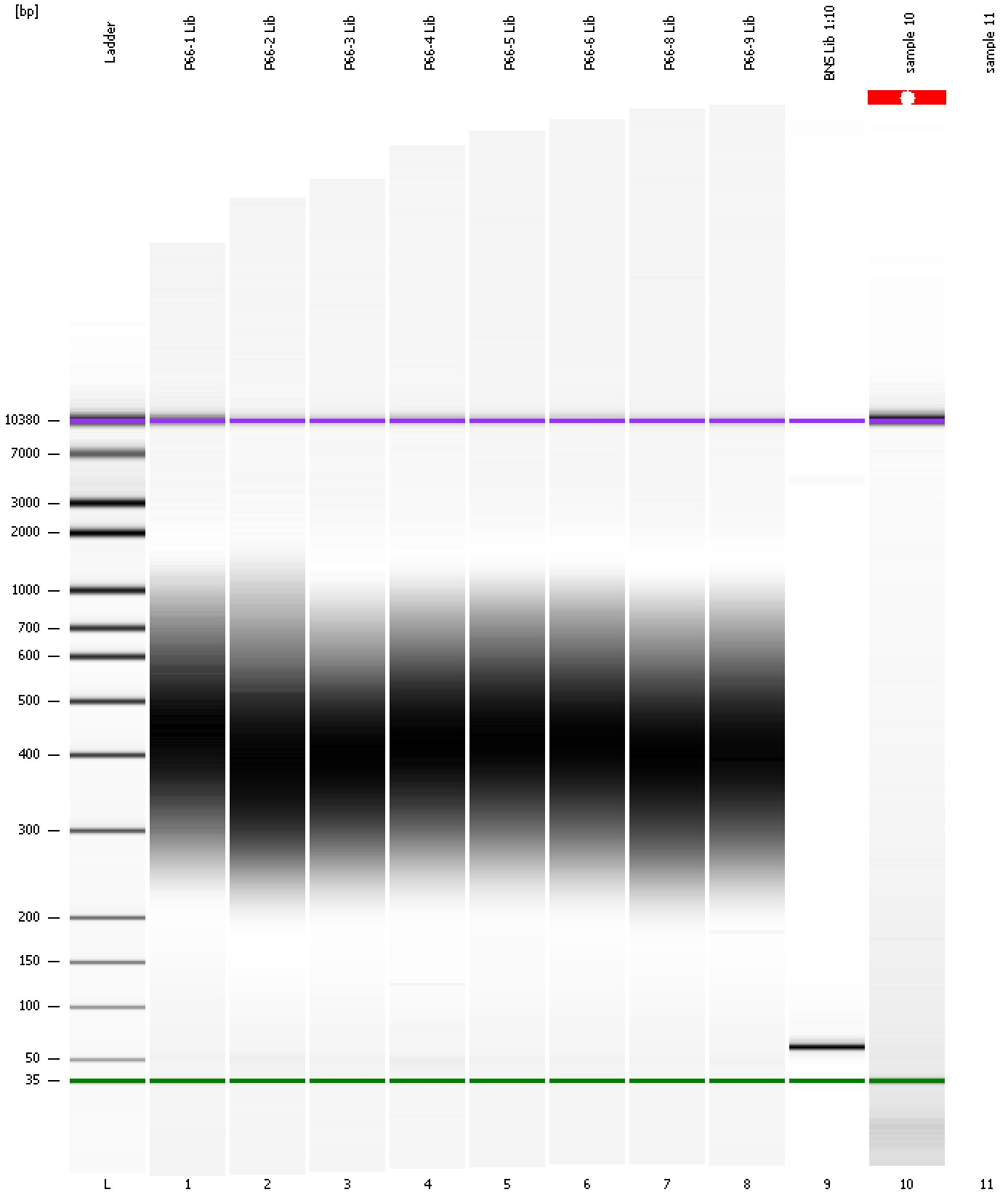
Region table for sample 9 : BNS Lib 1:10

From [bp]	To [bp]	Average Size [bp]	Molarity [pmol/l]	Conc. [pg/μl]	Corr. Area	% of Total	Size distribution in CV [%]	Color
200	1,000	0	0.0	0.00	0.0	0	0.0	Blue

Assay Class: High Sensitivity DNA Assay
Data Path: C:\...ents and Settings\Bioanalyzer\2012-07-23\2012-07-23_004.xad

Created: 7/23/2012 4:43:40 PM
Modified: 7/23/2012 5:22:04 PM

Gel Image



Assay Class: High Sensitivity DNA Assay
Data Path: C:\...ents and Settings\Bioanalyzer\2012-07-23\2012-07-23_004.xad

Created: 7/23/2012 4:43:40 PM
Modified: 7/23/2012 5:22:04 PM

Curves

Standard Curve

