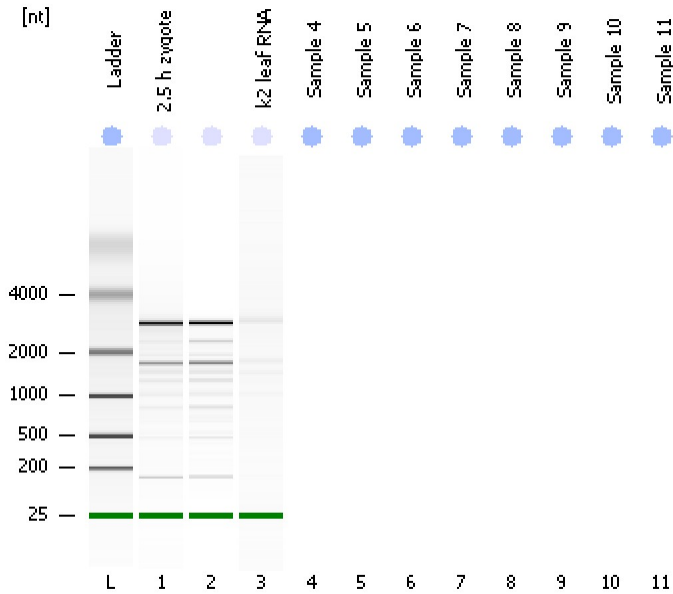


Assay Class: Eukaryote Total RNA Pico
Data Path: C:\...ents and Settings\Bioanalyzer\2012-07-23\2012-07-23_002.xad

Created: 7/23/2012 12:22:03 PM
Modified: 7/23/2012 12:33:32 PM

Electrophoresis File Run Summary



Instrument Information:

Instrument Name: DE13701086 Firmware: C.01.069
Serial#: DE13701086 Type: G2938B

Assay Information:

Assay Origin Path: C:\Program Files\Agilent\2100 bioanalyzer\2100 expert\assays\RNA\Eukaryote Total RNA Pico Series II.xsy

Assay Class: Eukaryote Total RNA Pico

Version: 2.6

Assay Comments: Total RNA Analysis pg sensitivity (Eukaryote)

© Copyright 2003 - 2009 Agilent Technologies, Inc.

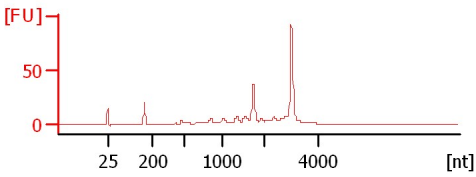
Chip Information:

Chip Lot #:

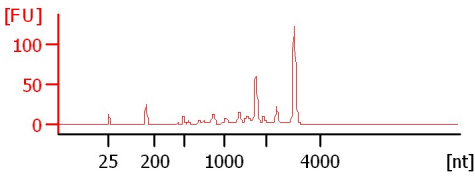
Reagent Kit Lot #:

Chip Comments:

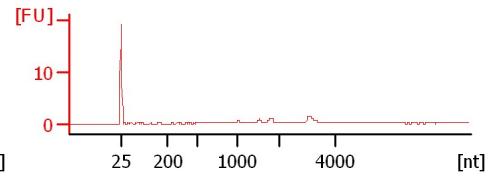
2.5 h zygote
RIN: 8.10



2.5 h zygote
RIN: 7.90



k2 leaf RNA
RIN: 7.10



Assay Class: Eukaryote Total RNA Pico
 Data Path: C:\...ents and Settings\Bioanalyzer\2012-07-23\2012-07-23_002.xad

Created: 7/23/2012 12:22:03 PM
 Modified: 7/23/2012 12:33:32 PM

Electrophoresis File Run Summary (Chip Summary)

Sample Name	Sample Comment	Status	Result Label	Result Color
2.5 h zygote		✓	RIN: 8.10	
		✓	RIN: 7.90	
k2 leaf RNA		✓	RIN: 7.10	
Sample 4				
Sample 5				
Sample 6				
Sample 7				
Sample 8				
Sample 9				
Sample 10				
Sample 11				
Ladder		✓	All Other Samples	

Chip Lot #

Reagent Kit Lot #

Chip Comments :

Assay Class: Eukaryote Total RNA Pico
Data Path: C:\...ents and Settings\Bioanalyzer\2012-07-23\2012-07-23_002.xad

Created: 7/23/2012 12:22:03 PM
Modified: 7/23/2012 12:33:32 PM

Electrophoresis Assay Details

General Analysis Settings

Number of Available Sample and Ladder Wells (Max.) : 12
Minimum Visible Range [s] : 17
Maximum Visible Range [s] : 70
Start Analysis Time Range [s] : 18
End Analysis Time Range [s] : 69
Ladder Concentration [pg/μl] : 1000
Lower Marker Concentration [pg/μl] : 0
Upper Marker Concentration [pg/μl] : 0
Used Lower Marker for Quantitation
Standard Curve Fit is Logarithmic
Show Data Aligned to Lower Marker

Integrator Settings

Integration Start Time [s] : 18
Integration End Time [s] : 69
Slope Threshold : 0.6
Height Threshold [FU] : 0.5
Area Threshold : 0.2
Width Threshold [s] : 0.3
Baseline Plateau [s] : 6

Filter Settings

Filter Width [s] : 0.5
Polynomial Order : 4

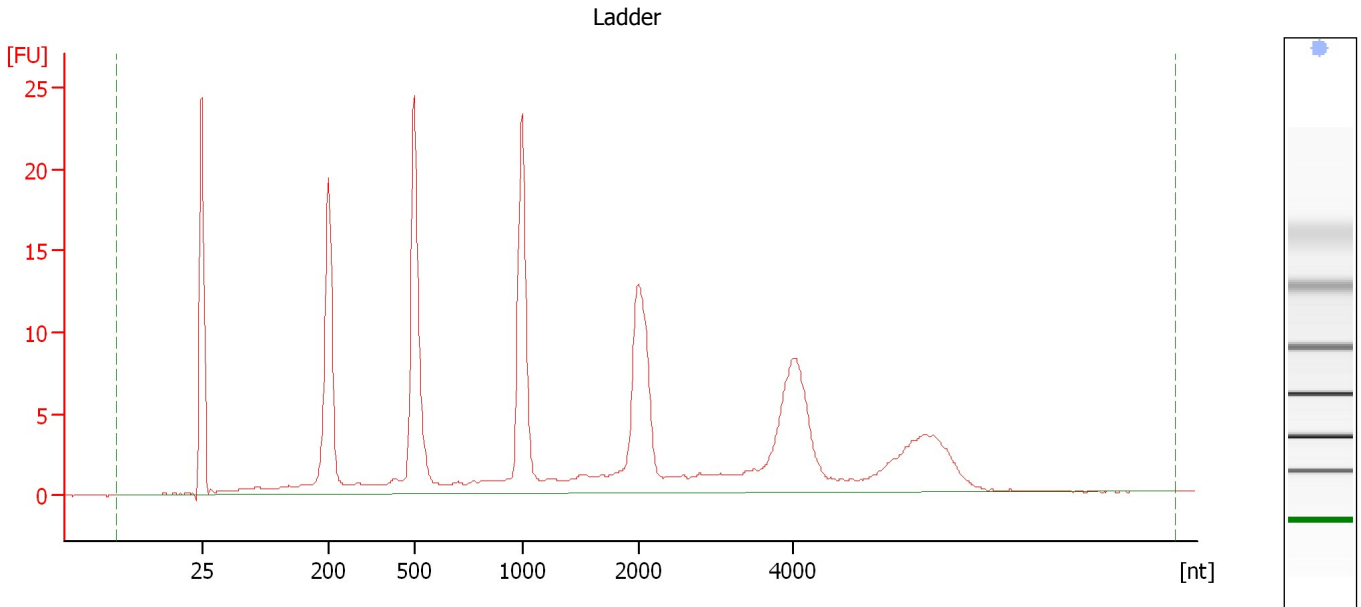
Ladder

Ladder Peak	Size
1	25
2	200
3	500
4	1000
5	2000
6	4000

Assay Class: Eukaryote Total RNA Pico
Data Path: C:\...ents and Settings\Bioanalyzer\2012-07-23\2012-07-23_002.xad

Created: 7/23/2012 12:22:03 PM
Modified: 7/23/2012 12:33:32 PM

Electropherogram Summary



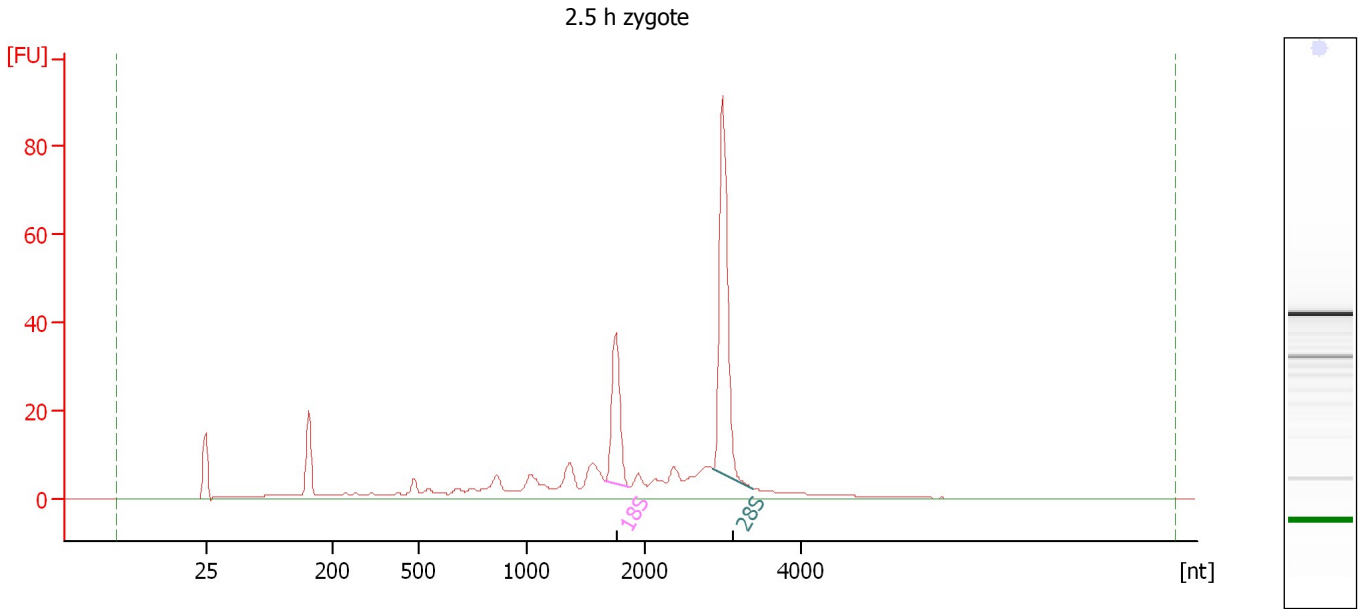
Overall Results for Ladder

RNA Area:	199.5	Result Flagging Color:	
RNA Concentration:	1,000 pg/μl	Result Flagging Label:	All Other Samples

Assay Class: Eukaryote Total RNA Pico
Data Path: C:\...ents and Settings\Bioanalyzer\2012-07-23\2012-07-23_002.xad

Created: 7/23/2012 12:22:03 PM
Modified: 7/23/2012 12:33:32 PM

Electropherogram Summary Continued ...



Overall Results for sample 1 : 2.5 h zygote

RNA Area:	310.2	RNA Integrity Number (RIN):	8.1 (B.02.08)
RNA Concentration:	1,555 pg/μl	Result Flagging Color:	
rRNA Ratio [28s / 18s]:	2.2	Result Flagging Label:	RIN: 8.10

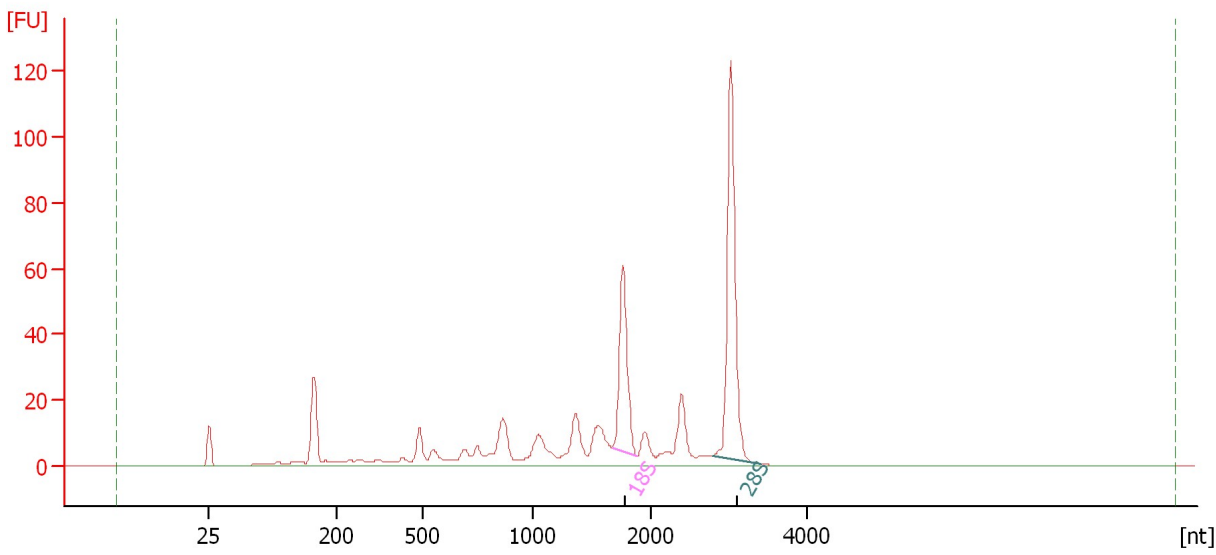
Fragment table for sample 1 : 2.5 h zygote

Name	Start Size [nt]	End Size [nt]	Area	% of total Area
18S	1,666	1,875	34.3	11.0
28S	2,882	3,389	76.5	24.7

Assay Class: Eukaryote Total RNA Pico
Data Path: C:\...ents and Settings\Bioanalyzer\2012-07-23\2012-07-23_002.xad

Created: 7/23/2012 12:22:03 PM
Modified: 7/23/2012 12:33:32 PM

Electropherogram Summary Continued ...



Overall Results for sample 2 :

RNA Area:	416.9	RNA Integrity Number (RIN):	7.9 (B.02.08)
RNA Concentration:	2,090 pg/μl	Result Flagging Color:	
rRNA Ratio [28s / 18s]:	1.9	Result Flagging Label:	RIN: 7.90

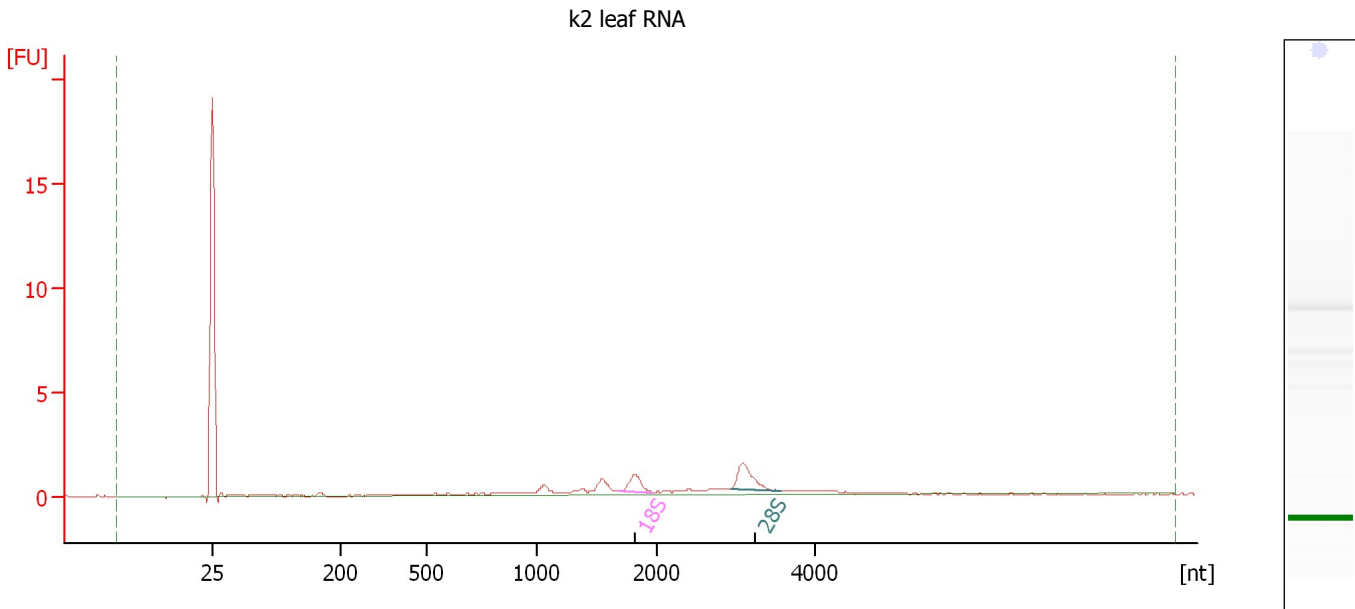
Fragment table for sample 2 :

Name	Start Size [nt]	End Size [nt]	Area	% of total Area
18S	1,681	1,889	56.0	13.4
28S	2,800	3,413	108.9	26.1

Assay Class: Eukaryote Total RNA Pico
 Data Path: C:\...ents and Settings\Bioanalyzer\2012-07-23\2012-07-23_002.xad

Created: 7/23/2012 12:22:03 PM
 Modified: 7/23/2012 12:33:32 PM

Electropherogram Summary Continued ...



Overall Results for sample 3 : k2 leaf RNA

RNA Area:	15.6	RNA Integrity Number (RIN):	7.1 (B.02.08)
RNA Concentration:	78 pg/μl	Result Flagging Color:	
rRNA Ratio [28s / 18s]:	1.6	Result Flagging Label:	RIN: 7.10

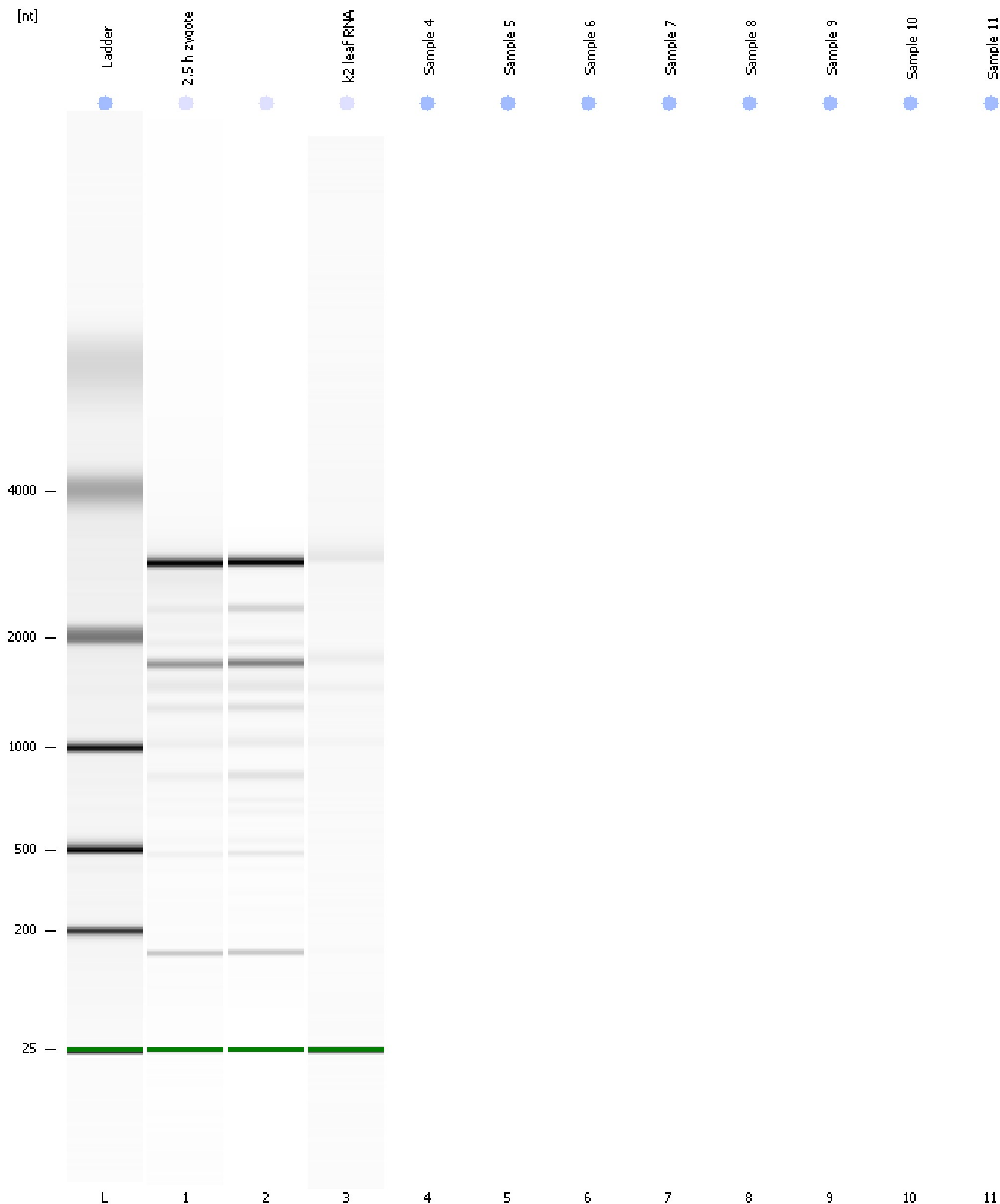
Fragment table for sample 3 : k2 leaf RNA

Name	Start Size [nt]	End Size [nt]	Area	% of total Area
18S	1,677	1,974	1.3	8.3
28S	2,949	3,586	2.1	13.7

Assay Class: Eukaryote Total RNA Pico
Data Path: C:\...ents and Settings\Bioanalyzer\2012-07-23\2012-07-23_002.xad

Created: 7/23/2012 12:22:03 PM
Modified: 7/23/2012 12:33:32 PM

Gel Image

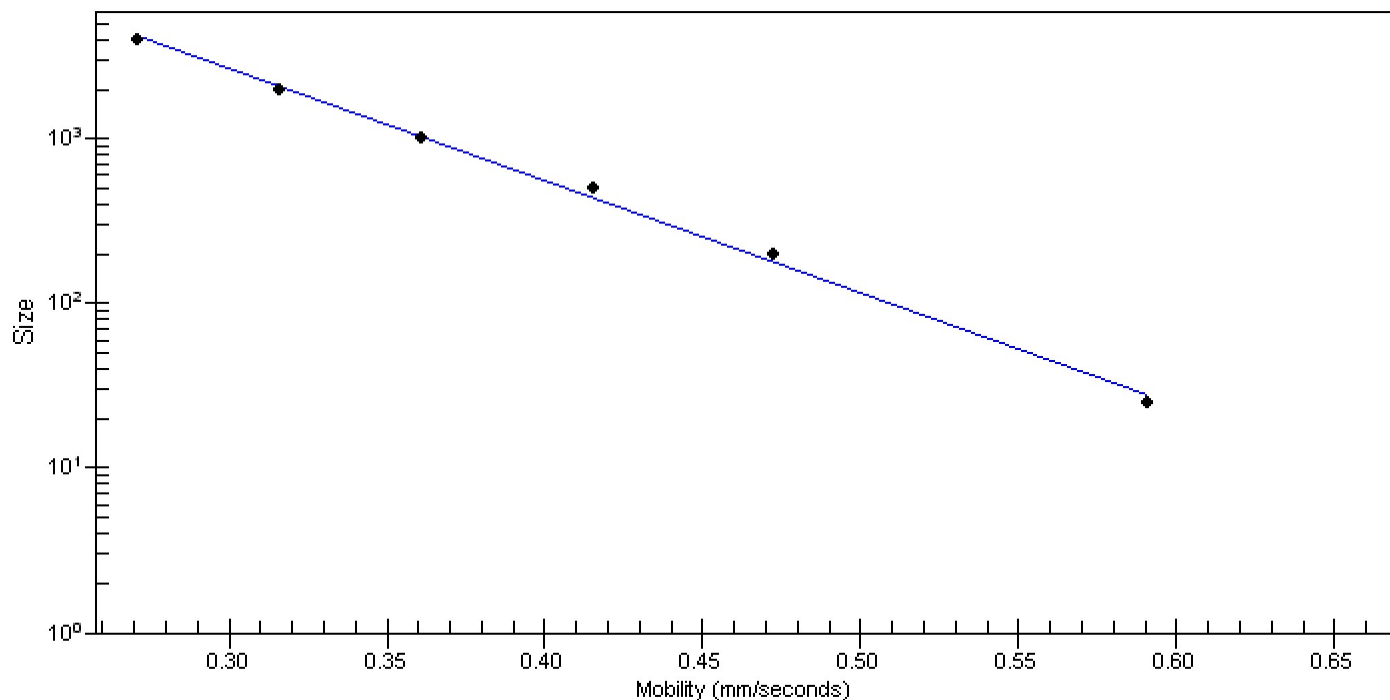


Assay Class: Eukaryote Total RNA Pico
Data Path: C:\...ents and Settings\Bioanalyzer\2012-07-23\2012-07-23_002.xad

Created: 7/23/2012 12:22:03 PM
Modified: 7/23/2012 12:33:32 PM

Curves

Standard Curve



Assay Class: Eukaryote Total RNA Pico
Data Path: C:\...ents and Settings\Bioanalyzer\2012-07-23\2012-07-23_002.xad

Created: 7/23/2012 12:22:03 PM
Modified: 7/23/2012 12:33:32 PM

Invalid Samples

- Sample 4 has not been run, no results available.
- Sample 5 has not been run, no results available.
- Sample 6 has not been run, no results available.
- Sample 7 has not been run, no results available.
- Sample 8 has not been run, no results available.
- Sample 9 has not been run, no results available.
- Sample 10 has not been run, no results available.
- Sample 11 has not been run, no results available.