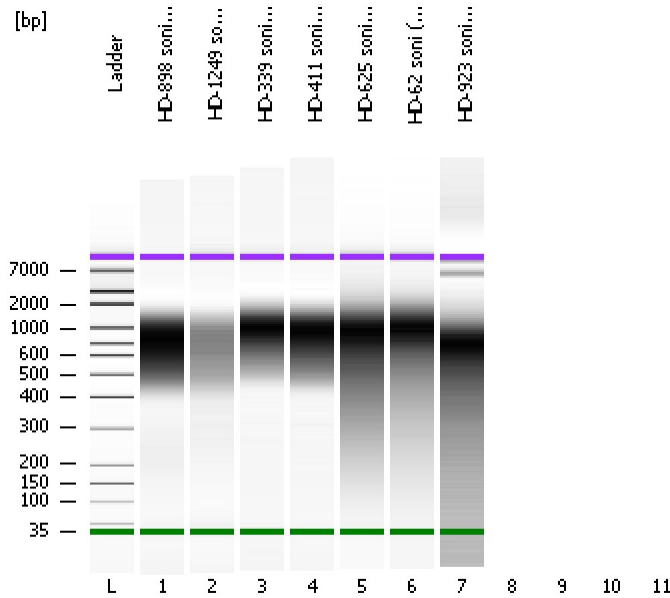


Assay Class: High Sensitivity DNA Assay
Data Path: C:\...ents and Settings\Bioanalyzer\2012-07-24\2012-07-24_001.xad

Created: 7/24/2012 9:15:28 AM
Modified: 7/24/2012 9:45:26 AM

Electrophoresis File Run Summary



Instrument Information:

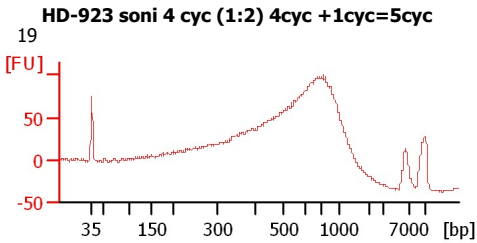
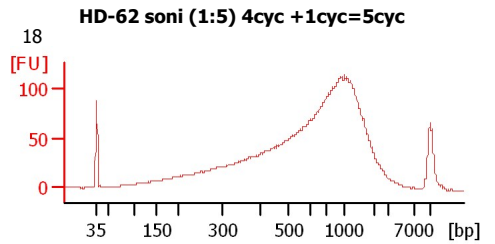
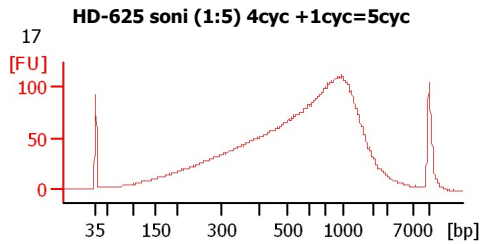
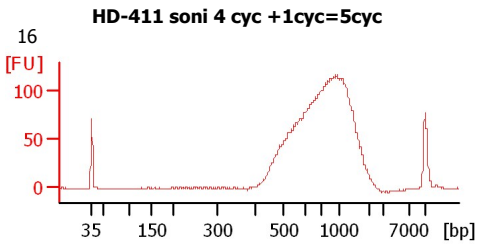
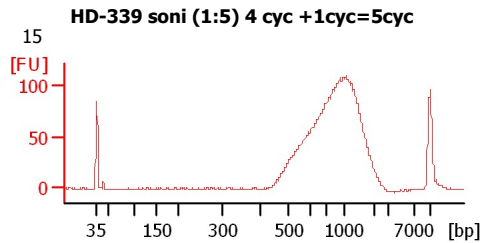
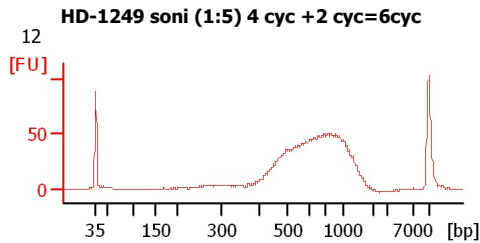
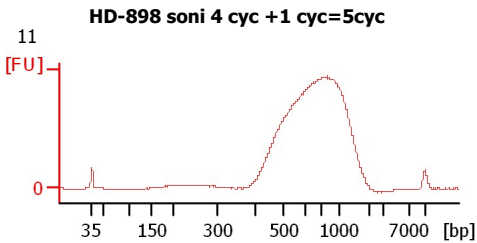
Instrument Name: DE13701086 Firmware: C.01.069
Serial#: DE13701086 Type: G2938B

Assay Information:

Assay Origin Path: C:\Program Files\Agilent\2100 bioanalyzer\2100 expert\assays\dsDNA\High Sensitivity DNA.xsy
Assay Class: High Sensitivity DNA Assay
Version: 1.03
Assay Comments: Copyright © 2003-2010 Agilent Technologies

Chip Information:

Chip Lot #:
Reagent Kit Lot #:
Chip Comments:



Assay Class: High Sensitivity DNA Assay
Data Path: C:\...ents and Settings\Bioanalyzer\2012-07-24\2012-07-24_001.xad

Created: 7/24/2012 9:15:28 AM
Modified: 7/24/2012 9:45:26 AM

Electrophoresis File Run Summary (Chip Summary)

Sample Name	Sample Comment	Rest. Digest	Status	Observation	Result Label	Result Color
HD-898 soni 4 cyc +1 cyc=5cyc	11	<input type="checkbox"/>	✓			
HD-1249 soni (1:5) 4 cyc +2 cyc=6cyc	12	<input type="checkbox"/>	✓			
HD-339 soni (1:5) 4 cyc +1cyc=5cyc	15	<input type="checkbox"/>	✓			
HD-411 soni 4 cyc +1cyc=5cyc	16	<input type="checkbox"/>	✓			
HD-625 soni (1:5) 4cyc +1cyc=5cyc	17	<input type="checkbox"/>	✓			
HD-62 soni (1:5) 4cyc	18	<input type="checkbox"/>	✓			
HD-923 soni 4 cyc (1:2) 4cyc +1cyc=5cyc	19	<input type="checkbox"/>	✓			
		<input type="checkbox"/>				
		<input type="checkbox"/>				
		<input type="checkbox"/>				
		<input type="checkbox"/>				
Ladder		<input type="checkbox"/>	✓			

Chip Lot #

Reagent Kit Lot #

Chip Comments :

Assay Class: High Sensitivity DNA Assay
Data Path: C:\...ents and Settings\Bioanalyzer\2012-07-24\2012-07-24_001.xad

Created: 7/24/2012 9:15:28 AM
Modified: 7/24/2012 9:45:26 AM

Electrophoresis Assay Details

General Analysis Settings

Number of Available Sample and Ladder Wells (Max.) : 12
Minimum Visible Range [s] : 32
Maximum Visible Range [s] : 138
Start Analysis Time Range [s] : 33
End Analysis Time Range [s] : 137.5
Ladder Concentration [pg/μl] : 1950
Uses Standard Area for Ladder Fragments
Lower Marker Concentration [pg/μl] : 125
Upper Marker Concentration [pg/μl] : 75
Used Upper Marker for Quantitation
Standard Curve Fit is Point to Point
Show Data Aligned to Lower and Upper Marker

Integrator Settings

Integration Start Time [s] : 33.05
Integration End Time [s] : 137
Slope Threshold : 0.8
Height Threshold [FU] : 5
Area Threshold : 0.1
Width Threshold [s] : 0.6
Baseline Plateau [s] : 0.5

Filter Settings

Filter Width [s] : 0.5
Polynomial Order : 4

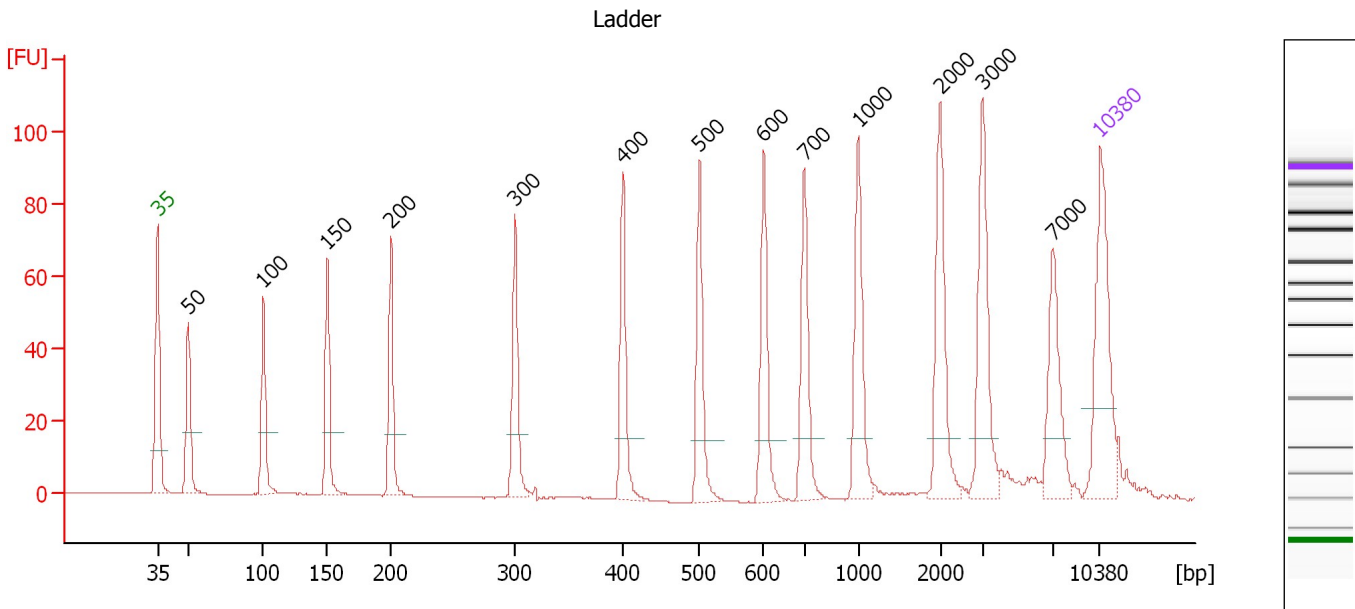
Ladder

Ladder Peak	Size	Area
1	35	160
2	50	210
3	100	208
4	150	221
5	200	242
6	300	270
7	400	305
8	500	306
9	600	336
10	700	321
11	1000	366
12	2000	413
13	3000	411
14	7000	400
15	10380	214

Assay Class: High Sensitivity DNA Assay
 Data Path: C:\...ents and Settings\Bioanalyzer\2012-07-24\2012-07-24_001.xad

Created: 7/24/2012 9:15:28 AM
 Modified: 7/24/2012 9:45:26 AM

Electropherogram Summary



Overall Results for Ladder

Noise: 0.1

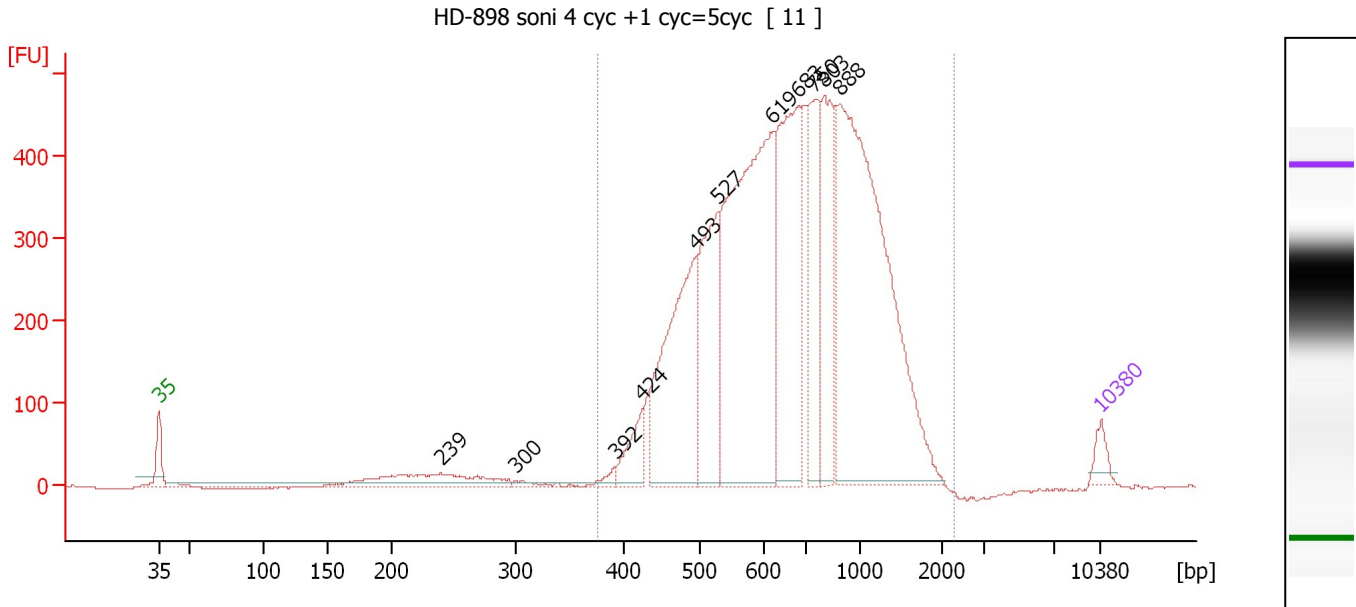
Peak table for Ladder

Peak	Size [bp]	Conc. [pg/μl]	Molarity [pmol/l]	Observations
1	35	125.00	5,411.3	Lower Marker
2	50	150.00	4,545.5	Ladder Peak
3	100	150.00	2,272.7	Ladder Peak
4	150	150.00	1,515.2	Ladder Peak
5	200	150.00	1,136.4	Ladder Peak
6	300	150.00	757.6	Ladder Peak
7	400	150.00	568.2	Ladder Peak
8	500	150.00	454.5	Ladder Peak
9	600	150.00	378.8	Ladder Peak
10	700	150.00	324.7	Ladder Peak
11	1,000	150.00	227.3	Ladder Peak
12	2,000	150.00	113.6	Ladder Peak
13	3,000	150.00	75.8	Ladder Peak
14	7,000	150.00	32.5	Ladder Peak
15	10,380	75.00	10.9	Upper Marker

Assay Class: High Sensitivity DNA Assay
 Data Path: C:\...ents and Settings\Bioanalyzer\2012-07-24\2012-07-24_001.xad

Created: 7/24/2012 9:15:28 AM
 Modified: 7/24/2012 9:45:26 AM

Electropherogram Summary Continued ...



Overall Results for sample 1 : HD-898 soni 4 cyc +1 cyc=5cyc

Number of peaks found: 11 Corr. Area 1: 8,125.9
 Noise: 0.4

Peak table for sample 1 : HD-898 soni 4 cyc +1 cyc=5cyc

Peak	Size [bp]	Conc. [pg/μl]	Molarity [pmol/l]	Observations
1	35	125.00	5,411.3	Lower Marker
2	239	453.06	2,868.6	
3	300	35.66	180.3	
4	392	43.34	167.5	
5	424	216.35	772.2	
6	493	1,336.23	4,105.0	
7	527	841.33	2,417.3	
8	619	2,496.80	6,112.1	
9	683	1,398.01	3,102.3	
10	750	708.55	1,432.3	
11	803	687.22	1,296.9	
12	888	2,862.42	4,882.8	
13	10,380	75.00	10.9	Upper Marker

Region table for sample 1 : HD-898 soni 4 cyc +1 cyc=5cyc

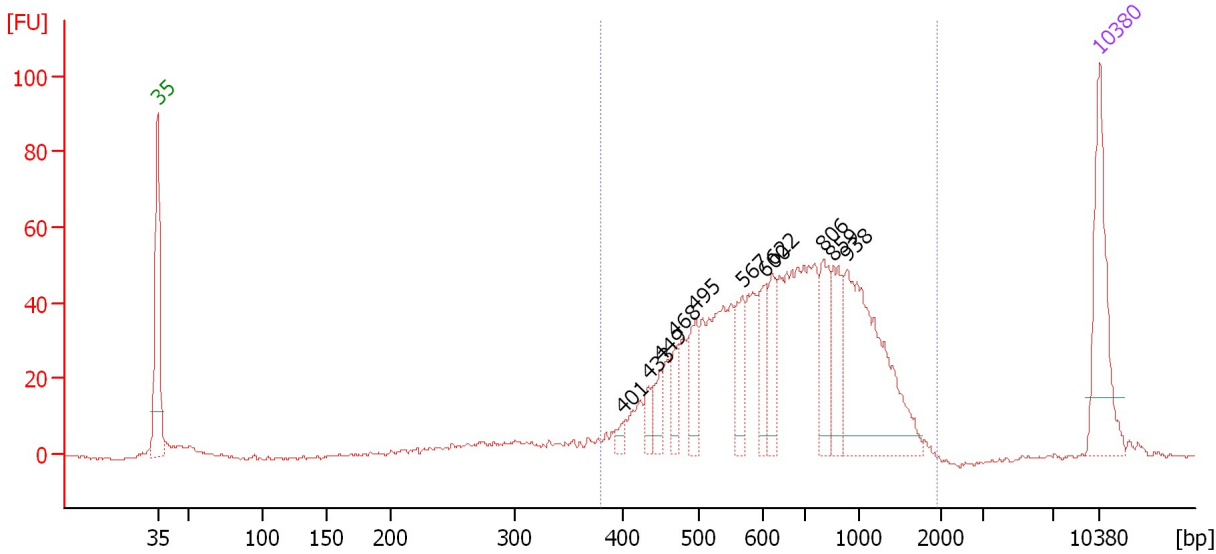
From [bp]	To [bp]	Average Size [bp]	Molarity [pmol/l]	Conc. [pg/μl]	Corr. Area	% of Total	Size distribution in CV [%]	Color
375	2,299	767	25,094.8	10,917.05	8,125.9	98	39.3	Blue

Assay Class: High Sensitivity DNA Assay
 Data Path: C:\...ents and Settings\Bioanalyzer\2012-07-24\2012-07-24_001.xad

Created: 7/24/2012 9:15:28 AM
 Modified: 7/24/2012 9:45:26 AM

Electropherogram Summary Continued ...

HD-1249 soni (1:5) 4 cyc +2 cyc=6cyc [12]



Overall Results for sample 2 : HD-1249 soni (1:5) 4 cyc + 2 cyc=6cyc

Number of peaks found: 11 Corr. Area 1: 893.8
 Noise: 0.4

Peak table for sample 2 : HD-1249 soni (1:5) 4 cyc + 2 cyc=6cyc

Peak	Size [bp]	Conc. [pg/µl]	Molarity [pmol/l]	Observations
1	35	125.00	5,411.3	Lower Marker
2	401	7.35	27.8	
3	433	15.62	54.6	
4	449	21.30	71.8	
5	468	24.86	80.4	
6	495	38.00	116.3	
7	567	36.63	98.0	
8	600	35.64	89.9	
9	622	35.12	85.5	
10	806	45.95	86.4	
11	859	43.17	76.1	
12	938	167.71	270.9	
13	10,380	75.00	10.9	Upper Marker

Region table for sample 2 : HD-1249 soni (1:5) 4 cyc + 2 cyc=6cyc

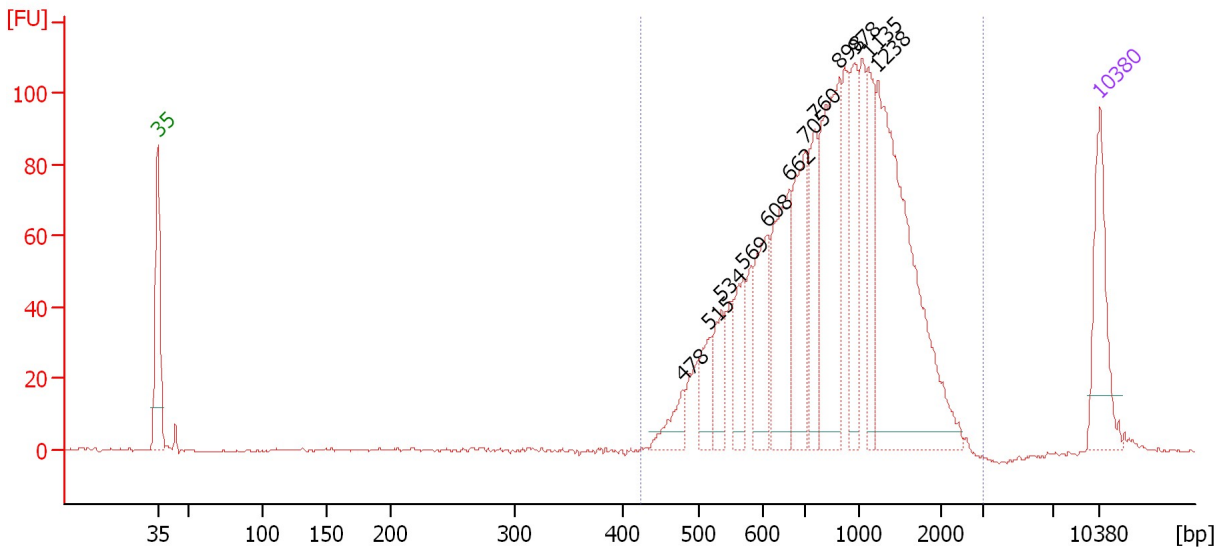
From [bp]	To [bp]	Average Size [bp]	Molarity [pmol/l]	Conc. [pg/µl]	Corr. Area	% of Total	Size distribution in CV [%]	Color
380	1,957	737	2,080.5	874.05	893.8	93	38.3	Blue

Assay Class: High Sensitivity DNA Assay
 Data Path: C:\...ents and Settings\Bioanalyzer\2012-07-24\2012-07-24_001.xad

Created: 7/24/2012 9:15:28 AM
 Modified: 7/24/2012 9:45:26 AM

Electropherogram Summary Continued ...

HD-339 soni (1:5) 4 cyc +1cyc=5cyc [15]



Overall Results for sample 3 : HD-339 soni (1:5) 4 cyc +1cyc=5cyc

Number of peaks found: 12 Corr. Area 1: 1,438.3
 Noise: 0.3

Peak table for sample 3 : HD-339 soni (1:5) 4 cyc +1cyc=5cyc

Peak	Size [bp]	Conc. [pg/μl]	Molarity [pmol/l]	Observations
1	35	125.00	5,411.3	Lower Marker
2	478	33.28	105.5	
3	515	43.70	128.5	
4	534	47.81	135.6	
5	569	51.75	137.9	
6	608	91.35	227.7	
7	662	129.62	296.6	
8	705	109.05	234.4	
9	760	81.31	162.2	
10	898	177.90	300.1	
11	978	77.45	119.9	
12	1,135	67.77	90.5	
13	1,238	324.01	396.5	
14	10,380	75.00	10.9	Upper Marker

Region table for sample 3 : HD-339 soni (1:5) 4 cyc +1cyc=5cyc

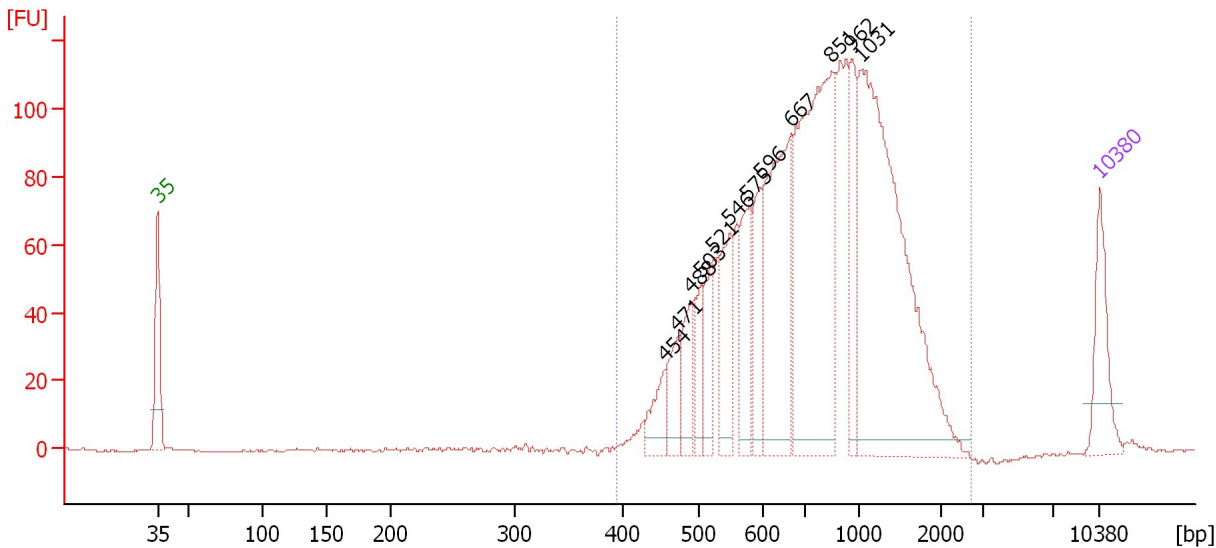
From [bp]	To [bp]	Average Size [bp]	Molarity [pmol/l]	Conc. [pg/μl]	Corr. Area	% of Total	Size distribution in CV [%]	Color
424	3,065	963	2,778.1	1,470.06	1,438.3	99	41.6	Blue

Assay Class: High Sensitivity DNA Assay
 Data Path: C:\...ents and Settings\Bioanalyzer\2012-07-24\2012-07-24_001.xad

Created: 7/24/2012 9:15:28 AM
 Modified: 7/24/2012 9:45:26 AM

Electropherogram Summary Continued ...

HD-411 soni 4 cyc +1cyc=5cyc [16]



Overall Results for sample 4 : HD-411 soni 4 cyc +1cyc=5cyc

Number of peaks found: 12 Corr. Area 1: 1,728.0
 Noise: 0.2

Peak table for sample 4 : HD-411 soni 4 cyc +1cyc=5cyc

Peak	Size [bp]	Conc. [pg/µl]	Molarity [pmol/l]	Observations
1	35	125.00	5,411.3	Lower Marker
2	454	53.75	179.3	
3	471	60.37	194.3	
4	488	75.27	233.7	
5	503	56.08	168.9	
6	521	74.62	217.1	
7	546	109.42	303.4	
8	575	103.63	272.9	
9	596	89.88	228.5	
10	667	298.35	678.0	
11	851	488.68	870.3	
12	962	108.50	170.8	
13	1,031	589.28	865.7	
14	10,380	75.00	10.9	Upper Marker

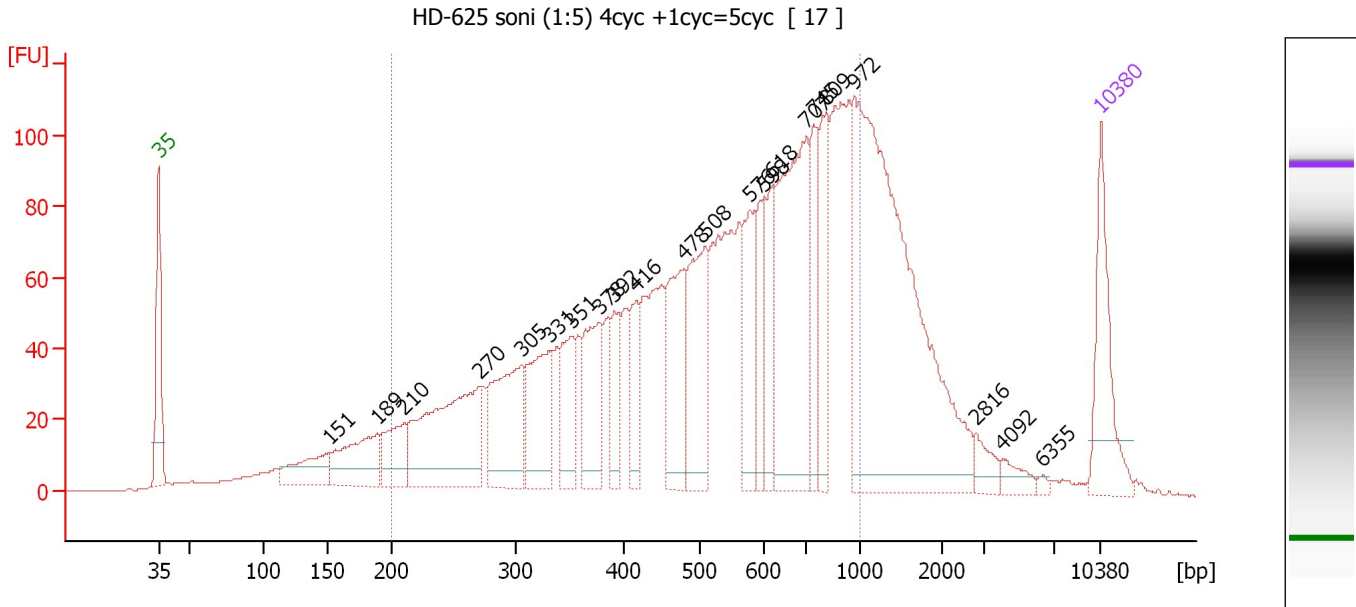
Region table for sample 4 : HD-411 soni 4 cyc +1cyc=5cyc

From [bp]	To [bp]	Average Size [bp]	Molarity [pmol/l]	Conc. [pg/µl]	Corr. Area	% of Total	Size distribution in CV [%]	Color
395	2,750	875	4,786.3	2,306.81	1,728.0	100	42.1	Blue

Assay Class: High Sensitivity DNA Assay
 Data Path: C:\...ents and Settings\Bioanalyzer\2012-07-24\2012-07-24_001.xad

Created: 7/24/2012 9:15:28 AM
 Modified: 7/24/2012 9:45:26 AM

Electropherogram Summary Continued ...



Overall Results for sample 5 : HD-625 soni (1:5) 4cyc +1cyc=5cyc

Number of peaks found: 22 Corr. Area 1: 2,488.3
 Noise: 0.2

Peak table for sample 5 : HD-625 soni (1:5) 4cyc +1cyc=5cyc

Peak	Size [bp]	Conc. [pg/μl]	Molarity [pmol/l]	Observations
1	35	125.00	5,411.3	Lower Marker
2	151	63.50	638.6	
3	189	96.66	775.7	
4	210	64.90	468.8	
5	270	227.32	1,274.2	
6	305	139.66	692.9	
7	331	110.61	507.1	
8	351	70.43	303.8	
9	378	97.20	390.0	
10	392	46.30	179.2	
11	416	51.01	185.6	
12	478	108.20	342.9	
13	508	134.44	401.3	
14	576	80.17	210.9	
15	598	55.36	140.3	
16	618	62.08	152.1	
17	707	254.55	545.7	
18	745	68.35	139.1	
19	809	73.14	137.0	
20	972	510.47	795.5	
21	2,816	18.34	9.9	
22	4,092	13.71	5.1	
23	6,355	3.28	0.8	
24	10,380	75.00	10.9	Upper Marker

Assay Class: High Sensitivity DNA Assay
Data Path: C:\...ents and Settings\Bioanalyzer\2012-07-24\2012-07-24_001.xad

Created: 7/24/2012 9:15:28 AM
Modified: 7/24/2012 9:45:26 AM

Electropherogram Summary Continued ...

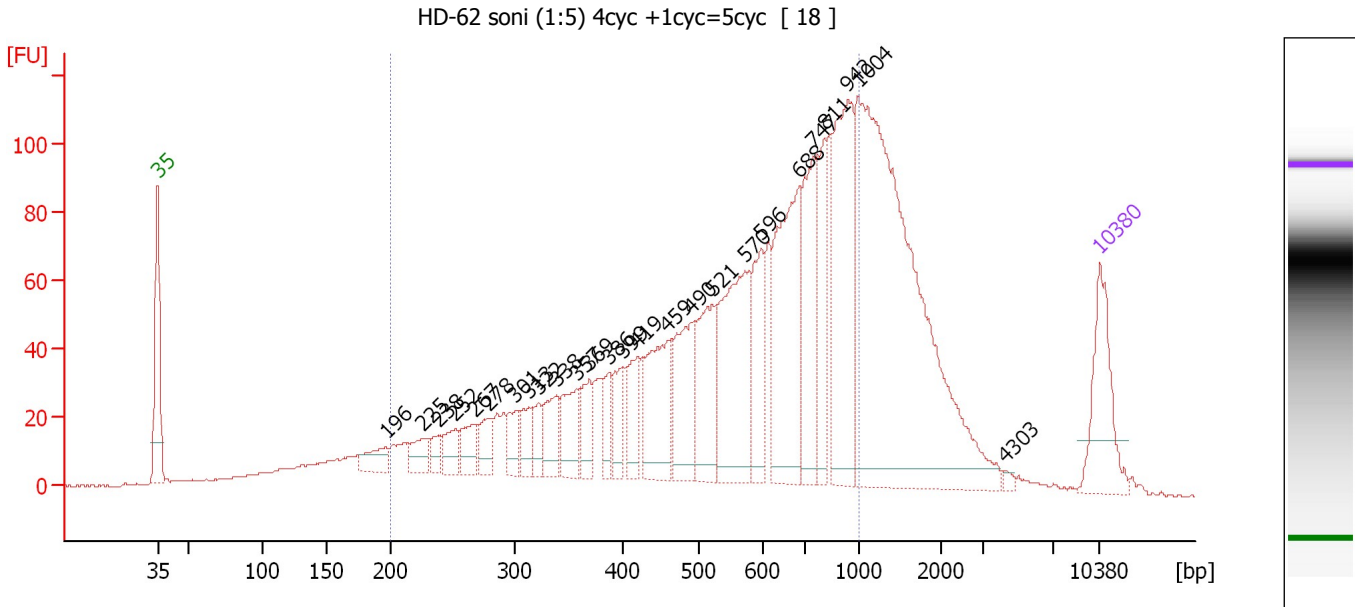
... Region table for sample 5 : HD-625 soni (1:5) 4cyc +1cyc=5cyc

From [bp]	To [bp]	Average Size [bp]	Molarity [pmol/l]	Conc. [pg/μl]	Corr. Area	% of Total	Size distribution in CV [%]	Color
200	1,000	542	8,737.0	2,473.91	2,488.3	74	37.8	■

Assay Class: High Sensitivity DNA Assay
 Data Path: C:\...ents and Settings\Bioanalyzer\2012-07-24\2012-07-24_001.xad

Created: 7/24/2012 9:15:28 AM
 Modified: 7/24/2012 9:45:26 AM

Electropherogram Summary Continued ...



Overall Results for sample 6 : HD-62 soni (1:5) 4cyc +1cyc=5cyc

Number of peaks found: 26 Corr. Area 1: 1,972.8
 Noise: 0.2

Peak table for sample 6 : HD-62 soni (1:5) 4cyc +1cyc=5cyc

Peak	Size [bp]	Conc. [pg/μl]	Molarity [pmol/l]	Observations
1	35	125.00	5,411.3	Lower Marker
2	196	33.74	260.9	
3	225	33.55	226.0	
4	238	19.27	122.5	
5	252	34.51	207.6	
6	267	38.08	216.1	
7	278	34.09	185.6	
8	301	32.16	162.1	
9	313	32.90	159.3	
10	322	24.66	116.1	
11	338	49.51	221.6	
12	357	59.90	254.1	
13	369	44.66	183.4	
14	386	33.06	129.6	
15	399	38.54	146.2	
16	419	49.12	177.5	
17	459	116.25	384.1	
18	490	99.90	308.9	
19	521	104.75	304.4	
20	570	180.69	480.1	
21	596	87.43	222.2	
22	688	206.20	454.3	
23	747	136.20	276.3	
24	811	78.91	147.5	
25	942	195.87	315.1	
26	1,004	619.64	934.7	

Assay Class: High Sensitivity DNA Assay
 Data Path: C:\...ents and Settings\Bioanalyzer\2012-07-24\2012-07-24_001.xad


Created: 7/24/2012 9:15:28 AM
 Modified: 7/24/2012 9:45:26 AM

Electropherogram Summary Continued ...

... Peak table for sample 6 : HD-62 soni (1:5) 4cyc +1cyc=5cyc

Peak	Size [bp]	Conc. [pg/μl]	Molarity [pmol/l]	Observations
27	4,303	4.10	1.4	
28	10,380	75.00	10.9	Upper Marker

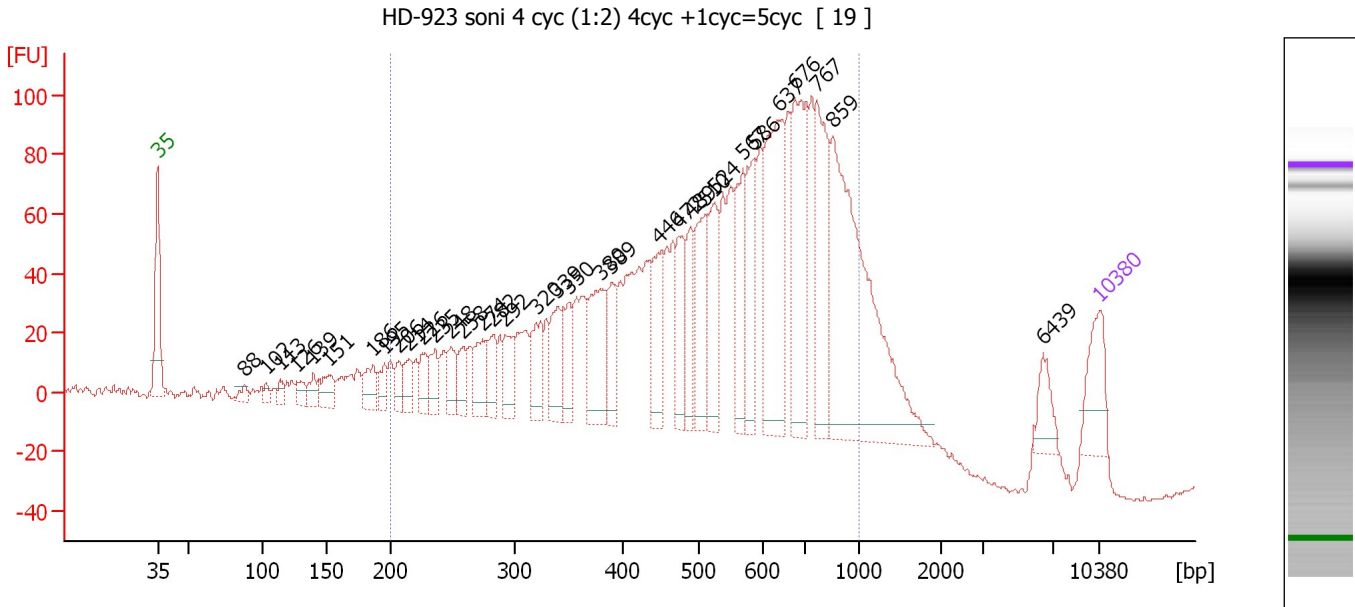
Region table for sample 6 : HD-62 soni (1:5) 4cyc +1cyc=5cyc

From [bp]	To [bp]	Average Size [bp]	Molarity [pmol/l]	Conc. [pg/μl]	Corr. Area	% of Total	Size distribution in CV [%]	Color
200	1,000	572	7,483.0	2,232.42	1,972.8	70	36.6	

Assay Class: High Sensitivity DNA Assay
 Data Path: C:\...ents and Settings\Bioanalyzer\2012-07-24\2012-07-24_001.xad

Created: 7/24/2012 9:15:28 AM
 Modified: 7/24/2012 9:45:26 AM

Electropherogram Summary Continued ...



Overall Results for sample 7 : HD-923 soni 4 cyc (1:2) 4cyc +1cyc=5cyc

Number of peaks found: 34 Corr. Area 1: 2,478.2
 Noise: 0.8

Peak table for sample 7 : HD-923 soni 4 cyc (1:2) 4cyc +1cyc=5cyc

Peak	Size [bp]	Conc. [pg/μl]	Molarity [pmol/l]	Observations
1	35	125.00	5,411.3	Lower Marker
2	88	19.95	343.8	
3	102	18.11	269.4	
4	113	20.00	268.9	
5	126	26.51	318.5	
6	139	34.02	370.7	
7	151	49.85	498.7	
8	186	52.52	427.7	
9	195	35.51	276.2	
10	206	36.43	268.2	
11	214	43.77	309.4	
12	226	50.89	341.9	
13	235	48.89	315.1	
14	248	51.38	314.1	
15	258	50.75	297.5	
16	274	76.73	424.5	
17	282	53.97	289.6	
18	292	62.24	323.0	
19	320	82.40	390.7	
20	339	88.06	393.4	
21	350	76.44	331.3	
22	380	146.32	584.0	
23	389	78.53	305.5	
24	446	103.06	349.9	
25	472	92.41	296.6	
26	489	94.36	292.2	

Assay Class: High Sensitivity DNA Assay
 Data Path: C:\...ents and Settings\Bioanalyzer\2012-07-24\2012-07-24_001.xad

Created: 7/24/2012 9:15:28 AM
 Modified: 7/24/2012 9:45:26 AM

Electropherogram Summary Continued ...

... Peak table for sample 7 : HD-923 soni 4 cyc (1:2) 4cyc +1cyc=5cyc

Peak	Size [bp]	Conc. [pg/µl]	Molarity [pmol/l]	Observations
27	510	125.90	374.2	
28	524	137.85	398.5	
29	567	139.26	372.1	
30	586	120.22	311.1	
31	637	285.33	678.7	
32	676	253.88	569.2	
33	767	187.84	371.2	
34	859	549.20	968.5	
35	6,439	43.68	10.3	
36	▶ 10,380	75.00	10.9	Upper Marker

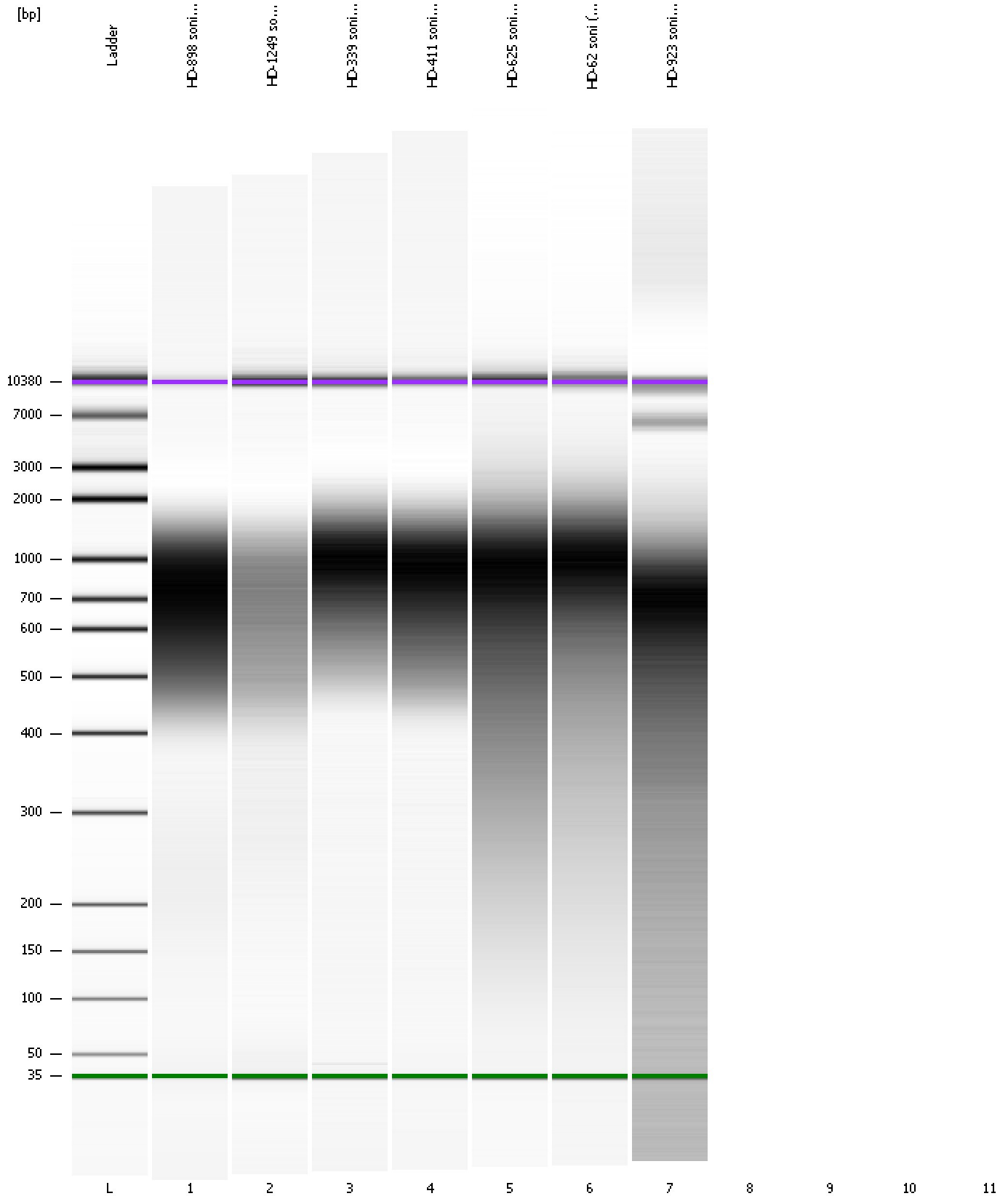
Region table for sample 7 : HD-923 soni 4 cyc (1:2) 4cyc +1cyc=5cyc

From [bp]	To [bp]	Average Size [bp]	Molarity [pmol/l]	Conc. [pg/µl]	Corr. Area	% of Total	Size distribution in CV [%]	Color
200	1,000	546	13,884.7	4,050.34	2,478.2	86	35.1	■

Assay Class: High Sensitivity DNA Assay
Data Path: C:\...ents and Settings\Bioanalyzer\2012-07-24\2012-07-24_001.xad

Created: 7/24/2012 9:15:28 AM
Modified: 7/24/2012 9:45:26 AM

Gel Image

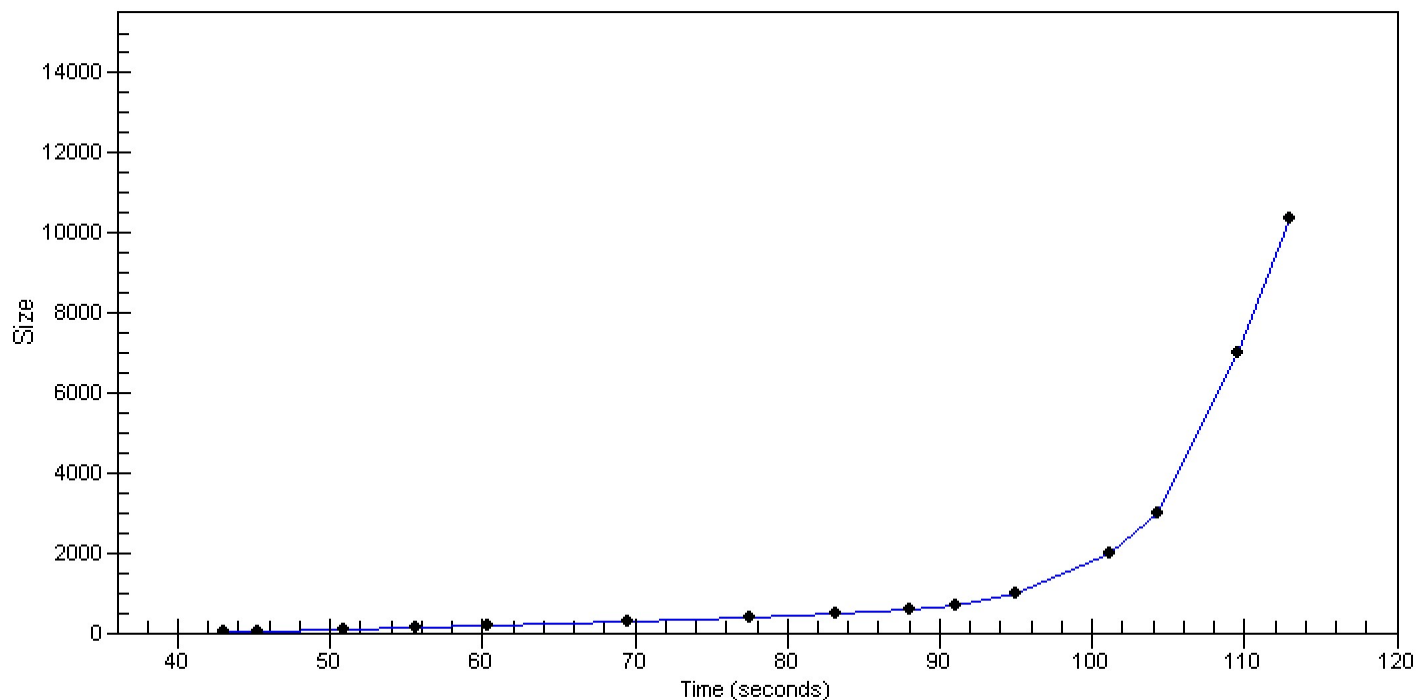


Assay Class: High Sensitivity DNA Assay
Data Path: C:\...ents and Settings\Bioanalyzer\2012-07-24\2012-07-24_001.xad

Created: 7/24/2012 9:15:28 AM
Modified: 7/24/2012 9:45:26 AM

Curves

Standard Curve



Assay Class: High Sensitivity DNA Assay
Data Path: C:\...ents and Settings\Bioanalyzer\2012-07-24\2012-07-24_001.xad

Created: 7/24/2012 9:15:28 AM
Modified: 7/24/2012 9:45:26 AM

Invalid Samples

Sample 8 has not been run, no results available.

Sample 9 has not been run, no results available.