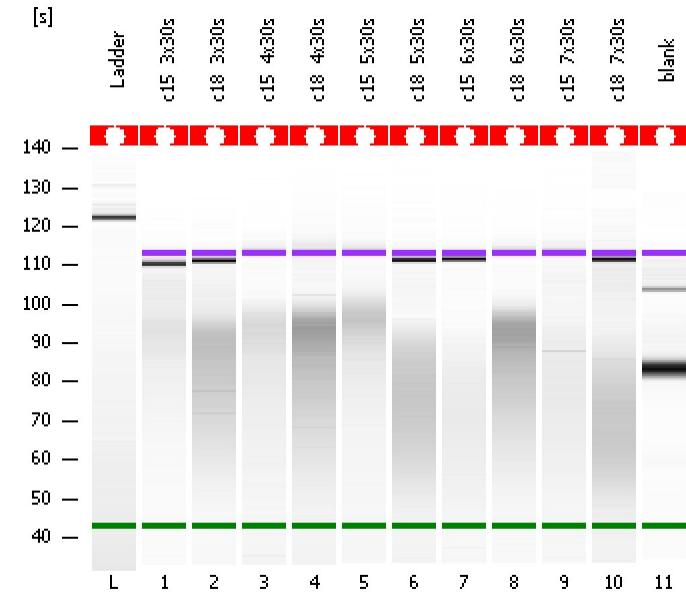


Assay Class: High Sensitivity DNA Assay
Data Path: C:\...ents and Settings\Bioanalyzer\2012-07-24\2012-07-24_002.xad

Created: 7/24/2012 10:11:13 AM
Modified: 7/24/2012 10:52:37 AM

Electrophoresis File Run Summary



Instrument Information:

Instrument Name: DE13701086 Firmware: C.01.069
Serial#: DE13701086 Type: G2938B

Assay Information:

Assay Origin Path: C:\Program Files\Agilent\2100 bioanalyzer\2100 expert\assays\dsDNA\High Sensitivity DNA.xsy
Assay Class: High Sensitivity DNA Assay
Version: 1.03
Assay Comments: Copyright © 2003-2010 Agilent Technologies

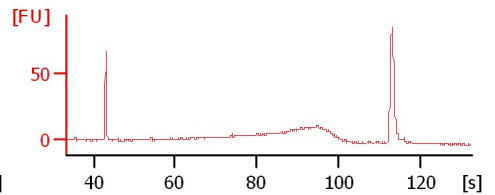
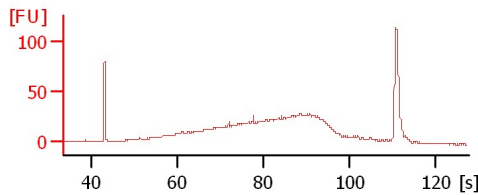
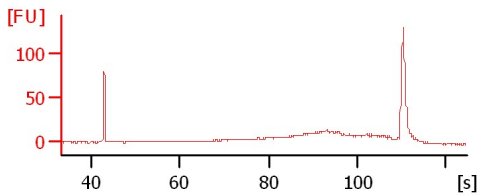
Chip Information:

Chip Lot #:
Reagent Kit Lot #:
Chip Comments:

c15_3x30s

c18_3x30s

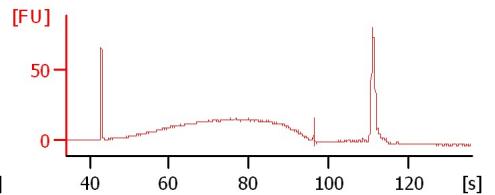
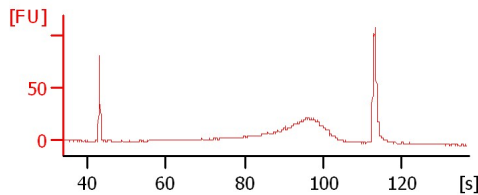
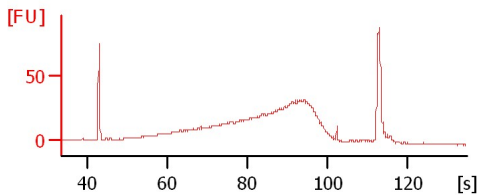
c15_4x30s



c18_4x30s

c15_5x30s

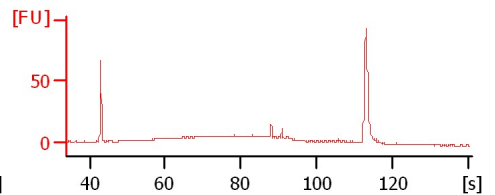
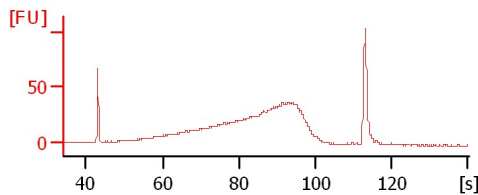
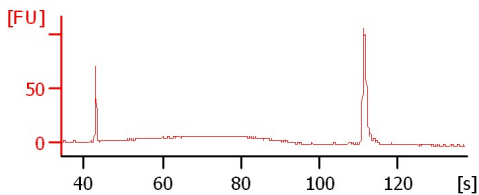
c18_5x30s



c15_6x30s

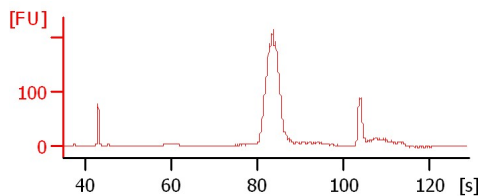
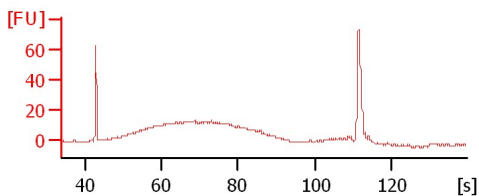
c18_6x30s

c15_7x30s



c18_7x30s

blank



Assay Class: High Sensitivity DNA Assay
 Data Path: C:\...ents and Settings\Bioanalyzer\2012-07-24\2012-07-24_002.xad

Created: 7/24/2012 10:11:13 AM
 Modified: 7/24/2012 10:52:37 AM

Electrophoresis File Run Summary (Chip Summary)

Sample Name	Sample Comment	Rest. Digest	Status	Observation	Result Label	Result Color
c15_3x30s		<input type="checkbox"/>	✓			
c18_3x30s		<input type="checkbox"/>	✓			
c15_4x30s		<input type="checkbox"/>	✓			
c18_4x30s		<input type="checkbox"/>	✓			
c15_5x30s		<input type="checkbox"/>	✓			
c18_5x30s		<input type="checkbox"/>	✓			
c15_6x30s		<input type="checkbox"/>	✓			
c18_6x30s		<input type="checkbox"/>	✓			
c15_7x30s		<input type="checkbox"/>	✓			
c18_7x30s		<input type="checkbox"/>	✓			
blank		<input type="checkbox"/>	✓			
Ladder		<input type="checkbox"/>	✓			

Chip Lot #

Reagent Kit Lot #

Chip Comments :

Assay Class: High Sensitivity DNA Assay
Data Path: C:\...ents and Settings\Bioanalyzer\2012-07-24\2012-07-24_002.xad

Created: 7/24/2012 10:11:13 AM
Modified: 7/24/2012 10:52:37 AM

Electrophoresis Assay Details

General Analysis Settings

Number of Available Sample and Ladder Wells (Max.) : 12
Minimum Visible Range [s] : 32
Maximum Visible Range [s] : 138
Start Analysis Time Range [s] : 33
End Analysis Time Range [s] : 137.5
Ladder Concentration [pg/μl] : 1950
Uses Standard Area for Ladder Fragments
Lower Marker Concentration [pg/μl] : 125
Upper Marker Concentration [pg/μl] : 75
Used Upper Marker for Quantitation
Standard Curve Fit is Point to Point
Show Data Aligned to Lower and Upper Marker

Integrator Settings

Integration Start Time [s] : 33.05
Integration End Time [s] : 137
Slope Threshold : 0.8
Height Threshold [FU] : 5
Area Threshold : 0.1
Width Threshold [s] : 0.6
Baseline Plateau [s] : 0.5

Filter Settings

Filter Width [s] : 0.5
Polynomial Order : 4

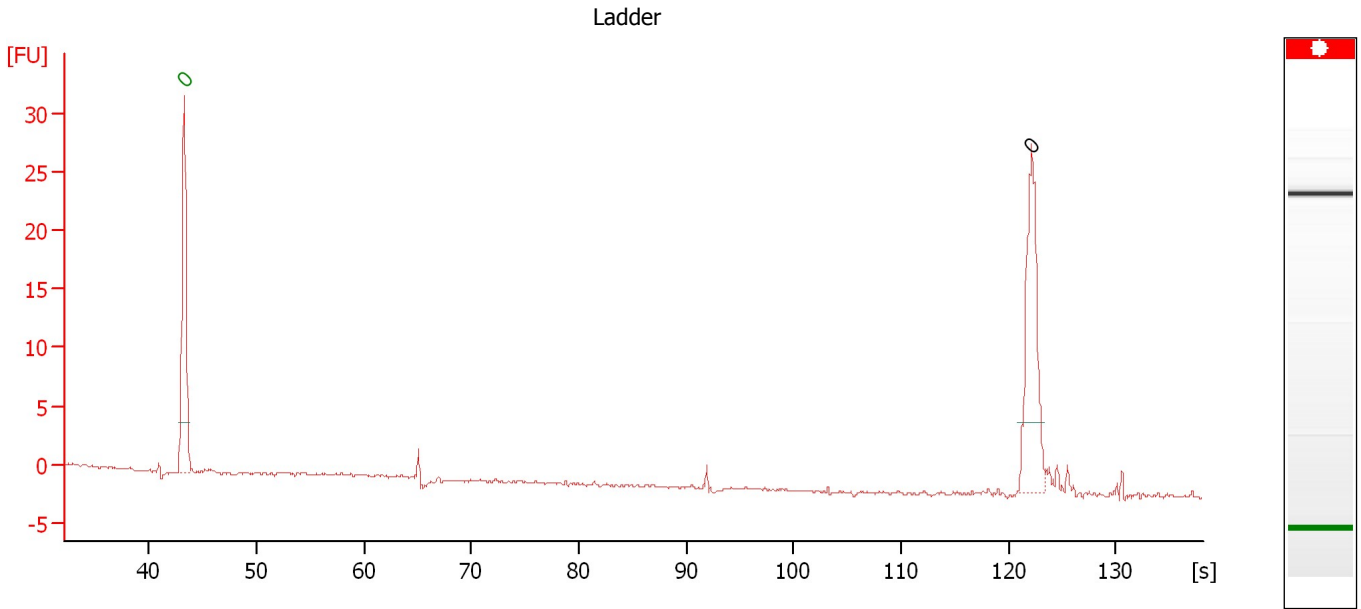
Ladder

Ladder Peak	Size	Area
1	35	160
2	50	210
3	100	208
4	150	221
5	200	242
6	300	270
7	400	305
8	500	306
9	600	336
10	700	321
11	1000	366
12	2000	413
13	3000	411
14	7000	400
15	10380	214

Assay Class: High Sensitivity DNA Assay
Data Path: C:\...ents and Settings\Bioanalyzer\2012-07-24\2012-07-24_002.xad

Created: 7/24/2012 10:11:13 AM
Modified: 7/24/2012 10:52:37 AM

Electropherogram Summary



Overall Results for Ladder

Noise: 0.1

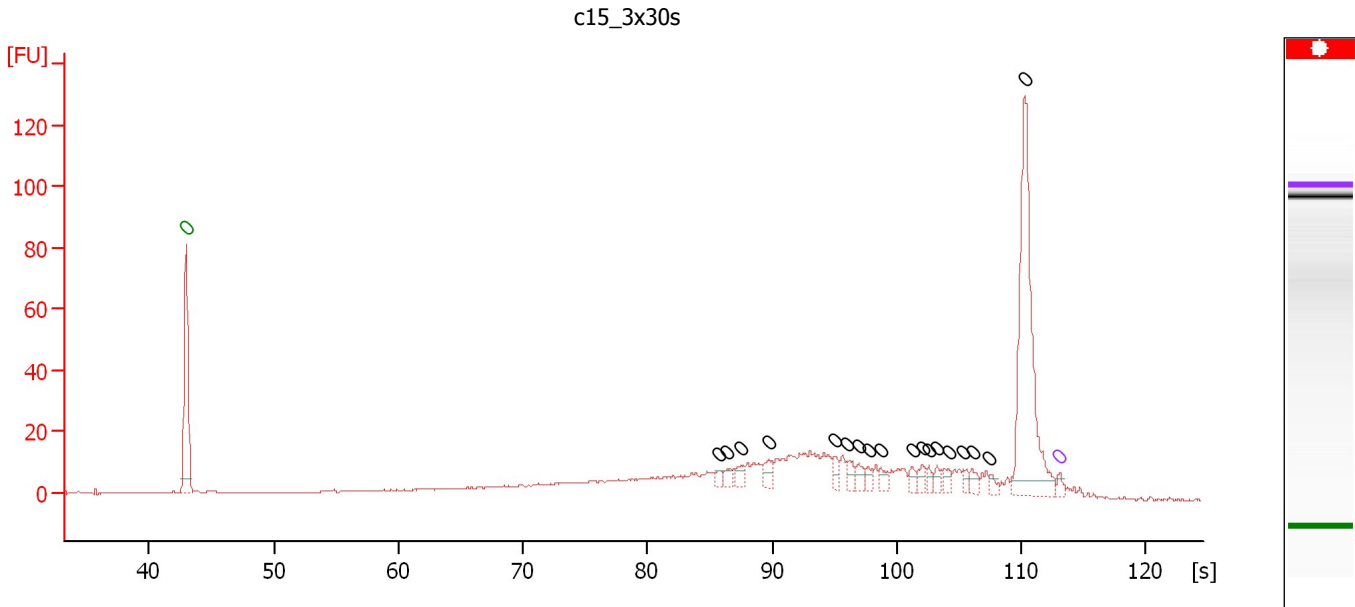
Peak table for Ladder

Peak	Size [bp]	Conc. [pg/μl]	Molarity [pmol/l]	Observations
1	0	0.00	0.0	Lower Marker
2	0	0.00	0.0	Ladder Peak

Assay Class: High Sensitivity DNA Assay
 Data Path: C:\...ents and Settings\Bioanalyzer\2012-07-24\2012-07-24_002.xad

Created: 7/24/2012 10:11:13 AM
 Modified: 7/24/2012 10:52:37 AM

Electropherogram Summary Continued ...



Overall Results for sample 1 : c15_3x30s

Number of peaks found: 18 Noise: 0.1

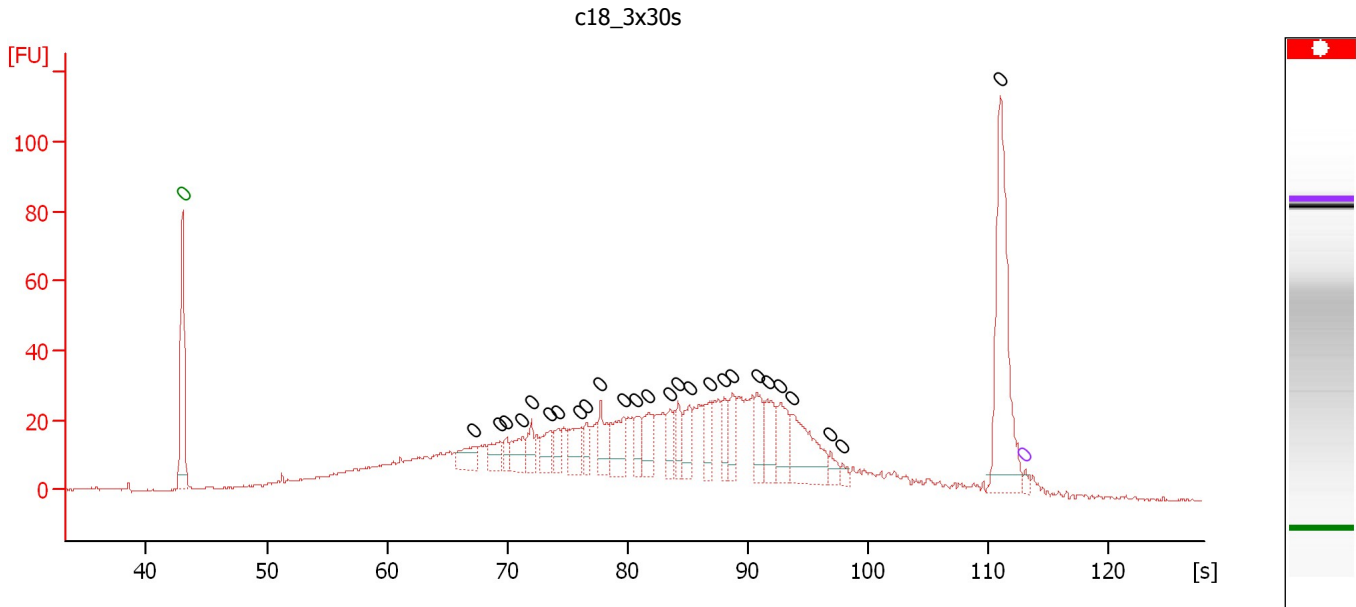
Peak table for sample 1 : c15_3x30s

Peak	Size [bp]	Conc. [pg/μl]	Molarity [pmol/l]	Observations
1	0	0.00	0.0	Lower Marker
2	0	0.00	0.0	
3	0	0.00	0.0	
4	0	0.00	0.0	
5	0	0.00	0.0	
6	0	0.00	0.0	
7	0	0.00	0.0	
8	0	0.00	0.0	
9	0	0.00	0.0	
10	0	0.00	0.0	
11	0	0.00	0.0	
12	0	0.00	0.0	
13	0	0.00	0.0	
14	0	0.00	0.0	
15	0	0.00	0.0	
16	0	0.00	0.0	
17	0	0.00	0.0	
18	0	0.00	0.0	
19	0	0.00	0.0	
20	0	0.00	0.0	Upper Marker

Assay Class: High Sensitivity DNA Assay
 Data Path: C:\...ents and Settings\Bioanalyzer\2012-07-24\2012-07-24_002.xad

Created: 7/24/2012 10:11:13 AM
 Modified: 7/24/2012 10:52:37 AM

Electropherogram Summary Continued ...



Overall Results for sample 2 : c18_3x30s

Number of peaks found: 26 Noise: 0.3

Peak table for sample 2 : c18_3x30s

Peak	Size [bp]	Conc. [pg/μl]	Molarity [pmol/l]	Observations
1	0	0.00	0.0	Lower Marker
2	0	0.00	0.0	
3	0	0.00	0.0	
4	0	0.00	0.0	
5	0	0.00	0.0	
6	0	0.00	0.0	
7	0	0.00	0.0	
8	0	0.00	0.0	
9	0	0.00	0.0	
10	0	0.00	0.0	
11	0	0.00	0.0	
12	0	0.00	0.0	
13	0	0.00	0.0	
14	0	0.00	0.0	
15	0	0.00	0.0	
16	0	0.00	0.0	
17	0	0.00	0.0	
18	0	0.00	0.0	
19	0	0.00	0.0	
20	0	0.00	0.0	
21	0	0.00	0.0	
22	0	0.00	0.0	
23	0	0.00	0.0	
24	0	0.00	0.0	
25	0	0.00	0.0	
26	0	0.00	0.0	
27	0	0.00	0.0	

Assay Class: High Sensitivity DNA Assay
Data Path: C:\...ents and Settings\Bioanalyzer\2012-07-24\2012-07-24_002.xad

Created: 7/24/2012 10:11:13 AM
Modified: 7/24/2012 10:52:37 AM

Electropherogram Summary Continued ...

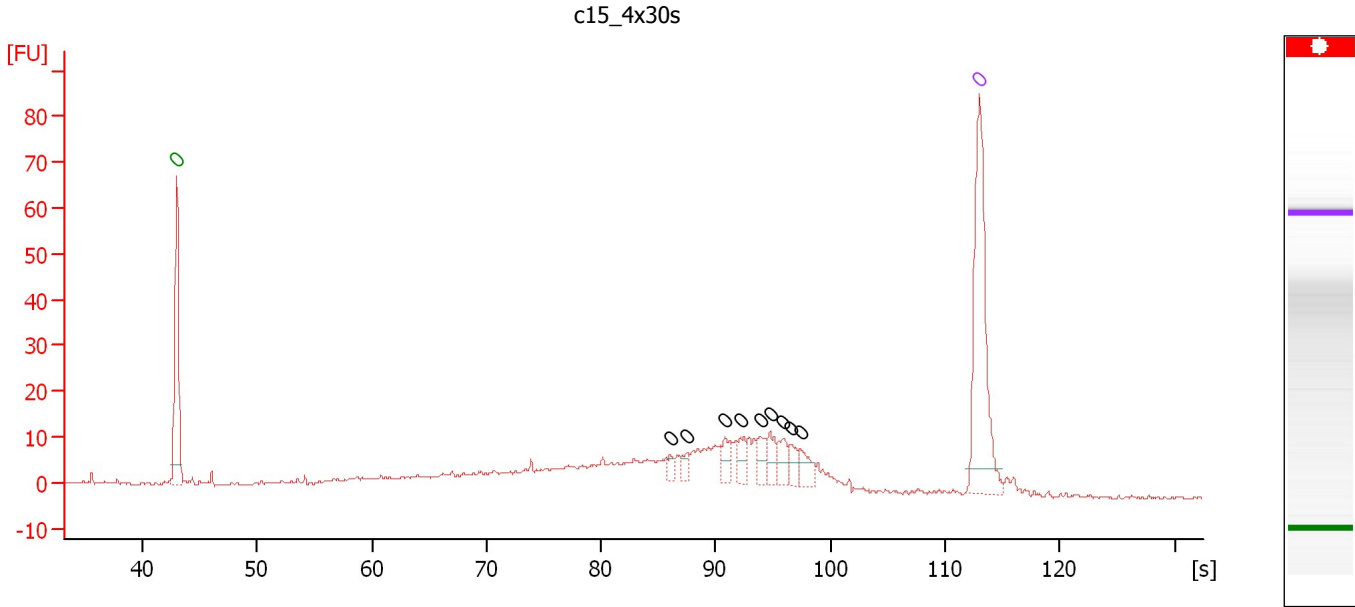
... Peak table for sample 2 : c18 3x30s

Peak	Size [bp]	Conc. [pg/μl]	Molarity [pmol/l]	Observations
28	0	0.00	0.0	Upper Marker

Assay Class: High Sensitivity DNA Assay
 Data Path: C:\...ents and Settings\Bioanalyzer\2012-07-24\2012-07-24_002.xad

Created: 7/24/2012 10:11:13 AM
 Modified: 7/24/2012 10:52:37 AM

Electropherogram Summary Continued ...



Overall Results for sample 3 : c15_4x30s

Number of peaks found: 9 Noise: 0.3

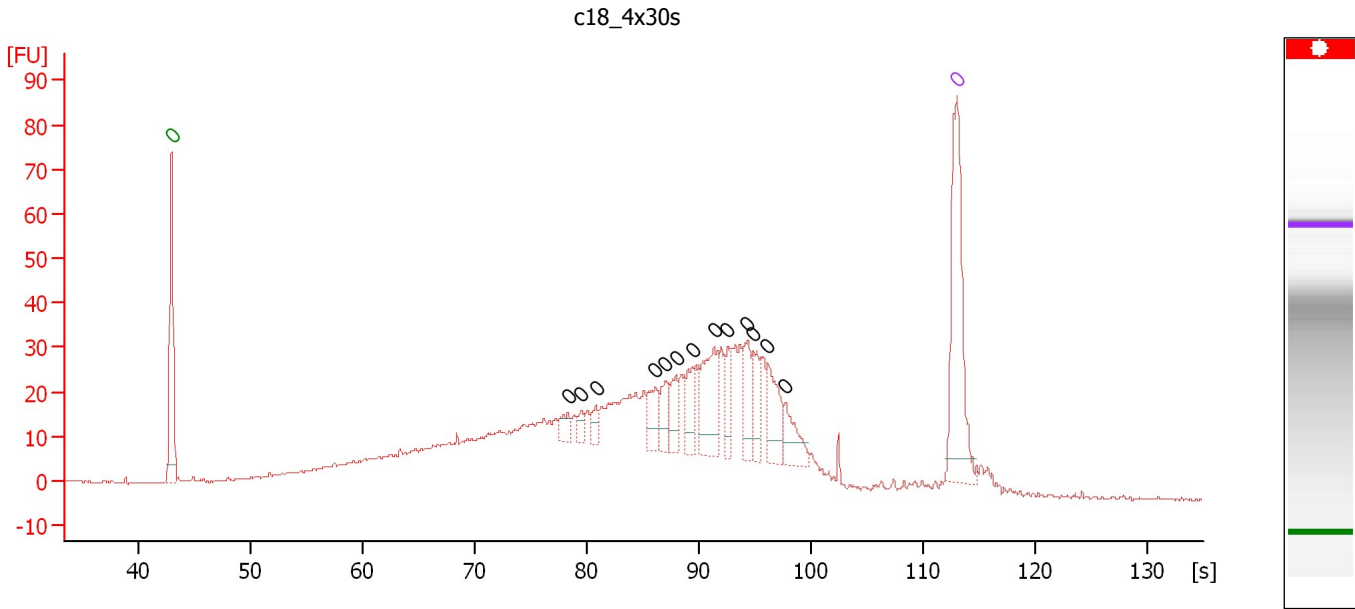
Peak table for sample 3 : c15_4x30s

Peak	Size [bp]	Conc. [pg/μl]	Molarity [pmol/l]	Observations
1	0	0.00	0.0	Lower Marker
2	0	0.00	0.0	
3	0	0.00	0.0	
4	0	0.00	0.0	
5	0	0.00	0.0	
6	0	0.00	0.0	
7	0	0.00	0.0	
8	0	0.00	0.0	
9	0	0.00	0.0	
10	0	0.00	0.0	
11	0	0.00	0.0	Upper Marker

Assay Class: High Sensitivity DNA Assay
 Data Path: C:\...ents and Settings\Bioanalyzer\2012-07-24\2012-07-24_002.xad

Created: 7/24/2012 10:11:13 AM
 Modified: 7/24/2012 10:52:37 AM

Electropherogram Summary Continued ...



Overall Results for sample 4 : c18 4x30s

Number of peaks found: 13 Noise: 0.2

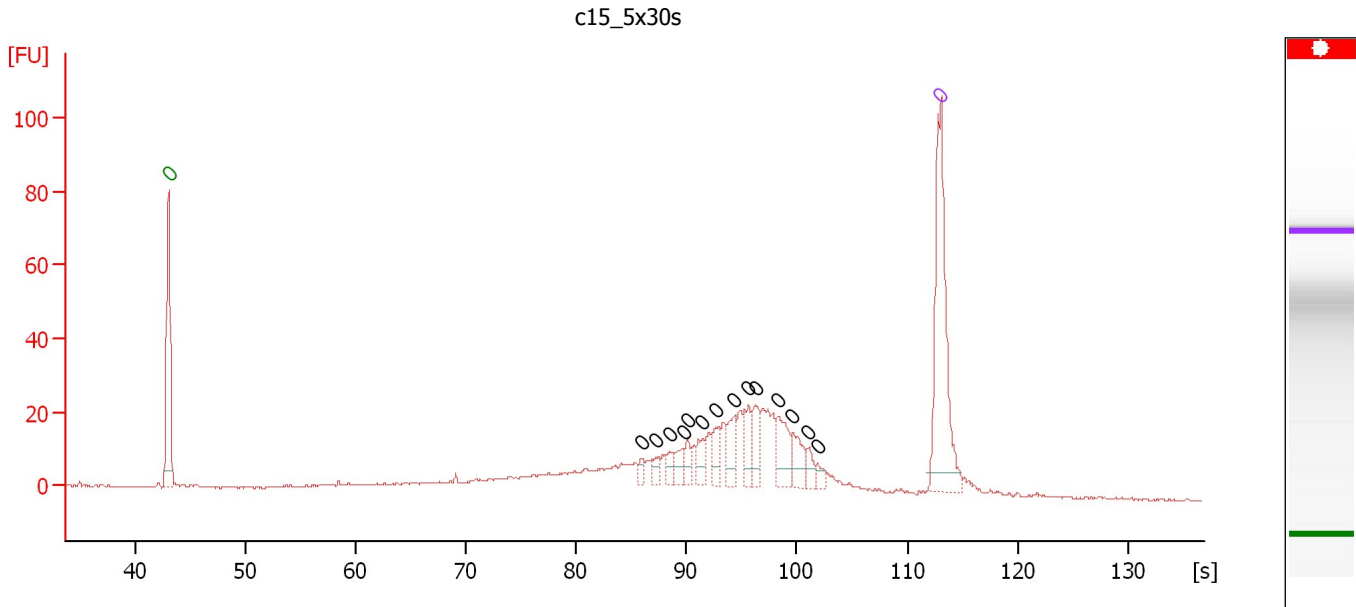
Peak table for sample 4 : c18 4x30s

Peak	Size [bp]	Conc. [pg/μl]	Molarity [pmol/l]	Observations
1	0	0.00	0.0	Lower Marker
2	0	0.00	0.0	
3	0	0.00	0.0	
4	0	0.00	0.0	
5	0	0.00	0.0	
6	0	0.00	0.0	
7	0	0.00	0.0	
8	0	0.00	0.0	
9	0	0.00	0.0	
10	0	0.00	0.0	
11	0	0.00	0.0	
12	0	0.00	0.0	
13	0	0.00	0.0	
14	0	0.00	0.0	
15	0	0.00	0.0	Upper Marker

Assay Class: High Sensitivity DNA Assay
 Data Path: C:\...ents and Settings\Bioanalyzer\2012-07-24\2012-07-24_002.xad

Created: 7/24/2012 10:11:13 AM
 Modified: 7/24/2012 10:52:37 AM

Electropherogram Summary Continued ...



Overall Results for sample 5 : c15_5x30s

Number of peaks found: 14 Noise: 0.2

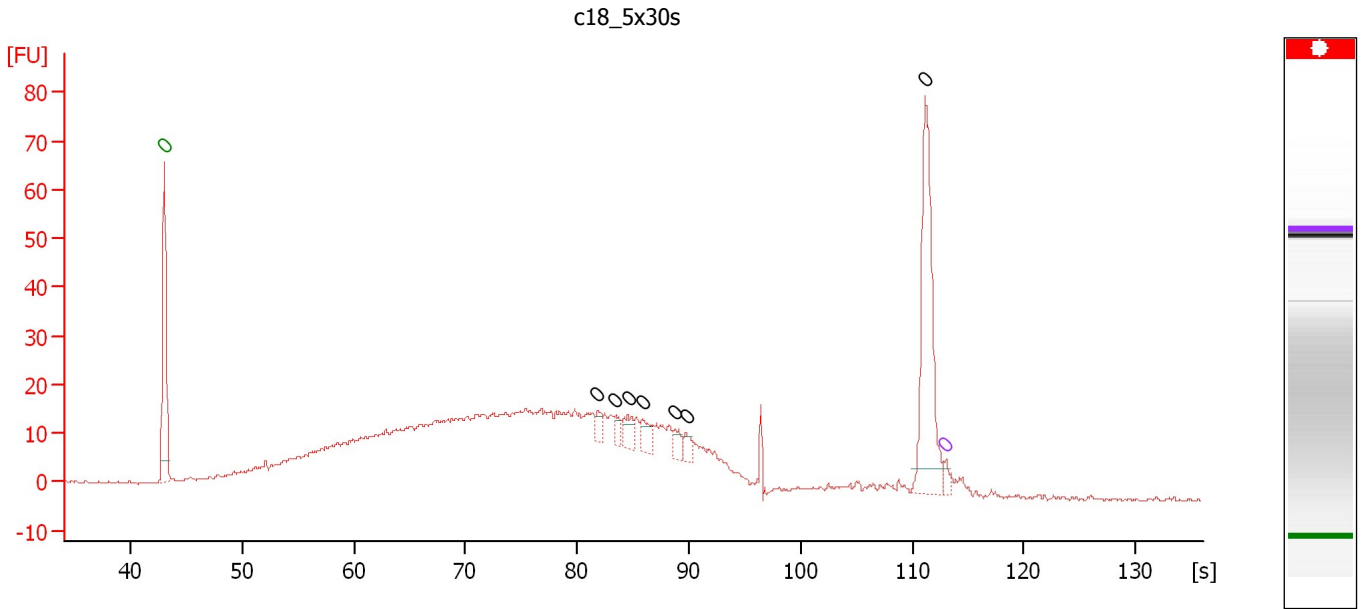
Peak table for sample 5 : c15_5x30s

Peak	Size [bp]	Conc. [pg/μl]	Molarity [pmol/l]	Observations
1	0	0.00	0.0	Lower Marker
2	0	0.00	0.0	
3	0	0.00	0.0	
4	0	0.00	0.0	
5	0	0.00	0.0	
6	0	0.00	0.0	
7	0	0.00	0.0	
8	0	0.00	0.0	
9	0	0.00	0.0	
10	0	0.00	0.0	
11	0	0.00	0.0	
12	0	0.00	0.0	
13	0	0.00	0.0	
14	0	0.00	0.0	
15	0	0.00	0.0	
16	0	0.00	0.0	Upper Marker

Assay Class: High Sensitivity DNA Assay
 Data Path: C:\...ents and Settings\Bioanalyzer\2012-07-24\2012-07-24_002.xad

Created: 7/24/2012 10:11:13 AM
 Modified: 7/24/2012 10:52:37 AM

Electropherogram Summary Continued ...



Overall Results for sample 6 : c18_5x30s

Number of peaks found: 7 Noise: 0.2

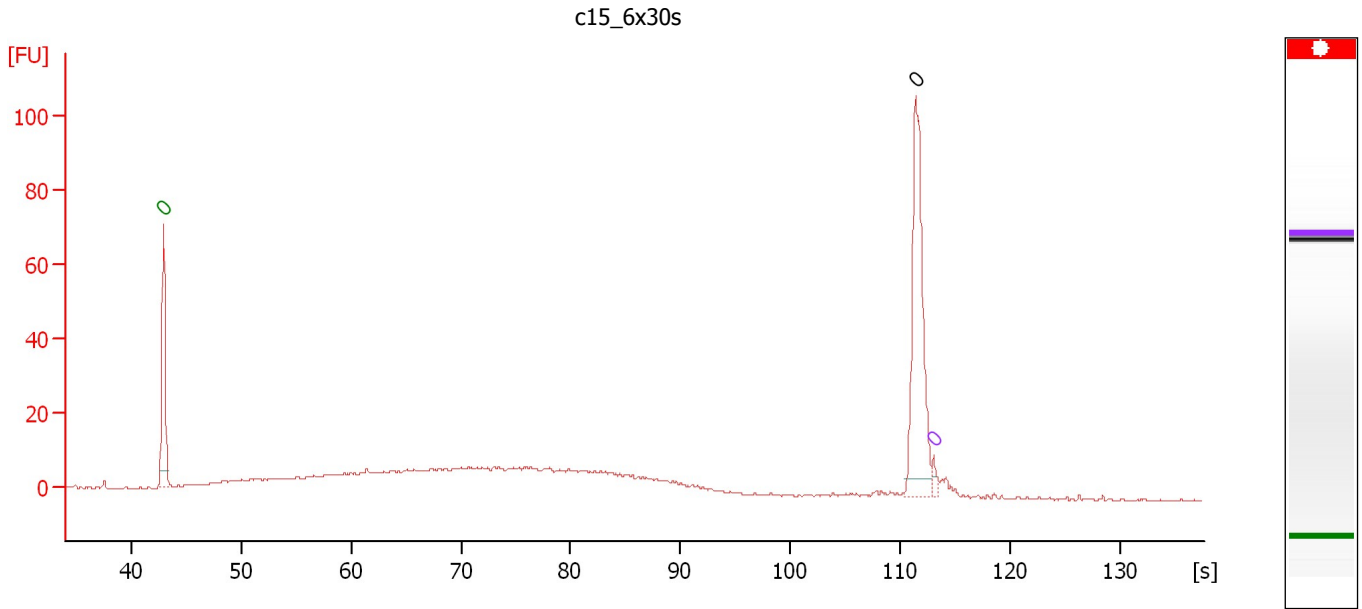
Peak table for sample 6 : c18_5x30s

Peak	Size [bp]	Conc. [pg/μl]	Molarity [pmol/l]	Observations
1	0	0.00	0.0	Lower Marker
2	0	0.00	0.0	
3	0	0.00	0.0	
4	0	0.00	0.0	
5	0	0.00	0.0	
6	0	0.00	0.0	
7	0	0.00	0.0	
8	0	0.00	0.0	
9	0	0.00	0.0	Upper Marker

Assay Class: High Sensitivity DNA Assay
Data Path: C:\...ents and Settings\Bioanalyzer\2012-07-24\2012-07-24_002.xad

Created: 7/24/2012 10:11:13 AM
Modified: 7/24/2012 10:52:37 AM

Electropherogram Summary Continued ...



Overall Results for sample 7 : c15_6x30s

Number of peaks found: 1 Noise: 0.2

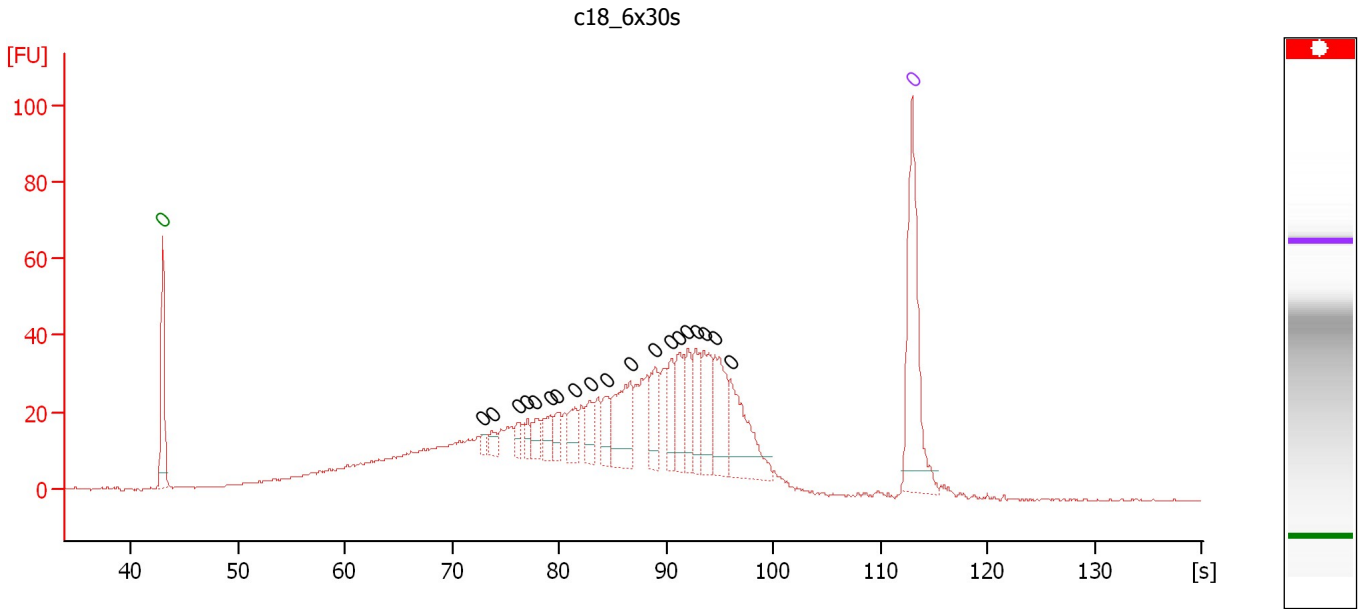
Peak table for sample 7 : c15_6x30s

Peak	Size [bp]	Conc. [pg/μl]	Molarity [pmol/l]	Observations
1	0	0.00	0.0	Lower Marker
2	0	0.00	0.0	
3	0	0.00	0.0	Upper Marker

Assay Class: High Sensitivity DNA Assay
 Data Path: C:\...ents and Settings\Bioanalyzer\2012-07-24\2012-07-24_002.xad

Created: 7/24/2012 10:11:13 AM
 Modified: 7/24/2012 10:52:37 AM

Electropherogram Summary Continued ...



Overall Results for sample 8 : c18_6x30s

Number of peaks found: 19 Noise: 0.2

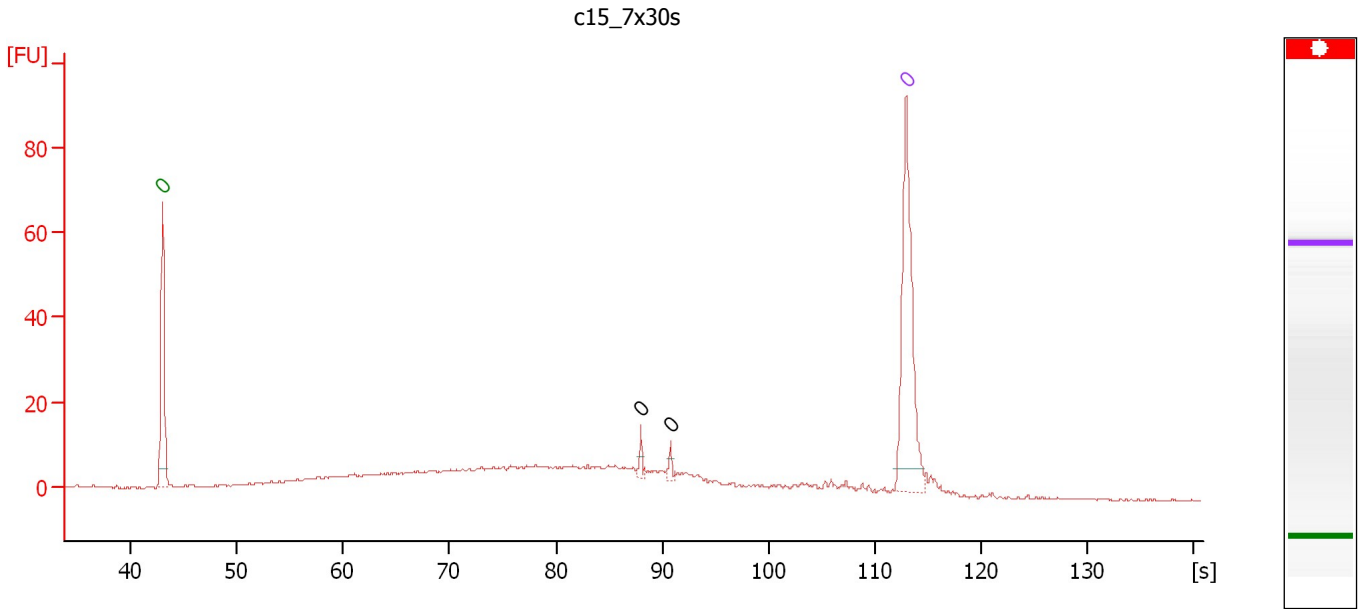
Peak table for sample 8 : c18_6x30s

Peak	Size [bp]	Conc. [pg/µl]	Molarity [pmol/l]	Observations
1	0	0.00	0.0	Lower Marker
2	0	0.00	0.0	
3	0	0.00	0.0	
4	0	0.00	0.0	
5	0	0.00	0.0	
6	0	0.00	0.0	
7	0	0.00	0.0	
8	0	0.00	0.0	
9	0	0.00	0.0	
10	0	0.00	0.0	
11	0	0.00	0.0	
12	0	0.00	0.0	
13	0	0.00	0.0	
14	0	0.00	0.0	
15	0	0.00	0.0	
16	0	0.00	0.0	
17	0	0.00	0.0	
18	0	0.00	0.0	
19	0	0.00	0.0	
20	0	0.00	0.0	
21	0	0.00	0.0	Upper Marker

Assay Class: High Sensitivity DNA Assay
 Data Path: C:\...ents and Settings\Bioanalyzer\2012-07-24\2012-07-24_002.xad

Created: 7/24/2012 10:11:13 AM
 Modified: 7/24/2012 10:52:37 AM

Electropherogram Summary Continued ...



Overall Results for sample 9 : c15_7x30s

Number of peaks found: 2 Noise: 0.2

Peak table for sample 9 : c15_7x30s

Peak	Size [bp]	Conc. [pg/μl]	Molarity [pmol/l]	Observations
1	0	0.00	0.0	Lower Marker
2	0	0.00	0.0	
3	0	0.00	0.0	
4	0	0.00	0.0	Upper Marker

Assay Class: High Sensitivity DNA Assay
Data Path: C:\...ents and Settings\Bioanalyzer\2012-07-24\2012-07-24_002.xad

Created: 7/24/2012 10:11:13 AM
Modified: 7/24/2012 10:52:37 AM

Gel Image

