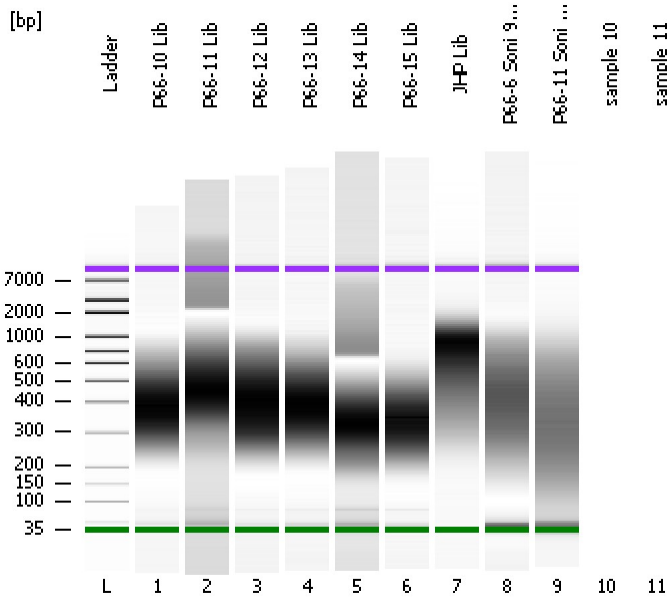


Assay Class: High Sensitivity DNA Assay
Data Path: C:\...ents and Settings\Bioanalyzer\2012-07-24\2012-07-24_004.xad

Created: 7/24/2012 4:42:55 PM
Modified: 7/24/2012 5:20:41 PM

Electrophoresis File Run Summary



Instrument Information:

Instrument Name: DE13701086 Firmware: C.01.069
Serial#: DE13701086 Type: G2938B

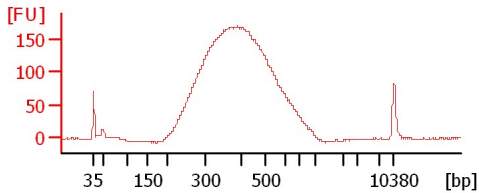
Assay Information:

Assay Origin Path: C:\Program Files\Agilent\2100 bioanalyzer\2100 expert\assays\dsDNA\High Sensitivity DNA.xsy
Assay Class: High Sensitivity DNA Assay
Version: 1.03
Assay Comments: Copyright © 2003-2010 Agilent Technologies

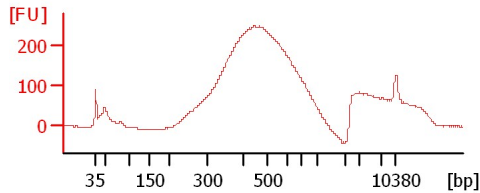
Chip Information:

Chip Lot #:
Reagent Kit Lot #:
Chip Comments:

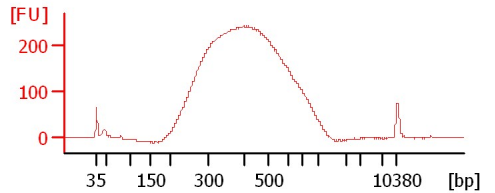
P66-10 Lib



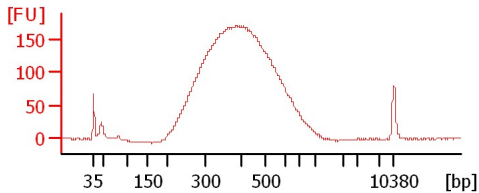
P66-11 Lib



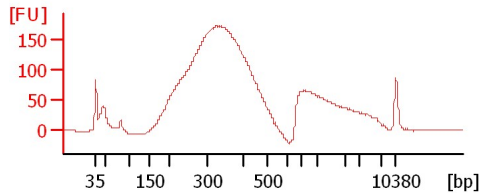
P66-12 Lib



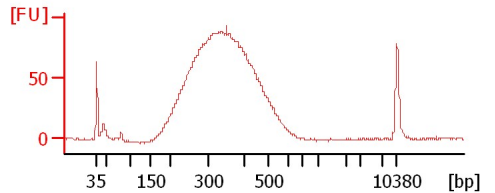
P66-13 Lib



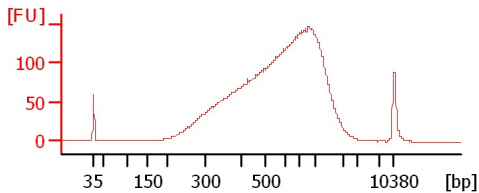
P66-14 Lib



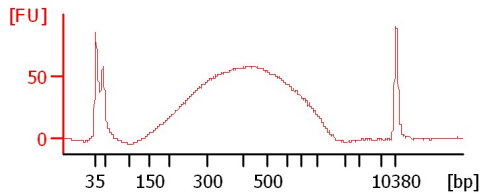
P66-15 Lib



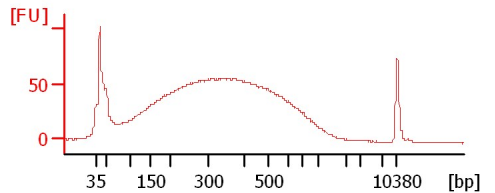
JHP Lib



P66-6 Soni 9+2Cycles 1:14



P66-11 Soni 9+4Cycles 1:12



Assay Class: High Sensitivity DNA Assay
 Data Path: C:\...ents and Settings\Bioanalyzer\2012-07-24\2012-07-24_004.xad

Created: 7/24/2012 4:42:55 PM
 Modified: 7/24/2012 5:20:41 PM

Electrophoresis File Run Summary (Chip Summary)

Sample Name	Sample Comment	Rest. Digest	Status	Observation	Result Label	Result Color
P66-10 Lib		<input type="checkbox"/>	✓			
P66-11 Lib		<input type="checkbox"/>	✓			
P66-12 Lib		<input type="checkbox"/>	✓			
P66-13 Lib		<input type="checkbox"/>	✓			
P66-14 Lib		<input type="checkbox"/>	✓			
P66-15 Lib		<input type="checkbox"/>	✓			
JHP Lib		<input type="checkbox"/>	✓			
P66-6 Soni 9+2Cycles 1:14		<input type="checkbox"/>	✓			
P66-11 Soni 9+4Cycles 1:12		<input type="checkbox"/>	✓			
sample 10		<input type="checkbox"/>				
sample 11		<input type="checkbox"/>				
Ladder		<input type="checkbox"/>	✓			

Chip Lot #

Reagent Kit Lot #

Chip Comments :

Assay Class: High Sensitivity DNA Assay
Data Path: C:\...ents and Settings\Bioanalyzer\2012-07-24\2012-07-24_004.xad

Created: 7/24/2012 4:42:55 PM
Modified: 7/24/2012 5:20:41 PM

Electrophoresis Assay Details

General Analysis Settings

Number of Available Sample and Ladder Wells (Max.) : 12
Minimum Visible Range [s] : 32
Maximum Visible Range [s] : 138
Start Analysis Time Range [s] : 33
End Analysis Time Range [s] : 137.5
Ladder Concentration [pg/μl] : 1950
Uses Standard Area for Ladder Fragments
Lower Marker Concentration [pg/μl] : 125
Upper Marker Concentration [pg/μl] : 75
Used Upper Marker for Quantitation
Standard Curve Fit is Point to Point
Show Data Aligned to Lower and Upper Marker

Integrator Settings

Integration Start Time [s] : 33.05
Integration End Time [s] : 137
Slope Threshold : 0.8
Height Threshold [FU] : 5
Area Threshold : 0.1
Width Threshold [s] : 0.6
Baseline Plateau [s] : 0.5

Filter Settings

Filter Width [s] : 0.5
Polynomial Order : 4

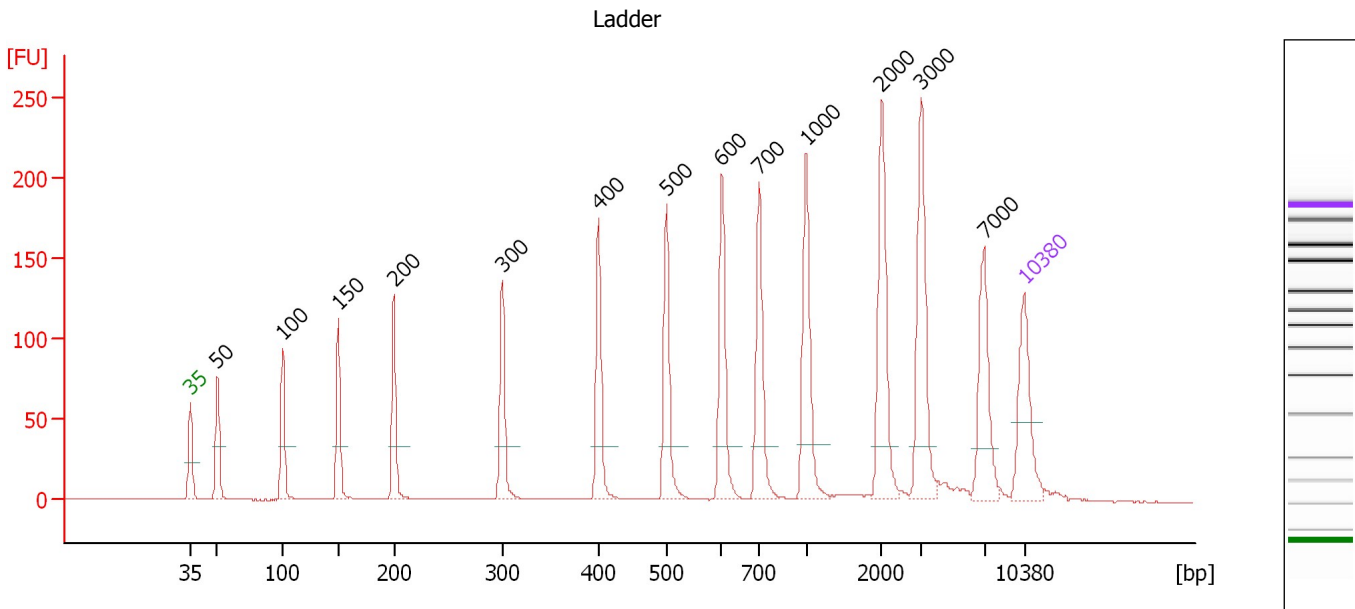
Ladder

Ladder Peak	Size	Area
1	35	160
2	50	210
3	100	208
4	150	221
5	200	242
6	300	270
7	400	305
8	500	306
9	600	336
10	700	321
11	1000	366
12	2000	413
13	3000	411
14	7000	400
15	10380	214

Assay Class: High Sensitivity DNA Assay
 Data Path: C:\...ents and Settings\Bioanalyzer\2012-07-24\2012-07-24_004.xad

Created: 7/24/2012 4:42:55 PM
 Modified: 7/24/2012 5:20:41 PM

Electropherogram Summary



Overall Results for Ladder

Noise: 0.1

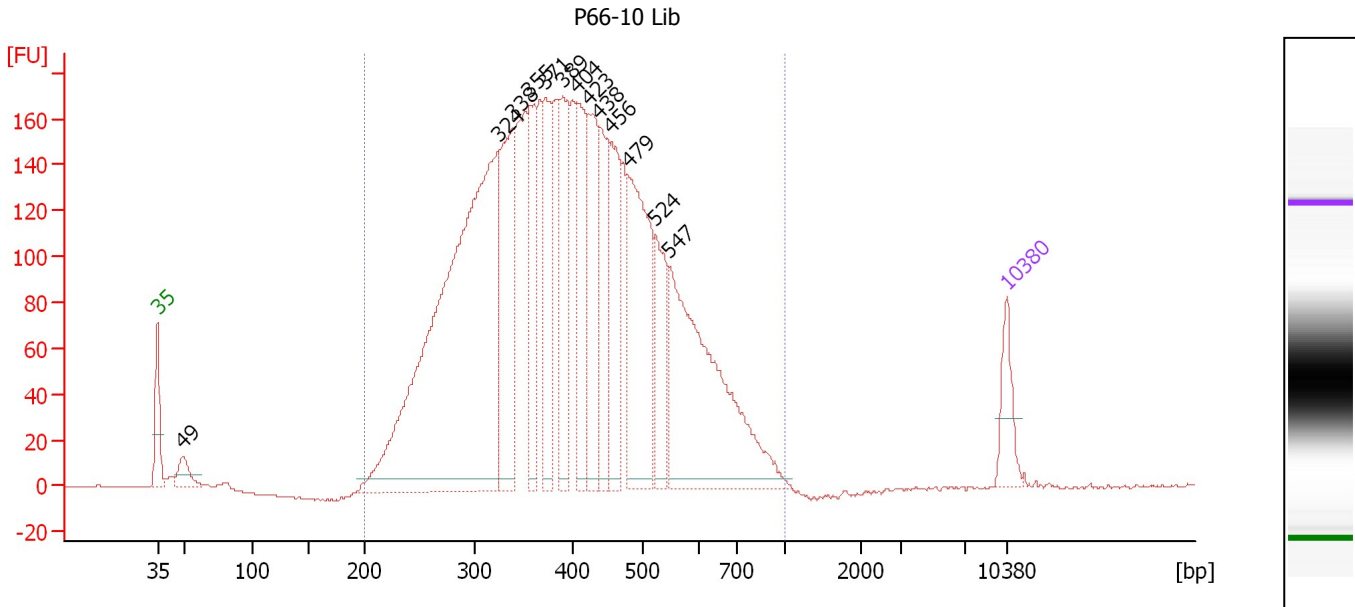
Peak table for Ladder

Peak	Size [bp]	Conc. [pg/μl]	Molarity [pmol/l]	Observations
1	35	125.00	5,411.3	Lower Marker
2	50	150.00	4,545.5	Ladder Peak
3	100	150.00	2,272.7	Ladder Peak
4	150	150.00	1,515.2	Ladder Peak
5	200	150.00	1,136.4	Ladder Peak
6	300	150.00	757.6	Ladder Peak
7	400	150.00	568.2	Ladder Peak
8	500	150.00	454.5	Ladder Peak
9	600	150.00	378.8	Ladder Peak
10	700	150.00	324.7	Ladder Peak
11	1,000	150.00	227.3	Ladder Peak
12	2,000	150.00	113.6	Ladder Peak
13	3,000	150.00	75.8	Ladder Peak
14	7,000	150.00	32.5	Ladder Peak
15	10,380	75.00	10.9	Upper Marker

Assay Class: High Sensitivity DNA Assay
 Data Path: C:\...ents and Settings\Bioanalyzer\2012-07-24\2012-07-24_004.xad

Created: 7/24/2012 4:42:55 PM
 Modified: 7/24/2012 5:20:41 PM

Electropherogram Summary Continued ...



Overall Results for sample 1 : P66-10 Lib

Number of peaks found: 13 Corr. Area 1: 4,498.1
 Noise: 0.2

Peak table for sample 1 : P66-10 Lib

Peak	Size [bp]	Conc. [pg/μl]	Molarity [pmol/l]	Observations
1	35	125.00	5,411.3	Lower Marker
2	49	68.78	2,130.4	
3	324	1,888.55	8,827.9	
4	338	421.63	1,891.3	
5	355	261.49	1,114.8	
6	371	271.76	1,108.9	
7	389	261.83	1,020.0	
8	404	307.95	1,153.5	
9	423	281.31	1,007.3	
10	438	251.98	872.2	
11	456	238.25	792.4	
12	479	490.57	1,551.6	
13	524	197.58	571.5	
14	547	733.95	2,034.4	
15	10,380	75.00	10.9	Upper Marker

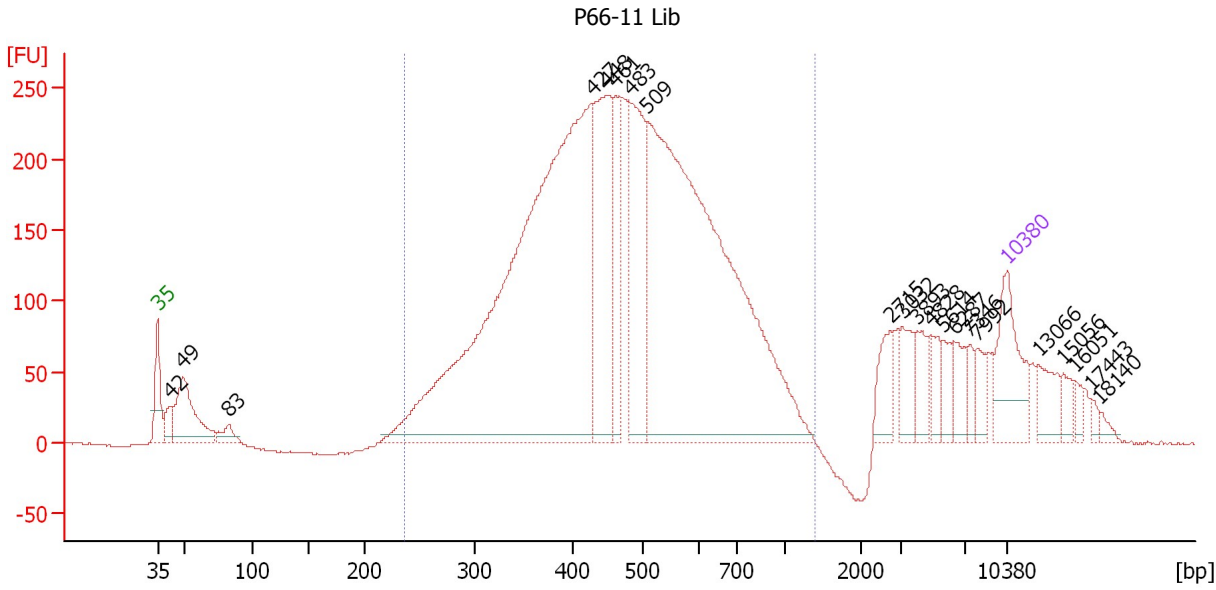
Region table for sample 1 : P66-10 Lib

From [bp]	To [bp]	Average Size [bp]	Molarity [pmol/l]	Conc. [pg/μl]	Corr. Area	% of Total	Size distribution in CV [%]	Color
200	1,000	413	27,454.6	6,712.07	4,498.1	99	28.8	Blue

Assay Class: High Sensitivity DNA Assay
 Data Path: C:\...ents and Settings\Bioanalyzer\2012-07-24\2012-07-24_004.xad

Created: 7/24/2012 4:42:55 PM
 Modified: 7/24/2012 5:20:41 PM

Electropherogram Summary Continued ...



Overall Results for sample 2 : P66-11 Lib

Number of peaks found: 21 Corr. Area 1: 5,716.5
 Noise: 0.5

Peak table for sample 2 : P66-11 Lib

Peak	Size [bp]	Conc. [pg/μl]	Molarity [pmol/l]	Observations
1	35	125.00	5,411.3	Lower Marker
2	42	32.04	1,160.9	
3	49	131.00	4,081.1	
4	83	22.20	407.0	
5	427	1,160.21	4,117.4	
6	448	235.51	796.9	
7	461	102.44	336.8	
8	483	186.85	586.7	
9	509	993.13	2,953.5	
10	2,715	38.61	21.5	
11	3,032	36.91	18.4	
12	3,893	29.07	11.3	
13	4,828	22.74	7.1	
14	5,614	22.85	6.2	
15	6,287	24.38	5.9	
16	7,346	14.63	3.0	
17	7,992	18.98	3.6	
18	10,380	75.00	10.9	Upper Marker
19	13,066	0.00	0.0	
20	15,056	0.00	0.0	
21	16,051	0.00	0.0	
22	17,443	0.00	0.0	
23	18,140	0.00	0.0	

Assay Class: High Sensitivity DNA Assay
Data Path: C:\...ents and Settings\Bioanalyzer\2012-07-24\2012-07-24_004.xad

Created: 7/24/2012 4:42:55 PM
Modified: 7/24/2012 5:20:41 PM

Electropherogram Summary Continued ...

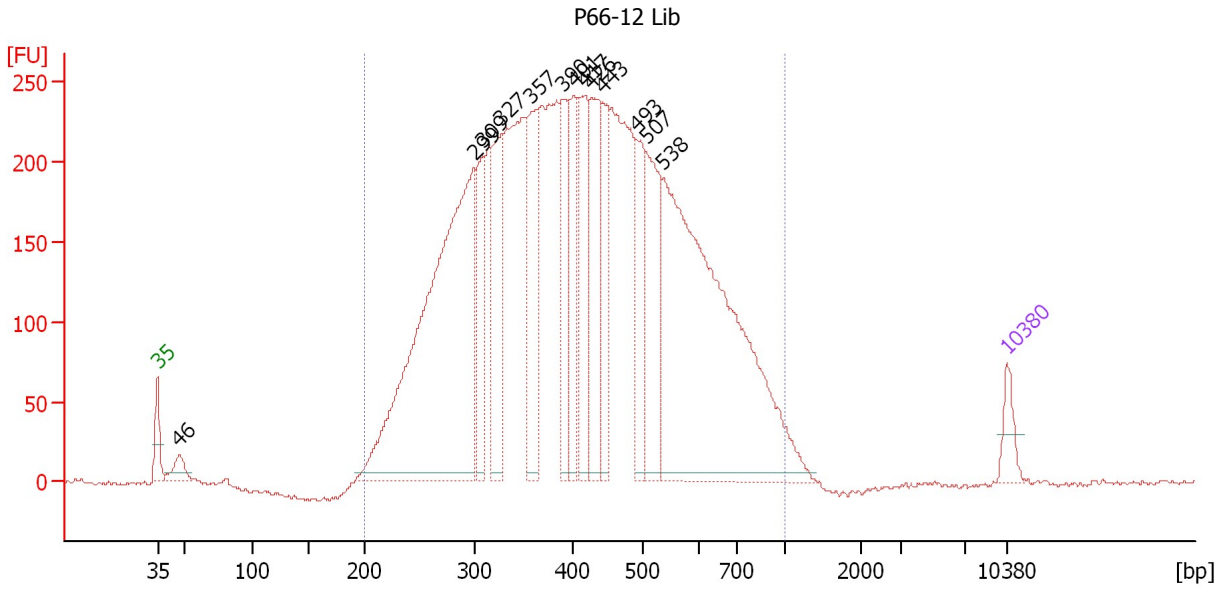
... Region table for sample 2 : P66-11 Lib

From [bp]	To [bp]	Average Size [bp]	Molarity [pmol/l]	Conc. [pg/μl]	Corr. Area	% of Total	Size distribution in CV [%]	Color
235	1,388	489	9,845.8	2,815.02	5,716.5	83	31.9	■

Assay Class: High Sensitivity DNA Assay
 Data Path: C:\...ents and Settings\Bioanalyzer\2012-07-24\2012-07-24_004.xad

Created: 7/24/2012 4:42:55 PM
 Modified: 7/24/2012 5:20:41 PM

Electropherogram Summary Continued ...



Overall Results for sample 3 : P66-12 Lib

Number of peaks found: 13 Corr. Area 1: 7,224.6
 Noise: 1.7

Peak table for sample 3 : P66-12 Lib

Peak	Size [bp]	Conc. [pg/μl]	Molarity [pmol/l]	Observations
1	35	125.00	5,411.3	Lower Marker
2	46	105.57	3,445.3	
3	299	2,510.04	12,723.9	
4	309	369.73	1,815.4	
5	327	539.18	2,498.5	
6	357	517.13	2,194.7	
7	390	391.31	1,519.7	
8	401	359.28	1,358.2	
9	417	431.40	1,569.2	
10	426	475.94	1,692.2	
11	443	366.01	1,252.5	
12	493	338.06	1,039.9	
13	507	505.94	1,512.2	
14	538	2,312.60	6,514.2	
15	10,380	75.00	10.9	Upper Marker

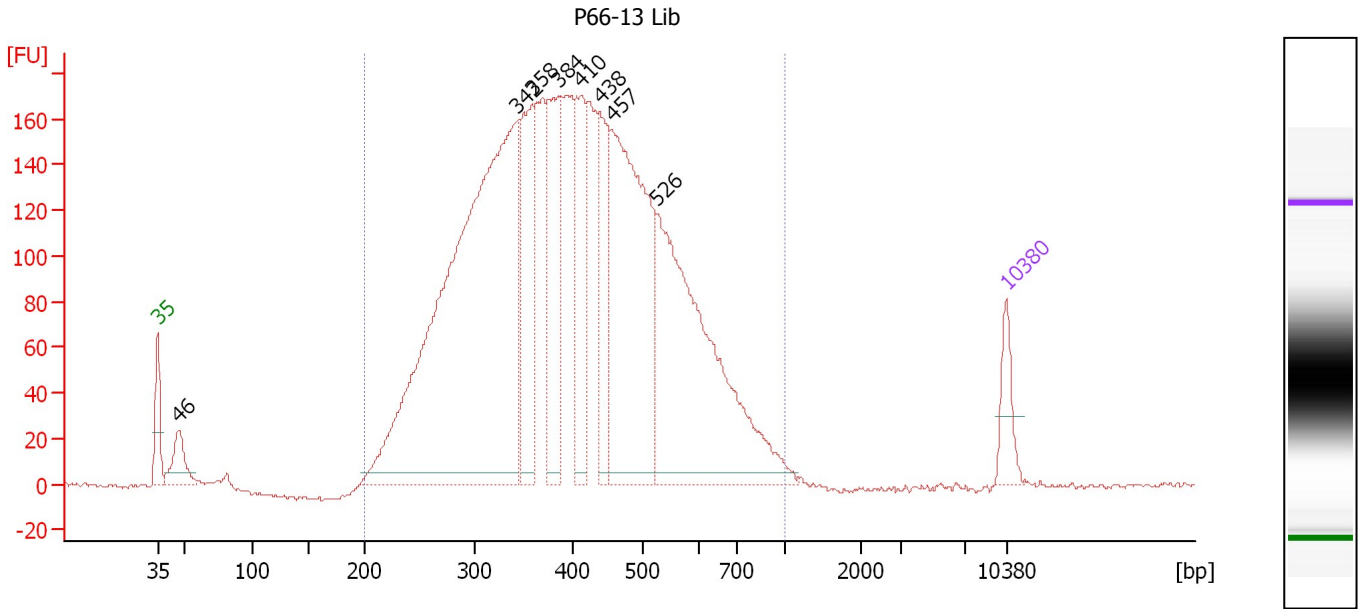
Region table for sample 3 : P66-12 Lib

From [bp]	To [bp]	Average Size [bp]	Molarity [pmol/l]	Conc. [pg/μl]	Corr. Area	% of Total	Size distribution in CV [%]	Color
200	1,000	434	50,047.7	12,450.67	7,224.6	99	33.1	Blue

Assay Class: High Sensitivity DNA Assay
 Data Path: C:\...ents and Settings\Bioanalyzer\2012-07-24\2012-07-24_004.xad

Created: 7/24/2012 4:42:55 PM
 Modified: 7/24/2012 5:20:41 PM

Electropherogram Summary Continued ...



Overall Results for sample 4 : P66-13 Lib

Number of peaks found: 8 Corr. Area 1: 4,499.8
 Noise: 1.1

Peak table for sample 4 : P66-13 Lib

Peak	Size [bp]	Conc. [pg/μl]	Molarity [pmol/l]	Observations
1	35	125.00	5,411.3	Lower Marker
2	46	134.55	4,403.0	
3	342	2,309.92	10,232.5	
4	358	416.85	1,766.0	
5	384	371.71	1,464.8	
6	410	324.65	1,200.0	
7	438	270.17	933.7	
8	457	965.66	3,201.0	
9	526	1,049.44	3,023.9	
10	10,380	75.00	10.9	Upper Marker

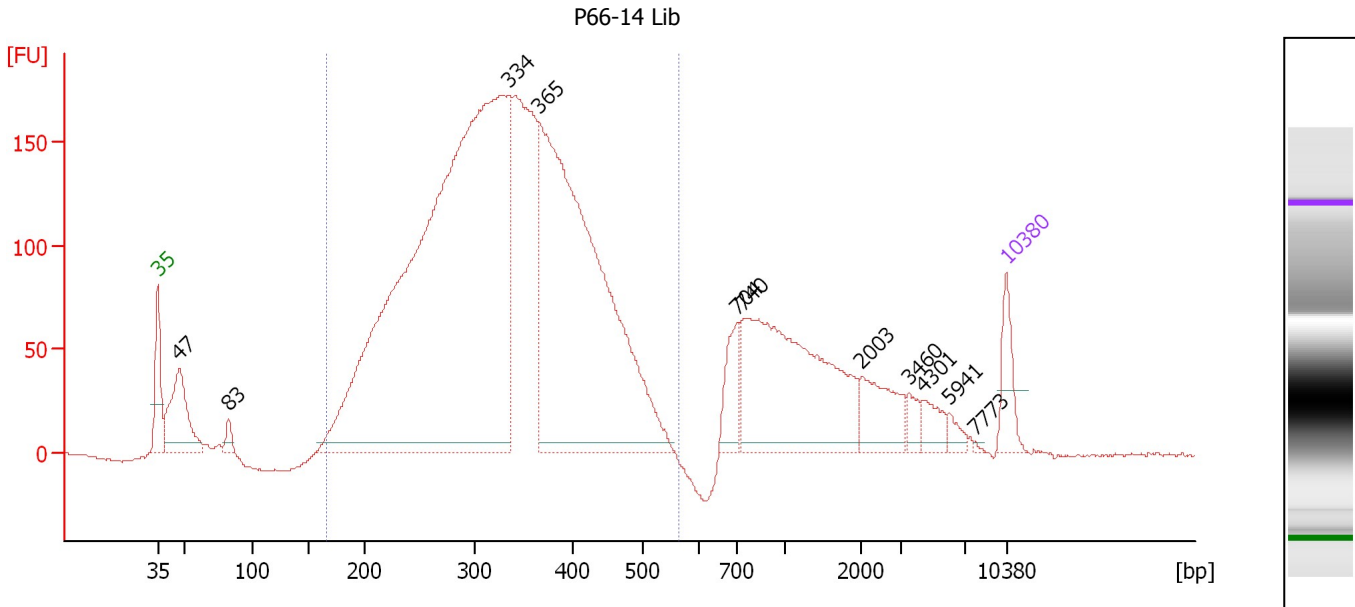
Region table for sample 4 : P66-13 Lib

From [bp]	To [bp]	Average Size [bp]	Molarity [pmol/l]	Conc. [pg/μl]	Corr. Area	% of Total	Size distribution in CV [%]	Color
200	1,000	417	28,055.4	6,906.50	4,499.8	98	29.5	Blue

Assay Class: High Sensitivity DNA Assay
 Data Path: C:\...ents and Settings\Bioanalyzer\2012-07-24\2012-07-24_004.xad

Created: 7/24/2012 4:42:55 PM
 Modified: 7/24/2012 5:20:41 PM

Electropherogram Summary Continued ...



Overall Results for sample 5 : P66-14 Lib

Number of peaks found: 11 Corr. Area 1: 3,930.3
 Noise: 0.7

Peak table for sample 5 : P66-14 Lib

Peak	Size [bp]	Conc. [pg/μl]	Molarity [pmol/l]	Observations
1	35	125.00	5,411.3	Lower Marker
2	47	317.57	10,280.4	
3	83	38.12	699.9	
4	334	3,290.54	14,919.6	
5	365	1,825.77	7,569.2	
6	704	115.47	248.4	
7	740	735.67	1,505.4	
8	2,003	124.49	94.2	
9	3,460	33.57	14.7	
10	4,301	44.60	15.7	
11	5,941	22.92	5.8	
12	7,773	2.26	0.4	
13	10,380	75.00	10.9	Upper Marker

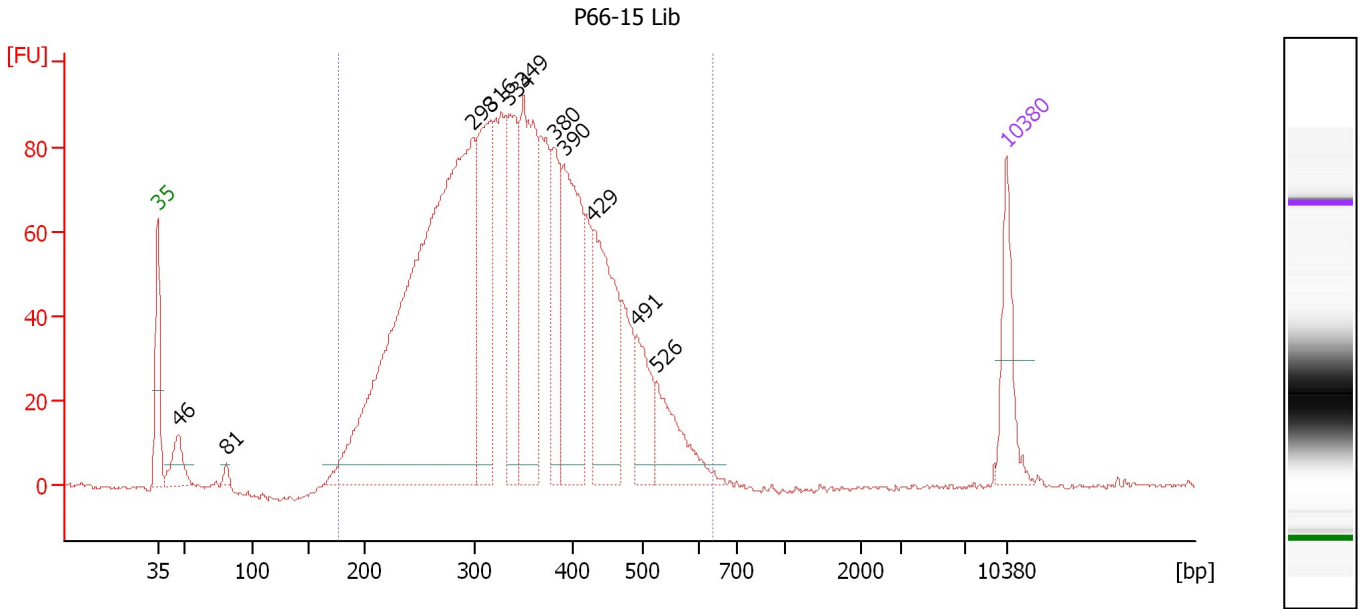
Region table for sample 5 : P66-14 Lib

From [bp]	To [bp]	Average Size [bp]	Molarity [pmol/l]	Conc. [pg/μl]	Corr. Area	% of Total	Size distribution in CV [%]	Color
166	565	331	31,326.2	6,310.41	3,930.3	79	23.0	Blue

Assay Class: High Sensitivity DNA Assay
 Data Path: C:\...ents and Settings\Bioanalyzer\2012-07-24\2012-07-24_004.xad

Created: 7/24/2012 4:42:55 PM
 Modified: 7/24/2012 5:20:41 PM

Electropherogram Summary Continued ...



Overall Results for sample 6 : P66-15 Lib

Number of peaks found: 11 Corr. Area 1: 2,175.7
 Noise: 0.5

Peak table for sample 6 : P66-15 Lib

Peak	Size [bp]	Conc. [pg/µl]	Molarity [pmol/l]	Observations
1	35	125.00	5,411.3	Lower Marker
2	46	68.65	2,252.5	
3	81	10.75	201.6	
4	298	1,323.74	6,735.9	
5	316	275.23	1,319.9	
6	334	218.36	989.4	
7	349	308.75	1,340.3	
8	380	126.36	503.5	
9	390	283.65	1,100.9	
10	429	249.16	880.2	
11	491	90.77	279.8	
12	526	110.43	318.0	
13	10,380	75.00	10.9	Upper Marker

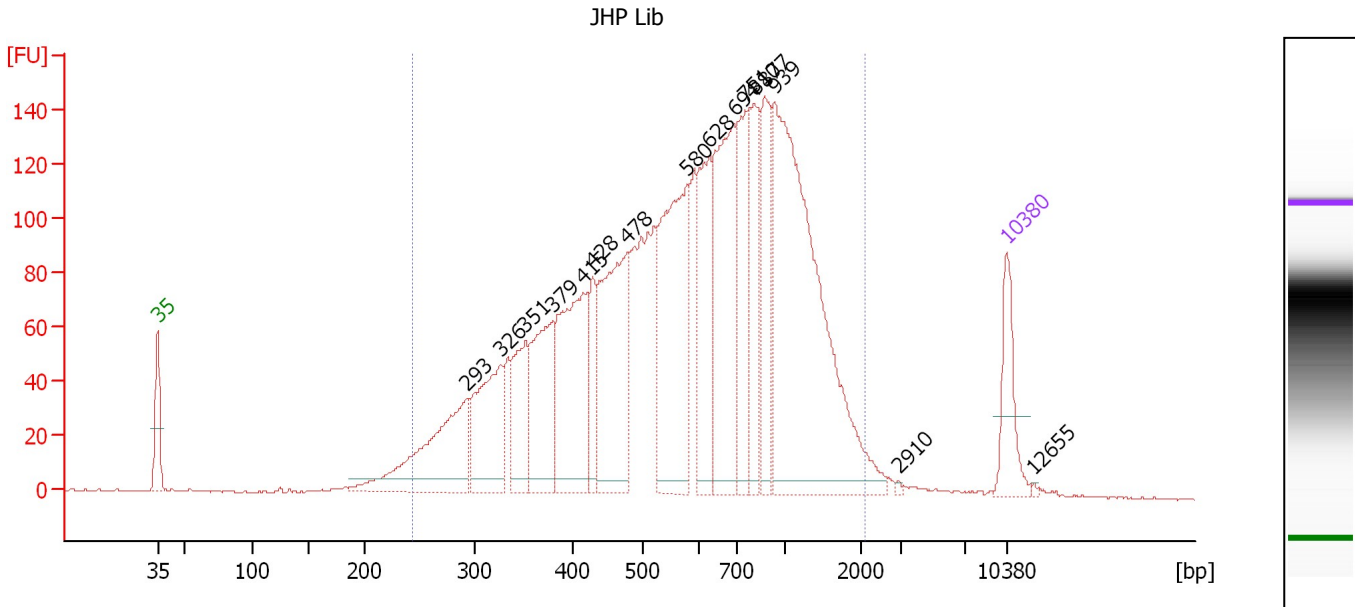
Region table for sample 6 : P66-15 Lib

From [bp]	To [bp]	Average Size [bp]	Molarity [pmol/l]	Conc. [pg/µl]	Corr. Area	% of Total	Size distribution in CV [%]	Color
176	636	347	17,453.3	3,661.27	2,175.7	98	24.8	Blue

Assay Class: High Sensitivity DNA Assay
 Data Path: C:\...ents and Settings\Bioanalyzer\2012-07-24\2012-07-24_004.xad

Created: 7/24/2012 4:42:55 PM
 Modified: 7/24/2012 5:20:41 PM

Electropherogram Summary Continued ...



Overall Results for sample 7 : JHP Lib

Number of peaks found: 16 Corr. Area 1: 3,491.8
 Noise: 0.3

Peak table for sample 7 : JHP Lib

Peak	Size [bp]	Conc. [pg/μl]	Molarity [pmol/l]	Observations
1	35	125.00	5,411.3	Lower Marker
2	293	281.93	1,459.1	
3	326	209.14	971.7	
4	351	135.93	586.0	
5	379	199.28	797.2	
6	415	294.27	1,074.7	
7	428	84.11	297.5	
8	478	329.66	1,044.7	
9	580	358.07	934.9	
10	628	179.20	432.3	
11	694	336.87	735.8	
12	751	157.09	316.8	
13	810	163.92	306.6	
14	877	151.37	261.6	
15	939	691.73	1,116.0	
16	2,910	2.64	1.4	
17	10,380	75.00	10.9	Upper Marker
18	12,655	0.00	0.0	

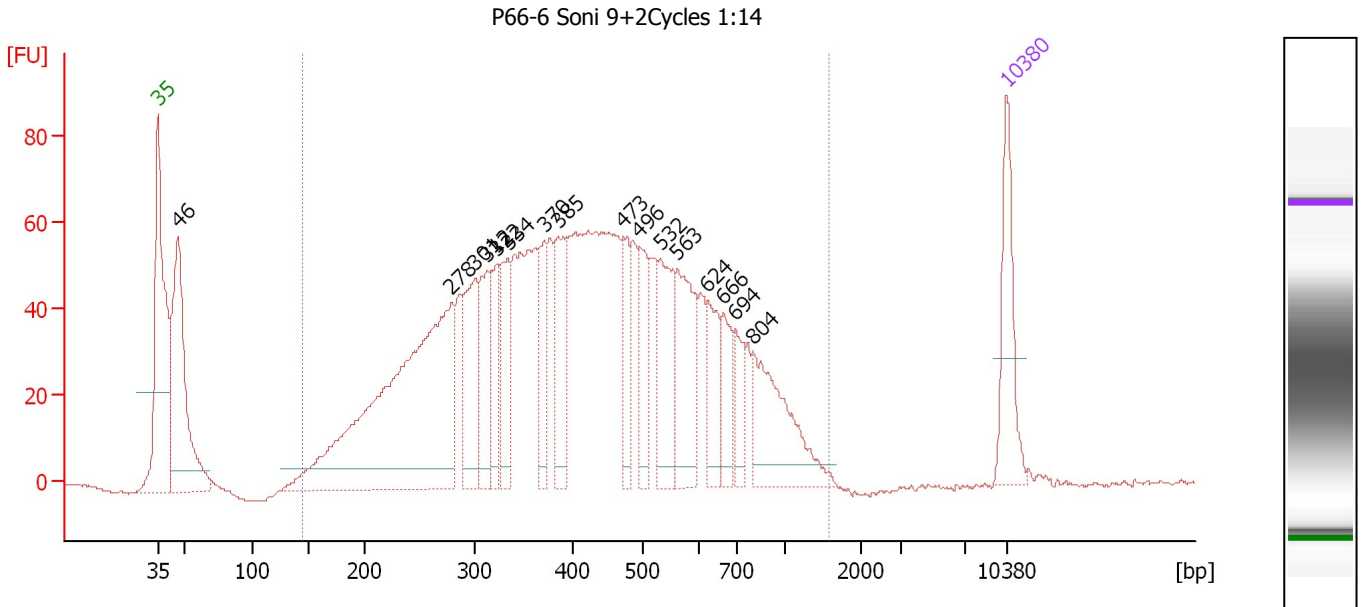
Region table for sample 7 : JHP Lib

From [bp]	To [bp]	Average Size [bp]	Molarity [pmol/l]	Conc. [pg/μl]	Corr. Area	% of Total	Size distribution in CV [%]	Color
244	2,059	694	11,691.4	3,998.01	3,491.8	96	51.0	Blue

Assay Class: High Sensitivity DNA Assay
 Data Path: C:\...ents and Settings\Bioanalyzer\2012-07-24\2012-07-24_004.xad

Created: 7/24/2012 4:42:55 PM
 Modified: 7/24/2012 5:20:41 PM

Electropherogram Summary Continued ...



Overall Results for sample 8 : P66-6 Soni 9+2Cycles 1:14

Number of peaks found: 16 Corr. Area 1: 2,018.6
 Noise: 0.2

Peak table for sample 8 : P66-6 Soni 9+2Cycles 1:14

Peak	Size [bp]	Conc. [pg/μl]	Molarity [pmol/l]	Observations
1	35	125.00	5,411.3	Lower Marker
2	46	319.87	10,508.9	
3	278	619.71	3,373.4	
4	301	129.21	651.5	
5	312	90.06	437.9	
6	322	74.89	352.3	
7	334	85.51	388.2	
8	370	68.50	280.3	
9	385	93.99	369.6	
10	473	66.58	213.3	
11	496	80.05	244.4	
12	532	103.22	294.1	
13	563	126.81	341.6	
14	624	60.63	147.3	
15	666	48.86	111.2	
16	694	39.39	85.9	
17	804	133.28	251.3	
18	10,380	75.00	10.9	Upper Marker

Region table for sample 8 : P66-6 Soni 9+2Cycles 1:14

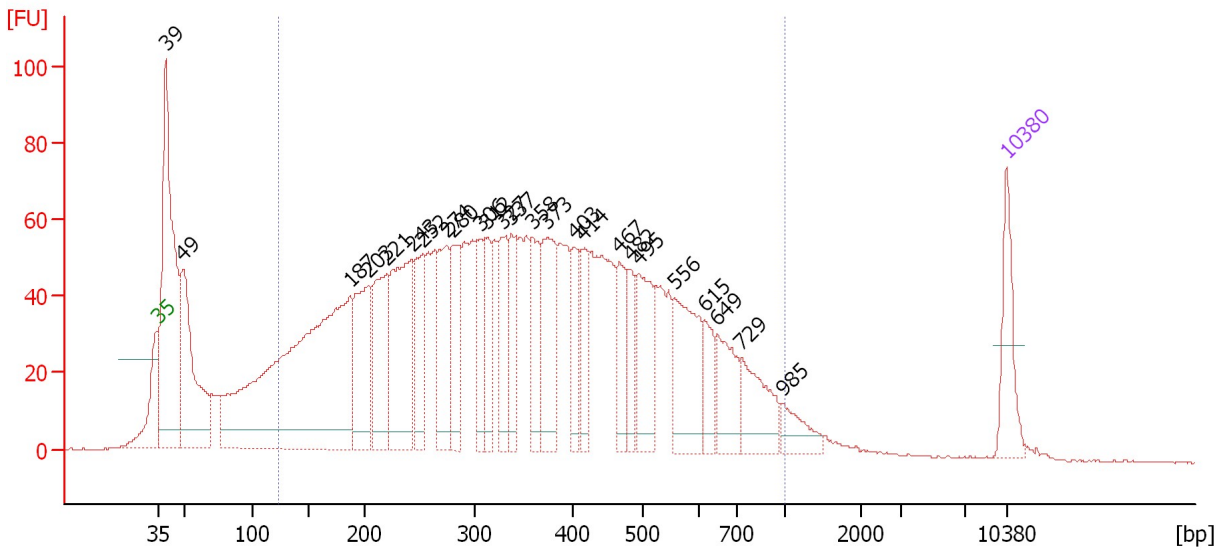
From [bp]	To [bp]	Average Size [bp]	Molarity [pmol/l]	Conc. [pg/μl]	Corr. Area	% of Total	Size distribution in CV [%]	Color
144	1,568	451	11,644.9	2,741.49	2,018.6	93	43.8	Blue

Assay Class: High Sensitivity DNA Assay
 Data Path: C:\...ents and Settings\Bioanalyzer\2012-07-24\2012-07-24_004.xad

Created: 7/24/2012 4:42:55 PM
 Modified: 7/24/2012 5:20:41 PM

Electropherogram Summary Continued ...

P66-11 Soni 9+4Cycles 1:12



Overall Results for sample 9 : P66-11 Soni 9+4Cycles 1:12

Number of peaks found: 25 Corr. Area 1: 2,545.0
 Noise: 0.2

Peak table for sample 9 : P66-11 Soni 9+4Cycles 1:12

Peak	Size [bp]	Conc. [pg/μl]	Molarity [pmol/l]	Observations
1	35	125.00	5,411.3	Lower Marker
2	39	597.70	22,969.7	
3	49	327.76	10,142.9	
4	187	977.74	7,936.7	
5	203	201.56	1,501.1	
6	221	200.69	1,378.7	
7	243	285.55	1,782.0	
8	252	124.12	746.6	
9	274	153.06	845.9	
10	280	122.61	662.5	
11	306	96.23	476.2	
12	312	95.18	462.3	
13	327	113.63	526.0	
14	337	97.90	440.3	
15	358	104.76	443.4	
16	373	164.69	668.4	
17	403	74.38	279.6	
18	414	79.06	289.4	
19	467	84.98	275.8	
20	482	62.35	195.9	
21	495	131.50	402.4	
22	556	161.82	440.7	
23	615	56.93	140.4	
24	649	91.97	214.6	
25	729	101.35	210.7	
26	985	44.02	67.7	

Assay Class: High Sensitivity DNA Assay
 Data Path: C:\...ents and Settings\Bioanalyzer\2012-07-24\2012-07-24_004.xad

Created: 7/24/2012 4:42:55 PM
 Modified: 7/24/2012 5:20:41 PM

Electropherogram Summary Continued ...

... Peak table for sample 9 : P66-11 Soni 9+4Cycles 1:12

Peak	Size [bp]	Conc. [pg/μl]	Molarity [pmol/l]	Observations
27	10,380	75.00	10.9	Upper Marker

Region table for sample 9 : P66-11 Soni 9+4Cycles 1:12

From [bp]	To [bp]	Average Size [bp]	Molarity [pmol/l]	Conc. [pg/μl]	Corr. Area	% of Total	Size distribution in CV [%]	Color
123	1,000	374	24,944.5	4,558.29	2,545.0	80	44.8	

Assay Class: High Sensitivity DNA Assay
Data Path: C:\...ents and Settings\Bioanalyzer\2012-07-24\2012-07-24_004.xad

Created: 7/24/2012 4:42:55 PM
Modified: 7/24/2012 5:20:41 PM

Gel Image

