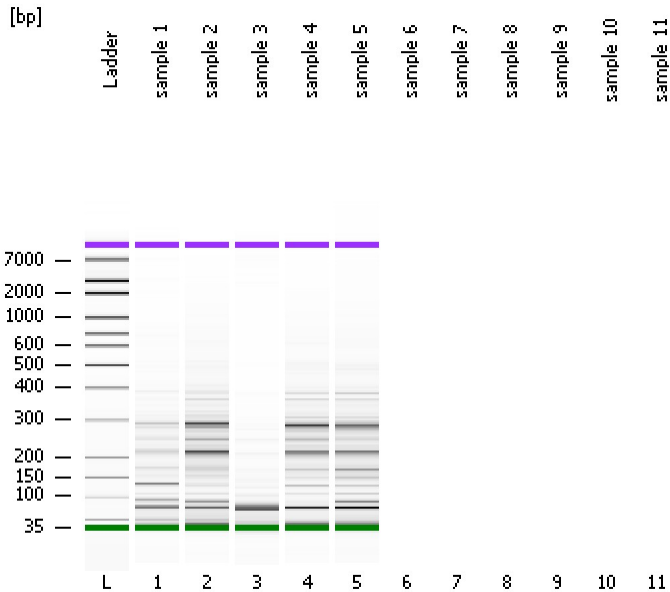


Assay Class: High Sensitivity DNA Assay  
Data Path: C:\...ents and Settings\Bioanalyzer\2012-07-25\2012-07-25\_001.xad

Created: 7/25/2012 10:00:16 AM  
Modified: 7/25/2012 10:24:29 AM

**Electrophoresis File Run Summary**



Instrument Information:

Instrument Name: DE13701086      Firmware: C.01.069  
Serial#: DE13701086      Type: G2938B

Assay Information:

Assay Origin Path: C:\Program Files\Agilent\2100 bioanalyzer\2100 expert\assays\dsDNA\High Sensitivity DNA.xsy  
Assay Class: High Sensitivity DNA Assay  
Version: 1.03  
Assay Comments: Copyright © 2003-2010 Agilent Technologies

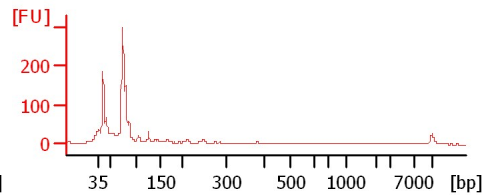
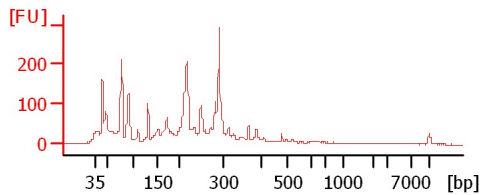
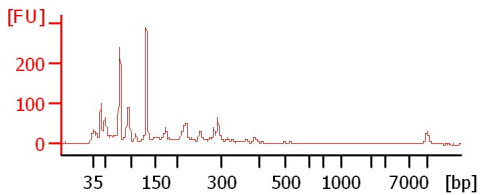
Chip Information:

Chip Lot #:   
Reagent Kit Lot #:   
Chip Comments:

sample 1

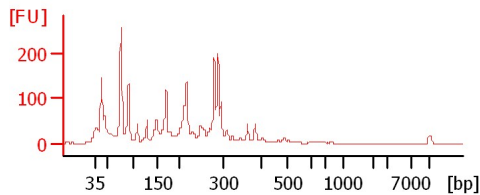
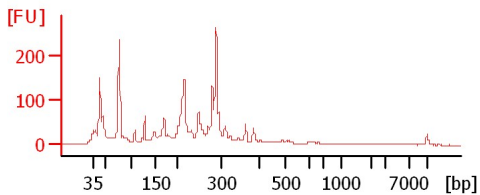
sample 2

sample 3



sample 4

sample 5



Assay Class: High Sensitivity DNA Assay  
 Data Path: C:\...ents and Settings\Bioanalyzer\2012-07-25\2012-07-25\_001.xad

Created: 7/25/2012 10:00:16 AM  
 Modified: 7/25/2012 10:24:29 AM

**Electrophoresis File Run Summary (Chip Summary)**

Sample Name	Sample Comment	Rest. Digest	Status	Observation	Result Label	Result Color
sample 1		<input type="checkbox"/>	✓			
sample 2		<input type="checkbox"/>	✓			
sample 3		<input type="checkbox"/>	✓			
sample 4		<input type="checkbox"/>	✓			
sample 5		<input type="checkbox"/>	✓			
sample 6		<input type="checkbox"/>				
sample 7		<input type="checkbox"/>				
sample 8		<input type="checkbox"/>				
sample 9		<input type="checkbox"/>				
sample 10		<input type="checkbox"/>				
sample 11		<input type="checkbox"/>				
Ladder		<input type="checkbox"/>	✓			

**Chip Lot #**

**Reagent Kit Lot #**

**Chip Comments :**

Assay Class: High Sensitivity DNA Assay  
Data Path: C:\...ents and Settings\Bioanalyzer\2012-07-25\2012-07-25\_001.xad

Created: 7/25/2012 10:00:16 AM  
Modified: 7/25/2012 10:24:29 AM

**Electrophoresis Assay Details**

**General Analysis Settings**

Number of Available Sample and Ladder Wells (Max.) : 12  
Minimum Visible Range [s] : 32  
Maximum Visible Range [s] : 138  
Start Analysis Time Range [s] : 33  
End Analysis Time Range [s] : 137.5  
Ladder Concentration [pg/μl] : 1950  
Uses Standard Area for Ladder Fragments  
Lower Marker Concentration [pg/μl] : 125  
Upper Marker Concentration [pg/μl] : 75  
Used Upper Marker for Quantitation  
Standard Curve Fit is Point to Point  
Show Data Aligned to Lower and Upper Marker

**Integrator Settings**

Integration Start Time [s] : 33.05  
Integration End Time [s] : 137  
Slope Threshold : 0.8  
Height Threshold [FU] : 5  
Area Threshold : 0.1  
Width Threshold [s] : 0.6  
Baseline Plateau [s] : 0.5

**Filter Settings**

Filter Width [s] : 0.5  
Polynomial Order : 4

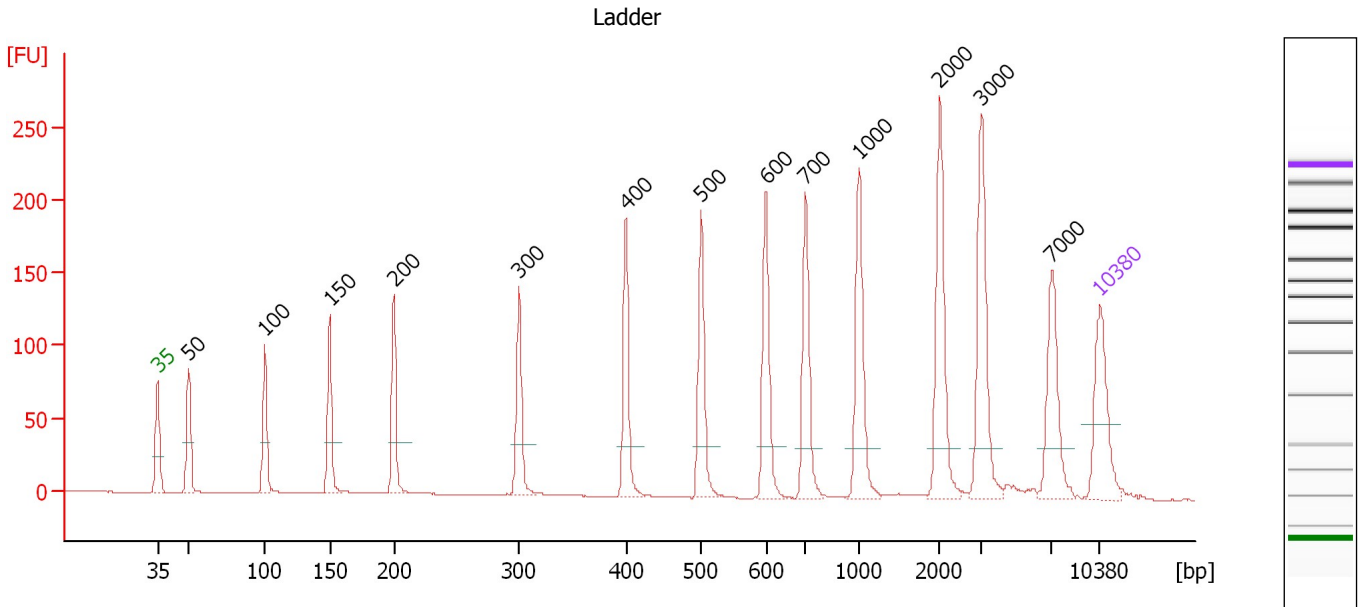
**Ladder**

Ladder Peak	Size	Area
1	35	160
2	50	210
3	100	208
4	150	221
5	200	242
6	300	270
7	400	305
8	500	306
9	600	336
10	700	321
11	1000	366
12	2000	413
13	3000	411
14	7000	400
15	10380	214

Assay Class: High Sensitivity DNA Assay  
 Data Path: C:\...ents and Settings\Bioanalyzer\2012-07-25\2012-07-25\_001.xad

Created: 7/25/2012 10:00:16 AM  
 Modified: 7/25/2012 10:24:29 AM

**Electropherogram Summary**



**Overall Results for Ladder**

Noise: 0.1

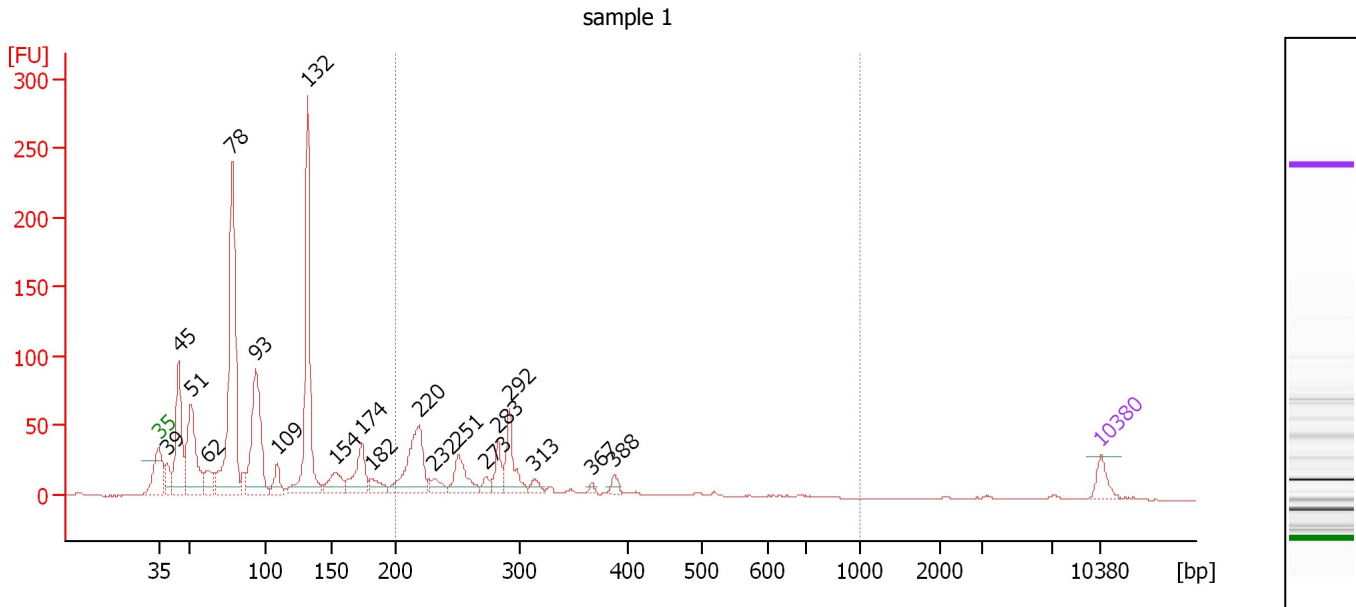
**Peak table for Ladder**

Peak	Size [bp]	Conc. [pg/μl]	Molarity [pmol/l]	Observations
1	35	125.00	5,411.3	Lower Marker
2	50	150.00	4,545.5	Ladder Peak
3	100	150.00	2,272.7	Ladder Peak
4	150	150.00	1,515.2	Ladder Peak
5	200	150.00	1,136.4	Ladder Peak
6	300	150.00	757.6	Ladder Peak
7	400	150.00	568.2	Ladder Peak
8	500	150.00	454.5	Ladder Peak
9	600	150.00	378.8	Ladder Peak
10	700	150.00	324.7	Ladder Peak
11	1,000	150.00	227.3	Ladder Peak
12	2,000	150.00	113.6	Ladder Peak
13	3,000	150.00	75.8	Ladder Peak
14	7,000	150.00	32.5	Ladder Peak
15	10,380	75.00	10.9	Upper Marker

Assay Class: High Sensitivity DNA Assay  
 Data Path: C:\...ents and Settings\Bioanalyzer\2012-07-25\2012-07-25\_001.xad

Created: 7/25/2012 10:00:16 AM  
 Modified: 7/25/2012 10:24:29 AM

**Electropherogram Summary Continued ...**



**Overall Results for sample 1 : sample 1**

Number of peaks found: 20                      Corr. Area 1: 458.9  
 Noise: 0.3

**Peak table for sample 1 : sample 1**

Peak	Size [bp]	Conc. [pg/μl]	Molarity [pmol/l]	Observations
1	35	125.00	5,411.3	Lower Marker
2	39	169.21	6,591.2	
3	45	719.91	24,377.5	
4	51	746.43	22,261.8	
5	62	154.62	3,794.7	
6	78	1,915.56	37,233.7	
7	93	914.77	14,838.1	
8	109	133.27	1,851.0	
9	132	1,354.64	15,536.2	
10	154	188.82	1,854.3	
11	174	307.00	2,667.2	
12	182	108.94	909.2	
13	220	556.88	3,841.8	
14	232	93.28	610.3	
15	251	233.61	1,410.8	
16	273	53.28	295.8	
17	283	136.79	733.4	
18	292	275.31	1,429.6	
19	313	49.48	239.2	
20	367	18.11	74.8	
21	388	44.31	173.0	
22	10,380	75.00	10.9	Upper Marker

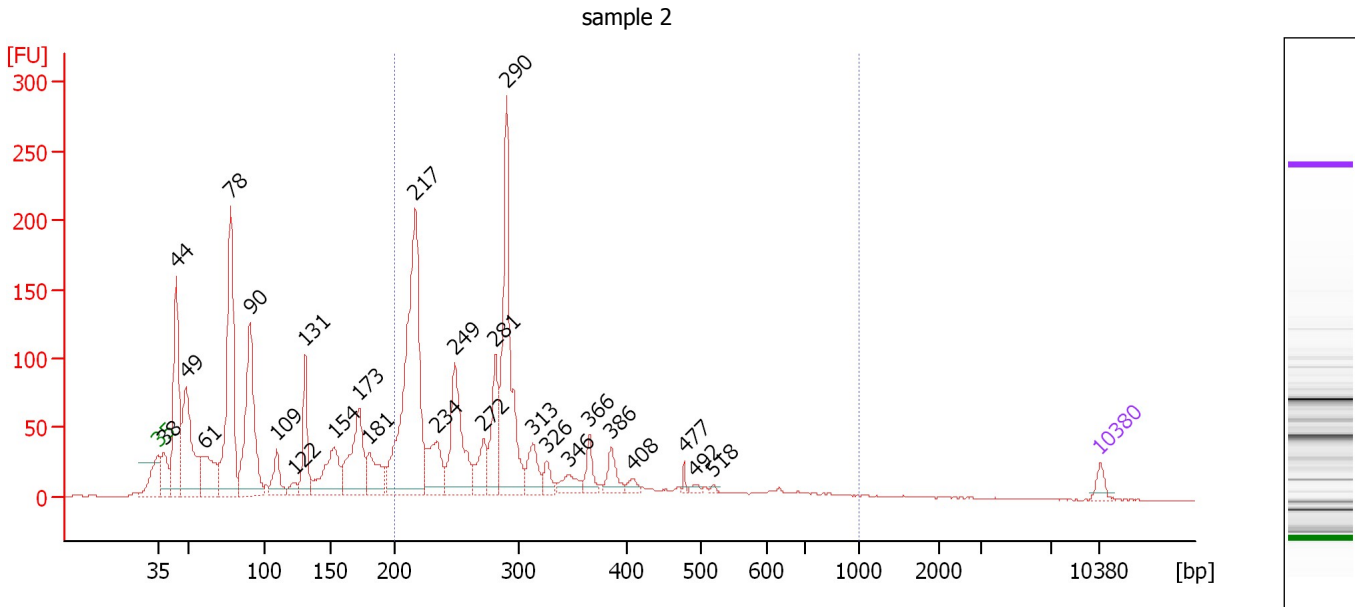
**Region table for sample 1 : sample 1**

From [bp]	To [bp]	Average Size [bp]	Molarity [pmol/l]	Conc. [pg/μl]	Corr. Area	% of Total	Size distribution in CV [%]	Color
200	1,000	305	10,934.9	1,978.63	458.9	25	37.1	Blue

Assay Class: High Sensitivity DNA Assay  
 Data Path: C:\...ents and Settings\Bioanalyzer\2012-07-25\2012-07-25\_001.xad

Created: 7/25/2012 10:00:16 AM  
 Modified: 7/25/2012 10:24:29 AM

**Electropherogram Summary Continued ...**



**Overall Results for sample 2 : sample 2**

Number of peaks found: 27                      Corr. Area 1: 1,534.5  
 Noise: 0.2

**Peak table for sample 2 : sample 2**

Peak	Size [bp]	Conc. [pg/μl]	Molarity [pmol/l]	Observations
1	35	125.00	5,411.3	Lower Marker
2	38	453.21	18,024.8	
3	44	1,741.55	59,958.5	
4	49	1,463.33	45,438.6	
5	61	716.67	17,928.3	
6	78	2,525.00	49,223.0	
7	90	1,879.64	31,537.3	
8	109	353.52	4,904.8	
9	122	119.86	1,486.2	
10	131	661.27	7,639.9	
11	154	757.16	7,470.7	
12	173	994.15	8,707.4	
13	181	487.91	4,091.8	
14	217	3,233.30	22,544.9	
15	234	576.58	3,725.5	
16	249	1,088.27	6,624.7	
17	272	367.47	2,049.4	
18	281	622.41	3,356.4	
19	290	1,994.53	10,411.3	
20	313	316.14	1,530.2	
21	326	148.08	688.1	
22	346	180.10	788.4	
23	366	198.35	821.9	
24	386	214.28	840.6	
25	408	72.66	269.7	
26	477	40.80	129.6	

Assay Class: High Sensitivity DNA Assay  
Data Path: C:\...ents and Settings\Bioanalyzer\2012-07-25\2012-07-25\_001.xad

Created: 7/25/2012 10:00:16 AM  
Modified: 7/25/2012 10:24:29 AM

**Electropherogram Summary Continued ...****... Peak table for sample 2 : sample 2**

Peak	Size [bp]	Conc. [pg/μl]	Molarity [pmol/l]	Observations
27	492	37.49	115.5	
28	518	22.28	65.1	
29	▶ 10,380	75.00	10.9	Upper Marker

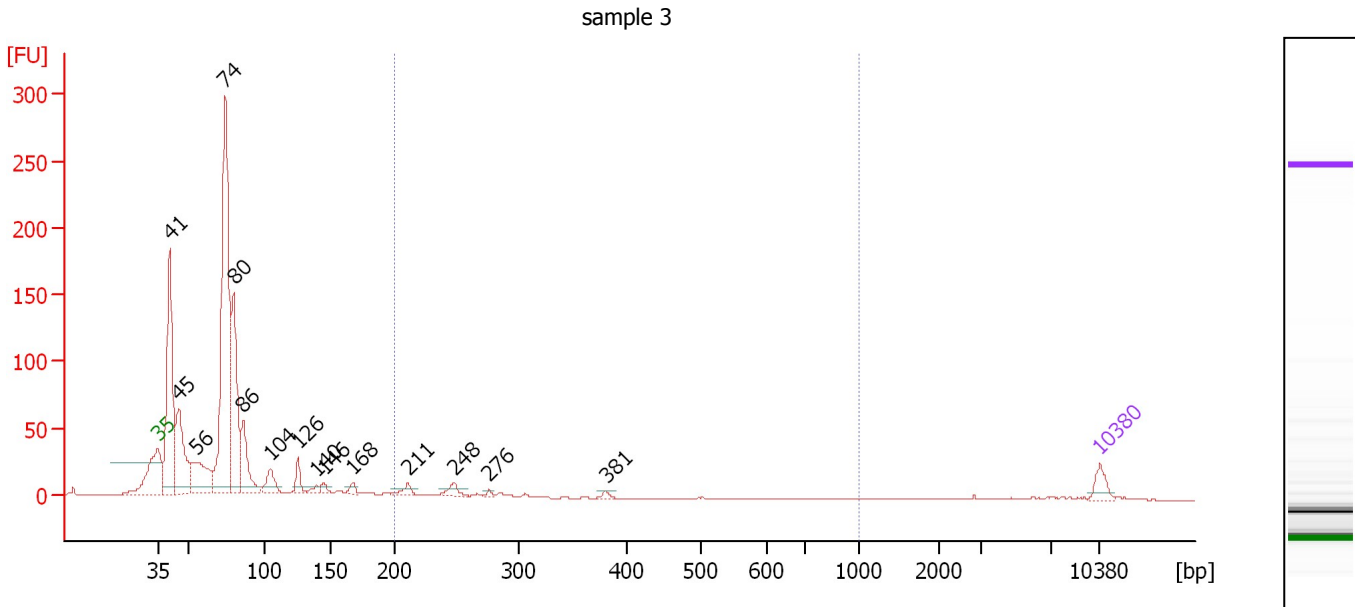
**Region table for sample 2 : sample 2**

From [bp]	To [bp]	Average Size [bp]	Molarity [pmol/l]	Conc. [pg/μl]	Corr. Area	% of Total	Size distribution in CV [%]	Color
200	1,000	301	56,039.1	10,058.23	1,534.5	49	37.2	■

Assay Class: High Sensitivity DNA Assay  
 Data Path: C:\...ents and Settings\Bioanalyzer\2012-07-25\2012-07-25\_001.xad

Created: 7/25/2012 10:00:16 AM  
 Modified: 7/25/2012 10:24:29 AM

**Electropherogram Summary Continued ...**



**Overall Results for sample 3 : sample 3**

Number of peaks found: 15                      Corr. Area 1: 49.6  
 Noise: 0.2

**Peak table for sample 3 : sample 3**

Peak	Size [bp]	Conc. [pg/μl]	Molarity [pmol/l]	Observations
1	35	125.00	5,411.3	Lower Marker
2	41	1,652.03	61,418.1	
3	45	813.75	27,182.4	
4	56	567.29	15,405.4	
5	74	2,985.33	61,036.8	
6	80	1,126.65	21,455.6	
7	86	488.78	8,631.8	
8	104	179.73	2,609.3	
9	126	129.06	1,553.5	
10	140	46.30	500.9	
11	146	50.64	527.2	
12	168	51.52	464.3	
13	211	67.72	485.4	
14	248	76.06	464.8	
15	276	20.18	110.8	
16	381	20.43	81.2	
17	10,380	75.00	10.9	Upper Marker

**Region table for sample 3 : sample 3**

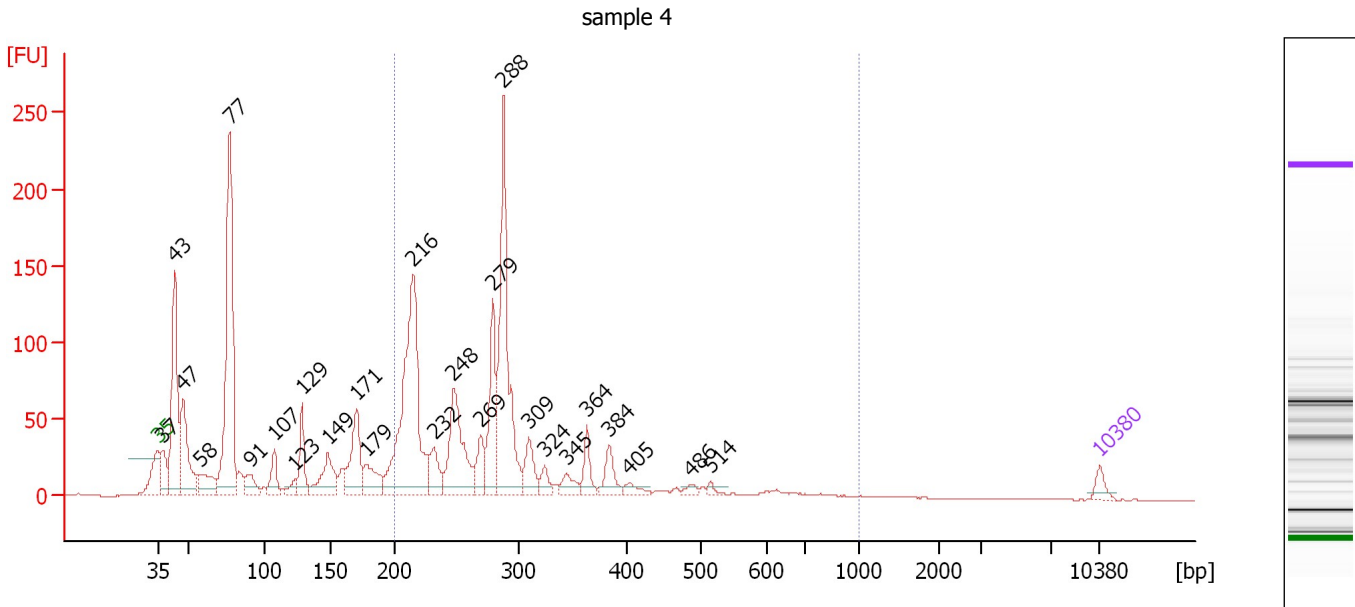
From [bp]	To [bp]	Average Size [bp]	Molarity [pmol/l]	Conc. [pg/μl]	Corr. Area	% of Total	Size distribution in CV [%]	Color
200	1,000	255	1,634.4	267.86	49.6	4	18.8	Blue



Assay Class: High Sensitivity DNA Assay  
 Data Path: C:\...ents and Settings\Bioanalyzer\2012-07-25\2012-07-25\_001.xad

Created: 7/25/2012 10:00:16 AM  
 Modified: 7/25/2012 10:24:29 AM

**Electropherogram Summary Continued ...**



**Overall Results for sample 4 : sample 4**

Number of peaks found: 26                      Corr. Area 1: 1,229.0  
 Noise: 0.2

**Peak table for sample 4 : sample 4**

Peak	Size [bp]	Conc. [pg/μl]	Molarity [pmol/l]	Observations
1	35	125.00	5,411.3	Lower Marker
2	37	402.10	16,292.0	
3	43	1,773.22	61,928.1	
4	47	1,031.12	33,045.9	
5	58	383.02	9,993.4	
6	77	3,004.48	59,021.2	
7	91	224.45	3,757.3	
8	107	302.42	4,265.4	
9	123	129.13	1,588.9	
10	129	427.10	5,022.1	
11	149	523.72	5,330.9	
12	171	701.83	6,220.4	
13	179	371.78	3,153.3	
14	216	2,684.39	18,865.4	
15	232	339.95	2,221.1	
16	248	1,061.85	6,494.6	
17	269	300.59	1,690.1	
18	279	789.31	4,288.5	
19	288	2,047.27	10,779.5	
20	309	310.65	1,521.4	
21	324	134.84	631.0	
22	345	159.04	699.4	
23	364	223.25	930.4	
24	384	231.41	913.7	
25	405	86.65	324.3	
26	486	52.87	164.7	

Assay Class: High Sensitivity DNA Assay  
Data Path: C:\...ents and Settings\Bioanalyzer\2012-07-25\2012-07-25\_001.xad

Created: 7/25/2012 10:00:16 AM  
Modified: 7/25/2012 10:24:29 AM

**Electropherogram Summary Continued ...****... Peak table for sample 4 : sample 4**

Peak	Size [bp]	Conc. [pg/ $\mu$ l]	Molarity [pmol/l]	Observations
27	514	38.35	113.1	
28	▶ 10,380	75.00	10.9	Upper Marker

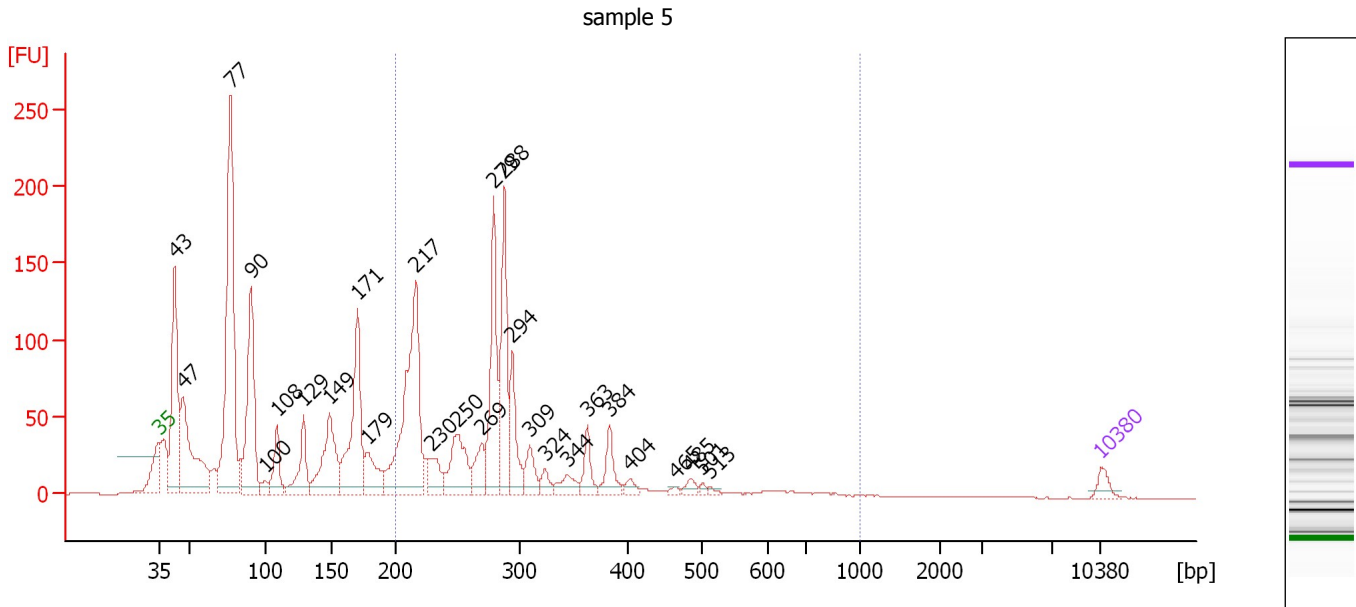
**Region table for sample 4 : sample 4**

From [bp]	To [bp]	Average Size [bp]	Molarity [pmol/l]	Conc. [pg/ $\mu$ l]	Corr. Area	% of Total	Size distribution in CV [%]	Color
200	1,000	299	50,383.2	9,093.33	1,229.0	52	35.0	■

Assay Class: High Sensitivity DNA Assay  
 Data Path: C:\...ents and Settings\Bioanalyzer\2012-07-25\2012-07-25\_001.xad

Created: 7/25/2012 10:00:16 AM  
 Modified: 7/25/2012 10:24:29 AM

**Electropherogram Summary Continued ...**



**Overall Results for sample 5 : sample 5**

Number of peaks found: 27                      Corr. Area 1: 1,110.5  
 Noise: 0.1

**Peak table for sample 5 : sample 5**

Peak	Size [bp]	Conc. [pg/μl]	Molarity [pmol/l]	Observations
1	35	125.00	5,411.3	Lower Marker
2	43	1,582.70	55,847.6	
3	47	1,386.84	44,947.8	
4	77	3,008.46	59,206.8	
5	90	1,469.23	24,647.0	
6	100	85.03	1,291.2	
7	108	385.91	5,397.7	
8	129	457.49	5,372.1	
9	149	866.04	8,793.1	
10	171	1,285.18	11,378.3	
11	179	396.03	3,356.3	
12	217	2,015.20	14,072.9	
13	230	263.21	1,737.3	
14	250	607.26	3,680.5	
15	269	284.11	1,598.0	
16	279	1,019.46	5,539.9	
17	288	1,027.08	5,408.4	
18	294	473.57	2,440.4	
19	309	232.10	1,138.3	
20	324	105.92	495.9	
21	344	163.85	722.1	
22	363	207.28	864.3	
23	384	259.18	1,023.9	
24	404	74.09	277.6	
25	465	33.06	107.8	
26	485	74.35	232.4	

Assay Class: High Sensitivity DNA Assay  
Data Path: C:\...ents and Settings\Bioanalyzer\2012-07-25\2012-07-25\_001.xad

Created: 7/25/2012 10:00:16 AM  
Modified: 7/25/2012 10:24:29 AM

**Electropherogram Summary Continued ...****... Peak table for sample 5 : sample 5**

Peak	Size [bp]	Conc. [pg/μl]	Molarity [pmol/l]	Observations
27	501	29.70	89.9	
28	513	26.75	79.1	
29	▶ 10,380	75.00	10.9	Upper Marker

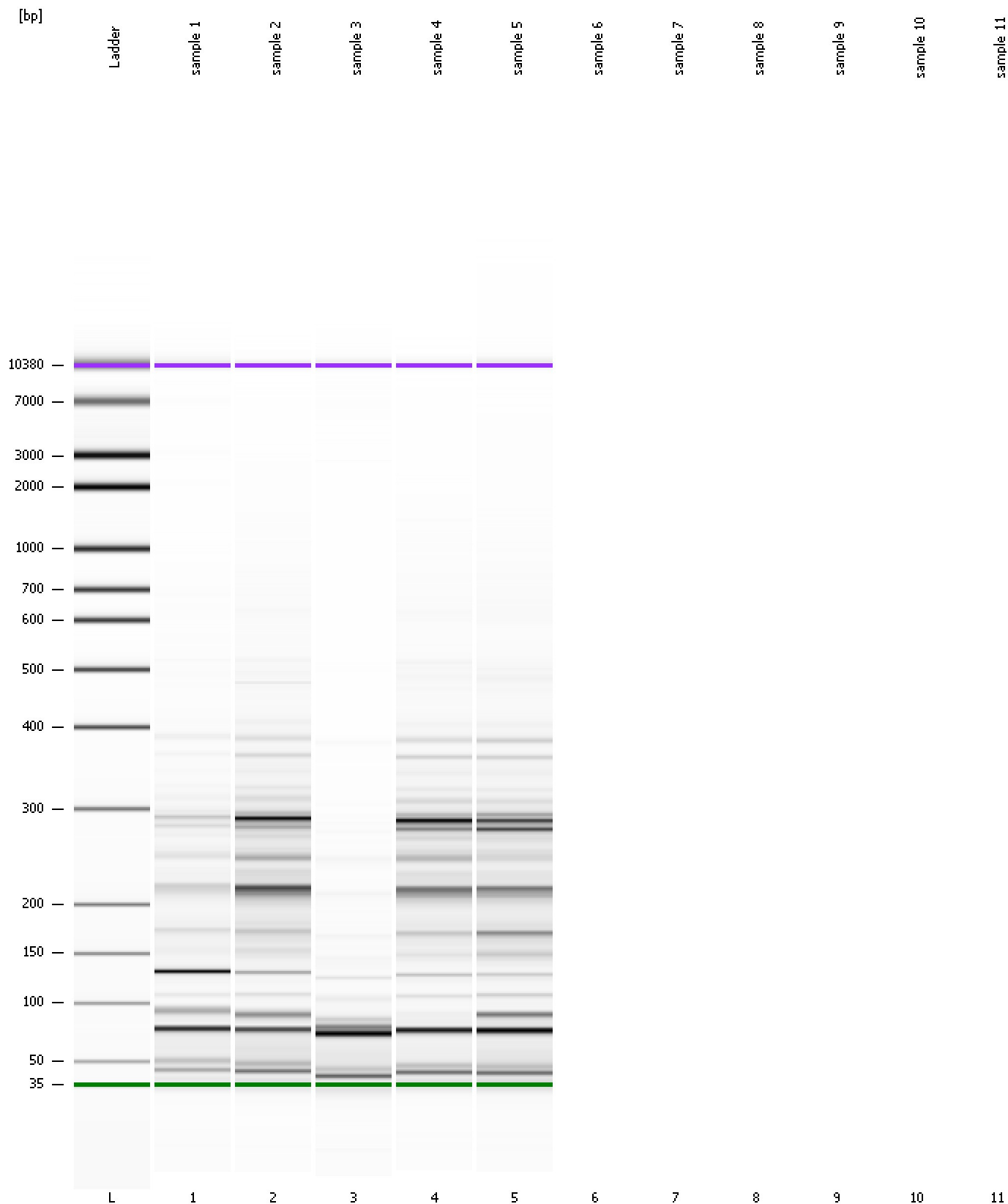
**Region table for sample 5 : sample 5**

From [bp]	To [bp]	Average Size [bp]	Molarity [pmol/l]	Conc. [pg/μl]	Corr. Area	% of Total	Size distribution in CV [%]	Color
200	1,000	303	39,969.2	7,301.30	1,110.5	43	35.1	■

Assay Class: High Sensitivity DNA Assay  
Data Path: C:\...ents and Settings\Bioanalyzer\2012-07-25\2012-07-25\_001.xad

Created: 7/25/2012 10:00:16 AM  
Modified: 7/25/2012 10:24:29 AM

**Gel Image**



Assay Class: High Sensitivity DNA Assay  
Data Path: C:\...ents and Settings\Bioanalyzer\2012-07-25\2012-07-25\_001.xad

Created: 7/25/2012 10:00:16 AM  
Modified: 7/25/2012 10:24:29 AM

**Invalid Samples**

Sample 6 has not been run, no results available.

Sample 7 has not been run, no results available.

Sample 8 has not been run, no results available.

Sample 9 has not been run, no results available.