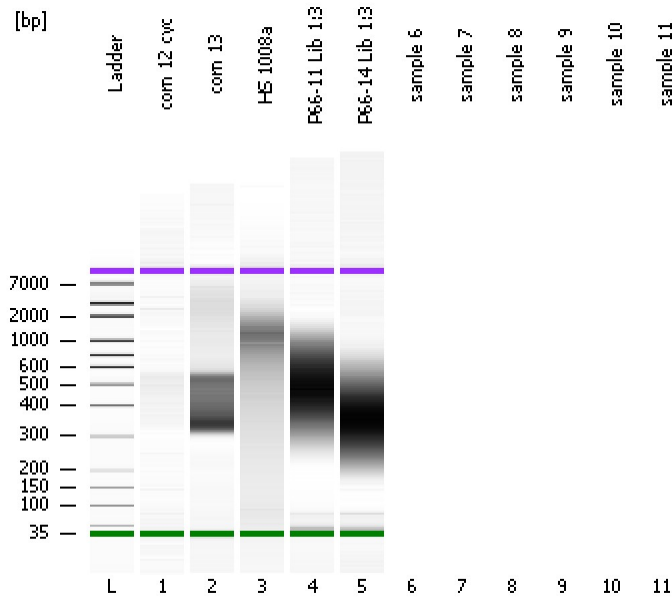


Assay Class: High Sensitivity DNA Assay  
Data Path: C:\...ents and Settings\Bioanalyzer\2012-07-25\2012-07-25\_002.xad

Created: 7/25/2012 2:41:59 PM  
Modified: 7/25/2012 3:10:50 PM

### Electrophoresis File Run Summary



#### Instrument Information:

Instrument Name: DE13701086      Firmware: C.01.069  
Serial#: DE13701086      Type: G2938B

#### Assay Information:

Assay Origin Path: C:\Program Files\Agilent\2100 bioanalyzer\2100 expert\assays\dsDNA\High Sensitivity DNA.xsy  
Assay Class: High Sensitivity DNA Assay  
Version: 1.03  
Assay Comments: Copyright © 2003-2010 Agilent Technologies

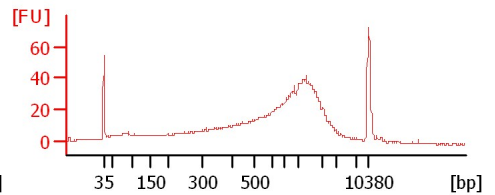
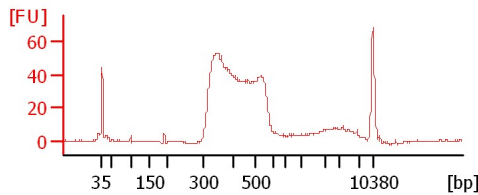
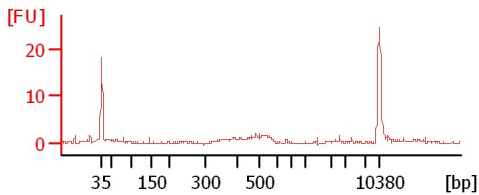
#### Chip Information:

Chip Lot #:  
Reagent Kit Lot #:  
Chip Comments:

corn 12 cyc

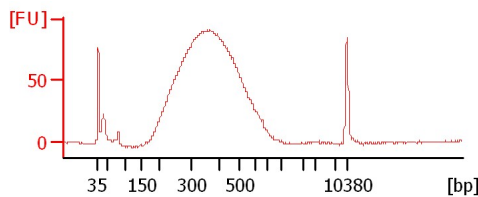
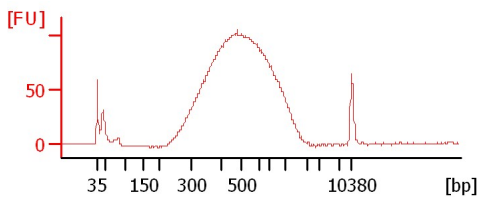
corn 13

HS 1008a



P66-11 Lib 1:3

P66-14 Lib 1:3



Assay Class: High Sensitivity DNA Assay  
 Data Path: C:\...ents and Settings\Bioanalyzer\2012-07-25\2012-07-25\_002.xad

Created: 7/25/2012 2:41:59 PM  
 Modified: 7/25/2012 3:10:50 PM

**Electrophoresis File Run Summary (Chip Summary)**

Sample Name	Sample Comment	Rest. Digest	Status	Observation	Result Label	Result Color
corn 12 cyc		<input type="checkbox"/>	✓			
corn 13		<input type="checkbox"/>	✓			
HS 1008a		<input type="checkbox"/>	✓			
P66-11 Lib 1:3		<input type="checkbox"/>	✓			
P66-14 Lib 1:3		<input type="checkbox"/>	✓			
sample 6		<input type="checkbox"/>				
sample 7		<input type="checkbox"/>				
sample 8		<input type="checkbox"/>				
sample 9		<input type="checkbox"/>				
sample 10		<input type="checkbox"/>				
sample 11		<input type="checkbox"/>				
Ladder		<input type="checkbox"/>	✓			

**Chip Lot #**

**Reagent Kit Lot #**

**Chip Comments :**

Assay Class: High Sensitivity DNA Assay  
Data Path: C:\...ents and Settings\Bioanalyzer\2012-07-25\2012-07-25\_002.xad

Created: 7/25/2012 2:41:59 PM  
Modified: 7/25/2012 3:10:50 PM

**Electrophoresis Assay Details**

**General Analysis Settings**

Number of Available Sample and Ladder Wells (Max.) : 12  
Minimum Visible Range [s] : 32  
Maximum Visible Range [s] : 138  
Start Analysis Time Range [s] : 33  
End Analysis Time Range [s] : 137.5  
Ladder Concentration [pg/μl] : 1950  
Uses Standard Area for Ladder Fragments  
Lower Marker Concentration [pg/μl] : 125  
Upper Marker Concentration [pg/μl] : 75  
Used Upper Marker for Quantitation  
Standard Curve Fit is Point to Point  
Show Data Aligned to Lower and Upper Marker

**Integrator Settings**

Integration Start Time [s] : 33.05  
Integration End Time [s] : 137  
Slope Threshold : 0.8  
Height Threshold [FU] : 5  
Area Threshold : 0.1  
Width Threshold [s] : 0.6  
Baseline Plateau [s] : 0.5

**Filter Settings**

Filter Width [s] : 0.5  
Polynomial Order : 4

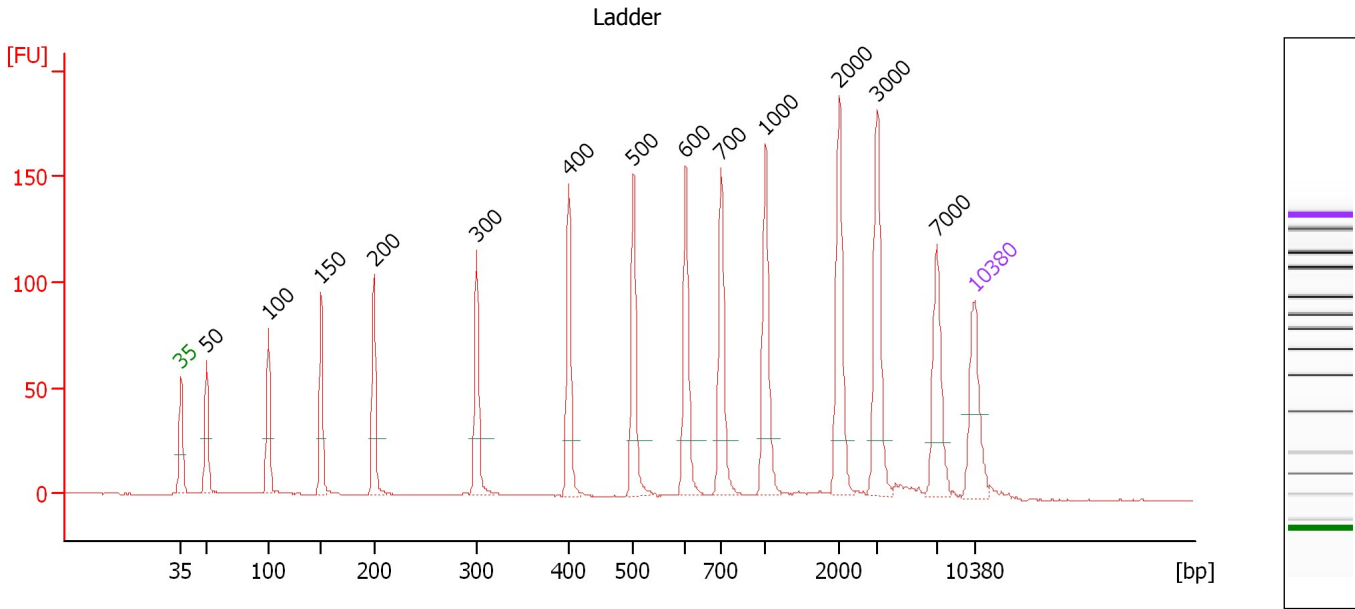
**Ladder**

Ladder Peak	Size	Area
1	35	160
2	50	210
3	100	208
4	150	221
5	200	242
6	300	270
7	400	305
8	500	306
9	600	336
10	700	321
11	1000	366
12	2000	413
13	3000	411
14	7000	400
15	10380	214

Assay Class: High Sensitivity DNA Assay  
 Data Path: C:\...ents and Settings\Bioanalyzer\2012-07-25\2012-07-25\_002.xad

Created: 7/25/2012 2:41:59 PM  
 Modified: 7/25/2012 3:10:50 PM

**Electropherogram Summary**



**Overall Results for Ladder**

Noise: 0.1

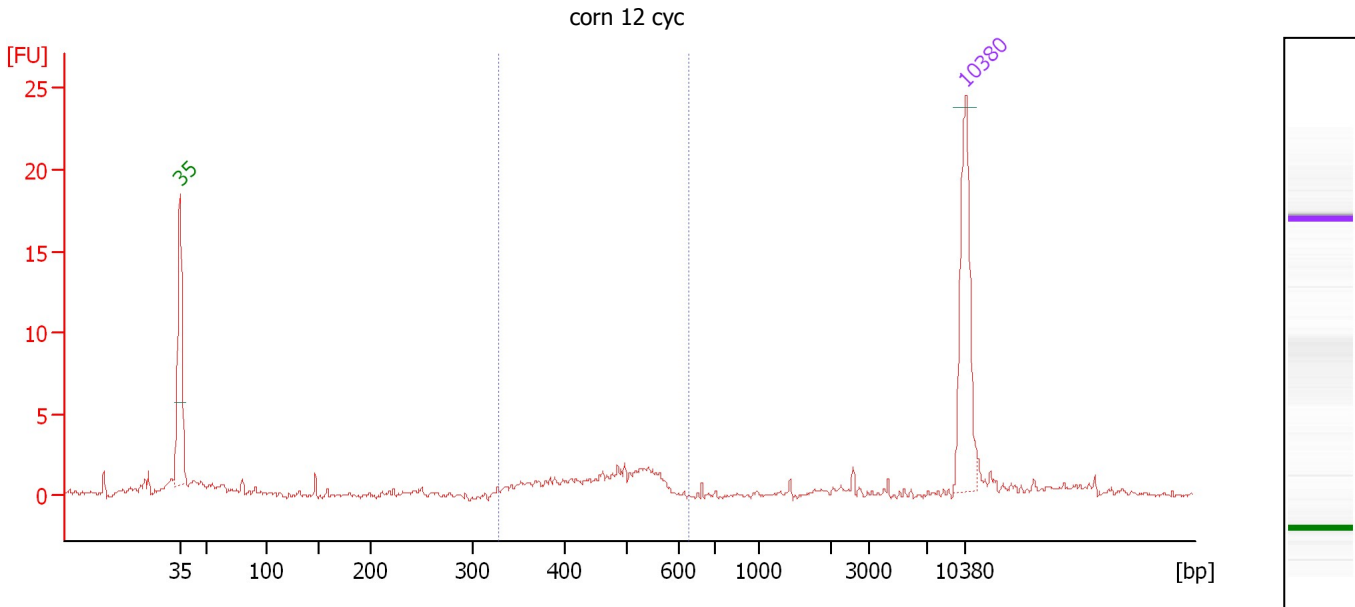
**Peak table for Ladder**

Peak	Size [bp]	Conc. [pg/μl]	Molarity [pmol/l]	Observations
1	35	125.00	5,411.3	Lower Marker
2	50	150.00	4,545.5	Ladder Peak
3	100	150.00	2,272.7	Ladder Peak
4	150	150.00	1,515.2	Ladder Peak
5	200	150.00	1,136.4	Ladder Peak
6	300	150.00	757.6	Ladder Peak
7	400	150.00	568.2	Ladder Peak
8	500	150.00	454.5	Ladder Peak
9	600	150.00	378.8	Ladder Peak
10	700	150.00	324.7	Ladder Peak
11	1,000	150.00	227.3	Ladder Peak
12	2,000	150.00	113.6	Ladder Peak
13	3,000	150.00	75.8	Ladder Peak
14	7,000	150.00	32.5	Ladder Peak
15	10,380	75.00	10.9	Upper Marker

Assay Class: High Sensitivity DNA Assay  
 Data Path: C:\...ents and Settings\Bioanalyzer\2012-07-25\2012-07-25\_002.xad

Created: 7/25/2012 2:41:59 PM  
 Modified: 7/25/2012 3:10:50 PM

**Electropherogram Summary Continued ...**



**Overall Results for sample 1 : corn 12 cyc**

Number of peaks found: 0                      Corr. Area 1: 17.9  
 Noise: 0.2

**Peak table for sample 1 : corn 12 cyc**

Peak	Size [bp]	Conc. [pg/μl]	Molarity [pmol/l]	Observations
1	35	125.00	5,411.3	Lower Marker
2	10,380	75.00	10.9	Upper Marker

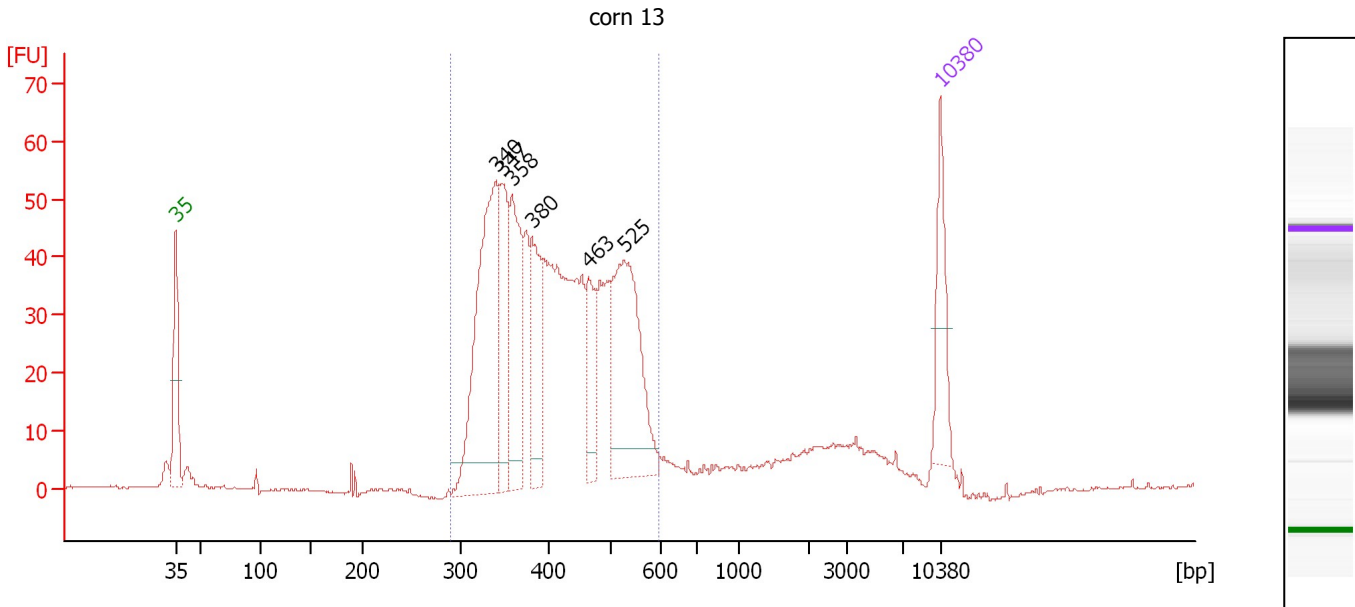
**Region table for sample 1 : corn 12 cyc**

From [bp]	To [bp]	Average Size [bp]	Molarity [pmol/l]	Conc. [pg/μl]	Corr. Area	% of Total	Size distribution in CV [%]	Color
328	625	462	288.7	85.20	17.9	46	15.0	Blue

Assay Class: High Sensitivity DNA Assay  
 Data Path: C:\...ents and Settings\Bioanalyzer\2012-07-25\2012-07-25\_002.xad

Created: 7/25/2012 2:41:59 PM  
 Modified: 7/25/2012 3:10:50 PM

**Electropherogram Summary Continued ...**



**Overall Results for sample 2 : corn 13**

Number of peaks found: 6                      Corr. Area 1: 845.8  
 Noise: 0.2

**Peak table for sample 2 : corn 13**

Peak	Size [bp]	Conc. [pg/μl]	Molarity [pmol/l]	Observations
1	35	125.00	5,411.3	Lower Marker
2	340	387.68	1,726.9	
3	347	153.94	672.6	
4	358	186.75	790.0	
5	380	136.50	543.7	
6	463	93.63	306.4	
7	525	283.48	817.6	
8	10,380	75.00	10.9	Upper Marker

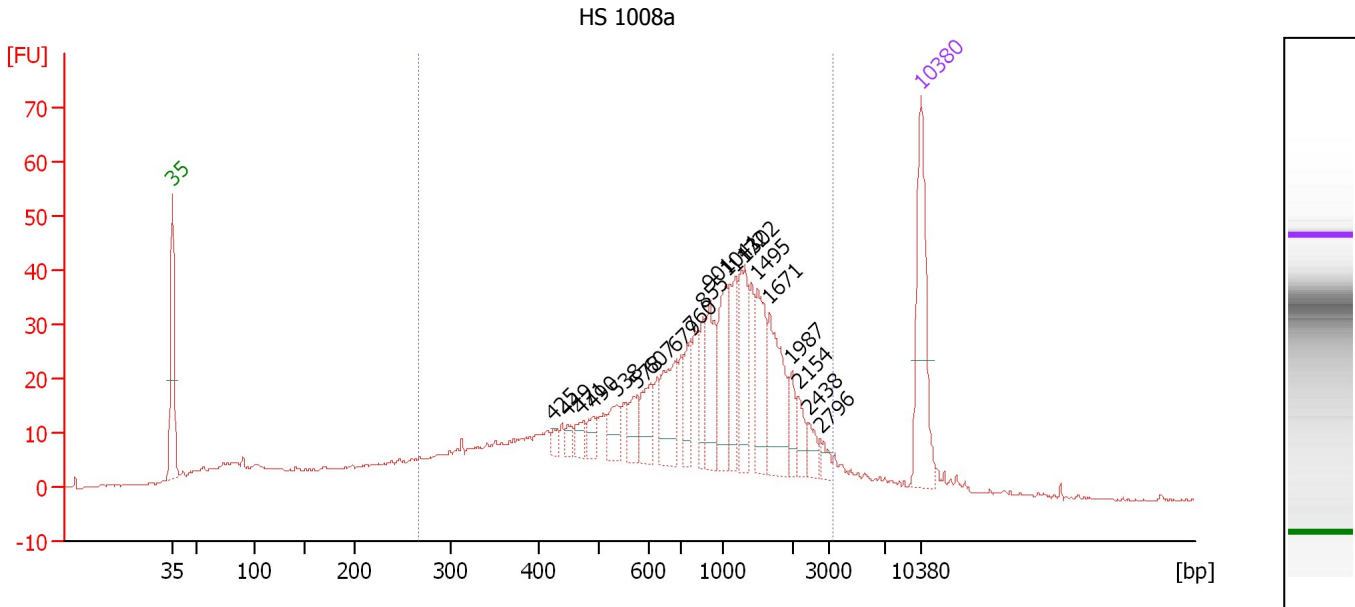
**Region table for sample 2 : corn 13**

From [bp]	To [bp]	Average Size [bp]	Molarity [pmol/l]	Conc. [pg/μl]	Corr. Area	% of Total	Size distribution in CV [%]	Color
290	595	417	6,988.0	1,849.54	845.8	87	17.8	Blue

Assay Class: High Sensitivity DNA Assay  
 Data Path: C:\...ents and Settings\Bioanalyzer\2012-07-25\2012-07-25\_002.xad

Created: 7/25/2012 2:41:59 PM  
 Modified: 7/25/2012 3:10:50 PM

**Electropherogram Summary Continued ...**



**Overall Results for sample 3 : HS 1008a**

Number of peaks found: 20      Corr. Area 1: 766.5  
 Noise: 0.2

**Peak table for sample 3 : HS 1008a**

Peak	Size [bp]	Conc. [pg/μl]	Molarity [pmol/l]	Observations
1	35	125.00	5,411.3	Lower Marker
2	425	6.83	24.3	
3	449	9.23	31.1	
4	471	12.10	38.9	
5	490	12.53	38.7	
6	538	22.46	63.3	
7	578	23.59	61.8	
8	607	30.40	75.8	
9	679	51.85	115.8	
10	760	23.58	47.0	
11	855	27.31	48.4	
12	901	42.99	72.3	
13	1,041	54.28	79.0	
14	1,172	31.63	40.9	
15	1,302	49.41	57.5	
16	1,495	47.72	48.4	
17	1,671	59.36	53.8	
18	1,987	15.63	11.9	
19	2,154	14.25	10.0	
20	2,438	11.41	7.1	
21	2,796	7.06	3.8	
22	10,380	75.00	10.9	Upper Marker

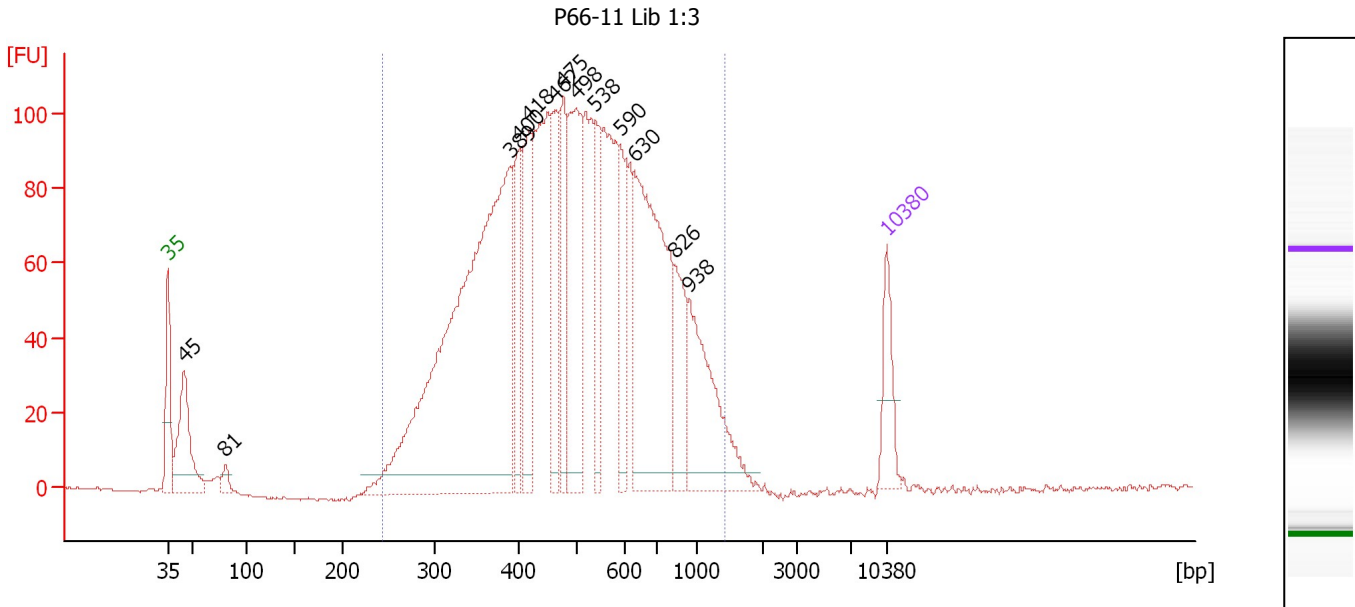
**Region table for sample 3 : HS 1008a**

From [bp]	To [bp]	Average Size [bp]	Molarity [pmol/l]	Conc. [pg/μl]	Corr. Area	% of Total	Size distribution in CV [%]	Color
266	3,350	1,001	2,681.7	1,117.19	766.5	82	60.6	Blue

Assay Class: High Sensitivity DNA Assay  
 Data Path: C:\...ents and Settings\Bioanalyzer\2012-07-25\2012-07-25\_002.xad

Created: 7/25/2012 2:41:59 PM  
 Modified: 7/25/2012 3:10:50 PM

**Electropherogram Summary Continued ...**



**Overall Results for sample 4 : P66-11 Lib 1:3**

Number of peaks found: 13                      Corr. Area 1: 2,632.7  
 Noise: 0.2

**Peak table for sample 4 : P66-11 Lib 1:3**

Peak	Size [bp]	Conc. [pg/μl]	Molarity [pmol/l]	Observations
1	35	125.00	5,411.3	Lower Marker
2	45	263.52	8,843.1	
3	81	29.38	552.2	
4	389	1,374.88	5,349.9	
5	400	154.08	583.1	
6	418	216.84	786.6	
7	462	189.01	619.3	
8	475	166.29	530.2	
9	498	332.69	1,012.0	
10	538	136.37	383.9	
11	590	143.60	368.7	
12	630	545.30	1,311.2	
13	826	134.81	247.2	
14	938	258.40	417.3	
15	10,380	75.00	10.9	Upper Marker

**Region table for sample 4 : P66-11 Lib 1:3**

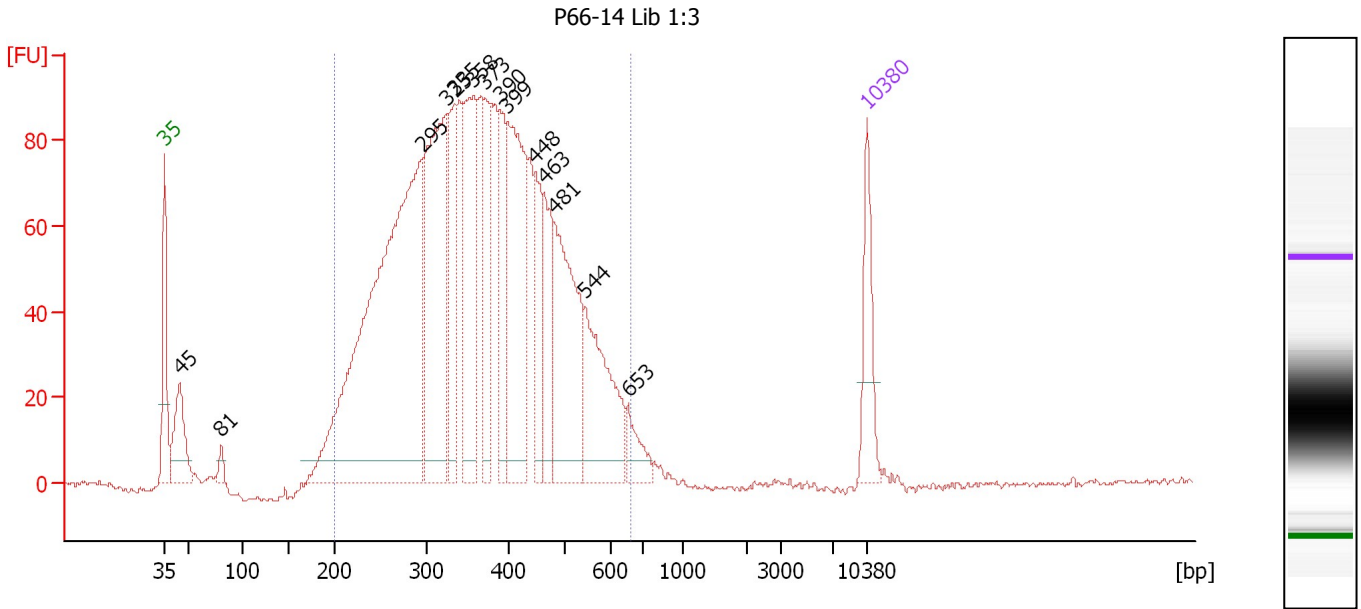
From [bp]	To [bp]	Average Size [bp]	Molarity [pmol/l]	Conc. [pg/μl]	Corr. Area	% of Total	Size distribution in CV [%]	Color
243	1,422	532	15,753.9	4,737.29	2,632.7	95	37.9	Blue



Assay Class: High Sensitivity DNA Assay  
 Data Path: C:\...ents and Settings\Bioanalyzer\2012-07-25\2012-07-25\_002.xad

Created: 7/25/2012 2:41:59 PM  
 Modified: 7/25/2012 3:10:50 PM

**Electropherogram Summary Continued ...**



**Overall Results for sample 5 : P66-14 Lib 1:3**

Number of peaks found: 14      Corr. Area 1: 2,364.1  
 Noise: 0.9

**Peak table for sample 5 : P66-14 Lib 1:3**

Peak	Size [bp]	Conc. [pg/μl]	Molarity [pmol/l]	Observations
1	35	125.00	5,411.3	Lower Marker
2	45	141.44	4,795.2	
3	81	20.44	383.3	
4	295	1,077.27	5,537.3	
5	325	438.97	2,047.3	
6	335	166.57	754.1	
7	358	253.28	1,073.3	
8	373	136.53	555.2	
9	390	117.37	455.7	
10	399	324.36	1,230.6	
11	448	97.61	330.4	
12	463	120.33	394.1	
13	481	280.71	883.7	
14	544	199.82	556.7	
15	653	42.91	99.6	
16	10,380	75.00	10.9	Upper Marker

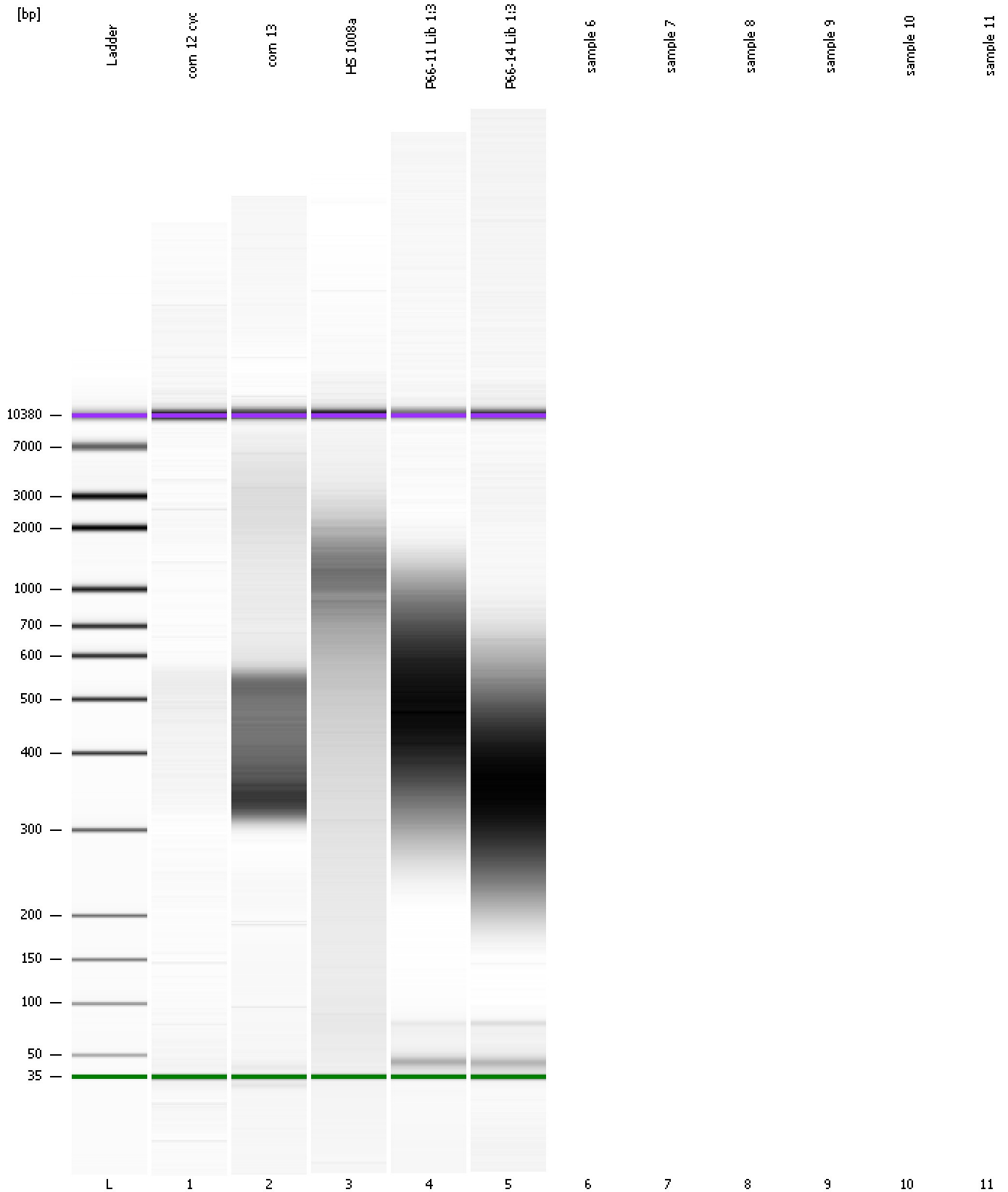
**Region table for sample 5 : P66-14 Lib 1:3**

From [bp]	To [bp]	Average Size [bp]	Molarity [pmol/l]	Conc. [pg/μl]	Corr. Area	% of Total	Size distribution in CV [%]	Color
200	659	374	17,084.4	3,828.00	2,364.1	94	26.3	Blue

Assay Class: High Sensitivity DNA Assay  
Data Path: C:\...ents and Settings\Bioanalyzer\2012-07-25\2012-07-25\_002.xad

Created: 7/25/2012 2:41:59 PM  
Modified: 7/25/2012 3:10:50 PM

**Gel Image**



Assay Class: High Sensitivity DNA Assay  
Data Path: C:\...ents and Settings\Bioanalyzer\2012-07-25\2012-07-25\_002.xad

Created: 7/25/2012 2:41:59 PM  
Modified: 7/25/2012 3:10:50 PM

**Invalid Samples**

Sample 6 has not been run, no results available.

Sample 7 has not been run, no results available.

Sample 8 has not been run, no results available.

Sample 9 has not been run, no results available.