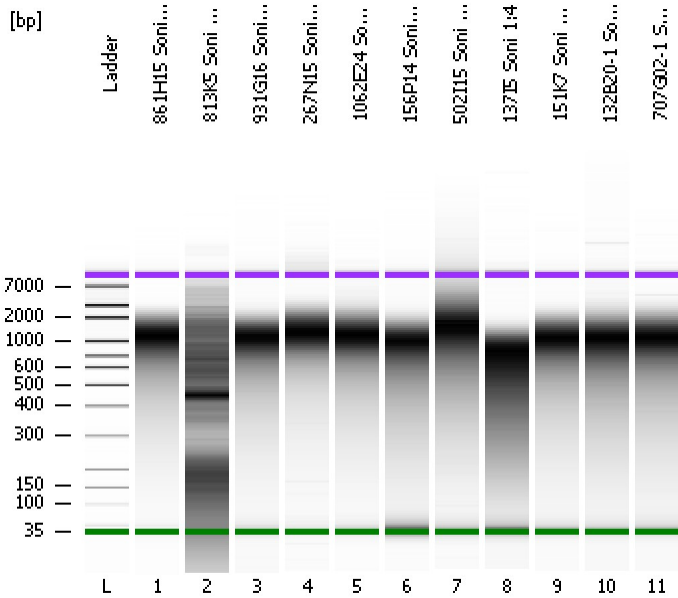


Assay Class: High Sensitivity DNA Assay
Data Path: C:\...ents and Settings\Bioanalyzer\2012-07-25\2012-07-25_003.xad

Created: 7/25/2012 3:58:04 PM
Modified: 7/25/2012 4:41:29 PM

Electrophoresis File Run Summary



Instrument Information:

Instrument Name: DE13701086 Firmware: C.01.069
Serial#: DE13701086 Type: G2938B

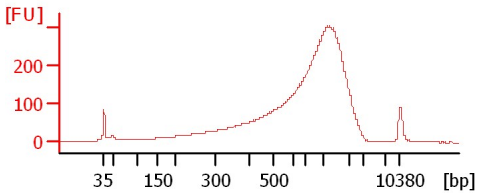
Assay Information:

Assay Origin Path: C:\Program Files\Agilent\2100 bioanalyzer\2100 expert\assays\dsDNA\High Sensitivity DNA.xsy
Assay Class: High Sensitivity DNA Assay
Version: 1.03
Assay Comments: Copyright © 2003-2010 Agilent Technologies

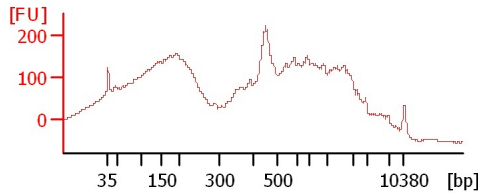
Chip Information:

Chip Lot #:
Reagent Kit Lot #:
Chip Comments:

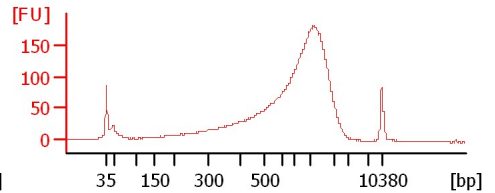
861H15 Soni 1:4



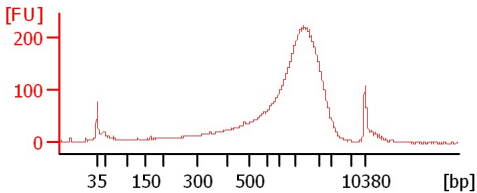
813K5 Soni 1:4



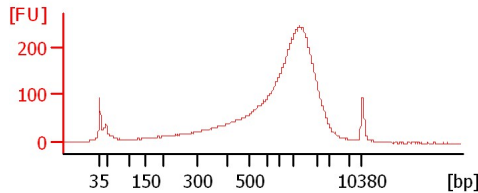
931G16 Soni 1:4



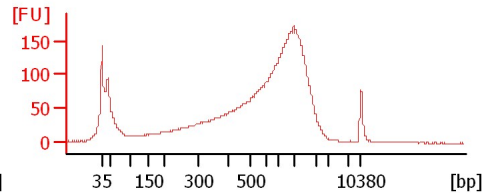
267N15 Soni 1:4



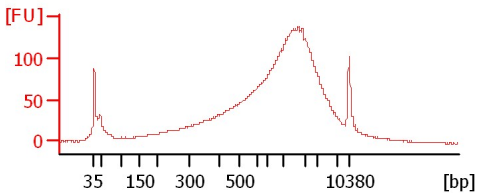
1062E24 Soni 1:4



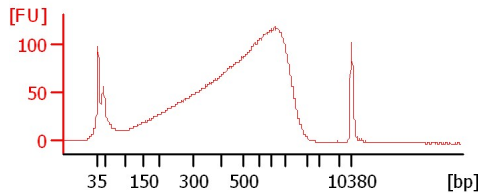
156P14 Soni 1:4



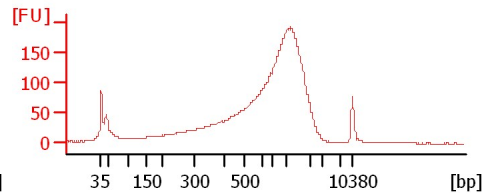
502I15 Soni 1:4



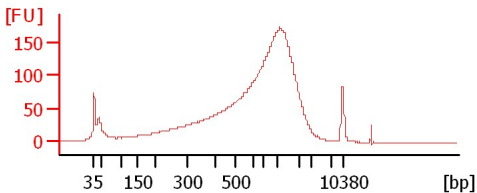
13715 Soni 1:4



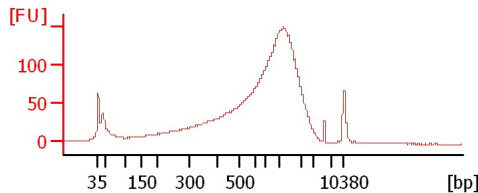
151K7 Soni 1:4



132B20-1 Soni 1:4



707G02-1 Soni 1:4



Assay Class: High Sensitivity DNA Assay
 Data Path: C:\...ents and Settings\Bioanalyzer\2012-07-25\2012-07-25_003.xad

Created: 7/25/2012 3:58:04 PM
 Modified: 7/25/2012 4:41:29 PM

Electrophoresis File Run Summary (Chip Summary)

Sample Name	Sample Comment	Rest. Digest	Status	Observation	Result Label	Result Color
861H15 Soni 1:4		<input type="checkbox"/>	✓			
813K5 Soni 1:4		<input type="checkbox"/>	✓			
931G16 Soni 1:4		<input type="checkbox"/>	✓			
267N15 Soni 1:4		<input type="checkbox"/>	✓			
1062E24 Soni 1:4		<input type="checkbox"/>	✓			
156P14 Soni 1:4		<input type="checkbox"/>	✓			
502I15 Soni 1:4		<input type="checkbox"/>	✓			
137I5 Soni 1:4		<input type="checkbox"/>	✓			
151K7 Soni 1:4		<input type="checkbox"/>	✓			
132B20-1 Soni 1:4		<input type="checkbox"/>	✓			
707G02-1 Soni 1:4		<input type="checkbox"/>	✓			
Ladder		<input type="checkbox"/>	✓			

Chip Lot #

Reagent Kit Lot #

Chip Comments :

Assay Class: High Sensitivity DNA Assay
Data Path: C:\...ents and Settings\Bioanalyzer\2012-07-25\2012-07-25_003.xad

Created: 7/25/2012 3:58:04 PM
Modified: 7/25/2012 4:41:29 PM

Electrophoresis Assay Details

General Analysis Settings

Number of Available Sample and Ladder Wells (Max.) : 12
Minimum Visible Range [s] : 32
Maximum Visible Range [s] : 138
Start Analysis Time Range [s] : 33
End Analysis Time Range [s] : 137.5
Ladder Concentration [pg/μl] : 1950
Uses Standard Area for Ladder Fragments
Lower Marker Concentration [pg/μl] : 125
Upper Marker Concentration [pg/μl] : 75
Used Upper Marker for Quantitation
Standard Curve Fit is Point to Point
Show Data Aligned to Lower and Upper Marker

Integrator Settings

Integration Start Time [s] : 33.05
Integration End Time [s] : 137
Slope Threshold : 0.8
Height Threshold [FU] : 5
Area Threshold : 0.1
Width Threshold [s] : 0.6
Baseline Plateau [s] : 0.5

Filter Settings

Filter Width [s] : 0.5
Polynomial Order : 4

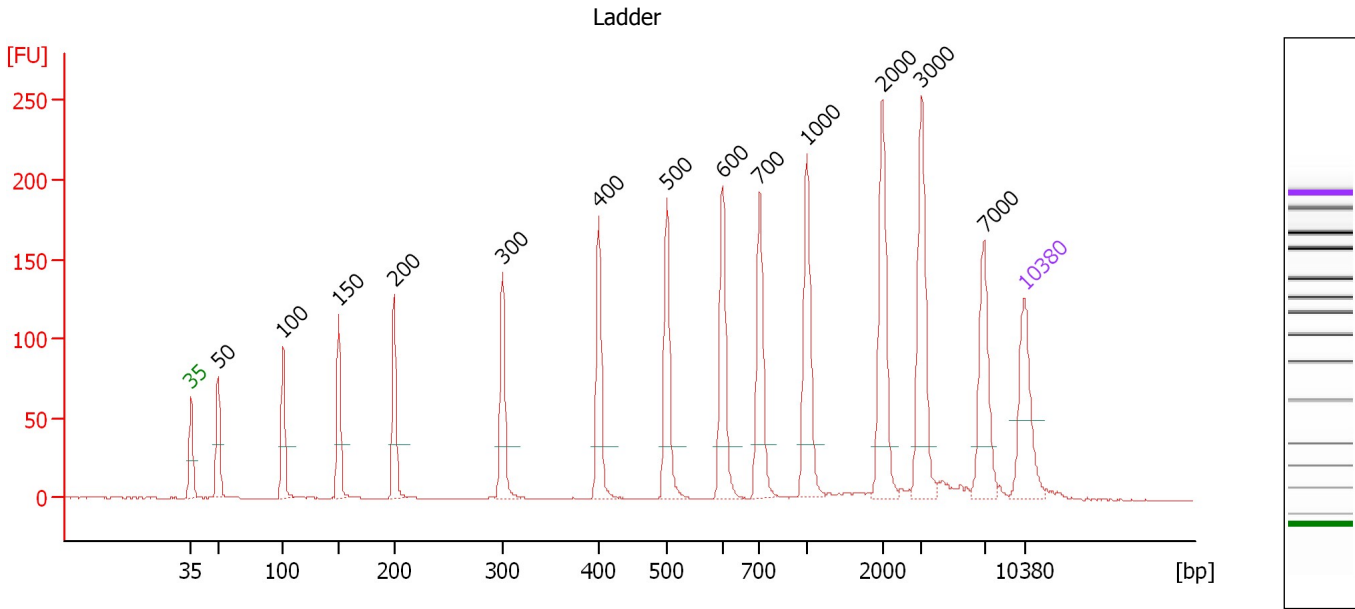
Ladder

Ladder Peak	Size	Area
1	35	160
2	50	210
3	100	208
4	150	221
5	200	242
6	300	270
7	400	305
8	500	306
9	600	336
10	700	321
11	1000	366
12	2000	413
13	3000	411
14	7000	400
15	10380	214

Assay Class: High Sensitivity DNA Assay
 Data Path: C:\...ents and Settings\Bioanalyzer\2012-07-25\2012-07-25_003.xad

Created: 7/25/2012 3:58:04 PM
 Modified: 7/25/2012 4:41:29 PM

Electropherogram Summary



Overall Results for Ladder

Noise: 0.1

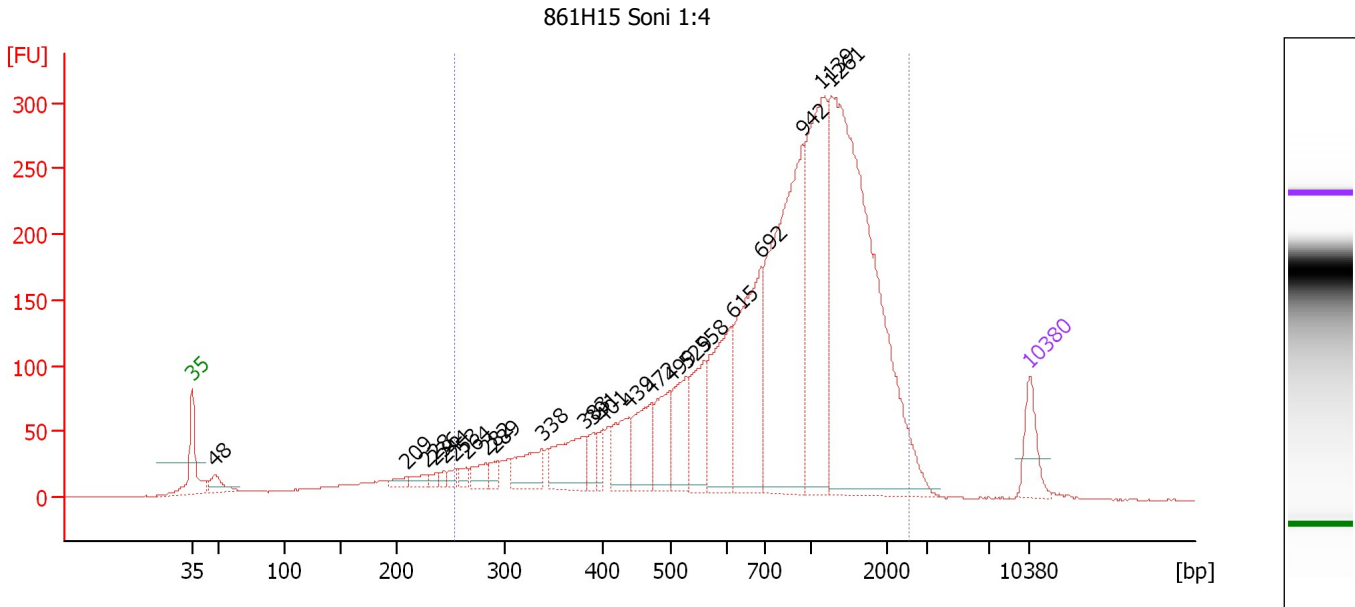
Peak table for Ladder

Peak	Size [bp]	Conc. [pg/μl]	Molarity [pmol/l]	Observations
1	35	125.00	5,411.3	Lower Marker
2	50	150.00	4,545.5	Ladder Peak
3	100	150.00	2,272.7	Ladder Peak
4	150	150.00	1,515.2	Ladder Peak
5	200	150.00	1,136.4	Ladder Peak
6	300	150.00	757.6	Ladder Peak
7	400	150.00	568.2	Ladder Peak
8	500	150.00	454.5	Ladder Peak
9	600	150.00	378.8	Ladder Peak
10	700	150.00	324.7	Ladder Peak
11	1,000	150.00	227.3	Ladder Peak
12	2,000	150.00	113.6	Ladder Peak
13	3,000	150.00	75.8	Ladder Peak
14	7,000	150.00	32.5	Ladder Peak
15	10,380	75.00	10.9	Upper Marker

Assay Class: High Sensitivity DNA Assay
 Data Path: C:\...ents and Settings\Bioanalyzer\2012-07-25\2012-07-25_003.xad

Created: 7/25/2012 3:58:04 PM
 Modified: 7/25/2012 4:41:29 PM

Electropherogram Summary Continued ...



Overall Results for sample 1 : 861H15 Soni 1:4

Number of peaks found: 23 Corr. Area 1: 5,094.5
 Noise: 0.3

Peak table for sample 1 : 861H15 Soni 1:4

Peak	Size [bp]	Conc. [pg/μl]	Molarity [pmol/l]	Observations
1	35	125.00	5,411.3	Lower Marker
2	48	66.42	2,117.2	
3	209	21.98	159.3	
4	228	28.00	186.3	
5	236	16.89	108.6	
6	244	15.43	95.9	
7	253	23.05	137.9	
8	264	23.78	136.6	
9	282	48.99	263.3	
10	289	26.89	140.8	
11	338	118.56	531.7	
12	383	169.40	670.9	
13	391	48.13	186.5	
14	401	37.84	143.0	
15	439	126.50	436.4	
16	472	152.76	490.6	
17	499	139.50	423.7	
18	529	151.99	435.3	
19	558	166.15	450.9	
20	615	284.03	699.4	
21	692	432.18	945.7	
22	942	745.11	1,197.9	
23	1,139	545.95	726.0	
24	1,261	1,242.15	1,492.1	
25	10,380	75.00	10.9	Upper Marker

Assay Class: High Sensitivity DNA Assay
Data Path: C:\...ents and Settings\Bioanalyzer\2012-07-25\2012-07-25_003.xad

Created: 7/25/2012 3:58:04 PM
Modified: 7/25/2012 4:41:29 PM

Electropherogram Summary Continued ...

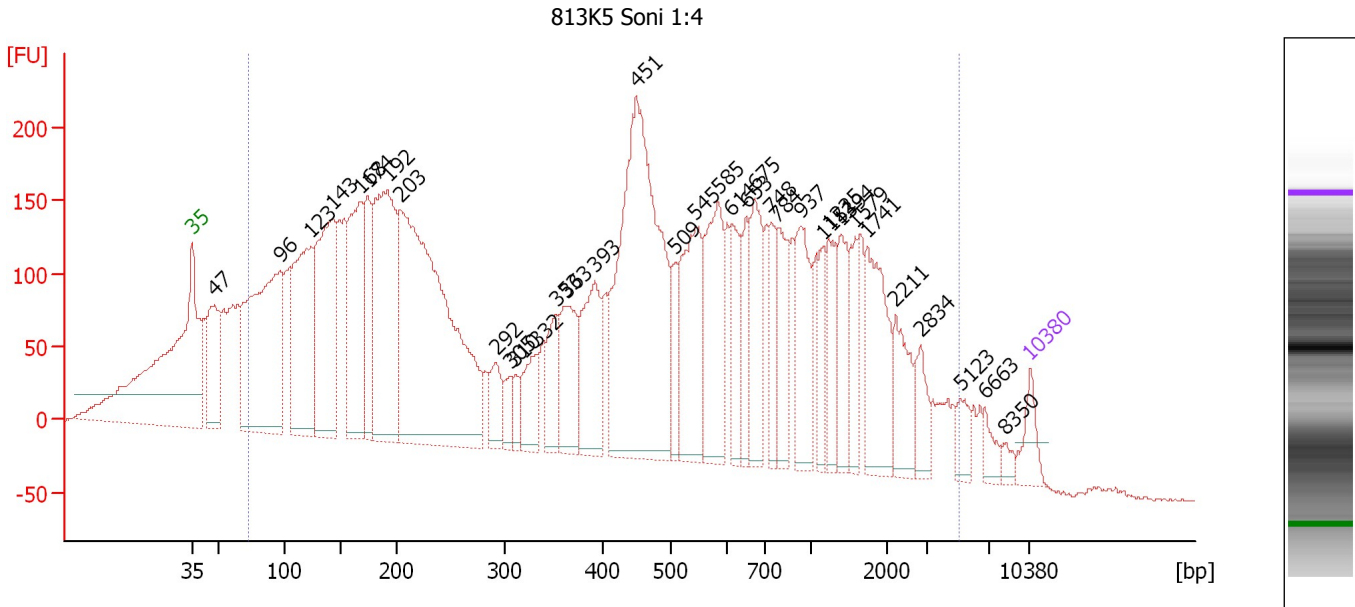
... Region table for sample 1 : **861H15 Soni 1:4**

From [bp]	To [bp]	Average Size [bp]	Molarity [pmol/l]	Conc. [pg/μl]	Corr. Area	% of Total	Size distribution in CV [%]	Color
254	2,558	979	11,155.7	4,865.34	5,094.5	91	52.0	■

Assay Class: High Sensitivity DNA Assay
 Data Path: C:\...ents and Settings\Bioanalyzer\2012-07-25\2012-07-25_003.xad

Created: 7/25/2012 3:58:04 PM
 Modified: 7/25/2012 4:41:29 PM

Electropherogram Summary Continued ...



Overall Results for sample 2 : 813K5 Soni 1:4

Number of peaks found: 35 Corr. Area 1: 10,339.2
 Noise: 1.1

Peak table for sample 2 : 813K5 Soni 1:4

Peak	Size [bp]	Conc. [pg/μl]	Molarity [pmol/l]	Observations
1	35	125.00	5,411.3	Lower Marker
2	47	449.55	14,413.4	
3	96	1,361.70	21,383.0	
4	123	874.64	10,743.0	
5	143	903.61	9,586.8	
6	168	652.95	5,891.4	
7	174	368.14	3,206.3	
8	192	983.08	7,753.8	
9	203	2,064.17	15,426.0	
10	292	137.75	716.0	
11	305	76.77	381.4	
12	310	68.57	334.9	
13	332	176.80	806.1	
14	353	193.21	830.0	
15	363	295.73	1,235.7	
16	393	353.70	1,364.1	
17	451	1,488.90	5,007.3	
18	509	126.13	375.7	
19	545	439.84	1,223.1	
20	585	415.33	1,075.4	
21	614	212.62	524.8	
22	653	146.53	340.1	
23	675	275.28	617.7	
24	748	142.95	289.5	
25	784	222.02	429.2	
26	937	275.35	445.1	

Assay Class: High Sensitivity DNA Assay
 Data Path: C:\...ents and Settings\Bioanalyzer\2012-07-25\2012-07-25_003.xad


Created: 7/25/2012 3:58:04 PM
 Modified: 7/25/2012 4:41:29 PM

Electropherogram Summary Continued ...

... Peak table for sample 2 : 813K5 Soni 1:4

Peak	Size [bp]	Conc. [pg/µl]	Molarity [pmol/l]	Observations
27	1,151	124.55	164.0	
28	1,225	143.82	177.9	
29	1,394	171.46	186.3	
30	1,579	120.49	115.6	
31	1,741	304.33	264.8	
32	2,211	159.54	109.3	
33	2,834	93.15	49.8	
34	5,123	61.39	18.2	
35	6,663	47.76	10.9	
36	8,350	26.13	4.7	
37	▶ 10,380	75.00	10.9	Upper Marker

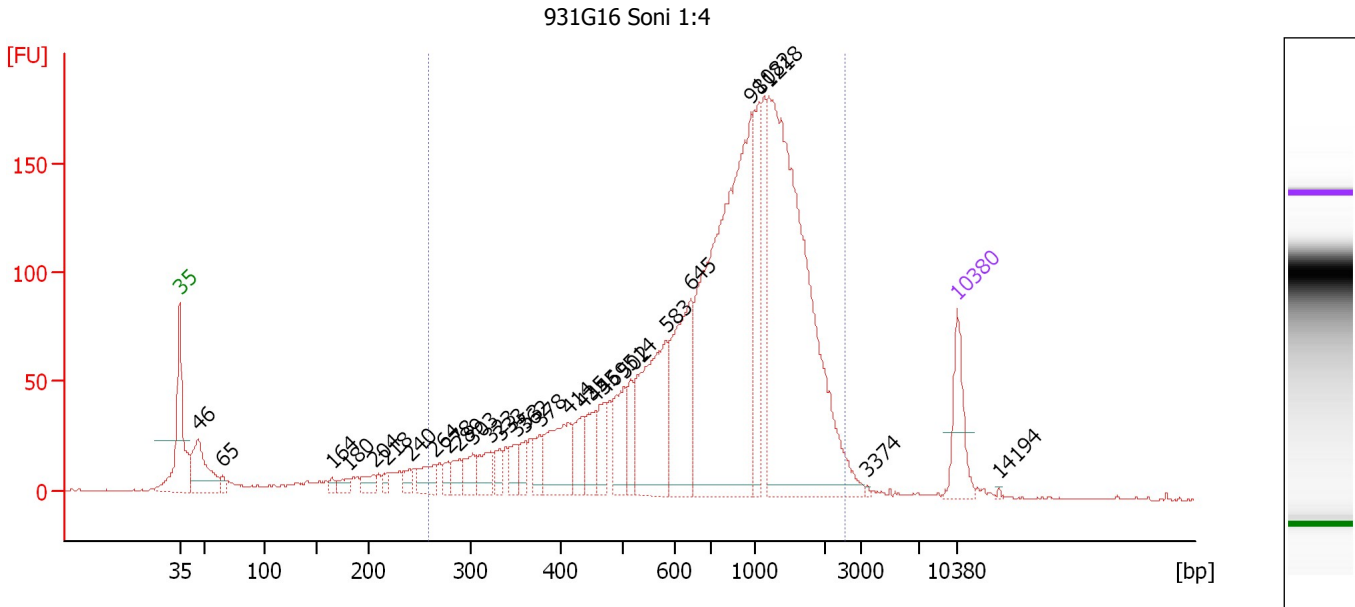
Region table for sample 2 : 813K5 Soni 1:4

From [bp]	To [bp]	Average Size [bp]	Molarity [pmol/l]	Conc. [pg/µl]	Corr. Area	% of Total	Size distribution in CV [%]	Color
73	5,064	688	96,337.3	14,342.94	10,339.2	92	100.0	

Assay Class: High Sensitivity DNA Assay
 Data Path: C:\...ents and Settings\Bioanalyzer\2012-07-25\2012-07-25_003.xad

Created: 7/25/2012 3:58:04 PM
 Modified: 7/25/2012 4:41:29 PM

Electropherogram Summary Continued ...



Overall Results for sample 3 : 931G16 Soni 1:4

Number of peaks found: 29 Corr. Area 1: 2,894.5
 Noise: 0.3

Peak table for sample 3 : 931G16 Soni 1:4

Peak	Size [bp]	Conc. [pg/μl]	Molarity [pmol/l]	Observations
1	35	125.00	5,411.3	Lower Marker
2	46	166.77	5,463.5	
3	65	18.16	425.6	
4	164	11.72	108.2	
5	180	24.10	203.3	
6	204	30.98	229.6	
7	218	16.30	113.5	
8	240	20.37	128.4	
9	264	50.06	287.2	
10	278	20.40	111.0	
11	289	34.70	181.7	
12	303	45.88	229.5	
13	323	56.24	263.7	
14	333	29.11	132.3	
15	353	37.10	159.3	
16	362	27.85	116.6	
17	378	38.89	155.9	
18	414	133.20	487.4	
19	435	66.26	230.8	
20	455	58.89	196.1	
21	469	57.60	185.9	
22	502	95.25	287.2	
23	514	50.16	147.9	
24	583	269.03	699.4	
25	645	248.17	583.1	
26	981	828.26	1,279.1	

Assay Class: High Sensitivity DNA Assay
 Data Path: C:\...ents and Settings\Bioanalyzer\2012-07-25\2012-07-25_003.xad


Created: 7/25/2012 3:58:04 PM
 Modified: 7/25/2012 4:41:29 PM

Electropherogram Summary Continued ...

... Peak table for sample 3 : 931G16 Soni 1:4

Peak	Size [bp]	Conc. [pg/μl]	Molarity [pmol/l]	Observations
27	1,082	126.75	177.5	
28	1,218	856.94	1,066.4	
29	3,374	2.60	1.2	
30	10,380	75.00	10.9	Upper Marker
31	14,194	0.00	0.0	

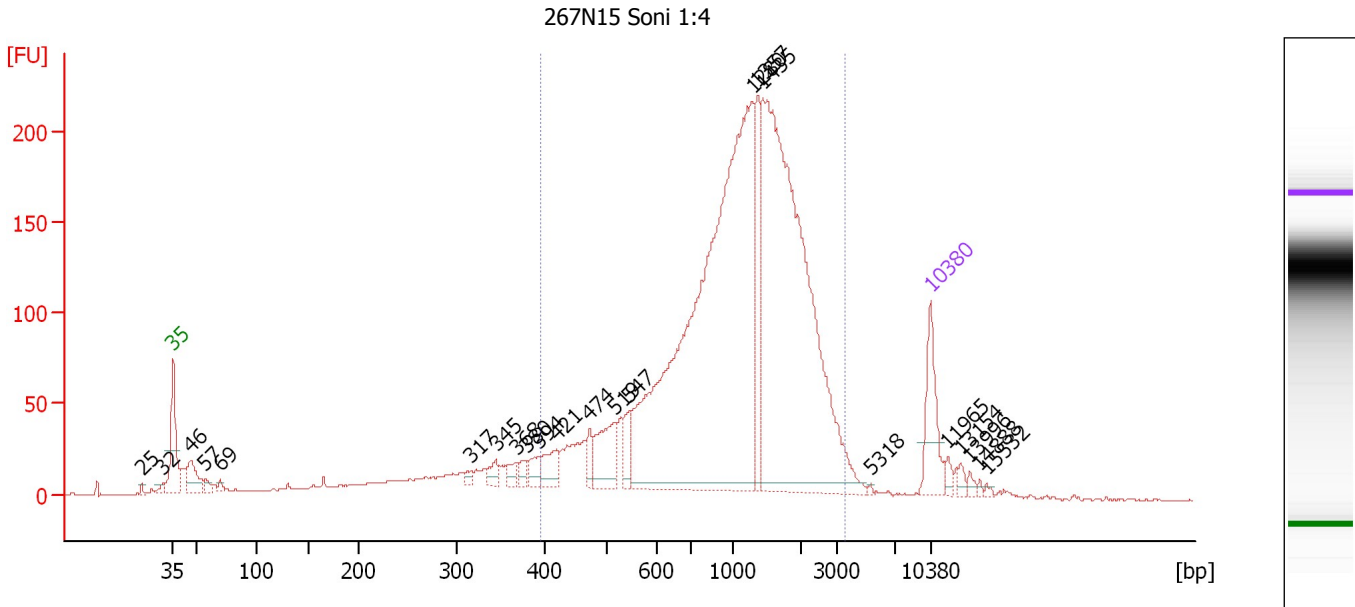
Region table for sample 3 : 931G16 Soni 1:4

From [bp]	To [bp]	Average Size [bp]	Molarity [pmol/l]	Conc. [pg/μl]	Corr. Area	% of Total	Size distribution in CV [%]	Color
259	2,564	951	7,660.0	3,343.19	2,894.5	90	50.7	

Assay Class: High Sensitivity DNA Assay
 Data Path: C:\...ents and Settings\Bioanalyzer\2012-07-25\2012-07-25_003.xad

Created: 7/25/2012 3:58:04 PM
 Modified: 7/25/2012 4:41:29 PM

Electropherogram Summary Continued ...



Overall Results for sample 4 : 267N15 Soni 1:4

Number of peaks found: 23 Corr. Area 1: 2,990.7
 Noise: 0.3

Peak table for sample 4 : 267N15 Soni 1:4

Peak	Size [bp]	Conc. [pg/μl]	Molarity [pmol/l]	Observations
1	25	0.00	0.0	
2	32	0.00	0.0	
3	35	125.00	5,411.3	Lower Marker
4	46	72.12	2,364.5	
5	57	14.89	399.0	
6	69	9.64	211.2	
7	317	9.71	46.4	
8	345	20.89	91.7	
9	368	18.72	77.0	
10	380	15.92	63.5	
11	394	25.15	96.8	
12	421	42.71	153.9	
13	474	26.64	85.2	
14	519	85.57	250.0	
15	547	36.81	102.0	
16	1,280	1,150.37	1,361.7	
17	1,357	121.62	135.8	
18	1,435	885.80	935.4	
19	5,318	1.76	0.5	
20	10,380	75.00	10.9	Upper Marker
21	11,965	0.00	0.0	
22	13,154	0.00	0.0	
23	13,996	0.00	0.0	
24	14,888	0.00	0.0	
25	15,532	0.00	0.0	

Assay Class: High Sensitivity DNA Assay
Data Path: C:\...ents and Settings\Bioanalyzer\2012-07-25\2012-07-25_003.xad

Created: 7/25/2012 3:58:04 PM
Modified: 7/25/2012 4:41:29 PM

Electropherogram Summary Continued ...

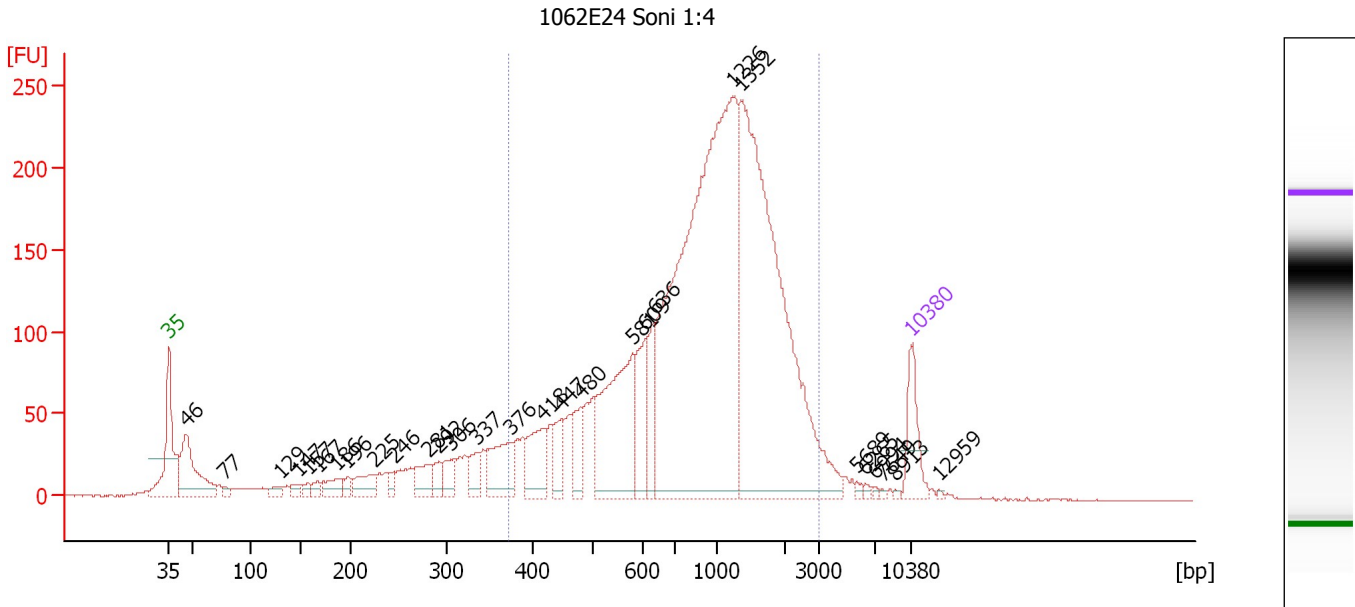
... Region table for sample 4 : 267N15 Soni 1:4

From [bp]	To [bp]	Average Size [bp]	Molarity [pmol/l]	Conc. [pg/μl]	Corr. Area	% of Total	Size distribution in CV [%]	Color
395	3,464	1,250	4,415.6	2,668.54	2,990.7	83	48.9	■

Assay Class: High Sensitivity DNA Assay
 Data Path: C:\...ents and Settings\Bioanalyzer\2012-07-25\2012-07-25_003.xad

Created: 7/25/2012 3:58:04 PM
 Modified: 7/25/2012 4:41:29 PM

Electropherogram Summary Continued ...



Overall Results for sample 5 : 1062E24 Soni 1:4

Number of peaks found: 29 Corr. Area 1: 3,660.5
 Noise: 0.3

Peak table for sample 5 : 1062E24 Soni 1:4

Peak	Size [bp]	Conc. [pg/μl]	Molarity [pmol/l]	Observations
1	35	125.00	5,411.3	Lower Marker
2	46	236.93	7,842.8	
3	77	12.46	244.1	
4	129	22.79	267.2	
5	147	18.83	193.6	
6	157	18.21	175.7	
7	167	21.62	195.8	
8	186	47.95	391.3	
9	196	18.82	145.1	
10	225	59.29	400.0	
11	246	20.69	127.6	
12	281	61.33	330.7	
13	292	36.76	190.7	
14	306	50.22	248.7	
15	337	48.47	218.2	
16	376	124.82	503.3	
17	418	107.70	390.7	
18	447	57.88	196.0	
19	480	76.07	240.2	
20	581	331.29	863.9	
21	609	117.79	293.2	
22	636	83.06	197.9	
23	1,226	1,339.32	1,655.2	
24	1,352	1,002.31	1,122.9	
25	5,689	5.39	1.4	
26	6,265	5.01	1.2	

Assay Class: High Sensitivity DNA Assay
 Data Path: C:\...ents and Settings\Bioanalyzer\2012-07-25\2012-07-25_003.xad


Created: 7/25/2012 3:58:04 PM
 Modified: 7/25/2012 4:41:29 PM

Electropherogram Summary Continued ...

... Peak table for sample 5 : 1062E24 Soni 1:4

Peak	Size [bp]	Conc. [pg/μl]	Molarity [pmol/l]	Observations
27	6,994	3.81	0.8	
28	7,649	2.87	0.6	
29	8,913	2.61	0.4	
30	10,380	75.00	10.9	Upper Marker
31	12,959	0.00	0.0	

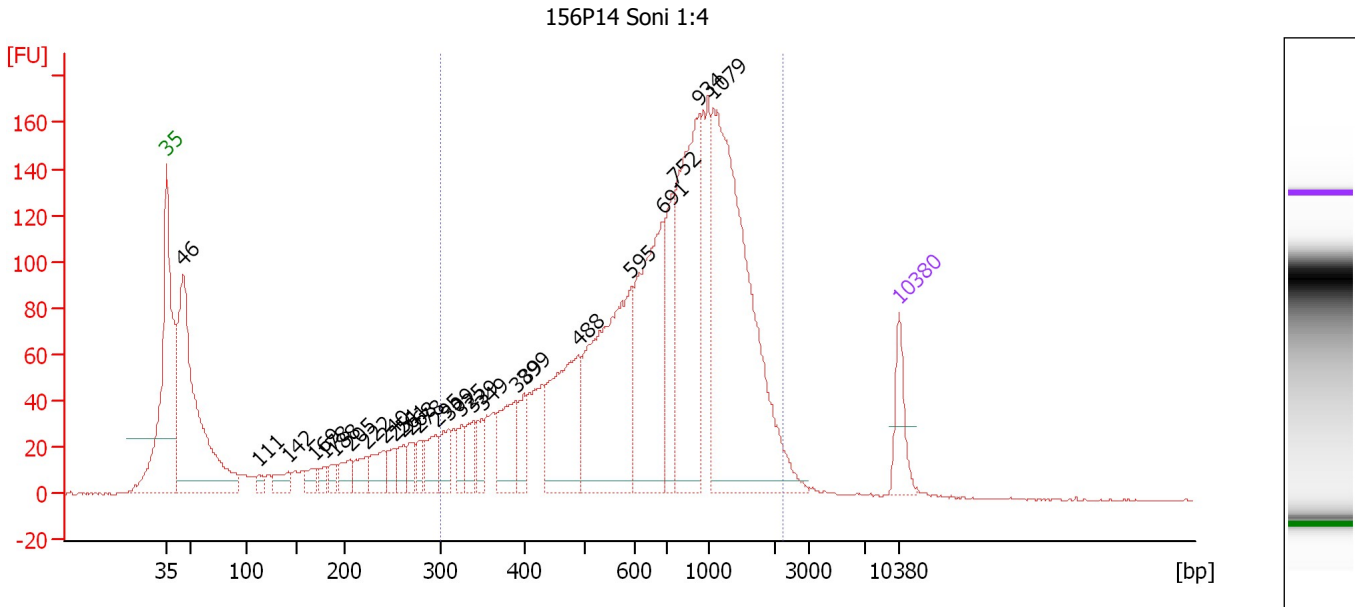
Region table for sample 5 : 1062E24 Soni 1:4

From [bp]	To [bp]	Average Size [bp]	Molarity [pmol/l]	Conc. [pg/μl]	Corr. Area	% of Total	Size distribution in CV [%]	Color
372	3,000	1,101	6,538.2	3,450.00	3,660.5	81	51.0	

Assay Class: High Sensitivity DNA Assay
 Data Path: C:\...ents and Settings\Bioanalyzer\2012-07-25\2012-07-25_003.xad

Created: 7/25/2012 3:58:04 PM
 Modified: 7/25/2012 4:41:29 PM

Electropherogram Summary Continued ...



Overall Results for sample 6 : 156P14 Soni 1:4

Number of peaks found: 26 Corr. Area 1: 2,962.8
 Noise: 0.2

Peak table for sample 6 : 156P14 Soni 1:4

Peak	Size [bp]	Conc. [pg/μl]	Molarity [pmol/l]	Observations
1	35	125.00	5,411.3	Lower Marker
2	46	1,013.85	33,707.4	
3	111	26.36	359.2	
4	142	56.65	606.5	
5	169	39.75	355.7	
6	178	28.63	243.6	
7	188	34.05	273.8	
8	205	61.37	453.7	
9	222	62.70	428.4	
10	240	78.74	496.6	
11	251	44.83	270.8	
12	261	49.19	285.6	
13	268	37.12	209.6	
14	278	38.11	207.9	
15	295	83.86	430.5	
16	309	73.74	361.5	
17	325	43.40	202.4	
18	339	57.74	258.3	
19	349	48.82	212.1	
20	389	150.37	585.3	
21	399	68.90	261.8	
22	488	334.45	1,038.7	
23	595	552.39	1,405.5	
24	691	483.64	1,060.9	
25	752	183.16	369.3	
26	934	495.02	803.3	

Assay Class: High Sensitivity DNA Assay
 Data Path: C:\...ents and Settings\Bioanalyzer\2012-07-25\2012-07-25_003.xad


Created: 7/25/2012 3:58:04 PM
 Modified: 7/25/2012 4:41:29 PM

Electropherogram Summary Continued ...

... Peak table for sample 6 : 156P14 Soni 1:4

Peak	Size [bp]	Conc. [pg/μl]	Molarity [pmol/l]	Observations
27	1,079	897.46	1,260.0	
28	10,380	75.00	10.9	Upper Marker

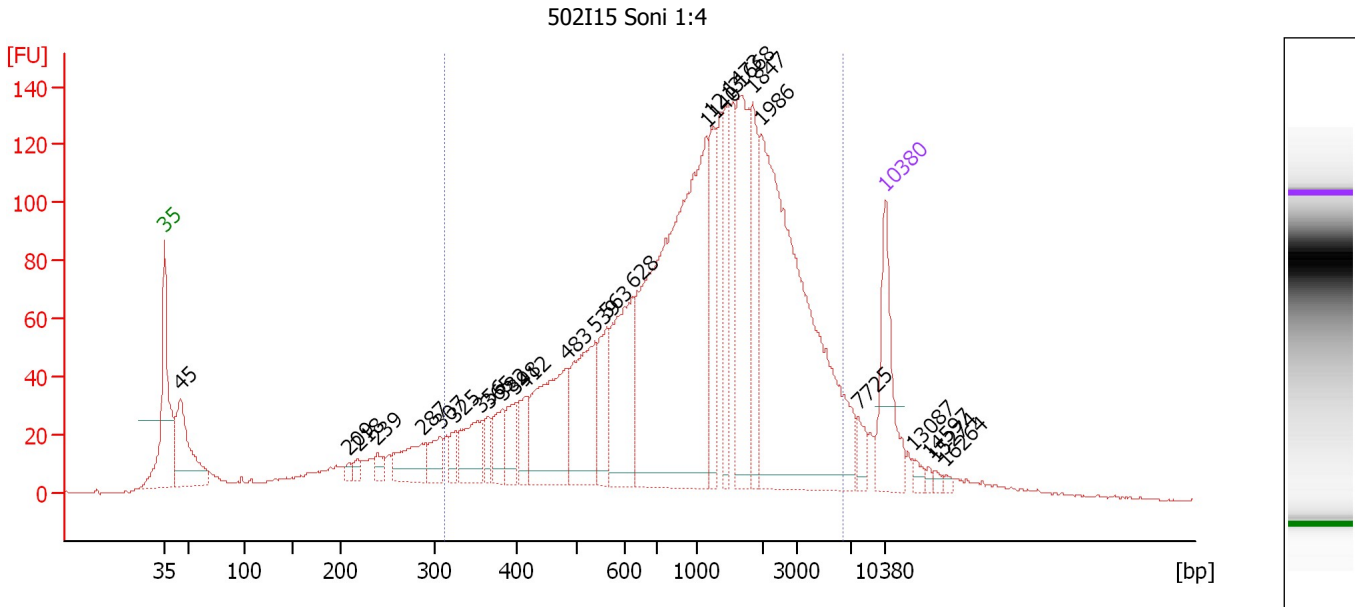
Region table for sample 6 : 156P14 Soni 1:4

From [bp]	To [bp]	Average Size [bp]	Molarity [pmol/l]	Conc. [pg/μl]	Corr. Area	% of Total	Size distribution in CV [%]	Color
299	2,231	843	9,815.1	4,036.01	2,962.8	74	49.6	

Assay Class: High Sensitivity DNA Assay
 Data Path: C:\...ents and Settings\Bioanalyzer\2012-07-25\2012-07-25_003.xad

Created: 7/25/2012 3:58:04 PM
 Modified: 7/25/2012 4:41:29 PM

Electropherogram Summary Continued ...



Overall Results for sample 7 : 502I15 Soni 1:4

Number of peaks found: 27 Corr. Area 1: 2,901.5
 Noise: 0.4

Peak table for sample 7 : 502I15 Soni 1:4

Peak	Size [bp]	Conc. [pg/μl]	Molarity [pmol/l]	Observations
1	35	125.00	5,411.3	Lower Marker
2	45	147.36	4,918.0	
3	209	7.03	51.0	
4	218	10.25	71.1	
5	239	14.01	88.7	
6	287	58.16	306.8	
7	307	32.89	162.1	
8	325	18.70	87.1	
9	356	62.77	267.0	
10	365	19.39	80.5	
11	382	37.22	147.4	
12	398	40.10	152.7	
13	412	32.06	117.8	
14	483	154.57	485.1	
15	539	125.47	352.8	
16	563	56.53	152.1	
17	628	138.17	333.4	
18	1,140	500.12	665.0	
19	1,213	78.54	98.1	
20	1,473	64.94	66.8	
21	1,668	136.27	123.8	
22	1,847	76.89	63.1	
23	1,986	432.53	330.0	
24	7,725	15.34	3.0	
25	10,380	75.00	10.9	Upper Marker
26	13,087	0.00	0.0	


Assay Class: High Sensitivity DNA Assay
Data Path: C:\...ents and Settings\Bioanalyzer\2012-07-25\2012-07-25_003.xad

Created: 7/25/2012 3:58:04 PM
Modified: 7/25/2012 4:41:29 PM

Electropherogram Summary Continued ...**... Peak table for sample 7 : 502I15 Soni 1:4**

Peak	Size [bp]	Conc. [pg/ μ l]	Molarity [pmol/l]	Observations
27	14,597	0.00	0.0	
28	15,274	0.00	0.0	
29	16,264	0.00	0.0	

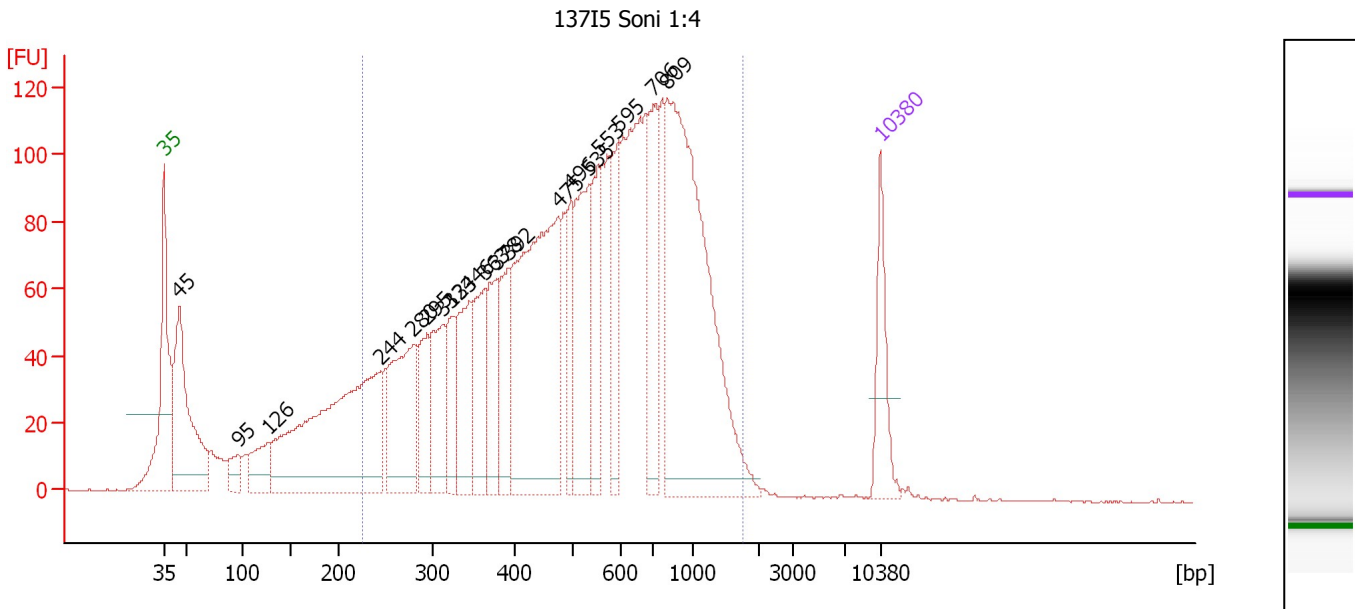
Region table for sample 7 : 502I15 Soni 1:4

From [bp]	To [bp]	Average Size [bp]	Molarity [pmol/l]	Conc. [pg/ μ l]	Corr. Area	% of Total	Size distribution in CV [%]	Color
314	6,444	1,486	4,429.5	2,280.49	2,901.5	81	81.3	

Assay Class: High Sensitivity DNA Assay
 Data Path: C:\...ents and Settings\Bioanalyzer\2012-07-25\2012-07-25_003.xad

Created: 7/25/2012 3:58:04 PM
 Modified: 7/25/2012 4:41:29 PM

Electropherogram Summary Continued ...



Overall Results for sample 8 : 13715 Soni 1:4

Number of peaks found: 19 Corr. Area 1: 3,257.3
 Noise: 0.2

Peak table for sample 8 : 13715 Soni 1:4

Peak	Size [bp]	Conc. [pg/μl]	Molarity [pmol/l]	Observations
1	35	125.00	5,411.3	Lower Marker
2	45	375.02	12,691.9	
3	95	43.55	692.5	
4	126	81.85	987.8	
5	244	591.52	3,667.8	
6	280	233.96	1,266.6	
7	295	100.80	518.1	
8	313	140.29	678.0	
9	324	87.31	408.5	
10	346	146.46	641.7	
11	363	131.17	547.1	
12	378	113.63	455.3	
13	392	109.77	423.9	
14	475	516.49	1,648.8	
15	496	87.67	267.6	
16	535	197.62	560.0	
17	553	108.74	298.1	
18	595	110.11	280.3	
19	706	159.48	342.4	
20	809	632.43	1,184.7	
21	10,380	75.00	10.9	Upper Marker

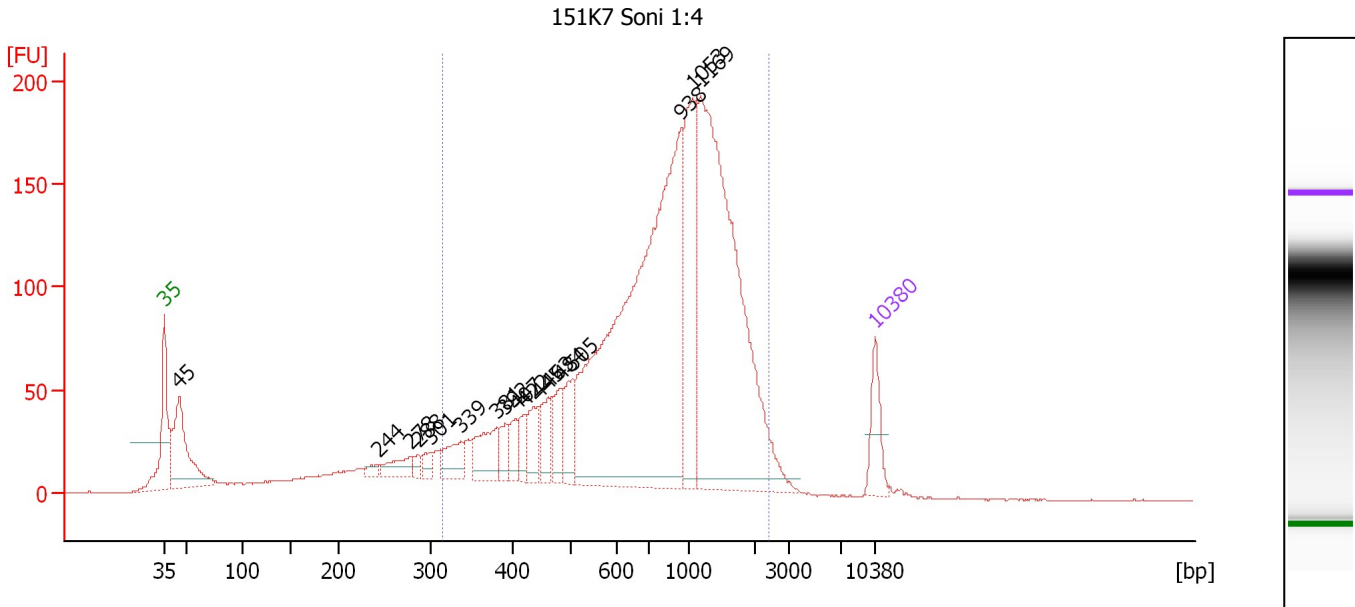
Region table for sample 8 : 13715 Soni 1:4

From [bp]	To [bp]	Average Size [bp]	Molarity [pmol/l]	Conc. [pg/μl]	Corr. Area	% of Total	Size distribution in CV [%]	Color
226	1,773	599	12,473.7	3,722.49	3,257.3	81	48.1	Blue

Assay Class: High Sensitivity DNA Assay
 Data Path: C:\...ents and Settings\Bioanalyzer\2012-07-25\2012-07-25_003.xad

Created: 7/25/2012 3:58:04 PM
 Modified: 7/25/2012 4:41:29 PM

Electropherogram Summary Continued ...



Overall Results for sample 9 : 151K7 Soni 1:4

Number of peaks found: 17 Corr. Area 1: 3,016.2
 Noise: 0.2

Peak table for sample 9 : 151K7 Soni 1:4

Peak	Size [bp]	Conc. [pg/μl]	Molarity [pmol/l]	Observations
1	35	125.00	5,411.3	Lower Marker
2	45	375.02	12,673.2	
3	244	20.09	124.6	
4	278	61.49	334.9	
5	288	22.55	118.6	
6	301	30.70	154.6	
7	339	86.14	385.5	
8	381	126.81	503.7	
9	392	50.99	197.1	
10	407	50.96	189.8	
11	422	45.11	162.2	
12	445	84.39	287.1	
13	463	81.20	265.9	
14	484	80.73	252.9	
15	505	96.93	291.0	
16	938	1,462.05	2,361.9	
17	1,053	331.11	476.4	
18	1,169	1,110.90	1,440.4	
19	10,380	75.00	10.9	Upper Marker

Region table for sample 9 : 151K7 Soni 1:4

From [bp]	To [bp]	Average Size [bp]	Molarity [pmol/l]	Conc. [pg/μl]	Corr. Area	% of Total	Size distribution in CV [%]	Color
317	2,442	950	8,915.3	4,080.91	3,016.2	82	49.5	Blue

Assay Class: High Sensitivity DNA Assay
Data Path: C:\...ents and Settings\Bioanalyzer\2012-07-25\2012-07-25_003.xad

Created: 7/25/2012 3:58:04 PM
Modified: 7/25/2012 4:41:29 PM

Gel Image

