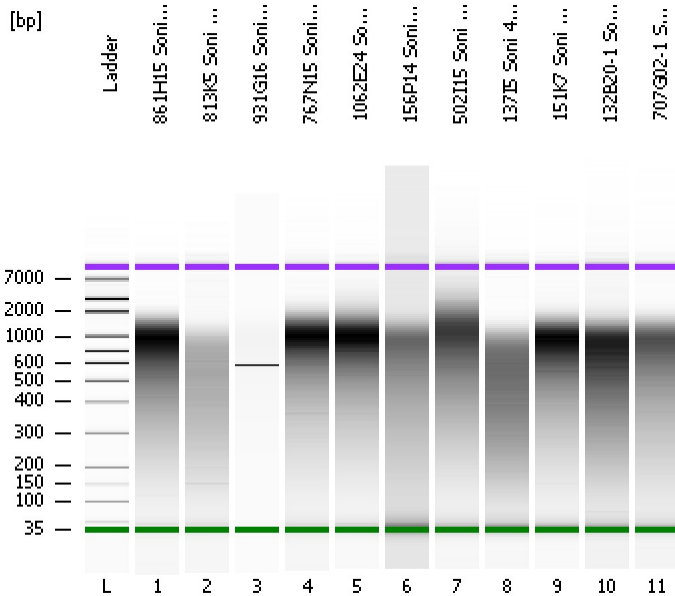


Assay Class: High Sensitivity DNA Assay
Data Path: C:\...ents and Settings\Bioanalyzer\2012-07-26\2012-07-26_001.xad

Created: 7/26/2012 9:50:44 AM
Modified: 7/26/2012 10:37:29 AM

Electrophoresis File Run Summary



Instrument Information:

Instrument Name: DE13701086 Firmware: C.01.069
Serial#: DE13701086 Type: G2938B

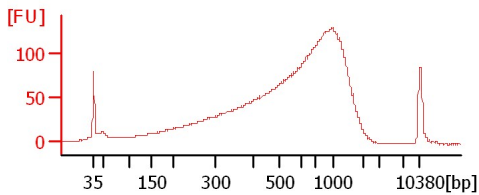
Assay Information:

Assay Origin Path: C:\Program Files\Agilent\2100 bioanalyzer\2100 expert\assays\dsDNA\High Sensitivity DNA.xsy
Assay Class: High Sensitivity DNA Assay
Version: 1.03
Assay Comments: Copyright © 2003-2010 Agilent Technologies

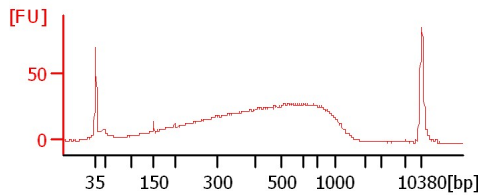
Chip Information:

Chip Lot #:
Reagent Kit Lot #:
Chip Comments:

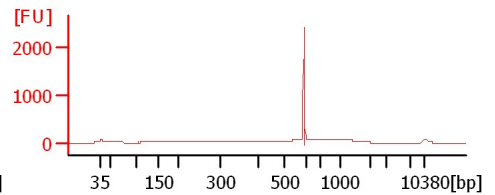
861H15 Soni 4+3Cycles 1:6



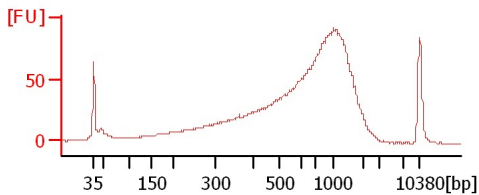
813K5 Soni 4+2Cycles 1:6



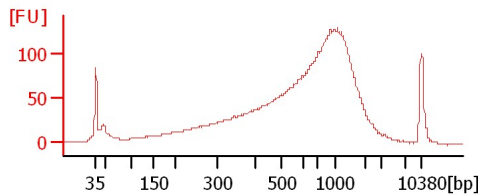
931G16 Soni 4+3Cycles 1:6



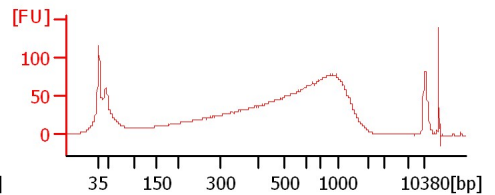
767N15 Soni 4+3Cycles 1:6



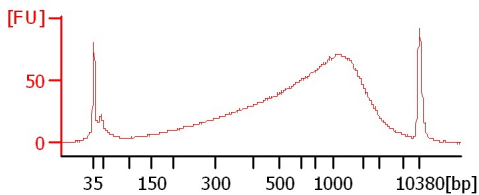
1062E24 Soni 4+3Cycles 1:6



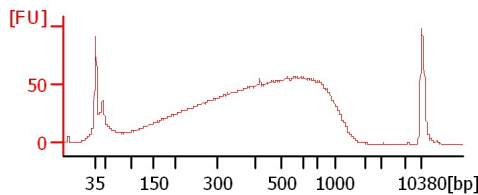
156P14 Soni 4+3Cycles 1:6



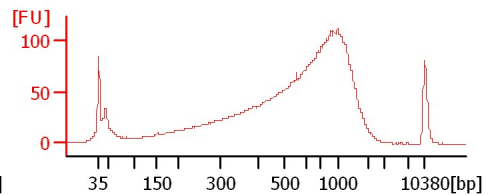
502I15 Soni 4+3Cycles 1:6



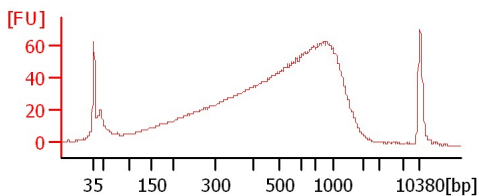
137I5 Soni 4+2Cycles 1:6



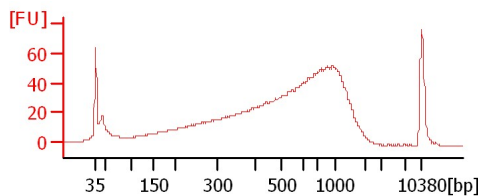
151K7 Soni 4+3Cycles 1:6



132B20-1 Soni 4+3Cycles 1:6



707G02-1 Soni 4+3Cycles 1:6



Assay Class: High Sensitivity DNA Assay
Data Path: C:\...ents and Settings\Bioanalyzer\2012-07-26\2012-07-26_001.xad

Created: 7/26/2012 9:50:44 AM
Modified: 7/26/2012 10:37:29 AM

Electrophoresis File Run Summary (Chip Summary)

Sample Name	Sample Comment	Rest. Digest	Status	Observation	Result Label	Result Color
861H15 Soni 4+3Cycles 1:6		<input type="checkbox"/>	✓			
813K5 Soni 4+2Cycles 1:6		<input type="checkbox"/>	✓			
931G16 Soni 4+3Cycles 1:6		<input type="checkbox"/>	✓			
767N15 Soni 4+3Cycles 1:6		<input type="checkbox"/>	✓			
1062E24 Soni 4+3Cycles 1:6		<input type="checkbox"/>	✓			
156P14 Soni 4+3Cycles 1:6		<input type="checkbox"/>	✓			
502I15 Soni 4+3Cycles 1:6		<input type="checkbox"/>	✓			
137I5 Soni 4+2Cycles 1:6		<input type="checkbox"/>	✓			
151K7 Soni 4+3Cycles 1:6		<input type="checkbox"/>	✓			
132B20-1 Soni 4+3Cycles 1:6		<input type="checkbox"/>	✓			
707G02-1 Soni 4+3Cycles 1:6		<input type="checkbox"/>	✓			
Ladder		<input type="checkbox"/>	✓			

Chip Lot #**Reagent Kit Lot #****Chip Comments :**

Assay Class: High Sensitivity DNA Assay
Data Path: C:\...ents and Settings\Bioanalyzer\2012-07-26\2012-07-26_001.xad

Created: 7/26/2012 9:50:44 AM
Modified: 7/26/2012 10:37:29 AM

Electrophoresis Assay Details

General Analysis Settings

Number of Available Sample and Ladder Wells (Max.) : 12
Minimum Visible Range [s] : 32
Maximum Visible Range [s] : 138
Start Analysis Time Range [s] : 33
End Analysis Time Range [s] : 137.5
Ladder Concentration [pg/μl] : 1950
Uses Standard Area for Ladder Fragments
Lower Marker Concentration [pg/μl] : 125
Upper Marker Concentration [pg/μl] : 75
Used Upper Marker for Quantitation
Standard Curve Fit is Point to Point
Show Data Aligned to Lower and Upper Marker

Integrator Settings

Integration Start Time [s] : 33.05
Integration End Time [s] : 137
Slope Threshold : 0.8
Height Threshold [FU] : 5
Area Threshold : 0.1
Width Threshold [s] : 0.6
Baseline Plateau [s] : 0.5

Filter Settings

Filter Width [s] : 0.5
Polynomial Order : 4

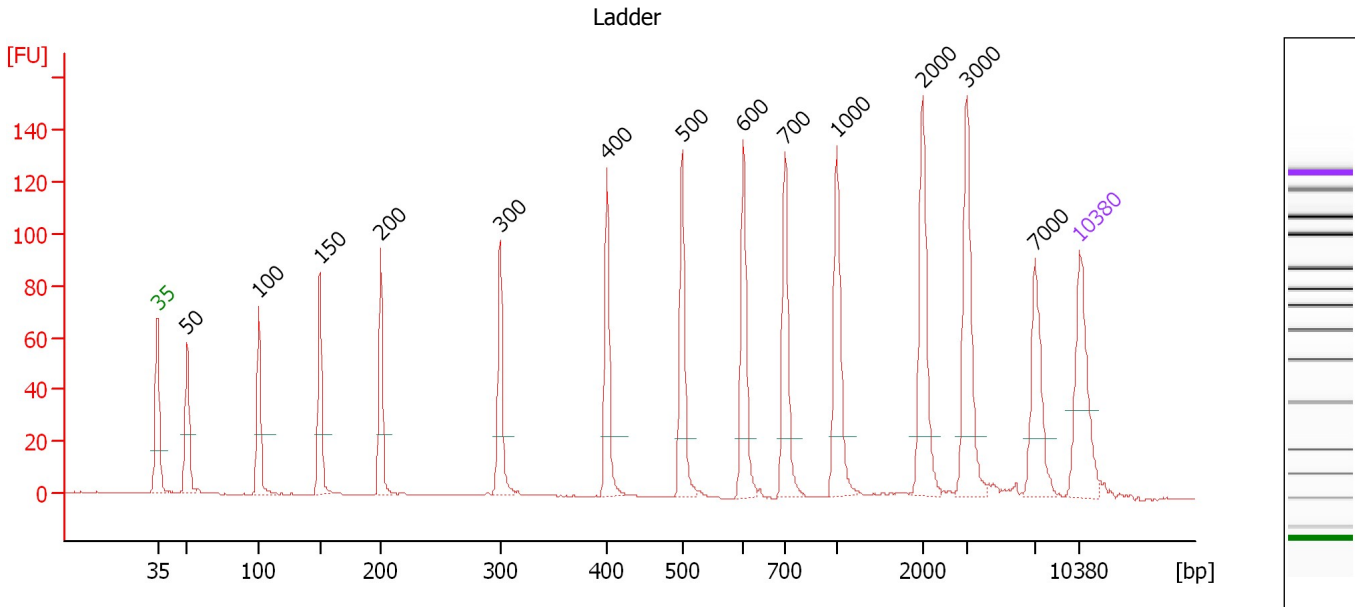
Ladder

Ladder Peak	Size	Area
1	35	160
2	50	210
3	100	208
4	150	221
5	200	242
6	300	270
7	400	305
8	500	306
9	600	336
10	700	321
11	1000	366
12	2000	413
13	3000	411
14	7000	400
15	10380	214

Assay Class: High Sensitivity DNA Assay
 Data Path: C:\...ents and Settings\Bioanalyzer\2012-07-26\2012-07-26_001.xad

Created: 7/26/2012 9:50:44 AM
 Modified: 7/26/2012 10:37:29 AM

Electropherogram Summary



Overall Results for Ladder

Noise: 0.2

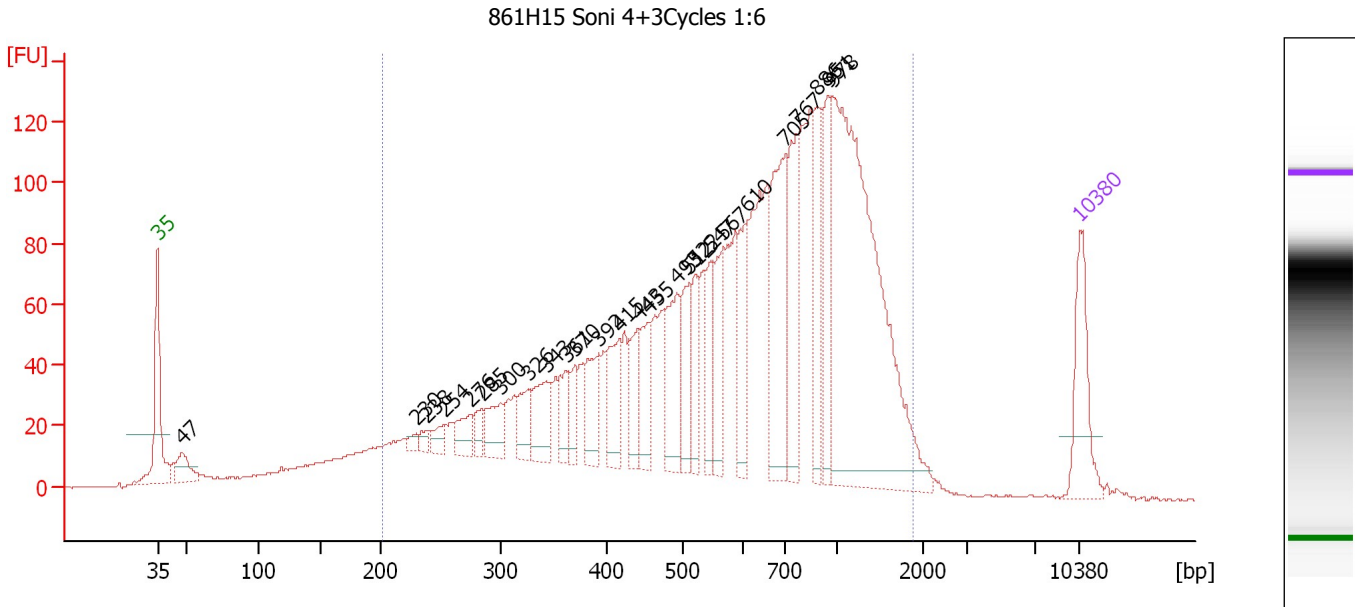
Peak table for Ladder

Peak	Size [bp]	Conc. [pg/μl]	Molarity [pmol/l]	Observations
1	35	125.00	5,411.3	Lower Marker
2	50	150.00	4,545.5	Ladder Peak
3	100	150.00	2,272.7	Ladder Peak
4	150	150.00	1,515.2	Ladder Peak
5	200	150.00	1,136.4	Ladder Peak
6	300	150.00	757.6	Ladder Peak
7	400	150.00	568.2	Ladder Peak
8	500	150.00	454.5	Ladder Peak
9	600	150.00	378.8	Ladder Peak
10	700	150.00	324.7	Ladder Peak
11	1,000	150.00	227.3	Ladder Peak
12	2,000	150.00	113.6	Ladder Peak
13	3,000	150.00	75.8	Ladder Peak
14	7,000	150.00	32.5	Ladder Peak
15	10,380	75.00	10.9	Upper Marker

Assay Class: High Sensitivity DNA Assay
 Data Path: C:\...ents and Settings\Bioanalyzer\2012-07-26\2012-07-26_001.xad

Created: 7/26/2012 9:50:44 AM
 Modified: 7/26/2012 10:37:29 AM

Electropherogram Summary Continued ...



Overall Results for sample 1 : 861H15 Soni 4+3Cycles 1:6

Number of peaks found: 26 Corr. Area 1: 2,995.8
 Noise: 0.2

Peak table for sample 1 : 861H15 Soni 4+3Cycles 1:6

Peak	Size [bp]	Conc. [pg/μl]	Molarity [pmol/l]	Observations
1	35	125.00	5,411.3	Lower Marker
2	47	45.72	1,467.9	
3	230	10.65	70.2	
4	238	13.34	84.8	
5	254	21.05	125.8	
6	276	36.33	199.5	
7	285	21.10	112.2	
8	300	47.54	239.9	
9	326	45.41	211.0	
10	343	70.35	311.0	
11	361	36.97	154.9	
12	370	33.64	137.8	
13	392	66.87	258.5	
14	415	74.29	271.1	
15	443	58.48	200.1	
16	455	62.06	206.8	
17	493	100.68	309.2	
18	512	63.52	187.9	
19	522	57.72	167.6	
20	547	59.91	166.0	
21	567	73.73	197.0	
22	610	80.11	199.1	
23	705	165.34	355.2	
24	767	117.35	231.9	
25	886	89.34	152.8	
26	951	81.53	129.9	

Assay Class: High Sensitivity DNA Assay
Data Path: C:\...ents and Settings\Bioanalyzer\2012-07-26\2012-07-26_001.xad

Created: 7/26/2012 9:50:44 AM
Modified: 7/26/2012 10:37:29 AM

Electropherogram Summary Continued ...**... Peak table for sample 1 : 861H15 Soni 4+3Cycles 1:6**

Peak	Size [bp]	Conc. [pg/ μ l]	Molarity [pmol/l]	Observations
27	978	564.19	874.1	
28	▶ 10,380	75.00	10.9	Upper Marker

Region table for sample 1 : 861H15 Soni 4+3Cycles 1:6

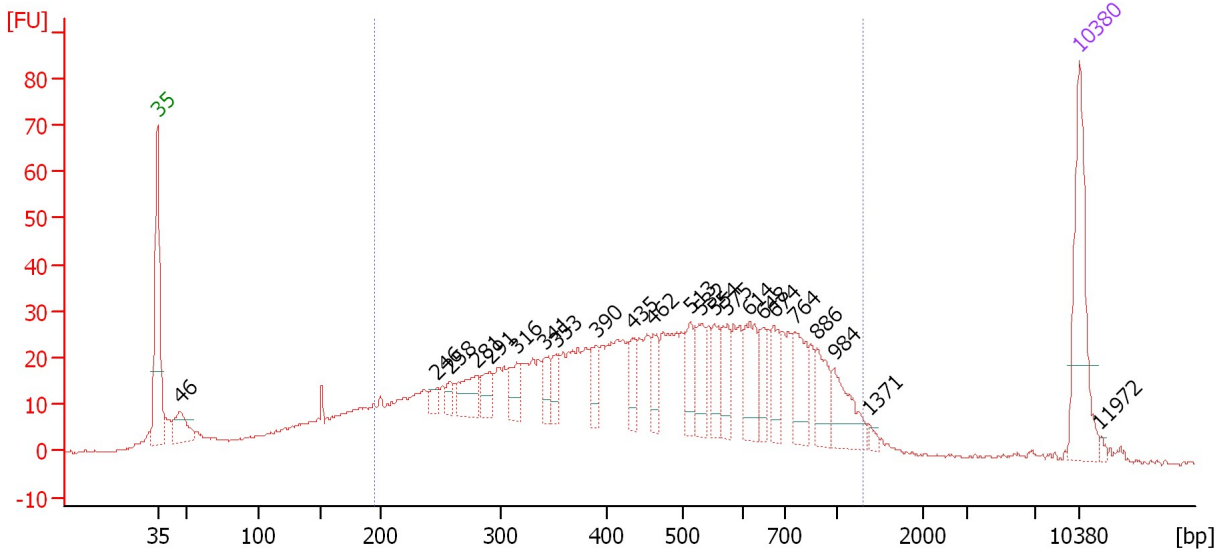
From [bp]	To [bp]	Average Size [bp]	Molarity [pmol/l]	Conc. [pg/ μ l]	Corr. Area	% of Total	Size distribution in CV [%]	Color
201	1,897	712	10,380.6	3,400.55	2,995.8	91	51.5	■

Assay Class: High Sensitivity DNA Assay
 Data Path: C:\...ents and Settings\Bioanalyzer\2012-07-26\2012-07-26_001.xad

Created: 7/26/2012 9:50:44 AM
 Modified: 7/26/2012 10:37:29 AM

Electropherogram Summary Continued ...

813K5 Soni 4+2Cycles 1:6



Overall Results for sample 2 : 813K5 Soni 4+2Cycles 1:6

Number of peaks found: 23 Corr. Area 1: 1,048.2
 Noise: 0.2

Peak table for sample 2 : 813K5 Soni 4+2Cycles 1:6

Peak	Size [bp]	Conc. [pg/μl]	Molarity [pmol/l]	Observations
1	35	125.00	5,411.3	Lower Marker
2	46	35.50	1,161.7	
3	246	10.08	62.0	
4	258	10.42	61.3	
5	281	33.67	181.8	
6	291	20.85	108.4	
7	316	24.20	116.1	
8	341	20.23	89.8	
9	353	17.93	77.0	
10	390	20.86	81.0	
11	435	20.85	72.7	
12	462	21.60	70.8	
13	513	26.65	78.7	
14	532	31.80	90.5	
15	554	24.06	65.8	
16	575	28.38	74.8	
17	614	42.93	106.0	
18	648	22.93	53.7	
19	674	26.50	59.6	
20	764	39.06	77.5	
21	886	29.50	50.4	
22	984	37.66	58.0	
23	1,371	4.44	4.9	
24	10,380	75.00	10.9	Upper Marker
25	11,972	0.00	0.0	

Assay Class: High Sensitivity DNA Assay
Data Path: C:\...ents and Settings\Bioanalyzer\2012-07-26\2012-07-26_001.xad

Created: 7/26/2012 9:50:44 AM
Modified: 7/26/2012 10:37:29 AM

Electropherogram Summary Continued ...

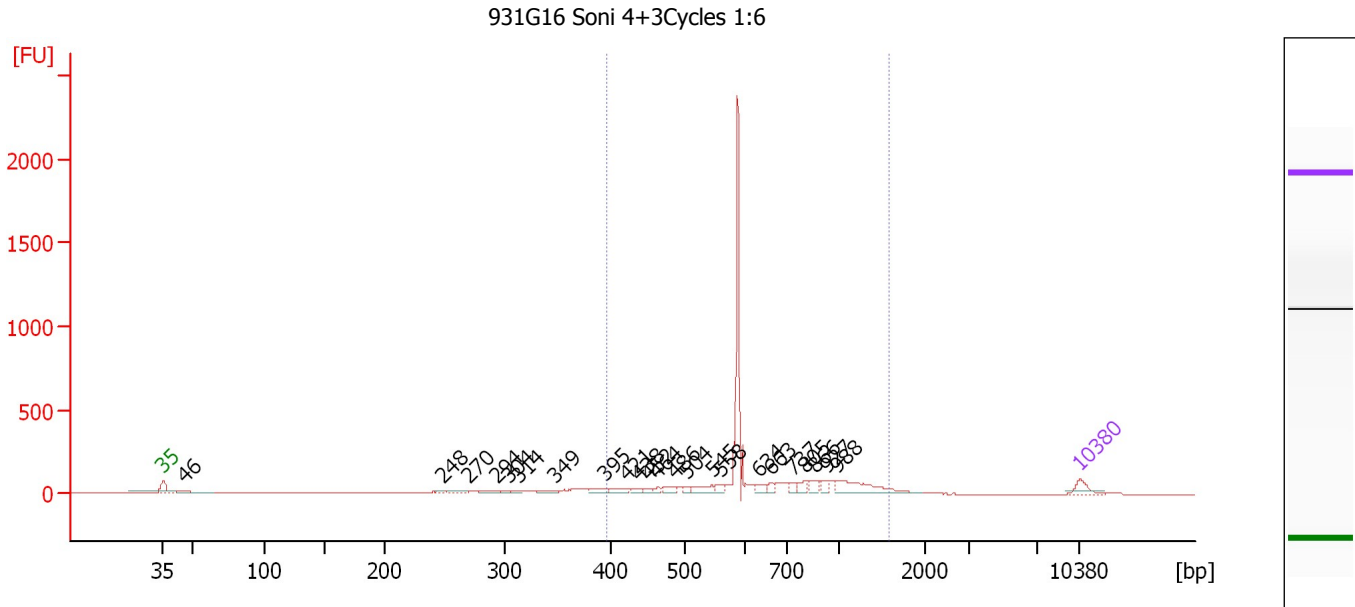
... Region table for sample 2 : **813K5 Soni 4+2Cycles 1:6**

From [bp]	To [bp]	Average Size [bp]	Molarity [pmol/l]	Conc. [pg/μl]	Corr. Area	% of Total	Size distribution in CV [%]	Color
195	1,316	502	5,704.4	1,467.22	1,048.2	82	43.5	■

Assay Class: High Sensitivity DNA Assay
 Data Path: C:\...ents and Settings\Bioanalyzer\2012-07-26\2012-07-26_001.xad

Created: 7/26/2012 9:50:44 AM
 Modified: 7/26/2012 10:37:29 AM

Electropherogram Summary Continued ...



Overall Results for sample 3 : 931G16 Soni 4+3Cycles 1:6

Number of peaks found: 23 Corr. Area 1: 1,948.2
 Noise: 0.2

Peak table for sample 3 : 931G16 Soni 4+3Cycles 1:6

Peak	Size [bp]	Conc. [pg/μl]	Molarity [pmol/l]	Observations
1	35	125.00	5,411.3	Lower Marker
2	46	94.41	3,091.3	
3	248	8.80	53.7	
4	270	25.40	142.5	
5	294	32.21	166.3	
6	304	18.84	94.0	
7	314	21.02	101.3	
8	349	52.12	226.5	
9	395	59.30	227.3	
10	421	63.92	229.8	
11	438	41.22	142.6	
12	452	34.13	114.3	
13	464	33.28	108.7	
14	486	57.82	180.4	
15	504	36.31	109.2	
16	545	110.28	306.5	
17	558	43.88	119.1	
18	634	64.36	153.7	
19	663	48.92	111.8	
20	737	53.59	110.2	
21	805	66.49	125.1	
22	866	72.03	126.0	
23	927	58.57	95.7	
24	988	307.59	471.6	
25	10,380	75.00	10.9	Upper Marker

Assay Class: High Sensitivity DNA Assay
Data Path: C:\...ents and Settings\Bioanalyzer\2012-07-26\2012-07-26_001.xad

Created: 7/26/2012 9:50:44 AM
Modified: 7/26/2012 10:37:29 AM

Electropherogram Summary Continued ...

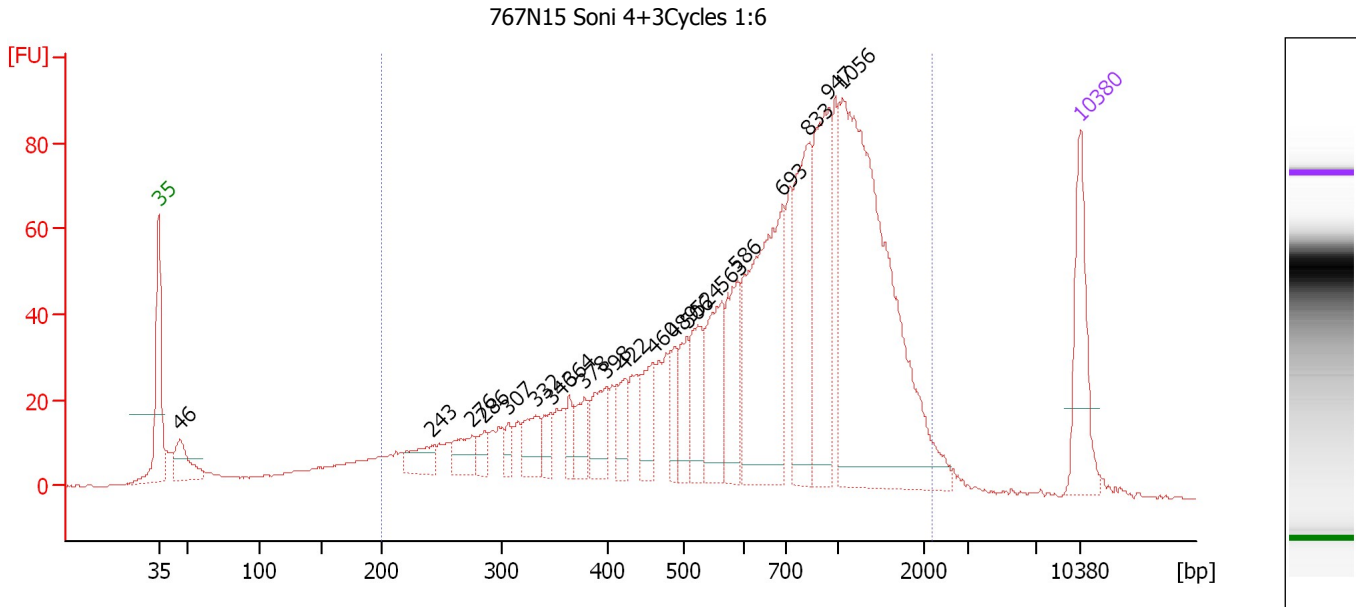
... Region table for sample 3 : 931G16 Soni 4+3Cycles 1:6

From [bp]	To [bp]	Average Size [bp]	Molarity [pmol/l]	Conc. [pg/μl]	Corr. Area	% of Total	Size distribution in CV [%]	Color
396	1,580	705	5,440.9	2,248.01	1,948.2	74	35.6	■

Assay Class: High Sensitivity DNA Assay
 Data Path: C:\...ents and Settings\Bioanalyzer\2012-07-26\2012-07-26_001.xad

Created: 7/26/2012 9:50:44 AM
 Modified: 7/26/2012 10:37:29 AM

Electropherogram Summary Continued ...



Overall Results for sample 4 : 767N15 Soni 4+3Cycles 1:6

Number of peaks found: 21 Corr. Area 1: 1,808.9
 Noise: 0.1

Peak table for sample 4 : 767N15 Soni 4+3Cycles 1:6

Peak	Size [bp]	Conc. [pg/μl]	Molarity [pmol/l]	Observations
1	35	125.00	5,411.3	Lower Marker
2	46	56.77	1,875.0	
3	243	34.95	218.4	
4	276	36.24	199.2	
5	286	20.67	109.6	
6	307	16.10	79.5	
7	332	41.92	191.2	
8	346	19.60	85.7	
9	364	21.06	87.7	
10	378	34.93	140.0	
11	398	51.92	197.6	
12	422	34.40	123.5	
13	460	46.58	153.3	
14	489	34.35	106.4	
15	506	43.08	128.9	
16	524	62.10	179.5	
17	563	87.84	236.2	
18	586	77.48	200.2	
19	693	261.51	571.8	
20	833	143.05	260.0	
21	947	155.55	248.8	
22	1,056	471.23	676.1	
23	10,380	75.00	10.9	Upper Marker

Assay Class: High Sensitivity DNA Assay
Data Path: C:\...ents and Settings\Bioanalyzer\2012-07-26\2012-07-26_001.xad

Created: 7/26/2012 9:50:44 AM
Modified: 7/26/2012 10:37:29 AM

Electropherogram Summary Continued ...

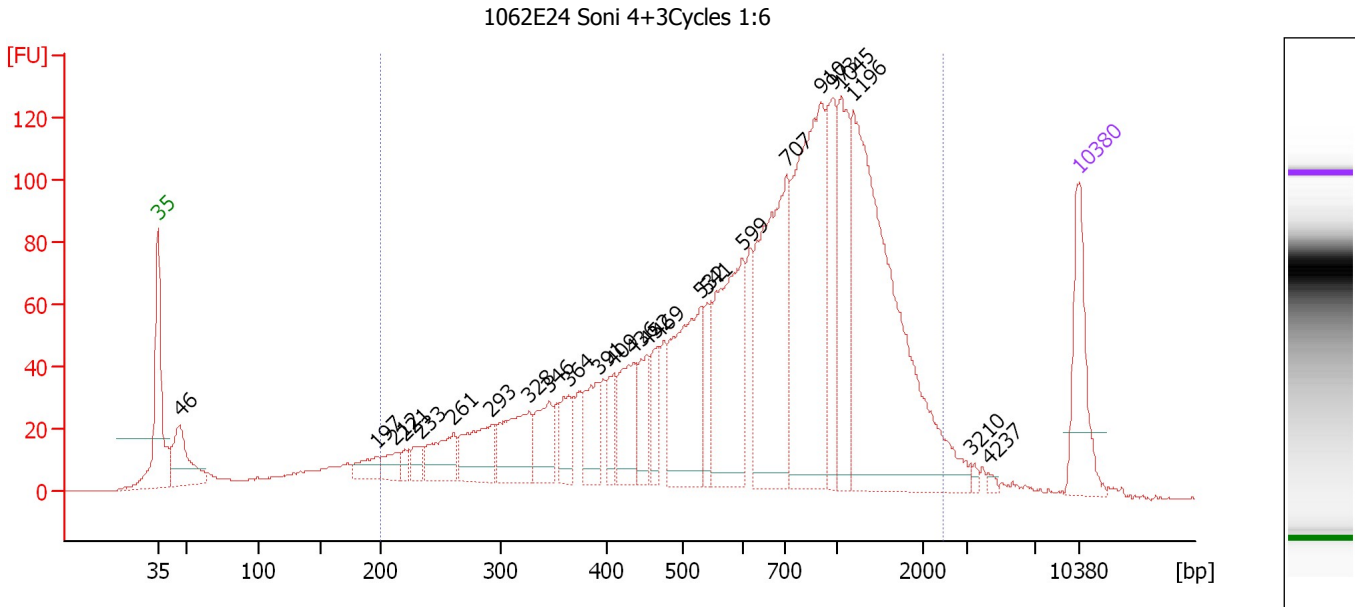
... Region table for sample 4 : 767N15 Soni 4+3Cycles 1:6

From [bp]	To [bp]	Average Size [bp]	Molarity [pmol/l]	Conc. [pg/μl]	Corr. Area	% of Total	Size distribution in CV [%]	Color
200	2,201	806	6,294.2	2,239.45	1,808.9	90	53.1	■

Assay Class: High Sensitivity DNA Assay
 Data Path: C:\...ents and Settings\Bioanalyzer\2012-07-26\2012-07-26_001.xad

Created: 7/26/2012 9:50:44 AM
 Modified: 7/26/2012 10:37:29 AM

Electropherogram Summary Continued ...



Overall Results for sample 5 : 1062E24 Soni 4+3Cycles 1:6

Number of peaks found: 25 Corr. Area 1: 2,685.2
 Noise: 0.2

Peak table for sample 5 : 1062E24 Soni 4+3Cycles 1:6

Peak	Size [bp]	Conc. [pg/μl]	Molarity [pmol/l]	Observations
1	35	125.00	5,411.3	Lower Marker
2	46	95.71	3,143.5	
3	197	29.03	223.7	
4	212	24.80	177.4	
5	221	12.63	86.8	
6	233	21.21	138.1	
7	261	62.09	360.5	
8	293	80.49	416.8	
9	328	93.08	430.4	
10	346	56.88	249.2	
11	364	42.12	175.3	
12	391	57.90	224.1	
13	409	30.16	111.8	
14	436	74.32	258.5	
15	452	47.23	158.3	
16	469	41.82	135.2	
17	532	168.60	480.4	
18	541	44.71	125.1	
19	599	186.18	471.3	
20	707	265.92	569.9	
21	910	302.52	503.9	
22	973	97.69	152.1	
23	1,045	111.25	161.4	
24	1,196	428.65	543.0	
25	3,210	4.34	2.0	
26	4,237	3.32	1.2	

Assay Class: High Sensitivity DNA Assay
 Data Path: C:\...ents and Settings\Bioanalyzer\2012-07-26\2012-07-26_001.xad

Created: 7/26/2012 9:50:44 AM
 Modified: 7/26/2012 10:37:29 AM

Electropherogram Summary Continued ...

... Peak table for sample 5 : 1062E24 Soni 4+3Cycles 1:6

Peak	Size [bp]	Conc. [pg/μl]	Molarity [pmol/l]	Observations
27	10,380	75.00	10.9	Upper Marker

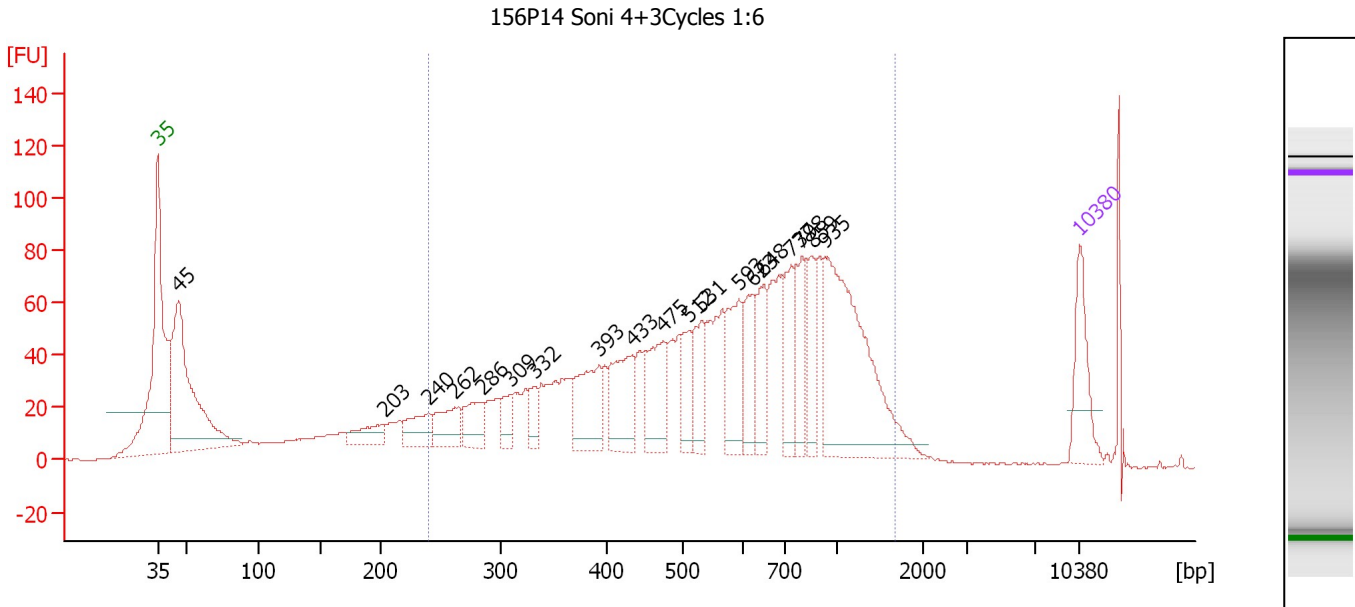
Region table for sample 5 : 1062E24 Soni 4+3Cycles 1:6

From [bp]	To [bp]	Average Size [bp]	Molarity [pmol/l]	Conc. [pg/μl]	Corr. Area	% of Total	Size distribution in CV [%]	Color
200	2,462	810	7,408.7	2,599.50	2,685.2	89	56.2	

Assay Class: High Sensitivity DNA Assay
 Data Path: C:\...ents and Settings\Bioanalyzer\2012-07-26\2012-07-26_001.xad

Created: 7/26/2012 9:50:44 AM
 Modified: 7/26/2012 10:37:29 AM

Electropherogram Summary Continued ...



Overall Results for sample 6 : 156P14 Soni 4+3Cycles 1:6

Number of peaks found: 19 Corr. Area 1: 1,925.9
 Noise: 0.2

Peak table for sample 6 : 156P14 Soni 4+3Cycles 1:6

Peak	Size [bp]	Conc. [pg/μl]	Molarity [pmol/l]	Observations
1	35	125.00	5,411.3	Lower Marker
2	45	484.13	16,179.6	
3	203	52.81	393.5	
4	240	64.31	405.9	
5	262	69.02	398.7	
6	286	65.17	345.7	
7	309	39.26	192.3	
8	332	33.94	155.1	
9	393	122.79	473.4	
10	433	119.37	417.3	
11	475	114.62	365.6	
12	512	59.26	175.5	
13	531	76.11	217.1	
14	593	105.06	268.6	
15	623	80.63	196.2	
16	648	80.38	187.9	
17	737	83.53	171.8	
18	798	84.35	160.2	
19	859	73.40	129.5	
20	935	349.43	566.1	
21	10,380	75.00	10.9	Upper Marker

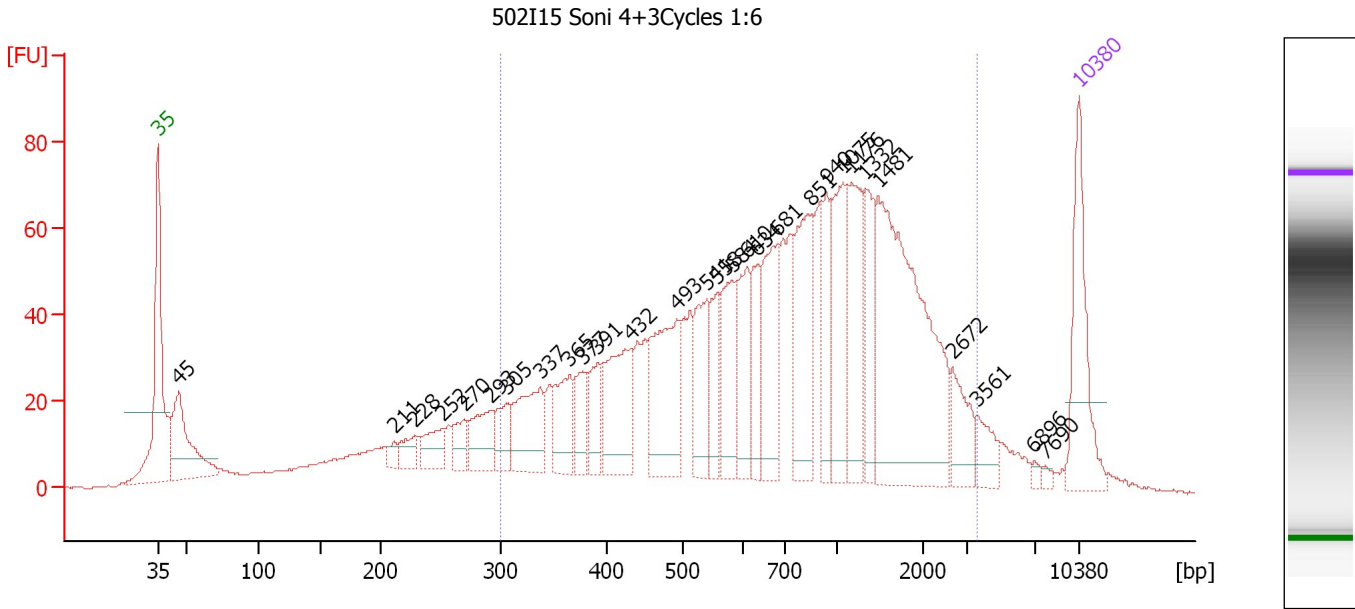
Region table for sample 6 : 156P14 Soni 4+3Cycles 1:6

From [bp]	To [bp]	Average Size [bp]	Molarity [pmol/l]	Conc. [pg/μl]	Corr. Area	% of Total	Size distribution in CV [%]	Color
241	1,684	647	7,729.2	2,482.92	1,925.9	75	47.5	Blue

Assay Class: High Sensitivity DNA Assay
 Data Path: C:\...ents and Settings\Bioanalyzer\2012-07-26\2012-07-26_001.xad

Created: 7/26/2012 9:50:44 AM
 Modified: 7/26/2012 10:37:29 AM

Electropherogram Summary Continued ...



Overall Results for sample 7 : 502I15 Soni 4+3Cycles 1:6

Number of peaks found: 29 Corr. Area 1: 1,799.0
 Noise: 0.2

Peak table for sample 7 : 502I15 Soni 4+3Cycles 1:6

Peak	Size [bp]	Conc. [pg/μl]	Molarity [pmol/l]	Observations
1	35	125.00	5,411.3	Lower Marker
2	45	123.52	4,116.4	
3	211	11.58	83.0	
4	228	21.63	143.6	
5	252	33.29	200.3	
6	270	24.15	135.6	
7	293	48.49	250.8	
8	305	31.66	157.1	
9	337	77.10	346.3	
10	365	55.18	229.2	
11	377	34.07	137.0	
12	391	33.32	129.1	
13	432	93.89	329.1	
14	493	119.65	367.5	
15	541	59.08	165.5	
16	558	46.62	126.5	
17	584	67.94	176.4	
18	610	61.51	152.9	
19	634	45.74	109.3	
20	681	85.34	189.9	
21	851	99.21	176.6	
22	940	46.26	74.5	
23	1,075	87.16	122.9	
24	1,176	76.30	98.3	
25	1,332	49.37	56.1	
26	1,481	254.67	260.6	

Assay Class: High Sensitivity DNA Assay
 Data Path: C:\...ents and Settings\Bioanalyzer\2012-07-26\2012-07-26_001.xad

Created: 7/26/2012 9:50:44 AM
 Modified: 7/26/2012 10:37:29 AM

Electropherogram Summary Continued ...

... Peak table for sample 7 : 502I15 Soni 4+3Cycles 1:6

Peak	Size [bp]	Conc. [pg/μl]	Molarity [pmol/l]	Observations
27	2,672	34.14	19.4	
28	3,561	19.85	8.4	
29	6,896	3.87	0.9	
30	7,690	3.50	0.7	
31	10,380	75.00	10.9	Upper Marker

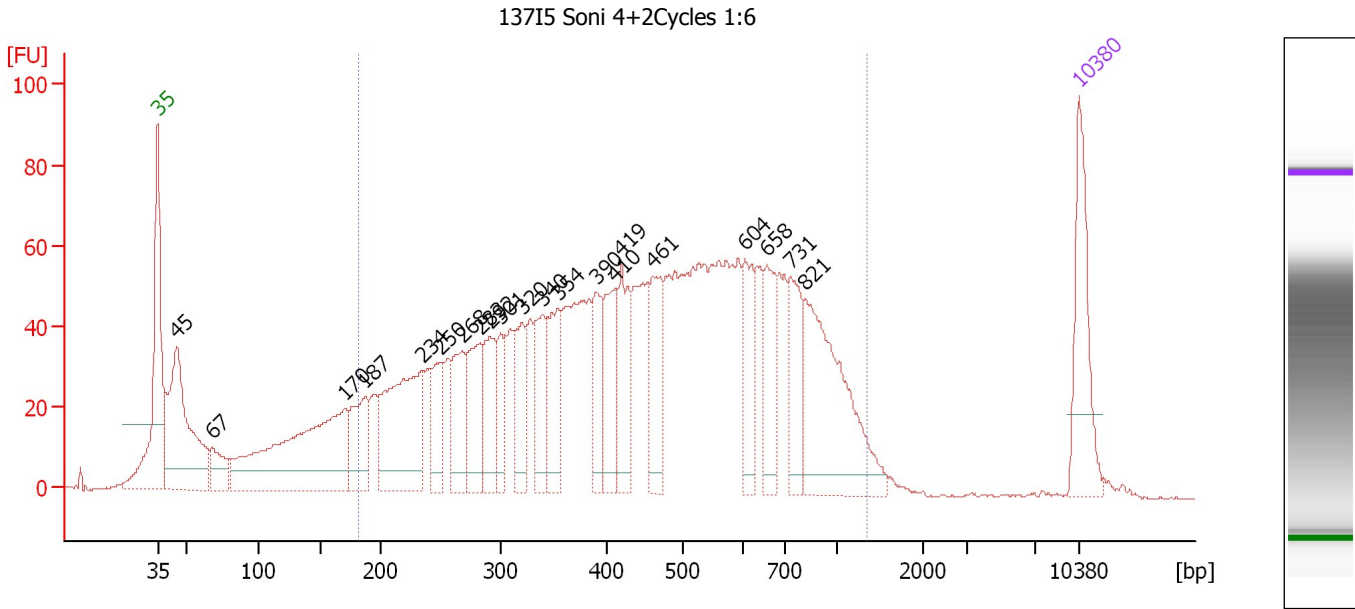
Region table for sample 7 : 502I15 Soni 4+3Cycles 1:6

From [bp]	To [bp]	Average Size [bp]	Molarity [pmol/l]	Conc. [pg/μl]	Corr. Area	% of Total	Size distribution in CV [%]	Color
301	3,618	972	4,633.5	1,893.30	1,799.0	78	66.1	

Assay Class: High Sensitivity DNA Assay
 Data Path: C:\...ents and Settings\Bioanalyzer\2012-07-26\2012-07-26_001.xad

Created: 7/26/2012 9:50:44 AM
 Modified: 7/26/2012 10:37:29 AM

Electropherogram Summary Continued ...



Overall Results for sample 8 : 13715 Soni 4+2Cycles 1:6

Number of peaks found: 21 Corr. Area 1: 2,131.2
 Noise: 0.2

Peak table for sample 8 : 13715 Soni 4+2Cycles 1:6

Peak	Size [bp]	Conc. [pg/μl]	Molarity [pmol/l]	Observations
1	35	125.00	5,411.3	Lower Marker
2	45	239.87	8,163.2	
3	67	42.78	960.5	
4	170	291.67	2,594.8	
5	187	79.46	643.9	
6	234	191.70	1,239.4	
7	250	58.31	353.9	
8	268	70.31	397.8	
9	283	78.12	418.1	
10	292	70.00	363.7	
11	301	45.55	229.5	
12	320	60.47	286.0	
13	340	68.07	303.4	
14	354	71.17	304.2	
15	390	57.68	224.2	
16	410	74.48	275.4	
17	419	73.50	265.9	
18	461	80.55	264.6	
19	604	62.12	155.9	
20	658	57.97	133.6	
21	731	65.24	135.2	
22	821	185.26	342.1	
23	10,380	75.00	10.9	Upper Marker

Assay Class: High Sensitivity DNA Assay
Data Path: C:\...ents and Settings\Bioanalyzer\2012-07-26\2012-07-26_001.xad

Created: 7/26/2012 9:50:44 AM
Modified: 7/26/2012 10:37:29 AM

Electropherogram Summary Continued ...

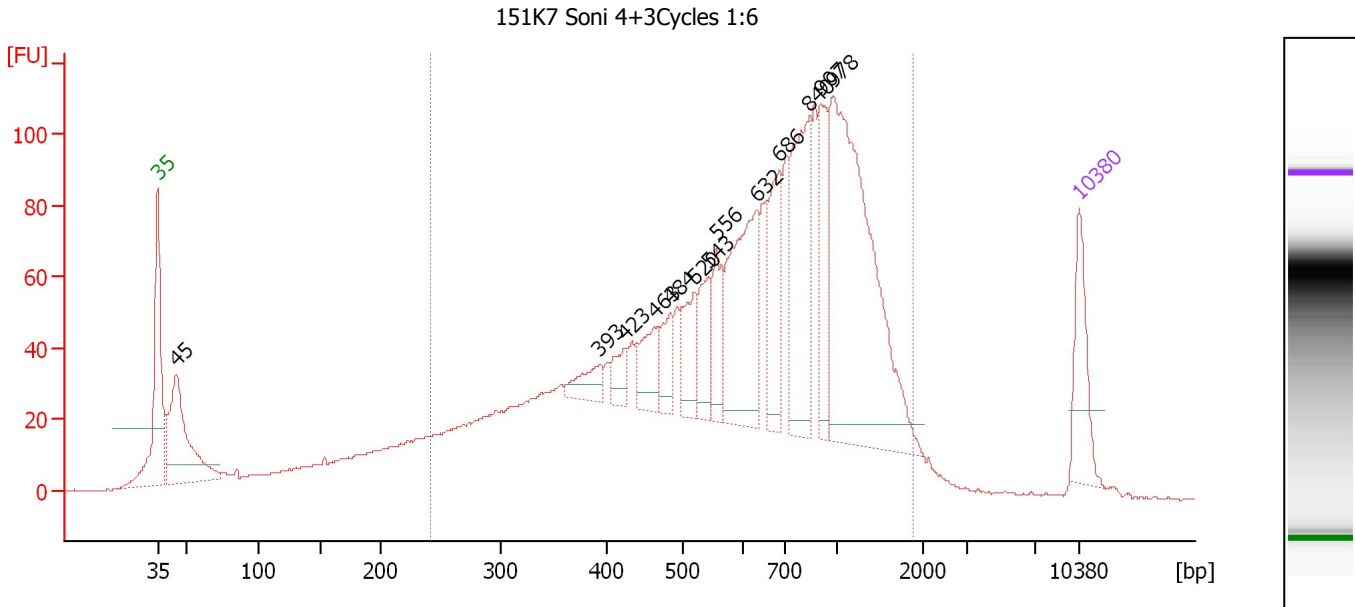
... Region table for sample 8 : 13715 Soni 4+2Cycles 1:6

From [bp]	To [bp]	Average Size [bp]	Molarity [pmol/l]	Conc. [pg/μl]	Corr. Area	% of Total	Size distribution in CV [%]	Color
182	1,341	490	9,601.5	2,370.74	2,131.2	82	44.7	■

Assay Class: High Sensitivity DNA Assay
 Data Path: C:\...ents and Settings\Bioanalyzer\2012-07-26\2012-07-26_001.xad

Created: 7/26/2012 9:50:44 AM
 Modified: 7/26/2012 10:37:29 AM

Electropherogram Summary Continued ...



Overall Results for sample 9 : 151K7 Soni 4+3Cycles 1:6

Number of peaks found: 13 Corr. Area 1: 2,268.7
 Noise: 0.1

Peak table for sample 9 : 151K7 Soni 4+3Cycles 1:6

Peak	Size [bp]	Conc. [pg/µl]	Molarity [pmol/l]	Observations
1	35	125.00	5,411.3	Lower Marker
2	45	255.32	8,675.3	
3	393	41.61	160.5	
4	423	35.27	126.2	
5	463	62.87	205.5	
6	484	51.69	161.7	
7	520	65.43	190.7	
8	543	71.05	198.2	
9	556	57.36	156.2	
10	632	231.66	555.1	
11	686	119.81	264.5	
12	840	202.39	364.9	
13	907	94.95	158.6	
14	978	497.24	770.6	
15	10,380	75.00	10.9	Upper Marker

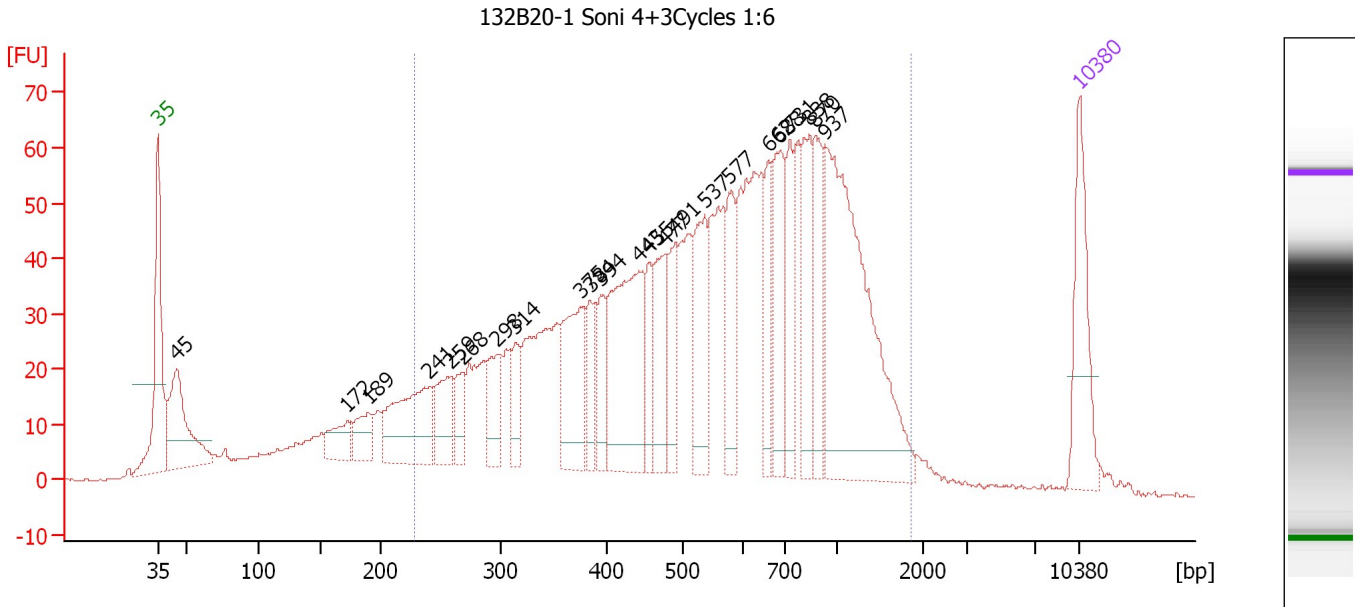
Region table for sample 9 : 151K7 Soni 4+3Cycles 1:6

From [bp]	To [bp]	Average Size [bp]	Molarity [pmol/l]	Conc. [pg/µl]	Corr. Area	% of Total	Size distribution in CV [%]	Color
242	1,897	730	9,256.6	3,249.79	2,268.7	84	49.5	Blue

Assay Class: High Sensitivity DNA Assay
 Data Path: C:\...ents and Settings\Bioanalyzer\2012-07-26\2012-07-26_001.xad

Created: 7/26/2012 9:50:44 AM
 Modified: 7/26/2012 10:37:29 AM

Electropherogram Summary Continued ...



Overall Results for sample 10 : 132B20-1 Soni 4+3Cycles 1:6

Number of peaks found: 23 Corr. Area 1: 1,730.5
 Noise: 0.2

Peak table for sample 10 : 132B20-1 Soni 4+3Cycles 1:6

Peak	Size [bp]	Conc. [pg/µl]	Molarity [pmol/l]	Observations
1	35	125.00	5,411.3	Lower Marker
2	45	153.85	5,217.5	
3	172	41.28	363.0	
4	189	40.28	322.5	
5	241	131.79	829.0	
6	259	58.90	344.9	
7	268	32.47	183.6	
8	298	52.00	264.5	
9	314	38.94	187.7	
10	375	110.84	447.4	
11	384	42.07	165.9	
12	394	45.97	176.8	
13	443	185.58	635.0	
14	455	48.10	160.3	
15	477	72.23	229.6	
16	491	55.16	170.1	
17	537	94.71	267.5	
18	577	73.15	192.1	
19	662	61.00	139.7	
20	688	87.81	193.3	
21	731	63.77	132.1	
22	838	71.16	128.6	
23	870	69.74	121.5	
24	937	313.83	507.3	
25	10,380	75.00	10.9	Upper Marker

Assay Class: High Sensitivity DNA Assay
Data Path: C:\...ents and Settings\Bioanalyzer\2012-07-26\2012-07-26_001.xad

Created: 7/26/2012 9:50:44 AM
Modified: 7/26/2012 10:37:29 AM

Electropherogram Summary Continued ...

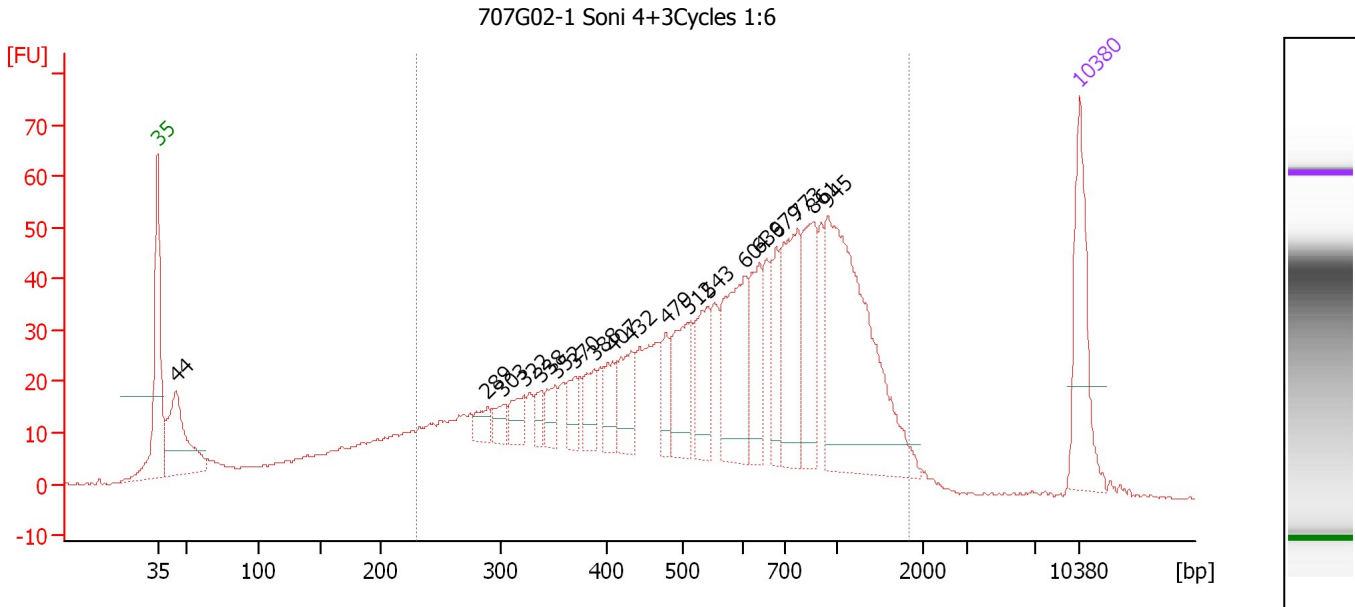
... Region table for sample 10 : 132B20-1 Soni 4+3Cycles 1:6

From [bp]	To [bp]	Average Size [bp]	Molarity [pmol/l]	Conc. [pg/μl]	Corr. Area	% of Total	Size distribution in CV [%]	Color
228	1,867	636	8,466.1	2,607.35	1,730.5	83	51.0	■

Assay Class: High Sensitivity DNA Assay
 Data Path: C:\...ents and Settings\Bioanalyzer\2012-07-26\2012-07-26_001.xad

Created: 7/26/2012 9:50:44 AM
 Modified: 7/26/2012 10:37:29 AM

Electropherogram Summary Continued ...



Overall Results for sample 11 : 707G02-1 Soni 4+3Cycles 1:6

Number of peaks found: 19 Corr. Area 1: 1,291.5
 Noise: 0.1

Peak table for sample 11 : 707G02-1 Soni 4+3Cycles 1:6

Peak	Size [bp]	Conc. [pg/μl]	Molarity [pmol/l]	Observations
1	35	125.00	5,411.3	Lower Marker
2	44	126.07	4,335.4	
3	289	19.41	101.7	
4	303	18.14	90.8	
5	322	24.08	113.2	
6	338	15.19	68.1	
7	352	23.28	100.2	
8	370	23.79	97.5	
9	388	28.30	110.6	
10	407	29.57	110.0	
11	432	46.20	161.9	
12	479	27.42	86.8	
13	512	61.82	182.8	
14	543	55.00	153.5	
15	604	106.09	266.2	
16	639	58.39	138.5	
17	679	41.78	93.2	
18	773	99.33	194.6	
19	861	76.65	134.8	
20	945	250.59	401.7	
21	10,380	75.00	10.9	Upper Marker

Region table for sample 11 : 707G02-1 Soni 4+3Cycles 1:6

From [bp]	To [bp]	Average Size [bp]	Molarity [pmol/l]	Conc. [pg/μl]	Corr. Area	% of Total	Size distribution in CV [%]	Color
230	1,843	670	5,529.5	1,772.01	1,291.5	82	50.9	Blue

Assay Class: High Sensitivity DNA Assay
Data Path: C:\...ents and Settings\Bioanalyzer\2012-07-26\2012-07-26_001.xad

Created: 7/26/2012 9:50:44 AM
Modified: 7/26/2012 10:37:29 AM

Gel Image

