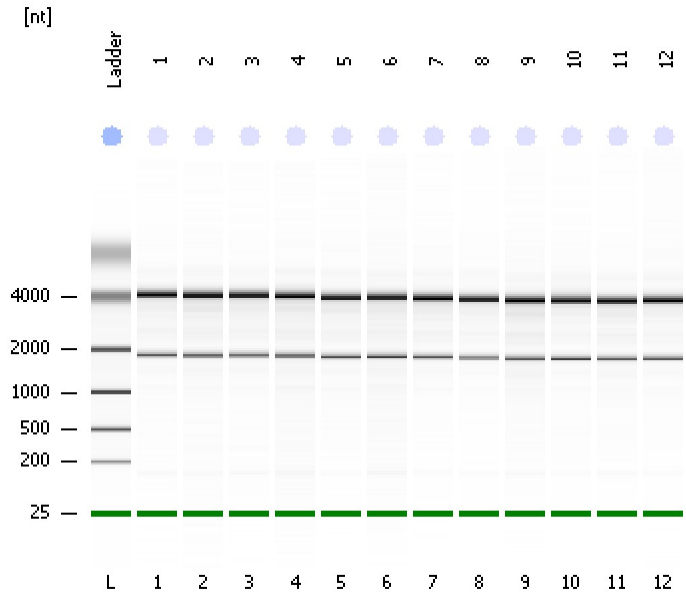


Assay Class: Eukaryote Total RNA Nano  
Data Path: C:\...ents and Settings\Bioanalyzer\2012-07-26\2012-07-26\_002.xad

Created: 7/26/2012 11:24:08 AM  
Modified: 7/26/2012 11:50:09 AM

**Electrophoresis File Run Summary**



Instrument Information:

Instrument Name: DE13701086      Firmware: C.01.069  
Serial#: DE13701086      Type: G2938B

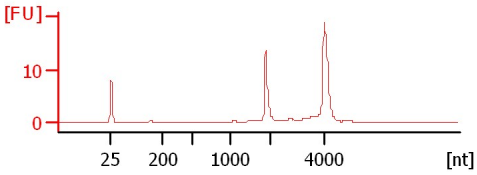
Assay Information:

Assay Origin Path: C:\Program Files\Agilent\2100 bioanalyzer\2100 expert\assays\RNA\Eukaryote Total RNA Nano Series II.xsy  
Assay Class: Eukaryote Total RNA Nano  
Version: 2.6  
Assay Comments: Total RNA Analysis ng sensitivity (Eukaryote)  
© Copyright 2003 - 2009 Agilent Technologies, Inc.

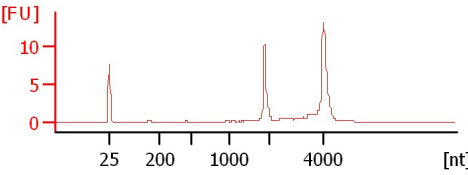
Chip Information:

Chip Lot #:   
Reagent Kit Lot #:   
Chip Comments:

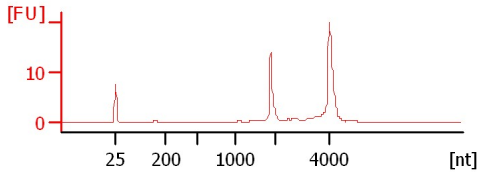
**1**  
RIN: 9.90



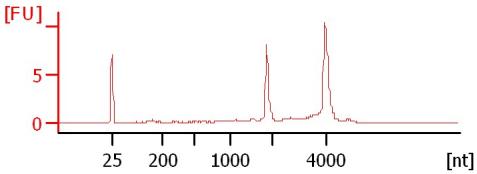
**2**  
RIN: 9.70



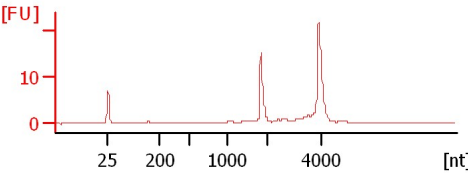
**3**  
RIN: 9.80



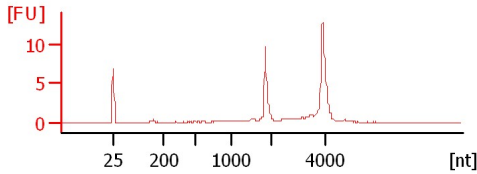
**4**  
RIN: 9.20



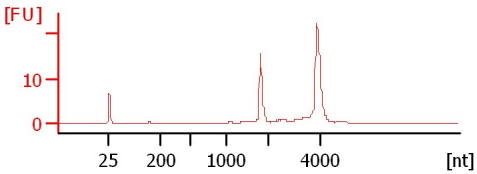
**5**  
RIN: 9.90



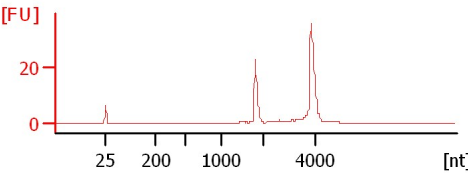
**6**  
RIN: 9.20



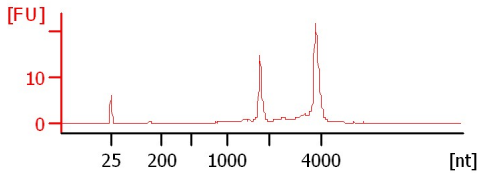
**7**  
RIN: 10



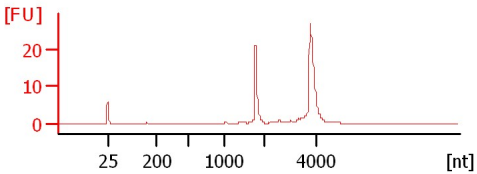
**8**  
RIN: 10



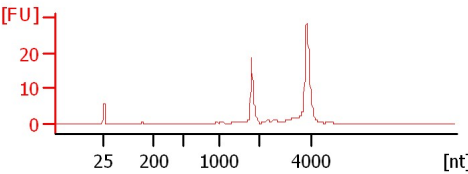
**9**  
RIN: 9.30



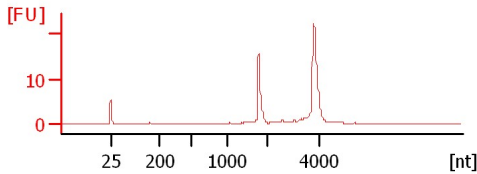
**10**  
RIN: 10



**11**  
RIN: 9.80



**12**  
RIN: 10



Assay Class: Eukaryote Total RNA Nano  
Data Path: C:\...ents and Settings\Bioanalyzer\2012-07-26\2012-07-26\_002.xad

Created: 7/26/2012 11:24:08 AM  
Modified: 7/26/2012 11:50:09 AM

**Electrophoresis File Run Summary (Chip Summary)**

Sample Name	Sample Comment	Status	Result Label	Result Color
1		✓	RIN: 9.90	
2		✓	RIN: 9.70	
3		✓	RIN: 9.80	
4		✓	RIN: 9.20	
5		✓	RIN: 9.90	
6		✓	RIN: 9.20	
7		✓	RIN:10	
8		✓	RIN:10	
9		✓	RIN: 9.30	
10		✓	RIN:10	
11		✓	RIN: 9.80	
12		✓	RIN:10	
Ladder		✓	All Other Samples	

**Chip Lot #**

**Reagent Kit Lot #**

**Chip Comments :**

Assay Class: Eukaryote Total RNA Nano  
Data Path: C:\...ents and Settings\Bioanalyzer\2012-07-26\2012-07-26\_002.xad

Created: 7/26/2012 11:24:08 AM  
Modified: 7/26/2012 11:50:09 AM

## Electrophoresis Assay Details

### General Analysis Settings

Number of Available Sample and Ladder Wells (Max.) : 13  
Minimum Visible Range [s] : 17  
Maximum Visible Range [s] : 70  
Start Analysis Time Range [s] : 19  
End Analysis Time Range [s] : 69  
Ladder Concentration [ng/μl] : 150  
Lower Marker Concentration [ng/μl] : 0  
Upper Marker Concentration [ng/μl] : 0  
Used Lower Marker for Quantitation  
Standard Curve Fit is Logarithmic  
Show Data Aligned to Lower Marker

### Integrator Settings

Integration Start Time [s] : 19  
Integration End Time [s] : 69  
Slope Threshold : 0.6  
Height Threshold [FU] : 0.5  
Area Threshold : 0.2  
Width Threshold [s] : 0.5  
Baseline Plateau [s] : 6

### Filter Settings

Filter Width [s] : 0.5  
Polynomial Order : 4

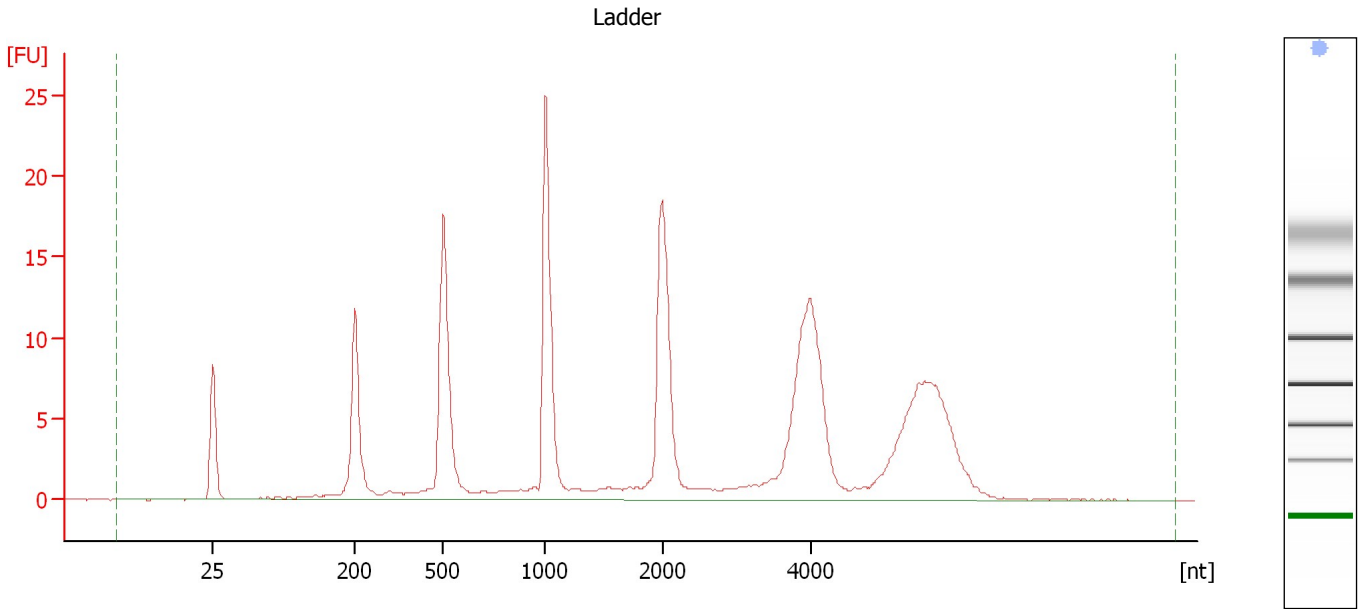
### Ladder

Ladder Peak	Size
1	25
2	200
3	500
4	1000
5	2000
6	4000

Assay Class: Eukaryote Total RNA Nano  
Data Path: C:\...ents and Settings\Bioanalyzer\2012-07-26\2012-07-26\_002.xad

Created: 7/26/2012 11:24:08 AM  
Modified: 7/26/2012 11:50:09 AM

**Electropherogram Summary**



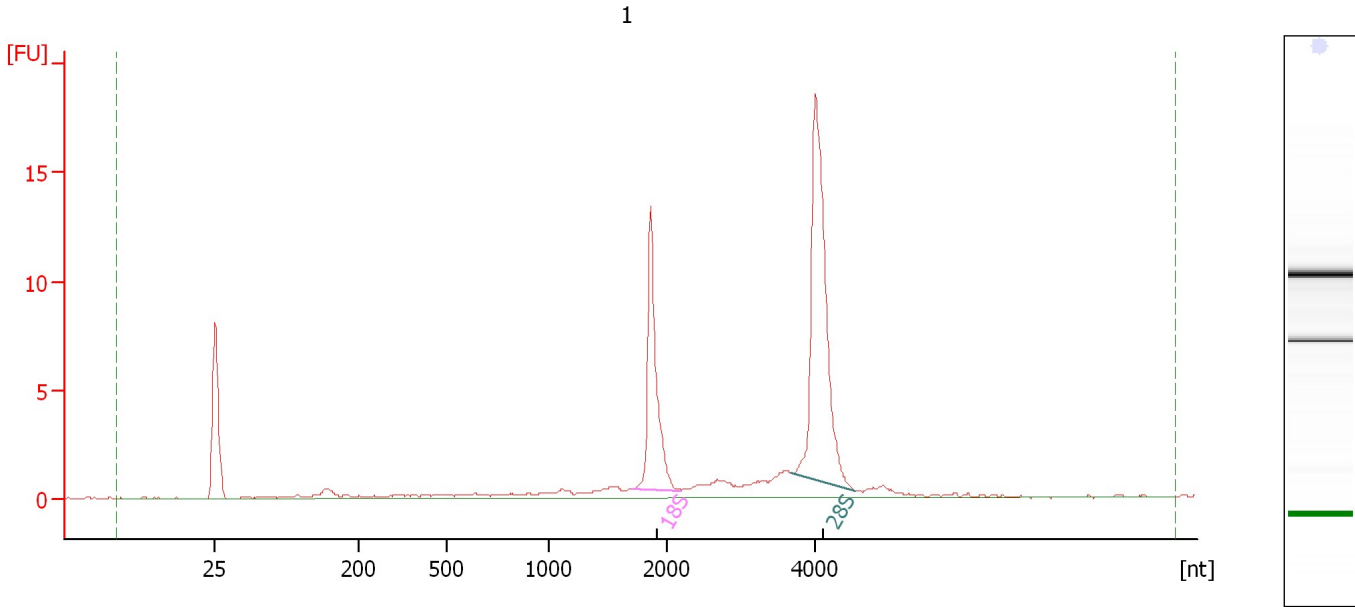
**Overall Results for Ladder**

RNA Area:	196.4	Result Flagging Color:	<span style="background-color: #ADD8E6; border: 1px solid black; display: inline-block; width: 20px; height: 10px;"></span>
RNA Concentration:	150 ng/μl	Result Flagging Label:	All Other Samples

Assay Class: Eukaryote Total RNA Nano  
Data Path: C:\...ents and Settings\Bioanalyzer\2012-07-26\2012-07-26\_002.xad

Created: 7/26/2012 11:24:08 AM  
Modified: 7/26/2012 11:50:09 AM

**Electropherogram Summary Continued ...**



**Overall Results for sample 1 : 1**

RNA Area:	62.5	RNA Integrity Number (RIN):	9.9 (B.02.08)
RNA Concentration:	48 ng/μl	Result Flagging Color:	<span style="background-color: #ccccff; border: 1px solid black; display: inline-block; width: 20px; height: 10px;"></span>
rRNA Ratio [28s / 18s]:	1.9	Result Flagging Label:	RIN: 9.90

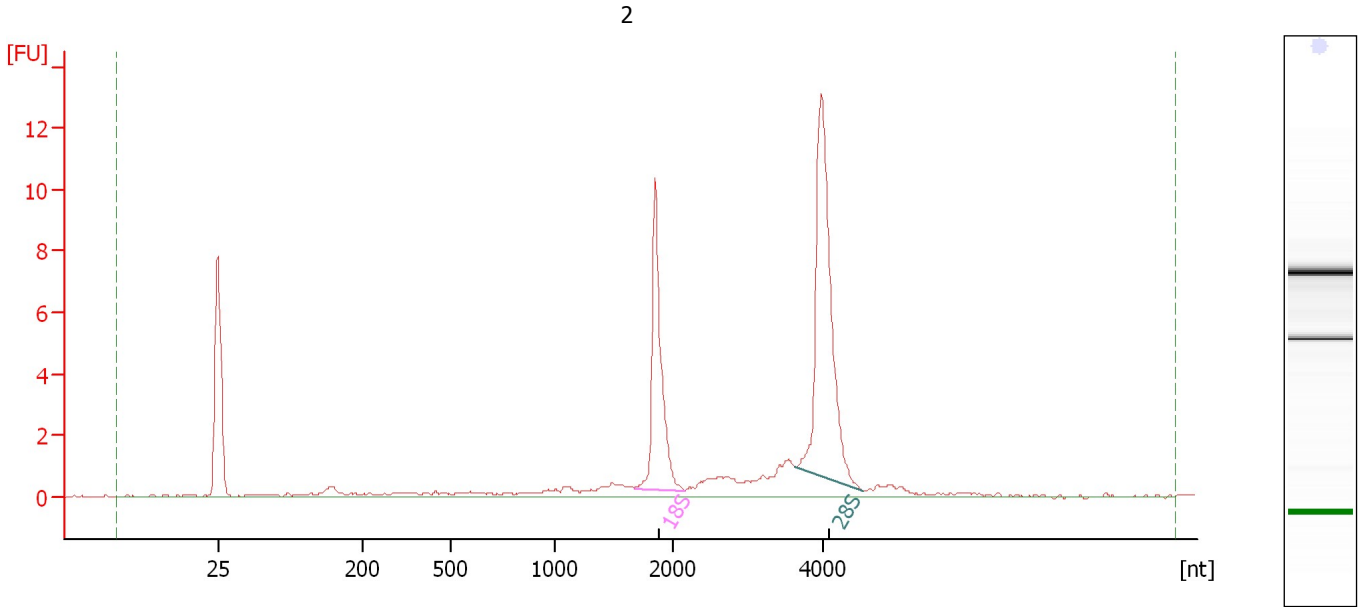
**Fragment table for sample 1 : 1**

Name	Start Size [nt]	End Size [nt]	Area	% of total Area
18S	1,719	2,204	13.7	21.8
28S	3,680	4,539	26.1	41.7

Assay Class: Eukaryote Total RNA Nano  
Data Path: C:\...ents and Settings\Bioanalyzer\2012-07-26\2012-07-26\_002.xad

Created: 7/26/2012 11:24:08 AM  
Modified: 7/26/2012 11:50:09 AM

**Electropherogram Summary Continued ...**



**Overall Results for sample 2 : 2**

RNA Area: 48.6                      RNA Integrity Number (RIN): 9.7 (B.02.08)  
RNA Concentration: 37 ng/μl              Result Flagging Color:   
rRNA Ratio [28s / 18s]: 1.8              Result Flagging Label: RIN: 9.70

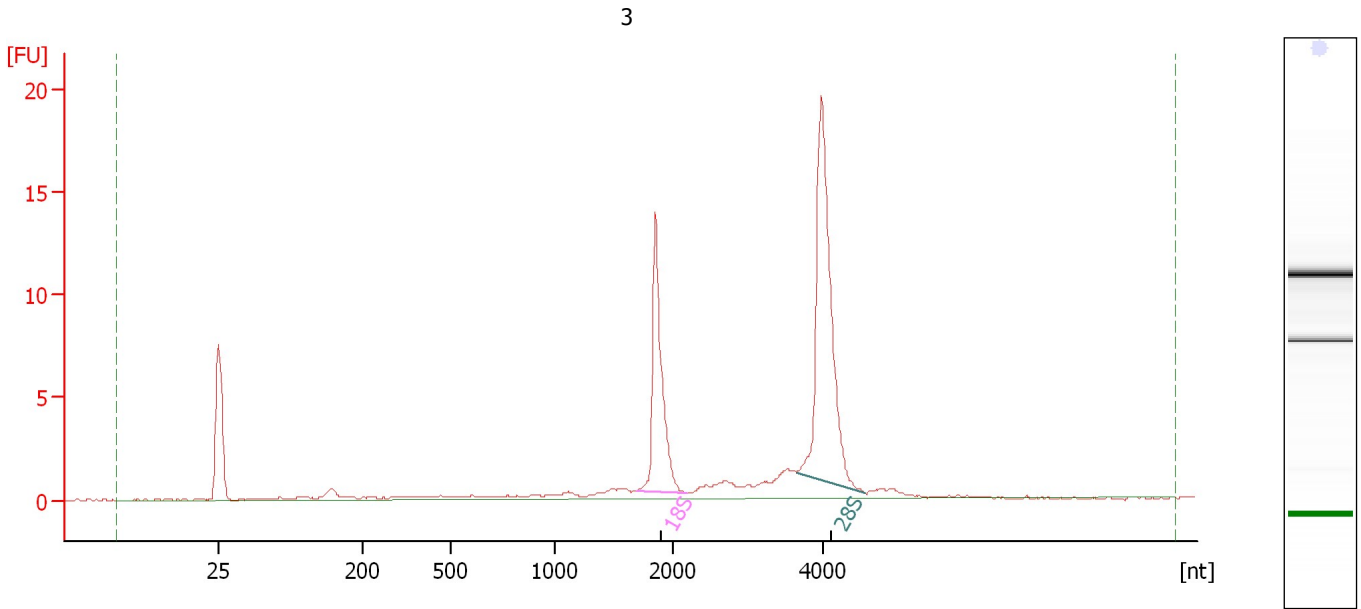
**Fragment table for sample 2 : 2**

Name	Start Size [nt]	End Size [nt]	Area	% of total Area
18S	1,678	2,179	10.6	21.9
28S	3,632	4,543	18.8	38.6

Assay Class: Eukaryote Total RNA Nano  
Data Path: C:\...ents and Settings\Bioanalyzer\2012-07-26\2012-07-26\_002.xad

Created: 7/26/2012 11:24:08 AM  
Modified: 7/26/2012 11:50:09 AM

**Electropherogram Summary Continued ...**



**Overall Results for sample 3 : 3**

RNA Area: 64.9                      RNA Integrity Number (RIN): 9.8 (B.02.08)  
RNA Concentration: 50 ng/μl              Result Flagging Color:   
rRNA Ratio [28s / 18s]: 1.8              Result Flagging Label: RIN: 9.80

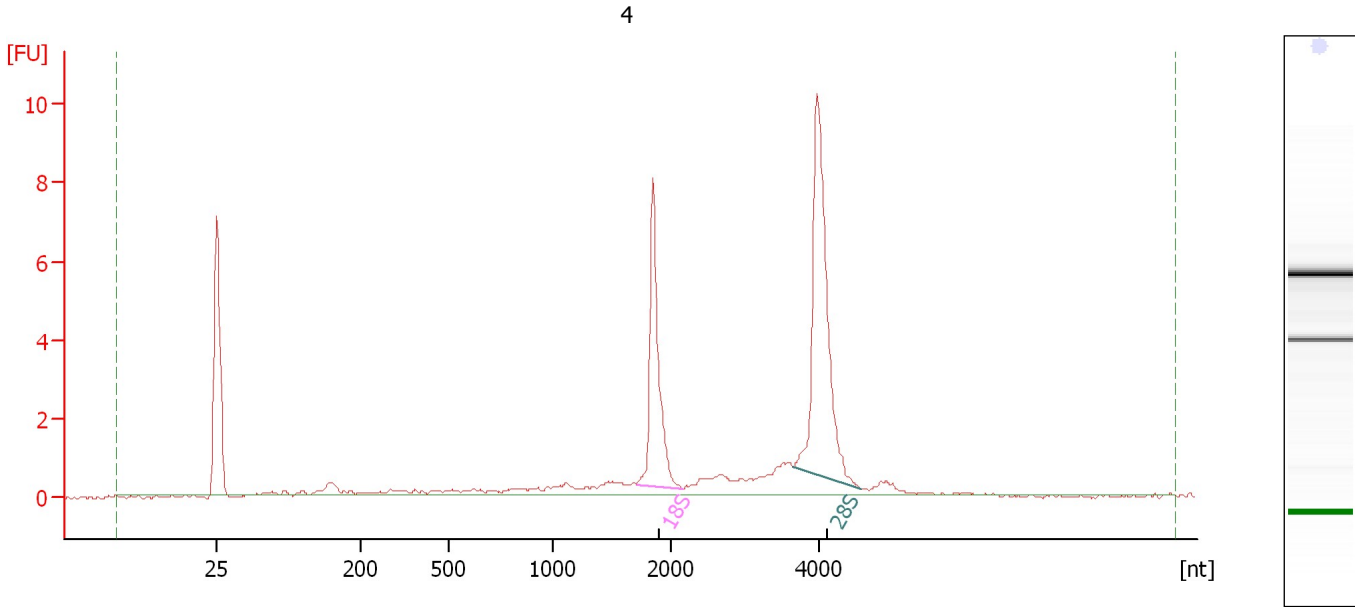
**Fragment table for sample 3 : 3**

Name	Start Size [nt]	End Size [nt]	Area	% of total Area
18S	1,696	2,208	14.7	22.6
28S	3,660	4,572	27.1	41.8

Assay Class: Eukaryote Total RNA Nano  
Data Path: C:\...ents and Settings\Bioanalyzer\2012-07-26\2012-07-26\_002.xad

Created: 7/26/2012 11:24:08 AM  
Modified: 7/26/2012 11:50:09 AM

**Electropherogram Summary Continued ...**



**Overall Results for sample 4 : 4**

RNA Area:	39.0	RNA Integrity Number (RIN):	9.2 (B.02.08)
RNA Concentration:	30 ng/μl	Result Flagging Color:	<span style="background-color: #ccccff; border: 1px solid black; display: inline-block; width: 20px; height: 10px;"></span>
rRNA Ratio [28s / 18s]:	1.7	Result Flagging Label:	RIN: 9.20

**Fragment table for sample 4 : 4**

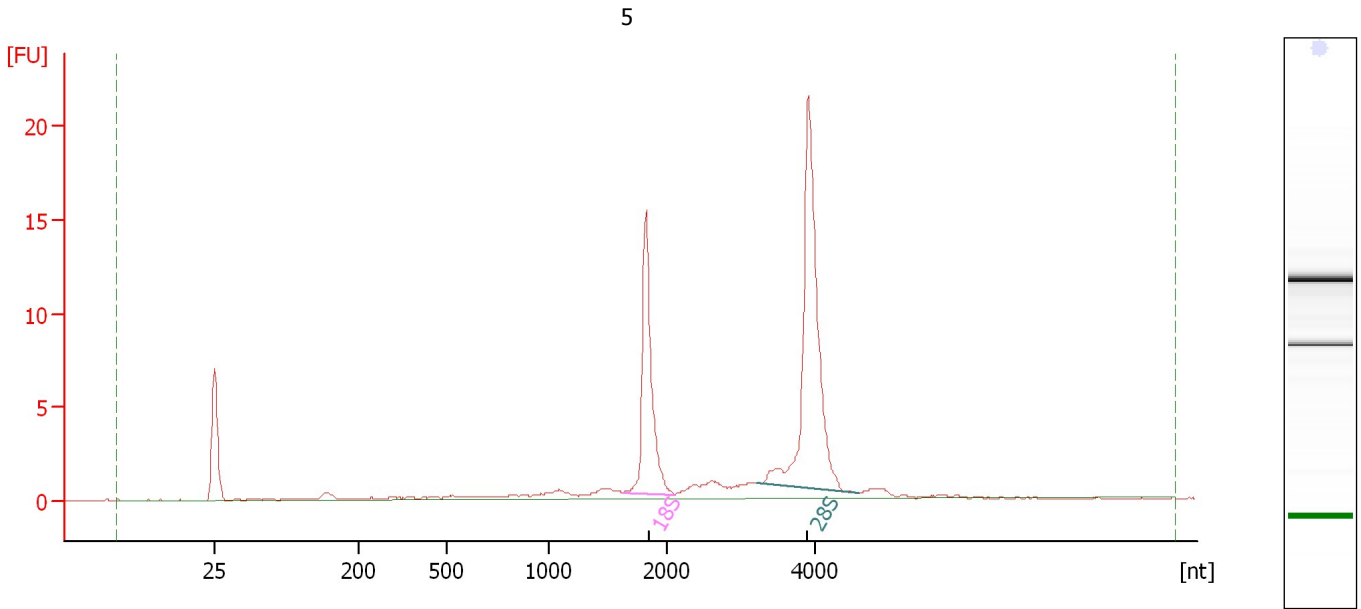
Name	Start Size [nt]	End Size [nt]	Area	% of total Area
18S	1,713	2,178	8.2	21.0
28S	3,648	4,547	13.9	35.6



Assay Class: Eukaryote Total RNA Nano  
Data Path: C:\...ents and Settings\Bioanalyzer\2012-07-26\2012-07-26\_002.xad

Created: 7/26/2012 11:24:08 AM  
Modified: 7/26/2012 11:50:09 AM

**Electropherogram Summary Continued ...**



**Overall Results for sample 5 : 5**

RNA Area: 69.3                      RNA Integrity Number (RIN): 9.9 (B.02.08)  
RNA Concentration: 53 ng/μl              Result Flagging Color:   
rRNA Ratio [28s / 18s]: 2.0              Result Flagging Label: RIN: 9.90

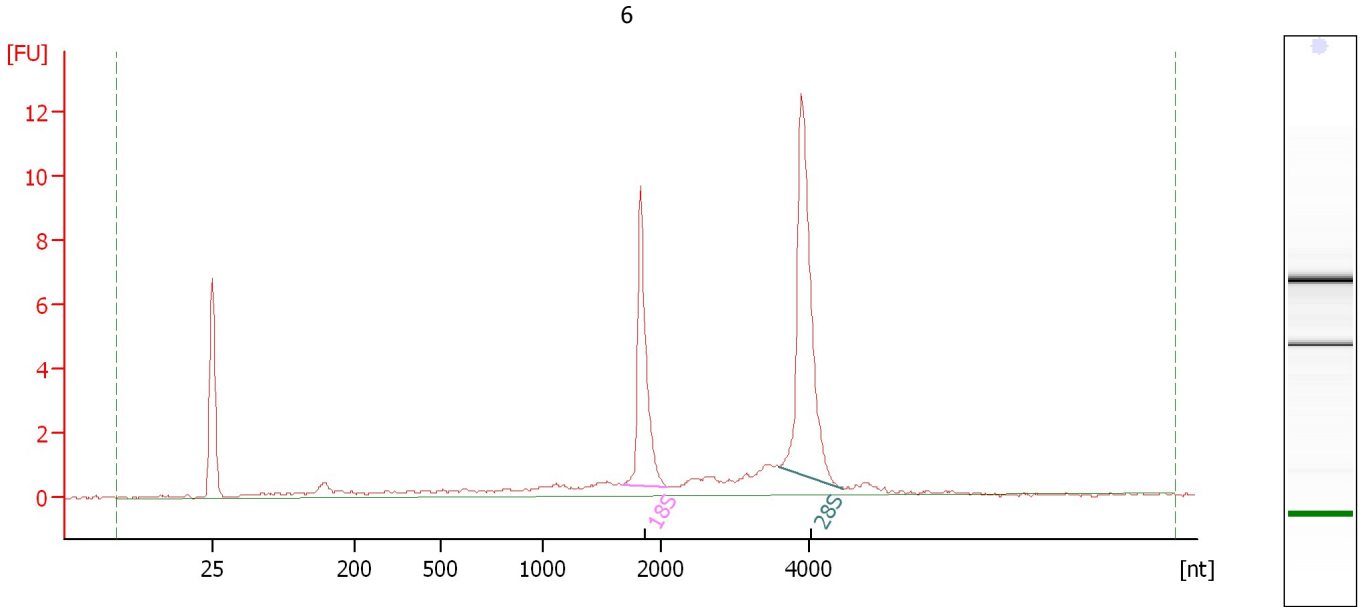
**Fragment table for sample 5 : 5**

Name	Start Size [nt]	End Size [nt]	Area	% of total Area
18S	1,636	2,118	15.8	22.9
28S	3,207	4,582	31.4	45.3

Assay Class: Eukaryote Total RNA Nano  
Data Path: C:\...ents and Settings\Bioanalyzer\2012-07-26\2012-07-26\_002.xad

Created: 7/26/2012 11:24:08 AM  
Modified: 7/26/2012 11:50:09 AM

**Electropherogram Summary Continued ...**



**Overall Results for sample 6 : 6**

RNA Area:	49.3	RNA Integrity Number (RIN):	9.2 (B.02.08)
RNA Concentration:	38 ng/μl	Result Flagging Color:	<span style="background-color: #ccccff; border: 1px solid black; display: inline-block; width: 20px; height: 10px;"></span>
rRNA Ratio [28s / 18s]:	1.7	Result Flagging Label:	RIN: 9.20

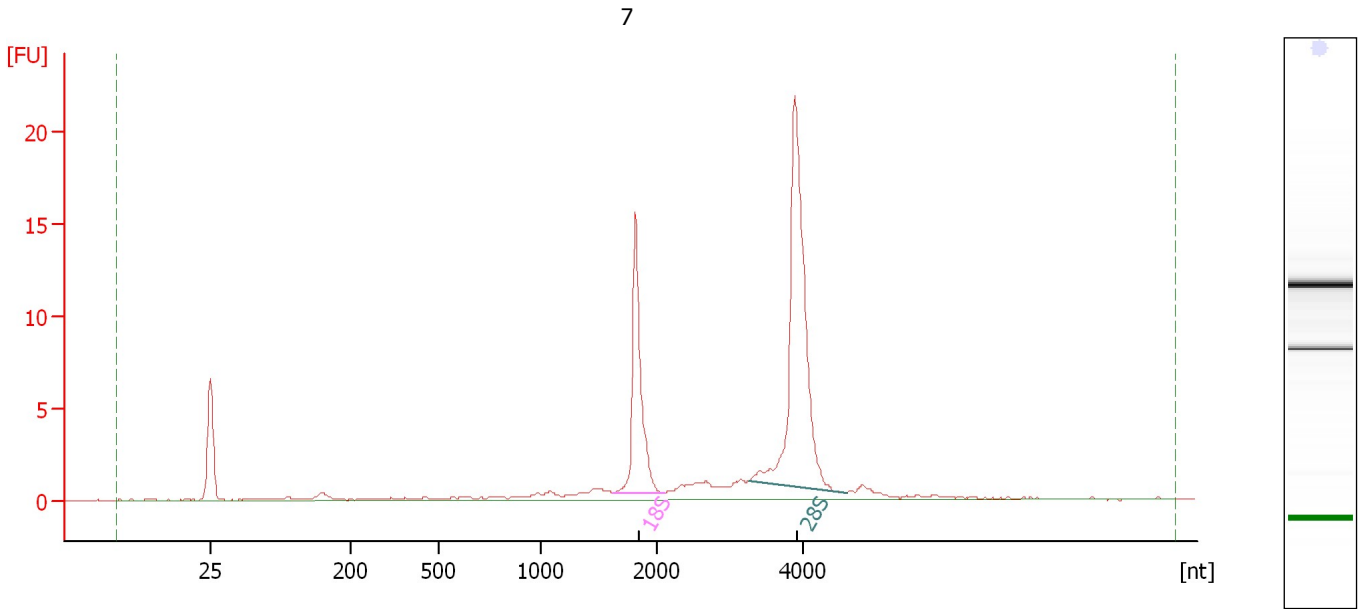
**Fragment table for sample 6 : 6**

Name	Start Size [nt]	End Size [nt]	Area	% of total Area
18S	1,677	2,099	9.6	19.5
28S	3,598	4,478	16.6	33.6

Assay Class: Eukaryote Total RNA Nano  
Data Path: C:\...ents and Settings\Bioanalyzer\2012-07-26\2012-07-26\_002.xad

Created: 7/26/2012 11:24:08 AM  
Modified: 7/26/2012 11:50:09 AM

**Electropherogram Summary Continued ...**



**Overall Results for sample 7 : 7**

RNA Area:	74.7	RNA Integrity Number (RIN):	10 (B.02.08)
RNA Concentration:	57 ng/μl	Result Flagging Color:	<span style="background-color: #ccccff; border: 1px solid black; display: inline-block; width: 20px; height: 10px;"></span>
rRNA Ratio [28s / 18s]:	2.2	Result Flagging Label:	RIN:10

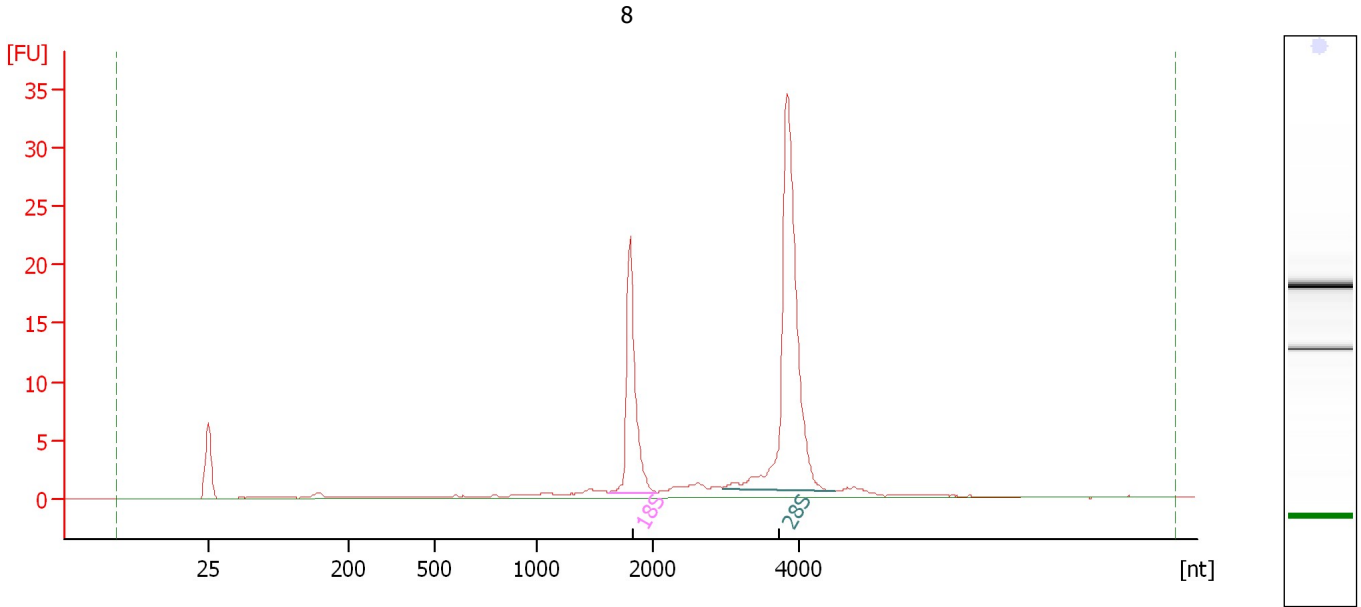
**Fragment table for sample 7 : 7**

Name	Start Size [nt]	End Size [nt]	Area	% of total Area
18S	1,627	2,110	15.6	20.9
28S	3,254	4,586	33.8	45.2

Assay Class: Eukaryote Total RNA Nano  
Data Path: C:\...ents and Settings\Bioanalyzer\2012-07-26\2012-07-26\_002.xad

Created: 7/26/2012 11:24:08 AM  
Modified: 7/26/2012 11:50:09 AM

**Electropherogram Summary Continued ...**



**Overall Results for sample 8 : 8**

RNA Area: 106.7                      RNA Integrity Number (RIN): 10 (B.02.08)  
RNA Concentration: 82 ng/μl              Result Flagging Color:   
rRNA Ratio [28s / 18s]: 2.3              Result Flagging Label: RIN:10

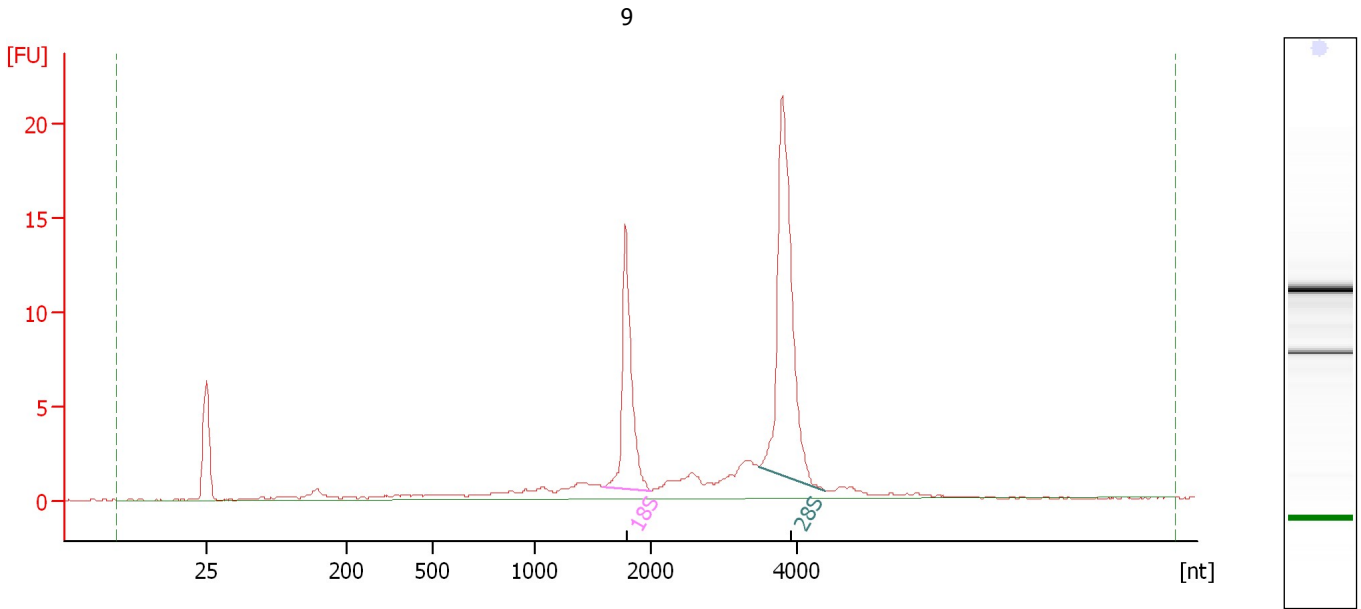
**Fragment table for sample 8 : 8**

Name	Start Size [nt]	End Size [nt]	Area	% of total Area
18S	1,623	2,078	22.0	20.7
28S	2,965	4,491	51.6	48.4

Assay Class: Eukaryote Total RNA Nano  
Data Path: C:\...ents and Settings\Bioanalyzer\2012-07-26\2012-07-26\_002.xad

Created: 7/26/2012 11:24:08 AM  
Modified: 7/26/2012 11:50:09 AM

**Electropherogram Summary Continued ...**



**Overall Results for sample 9 : 9**

RNA Area: 84.1                      RNA Integrity Number (RIN): 9.3 (B.02.08)  
RNA Concentration: 64 ng/μl              Result Flagging Color:   
rRNA Ratio [28s / 18s]: 2.0              Result Flagging Label: RIN: 9.30

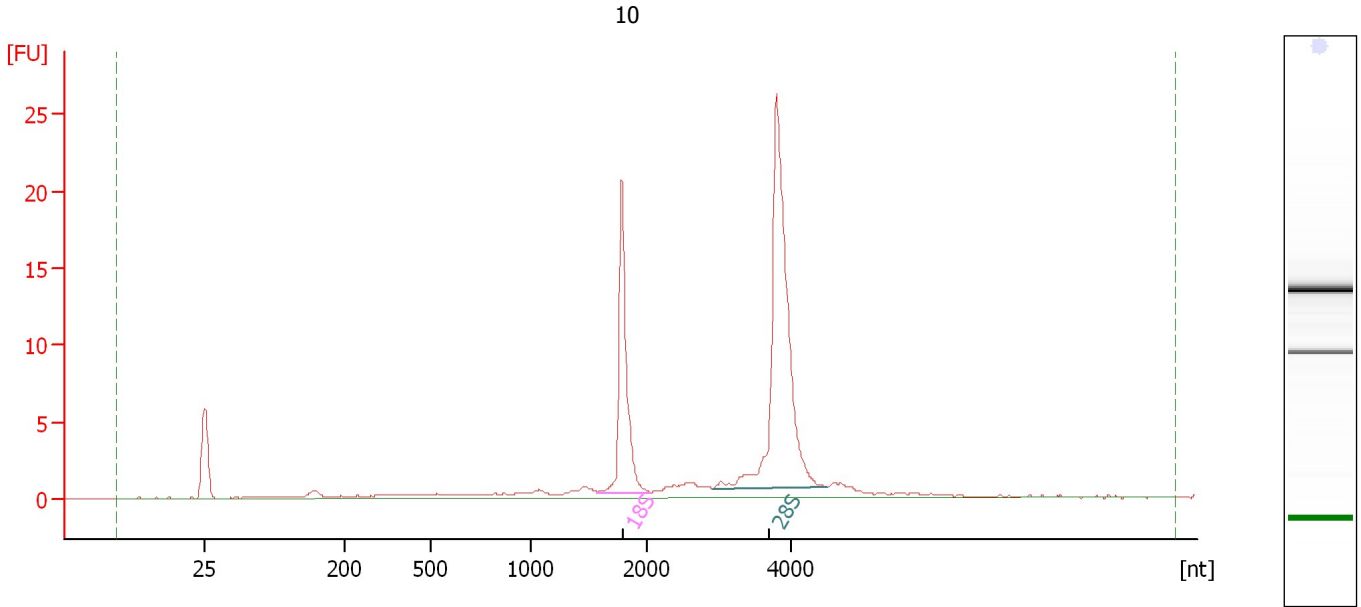
**Fragment table for sample 9 : 9**

Name	Start Size [nt]	End Size [nt]	Area	% of total Area
18S	1,593	2,018	15.3	18.2
28S	3,489	4,393	30.3	36.0

Assay Class: Eukaryote Total RNA Nano  
 Data Path: C:\...ents and Settings\Bioanalyzer\2012-07-26\2012-07-26\_002.xad

Created: 7/26/2012 11:24:08 AM  
 Modified: 7/26/2012 11:50:09 AM

**Electropherogram Summary Continued ...**



**Overall Results for sample 10 : 10**

RNA Area:	91.0	RNA Integrity Number (RIN):	10 (B.02.08)
RNA Concentration:	69 ng/μl	Result Flagging Color:	<span style="background-color: #ccccff; border: 1px solid black; display: inline-block; width: 20px; height: 10px;"></span>
rRNA Ratio [28s / 18s]:	2.2	Result Flagging Label:	RIN:10

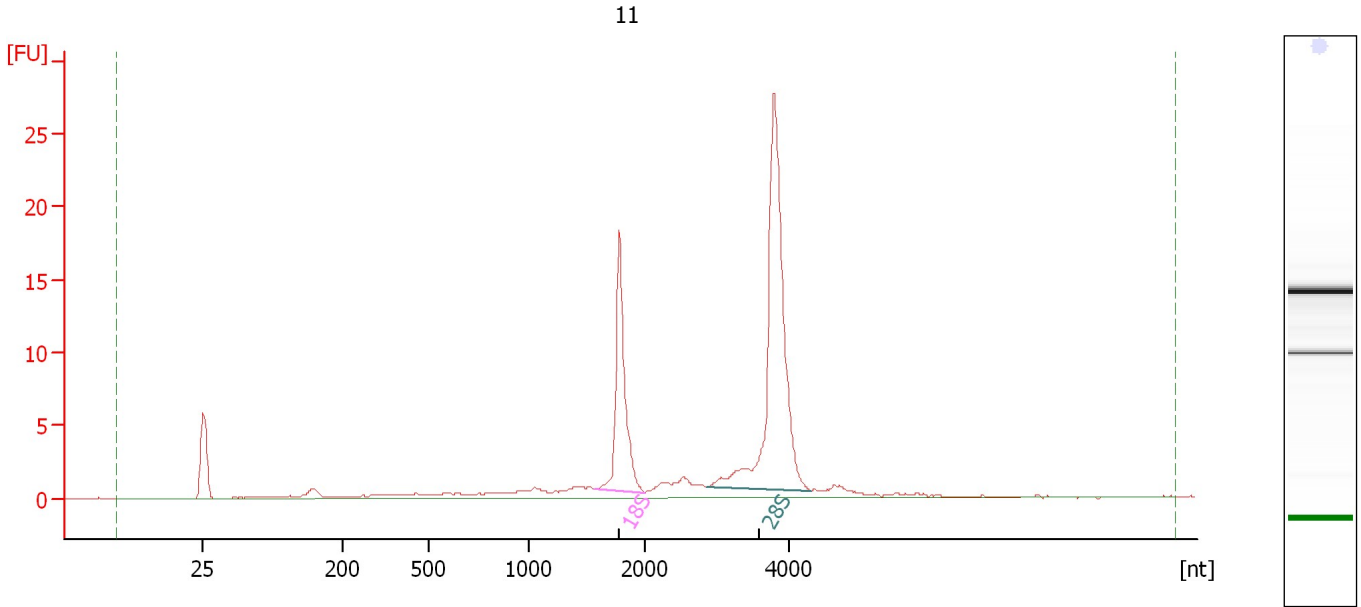
**Fragment table for sample 10 : 10**

Name	Start Size [nt]	End Size [nt]	Area	% of total Area
18S	1,580	2,058	19.1	21.0
28S	2,907	4,487	42.5	46.7

Assay Class: Eukaryote Total RNA Nano  
Data Path: C:\...ents and Settings\Bioanalyzer\2012-07-26\2012-07-26\_002.xad

Created: 7/26/2012 11:24:08 AM  
Modified: 7/26/2012 11:50:09 AM

**Electropherogram Summary Continued ...**



**Overall Results for sample 11 : 11**

RNA Area:	98.5	RNA Integrity Number (RIN):	9.8 (B.02.08)
RNA Concentration:	75 ng/μl	Result Flagging Color:	<span style="background-color: #ccccff; border: 1px solid black; display: inline-block; width: 20px; height: 10px;"></span>
rRNA Ratio [28s / 18s]:	2.4	Result Flagging Label:	RIN: 9.80

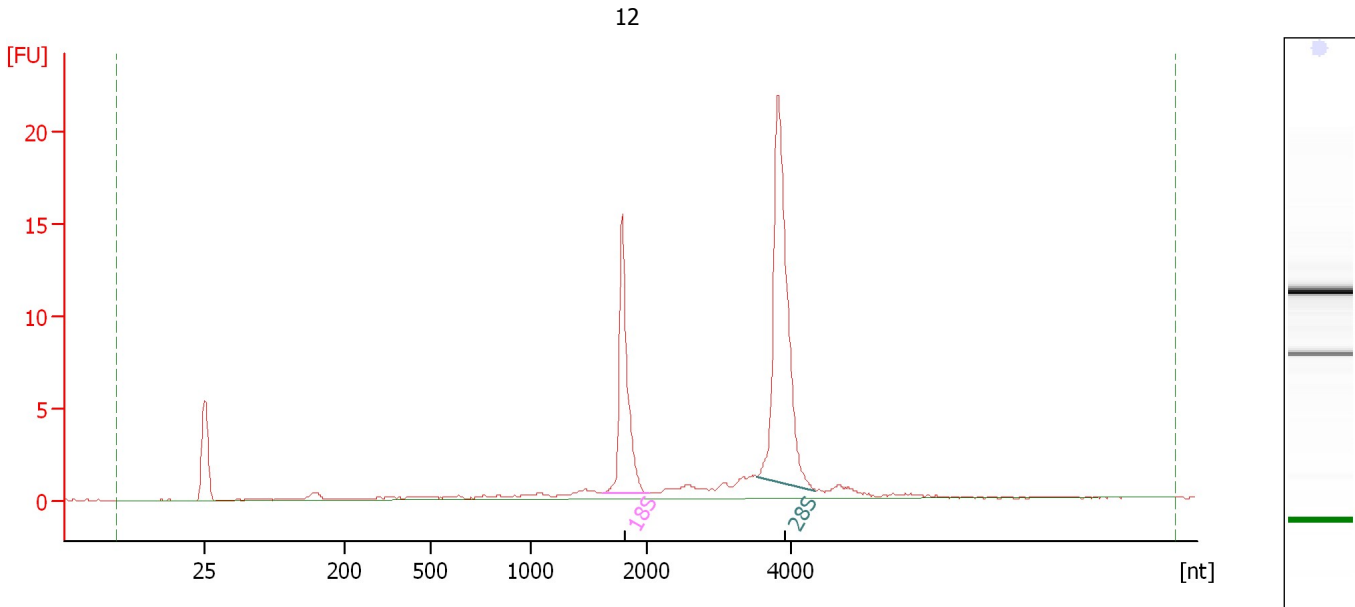
**Fragment table for sample 11 : 11**

Name	Start Size [nt]	End Size [nt]	Area	% of total Area
18S	1,568	2,012	19.1	19.4
28S	2,877	4,285	45.3	46.0

Assay Class: Eukaryote Total RNA Nano  
Data Path: C:\...ents and Settings\Bioanalyzer\2012-07-26\2012-07-26\_002.xad

Created: 7/26/2012 11:24:08 AM  
Modified: 7/26/2012 11:50:09 AM

**Electropherogram Summary Continued ...**



**Overall Results for sample 12 : 12**

RNA Area:	70.5	RNA Integrity Number (RIN):	10 (B.02.08)
RNA Concentration:	54 ng/μl	Result Flagging Color:	<span style="background-color: #ccccff; border: 1px solid black; display: inline-block; width: 20px; height: 10px;"></span>
rRNA Ratio [28s / 18s]:	2.0	Result Flagging Label:	RIN:10

**Fragment table for sample 12 : 12**

Name	Start Size [nt]	End Size [nt]	Area	% of total Area
18S	1,626	2,043	15.4	21.9
28S	3,507	4,326	30.9	43.9



Assay Class: Eukaryote Total RNA Nano  
Data Path: C:\...ents and Settings\Bioanalyzer\2012-07-26\2012-07-26\_002.xad

Created: 7/26/2012 11:24:08 AM  
Modified: 7/26/2012 11:50:09 AM

**Gel Image**

