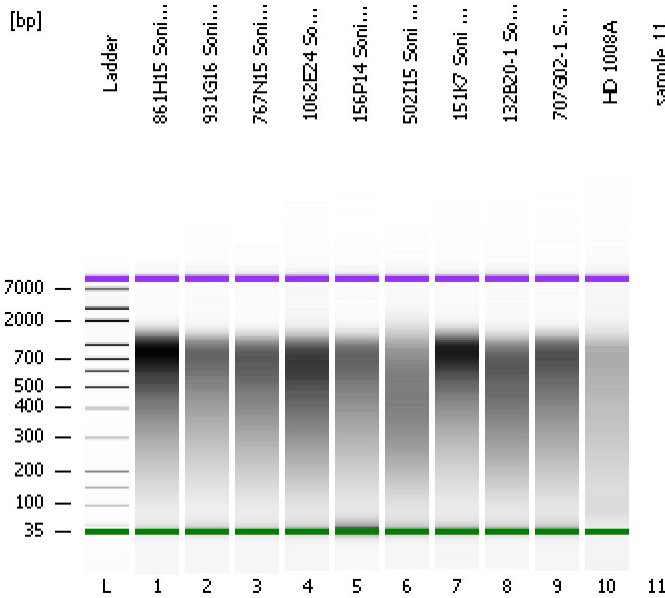


Assay Class: High Sensitivity DNA Assay
Data Path: C:\...ents and Settings\Bioanalyzer\2012-07-26\2012-07-26_003.xad

Created: 7/26/2012 12:59:32 PM
Modified: 7/26/2012 1:39:13 PM

Electrophoresis File Run Summary



Instrument Information:

Instrument Name: DE13701086 Firmware: C.01.069
Serial#: DE13701086 Type: G2938B

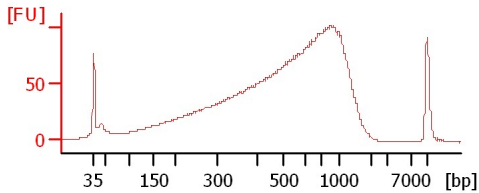
Assay Information:

Assay Origin Path: C:\Program Files\Agilent\2100 bioanalyzer\2100 expert\assays\dsDNA\High Sensitivity DNA.xsy
Assay Class: High Sensitivity DNA Assay
Version: 1.03
Assay Comments: Copyright © 2003-2010 Agilent Technologies

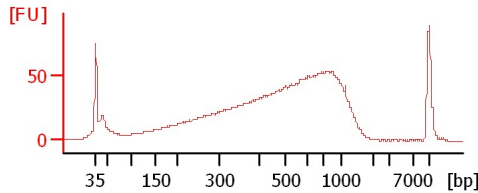
Chip Information:

Chip Lot #:
Reagent Kit Lot #:
Chip Comments:

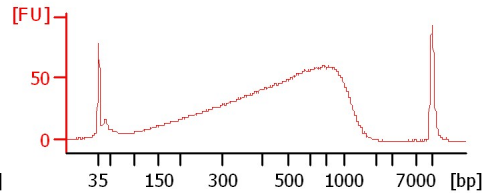
861H15 Soni 4+3+2Cycles 1:6



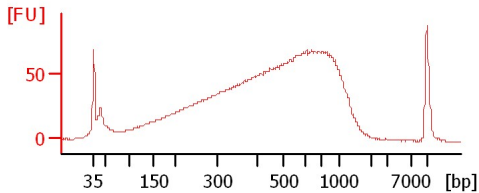
931G16 Soni 4+3+2Cycles 1:6



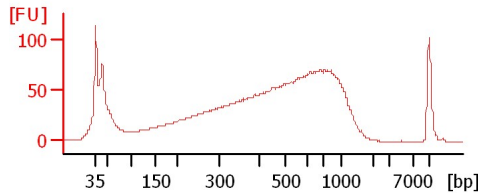
767N15 Soni 4+3+3Cycles 1:6



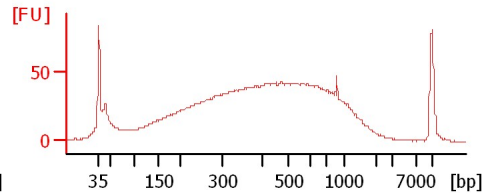
1062E24 Soni 4+3+3Cycles 1:6



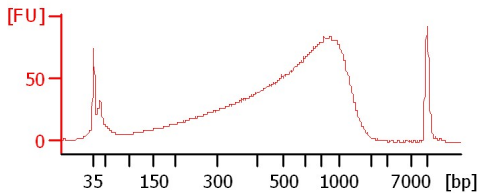
156P14 Soni 4+3+2Cycles 1:6



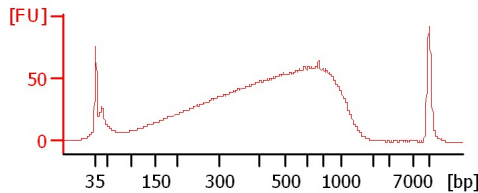
502I15 Soni 4+3+4Cycles 1:6



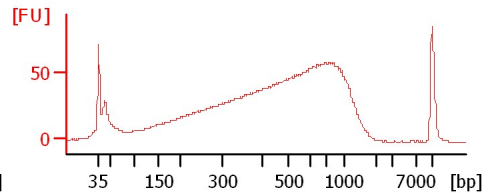
151K7 Soni 4+3+2Cycles 1:6



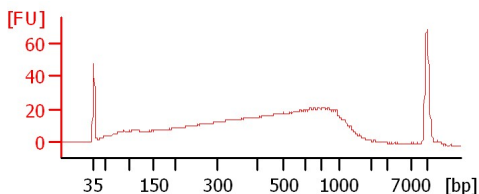
132B20-1 Soni 4+3+2Cycles 1:6



707G02-1 Soni 4+3+2Cycles 1:6



HD 1008A



Assay Class: High Sensitivity DNA Assay
 Data Path: C:\...ents and Settings\Bioanalyzer\2012-07-26\2012-07-26_003.xad

Created: 7/26/2012 12:59:32 PM
 Modified: 7/26/2012 1:39:13 PM

Electrophoresis File Run Summary (Chip Summary)

Sample Name	Sample Comment	Rest. Digest	Status	Observation	Result Label	Result Color
861H15 Soni 4+3+2Cycles 1:6		<input type="checkbox"/>	✓			
931G16 Soni 4+3+2Cycles 1:6		<input type="checkbox"/>	✓			
767N15 Soni 4+3+3Cycles 1:6		<input type="checkbox"/>	✓			
1062E24 Soni 4+3+3Cycles 1:6		<input type="checkbox"/>	✓			
156P14 Soni 4+3+2Cycles 1:6		<input type="checkbox"/>	✓			
502I15 Soni 4+3+4Cycles 1:6		<input type="checkbox"/>	✓			
151K7 Soni 4+3+2Cycles 1:6		<input type="checkbox"/>	✓			
132B20-1 Soni 4+3+2Cycles 1:6		<input type="checkbox"/>	✓			
707G02-1 Soni 4+3+2Cycles 1:6		<input type="checkbox"/>	✓			
HD 1008A		<input type="checkbox"/>	✓			
sample 11		<input type="checkbox"/>				
Ladder		<input type="checkbox"/>	✓			

Chip Lot #

Reagent Kit Lot #

Chip Comments :

Assay Class: High Sensitivity DNA Assay
Data Path: C:\...ents and Settings\Bioanalyzer\2012-07-26\2012-07-26_003.xad

Created: 7/26/2012 12:59:32 PM
Modified: 7/26/2012 1:39:13 PM

Electrophoresis Assay Details

General Analysis Settings

Number of Available Sample and Ladder Wells (Max.) : 12
Minimum Visible Range [s] : 32
Maximum Visible Range [s] : 138
Start Analysis Time Range [s] : 33
End Analysis Time Range [s] : 137.5
Ladder Concentration [pg/μl] : 1950
Uses Standard Area for Ladder Fragments
Lower Marker Concentration [pg/μl] : 125
Upper Marker Concentration [pg/μl] : 75
Used Upper Marker for Quantitation
Standard Curve Fit is Point to Point
Show Data Aligned to Lower and Upper Marker

Integrator Settings

Integration Start Time [s] : 33.05
Integration End Time [s] : 137
Slope Threshold : 0.8
Height Threshold [FU] : 5
Area Threshold : 0.1
Width Threshold [s] : 0.6
Baseline Plateau [s] : 0.5

Filter Settings

Filter Width [s] : 0.5
Polynomial Order : 4

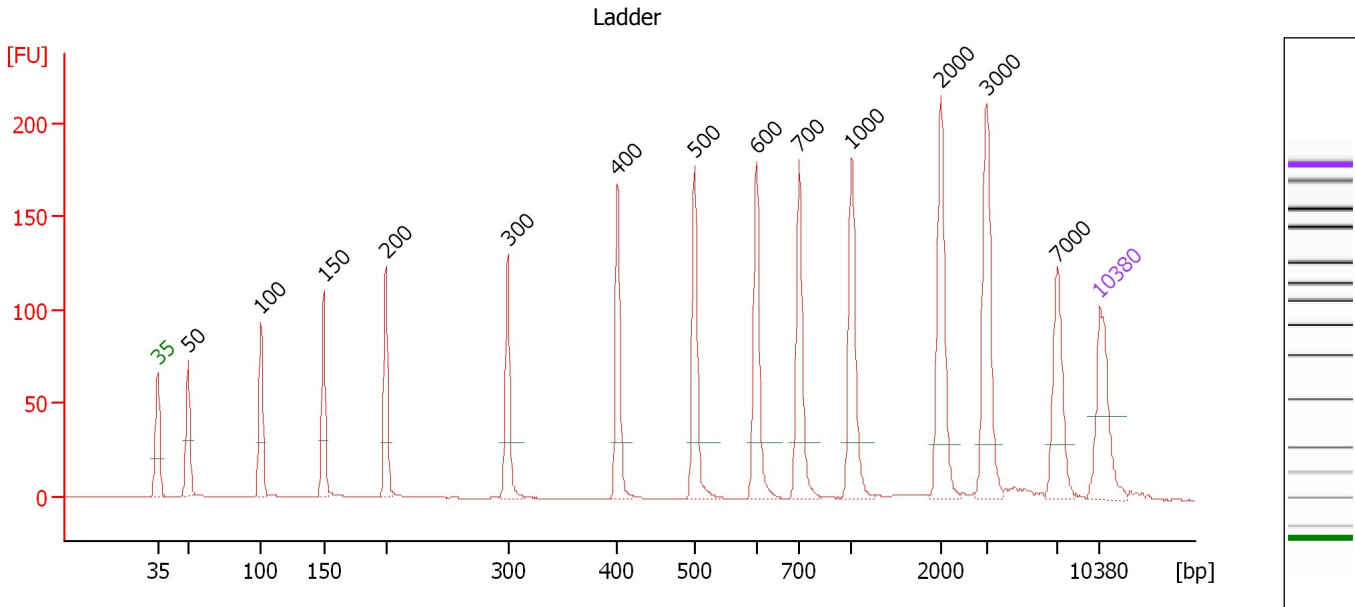
Ladder

Ladder Peak	Size	Area
1	35	160
2	50	210
3	100	208
4	150	221
5	200	242
6	300	270
7	400	305
8	500	306
9	600	336
10	700	321
11	1000	366
12	2000	413
13	3000	411
14	7000	400
15	10380	214

Assay Class: High Sensitivity DNA Assay
 Data Path: C:\...ents and Settings\Bioanalyzer\2012-07-26\2012-07-26_003.xad

Created: 7/26/2012 12:59:32 PM
 Modified: 7/26/2012 1:39:13 PM

Electropherogram Summary



Overall Results for Ladder

Noise: 0.1

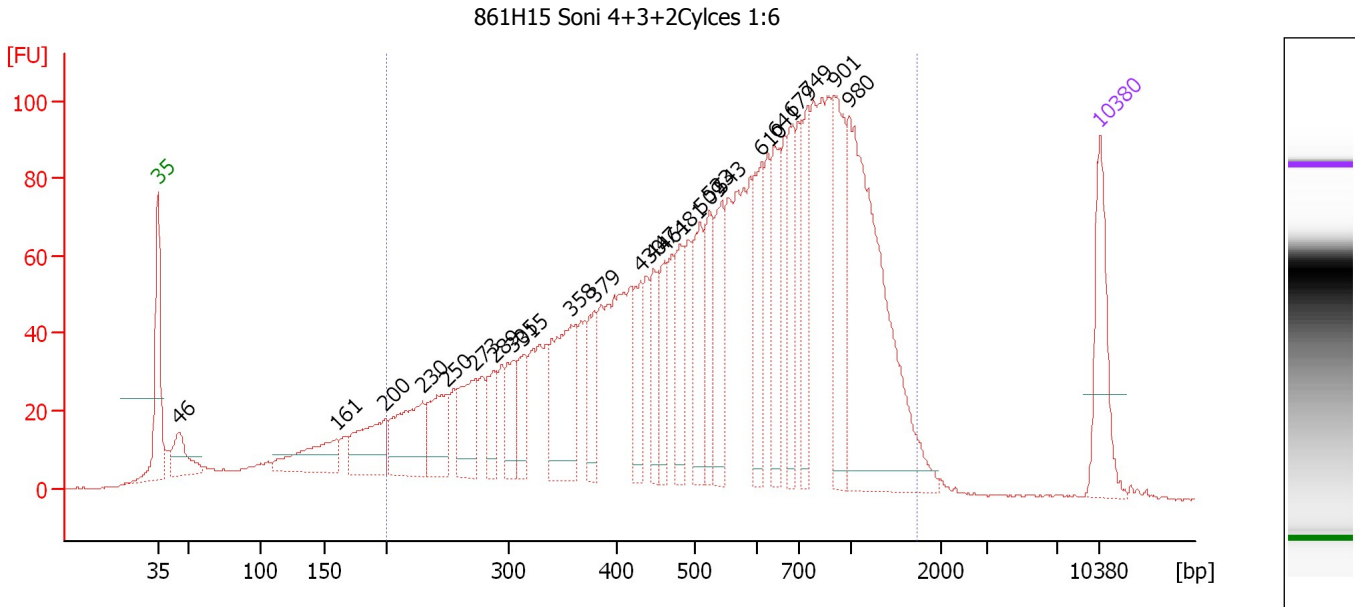
Peak table for Ladder

Peak	Size [bp]	Conc. [pg/µl]	Molarity [pmol/l]	Observations
1	35	125.00	5,411.3	Lower Marker
2	50	150.00	4,545.5	Ladder Peak
3	100	150.00	2,272.7	Ladder Peak
4	150	150.00	1,515.2	Ladder Peak
5	200	150.00	1,136.4	Ladder Peak
6	300	150.00	757.6	Ladder Peak
7	400	150.00	568.2	Ladder Peak
8	500	150.00	454.5	Ladder Peak
9	600	150.00	378.8	Ladder Peak
10	700	150.00	324.7	Ladder Peak
11	1,000	150.00	227.3	Ladder Peak
12	2,000	150.00	113.6	Ladder Peak
13	3,000	150.00	75.8	Ladder Peak
14	7,000	150.00	32.5	Ladder Peak
15	10,380	75.00	10.9	Upper Marker

Assay Class: High Sensitivity DNA Assay
 Data Path: C:\...ents and Settings\Bioanalyzer\2012-07-26\2012-07-26_003.xad

Created: 7/26/2012 12:59:32 PM
 Modified: 7/26/2012 1:39:13 PM

Electropherogram Summary Continued ...



Overall Results for sample 1 : 861H15 Soni 4+3+2Cycles 1:6

Number of peaks found: 24 Corr. Area 1: 2,713.8
 Noise: 0.2

Peak table for sample 1 : 861H15 Soni 4+3+2Cycles 1:6

Peak	Size [bp]	Conc. [pg/μl]	Molarity [pmol/l]	Observations
1	35	125.00	5,411.3	Lower Marker
2	46	58.71	1,953.9	
3	161	83.59	788.5	
4	200	88.49	671.8	
5	230	109.04	717.9	
6	250	76.40	462.4	
7	273	75.72	419.9	
8	289	47.23	247.8	
9	305	53.35	265.2	
10	315	49.21	237.0	
11	358	137.59	581.9	
12	379	57.13	228.5	
13	430	52.37	184.3	
14	447	51.24	173.8	
15	461	56.31	185.2	
16	481	60.12	189.4	
17	509	85.05	253.2	
18	523	69.36	200.9	
19	543	83.68	233.7	
20	610	73.36	182.2	
21	641	78.25	184.9	
22	679	72.67	162.3	
23	749	73.66	149.0	
24	901	110.94	186.6	
25	980	341.11	527.3	
26	10,380	75.00	10.9	Upper Marker

Assay Class: High Sensitivity DNA Assay
Data Path: C:\...ents and Settings\Bioanalyzer\2012-07-26\2012-07-26_003.xad

Created: 7/26/2012 12:59:32 PM
Modified: 7/26/2012 1:39:13 PM

Electropherogram Summary Continued ...

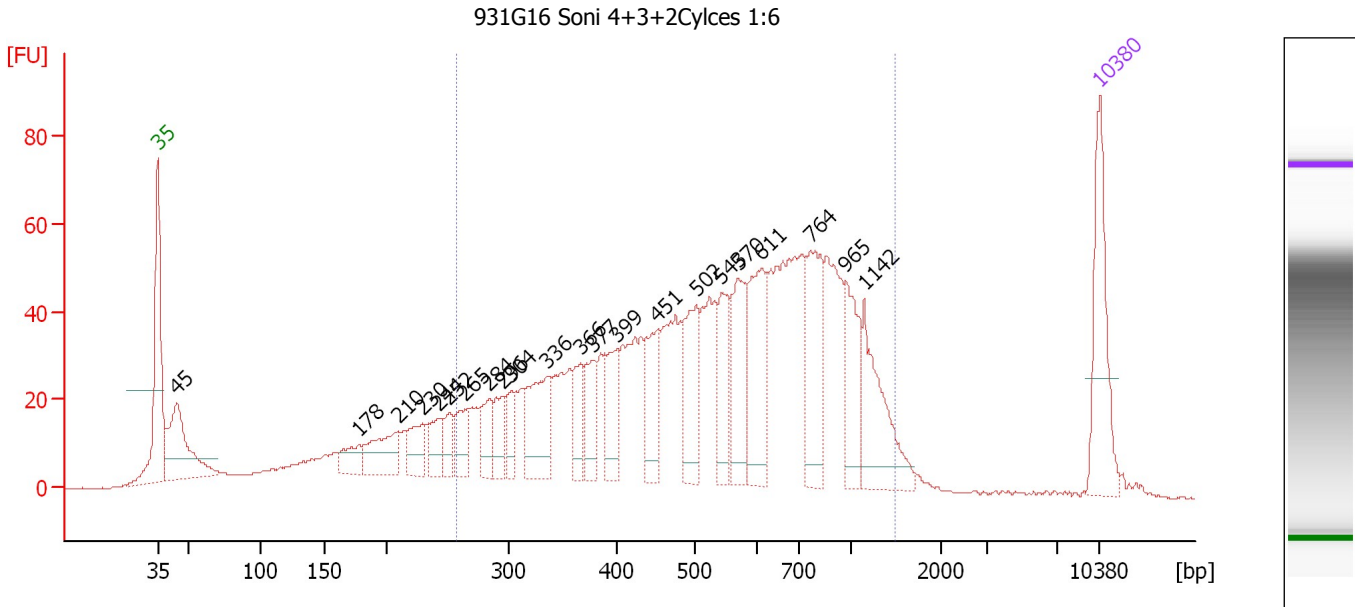
... Region table for sample 1 : **861H15 Soni 4+3+2Cycles 1:6**

From [bp]	To [bp]	Average Size [bp]	Molarity [pmol/l]	Conc. [pg/μl]	Corr. Area	% of Total	Size distribution in CV [%]	Color
200	1,732	628	10,662.0	3,196.25	2,713.8	89	49.6	■

Assay Class: High Sensitivity DNA Assay
 Data Path: C:\...ents and Settings\Bioanalyzer\2012-07-26\2012-07-26_003.xad

Created: 7/26/2012 12:59:32 PM
 Modified: 7/26/2012 1:39:13 PM

Electropherogram Summary Continued ...



Overall Results for sample 2 : 931G16 Soni 4+3+2Cycles 1:6

Number of peaks found: 22 Corr. Area 1: 1,456.7
 Noise: 0.1

Peak table for sample 2 : 931G16 Soni 4+3+2Cycles 1:6

Peak	Size [bp]	Conc. [pg/μl]	Molarity [pmol/l]	Observations
1	35	125.00	5,411.3	Lower Marker
2	45	126.84	4,313.1	
3	178	29.02	246.6	
4	210	56.53	408.3	
5	230	37.00	243.7	
6	244	30.56	189.8	
7	252	23.46	141.1	
8	265	34.26	195.7	
9	284	35.45	188.8	
10	296	31.39	160.8	
11	304	28.99	144.7	
12	336	82.72	373.0	
13	366	37.85	156.6	
14	377	40.38	162.1	
15	399	44.34	168.2	
16	451	59.20	198.9	
17	502	68.71	207.5	
18	543	53.23	148.6	
19	570	69.32	184.2	
20	611	94.12	233.2	
21	764	87.85	174.3	
22	965	59.00	92.7	
23	1,142	84.32	111.9	
24	10,380	75.00	10.9	Upper Marker

Assay Class: High Sensitivity DNA Assay
Data Path: C:\...ents and Settings\Bioanalyzer\2012-07-26\2012-07-26_003.xad

Created: 7/26/2012 12:59:32 PM
Modified: 7/26/2012 1:39:13 PM

Electropherogram Summary Continued ...

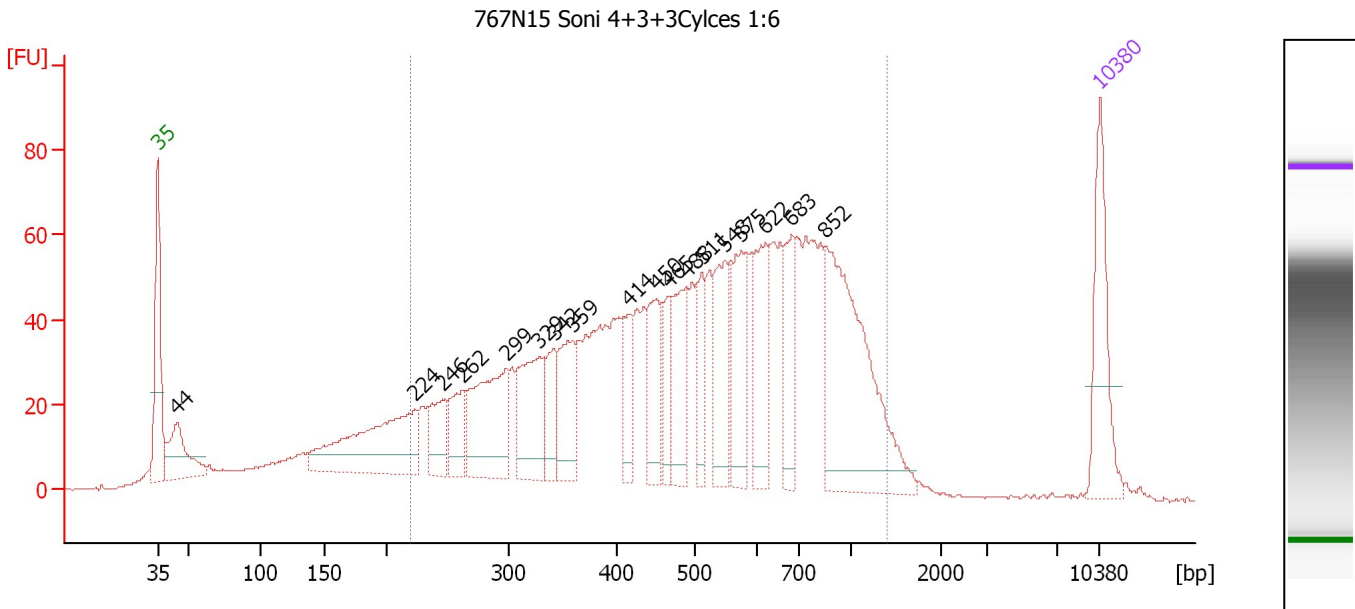
... Region table for sample 2 : 931G16 Soni 4+3+2Cycles 1:6

From [bp]	To [bp]	Average Size [bp]	Molarity [pmol/l]	Conc. [pg/μl]	Corr. Area	% of Total	Size distribution in CV [%]	Color
257	1,475	595	5,682.7	1,774.92	1,456.7	78	42.9	■

Assay Class: High Sensitivity DNA Assay
 Data Path: C:\...ents and Settings\Bioanalyzer\2012-07-26\2012-07-26_003.xad

Created: 7/26/2012 12:59:32 PM
 Modified: 7/26/2012 1:39:13 PM

Electropherogram Summary Continued ...



Overall Results for sample 3 : 767N15 Soni 4+3+3Cycles 1:6

Number of peaks found: 18 Corr. Area 1: 1,828.2
 Noise: 0.2

Peak table for sample 3 : 767N15 Soni 4+3+3Cycles 1:6

Peak	Size [bp]	Conc. [pg/μl]	Molarity [pmol/l]	Observations
1	35	125.00	5,411.3	Lower Marker
2	44	84.86	2,891.4	
3	224	186.55	1,262.1	
4	246	51.08	314.1	
5	262	51.35	296.7	
6	299	139.01	704.7	
7	329	104.37	480.6	
8	342	47.10	208.5	
9	359	75.55	319.1	
10	414	44.84	164.2	
11	450	69.25	233.3	
12	465	41.38	134.8	
13	488	77.98	241.9	
14	511	44.26	131.1	
15	548	75.50	208.7	
16	575	76.10	200.5	
17	622	86.46	210.8	
18	683	64.97	144.2	
19	852	240.01	426.7	
20	10,380	75.00	10.9	Upper Marker

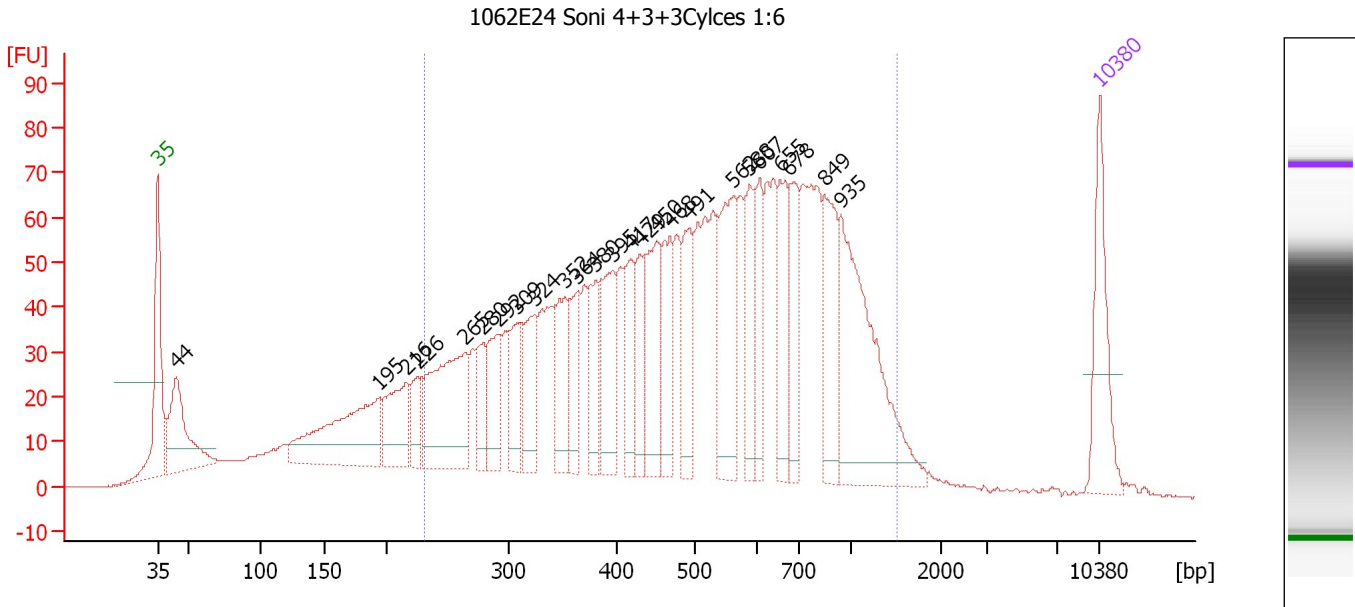
Region table for sample 3 : 767N15 Soni 4+3+3Cycles 1:6

From [bp]	To [bp]	Average Size [bp]	Molarity [pmol/l]	Conc. [pg/μl]	Corr. Area	% of Total	Size distribution in CV [%]	Color
221	1,399	555	7,548.2	2,152.77	1,828.2	82	43.5	Blue

Assay Class: High Sensitivity DNA Assay
 Data Path: C:\...ents and Settings\Bioanalyzer\2012-07-26\2012-07-26_003.xad

Created: 7/26/2012 12:59:32 PM
 Modified: 7/26/2012 1:39:13 PM

Electropherogram Summary Continued ...



Overall Results for sample 4 : 1062E24 Soni 4+3+3Cycles 1:6

Number of peaks found: 25 Corr. Area 1: 2,144.5
 Noise: 0.1

Peak table for sample 4 : 1062E24 Soni 4+3+3Cycles 1:6

Peak	Size [bp]	Conc. [pg/μl]	Molarity [pmol/l]	Observations
1	35	125.00	5,411.3	Lower Marker
2	44	141.92	4,846.7	
3	195	188.15	1,465.3	
4	216	91.52	641.2	
5	226	44.06	294.9	
6	265	189.20	1,081.7	
7	280	51.52	279.2	
8	292	69.84	361.8	
9	309	59.41	291.3	
10	324	74.68	349.3	
11	352	74.64	320.8	
12	364	60.17	250.7	
13	380	61.99	247.3	
14	395	90.30	346.1	
15	417	61.28	222.6	
16	429	58.40	206.0	
17	450	102.61	345.7	
18	468	73.73	238.6	
19	491	80.06	247.0	
20	562	130.85	352.9	
21	588	64.21	165.4	
22	607	59.62	148.8	
23	655	79.17	183.1	
24	678	69.92	156.3	
25	849	92.43	165.0	
26	935	222.58	360.8	

Assay Class: High Sensitivity DNA Assay
Data Path: C:\...ents and Settings\Bioanalyzer\2012-07-26\2012-07-26_003.xad

Created: 7/26/2012 12:59:32 PM
Modified: 7/26/2012 1:39:13 PM

Electropherogram Summary Continued ...**... Peak table for sample 4 : 1062E24 Soni 4+3+3Cycles 1:6**

Peak	Size [bp]	Conc. [pg/ μ l]	Molarity [pmol/l]	Observations
27	10,380	75.00	10.9	Upper Marker

Region table for sample 4 : 1062E24 Soni 4+3+3Cycles 1:6

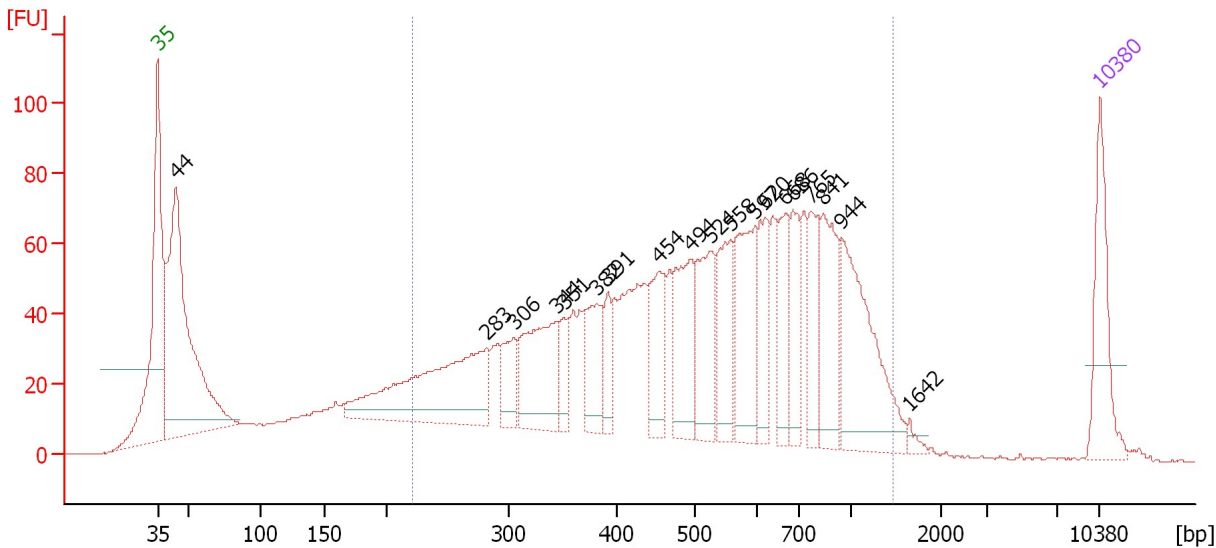
From [bp]	To [bp]	Average Size [bp]	Molarity [pmol/l]	Conc. [pg/ μ l]	Corr. Area	% of Total	Size distribution in CV [%]	Color
231	1,503	561	9,767.9	2,815.91	2,144.5	80	45.1	

Assay Class: High Sensitivity DNA Assay
 Data Path: C:\...ents and Settings\Bioanalyzer\2012-07-26\2012-07-26_003.xad

Created: 7/26/2012 12:59:32 PM
 Modified: 7/26/2012 1:39:13 PM

Electropherogram Summary Continued ...

156P14 Soni 4+3+2Cycles 1:6



Overall Results for sample 5 : 156P14 Soni 4+3+2Cycles 1:6

Number of peaks found: 19 Corr. Area 1: 2,068.3
 Noise: 0.1

Peak table for sample 5 : 156P14 Soni 4+3+2Cycles 1:6

Peak	Size [bp]	Conc. [pg/μl]	Molarity [pmol/l]	Observations
1	35	125.00	5,411.3	Lower Marker
2	44	489.34	16,890.5	
3	283	261.08	1,395.7	
4	306	54.30	268.5	
5	344	136.97	602.4	
6	351	34.46	148.6	
7	382	75.18	298.2	
8	391	37.79	146.2	
9	454	81.11	270.8	
10	494	102.02	312.7	
11	524	104.02	300.5	
12	558	87.97	238.7	
13	597	110.34	280.2	
14	620	71.17	174.0	
15	668	62.17	141.1	
16	686	63.04	139.3	
17	765	64.83	128.4	
18	841	101.43	182.8	
19	944	162.36	260.5	
20	1,642	7.00	6.5	
21	10,380	75.00	10.9	Upper Marker

Region table for sample 5 : 156P14 Soni 4+3+2Cycles 1:6

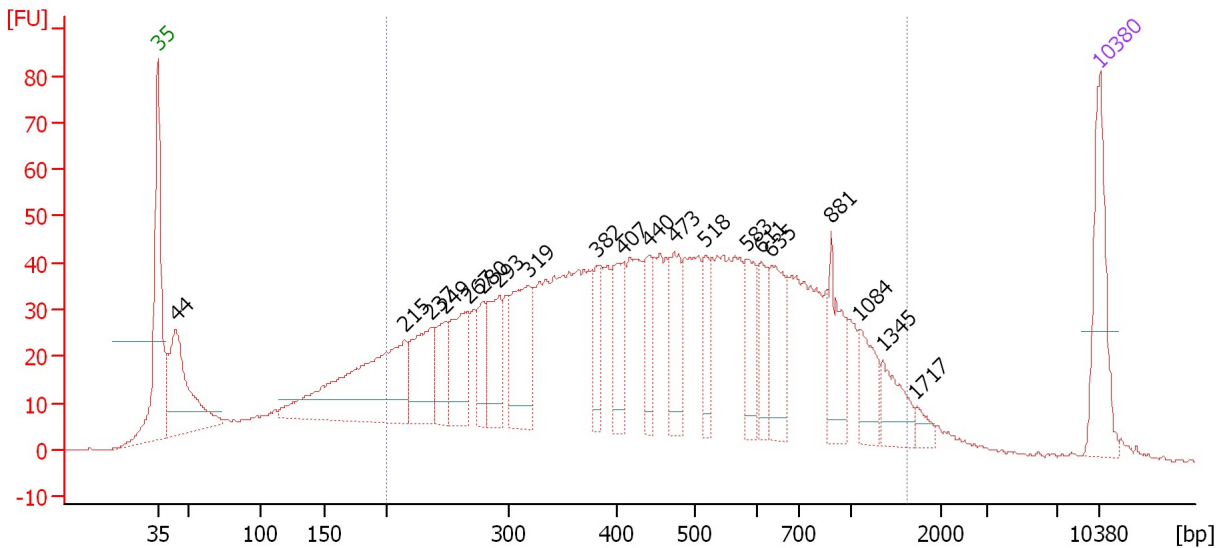
From [bp]	To [bp]	Average Size [bp]	Molarity [pmol/l]	Conc. [pg/μl]	Corr. Area	% of Total	Size distribution in CV [%]	Color
221	1,456	563	7,915.2	2,269.68	2,068.3	74	44.7	Blue

Assay Class: High Sensitivity DNA Assay
 Data Path: C:\...ents and Settings\Bioanalyzer\2012-07-26\2012-07-26_003.xad

Created: 7/26/2012 12:59:32 PM
 Modified: 7/26/2012 1:39:13 PM

Electropherogram Summary Continued ...

502I15 Soni 4+3+4Cycles 1:6



Overall Results for sample 6 : 502I15 Soni 4+3+4Cycles 1:6

Number of peaks found: 20 Corr. Area 1: 1,709.2
 Noise: 0.1

Peak table for sample 6 : 502I15 Soni 4+3+4Cycles 1:6

Peak	Size [bp]	Conc. [pg/µl]	Molarity [pmol/l]	Observations
1	35	125.00	5,411.3	Lower Marker
2	44	186.46	6,419.4	
3	215	253.10	1,779.7	
4	237	98.16	627.7	
5	249	52.30	318.8	
6	267	84.37	478.5	
7	280	42.41	229.6	
8	293	72.62	376.0	
9	319	114.85	545.7	
10	382	45.00	178.5	
11	407	64.51	240.0	
12	440	45.09	155.2	
13	473	61.71	197.7	
14	518	42.53	124.5	
15	583	52.98	137.8	
16	611	39.73	98.4	
17	635	71.87	171.5	
18	881	60.51	104.0	
19	1,084	41.11	57.5	
20	1,345	39.53	44.5	
21	1,717	11.15	9.8	
22	10,380	75.00	10.9	Upper Marker

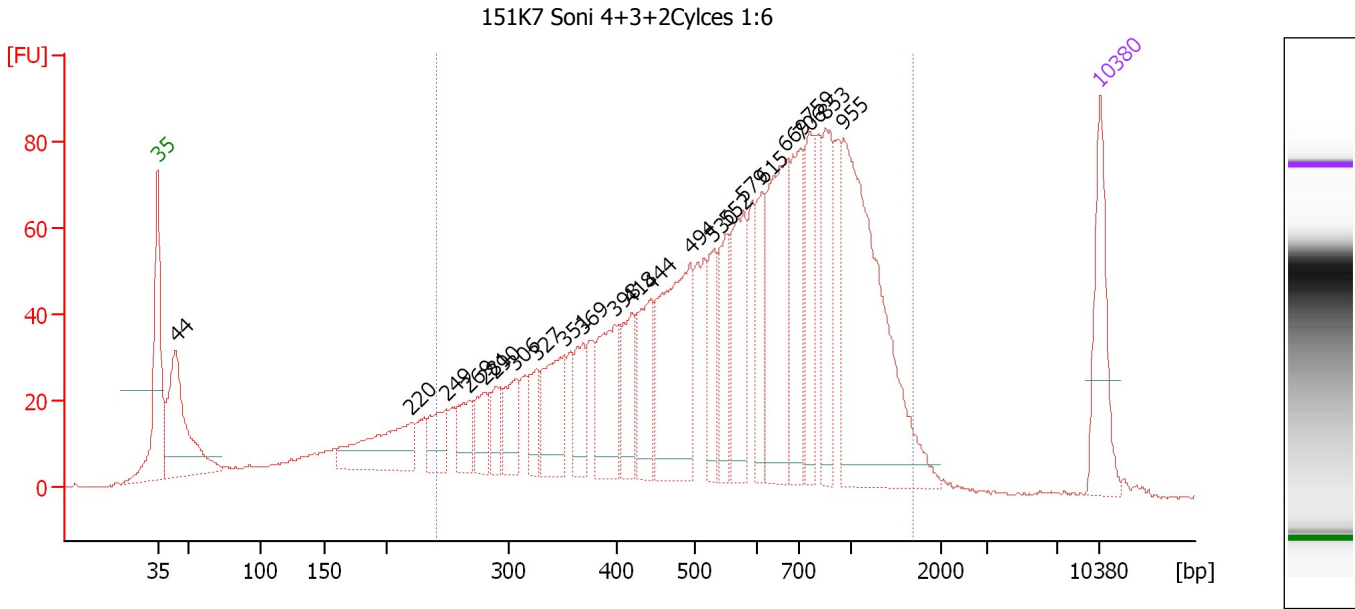
Region table for sample 6 : 502I15 Soni 4+3+4Cycles 1:6

From [bp]	To [bp]	Average Size [bp]	Molarity [pmol/l]	Conc. [pg/µl]	Corr. Area	% of Total	Size distribution in CV [%]	Color
200	1,610	515	9,645.3	2,447.37	1,709.2	79	52.2	Blue

Assay Class: High Sensitivity DNA Assay
 Data Path: C:\...ents and Settings\Bioanalyzer\2012-07-26\2012-07-26_003.xad

Created: 7/26/2012 12:59:32 PM
 Modified: 7/26/2012 1:39:13 PM

Electropherogram Summary Continued ...



Overall Results for sample 7 : 151K7 Soni 4+3+2Cycles 1:6

Number of peaks found: 23 Corr. Area 1: 1,969.3
 Noise: 0.1

Peak table for sample 7 : 151K7 Soni 4+3+2Cycles 1:6

Peak	Size [bp]	Conc. [pg/µl]	Molarity [pmol/l]	Observations
1	35	125.00	5,411.3	Lower Marker
2	44	199.35	6,899.9	
3	220	114.62	787.8	
4	249	49.67	301.9	
5	269	39.90	225.0	
6	281	41.18	222.0	
7	290	33.06	172.8	
8	306	51.78	256.1	
9	327	36.74	170.5	
10	351	85.88	370.4	
11	369	50.00	205.4	
12	398	96.92	369.4	
13	418	68.99	250.2	
14	444	80.16	273.8	
15	494	197.23	605.5	
16	530	56.73	162.1	
17	552	57.62	158.1	
18	579	103.42	270.7	
19	615	59.90	147.7	
20	669	169.92	385.1	
21	706	106.55	228.8	
22	759	76.01	151.7	
23	853	88.31	156.8	
24	955	317.82	504.0	
25	10,380	75.00	10.9	Upper Marker

Assay Class: High Sensitivity DNA Assay
Data Path: C:\...ents and Settings\Bioanalyzer\2012-07-26\2012-07-26_003.xad

Created: 7/26/2012 12:59:32 PM
Modified: 7/26/2012 1:39:13 PM

Electropherogram Summary Continued ...

... Region table for sample 7 : 151K7 Soni 4+3+2Cycles 1:6

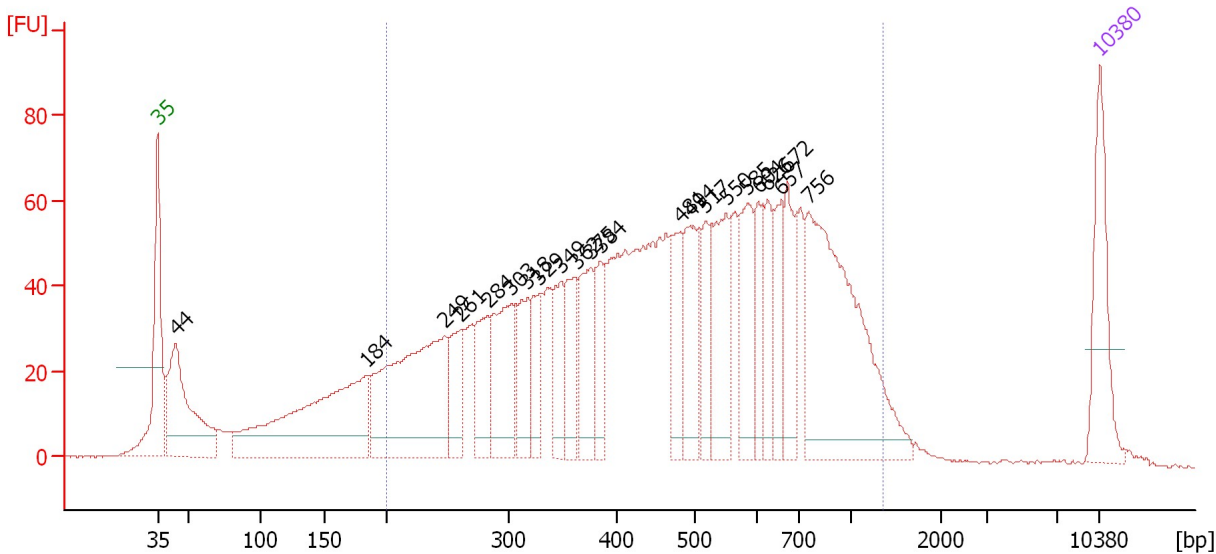
From [bp]	To [bp]	Average Size [bp]	Molarity [pmol/l]	Conc. [pg/μl]	Corr. Area	% of Total	Size distribution in CV [%]	Color
242	1,684	648	7,377.4	2,397.12	1,969.3	82	46.6	■

Assay Class: High Sensitivity DNA Assay
 Data Path: C:\...ents and Settings\Bioanalyzer\2012-07-26\2012-07-26_003.xad

Created: 7/26/2012 12:59:32 PM
 Modified: 7/26/2012 1:39:13 PM

Electropherogram Summary Continued ...

132B20-1 Soni 4+3+2Cycles 1:6



Overall Results for sample 8 : 132B20-1 Soni 4+3+2Cycles 1:6

Number of peaks found: 22 Corr. Area 1: 2,021.8
 Noise: 0.1

Peak table for sample 8 : 132B20-1 Soni 4+3+2Cycles 1:6

Peak	Size [bp]	Conc. [pg/μl]	Molarity [pmol/l]	Observations
1	35	125.00	5,411.3	Lower Marker
2	44	201.45	6,963.1	
3	184	302.05	2,481.9	
4	249	294.81	1,797.4	
5	261	61.86	359.2	
6	284	74.97	399.9	
7	303	115.19	575.4	
8	318	64.11	305.7	
9	329	53.89	248.2	
10	349	61.99	269.5	
11	362	65.85	275.4	
12	375	81.30	328.1	
13	384	52.86	208.6	
14	481	59.81	188.6	
15	494	96.77	297.0	
16	517	55.67	163.3	
17	550	100.34	276.2	
18	585	80.91	209.4	
19	604	49.64	124.5	
20	626	49.80	120.5	
21	657	49.98	115.3	
22	672	69.80	157.4	
23	756	307.64	616.8	
24	10,380	75.00	10.9	Upper Marker

Assay Class: High Sensitivity DNA Assay
Data Path: C:\...ents and Settings\Bioanalyzer\2012-07-26\2012-07-26_003.xad

Created: 7/26/2012 12:59:32 PM
Modified: 7/26/2012 1:39:13 PM

Electropherogram Summary Continued ...

... Region table for sample 8 : 132B20-1 Soni 4+3+2Cycles 1:6

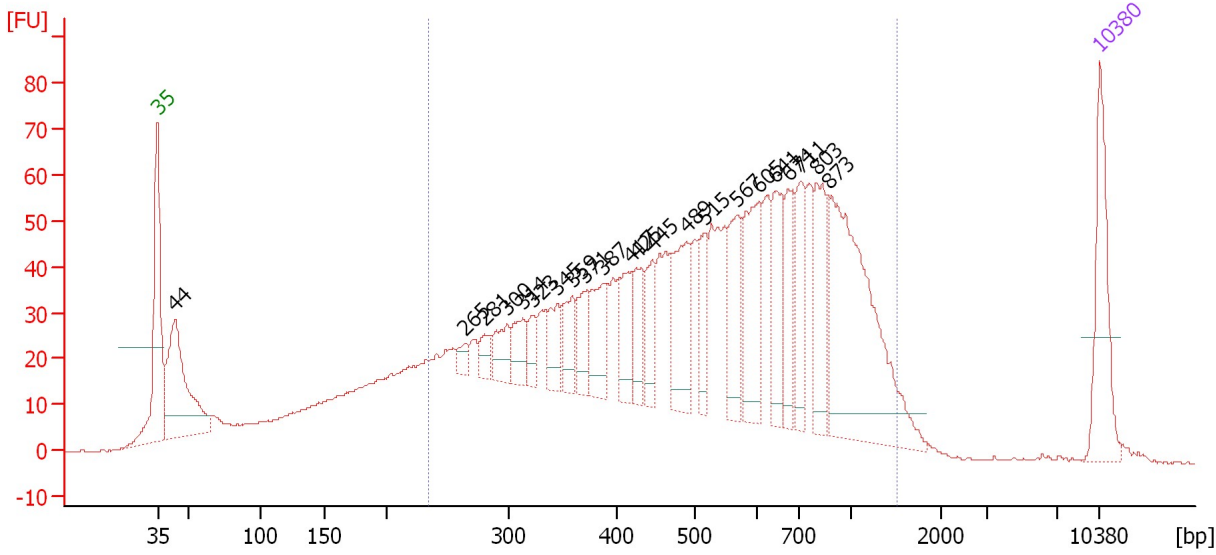
From [bp]	To [bp]	Average Size [bp]	Molarity [pmol/l]	Conc. [pg/μl]	Corr. Area	% of Total	Size distribution in CV [%]	Color
200	1,359	517	9,100.8	2,402.22	2,021.8	82	44.3	■

Assay Class: High Sensitivity DNA Assay
 Data Path: C:\...ents and Settings\Bioanalyzer\2012-07-26\2012-07-26_003.xad

Created: 7/26/2012 12:59:32 PM
 Modified: 7/26/2012 1:39:13 PM

Electropherogram Summary Continued ...

707G02-1 Soni 4+3+2Cycles 1:6



Overall Results for sample 9 : 707G02-1 Soni 4+3+2Cycles 1:6

Number of peaks found: 22 Corr. Area 1: 1,697.0
 Noise: 0.1

Peak table for sample 9 : 707G02-1 Soni 4+3+2Cycles 1:6

Peak	Size [bp]	Conc. [pg/μl]	Molarity [pmol/l]	Observations
1	35	125.00	5,411.3	Lower Marker
2	44	197.94	6,885.0	
3	265	14.05	80.3	
4	281	17.50	94.3	
5	300	35.54	179.7	
6	314	35.04	169.3	
7	323	22.46	105.4	
8	345	35.13	154.1	
9	359	40.03	169.1	
10	371	36.30	148.4	
11	387	64.18	251.2	
12	417	50.36	182.8	
13	425	41.63	148.4	
14	445	43.11	146.9	
15	489	86.46	268.0	
16	515	44.26	130.1	
17	567	67.15	179.4	
18	605	93.75	234.7	
19	641	67.03	158.4	
20	674	52.19	117.4	
21	711	62.15	132.4	
22	803	74.90	141.4	
23	873	257.93	447.4	
24	10,380	75.00	10.9	Upper Marker

Assay Class: High Sensitivity DNA Assay
Data Path: C:\...ents and Settings\Bioanalyzer\2012-07-26\2012-07-26_003.xad

Created: 7/26/2012 12:59:32 PM
Modified: 7/26/2012 1:39:13 PM

Electropherogram Summary Continued ...

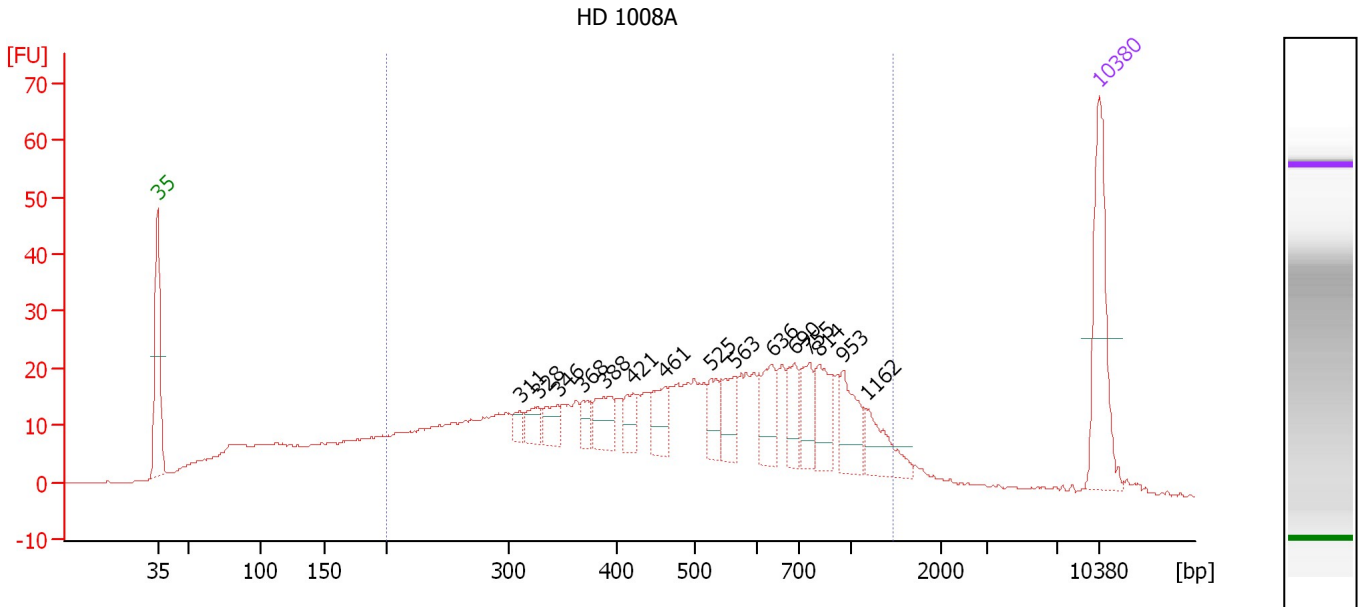
... Region table for sample 9 : 707G02-1 Soni 4+3+2Cycles 1:6

From [bp]	To [bp]	Average Size [bp]	Molarity [pmol/l]	Conc. [pg/μl]	Corr. Area	% of Total	Size distribution in CV [%]	Color
234	1,516	577	8,015.2	2,360.37	1,697.0	78	45.6	■

Assay Class: High Sensitivity DNA Assay
 Data Path: C:\...ents and Settings\Bioanalyzer\2012-07-26\2012-07-26_003.xad

Created: 7/26/2012 12:59:32 PM
 Modified: 7/26/2012 1:39:13 PM

Electropherogram Summary Continued ...



Overall Results for sample 10 : HD 1008A

Number of peaks found: 15 Corr. Area 1: 735.1
 Noise: 0.1

Peak table for sample 10 : HD 1008A

Peak	Size [bp]	Conc. [pg/μl]	Molarity [pmol/l]	Observations
1	35	125.00	5,411.3	Lower Marker
2	311	10.68	52.0	
3	328	17.40	80.4	
4	346	19.91	87.3	
5	368	12.96	53.3	
6	388	32.64	127.5	
7	421	21.08	75.9	
8	461	29.87	98.1	
9	525	25.32	73.0	
10	563	30.56	82.2	
11	636	35.21	83.8	
12	690	26.14	57.4	
13	755	28.71	57.6	
14	814	39.30	73.1	
15	953	37.39	59.5	
16	1,162	32.25	42.1	
17	10,380	75.00	10.9	Upper Marker

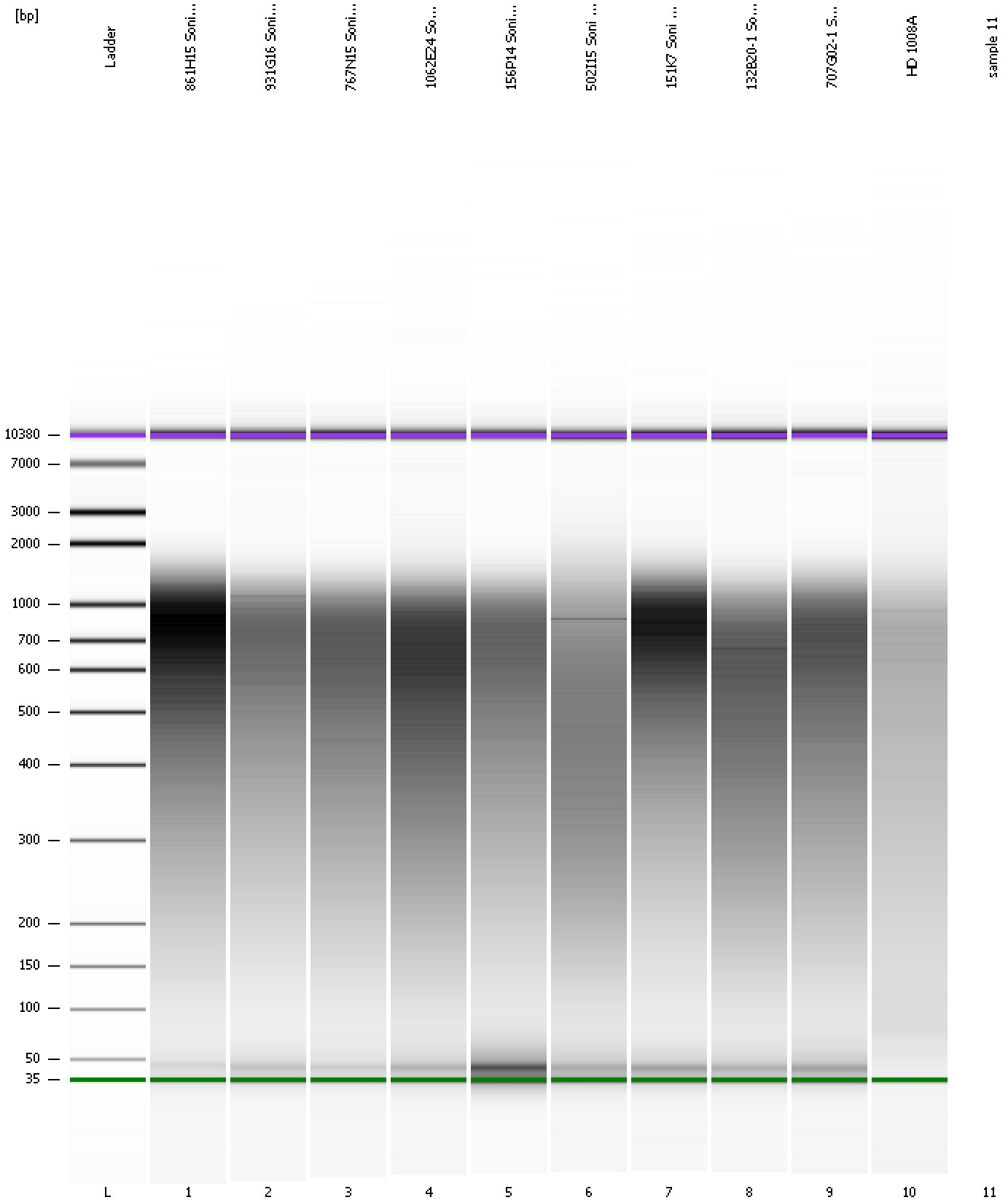
Region table for sample 10 : HD 1008A

From [bp]	To [bp]	Average Size [bp]	Molarity [pmol/l]	Conc. [pg/μl]	Corr. Area	% of Total	Size distribution in CV [%]	Color
200	1,461	539	4,608.4	1,221.38	735.1	76	48.3	Blue

Assay Class: High Sensitivity DNA Assay
Data Path: C:\...ents and Settings\Bioanalyzer\2012-07-26\2012-07-26_003.xad

Created: 7/26/2012 12:59:32 PM
Modified: 7/26/2012 1:39:13 PM

Gel Image



Assay Class: High Sensitivity DNA Assay
Data Path: C:\...ents and Settings\Bioanalyzer\2012-07-26\2012-07-26_003.xad

Created: 7/26/2012 12:59:32 PM
Modified: 7/26/2012 1:39:13 PM

Invalid Samples

Sample 11 has not been run, no results available.