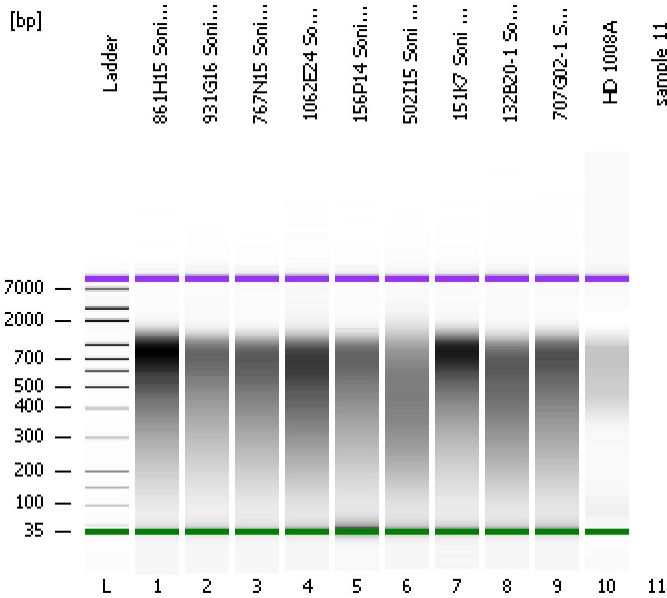


Assay Class: High Sensitivity DNA Assay
Data Path: C:\...ents and Settings\Bioanalyzer\2012-07-26\2012-07-26_003.xad

Created: 7/26/2012 12:59:32 PM
Modified: 7/26/2012 3:11:16 PM

Electrophoresis File Run Summary



Instrument Information:

Instrument Name: DE13701086 Firmware: C.01.069
Serial#: DE13701086 Type: G2938B

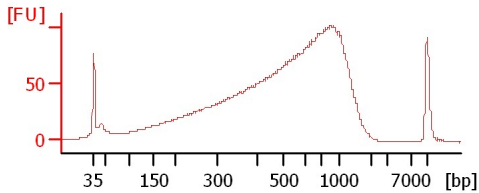
Assay Information:

Assay Origin Path: C:\Program Files\Agilent\2100 bioanalyzer\2100 expert\assays\dsDNA\High Sensitivity DNA.xsy
Assay Class: High Sensitivity DNA Assay
Version: 1.03
Assay Comments: Copyright © 2003-2010 Agilent Technologies

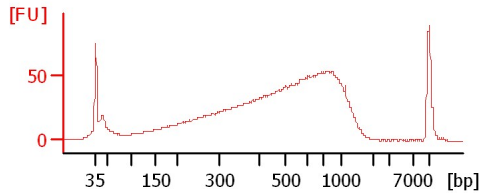
Chip Information:

Chip Lot #:
Reagent Kit Lot #:
Chip Comments:

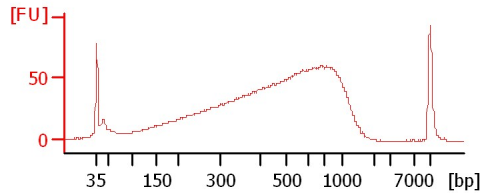
861H15 Soni 4+3+2Cycles 1:6



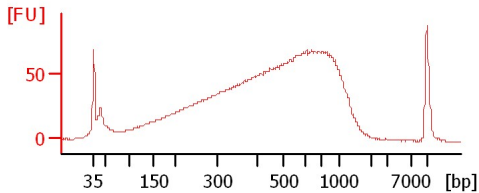
931G16 Soni 4+3+2Cycles 1:6



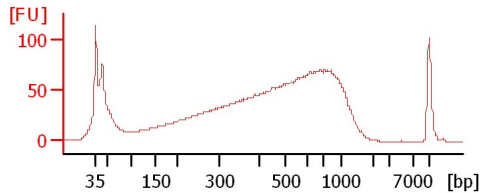
767N15 Soni 4+3+3Cycles 1:6



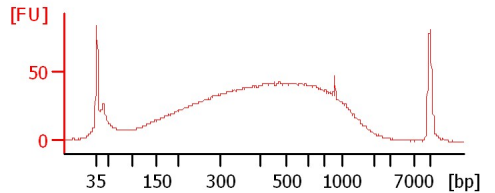
1062E24 Soni 4+3+3Cycles 1:6



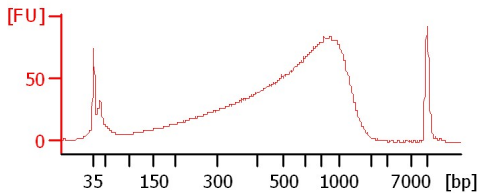
156P14 Soni 4+3+2Cycles 1:6



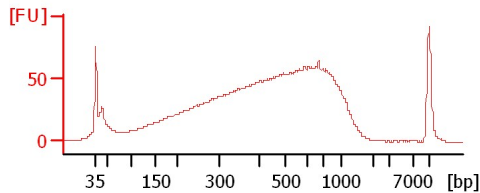
502I15 Soni 4+3+4Cycles 1:6



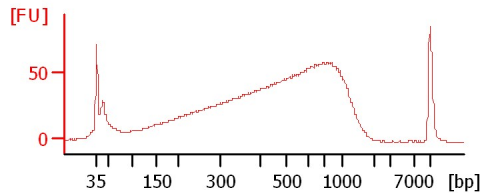
151K7 Soni 4+3+2Cycles 1:6



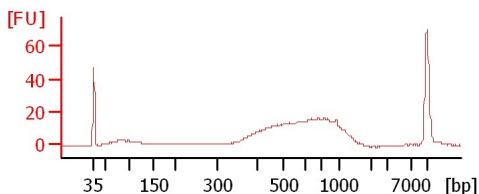
132B20-1 Soni 4+3+2Cycles 1:6



707G02-1 Soni 4+3+2Cycles 1:6



HD 1008A



Assay Class: High Sensitivity DNA Assay
 Data Path: C:\...ents and Settings\Bioanalyzer\2012-07-26\2012-07-26_003.xad

Created: 7/26/2012 12:59:32 PM
 Modified: 7/26/2012 3:11:16 PM

Electrophoresis File Run Summary (Chip Summary)

| Sample Name | Sample Comment | Rest. Digest | Status | Observation | Result Label | Result Color |
|-------------------------------|----------------|--------------------------|--------|-------------|--------------|--------------|
| 861H15 Soni 4+3+2Cycles 1:6 | | <input type="checkbox"/> | ✓ | | | |
| 931G16 Soni 4+3+2Cycles 1:6 | | <input type="checkbox"/> | ✓ | | | |
| 767N15 Soni 4+3+3Cycles 1:6 | | <input type="checkbox"/> | ✓ | | | |
| 1062E24 Soni 4+3+3Cycles 1:6 | | <input type="checkbox"/> | ✓ | | | |
| 156P14 Soni 4+3+2Cycles 1:6 | | <input type="checkbox"/> | ✓ | | | |
| 502I15 Soni 4+3+4Cycles 1:6 | | <input type="checkbox"/> | ✓ | | | |
| 151K7 Soni 4+3+2Cycles 1:6 | | <input type="checkbox"/> | ✓ | | | |
| 132B20-1 Soni 4+3+2Cycles 1:6 | | <input type="checkbox"/> | ✓ | | | |
| 707G02-1 Soni 4+3+2Cycles 1:6 | | <input type="checkbox"/> | ✓ | | | |
| HD 1008A | | <input type="checkbox"/> | ✓ | | | |
| sample 11 | | <input type="checkbox"/> | | | | |
| Ladder | | <input type="checkbox"/> | ✓ | | | |

Chip Lot #

Reagent Kit Lot #

Chip Comments :

Assay Class: High Sensitivity DNA Assay
Data Path: C:\...ents and Settings\Bioanalyzer\2012-07-26\2012-07-26_003.xad

Created: 7/26/2012 12:59:32 PM
Modified: 7/26/2012 3:11:16 PM

Electrophoresis Assay Details

General Analysis Settings

Number of Available Sample and Ladder Wells (Max.) : 12
Minimum Visible Range [s] : 32
Maximum Visible Range [s] : 138
Start Analysis Time Range [s] : 33
End Analysis Time Range [s] : 137.5
Ladder Concentration [pg/μl] : 1950
Uses Standard Area for Ladder Fragments
Lower Marker Concentration [pg/μl] : 125
Upper Marker Concentration [pg/μl] : 75
Used Upper Marker for Quantitation
Standard Curve Fit is Point to Point
Show Data Aligned to Lower and Upper Marker

Integrator Settings

Integration Start Time [s] : 33.05
Integration End Time [s] : 137
Slope Threshold : 0.8
Height Threshold [FU] : 5
Area Threshold : 0.1
Width Threshold [s] : 0.6
Baseline Plateau [s] : 0.5

Filter Settings

Filter Width [s] : 0.5
Polynomial Order : 4

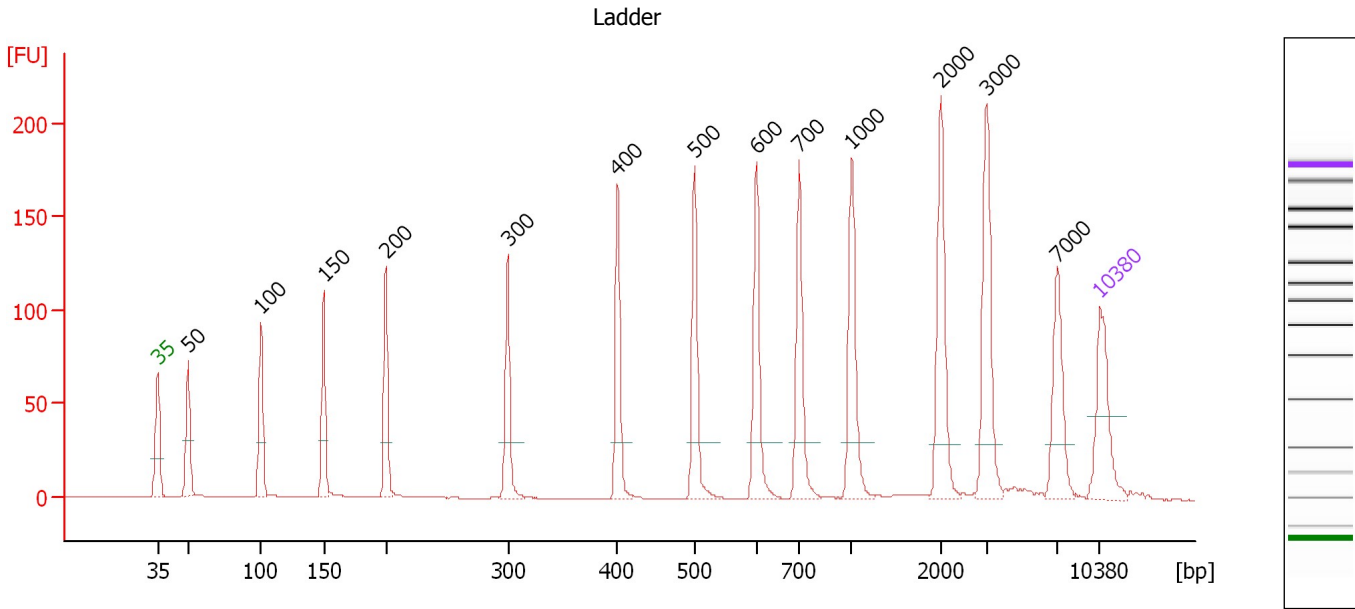
Ladder

| Ladder Peak | Size | Area |
|-------------|-------|------|
| 1 | 35 | 160 |
| 2 | 50 | 210 |
| 3 | 100 | 208 |
| 4 | 150 | 221 |
| 5 | 200 | 242 |
| 6 | 300 | 270 |
| 7 | 400 | 305 |
| 8 | 500 | 306 |
| 9 | 600 | 336 |
| 10 | 700 | 321 |
| 11 | 1000 | 366 |
| 12 | 2000 | 413 |
| 13 | 3000 | 411 |
| 14 | 7000 | 400 |
| 15 | 10380 | 214 |

Assay Class: High Sensitivity DNA Assay
 Data Path: C:\...ents and Settings\Bioanalyzer\2012-07-26\2012-07-26_003.xad

Created: 7/26/2012 12:59:32 PM
 Modified: 7/26/2012 3:11:16 PM

Electropherogram Summary



Overall Results for Ladder

Noise: 0.1

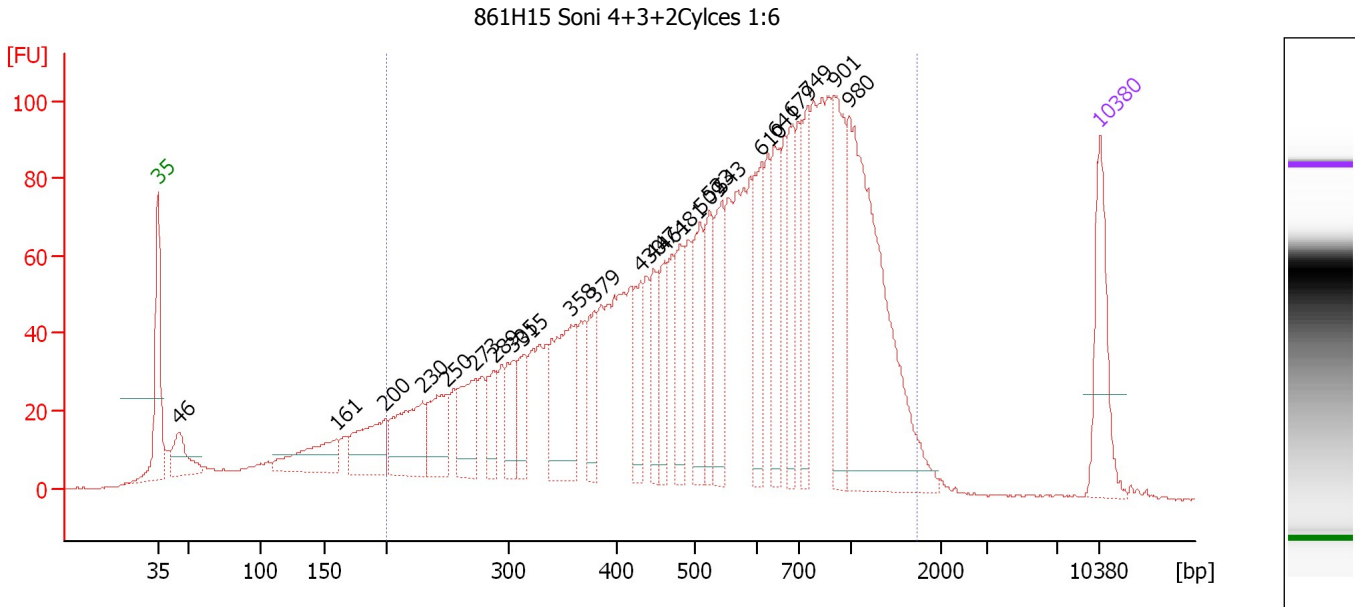
Peak table for Ladder

| Peak | Size [bp] | Conc. [pg/μl] | Molarity [pmol/l] | Observations |
|------|-----------|---------------|-------------------|--------------|
| 1 | 35 | 125.00 | 5,411.3 | Lower Marker |
| 2 | 50 | 150.00 | 4,545.5 | Ladder Peak |
| 3 | 100 | 150.00 | 2,272.7 | Ladder Peak |
| 4 | 150 | 150.00 | 1,515.2 | Ladder Peak |
| 5 | 200 | 150.00 | 1,136.4 | Ladder Peak |
| 6 | 300 | 150.00 | 757.6 | Ladder Peak |
| 7 | 400 | 150.00 | 568.2 | Ladder Peak |
| 8 | 500 | 150.00 | 454.5 | Ladder Peak |
| 9 | 600 | 150.00 | 378.8 | Ladder Peak |
| 10 | 700 | 150.00 | 324.7 | Ladder Peak |
| 11 | 1,000 | 150.00 | 227.3 | Ladder Peak |
| 12 | 2,000 | 150.00 | 113.6 | Ladder Peak |
| 13 | 3,000 | 150.00 | 75.8 | Ladder Peak |
| 14 | 7,000 | 150.00 | 32.5 | Ladder Peak |
| 15 | 10,380 | 75.00 | 10.9 | Upper Marker |

Assay Class: High Sensitivity DNA Assay
 Data Path: C:\...ents and Settings\Bioanalyzer\2012-07-26\2012-07-26_003.xad

Created: 7/26/2012 12:59:32 PM
 Modified: 7/26/2012 3:11:16 PM

Electropherogram Summary Continued ...



Overall Results for sample 1 : 861H15 Soni 4+3+2Cycles 1:6

Number of peaks found: 24 Corr. Area 1: 2,713.8
 Noise: 0.2

Peak table for sample 1 : 861H15 Soni 4+3+2Cycles 1:6

| Peak | Size [bp] | Conc. [pg/μl] | Molarity [pmol/l] | Observations |
|------|-----------|---------------|-------------------|--------------|
| 1 | 35 | 125.00 | 5,411.3 | Lower Marker |
| 2 | 46 | 58.71 | 1,953.9 | |
| 3 | 161 | 83.59 | 788.5 | |
| 4 | 200 | 88.49 | 671.8 | |
| 5 | 230 | 109.04 | 717.9 | |
| 6 | 250 | 76.40 | 462.4 | |
| 7 | 273 | 75.72 | 419.9 | |
| 8 | 289 | 47.23 | 247.8 | |
| 9 | 305 | 53.35 | 265.2 | |
| 10 | 315 | 49.21 | 237.0 | |
| 11 | 358 | 137.59 | 581.9 | |
| 12 | 379 | 57.13 | 228.5 | |
| 13 | 430 | 52.37 | 184.3 | |
| 14 | 447 | 51.24 | 173.8 | |
| 15 | 461 | 56.31 | 185.2 | |
| 16 | 481 | 60.12 | 189.4 | |
| 17 | 509 | 85.05 | 253.2 | |
| 18 | 523 | 69.36 | 200.9 | |
| 19 | 543 | 83.68 | 233.7 | |
| 20 | 610 | 73.36 | 182.2 | |
| 21 | 641 | 78.25 | 184.9 | |
| 22 | 679 | 72.67 | 162.3 | |
| 23 | 749 | 73.66 | 149.0 | |
| 24 | 901 | 110.94 | 186.6 | |
| 25 | 980 | 341.11 | 527.3 | |
| 26 | 10,380 | 75.00 | 10.9 | Upper Marker |

Assay Class: High Sensitivity DNA Assay
Data Path: C:\...ents and Settings\Bioanalyzer\2012-07-26\2012-07-26_003.xad

Created: 7/26/2012 12:59:32 PM
Modified: 7/26/2012 3:11:16 PM

Electropherogram Summary Continued ...

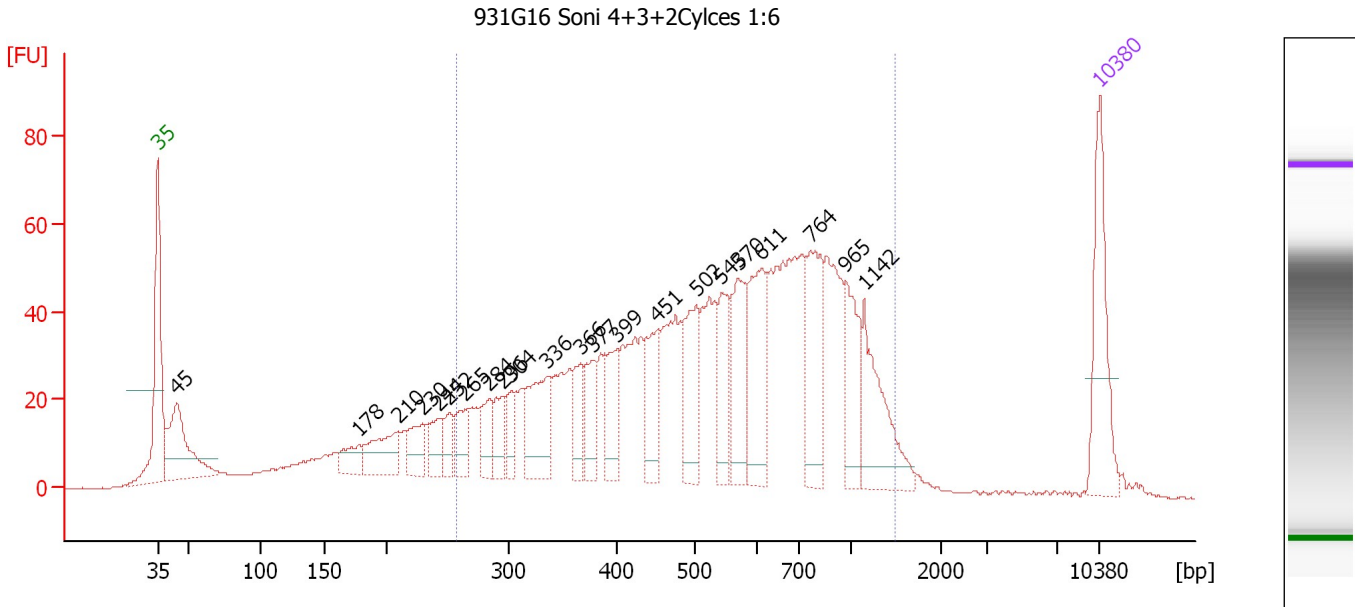
... Region table for sample 1 : **861H15 Soni 4+3+2Cycles 1:6**

| From [bp] | To [bp] | Average Size [bp] | Molarity [pmol/l] | Conc. [pg/μl] | Corr. Area | % of Total | Size distribution in CV [%] | Color |
|-----------|---------|-------------------|-------------------|---------------|------------|------------|-----------------------------|-------|
| 200 | 1,732 | 628 | 10,662.0 | 3,196.25 | 2,713.8 | 89 | 49.6 | ■ |

Assay Class: High Sensitivity DNA Assay
 Data Path: C:\...ents and Settings\Bioanalyzer\2012-07-26\2012-07-26_003.xad

Created: 7/26/2012 12:59:32 PM
 Modified: 7/26/2012 3:11:16 PM

Electropherogram Summary Continued ...



Overall Results for sample 2 : 931G16 Soni 4+3+2Cycles 1:6

Number of peaks found: 22 Corr. Area 1: 1,456.7
 Noise: 0.1

Peak table for sample 2 : 931G16 Soni 4+3+2Cycles 1:6

| Peak | Size [bp] | Conc. [pg/μl] | Molarity [pmol/l] | Observations |
|------|-----------|---------------|-------------------|--------------|
| 1 | 35 | 125.00 | 5,411.3 | Lower Marker |
| 2 | 45 | 126.84 | 4,313.1 | |
| 3 | 178 | 29.02 | 246.6 | |
| 4 | 210 | 56.53 | 408.3 | |
| 5 | 230 | 37.00 | 243.7 | |
| 6 | 244 | 30.56 | 189.8 | |
| 7 | 252 | 23.46 | 141.1 | |
| 8 | 265 | 34.26 | 195.7 | |
| 9 | 284 | 35.45 | 188.8 | |
| 10 | 296 | 31.39 | 160.8 | |
| 11 | 304 | 28.99 | 144.7 | |
| 12 | 336 | 82.72 | 373.0 | |
| 13 | 366 | 37.85 | 156.6 | |
| 14 | 377 | 40.38 | 162.1 | |
| 15 | 399 | 44.34 | 168.2 | |
| 16 | 451 | 59.20 | 198.9 | |
| 17 | 502 | 68.71 | 207.5 | |
| 18 | 543 | 53.23 | 148.6 | |
| 19 | 570 | 69.32 | 184.2 | |
| 20 | 611 | 94.12 | 233.2 | |
| 21 | 764 | 87.85 | 174.3 | |
| 22 | 965 | 59.00 | 92.7 | |
| 23 | 1,142 | 84.32 | 111.9 | |
| 24 | 10,380 | 75.00 | 10.9 | Upper Marker |

Assay Class: High Sensitivity DNA Assay
Data Path: C:\...ents and Settings\Bioanalyzer\2012-07-26\2012-07-26_003.xad

Created: 7/26/2012 12:59:32 PM
Modified: 7/26/2012 3:11:16 PM

Electropherogram Summary Continued ...

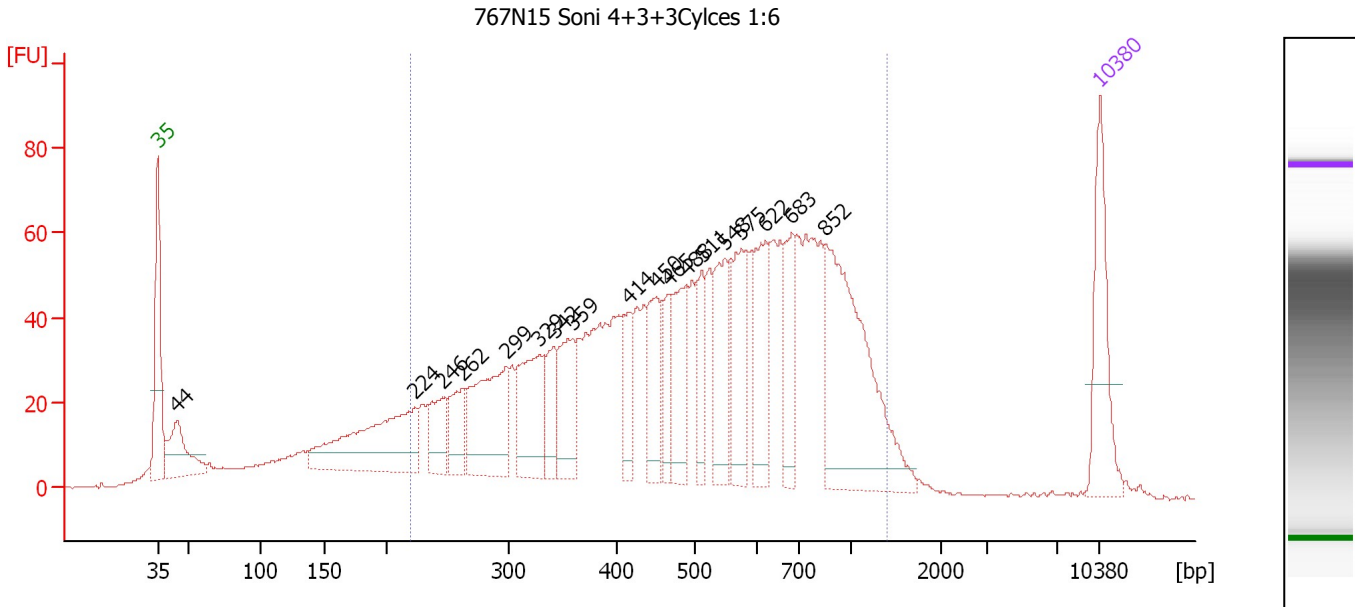
... Region table for sample 2 : 931G16 Soni 4+3+2Cycles 1:6

| From [bp] | To [bp] | Average Size [bp] | Molarity [pmol/l] | Conc. [pg/μl] | Corr. Area | % of Total | Size distribution in CV [%] | Color |
|-----------|---------|-------------------|-------------------|---------------|------------|------------|-----------------------------|-------|
| 257 | 1,475 | 595 | 5,682.7 | 1,774.92 | 1,456.7 | 78 | 42.9 | ■ |

Assay Class: High Sensitivity DNA Assay
 Data Path: C:\...ents and Settings\Bioanalyzer\2012-07-26\2012-07-26_003.xad

Created: 7/26/2012 12:59:32 PM
 Modified: 7/26/2012 3:11:16 PM

Electropherogram Summary Continued ...



Overall Results for sample 3 : 767N15 Soni 4+3+3Cycles 1:6

Number of peaks found: 18 Corr. Area 1: 1,828.2
 Noise: 0.2

Peak table for sample 3 : 767N15 Soni 4+3+3Cycles 1:6

| Peak | Size [bp] | Conc. [pg/μl] | Molarity [pmol/l] | Observations |
|------|-----------|---------------|-------------------|--------------|
| 1 | 35 | 125.00 | 5,411.3 | Lower Marker |
| 2 | 44 | 84.86 | 2,891.4 | |
| 3 | 224 | 186.55 | 1,262.1 | |
| 4 | 246 | 51.08 | 314.1 | |
| 5 | 262 | 51.35 | 296.7 | |
| 6 | 299 | 139.01 | 704.7 | |
| 7 | 329 | 104.37 | 480.6 | |
| 8 | 342 | 47.10 | 208.5 | |
| 9 | 359 | 75.55 | 319.1 | |
| 10 | 414 | 44.84 | 164.2 | |
| 11 | 450 | 69.25 | 233.3 | |
| 12 | 465 | 41.38 | 134.8 | |
| 13 | 488 | 77.98 | 241.9 | |
| 14 | 511 | 44.26 | 131.1 | |
| 15 | 548 | 75.50 | 208.7 | |
| 16 | 575 | 76.10 | 200.5 | |
| 17 | 622 | 86.46 | 210.8 | |
| 18 | 683 | 64.97 | 144.2 | |
| 19 | 852 | 240.01 | 426.7 | |
| 20 | 10,380 | 75.00 | 10.9 | Upper Marker |

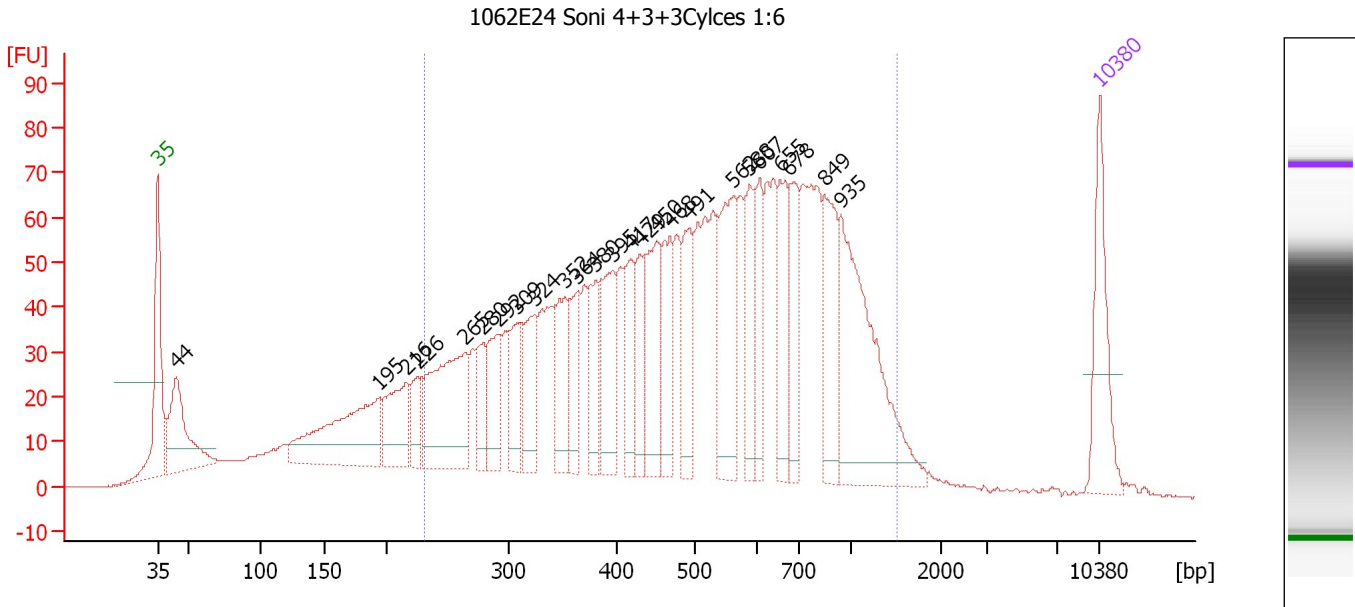
Region table for sample 3 : 767N15 Soni 4+3+3Cycles 1:6

| From [bp] | To [bp] | Average Size [bp] | Molarity [pmol/l] | Conc. [pg/μl] | Corr. Area | % of Total | Size distribution in CV [%] | Color |
|-----------|---------|-------------------|-------------------|---------------|------------|------------|-----------------------------|-------|
| 221 | 1,399 | 555 | 7,548.2 | 2,152.77 | 1,828.2 | 82 | 43.5 | Blue |

Assay Class: High Sensitivity DNA Assay
 Data Path: C:\...ents and Settings\Bioanalyzer\2012-07-26\2012-07-26_003.xad

Created: 7/26/2012 12:59:32 PM
 Modified: 7/26/2012 3:11:16 PM

Electropherogram Summary Continued ...



Overall Results for sample 4 : 1062E24 Soni 4+3+3Cycles 1:6

Number of peaks found: 25 Corr. Area 1: 2,144.5
 Noise: 0.1

Peak table for sample 4 : 1062E24 Soni 4+3+3Cycles 1:6

| Peak | Size [bp] | Conc. [pg/μl] | Molarity [pmol/l] | Observations |
|------|-----------|---------------|-------------------|--------------|
| 1 | 35 | 125.00 | 5,411.3 | Lower Marker |
| 2 | 44 | 141.92 | 4,846.7 | |
| 3 | 195 | 188.15 | 1,465.3 | |
| 4 | 216 | 91.52 | 641.2 | |
| 5 | 226 | 44.06 | 294.9 | |
| 6 | 265 | 189.20 | 1,081.7 | |
| 7 | 280 | 51.52 | 279.2 | |
| 8 | 292 | 69.84 | 361.8 | |
| 9 | 309 | 59.41 | 291.3 | |
| 10 | 324 | 74.68 | 349.3 | |
| 11 | 352 | 74.64 | 320.8 | |
| 12 | 364 | 60.17 | 250.7 | |
| 13 | 380 | 61.99 | 247.3 | |
| 14 | 395 | 90.30 | 346.1 | |
| 15 | 417 | 61.28 | 222.6 | |
| 16 | 429 | 58.40 | 206.0 | |
| 17 | 450 | 102.61 | 345.7 | |
| 18 | 468 | 73.73 | 238.6 | |
| 19 | 491 | 80.06 | 247.0 | |
| 20 | 562 | 130.85 | 352.9 | |
| 21 | 588 | 64.21 | 165.4 | |
| 22 | 607 | 59.62 | 148.8 | |
| 23 | 655 | 79.17 | 183.1 | |
| 24 | 678 | 69.92 | 156.3 | |
| 25 | 849 | 92.43 | 165.0 | |
| 26 | 935 | 222.58 | 360.8 | |

Assay Class: High Sensitivity DNA Assay
Data Path: C:\...ents and Settings\Bioanalyzer\2012-07-26\2012-07-26_003.xad

Created: 7/26/2012 12:59:32 PM
Modified: 7/26/2012 3:11:16 PM

Electropherogram Summary Continued ...**... Peak table for sample 4 : 1062E24 Soni 4+3+3Cycles 1:6**

| Peak | Size [bp] | Conc. [pg/ μ l] | Molarity [pmol/l] | Observations |
|------|-----------|---------------------|-------------------|--------------|
| 27 | 10,380 | 75.00 | 10.9 | Upper Marker |

Region table for sample 4 : 1062E24 Soni 4+3+3Cycles 1:6

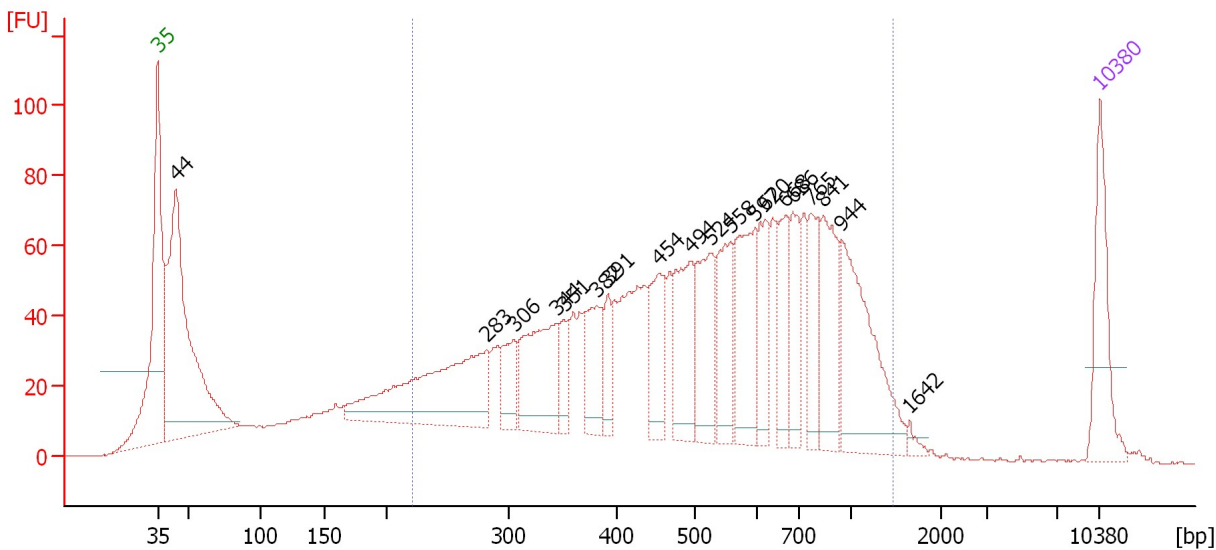
| From [bp] | To [bp] | Average Size [bp] | Molarity [pmol/l] | Conc. [pg/ μ l] | Corr. Area | % of Total | Size distribution in CV [%] | Color |
|-----------|---------|-------------------|-------------------|---------------------|------------|------------|-----------------------------|---|
| 231 | 1,503 | 561 | 9,767.9 | 2,815.91 | 2,144.5 | 80 | 45.1 |  |

Assay Class: High Sensitivity DNA Assay
 Data Path: C:\...ents and Settings\Bioanalyzer\2012-07-26\2012-07-26_003.xad

Created: 7/26/2012 12:59:32 PM
 Modified: 7/26/2012 3:11:16 PM

Electropherogram Summary Continued ...

156P14 Soni 4+3+2Cycles 1:6



Overall Results for sample 5 : 156P14 Soni 4+3+2Cycles 1:6

Number of peaks found: 19 Corr. Area 1: 2,068.3
 Noise: 0.1

Peak table for sample 5 : 156P14 Soni 4+3+2Cycles 1:6

| Peak | Size [bp] | Conc. [pg/μl] | Molarity [pmol/l] | Observations |
|------|-----------|---------------|-------------------|--------------|
| 1 | 35 | 125.00 | 5,411.3 | Lower Marker |
| 2 | 44 | 489.34 | 16,890.5 | |
| 3 | 283 | 261.08 | 1,395.7 | |
| 4 | 306 | 54.30 | 268.5 | |
| 5 | 344 | 136.97 | 602.4 | |
| 6 | 351 | 34.46 | 148.6 | |
| 7 | 382 | 75.18 | 298.2 | |
| 8 | 391 | 37.79 | 146.2 | |
| 9 | 454 | 81.11 | 270.8 | |
| 10 | 494 | 102.02 | 312.7 | |
| 11 | 524 | 104.02 | 300.5 | |
| 12 | 558 | 87.97 | 238.7 | |
| 13 | 597 | 110.34 | 280.2 | |
| 14 | 620 | 71.17 | 174.0 | |
| 15 | 668 | 62.17 | 141.1 | |
| 16 | 686 | 63.04 | 139.3 | |
| 17 | 765 | 64.83 | 128.4 | |
| 18 | 841 | 101.43 | 182.8 | |
| 19 | 944 | 162.36 | 260.5 | |
| 20 | 1,642 | 7.00 | 6.5 | |
| 21 | 10,380 | 75.00 | 10.9 | Upper Marker |

Region table for sample 5 : 156P14 Soni 4+3+2Cycles 1:6

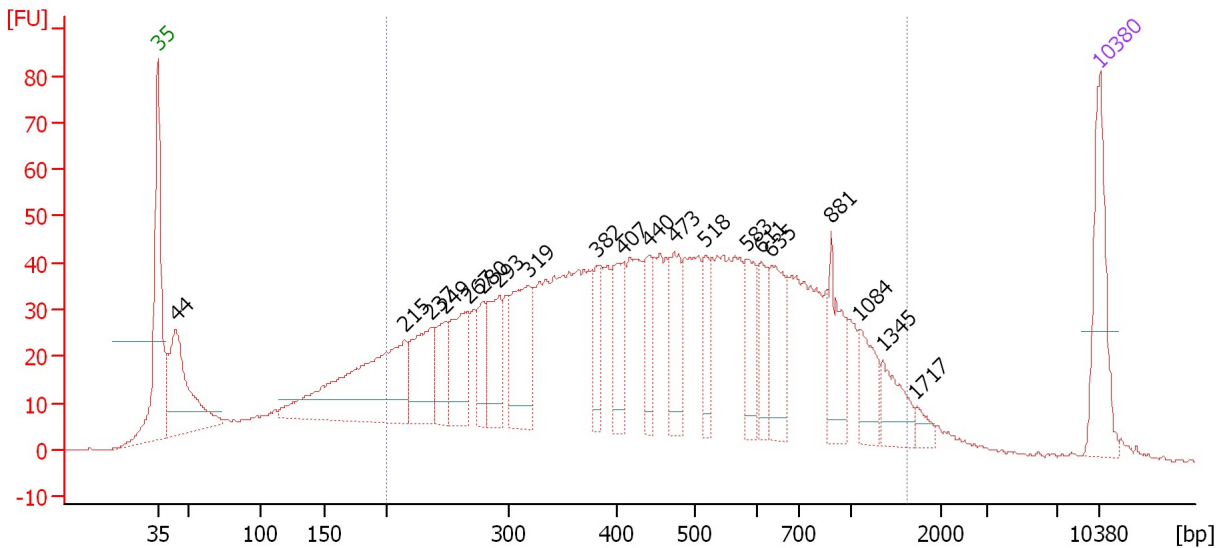
| From [bp] | To [bp] | Average Size [bp] | Molarity [pmol/l] | Conc. [pg/μl] | Corr. Area | % of Total | Size distribution in CV [%] | Color |
|-----------|---------|-------------------|-------------------|---------------|------------|------------|-----------------------------|-------|
| 221 | 1,456 | 563 | 7,915.2 | 2,269.68 | 2,068.3 | 74 | 44.7 | Blue |

Assay Class: High Sensitivity DNA Assay
 Data Path: C:\...ents and Settings\Bioanalyzer\2012-07-26\2012-07-26_003.xad

Created: 7/26/2012 12:59:32 PM
 Modified: 7/26/2012 3:11:16 PM

Electropherogram Summary Continued ...

502I15 Soni 4+3+4Cycles 1:6



Overall Results for sample 6 : 502I15 Soni 4+3+4Cycles 1:6

Number of peaks found: 20 Corr. Area 1: 1,709.2
 Noise: 0.1

Peak table for sample 6 : 502I15 Soni 4+3+4Cycles 1:6

| Peak | Size [bp] | Conc. [pg/µl] | Molarity [pmol/l] | Observations |
|------|-----------|---------------|-------------------|--------------|
| 1 | 35 | 125.00 | 5,411.3 | Lower Marker |
| 2 | 44 | 186.46 | 6,419.4 | |
| 3 | 215 | 253.10 | 1,779.7 | |
| 4 | 237 | 98.16 | 627.7 | |
| 5 | 249 | 52.30 | 318.8 | |
| 6 | 267 | 84.37 | 478.5 | |
| 7 | 280 | 42.41 | 229.6 | |
| 8 | 293 | 72.62 | 376.0 | |
| 9 | 319 | 114.85 | 545.7 | |
| 10 | 382 | 45.00 | 178.5 | |
| 11 | 407 | 64.51 | 240.0 | |
| 12 | 440 | 45.09 | 155.2 | |
| 13 | 473 | 61.71 | 197.7 | |
| 14 | 518 | 42.53 | 124.5 | |
| 15 | 583 | 52.98 | 137.8 | |
| 16 | 611 | 39.73 | 98.4 | |
| 17 | 635 | 71.87 | 171.5 | |
| 18 | 881 | 60.51 | 104.0 | |
| 19 | 1,084 | 41.11 | 57.5 | |
| 20 | 1,345 | 39.53 | 44.5 | |
| 21 | 1,717 | 11.15 | 9.8 | |
| 22 | 10,380 | 75.00 | 10.9 | Upper Marker |

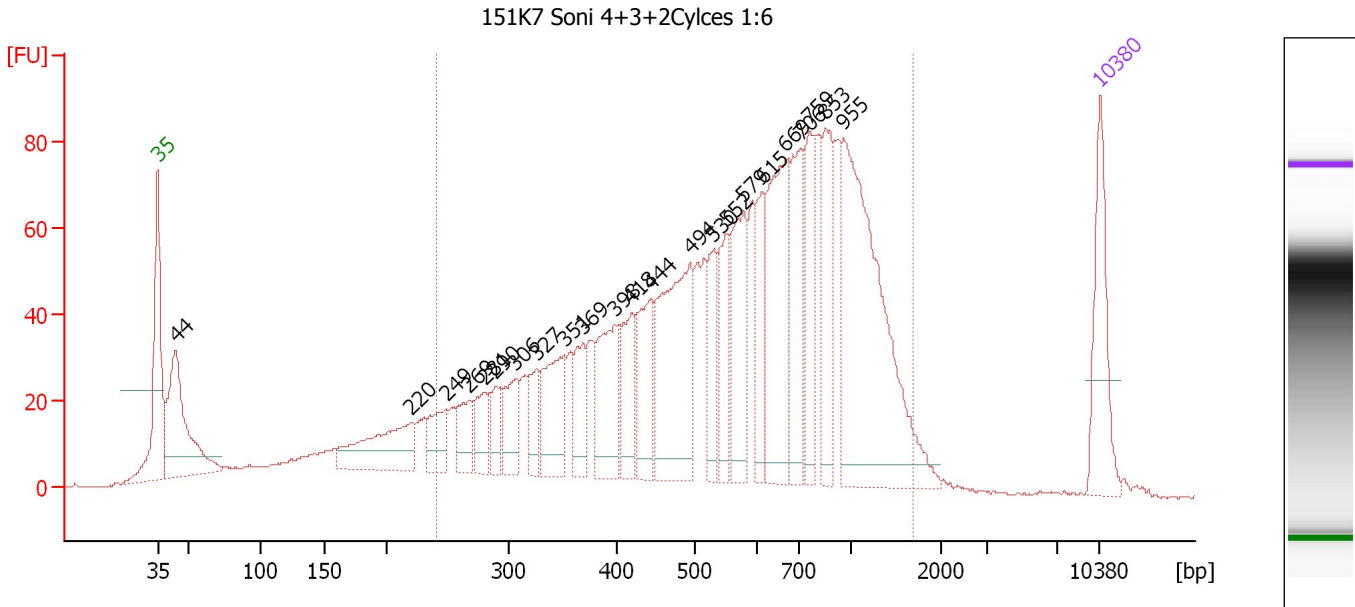
Region table for sample 6 : 502I15 Soni 4+3+4Cycles 1:6

| From [bp] | To [bp] | Average Size [bp] | Molarity [pmol/l] | Conc. [pg/µl] | Corr. Area | % of Total | Size distribution in CV [%] | Color |
|-----------|---------|-------------------|-------------------|---------------|------------|------------|-----------------------------|-------|
| 200 | 1,610 | 515 | 9,645.3 | 2,447.37 | 1,709.2 | 79 | 52.2 | Blue |

Assay Class: High Sensitivity DNA Assay
 Data Path: C:\...ents and Settings\Bioanalyzer\2012-07-26\2012-07-26_003.xad

Created: 7/26/2012 12:59:32 PM
 Modified: 7/26/2012 3:11:16 PM

Electropherogram Summary Continued ...



Overall Results for sample 7 : 151K7 Soni 4+3+2Cycles 1:6

Number of peaks found: 23 Corr. Area 1: 1,969.3
 Noise: 0.1

Peak table for sample 7 : 151K7 Soni 4+3+2Cycles 1:6

| Peak | Size [bp] | Conc. [pg/µl] | Molarity [pmol/l] | Observations |
|------|-----------|---------------|-------------------|--------------|
| 1 | 35 | 125.00 | 5,411.3 | Lower Marker |
| 2 | 44 | 199.35 | 6,899.9 | |
| 3 | 220 | 114.62 | 787.8 | |
| 4 | 249 | 49.67 | 301.9 | |
| 5 | 269 | 39.90 | 225.0 | |
| 6 | 281 | 41.18 | 222.0 | |
| 7 | 290 | 33.06 | 172.8 | |
| 8 | 306 | 51.78 | 256.1 | |
| 9 | 327 | 36.74 | 170.5 | |
| 10 | 351 | 85.88 | 370.4 | |
| 11 | 369 | 50.00 | 205.4 | |
| 12 | 398 | 96.92 | 369.4 | |
| 13 | 418 | 68.99 | 250.2 | |
| 14 | 444 | 80.16 | 273.8 | |
| 15 | 494 | 197.23 | 605.5 | |
| 16 | 530 | 56.73 | 162.1 | |
| 17 | 552 | 57.62 | 158.1 | |
| 18 | 579 | 103.42 | 270.7 | |
| 19 | 615 | 59.90 | 147.7 | |
| 20 | 669 | 169.92 | 385.1 | |
| 21 | 706 | 106.55 | 228.8 | |
| 22 | 759 | 76.01 | 151.7 | |
| 23 | 853 | 88.31 | 156.8 | |
| 24 | 955 | 317.82 | 504.0 | |
| 25 | 10,380 | 75.00 | 10.9 | Upper Marker |

Assay Class: High Sensitivity DNA Assay
Data Path: C:\...ents and Settings\Bioanalyzer\2012-07-26\2012-07-26_003.xad

Created: 7/26/2012 12:59:32 PM
Modified: 7/26/2012 3:11:16 PM

Electropherogram Summary Continued ...

... Region table for sample 7 : 151K7 Soni 4+3+2Cycles 1:6

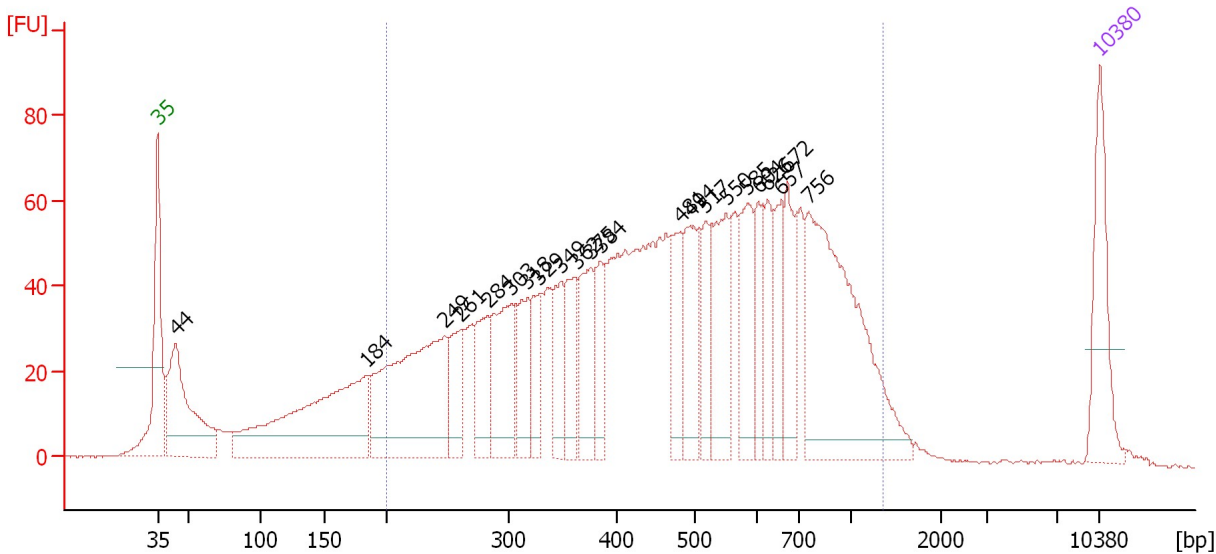
| From [bp] | To [bp] | Average Size [bp] | Molarity [pmol/l] | Conc. [pg/μl] | Corr. Area | % of Total | Size distribution in CV [%] | Color |
|-----------|---------|-------------------|-------------------|---------------|------------|------------|-----------------------------|-------|
| 242 | 1,684 | 648 | 7,377.4 | 2,397.12 | 1,969.3 | 82 | 46.6 | ■ |

Assay Class: High Sensitivity DNA Assay
 Data Path: C:\...ents and Settings\Bioanalyzer\2012-07-26\2012-07-26_003.xad

Created: 7/26/2012 12:59:32 PM
 Modified: 7/26/2012 3:11:16 PM

Electropherogram Summary Continued ...

132B20-1 Soni 4+3+2Cycles 1:6



Overall Results for sample 8 : 132B20-1 Soni 4+3+2Cycles 1:6

Number of peaks found: 22 Corr. Area 1: 2,021.8
 Noise: 0.1

Peak table for sample 8 : 132B20-1 Soni 4+3+2Cycles 1:6

| Peak | Size [bp] | Conc. [pg/μl] | Molarity [pmol/l] | Observations |
|------|-----------|---------------|-------------------|--------------|
| 1 | 35 | 125.00 | 5,411.3 | Lower Marker |
| 2 | 44 | 201.45 | 6,963.1 | |
| 3 | 184 | 302.05 | 2,481.9 | |
| 4 | 249 | 294.81 | 1,797.4 | |
| 5 | 261 | 61.86 | 359.2 | |
| 6 | 284 | 74.97 | 399.9 | |
| 7 | 303 | 115.19 | 575.4 | |
| 8 | 318 | 64.11 | 305.7 | |
| 9 | 329 | 53.89 | 248.2 | |
| 10 | 349 | 61.99 | 269.5 | |
| 11 | 362 | 65.85 | 275.4 | |
| 12 | 375 | 81.30 | 328.1 | |
| 13 | 384 | 52.86 | 208.6 | |
| 14 | 481 | 59.81 | 188.6 | |
| 15 | 494 | 96.77 | 297.0 | |
| 16 | 517 | 55.67 | 163.3 | |
| 17 | 550 | 100.34 | 276.2 | |
| 18 | 585 | 80.91 | 209.4 | |
| 19 | 604 | 49.64 | 124.5 | |
| 20 | 626 | 49.80 | 120.5 | |
| 21 | 657 | 49.98 | 115.3 | |
| 22 | 672 | 69.80 | 157.4 | |
| 23 | 756 | 307.64 | 616.8 | |
| 24 | 10,380 | 75.00 | 10.9 | Upper Marker |

Assay Class: High Sensitivity DNA Assay
Data Path: C:\...ents and Settings\Bioanalyzer\2012-07-26\2012-07-26_003.xad

Created: 7/26/2012 12:59:32 PM
Modified: 7/26/2012 3:11:16 PM

Electropherogram Summary Continued ...

... Region table for sample 8 : 132B20-1 Soni 4+3+2Cycles 1:6

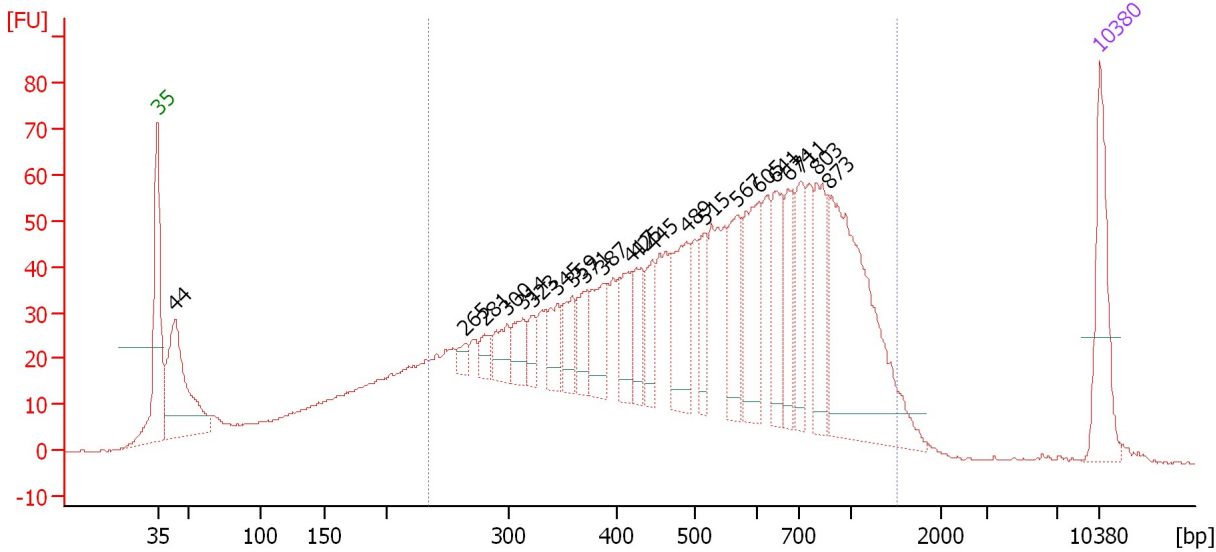
| From [bp] | To [bp] | Average Size [bp] | Molarity [pmol/l] | Conc. [pg/μl] | Corr. Area | % of Total | Size distribution in CV [%] | Color |
|-----------|---------|-------------------|-------------------|---------------|------------|------------|-----------------------------|-------|
| 200 | 1,359 | 517 | 9,100.8 | 2,402.22 | 2,021.8 | 82 | 44.3 | ■ |

Assay Class: High Sensitivity DNA Assay
 Data Path: C:\...ents and Settings\Bioanalyzer\2012-07-26\2012-07-26_003.xad

Created: 7/26/2012 12:59:32 PM
 Modified: 7/26/2012 3:11:16 PM

Electropherogram Summary Continued ...

707G02-1 Soni 4+3+2Cycles 1:6



Overall Results for sample 9 : 707G02-1 Soni 4+3+2Cycles 1:6

Number of peaks found: 22 Corr. Area 1: 1,697.0
 Noise: 0.1

Peak table for sample 9 : 707G02-1 Soni 4+3+2Cycles 1:6

| Peak | Size [bp] | Conc. [pg/μl] | Molarity [pmol/l] | Observations |
|------|-----------|---------------|-------------------|--------------|
| 1 | 35 | 125.00 | 5,411.3 | Lower Marker |
| 2 | 44 | 197.94 | 6,885.0 | |
| 3 | 265 | 14.05 | 80.3 | |
| 4 | 281 | 17.50 | 94.3 | |
| 5 | 300 | 35.54 | 179.7 | |
| 6 | 314 | 35.04 | 169.3 | |
| 7 | 323 | 22.46 | 105.4 | |
| 8 | 345 | 35.13 | 154.1 | |
| 9 | 359 | 40.03 | 169.1 | |
| 10 | 371 | 36.30 | 148.4 | |
| 11 | 387 | 64.18 | 251.2 | |
| 12 | 417 | 50.36 | 182.8 | |
| 13 | 425 | 41.63 | 148.4 | |
| 14 | 445 | 43.11 | 146.9 | |
| 15 | 489 | 86.46 | 268.0 | |
| 16 | 515 | 44.26 | 130.1 | |
| 17 | 567 | 67.15 | 179.4 | |
| 18 | 605 | 93.75 | 234.7 | |
| 19 | 641 | 67.03 | 158.4 | |
| 20 | 674 | 52.19 | 117.4 | |
| 21 | 711 | 62.15 | 132.4 | |
| 22 | 803 | 74.90 | 141.4 | |
| 23 | 873 | 257.93 | 447.4 | |
| 24 | 10,380 | 75.00 | 10.9 | Upper Marker |

Assay Class: High Sensitivity DNA Assay
Data Path: C:\...ents and Settings\Bioanalyzer\2012-07-26\2012-07-26_003.xad

Created: 7/26/2012 12:59:32 PM
Modified: 7/26/2012 3:11:16 PM

Electropherogram Summary Continued ...

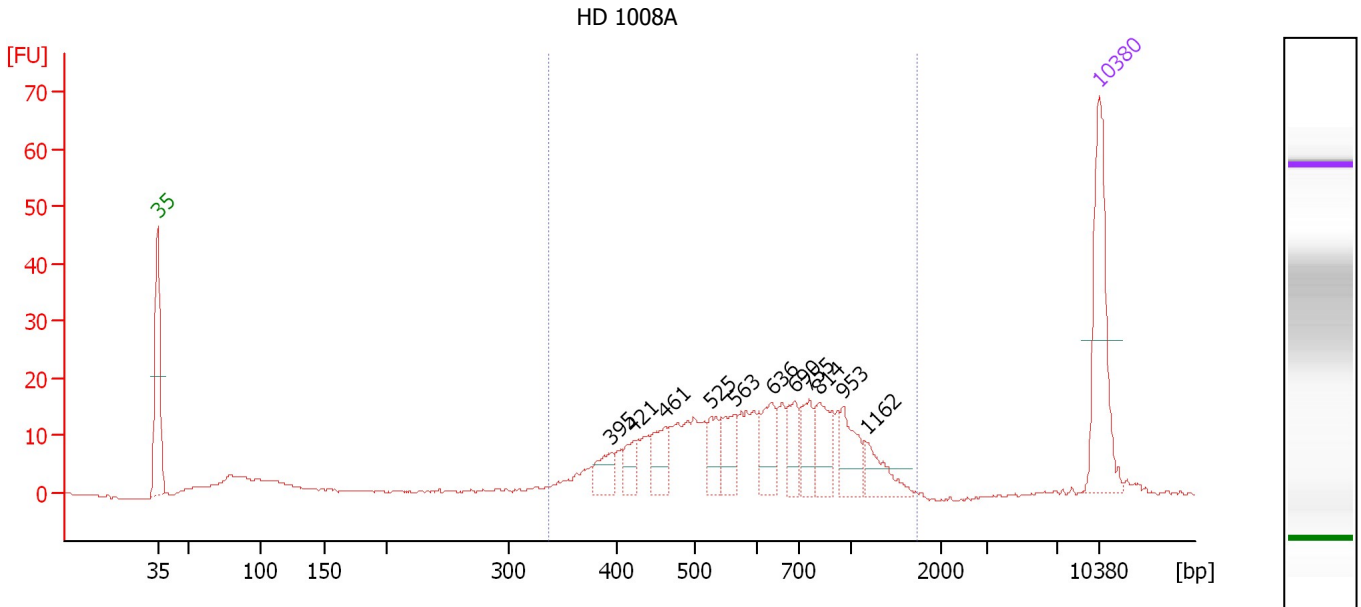
... Region table for sample 9 : 707G02-1 Soni 4+3+2Cycles 1:6

| From [bp] | To [bp] | Average Size [bp] | Molarity [pmol/l] | Conc. [pg/μl] | Corr. Area | % of Total | Size distribution in CV [%] | Color |
|-----------|---------|-------------------|-------------------|---------------|------------|------------|-----------------------------|-------|
| 234 | 1,516 | 577 | 8,015.2 | 2,360.37 | 1,697.0 | 78 | 45.6 | ■ |

Assay Class: High Sensitivity DNA Assay
 Data Path: C:\...ents and Settings\Bioanalyzer\2012-07-26\2012-07-26_003.xad

Created: 7/26/2012 12:59:32 PM
 Modified: 7/26/2012 3:11:16 PM

Electropherogram Summary Continued ...



Overall Results for sample 10 : HD 1008A

Number of peaks found: 11 Corr. Area 1: 303.5
 Noise: 0.1

Peak table for sample 10 : HD 1008A

| Peak | Size [bp] | Conc. [pg/μl] | Molarity [pmol/l] | Observations |
|------|-----------|---------------|-------------------|--------------|
| 1 | 35 | 125.00 | 5,411.3 | Lower Marker |
| 2 | 395 | 22.62 | 86.9 | |
| 3 | 421 | 18.69 | 67.3 | |
| 4 | 461 | 28.86 | 94.8 | |
| 5 | 525 | 24.03 | 69.3 | |
| 6 | 563 | 28.61 | 77.0 | |
| 7 | 636 | 32.02 | 76.2 | |
| 8 | 690 | 23.40 | 51.4 | |
| 9 | 755 | 25.41 | 51.0 | |
| 10 | 814 | 34.31 | 63.9 | |
| 11 | 953 | 31.51 | 50.1 | |
| 12 | 1,162 | 23.07 | 30.1 | |
| 13 | 10,380 | 75.00 | 10.9 | Upper Marker |

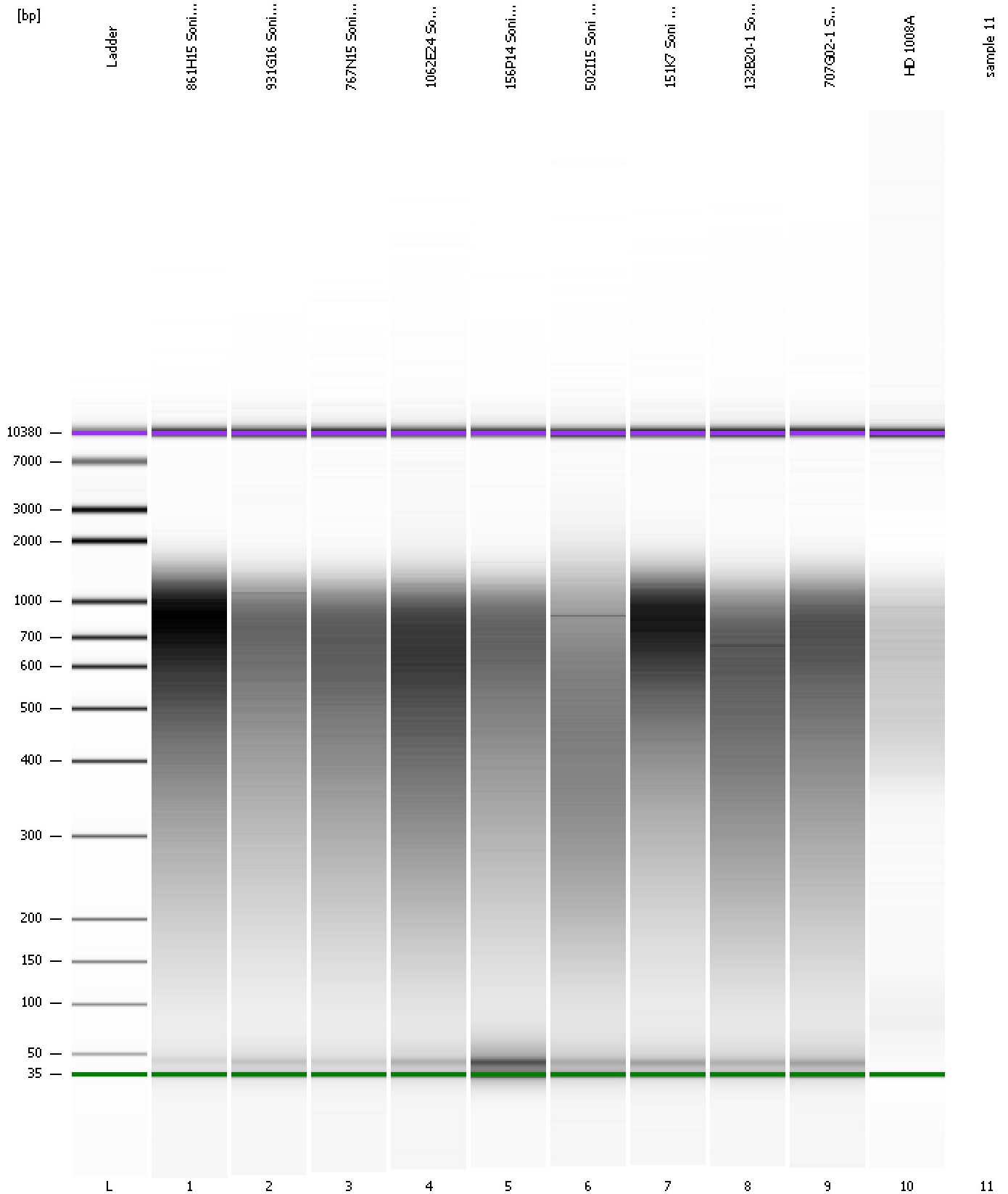
Region table for sample 10 : HD 1008A

| From [bp] | To [bp] | Average Size [bp] | Molarity [pmol/l] | Conc. [pg/μl] | Corr. Area | % of Total | Size distribution in CV [%] | Color |
|-----------|---------|-------------------|-------------------|---------------|------------|------------|-----------------------------|-------|
| 336 | 1,731 | 656 | 1,240.6 | 466.06 | 303.5 | 88 | 36.6 | Blue |

Assay Class: High Sensitivity DNA Assay
Data Path: C:\...ents and Settings\Bioanalyzer\2012-07-26\2012-07-26_003.xad

Created: 7/26/2012 12:59:32 PM
Modified: 7/26/2012 3:11:16 PM

Gel Image



Assay Class: High Sensitivity DNA Assay
Data Path: C:\...ents and Settings\Bioanalyzer\2012-07-26\2012-07-26_003.xad

Created: 7/26/2012 12:59:32 PM
Modified: 7/26/2012 3:11:16 PM

Invalid Samples

Sample 11 has not been run, no results available.