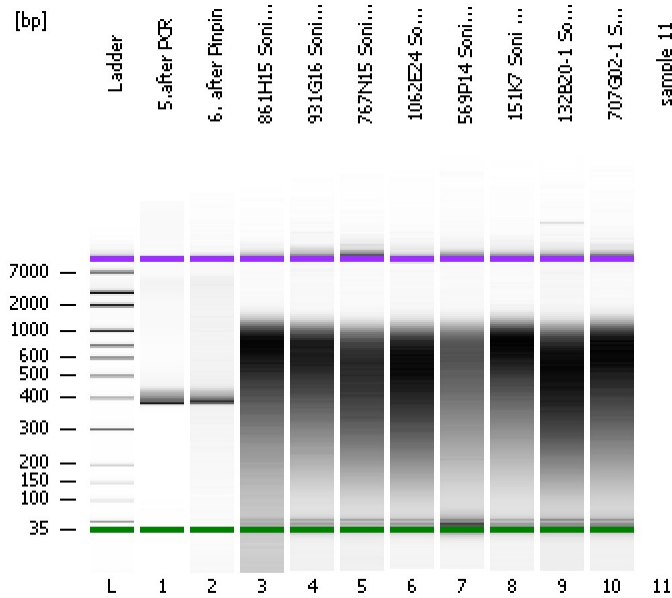


Assay Class: High Sensitivity DNA Assay  
Data Path: C:\...ents and Settings\Bioanalyzer\2012-07-26\2012-07-26\_004.xad

Created: 7/26/2012 2:58:42 PM  
Modified: 7/26/2012 4:22:48 PM

**Electrophoresis File Run Summary**



Instrument Information:

Instrument Name: DE13701086      Firmware: C.01.069  
Serial#: DE13701086      Type: G2938B

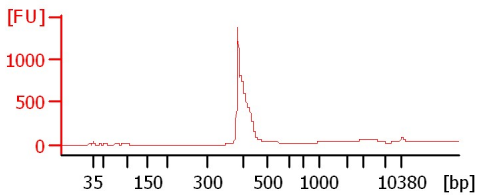
Assay Information:

Assay Origin Path: C:\Program Files\Agilent\2100 bioanalyzer\2100 expert\assays\dsDNA\High Sensitivity DNA.xsy  
Assay Class: High Sensitivity DNA Assay  
Version: 1.03  
Assay Comments: Copyright © 2003-2010 Agilent Technologies

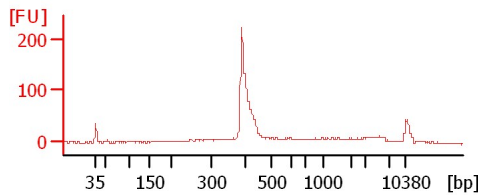
Chip Information:

Chip Lot #:   
Reagent Kit Lot #:   
Chip Comments:

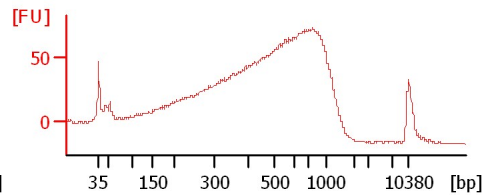
**5.after PCR**



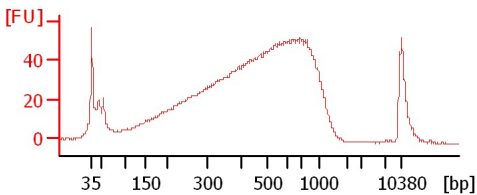
**6. after Pinpin**



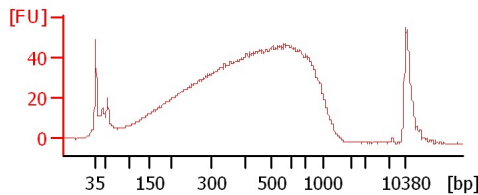
**861H15 Soni 1:6**



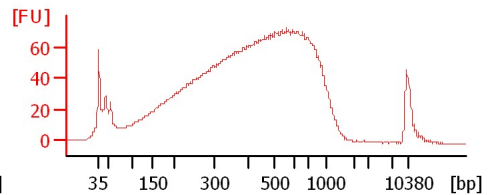
**931G16 Soni 1:6**



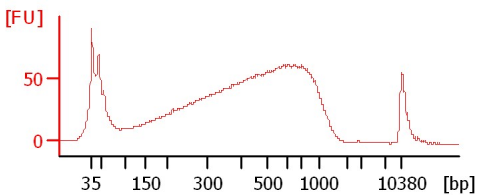
**767N15 Soni 4 1:6**



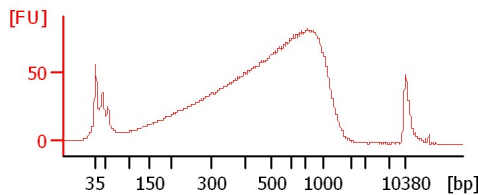
**1062E24 Soni 1:6**



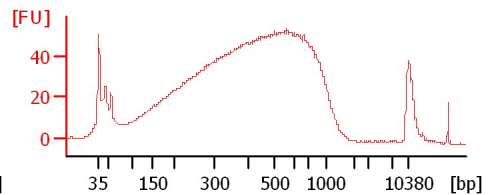
**569P14 Soni 1:6**



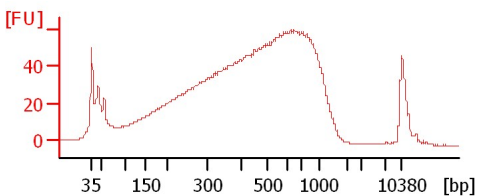
**151K7 Soni 1:6**



**132B20-1 Soni 1:6**



**707G02-1 Soni 1:6**



Assay Class: High Sensitivity DNA Assay  
 Data Path: C:\...ents and Settings\Bioanalyzer\2012-07-26\2012-07-26\_004.xad

Created: 7/26/2012 2:58:42 PM  
 Modified: 7/26/2012 4:22:48 PM

**Electrophoresis File Run Summary (Chip Summary)**

Sample Name	Sample Comment	Rest. Digest	Status	Observation	Result Label	Result Color
5.after PCR		<input type="checkbox"/>	✓			
6. after Pinpin		<input type="checkbox"/>	✓			
861H15 Soni 1:6		<input type="checkbox"/>	✓			
931G16 Soni 1:6		<input type="checkbox"/>	✓			
767N15 Soni 4 1:6		<input type="checkbox"/>	✓			
1062E24 Soni 1:6		<input type="checkbox"/>	✓			
569P14 Soni 1:6		<input type="checkbox"/>	✓			
151K7 Soni 1:6		<input type="checkbox"/>	✓			
132B20-1 Soni 1:6		<input type="checkbox"/>	✓			
707G02-1 Soni 1:6		<input type="checkbox"/>	✓			
sample 11		<input type="checkbox"/>				
Ladder		<input type="checkbox"/>	✓			

**Chip Lot #**

**Reagent Kit Lot #**

**Chip Comments :**

Assay Class: High Sensitivity DNA Assay  
Data Path: C:\...ents and Settings\Bioanalyzer\2012-07-26\2012-07-26\_004.xad

Created: 7/26/2012 2:58:42 PM  
Modified: 7/26/2012 4:22:48 PM

**Electrophoresis Assay Details**

**General Analysis Settings**

Number of Available Sample and Ladder Wells (Max.) : 12  
Minimum Visible Range [s] : 32  
Maximum Visible Range [s] : 138  
Start Analysis Time Range [s] : 33  
End Analysis Time Range [s] : 137.5  
Ladder Concentration [pg/μl] : 1950  
Uses Standard Area for Ladder Fragments  
Lower Marker Concentration [pg/μl] : 125  
Upper Marker Concentration [pg/μl] : 75  
Used Upper Marker for Quantitation  
Standard Curve Fit is Point to Point  
Show Data Aligned to Lower and Upper Marker

**Integrator Settings**

Integration Start Time [s] : 33.05  
Integration End Time [s] : 137  
Slope Threshold : 0.8  
Height Threshold [FU] : 5  
Area Threshold : 0.1  
Width Threshold [s] : 0.6  
Baseline Plateau [s] : 0.5

**Filter Settings**

Filter Width [s] : 0.5  
Polynomial Order : 4

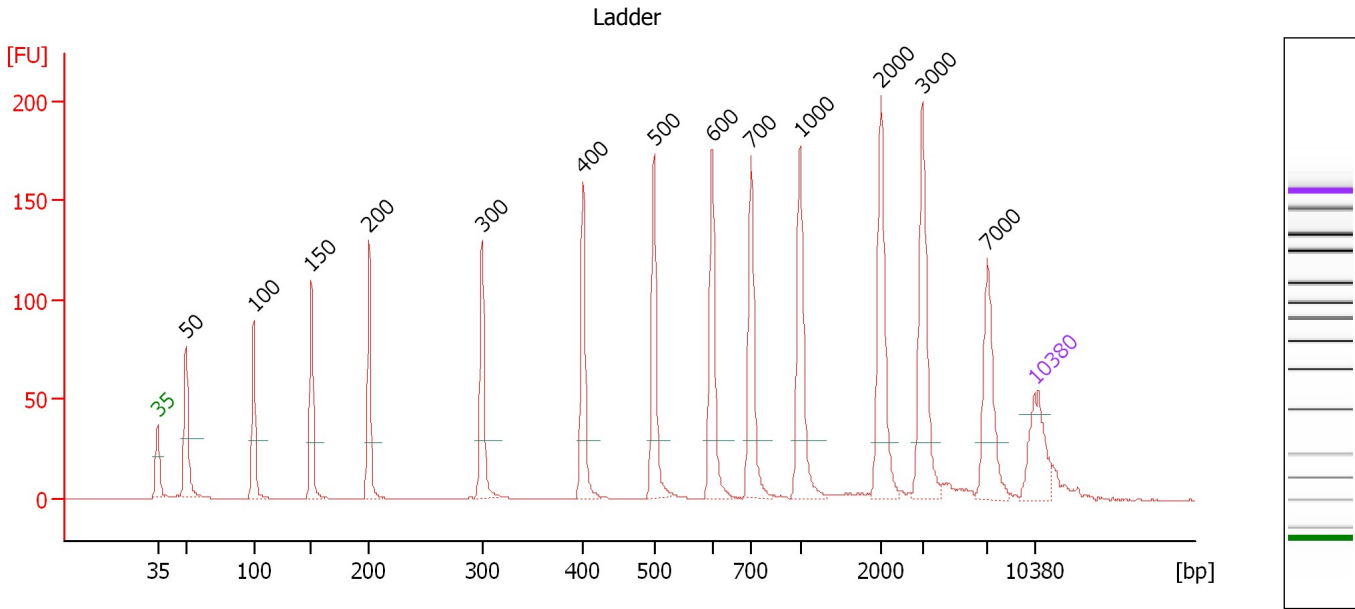
**Ladder**

Ladder Peak	Size	Area
1	35	160
2	50	210
3	100	208
4	150	221
5	200	242
6	300	270
7	400	305
8	500	306
9	600	336
10	700	321
11	1000	366
12	2000	413
13	3000	411
14	7000	400
15	10380	214

Assay Class: High Sensitivity DNA Assay  
 Data Path: C:\...ents and Settings\Bioanalyzer\2012-07-26\2012-07-26\_004.xad

Created: 7/26/2012 2:58:42 PM  
 Modified: 7/26/2012 4:22:48 PM

**Electropherogram Summary**



**Overall Results for Ladder**

Noise: 0.1

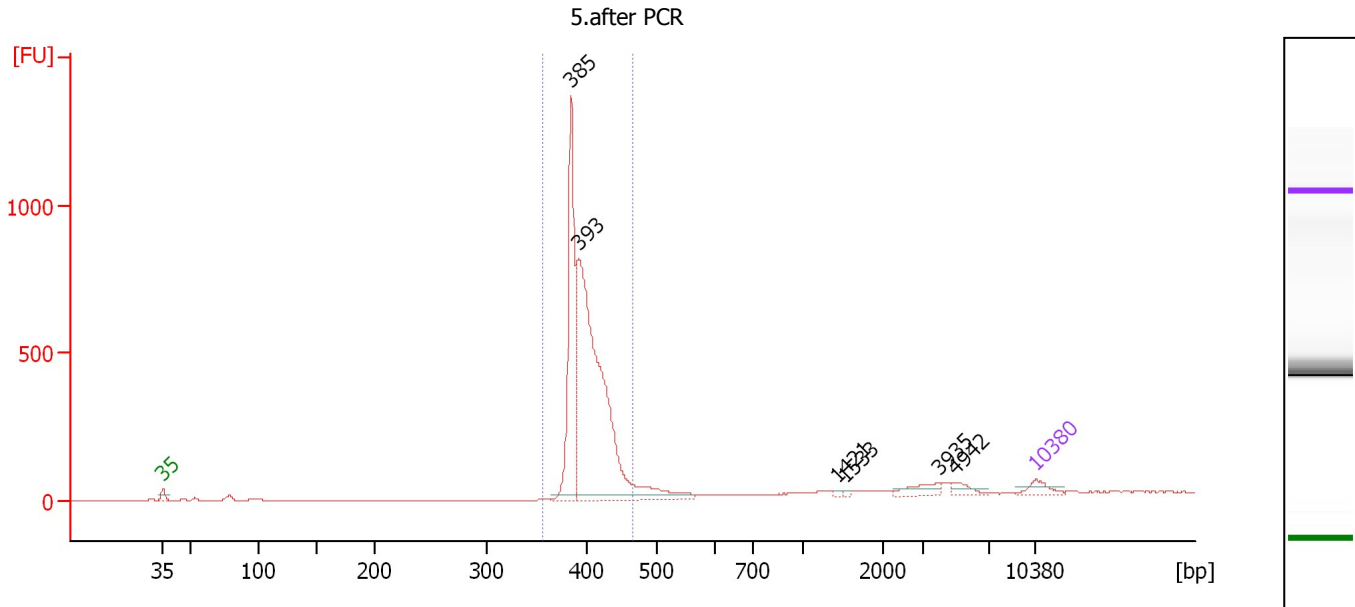
**Peak table for Ladder**

Peak	Size [bp]	Conc. [pg/μl]	Molarity [pmol/l]	Observations
1	35	125.00	5,411.3	Lower Marker
2	50	150.00	4,545.5	Ladder Peak
3	100	150.00	2,272.7	Ladder Peak
4	150	150.00	1,515.2	Ladder Peak
5	200	150.00	1,136.4	Ladder Peak
6	300	150.00	757.6	Ladder Peak
7	400	150.00	568.2	Ladder Peak
8	500	150.00	454.5	Ladder Peak
9	600	150.00	378.8	Ladder Peak
10	700	150.00	324.7	Ladder Peak
11	1,000	150.00	227.3	Ladder Peak
12	2,000	150.00	113.6	Ladder Peak
13	3,000	150.00	75.8	Ladder Peak
14	7,000	150.00	32.5	Ladder Peak
15	10,380	75.00	10.9	Upper Marker

Assay Class: High Sensitivity DNA Assay  
 Data Path: C:\...ents and Settings\Bioanalyzer\2012-07-26\2012-07-26\_004.xad

Created: 7/26/2012 2:58:42 PM  
 Modified: 7/26/2012 4:22:48 PM

**Electropherogram Summary Continued ...**



**Setpoint Deviations for sample 1 : 5.after PCR**

Height Threshold [FU] : 20

**Overall Results for sample 1 : 5.after PCR**

Number of peaks found: 6                      Corr. Area 1: 3,390.4  
 Noise: 0.2

**Peak table for sample 1 : 5.after PCR**

Peak	Size [bp]	Conc. [pg/μl]	Molarity [pmol/l]	Observations
1	35	125.00	5,411.3	Lower Marker
2	385	1,417.68	5,583.0	
3	393	3,330.90	12,856.4	
4	1,421	17.00	18.1	
5	1,533	12.66	12.5	
6	3,935	111.52	42.9	
7	4,942	74.75	22.9	
8	10,380	75.00	10.9	Upper Marker

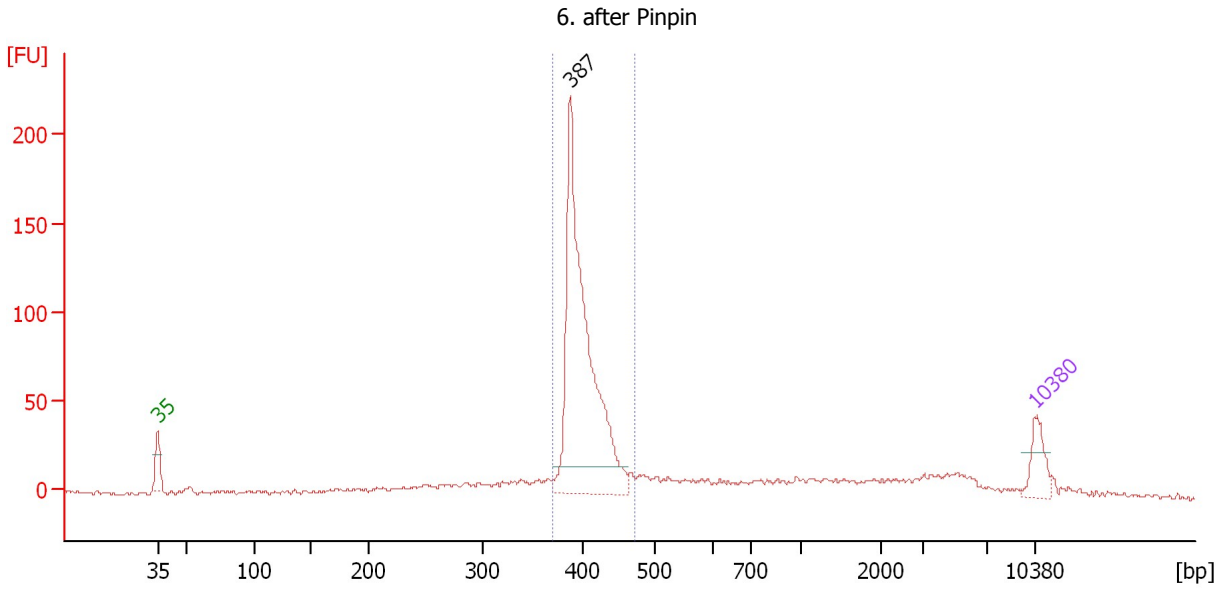
**Region table for sample 1 : 5.after PCR**

From [bp]	To [bp]	Average Size [bp]	Molarity [pmol/l]	Conc. [pg/μl]	Corr. Area	% of Total	Size distribution in CV [%]	Color
356	467	403	16,270.9	4,317.29	3,390.4	88	4.7	Blue

Assay Class: High Sensitivity DNA Assay  
 Data Path: C:\...ents and Settings\Bioanalyzer\2012-07-26\2012-07-26\_004.xad

Created: 7/26/2012 2:58:42 PM  
 Modified: 7/26/2012 4:22:48 PM

**Electropherogram Summary Continued ...**



**Setpoint Deviations for sample 2 : 6. after Pinpin**

Height Threshold [FU] : 15

**Overall Results for sample 2 : 6. after Pinpin**

Number of peaks found: 1                      Corr. Area 1: 563.0  
 Noise: 1.1

**Peak table for sample 2 : 6. after Pinpin**

Peak	Size [bp]	Conc. [pg/μl]	Molarity [pmol/l]	Observations
1	35	125.00	5,411.3	Lower Marker
2	387	1,140.17	4,464.7	
3	10,380	75.00	10.9	Upper Marker

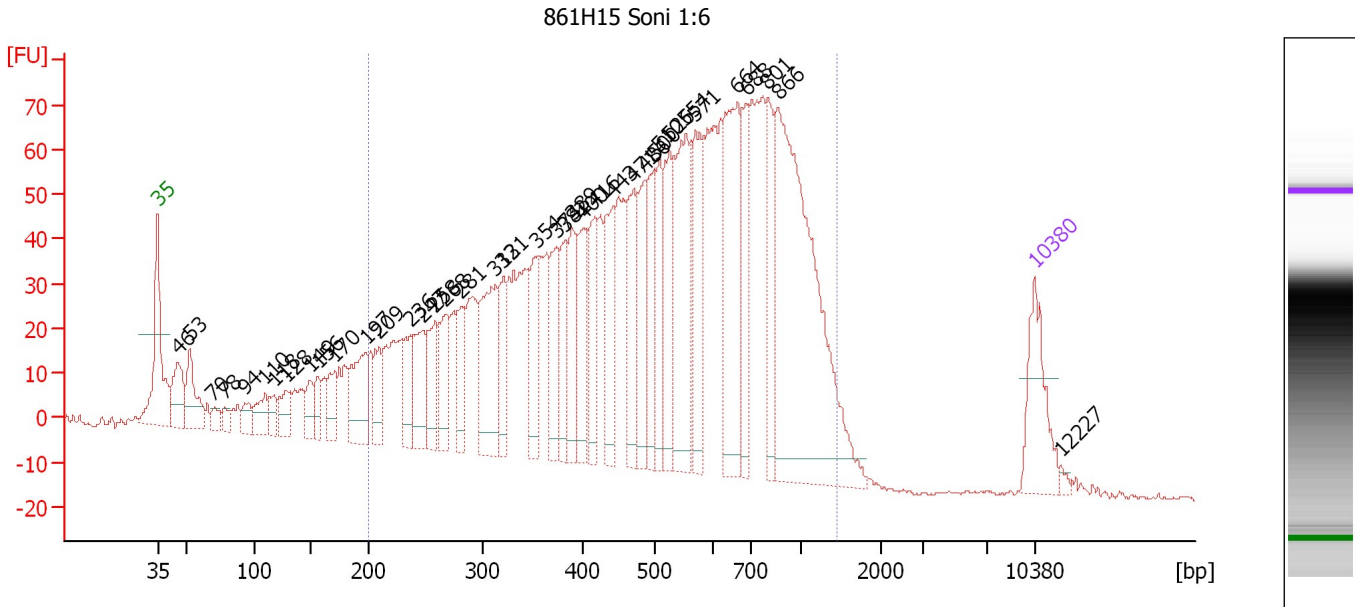
**Region table for sample 2 : 6. after Pinpin**

From [bp]	To [bp]	Average Size [bp]	Molarity [pmol/l]	Conc. [pg/μl]	Corr. Area	% of Total	Size distribution in CV [%]	Color
370	472	403	4,250.8	1,128.23	563.0	58	5.0	Blue

Assay Class: High Sensitivity DNA Assay  
 Data Path: C:\...ents and Settings\Bioanalyzer\2012-07-26\2012-07-26\_004.xad

Created: 7/26/2012 2:58:42 PM  
 Modified: 7/26/2012 4:22:48 PM

**Electropherogram Summary Continued ...**



**Overall Results for sample 3 : 861H15 Soni 1:6**

Number of peaks found: 39                      Corr. Area 1: 2,410.2  
 Noise: 0.5

**Peak table for sample 3 : 861H15 Soni 1:6**

Peak	Size [bp]	Conc. [pg/μl]	Molarity [pmol/l]	Observations
1	35	125.00	5,411.3	Lower Marker
2	46	79.10	2,630.8	
3	53	78.61	2,252.1	
4	70	19.09	414.6	
5	78	15.80	305.4	
6	94	25.25	409.0	
7	110	43.21	596.8	
8	118	27.16	349.4	
9	128	40.35	475.9	
10	149	32.72	333.3	
11	156	32.34	314.4	
12	170	42.23	377.3	
13	197	95.16	732.0	
14	209	49.10	356.2	
15	236	60.63	388.5	
16	247	76.97	472.5	
17	258	67.66	397.0	
18	268	59.77	338.4	
19	281	54.55	294.0	
20	313	143.86	696.0	
21	321	59.86	282.3	
22	354	86.81	371.2	
23	374	83.29	337.3	
24	382	64.69	256.8	
25	389	87.14	339.3	
26	400	81.58	308.8	

Assay Class: High Sensitivity DNA Assay  
 Data Path: C:\...ents and Settings\Bioanalyzer\2012-07-26\2012-07-26\_004.xad

Created: 7/26/2012 2:58:42 PM  
 Modified: 7/26/2012 4:22:48 PM

**Electropherogram Summary Continued ...**

**... Peak table for sample 3 : 861H15 Soni 1:6**

Peak	Size [bp]	Conc. [pg/µl]	Molarity [pmol/l]	Observations
27	416	78.78	286.9	
28	443	96.65	330.8	
29	471	107.39	345.5	
30	486	92.79	289.4	
31	500	83.56	253.2	
32	510	84.86	252.1	
33	526	103.57	298.3	
34	554	188.81	516.2	
35	571	116.37	308.6	
36	664	193.02	440.4	
37	688	91.79	202.1	
38	801	87.00	164.5	
39	866	470.85	823.7	
40	▶ 10,380	75.00	10.9	Upper Marker
41	12,227	0.00	0.0	

**Region table for sample 3 : 861H15 Soni 1:6**

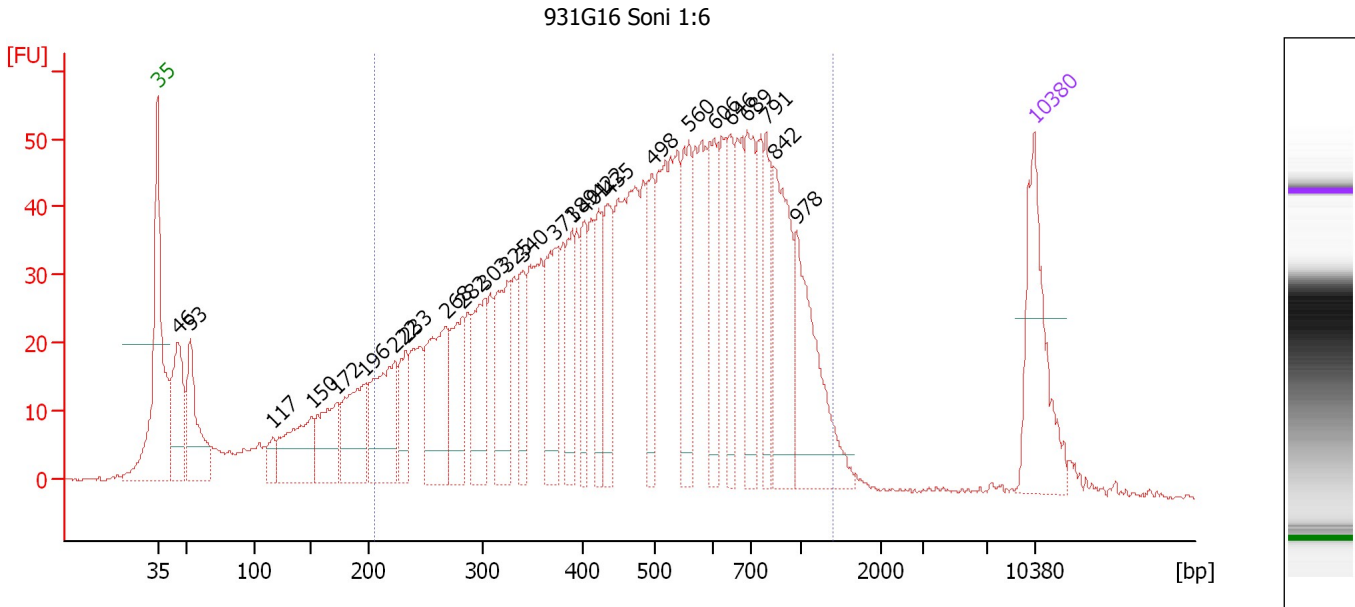
From [bp]	To [bp]	Average Size [bp]	Molarity [pmol/l]	Conc. [pg/µl]	Corr. Area	% of Total	Size distribution in CV [%]	Color
199	1,463	562	13,304.2	3,750.52	2,410.2	87	44.7	■



Assay Class: High Sensitivity DNA Assay  
 Data Path: C:\...ents and Settings\Bioanalyzer\2012-07-26\2012-07-26\_004.xad

Created: 7/26/2012 2:58:42 PM  
 Modified: 7/26/2012 4:22:48 PM

**Electropherogram Summary Continued ...**



**Overall Results for sample 4 : 931G16 Soni 1:6**

Number of peaks found: 26                      Corr. Area 1: 1,684.5  
 Noise: 0.2

**Peak table for sample 4 : 931G16 Soni 1:6**

Peak	Size [bp]	Conc. [pg/μl]	Molarity [pmol/l]	Observations
1	35	125.00	5,411.3	Lower Marker
2	46	89.62	2,967.0	
3	53	91.62	2,601.5	
4	117	17.65	229.1	
5	150	78.78	794.0	
6	172	62.61	552.9	
7	196	77.96	601.5	
8	222	98.62	672.2	
9	233	41.29	268.6	
10	268	103.27	584.1	
11	282	61.54	330.4	
12	303	73.41	367.5	
13	325	76.12	354.7	
14	340	41.20	183.4	
15	371	75.29	307.3	
16	389	52.44	204.3	
17	401	40.99	154.8	
18	422	42.19	151.6	
19	435	59.11	205.8	
20	498	48.53	147.7	
21	560	65.60	177.5	
22	606	46.77	117.0	
23	646	47.51	111.5	
24	689	68.07	149.7	
25	791	40.79	78.1	
26	842	88.40	159.0	

Assay Class: High Sensitivity DNA Assay  
Data Path: C:\...ents and Settings\Bioanalyzer\2012-07-26\2012-07-26\_004.xad

Created: 7/26/2012 2:58:42 PM  
Modified: 7/26/2012 4:22:48 PM

**Electropherogram Summary Continued ...****... Peak table for sample 4 : 931G16 Soni 1:6**

Peak	Size [bp]	Conc. [pg/ $\mu$ l]	Molarity [pmol/l]	Observations
27	978	97.01	150.3	
28	▶ 10,380	75.00	10.9	Upper Marker

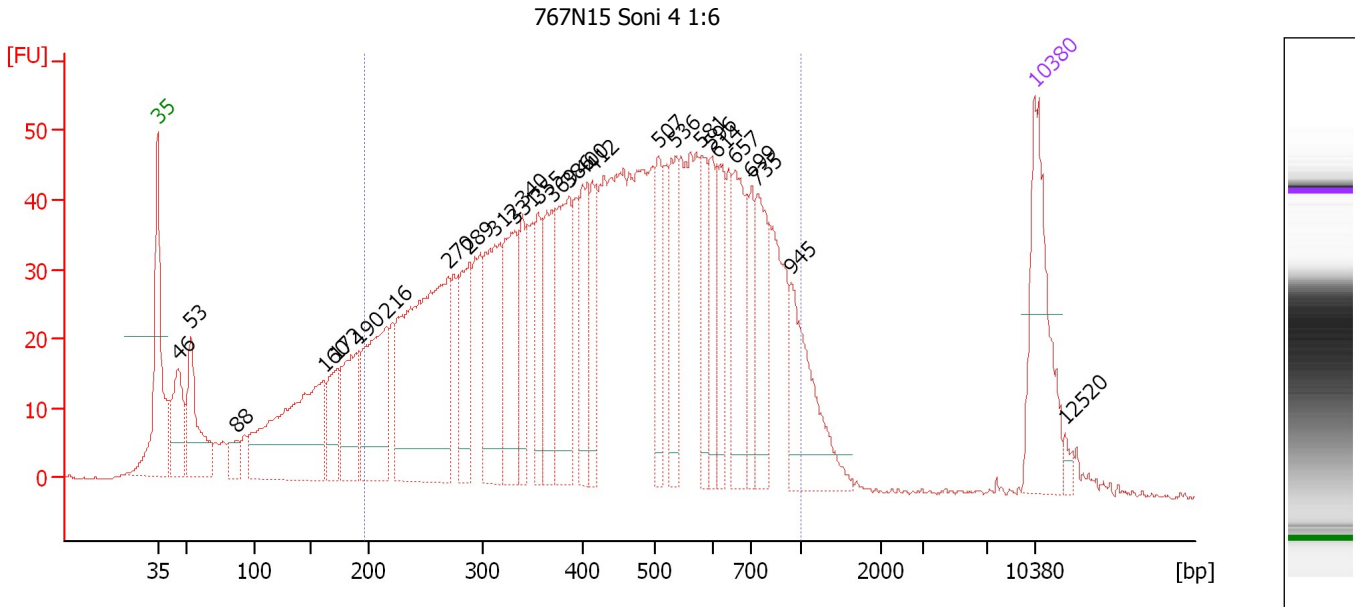
**Region table for sample 4 : 931G16 Soni 1:6**

From [bp]	To [bp]	Average Size [bp]	Molarity [pmol/l]	Conc. [pg/ $\mu$ l]	Corr. Area	% of Total	Size distribution in CV [%]	Color
205	1,393	530	8,041.7	2,193.53	1,684.5	83	43.0	■

Assay Class: High Sensitivity DNA Assay  
 Data Path: C:\...ents and Settings\Bioanalyzer\2012-07-26\2012-07-26\_004.xad

Created: 7/26/2012 2:58:42 PM  
 Modified: 7/26/2012 4:22:48 PM

**Electropherogram Summary Continued ...**



**Overall Results for sample 5 : 767N15 Soni 4 1:6**

Number of peaks found: 27                      Corr. Area 1: 1,728.9  
 Noise: 0.2

**Peak table for sample 5 : 767N15 Soni 4 1:6**

Peak	Size [bp]	Conc. [pg/μl]	Molarity [pmol/l]	Observations
1	35	125.00	5,411.3	Lower Marker
2	46	65.31	2,152.1	
3	53	83.01	2,355.2	
4	88	19.23	332.6	
5	160	190.19	1,796.2	
6	172	43.96	387.2	
7	190	70.68	563.6	
8	216	115.18	809.0	
9	270	265.24	1,489.5	
10	289	66.81	350.6	
11	312	102.64	498.1	
12	331	86.88	397.1	
13	340	44.46	198.2	
14	355	44.24	188.8	
15	369	60.40	248.1	
16	386	93.43	366.9	
17	400	61.43	232.9	
18	412	44.48	163.4	
19	507	47.94	143.2	
20	536	52.77	149.1	
21	581	43.62	113.7	
22	596	39.32	100.0	
23	614	41.20	101.6	
24	657	65.52	151.1	
25	699	35.60	77.1	
26	735	56.54	116.5	

Assay Class: High Sensitivity DNA Assay  
 Data Path: C:\...ents and Settings\Bioanalyzer\2012-07-26\2012-07-26\_004.xad

Created: 7/26/2012 2:58:42 PM  
 Modified: 7/26/2012 4:22:48 PM

### Electropherogram Summary Continued ...

#### ... Peak table for sample 5 : 767N15 Soni 4 1:6

Peak	Size [bp]	Conc. [pg/μl]	Molarity [pmol/l]	Observations
27	945	73.99	118.6	
28	10,380	75.00	10.9	Upper Marker
29	12,520	0.00	0.0	

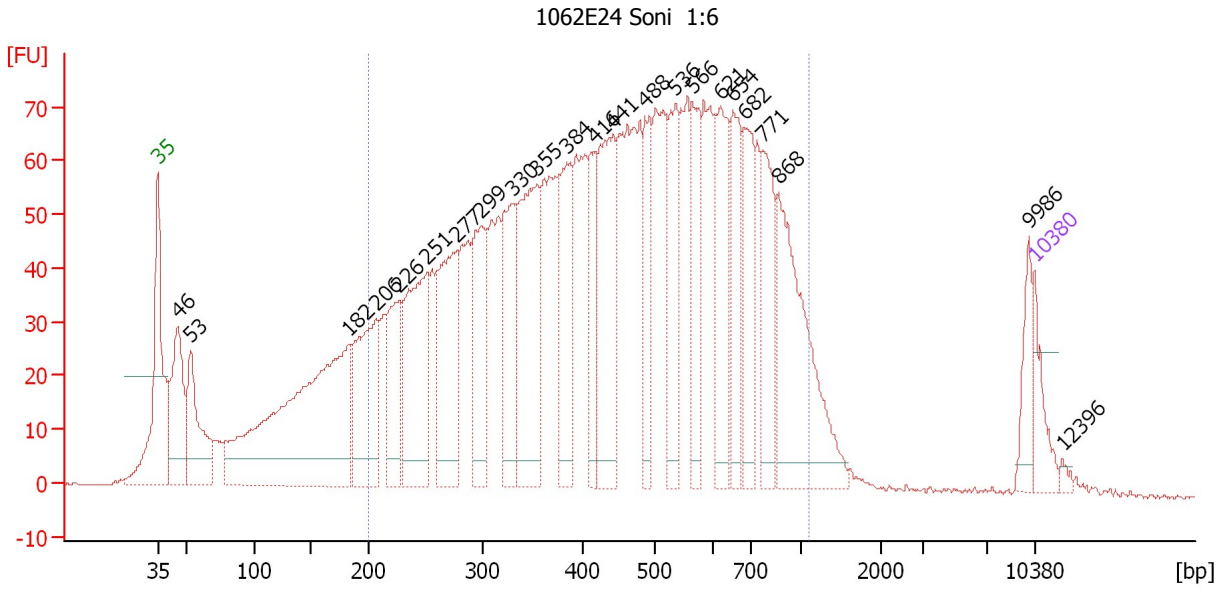
#### Region table for sample 5 : 767N15 Soni 4 1:6

From [bp]	To [bp]	Average Size [bp]	Molarity [pmol/l]	Conc. [pg/μl]	Corr. Area	% of Total	Size distribution in CV [%]	Color
195	1,000	468	8,894.8	2,209.65	1,728.9	81	38.6	■

Assay Class: High Sensitivity DNA Assay  
 Data Path: C:\...ents and Settings\Bioanalyzer\2012-07-26\2012-07-26\_004.xad

Created: 7/26/2012 2:58:42 PM  
 Modified: 7/26/2012 4:22:48 PM

**Electropherogram Summary Continued ...**



**Overall Results for sample 6 : 1062E24 Soni 1:6**

Number of peaks found: 23                      Corr. Area 1: 2,560.7  
 Noise: 0.2

**Peak table for sample 6 : 1062E24 Soni 1:6**

Peak	Size [bp]	Conc. [pg/μl]	Molarity [pmol/l]	Observations
1	35	125.00	5,411.3	Lower Marker
2	46	319.73	10,601.4	
3	53	294.76	8,349.9	
4	182	1,124.32	9,381.1	
5	206	404.75	2,975.4	
6	226	240.15	1,612.5	
7	251	446.76	2,695.1	
8	277	385.22	2,105.4	
9	299	282.67	1,430.2	
10	330	285.48	1,309.6	
11	355	461.98	1,974.5	
12	384	265.58	1,049.1	
13	416	179.86	655.9	
14	441	376.79	1,295.5	
15	488	186.89	580.8	
16	536	228.17	644.6	
17	566	174.23	466.6	
18	621	261.27	637.5	
19	654	204.72	474.3	
20	682	208.30	462.5	
21	771	208.43	409.8	
22	868	455.48	794.8	
23	9,986	70.89	10.8	
24	10,380	75.00	10.9	Upper Marker
25	12,396	0.00	0.0	

Assay Class: High Sensitivity DNA Assay  
Data Path: C:\...ents and Settings\Bioanalyzer\2012-07-26\2012-07-26\_004.xad

Created: 7/26/2012 2:58:42 PM  
Modified: 7/26/2012 4:22:48 PM

**Electropherogram Summary Continued ...**

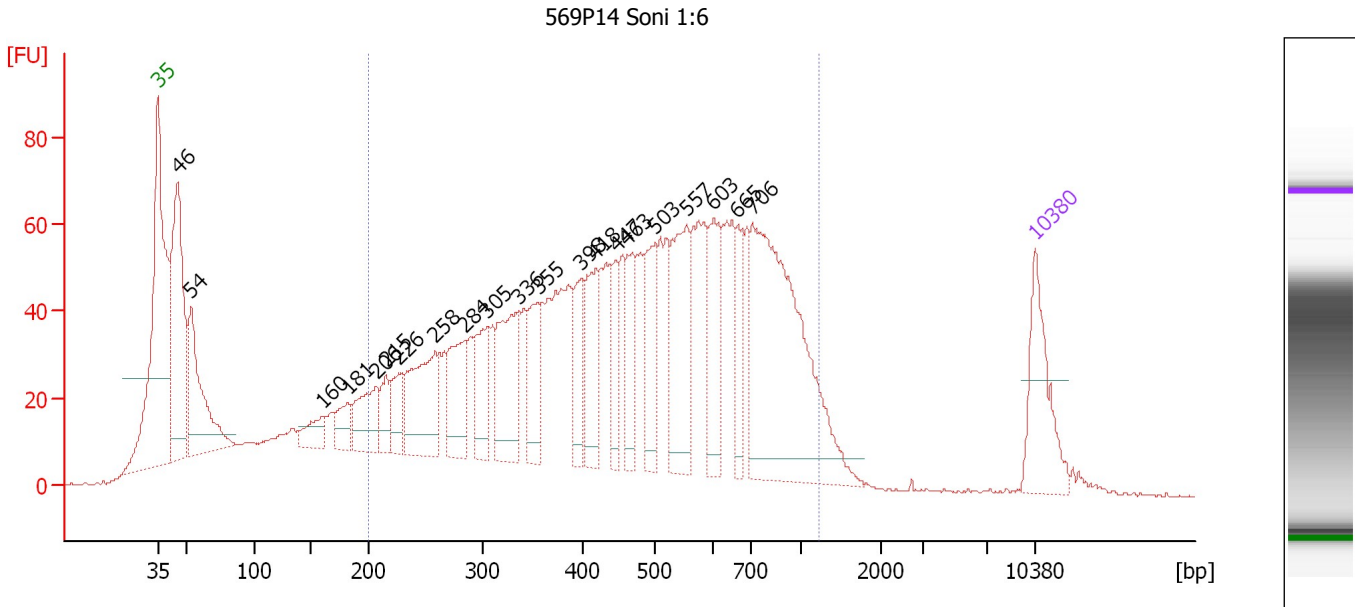
... Region table for sample 6 : 1062E24 Soni 1:6

From [bp]	To [bp]	Average Size [bp]	Molarity [pmol/l]	Conc. [pg/μl]	Corr. Area	% of Total	Size distribution in CV [%]	Color
200	1,113	481	31,180.2	7,917.50	2,560.7	80	39.8	■

Assay Class: High Sensitivity DNA Assay  
 Data Path: C:\...ents and Settings\Bioanalyzer\2012-07-26\2012-07-26\_004.xad

Created: 7/26/2012 2:58:42 PM  
 Modified: 7/26/2012 4:22:48 PM

**Electropherogram Summary Continued ...**



**Overall Results for sample 7 : 569P14 Soni 1:6**

Number of peaks found: 21                      Corr. Area 1: 2,097.9  
 Noise: 0.2

**Peak table for sample 7 : 569P14 Soni 1:6**

Peak	Size [bp]	Conc. [pg/μl]	Molarity [pmol/l]	Observations
1	35	125.00	5,411.3	Lower Marker
2	46	297.87	9,900.3	
3	54	178.17	5,000.1	
4	160	36.05	342.3	
5	181	37.76	315.7	
6	206	75.15	552.1	
7	215	35.47	250.5	
8	226	46.62	312.3	
9	258	137.79	808.2	
10	284	84.24	448.8	
11	305	72.88	361.6	
12	336	119.14	537.7	
13	355	66.65	284.1	
14	398	59.77	227.5	
15	418	79.95	290.0	
16	447	53.05	179.9	
17	463	62.21	203.7	
18	503	74.51	224.3	
19	557	127.66	347.4	
20	603	84.38	212.1	
21	665	49.68	113.1	
22	706	376.59	808.7	
23	10,380	75.00	10.9	Upper Marker

Assay Class: High Sensitivity DNA Assay  
Data Path: C:\...ents and Settings\Bioanalyzer\2012-07-26\2012-07-26\_004.xad

Created: 7/26/2012 2:58:42 PM  
Modified: 7/26/2012 4:22:48 PM

**Electropherogram Summary Continued ...**

... Region table for sample 7 : 569P14 Soni 1:6

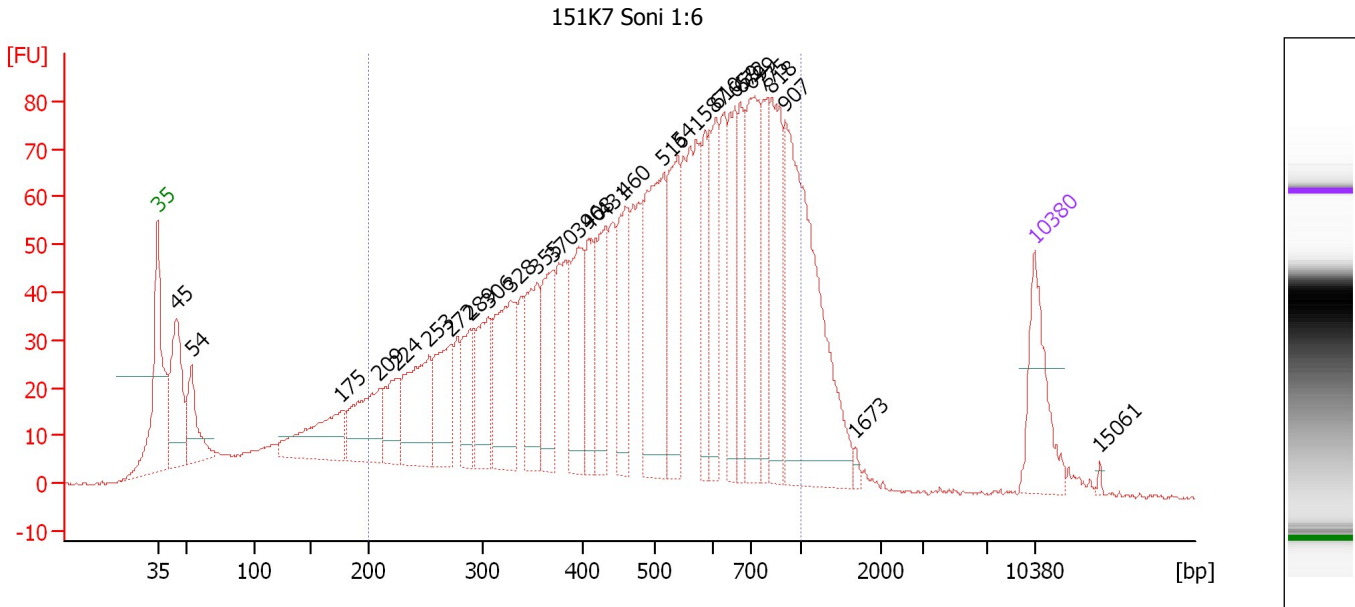
From [bp]	To [bp]	Average Size [bp]	Molarity [pmol/l]	Conc. [pg/μl]	Corr. Area	% of Total	Size distribution in CV [%]	Color
200	1,232	508	10,144.8	2,665.02	2,097.9	75	41.9	■



Assay Class: High Sensitivity DNA Assay  
 Data Path: C:\...ents and Settings\Bioanalyzer\2012-07-26\2012-07-26\_004.xad

Created: 7/26/2012 2:58:42 PM  
 Modified: 7/26/2012 4:22:48 PM

**Electropherogram Summary Continued ...**



**Overall Results for sample 8 : 151K7 Soni 1:6**

Number of peaks found: 28                      Corr. Area 1: 2,251.6  
 Noise: 0.2

**Peak table for sample 8 : 151K7 Soni 1:6**

Peak	Size [bp]	Conc. [pg/μl]	Molarity [pmol/l]	Observations
1	35	125.00	5,411.3	Lower Marker
2	45	165.59	5,576.8	
3	54	90.67	2,537.0	
4	175	121.25	1,048.6	
5	209	118.76	862.6	
6	224	70.66	477.5	
7	253	144.48	866.4	
8	272	102.42	570.2	
9	289	67.82	355.0	
10	306	100.18	496.6	
11	328	152.44	704.1	
12	355	107.52	459.1	
13	370	99.43	407.5	
14	396	109.57	419.4	
15	408	80.31	298.0	
16	431	87.22	306.3	
17	460	107.83	355.2	
18	516	205.87	604.1	
19	541	117.76	329.8	
20	587	74.56	192.3	
21	610	93.36	231.8	
22	659	91.25	209.8	
23	672	80.31	181.1	
24	699	152.07	329.5	
25	775	79.09	154.5	
26	818	133.64	247.6	

Assay Class: High Sensitivity DNA Assay  
Data Path: C:\...ents and Settings\Bioanalyzer\2012-07-26\2012-07-26\_004.xad

Created: 7/26/2012 2:58:42 PM  
Modified: 7/26/2012 4:22:48 PM

**Electropherogram Summary Continued ...****... Peak table for sample 8 : 151K7 Soni 1:6**

Peak	Size [bp]	Conc. [pg/μl]	Molarity [pmol/l]	Observations
27	907	324.22	541.9	
28	1,673	4.89	4.4	
29	10,380	75.00	10.9	Upper Marker
30	15,061	0.00	0.0	

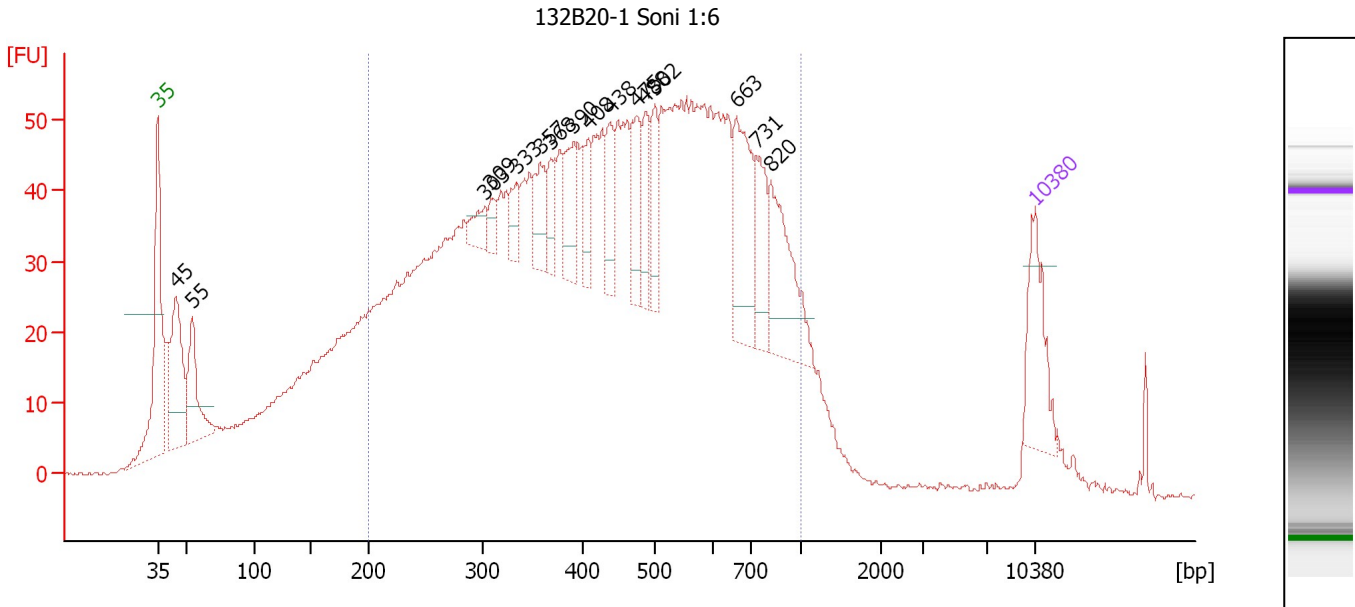
**Region table for sample 8 : 151K7 Soni 1:6**

From [bp]	To [bp]	Average Size [bp]	Molarity [pmol/l]	Conc. [pg/μl]	Corr. Area	% of Total	Size distribution in CV [%]	Color
200	1,000	519	12,352.0	3,382.32	2,251.6	79	37.6	

Assay Class: High Sensitivity DNA Assay  
 Data Path: C:\...ents and Settings\Bioanalyzer\2012-07-26\2012-07-26\_004.xad

Created: 7/26/2012 2:58:42 PM  
 Modified: 7/26/2012 4:22:48 PM

**Electropherogram Summary Continued ...**



**Overall Results for sample 9 : 132B20-1 Soni 1:6**

Number of peaks found: 16                      Corr. Area 1: 1,933.1  
 Noise: 0.2

**Peak table for sample 9 : 132B20-1 Soni 1:6**

Peak	Size [bp]	Conc. [pg/μl]	Molarity [pmol/l]	Observations
1	35	125.00	5,411.3	Lower Marker
2	45	180.96	6,132.2	
3	55	111.72	3,091.1	
4	303	26.94	134.9	
5	309	21.21	104.1	
6	333	28.86	131.2	
7	357	51.98	220.6	
8	368	34.88	143.8	
9	390	63.50	246.6	
10	408	44.64	165.7	
11	438	51.07	176.7	
12	475	58.54	186.5	
13	488	51.68	160.5	
14	502	57.32	173.1	
15	663	133.51	305.3	
16	731	67.53	140.0	
17	820	120.45	222.5	
18	10,380	75.00	10.9	Upper Marker

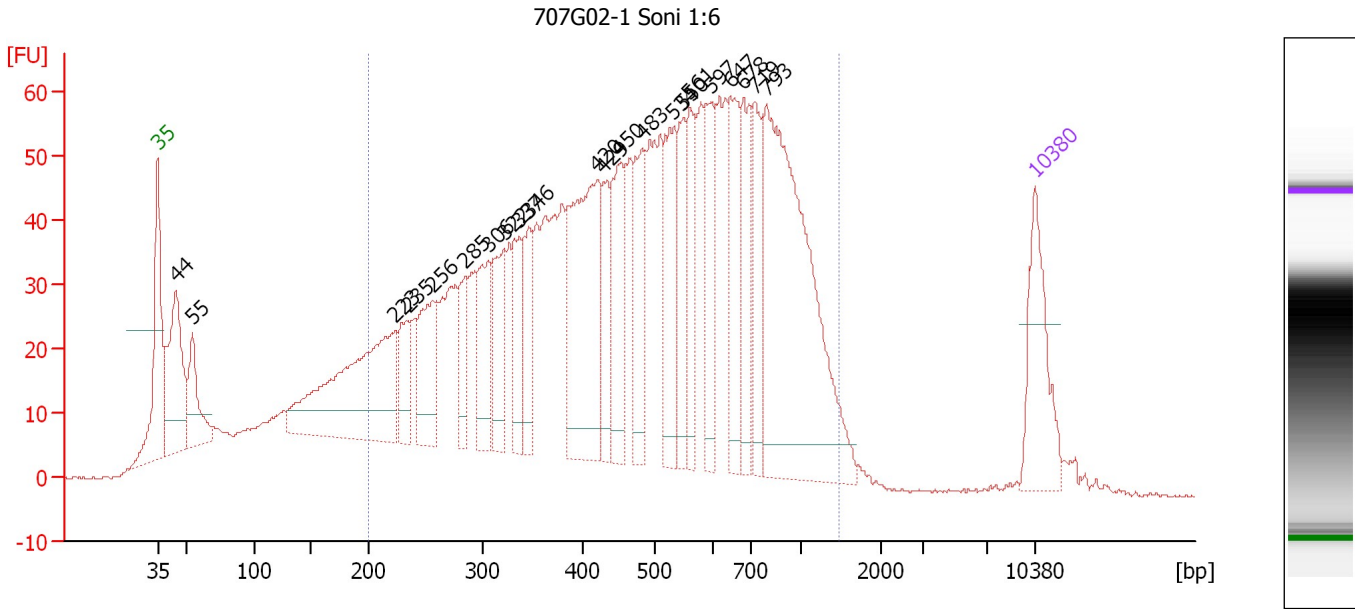
**Region table for sample 9 : 132B20-1 Soni 1:6**

From [bp]	To [bp]	Average Size [bp]	Molarity [pmol/l]	Conc. [pg/μl]	Corr. Area	% of Total	Size distribution in CV [%]	Color
200	1,000	468	19,075.3	4,767.82	1,933.1	78	38.4	Blue

Assay Class: High Sensitivity DNA Assay  
 Data Path: C:\...ents and Settings\Bioanalyzer\2012-07-26\2012-07-26\_004.xad

Created: 7/26/2012 2:58:42 PM  
 Modified: 7/26/2012 4:22:48 PM

**Electropherogram Summary Continued ...**



**Overall Results for sample 10 : 707G02-1 Soni 1:6**

Number of peaks found: 22                      Corr. Area 1: 2,016.7  
 Noise: 0.2

**Peak table for sample 10 : 707G02-1 Soni 1:6**

Peak	Size [bp]	Conc. [pg/μl]	Molarity [pmol/l]	Observations
1	35	125.00	5,411.3	Lower Marker
2	44	170.90	5,820.9	
3	55	78.52	2,160.6	
4	223	274.95	1,869.6	
5	235	50.09	323.3	
6	256	94.59	560.5	
7	285	48.47	257.5	
8	306	82.88	409.9	
9	322	77.93	367.3	
10	337	58.31	262.4	
11	346	63.26	276.9	
12	420	226.11	815.8	
13	429	60.29	212.9	
14	450	102.53	345.3	
15	483	87.37	273.8	
16	534	102.42	290.8	
17	550	65.96	181.7	
18	561	61.83	167.0	
19	597	74.49	188.9	
20	647	90.00	210.8	
21	678	80.01	178.7	
22	719	73.77	155.5	
23	793	376.36	718.8	
24	10,380	75.00	10.9	Upper Marker

Assay Class: High Sensitivity DNA Assay  
Data Path: C:\...ents and Settings\Bioanalyzer\2012-07-26\2012-07-26\_004.xad

Created: 7/26/2012 2:58:42 PM  
Modified: 7/26/2012 4:22:48 PM

**Electropherogram Summary Continued ...**

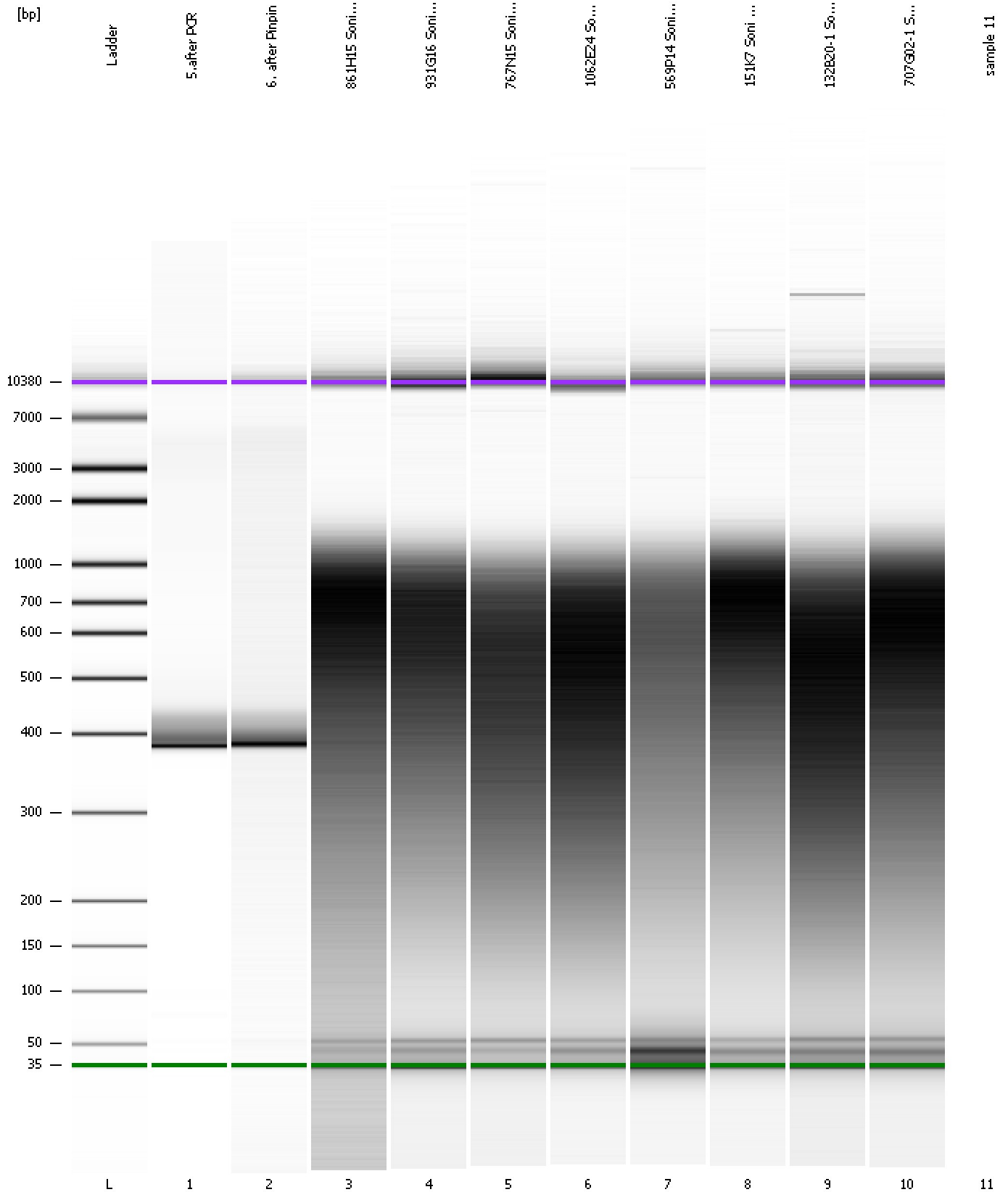
... Region table for sample 10 : 707G02-1 Soni 1:6

From [bp]	To [bp]	Average Size [bp]	Molarity [pmol/l]	Conc. [pg/μl]	Corr. Area	% of Total	Size distribution in CV [%]	Color
200	1,491	534	11,624.5	3,116.83	2,016.7	81	46.3	■

Assay Class: High Sensitivity DNA Assay  
Data Path: C:\...ents and Settings\Bioanalyzer\2012-07-26\2012-07-26\_004.xad

Created: 7/26/2012 2:58:42 PM  
Modified: 7/26/2012 4:22:48 PM

**Gel Image**



---

Assay Class: High Sensitivity DNA Assay  
Data Path: C:\...ents and Settings\Bioanalyzer\2012-07-26\2012-07-26\_004.xad

Created: 7/26/2012 2:58:42 PM  
Modified: 7/26/2012 4:22:48 PM

**Invalid Samples**

Sample 11 has not been run, no results available.