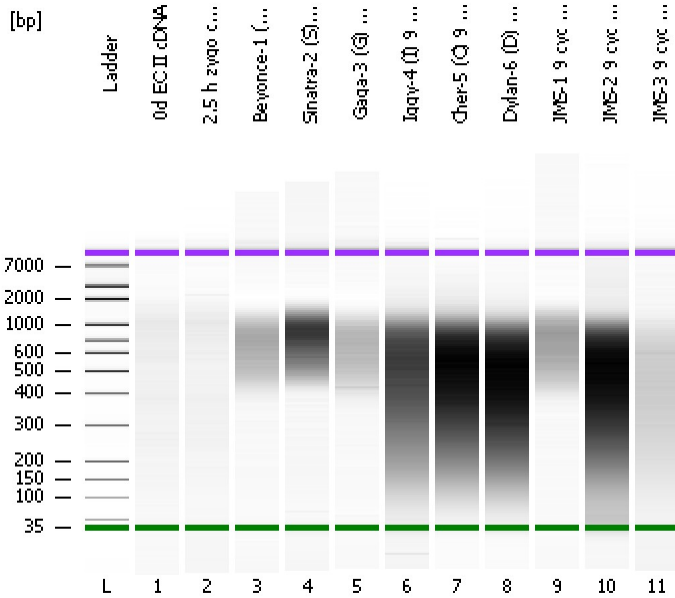


Assay Class: High Sensitivity DNA Assay
Data Path: C:\...ents and Settings\Bioanalyzer\2012-07-27\2012-07-27_001.xad

Created: 7/27/2012 10:16:21 AM
Modified: 7/27/2012 11:00:15 AM

Electrophoresis File Run Summary



Instrument Information:

Instrument Name: DE13701086 Firmware: C.01.069
Serial#: DE13701086 Type: G2938B

Assay Information:

Assay Origin Path: C:\Program Files\Agilent\2100 bioanalyzer\2100 expert\assays\dsDNA\High Sensitivity DNA.xsy
Assay Class: High Sensitivity DNA Assay
Version: 1.03
Assay Comments: Copyright © 2003-2010 Agilent Technologies

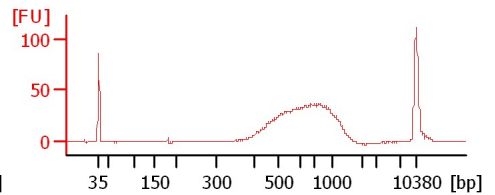
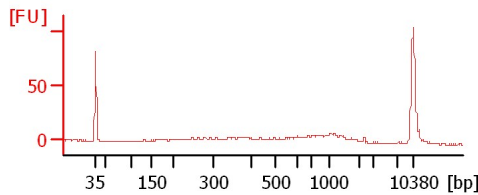
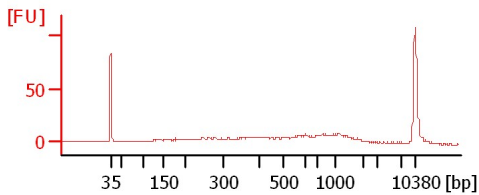
Chip Information:

Chip Lot #:
Reagent Kit Lot #:
Chip Comments:

0d EC II cDNA

2.5 h zygo cDNA

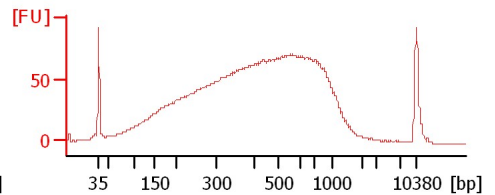
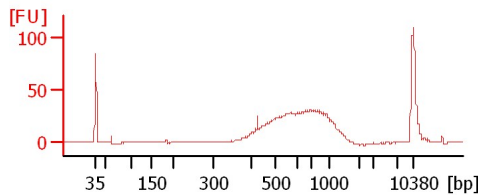
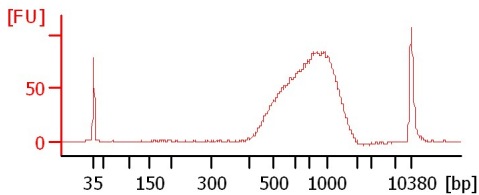
Beyonce-1 (B) 9 cyc soni



Sinatra-2 (S) 9 cyc soni

Gaga-3 (G) 9 cyc soni

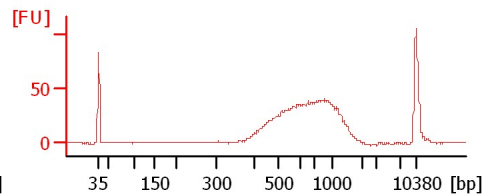
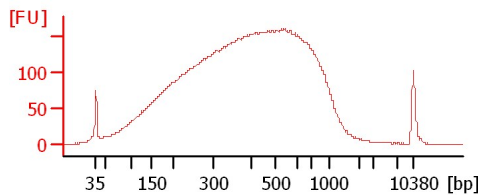
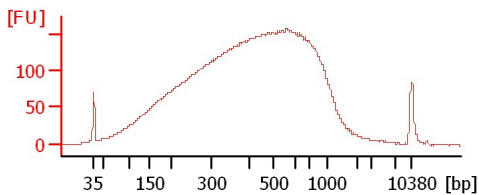
Iggy-4 (I) 9 cyc soni



Cher-5 (C) 9 cyc soni

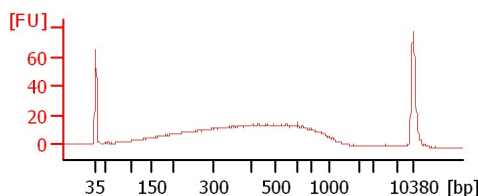
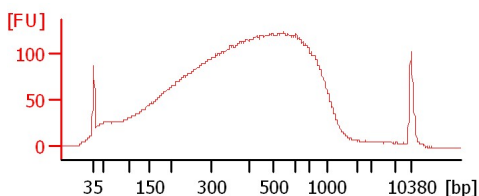
Dylan-6 (D) 9 cyc soni

JMS-1 9 cyc soni



JMS-2 9 cyc soni

JMS-3 9 cyc soni



Assay Class: High Sensitivity DNA Assay
Data Path: C:\...ents and Settings\Bioanalyzer\2012-07-27\2012-07-27_001.xad

Created: 7/27/2012 10:16:21 AM
Modified: 7/27/2012 11:00:15 AM

Electrophoresis File Run Summary (Chip Summary)

Sample Name	Sample Comment	Rest. Digest	Status	Observation	Result Label	Result Color
0d EC II cDNA		<input type="checkbox"/>	✓			
2.5 h zygo cDNA		<input type="checkbox"/>	✓			
Beyonce-1 (B) 9 cyc soni		<input type="checkbox"/>	✓			
Sinatra-2 (S) 9 cyc soni		<input type="checkbox"/>	✓			
Gaga-3 (G) 9 cyc soni		<input type="checkbox"/>	✓			
Iggy-4 (I) 9 cyc soni		<input type="checkbox"/>	✓			
Cher-5 (C) 9 cyc soni		<input type="checkbox"/>	✓			
Dylan-6 (D) 9 cyc soni		<input type="checkbox"/>	✓			
JMS-1 9 cyc soni		<input type="checkbox"/>	✓			
JMS-2 9 cyc soni		<input type="checkbox"/>	✓			
JMS-3 9 cyc soni		<input type="checkbox"/>	✓			
Ladder		<input type="checkbox"/>	✓			

Chip Lot #

Reagent Kit Lot #

Chip Comments :

Assay Class: High Sensitivity DNA Assay
Data Path: C:\...ents and Settings\Bioanalyzer\2012-07-27\2012-07-27_001.xad

Created: 7/27/2012 10:16:21 AM
Modified: 7/27/2012 11:00:15 AM

Electrophoresis Assay Details

General Analysis Settings

Number of Available Sample and Ladder Wells (Max.) : 12
Minimum Visible Range [s] : 32
Maximum Visible Range [s] : 138
Start Analysis Time Range [s] : 33
End Analysis Time Range [s] : 137.5
Ladder Concentration [pg/μl] : 1950
Uses Standard Area for Ladder Fragments
Lower Marker Concentration [pg/μl] : 125
Upper Marker Concentration [pg/μl] : 75
Used Upper Marker for Quantitation
Standard Curve Fit is Point to Point
Show Data Aligned to Lower and Upper Marker

Integrator Settings

Integration Start Time [s] : 33.05
Integration End Time [s] : 137
Slope Threshold : 0.8
Height Threshold [FU] : 5
Area Threshold : 0.1
Width Threshold [s] : 0.6
Baseline Plateau [s] : 0.5

Filter Settings

Filter Width [s] : 0.5
Polynomial Order : 4

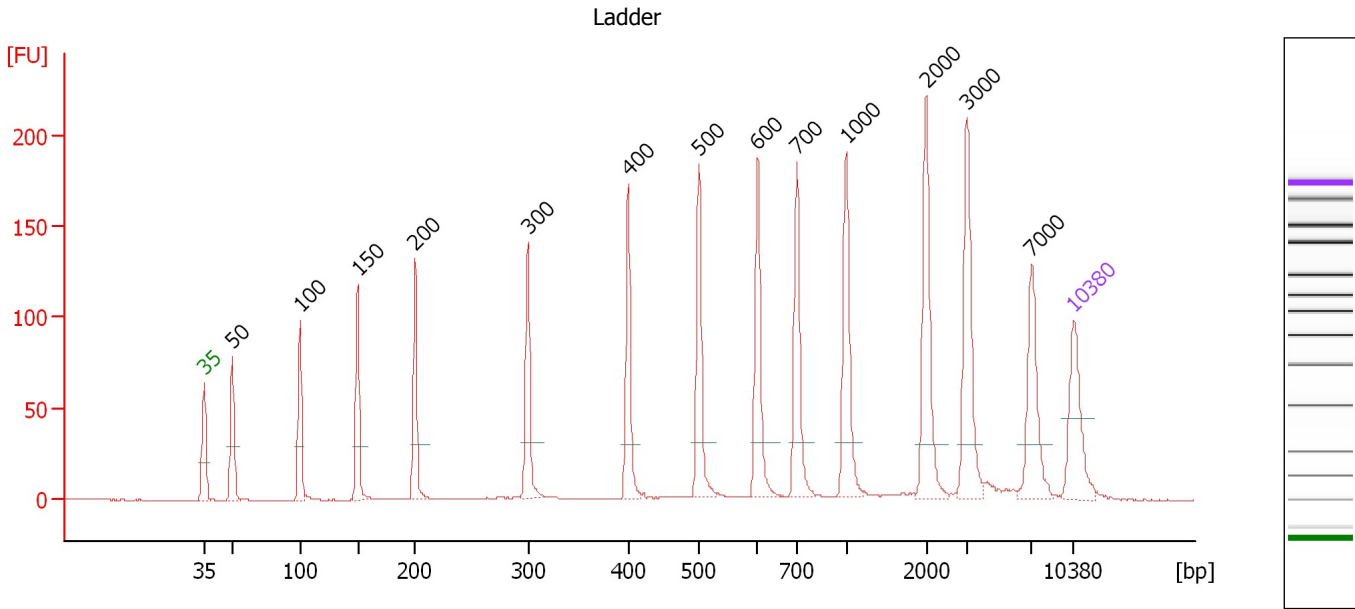
Ladder

Ladder Peak	Size	Area
1	35	160
2	50	210
3	100	208
4	150	221
5	200	242
6	300	270
7	400	305
8	500	306
9	600	336
10	700	321
11	1000	366
12	2000	413
13	3000	411
14	7000	400
15	10380	214

Assay Class: High Sensitivity DNA Assay
 Data Path: C:\...ents and Settings\Bioanalyzer\2012-07-27\2012-07-27_001.xad

Created: 7/27/2012 10:16:21 AM
 Modified: 7/27/2012 11:00:15 AM

Electropherogram Summary



Overall Results for Ladder

Noise: 0.1

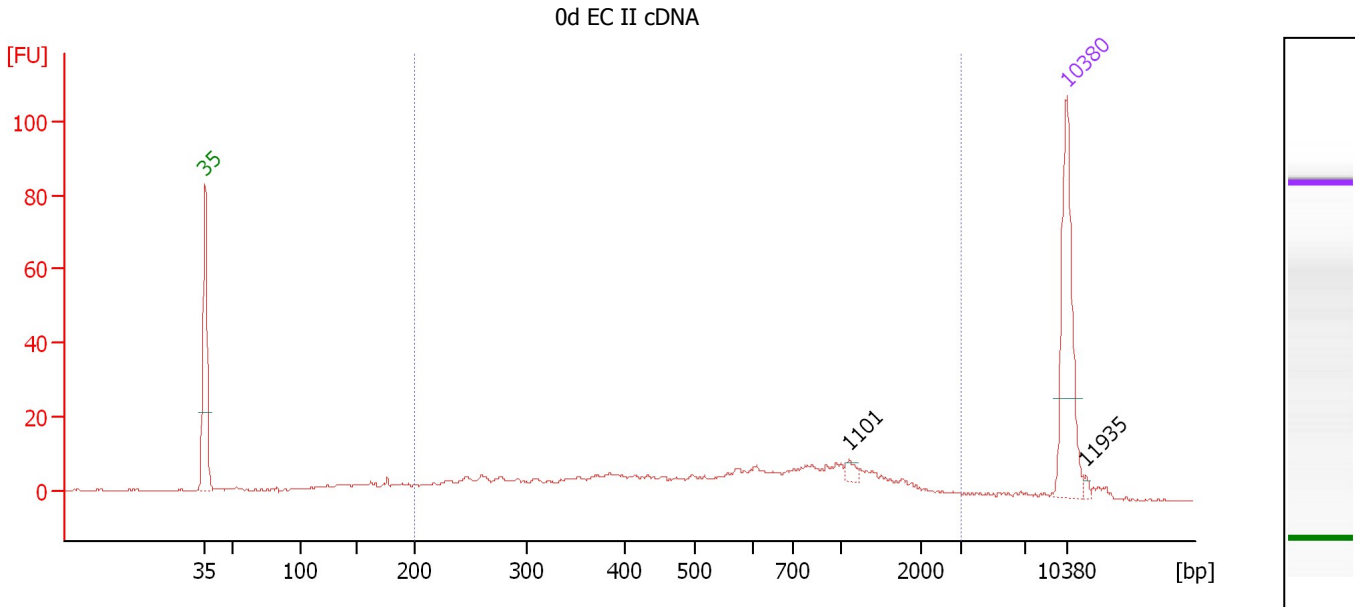
Peak table for Ladder

Peak	Size [bp]	Conc. [pg/μl]	Molarity [pmol/l]	Observations
1	35	125.00	5,411.3	Lower Marker
2	50	150.00	4,545.5	Ladder Peak
3	100	150.00	2,272.7	Ladder Peak
4	150	150.00	1,515.2	Ladder Peak
5	200	150.00	1,136.4	Ladder Peak
6	300	150.00	757.6	Ladder Peak
7	400	150.00	568.2	Ladder Peak
8	500	150.00	454.5	Ladder Peak
9	600	150.00	378.8	Ladder Peak
10	700	150.00	324.7	Ladder Peak
11	1,000	150.00	227.3	Ladder Peak
12	2,000	150.00	113.6	Ladder Peak
13	3,000	150.00	75.8	Ladder Peak
14	7,000	150.00	32.5	Ladder Peak
15	10,380	75.00	10.9	Upper Marker

Assay Class: High Sensitivity DNA Assay
 Data Path: C:\...ents and Settings\Bioanalyzer\2012-07-27\2012-07-27_001.xad

Created: 7/27/2012 10:16:21 AM
 Modified: 7/27/2012 11:00:15 AM

Electropherogram Summary Continued ...



Overall Results for sample 1 : 0d EC II cDNA

Number of peaks found: 2 Corr. Area 1: 282.4
 Noise: 0.2

Peak table for sample 1 : 0d EC II cDNA

Peak	Size [bp]	Conc. [pg/μl]	Molarity [pmol/l]	Observations
1	35	125.00	5,411.3	Lower Marker
2	1,101	5.07	7.0	
3	10,380	75.00	10.9	Upper Marker
4	11,935	0.00	0.0	

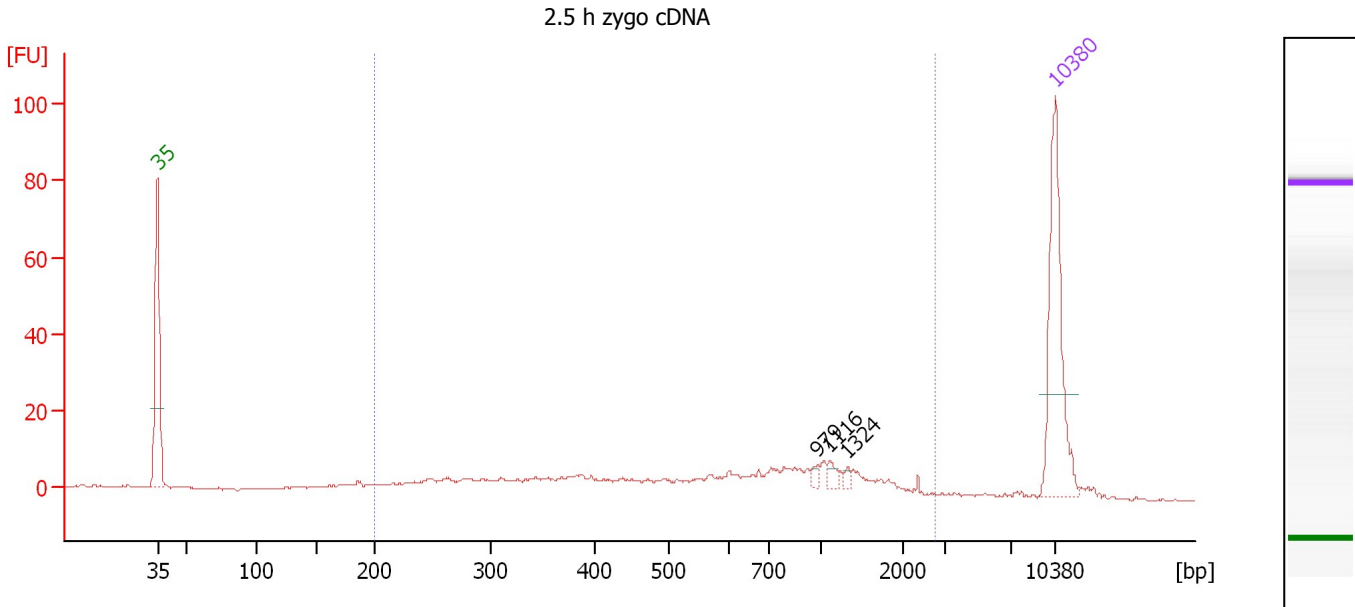
Region table for sample 1 : 0d EC II cDNA

From [bp]	To [bp]	Average Size [bp]	Molarity [pmol/l]	Conc. [pg/μl]	Corr. Area	% of Total	Size distribution in CV [%]	Color
200	3,024	721	1,022.7	296.44	282.4	81	69.5	Blue

Assay Class: High Sensitivity DNA Assay
 Data Path: C:\...ents and Settings\Bioanalyzer\2012-07-27\2012-07-27_001.xad

Created: 7/27/2012 10:16:21 AM
 Modified: 7/27/2012 11:00:15 AM

Electropherogram Summary Continued ...



Overall Results for sample 2 : 2.5 h zygo cDNA

Number of peaks found: 3 Corr. Area 1: 223.5
 Noise: 0.2

Peak table for sample 2 : 2.5 h zygo cDNA

Peak	Size [bp]	Conc. [pg/μl]	Molarity [pmol/l]	Observations
1	35	125.00	5,411.3	Lower Marker
2	979	2.97	4.6	
3	1,116	4.78	6.5	
4	1,324	2.49	2.8	
5	10,380	75.00	10.9	Upper Marker

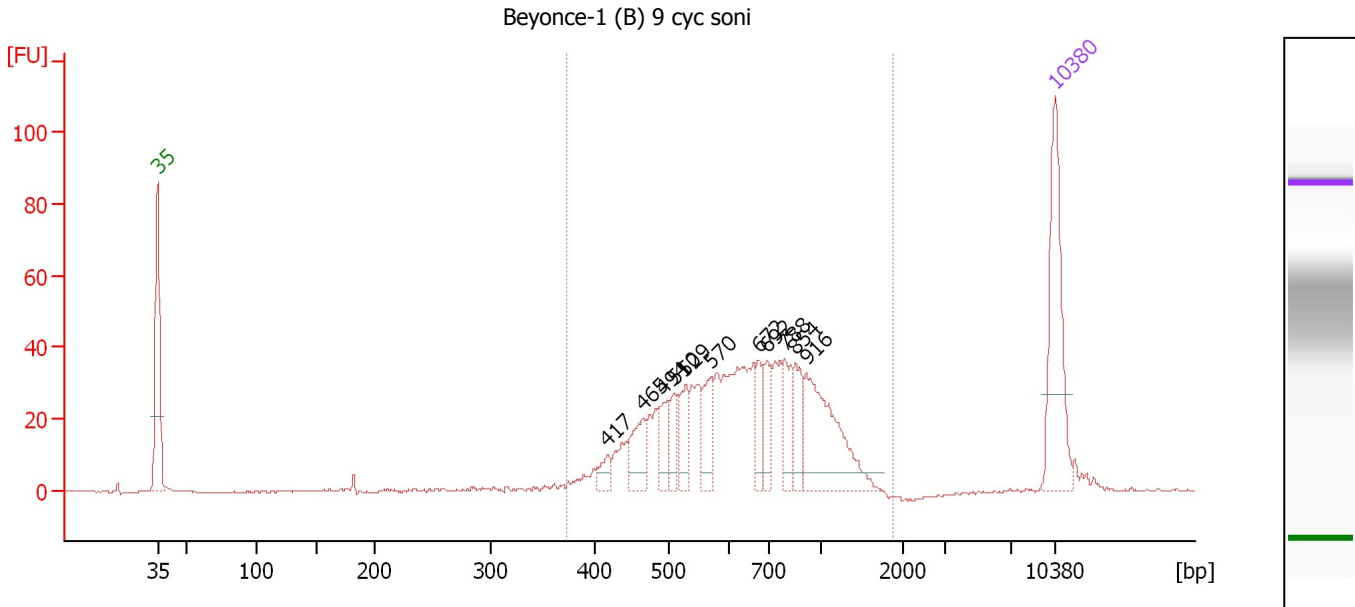
Region table for sample 2 : 2.5 h zygo cDNA

From [bp]	To [bp]	Average Size [bp]	Molarity [pmol/l]	Conc. [pg/μl]	Corr. Area	% of Total	Size distribution in CV [%]	Color
200	2,772	743	742.7	221.11	223.5	87	66.2	Blue

Assay Class: High Sensitivity DNA Assay
 Data Path: C:\...ents and Settings\Bioanalyzer\2012-07-27\2012-07-27_001.xad

Created: 7/27/2012 10:16:21 AM
 Modified: 7/27/2012 11:00:15 AM

Electropherogram Summary Continued ...



Overall Results for sample 3 : Beyonce-1 (B) 9 cyc soni

Number of peaks found: 11 Corr. Area 1: 625.0
 Noise: 0.2

Peak table for sample 3 : Beyonce-1 (B) 9 cyc soni

Peak	Size [bp]	Conc. [pg/µl]	Molarity [pmol/l]	Observations
1	35	125.00	5,411.3	Lower Marker
2	417	12.03	43.7	
3	465	30.46	99.3	
4	494	23.81	73.1	
5	510	20.85	62.0	
6	529	25.94	74.3	
7	570	29.54	78.5	
8	672	22.85	51.5	
9	692	22.81	49.9	
10	788	24.84	47.8	
11	854	30.53	54.2	
12	916	92.09	152.4	
13	10,380	75.00	10.9	Upper Marker

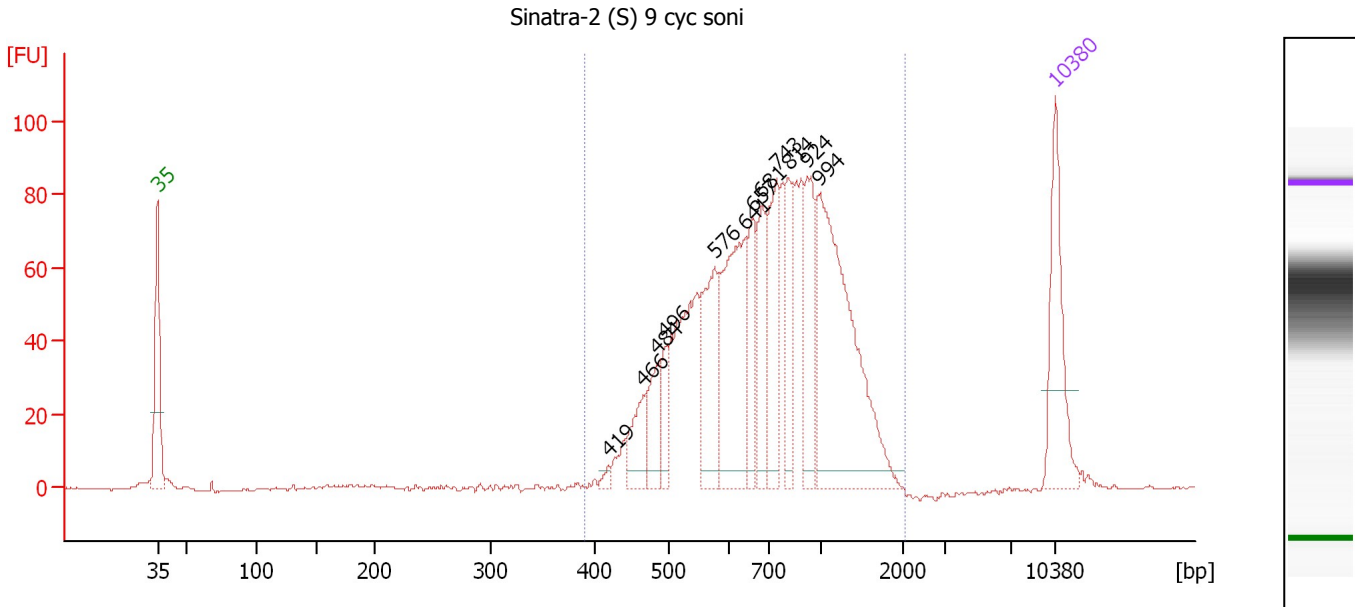
Region table for sample 3 : Beyonce-1 (B) 9 cyc soni

From [bp]	To [bp]	Average Size [bp]	Molarity [pmol/l]	Conc. [pg/µl]	Corr. Area	% of Total	Size distribution in CV [%]	Color
372	1,877	698	1,426.1	582.68	625.0	97	34.0	Blue

Assay Class: High Sensitivity DNA Assay
 Data Path: C:\...ents and Settings\Bioanalyzer\2012-07-27\2012-07-27_001.xad

Created: 7/27/2012 10:16:21 AM
 Modified: 7/27/2012 11:00:15 AM

Electropherogram Summary Continued ...



Overall Results for sample 4 : Sinatra-2 (S) 9 cyc soni

Number of peaks found: 12 Corr. Area 1: 1,286.4
 Noise: 0.2

Peak table for sample 4 : Sinatra-2 (S) 9 cyc soni

Peak	Size [bp]	Conc. [pg/µl]	Molarity [pmol/l]	Observations
1	35	125.00	5,411.3	Lower Marker
2	419	6.26	22.6	
3	466	44.13	143.6	
4	484	42.83	134.2	
5	496	32.73	100.0	
6	576	90.08	236.9	
7	641	159.83	377.7	
8	657	53.32	122.9	
9	681	67.93	151.2	
10	743	87.53	178.6	
11	814	58.69	109.3	
12	924	77.81	127.7	
13	994	249.80	380.6	
14	10,380	75.00	10.9	Upper Marker

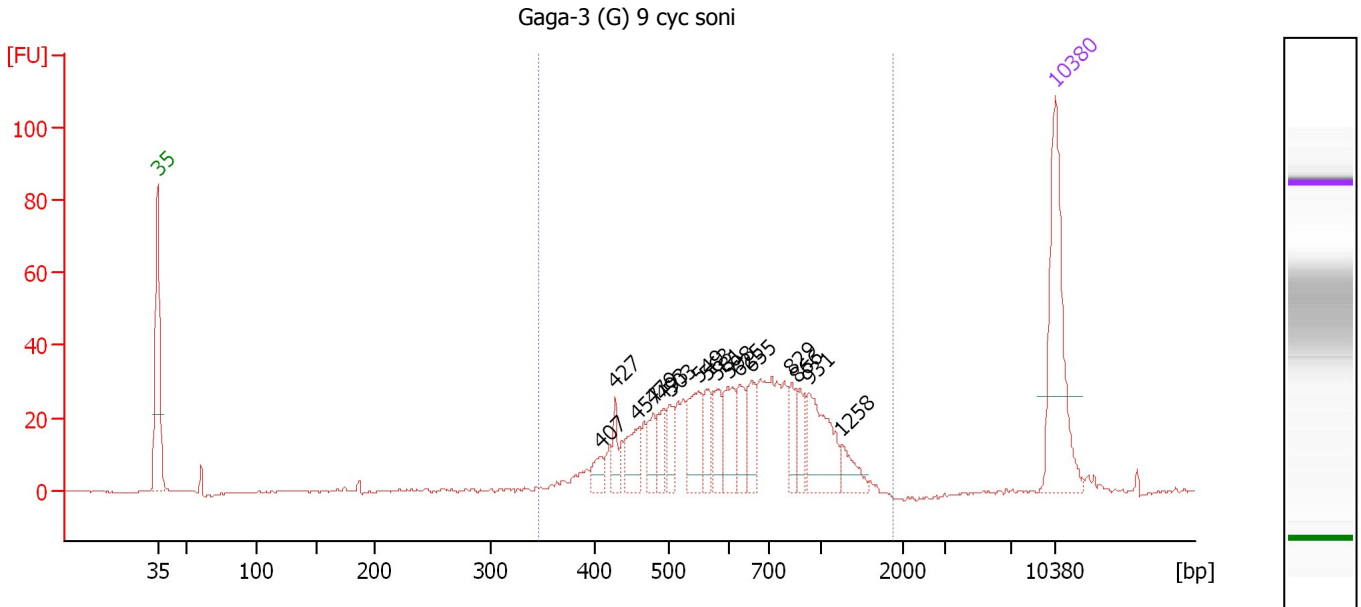
Region table for sample 4 : Sinatra-2 (S) 9 cyc soni

From [bp]	To [bp]	Average Size [bp]	Molarity [pmol/l]	Conc. [pg/µl]	Corr. Area	% of Total	Size distribution in CV [%]	Color
389	2,062	803	2,698.1	1,236.75	1,286.4	99	37.5	Blue

Assay Class: High Sensitivity DNA Assay
 Data Path: C:\...ents and Settings\Bioanalyzer\2012-07-27\2012-07-27_001.xad

Created: 7/27/2012 10:16:21 AM
 Modified: 7/27/2012 11:00:15 AM

Electropherogram Summary Continued ...



Overall Results for sample 5 : Gaga-3 (G) 9 cyc soni

Number of peaks found: 16 Corr. Area 1: 558.0
 Noise: 0.2

Peak table for sample 5 : Gaga-3 (G) 9 cyc soni

Peak	Size [bp]	Conc. [pg/μl]	Molarity [pmol/l]	Observations
1	35	125.00	5,411.3	Lower Marker
2	407	12.00	44.7	
3	427	13.36	47.4	
4	457	22.51	74.6	
5	479	17.84	56.5	
6	493	16.63	51.1	
7	503	16.35	49.3	
8	549	35.74	98.6	
9	563	18.86	50.7	
10	581	22.30	58.1	
11	598	28.72	72.7	
12	625	22.61	54.8	
13	655	24.86	57.5	
14	829	16.32	29.8	
15	866	15.17	26.6	
16	931	48.08	78.3	
17	1,258	14.24	17.2	
18	10,380	75.00	10.9	Upper Marker

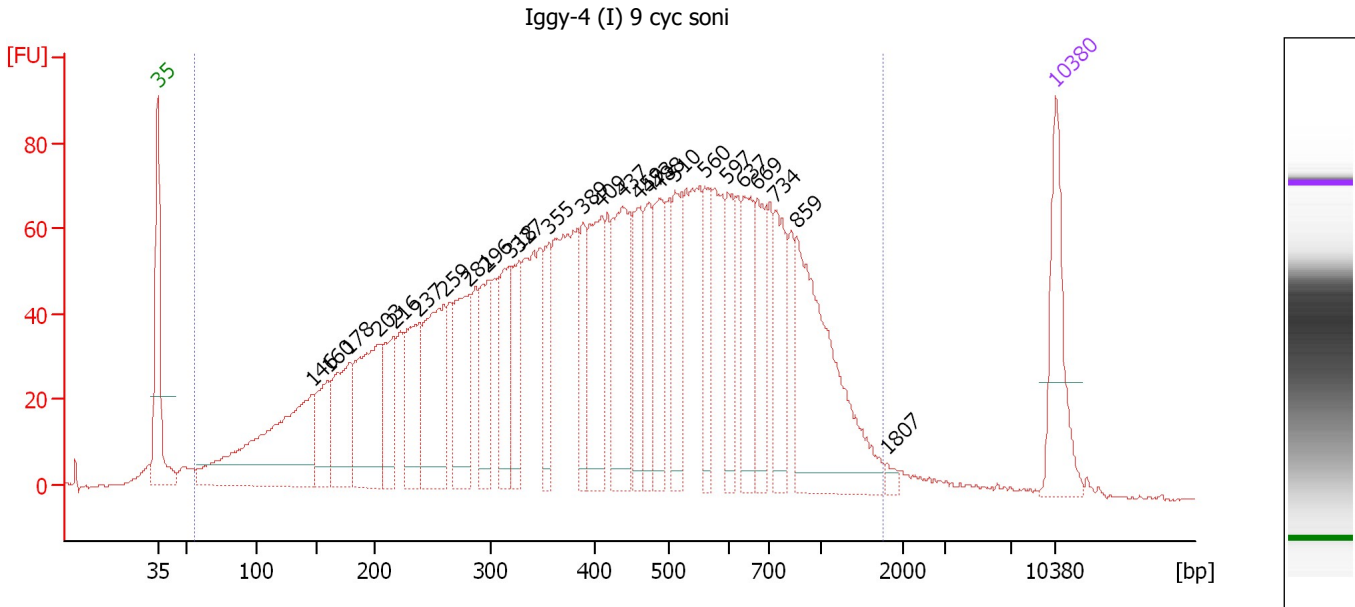
Region table for sample 5 : Gaga-3 (G) 9 cyc soni

From [bp]	To [bp]	Average Size [bp]	Molarity [pmol/l]	Conc. [pg/μl]	Corr. Area	% of Total	Size distribution in CV [%]	Color
346	1,887	679	1,197.1	472.88	558.0	98	34.7	Blue

Assay Class: High Sensitivity DNA Assay
 Data Path: C:\...ents and Settings\Bioanalyzer\2012-07-27\2012-07-27_001.xad

Created: 7/27/2012 10:16:21 AM
 Modified: 7/27/2012 11:00:15 AM

Electropherogram Summary Continued ...



Overall Results for sample 6 : Iggv-4 (I) 9 cyc soni

Number of peaks found: 26 Corr. Area 1: 3,181.2
 Noise: 0.2

Peak table for sample 6 : Iggv-4 (I) 9 cyc soni

Peak	Size [bp]	Conc. [pg/μl]	Molarity [pmol/l]	Observations
1	35	125.00	5,411.3	Lower Marker
2	146	295.55	3,060.2	
3	160	78.44	743.4	
4	178	111.32	947.0	
5	203	170.61	1,272.3	
6	216	77.34	542.6	
7	237	99.25	633.7	
8	259	163.96	958.6	
9	281	121.69	656.1	
10	296	75.74	387.1	
11	318	89.21	425.6	
12	327	72.74	337.5	
13	355	56.21	239.7	
14	389	56.29	219.4	
15	409	123.96	459.6	
16	437	130.05	451.4	
17	459	73.20	241.4	
18	473	60.62	194.2	
19	488	82.47	256.0	
20	510	73.77	219.1	
21	560	57.50	155.5	
22	597	64.69	164.1	
23	637	79.08	188.2	
24	669	70.43	159.6	
25	734	75.38	155.5	
26	859	217.88	384.2	

Assay Class: High Sensitivity DNA Assay
 Data Path: C:\...ents and Settings\Bioanalyzer\2012-07-27\2012-07-27_001.xad

Created: 7/27/2012 10:16:21 AM
 Modified: 7/27/2012 11:00:15 AM

Electropherogram Summary Continued ...

... Peak table for sample 6 : Iggy-4 (I) 9 cyc soni

Peak	Size [bp]	Conc. [pg/μl]	Molarity [pmol/l]	Observations
27	1,807	5.50	4.6	
28	▶ 10,380	75.00	10.9	Upper Marker

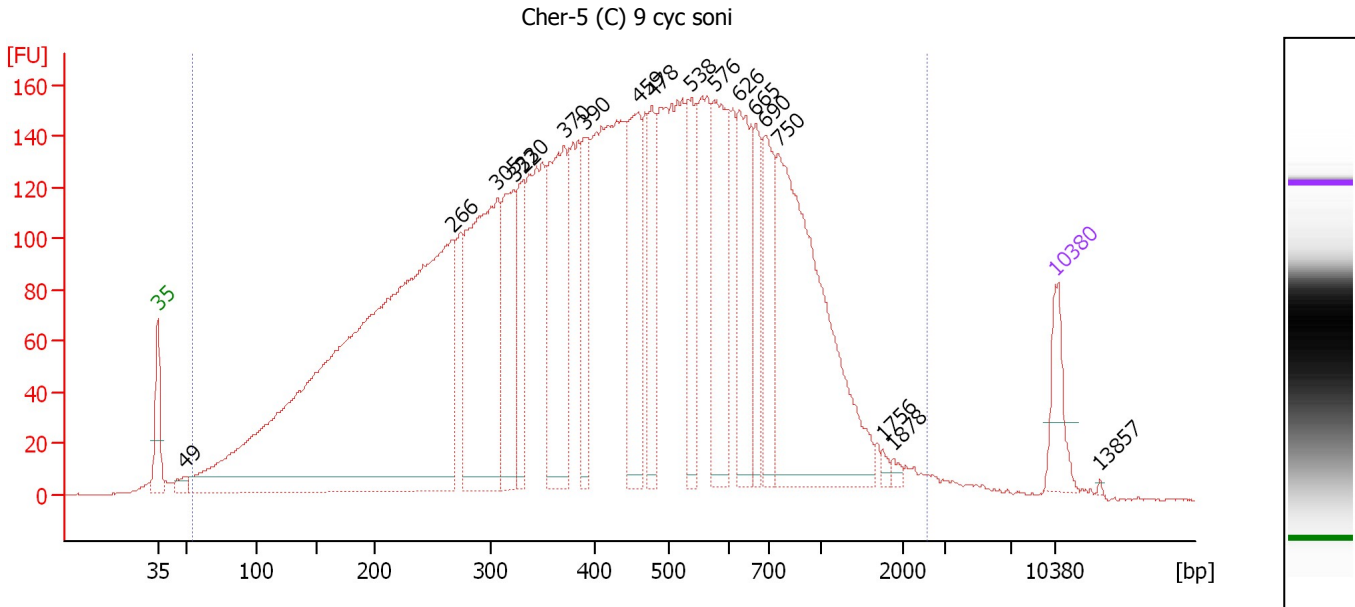
Region table for sample 6 : Iggy-4 (I) 9 cyc soni

From [bp]	To [bp]	Average Size [bp]	Molarity [pmol/l]	Conc. [pg/μl]	Corr. Area	% of Total	Size distribution in CV [%]	Color
56	1,766	477	19,159.5	3,638.79	3,181.2	98	56.1	■

Assay Class: High Sensitivity DNA Assay
 Data Path: C:\...ents and Settings\Bioanalyzer\2012-07-27\2012-07-27_001.xad

Created: 7/27/2012 10:16:21 AM
 Modified: 7/27/2012 11:00:15 AM

Electropherogram Summary Continued ...



Overall Results for sample 7 : Cher-5 (C) 9 cyc soni

Number of peaks found: 18 Corr. Area 1: 6,968.6
 Noise: 0.2

Peak table for sample 7 : Cher-5 (C) 9 cyc soni

Peak	Size [bp]	Conc. [pg/μl]	Molarity [pmol/l]	Observations
1	35	125.00	5,411.3	Lower Marker
2	49	26.62	824.3	
3	266	2,467.09	14,071.5	
4	305	691.40	3,431.6	
5	322	286.84	1,350.9	
6	330	157.13	720.9	
7	370	420.68	1,723.6	
8	390	169.22	657.6	
9	459	287.47	949.2	
10	478	167.75	531.9	
11	538	182.32	513.8	
12	576	319.35	839.8	
13	626	248.63	601.3	
14	665	144.71	329.6	
15	690	186.36	409.3	
16	750	771.25	1,557.7	
17	1,756	8.36	7.2	
18	1,878	9.24	7.5	
19	10,380	75.00	10.9	Upper Marker
20	13,857	0.00	0.0	

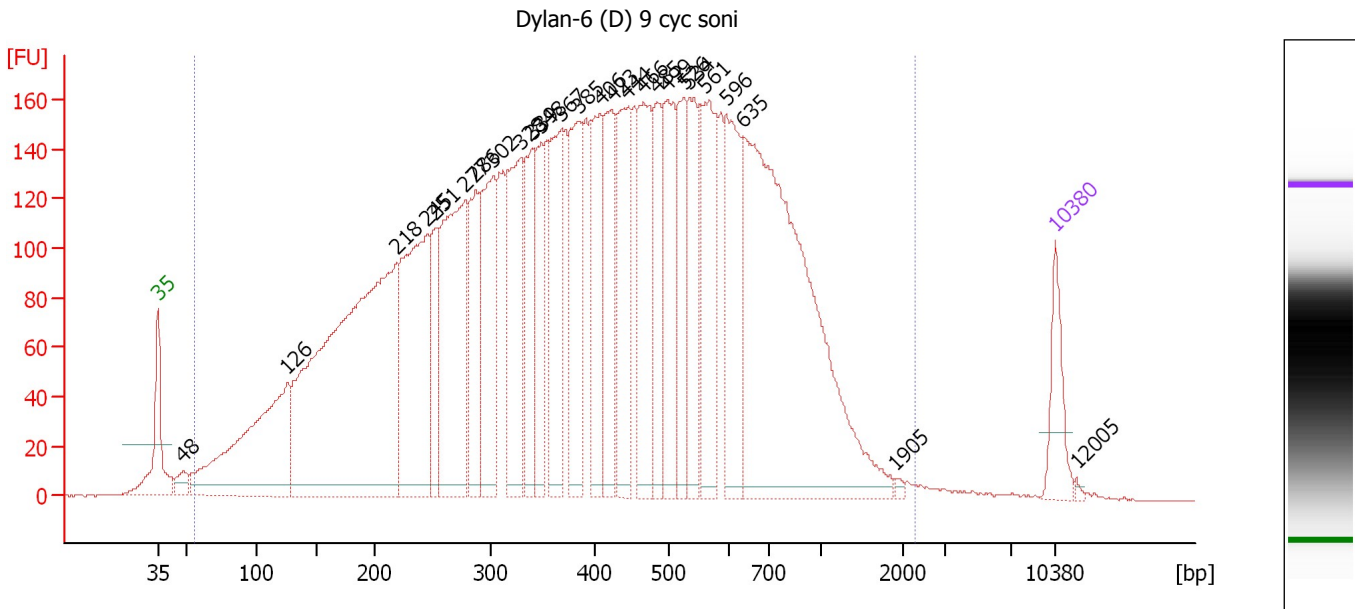
Region table for sample 7 : Cher-5 (C) 9 cyc soni

From [bp]	To [bp]	Average Size [bp]	Molarity [pmol/l]	Conc. [pg/μl]	Corr. Area	% of Total	Size distribution in CV [%]	Color
53	2,579	483	52,087.3	9,945.70	6,968.6	99	61.7	Blue

Assay Class: High Sensitivity DNA Assay
 Data Path: C:\...ents and Settings\Bioanalyzer\2012-07-27\2012-07-27_001.xad

Created: 7/27/2012 10:16:21 AM
 Modified: 7/27/2012 11:00:15 AM

Electropherogram Summary Continued ...



Overall Results for sample 8 : Dylan-6 (D) 9 cyc soni

Number of peaks found: 26 Corr. Area 1: 7,508.4
 Noise: 0.3

Peak table for sample 8 : Dylan-6 (D) 9 cyc soni

Peak	Size [bp]	Conc. [pg/μl]	Molarity [pmol/l]	Observations
1	35	125.00	5,411.3	Lower Marker
2	48	36.36	1,146.9	
3	126	608.63	7,324.1	
4	218	1,393.81	9,688.2	
5	245	534.75	3,311.0	
6	251	161.00	970.9	
7	277	503.91	2,752.0	
8	286	214.80	1,137.3	
9	302	298.15	1,497.7	
10	328	309.05	1,427.9	
11	339	215.38	962.7	
12	348	167.87	731.9	
13	367	224.87	929.6	
14	385	256.83	1,011.1	
15	406	229.50	855.8	
16	423	217.96	781.2	
17	444	272.68	929.7	
18	466	270.66	880.0	
19	485	167.36	522.8	
20	499	243.70	740.1	
21	526	171.34	493.6	
22	534	179.74	509.7	
23	561	249.75	673.9	
24	596	253.06	643.3	
25	635	1,079.61	2,578.0	
26	1,905	5.36	4.3	


Assay Class: High Sensitivity DNA Assay
Data Path: C:\...ents and Settings\Bioanalyzer\2012-07-27\2012-07-27_001.xad

Created: 7/27/2012 10:16:21 AM
Modified: 7/27/2012 11:00:15 AM

Electropherogram Summary Continued ...**... Peak table for sample 8 : Dylan-6 (D) 9 cyc soni**

Peak	Size [bp]	Conc. [pg/ μ l]	Molarity [pmol/l]	Observations
27	10,380	75.00	10.9	Upper Marker
28	12,005	0.00	0.0	

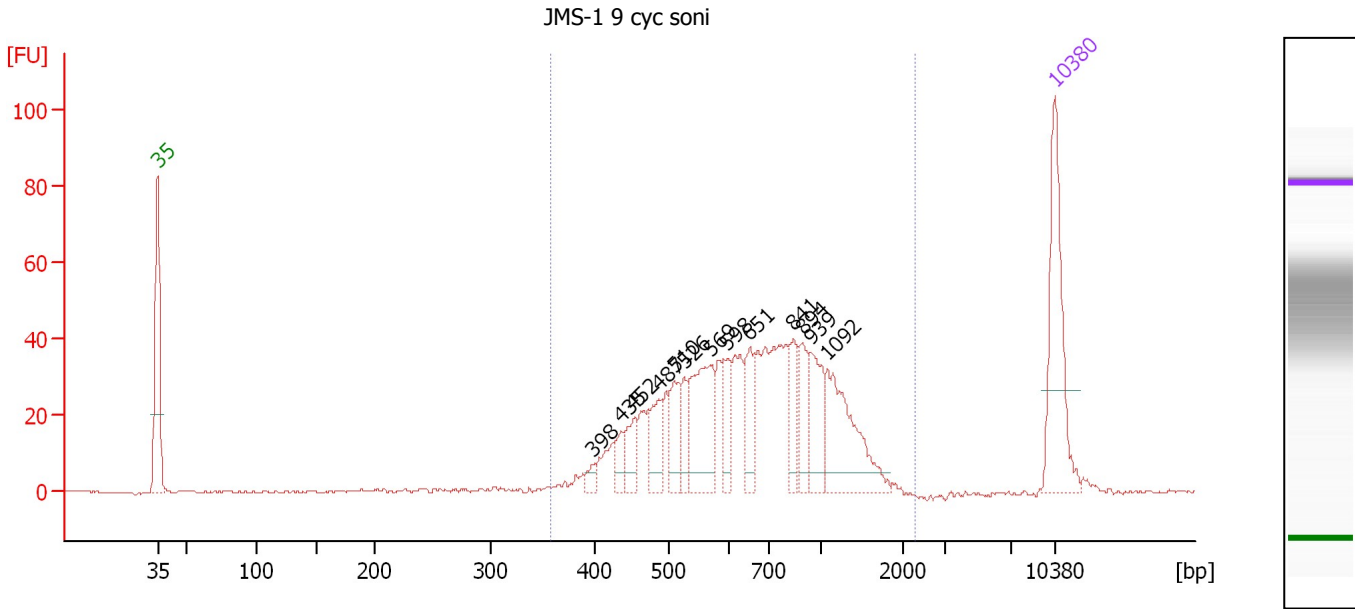
Region table for sample 8 : Dylan-6 (D) 9 cyc soni

From [bp]	To [bp]	Average Size [bp]	Molarity [pmol/l]	Conc. [pg/ μ l]	Corr. Area	% of Total	Size distribution in CV [%]	Color
56	2,268	450	51,536.5	9,394.79	7,508.4	99	57.5	

Assay Class: High Sensitivity DNA Assay
 Data Path: C:\...ents and Settings\Bioanalyzer\2012-07-27\2012-07-27_001.xad

Created: 7/27/2012 10:16:21 AM
 Modified: 7/27/2012 11:00:15 AM

Electropherogram Summary Continued ...



Overall Results for sample 9 : JMS-1 9 cyc soni

Number of peaks found: 13 Corr. Area 1: 691.4
 Noise: 0.3

Peak table for sample 9 : JMS-1 9 cyc soni

Peak	Size [bp]	Conc. [pg/μl]	Molarity [pmol/l]	Observations
1	35	125.00	5,411.3	Lower Marker
2	398	7.68	29.3	
3	435	14.76	51.4	
4	452	22.00	73.7	
5	487	32.13	99.9	
6	510	29.61	88.0	
7	526	22.99	66.3	
8	569	75.53	201.2	
9	598	28.28	71.6	
10	651	31.71	73.9	
11	841	25.56	46.0	
12	894	27.94	47.4	
13	939	42.74	68.9	
14	1,092	76.40	106.0	
15	10,380	75.00	10.9	Upper Marker

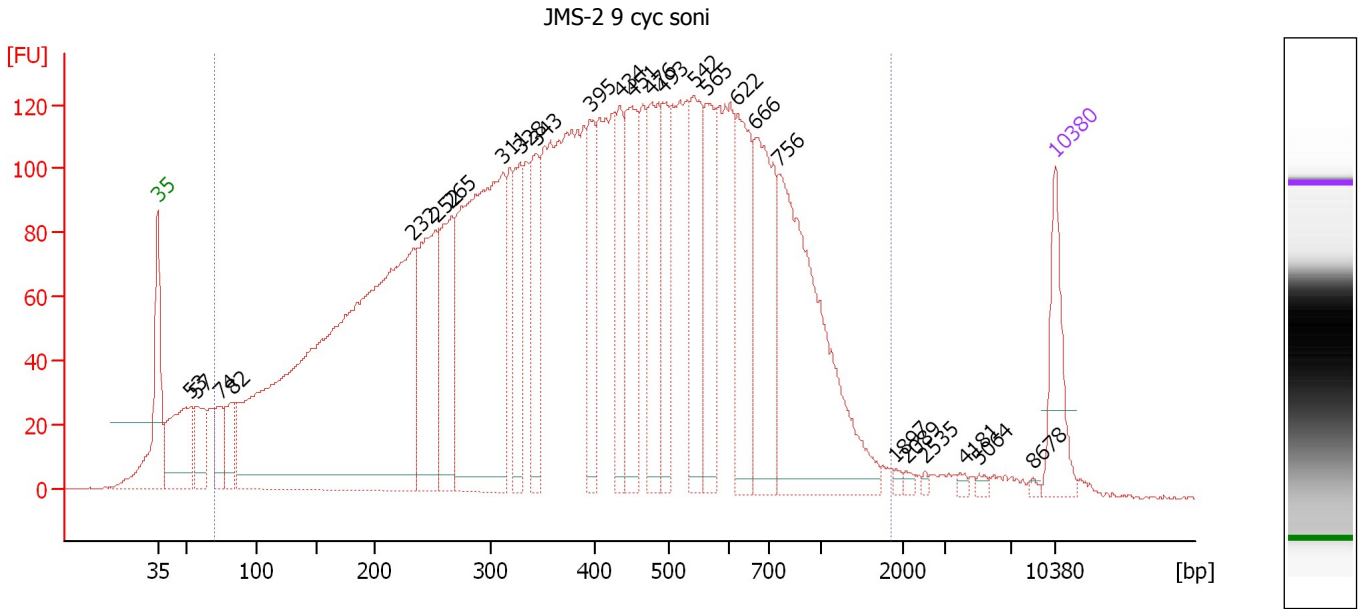
Region table for sample 9 : JMS-1 9 cyc soni

From [bp]	To [bp]	Average Size [bp]	Molarity [pmol/l]	Conc. [pg/μl]	Corr. Area	% of Total	Size distribution in CV [%]	Color
358	2,287	739	1,578.6	660.75	691.4	99	38.9	Blue

Assay Class: High Sensitivity DNA Assay
 Data Path: C:\...ents and Settings\Bioanalyzer\2012-07-27\2012-07-27_001.xad

Created: 7/27/2012 10:16:21 AM
 Modified: 7/27/2012 11:00:15 AM

Electropherogram Summary Continued ...



Overall Results for sample 10 : JMS-2 9 cyc soni

Number of peaks found: 26 Corr. Area 1: 5,717.4
 Noise: 0.2

Peak table for sample 10 : JMS-2 9 cyc soni

Peak	Size [bp]	Conc. [pg/μl]	Molarity [pmol/l]	Observations
1	35	125.00	5,411.3	Lower Marker
2	53	178.47	5,093.6	
3	57	82.46	2,183.0	
4	74	63.26	1,298.5	
5	82	55.84	1,030.4	
6	232	1,434.64	9,350.8	
7	252	257.75	1,547.1	
8	265	177.10	1,011.9	
9	311	645.15	3,139.8	
10	328	125.75	581.8	
11	343	133.07	587.7	
12	395	122.37	469.0	
13	434	105.61	368.8	
14	451	185.03	622.2	
15	476	167.67	533.6	
16	493	110.76	340.5	
17	542	171.38	478.8	
18	565	135.24	362.9	
19	622	180.04	438.7	
20	666	227.31	517.0	
21	756	434.81	871.9	
22	1,897	4.95	4.0	
23	2,089	4.70	3.4	
24	2,535	3.29	2.0	
25	4,181	4.43	1.6	
26	5,064	4.77	1.4	

Assay Class: High Sensitivity DNA Assay
Data Path: C:\...ents and Settings\Bioanalyzer\2012-07-27\2012-07-27_001.xad

Created: 7/27/2012 10:16:21 AM
Modified: 7/27/2012 11:00:15 AM

Electropherogram Summary Continued ...**... Peak table for sample 10 : JMS-2 9 cyc soni**

Peak	Size [bp]	Conc. [pg/μl]	Molarity [pmol/l]	Observations
27	8,678	2.73	0.5	
28	▶ 10,380	75.00	10.9	Upper Marker

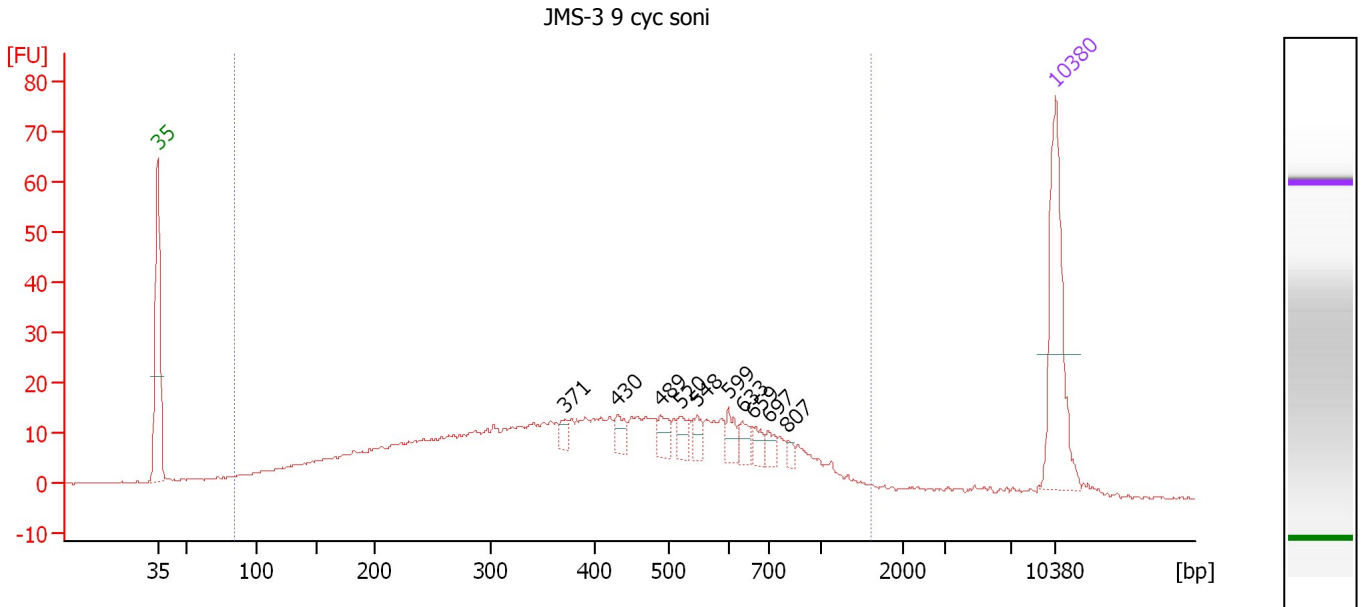
Region table for sample 10 : JMS-2 9 cyc soni

From [bp]	To [bp]	Average Size [bp]	Molarity [pmol/l]	Conc. [pg/μl]	Corr. Area	% of Total	Size distribution in CV [%]	Color
70	1,868	448	37,149.8	6,631.14	5,717.4	95	56.0	■

Assay Class: High Sensitivity DNA Assay
 Data Path: C:\...ents and Settings\Bioanalyzer\2012-07-27\2012-07-27_001.xad

Created: 7/27/2012 10:16:21 AM
 Modified: 7/27/2012 11:00:15 AM

Electropherogram Summary Continued ...



Overall Results for sample 11 : JMS-3 9 cyc soni

Number of peaks found: 10 Corr. Area 1: 650.5
 Noise: 0.2

Peak table for sample 11 : JMS-3 9 cyc soni

Peak	Size [bp]	Conc. [pg/μl]	Molarity [pmol/l]	Observations
1	35	125.00	5,411.3	Lower Marker
2	371	7.87	32.2	
3	430	12.53	44.1	
4	489	12.66	39.2	
5	520	11.40	33.2	
6	548	9.32	25.8	
7	599	12.07	30.5	
8	633	10.92	26.1	
9	659	9.32	21.4	
10	697	7.59	16.5	
11	807	4.54	8.5	
12	10,380	75.00	10.9	Upper Marker

Region table for sample 11 : JMS-3 9 cyc soni

From [bp]	To [bp]	Average Size [bp]	Molarity [pmol/l]	Conc. [pg/μl]	Corr. Area	% of Total	Size distribution in CV [%]	Color
84	1,606	446	4,766.1	924.63	650.5	95	52.2	Blue

Assay Class: High Sensitivity DNA Assay
Data Path: C:\...ents and Settings\Bioanalyzer\2012-07-27\2012-07-27_001.xad

Created: 7/27/2012 10:16:21 AM
Modified: 7/27/2012 11:00:15 AM

Gel Image

