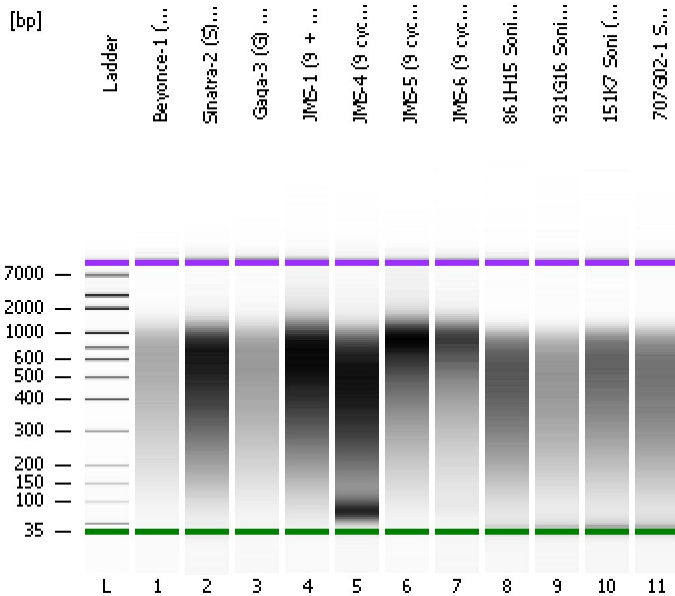


Assay Class: High Sensitivity DNA Assay
Data Path: C:\...ents and Settings\Bioanalyzer\2012-07-27\2012-07-27_002.xad

Created: 7/27/2012 11:40:25 AM
Modified: 7/27/2012 12:24:03 PM

Electrophoresis File Run Summary



Instrument Information:

Instrument Name: DE13701086 Firmware: C.01.069
Serial#: DE13701086 Type: G2938B

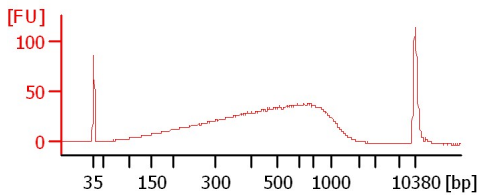
Assay Information:

Assay Origin Path: C:\Program Files\Agilent\2100 bioanalyzer\2100 expert\assays\dsDNA\High Sensitivity DNA.xsy
Assay Class: High Sensitivity DNA Assay
Version: 1.03
Assay Comments: Copyright © 2003-2010 Agilent Technologies

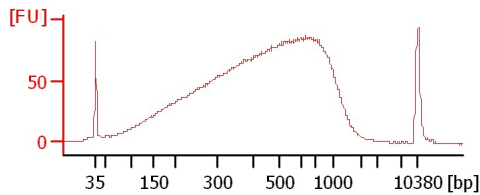
Chip Information:

Chip Lot #:
Reagent Kit Lot #:
Chip Comments:

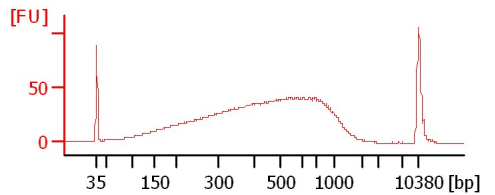
Beyonce-1 (B) 9 + 1 = 10cyc soni



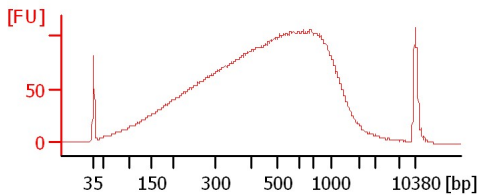
Sinatra-2 (S) 9 + 2 = 11cyc soni



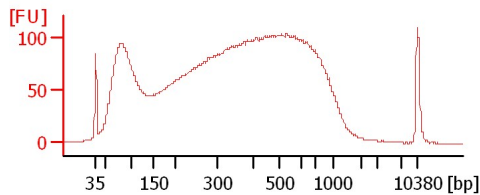
Gaga-3 (G) 9 + 1 = 10cyc soni



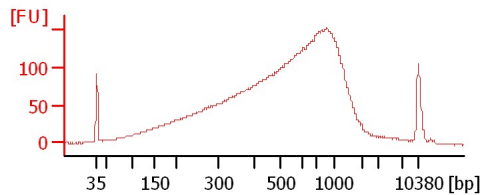
JMS-1 (9 + 1=10cyc, 1:5)



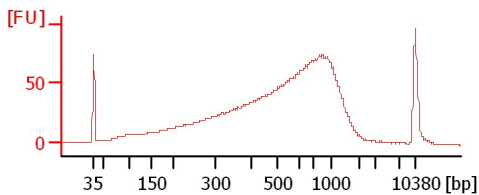
JMS-4 (9 cyc, soni)



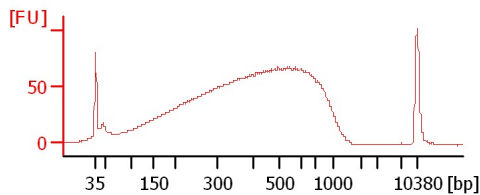
JMS-5 (9 cyc, soni)



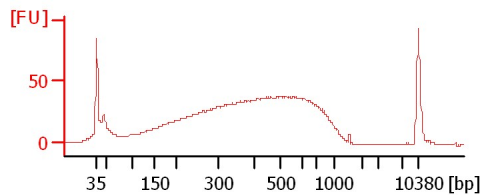
JMS-6 (9 cyc, soni)



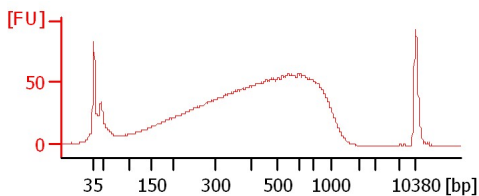
861H15 Soni (1:6)



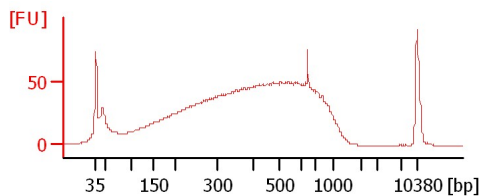
931G16 Soni (1:6)



151K7 Soni (1:6)



707G02-1 Soni(1:6)



Assay Class: High Sensitivity DNA Assay
 Data Path: C:\...ents and Settings\Bioanalyzer\2012-07-27\2012-07-27_002.xad

Created: 7/27/2012 11:40:25 AM
 Modified: 7/27/2012 12:24:03 PM

Electrophoresis File Run Summary (Chip Summary)

Sample Name	Sample Comment	Rest. Digest	Status	Observation	Result Label	Result Color
Beyonce-1 (B) 9 + 1 = 10cyc soni		<input type="checkbox"/>	✓			
Sinatra-2 (S) 9 + 2 = 11cyc soni		<input type="checkbox"/>	✓			
Gaga-3 (G) 9 + 1 = 10cyc soni		<input type="checkbox"/>	✓			
JMS-1 (9 + 1=10cyc, 1:5)		<input type="checkbox"/>	✓			
JMS-4 (9 cyc, soni)		<input type="checkbox"/>	✓			
JMS-5 (9 cyc, soni)		<input type="checkbox"/>	✓			
JMS-6 (9 cyc, soni)		<input type="checkbox"/>	✓			
861H15 Soni (1:6)		<input type="checkbox"/>	✓			
931G16 Soni (1:6)		<input type="checkbox"/>	✓			
151K7 Soni (1:6)		<input type="checkbox"/>	✓			
707G02-1 Soni(1:6)		<input type="checkbox"/>	✓			
Ladder		<input type="checkbox"/>	✓			

Chip Lot #

Reagent Kit Lot #

Chip Comments :

Assay Class: High Sensitivity DNA Assay
Data Path: C:\...ents and Settings\Bioanalyzer\2012-07-27\2012-07-27_002.xad

Created: 7/27/2012 11:40:25 AM
Modified: 7/27/2012 12:24:03 PM

Electrophoresis Assay Details

General Analysis Settings

Number of Available Sample and Ladder Wells (Max.) : 12
Minimum Visible Range [s] : 32
Maximum Visible Range [s] : 138
Start Analysis Time Range [s] : 33
End Analysis Time Range [s] : 137.5
Ladder Concentration [pg/μl] : 1950
Uses Standard Area for Ladder Fragments
Lower Marker Concentration [pg/μl] : 125
Upper Marker Concentration [pg/μl] : 75
Used Upper Marker for Quantitation
Standard Curve Fit is Point to Point
Show Data Aligned to Lower and Upper Marker

Integrator Settings

Integration Start Time [s] : 33.05
Integration End Time [s] : 137
Slope Threshold : 0.8
Height Threshold [FU] : 5
Area Threshold : 0.1
Width Threshold [s] : 0.6
Baseline Plateau [s] : 0.5

Filter Settings

Filter Width [s] : 0.5
Polynomial Order : 4

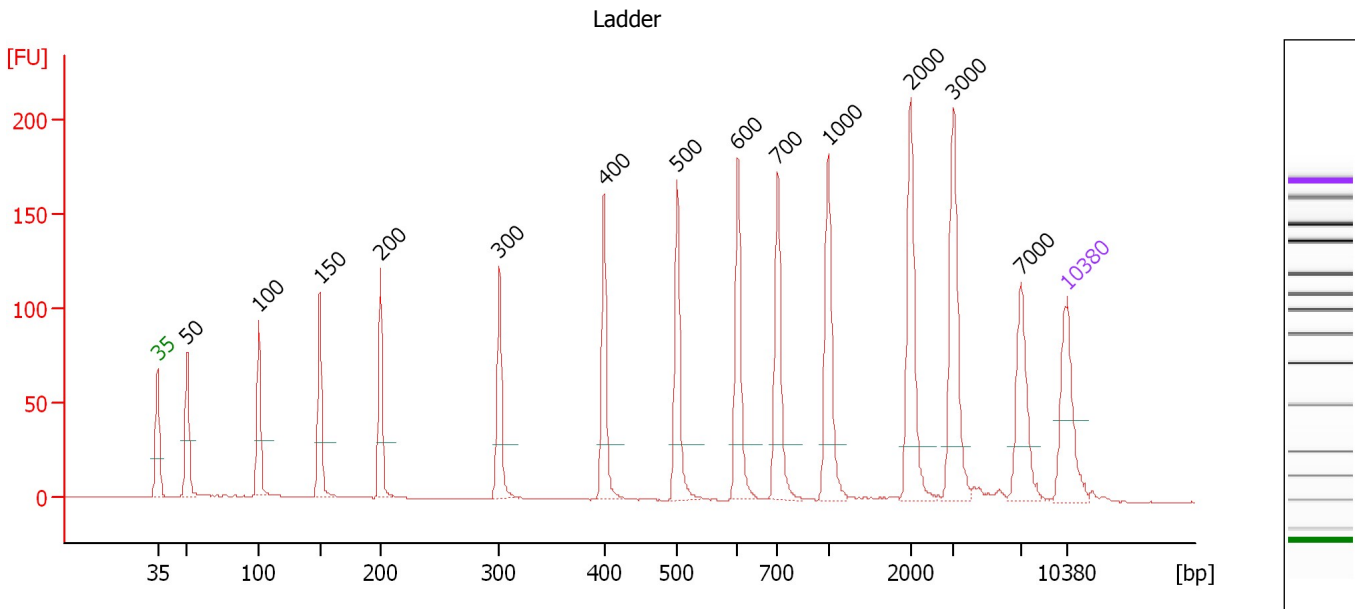
Ladder

Ladder Peak	Size	Area
1	35	160
2	50	210
3	100	208
4	150	221
5	200	242
6	300	270
7	400	305
8	500	306
9	600	336
10	700	321
11	1000	366
12	2000	413
13	3000	411
14	7000	400
15	10380	214

Assay Class: High Sensitivity DNA Assay
 Data Path: C:\...ents and Settings\Bioanalyzer\2012-07-27\2012-07-27_002.xad

Created: 7/27/2012 11:40:25 AM
 Modified: 7/27/2012 12:24:03 PM

Electropherogram Summary



Overall Results for Ladder

Noise: 0.1

Peak table for Ladder

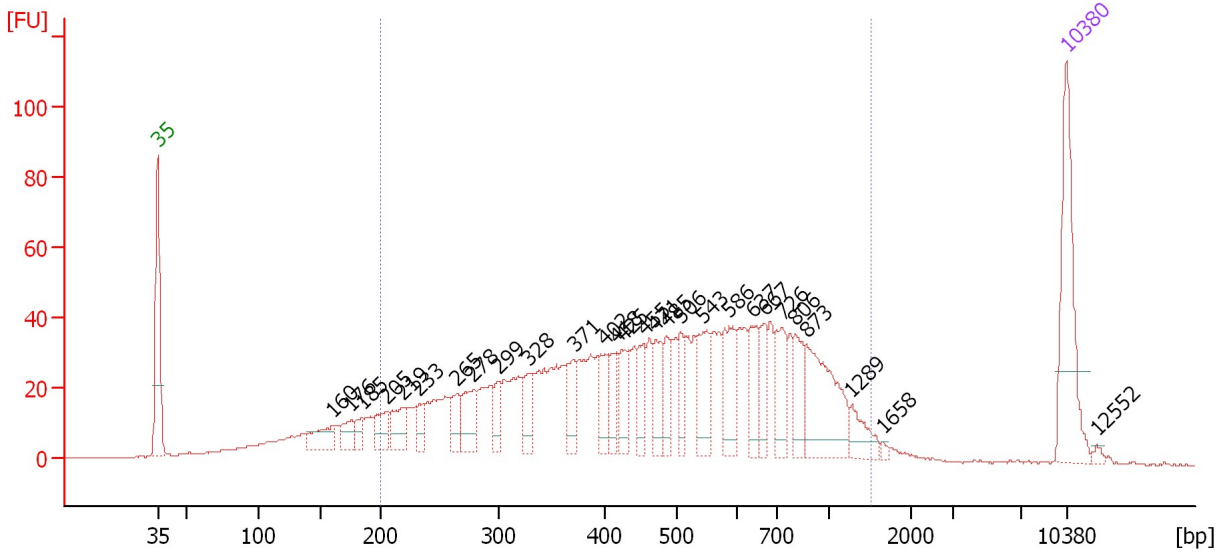
Peak	Size [bp]	Conc. [pg/µl]	Molarity [pmol/l]	Observations
1	35	125.00	5,411.3	Lower Marker
2	50	150.00	4,545.5	Ladder Peak
3	100	150.00	2,272.7	Ladder Peak
4	150	150.00	1,515.2	Ladder Peak
5	200	150.00	1,136.4	Ladder Peak
6	300	150.00	757.6	Ladder Peak
7	400	150.00	568.2	Ladder Peak
8	500	150.00	454.5	Ladder Peak
9	600	150.00	378.8	Ladder Peak
10	700	150.00	324.7	Ladder Peak
11	1,000	150.00	227.3	Ladder Peak
12	2,000	150.00	113.6	Ladder Peak
13	3,000	150.00	75.8	Ladder Peak
14	7,000	150.00	32.5	Ladder Peak
15	10,380	75.00	10.9	Upper Marker

Assay Class: High Sensitivity DNA Assay
 Data Path: C:\...ents and Settings\Bioanalyzer\2012-07-27\2012-07-27_002.xad

Created: 7/27/2012 11:40:25 AM
 Modified: 7/27/2012 12:24:03 PM

Electropherogram Summary Continued ...

Beyonce-1 (B) 9 + 1 = 10cyc soni



Overall Results for sample 1 : Beyonce-1 (B) 9 + 1 = 10cyc soni

Number of peaks found: 28 Corr. Area 1: 1,355.4
 Noise: 0.2

Peak table for sample 1 : Beyonce-1 (B) 9 + 1 = 10cyc soni

Peak	Size [bp]	Conc. [pg/μl]	Molarity [pmol/l]	Observations
1	35	125.00	5,411.3	Lower Marker
2	160	28.49	270.0	
3	176	18.66	160.7	
4	185	12.51	102.3	
5	205	23.80	175.6	
6	219	28.98	200.8	
7	233	15.23	99.0	
8	265	22.35	128.0	
9	278	35.26	192.3	
10	299	19.25	97.5	
11	328	26.37	122.0	
12	371	27.99	114.2	
13	402	30.08	113.3	
14	418	23.39	84.9	
15	425	29.24	104.3	
16	455	24.84	82.8	
17	471	30.77	99.0	
18	485	27.58	86.1	
19	506	24.24	72.6	
20	543	41.30	115.2	
21	586	41.89	108.4	
22	637	28.00	66.6	
23	667	24.97	56.7	
24	726	37.12	77.5	
25	806	27.18	51.1	
26	873	80.37	139.5	

Assay Class: High Sensitivity DNA Assay
 Data Path: C:\...ents and Settings\Bioanalyzer\2012-07-27\2012-07-27_002.xad


Created: 7/27/2012 11:40:25 AM
 Modified: 7/27/2012 12:24:03 PM

Electropherogram Summary Continued ...

... Peak table for sample 1 : Beyonce-1 (B) 9 + 1 = 10cyc soni

Peak	Size [bp]	Conc. [pg/μl]	Molarity [pmol/l]	Observations
27	1,289	19.83	23.3	
28	1,658	2.33	2.1	
29	10,380	75.00	10.9	Upper Marker
30	12,552	0.00	0.0	

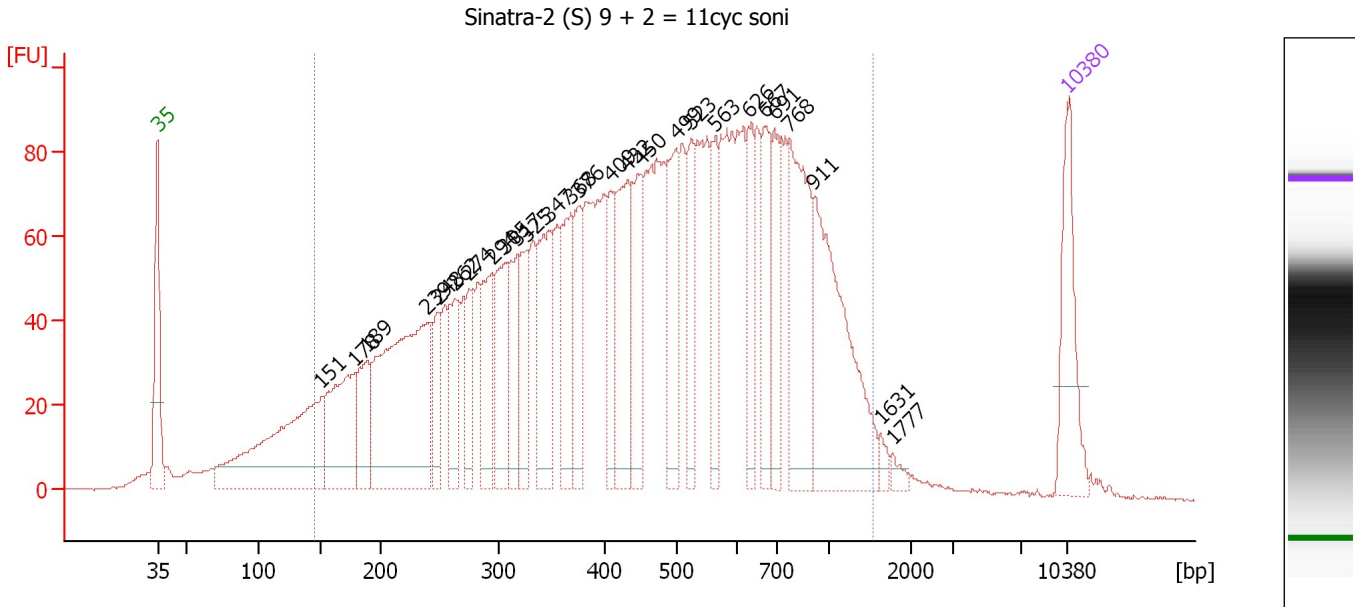
Region table for sample 1 : Beyonce-1 (B) 9 + 1 = 10cyc soni

From [bp]	To [bp]	Average Size [bp]	Molarity [pmol/l]	Conc. [pg/μl]	Corr. Area	% of Total	Size distribution in CV [%]	Color
200	1,508	530	4,990.6	1,329.11	1,355.4	86	46.6	

Assay Class: High Sensitivity DNA Assay
 Data Path: C:\...ents and Settings\Bioanalyzer\2012-07-27\2012-07-27_002.xad

Created: 7/27/2012 11:40:25 AM
 Modified: 7/27/2012 12:24:03 PM

Electropherogram Summary Continued ...



Overall Results for sample 2 : Sinatra-2 (S) 9 + 2 = 11cyc soni

Number of peaks found: 27 Corr. Area 1: 3,380.0
 Noise: 0.2

Peak table for sample 2 : Sinatra-2 (S) 9 + 2 = 11cyc soni

Peak	Size [bp]	Conc. [pg/μl]	Molarity [pmol/l]	Observations
1	35	125.00	5,411.3	Lower Marker
2	151	300.37	3,012.1	
3	178	154.70	1,316.6	
4	189	83.82	673.7	
5	239	346.86	2,196.5	
6	248	52.14	318.1	
7	262	79.10	456.7	
8	274	55.42	306.4	
9	294	91.19	469.7	
10	305	98.19	487.1	
11	317	80.56	384.5	
12	325	72.42	337.1	
13	347	114.79	501.7	
14	368	97.67	402.3	
15	376	71.36	287.6	
16	409	61.51	227.8	
17	432	123.37	432.6	
18	450	91.45	307.8	
19	499	109.33	332.1	
20	523	69.43	201.0	
21	563	65.92	177.5	
22	626	64.91	157.1	
23	667	78.72	178.9	
24	691	82.32	180.6	
25	768	160.04	315.9	
26	911	217.36	361.6	

Assay Class: High Sensitivity DNA Assay
 Data Path: C:\...ents and Settings\Bioanalyzer\2012-07-27\2012-07-27_002.xad

Created: 7/27/2012 11:40:25 AM
 Modified: 7/27/2012 12:24:03 PM

Electropherogram Summary Continued ...

... Peak table for sample 2 : Sinatra-2 (S) 9 + 2 = 11cyc soni

Peak	Size [bp]	Conc. [pg/μl]	Molarity [pmol/l]	Observations
27	1,631	8.42	7.8	
28	1,777	7.25	6.2	
29	10,380	75.00	10.9	Upper Marker

Region table for sample 2 : Sinatra-2 (S) 9 + 2 = 11cyc soni

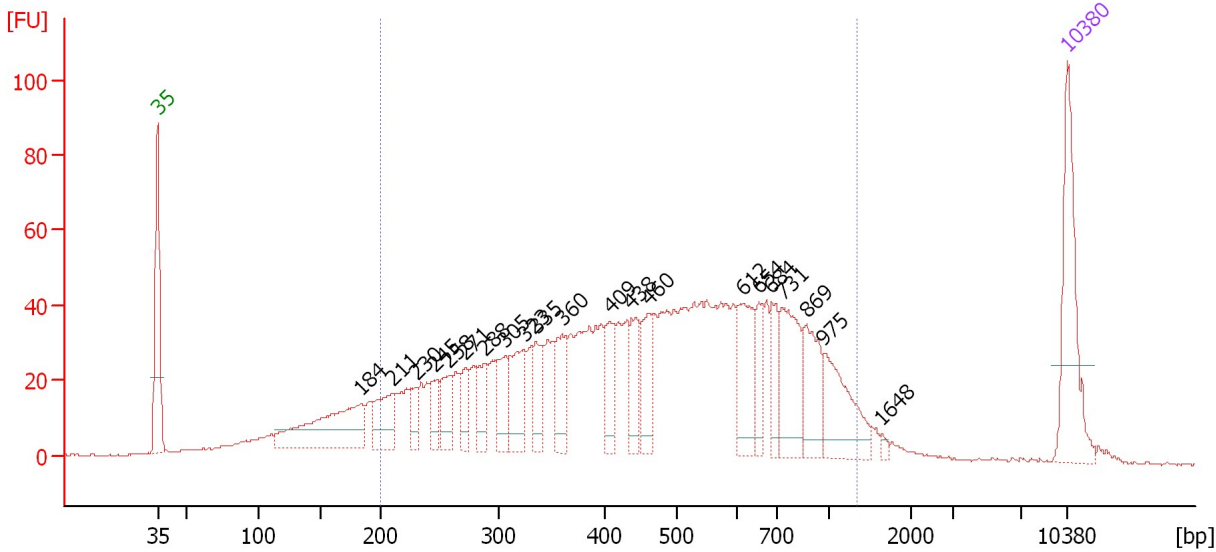
From [bp]	To [bp]	Average Size [bp]	Molarity [pmol/l]	Conc. [pg/μl]	Corr. Area	% of Total	Size distribution in CV [%]	Color
145	1,540	506	16,312.2	3,834.58	3,380.0	92	50.3	■

Assay Class: High Sensitivity DNA Assay
 Data Path: C:\...ents and Settings\Bioanalyzer\2012-07-27\2012-07-27_002.xad

Created: 7/27/2012 11:40:25 AM
 Modified: 7/27/2012 12:24:03 PM

Electropherogram Summary Continued ...

Gaga-3 (G) 9 + 1 = 10cyc soni



Overall Results for sample 3 : Gaga-3 (G) 9 + 1 = 10cyc soni

Number of peaks found: 21 Corr. Area 1: 1,522.1
 Noise: 0.2

Peak table for sample 3 : Gaga-3 (G) 9 + 1 = 10cyc soni

Peak	Size [bp]	Conc. [pg/μl]	Molarity [pmol/l]	Observations
1	35	125.00	5,411.3	Lower Marker
2	184	120.35	990.6	
3	211	47.65	342.1	
4	230	20.06	132.2	
5	245	25.03	154.9	
6	258	34.12	200.7	
7	271	25.39	142.0	
8	288	33.40	175.5	
9	305	38.65	191.8	
10	323	52.99	248.3	
11	335	37.27	168.6	
12	360	41.80	175.9	
13	409	34.32	127.3	
14	438	36.66	126.8	
15	460	41.20	135.6	
16	612	55.87	138.3	
17	654	26.25	60.9	
18	684	30.27	67.0	
19	731	70.36	145.8	
20	869	48.70	84.9	
21	975	61.83	96.1	
22	1,648	3.08	2.8	
23	10,380	75.00	10.9	Upper Marker

Assay Class: High Sensitivity DNA Assay
Data Path: C:\...ents and Settings\Bioanalyzer\2012-07-27\2012-07-27_002.xad

Created: 7/27/2012 11:40:25 AM
Modified: 7/27/2012 12:24:03 PM

Electropherogram Summary Continued ...

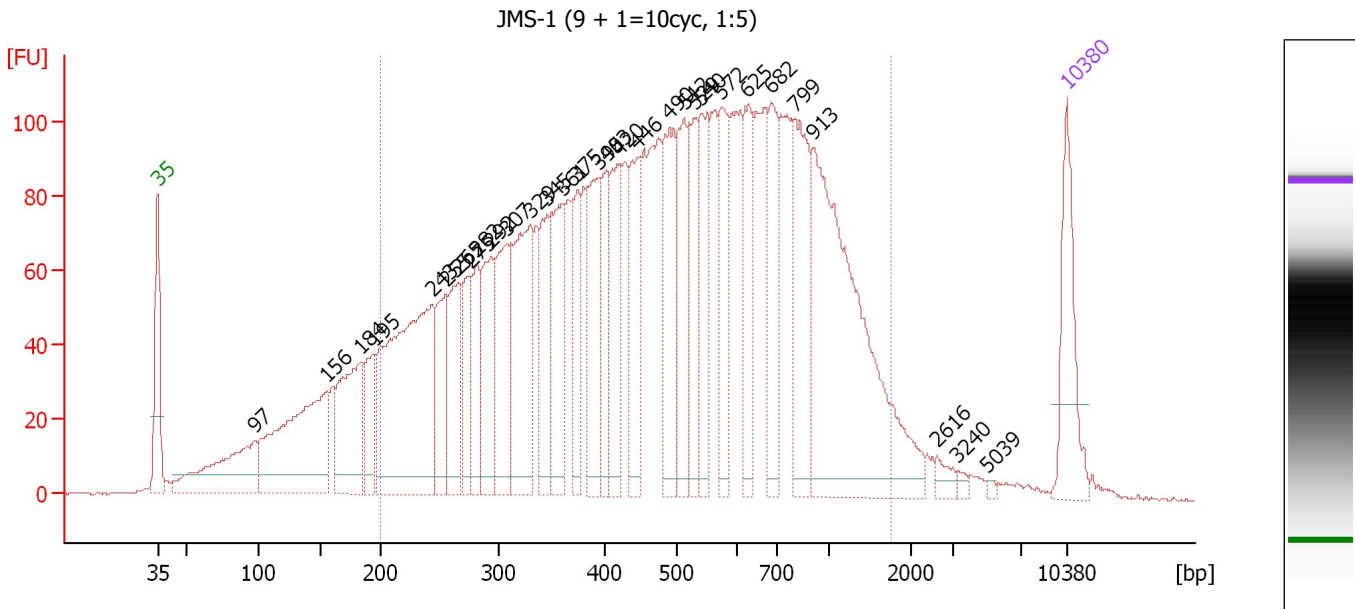
... Region table for sample 3 : Gaga-3 (G) 9 + 1 = 10cyc soni

From [bp]	To [bp]	Average Size [bp]	Molarity [pmol/l]	Conc. [pg/μl]	Corr. Area	% of Total	Size distribution in CV [%]	Color
200	1,362	510	5,934.0	1,544.75	1,522.1	85	44.6	■

Assay Class: High Sensitivity DNA Assay
 Data Path: C:\...ents and Settings\Bioanalyzer\2012-07-27\2012-07-27_002.xad

Created: 7/27/2012 11:40:25 AM
 Modified: 7/27/2012 12:24:03 PM

Electropherogram Summary Continued ...



Overall Results for sample 4 : JMS-1 (9 + 1=10cyc, 1:5)

Number of peaks found: 31 Corr. Area 1: 3,929.2
 Noise: 0.2

Peak table for sample 4 : JMS-1 (9 + 1=10cyc, 1:5)

Peak	Size [bp]	Conc. [pg/μl]	Molarity [pmol/l]	Observations
1	35	125.00	5,411.3	Lower Marker
2	97	158.38	2,463.4	
3	156	275.57	2,679.3	
4	184	153.39	1,261.5	
5	195	68.99	535.9	
6	243	383.40	2,385.7	
7	255	97.34	577.3	
8	265	105.92	604.7	
9	275	68.80	378.7	
10	282	75.21	404.8	
11	292	106.35	550.9	
12	307	133.74	660.3	
13	329	186.30	856.8	
14	345	94.88	416.2	
15	361	121.73	511.1	
16	375	70.05	283.4	
17	395	112.80	433.0	
18	403	81.45	306.6	
19	420	92.63	333.8	
20	446	98.43	334.3	
21	490	136.90	423.7	
22	512	102.51	303.4	
23	529	89.83	257.1	
24	540	100.83	283.1	
25	572	92.02	243.6	
26	625	83.81	203.3	

Assay Class: High Sensitivity DNA Assay
 Data Path: C:\...ents and Settings\Bioanalyzer\2012-07-27\2012-07-27_002.xad

Created: 7/27/2012 11:40:25 AM
 Modified: 7/27/2012 12:24:03 PM

Electropherogram Summary Continued ...

... Peak table for sample 4 : JMS-1 (9 + 1=10cyc, 1:5)

Peak	Size [bp]	Conc. [pg/μl]	Molarity [pmol/l]	Observations
27	682	95.09	211.2	
28	799	145.27	275.6	
29	913	383.49	636.1	
30	2,616	10.95	6.3	
31	3,240	4.33	2.0	
32	5,039	2.38	0.7	
33	▶ 10,380	75.00	10.9	Upper Marker

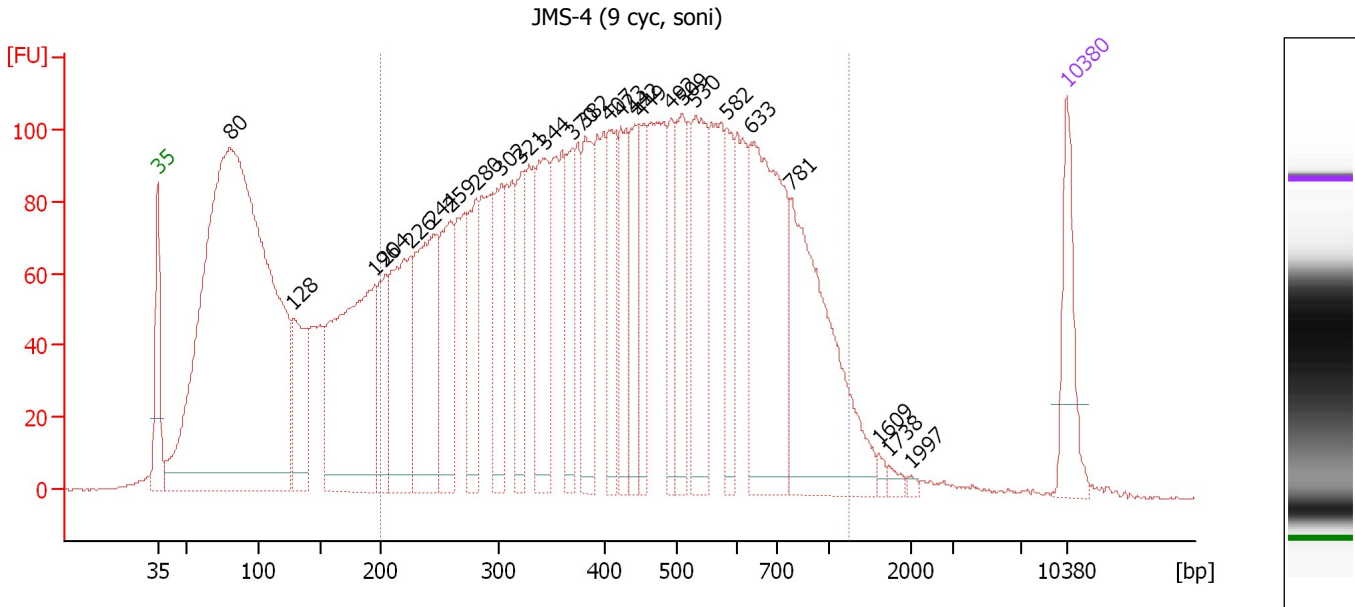
Region table for sample 4 : JMS-1 (9 + 1=10cyc, 1:5)

From [bp]	To [bp]	Average Size [bp]	Molarity [pmol/l]	Conc. [pg/μl]	Corr. Area	% of Total	Size distribution in CV [%]	Color
200	1,764	556	14,638.0	3,914.12	3,929.2	85	53.5	■

Assay Class: High Sensitivity DNA Assay
 Data Path: C:\...ents and Settings\Bioanalyzer\2012-07-27\2012-07-27_002.xad

Created: 7/27/2012 11:40:25 AM
 Modified: 7/27/2012 12:24:03 PM

Electropherogram Summary Continued ...



Overall Results for sample 5 : JMS-4 (9 cyc, soni)

Number of peaks found: 26 Corr. Area 1: 4,107.1
 Noise: 0.3

Peak table for sample 5 : JMS-4 (9 cyc, soni)

Peak	Size [bp]	Conc. [pg/μl]	Molarity [pmol/l]	Observations
1	35	125.00	5,411.3	Lower Marker
2	80	1,879.91	35,610.2	
3	128	153.36	1,815.2	
4	196	477.15	3,693.8	
5	204	114.66	851.0	
6	226	244.31	1,639.0	
7	244	274.45	1,701.7	
8	259	165.15	965.4	
9	280	119.47	645.6	
10	302	120.86	606.9	
11	321	105.82	499.5	
12	344	167.93	739.9	
13	370	88.41	362.2	
14	382	136.01	538.8	
15	407	120.55	449.0	
16	423	119.15	426.6	
17	442	105.62	361.8	
18	449	85.89	289.7	
19	492	83.84	258.0	
20	509	114.84	342.1	
21	530	159.65	456.1	
22	582	82.88	215.7	
23	633	303.04	725.3	
24	781	321.99	624.4	
25	1,609	6.19	5.8	
26	1,738	7.47	6.5	

Assay Class: High Sensitivity DNA Assay
 Data Path: C:\...ents and Settings\Bioanalyzer\2012-07-27\2012-07-27_002.xad


Created: 7/27/2012 11:40:25 AM
 Modified: 7/27/2012 12:24:03 PM

Electropherogram Summary Continued ...

... Peak table for sample 5 : JMS-4 (9 cyc, soni)

Peak	Size [bp]	Conc. [pg/ μ l]	Molarity [pmol/l]	Observations
27	1,997	3.64	2.8	
28	10,380	75.00	10.9	Upper Marker

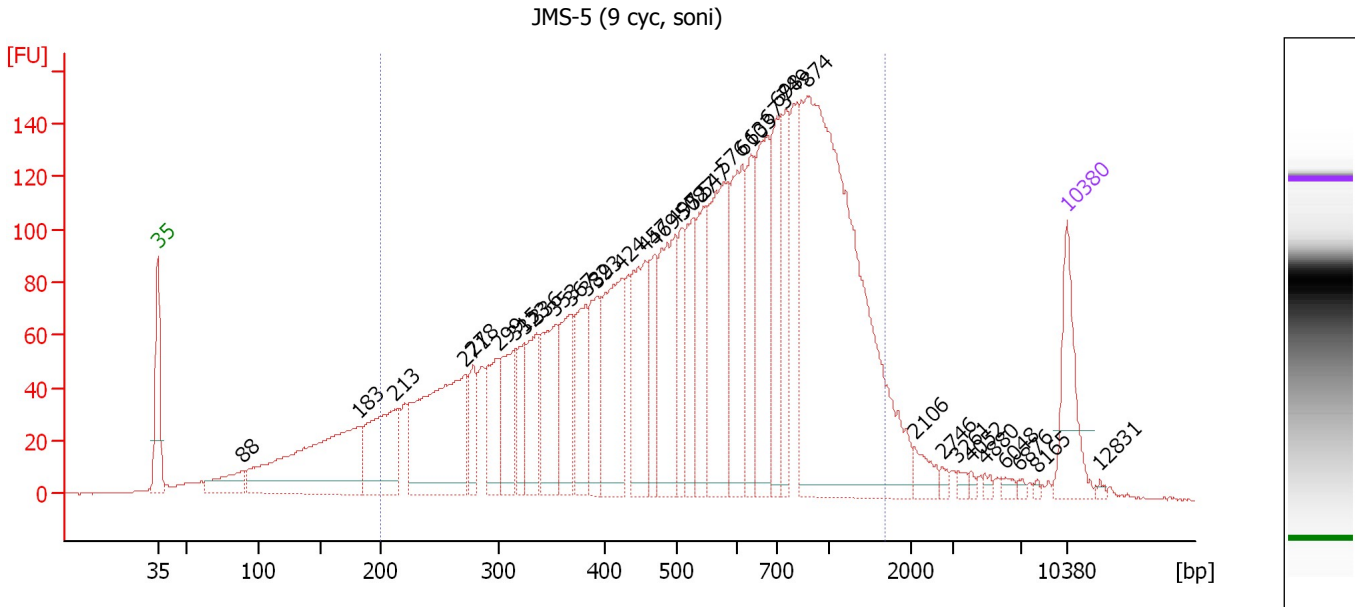
Region table for sample 5 : JMS-4 (9 cyc, soni)

From [bp]	To [bp]	Average Size [bp]	Molarity [pmol/l]	Conc. [pg/ μ l]	Corr. Area	% of Total	Size distribution in CV [%]	Color
200	1,254	466	18,202.4	4,437.72	4,107.1	68	42.6	

Assay Class: High Sensitivity DNA Assay
 Data Path: C:\...ents and Settings\Bioanalyzer\2012-07-27\2012-07-27_002.xad

Created: 7/27/2012 11:40:25 AM
 Modified: 7/27/2012 12:24:03 PM

Electropherogram Summary Continued ...



Overall Results for sample 6 : JMS-5 (9 cyc, soni)

Number of peaks found: 36 Corr. Area 1: 4,052.9
 Noise: 0.2

Peak table for sample 6 : JMS-5 (9 cyc, soni)

Peak	Size [bp]	Conc. [pg/μl]	Molarity [pmol/l]	Observations
1	35	125.00	5,411.3	Lower Marker
2	88	57.81	994.6	
3	183	338.59	2,806.6	
4	213	163.96	1,168.6	
5	271	307.17	1,718.3	
6	278	54.64	298.0	
7	299	87.09	441.8	
8	315	100.86	485.3	
9	323	54.26	254.2	
10	336	89.51	404.1	
11	353	125.84	539.7	
12	367	103.15	425.6	
13	382	100.42	397.8	
14	393	93.75	361.0	
15	424	178.58	638.5	
16	457	149.32	495.0	
17	469	74.62	240.9	
18	497	158.78	483.8	
19	508	74.04	220.7	
20	527	97.19	279.4	
21	547	98.18	271.9	
22	576	207.15	544.5	
23	610	157.93	392.0	
24	633	88.87	212.8	
25	673	167.23	376.7	
26	698	106.00	230.0	

Assay Class: High Sensitivity DNA Assay
 Data Path: C:\...ents and Settings\Bioanalyzer\2012-07-27\2012-07-27_002.xad

Created: 7/27/2012 11:40:25 AM
 Modified: 7/27/2012 12:24:03 PM

Electropherogram Summary Continued ...

... Peak table for sample 6 : JMS-5 (9 cyc, soni)

Peak	Size [bp]	Conc. [pg/µl]	Molarity [pmol/l]	Observations
27	749	106.35	215.1	
28	874	753.11	1,305.2	
29	2,106	21.10	15.2	
30	2,746	6.03	3.3	
31	3,261	5.95	2.8	
32	4,052	4.03	1.5	
33	4,880	4.90	1.5	
34	6,048	5.62	1.4	
35	6,876	3.22	0.7	
36	8,165	2.45	0.5	
37	10,380	75.00	10.9	Upper Marker
38	12,831	0.00	0.0	

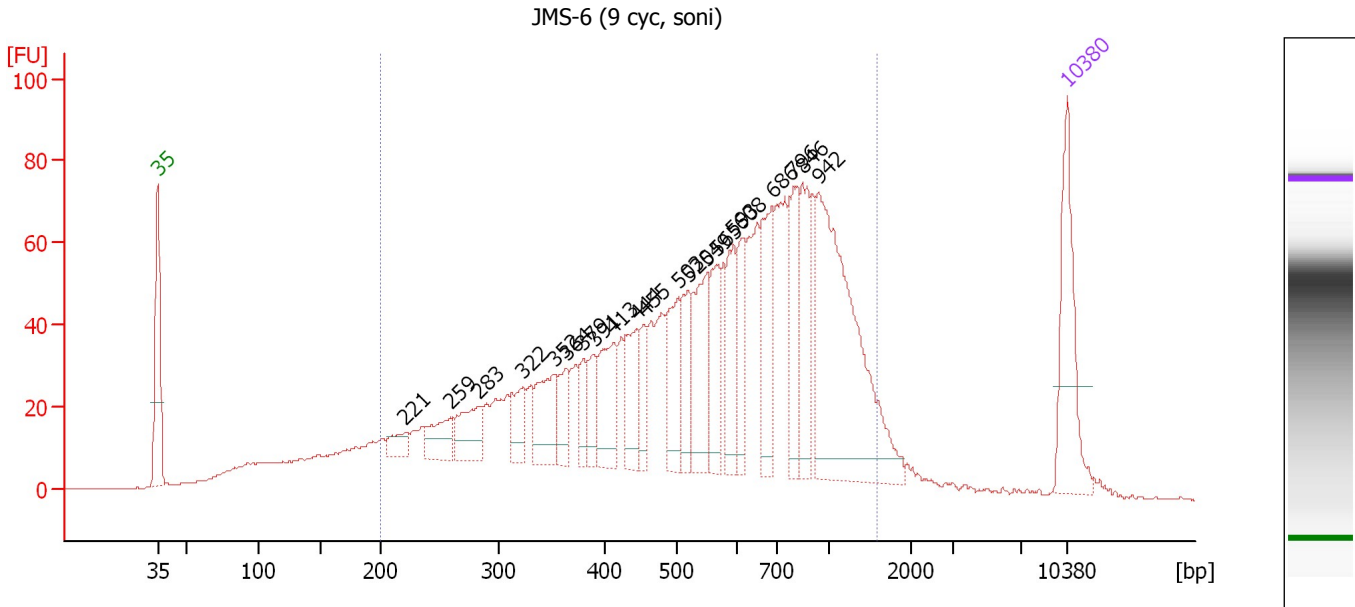
Region table for sample 6 : JMS-5 (9 cyc, soni)

From [bp]	To [bp]	Average Size [bp]	Molarity [pmol/l]	Conc. [pg/µl]	Corr. Area	% of Total	Size distribution in CV [%]	Color
200	1,679	626	12,945.2	3,829.20	4,052.9	87	50.7	

Assay Class: High Sensitivity DNA Assay
 Data Path: C:\...ents and Settings\Bioanalyzer\2012-07-27\2012-07-27_002.xad

Created: 7/27/2012 11:40:25 AM
 Modified: 7/27/2012 12:24:03 PM

Electropherogram Summary Continued ...



Overall Results for sample 7 : JMS-6 (9 cyc, soni)

Number of peaks found: 21 Corr. Area 1: 1,861.5
 Noise: 0.2

Peak table for sample 7 : JMS-6 (9 cyc, soni)

Peak	Size [bp]	Conc. [pg/μl]	Molarity [pmol/l]	Observations
1	35	125.00	5,411.3	Lower Marker
2	221	19.24	131.8	
3	259	38.13	223.0	
4	283	48.68	260.8	
5	322	35.45	166.7	
6	352	58.43	251.2	
7	364	31.42	130.7	
8	379	24.61	98.3	
9	391	27.13	105.3	
10	413	63.23	232.0	
11	444	52.28	178.5	
12	455	30.94	103.0	
13	503	58.22	175.5	
14	520	46.80	136.5	
15	549	72.61	200.3	
16	565	53.50	143.4	
17	593	58.36	149.2	
18	608	41.91	104.4	
19	686	76.34	168.7	
20	796	63.91	121.6	
21	846	62.59	112.1	
22	942	247.51	398.0	
23	10,380	75.00	10.9	Upper Marker

Assay Class: High Sensitivity DNA Assay
Data Path: C:\...ents and Settings\Bioanalyzer\2012-07-27\2012-07-27_002.xad

Created: 7/27/2012 11:40:25 AM
Modified: 7/27/2012 12:24:03 PM

Electropherogram Summary Continued ...

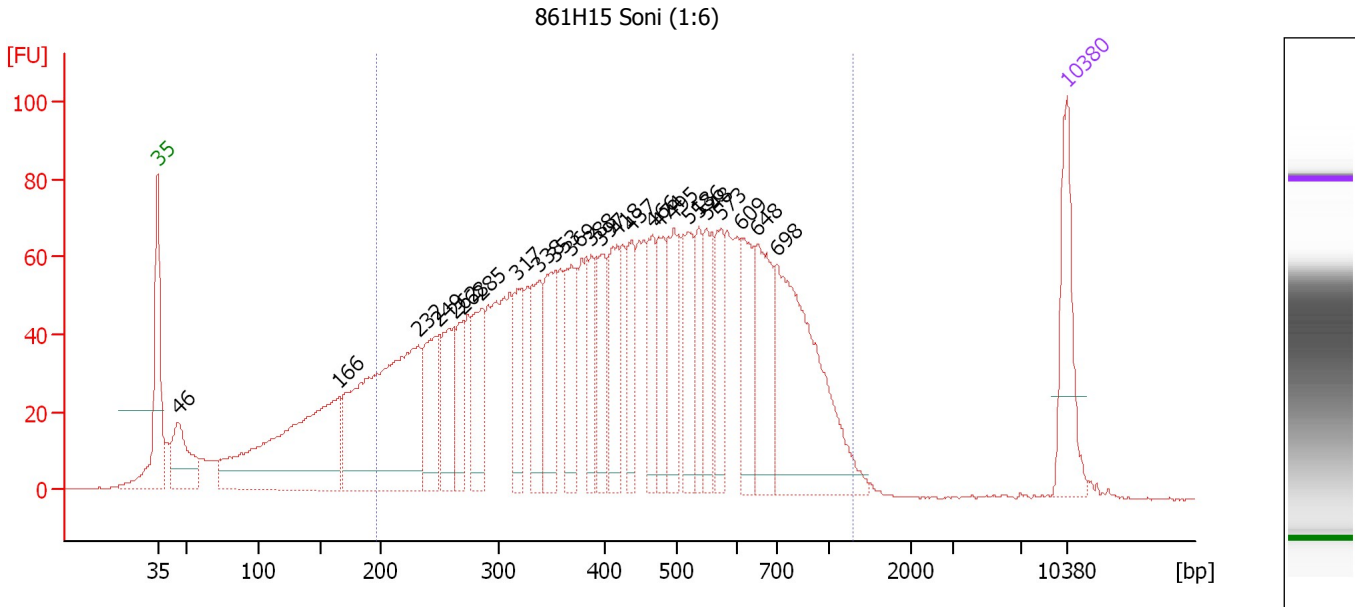
... Region table for sample 7 : JMS-6 (9 cyc, soni)

From [bp]	To [bp]	Average Size [bp]	Molarity [pmol/l]	Conc. [pg/μl]	Corr. Area	% of Total	Size distribution in CV [%]	Color
200	1,602	624	6,568.3	1,979.11	1,861.5	88	47.9	■

Assay Class: High Sensitivity DNA Assay
 Data Path: C:\...ents and Settings\Bioanalyzer\2012-07-27\2012-07-27_002.xad

Created: 7/27/2012 11:40:25 AM
 Modified: 7/27/2012 12:24:03 PM

Electropherogram Summary Continued ...



Overall Results for sample 8 : 861H15 Soni (1:6)

Number of peaks found: 25 Corr. Area 1: 2,499.0
 Noise: 0.1

Peak table for sample 8 : 861H15 Soni (1:6)

Peak	Size [bp]	Conc. [pg/μl]	Molarity [pmol/l]	Observations
1	35	125.00	5,411.3	Lower Marker
2	46	92.71	3,082.0	
3	166	352.82	3,227.6	
4	232	395.30	2,577.4	
5	249	96.53	588.0	
6	262	83.32	482.1	
7	268	57.08	322.2	
8	285	84.28	448.5	
9	317	65.33	311.9	
10	338	81.77	366.7	
11	353	86.37	370.3	
12	369	81.79	335.9	
13	388	64.81	253.4	
14	397	64.01	244.0	
15	418	81.83	296.7	
16	437	56.35	195.2	
17	466	56.36	183.3	
18	474	60.42	193.1	
19	495	81.74	250.0	
20	518	71.12	208.0	
21	536	53.43	151.0	
22	548	60.55	167.4	
23	573	62.45	165.3	
24	609	75.76	188.6	
25	648	106.97	250.2	
26	698	261.56	567.5	


Assay Class: High Sensitivity DNA Assay
Data Path: C:\...ents and Settings\Bioanalyzer\2012-07-27\2012-07-27_002.xad

Created: 7/27/2012 11:40:25 AM
Modified: 7/27/2012 12:24:03 PM

Electropherogram Summary Continued ...**... Peak table for sample 8 : 861H15 Soni (1:6)**

Peak	Size [bp]	Conc. [pg/ μ l]	Molarity [pmol/l]	Observations
27	10,380	75.00	10.9	Upper Marker

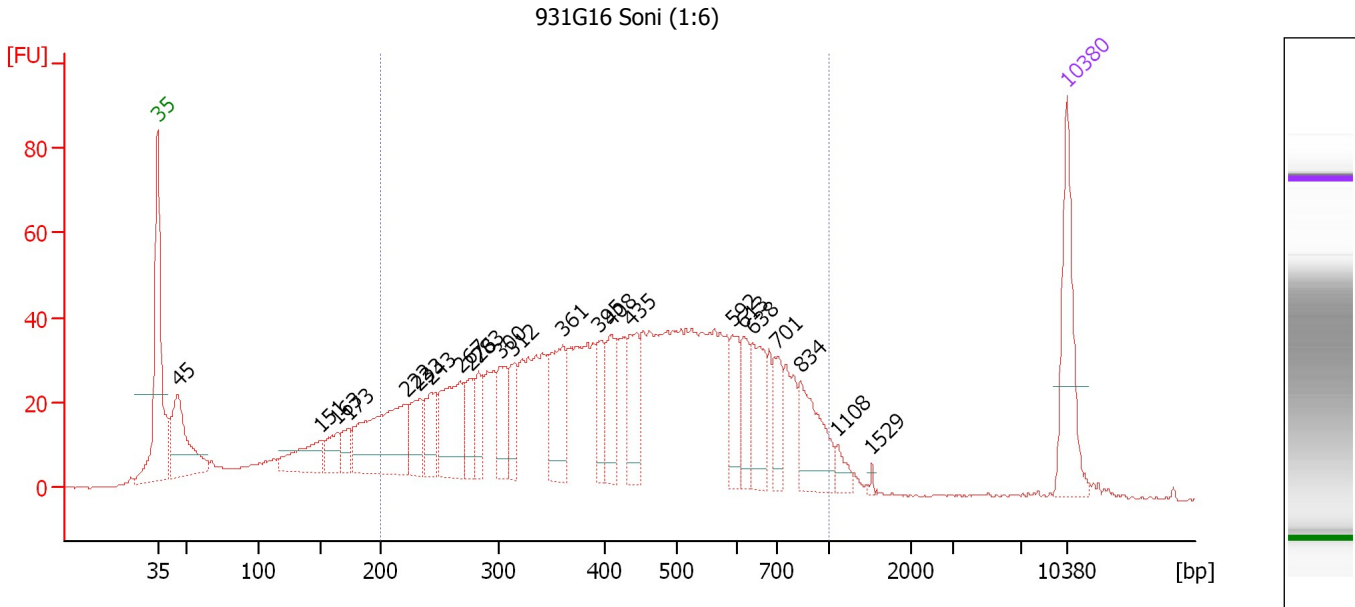
Region table for sample 8 : 861H15 Soni (1:6)

From [bp]	To [bp]	Average Size [bp]	Molarity [pmol/l]	Conc. [pg/ μ l]	Corr. Area	% of Total	Size distribution in CV [%]	Color
197	1,292	472	11,106.7	2,749.18	2,499.0	83	41.6	

Assay Class: High Sensitivity DNA Assay
 Data Path: C:\...ents and Settings\Bioanalyzer\2012-07-27\2012-07-27_002.xad

Created: 7/27/2012 11:40:25 AM
 Modified: 7/27/2012 12:24:03 PM

Electropherogram Summary Continued ...



Overall Results for sample 9 : 931G16 Soni (1:6)

Number of peaks found: 23 Corr. Area 1: 1,382.3
 Noise: 0.2

Peak table for sample 9 : 931G16 Soni (1:6)

Peak	Size [bp]	Conc. [pg/μl]	Molarity [pmol/l]	Observations
1	35	125.00	5,411.3	Lower Marker
2	45	121.35	4,053.7	
3	151	56.24	564.8	
4	163	29.75	275.8	
5	173	22.78	199.2	
6	222	156.72	1,071.9	
7	233	44.94	292.8	
8	243	45.02	280.6	
9	267	96.78	549.7	
10	276	39.43	216.4	
11	283	38.15	204.4	
12	300	50.88	256.6	
13	312	39.61	192.1	
14	361	83.08	349.0	
15	395	40.32	154.9	
16	408	46.57	172.8	
17	435	61.37	213.5	
18	592	41.83	107.0	
19	613	33.73	83.4	
20	638	57.21	135.9	
21	701	29.79	64.4	
22	834	66.76	121.3	
23	1,108	12.28	16.8	
24	1,529	2.10	2.1	
25	10,380	75.00	10.9	Upper Marker

Assay Class: High Sensitivity DNA Assay
Data Path: C:\...ents and Settings\Bioanalyzer\2012-07-27\2012-07-27_002.xad

Created: 7/27/2012 11:40:25 AM
Modified: 7/27/2012 12:24:03 PM

Electropherogram Summary Continued ...

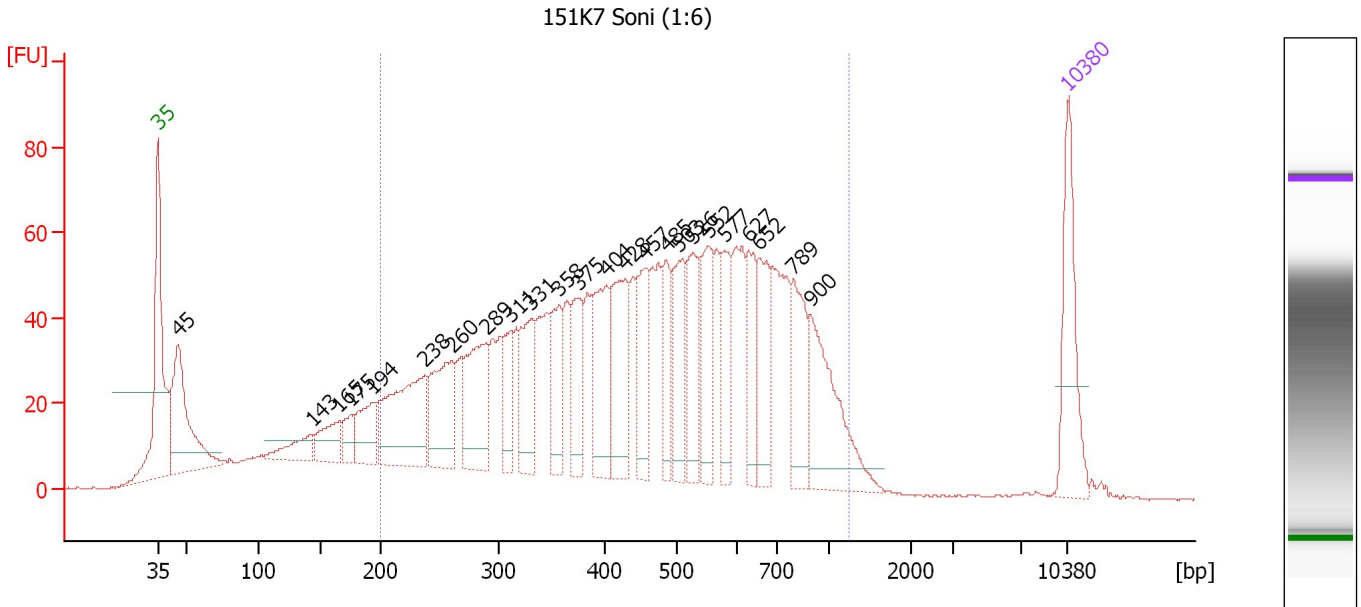
... Region table for sample 9 : 931G16 Soni (1:6)

From [bp]	To [bp]	Average Size [bp]	Molarity [pmol/l]	Conc. [pg/μl]	Corr. Area	% of Total	Size distribution in CV [%]	Color
200	1,000	455	7,587.4	1,862.29	1,382.3	79	37.9	■

Assay Class: High Sensitivity DNA Assay
 Data Path: C:\...ents and Settings\Bioanalyzer\2012-07-27\2012-07-27_002.xad

Created: 7/27/2012 11:40:25 AM
 Modified: 7/27/2012 12:24:03 PM

Electropherogram Summary Continued ...



Overall Results for sample 10 : 151K7 Soni (1:6)

Number of peaks found: 24 Corr. Area 1: 1,949.2
 Noise: 0.2

Peak table for sample 10 : 151K7 Soni (1:6)

Peak	Size [bp]	Conc. [pg/μl]	Molarity [pmol/l]	Observations
1	35	125.00	5,411.3	Lower Marker
2	45	177.54	5,912.9	
3	143	38.48	406.6	
4	165	45.72	418.8	
5	175	26.91	232.5	
6	194	55.26	431.2	
7	238	154.73	986.4	
8	260	101.00	588.5	
9	289	110.99	582.9	
10	311	44.39	216.2	
11	331	78.44	359.3	
12	358	57.80	244.9	
13	375	65.82	265.7	
14	404	93.98	352.6	
15	428	100.17	354.2	
16	457	66.96	222.1	
17	485	49.14	153.5	
18	503	75.10	226.3	
19	526	67.71	195.0	
20	552	70.78	194.2	
21	577	53.60	140.6	
22	627	58.64	141.6	
23	652	64.02	148.7	
24	789	74.48	143.0	
25	900	113.66	191.3	
26	10,380	75.00	10.9	Upper Marker

Assay Class: High Sensitivity DNA Assay
Data Path: C:\...ents and Settings\Bioanalyzer\2012-07-27\2012-07-27_002.xad

Created: 7/27/2012 11:40:25 AM
Modified: 7/27/2012 12:24:03 PM

Electropherogram Summary Continued ...

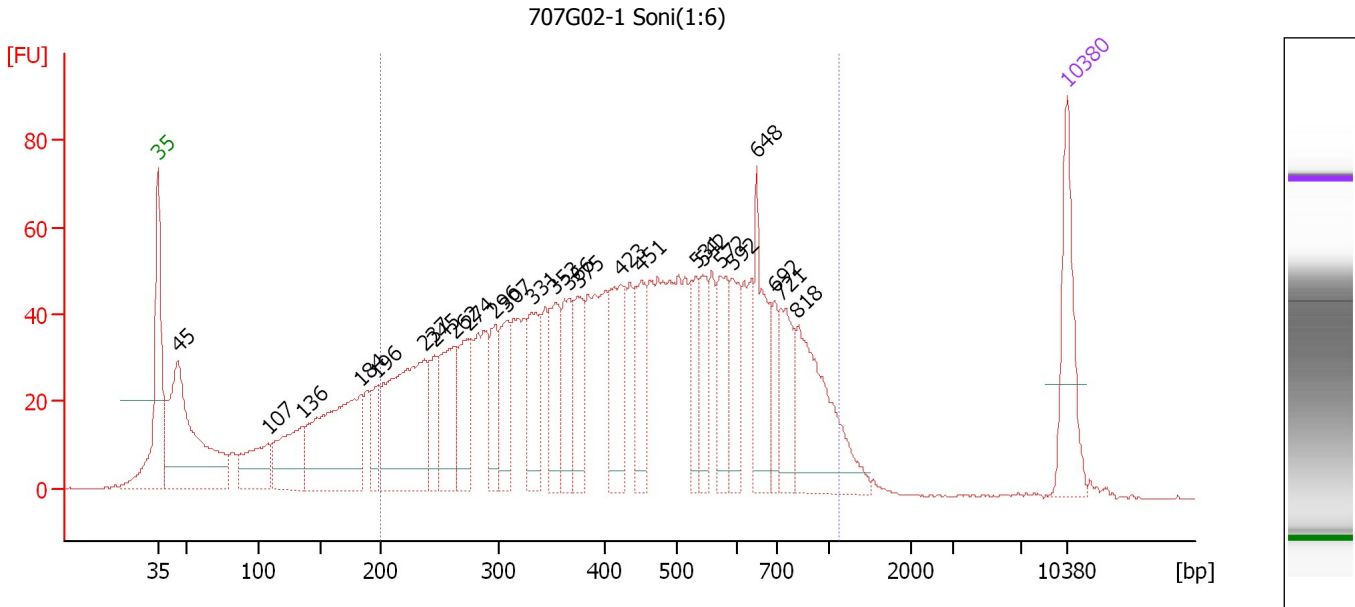
... Region table for sample 10 : 151K7 Soni (1:6)

From [bp]	To [bp]	Average Size [bp]	Molarity [pmol/l]	Conc. [pg/μl]	Corr. Area	% of Total	Size distribution in CV [%]	Color
200	1,252	492	9,299.5	2,395.54	1,949.2	81	41.4	■

Assay Class: High Sensitivity DNA Assay
 Data Path: C:\...ents and Settings\Bioanalyzer\2012-07-27\2012-07-27_002.xad

Created: 7/27/2012 11:40:25 AM
 Modified: 7/27/2012 12:24:03 PM

Electropherogram Summary Continued ...



Overall Results for sample 11 : 707G02-1 Soni(1:6)

Number of peaks found: 25 Corr. Area 1: 1,832.2
 Noise: 0.1

Peak table for sample 11 : 707G02-1 Soni(1:6)

Peak	Size [bp]	Conc. [pg/μl]	Molarity [pmol/l]	Observations
1	35	125.00	5,411.3	Lower Marker
2	45	305.55	10,230.7	
3	107	84.92	1,198.7	
4	136	102.90	1,147.8	
5	184	226.98	1,873.2	
6	196	42.90	330.8	
7	237	238.80	1,526.5	
8	245	48.80	301.2	
9	262	98.42	569.5	
10	274	82.19	455.0	
11	296	60.47	309.3	
12	307	60.87	300.2	
13	331	85.01	389.1	
14	353	72.51	310.8	
15	366	72.24	298.8	
16	375	64.06	258.6	
17	423	94.58	339.1	
18	451	70.53	236.8	
19	531	48.16	137.4	
20	542	47.83	133.7	
21	572	69.84	185.0	
22	592	57.01	145.9	
23	648	96.92	226.5	
24	692	38.66	84.6	
25	721	60.83	127.8	
26	818	149.89	277.8	


Assay Class: High Sensitivity DNA Assay
Data Path: C:\...ents and Settings\Bioanalyzer\2012-07-27\2012-07-27_002.xad

Created: 7/27/2012 11:40:25 AM
Modified: 7/27/2012 12:24:03 PM

Electropherogram Summary Continued ...**... Peak table for sample 11 : 707G02-1 Soni(1:6)**

Peak	Size [bp]	Conc. [pg/ μ l]	Molarity [pmol/l]	Observations
27	10,380	75.00	10.9	Upper Marker

Region table for sample 11 : 707G02-1 Soni(1:6)

From [bp]	To [bp]	Average Size [bp]	Molarity [pmol/l]	Conc. [pg/ μ l]	Corr. Area	% of Total	Size distribution in CV [%]	Color
201	1,132	468	9,812.6	2,431.05	1,832.2	78	40.2	

Assay Class: High Sensitivity DNA Assay
Data Path: C:\...ents and Settings\Bioanalyzer\2012-07-27\2012-07-27_002.xad

Created: 7/27/2012 11:40:25 AM
Modified: 7/27/2012 12:24:03 PM

Gel Image

