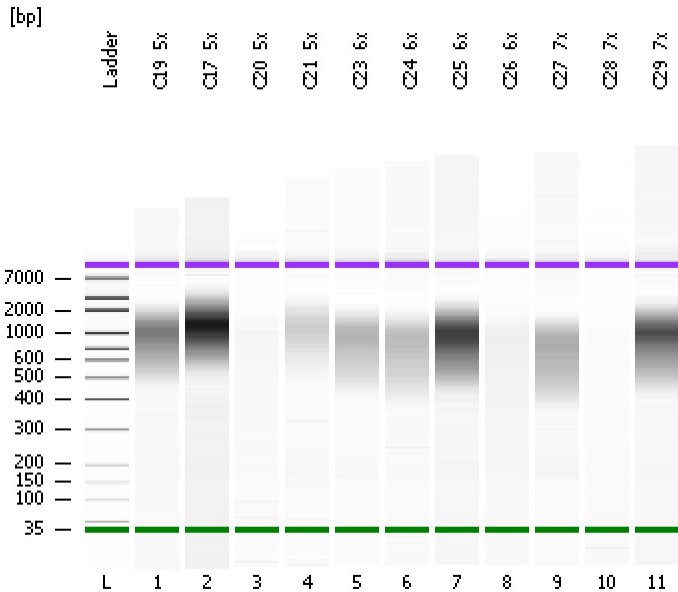


Assay Class: High Sensitivity DNA Assay
Data Path: C:\...ents and Settings\Bioanalyzer\2012-07-27\2012-07-27_003.xad

Created: 7/27/2012 1:09:42 PM
Modified: 7/27/2012 1:55:12 PM

Electrophoresis File Run Summary



Instrument Information:

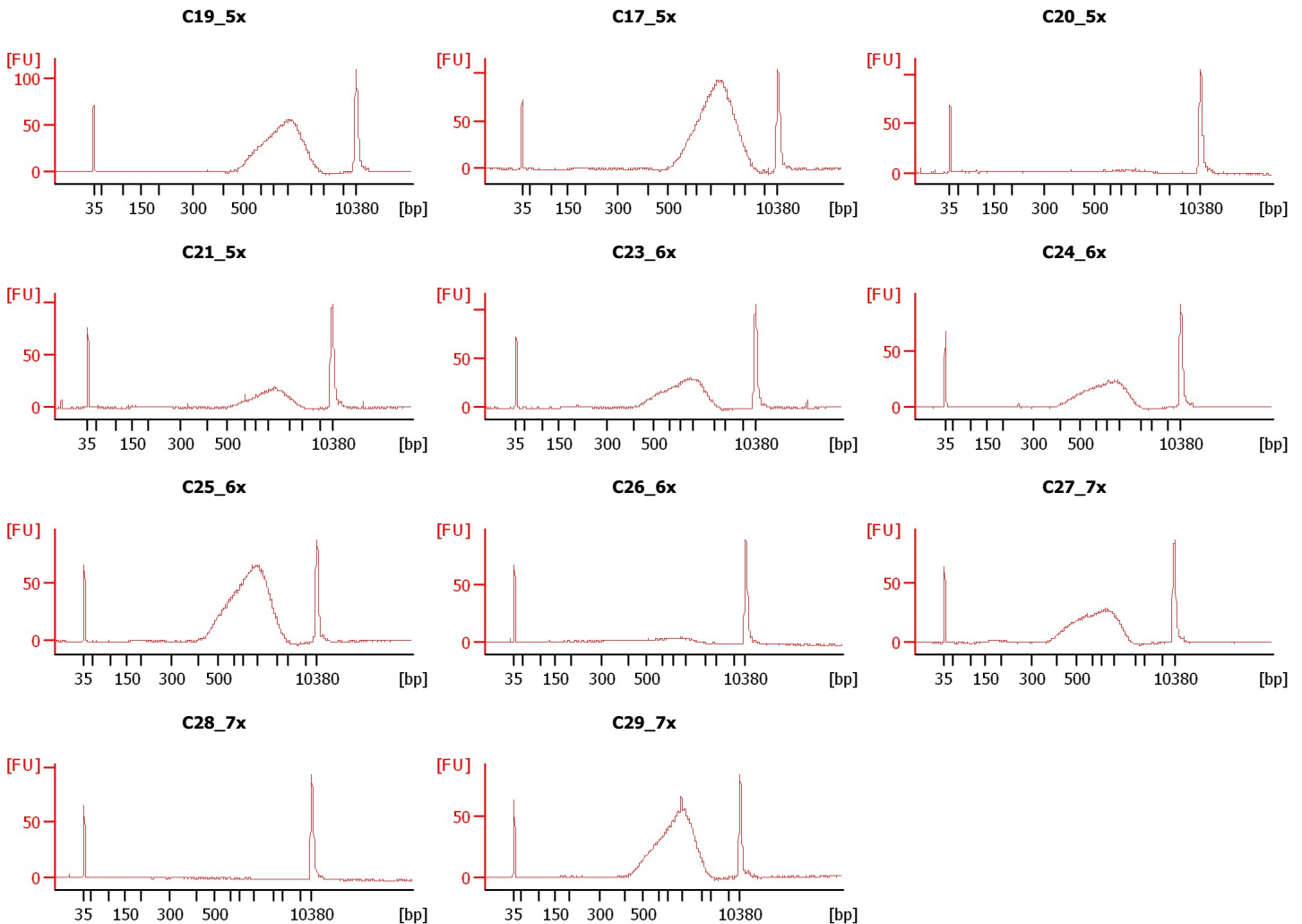
Instrument Name: DE13701086 Firmware: C.01.069
Serial#: DE13701086 Type: G2938B

Assay Information:

Assay Origin Path: C:\Program Files\Agilent\2100 bioanalyzer\2100 expert\assays\dsDNA\High Sensitivity DNA.xsy
Assay Class: High Sensitivity DNA Assay
Version: 1.03
Assay Comments: Copyright © 2003-2010 Agilent Technologies

Chip Information:

Chip Lot #: Reagent Kit Lot #: Chip Comments:



Assay Class: High Sensitivity DNA Assay
Data Path: C:\...ents and Settings\Bioanalyzer\2012-07-27\2012-07-27_003.xad

Created: 7/27/2012 1:09:42 PM
Modified: 7/27/2012 1:55:12 PM

Electrophoresis File Run Summary (Chip Summary)

Sample Name	Sample Comment	Rest. Digest	Status	Observation	Result Label	Result Color
C19_5x		<input type="checkbox"/>	✓			
C17_5x		<input type="checkbox"/>	✓			
C20_5x		<input type="checkbox"/>	✓			
C21_5x		<input type="checkbox"/>	✓			
C23_6x		<input type="checkbox"/>	✓			
C24_6x		<input type="checkbox"/>	✓			
C25_6x		<input type="checkbox"/>	✓			
C26_6x		<input type="checkbox"/>	✓			
C27_7x		<input type="checkbox"/>	✓			
C28_7x		<input type="checkbox"/>	✓			
C29_7x		<input type="checkbox"/>	✓			
Ladder		<input type="checkbox"/>	✓			

Chip Lot #

Reagent Kit Lot #

Chip Comments :

Assay Class: High Sensitivity DNA Assay
Data Path: C:\...ents and Settings\Bioanalyzer\2012-07-27\2012-07-27_003.xad

Created: 7/27/2012 1:09:42 PM
Modified: 7/27/2012 1:55:12 PM

Electrophoresis Assay Details

General Analysis Settings

Number of Available Sample and Ladder Wells (Max.) : 12
Minimum Visible Range [s] : 32
Maximum Visible Range [s] : 138
Start Analysis Time Range [s] : 33
End Analysis Time Range [s] : 137.5
Ladder Concentration [pg/μl] : 1950
Uses Standard Area for Ladder Fragments
Lower Marker Concentration [pg/μl] : 125
Upper Marker Concentration [pg/μl] : 75
Used Upper Marker for Quantitation
Standard Curve Fit is Point to Point
Show Data Aligned to Lower and Upper Marker

Integrator Settings

Integration Start Time [s] : 33.05
Integration End Time [s] : 137
Slope Threshold : 0.8
Height Threshold [FU] : 5
Area Threshold : 0.1
Width Threshold [s] : 0.6
Baseline Plateau [s] : 0.5

Filter Settings

Filter Width [s] : 0.5
Polynomial Order : 4

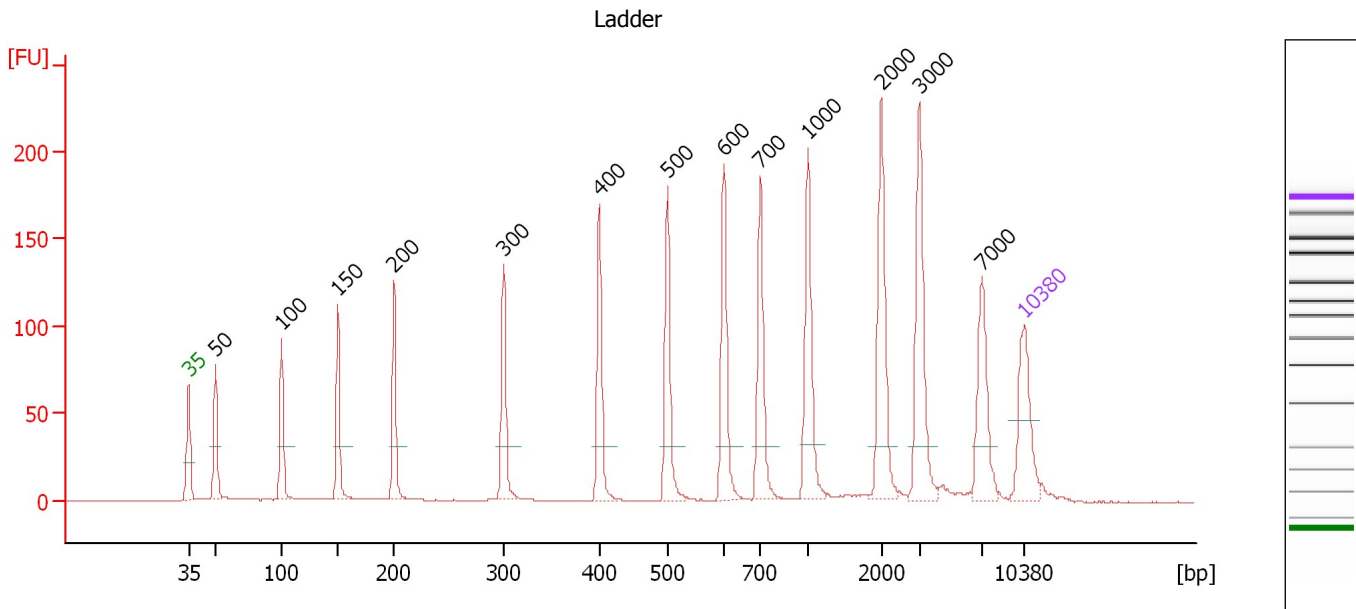
Ladder

Ladder Peak	Size	Area
1	35	160
2	50	210
3	100	208
4	150	221
5	200	242
6	300	270
7	400	305
8	500	306
9	600	336
10	700	321
11	1000	366
12	2000	413
13	3000	411
14	7000	400
15	10380	214

Assay Class: High Sensitivity DNA Assay
 Data Path: C:\...ents and Settings\Bioanalyzer\2012-07-27\2012-07-27_003.xad

Created: 7/27/2012 1:09:42 PM
 Modified: 7/27/2012 1:55:12 PM

Electropherogram Summary



Overall Results for Ladder

Noise: 0.1

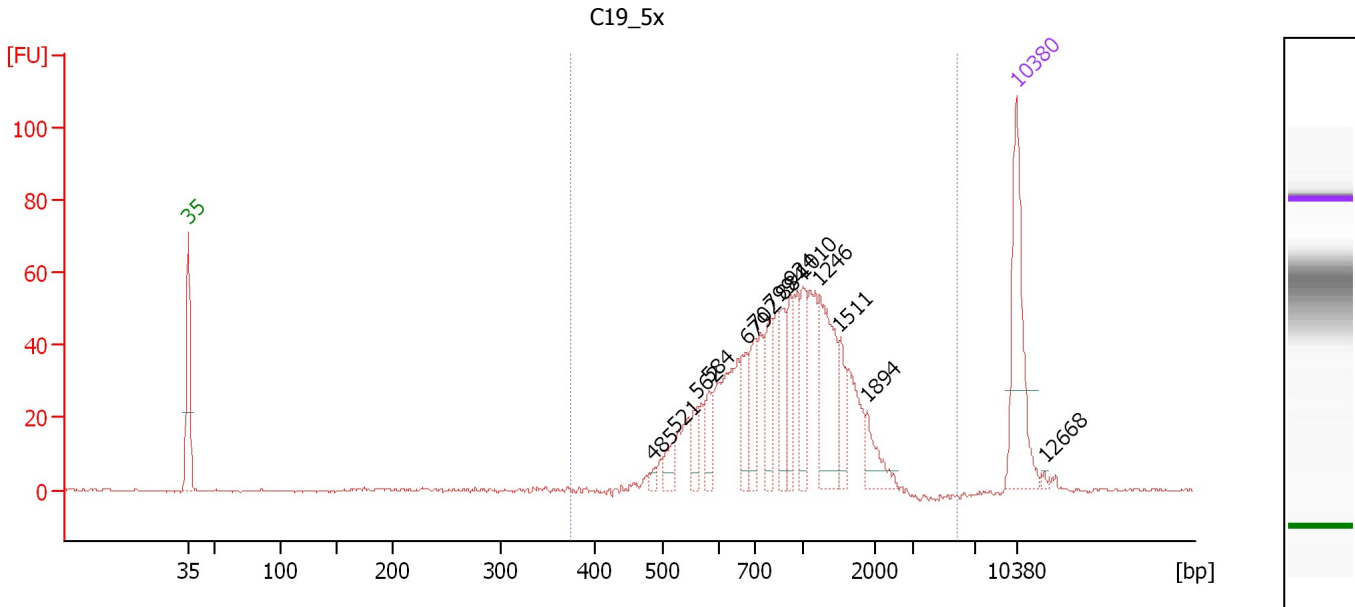
Peak table for Ladder

Peak	Size [bp]	Conc. [pg/μl]	Molarity [pmol/l]	Observations
1	35	125.00	5,411.3	Lower Marker
2	50	150.00	4,545.5	Ladder Peak
3	100	150.00	2,272.7	Ladder Peak
4	150	150.00	1,515.2	Ladder Peak
5	200	150.00	1,136.4	Ladder Peak
6	300	150.00	757.6	Ladder Peak
7	400	150.00	568.2	Ladder Peak
8	500	150.00	454.5	Ladder Peak
9	600	150.00	378.8	Ladder Peak
10	700	150.00	324.7	Ladder Peak
11	1,000	150.00	227.3	Ladder Peak
12	2,000	150.00	113.6	Ladder Peak
13	3,000	150.00	75.8	Ladder Peak
14	7,000	150.00	32.5	Ladder Peak
15	10,380	75.00	10.9	Upper Marker

Assay Class: High Sensitivity DNA Assay
 Data Path: C:\...ents and Settings\Bioanalyzer\2012-07-27\2012-07-27_003.xad

Created: 7/27/2012 1:09:42 PM
 Modified: 7/27/2012 1:55:12 PM

Electropherogram Summary Continued ...



Overall Results for sample 1 : C19_5x

Number of peaks found: 14 Corr. Area 1: 737.6
 Noise: 0.2

Peak table for sample 1 : C19_5x

Peak	Size [bp]	Conc. [pg/μl]	Molarity [pmol/l]	Observations
1	35	125.00	5,411.3	Lower Marker
2	485	4.16	13.0	
3	521	14.96	43.5	
4	562	17.60	47.4	
5	584	19.02	49.4	
6	679	28.53	63.7	
7	702	32.88	71.0	
8	799	32.78	62.1	
9	884	31.93	54.8	
10	924	30.43	49.9	
11	1,010	35.32	53.0	
12	1,246	73.90	89.9	
13	1,511	20.89	20.9	
14	1,894	21.01	16.8	
15	10,380	75.00	10.9	Upper Marker
16	12,668	0.00	0.0	

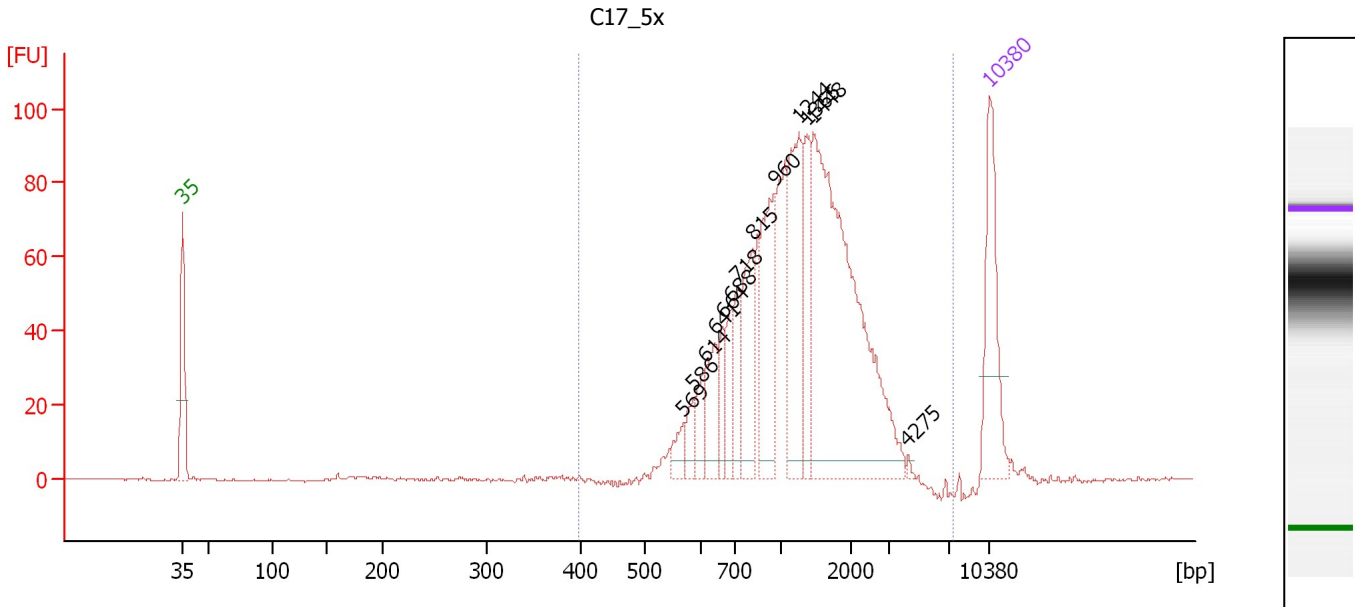
Region table for sample 1 : C19_5x

From [bp]	To [bp]	Average Size [bp]	Molarity [pmol/l]	Conc. [pg/μl]	Corr. Area	% of Total	Size distribution in CV [%]	Color
375	5,910	1,000	1,222.6	670.31	737.6	99	41.9	Blue

Assay Class: High Sensitivity DNA Assay
 Data Path: C:\...ents and Settings\Bioanalyzer\2012-07-27\2012-07-27_003.xad

Created: 7/27/2012 1:09:42 PM
 Modified: 7/27/2012 1:55:12 PM

Electropherogram Summary Continued ...



Overall Results for sample 2 : C17_5x

Number of peaks found: 13 Corr. Area 1: 1,145.6
 Noise: 0.3

Peak table for sample 2 : C17_5x

Peak	Size [bp]	Conc. [pg/µl]	Molarity [pmol/l]	Observations
1	35	125.00	5,411.3	Lower Marker
2	569	16.75	44.6	
3	586	17.50	45.2	
4	614	24.88	61.4	
5	641	40.51	95.7	
6	664	27.64	63.1	
7	688	28.81	63.4	
8	718	37.08	78.2	
9	815	68.12	126.7	
10	960	94.59	149.3	
11	1,244	105.23	128.2	
12	1,365	50.89	56.5	
13	1,448	344.02	360.0	
14	4,275	1.89	0.7	
15	10,380	75.00	10.9	Upper Marker

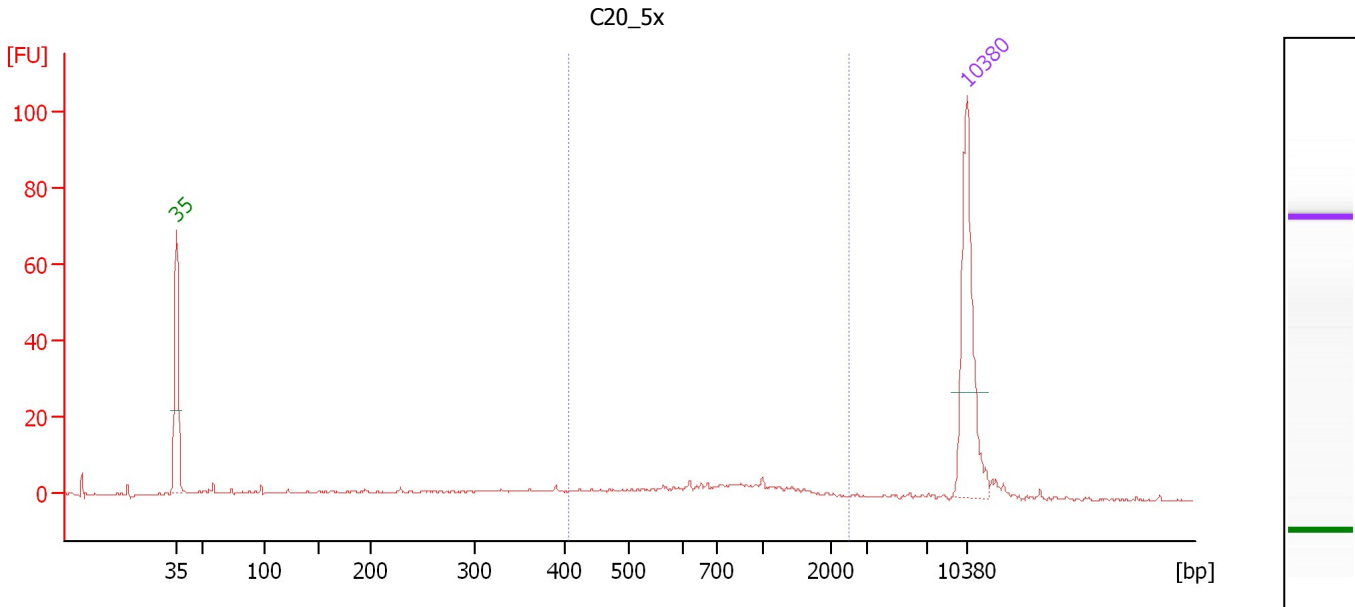
Region table for sample 2 : C17_5x

From [bp]	To [bp]	Average Size [bp]	Molarity [pmol/l]	Conc. [pg/µl]	Corr. Area	% of Total	Size distribution in CV [%]	Color
399	7,262	1,333	1,387.9	962.40	1,145.6	99	48.3	Blue

Assay Class: High Sensitivity DNA Assay
 Data Path: C:\...ents and Settings\Bioanalyzer\2012-07-27\2012-07-27_003.xad

Created: 7/27/2012 1:09:42 PM
 Modified: 7/27/2012 1:55:12 PM

Electropherogram Summary Continued ...



Overall Results for sample 3 : C20_5x

Number of peaks found: 0 Corr. Area 1: 69.7
 Noise: 0.3

Peak table for sample 3 : C20_5x

Peak	Size [bp]	Conc. [pg/μl]	Molarity [pmol/l]	Observations
1	35	125.00	5,411.3	Lower Marker
2	10,380	75.00	10.9	Upper Marker

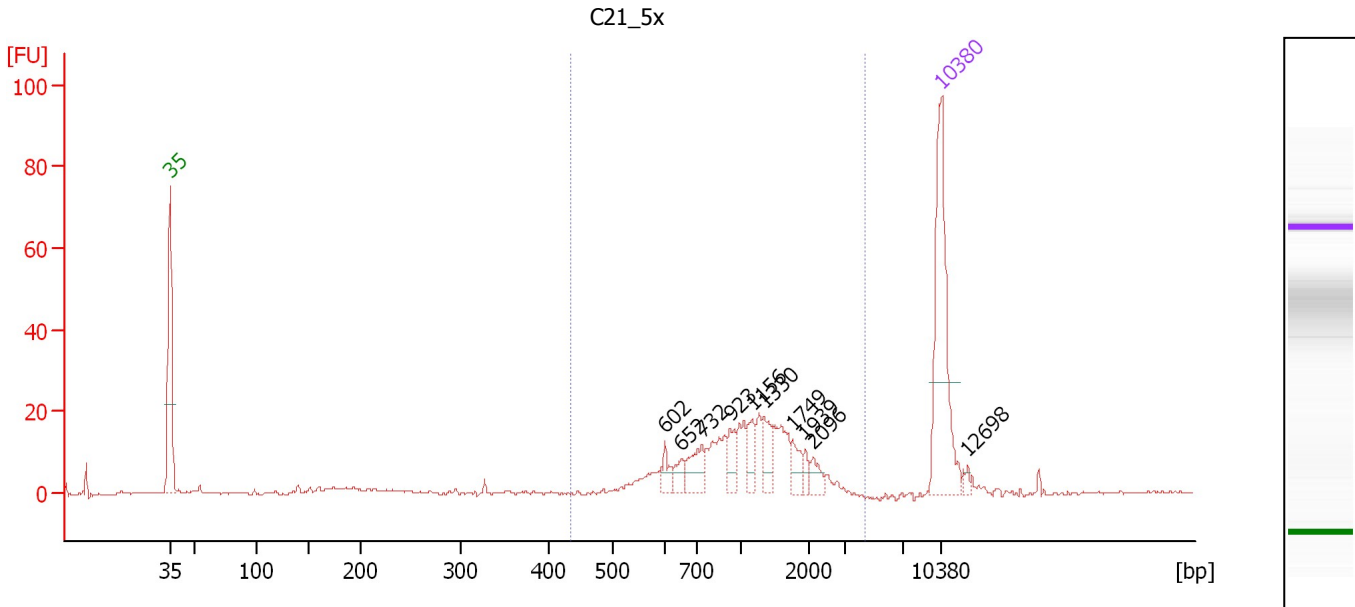
Region table for sample 3 : C20_5x

From [bp]	To [bp]	Average Size [bp]	Molarity [pmol/l]	Conc. [pg/μl]	Corr. Area	% of Total	Size distribution in CV [%]	Color
405	2,459	856	142.5	63.43	69.7	40	49.9	Blue

Assay Class: High Sensitivity DNA Assay
 Data Path: C:\...ents and Settings\Bioanalyzer\2012-07-27\2012-07-27_003.xad

Created: 7/27/2012 1:09:42 PM
 Modified: 7/27/2012 1:55:12 PM

Electropherogram Summary Continued ...



Overall Results for sample 4 : C21_5x

Number of peaks found: 10 Corr. Area 1: 217.1
 Noise: 0.3

Peak table for sample 4 : C21_5x

Peak	Size [bp]	Conc. [pg/μl]	Molarity [pmol/l]	Observations
1	35	125.00	5,411.3	Lower Marker
2	602	8.05	20.3	
3	652	9.10	21.1	
4	732	18.35	38.0	
5	923	11.90	19.5	
6	1,156	12.03	15.8	
7	1,330	13.30	15.2	
8	1,749	9.17	7.9	
9	1,939	4.59	3.6	
10	2,096	7.20	5.2	
11	10,380	75.00	10.9	Upper Marker
12	12,698	0.00	0.0	

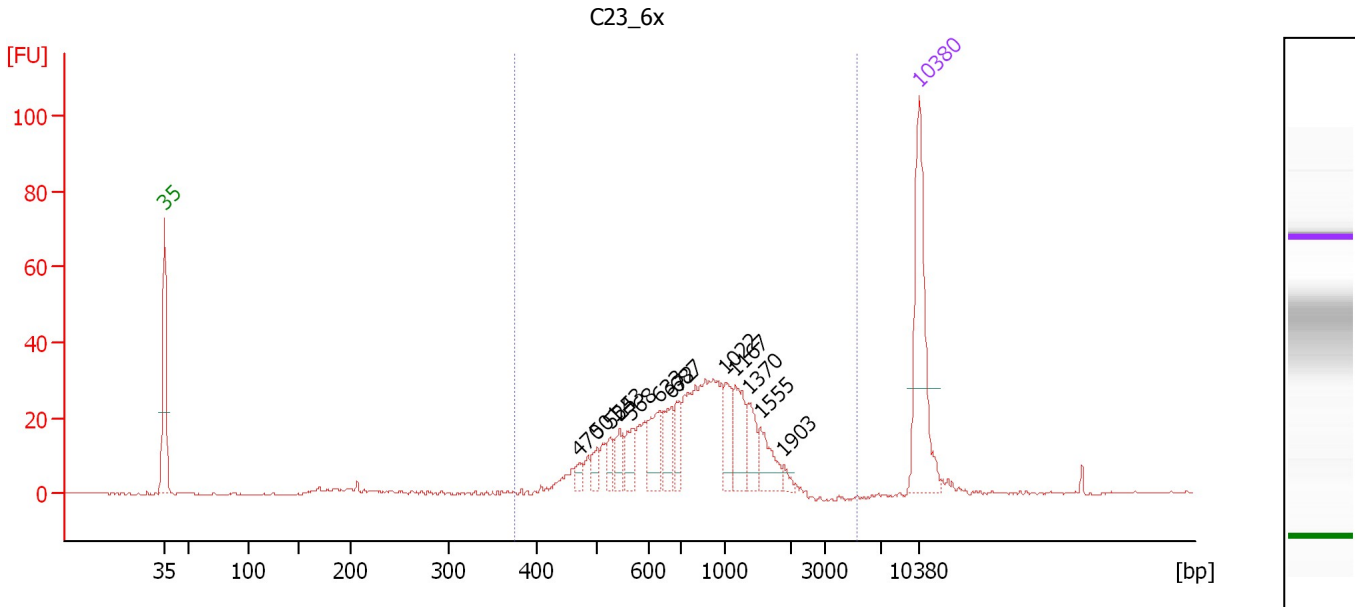
Region table for sample 4 : C21_5x

From [bp]	To [bp]	Average Size [bp]	Molarity [pmol/l]	Conc. [pg/μl]	Corr. Area	% of Total	Size distribution in CV [%]	Color
434	4,394	1,189	292.9	186.24	217.1	81	43.6	Blue

Assay Class: High Sensitivity DNA Assay
 Data Path: C:\...ents and Settings\Bioanalyzer\2012-07-27\2012-07-27_003.xad

Created: 7/27/2012 1:09:42 PM
 Modified: 7/27/2012 1:55:12 PM

Electropherogram Summary Continued ...



Overall Results for sample 5 : C23_6x

Number of peaks found: 13 Corr. Area 1: 433.6
 Noise: 0.1

Peak table for sample 5 : C23_6x

Peak	Size [bp]	Conc. [pg/μl]	Molarity [pmol/l]	Observations
1	35	125.00	5,411.3	Lower Marker
2	470	5.77	18.6	
3	501	9.80	29.6	
4	525	11.27	32.5	
5	543	13.27	37.0	
6	568	16.94	45.2	
7	633	27.71	66.3	
8	672	23.27	52.4	
9	687	16.36	36.1	
10	1,022	21.62	32.1	
11	1,167	28.86	37.5	
12	1,370	18.44	20.4	
13	1,555	21.26	20.7	
14	1,903	3.70	2.9	
15	10,380	75.00	10.9	Upper Marker

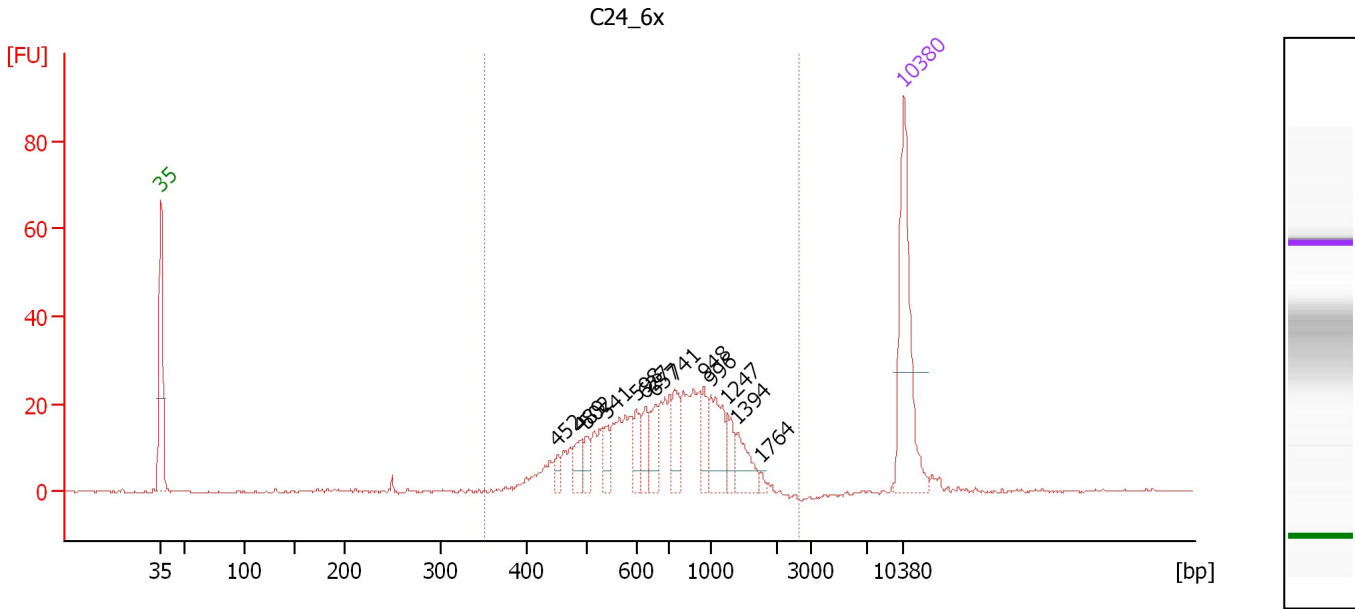
Region table for sample 5 : C23_6x

From [bp]	To [bp]	Average Size [bp]	Molarity [pmol/l]	Conc. [pg/μl]	Corr. Area	% of Total	Size distribution in CV [%]	Color
376	5,311	887	805.5	394.05	433.6	97	41.5	Blue

Assay Class: High Sensitivity DNA Assay
 Data Path: C:\...ents and Settings\Bioanalyzer\2012-07-27\2012-07-27_003.xad

Created: 7/27/2012 1:09:42 PM
 Modified: 7/27/2012 1:55:12 PM

Electropherogram Summary Continued ...



Overall Results for sample 6 : C24_6x

Number of peaks found: 13 Corr. Area 1: 369.6
 Noise: 0.2

Peak table for sample 6 : C24_6x

Peak	Size [bp]	Conc. [pg/μl]	Molarity [pmol/l]	Observations
1	35	125.00	5,411.3	Lower Marker
2	452	7.35	24.6	
3	489	14.95	46.3	
4	502	11.00	33.2	
5	541	12.43	34.8	
6	598	13.95	35.3	
7	627	16.54	40.0	
8	657	18.37	42.4	
9	741	21.17	43.3	
10	948	15.37	24.6	
11	996	34.57	52.6	
12	1,247	13.77	16.7	
13	1,394	18.95	20.6	
14	1,764	2.14	1.8	
15	10,380	75.00	10.9	Upper Marker

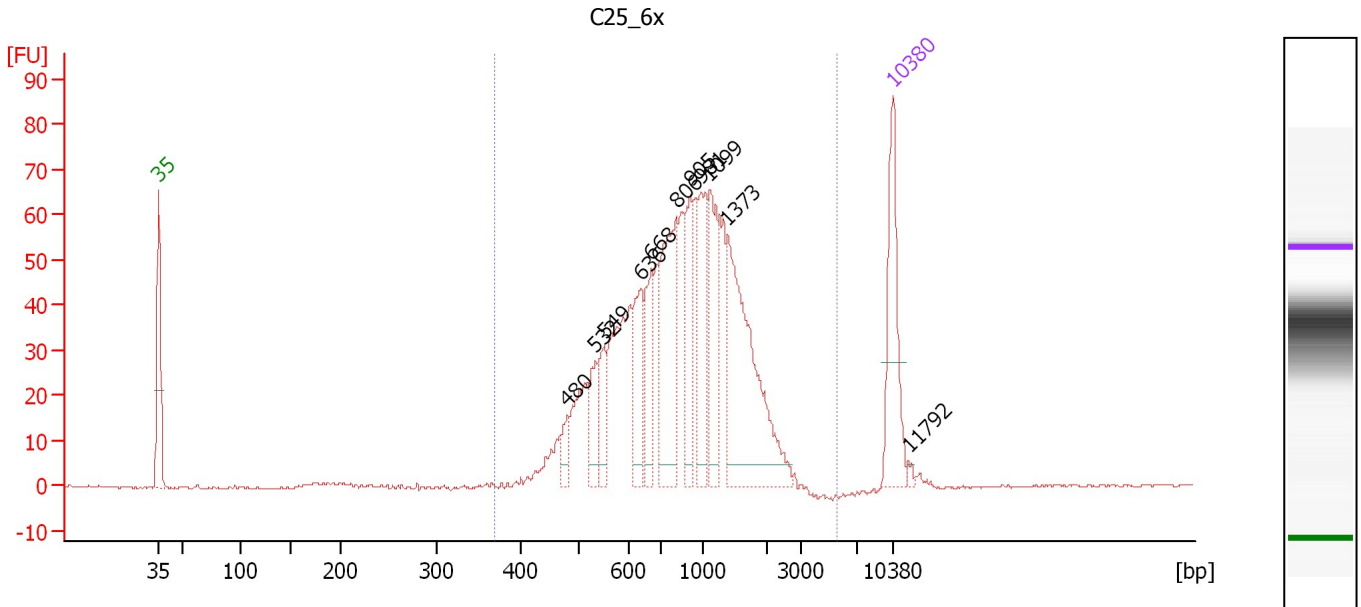
Region table for sample 6 : C24_6x

From [bp]	To [bp]	Average Size [bp]	Molarity [pmol/l]	Conc. [pg/μl]	Corr. Area	% of Total	Size distribution in CV [%]	Color
352	2,656	785	850.8	375.66	369.6	98	39.4	Blue

Assay Class: High Sensitivity DNA Assay
 Data Path: C:\...ents and Settings\Bioanalyzer\2012-07-27\2012-07-27_003.xad

Created: 7/27/2012 1:09:42 PM
 Modified: 7/27/2012 1:55:12 PM

Electropherogram Summary Continued ...



Overall Results for sample 7 : C25_6x

Number of peaks found: 11 Corr. Area 1: 949.9
 Noise: 0.2

Peak table for sample 7 : C25_6x

Peak	Size [bp]	Conc. [pg/μl]	Molarity [pmol/l]	Observations
1	35	125.00	5,411.3	Lower Marker
2	480	19.63	61.9	
3	532	36.31	103.4	
4	549	36.15	99.7	
5	636	62.42	148.6	
6	668	58.11	131.8	
7	806	127.85	240.3	
8	905	66.62	111.6	
9	981	77.61	119.9	
10	1,099	80.03	110.4	
11	1,373	176.37	194.6	
12	10,380	75.00	10.9	Upper Marker
13	11,792	0.00	0.0	

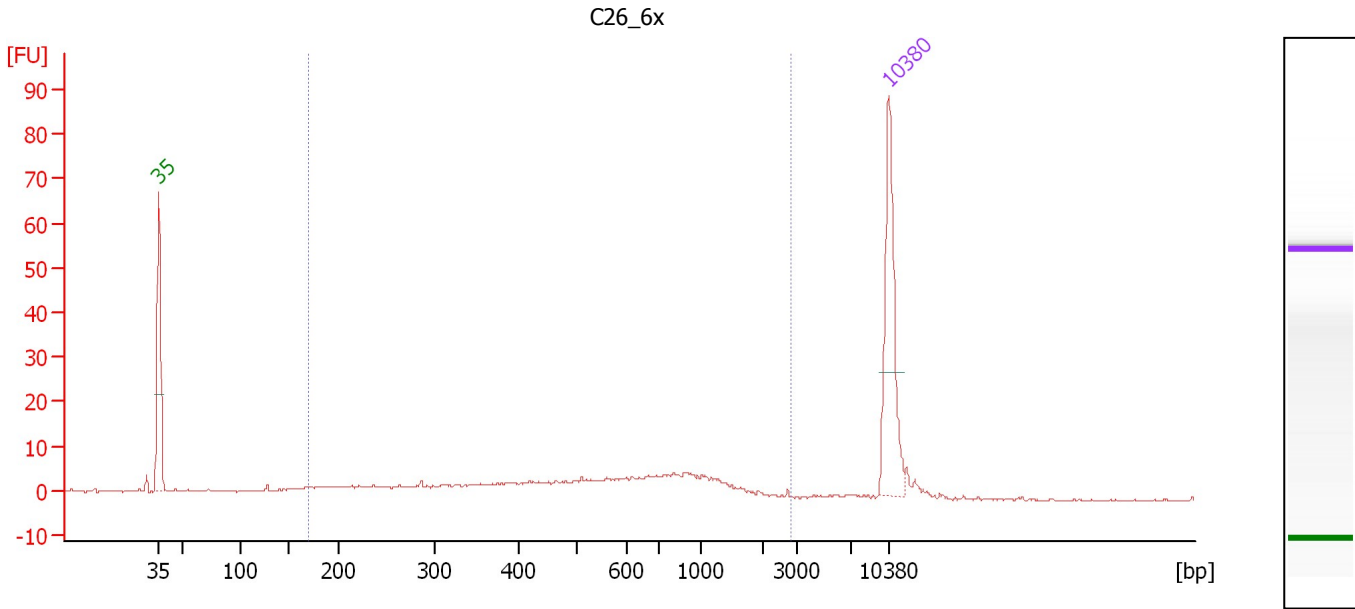
Region table for sample 7 : C25_6x

From [bp]	To [bp]	Average Size [bp]	Molarity [pmol/l]	Conc. [pg/μl]	Corr. Area	% of Total	Size distribution in CV [%]	Color
370	5,687	965	2,123.8	1,094.41	949.9	99	45.5	Blue

Assay Class: High Sensitivity DNA Assay
 Data Path: C:\...ents and Settings\Bioanalyzer\2012-07-27\2012-07-27_003.xad

Created: 7/27/2012 1:09:42 PM
 Modified: 7/27/2012 1:55:12 PM

Electropherogram Summary Continued ...



Overall Results for sample 8 : C26_6x

Number of peaks found: 0 Corr. Area 1: 150.9
 Noise: 0.2

Peak table for sample 8 : C26_6x

Peak	Size [bp]	Conc. [pg/μl]	Molarity [pmol/l]	Observations
1	35	125.00	5,411.3	Lower Marker
2	10,380	75.00	10.9	Upper Marker

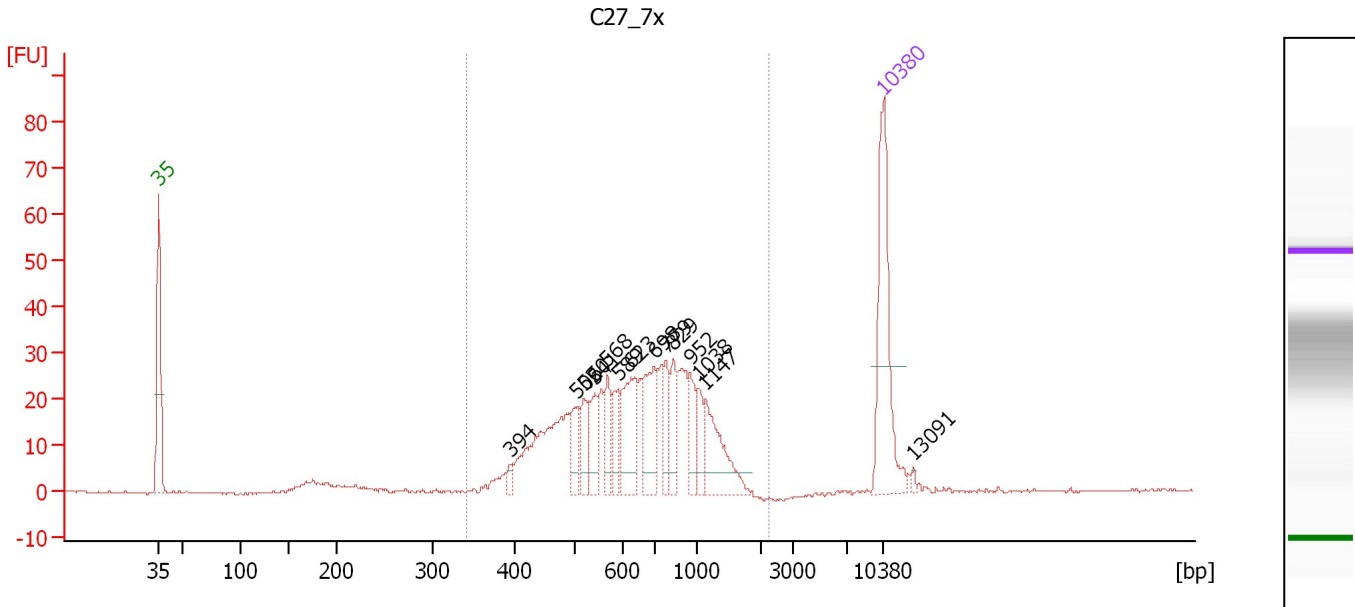
Region table for sample 8 : C26_6x

From [bp]	To [bp]	Average Size [bp]	Molarity [pmol/l]	Conc. [pg/μl]	Corr. Area	% of Total	Size distribution in CV [%]	Color
169	2,812	638	730.6	193.64	150.9	83	63.4	Blue

Assay Class: High Sensitivity DNA Assay
 Data Path: C:\...ents and Settings\Bioanalyzer\2012-07-27\2012-07-27_003.xad

Created: 7/27/2012 1:09:42 PM
 Modified: 7/27/2012 1:55:12 PM

Electropherogram Summary Continued ...



Overall Results for sample 9 : C27_7x

Number of peaks found: 14 Corr. Area 1: 473.7
 Noise: 0.2

Peak table for sample 9 : C27_7x

Peak	Size [bp]	Conc. [pg/μl]	Molarity [pmol/l]	Observations
1	35	125.00	5,411.3	Lower Marker
2	394	6.14	23.6	
3	506	23.68	70.9	
4	520	18.08	52.6	
5	541	25.42	71.2	
6	568	19.75	52.7	
7	589	19.65	50.6	
8	623	47.87	116.4	
9	698	44.40	96.4	
10	779	21.45	41.7	
11	829	22.28	40.7	
12	952	19.86	31.6	
13	1,038	15.87	23.2	
14	1,147	42.61	56.3	
15	10,380	75.00	10.9	Upper Marker
16	13,091	0.00	0.0	

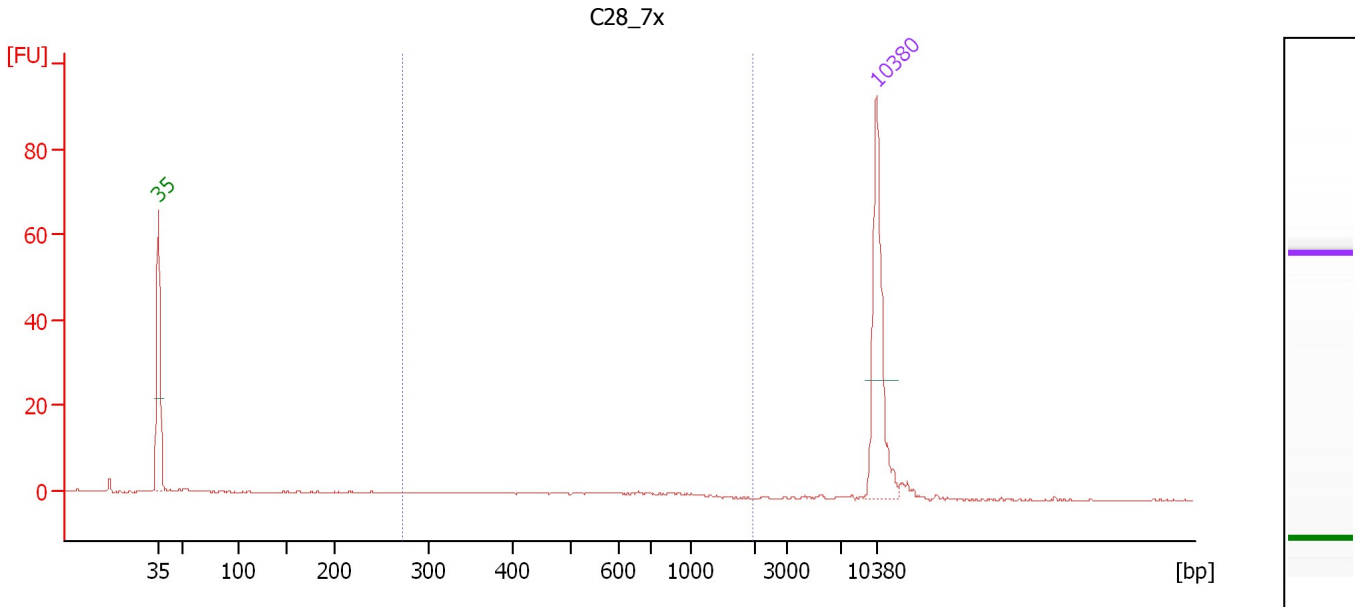
Region table for sample 9 : C27_7x

From [bp]	To [bp]	Average Size [bp]	Molarity [pmol/l]	Conc. [pg/μl]	Corr. Area	% of Total	Size distribution in CV [%]	Color
342	2,292	717	1,224.6	501.10	473.7	95	37.4	Blue

Assay Class: High Sensitivity DNA Assay
 Data Path: C:\...ents and Settings\Bioanalyzer\2012-07-27\2012-07-27_003.xad

Created: 7/27/2012 1:09:42 PM
 Modified: 7/27/2012 1:55:12 PM

Electropherogram Summary Continued ...



Overall Results for sample 10 : C28_7x

Number of peaks found: 0 Corr. Area 1: 16.5
 Noise: 0.1

Peak table for sample 10 : C28_7x

Peak	Size [bp]	Conc. [pg/μl]	Molarity [pmol/l]	Observations
1	35	125.00	5,411.3	Lower Marker
2	10,380	75.00	10.9	Upper Marker

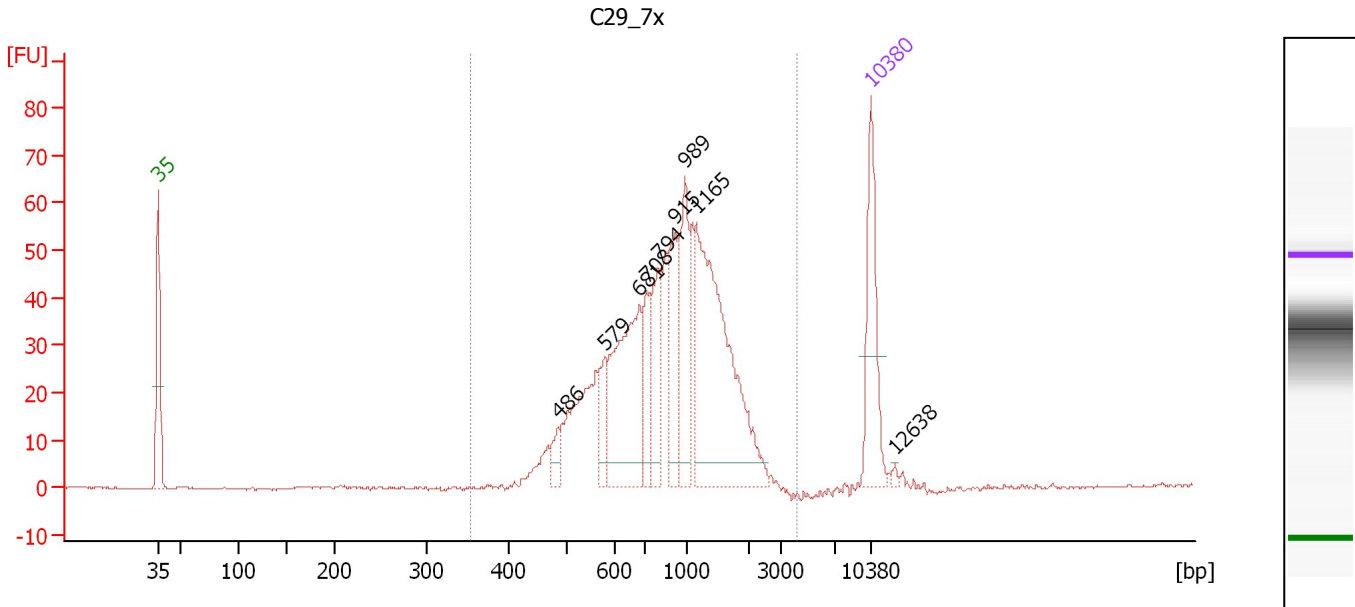
Region table for sample 10 : C28_7x

From [bp]	To [bp]	Average Size [bp]	Molarity [pmol/l]	Conc. [pg/μl]	Corr. Area	% of Total	Size distribution in CV [%]	Color
272	1,992	584	62.4	19.73	16.5	49	39.9	Blue

Assay Class: High Sensitivity DNA Assay
 Data Path: C:\...ents and Settings\Bioanalyzer\2012-07-27\2012-07-27_003.xad

Created: 7/27/2012 1:09:42 PM
 Modified: 7/27/2012 1:55:12 PM

Electropherogram Summary Continued ...



Overall Results for sample 11 : C29_7x

Number of peaks found: 9 Corr. Area 1: 744.7
 Noise: 0.2

Peak table for sample 11 : C29_7x

Peak	Size [bp]	Conc. [pg/μl]	Molarity [pmol/l]	Observations
1	35	125.00	5,411.3	Lower Marker
2	486	16.52	51.6	
3	579	31.22	81.7	
4	681	165.78	368.8	
5	708	40.41	86.5	
6	794	71.06	135.6	
7	915	71.34	118.1	
8	989	80.17	122.8	
9	1,165	254.68	331.2	
10	10,380	75.00	10.9	Upper Marker
11	12,638	0.00	0.0	

Region table for sample 11 : C29_7x

From [bp]	To [bp]	Average Size [bp]	Molarity [pmol/l]	Conc. [pg/μl]	Corr. Area	% of Total	Size distribution in CV [%]	Color
353	4,237	984	1,756.8	929.35	744.7	99	44.0	Blue

Assay Class: High Sensitivity DNA Assay
Data Path: C:\...ents and Settings\Bioanalyzer\2012-07-27\2012-07-27_003.xad

Created: 7/27/2012 1:09:42 PM
Modified: 7/27/2012 1:55:12 PM

Gel Image

