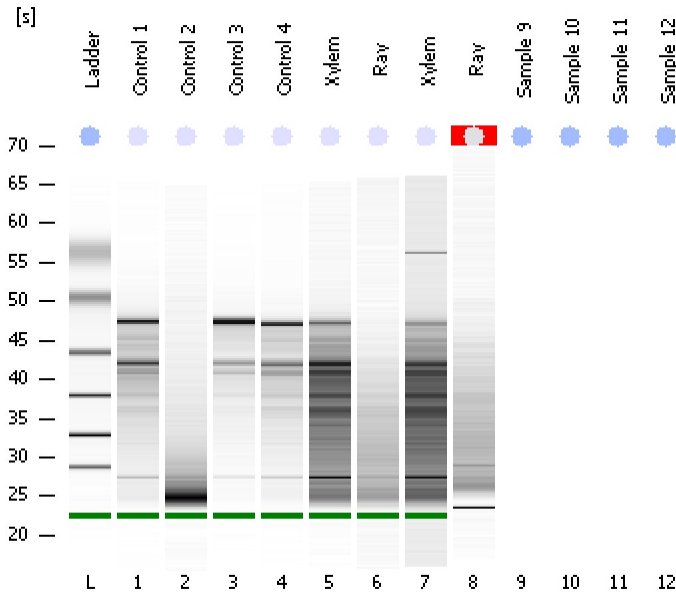


Assay Class: Eukaryote Total RNA Nano
 Data Path: C:\...ents and Settings\Bioanalyzer\2012-07-27\2012-07-27_004.xad

Created: 7/27/2012 2:46:09 PM
 Modified: 7/27/2012 3:08:58 PM

Electrophoresis File Run Summary



Instrument Information:

Instrument Name: DE13701086 Firmware: C.01.069
 Serial#: DE13701086 Type: G2938B

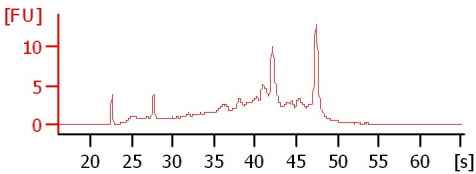
Assay Information:

Assay Origin Path: C:\Program Files\Agilent\2100 bioanalyzer\2100 expert\assays\RNA\Eukaryote Total RNA Nano Series II.xsy
 Assay Class: Eukaryote Total RNA Nano
 Version: 2.6
 Assay Comments: Total RNA Analysis ng sensitivity (Eukaryote)
 © Copyright 2003 - 2009 Agilent Technologies, Inc.

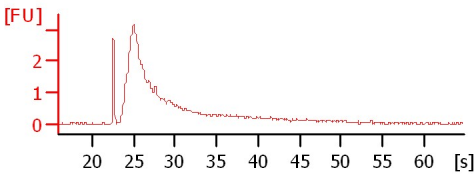
Chip Information:

Chip Lot #:
 Reagent Kit Lot #:
 Chip Comments:

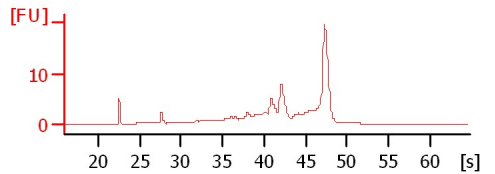
Control 1
 RIN: 5.50



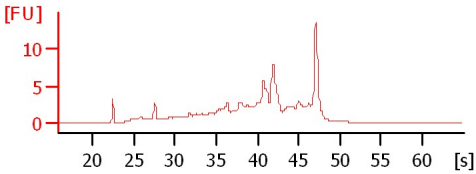
Control 2
 RIN: 2.40



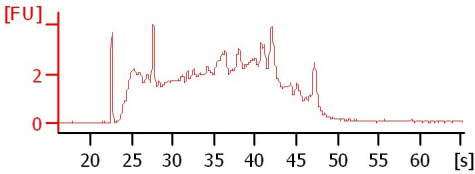
Control 3
 RIN: 7.70



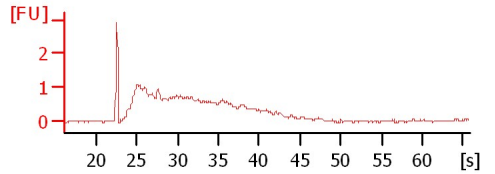
Control 4
 RIN: 6.20



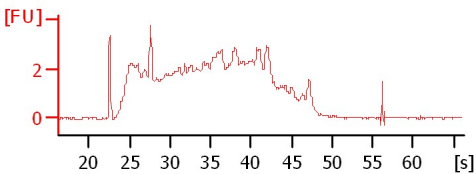
Xylem
 RIN: 3.40



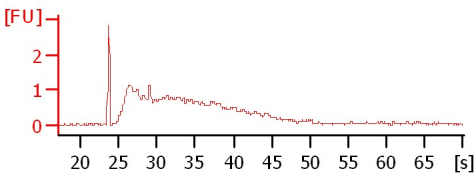
Ray
 RIN: 2.30



Xylem
 RIN: 3



Ray
 RIN N/A



Assay Class: Eukaryote Total RNA Nano
 Data Path: C:\...ents and Settings\Bioanalyzer\2012-07-27\2012-07-27_004.xad

Created: 7/27/2012 2:46:09 PM
 Modified: 7/27/2012 3:08:58 PM

Electrophoresis File Run Summary (Chip Summary)

Sample Name	Sample Comment	Status	Result Label	Result Color
Control 1		✓	RIN: 5.50	
Control 2		✓	RIN: 2.40	
Control 3		✓	RIN: 7.70	
Control 4		✓	RIN: 6.20	
Xylem		✓	RIN: 3.40	
Ray		✓	RIN: 2.30	
Xylem		✓	RIN:3	
Ray		✓	RIN N/A	
Sample 9				
Sample 10				
Sample 11				
Sample 12				
Ladder		✓	All Other Samples	

Chip Lot #

Reagent Kit Lot #

Chip Comments :

Assay Class: Eukaryote Total RNA Nano
Data Path: C:\...ents and Settings\Bioanalyzer\2012-07-27\2012-07-27_004.xad

Created: 7/27/2012 2:46:09 PM
Modified: 7/27/2012 3:08:58 PM

Electrophoresis Assay Details

General Analysis Settings

Number of Available Sample and Ladder Wells (Max.) : 13
Minimum Visible Range [s] : 17
Maximum Visible Range [s] : 70
Start Analysis Time Range [s] : 19
End Analysis Time Range [s] : 69
Ladder Concentration [ng/μl] : 150
Lower Marker Concentration [ng/μl] : 0
Upper Marker Concentration [ng/μl] : 0
Used Lower Marker for Quantitation
Standard Curve Fit is Logarithmic
Show Data Aligned to Lower Marker

Integrator Settings

Integration Start Time [s] : 19
Integration End Time [s] : 69
Slope Threshold : 0.6
Height Threshold [FU] : 0.5
Area Threshold : 0.2
Width Threshold [s] : 0.5
Baseline Plateau [s] : 6

Filter Settings

Filter Width [s] : 0.5
Polynomial Order : 4

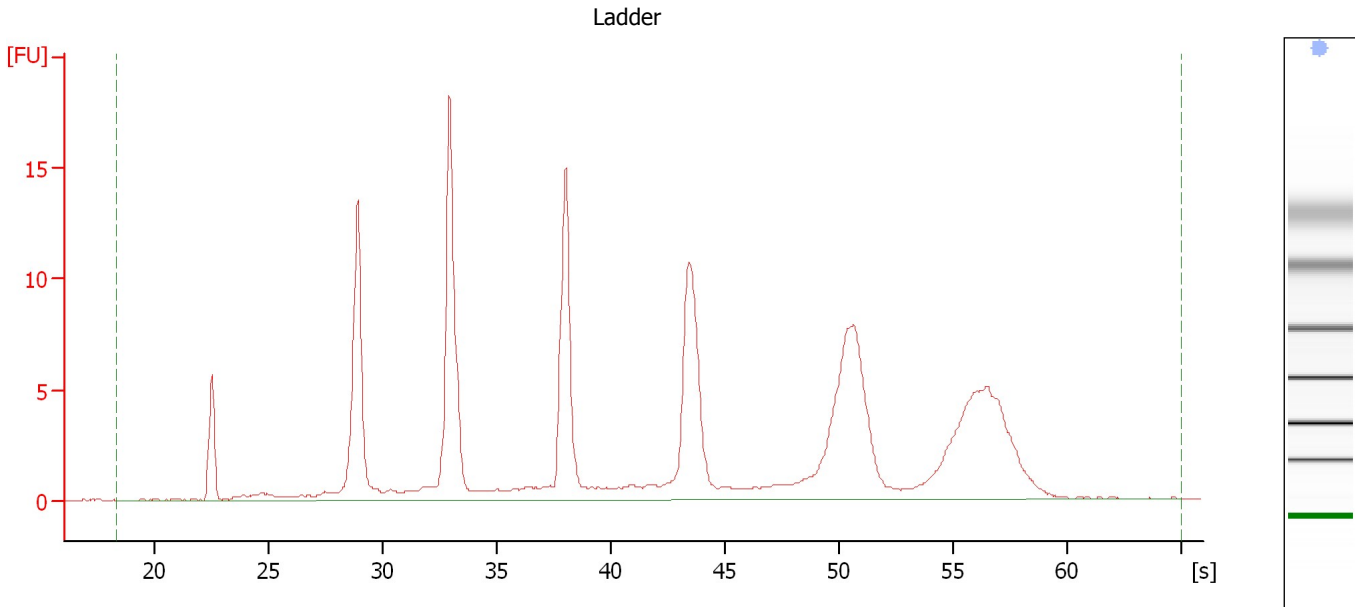
Ladder

Ladder Peak	Size
1	25
2	200
3	500
4	1000
5	2000
6	4000

Assay Class: Eukaryote Total RNA Nano
Data Path: C:\...ents and Settings\Bioanalyzer\2012-07-27\2012-07-27_004.xad

Created: 7/27/2012 2:46:09 PM
Modified: 7/27/2012 3:08:58 PM

Electropherogram Summary



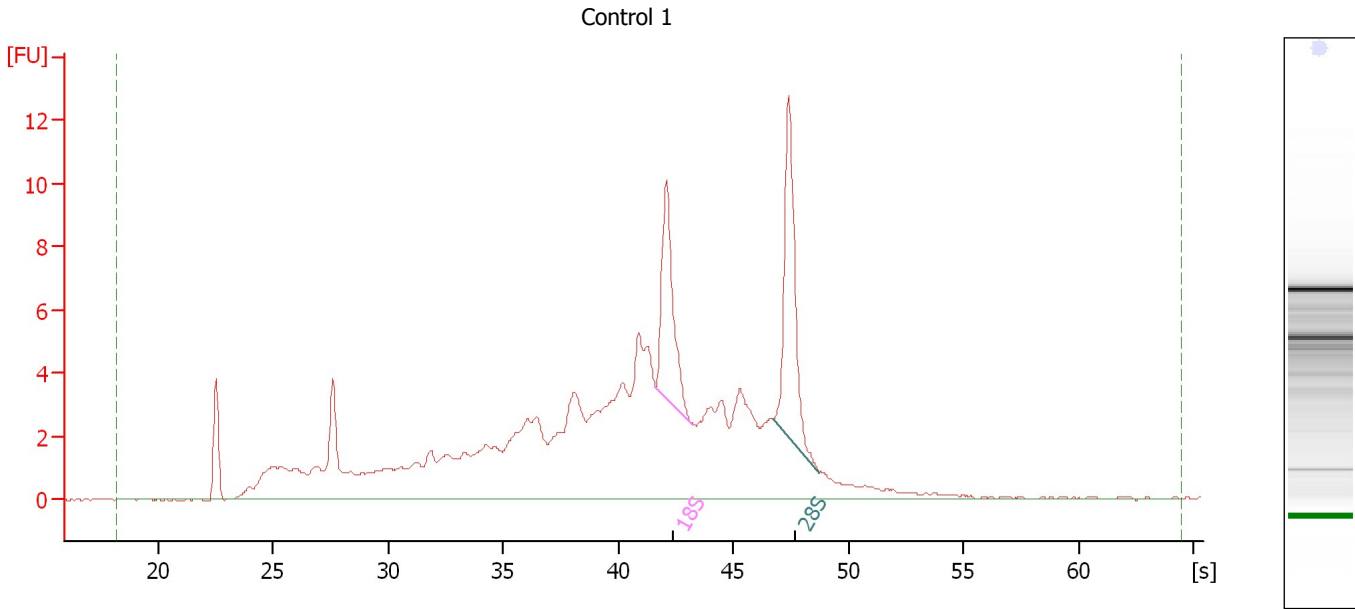
Overall Results for Ladder

RNA Area:	161.0	Result Flagging Color:	
RNA Concentration:	150 ng/μl	Result Flagging Label:	All Other Samples

Assay Class: Eukaryote Total RNA Nano
Data Path: C:\...ents and Settings\Bioanalyzer\2012-07-27\2012-07-27_004.xad

Created: 7/27/2012 2:46:09 PM
Modified: 7/27/2012 3:08:58 PM

Electropherogram Summary Continued ...



Overall Results for sample 1 : Control 1

RNA Area: 156.7 RNA Integrity Number (RIN): 5.5 (B.02.08)
RNA Concentration: 146 ng/μl Result Flagging Color:
rRNA Ratio [28s / 18s]: 1.3 Result Flagging Label: RIN: 5.50

Fragment table for sample 1 : Control 1

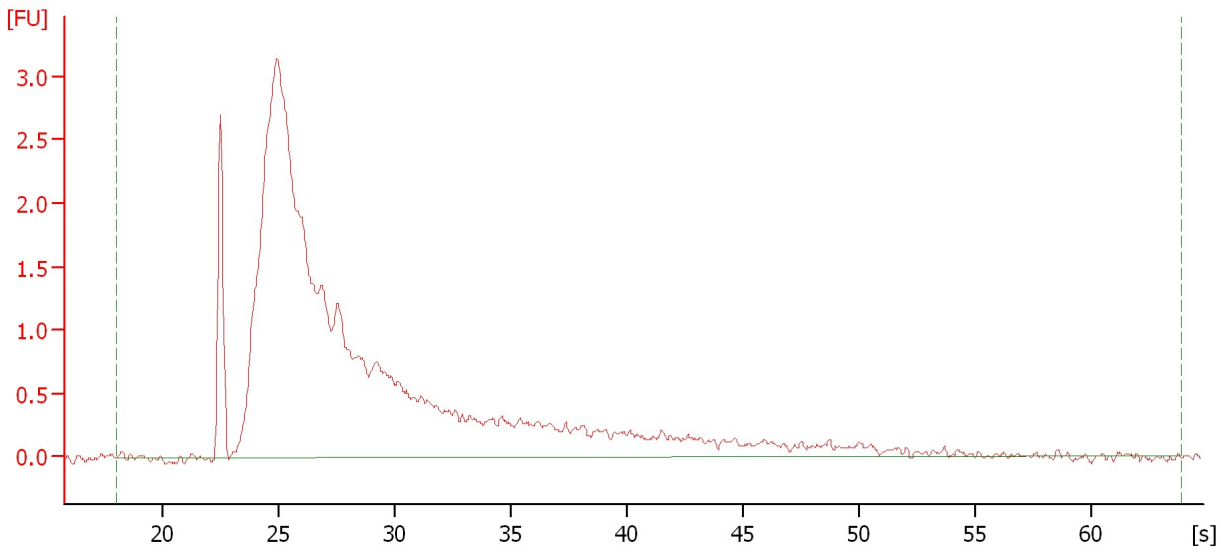
Name	Start Size [nt]	End Size [nt]	Area	% of total Area
18S	1,657	1,959	9.0	5.7
28S	2,923	3,487	11.8	7.6

Assay Class: Eukaryote Total RNA Nano
Data Path: C:\...ents and Settings\Bioanalyzer\2012-07-27\2012-07-27_004.xad

Created: 7/27/2012 2:46:09 PM
Modified: 7/27/2012 3:08:58 PM

Electropherogram Summary Continued ...

Control 2



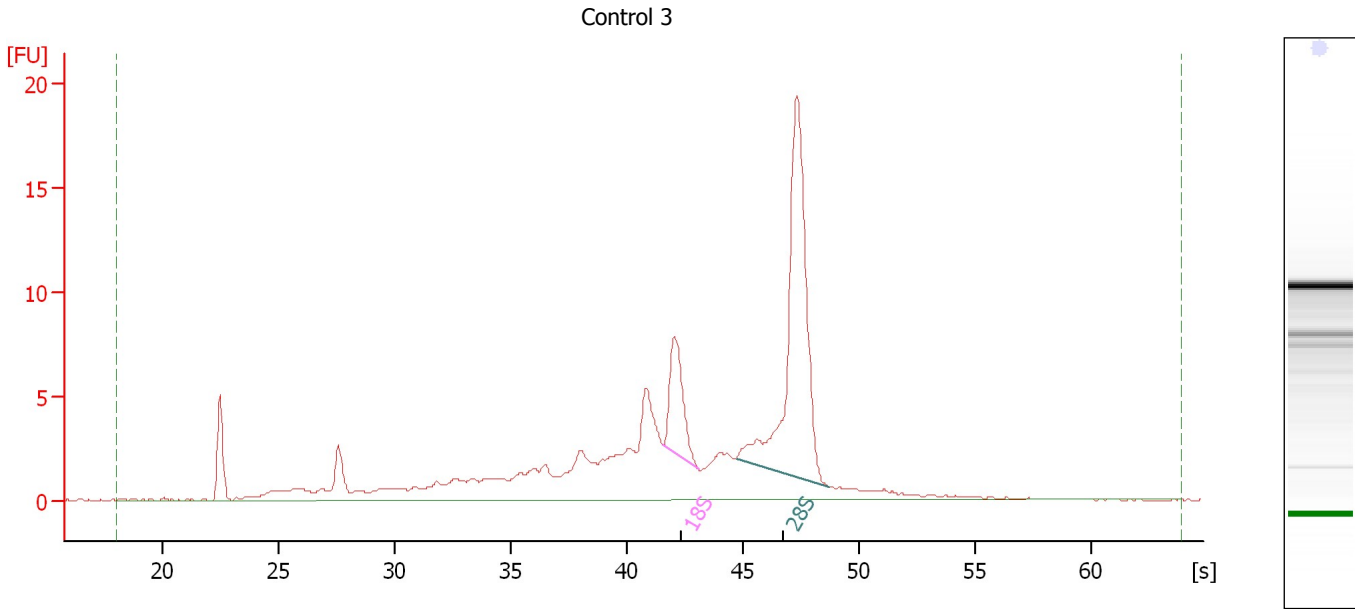
Overall Results for sample 2 : Control 2

RNA Area:	48.1	RNA Integrity Number (RIN):	2.4 (B.02.08)
RNA Concentration:	45 ng/μl	Result Flagging Color:	
rRNA Ratio [28s / 18s]:	0.0	Result Flagging Label:	RIN: 2.40

Assay Class: Eukaryote Total RNA Nano
 Data Path: C:\...ents and Settings\Bioanalyzer\2012-07-27\2012-07-27_004.xad

Created: 7/27/2012 2:46:09 PM
 Modified: 7/27/2012 3:08:58 PM

Electropherogram Summary Continued ...



Overall Results for sample 3 : Control 3

RNA Area:	133.6	RNA Integrity Number (RIN):	7.7 (B.02.08, Anomaly Threshold(s) manually adapted)
RNA Concentration:	124 ng/μl	Result Flagging Color:	
rRNA Ratio [28s / 18s]:	4.0	Result Flagging Label:	RIN: 7.70

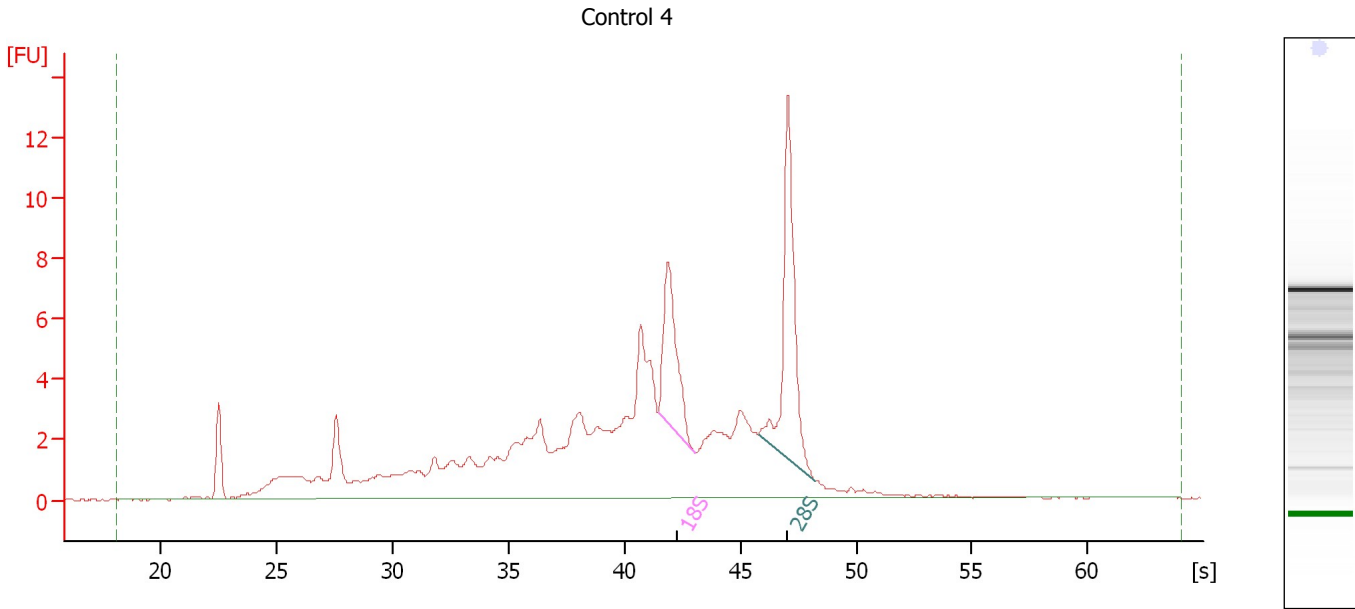
Fragment table for sample 3 : Control 3

Name	Start Size [nt]	End Size [nt]	Area	% of total Area
18S	1,654	1,936	8.8	6.6
28S	2,358	3,479	35.4	26.5

Assay Class: Eukaryote Total RNA Nano
 Data Path: C:\...ents and Settings\Bioanalyzer\2012-07-27\2012-07-27_004.xad

Created: 7/27/2012 2:46:09 PM
 Modified: 7/27/2012 3:08:58 PM

Electropherogram Summary Continued ...



Overall Results for sample 4 : Control 4

RNA Area:	129.5	RNA Integrity Number (RIN):	6.2 (B.02.08)
RNA Concentration:	121 ng/μl	Result Flagging Color:	
rRNA Ratio [28s / 18s]:	1.6	Result Flagging Label:	RIN: 6.20

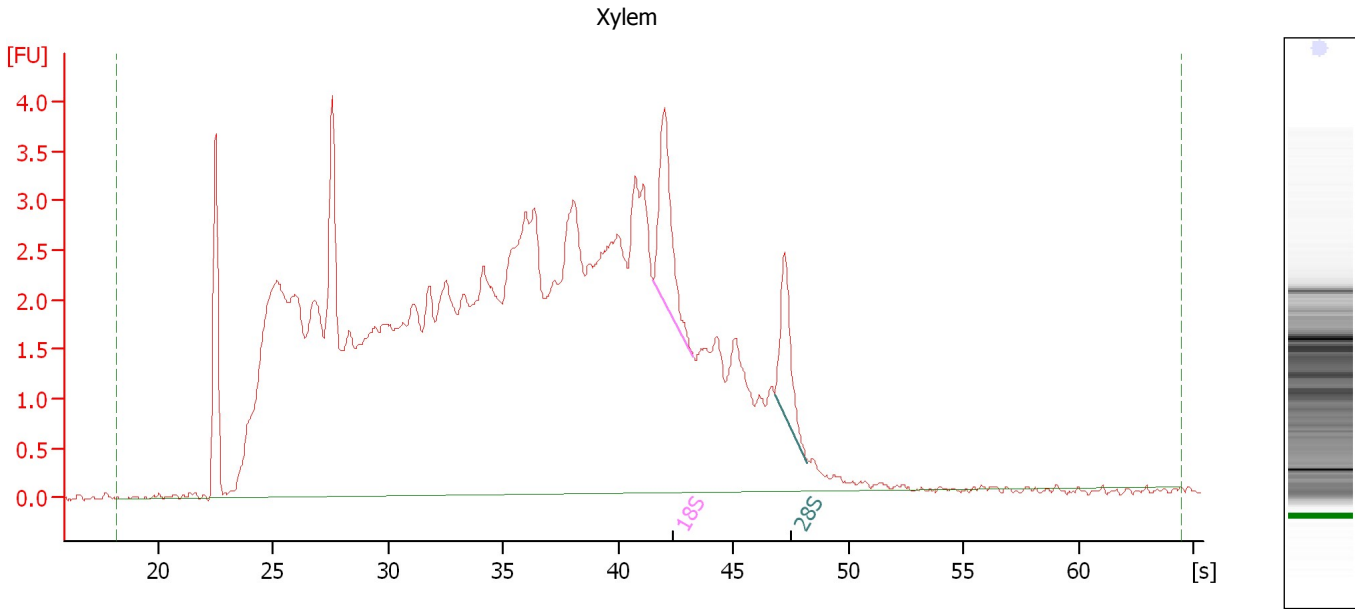
Fragment table for sample 4 : Control 4

Name	Start Size [nt]	End Size [nt]	Area	% of total Area
18S	1,635	1,918	8.4	6.5
28S	2,659	3,350	13.7	10.6

Assay Class: Eukaryote Total RNA Nano
Data Path: C:\...ents and Settings\Bioanalyzer\2012-07-27\2012-07-27_004.xad

Created: 7/27/2012 2:46:09 PM
Modified: 7/27/2012 3:08:58 PM

Electropherogram Summary Continued ...



Overall Results for sample 5 : Xylem

RNA Area: 138.8 RNA Integrity Number (RIN): 3.4 (B.02.08)
RNA Concentration: 129 ng/μl Result Flagging Color:
rRNA Ratio [28s / 18s]: 0.6 Result Flagging Label: RIN: 3.40

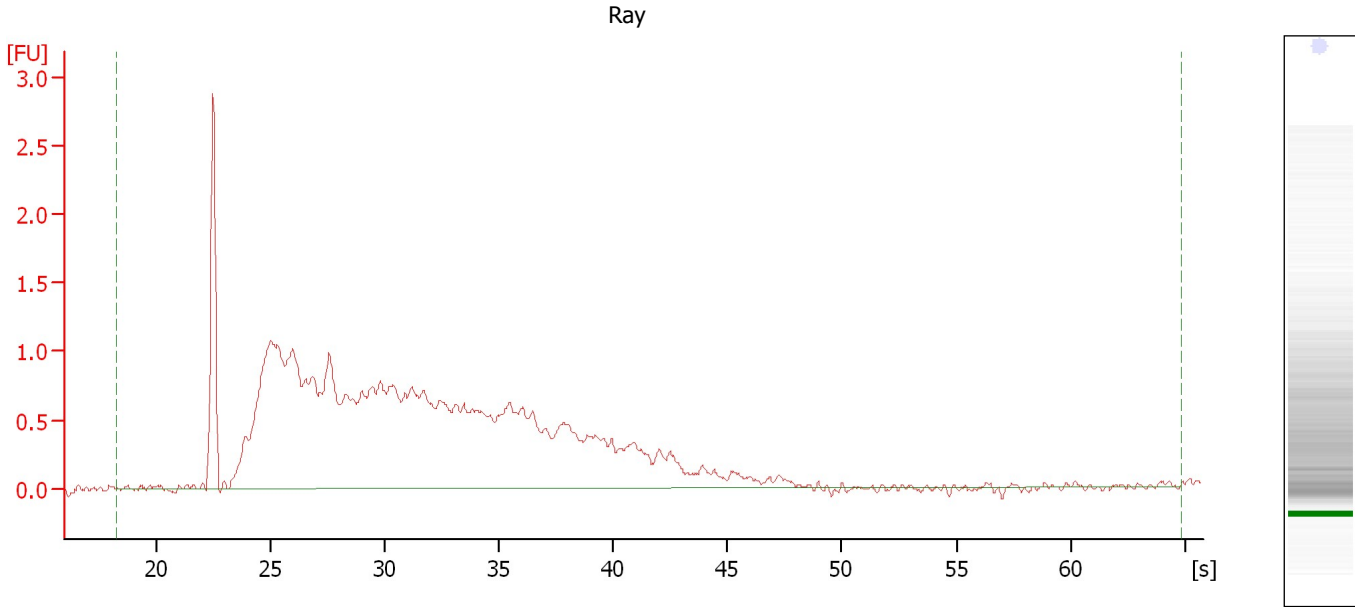
Fragment table for sample 5 : Xylem

Name	Start Size [nt]	End Size [nt]	Area	% of total Area
18S	1,640	1,959	2.8	2.0
28S	2,936	3,343	1.8	1.3

Assay Class: Eukaryote Total RNA Nano
Data Path: C:\...ents and Settings\Bioanalyzer\2012-07-27\2012-07-27_004.xad

Created: 7/27/2012 2:46:09 PM
Modified: 7/27/2012 3:08:58 PM

Electropherogram Summary Continued ...



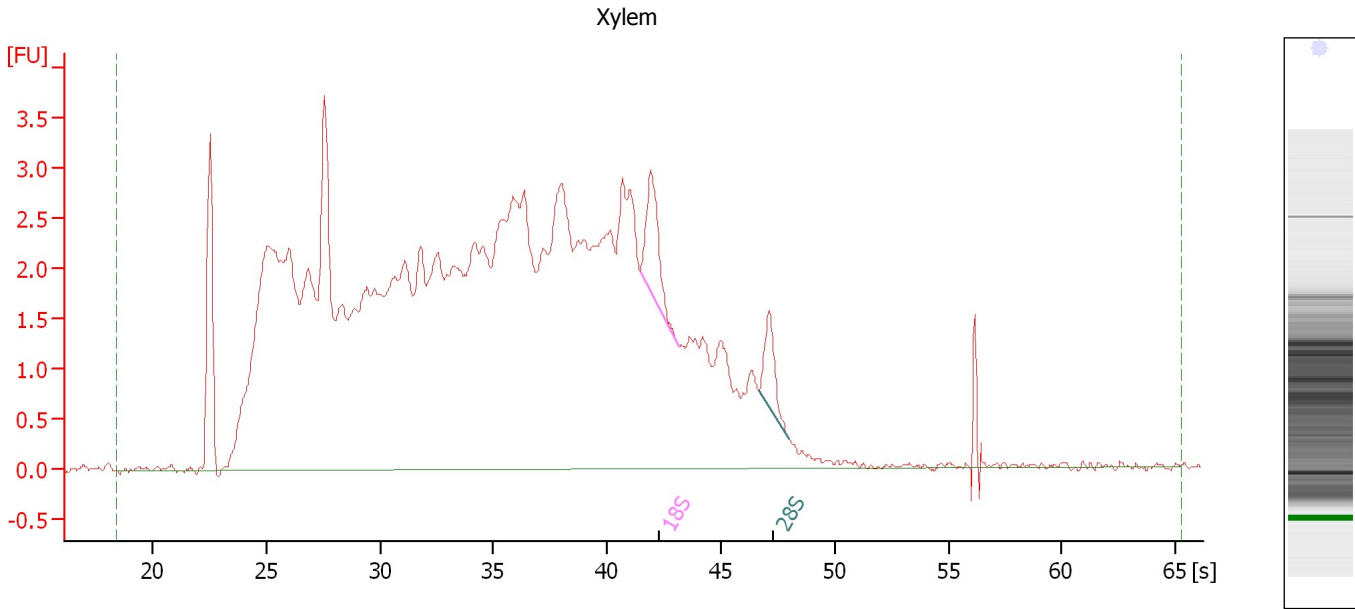
Overall Results for sample 6 : Ray

RNA Area:	36.1	RNA Integrity Number (RIN):	2.3 (B.02.08)
RNA Concentration:	34 ng/μl	Result Flagging Color:	
rRNA Ratio [28s / 18s]:	0.0	Result Flagging Label:	RIN: 2.30

Assay Class: Eukaryote Total RNA Nano
Data Path: C:\...ents and Settings\Bioanalyzer\2012-07-27\2012-07-27_004.xad

Created: 7/27/2012 2:46:09 PM
Modified: 7/27/2012 3:08:58 PM

Electropherogram Summary Continued ...



Overall Results for sample 7 : Xylem

RNA Area: 134.5 RNA Integrity Number (RIN): 3 (B.02.08)
RNA Concentration: 125 ng/μl Result Flagging Color:
rRNA Ratio [28s / 18s]: 0.6 Result Flagging Label: RIN:3

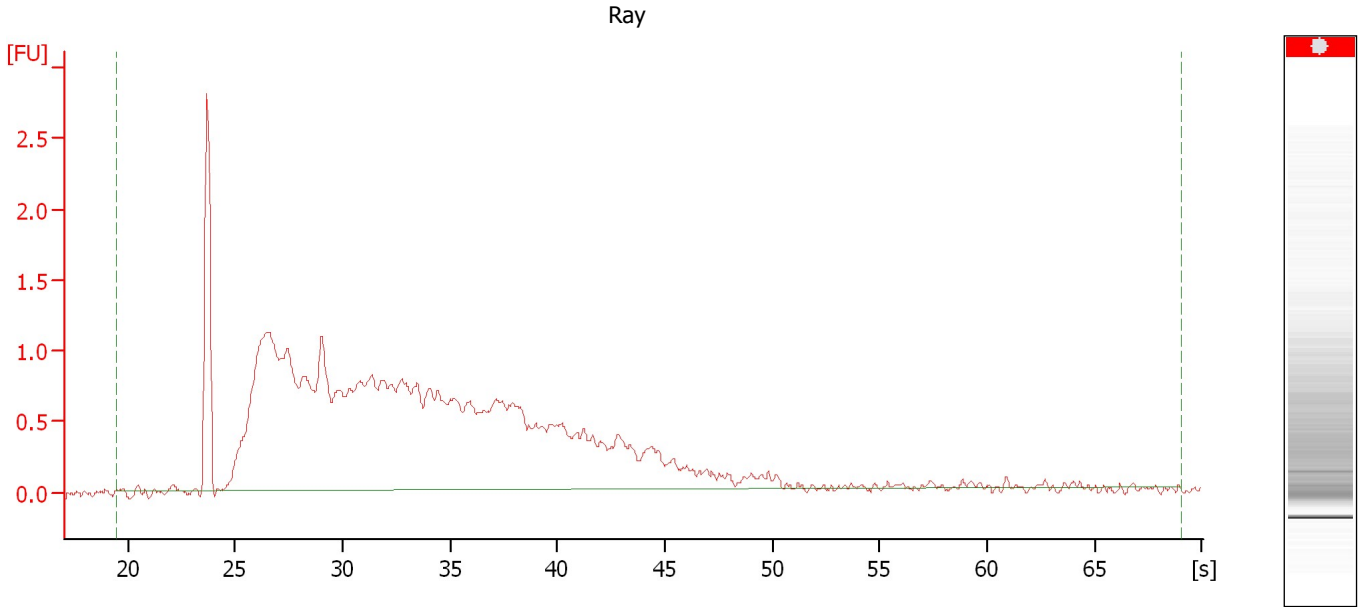
Fragment table for sample 7 : Xylem

Name	Start Size [nt]	End Size [nt]	Area	% of total Area
18S	1,632	1,946	1.8	1.3
28S	2,902	3,275	1.1	0.8

Assay Class: Eukaryote Total RNA Nano
Data Path: C:\...ents and Settings\Bioanalyzer\2012-07-27\2012-07-27_004.xad

Created: 7/27/2012 2:46:09 PM
Modified: 7/27/2012 3:08:58 PM

Electropherogram Summary Continued ...



Setpoint Deviations for sample 8 : Ray

Height Threshold [FU] : 2

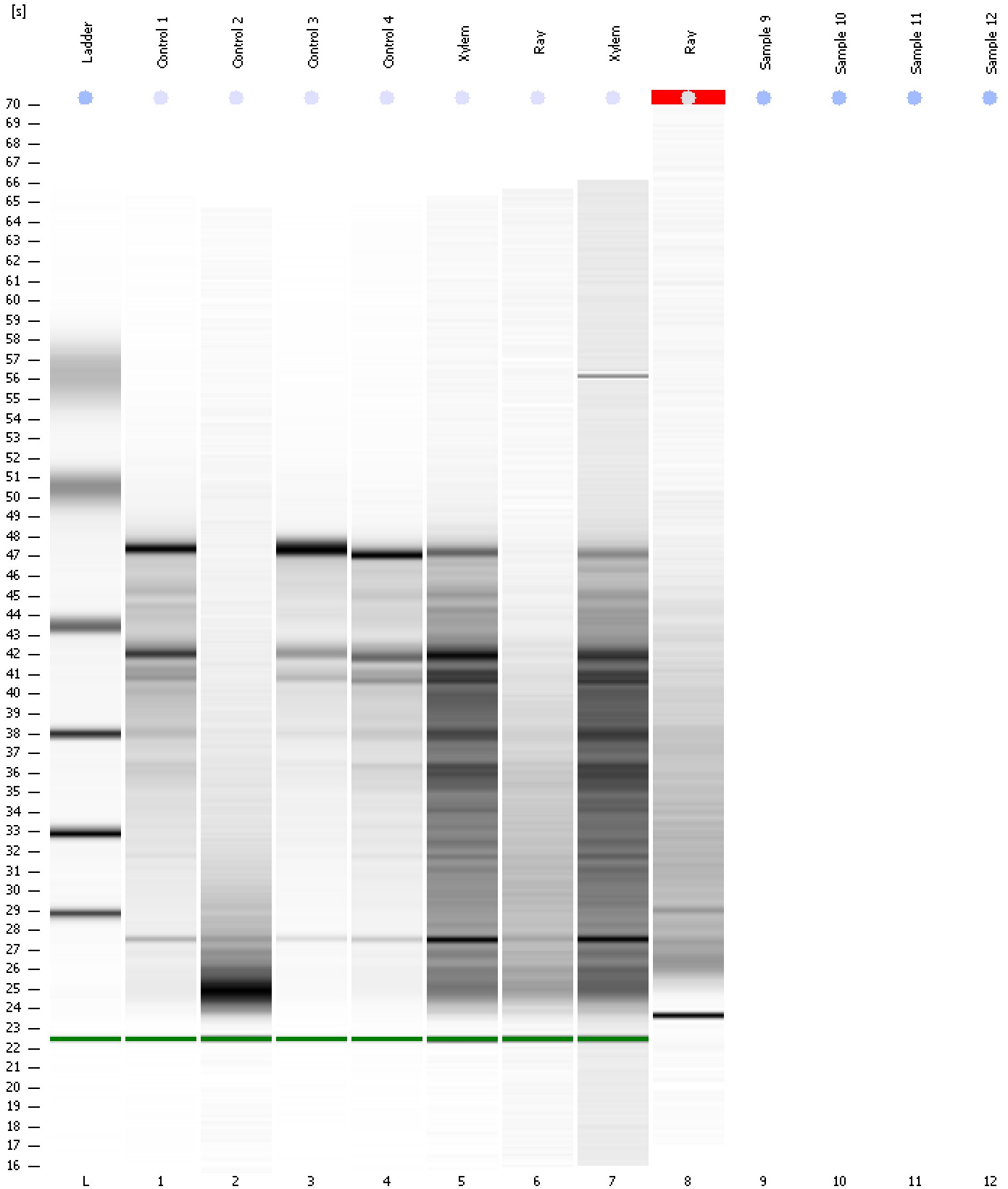
Overall Results for sample 8 : Ray

RNA Concentration:	39 ng/ μ l	Result Flagging Color:	
rRNA Ratio [28s / 18s]:	0.0	Result Flagging Label:	RIN N/A

Assay Class: Eukaryote Total RNA Nano
Data Path: C:\...ents and Settings\Bioanalyzer\2012-07-27\2012-07-27_004.xad

Created: 7/27/2012 2:46:09 PM
Modified: 7/27/2012 3:08:58 PM

Gel Image



Assay Class: Eukaryote Total RNA Nano
Data Path: C:\...ents and Settings\Bioanalyzer\2012-07-27\2012-07-27_004.xad

Created: 7/27/2012 2:46:09 PM
Modified: 7/27/2012 3:08:58 PM

Invalid Samples

Sample 9 has not been run, no results available.

Sample 10 has not been run, no results available.

Sample 11 has not been run, no results available.

Sample 12 has not been run, no results available.