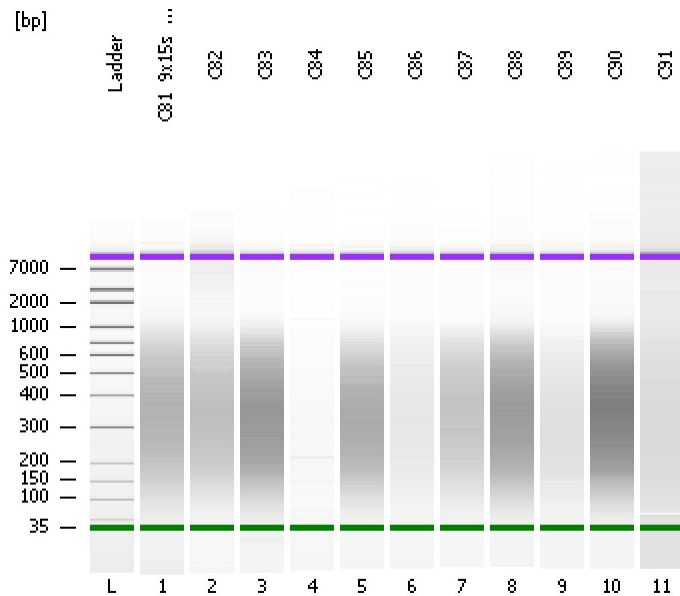


Assay Class: High Sensitivity DNA Assay
Data Path: C:\...ents and Settings\Bioanalyzer\2012-07-30\2012-07-30_002.xad

Created: 7/30/2012 12:47:39 PM
Modified: 7/30/2012 1:31:36 PM

Electrophoresis File Run Summary



Instrument Information:

Instrument Name: DE13701086 Firmware: C.01.069
Serial#: DE13701086 Type: G2938B

Assay Information:

Assay Origin Path: C:\Program Files\Agilent\2100 bioanalyzer\2100 expert\assays\dsDNA\High Sensitivity DNA.xsy
Assay Class: High Sensitivity DNA Assay
Version: 1.03
Assay Comments: Copyright © 2003-2010 Agilent Technologies

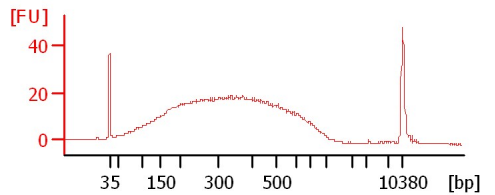
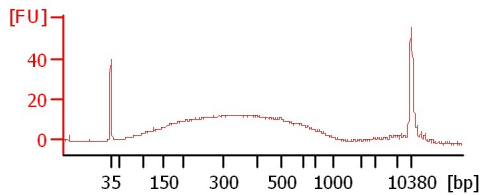
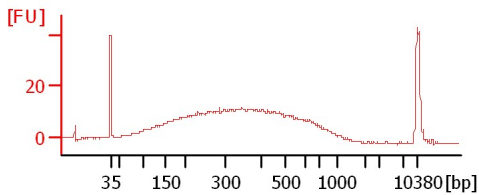
Chip Information:

Chip Lot #:
Reagent Kit Lot #:
Chip Comments:

C81_9x15s_90s_onOff

C82

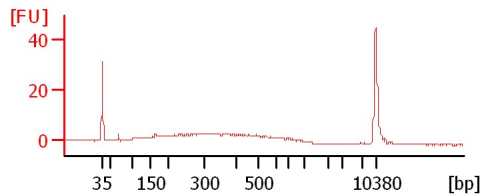
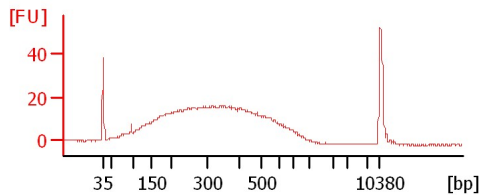
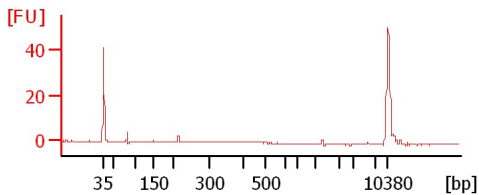
C83



C84

C85

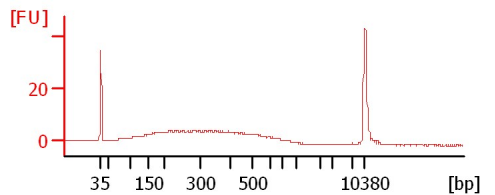
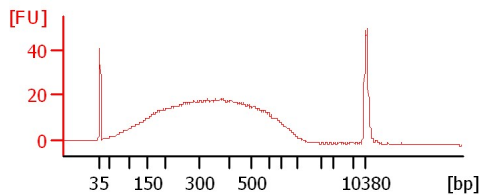
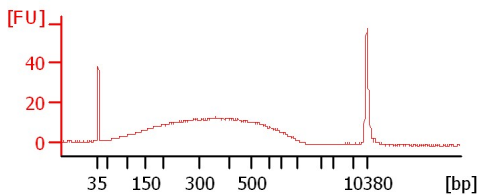
C86



C87

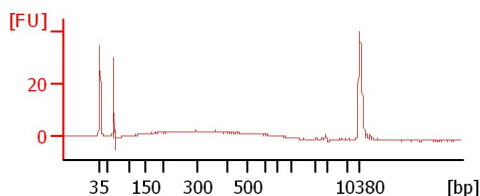
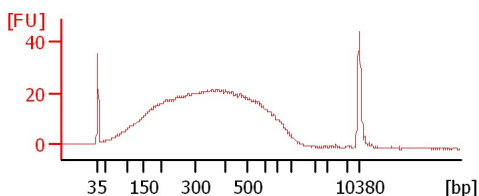
C88

C89



C90

C91



Assay Class: High Sensitivity DNA Assay
Data Path: C:\...ents and Settings\Bioanalyzer\2012-07-30\2012-07-30_002.xad

Created: 7/30/2012 12:47:39 PM
Modified: 7/30/2012 1:31:36 PM

Electrophoresis File Run Summary (Chip Summary)

Sample Name	Sample Comment	Rest. Digest	Status	Observation	Result Label	Result Color
C81_9x15s_90s_onOff		<input type="checkbox"/>	✓			
C82		<input type="checkbox"/>	✓			
C83		<input type="checkbox"/>	✓			
C84		<input type="checkbox"/>	✓			
C85		<input type="checkbox"/>	✓			
C86		<input type="checkbox"/>	✓			
C87		<input type="checkbox"/>	✓			
C88		<input type="checkbox"/>	✓			
C89		<input type="checkbox"/>	✓			
C90		<input type="checkbox"/>	✓			
C91		<input type="checkbox"/>	✓			
Ladder		<input type="checkbox"/>	✓			

Chip Lot #

Reagent Kit Lot #

Chip Comments :

Assay Class: High Sensitivity DNA Assay
Data Path: C:\...ents and Settings\Bioanalyzer\2012-07-30\2012-07-30_002.xad

Created: 7/30/2012 12:47:39 PM
Modified: 7/30/2012 1:31:36 PM

Electrophoresis Assay Details

General Analysis Settings

Number of Available Sample and Ladder Wells (Max.) : 12
Minimum Visible Range [s] : 32
Maximum Visible Range [s] : 138
Start Analysis Time Range [s] : 33
End Analysis Time Range [s] : 137.5
Ladder Concentration [pg/μl] : 1950
Uses Standard Area for Ladder Fragments
Lower Marker Concentration [pg/μl] : 125
Upper Marker Concentration [pg/μl] : 75
Used Upper Marker for Quantitation
Standard Curve Fit is Point to Point
Show Data Aligned to Lower and Upper Marker

Integrator Settings

Integration Start Time [s] : 33.05
Integration End Time [s] : 137
Slope Threshold : 0.8
Height Threshold [FU] : 5
Area Threshold : 0.1
Width Threshold [s] : 0.6
Baseline Plateau [s] : 0.5

Filter Settings

Filter Width [s] : 0.5
Polynomial Order : 4

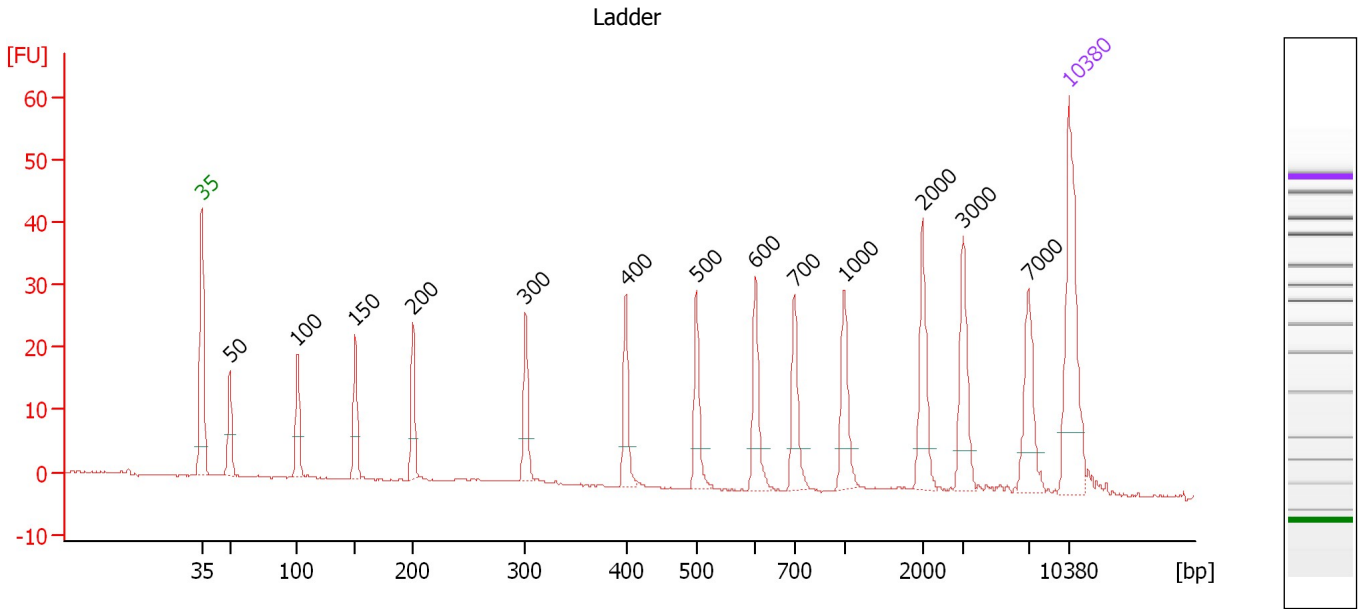
Ladder

Ladder Peak	Size	Area
1	35	160
2	50	210
3	100	208
4	150	221
5	200	242
6	300	270
7	400	305
8	500	306
9	600	336
10	700	321
11	1000	366
12	2000	413
13	3000	411
14	7000	400
15	10380	214

Assay Class: High Sensitivity DNA Assay
 Data Path: C:\...ents and Settings\Bioanalyzer\2012-07-30\2012-07-30_002.xad

Created: 7/30/2012 12:47:39 PM
 Modified: 7/30/2012 1:31:36 PM

Electropherogram Summary



Overall Results for Ladder

Noise: 0.1

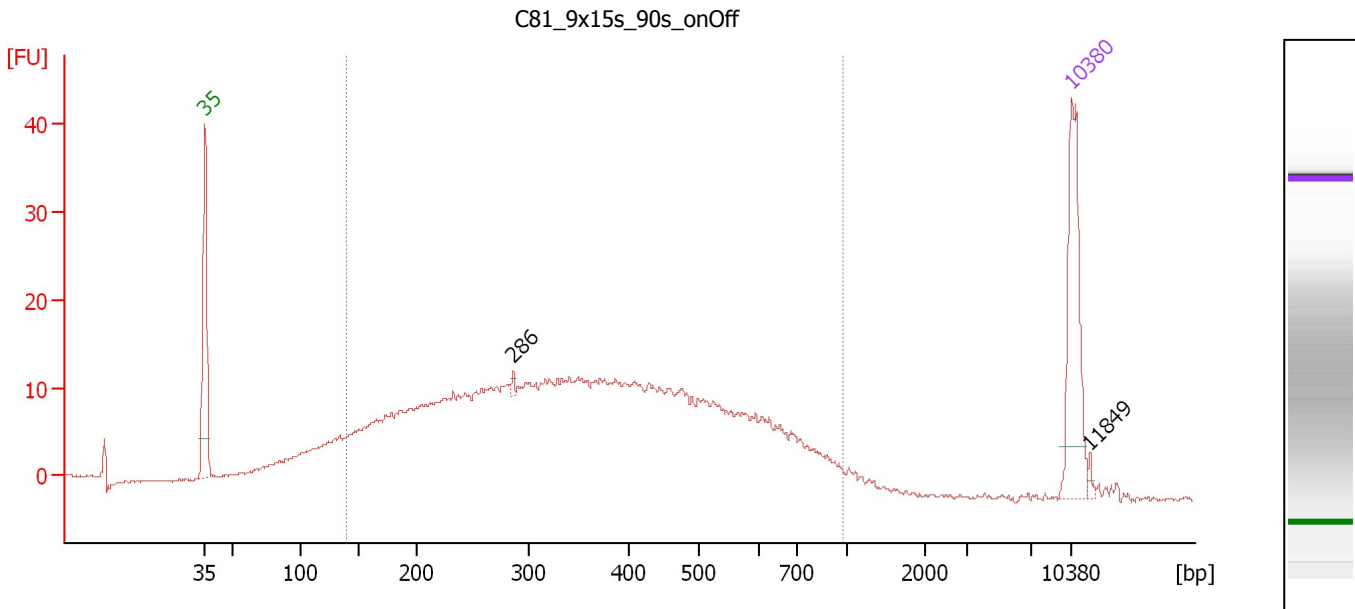
Peak table for Ladder

Peak	Size [bp]	Conc. [pg/μl]	Molarity [pmol/l]	Observations
1	35	125.00	5,411.3	Lower Marker
2	50	150.00	4,545.5	Ladder Peak
3	100	150.00	2,272.7	Ladder Peak
4	150	150.00	1,515.2	Ladder Peak
5	200	150.00	1,136.4	Ladder Peak
6	300	150.00	757.6	Ladder Peak
7	400	150.00	568.2	Ladder Peak
8	500	150.00	454.5	Ladder Peak
9	600	150.00	378.8	Ladder Peak
10	700	150.00	324.7	Ladder Peak
11	1,000	150.00	227.3	Ladder Peak
12	2,000	150.00	113.6	Ladder Peak
13	3,000	150.00	75.8	Ladder Peak
14	7,000	150.00	32.5	Ladder Peak
15	10,380	75.00	10.9	Upper Marker

Assay Class: High Sensitivity DNA Assay
 Data Path: C:\...ents and Settings\Bioanalyzer\2012-07-30\2012-07-30_002.xad

Created: 7/30/2012 12:47:39 PM
 Modified: 7/30/2012 1:31:36 PM

Electropherogram Summary Continued ...



Setpoint Deviations for sample 1 : C81_9x15s_90s_onOff

Height Threshold [FU] : 2

Overall Results for sample 1 : C81_9x15s_90s_onOff

Number of peaks found: 2 Corr. Area 1: 549.6
 Noise: 0.1

Peak table for sample 1 : C81_9x15s_90s_onOff

Peak	Size [bp]	Conc. [pg/μl]	Molarity [pmol/l]	Observations
1	35	125.00	5,411.3	Lower Marker
2	286	3.44	18.2	
3	10,380	75.00	10.9	Upper Marker
4	11,849	0.00	0.0	

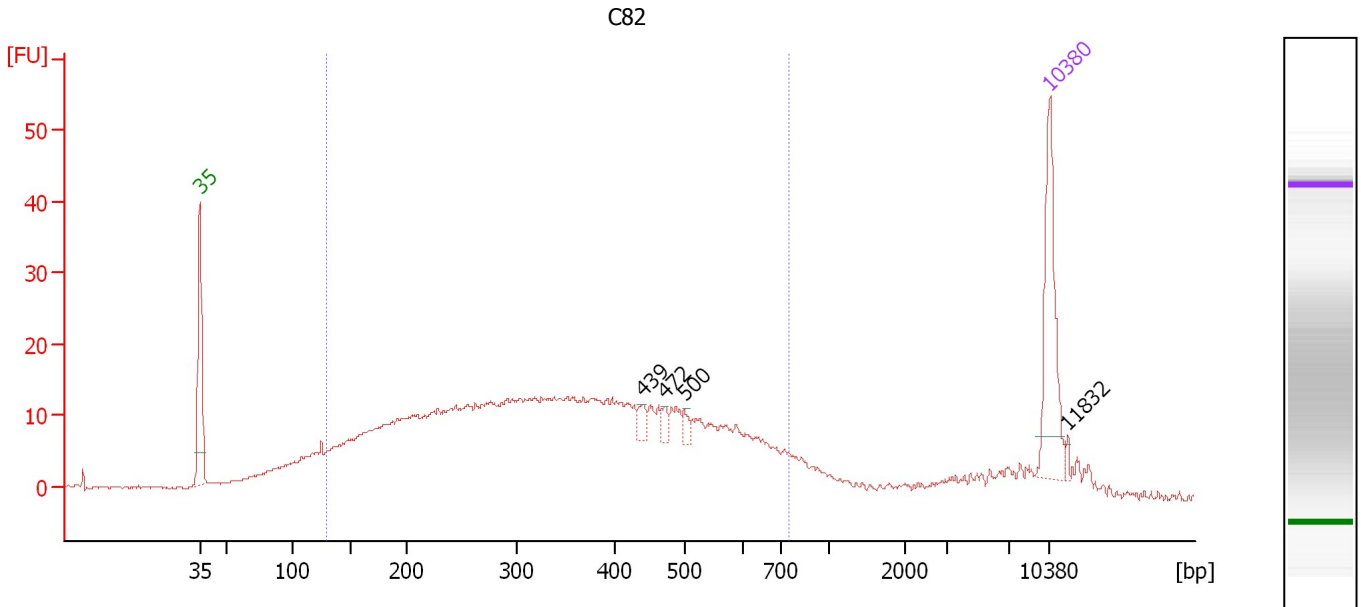
Region table for sample 1 : C81_9x15s_90s_onOff

From [bp]	To [bp]	Average Size [bp]	Molarity [pmol/l]	Conc. [pg/μl]	Corr. Area	% of Total	Size distribution in CV [%]	Color
139	970	383	7,310.9	1,410.88	549.6	89	42.3	Blue

Assay Class: High Sensitivity DNA Assay
 Data Path: C:\...ents and Settings\Bioanalyzer\2012-07-30\2012-07-30_002.xad

Created: 7/30/2012 12:47:39 PM
 Modified: 7/30/2012 1:31:36 PM

Electropherogram Summary Continued ...



Overall Results for sample 2 : C82

Number of peaks found: 4 Corr. Area 1: 591.7
 Noise: 0.2

Peak table for sample 2 : C82

Peak	Size [bp]	Conc. [pg/μl]	Molarity [pmol/l]	Observations
1	35	125.00	5,411.3	Lower Marker
2	439	10.21	35.2	
3	472	7.41	23.8	
4	500	7.73	23.4	
5	10,380	75.00	10.9	Upper Marker
6	11,832	0.00	0.0	

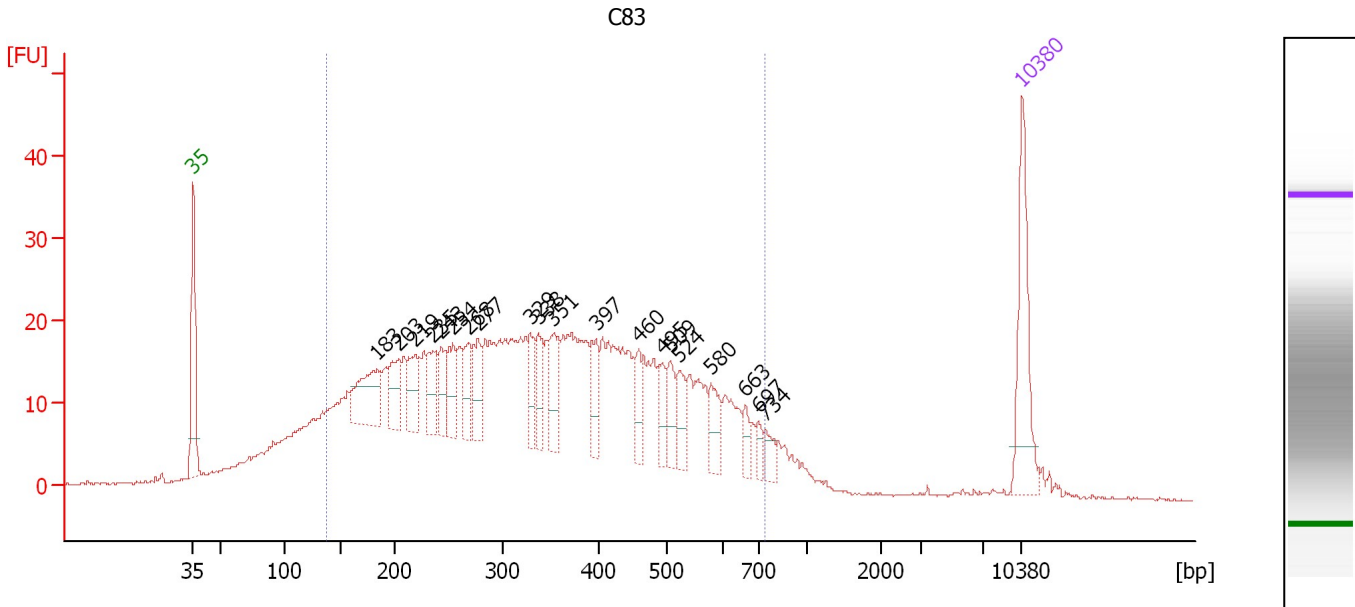
Region table for sample 2 : C82

From [bp]	To [bp]	Average Size [bp]	Molarity [pmol/l]	Conc. [pg/μl]	Corr. Area	% of Total	Size distribution in CV [%]	Color
129	754	361	7,925.7	1,454.59	591.7	84	39.3	Blue

Assay Class: High Sensitivity DNA Assay
 Data Path: C:\...ents and Settings\Bioanalyzer\2012-07-30\2012-07-30_002.xad

Created: 7/30/2012 12:47:39 PM
 Modified: 7/30/2012 1:31:36 PM

Electropherogram Summary Continued ...



Overall Results for sample 3 : C83

Number of peaks found: 20 Corr. Area 1: 849.6
 Noise: 0.1

Peak table for sample 3 : C83

Peak	Size [bp]	Conc. [pg/μl]	Molarity [pmol/l]	Observations
1	35	125.00	5,411.3	Lower Marker
2	183	85.89	709.9	
3	203	49.10	366.0	
4	219	50.45	349.6	
5	235	41.69	268.8	
6	243	35.49	221.4	
7	254	40.49	241.7	
8	268	36.58	207.0	
9	277	43.85	239.7	
10	329	32.26	148.6	
11	338	34.18	153.3	
12	351	43.51	187.7	
13	397	36.59	139.5	
14	460	29.24	96.4	
15	495	28.13	86.0	
16	509	29.23	87.1	
17	524	28.63	82.8	
18	580	31.27	81.7	
19	663	13.70	31.3	
20	697	10.82	23.5	
21	734	14.67	30.3	
22	10,380	75.00	10.9	Upper Marker

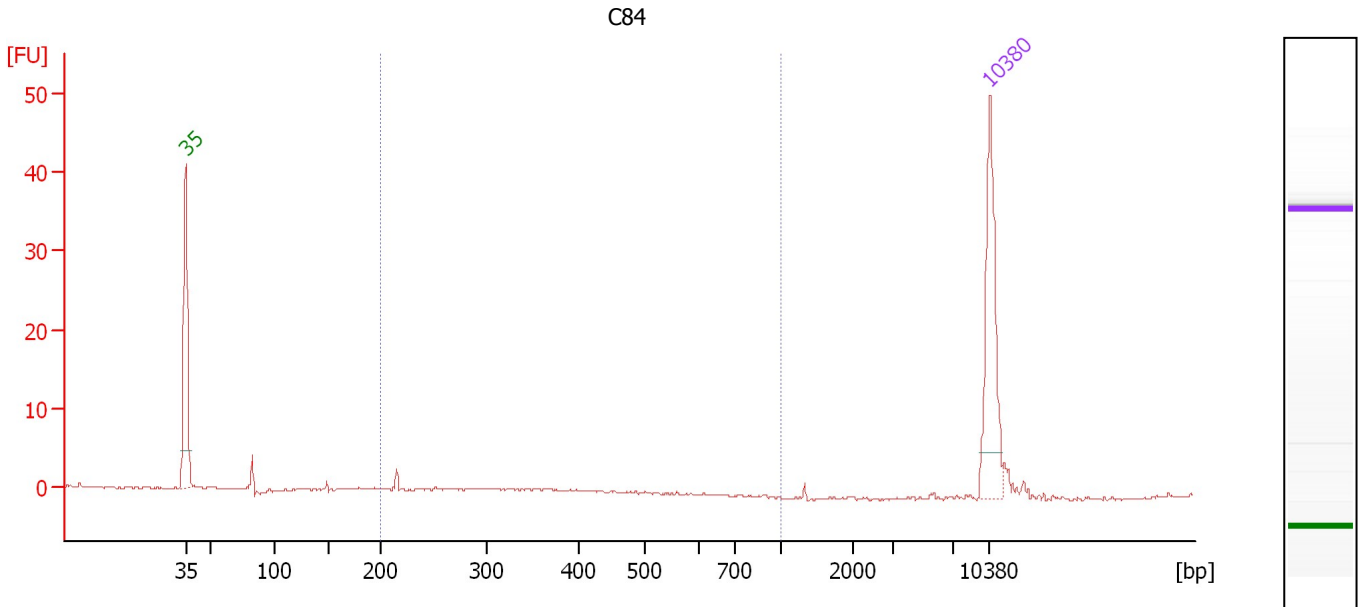
Region table for sample 3 : C83

From [bp]	To [bp]	Average Size [bp]	Molarity [pmol/l]	Conc. [pg/μl]	Corr. Area	% of Total	Size distribution in CV [%]	Color
137	735	358	13,032.3	2,402.66	849.6	85	38.8	Blue

Assay Class: High Sensitivity DNA Assay
 Data Path: C:\...ents and Settings\Bioanalyzer\2012-07-30\2012-07-30_002.xad

Created: 7/30/2012 12:47:39 PM
 Modified: 7/30/2012 1:31:36 PM

Electropherogram Summary Continued ...



Overall Results for sample 4 : C84

Number of peaks found: 0 Corr. Area 1: 4.4
 Noise: 0.1

Peak table for sample 4 : C84

Peak	Size [bp]	Conc. [pg/μl]	Molarity [pmol/l]	Observations
1	35	125.00	5,411.3	Lower Marker
2	10,380	75.00	10.9	Upper Marker

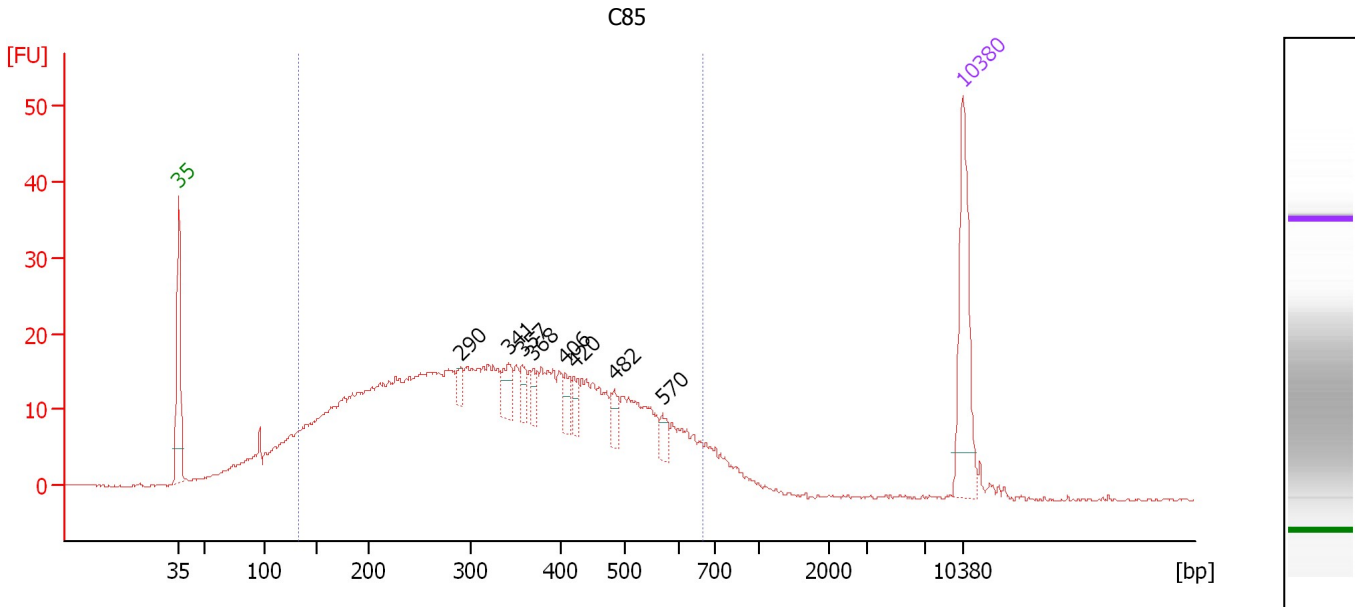
Region table for sample 4 : C84

From [bp]	To [bp]	Average Size [bp]	Molarity [pmol/l]	Conc. [pg/μl]	Corr. Area	% of Total	Size distribution in CV [%]	Color
200	1,000	296	64.5	11.86	4.4	36	22.1	Blue

Assay Class: High Sensitivity DNA Assay
 Data Path: C:\...ents and Settings\Bioanalyzer\2012-07-30\2012-07-30_002.xad

Created: 7/30/2012 12:47:39 PM
 Modified: 7/30/2012 1:31:36 PM

Electropherogram Summary Continued ...



Overall Results for sample 5 : C85

Number of peaks found: 8 Corr. Area 1: 698.5
 Noise: 0.1

Peak table for sample 5 : C85

Peak	Size [bp]	Conc. [pg/μl]	Molarity [pmol/l]	Observations
1	35	125.00	5,411.3	Lower Marker
2	290	11.15	58.3	
3	341	22.39	99.4	
4	357	14.43	61.3	
5	368	15.01	61.7	
6	406	15.88	59.2	
7	420	13.59	49.1	
8	482	14.73	46.3	
9	570	12.13	32.3	
10	10,380	75.00	10.9	Upper Marker

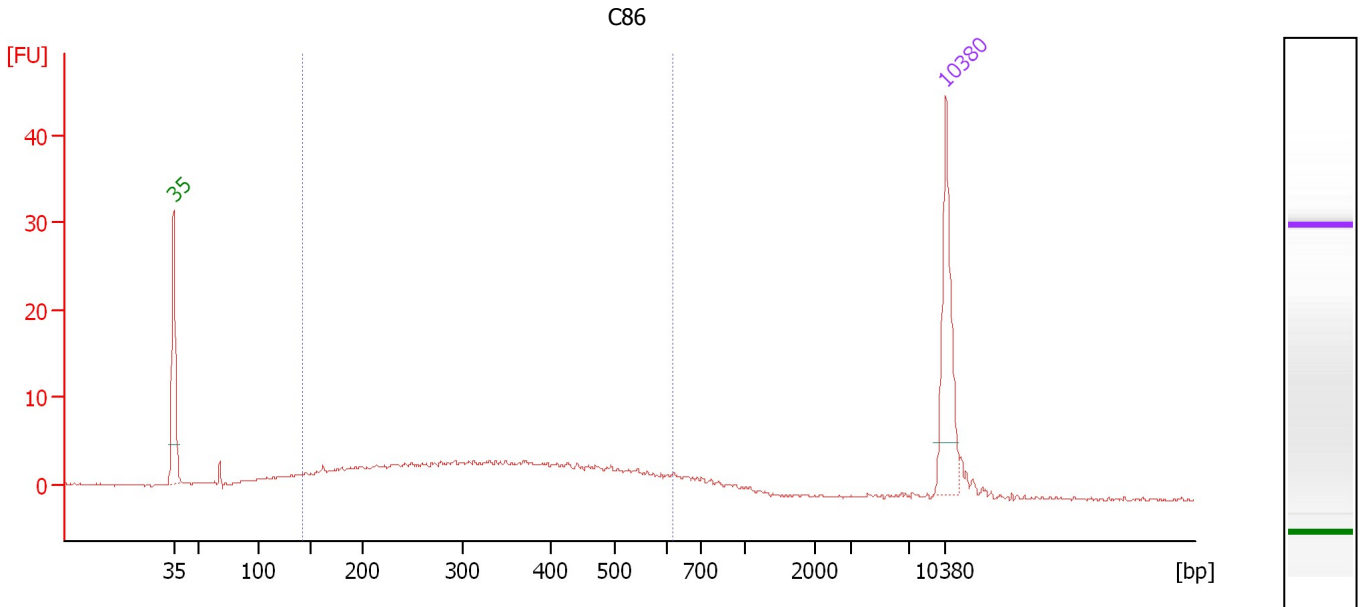
Region table for sample 5 : C85

From [bp]	To [bp]	Average Size [bp]	Molarity [pmol/l]	Conc. [pg/μl]	Corr. Area	% of Total	Size distribution in CV [%]	Color
132	670	343	9,663.9	1,730.68	698.5	88	37.4	Blue

Assay Class: High Sensitivity DNA Assay
 Data Path: C:\...ents and Settings\Bioanalyzer\2012-07-30\2012-07-30_002.xad

Created: 7/30/2012 12:47:39 PM
 Modified: 7/30/2012 1:31:36 PM

Electropherogram Summary Continued ...



Overall Results for sample 6 : C86

Number of peaks found: 0 Corr. Area 1: 128.3
 Noise: 0.1

Peak table for sample 6 : C86

Peak	Size [bp]	Conc. [pg/μl]	Molarity [pmol/l]	Observations
1	35	125.00	5,411.3	Lower Marker
2	10,380	75.00	10.9	Upper Marker

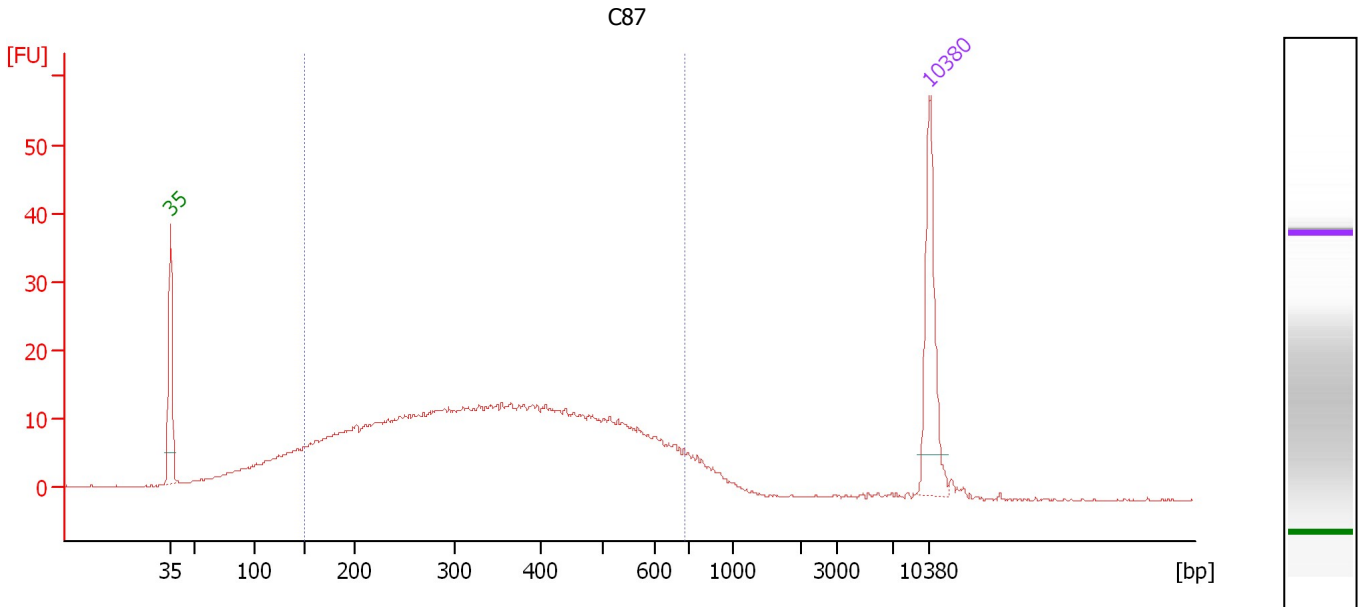
Region table for sample 6 : C86

From [bp]	To [bp]	Average Size [bp]	Molarity [pmol/l]	Conc. [pg/μl]	Corr. Area	% of Total	Size distribution in CV [%]	Color
142	620	347	2,153.7	400.27	128.3	80	34.9	Blue

Assay Class: High Sensitivity DNA Assay
 Data Path: C:\...ents and Settings\Bioanalyzer\2012-07-30\2012-07-30_002.xad

Created: 7/30/2012 12:47:39 PM
 Modified: 7/30/2012 1:31:36 PM

Electropherogram Summary Continued ...



Overall Results for sample 7 : C87

Number of peaks found: 0 Corr. Area 1: 517.2
 Noise: 0.2

Peak table for sample 7 : C87

Peak	Size [bp]	Conc. [pg/μl]	Molarity [pmol/l]	Observations
1	35	125.00	5,411.3	Lower Marker
2	10,380	75.00	10.9	Upper Marker

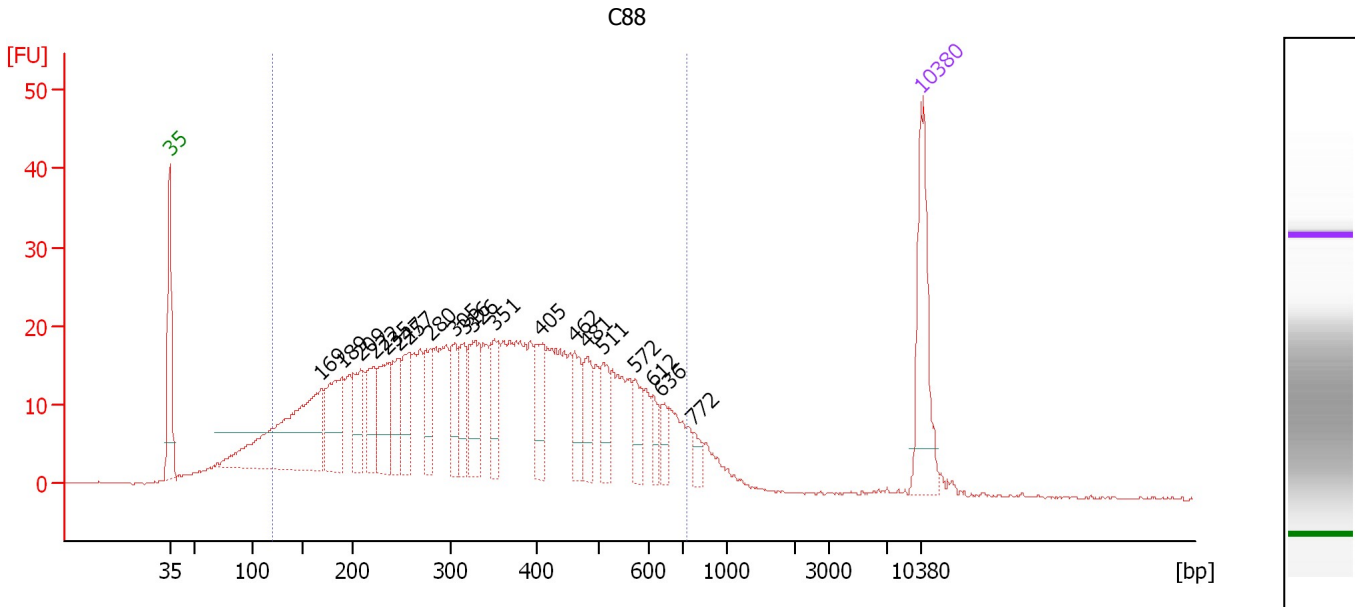
Region table for sample 7 : C87

From [bp]	To [bp]	Average Size [bp]	Molarity [pmol/l]	Conc. [pg/μl]	Corr. Area	% of Total	Size distribution in CV [%]	Color
150	686	365	5,779.5	1,122.48	517.2	84	36.0	Blue

Assay Class: High Sensitivity DNA Assay
 Data Path: C:\...ents and Settings\Bioanalyzer\2012-07-30\2012-07-30_002.xad

Created: 7/30/2012 12:47:39 PM
 Modified: 7/30/2012 1:31:36 PM

Electropherogram Summary Continued ...



Overall Results for sample 8 : C88

Number of peaks found: 20 Corr. Area 1: 843.0
 Noise: 0.1

Peak table for sample 8 : C88

Peak	Size [bp]	Conc. [pg/μl]	Molarity [pmol/l]	Observations
1	35	125.00	5,411.3	Lower Marker
2	169	248.88	2,233.7	
3	189	85.89	688.2	
4	209	55.02	399.8	
5	222	52.84	361.2	
6	235	63.79	410.7	
7	247	50.82	311.3	
8	257	52.17	308.0	
9	280	48.53	262.5	
10	305	42.03	209.0	
11	316	44.00	211.1	
12	326	60.20	279.7	
13	351	47.17	203.4	
14	405	46.30	173.3	
15	462	36.71	120.5	
16	481	37.24	117.3	
17	511	34.70	103.0	
18	572	25.60	67.8	
19	612	16.19	40.0	
20	636	16.36	39.0	
21	772	11.58	22.7	
22	10,380	75.00	10.9	Upper Marker

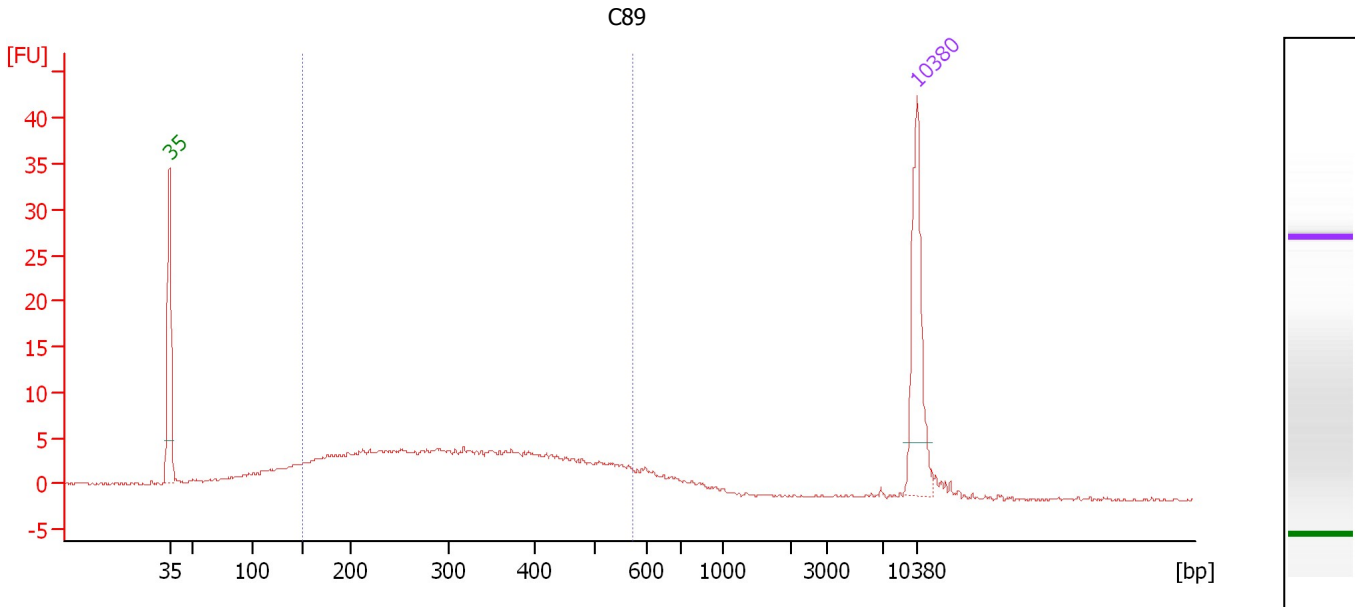
Region table for sample 8 : C88

From [bp]	To [bp]	Average Size [bp]	Molarity [pmol/l]	Conc. [pg/μl]	Corr. Area	% of Total	Size distribution in CV [%]	Color
121	721	357	10,888.0	1,951.75	843.0	89	39.5	Blue

Assay Class: High Sensitivity DNA Assay
 Data Path: C:\...ents and Settings\Bioanalyzer\2012-07-30\2012-07-30_002.xad

Created: 7/30/2012 12:47:39 PM
 Modified: 7/30/2012 1:31:36 PM

Electropherogram Summary Continued ...



Overall Results for sample 9 : C89

Number of peaks found: 0 Corr. Area 1: 167.0
 Noise: 0.1

Peak table for sample 9 : C89

Peak	Size [bp]	Conc. [pg/μl]	Molarity [pmol/l]	Observations
1	35	125.00	5,411.3	Lower Marker
2	10,380	75.00	10.9	Upper Marker

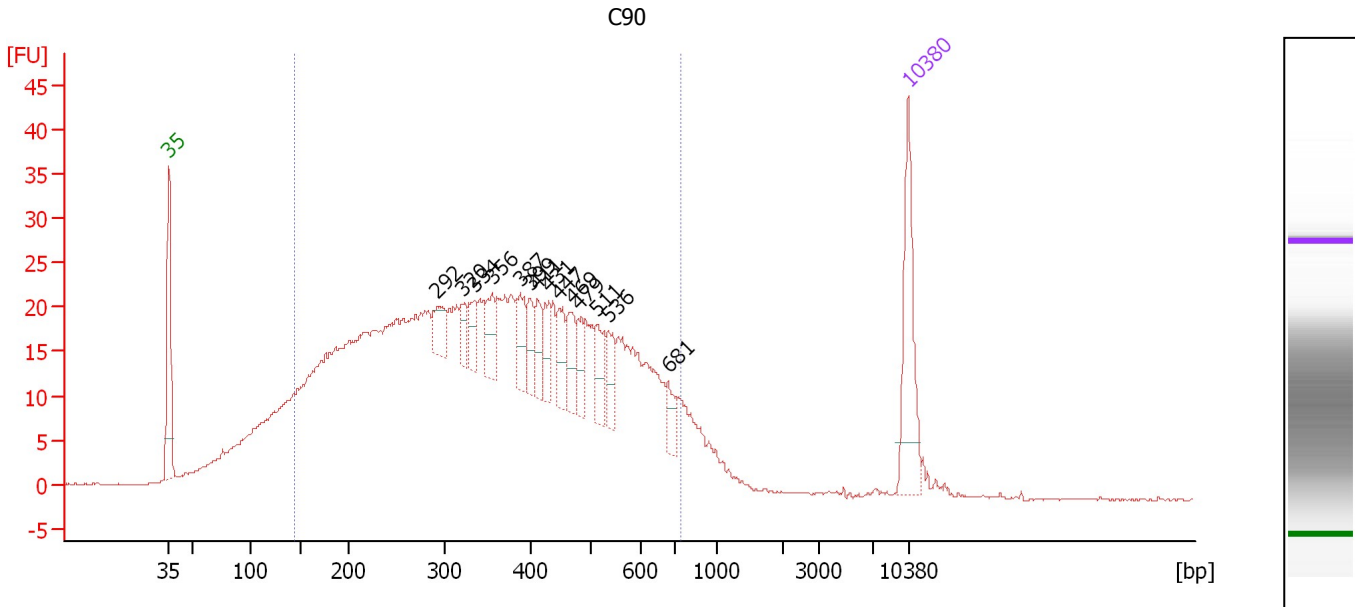
Region table for sample 9 : C89

From [bp]	To [bp]	Average Size [bp]	Molarity [pmol/l]	Conc. [pg/μl]	Corr. Area	% of Total	Size distribution in CV [%]	Color
151	575	329	2,710.9	491.97	167.0	79	33.4	Blue

Assay Class: High Sensitivity DNA Assay
 Data Path: C:\...ents and Settings\Bioanalyzer\2012-07-30\2012-07-30_002.xad

Created: 7/30/2012 12:47:39 PM
 Modified: 7/30/2012 1:31:36 PM

Electropherogram Summary Continued ...



Overall Results for sample 10 : C90

Number of peaks found: 14 Corr. Area 1: 919.9
 Noise: 0.1

Peak table for sample 10 : C90

Peak	Size [bp]	Conc. [pg/μl]	Molarity [pmol/l]	Observations
1	35	125.00	5,411.3	Lower Marker
2	292	31.00	161.0	
3	320	18.43	87.2	
4	334	25.62	116.1	
5	356	32.10	136.7	
6	387	34.62	135.4	
7	399	23.45	89.0	
8	411	25.21	92.9	
9	431	23.75	83.5	
10	447	31.93	108.2	
11	469	33.58	108.5	
12	479	25.94	82.1	
13	511	31.68	94.0	
14	536	28.45	80.4	
15	681	18.73	41.7	
16	10,380	75.00	10.9	Upper Marker

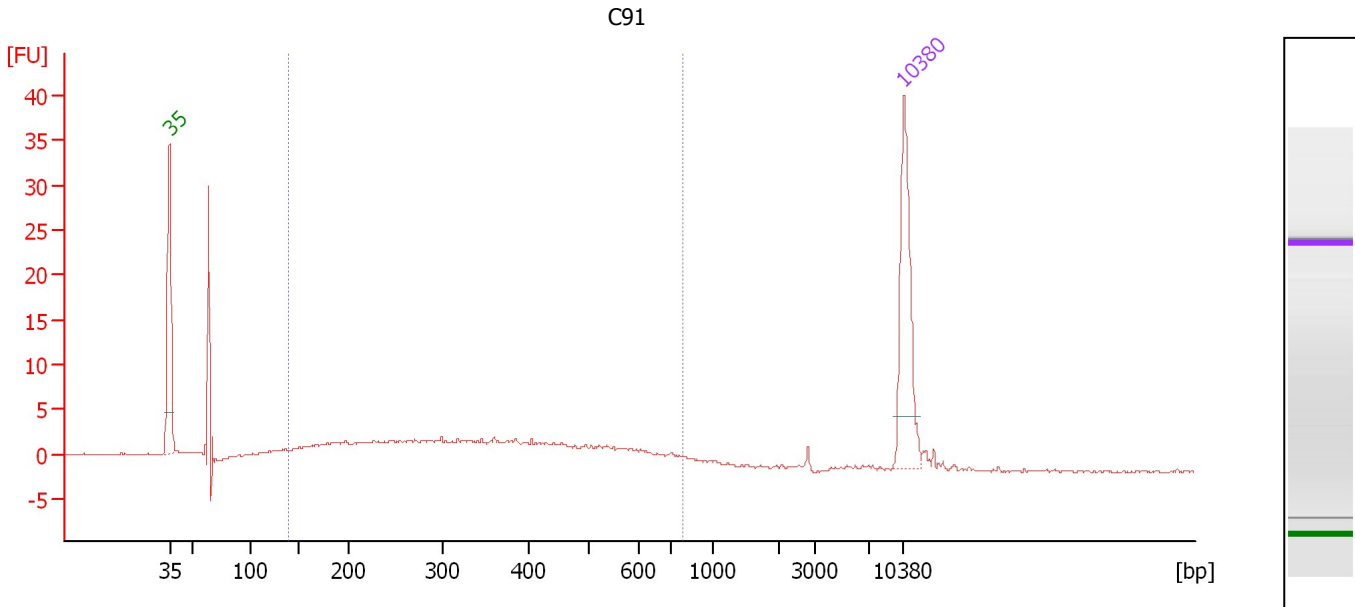
Region table for sample 10 : C90

From [bp]	To [bp]	Average Size [bp]	Molarity [pmol/l]	Conc. [pg/μl]	Corr. Area	% of Total	Size distribution in CV [%]	Color
145	752	371	13,629.3	2,627.76	919.9	86	38.1	Blue

Assay Class: High Sensitivity DNA Assay
 Data Path: C:\...ents and Settings\Bioanalyzer\2012-07-30\2012-07-30_002.xad

Created: 7/30/2012 12:47:39 PM
 Modified: 7/30/2012 1:31:36 PM

Electropherogram Summary Continued ...



Overall Results for sample 11 : C91

Number of peaks found: 0
 Noise: 0.1
 Corr. Area 1: 92.6

Peak table for sample 11 : C91

Peak	Size [bp]	Conc. [pg/μl]	Molarity [pmol/l]	Observations
1	35	125.00	5,411.3	Lower Marker
2	10,380	75.00	10.9	Upper Marker

Region table for sample 11 : C91

From [bp]	To [bp]	Average Size [bp]	Molarity [pmol/l]	Conc. [pg/μl]	Corr. Area	% of Total	Size distribution in CV [%]	Color
139	789	363	1,427.9	268.04	92.6	77	39.2	Blue

Assay Class: High Sensitivity DNA Assay
Data Path: C:\...ents and Settings\Bioanalyzer\2012-07-30\2012-07-30_002.xad

Created: 7/30/2012 12:47:39 PM
Modified: 7/30/2012 1:31:36 PM

Gel Image

