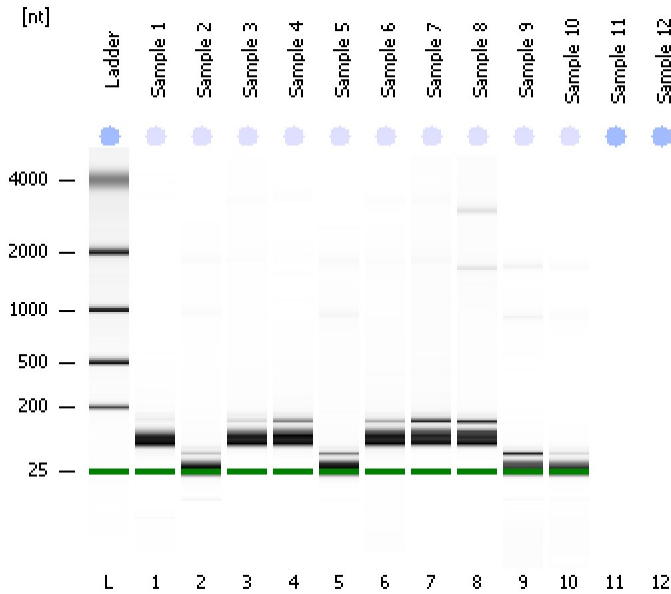


Assay Class: Eukaryote Total RNA Nano  
Data Path: C:\...ents and Settings\Bioanalyzer\2013-10-02\2013-10-02\_001.xad

Created: 10/2/2013 9:53:31 AM  
Modified: 10/2/2013 10:14:36 AM

Electrophoresis File Run Summary



Instrument Information:

Instrument Name: DE13701086      Firmware: C.01.069  
Serial#: DE13701086      Type: G2938B

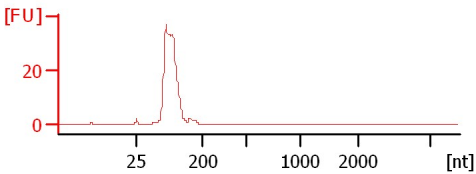
Assay Information:

Assay Origin Path: C:\Program Files\Agilent\2100 bioanalyzer\2100 expert\assays\RNA\Eukaryote Total RNA Nano Series II.xsy  
Assay Class: Eukaryote Total RNA Nano  
Version: 2.6  
Assay Comments: Total RNA Analysis ng sensitivity (Eukaryote)  
© Copyright 2003 - 2009 Agilent Technologies, Inc.

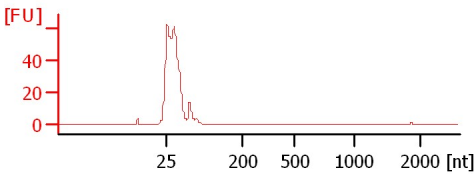
Chip Information:

Chip Lot #:   
Reagent Kit Lot #:   
Chip Comments:

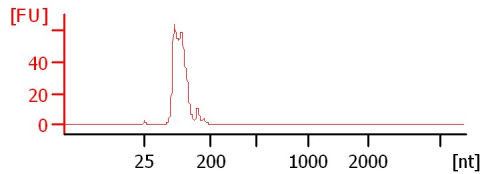
Sample 1  
RIN: 2.60



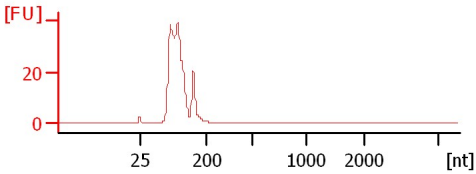
Sample 2  
RIN: 2.70



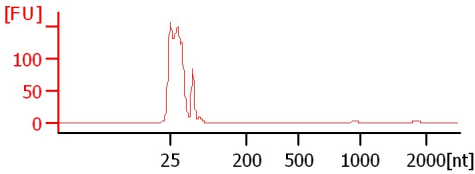
Sample 3  
RIN: 2.60



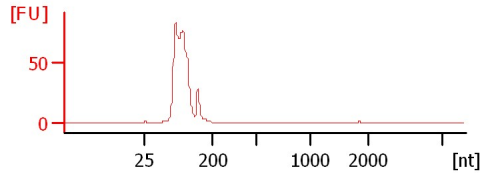
Sample 4  
RIN: 2.60



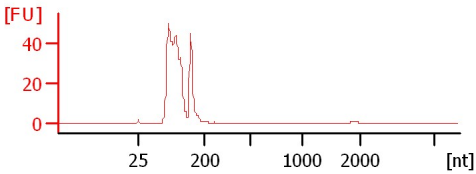
Sample 5  
RIN: 2.70



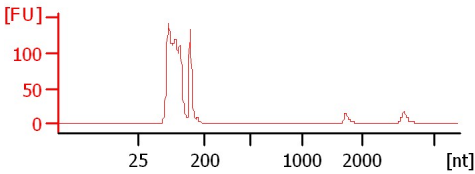
Sample 6  
RIN: 2.50



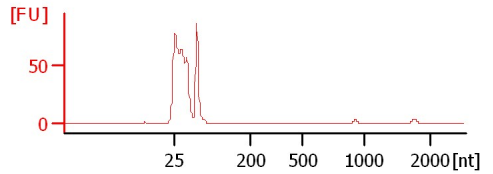
Sample 7  
RIN: 2.50



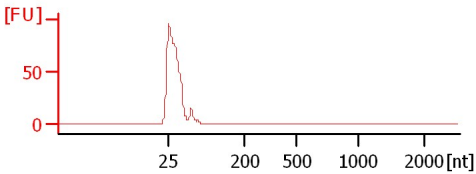
Sample 8  
RIN: 2.60



Sample 9  
RIN: 2.80



Sample 10  
RIN: 2



Assay Class: Eukaryote Total RNA Nano  
Data Path: C:\...ents and Settings\Bioanalyzer\2013-10-02\2013-10-02\_001.xad

Created: 10/2/2013 9:53:31 AM  
Modified: 10/2/2013 10:14:36 AM

**Electrophoresis File Run Summary (Chip Summary)**

Sample Name	Sample Comment	Status	Result Label	Result Color
Sample 1		✓	RIN: 2.60	
Sample 2		✓	RIN: 2.70	
Sample 3		✓	RIN: 2.60	
Sample 4		✓	RIN: 2.60	
Sample 5		✓	RIN: 2.70	
Sample 6		✓	RIN: 2.50	
Sample 7		✓	RIN: 2.50	
Sample 8		✓	RIN: 2.60	
Sample 9		✓	RIN: 2.80	
Sample 10		✓	RIN:2	
Sample 11				
Sample 12				
Ladder		✓	All Other Samples	

**Chip Lot #**

**Reagent Kit Lot #**

**Chip Comments :**

Assay Class: Eukaryote Total RNA Nano  
Data Path: C:\...ents and Settings\Bioanalyzer\2013-10-02\2013-10-02\_001.xad

Created: 10/2/2013 9:53:31 AM  
Modified: 10/2/2013 10:14:36 AM

**Electrophoresis Assay Details**

**General Analysis Settings**

Number of Available Sample and Ladder Wells (Max.) : 13  
Minimum Visible Range [s] : 17  
Maximum Visible Range [s] : 70  
Start Analysis Time Range [s] : 19  
End Analysis Time Range [s] : 69  
Ladder Concentration [ng/μl] : 150  
Lower Marker Concentration [ng/μl] : 0  
Upper Marker Concentration [ng/μl] : 0  
Used Lower Marker for Quantitation  
Standard Curve Fit is Logarithmic  
Show Data Aligned to Lower Marker

**Integrator Settings**

Integration Start Time [s] : 19  
Integration End Time [s] : 69  
Slope Threshold : 0.6  
Height Threshold [FU] : 0.5  
Area Threshold : 0.2  
Width Threshold [s] : 0.5  
Baseline Plateau [s] : 6

**Filter Settings**

Filter Width [s] : 0.5  
Polynomial Order : 4

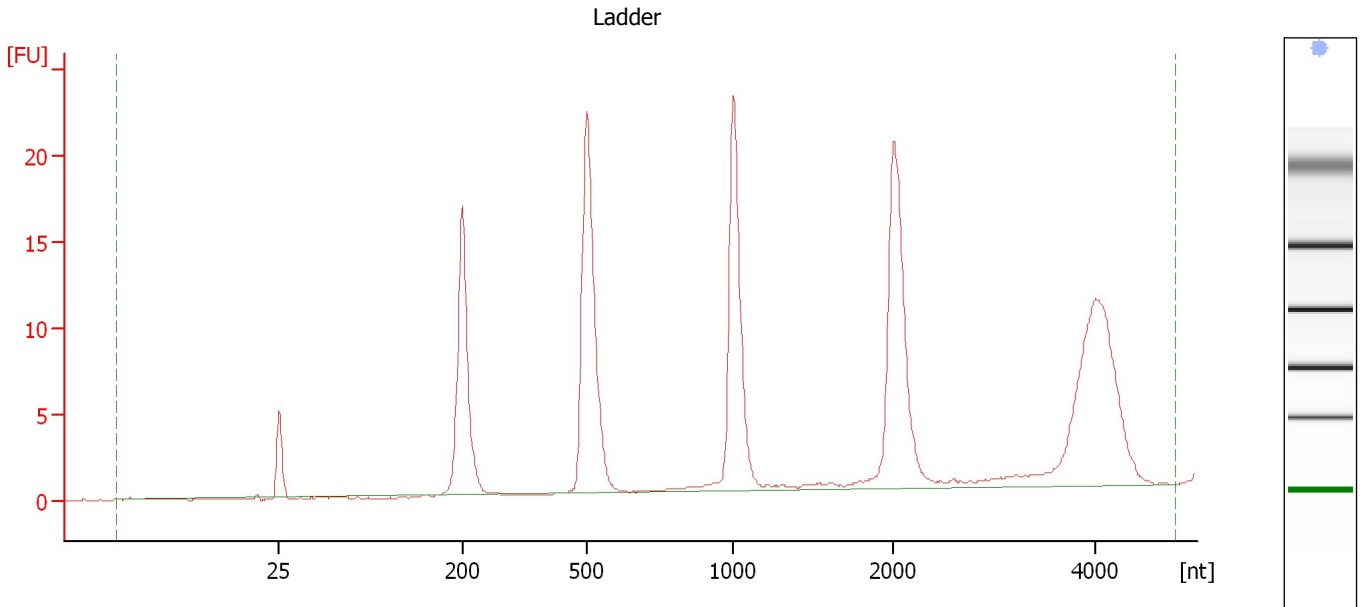
**Ladder**

Ladder Peak	Size
1	25
2	200
3	500
4	1000
5	2000
6	4000

Assay Class: Eukaryote Total RNA Nano  
Data Path: C:\...ents and Settings\Bioanalyzer\2013-10-02\2013-10-02\_001.xad

Created: 10/2/2013 9:53:31 AM  
Modified: 10/2/2013 10:14:36 AM

**Electropherogram Summary**



**Overall Results for Ladder**

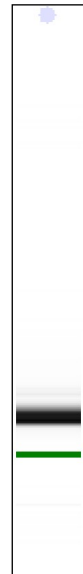
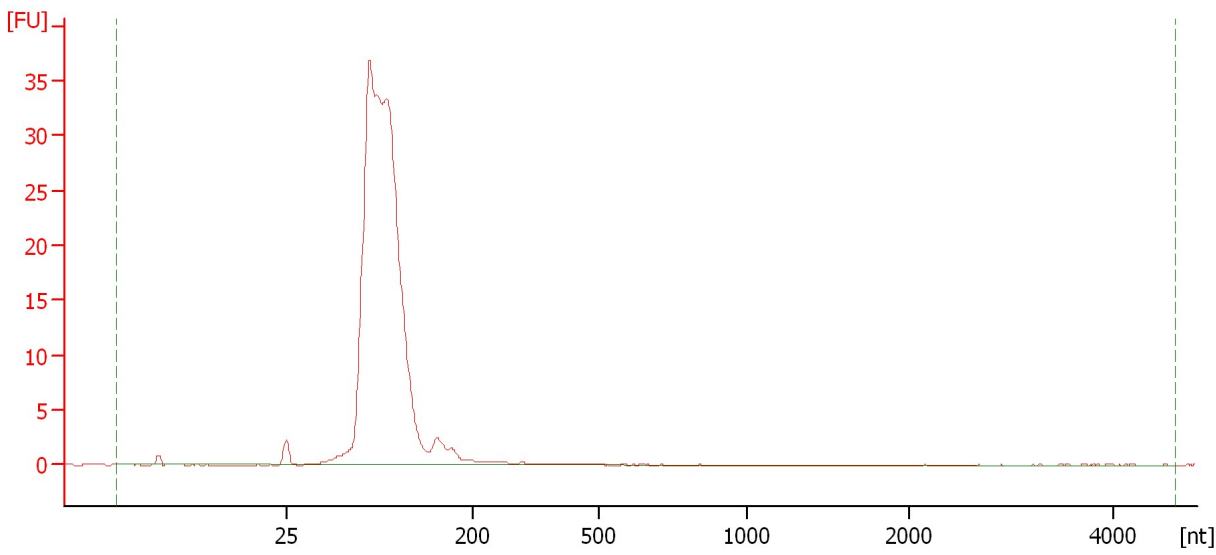
RNA Area:	166.3	Result Flagging Color:	<span style="background-color: blue; color: blue;"> </span>
RNA Concentration:	150 ng/ $\mu$ l	Result Flagging Label:	All Other Samples

Assay Class: Eukaryote Total RNA Nano  
Data Path: C:\...ents and Settings\Bioanalyzer\2013-10-02\2013-10-02\_001.xad

Created: 10/2/2013 9:53:31 AM  
Modified: 10/2/2013 10:14:36 AM

**Electropherogram Summary Continued ...**

Sample 1



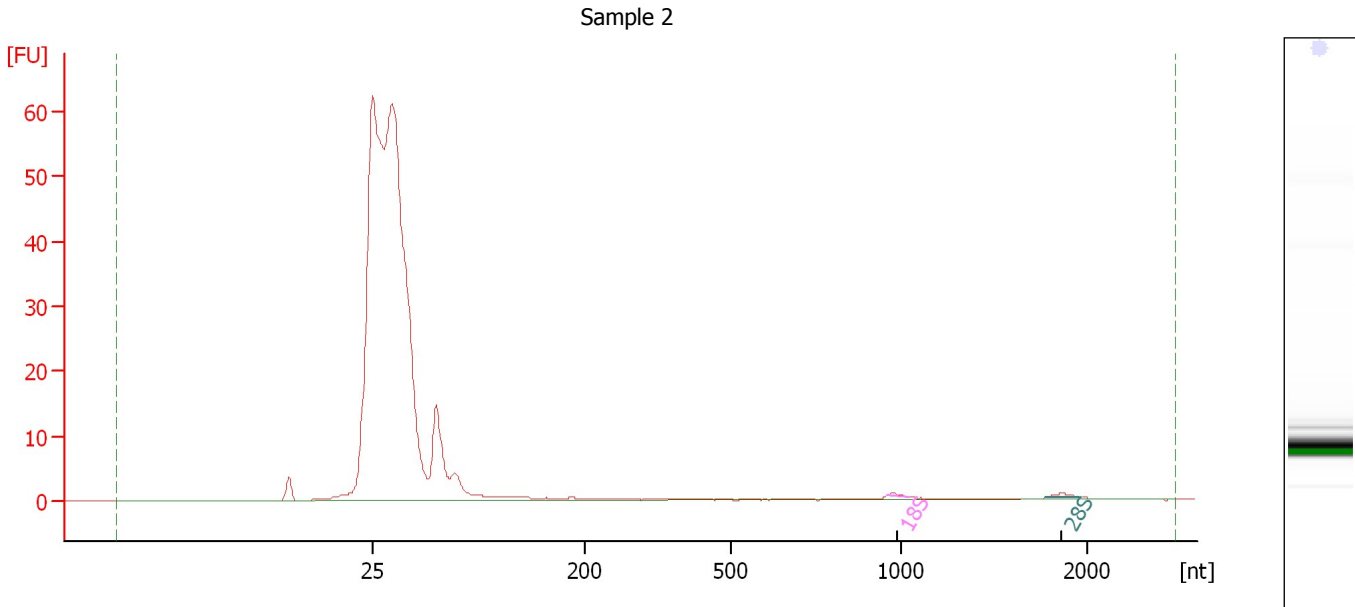
**Overall Results for sample 1 : Sample 1**

RNA Area:	222.8	RNA Integrity Number (RIN):	2.6 (B.02.08)
RNA Concentration:	201 ng/μl	Result Flagging Color:	<span style="background-color: #ccccff; border: 1px solid black; display: inline-block; width: 20px; height: 10px;"></span>
rRNA Ratio [28s / 18s]:	0.0	Result Flagging Label:	RIN: 2.60

Assay Class: Eukaryote Total RNA Nano  
Data Path: C:\...ents and Settings\Bioanalyzer\2013-10-02\2013-10-02\_001.xad

Created: 10/2/2013 9:53:31 AM  
Modified: 10/2/2013 10:14:36 AM

**Electropherogram Summary Continued ...**



**Overall Results for sample 2 : Sample 2**

RNA Area:	269.5	RNA Integrity Number (RIN):	2.7 (B.02.08)
RNA Concentration:	243 ng/μl	Result Flagging Color:	<span style="background-color: #ccccff; border: 1px solid black; display: inline-block; width: 20px; height: 10px;"></span>
rRNA Ratio [28s / 18s]:	1.9	Result Flagging Label:	RIN: 2.70

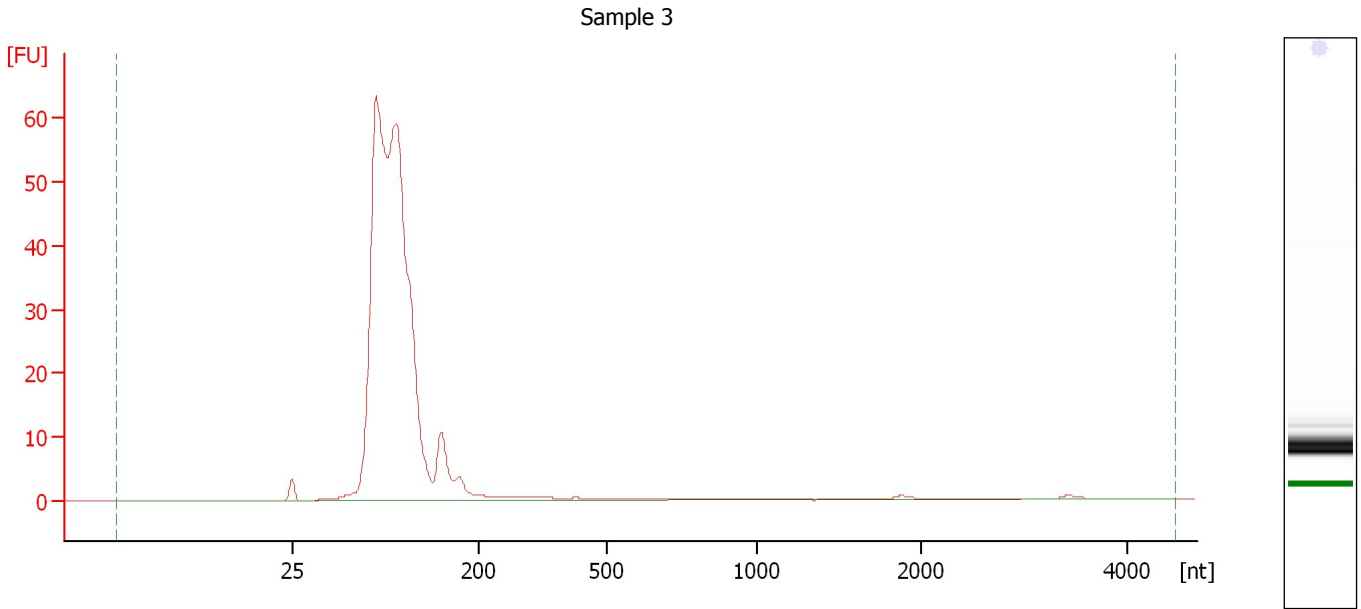
**Fragment table for sample 2 : Sample 2**

Name	Start Size [nt]	End Size [nt]	Area	% of total Area
18S	956	1,040	0.4	0.2
28S	1,774	1,957	0.9	0.3

Assay Class: Eukaryote Total RNA Nano  
Data Path: C:\...ents and Settings\Bioanalyzer\2013-10-02\2013-10-02\_001.xad

Created: 10/2/2013 9:53:31 AM  
Modified: 10/2/2013 10:14:36 AM

**Electropherogram Summary Continued ...**



**Overall Results for sample 3 : Sample 3**

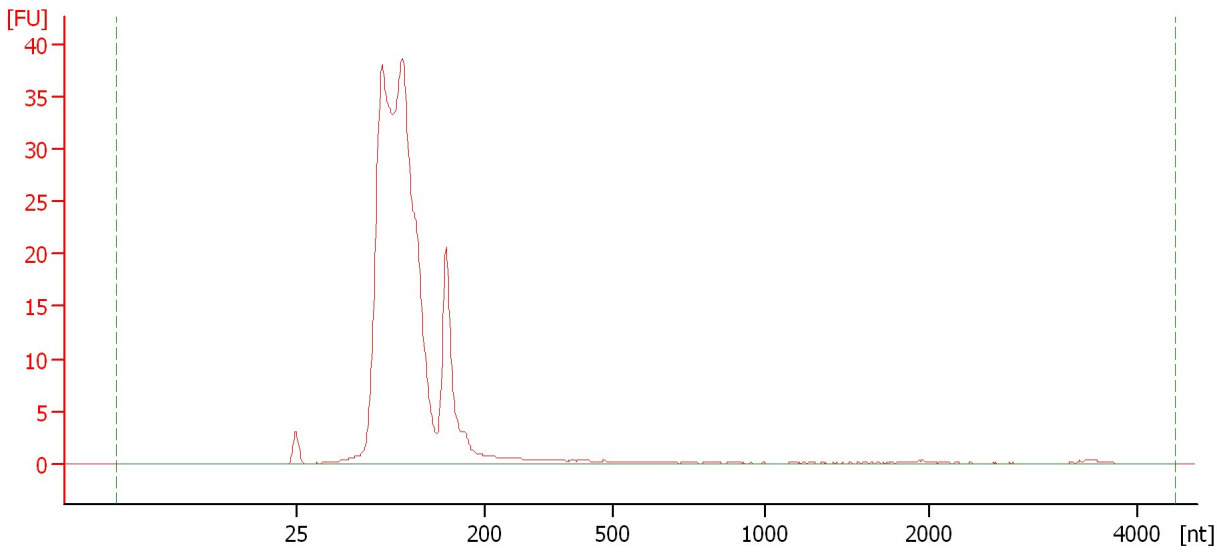
RNA Area:	407.3	RNA Integrity Number (RIN):	2.6 (B.02.08)
RNA Concentration:	367 ng/μl	Result Flagging Color:	<span style="background-color: #ccccff; border: 1px solid black; display: inline-block; width: 20px; height: 10px;"></span>
rRNA Ratio [28s / 18s]:	0.0	Result Flagging Label:	RIN: 2.60

Assay Class: Eukaryote Total RNA Nano  
Data Path: C:\...ents and Settings\Bioanalyzer\2013-10-02\2013-10-02\_001.xad

Created: 10/2/2013 9:53:31 AM  
Modified: 10/2/2013 10:14:36 AM

**Electropherogram Summary Continued ...**

Sample 4



**Overall Results for sample 4 : Sample 4**

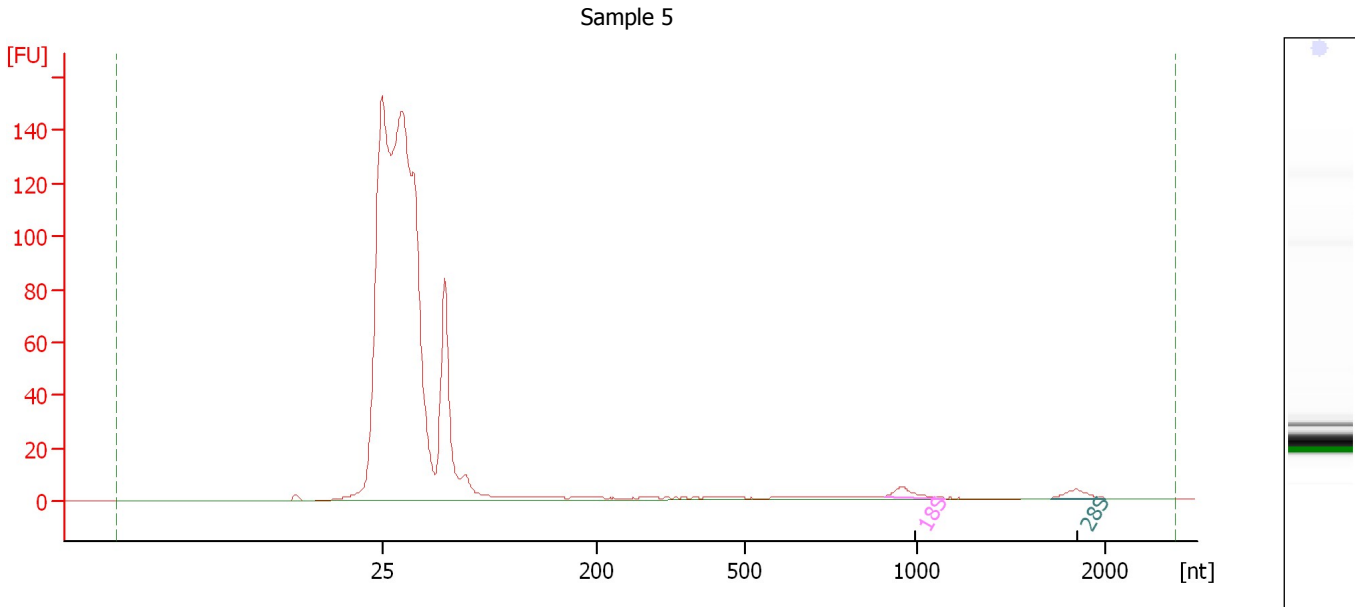
RNA Area:	281.8	RNA Integrity Number (RIN):	2.6 (B.02.08)
RNA Concentration:	254 ng/μl	Result Flagging Color:	<span style="background-color: #ccccff; border: 1px solid black; display: inline-block; width: 20px; height: 10px;"></span>
rRNA Ratio [28s / 18s]:	0.0	Result Flagging Label:	RIN: 2.60



Assay Class: Eukaryote Total RNA Nano  
Data Path: C:\...ents and Settings\Bioanalyzer\2013-10-02\2013-10-02\_001.xad

Created: 10/2/2013 9:53:31 AM  
Modified: 10/2/2013 10:14:36 AM

**Electropherogram Summary Continued ...**



**Overall Results for sample 5 : Sample 5**

RNA Area:	771.4	RNA Integrity Number (RIN):	2.7 (B.02.08)
RNA Concentration:	696 ng/μl	Result Flagging Color:	<span style="background-color: #ccccff; border: 1px solid black; display: inline-block; width: 20px; height: 10px;"></span>
rRNA Ratio [28s / 18s]:	0.9	Result Flagging Label:	RIN: 2.70

**Fragment table for sample 5 : Sample 5**

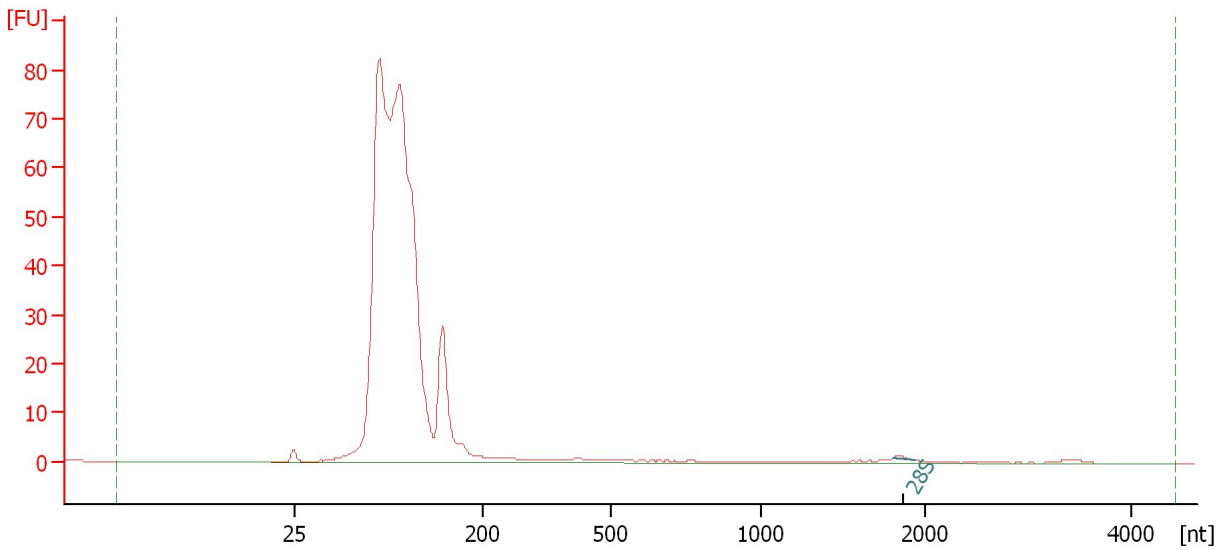
Name	Start Size [nt]	End Size [nt]	Area	% of total Area
18S	909	1,151	6.4	0.8
28S	1,717	1,995	5.6	0.7

Assay Class: Eukaryote Total RNA Nano  
Data Path: C:\...ents and Settings\Bioanalyzer\2013-10-02\2013-10-02\_001.xad

Created: 10/2/2013 9:53:31 AM  
Modified: 10/2/2013 10:14:36 AM

**Electropherogram Summary Continued ...**

Sample 6



**Overall Results for sample 6 : Sample 6**

RNA Area:	576.5	RNA Integrity Number (RIN):	2.5 (B.02.08)
RNA Concentration:	520 ng/μl	Result Flagging Color:	<span style="background-color: #ccccff; border: 1px solid black; display: inline-block; width: 20px; height: 10px;"></span>
rRNA Ratio [28s / 18s]:	0.0	Result Flagging Label:	RIN: 2.50

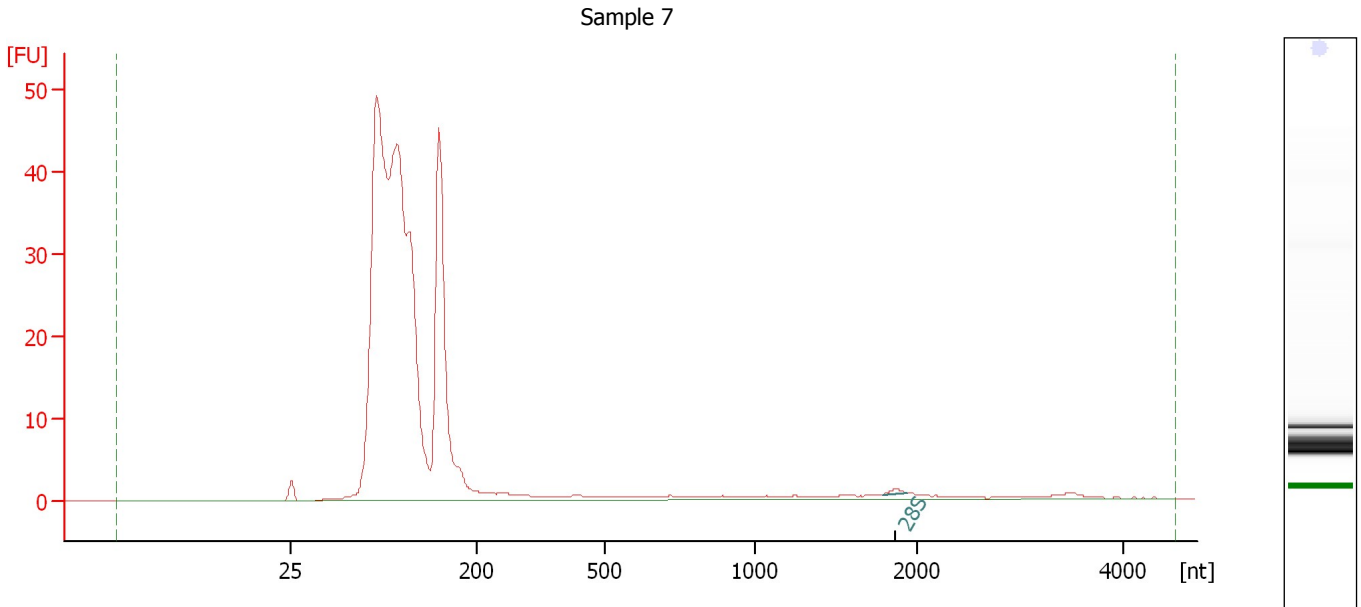
**Fragment table for sample 6 : Sample 6**

Name	Start Size [nt]	End Size [nt]	Area	% of total Area
28S	1,805	1,935	0.7	0.1

Assay Class: Eukaryote Total RNA Nano  
Data Path: C:\...ents and Settings\Bioanalyzer\2013-10-02\2013-10-02\_001.xad

Created: 10/2/2013 9:53:31 AM  
Modified: 10/2/2013 10:14:36 AM

**Electropherogram Summary Continued ...**



**Overall Results for sample 7 : Sample 7**

RNA Area:	381.2	RNA Integrity Number (RIN):	2.5 (B.02.08)
RNA Concentration:	344 ng/μl	Result Flagging Color:	<span style="background-color: #ccccff; border: 1px solid black; display: inline-block; width: 20px; height: 10px;"></span>
rRNA Ratio [28s / 18s]:	0.0	Result Flagging Label:	RIN: 2.50

**Fragment table for sample 7 : Sample 7**

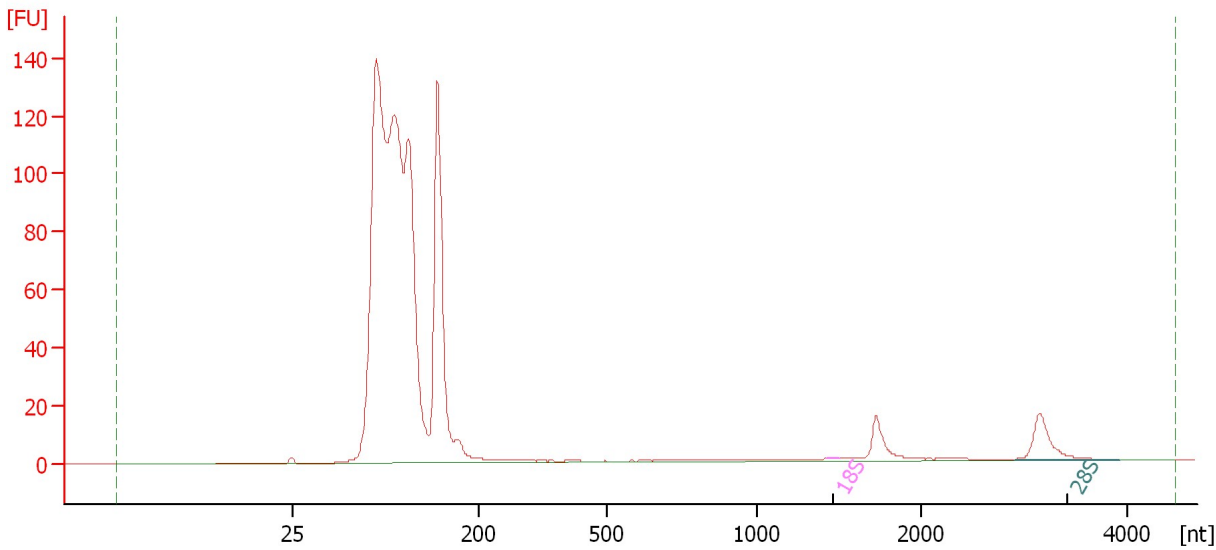
Name	Start Size [nt]	End Size [nt]	Area	% of total Area
28S	1,786	1,930	0.5	0.1

Assay Class: Eukaryote Total RNA Nano  
Data Path: C:\...ents and Settings\Bioanalyzer\2013-10-02\2013-10-02\_001.xad

Created: 10/2/2013 9:53:31 AM  
Modified: 10/2/2013 10:14:36 AM

**Electropherogram Summary Continued ...**

Sample 8



**Overall Results for sample 8 : Sample 8**

RNA Area: 1,048.6                      RNA Integrity Number (RIN): 2.6 (B.02.08)  
RNA Concentration: 946 ng/μl                      Result Flagging Color:   
rRNA Ratio [28s / 18s]: 112.6                      Result Flagging Label: RIN: 2.60

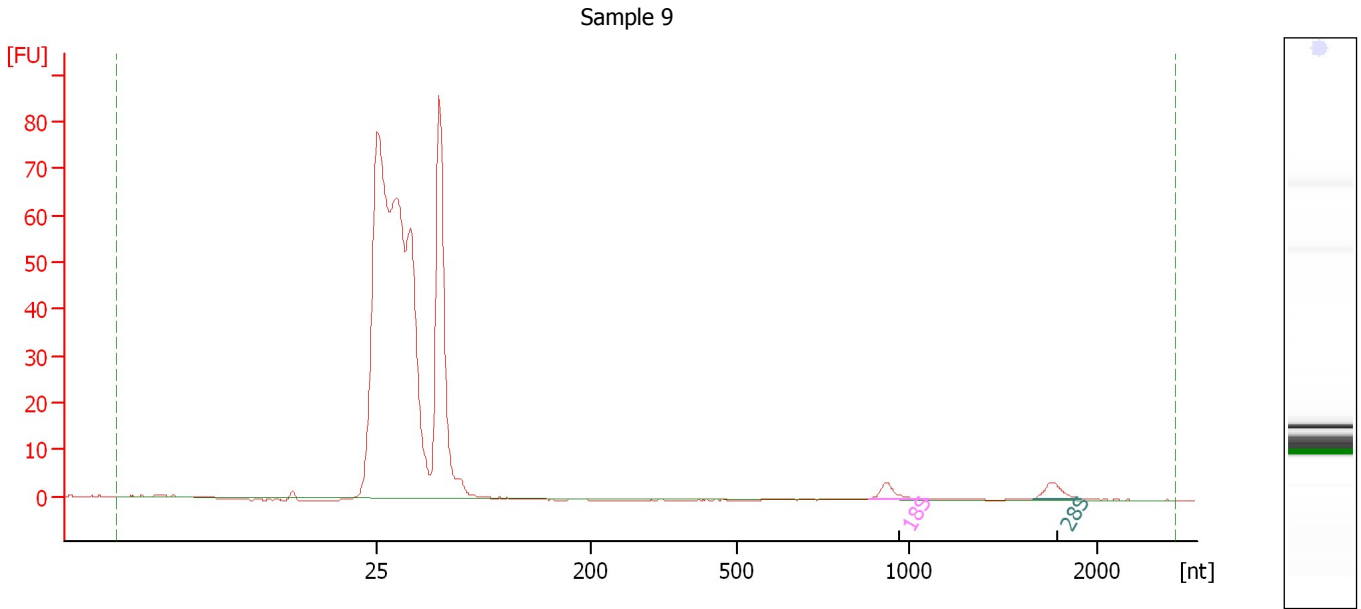
**Fragment table for sample 8 : Sample 8**

Name	Start Size [nt]	End Size [nt]	Area	% of total Area
18S	1,434	1,499	0.2	0.0
28S	2,913	3,928	22.6	2.2

Assay Class: Eukaryote Total RNA Nano  
Data Path: C:\...ents and Settings\Bioanalyzer\2013-10-02\2013-10-02\_001.xad

Created: 10/2/2013 9:53:31 AM  
Modified: 10/2/2013 10:14:36 AM

**Electropherogram Summary Continued ...**



**Overall Results for sample 9 : Sample 9**

RNA Area:	363.5	RNA Integrity Number (RIN):	2.8 (B.02.08)
RNA Concentration:	328 ng/μl	Result Flagging Color:	<span style="background-color: #ccccff; border: 1px solid black; display: inline-block; width: 20px; height: 10px;"></span>
rRNA Ratio [28s / 18s]:	1.1	Result Flagging Label:	RIN: 2.80

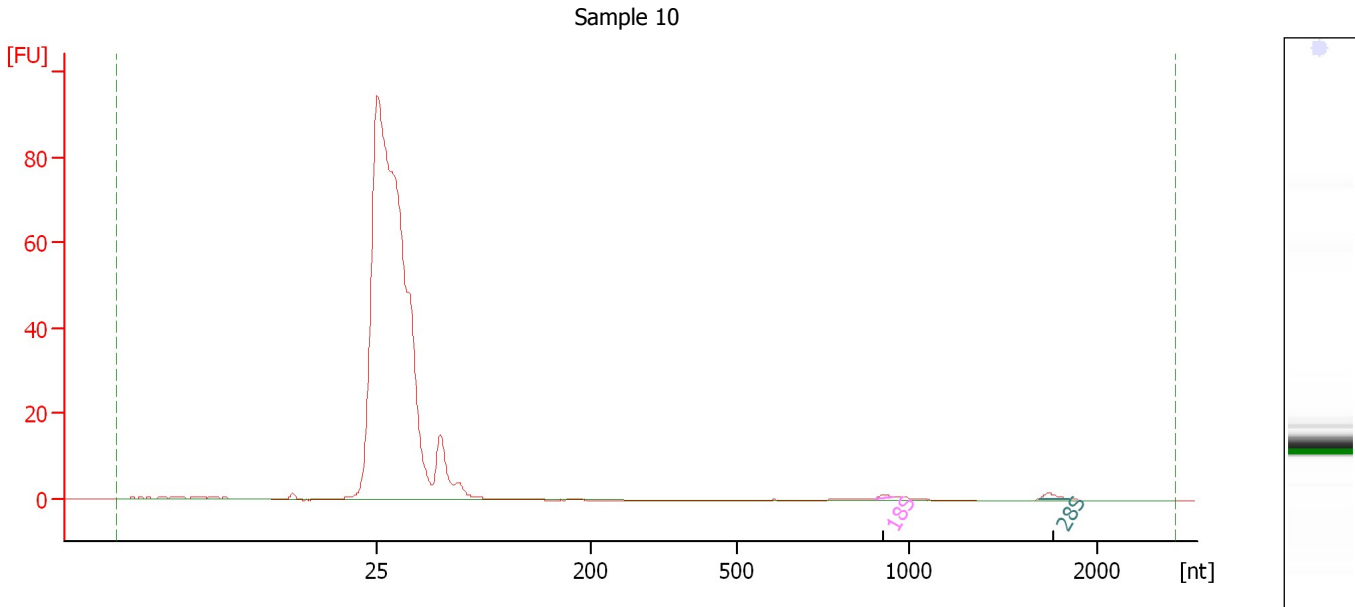
**Fragment table for sample 9 : Sample 9**

Name	Start Size [nt]	End Size [nt]	Area	% of total Area
18S	884	1,107	4.6	1.3
28S	1,660	1,916	5.0	1.4

Assay Class: Eukaryote Total RNA Nano  
Data Path: C:\...ents and Settings\Bioanalyzer\2013-10-02\2013-10-02\_001.xad

Created: 10/2/2013 9:53:31 AM  
Modified: 10/2/2013 10:14:36 AM

**Electropherogram Summary Continued ...**



**Overall Results for sample 10 : Sample 10**

RNA Area: 45.3                      RNA Integrity Number (RIN): 2 (B.02.08)  
RNA Concentration: 41 ng/μl              Result Flagging Color:   
rRNA Ratio [28s / 18s]: 2.9              Result Flagging Label: RIN:2

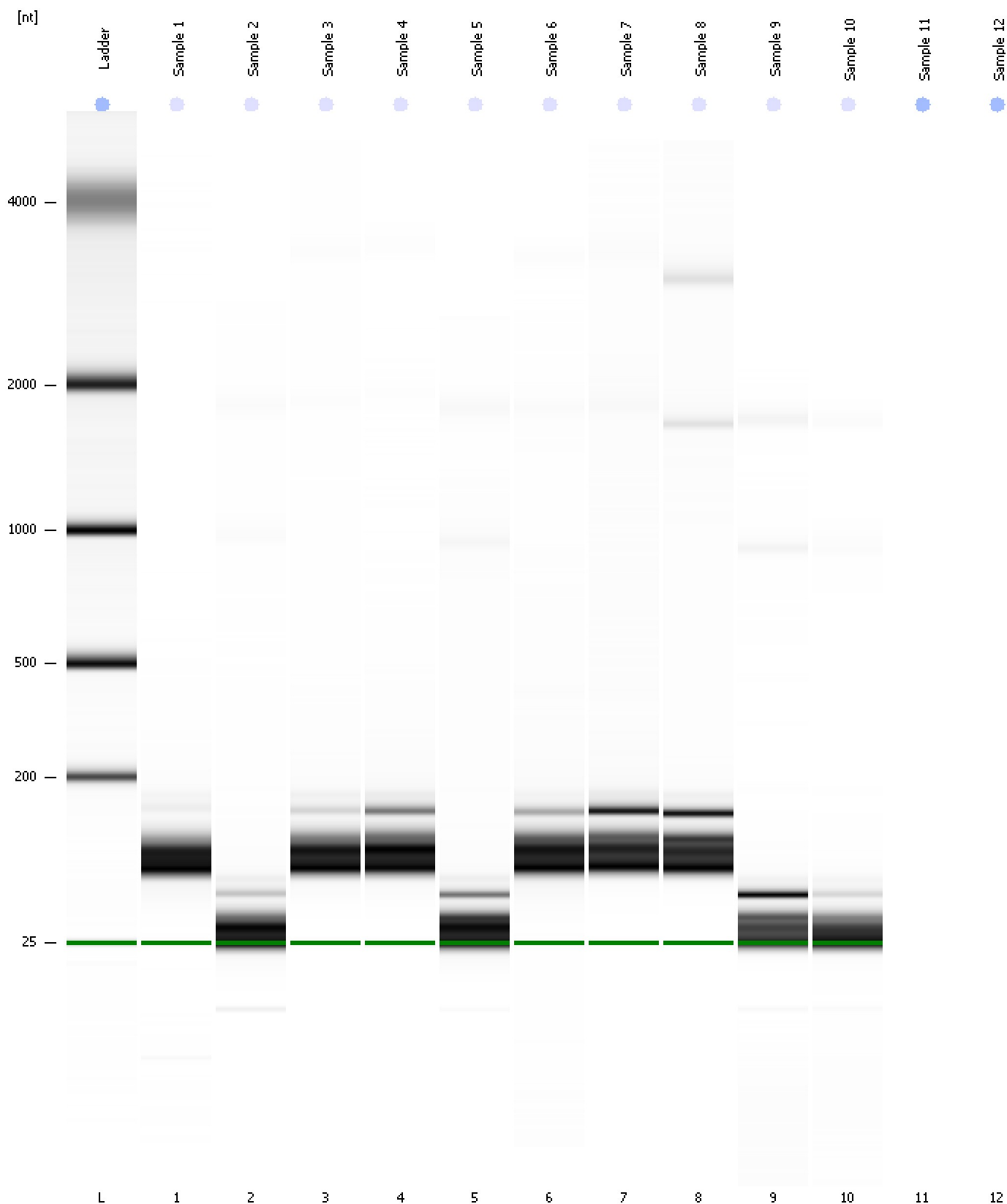
**Fragment table for sample 10 : Sample 10**

Name	Start Size [nt]	End Size [nt]	Area	% of total Area
18S	902	952	0.5	1.1
28S	1,694	1,859	1.5	3.2

Assay Class: Eukaryote Total RNA Nano  
Data Path: C:\...ents and Settings\Bioanalyzer\2013-10-02\2013-10-02\_001.xad

Created: 10/2/2013 9:53:31 AM  
Modified: 10/2/2013 10:14:36 AM

**Gel Image**



Assay Class: Eukaryote Total RNA Nano  
Data Path: C:\...ents and Settings\Bioanalyzer\2013-10-02\2013-10-02\_001.xad

Created: 10/2/2013 9:53:31 AM  
Modified: 10/2/2013 10:14:36 AM

**Invalid Samples**

Sample 11 has not been run, no results available.

Sample 12 has not been run, no results available.