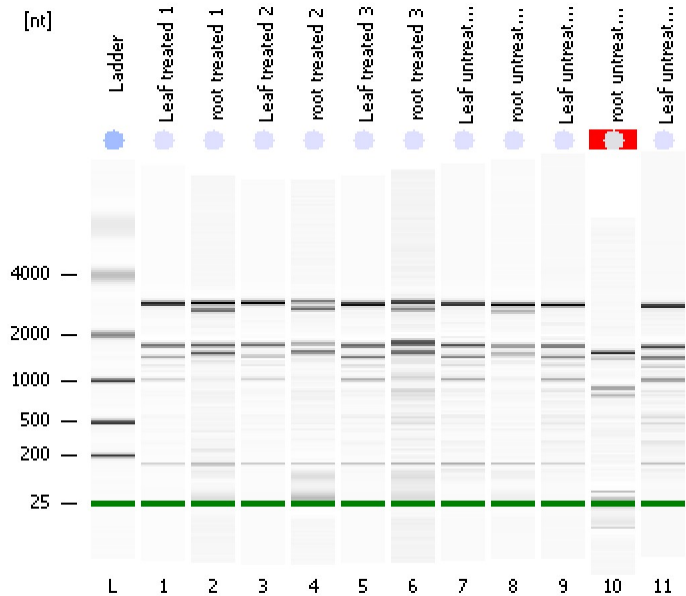


Assay Class: Eukaryote Total RNA Pico
Data Path: C:\...ents and Settings\Bioanalyzer\2013-10-07\2013-10-07_004.xad

Created: 10/7/2013 2:33:08 PM
Modified: 10/7/2013 3:41:41 PM

Electrophoresis File Run Summary



Instrument Information:

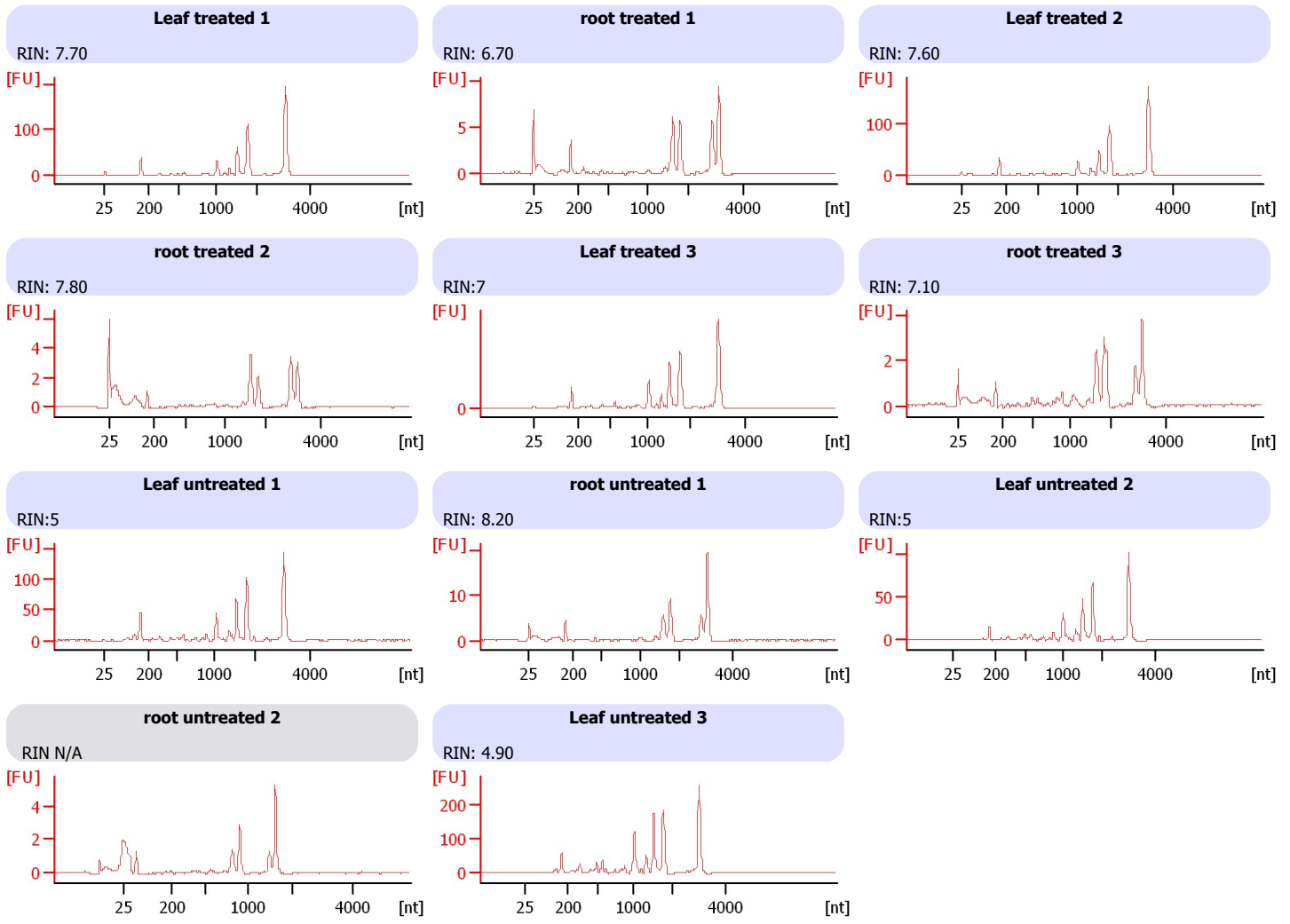
Instrument Name: DE13701086 Firmware: C.01.069
Serial#: DE13701086 Type: G2938B

Assay Information:

Assay Origin Path: C:\Program Files\Agilent\2100 bioanalyzer\2100 expert\assays\RNA\Eukaryote Total RNA Pico Series II.xsy
Assay Class: Eukaryote Total RNA Pico
Version: 2.6
Assay Comments: Total RNA Analysis pg sensitivity (Eukaryote)
© Copyright 2003 - 2009 Agilent Technologies, Inc.

Chip Information:

Chip Lot #:
Reagent Kit Lot #:
Chip Comments:



Assay Class: Eukaryote Total RNA Pico
 Data Path: C:\...ents and Settings\Bioanalyzer\2013-10-07\2013-10-07_004.xad

Created: 10/7/2013 2:33:08 PM
 Modified: 10/7/2013 3:41:41 PM

Electrophoresis File Run Summary (Chip Summary)

Sample Name	Sample Comment	Status	Result Label	Result Color
Leaf treated 1		✓	RIN: 7.70	
root treated 1		✓	RIN: 6.70	
Leaf treated 2		✓	RIN: 7.60	
root treated 2		✓	RIN: 7.80	
Leaf treated 3		✓	RIN:7	
root treated 3		✓	RIN: 7.10	
Leaf untreated 1		✓	RIN:5	
root untreated 1		✓	RIN: 8.20	
Leaf untreated 2		✓	RIN:5	
root untreated 2		✓	RIN N/A	
Leaf untreated 3		✓	RIN: 4.90	
Ladder		✓	All Other Samples	

Chip Lot #

Reagent Kit Lot #

Chip Comments :

Assay Class: Eukaryote Total RNA Pico
Data Path: C:\...ents and Settings\Bioanalyzer\2013-10-07\2013-10-07_004.xad

Created: 10/7/2013 2:33:08 PM
Modified: 10/7/2013 3:41:41 PM

Electrophoresis Assay Details

General Analysis Settings

Number of Available Sample and Ladder Wells (Max.) : 12
Minimum Visible Range [s] : 17
Maximum Visible Range [s] : 70
Start Analysis Time Range [s] : 18
End Analysis Time Range [s] : 69
Ladder Concentration [pg/μl] : 1000
Lower Marker Concentration [pg/μl] : 0
Upper Marker Concentration [pg/μl] : 0
Used Lower Marker for Quantitation
Standard Curve Fit is Logarithmic
Show Data Aligned to Lower Marker

Integrator Settings

Integration Start Time [s] : 18
Integration End Time [s] : 69
Slope Threshold : 0.6
Height Threshold [FU] : 0.5
Area Threshold : 0.2
Width Threshold [s] : 0.3
Baseline Plateau [s] : 6

Filter Settings

Filter Width [s] : 0.5
Polynomial Order : 4

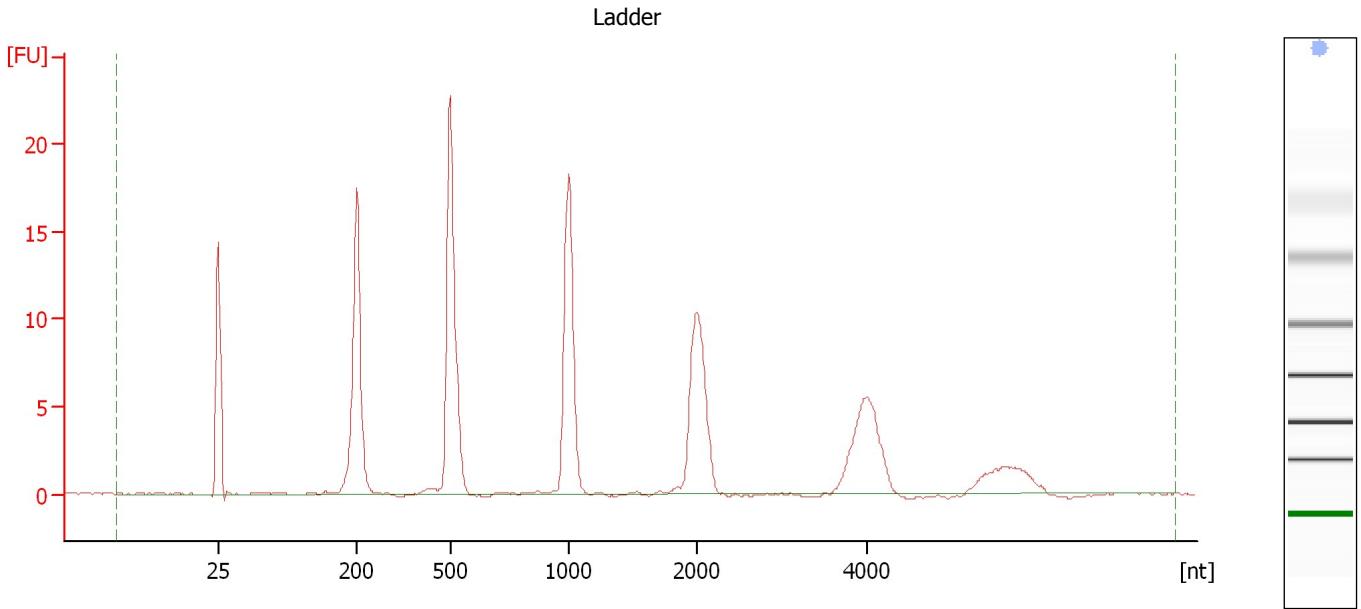
Ladder

Ladder Peak	Size
1	25
2	200
3	500
4	1000
5	2000
6	4000

Assay Class: Eukaryote Total RNA Pico
Data Path: C:\...ents and Settings\Bioanalyzer\2013-10-07\2013-10-07_004.xad

Created: 10/7/2013 2:33:08 PM
Modified: 10/7/2013 3:41:41 PM

Electropherogram Summary



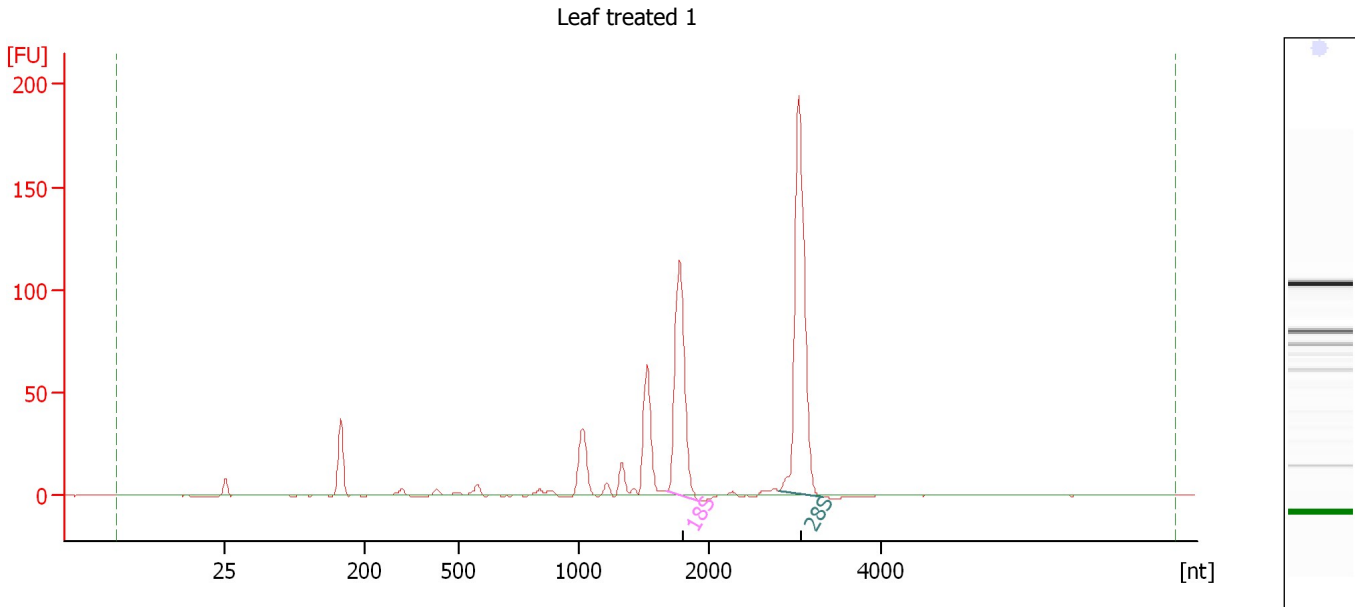
Overall Results for Ladder

RNA Area:	116.4	Result Flagging Color:	
RNA Concentration:	1,000 pg/μl	Result Flagging Label:	All Other Samples

Assay Class: Eukaryote Total RNA Pico
 Data Path: C:\...ents and Settings\Bioanalyzer\2013-10-07\2013-10-07_004.xad

Created: 10/7/2013 2:33:08 PM
 Modified: 10/7/2013 3:41:41 PM

Electropherogram Summary Continued ...



Overall Results for sample 1 : Leaf treated 1

RNA Area:	512.4	RNA Integrity Number (RIN):	7.7 (B.02.08, Anomaly Threshold(s) manually adapted)
RNA Concentration:	4,404 pg/μl	Result Flagging Color:	
rRNA Ratio [28s / 18s]:	1.5	Result Flagging Label:	RIN: 7.70

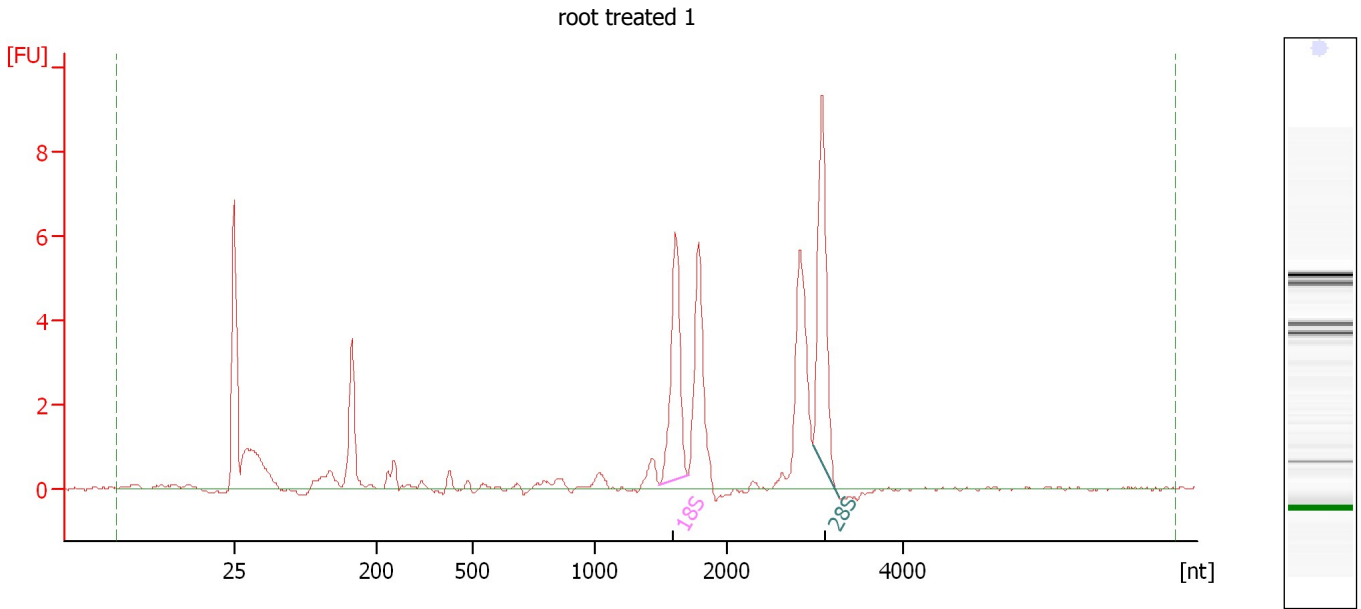
Fragment table for sample 1 : Leaf treated 1

Name	Start Size [nt]	End Size [nt]	Area	% of total Area
18S	1,680	1,929	129.0	25.2
28S	2,813	3,335	196.5	38.4

Assay Class: Eukaryote Total RNA Pico
Data Path: C:\...ents and Settings\Bioanalyzer\2013-10-07\2013-10-07_004.xad

Created: 10/7/2013 2:33:08 PM
Modified: 10/7/2013 3:41:41 PM

Electropherogram Summary Continued ...



Overall Results for sample 2 : root treated 1

RNA Area:	40.4	RNA Integrity Number (RIN):	6.7 (B.02.08, Anomaly Threshold(s) manually adapted)
RNA Concentration:	347 pg/μl	Result Flagging Color:	
rRNA Ratio [28s / 18s]:	1.2	Result Flagging Label:	RIN: 6.70

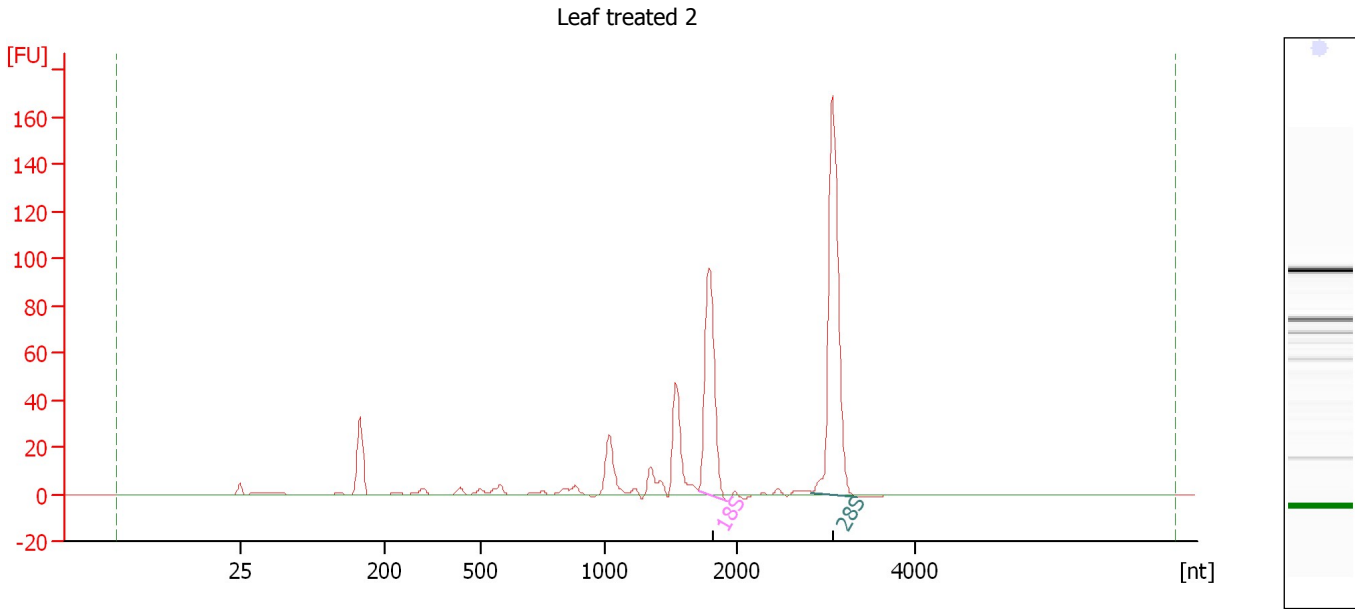
Fragment table for sample 2 : root treated 1

Name	Start Size [nt]	End Size [nt]	Area	% of total Area
18S	1,487	1,707	6.1	15.0
28S	2,978	3,271	7.4	18.2

Assay Class: Eukaryote Total RNA Pico
Data Path: C:\...ents and Settings\Bioanalyzer\2013-10-07\2013-10-07_004.xad

Created: 10/7/2013 2:33:08 PM
Modified: 10/7/2013 3:41:41 PM

Electropherogram Summary Continued ...



Overall Results for sample 3 : Leaf treated 2

RNA Area: 423.9 RNA Integrity Number (RIN): 7.6 (B.02.08, Anomaly Threshold(s) manually adapted)
RNA Concentration: 3,643 pg/μl
rRNA Ratio [28s / 18s]: 1.6
Result Flagging Color:
Result Flagging Label: RIN: 7.60

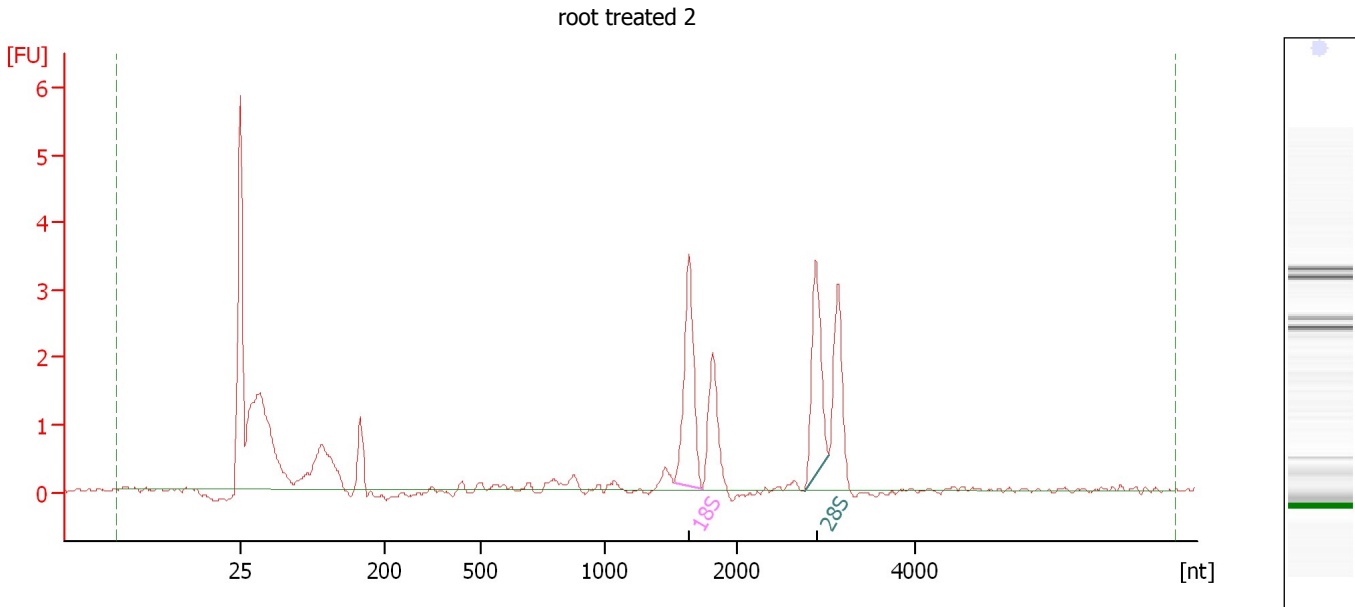
Fragment table for sample 3 : Leaf treated 2

Name	Start Size [nt]	End Size [nt]	Area	% of total Area
18S	1,705	1,923	103.9	24.5
28S	2,840	3,347	166.1	39.2

Assay Class: Eukaryote Total RNA Pico
Data Path: C:\...ents and Settings\Bioanalyzer\2013-10-07\2013-10-07_004.xad

Created: 10/7/2013 2:33:08 PM
Modified: 10/7/2013 3:41:41 PM

Electropherogram Summary Continued ...



Overall Results for sample 4 : root treated 2

RNA Area: 24.5 RNA Integrity Number (RIN): 7.8 (B.02.08)
RNA Concentration: 211 pg/μl Result Flagging Color:
rRNA Ratio [28s / 18s]: 0.8 Result Flagging Label: RIN: 7.80

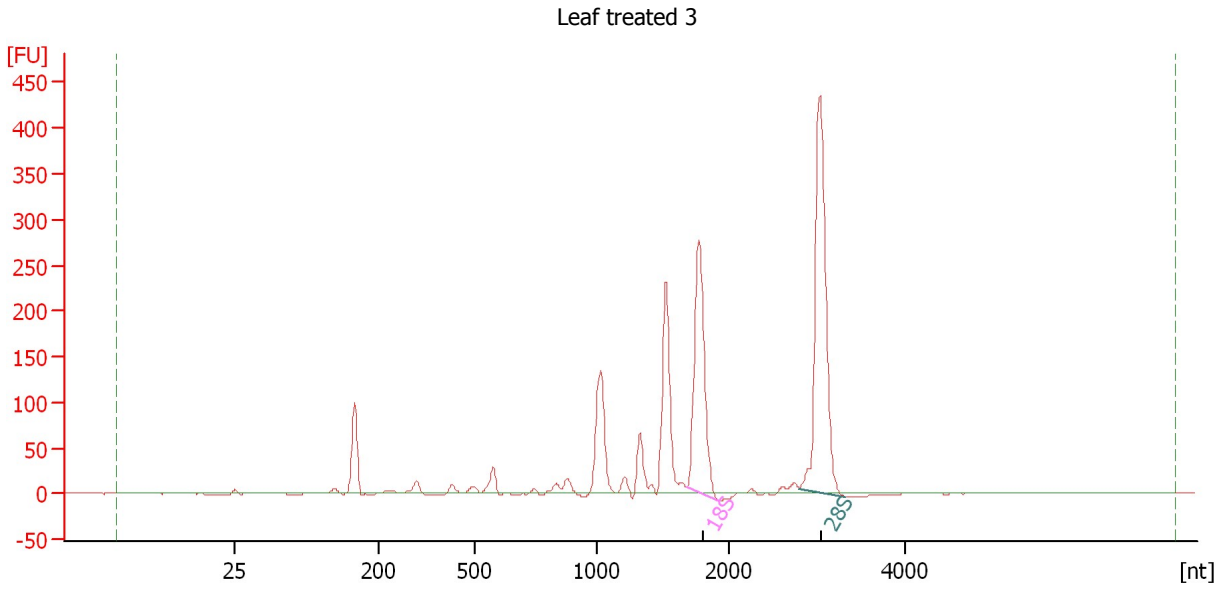
Fragment table for sample 4 : root treated 2

Name	Start Size [nt]	End Size [nt]	Area	% of total Area
18S	1,528	1,738	3.7	15.3
28S	2,755	3,033	2.9	12.0

Assay Class: Eukaryote Total RNA Pico
 Data Path: C:\...ents and Settings\Bioanalyzer\2013-10-07\2013-10-07_004.xad

Created: 10/7/2013 2:33:08 PM
 Modified: 10/7/2013 3:41:41 PM

Electropherogram Summary Continued ...



Overall Results for sample 5 : Leaf treated 3

RNA Area:	1,465.8	RNA Integrity Number (RIN):	7 (B.02.08, Anomaly Threshold(s) manually adapted)
RNA Concentration:	12,597 pg/μl		
rRNA Ratio [28s / 18s]:	1.4	Result Flagging Color:	
		Result Flagging Label:	RIN:7

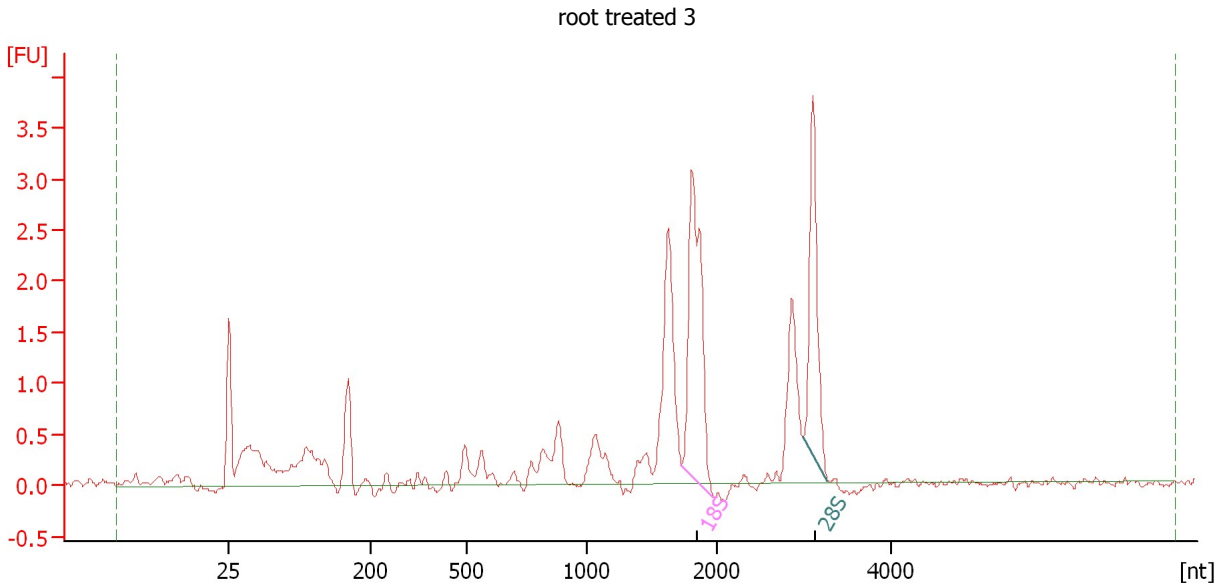
Fragment table for sample 5 : Leaf treated 3

Name	Start Size [nt]	End Size [nt]	Area	% of total Area
18S	1,684	1,920	326.2	22.3
28S	2,806	3,318	461.6	31.5

Assay Class: Eukaryote Total RNA Pico
 Data Path: C:\...ents and Settings\Bioanalyzer\2013-10-07\2013-10-07_004.xad

Created: 10/7/2013 2:33:08 PM
 Modified: 10/7/2013 3:41:41 PM

Electropherogram Summary Continued ...



Overall Results for sample 6 : root treated 3

RNA Area:	22.8	RNA Integrity Number (RIN):	7.1 (B.02.08, Anomaly Threshold(s) manually adapted)
RNA Concentration:	196 µg/µl	Result Flagging Color:	
rRNA Ratio [28s / 18s]:	0.6	Result Flagging Label:	RIN: 7.10

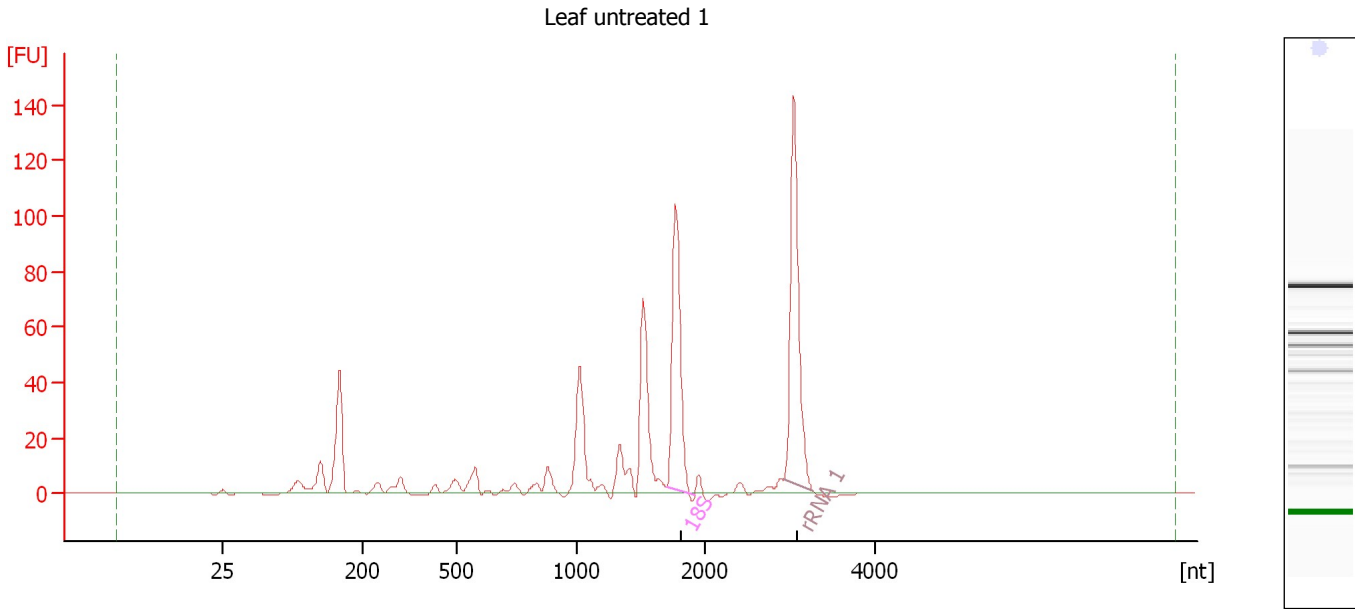
Fragment table for sample 6 : root treated 3

Name	Start Size [nt]	End Size [nt]	Area	% of total Area
18S	1,726	1,973	4.3	19.0
28S	2,995	3,279	2.8	12.2

Assay Class: Eukaryote Total RNA Pico
Data Path: C:\...ents and Settings\Bioanalyzer\2013-10-07\2013-10-07_004.xad

Created: 10/7/2013 2:33:08 PM
Modified: 10/7/2013 3:41:41 PM

Electropherogram Summary Continued ...



Overall Results for sample 7 : Leaf untreated 1

RNA Area: 510.9 RNA Integrity Number (RIN): 5 (B.02.08)
RNA Concentration: 4,390 pg/μl Result Flagging Color:
rRNA Ratio [28s / 18s]: 0.0 Result Flagging Label: RIN:5

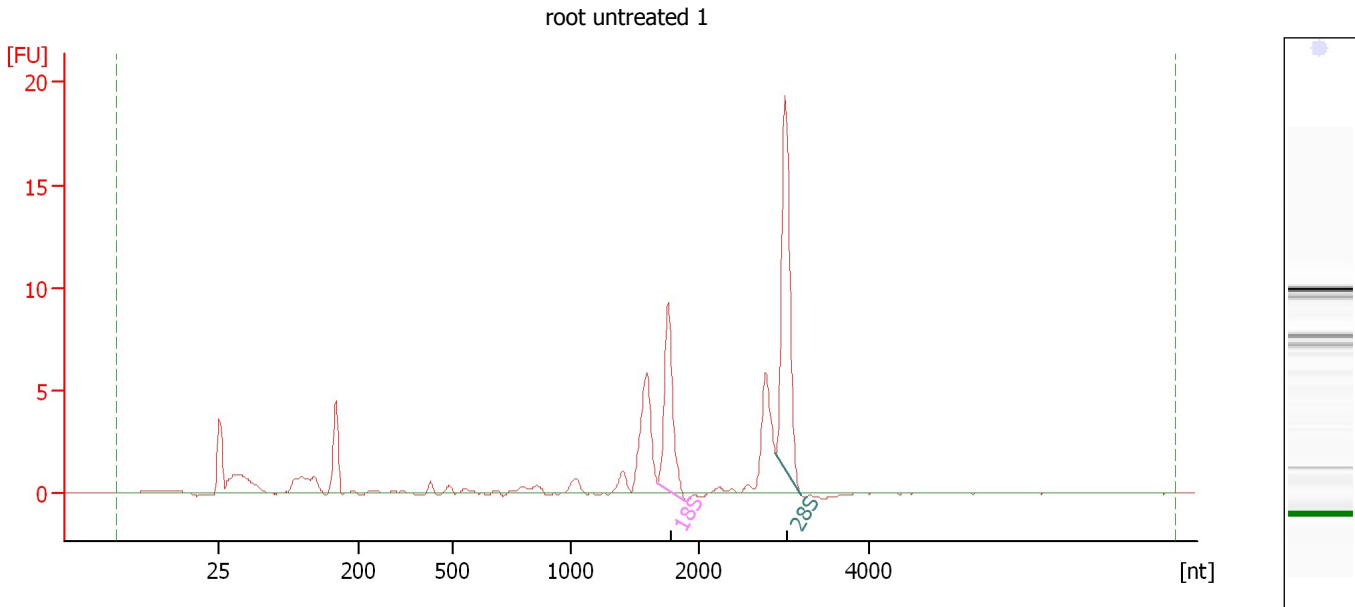
Fragment table for sample 7 : Leaf untreated 1

Name	Start Size [nt]	End Size [nt]	Area	% of total Area
18S	1,705	1,920	96.9	19.0
rRNA 1	2,917	3,275	123.9	24.2

Assay Class: Eukaryote Total RNA Pico
 Data Path: C:\...ents and Settings\Bioanalyzer\2013-10-07\2013-10-07_004.xad

Created: 10/7/2013 2:33:08 PM
 Modified: 10/7/2013 3:41:41 PM

Electropherogram Summary Continued ...



Overall Results for sample 8 : root untreated 1

RNA Area:	58.9	RNA Integrity Number (RIN):	8.2 (B.02.08, Anomaly Threshold(s) manually adapted)
RNA Concentration:	506 µg/µl		
rRNA Ratio [28s / 18s]:	1.6	Result Flagging Color:	
		Result Flagging Label:	RIN: 8.20

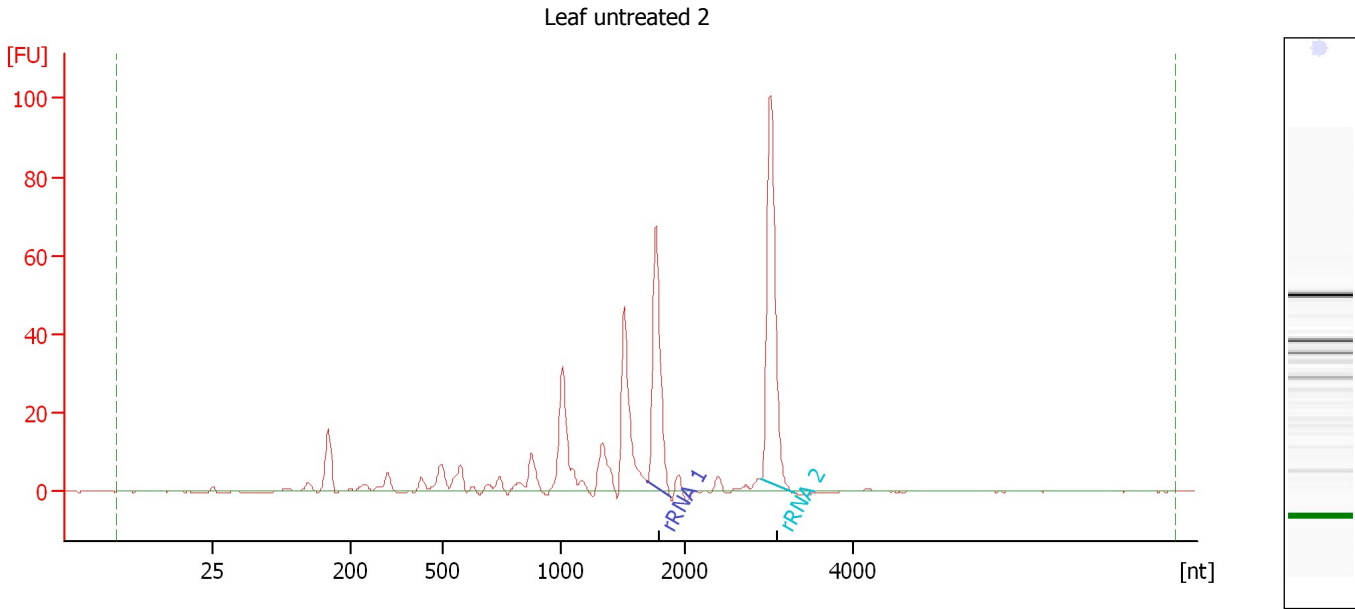
Fragment table for sample 8 : root untreated 1

Name	Start Size [nt]	End Size [nt]	Area	% of total Area
18S	1,681	1,900	9.4	15.9
28S	2,904	3,206	15.2	25.9

Assay Class: Eukaryote Total RNA Pico
Data Path: C:\...ents and Settings\Bioanalyzer\2013-10-07\2013-10-07_004.xad

Created: 10/7/2013 2:33:08 PM
Modified: 10/7/2013 3:41:41 PM

Electropherogram Summary Continued ...



Overall Results for sample 9 : Leaf untreated 2

RNA Area: 334.7 RNA Integrity Number (RIN): 5 (B.02.08)
RNA Concentration: 2,877 pg/μl Result Flagging Color:
rRNA Ratio [28s / 18s]: 0.0 Result Flagging Label: RIN:5

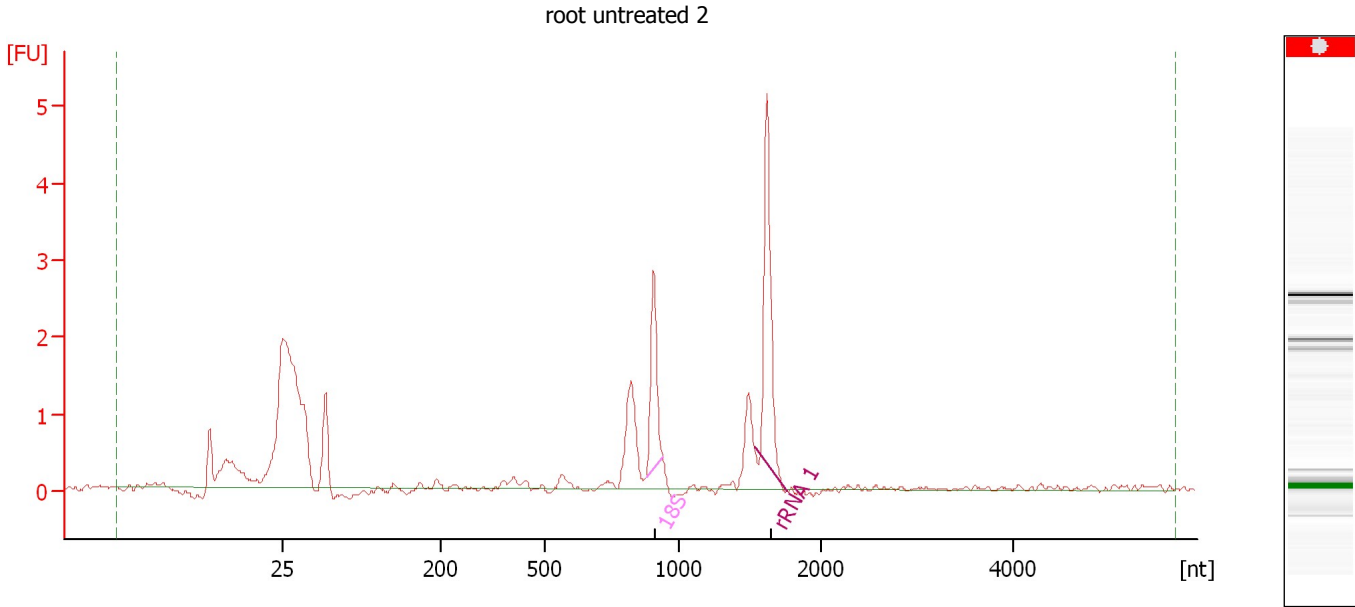
Fragment table for sample 9 : Leaf untreated 2

Name	Start Size [nt]	End Size [nt]	Area	% of total Area
rRNA 1	1,682	1,874	61.8	18.5
rRNA 2	2,886	3,292	85.2	25.5

Assay Class: Eukaryote Total RNA Pico
 Data Path: C:\...ents and Settings\Bioanalyzer\2013-10-07\2013-10-07_004.xad

Created: 10/7/2013 2:33:08 PM
 Modified: 10/7/2013 3:41:41 PM

Electropherogram Summary Continued ...



Setpoint Deviations for sample 10 : root untreated 2

Height Threshold [FU] : 0.1

Overall Results for sample 10 : root untreated 2

RNA Area:	13.4	RNA Integrity Number (RIN):	N/A (B.02.08)
RNA Concentration:	115 pg/μl	Result Flagging Color:	
rRNA Ratio [28s / 18s]:	0.0	Result Flagging Label:	RIN N/A

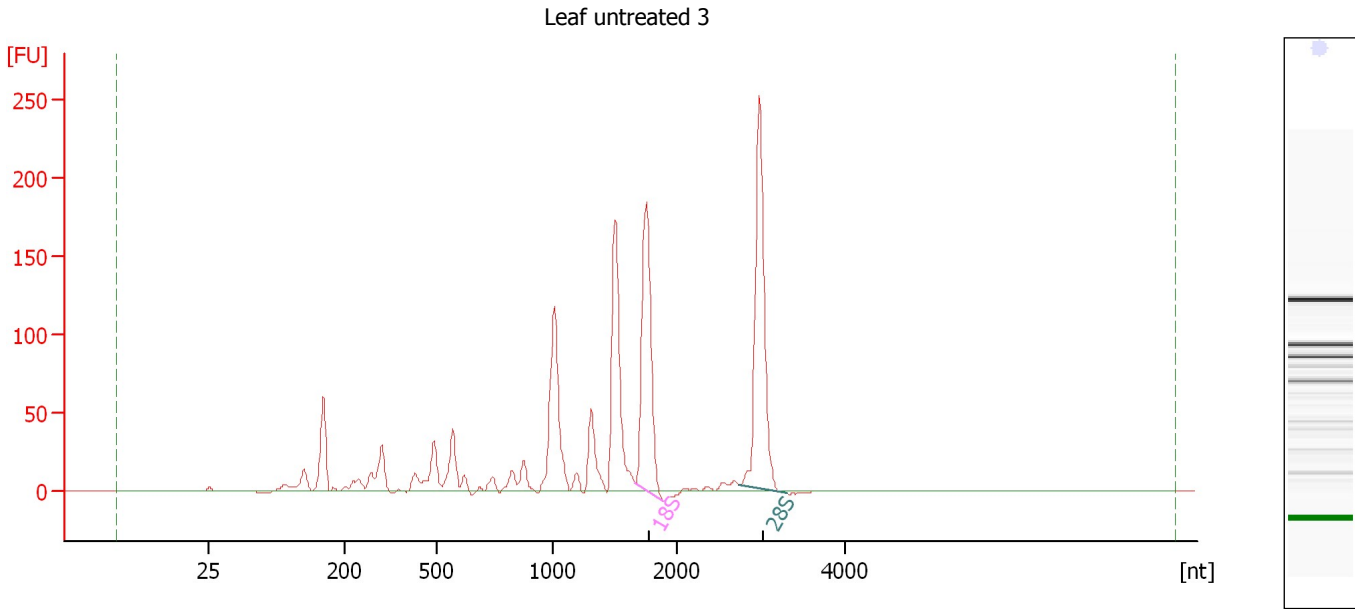
Fragment table for sample 10 : root untreated 2

Name	Start Size [nt]	End Size [nt]	Area	% of total Area
18S	879	939	1.9	14.3
rRNA 1	1,532	1,756	3.5	25.8

Assay Class: Eukaryote Total RNA Pico
Data Path: C:\...ents and Settings\Bioanalyzer\2013-10-07\2013-10-07_004.xad

Created: 10/7/2013 2:33:08 PM
Modified: 10/7/2013 3:41:41 PM

Electropherogram Summary Continued ...



Overall Results for sample 11 : Leaf untreated 3

RNA Area: 1,097.2 RNA Integrity Number (RIN): 4.9 (B.02.08)
RNA Concentration: 9,429 pg/μl Result Flagging Color:
rRNA Ratio [28s / 18s]: 1.2 Result Flagging Label: RIN: 4.90

Fragment table for sample 11 : Leaf untreated 3

Name	Start Size [nt]	End Size [nt]	Area	% of total Area
18S	1,660	1,882	201.7	18.4
28S	2,747	3,311	244.6	22.3

Assay Class: Eukaryote Total RNA Pico
Data Path: C:\...ents and Settings\Bioanalyzer\2013-10-07\2013-10-07_004.xad

Created: 10/7/2013 2:33:08 PM
Modified: 10/7/2013 3:41:41 PM

Gel Image

