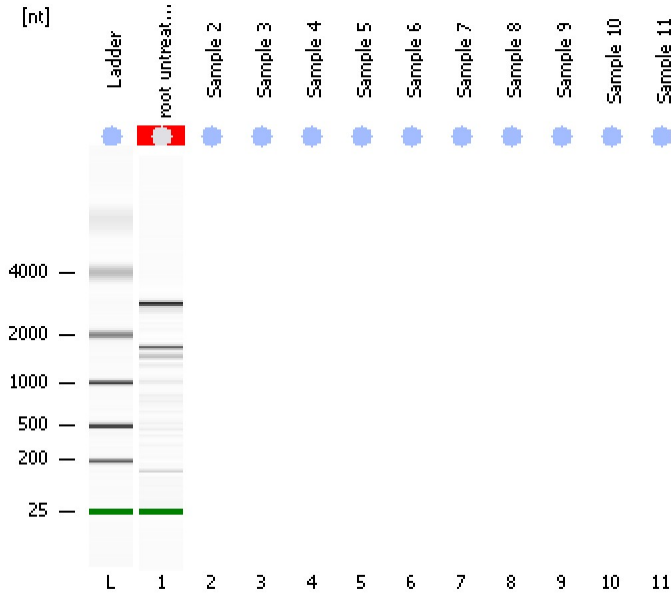


Assay Class: Eukaryote Total RNA Pico  
Data Path: C:\...ents and Settings\Bioanalyzer\2013-10-07\2013-10-07\_005.xad

Created: 10/7/2013 3:19:48 PM  
Modified: 10/7/2013 3:29:16 PM

**Electrophoresis File Run Summary**



Instrument Information:

Instrument Name: DE13701086      Firmware: C.01.069  
Serial#: DE13701086      Type: G2938B

Assay Information:

Assay Origin Path: C:\Program Files\Agilent\2100 bioanalyzer\2100 expert\assays\RNA\Eukaryote Total RNA Pico Series II.xsy

Assay Class: Eukaryote Total RNA Pico

Version: 2.6

Assay Comments: Total RNA Analysis pg sensitivity (Eukaryote)

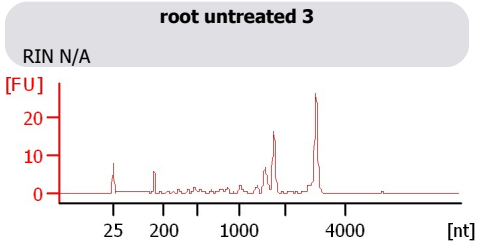
© Copyright 2003 - 2009 Agilent Technologies, Inc.

Chip Information:

Chip Lot #:

Reagent Kit Lot #:

Chip Comments:



Assay Class: Eukaryote Total RNA Pico  
Data Path: C:\...ents and Settings\Bioanalyzer\2013-10-07\2013-10-07\_005.xad

Created: 10/7/2013 3:19:48 PM  
Modified: 10/7/2013 3:29:16 PM

**Electrophoresis File Run Summary (Chip Summary)**

Sample Name	Sample Comment	Status	Result Label	Result Color
root untreated 3		✓	RIN N/A	
Sample 2				
Sample 3				
Sample 4				
Sample 5				
Sample 6				
Sample 7				
Sample 8				
Sample 9				
Sample 10				
Sample 11				
Ladder		✓	All Other Samples	

**Chip Lot #**

**Reagent Kit Lot #**

**Chip Comments :**

Assay Class: Eukaryote Total RNA Pico  
Data Path: C:\...ents and Settings\Bioanalyzer\2013-10-07\2013-10-07\_005.xad

Created: 10/7/2013 3:19:48 PM  
Modified: 10/7/2013 3:29:16 PM

## Electrophoresis Assay Details

### General Analysis Settings

Number of Available Sample and Ladder Wells (Max.) : 12  
Minimum Visible Range [s] : 17  
Maximum Visible Range [s] : 70  
Start Analysis Time Range [s] : 18  
End Analysis Time Range [s] : 69  
Ladder Concentration [pg/ $\mu$ l] : 1000  
Lower Marker Concentration [pg/ $\mu$ l] : 0  
Upper Marker Concentration [pg/ $\mu$ l] : 0  
Used Lower Marker for Quantitation  
Standard Curve Fit is Logarithmic  
Show Data Aligned to Lower Marker

### Integrator Settings

Integration Start Time [s] : 18  
Integration End Time [s] : 69  
Slope Threshold : 0.6  
Height Threshold [FU] : 0.5  
Area Threshold : 0.2  
Width Threshold [s] : 0.3  
Baseline Plateau [s] : 6

### Filter Settings

Filter Width [s] : 0.5  
Polynomial Order : 4

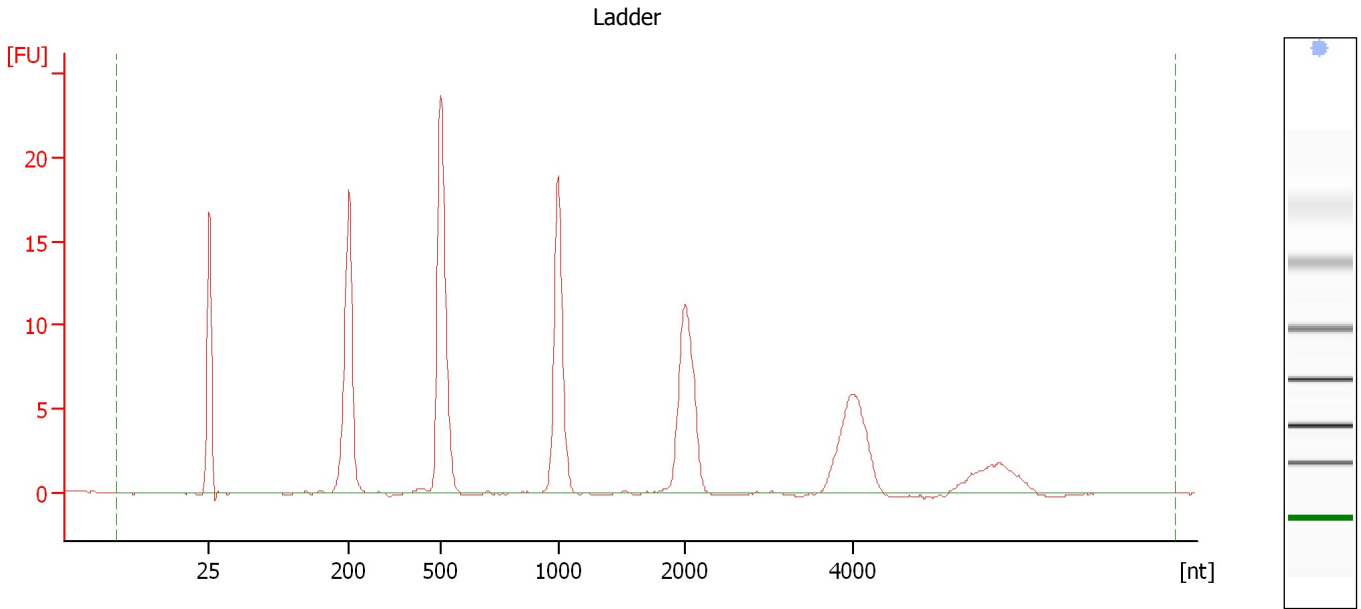
### Ladder

Ladder Peak	Size
1	25
2	200
3	500
4	1000
5	2000
6	4000

Assay Class: Eukaryote Total RNA Pico  
Data Path: C:\...ents and Settings\Bioanalyzer\2013-10-07\2013-10-07\_005.xad

Created: 10/7/2013 3:19:48 PM  
Modified: 10/7/2013 3:29:16 PM

**Electropherogram Summary**



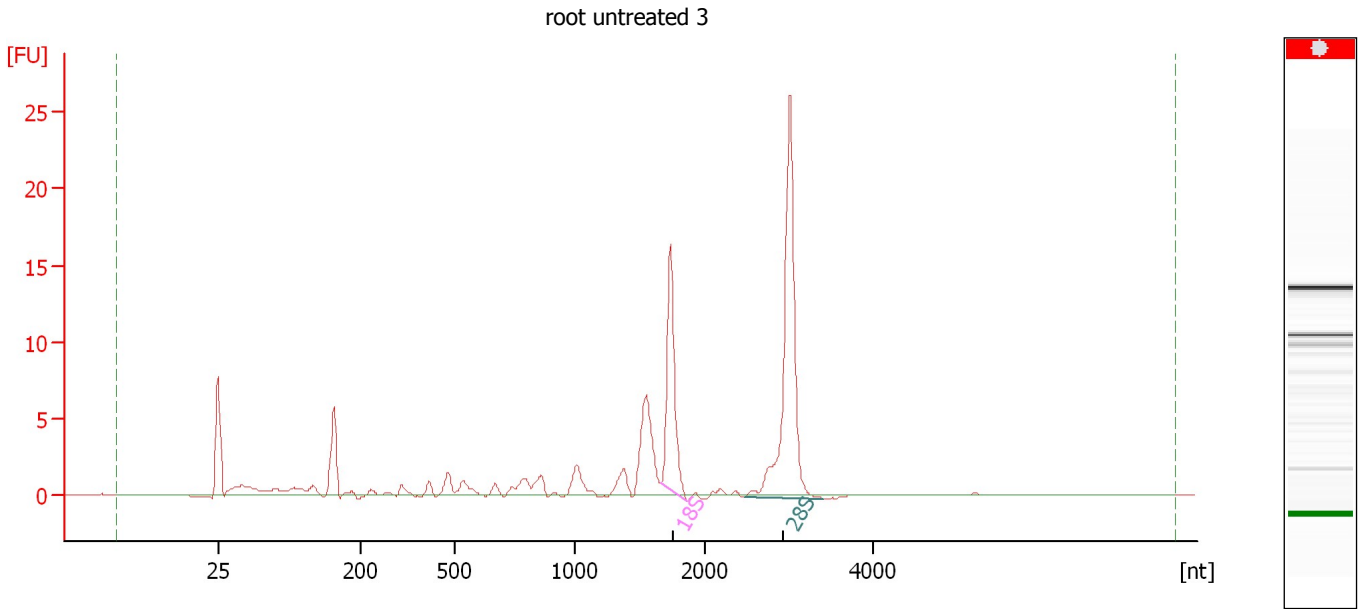
**Overall Results for Ladder**

RNA Area:	121.1	Result Flagging Color:	<span style="background-color: #add8e6; border: 1px solid black; display: inline-block; width: 20px; height: 10px;"></span>
RNA Concentration:	1,000 pg/μl	Result Flagging Label:	All Other Samples

Assay Class: Eukaryote Total RNA Pico  
Data Path: C:\...ents and Settings\Bioanalyzer\2013-10-07\2013-10-07\_005.xad

Created: 10/7/2013 3:19:48 PM  
Modified: 10/7/2013 3:29:16 PM

**Electropherogram Summary Continued ...**



**Overall Results for sample 1 : root untreated 3**

RNA Area: 77.3                      RNA Integrity Number (RIN): N/A (B.02.08)  
RNA Concentration: 638 µg/µl              Result Flagging Color:   
rRNA Ratio [28s / 18s]: 2.0              Result Flagging Label: RIN N/A

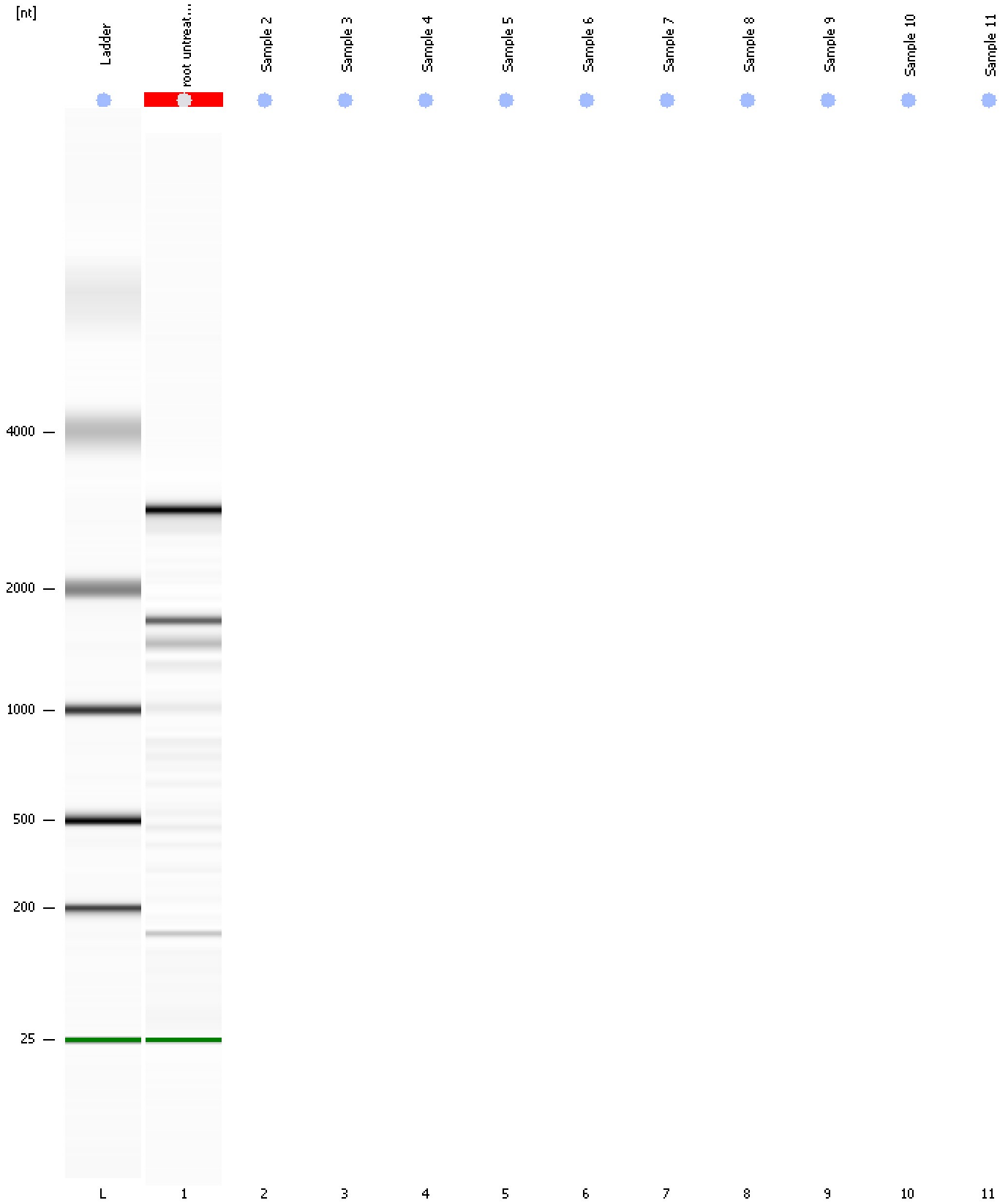
**Fragment table for sample 1 : root untreated 3**

Name	Start Size [nt]	End Size [nt]	Area	% of total Area
18S	1,666	1,872	14.4	18.6
28S	2,472	3,403	28.5	36.9

Assay Class: Eukaryote Total RNA Pico  
Data Path: C:\...ents and Settings\Bioanalyzer\2013-10-07\2013-10-07\_005.xad

Created: 10/7/2013 3:19:48 PM  
Modified: 10/7/2013 3:29:16 PM

**Gel Image**



Assay Class: Eukaryote Total RNA Pico  
Data Path: C:\...ents and Settings\Bioanalyzer\2013-10-07\2013-10-07\_005.xad

Created: 10/7/2013 3:19:48 PM  
Modified: 10/7/2013 3:29:16 PM

**Invalid Samples**

Sample 2 has not been run, no results available.

Sample 3 has not been run, no results available.

Sample 4 has not been run, no results available.

Sample 5 has not been run, no results available.

Sample 6 has not been run, no results available.

Sample 7 has not been run, no results available.

Sample 8 has not been run, no results available.

Sample 9 has not been run, no results available.

Sample 10 has not been run, no results available.

Sample 11 has not been run, no results available.