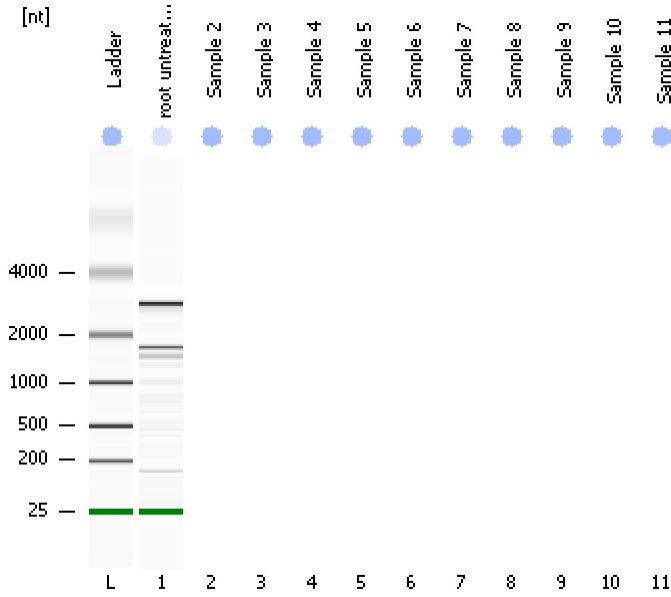


Assay Class: Eukaryote Total RNA Pico  
Data Path: C:\...ents and Settings\Bioanalyzer\2013-10-07\2013-10-07\_005.xad

Created: 10/7/2013 3:19:48 PM  
Modified: 10/7/2013 3:43:00 PM

**Electrophoresis File Run Summary**



Instrument Information:

Instrument Name: DE13701086      Firmware: C.01.069  
Serial#: DE13701086      Type: G2938B

Assay Information:

Assay Origin Path: C:\Program Files\Agilent\2100 bioanalyzer\2100 expert\assays\RNA\Eukaryote Total RNA Pico Series II.xsy

Assay Class: Eukaryote Total RNA Pico

Version: 2.6

Assay Comments: Total RNA Analysis pg sensitivity (Eukaryote)

© Copyright 2003 - 2009 Agilent Technologies, Inc.

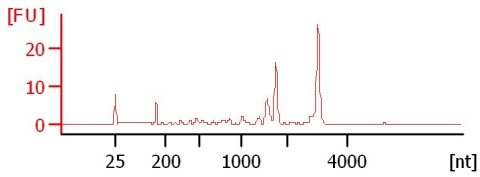
Chip Information:

Chip Lot #:

Reagent Kit Lot #:

Chip Comments:

**root untreated 3**  
RIN: 7.70



Assay Class: Eukaryote Total RNA Pico  
 Data Path: C:\...ents and Settings\Bioanalyzer\2013-10-07\2013-10-07\_005.xad

Created: 10/7/2013 3:19:48 PM  
 Modified: 10/7/2013 3:43:00 PM

**Electrophoresis File Run Summary (Chip Summary)**

Sample Name	Sample Comment	Status	Result Label	Result Color
root untreated 3		✓	RIN: 7.70	
Sample 2				
Sample 3				
Sample 4				
Sample 5				
Sample 6				
Sample 7				
Sample 8				
Sample 9				
Sample 10				
Sample 11				
Ladder		✓	All Other Samples	

**Chip Lot #**

**Reagent Kit Lot #**

**Chip Comments :**

Assay Class: Eukaryote Total RNA Pico  
Data Path: C:\...ents and Settings\Bioanalyzer\2013-10-07\2013-10-07\_005.xad

Created: 10/7/2013 3:19:48 PM  
Modified: 10/7/2013 3:43:00 PM

**Electrophoresis Assay Details**

**General Analysis Settings**

Number of Available Sample and Ladder Wells (Max.) : 12  
Minimum Visible Range [s] : 17  
Maximum Visible Range [s] : 70  
Start Analysis Time Range [s] : 18  
End Analysis Time Range [s] : 69  
Ladder Concentration [pg/μl] : 1000  
Lower Marker Concentration [pg/μl] : 0  
Upper Marker Concentration [pg/μl] : 0  
Used Lower Marker for Quantitation  
Standard Curve Fit is Logarithmic  
Show Data Aligned to Lower Marker

**Integrator Settings**

Integration Start Time [s] : 18  
Integration End Time [s] : 69  
Slope Threshold : 0.6  
Height Threshold [FU] : 0.5  
Area Threshold : 0.2  
Width Threshold [s] : 0.3  
Baseline Plateau [s] : 6

**Filter Settings**

Filter Width [s] : 0.5  
Polynomial Order : 4

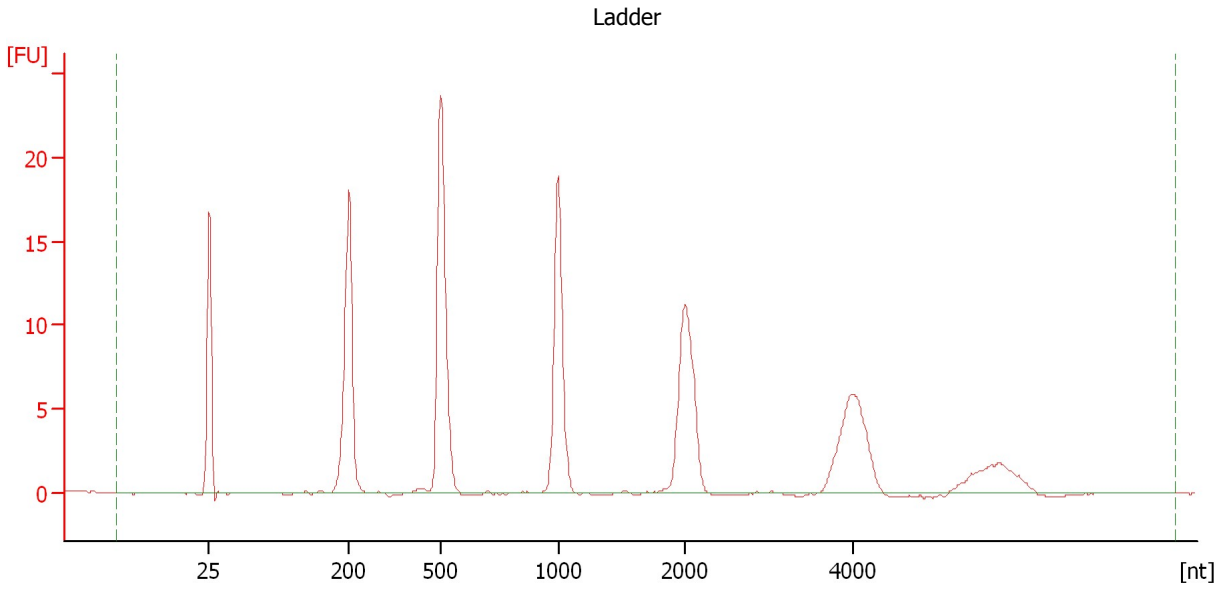
**Ladder**

Ladder Peak	Size
1	25
2	200
3	500
4	1000
5	2000
6	4000

Assay Class: Eukaryote Total RNA Pico  
Data Path: C:\...ents and Settings\Bioanalyzer\2013-10-07\2013-10-07\_005.xad

Created: 10/7/2013 3:19:48 PM  
Modified: 10/7/2013 3:43:00 PM

**Electropherogram Summary**



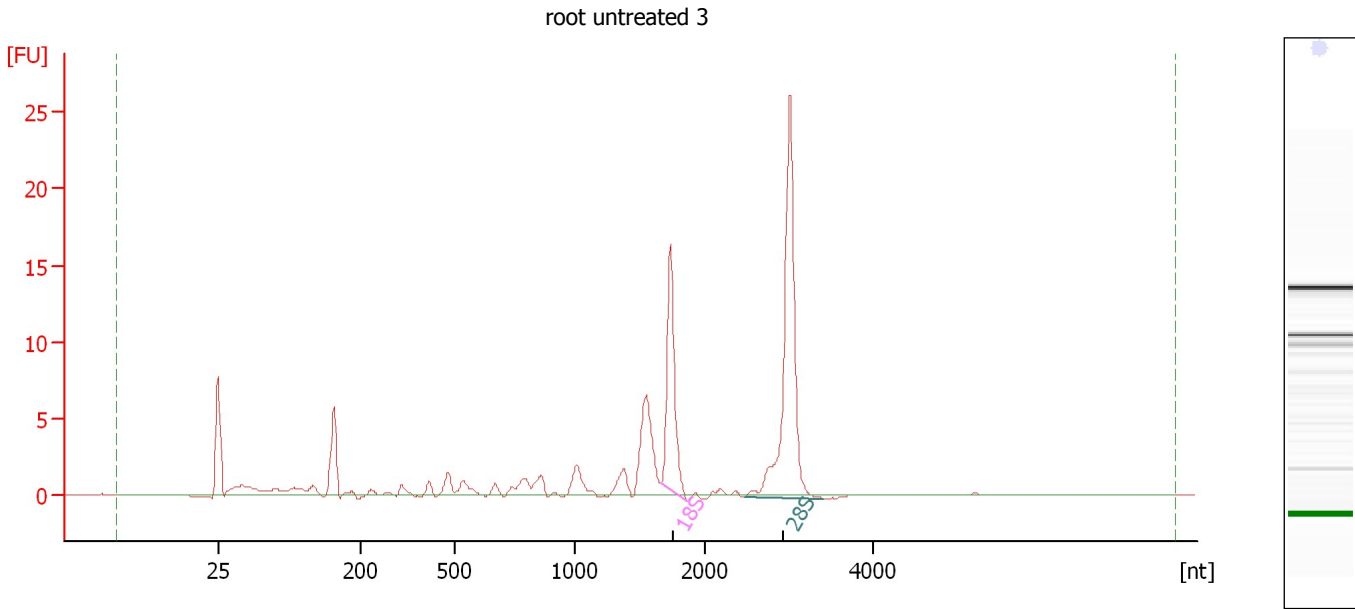
**Overall Results for Ladder**

RNA Area:	121.1	Result Flagging Color:	<span style="background-color: #add8e6; border: 1px solid black; display: inline-block; width: 20px; height: 10px;"></span>
RNA Concentration:	1,000 pg/μl	Result Flagging Label:	All Other Samples

Assay Class: Eukaryote Total RNA Pico  
Data Path: C:\...ents and Settings\Bioanalyzer\2013-10-07\2013-10-07\_005.xad

Created: 10/7/2013 3:19:48 PM  
Modified: 10/7/2013 3:43:00 PM

**Electropherogram Summary Continued ...**



**Overall Results for sample 1 : root untreated 3**

RNA Area:	77.3	RNA Integrity Number (RIN):	7.7 (B.02.08, Anomaly Threshold(s) manually adapted)
RNA Concentration:	638 µg/µl		
rRNA Ratio [28s / 18s]:	2.0	Result Flagging Color:	<span style="border: 1px solid black; display: inline-block; width: 20px; height: 10px; background-color: #ccccff;"></span>
		Result Flagging Label:	RIN: 7.70

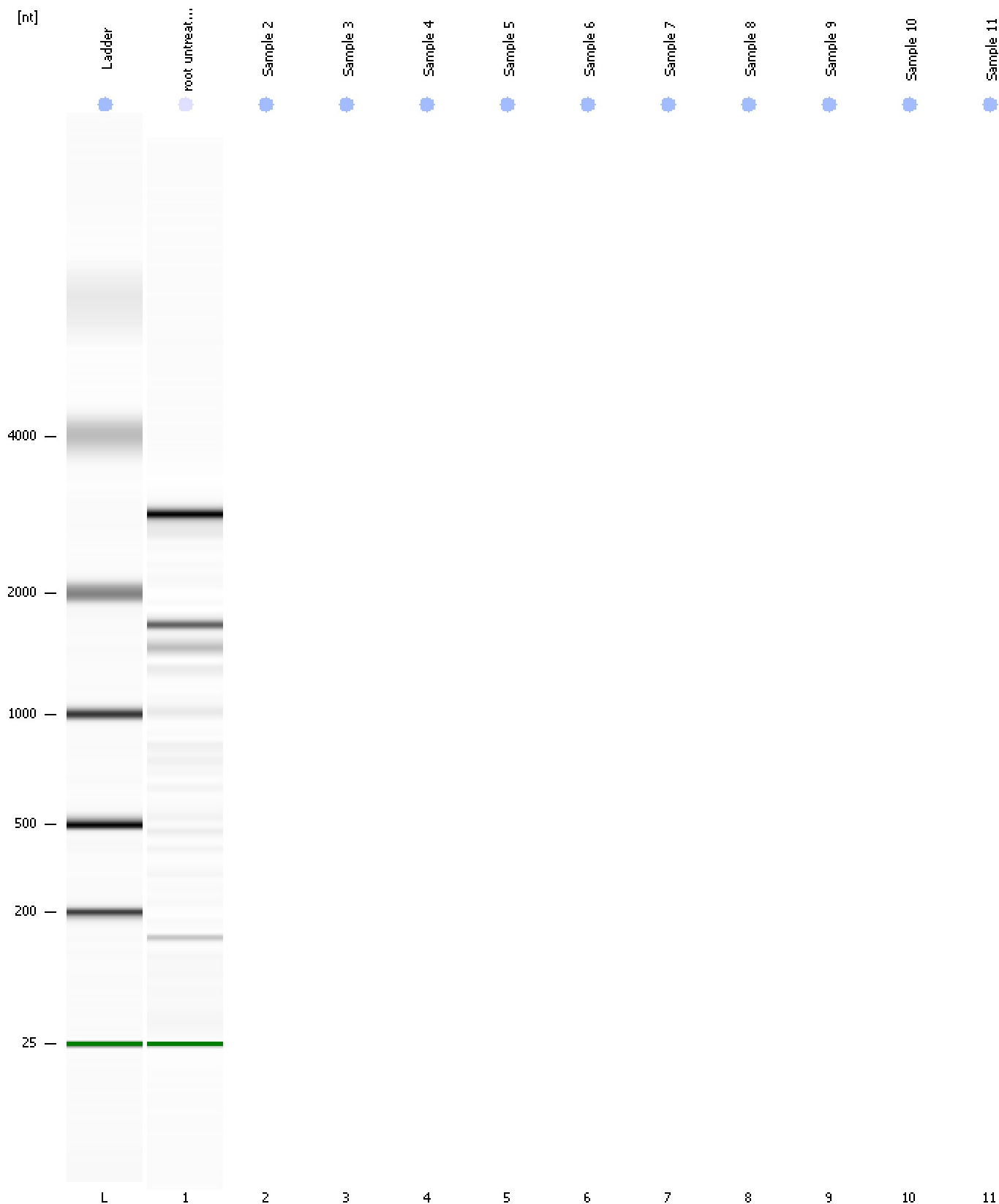
**Fragment table for sample 1 : root untreated 3**

Name	Start Size [nt]	End Size [nt]	Area	% of total Area
18S	1,666	1,872	14.4	18.6
28S	2,472	3,403	28.5	36.9

Assay Class: Eukaryote Total RNA Pico  
Data Path: C:\...ents and Settings\Bioanalyzer\2013-10-07\2013-10-07\_005.xad

Created: 10/7/2013 3:19:48 PM  
Modified: 10/7/2013 3:43:00 PM

**Gel Image**



Assay Class: Eukaryote Total RNA Pico  
Data Path: C:\...ents and Settings\Bioanalyzer\2013-10-07\2013-10-07\_005.xad

Created: 10/7/2013 3:19:48 PM  
Modified: 10/7/2013 3:43:00 PM

**Invalid Samples**

Sample 2 has not been run, no results available.  
Sample 3 has not been run, no results available.  
Sample 4 has not been run, no results available.  
Sample 5 has not been run, no results available.  
Sample 6 has not been run, no results available.  
Sample 7 has not been run, no results available.  
Sample 8 has not been run, no results available.  
Sample 9 has not been run, no results available.  
Sample 10 has not been run, no results available.  
Sample 11 has not been run, no results available.