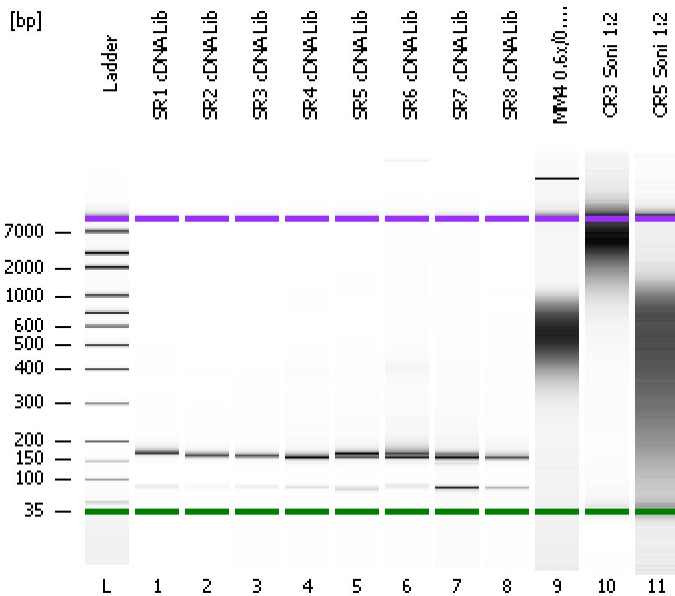


Assay Class: High Sensitivity DNA Assay
Data Path: C:\...ents and Settings\Bioanalyzer\2013-10-07\2013-10-07_007.xad

Created: 10/7/2013 5:28:26 PM
Modified: 10/7/2013 6:12:52 PM

Electrophoresis File Run Summary



Instrument Information:

Instrument Name: DE13701086 Firmware: C.01.069
Serial#: DE13701086 Type: G2938B

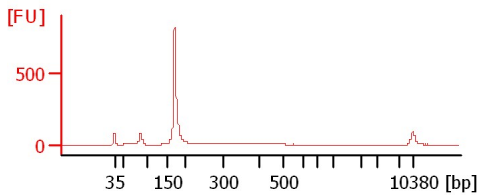
Assay Information:

Assay Origin Path: C:\Program Files\Agilent\2100 bioanalyzer\2100 expert\assays\dsDNA\High Sensitivity DNA.xsy
Assay Class: High Sensitivity DNA Assay
Version: 1.03
Assay Comments: Copyright © 2003-2010 Agilent Technologies

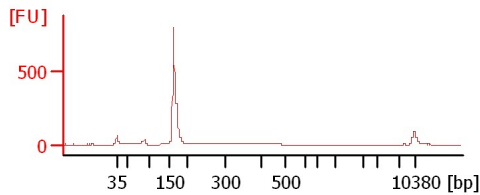
Chip Information:

Chip Lot #:
Reagent Kit Lot #:
Chip Comments:

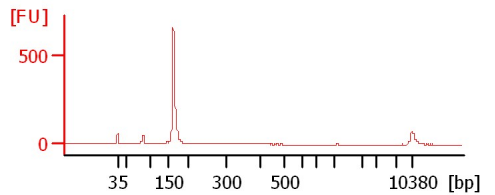
SR1 cDNA Lib



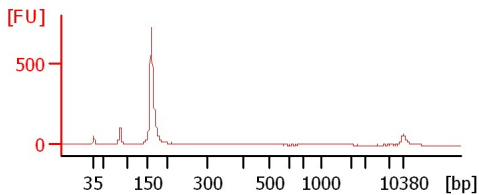
SR2 cDNA Lib



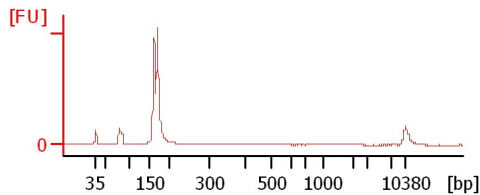
SR3 cDNA Lib



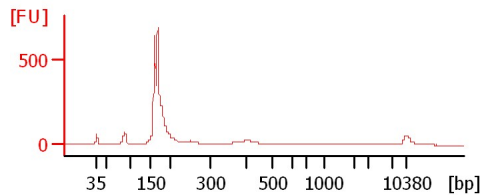
SR4 cDNA Lib



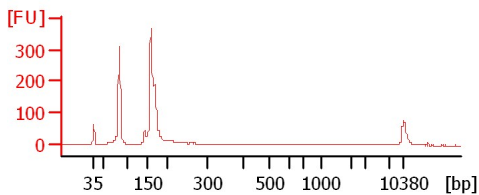
SR5 cDNA Lib



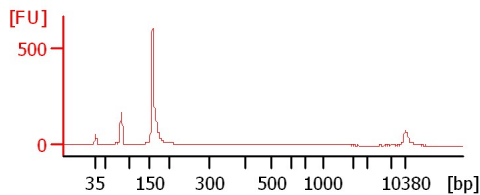
SR6 cDNA Lib



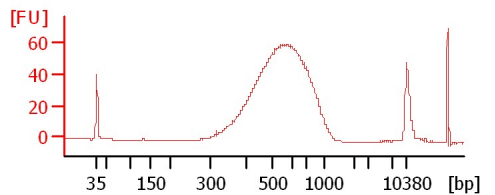
SR7 cDNA Lib



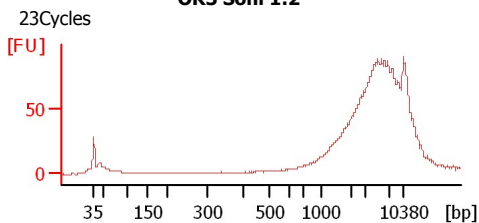
SR8 cDNA Lib



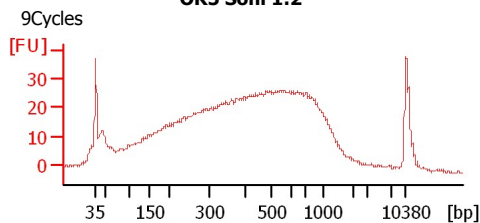
MM4 0.6x/0.5x 1:18



OR3 Soni 1:2



OR5 Soni 1:2



Assay Class: High Sensitivity DNA Assay
 Data Path: C:\...ents and Settings\Bioanalyzer\2013-10-07\2013-10-07_007.xad

Created: 10/7/2013 5:28:26 PM
 Modified: 10/7/2013 6:12:52 PM

Electrophoresis File Run Summary (Chip Summary)

Sample Name	Sample Comment	Rest. Digest	Status	Observation	Result Label	Result Color
SR1 cDNA Lib		<input type="checkbox"/>	✓			
SR2 cDNA Lib		<input type="checkbox"/>	✓			
SR3 cDNA Lib		<input type="checkbox"/>	✓			
SR4 cDNA Lib		<input type="checkbox"/>	✓			
SR5 cDNA Lib		<input type="checkbox"/>	✓			
SR6 cDNA Lib		<input type="checkbox"/>	✓			
SR7 cDNA Lib		<input type="checkbox"/>	✓			
SR8 cDNA Lib		<input type="checkbox"/>	✓			
MM4 0.6x/0.5x 1:18		<input type="checkbox"/>	✓			
OR3 Soni 1:2	23Cycles	<input type="checkbox"/>	✓			
OR5 Soni 1:2	9Cycles	<input type="checkbox"/>	✓			
Ladder		<input type="checkbox"/>	✓			

Chip Lot #

Reagent Kit Lot #

Chip Comments :

Assay Class: High Sensitivity DNA Assay
Data Path: C:\...ents and Settings\Bioanalyzer\2013-10-07\2013-10-07_007.xad

Created: 10/7/2013 5:28:26 PM
Modified: 10/7/2013 6:12:52 PM

Electrophoresis Assay Details

General Analysis Settings

Number of Available Sample and Ladder Wells (Max.) : 12
Minimum Visible Range [s] : 32
Maximum Visible Range [s] : 138
Start Analysis Time Range [s] : 33
End Analysis Time Range [s] : 137.5
Ladder Concentration [pg/μl] : 1950
Uses Standard Area for Ladder Fragments
Lower Marker Concentration [pg/μl] : 125
Upper Marker Concentration [pg/μl] : 75
Used Upper Marker for Quantitation
Standard Curve Fit is Point to Point
Show Data Aligned to Lower and Upper Marker

Integrator Settings

Integration Start Time [s] : 33.05
Integration End Time [s] : 137
Slope Threshold : 0.8
Height Threshold [FU] : 5
Area Threshold : 0.1
Width Threshold [s] : 0.6
Baseline Plateau [s] : 0.5

Filter Settings

Filter Width [s] : 0.5
Polynomial Order : 4

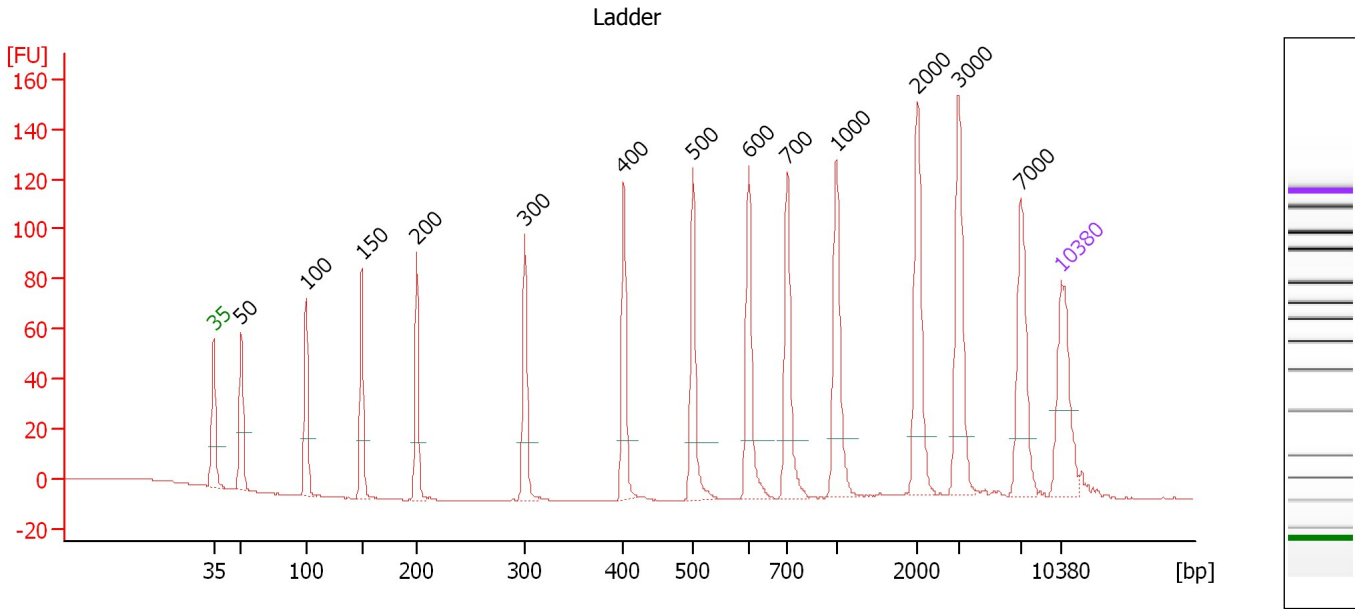
Ladder

Ladder Peak	Size	Area
1	35	160
2	50	210
3	100	208
4	150	221
5	200	242
6	300	270
7	400	305
8	500	306
9	600	336
10	700	321
11	1000	366
12	2000	413
13	3000	411
14	7000	400
15	10380	214

Assay Class: High Sensitivity DNA Assay
 Data Path: C:\...ents and Settings\Bioanalyzer\2013-10-07\2013-10-07_007.xad

Created: 10/7/2013 5:28:26 PM
 Modified: 10/7/2013 6:12:52 PM

Electropherogram Summary



Overall Results for Ladder

Noise: 0.1

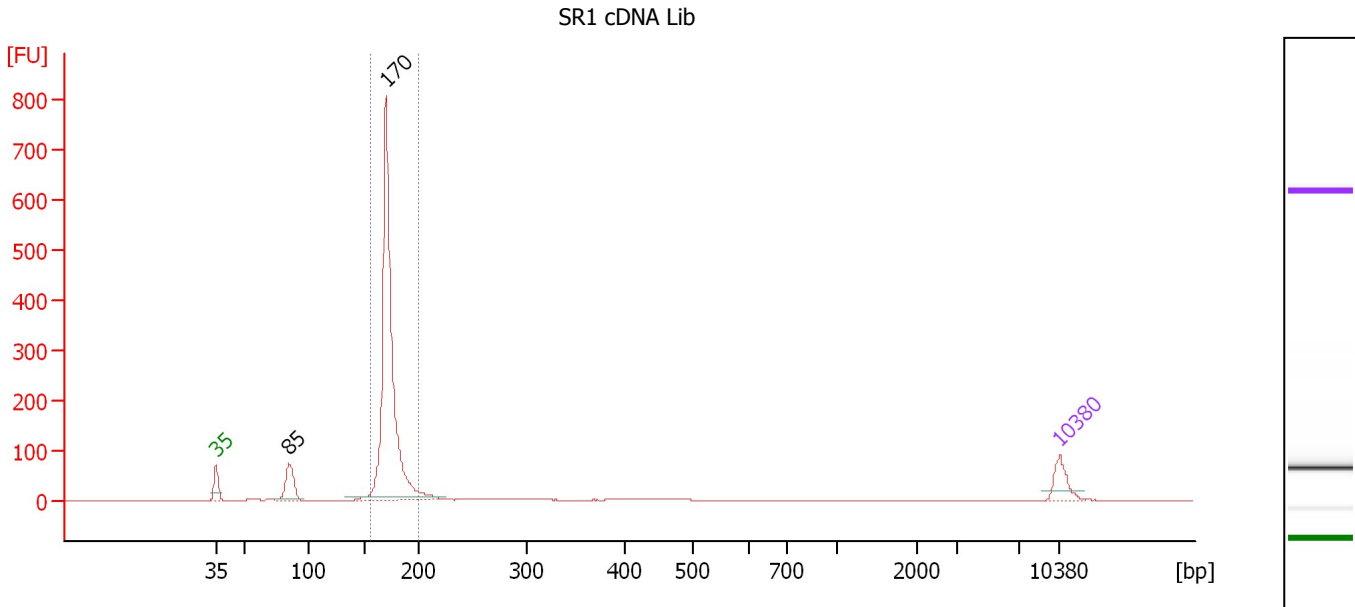
Peak table for Ladder

Peak	Size [bp]	Conc. [pg/μl]	Molarity [pmol/l]	Observations
1	35	125.00	5,411.3	Lower Marker
2	50	150.00	4,545.5	Ladder Peak
3	100	150.00	2,272.7	Ladder Peak
4	150	150.00	1,515.2	Ladder Peak
5	200	150.00	1,136.4	Ladder Peak
6	300	150.00	757.6	Ladder Peak
7	400	150.00	568.2	Ladder Peak
8	500	150.00	454.5	Ladder Peak
9	600	150.00	378.8	Ladder Peak
10	700	150.00	324.7	Ladder Peak
11	1,000	150.00	227.3	Ladder Peak
12	2,000	150.00	113.6	Ladder Peak
13	3,000	150.00	75.8	Ladder Peak
14	7,000	150.00	32.5	Ladder Peak
15	10,380	75.00	10.9	Upper Marker

Assay Class: High Sensitivity DNA Assay
 Data Path: C:\...ents and Settings\Bioanalyzer\2013-10-07\2013-10-07_007.xad

Created: 10/7/2013 5:28:26 PM
 Modified: 10/7/2013 6:12:52 PM

Electropherogram Summary Continued ...



Overall Results for sample 1 : SR1 cDNA Lib

Number of peaks found: 2 Corr. Area 1: 1,276.1
 Noise: 0.2

Peak table for sample 1 : SR1 cDNA Lib

Peak	Size [bp]	Conc. [pg/μl]	Molarity [pmol/l]	Observations
1	35	125.00	5,411.3	Lower Marker
2	85	195.52	3,485.3	
3	170	1,813.84	16,147.3	
4	10,380	75.00	10.9	Upper Marker

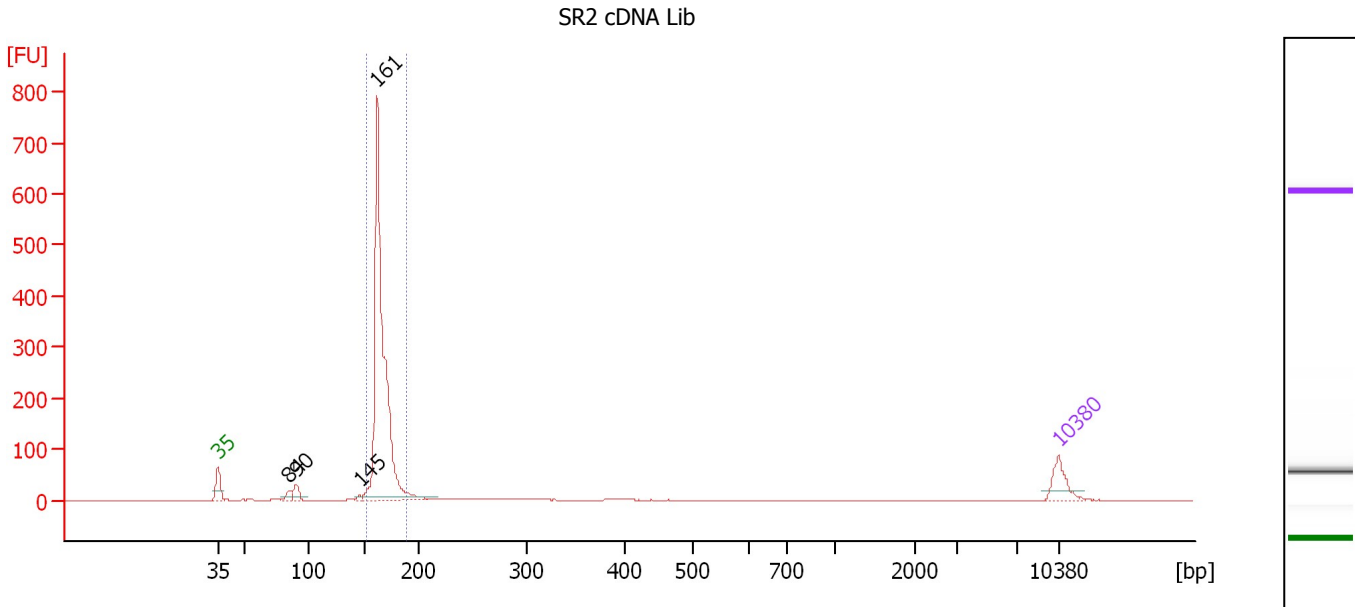
Region table for sample 1 : SR1 cDNA Lib

From [bp]	To [bp]	Average Size [bp]	Molarity [pmol/l]	Conc. [pg/μl]	Corr. Area	% of Total	Size distribution in CV [%]	Color
157	199	173	15,256.6	1,743.39	1,276.1	81	3.9	Blue

Assay Class: High Sensitivity DNA Assay
 Data Path: C:\...ents and Settings\Bioanalyzer\2013-10-07\2013-10-07_007.xad

Created: 10/7/2013 5:28:26 PM
 Modified: 10/7/2013 6:12:52 PM

Electropherogram Summary Continued ...



Overall Results for sample 2 : SR2 cDNA Lib

Number of peaks found: 4 Corr. Area 1: 1,156.5
 Noise: 0.1

Peak table for sample 2 : SR2 cDNA Lib

Peak	Size [bp]	Conc. [pg/μl]	Molarity [pmol/l]	Observations
1	35	125.00	5,411.3	Lower Marker
2	84	33.42	600.3	
3	90	54.00	911.5	
4	145	11.31	117.9	
5	161	1,702.17	15,980.1	
6	10,380	75.00	10.9	Upper Marker

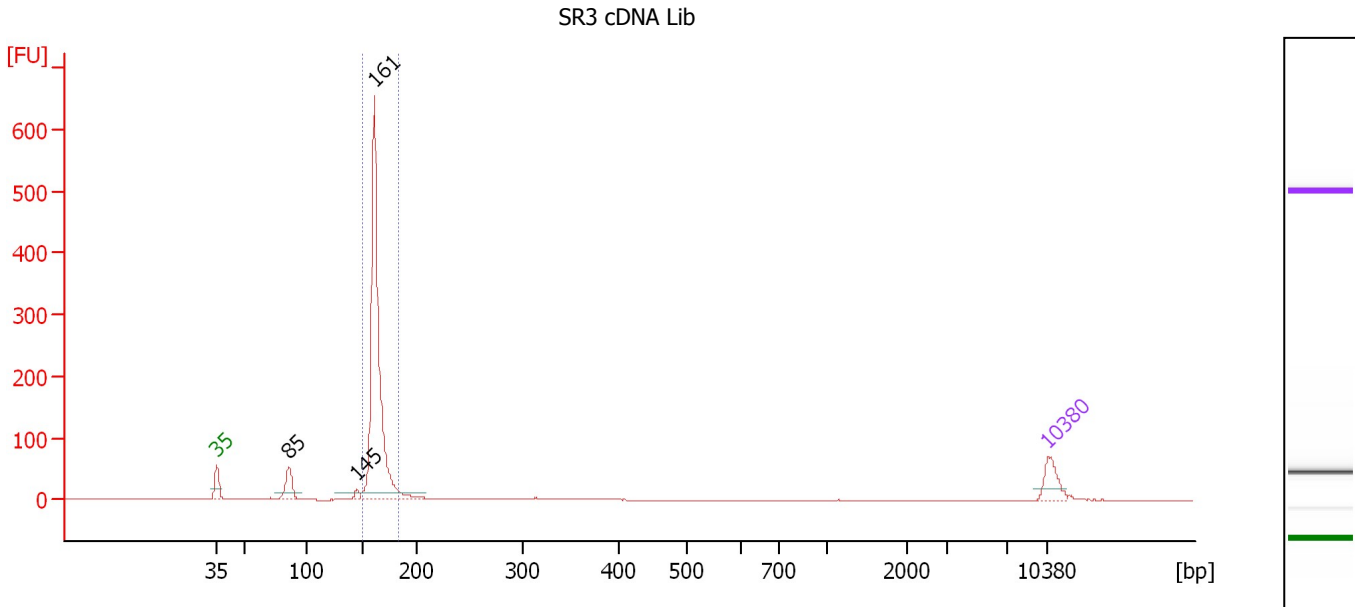
Region table for sample 2 : SR2 cDNA Lib

From [bp]	To [bp]	Average Size [bp]	Molarity [pmol/l]	Conc. [pg/μl]	Corr. Area	% of Total	Size distribution in CV [%]	Color
152	188	165	15,014.0	1,636.92	1,156.5	83	3.6	Blue

Assay Class: High Sensitivity DNA Assay
 Data Path: C:\...ents and Settings\Bioanalyzer\2013-10-07\2013-10-07_007.xad

Created: 10/7/2013 5:28:26 PM
 Modified: 10/7/2013 6:12:52 PM

Electropherogram Summary Continued ...



Setpoint Deviations for sample 3 : SR3 cDNA Lib

Height Threshold [FU] : 10

Overall Results for sample 3 : SR3 cDNA Lib

Number of peaks found: 3 Corr. Area 1: 847.4
 Noise: 0.1

Peak table for sample 3 : SR3 cDNA Lib

Peak	Size [bp]	Conc. [pg/μl]	Molarity [pmol/l]	Observations
1	35	125.00	5,411.3	Lower Marker
2	85	138.90	2,463.1	
3	145	27.97	291.4	
4	161	1,484.81	13,956.6	
5	10,380	75.00	10.9	Upper Marker

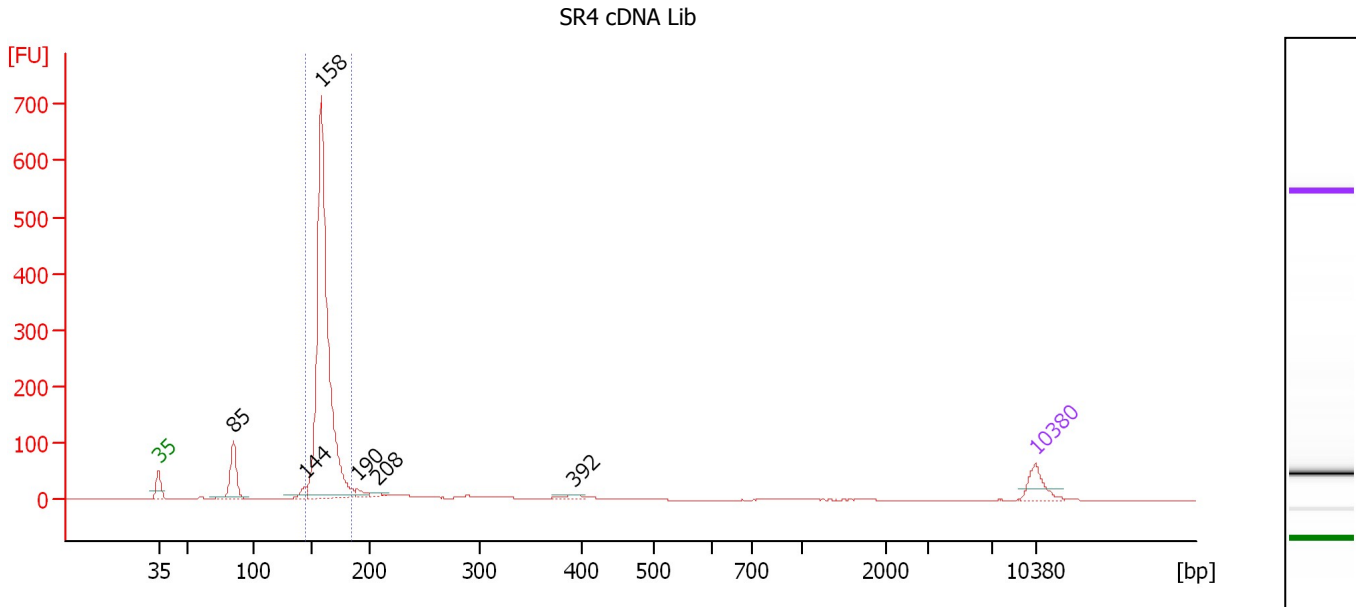
Region table for sample 3 : SR3 cDNA Lib

From [bp]	To [bp]	Average Size [bp]	Molarity [pmol/l]	Conc. [pg/μl]	Corr. Area	% of Total	Size distribution in CV [%]	Color
151	184	163	13,324.5	1,437.50	847.4	80	3.2	Blue

Assay Class: High Sensitivity DNA Assay
 Data Path: C:\...ents and Settings\Bioanalyzer\2013-10-07\2013-10-07_007.xad

Created: 10/7/2013 5:28:26 PM
 Modified: 10/7/2013 6:12:52 PM

Electropherogram Summary Continued ...



Overall Results for sample 4 : SR4 cDNA Lib

Number of peaks found: 6 Corr. Area 1: 1,290.1
 Noise: 0.2

Peak table for sample 4 : SR4 cDNA Lib

Peak	Size [bp]	Conc. [pg/μl]	Molarity [pmol/l]	Observations
1	35	125.00	5,411.3	Lower Marker
2	85	245.36	4,393.7	
3	144	42.30	445.2	
4	158	2,182.70	20,887.0	
5	190	27.07	215.5	
6	208	15.08	109.7	
7	392	15.40	59.5	
8	10,380	75.00	10.9	Upper Marker

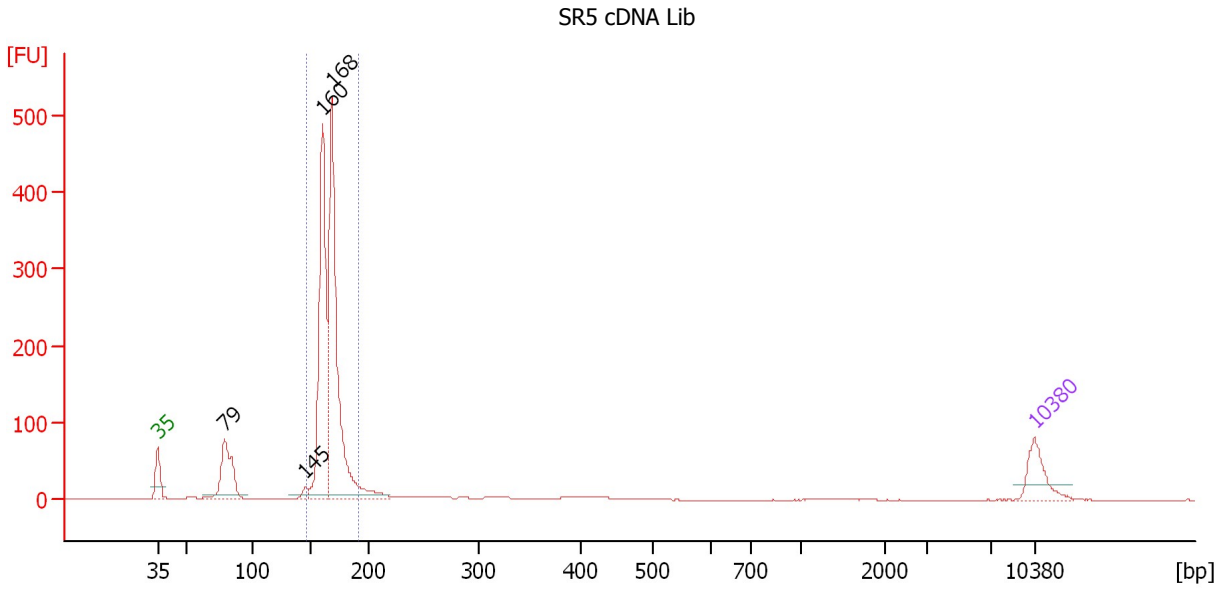
Region table for sample 4 : SR4 cDNA Lib

From [bp]	To [bp]	Average Size [bp]	Molarity [pmol/l]	Conc. [pg/μl]	Corr. Area	% of Total	Size distribution in CV [%]	Color
144	186	161	20,779.5	2,207.47	1,290.1	74	4.2	Blue

Assay Class: High Sensitivity DNA Assay
 Data Path: C:\...ents and Settings\Bioanalyzer\2013-10-07\2013-10-07_007.xad

Created: 10/7/2013 5:28:26 PM
 Modified: 10/7/2013 6:12:52 PM

Electropherogram Summary Continued ...



Overall Results for sample 5 : SR5 cDNA Lib

Number of peaks found: 4 Corr. Area 1: 1,228.3
 Noise: 0.1

Peak table for sample 5 : SR5 cDNA Lib

Peak	Size [bp]	Conc. [pg/μl]	Molarity [pmol/l]	Observations
1	35	125.00	5,411.3	Lower Marker
2	79	232.50	4,472.9	
3	145	23.44	244.4	
4	160	700.97	6,624.0	
5	168	901.12	8,107.2	
6	10,380	75.00	10.9	Upper Marker

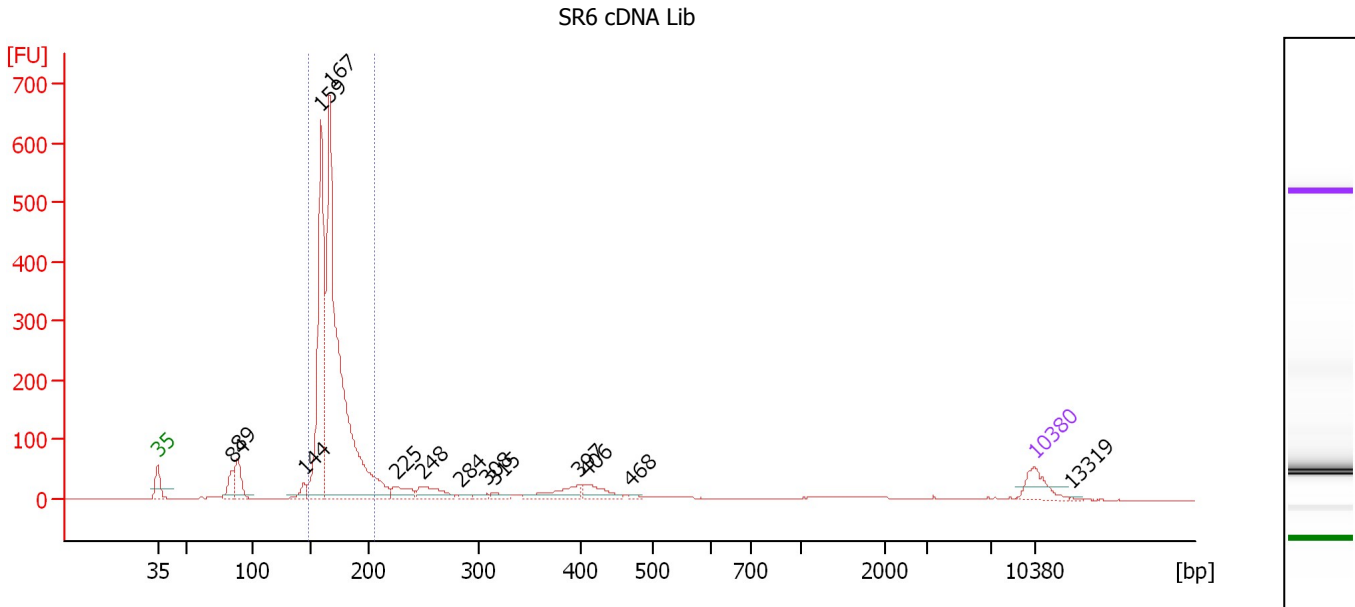
Region table for sample 5 : SR5 cDNA Lib

From [bp]	To [bp]	Average Size [bp]	Molarity [pmol/l]	Conc. [pg/μl]	Corr. Area	% of Total	Size distribution in CV [%]	Color
146	192	166	14,218.9	1,560.31	1,228.3	77	4.4	Blue

Assay Class: High Sensitivity DNA Assay
 Data Path: C:\...ents and Settings\Bioanalyzer\2013-10-07\2013-10-07_007.xad

Created: 10/7/2013 5:28:26 PM
 Modified: 10/7/2013 6:12:52 PM

Electropherogram Summary Continued ...



Overall Results for sample 6 : SR6 cDNA Lib

Number of peaks found: 14 Corr. Area 1: 1,974.7
 Noise: 0.1

Peak table for sample 6 : SR6 cDNA Lib

Peak	Size [bp]	Conc. [pg/μl]	Molarity [pmol/l]	Observations
1	35	125.00	5,411.3	Lower Marker
2	84	83.79	1,506.5	
3	89	138.17	2,363.0	
4	144	45.83	481.7	
5	159	1,032.23	9,851.6	
6	167	2,122.73	19,273.0	
7	225	74.40	500.7	
8	248	97.03	592.0	
9	284	13.48	71.9	
10	308	14.60	71.9	
11	315	22.64	108.9	
12	397	86.63	330.5	
13	406	74.09	276.3	
14	468	7.77	25.1	
15	10,380	75.00	10.9	Upper Marker
16	13,319	0.00	0.0	

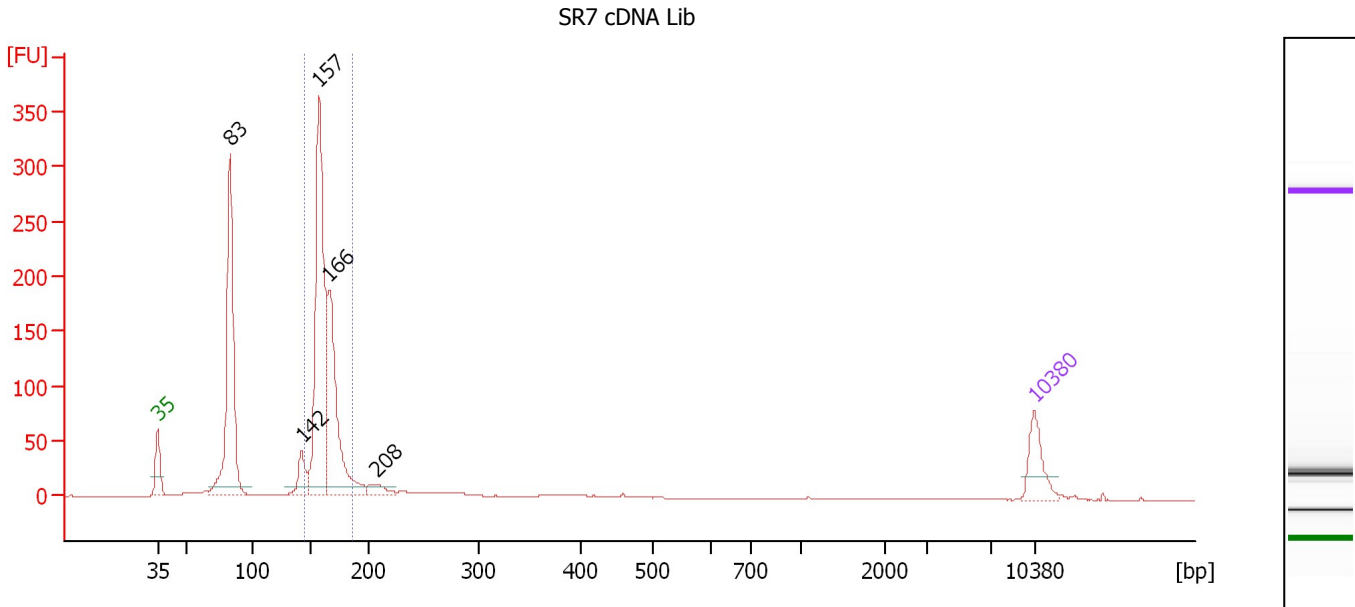
Region table for sample 6 : SR6 cDNA Lib

From [bp]	To [bp]	Average Size [bp]	Molarity [pmol/l]	Conc. [pg/μl]	Corr. Area	% of Total	Size distribution in CV [%]	Color
147	205	169	27,031.7	3,015.67	1,974.7	74	6.8	Blue

Assay Class: High Sensitivity DNA Assay
 Data Path: C:\...ents and Settings\Bioanalyzer\2013-10-07\2013-10-07_007.xad

Created: 10/7/2013 5:28:26 PM
 Modified: 10/7/2013 6:12:52 PM

Electropherogram Summary Continued ...



Setpoint Deviations for sample 7 : SR7 cDNA Lib

Height Threshold [FU] : 7

Overall Results for sample 7 : SR7 cDNA Lib

Number of peaks found: 5 Corr. Area 1: 804.9
 Noise: 0.2

Peak table for sample 7 : SR7 cDNA Lib

Peak	Size [bp]	Conc. [pg/μl]	Molarity [pmol/l]	Observations
1	35	125.00	5,411.3	Lower Marker
2	83	692.14	12,639.2	
3	142	79.13	843.6	
4	157	797.08	7,670.5	
5	166	475.27	4,332.2	
6	208	32.80	238.8	
7	10,380	75.00	10.9	Upper Marker

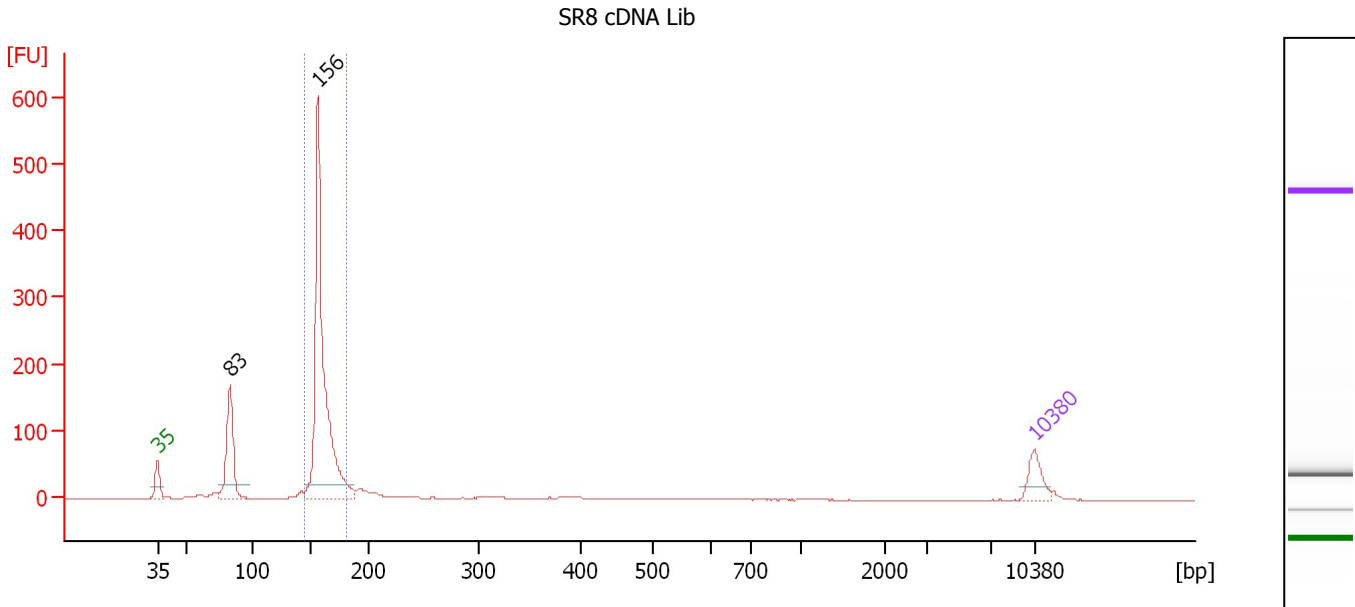
Region table for sample 7 : SR7 cDNA Lib

From [bp]	To [bp]	Average Size [bp]	Molarity [pmol/l]	Conc. [pg/μl]	Corr. Area	% of Total	Size distribution in CV [%]	Color
145	187	162	11,993.2	1,284.24	804.9	55	4.8	Blue

Assay Class: High Sensitivity DNA Assay
 Data Path: C:\...ents and Settings\Bioanalyzer\2013-10-07\2013-10-07_007.xad

Created: 10/7/2013 5:28:26 PM
 Modified: 10/7/2013 6:12:52 PM

Electropherogram Summary Continued ...



Setpoint Deviations for sample 8 : SR8 cDNA Lib

Height Threshold [FU] : 20

Overall Results for sample 8 : SR8 cDNA Lib

Number of peaks found: 2 Corr. Area 1: 789.6
 Noise: 0.1

Peak table for sample 8 : SR8 cDNA Lib

Peak	Size [bp]	Conc. [pg/μl]	Molarity [pmol/l]	Observations
1	35	125.00	5,411.3	Lower Marker
2	83	397.52	7,268.9	
3	156	1,452.32	14,084.6	
4	10,380	75.00	10.9	Upper Marker

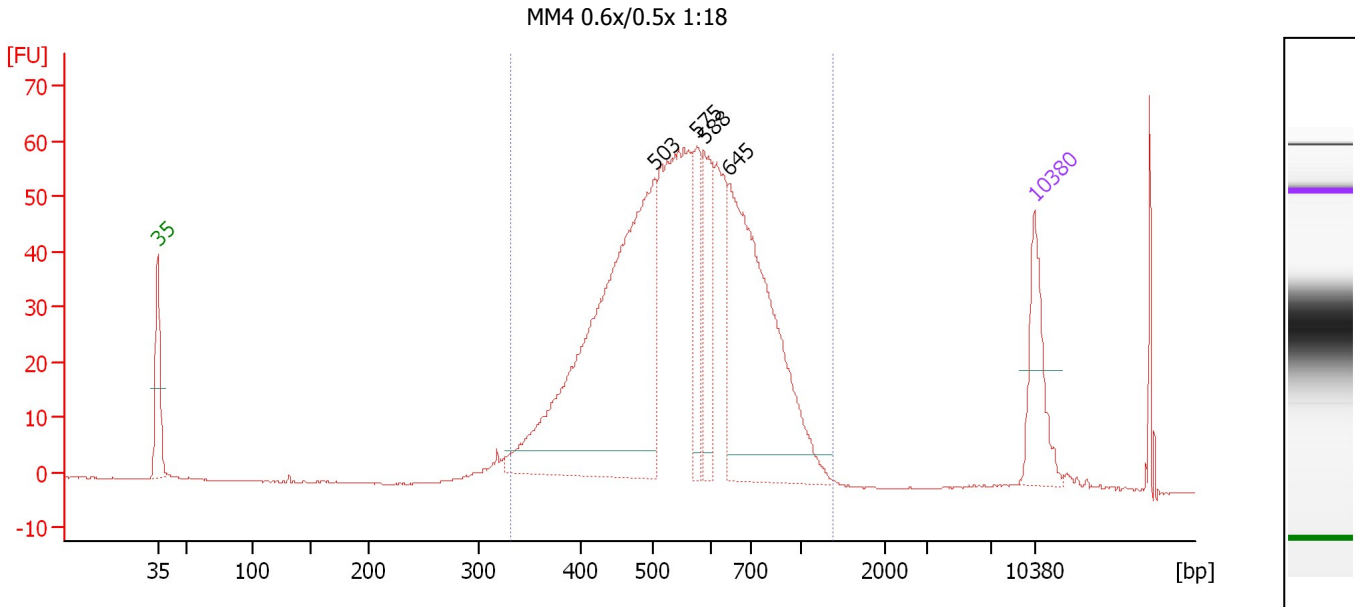
Region table for sample 8 : SR8 cDNA Lib

From [bp]	To [bp]	Average Size [bp]	Molarity [pmol/l]	Conc. [pg/μl]	Corr. Area	% of Total	Size distribution in CV [%]	Color
145	181	160	12,893.4	1,359.79	789.6	76	4.0	Blue

Assay Class: High Sensitivity DNA Assay
 Data Path: C:\...ents and Settings\Bioanalyzer\2013-10-07\2013-10-07_007.xad

Created: 10/7/2013 5:28:26 PM
 Modified: 10/7/2013 6:12:52 PM

Electropherogram Summary Continued ...



Overall Results for sample 9 : MM4 0.6x/0.5x 1:18

Number of peaks found: 4 Corr. Area 1: 1,038.6
 Noise: 0.1

Peak table for sample 9 : MM4 0.6x/0.5x 1:18

Peak	Size [bp]	Conc. [pg/μl]	Molarity [pmol/l]	Observations
1	35	125.00	5,411.3	Lower Marker
2	503	703.41	2,120.0	
3	575	80.89	213.1	
4	588	110.70	285.1	
5	645	439.79	1,032.9	
6	10,380	75.00	10.9	Upper Marker

Region table for sample 9 : MM4 0.6x/0.5x 1:18

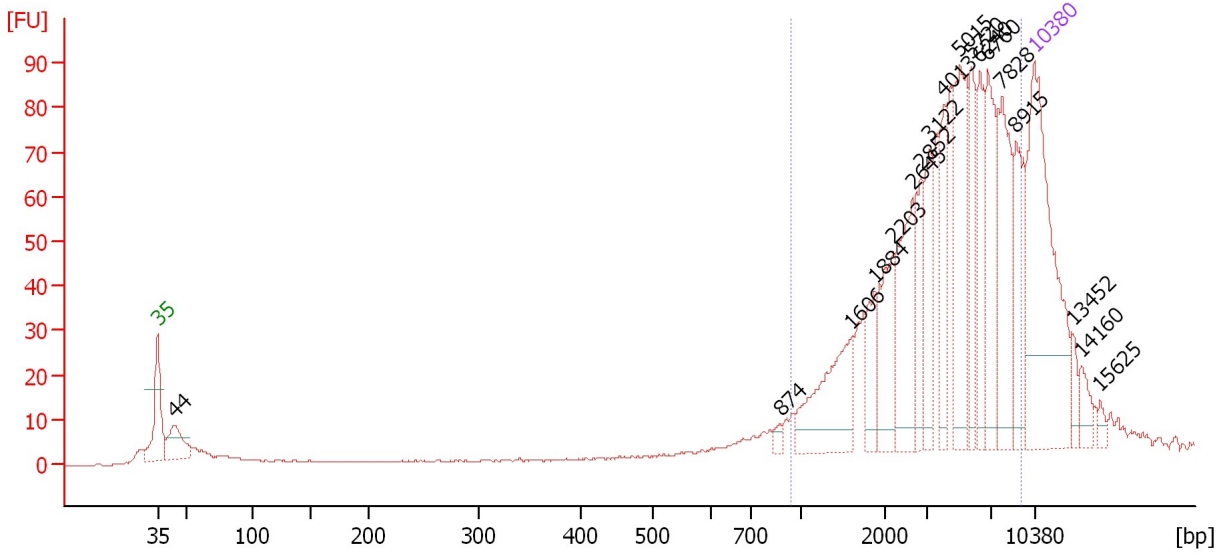
From [bp]	To [bp]	Average Size [bp]	Molarity [pmol/l]	Conc. [pg/μl]	Corr. Area	% of Total	Size distribution in CV [%]	Color
331	1,384	576	5,465.8	1,914.15	1,038.6	96	26.6	Blue

Assay Class: High Sensitivity DNA Assay
 Data Path: C:\...ents and Settings\Bioanalyzer\2013-10-07\2013-10-07_007.xad

Created: 10/7/2013 5:28:26 PM
 Modified: 10/7/2013 6:12:52 PM

Electropherogram Summary Continued ...

OR3 Soni 1:2 [23Cycles]



Overall Results for sample 10 : OR3 Soni 1:2

Number of peaks found: 18 Corr. Area 1: 865.2
 Noise: 0.1

Peak table for sample 10 : OR3 Soni 1:2

Peak	Size [bp]	Conc. [pg/μl]	Molarity [pmol/l]	Observations
1	35	125.00	5,411.3	Lower Marker
2	44	21.67	740.9	
3	874	2.56	4.4	
4	1,606	36.51	34.4	
5	1,884	13.49	10.8	
6	2,203	26.49	18.2	
7	2,645	33.69	19.3	
8	2,852	15.46	8.2	
9	3,122	19.30	9.4	
10	4,013	19.46	7.3	
11	5,015	39.59	12.0	
12	5,720	21.39	5.7	
13	6,240	21.03	5.1	
14	6,760	34.26	7.7	
15	7,828	34.88	6.8	
16	8,915	26.84	4.6	
17	10,380	75.00	10.9	Upper Marker
18	13,452	0.00	0.0	
19	14,160	0.00	0.0	
20	15,625	0.00	0.0	

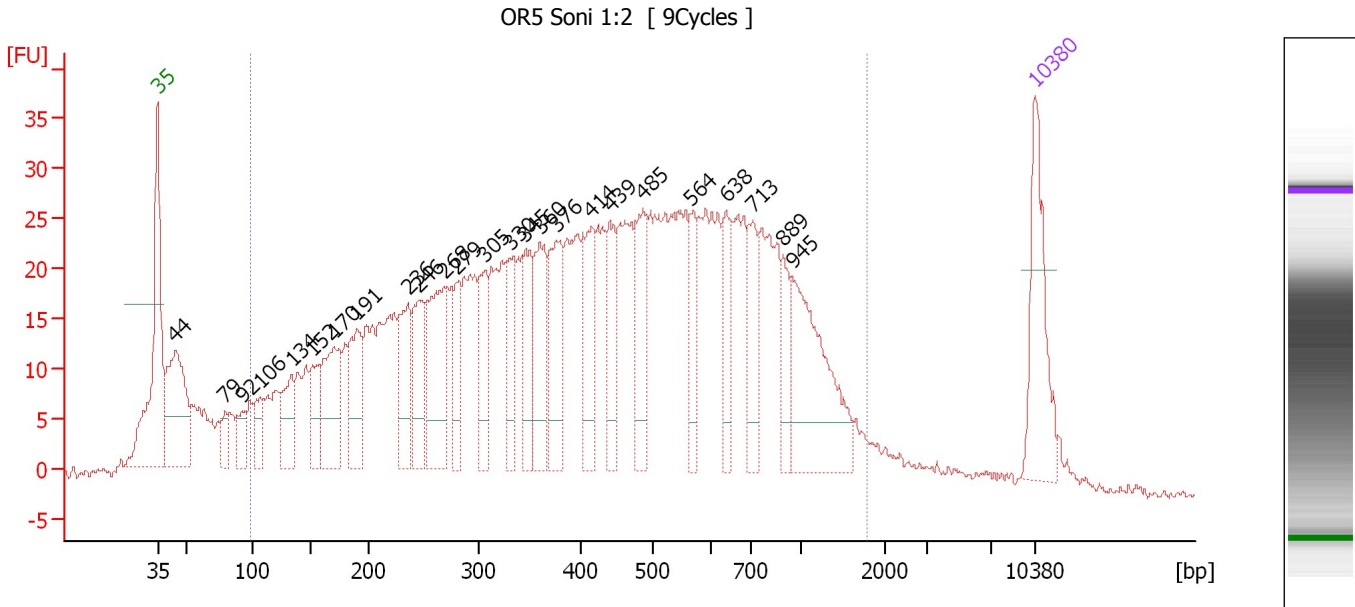
Region table for sample 10 : OR3 Soni 1:2

From [bp]	To [bp]	Average Size [bp]	Molarity [pmol/l]	Conc. [pg/μl]	Corr. Area	% of Total	Size distribution in CV [%]	Color
934	9,399	4,516	186.3	392.75	865.2	85	52.4	Blue

Assay Class: High Sensitivity DNA Assay
 Data Path: C:\...ents and Settings\Bioanalyzer\2013-10-07\2013-10-07_007.xad

Created: 10/7/2013 5:28:26 PM
 Modified: 10/7/2013 6:12:52 PM

Electropherogram Summary Continued ...



Overall Results for sample 11 : OR5 Soni 1:2

Number of peaks found: 25 Corr. Area 1: 1,201.4
 Noise: 0.6

Peak table for sample 11 : OR5 Soni 1:2

Peak	Size [bp]	Conc. [pg/μl]	Molarity [pmol/l]	Observations
1	35	125.00	5,411.3	Lower Marker
2	44	156.03	5,333.1	
3	79	22.49	432.1	
4	92	27.73	457.9	
5	106	31.74	454.1	
6	134	57.40	650.8	
7	152	47.43	474.0	
8	170	102.53	911.3	
9	191	73.16	580.8	
10	236	77.49	496.6	
11	246	68.87	424.3	
12	268	121.09	683.9	
13	279	46.15	250.2	
14	305	56.60	280.8	
15	330	53.73	246.4	
16	345	63.99	281.0	
17	360	84.04	354.1	
18	376	86.16	347.3	
19	414	75.28	275.7	
20	439	58.31	201.0	
21	485	72.88	227.6	
22	564	44.08	118.5	
23	638	44.66	106.0	
24	713	51.60	109.6	
25	889	32.36	55.1	
26	945	130.80	209.6	


Assay Class: High Sensitivity DNA Assay
Data Path: C:\...ents and Settings\Bioanalyzer\2013-10-07\2013-10-07_007.xad

Created: 10/7/2013 5:28:26 PM
Modified: 10/7/2013 6:12:52 PM

Electropherogram Summary Continued ...**... Peak table for sample 11 : OR5 Soni 1:2**

Peak	Size [bp]	Conc. [pg/ μ l]	Molarity [pmol/l]	Observations
27	10,380	75.00	10.9	Upper Marker

Region table for sample 11 : OR5 Soni 1:2

From [bp]	To [bp]	Average Size [bp]	Molarity [pmol/l]	Conc. [pg/ μ l]	Corr. Area	% of Total	Size distribution in CV [%]	Color
99	1,783	492	15,283.8	3,081.16	1,201.4	91	59.2	

Assay Class: High Sensitivity DNA Assay
Data Path: C:\...ents and Settings\Bioanalyzer\2013-10-07\2013-10-07_007.xad

Created: 10/7/2013 5:28:26 PM
Modified: 10/7/2013 6:12:52 PM

Gel Image

