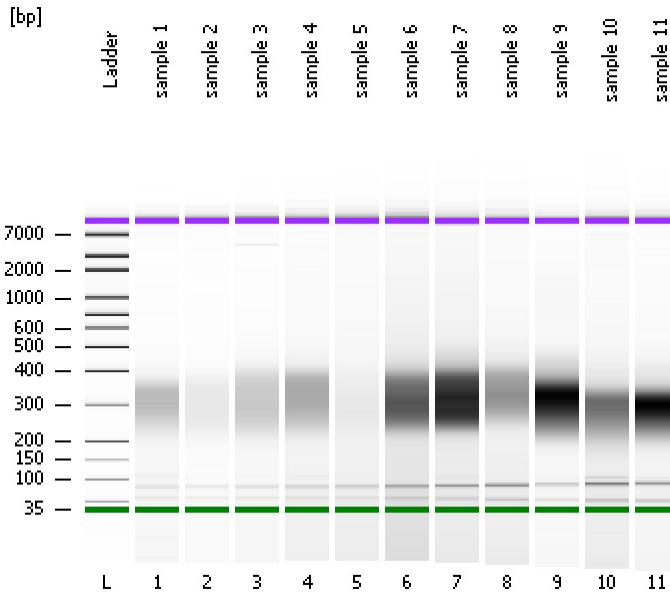


Assay Class: High Sensitivity DNA Assay
Data Path: C:\...ents and Settings\Bioanalyzer\2013-10-07\2013-10-07_003.xad

Created: 10/7/2013 1:16:23 PM
Modified: 10/7/2013 1:58:58 PM

Electrophoresis File Run Summary



Instrument Information:

Instrument Name: DE13701086 Firmware: C.01.069
Serial#: DE13701086 Type: G2938B

Assay Information:

Assay Origin Path: C:\Program Files\Agilent\2100 bioanalyzer\2100 expert\assays\dsDNA\High Sensitivity DNA.xsy
Assay Class: High Sensitivity DNA Assay
Version: 1.03
Assay Comments: Copyright © 2003-2010 Agilent Technologies

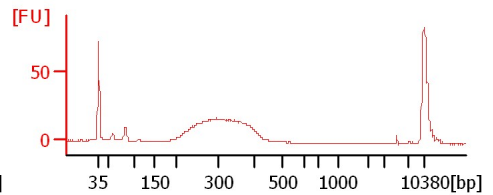
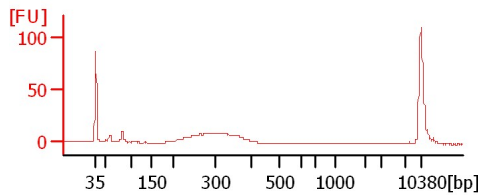
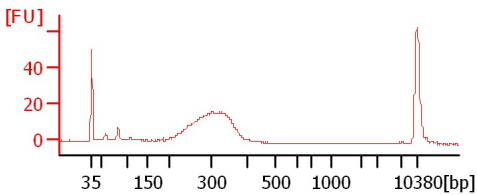
Chip Information:

Chip Lot #: Reagent Kit Lot #: Chip Comments:

sample 1

sample 2

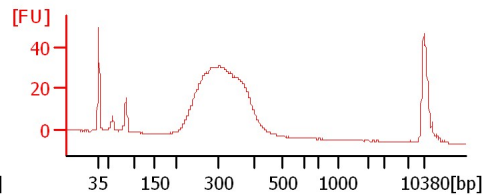
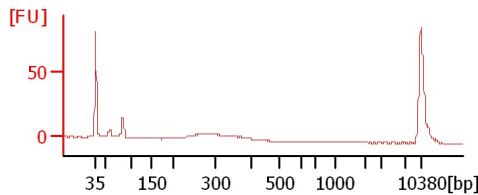
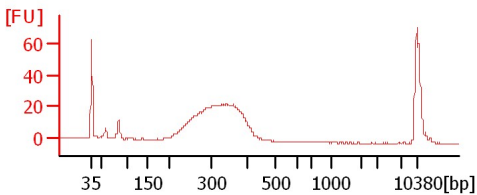
sample 3



sample 4

sample 5

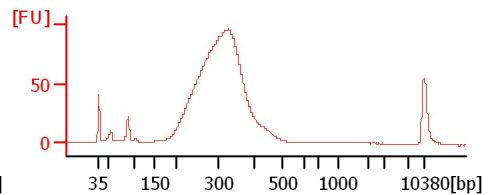
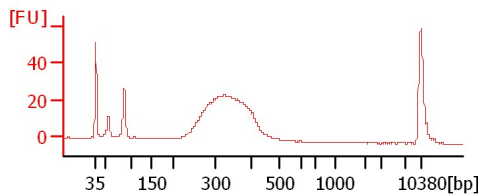
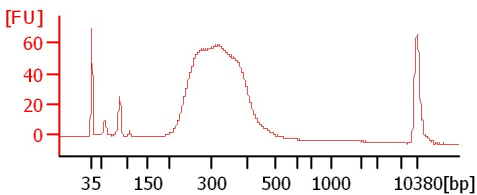
sample 6



sample 7

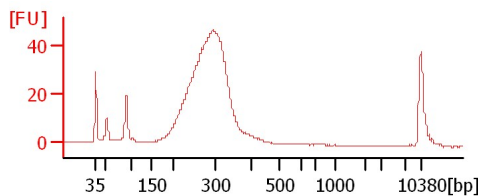
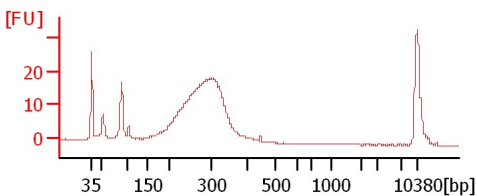
sample 8

sample 9



sample 10

sample 11



Assay Class: High Sensitivity DNA Assay
Data Path: C:\...ents and Settings\Bioanalyzer\2013-10-07\2013-10-07_003.xad

Created: 10/7/2013 1:16:23 PM
Modified: 10/7/2013 1:58:58 PM

Electrophoresis File Run Summary (Chip Summary)

Sample Name	Sample Comment	Rest. Digest	Status	Observation	Result Label	Result Color
sample 1		<input type="checkbox"/>	✓			
sample 2		<input type="checkbox"/>	✓			
sample 3		<input type="checkbox"/>	✓			
sample 4		<input type="checkbox"/>	✓			
sample 5		<input type="checkbox"/>	✓			
sample 6		<input type="checkbox"/>	✓			
sample 7		<input type="checkbox"/>	✓			
sample 8		<input type="checkbox"/>	✓			
sample 9		<input type="checkbox"/>	✓			
sample 10		<input type="checkbox"/>	✓			
sample 11		<input type="checkbox"/>	✓			
Ladder		<input type="checkbox"/>	✓			

Chip Lot #

Reagent Kit Lot #

Chip Comments :

Assay Class: High Sensitivity DNA Assay
Data Path: C:\...ents and Settings\Bioanalyzer\2013-10-07\2013-10-07_003.xad

Created: 10/7/2013 1:16:23 PM
Modified: 10/7/2013 1:58:58 PM

Electrophoresis Assay Details

General Analysis Settings

Number of Available Sample and Ladder Wells (Max.) : 12
Minimum Visible Range [s] : 32
Maximum Visible Range [s] : 138
Start Analysis Time Range [s] : 33
End Analysis Time Range [s] : 137.5
Ladder Concentration [pg/μl] : 1950
Uses Standard Area for Ladder Fragments
Lower Marker Concentration [pg/μl] : 125
Upper Marker Concentration [pg/μl] : 75
Used Upper Marker for Quantitation
Standard Curve Fit is Point to Point
Show Data Aligned to Lower and Upper Marker

Integrator Settings

Integration Start Time [s] : 33.05
Integration End Time [s] : 137
Slope Threshold : 0.8
Height Threshold [FU] : 5
Area Threshold : 0.1
Width Threshold [s] : 0.6
Baseline Plateau [s] : 0.5

Filter Settings

Filter Width [s] : 0.5
Polynomial Order : 4

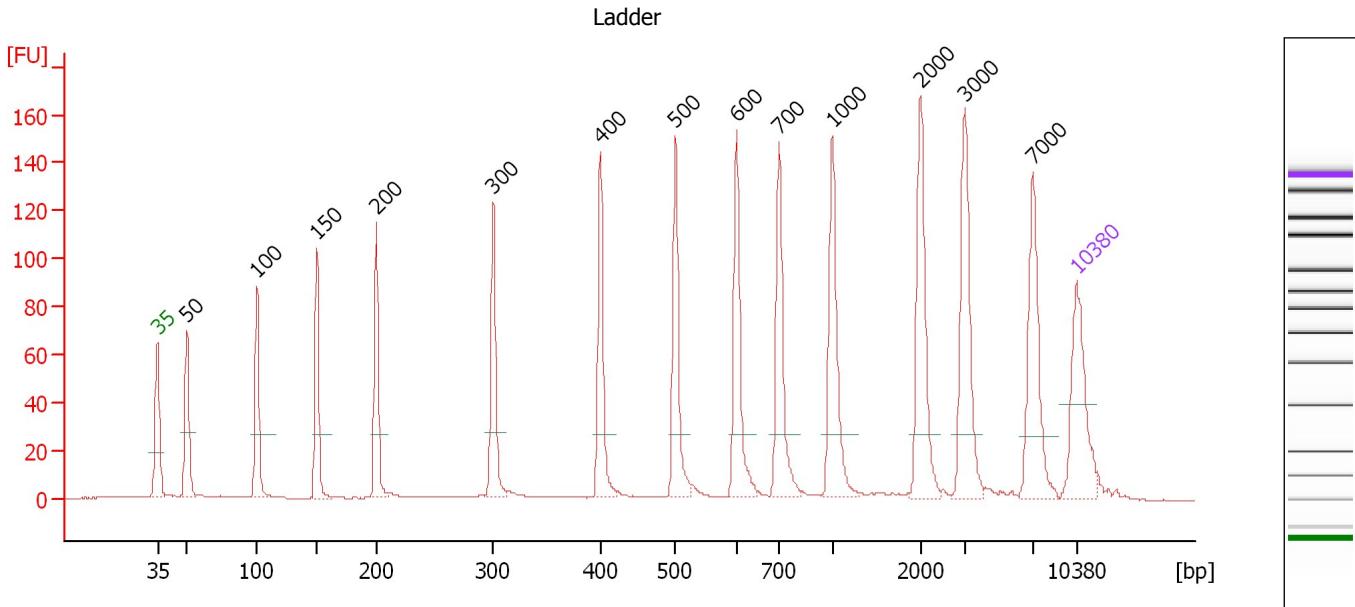
Ladder

Ladder Peak	Size	Area
1	35	160
2	50	210
3	100	208
4	150	221
5	200	242
6	300	270
7	400	305
8	500	306
9	600	336
10	700	321
11	1000	366
12	2000	413
13	3000	411
14	7000	400
15	10380	214

Assay Class: High Sensitivity DNA Assay
 Data Path: C:\...ents and Settings\Bioanalyzer\2013-10-07\2013-10-07_003.xad

Created: 10/7/2013 1:16:23 PM
 Modified: 10/7/2013 1:58:58 PM

Electropherogram Summary



Overall Results for Ladder

Noise: 0.1

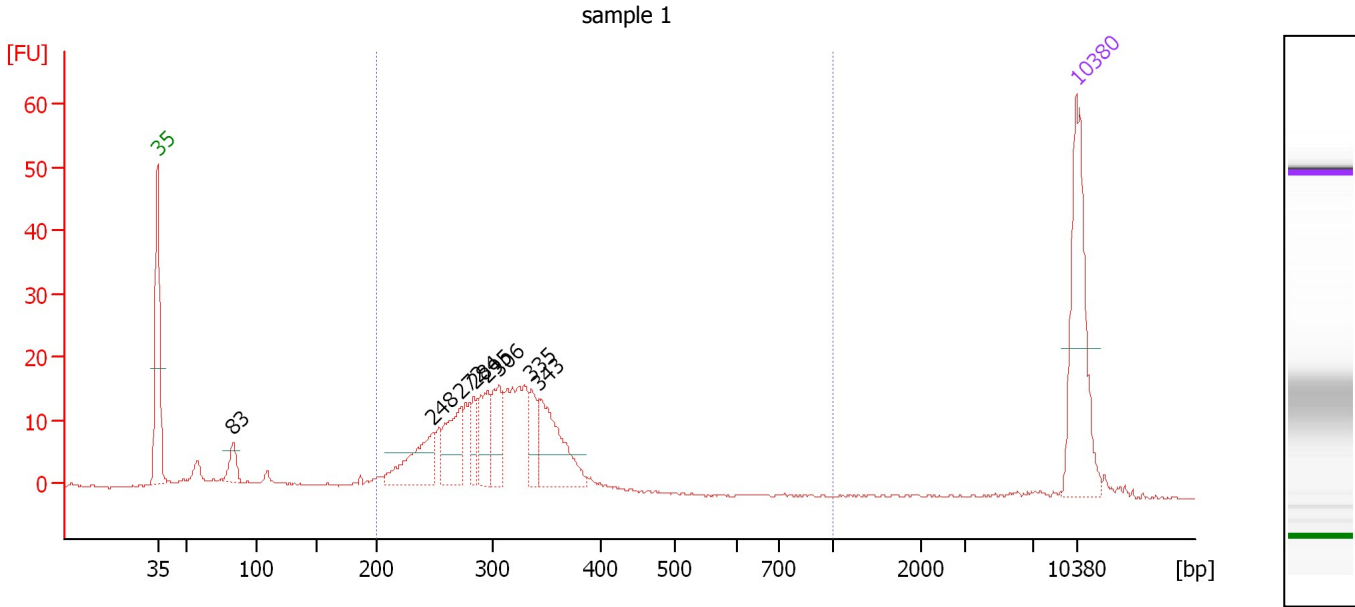
Peak table for Ladder

Peak	Size [bp]	Conc. [pg/μl]	Molarity [pmol/l]	Observations
1	35	125.00	5,411.3	Lower Marker
2	50	150.00	4,545.5	Ladder Peak
3	100	150.00	2,272.7	Ladder Peak
4	150	150.00	1,515.2	Ladder Peak
5	200	150.00	1,136.4	Ladder Peak
6	300	150.00	757.6	Ladder Peak
7	400	150.00	568.2	Ladder Peak
8	500	150.00	454.5	Ladder Peak
9	600	150.00	378.8	Ladder Peak
10	700	150.00	324.7	Ladder Peak
11	1,000	150.00	227.3	Ladder Peak
12	2,000	150.00	113.6	Ladder Peak
13	3,000	150.00	75.8	Ladder Peak
14	7,000	150.00	32.5	Ladder Peak
15	10,380	75.00	10.9	Upper Marker

Assay Class: High Sensitivity DNA Assay
 Data Path: C:\...ents and Settings\Bioanalyzer\2013-10-07\2013-10-07_003.xad

Created: 10/7/2013 1:16:23 PM
 Modified: 10/7/2013 1:58:58 PM

Electropherogram Summary Continued ...



Overall Results for sample 1 : sample 1

Number of peaks found: 8 Corr. Area 1: 252.4
 Noise: 0.1

Peak table for sample 1 : sample 1

Peak	Size [bp]	Conc. [pg/μl]	Molarity [pmol/l]	Observations
1	35	125.00	5,411.3	Lower Marker
2	83	17.65	323.0	
3	248	51.43	314.3	
4	272	44.91	250.0	
5	284	19.39	103.5	
6	295	35.68	183.3	
7	306	33.41	165.7	
8	335	21.32	96.3	
9	343	62.38	275.3	
10	10,380	75.00	10.9	Upper Marker

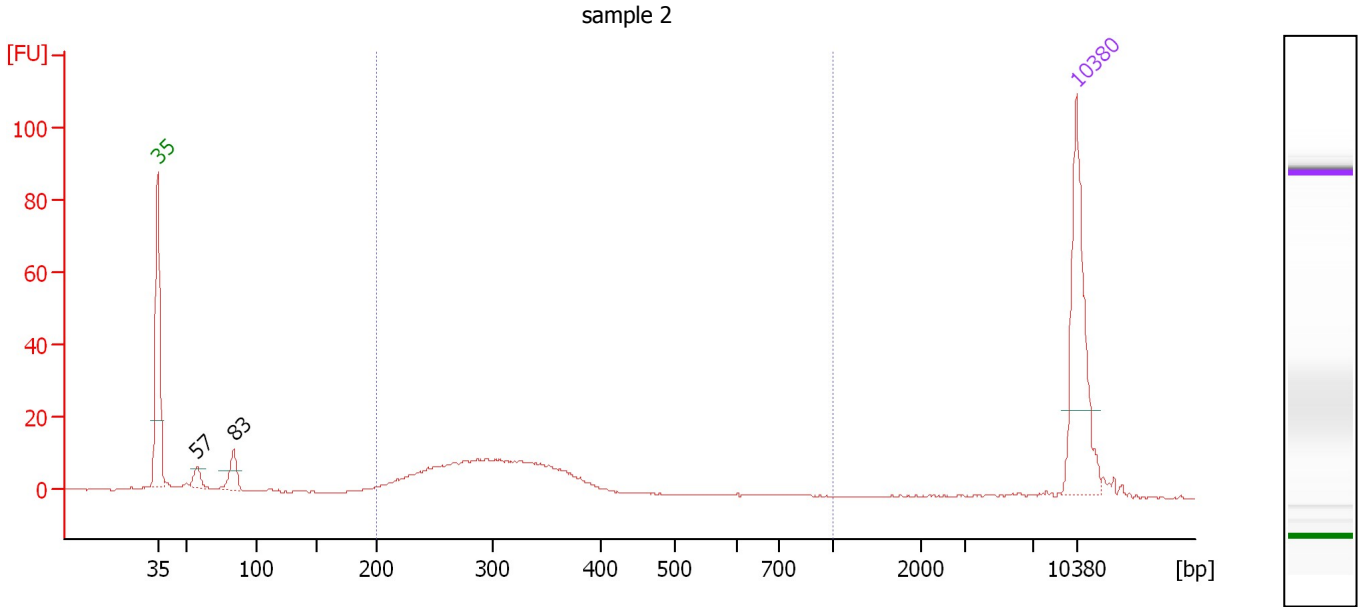
Region table for sample 1 : sample 1

From [bp]	To [bp]	Average Size [bp]	Molarity [pmol/l]	Conc. [pg/μl]	Corr. Area	% of Total	Size distribution in CV [%]	Color
200	1,000	303	2,087.9	407.16	252.4	85	14.5	Blue

Assay Class: High Sensitivity DNA Assay
 Data Path: C:\...ents and Settings\Bioanalyzer\2013-10-07\2013-10-07_003.xad

Created: 10/7/2013 1:16:23 PM
 Modified: 10/7/2013 1:58:58 PM

Electropherogram Summary Continued ...



Overall Results for sample 2 : sample 2

Number of peaks found: 2 Corr. Area 1: 165.6
 Noise: 0.1

Peak table for sample 2 : sample 2

Peak	Size [bp]	Conc. [pg/μl]	Molarity [pmol/l]	Observations
1	35	125.00	5,411.3	Lower Marker
2	57	10.78	284.8	
3	83	20.39	370.6	
4	10,380	75.00	10.9	Upper Marker

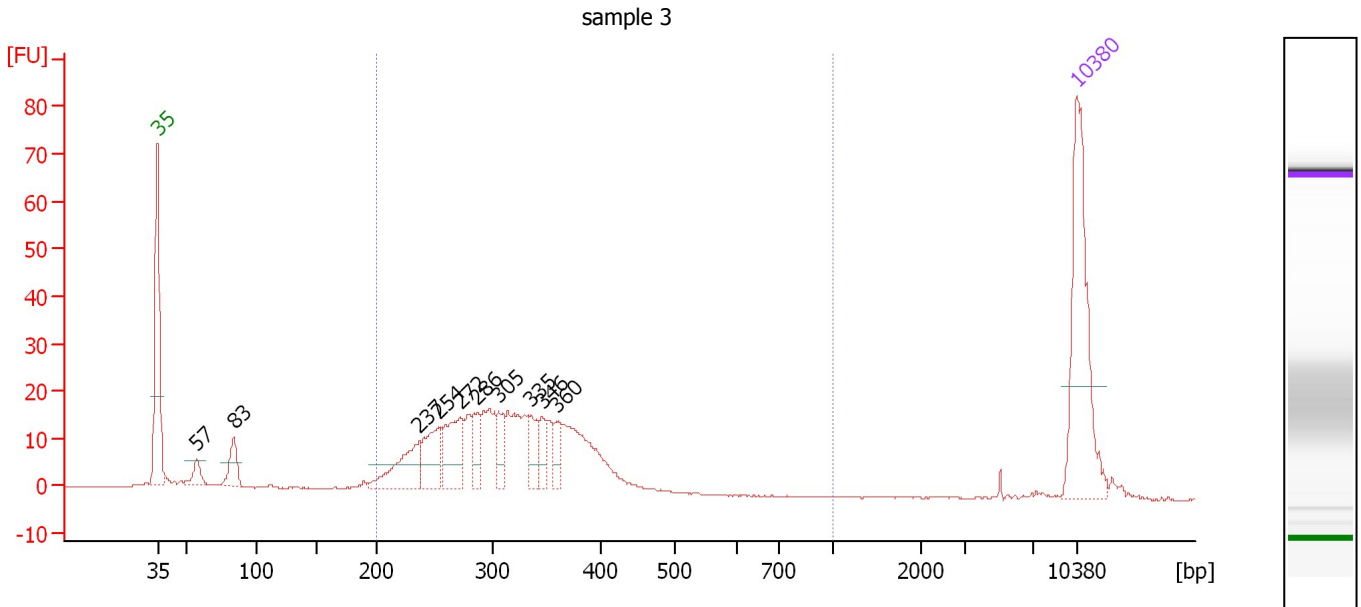
Region table for sample 2 : sample 2

From [bp]	To [bp]	Average Size [bp]	Molarity [pmol/l]	Conc. [pg/μl]	Corr. Area	% of Total	Size distribution in CV [%]	Color
200	1,000	302	900.0	173.81	165.6	78	16.2	Blue

Assay Class: High Sensitivity DNA Assay
 Data Path: C:\...ents and Settings\Bioanalyzer\2013-10-07\2013-10-07_003.xad

Created: 10/7/2013 1:16:23 PM
 Modified: 10/7/2013 1:58:58 PM

Electropherogram Summary Continued ...



Overall Results for sample 3 : sample 3

Number of peaks found: 10 Corr. Area 1: 343.8
 Noise: 0.1

Peak table for sample 3 : sample 3

Peak	Size [bp]	Conc. [pg/μl]	Molarity [pmol/l]	Observations
1	35	125.00	5,411.3	Lower Marker
2	57	11.59	307.9	
3	83	20.80	378.9	
4	237	40.72	260.4	
5	254	33.75	201.5	
6	272	42.37	236.3	
7	286	17.55	92.8	
8	305	15.67	77.9	
9	335	16.75	75.8	
10	346	13.14	57.6	
11	360	12.96	54.6	
12	10,380	75.00	10.9	Upper Marker

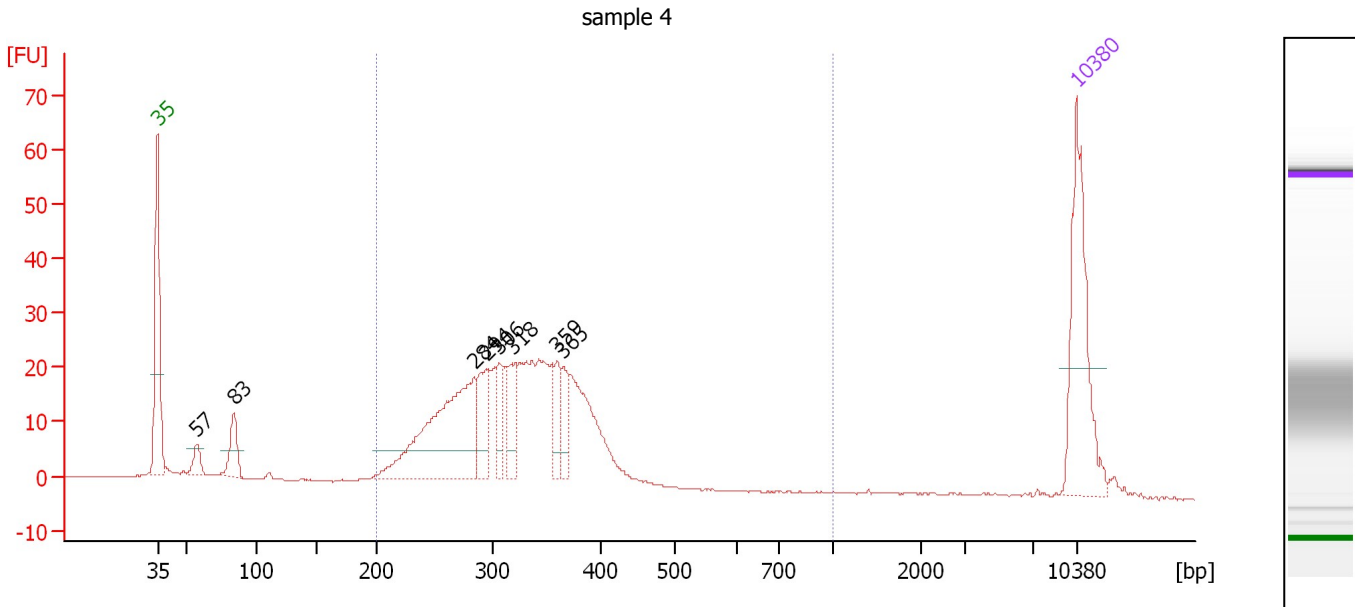
Region table for sample 3 : sample 3

From [bp]	To [bp]	Average Size [bp]	Molarity [pmol/l]	Conc. [pg/μl]	Corr. Area	% of Total	Size distribution in CV [%]	Color
200	1,000	313	1,966.5	389.90	343.8	86	17.9	Blue

Assay Class: High Sensitivity DNA Assay
 Data Path: C:\...ents and Settings\Bioanalyzer\2013-10-07\2013-10-07_003.xad

Created: 10/7/2013 1:16:23 PM
 Modified: 10/7/2013 1:58:58 PM

Electropherogram Summary Continued ...



Overall Results for sample 4 : sample 4

Number of peaks found: 8 Corr. Area 1: 424.7
 Noise: 0.2

Peak table for sample 4 : sample 4

Peak	Size [bp]	Conc. [pg/μl]	Molarity [pmol/l]	Observations
1	35	125.00	5,411.3	Lower Marker
2	57	14.26	380.6	
3	83	28.68	521.4	
4	284	154.95	828.1	
5	294	38.56	198.6	
6	306	24.72	122.5	
7	318	31.59	150.6	
8	359	21.96	92.6	
9	365	20.68	85.8	
10	10,380	75.00	10.9	Upper Marker

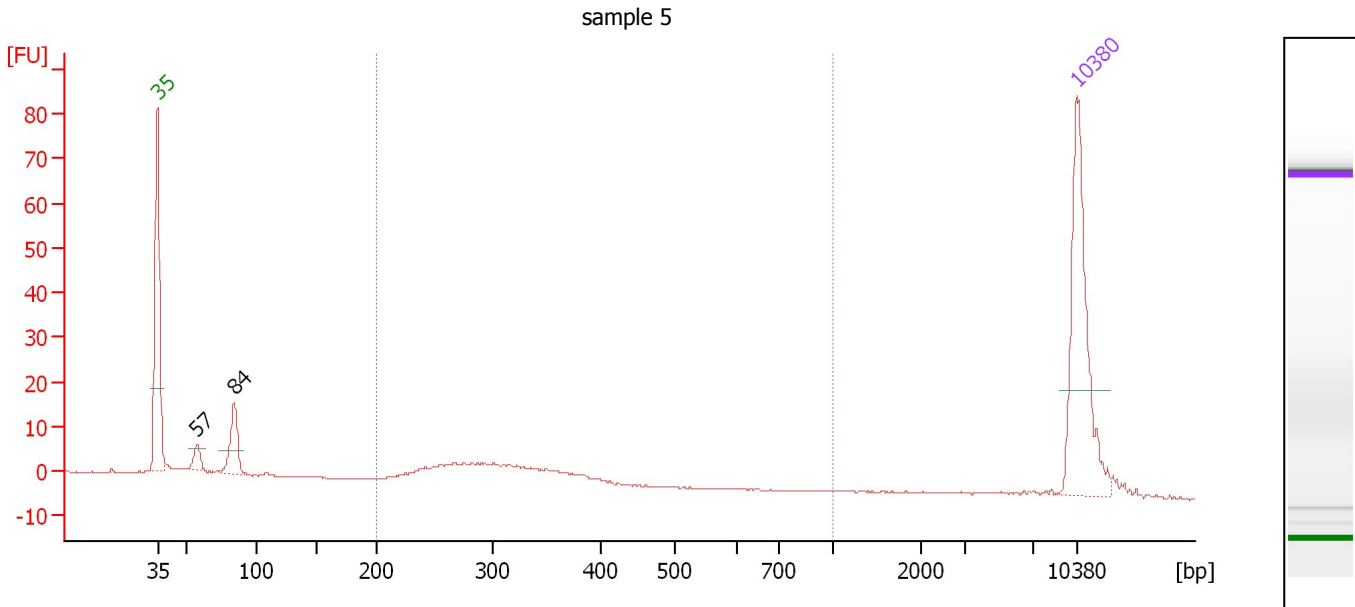
Region table for sample 4 : sample 4

From [bp]	To [bp]	Average Size [bp]	Molarity [pmol/l]	Conc. [pg/μl]	Corr. Area	% of Total	Size distribution in CV [%]	Color
200	1,000	321	2,795.3	570.90	424.7	89	16.4	Blue

Assay Class: High Sensitivity DNA Assay
 Data Path: C:\...ents and Settings\Bioanalyzer\2013-10-07\2013-10-07_003.xad

Created: 10/7/2013 1:16:23 PM
 Modified: 10/7/2013 1:58:58 PM

Electropherogram Summary Continued ...



Overall Results for sample 5 : sample 5

Number of peaks found: 2 Corr. Area 1: 68.8
 Noise: 0.2

Peak table for sample 5 : sample 5

Peak	Size [bp]	Conc. [pg/μl]	Molarity [pmol/l]	Observations
1	35	125.00	5,411.3	Lower Marker
2	57	11.01	293.5	
3	84	31.70	575.1	
4	10,380	75.00	10.9	Upper Marker

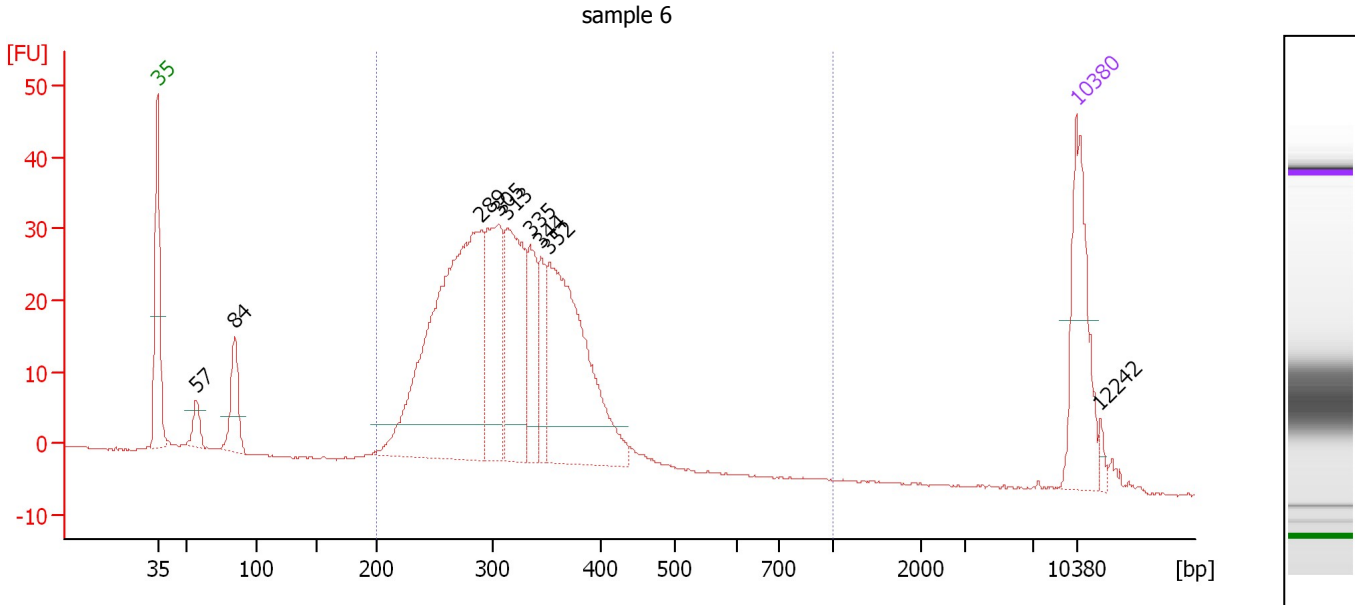
Region table for sample 5 : sample 5

From [bp]	To [bp]	Average Size [bp]	Molarity [pmol/l]	Conc. [pg/μl]	Corr. Area	% of Total	Size distribution in CV [%]	Color
200	1,000	305	392.7	76.60	68.8	56	15.7	Blue

Assay Class: High Sensitivity DNA Assay
 Data Path: C:\...ents and Settings\Bioanalyzer\2013-10-07\2013-10-07_003.xad

Created: 10/7/2013 1:16:23 PM
 Modified: 10/7/2013 1:58:58 PM

Electropherogram Summary Continued ...



Overall Results for sample 6 : sample 6

Number of peaks found: 9 Corr. Area 1: 596.6
 Noise: 0.1

Peak table for sample 6 : sample 6

Peak	Size [bp]	Conc. [pg/μl]	Molarity [pmol/l]	Observations
1	35	125.00	5,411.3	Lower Marker
2	57	21.16	564.4	
3	84	53.16	960.5	
4	289	399.58	2,092.3	
5	305	125.20	622.2	
6	313	141.14	683.5	
7	335	60.89	275.7	
8	344	41.36	182.0	
9	352	236.41	1,016.7	
10	10,380	75.00	10.9	Upper Marker
11	12,242	0.00	0.0	

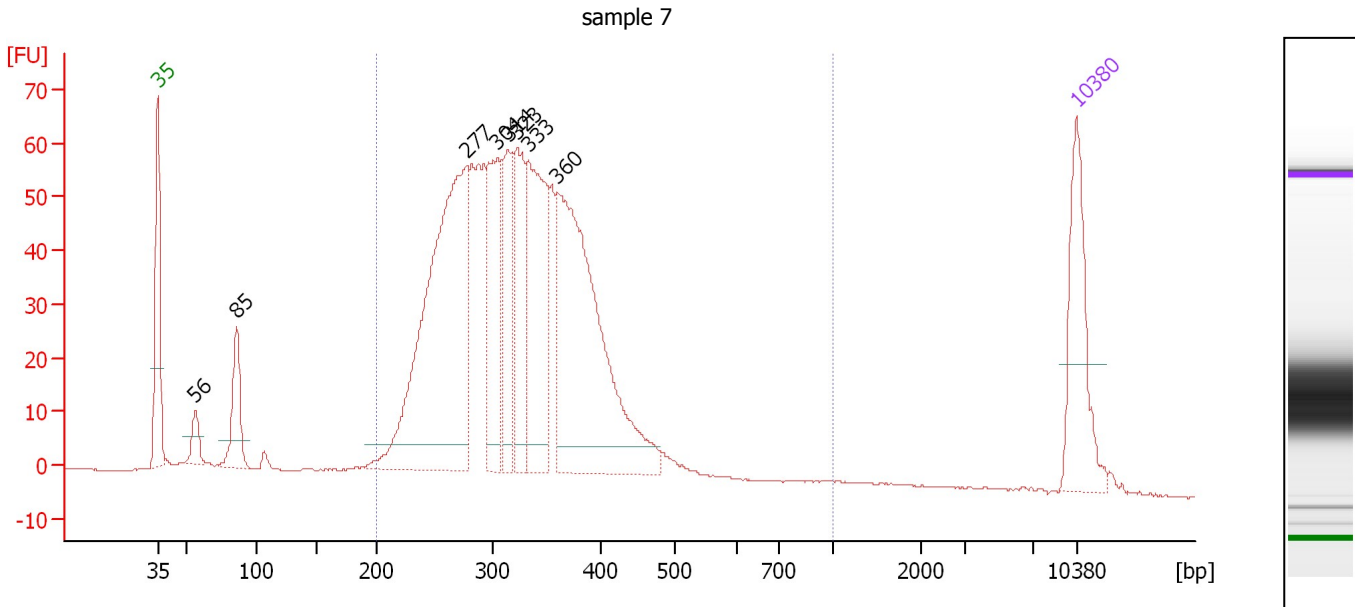
Region table for sample 6 : sample 6

From [bp]	To [bp]	Average Size [bp]	Molarity [pmol/l]	Conc. [pg/μl]	Corr. Area	% of Total	Size distribution in CV [%]	Color
200	1,000	316	5,345.2	1,076.05	596.6	92	17.0	Blue

Assay Class: High Sensitivity DNA Assay
 Data Path: C:\...ents and Settings\Bioanalyzer\2013-10-07\2013-10-07_003.xad

Created: 10/7/2013 1:16:23 PM
 Modified: 10/7/2013 1:58:58 PM

Electropherogram Summary Continued ...



Overall Results for sample 7 : sample 7

Number of peaks found: 8 Corr. Area 1: 1,189.1
 Noise: 0.1

Peak table for sample 7 : sample 7

Peak	Size [bp]	Conc. [pg/μl]	Molarity [pmol/l]	Observations
1	35	125.00	5,411.3	Lower Marker
2	56	23.70	644.3	
3	85	63.57	1,129.4	
4	277	425.48	2,329.7	
5	304	117.83	587.7	
6	314	85.63	413.5	
7	323	99.52	467.5	
8	333	172.87	786.4	
9	360	338.20	1,423.3	
10	10,380	75.00	10.9	Upper Marker

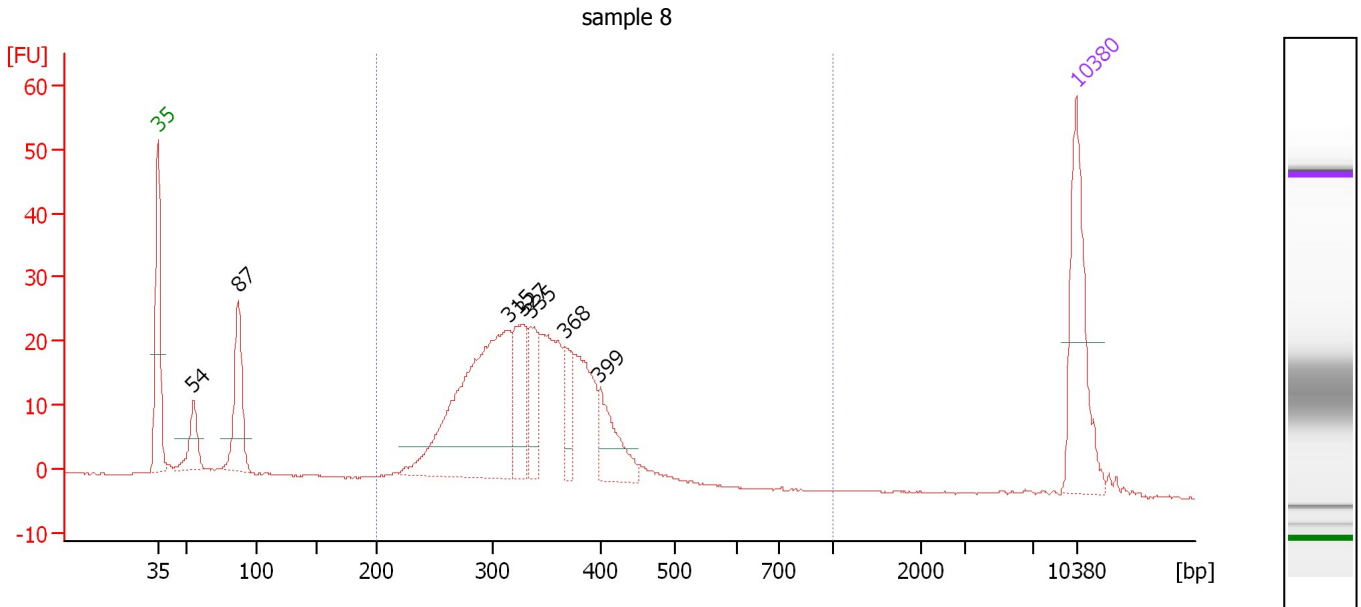
Region table for sample 7 : sample 7

From [bp]	To [bp]	Average Size [bp]	Molarity [pmol/l]	Conc. [pg/μl]	Corr. Area	% of Total	Size distribution in CV [%]	Color
200	1,000	329	7,625.4	1,566.44	1,189.1	92	22.9	Blue

Assay Class: High Sensitivity DNA Assay
 Data Path: C:\...ents and Settings\Bioanalyzer\2013-10-07\2013-10-07_003.xad

Created: 10/7/2013 1:16:23 PM
 Modified: 10/7/2013 1:58:58 PM

Electropherogram Summary Continued ...



Overall Results for sample 8 : sample 8

Number of peaks found: 7 Corr. Area 1: 393.0
 Noise: 0.1

Peak table for sample 8 : sample 8

Peak	Size [bp]	Conc. [pg/μl]	Molarity [pmol/l]	Observations
1	35	125.00	5,411.3	Lower Marker
2	54	38.44	1,069.5	
3	87	82.15	1,434.2	
4	315	250.24	1,202.8	
5	327	63.20	292.8	
6	335	43.30	196.1	
7	368	30.81	127.0	
8	399	44.90	170.4	
9	10,380	75.00	10.9	Upper Marker

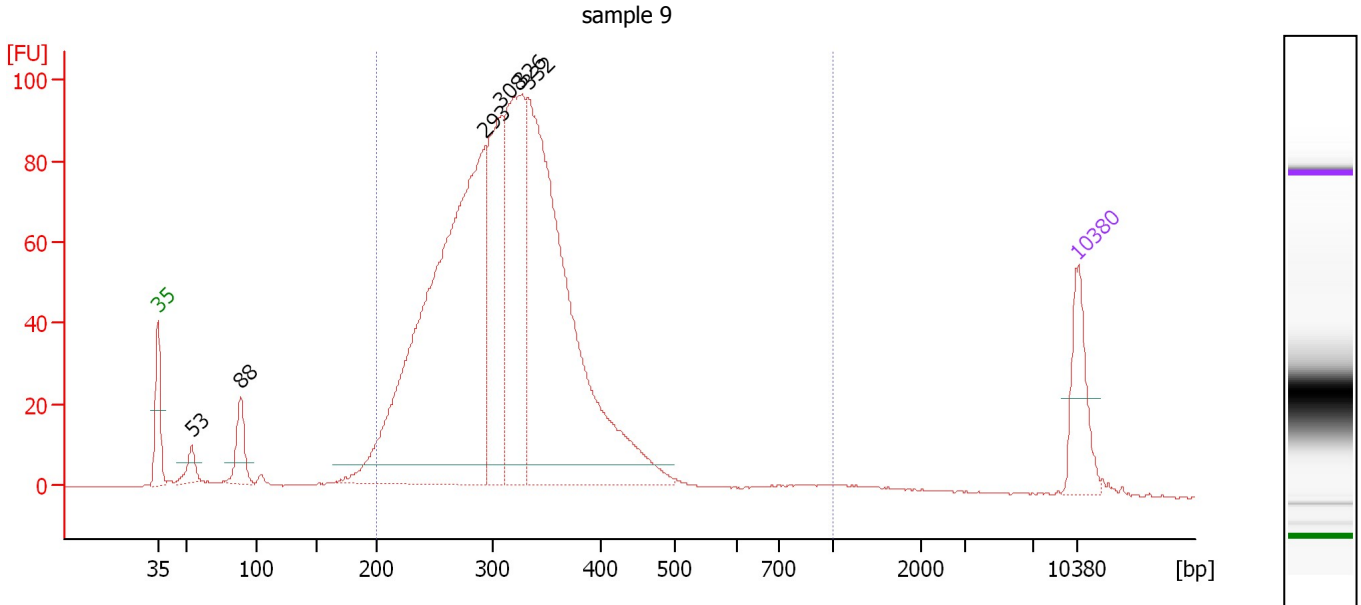
Region table for sample 8 : sample 8

From [bp]	To [bp]	Average Size [bp]	Molarity [pmol/l]	Conc. [pg/μl]	Corr. Area	% of Total	Size distribution in CV [%]	Color
200	1,000	336	3,004.6	645.66	393.0	85	15.7	Blue

Assay Class: High Sensitivity DNA Assay
 Data Path: C:\...ents and Settings\Bioanalyzer\2013-10-07\2013-10-07_003.xad

Created: 10/7/2013 1:16:23 PM
 Modified: 10/7/2013 1:58:58 PM

Electropherogram Summary Continued ...



Overall Results for sample 9 : sample 9

Number of peaks found: 6 Corr. Area 1: 1,576.5
 Noise: 0.2

Peak table for sample 9 : sample 9

Peak	Size [bp]	Conc. [pg/μl]	Molarity [pmol/l]	Observations
1	35	125.00	5,411.3	Lower Marker
2	53	35.24	1,005.5	
3	88	73.59	1,265.2	
4	293	1,116.89	5,775.9	
5	308	317.95	1,566.2	
6	326	407.07	1,889.7	
7	332	890.75	4,061.9	
8	10,380	75.00	10.9	Upper Marker

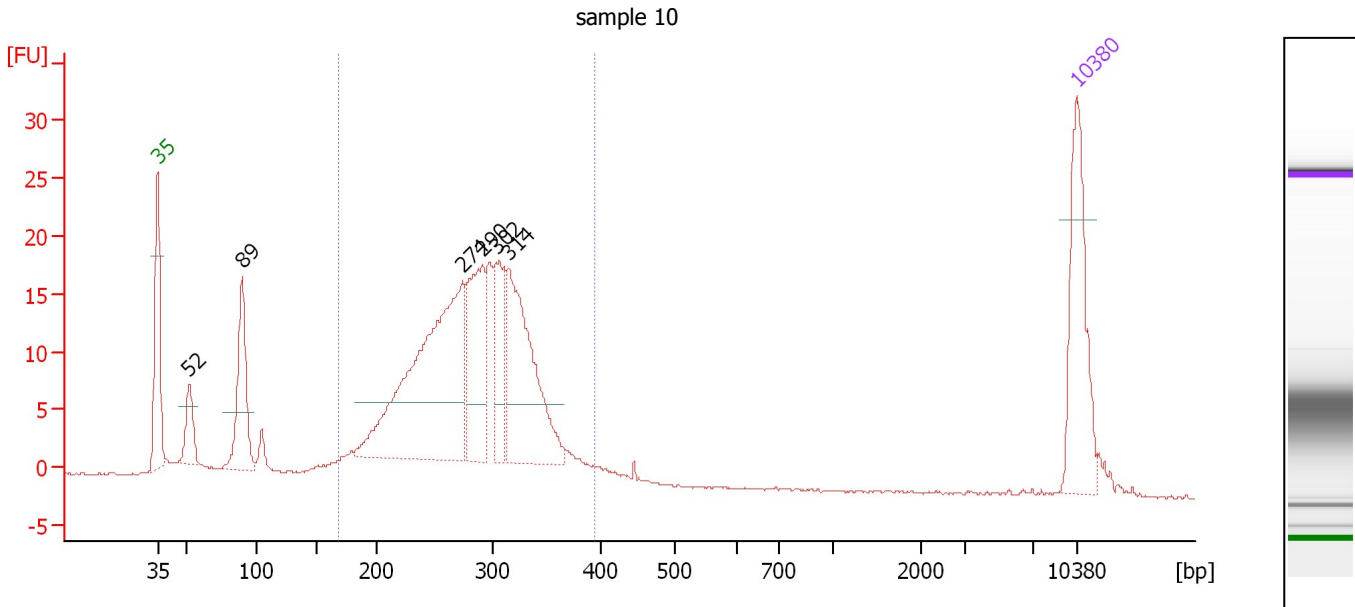
Region table for sample 9 : sample 9

From [bp]	To [bp]	Average Size [bp]	Molarity [pmol/l]	Conc. [pg/μl]	Corr. Area	% of Total	Size distribution in CV [%]	Color
200	1,000	320	14,413.1	2,880.19	1,576.5	93	24.3	Blue

Assay Class: High Sensitivity DNA Assay
 Data Path: C:\...ents and Settings\Bioanalyzer\2013-10-07\2013-10-07_003.xad

Created: 10/7/2013 1:16:23 PM
 Modified: 10/7/2013 1:58:58 PM

Electropherogram Summary Continued ...



Overall Results for sample 10 : sample 10

Number of peaks found: 6 Corr. Area 1: 277.0
 Noise: 0.1

Peak table for sample 10 : sample 10

Peak	Size [bp]	Conc. [pg/μl]	Molarity [pmol/l]	Observations
1	35	125.00	5,411.3	Lower Marker
2	52	35.41	1,041.0	
3	89	93.87	1,591.8	
4	274	293.76	1,625.2	
5	290	105.86	552.5	
6	302	50.90	255.2	
7	314	152.60	736.7	
8	10,380	75.00	10.9	Upper Marker

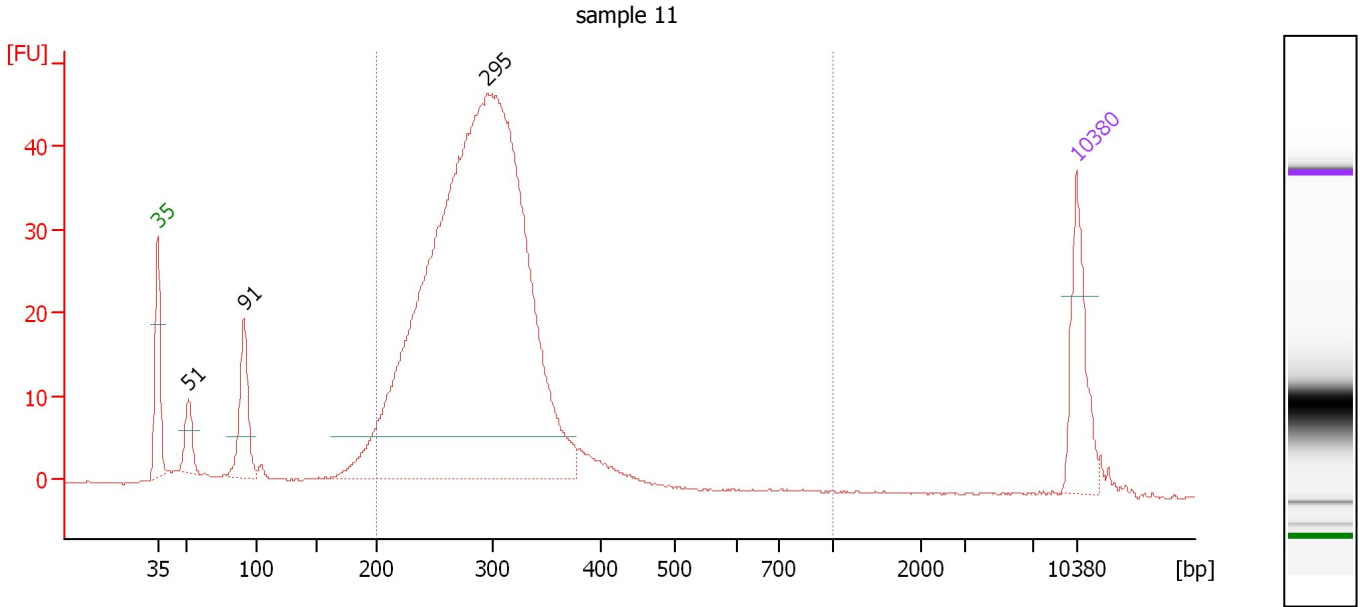
Region table for sample 10 : sample 10

From [bp]	To [bp]	Average Size [bp]	Molarity [pmol/l]	Conc. [pg/μl]	Corr. Area	% of Total	Size distribution in CV [%]	Color
168	396	282	4,609.6	830.43	277.0	83	15.9	Blue

Assay Class: High Sensitivity DNA Assay
 Data Path: C:\...ents and Settings\Bioanalyzer\2013-10-07\2013-10-07_003.xad

Created: 10/7/2013 1:16:23 PM
 Modified: 10/7/2013 1:58:58 PM

Electropherogram Summary Continued ...



Overall Results for sample 11 : sample 11

Number of peaks found: 3 Corr. Area 1: 620.9
 Noise: 0.1

Peak table for sample 11 : sample 11

Peak	Size [bp]	Conc. [pg/μl]	Molarity [pmol/l]	Observations
1	35	125.00	5,411.3	Lower Marker
2	51	44.97	1,337.0	
3	91	105.19	1,756.4	
4	295	1,665.01	8,551.9	
5	10,380	75.00	10.9	Upper Marker

Region table for sample 11 : sample 11

From [bp]	To [bp]	Average Size [bp]	Molarity [pmol/l]	Conc. [pg/μl]	Corr. Area	% of Total	Size distribution in CV [%]	Color
200	1,000	291	9,586.7	1,795.49	620.9	88	16.8	Blue

Assay Class: High Sensitivity DNA Assay
Data Path: C:\...ents and Settings\Bioanalyzer\2013-10-07\2013-10-07_003.xad

Created: 10/7/2013 1:16:23 PM
Modified: 10/7/2013 1:58:58 PM

Gel Image

