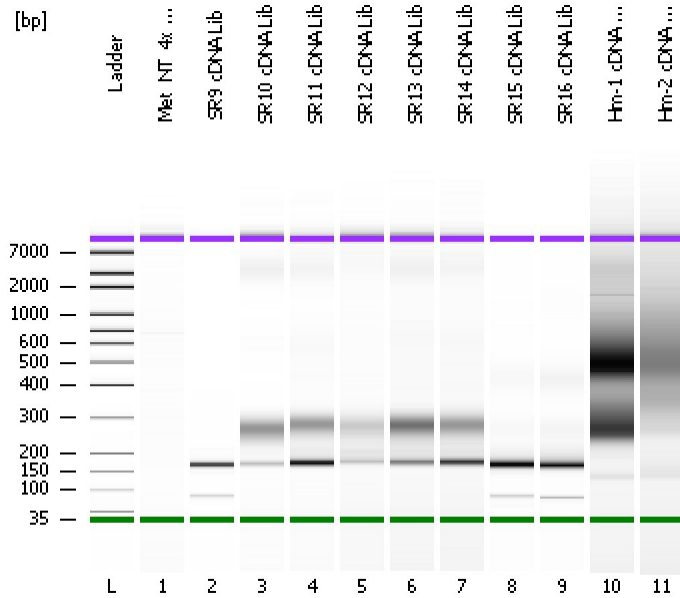


Assay Class: High Sensitivity DNA Assay
Data Path: C:\...ents and Settings\Bioanalyzer\2013-10-08\2013-10-08_001.xad

Created: 10/8/2013 9:54:46 AM
Modified: 10/8/2013 10:50:22 AM

Electrophoresis File Run Summary



Instrument Information:

Instrument Name: DE13701086 Firmware: C.01.069
Serial#: DE13701086 Type: G2938B

Assay Information:

Assay Origin Path: C:\Program Files\Agilent\2100 bioanalyzer\2100 expert\assays\dsDNA\High Sensitivity DNA.xsy
Assay Class: High Sensitivity DNA Assay
Version: 1.03
Assay Comments: Copyright © 2003-2010 Agilent Technologies

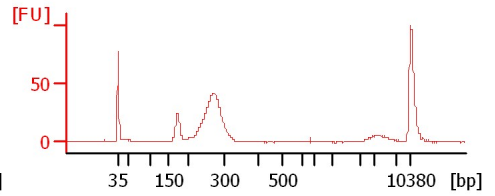
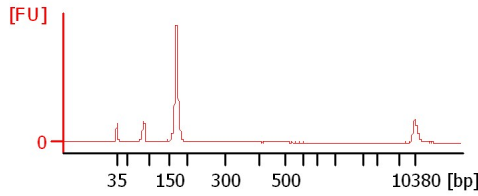
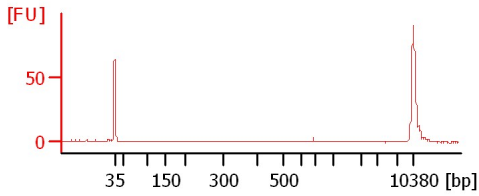
Chip Information:

Chip Lot #:
Reagent Kit Lot #:
Chip Comments:

Met_NT_4x Pool 1:20

SR9 cDNA Lib

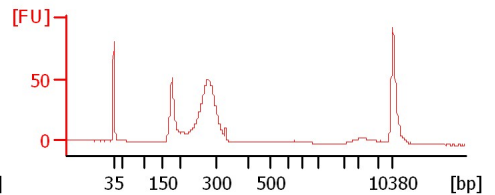
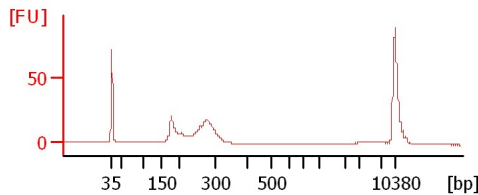
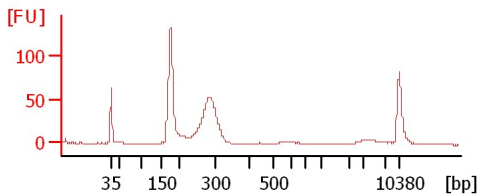
SR10 cDNA Lib



SR11 cDNA Lib

SR12 cDNA Lib

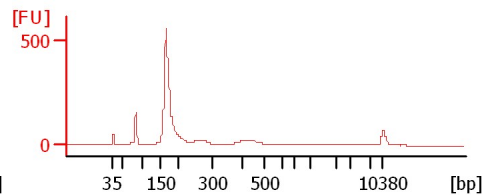
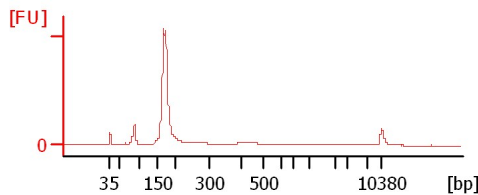
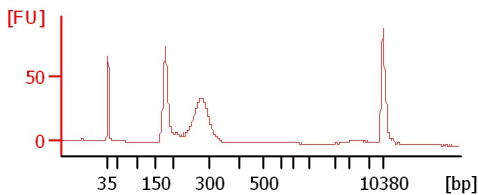
SR13 cDNA Lib



SR14 cDNA Lib

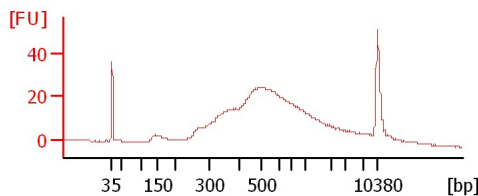
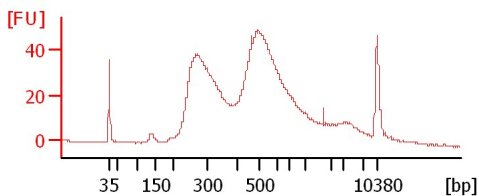
SR15 cDNA Lib

SR16 cDNA Lib



Hm-1 cDNA Lib

Hm-2 cDNA Lib



Assay Class: High Sensitivity DNA Assay
Data Path: C:\...ents and Settings\Bioanalyzer\2013-10-08\2013-10-08_001.xad

Created: 10/8/2013 9:54:46 AM
Modified: 10/8/2013 10:50:22 AM

Electrophoresis File Run Summary (Chip Summary)

Sample Name	Sample Comment	Rest. Digest	Status	Observation	Result Label	Result Color
Met_NT_4x Pool 1:20		<input type="checkbox"/>	✓			
SR9 cDNA Lib		<input type="checkbox"/>	✓			
SR10 cDNA Lib		<input type="checkbox"/>	✓			
SR11 cDNA Lib		<input type="checkbox"/>	✓			
SR12 cDNA Lib		<input type="checkbox"/>	✓			
SR13 cDNA Lib		<input type="checkbox"/>	✓			
SR14 cDNA Lib		<input type="checkbox"/>	✓			
SR15 cDNA Lib		<input type="checkbox"/>	✓			
SR16 cDNA Lib		<input type="checkbox"/>	✓			
Hm-1 cDNA Lib		<input type="checkbox"/>	✓			
Hm-2 cDNA Lib		<input type="checkbox"/>	✓			
Ladder		<input type="checkbox"/>	✓			

Chip Lot #

Reagent Kit Lot #

Chip Comments :

Assay Class: High Sensitivity DNA Assay
Data Path: C:\...ents and Settings\Bioanalyzer\2013-10-08\2013-10-08_001.xad

Created: 10/8/2013 9:54:46 AM
Modified: 10/8/2013 10:50:22 AM

Electrophoresis Assay Details

General Analysis Settings

Number of Available Sample and Ladder Wells (Max.) : 12
Minimum Visible Range [s] : 32
Maximum Visible Range [s] : 138
Start Analysis Time Range [s] : 33
End Analysis Time Range [s] : 137.5
Ladder Concentration [pg/μl] : 1950
Uses Standard Area for Ladder Fragments
Lower Marker Concentration [pg/μl] : 125
Upper Marker Concentration [pg/μl] : 75
Used Upper Marker for Quantitation
Standard Curve Fit is Point to Point
Show Data Aligned to Lower and Upper Marker

Integrator Settings

Integration Start Time [s] : 33.05
Integration End Time [s] : 137
Slope Threshold : 0.8
Height Threshold [FU] : 5
Area Threshold : 0.1
Width Threshold [s] : 0.6
Baseline Plateau [s] : 0.5

Filter Settings

Filter Width [s] : 0.5
Polynomial Order : 4

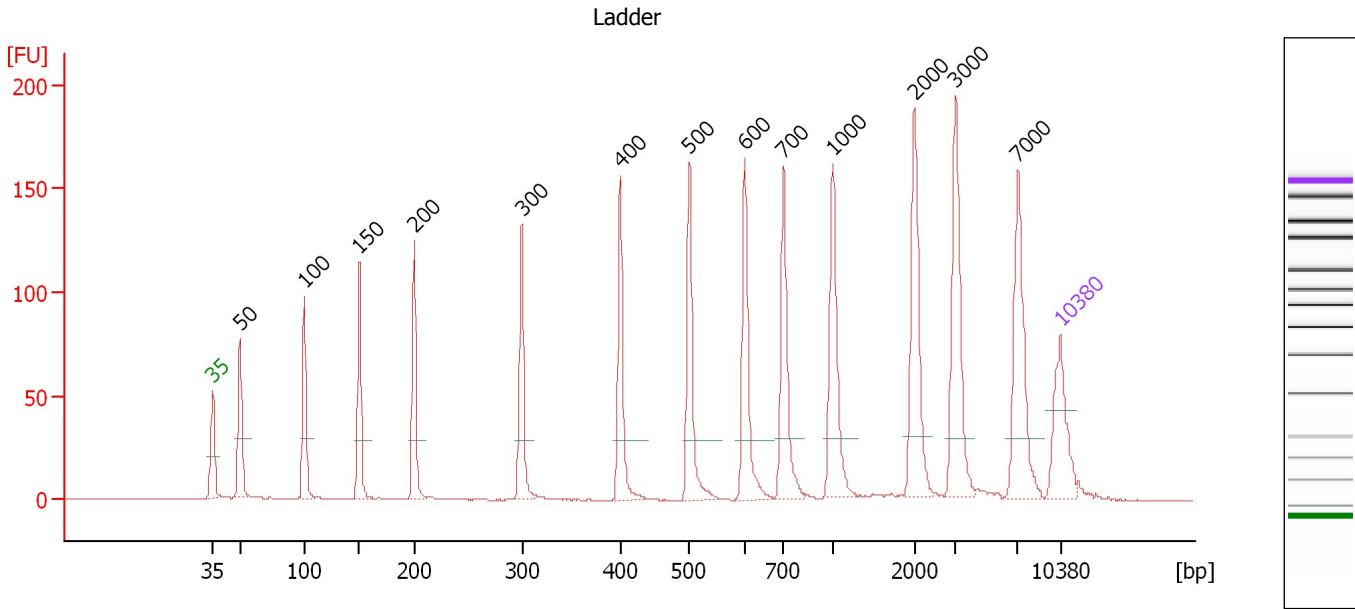
Ladder

Ladder Peak	Size	Area
1	35	160
2	50	210
3	100	208
4	150	221
5	200	242
6	300	270
7	400	305
8	500	306
9	600	336
10	700	321
11	1000	366
12	2000	413
13	3000	411
14	7000	400
15	10380	214

Assay Class: High Sensitivity DNA Assay
 Data Path: C:\...ents and Settings\Bioanalyzer\2013-10-08\2013-10-08_001.xad

Created: 10/8/2013 9:54:46 AM
 Modified: 10/8/2013 10:50:22 AM

Electropherogram Summary



Overall Results for Ladder

Noise: 0.1

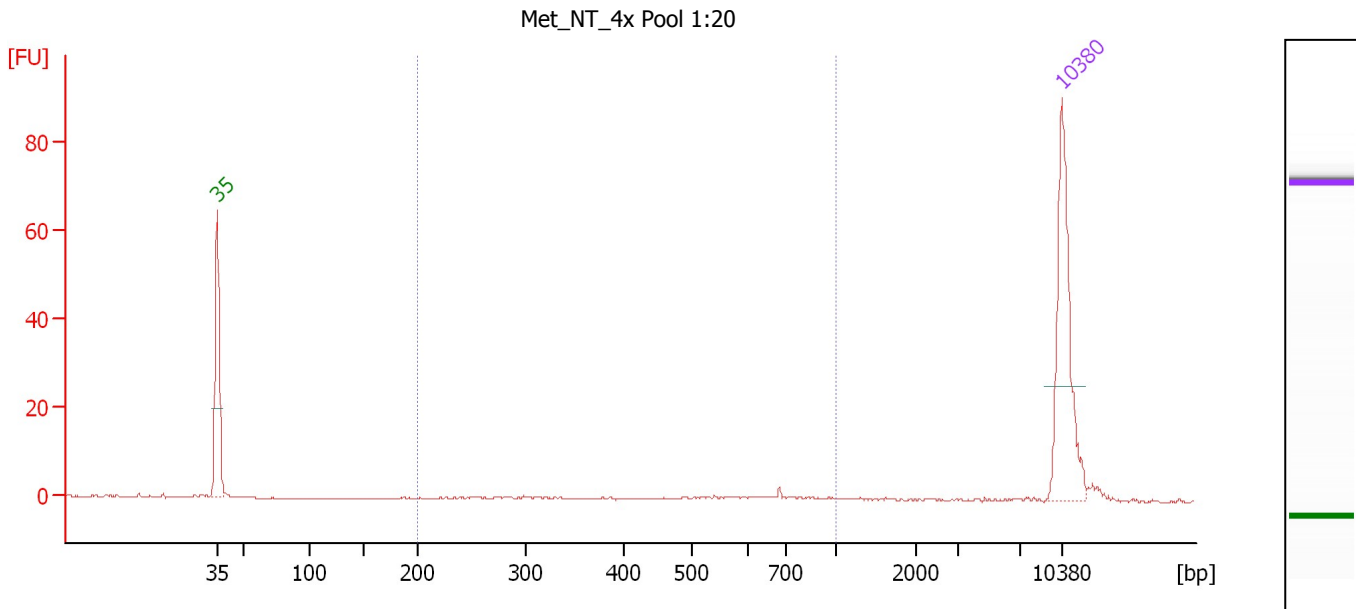
Peak table for Ladder

Peak	Size [bp]	Conc. [pg/μl]	Molarity [pmol/l]	Observations
1	35	125.00	5,411.3	Lower Marker
2	50	150.00	4,545.5	Ladder Peak
3	100	150.00	2,272.7	Ladder Peak
4	150	150.00	1,515.2	Ladder Peak
5	200	150.00	1,136.4	Ladder Peak
6	300	150.00	757.6	Ladder Peak
7	400	150.00	568.2	Ladder Peak
8	500	150.00	454.5	Ladder Peak
9	600	150.00	378.8	Ladder Peak
10	700	150.00	324.7	Ladder Peak
11	1,000	150.00	227.3	Ladder Peak
12	2,000	150.00	113.6	Ladder Peak
13	3,000	150.00	75.8	Ladder Peak
14	7,000	150.00	32.5	Ladder Peak
15	10,380	75.00	10.9	Upper Marker

Assay Class: High Sensitivity DNA Assay
 Data Path: C:\...ents and Settings\Bioanalyzer\2013-10-08\2013-10-08_001.xad

Created: 10/8/2013 9:54:46 AM
 Modified: 10/8/2013 10:50:22 AM

Electropherogram Summary Continued ...



Overall Results for sample 1 : Met_NT_4x Pool 1:20

Number of peaks found: 0 Corr. Area 1: 16.1
 Noise: 0.1

Peak table for sample 1 : Met_NT_4x Pool 1:20

Peak	Size [bp]	Conc. [pg/μl]	Molarity [pmol/l]	Observations
1	35	125.00	5,411.3	Lower Marker
2	10,380	75.00	10.9	Upper Marker

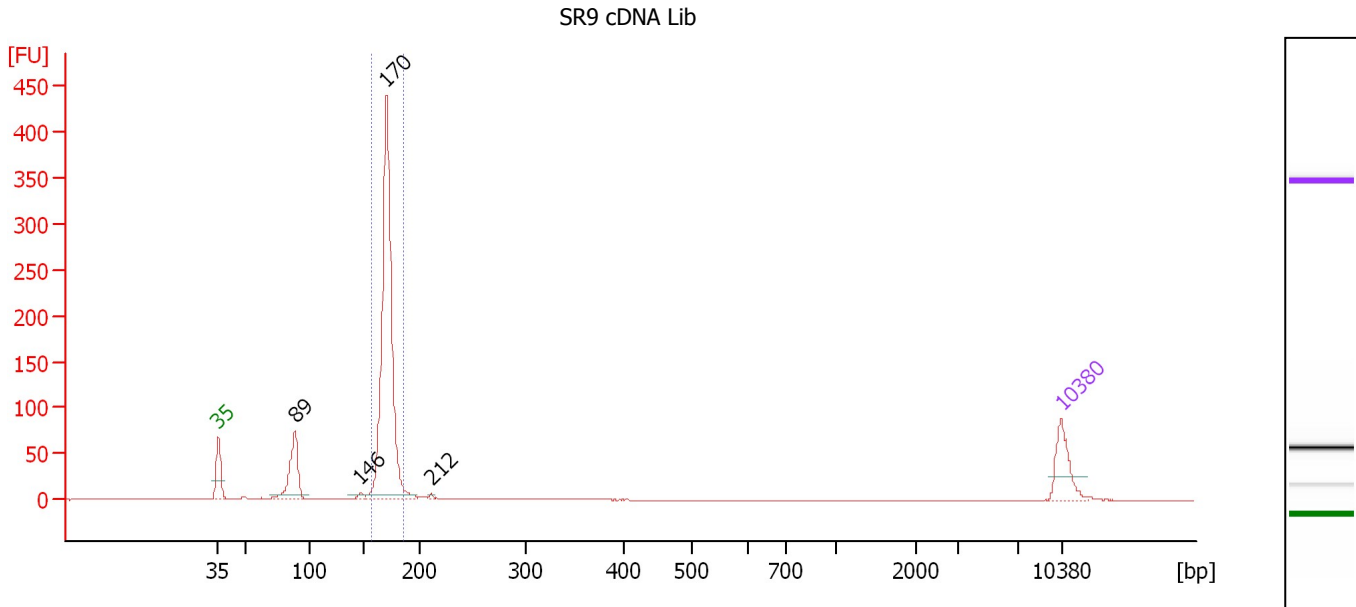
Region table for sample 1 : Met_NT_4x Pool 1:20

From [bp]	To [bp]	Average Size [bp]	Molarity [pmol/l]	Conc. [pg/μl]	Corr. Area	% of Total	Size distribution in CV [%]	Color
200	1,000	565	59.0	17.67	16.1	48	34.5	Blue

Assay Class: High Sensitivity DNA Assay
 Data Path: C:\...ents and Settings\Bioanalyzer\2013-10-08\2013-10-08_001.xad

Created: 10/8/2013 9:54:46 AM
 Modified: 10/8/2013 10:50:22 AM

Electropherogram Summary Continued ...



Overall Results for sample 2 : SR9 cDNA Lib

Number of peaks found: 4 Corr. Area 1: 718.7
 Noise: 0.2

Peak table for sample 2 : SR9 cDNA Lib

Peak	Size [bp]	Conc. [pg/μl]	Molarity [pmol/l]	Observations
1	35	125.00	5,411.3	Lower Marker
2	89	190.27	3,247.6	
3	146	12.07	125.0	
4	170	1,009.56	8,982.6	
5	212	4.44	31.8	
6	10,380	75.00	10.9	Upper Marker

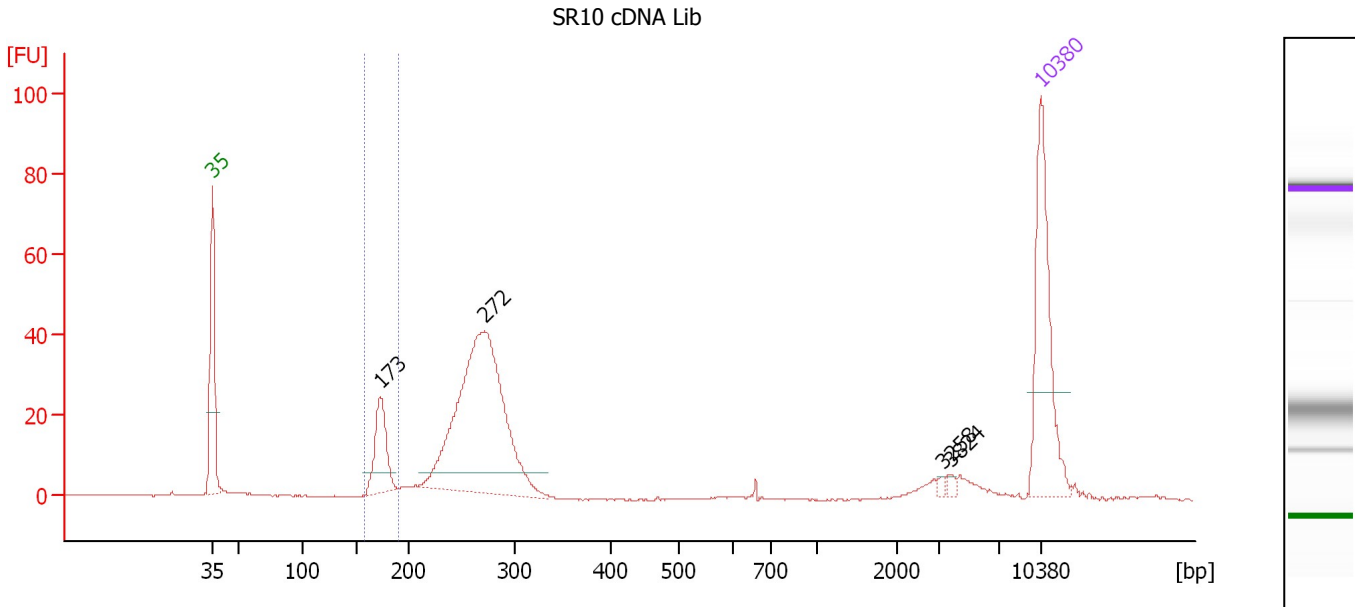
Region table for sample 2 : SR9 cDNA Lib

From [bp]	To [bp]	Average Size [bp]	Molarity [pmol/l]	Conc. [pg/μl]	Corr. Area	% of Total	Size distribution in CV [%]	Color
156	187	171	8,812.8	993.79	718.7	75	2.8	Blue

Assay Class: High Sensitivity DNA Assay
 Data Path: C:\...ents and Settings\Bioanalyzer\2013-10-08\2013-10-08_001.xad

Created: 10/8/2013 9:54:46 AM
 Modified: 10/8/2013 10:50:22 AM

Electropherogram Summary Continued ...



Overall Results for sample 3 : SR10 cDNA Lib

Number of peaks found: 4 Corr. Area 1: 54.0
 Noise: 0.1

Peak table for sample 3 : SR10 cDNA Lib

Peak	Size [bp]	Conc. [pg/μl]	Molarity [pmol/l]	Observations
1	35	125.00	5,411.3	Lower Marker
2	173	57.19	500.4	
3	272	296.65	1,655.4	
4	3,258	1.77	0.8	
5	3,824	2.76	1.1	
6	10,380	75.00	10.9	Upper Marker

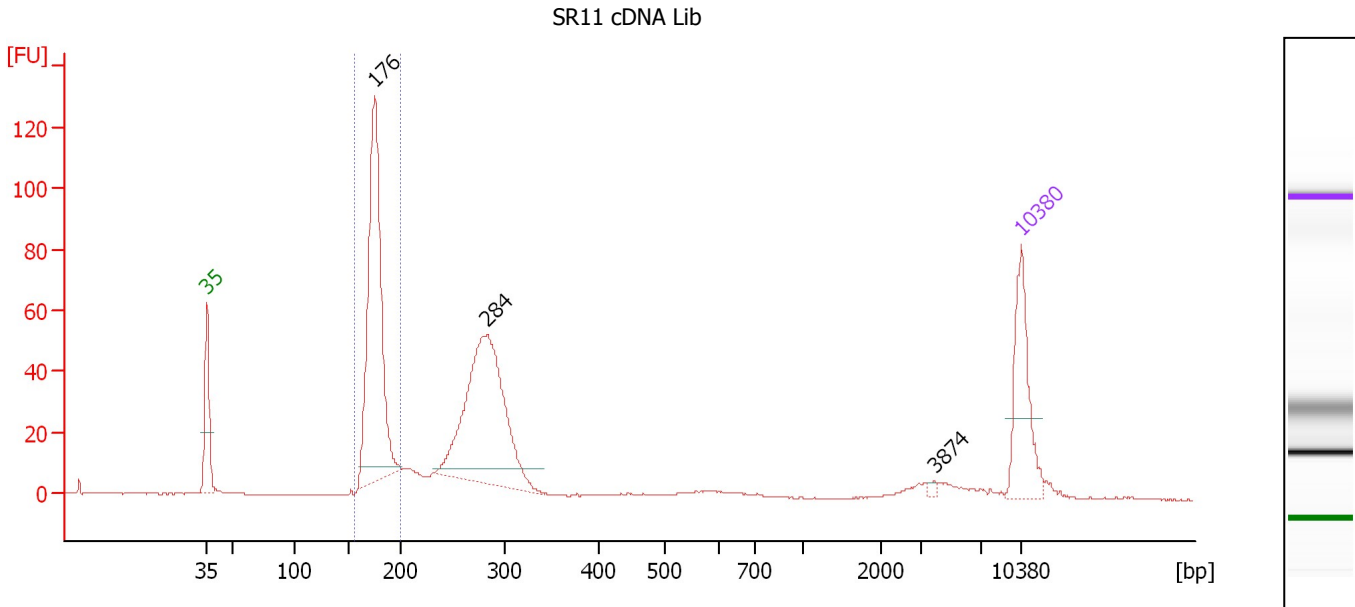
Region table for sample 3 : SR10 cDNA Lib

From [bp]	To [bp]	Average Size [bp]	Molarity [pmol/l]	Conc. [pg/μl]	Corr. Area	% of Total	Size distribution in CV [%]	Color
158	191	174	555.4	63.68	54.0	13	3.3	Blue

Assay Class: High Sensitivity DNA Assay
 Data Path: C:\...ents and Settings\Bioanalyzer\2013-10-08\2013-10-08_001.xad

Created: 10/8/2013 9:54:46 AM
 Modified: 10/8/2013 10:50:22 AM

Electropherogram Summary Continued ...



Overall Results for sample 4 : SR11 cDNA Lib

Number of peaks found: 3 Corr. Area 1: 322.8
 Noise: 0.2

Peak table for sample 4 : SR11 cDNA Lib

Peak	Size [bp]	Conc. [pg/μl]	Molarity [pmol/l]	Observations
1	35	125.00	5,411.3	Lower Marker
2	176	401.32	3,462.3	
3	284	346.94	1,852.0	
4	3,874	3.13	1.2	
5	10,380	75.00	10.9	Upper Marker

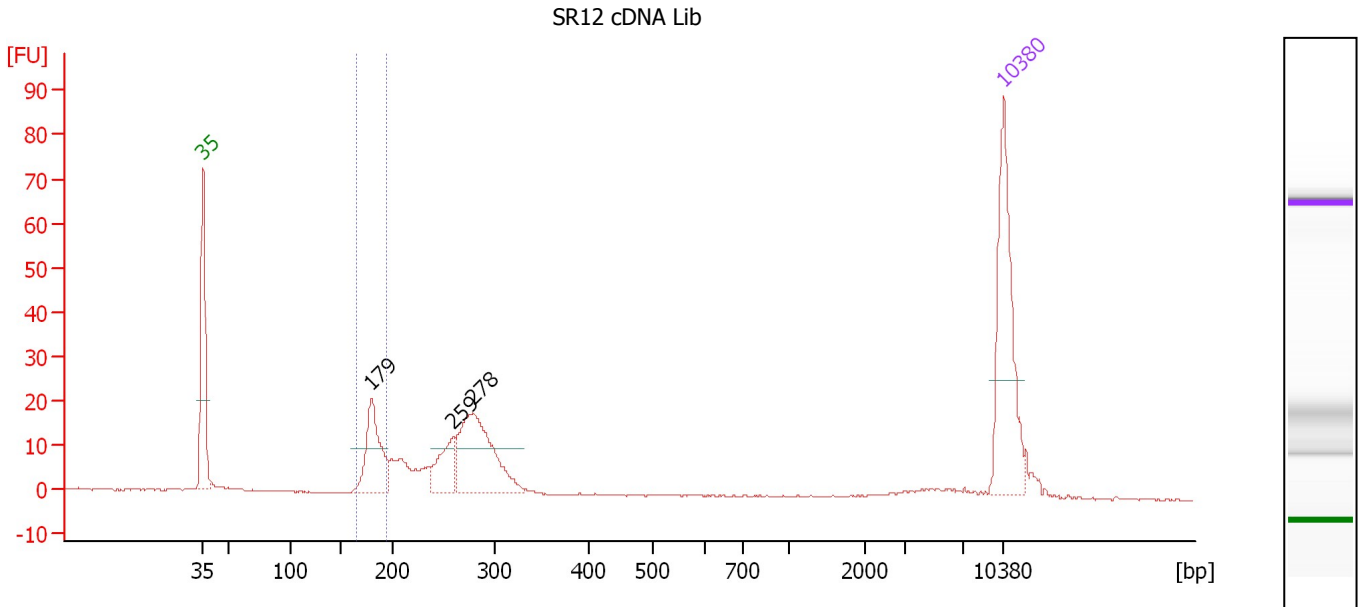
Region table for sample 4 : SR11 cDNA Lib

From [bp]	To [bp]	Average Size [bp]	Molarity [pmol/l]	Conc. [pg/μl]	Corr. Area	% of Total	Size distribution in CV [%]	Color
157	201	177	3,800.5	443.53	322.8	42	4.2	Blue

Assay Class: High Sensitivity DNA Assay
 Data Path: C:\...ents and Settings\Bioanalyzer\2013-10-08\2013-10-08_001.xad

Created: 10/8/2013 9:54:46 AM
 Modified: 10/8/2013 10:50:22 AM

Electropherogram Summary Continued ...



Setpoint Deviations for sample 5 : SR12 cDNA Lib

Height Threshold [FU] : 10

Overall Results for sample 5 : SR12 cDNA Lib

Number of peaks found: 3 Corr. Area 1: 49.7
 Noise: 0.1

Peak table for sample 5 : SR12 cDNA Lib

Peak	Size [bp]	Conc. [pg/µl]	Molarity [pmol/l]	Observations
1	35	125.00	5,411.3	Lower Marker
2	179	68.11	576.9	
3	259	34.39	201.5	
4	278	104.82	572.3	
5	10,380	75.00	10.9	Upper Marker

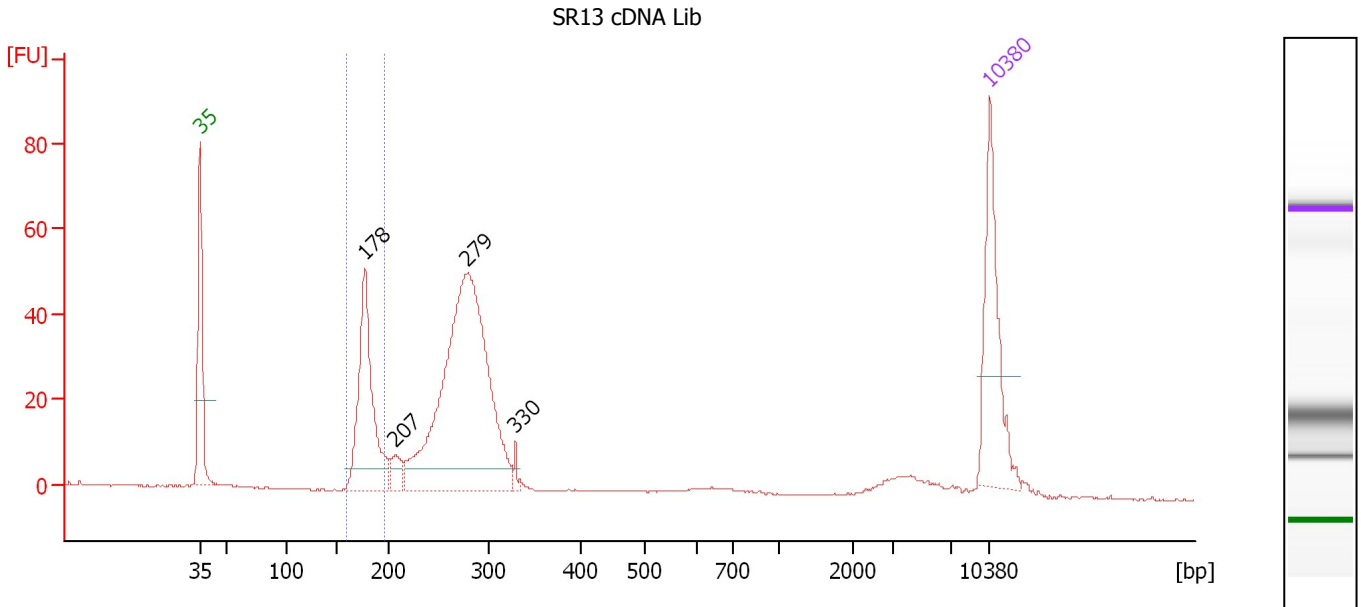
Region table for sample 5 : SR12 cDNA Lib

From [bp]	To [bp]	Average Size [bp]	Molarity [pmol/l]	Conc. [pg/µl]	Corr. Area	% of Total	Size distribution in CV [%]	Color
165	194	181	520.6	62.13	49.7	20	3.5	Blue

Assay Class: High Sensitivity DNA Assay
 Data Path: C:\...ents and Settings\Bioanalyzer\2013-10-08\2013-10-08_001.xad

Created: 10/8/2013 9:54:46 AM
 Modified: 10/8/2013 10:50:22 AM

Electropherogram Summary Continued ...



Overall Results for sample 6 : SR13 cDNA Lib

Number of peaks found: 4 Corr. Area 1: 121.4
 Noise: 0.2

Peak table for sample 6 : SR13 cDNA Lib

Peak	Size [bp]	Conc. [pg/μl]	Molarity [pmol/l]	Observations
1	35	125.00	5,411.3	Lower Marker
2	178	167.03	1,425.4	
3	207	18.61	136.3	
4	279	414.18	2,248.1	
5	330	5.54	25.5	
6	10,380	75.00	10.9	Upper Marker

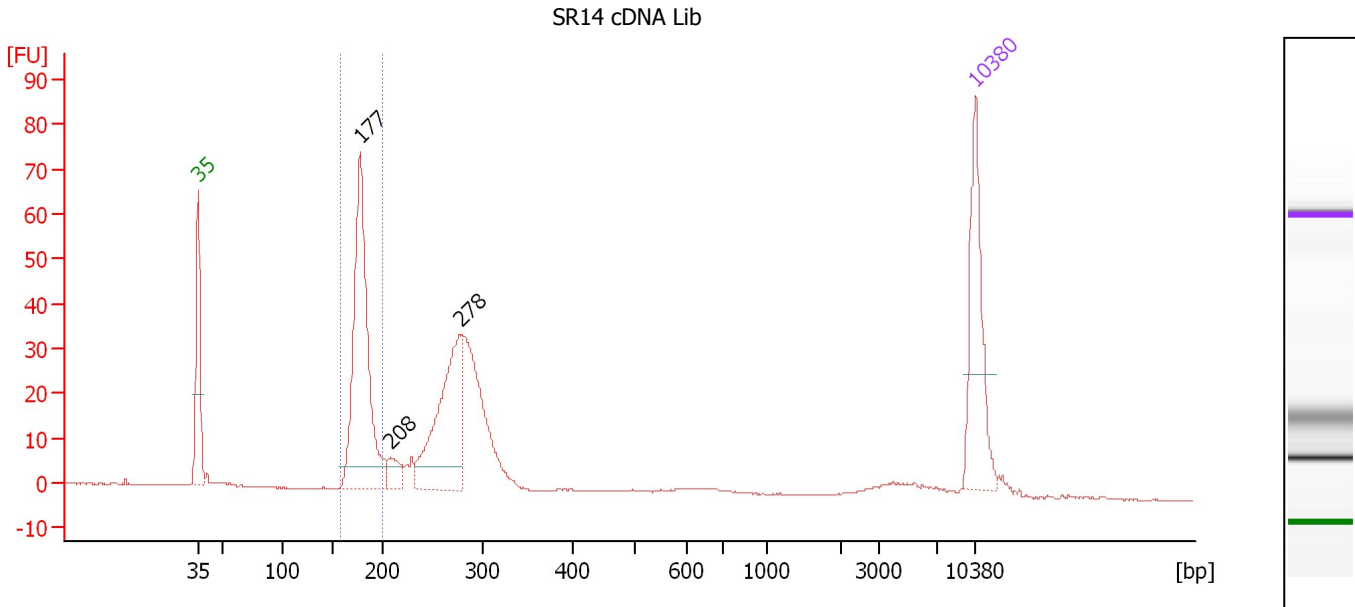
Region table for sample 6 : SR13 cDNA Lib

From [bp]	To [bp]	Average Size [bp]	Molarity [pmol/l]	Conc. [pg/μl]	Corr. Area	% of Total	Size distribution in CV [%]	Color
160	197	179	1,338.9	157.80	121.4	21	4.0	Blue

Assay Class: High Sensitivity DNA Assay
 Data Path: C:\...ents and Settings\Bioanalyzer\2013-10-08\2013-10-08_001.xad

Created: 10/8/2013 9:54:46 AM
 Modified: 10/8/2013 10:50:22 AM

Electropherogram Summary Continued ...



Overall Results for sample 7 : SR14 cDNA Lib

Number of peaks found: 3 Corr. Area 1: 180.3
 Noise: 0.1

Peak table for sample 7 : SR14 cDNA Lib

Peak	Size [bp]	Conc. [pg/μl]	Molarity [pmol/l]	Observations
1	35	125.00	5,411.3	Lower Marker
2	177	273.38	2,334.4	
3	208	20.35	148.4	
4	278	158.53	862.5	
5	10,380	75.00	10.9	Upper Marker

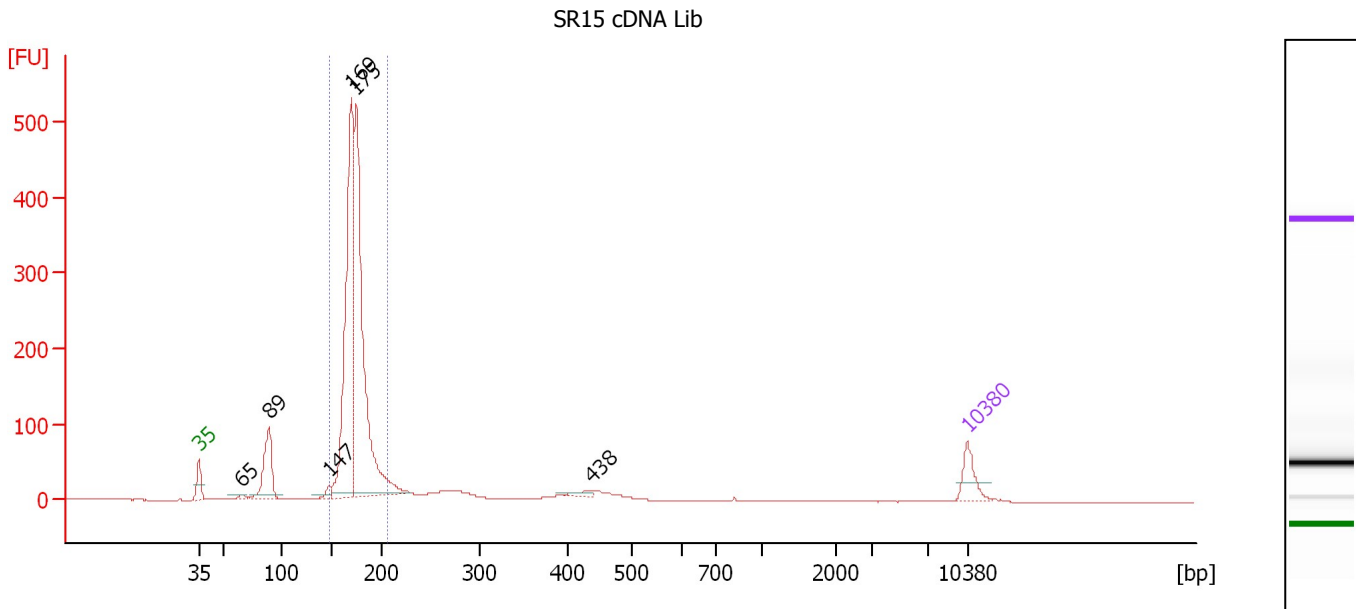
Region table for sample 7 : SR14 cDNA Lib

From [bp]	To [bp]	Average Size [bp]	Molarity [pmol/l]	Conc. [pg/μl]	Corr. Area	% of Total	Size distribution in CV [%]	Color
158	200	179	2,219.0	261.58	180.3	37	4.1	Blue

Assay Class: High Sensitivity DNA Assay
 Data Path: C:\...ents and Settings\Bioanalyzer\2013-10-08\2013-10-08_001.xad

Created: 10/8/2013 9:54:46 AM
 Modified: 10/8/2013 10:50:22 AM

Electropherogram Summary Continued ...



Overall Results for sample 8 : SR15 cDNA Lib

Number of peaks found: 6 Corr. Area 1: 1,637.7
 Noise: 0.2

Peak table for sample 8 : SR15 cDNA Lib

Peak	Size [bp]	Conc. [pg/μl]	Molarity [pmol/l]	Observations
1	35	125.00	5,411.3	Lower Marker
2	65	18.69	436.0	
3	89	304.10	5,197.2	
4	147	31.44	324.8	
5	169	1,311.21	11,744.4	
6	175	1,360.09	11,808.3	
7	438	26.71	92.4	
8	10,380	75.00	10.9	Upper Marker

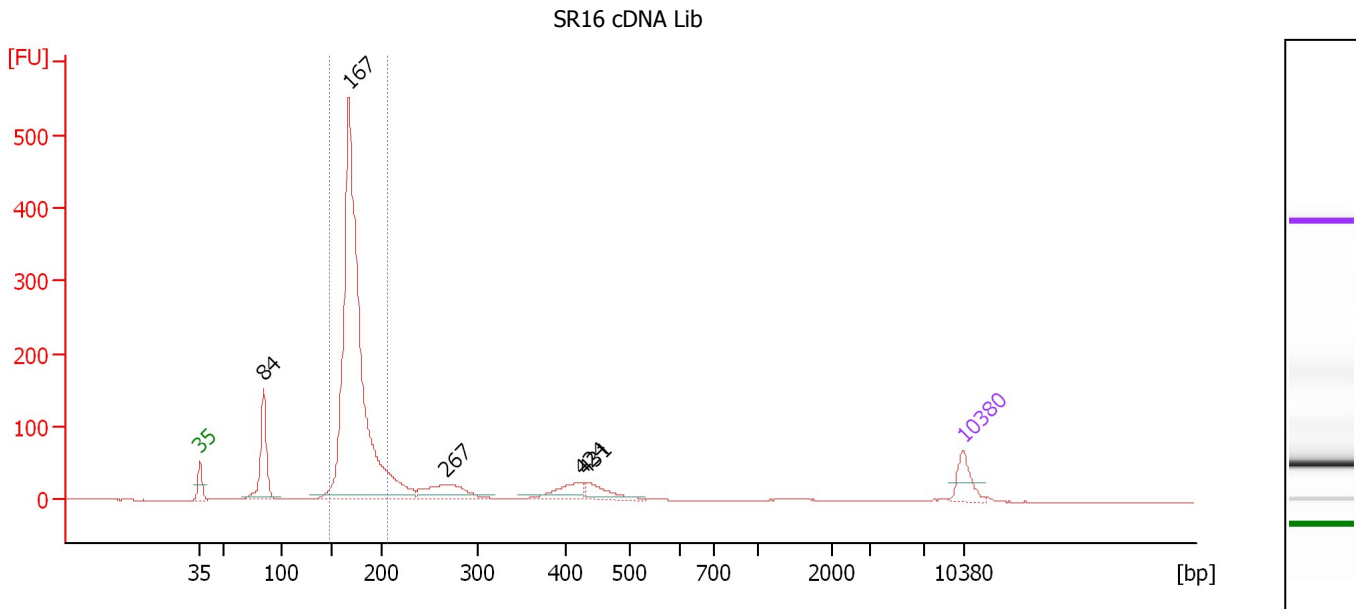
Region table for sample 8 : SR15 cDNA Lib

From [bp]	To [bp]	Average Size [bp]	Molarity [pmol/l]	Conc. [pg/μl]	Corr. Area	% of Total	Size distribution in CV [%]	Color
147	206	173	23,593.9	2,698.71	1,637.7	75	5.5	Blue

Assay Class: High Sensitivity DNA Assay
 Data Path: C:\...ents and Settings\Bioanalyzer\2013-10-08\2013-10-08_001.xad

Created: 10/8/2013 9:54:46 AM
 Modified: 10/8/2013 10:50:22 AM

Electropherogram Summary Continued ...



Overall Results for sample 9 : SR16 cDNA Lib

Number of peaks found: 5 Corr. Area 1: 1,577.5
 Noise: 0.2

Peak table for sample 9 : SR16 cDNA Lib

Peak	Size [bp]	Conc. [pg/μl]	Molarity [pmol/l]	Observations
1	35	125.00	5,411.3	Lower Marker
2	84	348.98	6,296.0	
3	167	2,679.21	24,246.2	
4	267	184.13	1,043.5	
5	424	101.39	362.4	
6	431	85.42	300.5	
7	10,380	75.00	10.9	Upper Marker

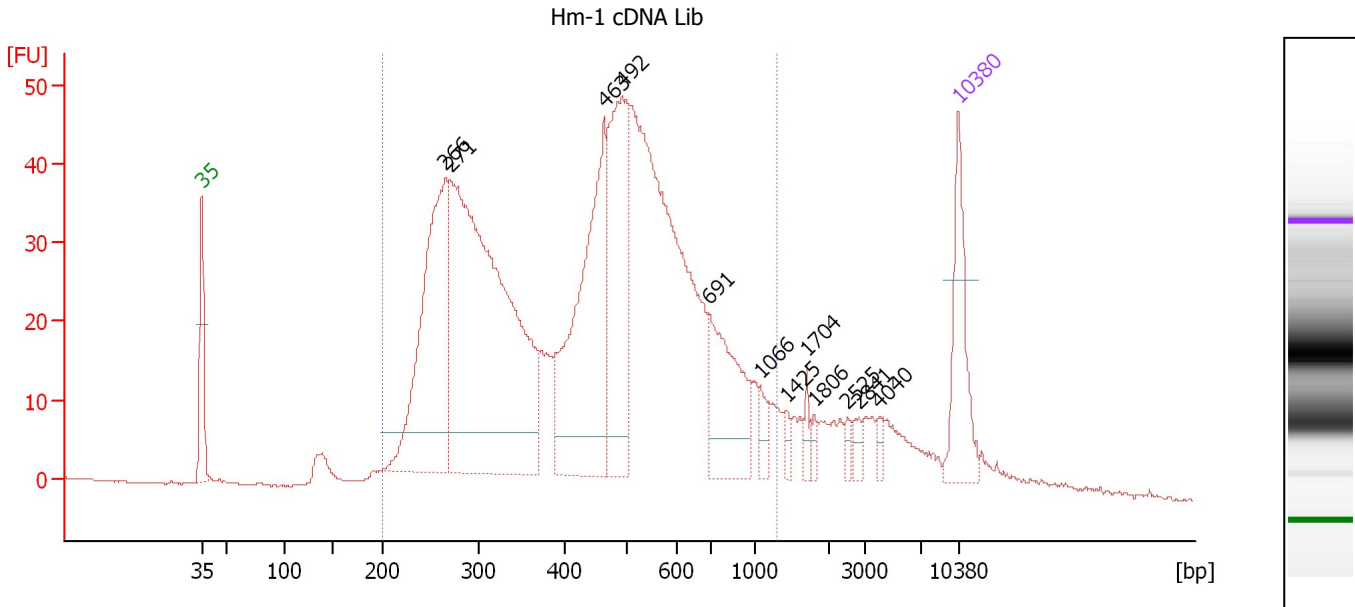
Region table for sample 9 : SR16 cDNA Lib

From [bp]	To [bp]	Average Size [bp]	Molarity [pmol/l]	Conc. [pg/μl]	Corr. Area	% of Total	Size distribution in CV [%]	Color
147	207	173	21,834.6	2,488.02	1,577.5	67	6.3	Blue

Assay Class: High Sensitivity DNA Assay
 Data Path: C:\...ents and Settings\Bioanalyzer\2013-10-08\2013-10-08_001.xad

Created: 10/8/2013 9:54:46 AM
 Modified: 10/8/2013 10:50:22 AM

Electropherogram Summary Continued ...



Overall Results for sample 10 : Hm-1 cDNA Lib

Number of peaks found: 12 Corr. Area 1: 1,232.9
 Noise: 0.1

Peak table for sample 10 : Hm-1 cDNA Lib

Peak	Size [bp]	Conc. [pg/μl]	Molarity [pmol/l]	Observations
1	35	125.00	5,411.3	Lower Marker
2	266	363.69	2,068.7	
3	271	776.35	4,343.6	
4	463	322.11	1,054.0	
5	492	230.81	711.5	
6	691	136.62	299.5	
7	1,066	18.33	26.0	
8	1,425	8.76	9.3	
9	1,704	10.22	9.1	
10	1,806	7.48	6.3	
11	2,525	7.72	4.6	
12	2,841	9.33	5.0	
13	4,040	7.87	3.0	
14	10,380	75.00	10.9	Upper Marker

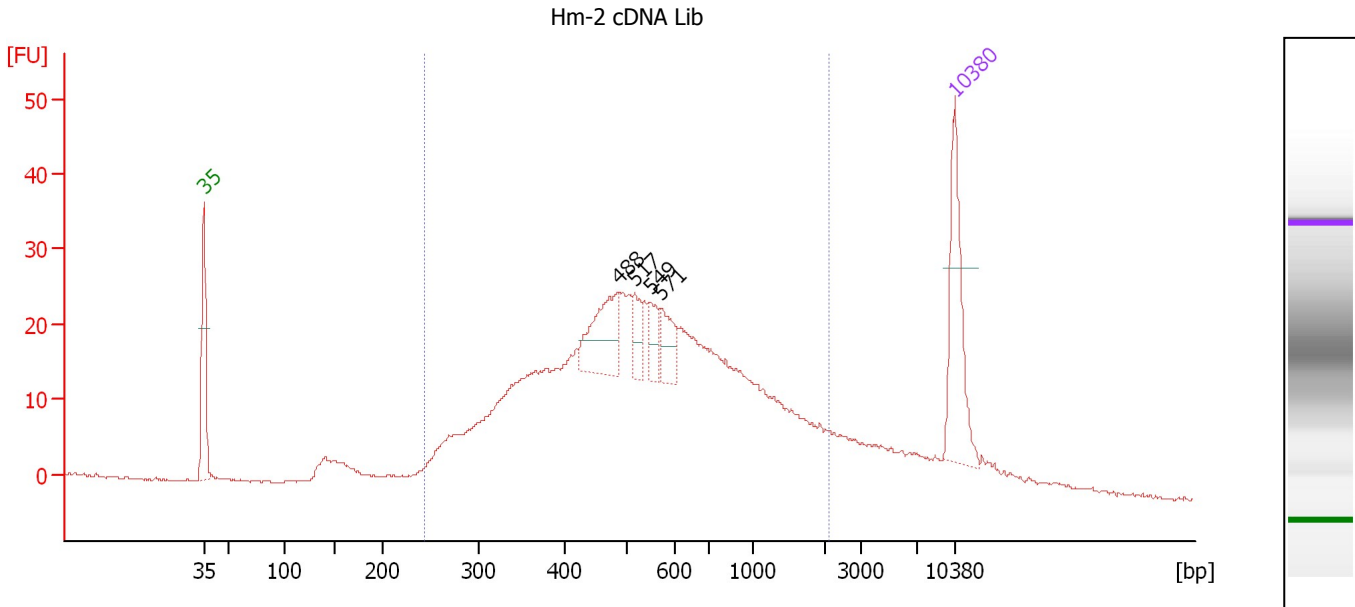
Region table for sample 10 : Hm-1 cDNA Lib

From [bp]	To [bp]	Average Size [bp]	Molarity [pmol/l]	Conc. [pg/μl]	Corr. Area	% of Total	Size distribution in CV [%]	Color
200	1,296	472	10,290.6	2,592.83	1,232.9	88	41.3	Blue

Assay Class: High Sensitivity DNA Assay
 Data Path: C:\...ents and Settings\Bioanalyzer\2013-10-08\2013-10-08_001.xad

Created: 10/8/2013 9:54:46 AM
 Modified: 10/8/2013 10:50:22 AM

Electropherogram Summary Continued ...



Overall Results for sample 11 : Hm-2 cDNA Lib

Number of peaks found: 4 Corr. Area 1: 679.8
 Noise: 0.2

Peak table for sample 11 : Hm-2 cDNA Lib

Peak	Size [bp]	Conc. [pg/μl]	Molarity [pmol/l]	Observations
1	35	125.00	5,411.3	Lower Marker
2	488	75.66	235.0	
3	517	23.49	68.8	
4	549	22.29	61.5	
5	571	32.16	85.4	
6	10,380	75.00	10.9	Upper Marker

Region table for sample 11 : Hm-2 cDNA Lib

From [bp]	To [bp]	Average Size [bp]	Molarity [pmol/l]	Conc. [pg/μl]	Corr. Area	% of Total	Size distribution in CV [%]	Color
244	2,111	647	4,305.1	1,373.51	679.8	87	58.0	Blue

Assay Class: High Sensitivity DNA Assay
Data Path: C:\...ents and Settings\Bioanalyzer\2013-10-08\2013-10-08_001.xad

Created: 10/8/2013 9:54:46 AM
Modified: 10/8/2013 10:50:22 AM

Gel Image

