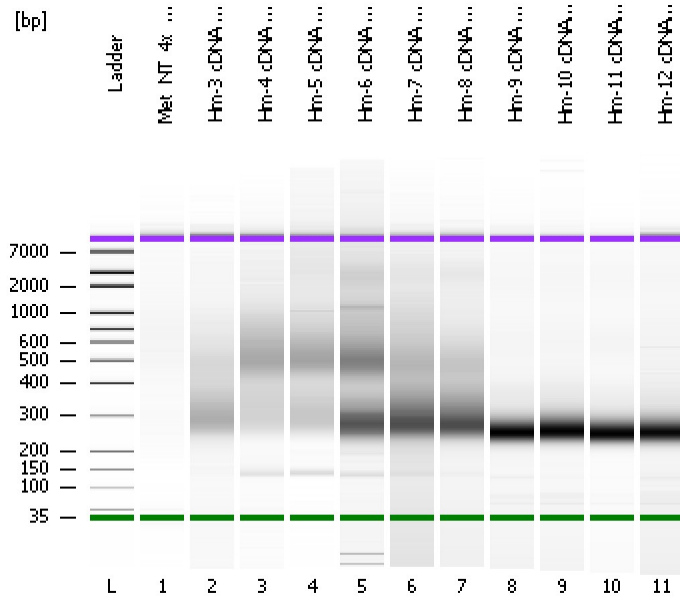


Assay Class: High Sensitivity DNA Assay
Data Path: C:\...ents and Settings\Bioanalyzer\2013-10-08\2013-10-08_003.xad

Created: 10/8/2013 1:17:07 PM
Modified: 10/8/2013 2:00:21 PM

Electrophoresis File Run Summary



Instrument Information:

Instrument Name: DE13701086 Firmware: C.01.069
Serial#: DE13701086 Type: G2938B

Assay Information:

Assay Origin Path: C:\Program Files\Agilent\2100 bioanalyzer\2100 expert\assays\dsDNA\High Sensitivity DNA.xsy
Assay Class: High Sensitivity DNA Assay
Version: 1.03
Assay Comments: Copyright © 2003-2010 Agilent Technologies

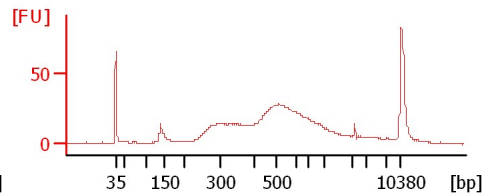
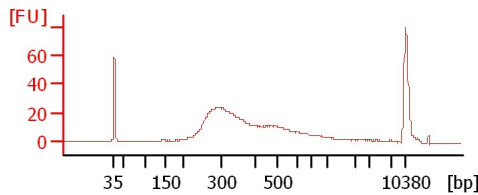
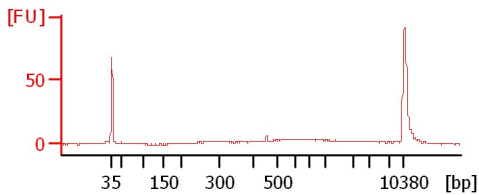
Chip Information:

Chip Lot #:
Reagent Kit Lot #:
Chip Comments:

Met_NT_4x_pool 1:5

Hm-3 cDNA Lib

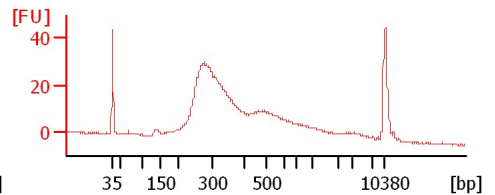
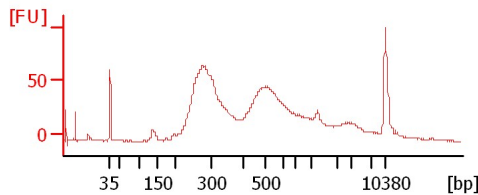
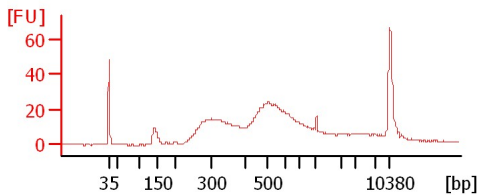
Hm-4 cDNA Lib



Hm-5 cDNA Lib

Hm-6 cDNA Lib

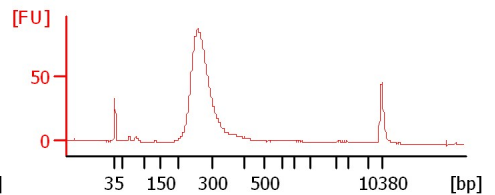
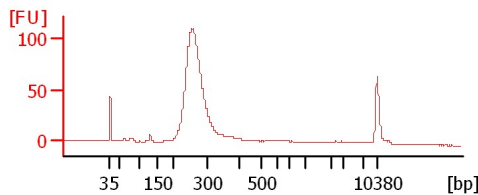
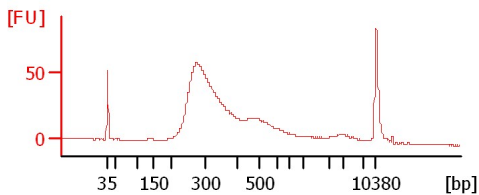
Hm-7 cDNA Lib



Hm-8 cDNA Lib

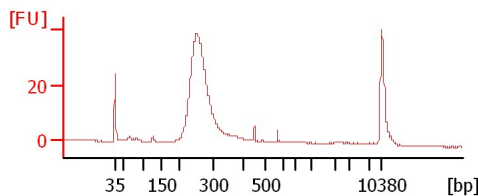
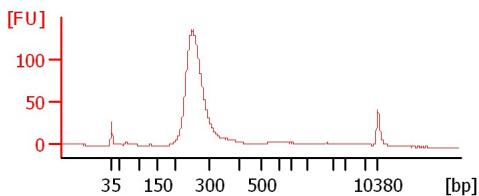
Hm-9 cDNA Lib

Hm-10 cDNA Lib



Hm-11 cDNA Lib

Hm-12 cDNA Lib



Assay Class: High Sensitivity DNA Assay
Data Path: C:\...ents and Settings\Bioanalyzer\2013-10-08\2013-10-08_003.xad

Created: 10/8/2013 1:17:07 PM
Modified: 10/8/2013 2:00:21 PM

Electrophoresis File Run Summary (Chip Summary)

Sample Name	Sample Comment	Rest. Digest	Status	Observation	Result Label	Result Color
Met_NT_4x_pool 1:5		<input type="checkbox"/>	✓			
Hm-3 cDNA Lib		<input type="checkbox"/>	✓			
Hm-4 cDNA Lib		<input type="checkbox"/>	✓			
Hm-5 cDNA Lib		<input type="checkbox"/>	✓			
Hm-6 cDNA Lib		<input type="checkbox"/>	✓			
Hm-7 cDNA Lib		<input type="checkbox"/>	✓			
Hm-8 cDNA Lib		<input type="checkbox"/>	✓			
Hm-9 cDNA Lib		<input type="checkbox"/>	✓			
Hm-10 cDNA Lib		<input type="checkbox"/>	✓			
Hm-11 cDNA Lib		<input type="checkbox"/>	✓			
Hm-12 cDNA Lib		<input type="checkbox"/>	✓			
Ladder		<input type="checkbox"/>	✓			

Chip Lot #

Reagent Kit Lot #

Chip Comments :

Assay Class: High Sensitivity DNA Assay
Data Path: C:\...ents and Settings\Bioanalyzer\2013-10-08\2013-10-08_003.xad

Created: 10/8/2013 1:17:07 PM
Modified: 10/8/2013 2:00:21 PM

Electrophoresis Assay Details

General Analysis Settings

Number of Available Sample and Ladder Wells (Max.) : 12
Minimum Visible Range [s] : 32
Maximum Visible Range [s] : 138
Start Analysis Time Range [s] : 33
End Analysis Time Range [s] : 137.5
Ladder Concentration [pg/μl] : 1950
Uses Standard Area for Ladder Fragments
Lower Marker Concentration [pg/μl] : 125
Upper Marker Concentration [pg/μl] : 75
Used Upper Marker for Quantitation
Standard Curve Fit is Point to Point
Show Data Aligned to Lower and Upper Marker

Integrator Settings

Integration Start Time [s] : 33.05
Integration End Time [s] : 137
Slope Threshold : 0.8
Height Threshold [FU] : 5
Area Threshold : 0.1
Width Threshold [s] : 0.6
Baseline Plateau [s] : 0.5

Filter Settings

Filter Width [s] : 0.5
Polynomial Order : 4

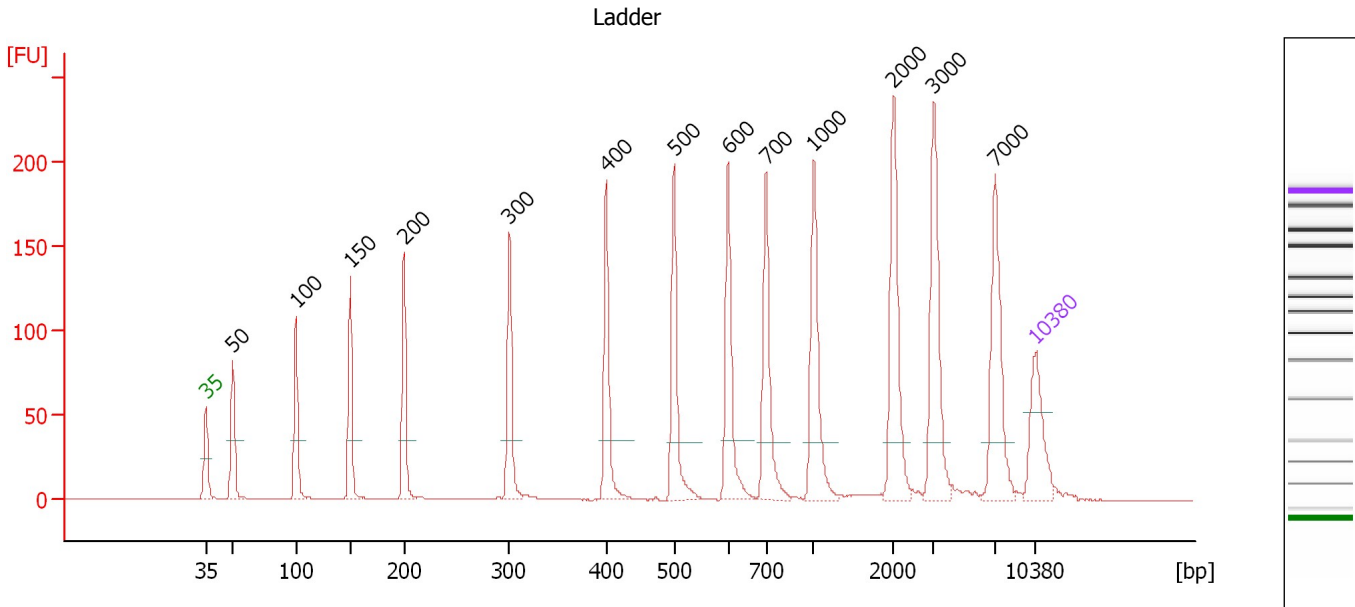
Ladder

Ladder Peak	Size	Area
1	35	160
2	50	210
3	100	208
4	150	221
5	200	242
6	300	270
7	400	305
8	500	306
9	600	336
10	700	321
11	1000	366
12	2000	413
13	3000	411
14	7000	400
15	10380	214

Assay Class: High Sensitivity DNA Assay
 Data Path: C:\...ents and Settings\Bioanalyzer\2013-10-08\2013-10-08_003.xad

Created: 10/8/2013 1:17:07 PM
 Modified: 10/8/2013 2:00:21 PM

Electropherogram Summary



Overall Results for Ladder

Noise: 0.1

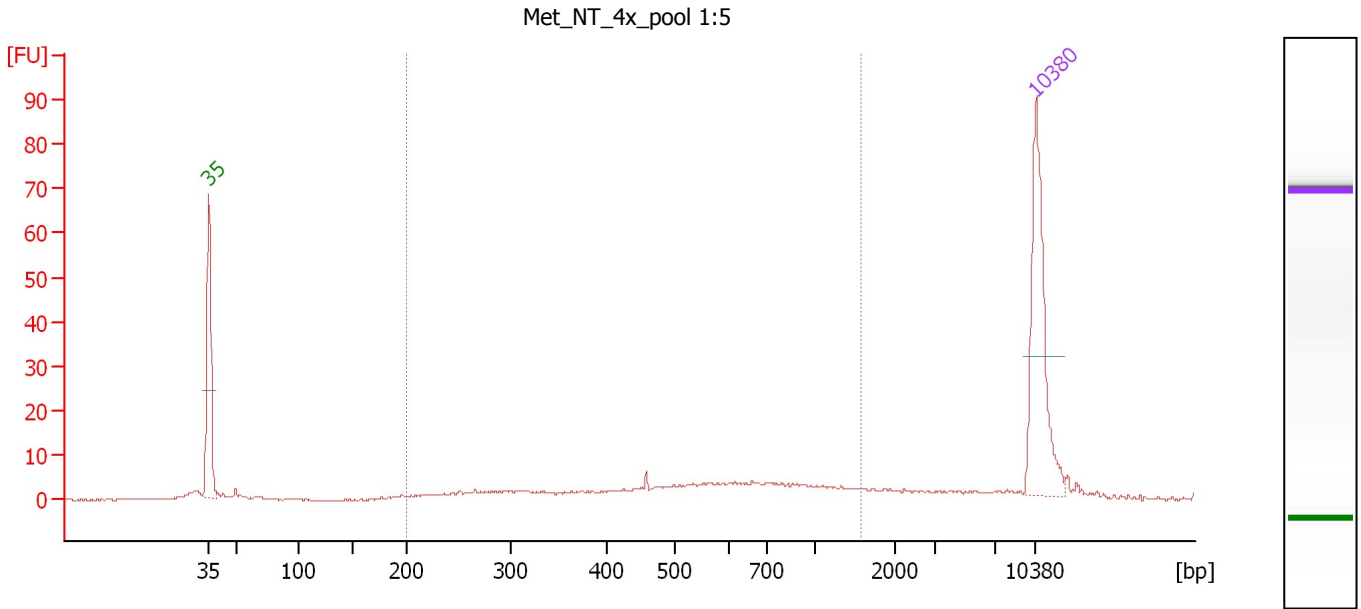
Peak table for Ladder

Peak	Size [bp]	Conc. [pg/μl]	Molarity [pmol/l]	Observations
1	35	125.00	5,411.3	Lower Marker
2	50	150.00	4,545.5	Ladder Peak
3	100	150.00	2,272.7	Ladder Peak
4	150	150.00	1,515.2	Ladder Peak
5	200	150.00	1,136.4	Ladder Peak
6	300	150.00	757.6	Ladder Peak
7	400	150.00	568.2	Ladder Peak
8	500	150.00	454.5	Ladder Peak
9	600	150.00	378.8	Ladder Peak
10	700	150.00	324.7	Ladder Peak
11	1,000	150.00	227.3	Ladder Peak
12	2,000	150.00	113.6	Ladder Peak
13	3,000	150.00	75.8	Ladder Peak
14	7,000	150.00	32.5	Ladder Peak
15	10,380	75.00	10.9	Upper Marker

Assay Class: High Sensitivity DNA Assay
 Data Path: C:\...ents and Settings\Bioanalyzer\2013-10-08\2013-10-08_003.xad

Created: 10/8/2013 1:17:07 PM
 Modified: 10/8/2013 2:00:21 PM

Electropherogram Summary Continued ...



Overall Results for sample 1 : Met NT 4x pool 1:5

Number of peaks found: 0 Corr. Area 1: 113.2
 Noise: 0.2

Peak table for sample 1 : Met NT 4x pool 1:5

Peak	Size [bp]	Conc. [pg/μl]	Molarity [pmol/l]	Observations
1	35	125.00	5,411.3	Lower Marker
2	10,380	75.00	10.9	Upper Marker

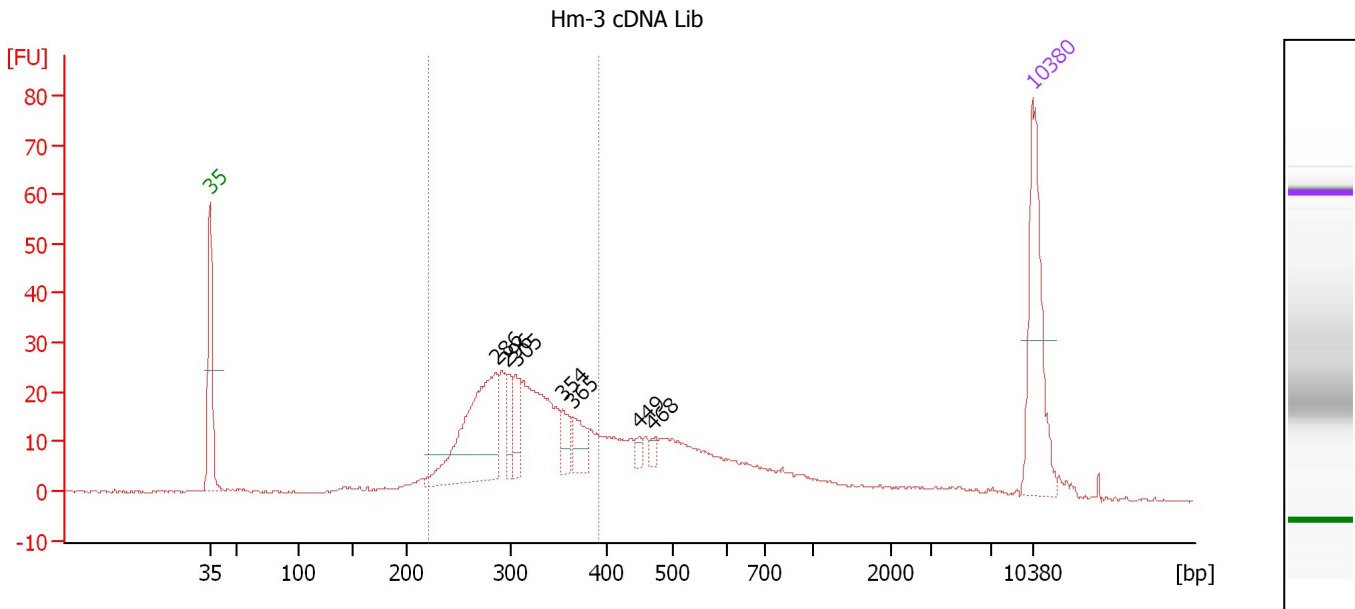
Region table for sample 1 : Met NT 4x pool 1:5

From [bp]	To [bp]	Average Size [bp]	Molarity [pmol/l]	Conc. [pg/μl]	Corr. Area	% of Total	Size distribution in CV [%]	Color
200	1,576	598	423.7	120.25	113.2	68	51.0	Blue

Assay Class: High Sensitivity DNA Assay
 Data Path: C:\...ents and Settings\Bioanalyzer\2013-10-08\2013-10-08_003.xad

Created: 10/8/2013 1:17:07 PM
 Modified: 10/8/2013 2:00:21 PM

Electropherogram Summary Continued ...



Overall Results for sample 2 : Hm-3 cDNA Lib

Number of peaks found: 7 Corr. Area 1: 366.8
 Noise: 0.2

Peak table for sample 2 : Hm-3 cDNA Lib

Peak	Size [bp]	Conc. [pg/μl]	Molarity [pmol/l]	Observations
1	35	125.00	5,411.3	Lower Marker
2	286	147.15	780.6	
3	296	25.10	128.6	
4	305	27.31	135.5	
5	354	19.40	82.9	
6	365	22.74	94.4	
7	449	5.40	18.2	
8	468	5.72	18.5	
9	10,380	75.00	10.9	Upper Marker

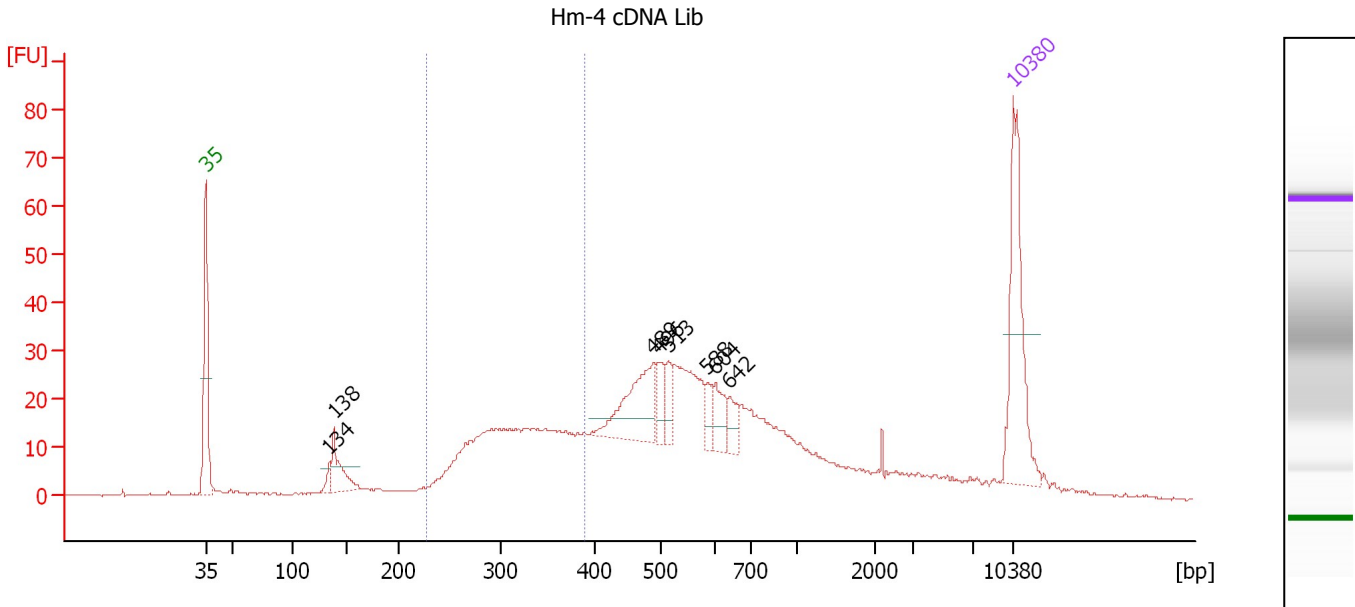
Region table for sample 2 : Hm-3 cDNA Lib

From [bp]	To [bp]	Average Size [bp]	Molarity [pmol/l]	Conc. [pg/μl]	Corr. Area	% of Total	Size distribution in CV [%]	Color
222	392	310	2,444.9	488.77	366.8	57	13.5	Blue

Assay Class: High Sensitivity DNA Assay
 Data Path: C:\...ents and Settings\Bioanalyzer\2013-10-08\2013-10-08_003.xad

Created: 10/8/2013 1:17:07 PM
 Modified: 10/8/2013 2:00:21 PM

Electropherogram Summary Continued ...



Overall Results for sample 3 : Hm-4 cDNA Lib

Number of peaks found: 8 Corr. Area 1: 229.8
 Noise: 0.2

Peak table for sample 3 : Hm-4 cDNA Lib

Peak	Size [bp]	Conc. [pg/μl]	Molarity [pmol/l]	Observations
1	35	125.00	5,411.3	Lower Marker
2	134	6.50	73.2	
3	138	35.30	386.2	
4	489	69.87	216.6	
5	496	17.63	53.8	
6	513	15.07	44.5	
7	588	10.84	28.0	
8	604	20.22	50.7	
9	642	13.59	32.1	
10	10,380	75.00	10.9	Upper Marker

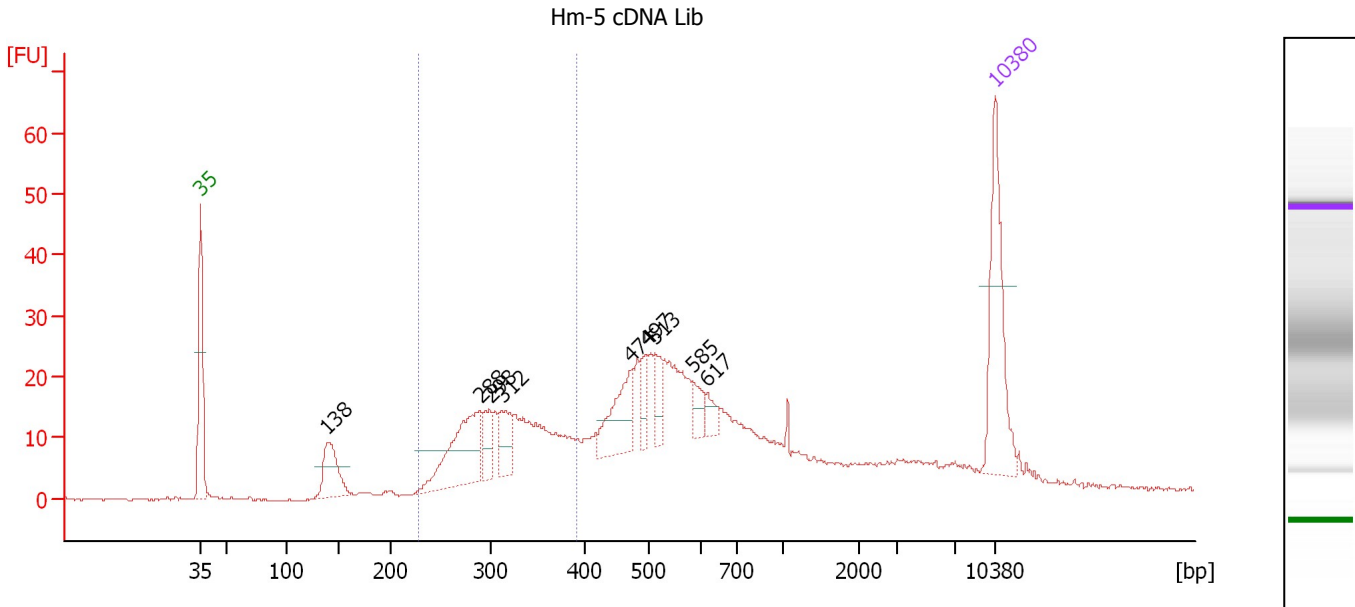
Region table for sample 3 : Hm-4 cDNA Lib

From [bp]	To [bp]	Average Size [bp]	Molarity [pmol/l]	Conc. [pg/μl]	Corr. Area	% of Total	Size distribution in CV [%]	Color
228	389	318	1,515.8	310.95	229.8	27	13.0	Blue

Assay Class: High Sensitivity DNA Assay
 Data Path: C:\...ents and Settings\Bioanalyzer\2013-10-08\2013-10-08_003.xad

Created: 10/8/2013 1:17:07 PM
 Modified: 10/8/2013 2:00:21 PM

Electropherogram Summary Continued ...



Overall Results for sample 4 : Hm-5 cDNA Lib

Number of peaks found: 9 Corr. Area 1: 207.4
 Noise: 0.2

Peak table for sample 4 : Hm-5 cDNA Lib

Peak	Size [bp]	Conc. [pg/μl]	Molarity [pmol/l]	Observations
1	35	125.00	5,411.3	Lower Marker
2	138	55.47	607.0	
3	288	96.33	506.0	
4	298	22.38	113.6	
5	312	33.97	165.2	
6	474	54.81	175.2	
7	497	19.51	59.5	
8	513	21.09	62.3	
9	585	15.47	40.1	
10	617	11.81	29.0	
11	10,380	75.00	10.9	Upper Marker

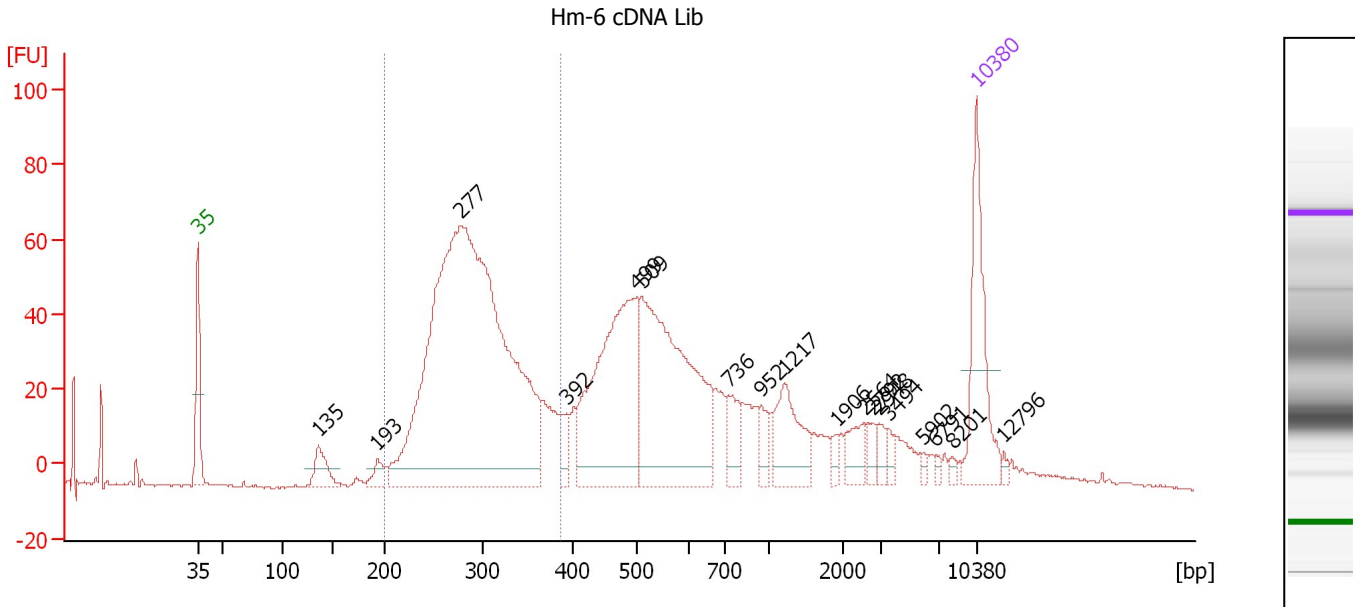
Region table for sample 4 : Hm-5 cDNA Lib

From [bp]	To [bp]	Average Size [bp]	Molarity [pmol/l]	Conc. [pg/μl]	Corr. Area	% of Total	Size distribution in CV [%]	Color
228	393	316	1,788.2	365.26	207.4	31	12.8	Blue

Assay Class: High Sensitivity DNA Assay
 Data Path: C:\...ents and Settings\Bioanalyzer\2013-10-08\2013-10-08_003.xad

Created: 10/8/2013 1:17:07 PM
 Modified: 10/8/2013 2:00:21 PM

Electropherogram Summary Continued ...



Overall Results for sample 5 : Hm-6 cDNA Lib

Number of peaks found: 18 Corr. Area 1: 552.7
 Noise: 0.4

Peak table for sample 5 : Hm-6 cDNA Lib

Peak	Size [bp]	Conc. [pg/μl]	Molarity [pmol/l]	Observations
1	35	125.00	5,411.3	Lower Marker
2	135	34.61	388.1	
3	193	15.44	120.9	
4	277	896.66	4,899.7	
5	392	20.41	78.8	
6	499	240.35	730.1	
7	509	280.02	833.6	
8	736	29.91	61.5	
9	952	17.33	27.6	
10	1,217	55.46	69.0	
11	1,906	5.76	4.6	
12	2,564	19.66	11.6	
13	2,792	8.95	4.9	
14	2,948	8.60	4.4	
15	3,494	7.24	3.1	
16	5,902	3.43	0.9	
17	6,791	3.41	0.8	
18	8,201	3.42	0.6	
19	10,380	75.00	10.9	Upper Marker
20	12,796	0.00	0.0	

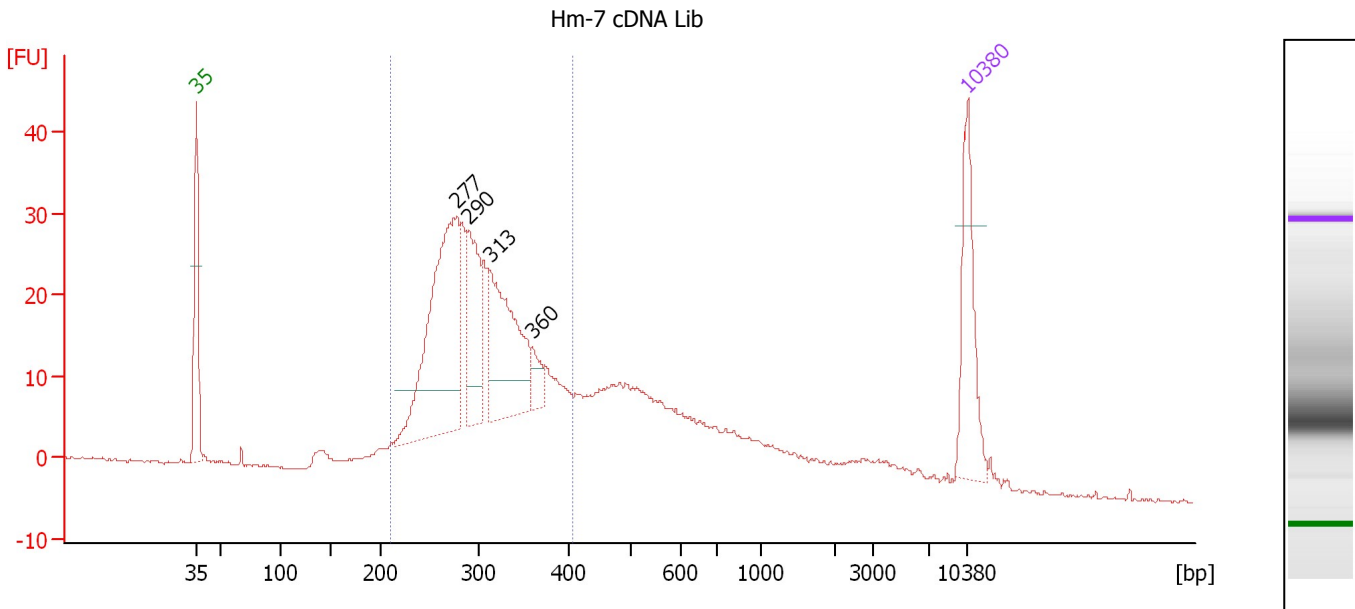
Region table for sample 5 : Hm-6 cDNA Lib

From [bp]	To [bp]	Average Size [bp]	Molarity [pmol/l]	Conc. [pg/μl]	Corr. Area	% of Total	Size distribution in CV [%]	Color
200	386	292	3,051.7	580.47	552.7	47	11.4	Blue

Assay Class: High Sensitivity DNA Assay
 Data Path: C:\...ents and Settings\Bioanalyzer\2013-10-08\2013-10-08_003.xad

Created: 10/8/2013 1:17:07 PM
 Modified: 10/8/2013 2:00:21 PM

Electropherogram Summary Continued ...



Overall Results for sample 6 : Hm-7 cDNA Lib

Number of peaks found: 4 Corr. Area 1: 447.7
 Noise: 0.2

Peak table for sample 6 : Hm-7 cDNA Lib

Peak	Size [bp]	Conc. [pg/μl]	Molarity [pmol/l]	Observations
1	35	125.00	5,411.3	Lower Marker
2	277	297.18	1,623.7	
3	290	101.96	533.0	
4	313	166.27	805.8	
5	360	20.98	88.3	
6	10,380	75.00	10.9	Upper Marker

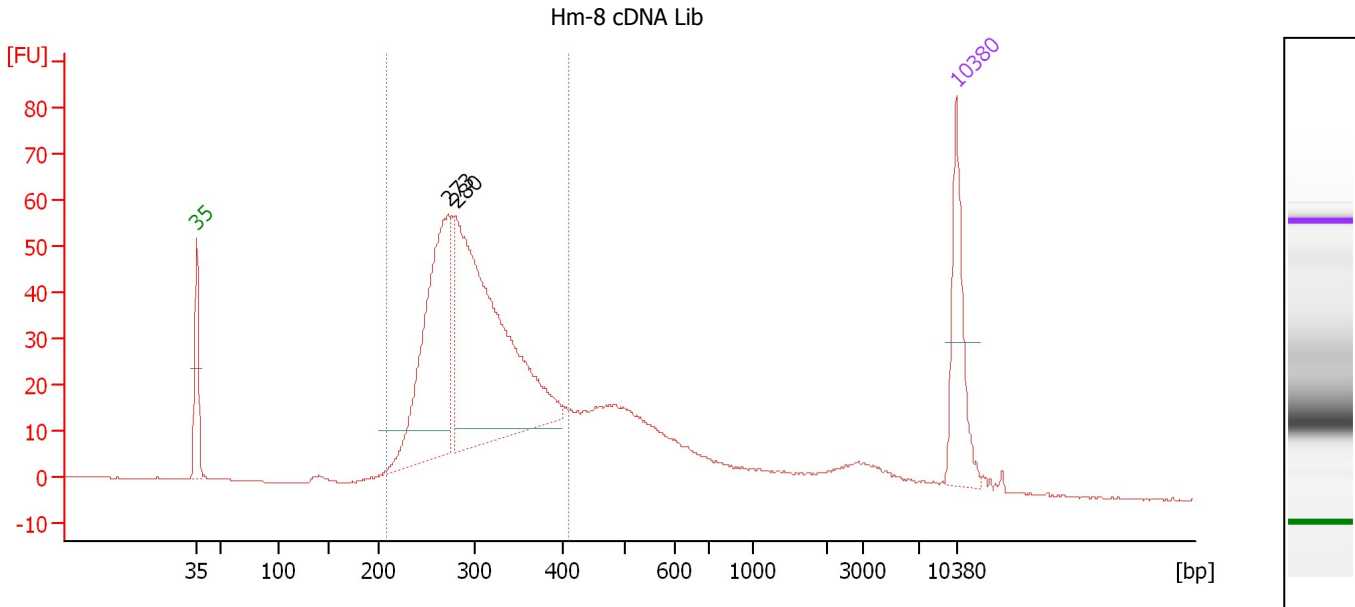
Region table for sample 6 : Hm-7 cDNA Lib

From [bp]	To [bp]	Average Size [bp]	Molarity [pmol/l]	Conc. [pg/μl]	Corr. Area	% of Total	Size distribution in CV [%]	Color
210	408	305	5,372.0	1,052.50	447.7	62	15.0	Blue

Assay Class: High Sensitivity DNA Assay
 Data Path: C:\...ents and Settings\Bioanalyzer\2013-10-08\2013-10-08_003.xad

Created: 10/8/2013 1:17:07 PM
 Modified: 10/8/2013 2:00:21 PM

Electropherogram Summary Continued ...



Overall Results for sample 7 : Hm-8 cDNA Lib

Number of peaks found: 2 Corr. Area 1: 785.4
 Noise: 0.1

Peak table for sample 7 : Hm-8 cDNA Lib

Peak	Size [bp]	Conc. [pg/μl]	Molarity [pmol/l]	Observations
1	35	125.00	5,411.3	Lower Marker
2	273	320.97	1,783.0	
3	280	498.62	2,693.6	
4	10,380	75.00	10.9	Upper Marker

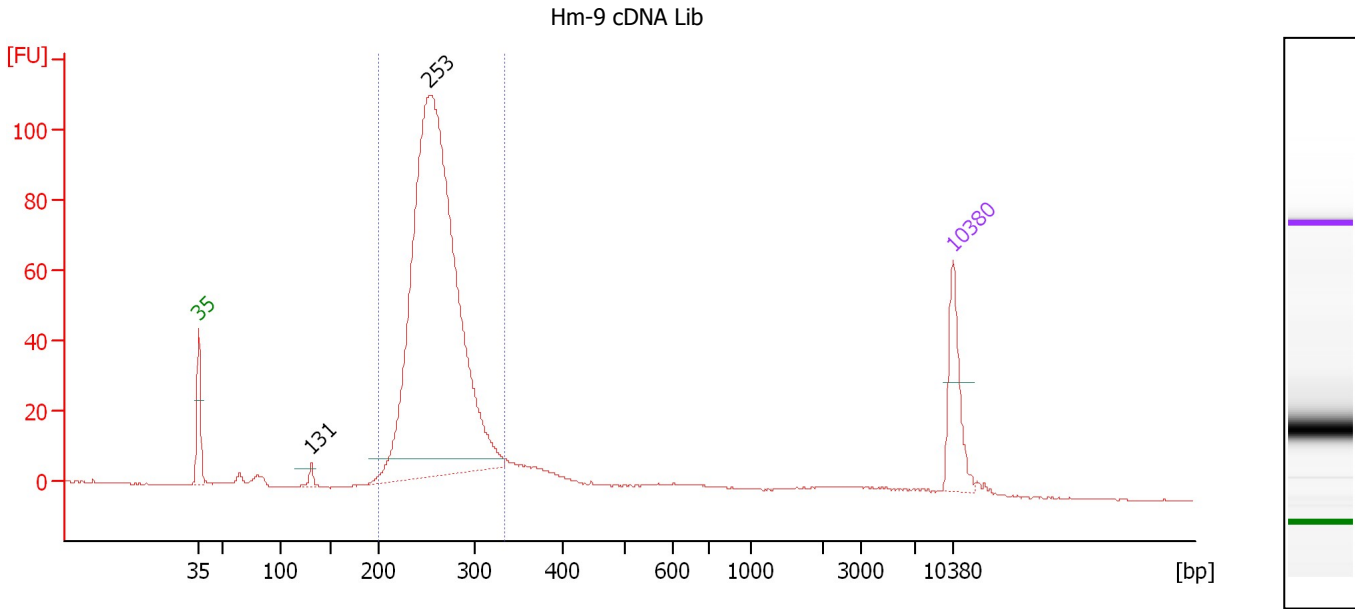
Region table for sample 7 : Hm-8 cDNA Lib

From [bp]	To [bp]	Average Size [bp]	Molarity [pmol/l]	Conc. [pg/μl]	Corr. Area	% of Total	Size distribution in CV [%]	Color
209	410	304	5,632.1	1,098.96	785.4	70	14.9	Blue

Assay Class: High Sensitivity DNA Assay
 Data Path: C:\...ents and Settings\Bioanalyzer\2013-10-08\2013-10-08_003.xad

Created: 10/8/2013 1:17:07 PM
 Modified: 10/8/2013 2:00:21 PM

Electropherogram Summary Continued ...



Overall Results for sample 8 : Hm-9 cDNA Lib

Number of peaks found: 2 Corr. Area 1: 849.2
 Noise: 0.1

Peak table for sample 8 : Hm-9 cDNA Lib

Peak	Size [bp]	Conc. [pg/μl]	Molarity [pmol/l]	Observations
1	35	125.00	5,411.3	Lower Marker
2	131	14.34	165.3	
3	253	1,492.95	8,956.3	
4	10,380	75.00	10.9	Upper Marker

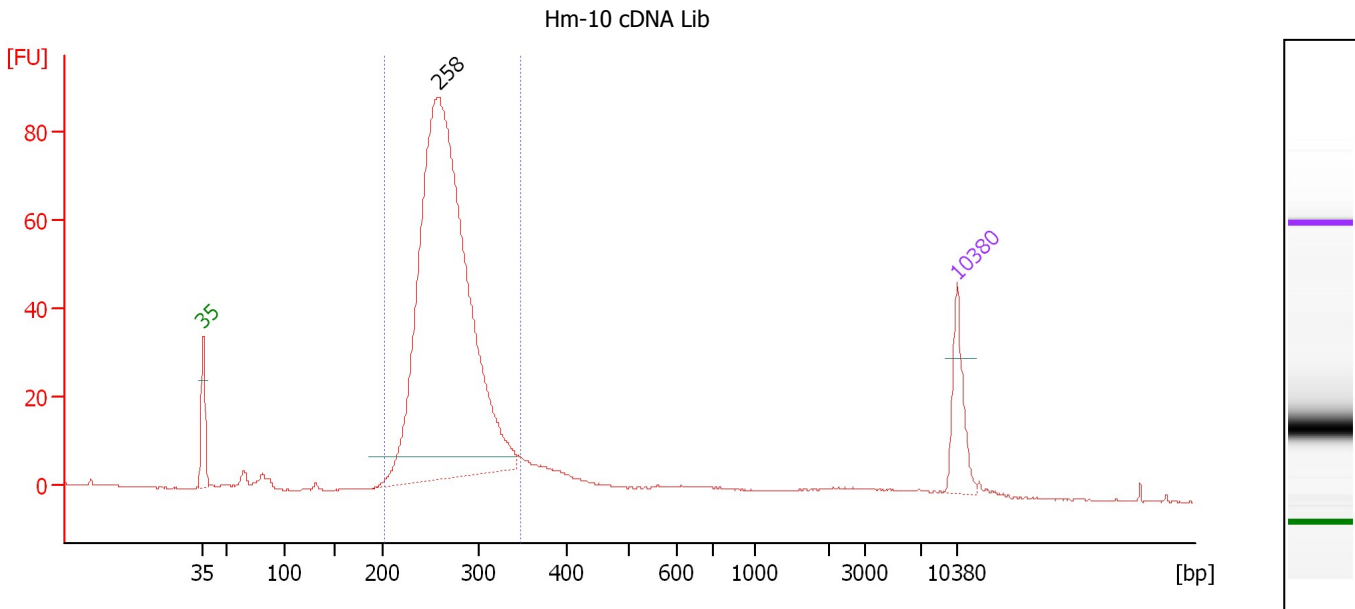
Region table for sample 8 : Hm-9 cDNA Lib

From [bp]	To [bp]	Average Size [bp]	Molarity [pmol/l]	Conc. [pg/μl]	Corr. Area	% of Total	Size distribution in CV [%]	Color
200	333	261	9,172.7	1,575.71	849.2	86	9.3	Blue

Assay Class: High Sensitivity DNA Assay
 Data Path: C:\...ents and Settings\Bioanalyzer\2013-10-08\2013-10-08_003.xad

Created: 10/8/2013 1:17:07 PM
 Modified: 10/8/2013 2:00:21 PM

Electropherogram Summary Continued ...



Overall Results for sample 9 : Hm-10 cDNA Lib

Number of peaks found: 1 Corr. Area 1: 734.7
 Noise: 0.1

Peak table for sample 9 : Hm-10 cDNA Lib

Peak	Size [bp]	Conc. [pg/μl]	Molarity [pmol/l]	Observations
1	35	125.00	5,411.3	Lower Marker
2	258	1,852.06	10,895.0	
3	10,380	75.00	10.9	Upper Marker

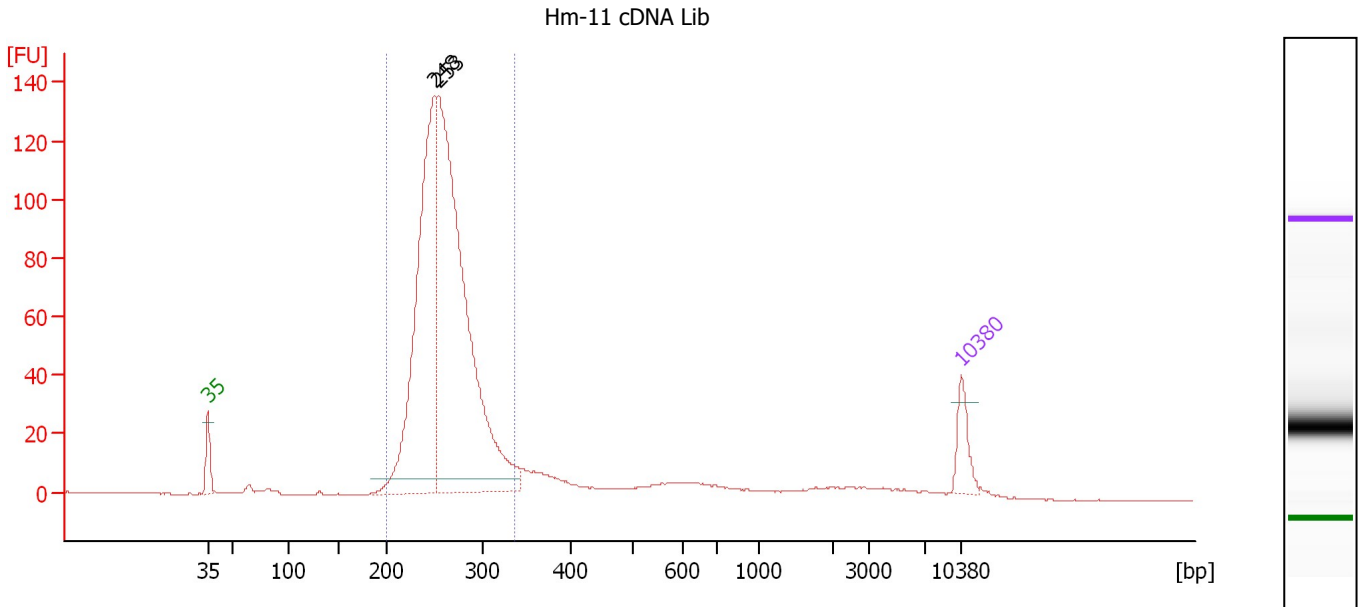
Region table for sample 9 : Hm-10 cDNA Lib

From [bp]	To [bp]	Average Size [bp]	Molarity [pmol/l]	Conc. [pg/μl]	Corr. Area	% of Total	Size distribution in CV [%]	Color
202	349	268	11,150.4	1,957.43	734.7	86	10.2	Blue

Assay Class: High Sensitivity DNA Assay
 Data Path: C:\...ents and Settings\Bioanalyzer\2013-10-08\2013-10-08_003.xad

Created: 10/8/2013 1:17:07 PM
 Modified: 10/8/2013 2:00:21 PM

Electropherogram Summary Continued ...



Overall Results for sample 10 : Hm-11 cDNA Lib

Number of peaks found: 2 Corr. Area 1: 1,037.4
 Noise: 0.1

Peak table for sample 10 : Hm-11 cDNA Lib

Peak	Size [bp]	Conc. [pg/μl]	Molarity [pmol/l]	Observations
1	35	125.00	5,411.3	Lower Marker
2	248	1,330.33	8,118.2	
3	253	1,955.38	11,722.5	
4	10,380	75.00	10.9	Upper Marker

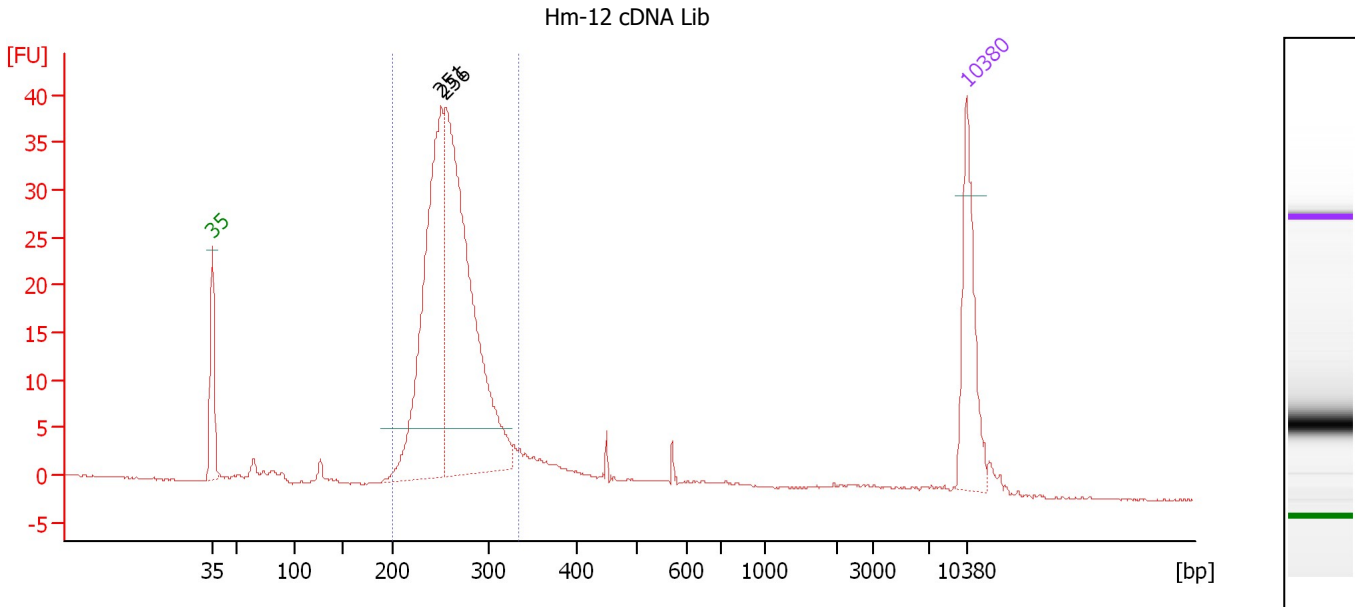
Region table for sample 10 : Hm-11 cDNA Lib

From [bp]	To [bp]	Average Size [bp]	Molarity [pmol/l]	Conc. [pg/μl]	Corr. Area	% of Total	Size distribution in CV [%]	Color
200	334	260	18,984.4	3,238.53	1,037.4	85	9.5	Blue

Assay Class: High Sensitivity DNA Assay
 Data Path: C:\...ents and Settings\Bioanalyzer\2013-10-08\2013-10-08_003.xad

Created: 10/8/2013 1:17:07 PM
 Modified: 10/8/2013 2:00:21 PM

Electropherogram Summary Continued ...



Overall Results for sample 11 : Hm-12 cDNA Lib

Number of peaks found: 2 Corr. Area 1: 303.8
 Noise: 0.1

Peak table for sample 11 : Hm-12 cDNA Lib

Peak	Size [bp]	Conc. [pg/μl]	Molarity [pmol/l]	Observations
1	35	125.00	5,411.3	Lower Marker
2	251	345.16	2,081.2	
3	256	460.19	2,726.6	
4	10,380	75.00	10.9	Upper Marker

Region table for sample 11 : Hm-12 cDNA Lib

From [bp]	To [bp]	Average Size [bp]	Molarity [pmol/l]	Conc. [pg/μl]	Corr. Area	% of Total	Size distribution in CV [%]	Color
200	336	262	4,886.6	841.54	303.8	84	9.7	Blue

Assay Class: High Sensitivity DNA Assay
Data Path: C:\...ents and Settings\Bioanalyzer\2013-10-08\2013-10-08_003.xad

Created: 10/8/2013 1:17:07 PM
Modified: 10/8/2013 2:00:21 PM

Gel Image

